

IDAHO SPRINGS

Highways

Major Roads

Paved

Gravel

Bladed

Local Roads

Paved

Gravel

Bladed

Base Data

City Limits

Counties

Cemetery

Lakes

Rivers/Streams

Railroads

Public Land Classification

Public Lands

State Lands

National or State Forest

National Parks/Monuments

Indian Reservations

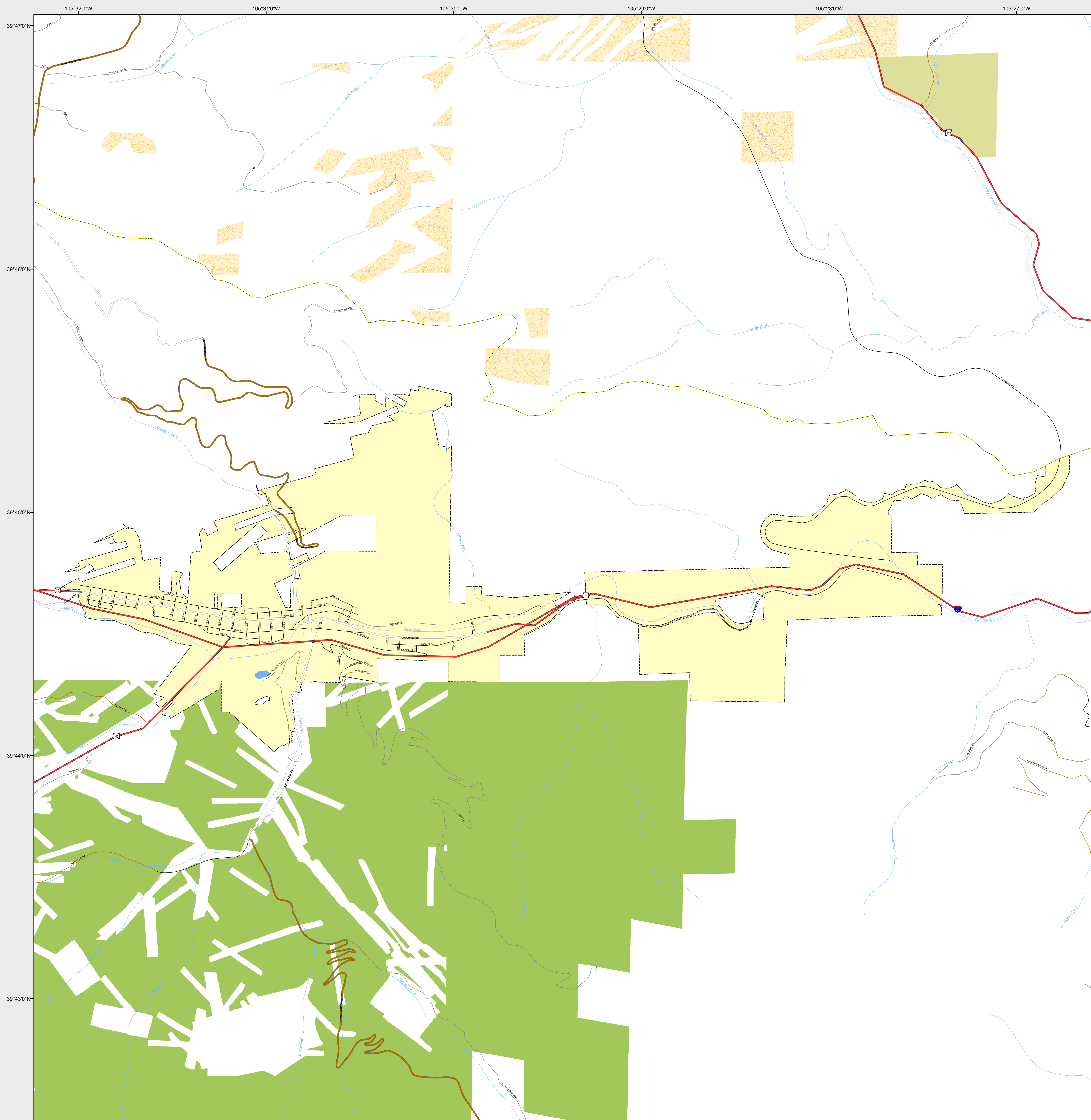
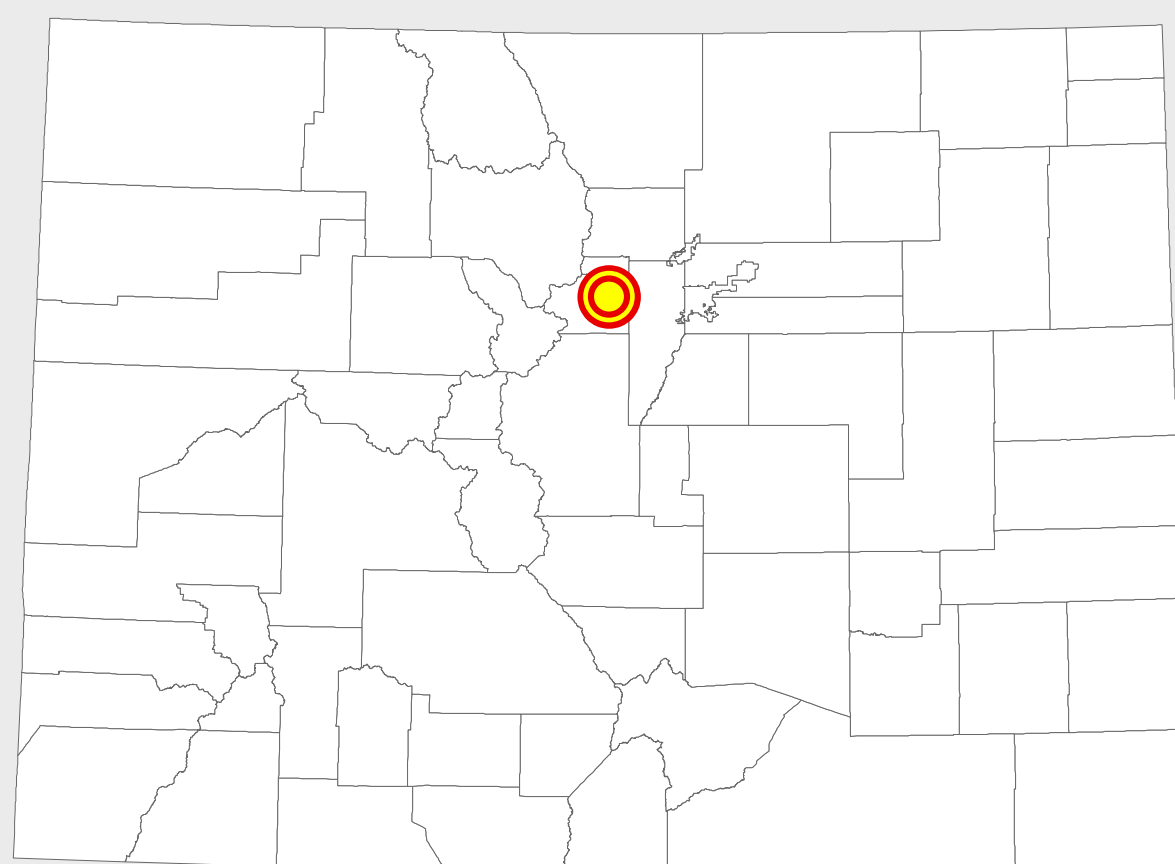
Military/Federal

Wilderness Areas

0 0.25 0.5 Miles

State of Colorado

This city is located in the following count(ies):
Clear Creek



CDOT does not guarantee the accuracy of any information presented, is not liable in any respect for any errors, or omissions and is not responsible for determining fitness for use in this map. Source of landowner data is COMaP v9. This map does not imply permission of public access.