

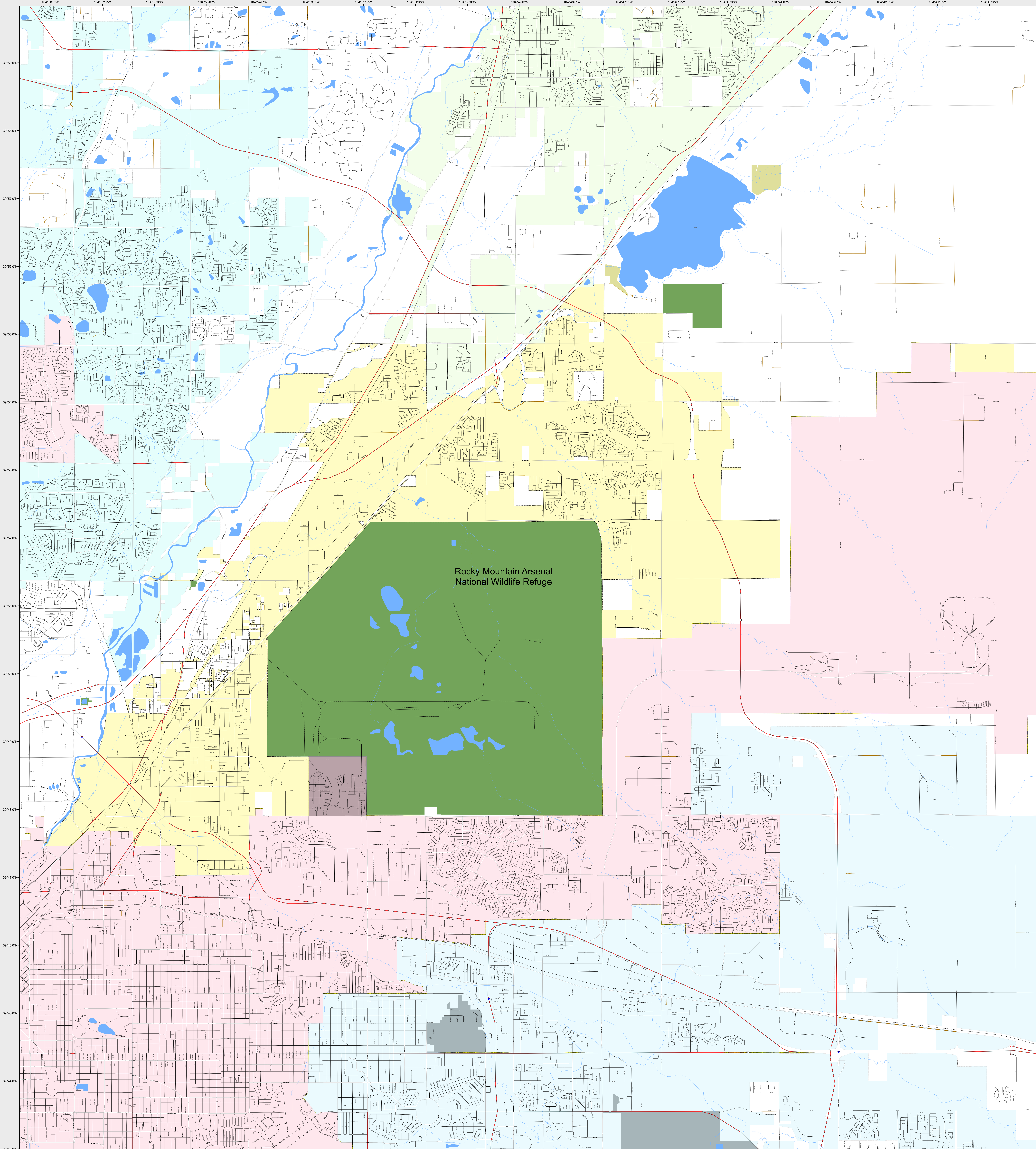
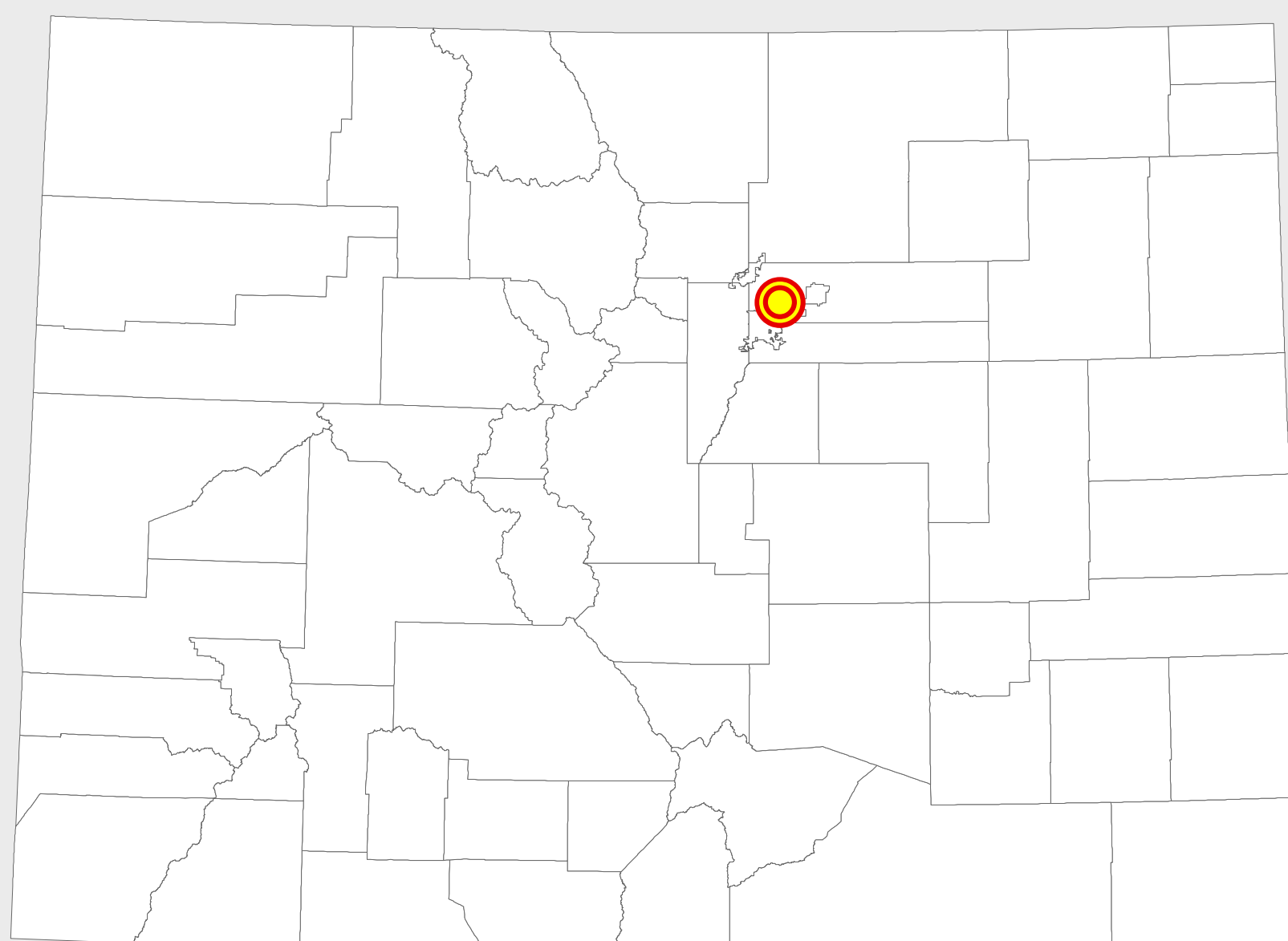
# COMMERCE CITY

-  Highways
- Major Roads**
-  Paved
-  Gravel
-  Bladed
- Local Roads**
-  Paved
-  Gravel
-  Bladed
- Base Data**
-  City Limits
-  Counties
-  Cemetery
-  Lakes
-  Rivers/Streams
-  Railroads
- Public Land Classification**
-  Public Lands
-  State Lands
-  National or State Forest
-  National Parks/Monuments
-  Indian Reservations
-  Military/Federal
-  Wilderness Areas

0 0.55 1.1 Miles

## State of Colorado

This city is located in the following count(ies):  
Adams



Rocky Mountain Arsenal  
National Wildlife Refuge



CDOT does not guarantee the accuracy of any information presented, is not liable in any respect for any errors, or omissions and is not responsible for determining fitness for use in this map. Source of landowner data is COMaP v3. This map does not imply permission of public access.