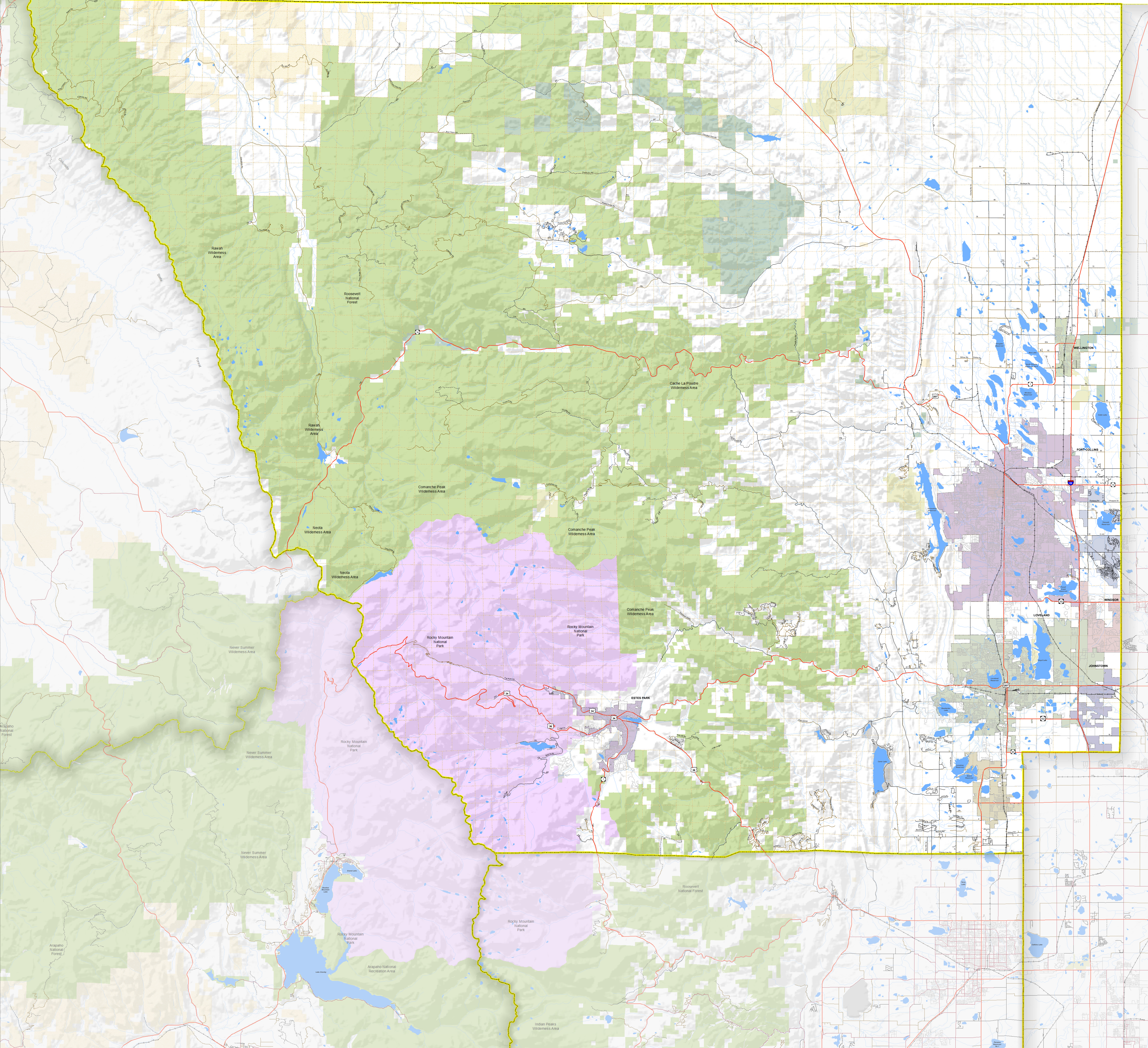
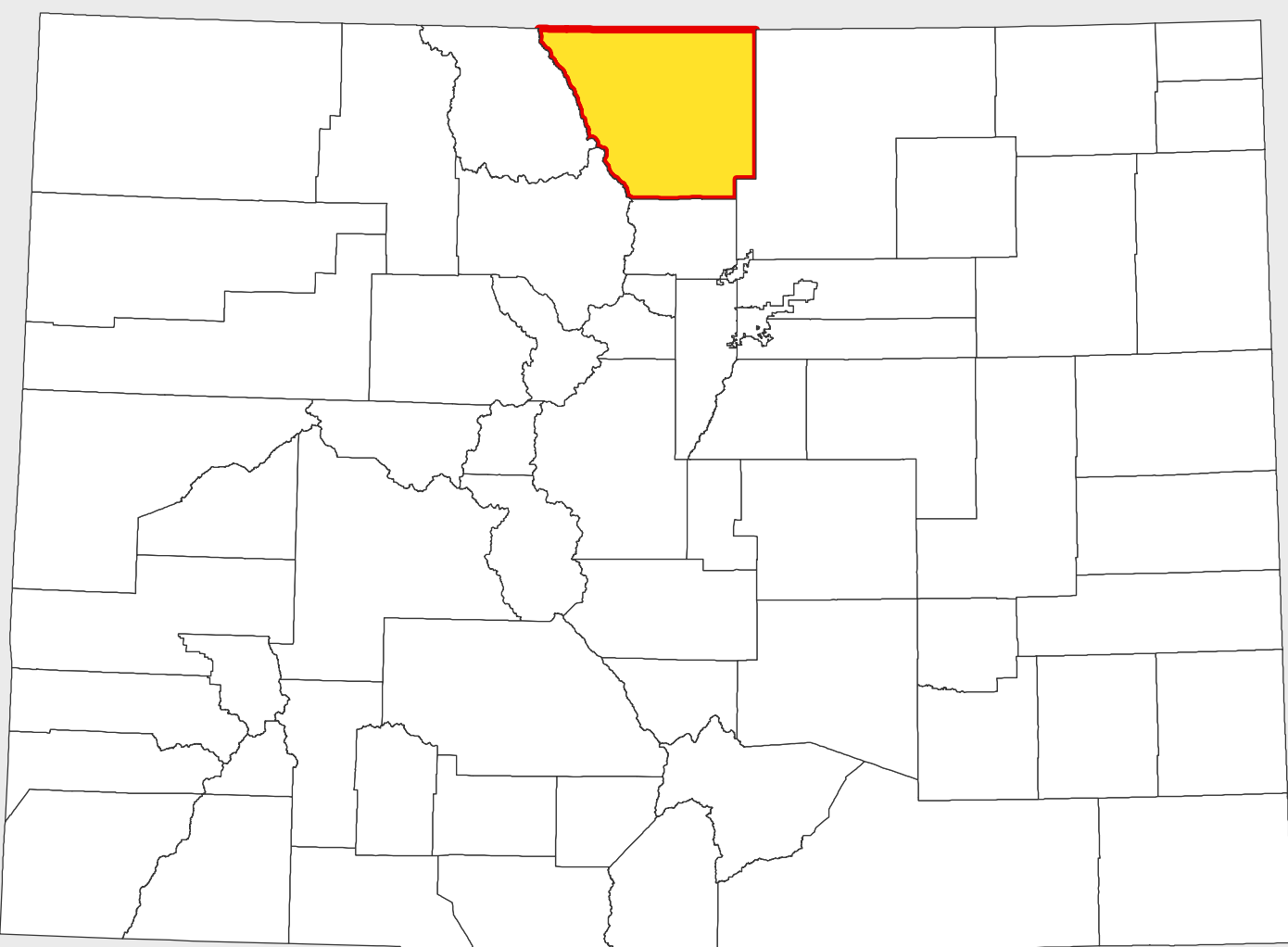


# LARIMER COUNTY

- Highways
- Local Roads
  - Paved
  - Gravel
  - Bladed
  - Urban Area Streets
- Base Data
  - City Limits
  - County
  - Township Lines (PLSS)
  - Lakes
  - Rivers/Streams
  - Railroads
- Land Classification
  - Public Lands
  - State Lands
  - National or State Forest
  - National Parks/Monuments
  - Indian Reservations
  - Military/Federal
  - Wilderness Areas

0 3 6 Miles

## State of Colorado



CDOT does not guarantee the accuracy of any information presented, is not liable in any respect for any errors, or omissions and is not responsible for determining fitness for use in this map. Source of landowner data is COMaP v9. This map does not imply permission of public access.