

OTIS is the access point to information frequently used for transportation planning and project development. Information is provided on current and projected traffic volumes, state highway attributes summary roadway statistics, demographics and geographic data.

What is Windshield?

Windshield is a highly interactive highway viewing application designed for both desktop and mobile browsers within OTIS (Online Transportation Information System). This application simulates a driving experience throughout Colorado. Multiple camera angles are available to provide a wide angle panorama of the Highway. The user can view seven years of imagery

What are the Enhancements?

- Improved Performance
- Access to Historical Images
- Use on your Mobile Device
- Improved Search Functions

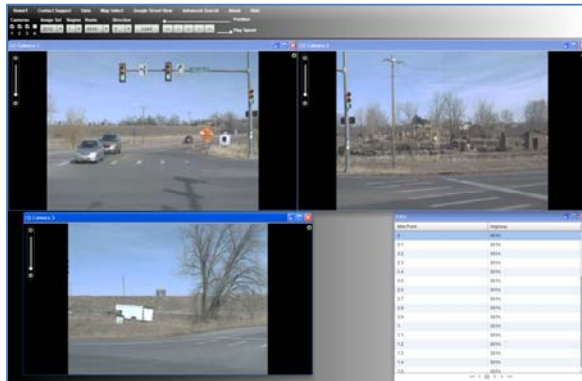
Below are just some of the Enhancements to Windshield

Check these and much more out by going to OTIS <http://dtdapps.coloradodot.info/Otis/>

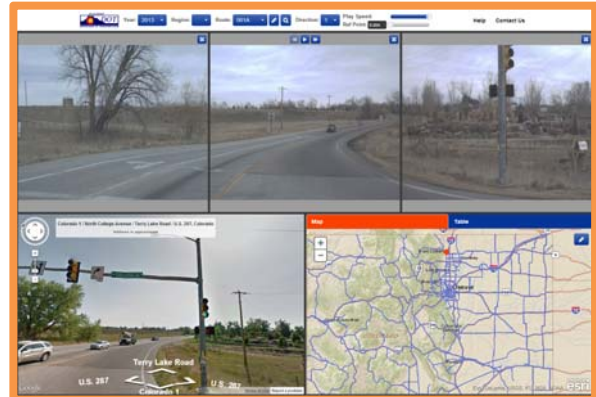
Look for new Tips and Tricks in Public Announcements

Homepage

Former Windshield

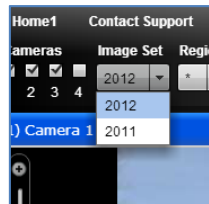


Enhanced Windshield



Historical Images

Former Windshield



Enhanced Windshield



New Search by Reference Point

Former Windshield



Enhanced Windshield

