

This map is expressed in UTM Zone 13 NAD27, meters.
 Map Scale is 1:3600 (1 inch equals 300 feet).

Data Sources:
 Aerial Imagery provided by ISSI Consulting Group
 Sediment Control Action Plan data provided by Clear Creek Consultants.



J. F. SATO AND ASSOCIATES
 5898 South Rapp Street
 Littleton, Colorado 80120
 Phone: (303) 797-1200

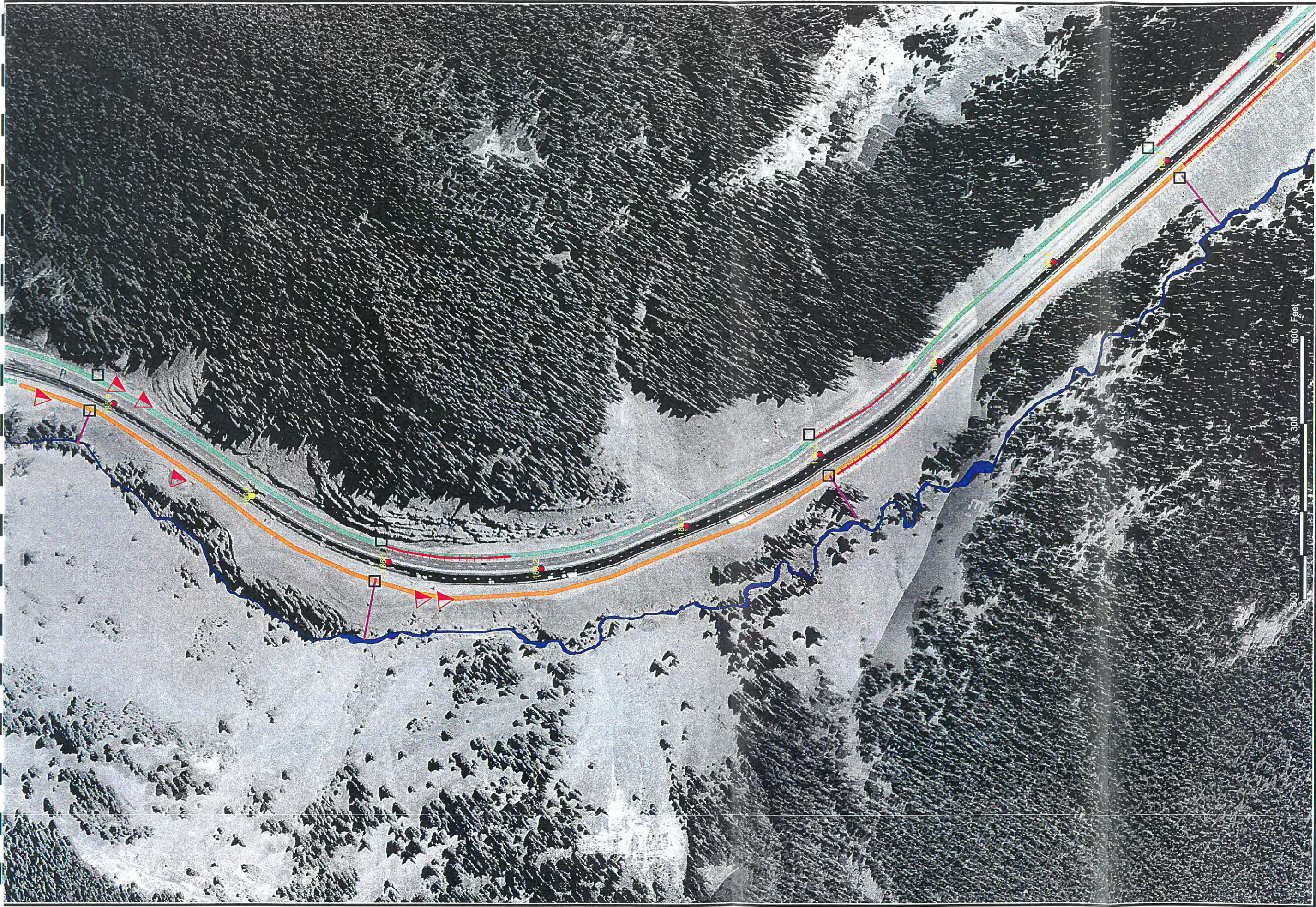
Black Gore Creek Sediment Control Action Plan

Figure: 4 of 13

Legend

- Clean Water Flow Bypass
- Valley Pan Drain / Type 7 Barrier
- Paved Shoulder / Knee Wall
- B-grade traps
- Run-down
- Sediment Basin
- Mileposts
- Inlet
- Inlet





This map is expressed in UTM Zone 13 NAD27, meters.
 Map Scale is 1:3600 (1 inch equals 300 feet).

Data Sources:
 Aerial Imagery provided by ISSI Consulting Group
 Sediment Control Action Plan data provided by Clear
 Creek Consultants.



J. F. SATO AND ASSOCIATES
 5899 South Kopp Street
 Littleton, Colorado 80120
 Phone: (303) 797-1200



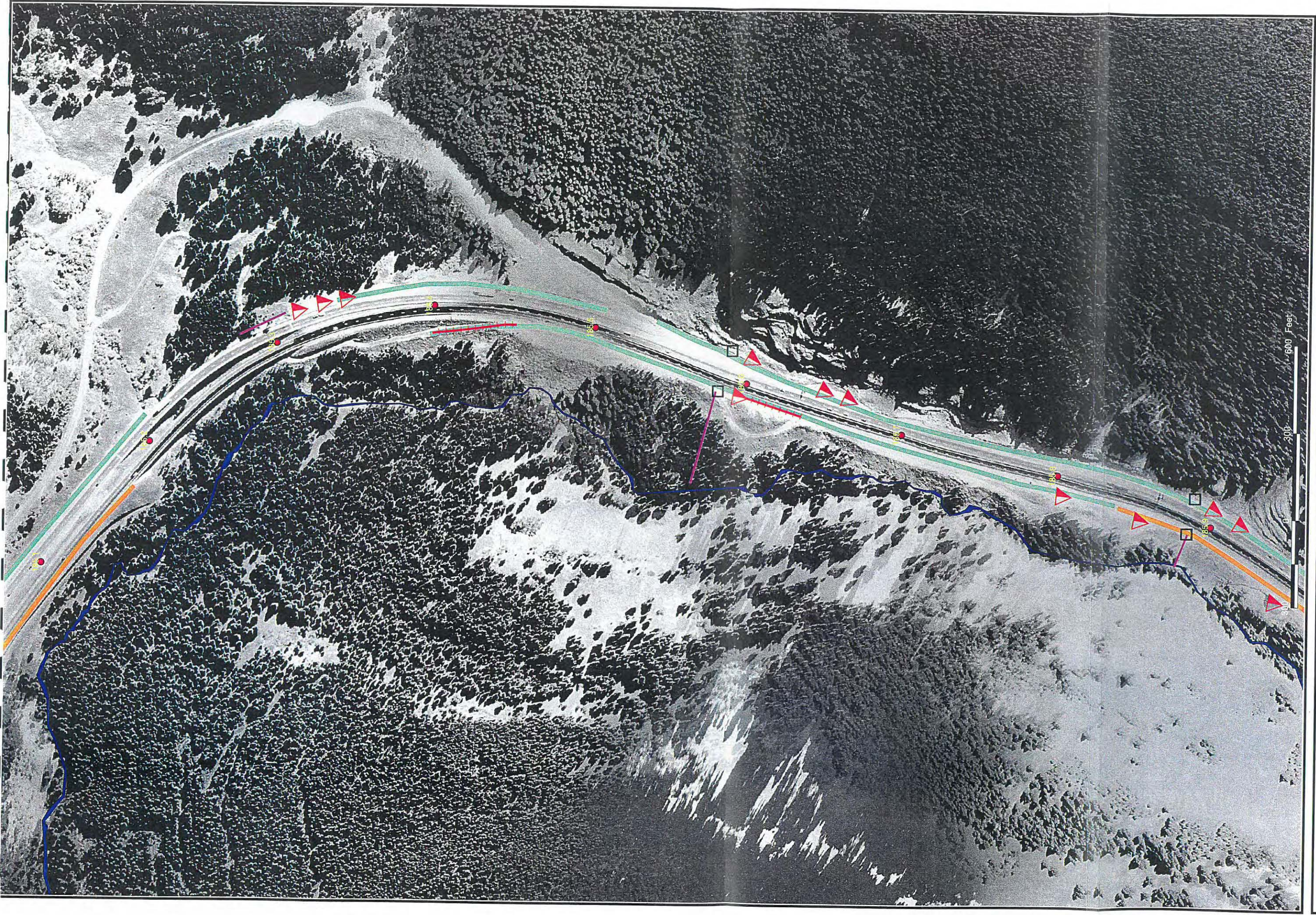
Black Gore Creek Sediment Control Action Plan

Figure: 5 of 13

Legend

- Clean Water Flow Bypass
- Valley Pan Drain / Type 7 Barrier
- Paved Shoulder / Knee Wall
- B-grade traps
- Sediment Basin
- Mileposts
- Inlet
- Inlet
- Rundown





This map is expressed in UTM Zone 13 NAD27, meters.
 Map Scale is 1:3600 (1 inch equals 300 feet).

Data Sources:
 Aerial Imagery provided by ISSI Consulting Group
 Sediment Control Action Plan data provided by Clear
 Creek Consultants.



J. F. SATO AND ASSOCIATES
 5898 South Rapp Street
 Littleton, Colorado 80120
 Phone: (303) 797-1200

- Legend**
- Clean Water Flow Bypass
 - Valley Pan Drain / Type 7 Barrier
 - Paved Shoulder / Knee Wall
 - B-grade traps
 - Run-down
 - Sediment Basin
 - Mileposts
 - Inlet
 - Inlet

Figure: 6 of 13

Black Gore Creek Sediment Control Action Plan

