



This map is expressed in UTM Zone 13 NAD27, meters.
 Map Scale is 1:3600 (1 inch equals 300 feet).

Data Sources:
 Aerial Imagery provided by ISSI Consulting Group
 Sediment Control Action Plan data provided by Clear
 Creek Consultants.



J. F. SATO AND ASSOCIATES
 5898 South Rapp Street
 Littleton, Colorado 80120
 Phone: (303) 797-1200

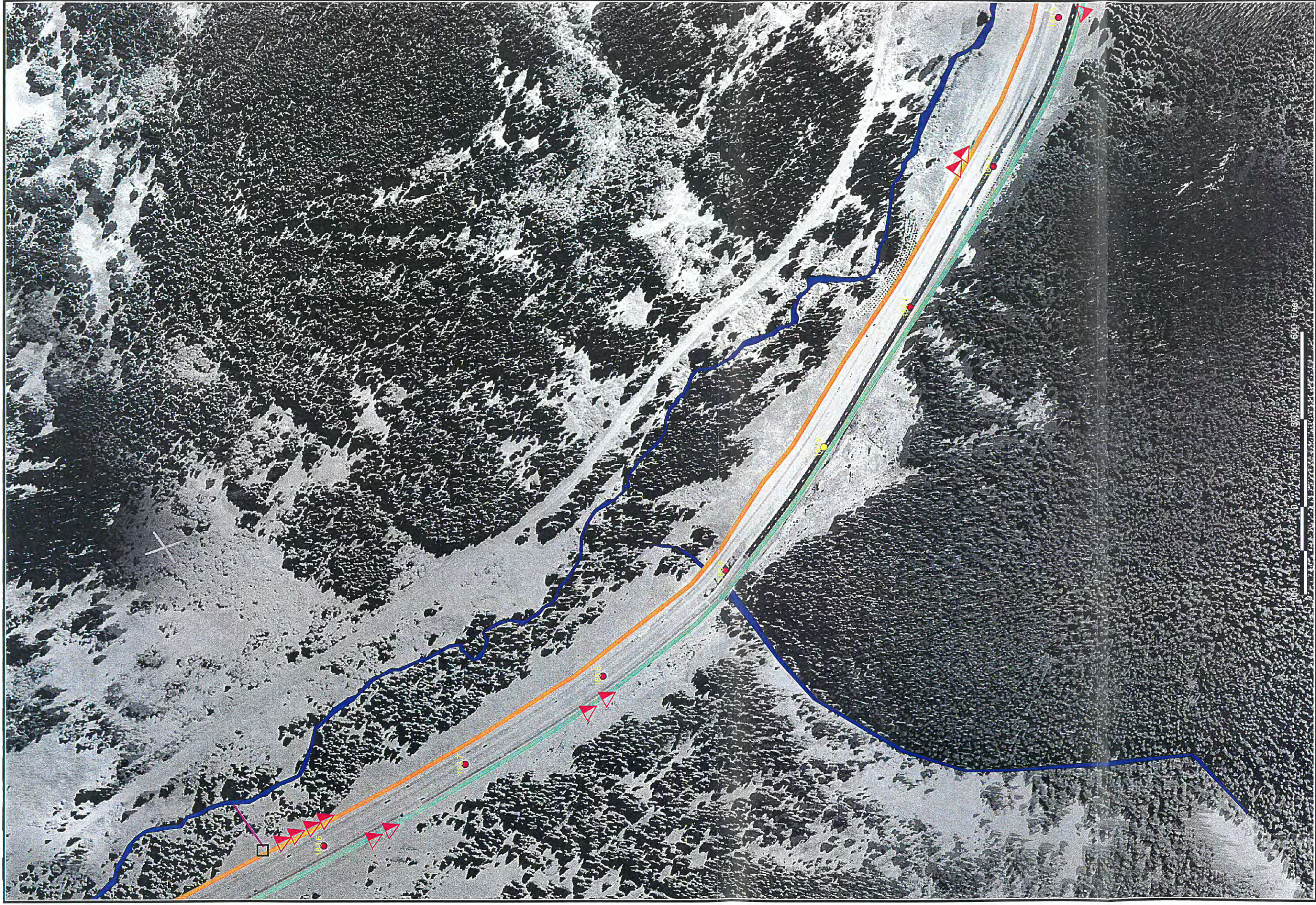
Black Gore Creek Sediment Control Action Plan

Figure 7 of 13

Legend

- | | |
|-----------------------------------|----------------|
| Clean Water Flow Bypass | Sediment Basin |
| Valley Pan Drain / Type 7 Barrier | Mileposts |
| Paved Shoulder / Knee Wall | Inlet |
| B-grade traps | Inlet |
| Rundown | |





This map is expressed in UTM Zone 13 NAD027, meters.
 Map Scale is 1:3600 (1 inch equals 300 feet).

Data Sources:
 Aerial Imagery provided by ISSI Consulting Group
 Sediment Control Action Plan data provided by Clear Creek Consultants.



J. F. SATO AND ASSOCIATES
 5898 South Kopp, Street
 Littleton, Colorado 80120
 Phone: (303) 797-1200

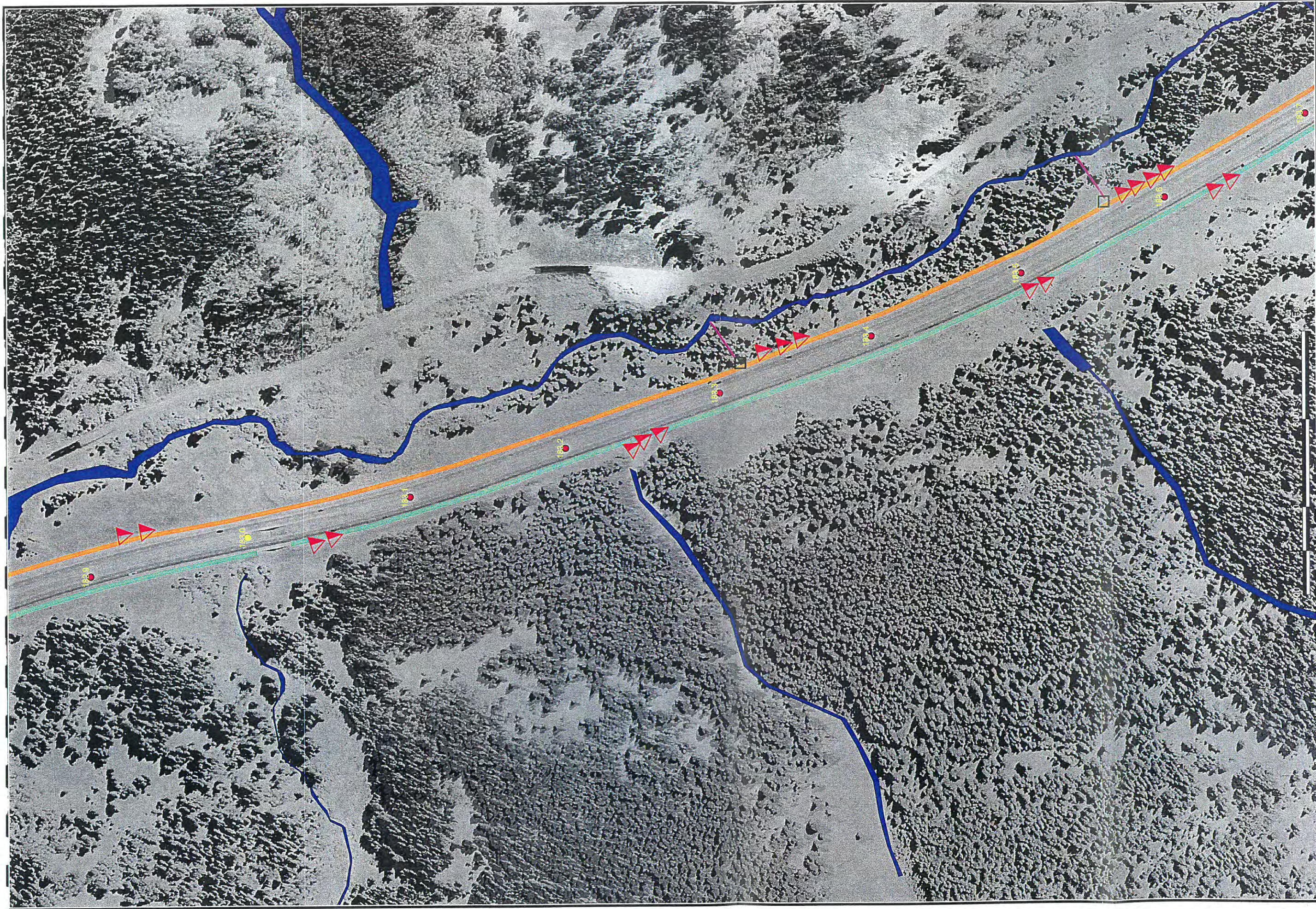
Black Gore Creek Sediment Control Action Plan

Figure: 8 of 13

Legend

- Clean Water Flow Bypass
- Valley Pan Drain / Type 7 Barrier
- Paved Shoulder / Knee Wall
- B-grade traps
- Run-down
- Sediment Basin
- Mileposts
- Inlet
- Inlet





This map is expressed in UTM Zone 13 NAD027, meters.
Map Scale is 1:3600 (1 inch equals 300 feet).

Data Sources:
Aerial Imagery provided by ISSI Consulting Group
Sediment Control Action Plan data provided by Clear Creek Consultants.



J. F. SATO AND ASSOCIATES
5898 South Rapp Street
Littleton, Colorado 80120
Phone: (303) 797-1200

Black Gore Creek Sediment Control Action Plan

Figure: 9 of 13

Legend

- Clean Water Flow Bypass
- Sediment Basin
- Mileposts
- Inlet
- Valley Pan Drain / Type 7 Barrier
- Paved Shoulder / Knee Wall
- B-grade traps
- Run-down
- Inlet
- Inlet

