

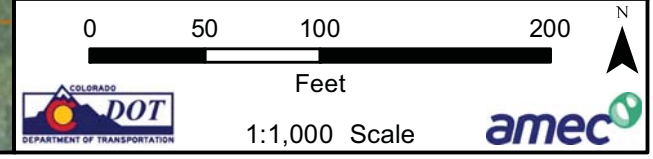
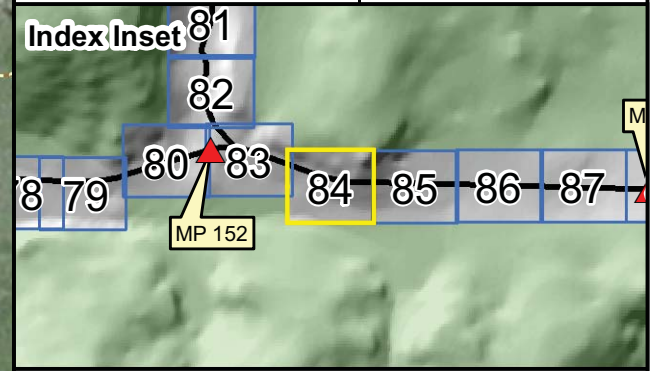




**Legend**

- Mileposts
  - Milepost Segments
  - - - 10ft Contours
  - - - Access Road
  - 40ft Contours
  - ▭ Pavestone
- Preventative BMPs**
- Clean Water Diversions
  - ▭ Limit Traction Material
  - ▭ Revegetation Zone
- Collection BMPs**
- Barriers
  - Berm
  - Culverts
  - Geo-Textile Tubes
  - Pan Drain
  - Rundown
  - Kneewall & French Drain
  - ▭ Snow Storage
  - Drain
  - Large
  - Medium
  - Small
- Ditch Types**
- Treatment BMPs**
- Bench Trap
  - ▭ Loading Dock Trap
  - ⊙ Sand Cans
  - Large
  - Medium
  - Small
- Sediment Basins**

Map Date: 7/2013  
 Data Source: CDOT, Routt County, Bing Imagery





**Legend**

- Mileposts
- Milepost Segments
- 10ft Contours
- Access Road
- 40ft Contours
- Pavestone

**Preventative BMPs**

- Clean Water Diversions
- Limit Traction Material
- Revegetation Zone

**Collection BMPs**

- Barriers
- Berm
- Culverts
- Geo-Textile Tubes
- Pan Drain
- Rundown
- Kneewall & French Drain
- Snow Storage
- Drain
- Large
- Medium
- Small

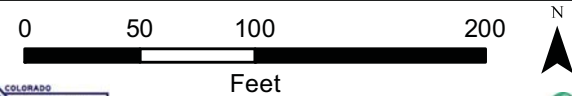
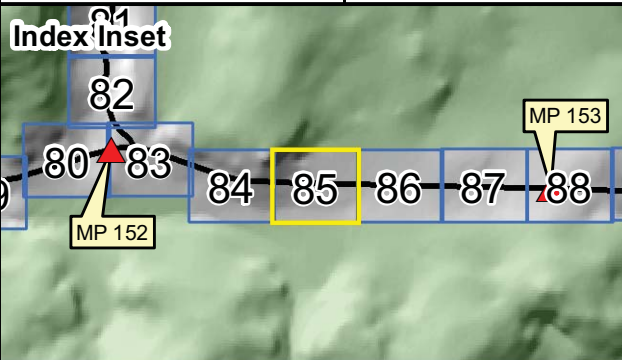
**Ditch Types**

**Treatment BMPs**

- Bench Trap
- Loading Dock Trap
- Sand Cans
- Large
- Medium
- Small

**Sediment Basins**

Map Date: 7/2013  
 Data Source: CDOT,  
 Routt County, Bing Imagery



1:1,000 Scale





**Legend**

- Mileposts
- Milepost Segments
- 10ft Contours
- Access Road
- 40ft Contours
- Pavestone

**Preventative BMPs**

- Clean Water Diversions
- Limit Traction Material
- Revegetation Zone

**Collection BMPs**

- Barriers
- Berm
- Culverts
- Geo-Textile Tubes
- Pan Drain
- Rundown
- Kneewall & French Drain
- Snow Storage
- Drain
- Large
- Medium
- Small

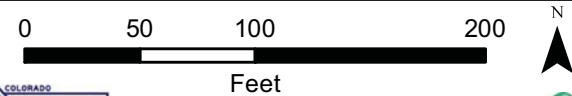
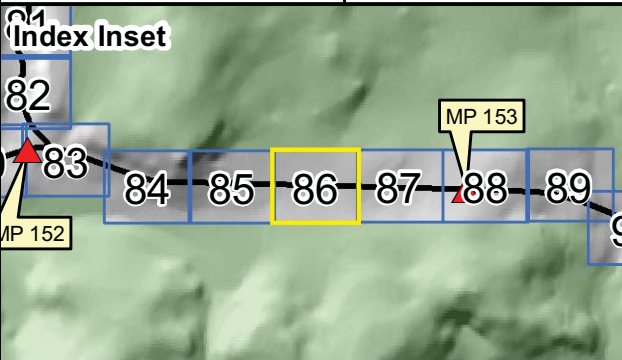
**Ditch Types**

**Treatment BMPs**

- Bench Trap
- Loading Dock Trap
- Sand Cans
- Large
- Medium
- Small

**Sediment Basins**

Map Date: 7/2013  
 Data Source: CDOT,  
 Routt County, Bing Imagery



1:1,000 Scale





**Legend**

- Mileposts
- Milepost Segments
- 10ft Contours
- Access Road
- 40ft Contours
- Pavestone

**Preventative BMPs**

- Clean Water Diversions
- Limit Traction Material
- Revegetation Zone

**Collection BMPs**

- Barriers
- Berm
- Culverts
- Geo-Textile Tubes
- Pan Drain
- Rundown
- Kneewall & French Drain
- Snow Storage
- X—X Drain
- Large
- Medium
- Small

**Ditch Types**

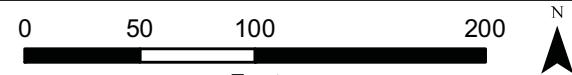
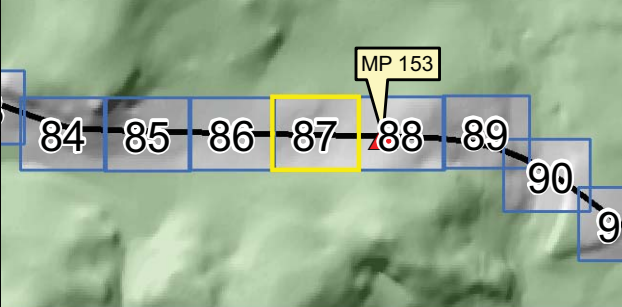
**Treatment BMPs**

- Bench Trap
- Loading Dock Trap
- Sand Cans
- Large
- Medium
- Small

**Sediment Basins**

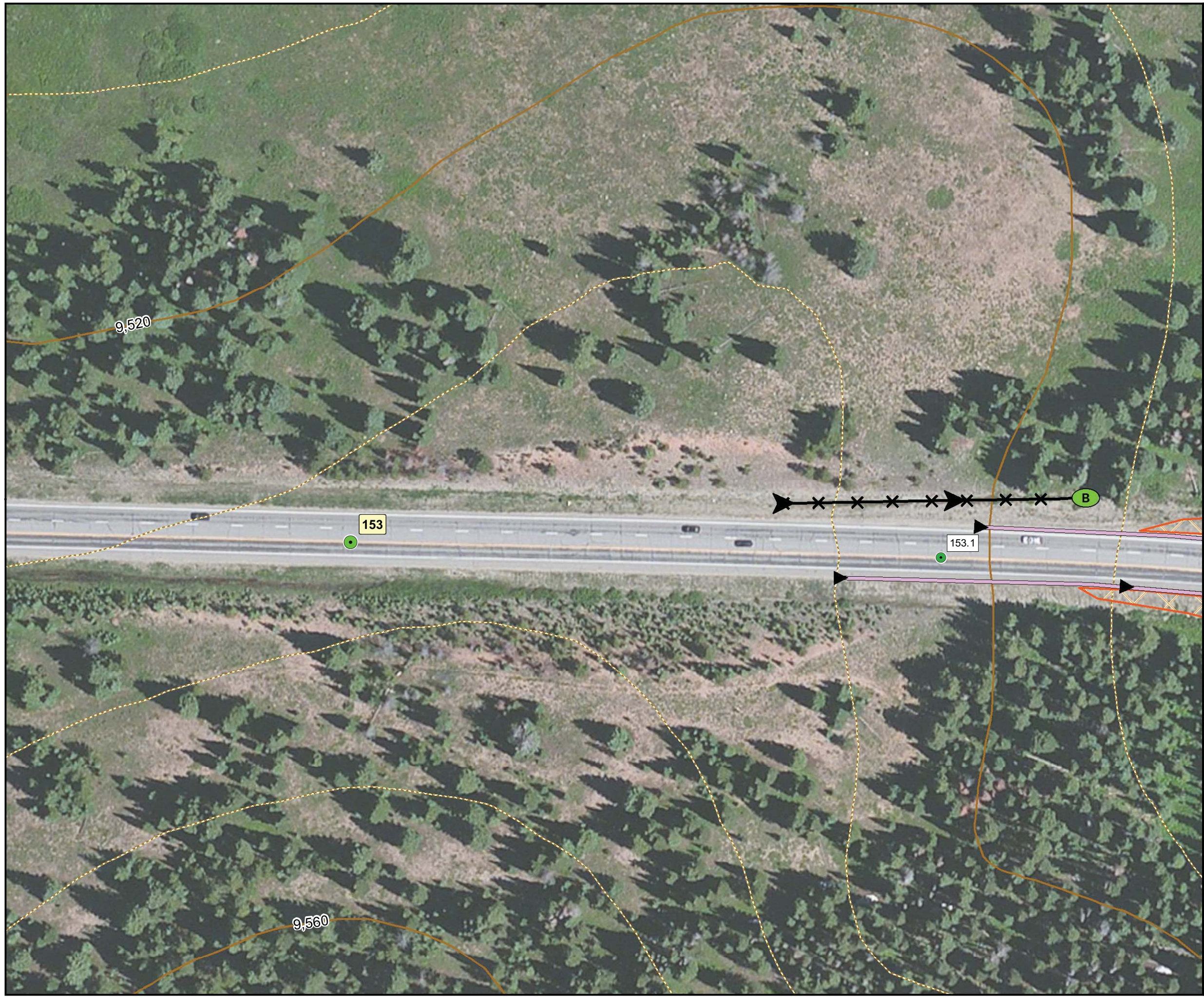
Map Date: 7/2013  
 Data Source: CDOT,  
 Routt County, Bing Imagery

**Index Inset**



1:1,000 Scale





**Legend**

- Mileposts
- Milepost Segments
- - - 10ft Contours
- - - Access Road
- 40ft Contours
- ▣ Pavestone

**Preventative BMPs**

- Clean Water Diversions
- ▨ Limit Traction Material
- ▨ Revegetation Zone

**Collection BMPs**

- Barriers
- Berm
- Culverts
- Geo-Textile Tubes
- Pan Drain
- Rundown
- Kneewall & French Drain
- ▨ Snow Storage
- Drain
- Large
- Medium
- Small

**Ditch Types**

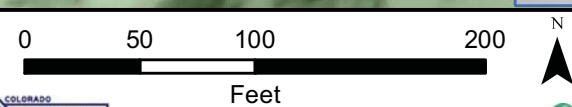
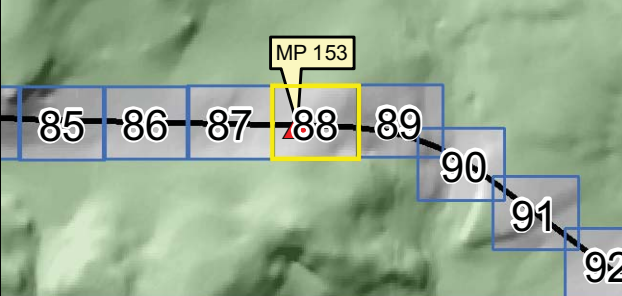
**Treatment BMPs**

- Bench Trap
- ▨ Loading Dock Trap
- ⊙ Sand Cans
- Large
- Medium
- Small

**Sediment Basins**

Map Date: 7/2013  
 Data Source: CDOT,  
 Routt County, Bing Imagery

**Index Inset**



1:1,000 Scale





**Legend**

- Mileposts
- Milepost Segments
- - - 10ft Contours
- - - Access Road
- 40ft Contours
- Pavestone

**Preventative BMPs**

- Clean Water Diversions
- ▨ Limit Traction Material
- ▨ Revegetation Zone

**Collection BMPs**

- ▬ Barriers
- Berm
- ▬ Culverts
- Geo-Textile Tubes
- Pan Drain
- Rundown
- ▬ Kneewall & French Drain
- ▨ Snow Storage
- ✂ Drain
- ▬ Large
- ▬ Medium
- ▬ Small

**Ditch Types**

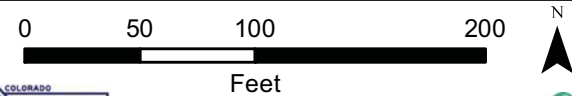
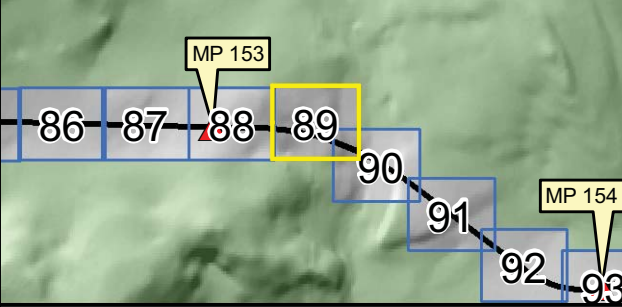
**Treatment BMPs**

- ▬ Bench Trap
- Loading Dock Trap
- ◎ Sand Cans
- B Large
- B Medium
- B Small

**Sediment Basins**

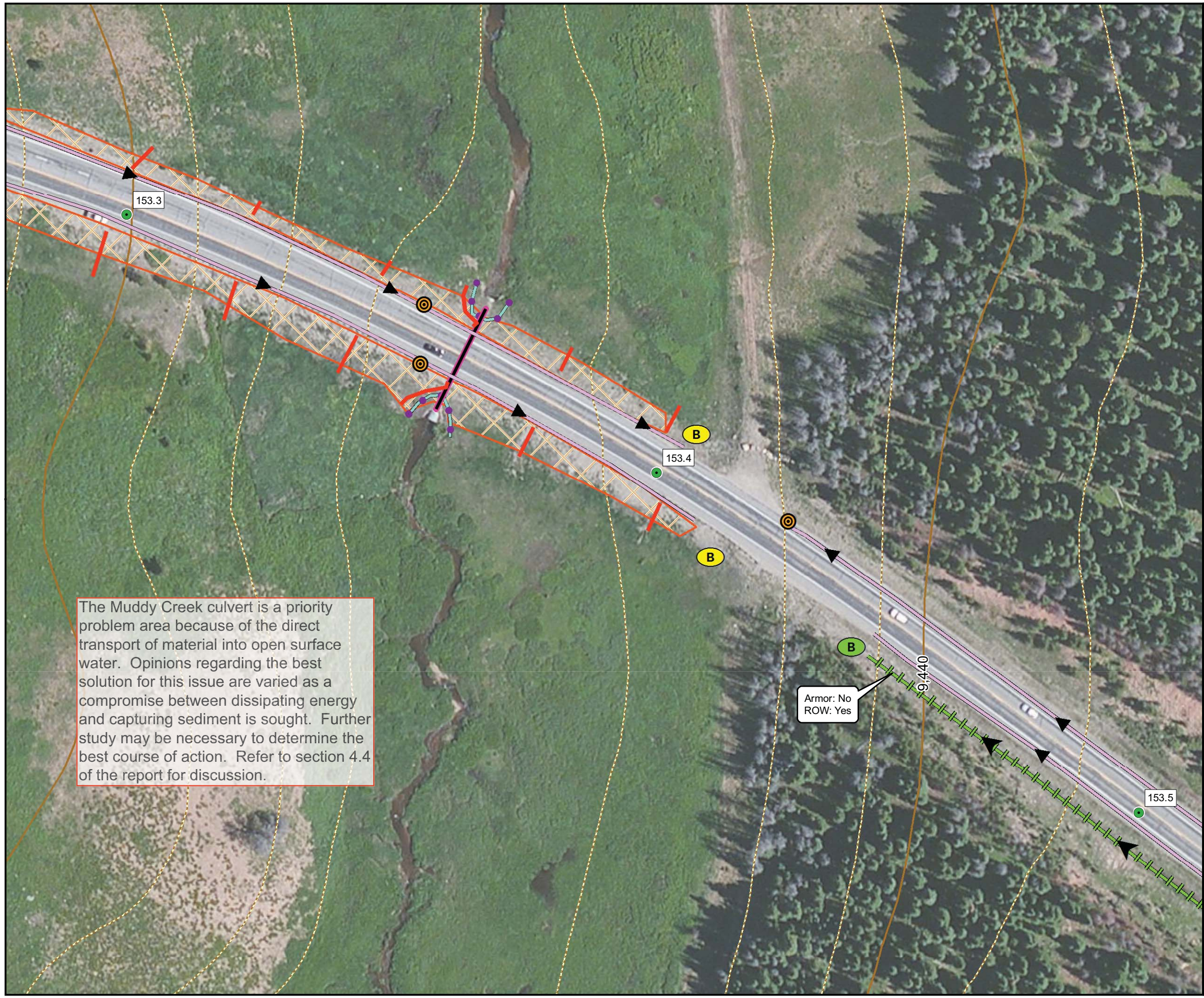
Map Date: 7/2013  
 Data Source: CDOT,  
 Routt County, Bing Imagery

**Index Inset**



1:1,000 Scale





The Muddy Creek culvert is a priority problem area because of the direct transport of material into open surface water. Opinions regarding the best solution for this issue are varied as a compromise between dissipating energy and capturing sediment is sought. Further study may be necessary to determine the best course of action. Refer to section 4.4 of the report for discussion.

Armor: No  
ROW: Yes

**Legend**

- Mileposts
- Milepost Segments
- - - 10ft Contours
- - - Access Road
- - - 40ft Contours
- Pavestone

**Preventative BMPs**

- Clean Water Diversions
- ▨ Limit Traction Material
- ▨ Revegetation Zone

**Collection BMPs**

- Barriers
- Berm
- Culverts
- Geo-Textile Tubes
- Pan Drain
- Rundown
- Kneewall & French Drain
- ▨ Snow Storage
- ✂ Drain
- ▨ Large
- ▨ Medium
- ▨ Small

**Ditch Types**

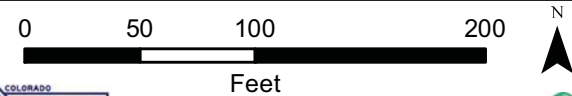
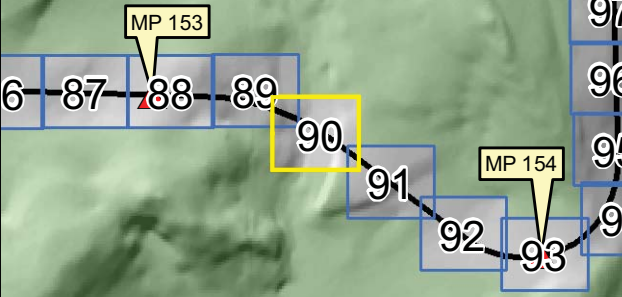
**Treatment BMPs**

- Bench Trap
- ▨ Loading Dock Trap
- Sand Cans
- Large
- Medium
- Small

**Sediment Basins**

Map Date: 7/2013  
Data Source: CDOT, Routt County, Bing Imagery

**Index Inset**



1:1,000 Scale







**Legend**

- Mileposts
- Milepost Segments
- - - 10ft Contours
- - - Access Road
- 40ft Contours
- ▭ Pavestone

**Preventative BMPs**

- Clean Water Diversions
- ▭ Limit Traction Material
- ▭ Revegetation Zone

**Collection BMPs**

- Barriers
- Berm
- Culverts
- Geo-Textile Tubes
- Pan Drain
- Rundown
- Kneewall & French Drain
- ▭ Snow Storage
- Drain
- ▭ Large
- ▭ Medium
- ▭ Small

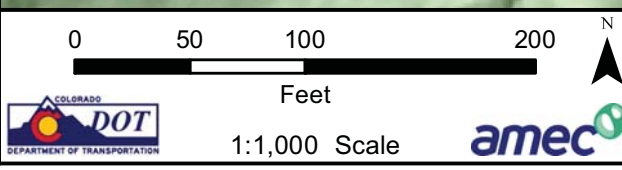
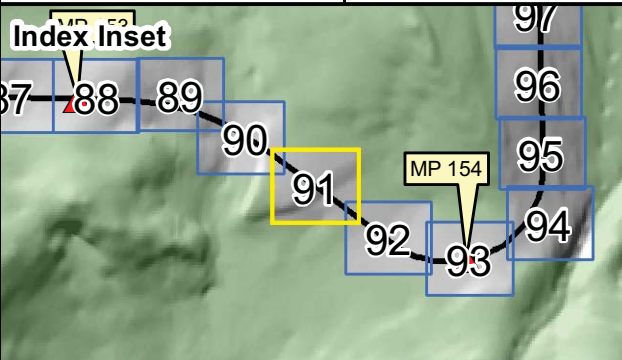
**Ditch Types**

**Treatment BMPs**

- Bench Trap
- ▭ Loading Dock Trap
- ⊙ Sand Cans
- Large
- Medium
- Small

**Sediment Basins**

Map Date: 7/2013  
Data Source: CDOT, Routt County, Bing Imagery





**Legend**

- Mileposts
- Milepost Segments
- - - 10ft Contours
- - - Access Road
- 40ft Contours
- Pavestone

**Preventative BMPs**

- Clean Water Diversions
- Limit Traction Material
- Revegetation Zone

**Collection BMPs**

- Barriers
- Berm
- Culverts
- Geo-Textile Tubes
- Pan Drain
- Rundown
- Kneewall & French Drain
- Snow Storage
- ✕ Drain
- Large
- Medium
- Small

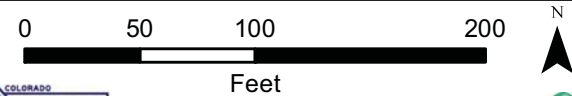
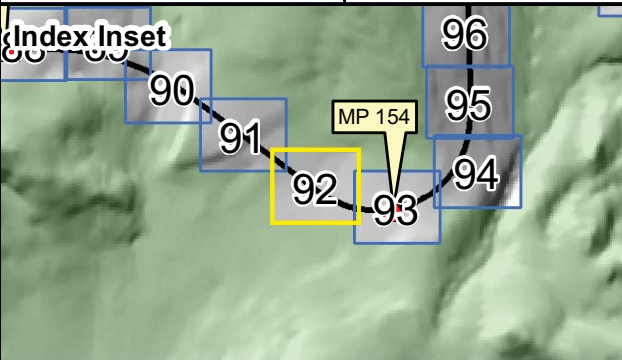
**Ditch Types**

**Treatment BMPs**

- Bench Trap
- Loading Dock Trap
- Sand Cans
- Large
- Medium
- Small

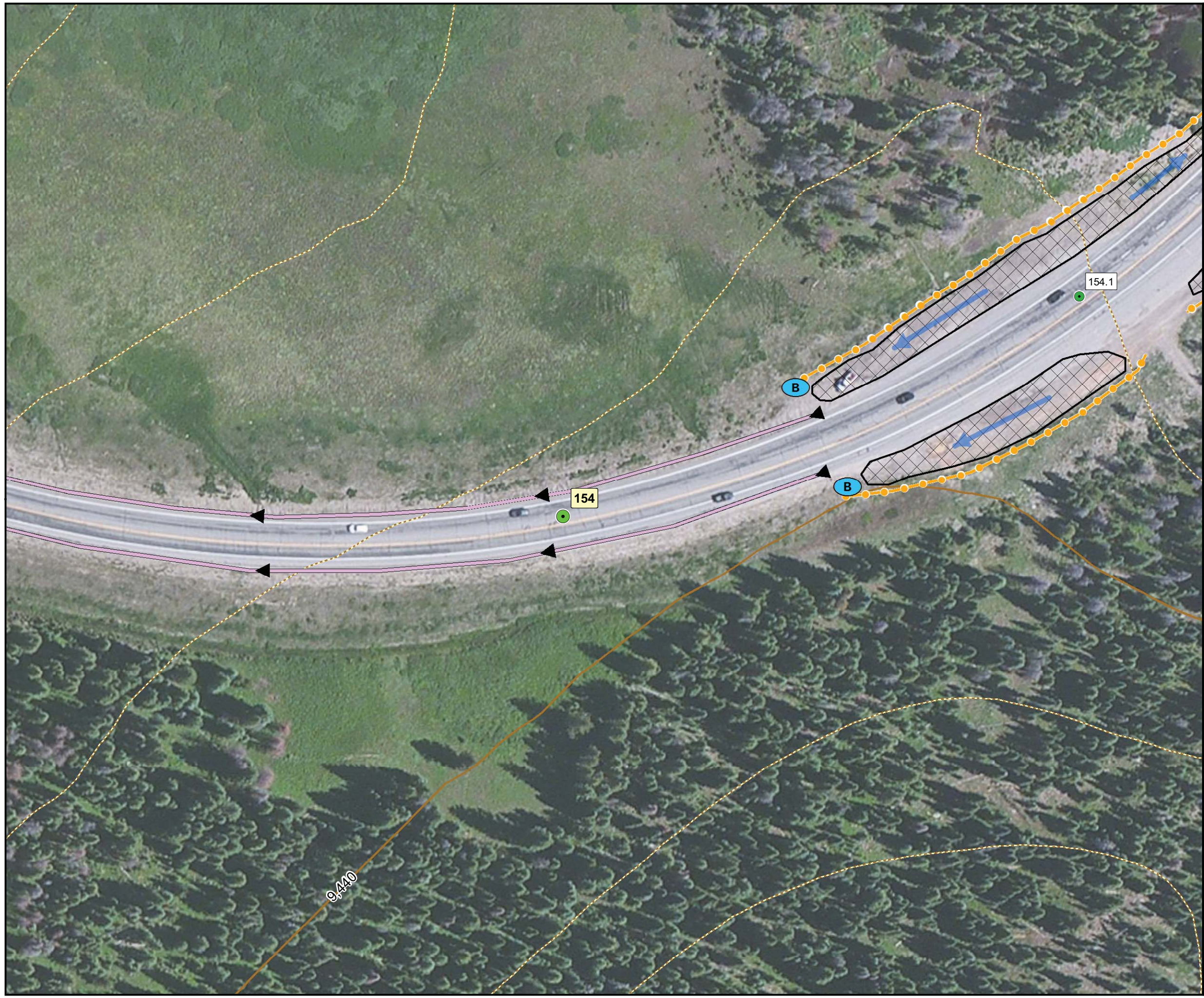
**Sediment Basins**

Map Date: 7/2013  
 Data Source: CDOT,  
 Routt County, Bing Imagery



1:1,000 Scale





**Legend**

- Mileposts
- Milepost Segments
- - - 10ft Contours
- - - Access Road
- 40ft Contours
- Pavestone

**Preventative BMPs**

- Clean Water Diversions
- Limit Traction Material
- Revegetation Zone

**Collection BMPs**

- Barriers
- Berm
- Culverts
- Geo-Textile Tubes
- Pan Drain
- Rundown
- Kneewall & French Drain
- Snow Storage
- ✕ Drain
- ||| Large
- ||| Medium
- ||| Small

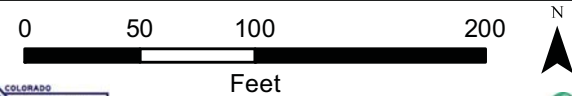
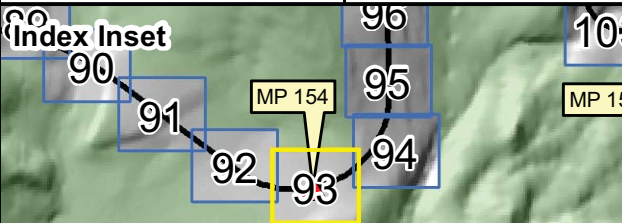
**Ditch Types**

**Treatment BMPs**

- Bench Trap
- Loading Dock Trap
- ◎ Sand Cans
- Large
- Medium
- Small

**Sediment Basins**

Map Date: 7/2013  
 Data Source: CDOT,  
 Routt County, Bing Imagery



1:1,000 Scale

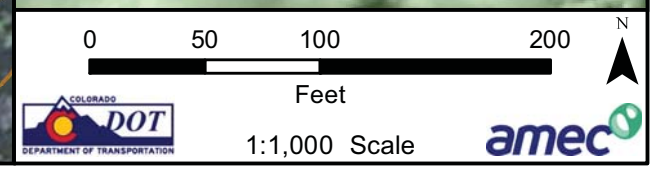
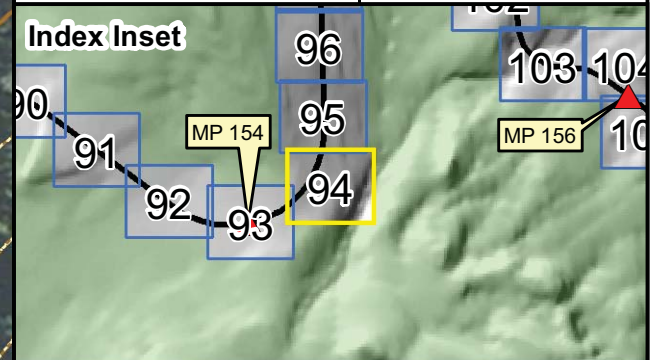




**Legend**

- Mileposts
  - Milepost Segments
  - 10ft Contours
  - Access Road
  - 40ft Contours
  - Pavestone
- Preventative BMPs**
- Clean Water Diversions
  - Limit Traction Material
  - Revegetation Zone
- Collection BMPs**
- Barriers
  - Berm
  - Culverts
  - Geo-Textile Tubes
  - Pan Drain
  - Rundown
  - Kneewall & French Drain
  - Snow Storage
  - X Drain
  - Large
  - Medium
  - Small
- Treatment BMPs**
- Bench Trap
  - Loading Dock Trap
  - Sand Cans
  - Large
  - Medium
  - Small
- Sediment Basins**

Map Date: 7/2013  
 Data Source: CDOT,  
 Routt County, Bing Imagery





**Legend**

- Mileposts
- Milepost Segments
- 10ft Contours
- Access Road
- 40ft Contours
- Pavestone

**Preventative BMPs**

- Clean Water Diversions
- Limit Traction Material
- Revegetation Zone

**Collection BMPs**

- Barriers
- Berm
- Culverts
- Geo-Textile Tubes
- Pan Drain
- Rundown
- Kneewall & French Drain
- Snow Storage
- X Drain
- Large
- Medium
- Small

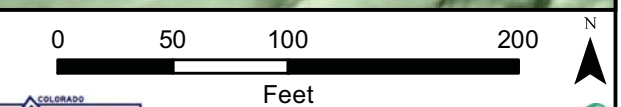
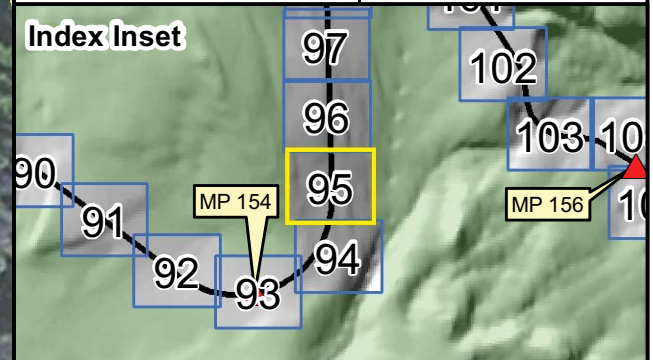
**Ditch Types**

**Treatment BMPs**

- Bench Trap
- Loading Dock Trap
- Sand Cans
- Large
- Medium
- Small

**Sediment Basins**

Map Date: 7/2013  
 Data Source: CDOT,  
 Routt County, Bing Imagery



1:1,000 Scale









**Legend**

- Mileposts
- Milepost Segments
- - - 10ft Contours
- - - Access Road
- 40ft Contours
- Pavestone

**Preventative BMPs**

- Clean Water Diversions
- Limit Traction Material
- Revegetation Zone

**Collection BMPs**

- Barriers
- Berm
- Culverts
- Geo-Textile Tubes
- Pan Drain
- Rundown
- Kneewall & French Drain
- Snow Storage
- X—X Drain
- Large
- Medium
- Small

**Ditch Types**

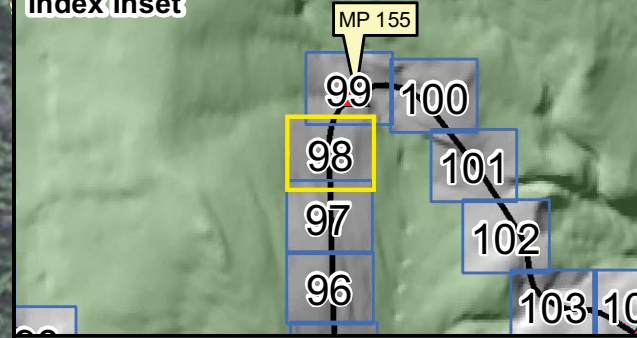
**Treatment BMPs**

- Bench Trap
- Loading Dock Trap
- Sand Cans
- Large
- Medium
- Small

**Sediment Basins**

Map Date: 7/2013  
 Data Source: CDOT,  
 Routt County, Bing Imagery

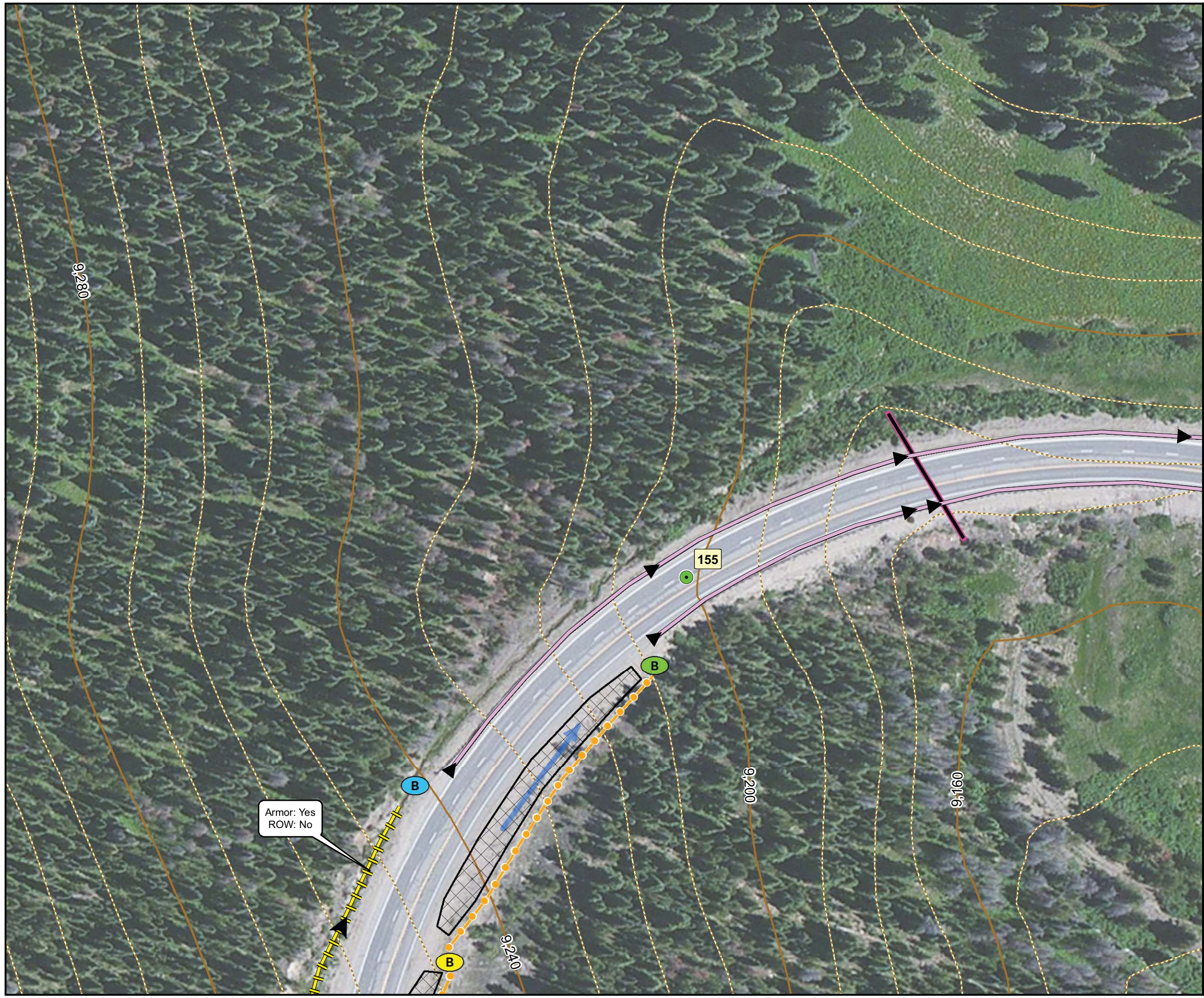
**Index Inset**



0 50 100 200 Feet

1:1,000 Scale





**Legend**

- Mileposts      ● Milepost Segments
- - - 10ft Contours      - - - Access Road
- 40ft Contours      ■ Pavestone

**Preventative BMPs**

- Clean Water Diversions
- Limit Traction Material
- Revegetation Zone

**Collection BMPs**

- Barriers
- Berm
- Culverts
- Geo-Textile Tubes
- Pan Drain
- Rundown
- Kneewall & French Drain
- Snow Storage
- X Drain
- ||| Large
- ||| Medium
- ||| Small

**Ditch Types**

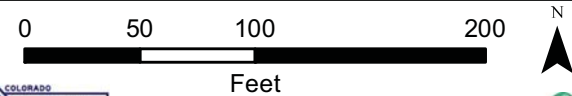
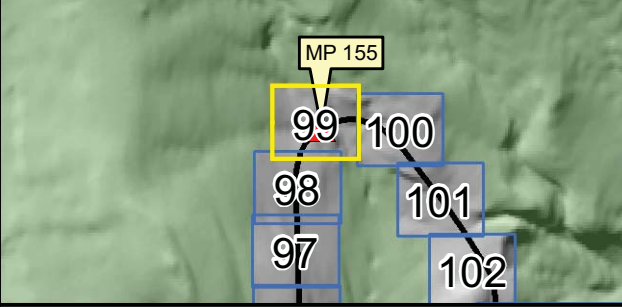
**Treatment BMPs**

- Bench Trap
- Loading Dock Trap
- Sand Cans
- B Large
- B Medium
- B Small

**Sediment Basins**

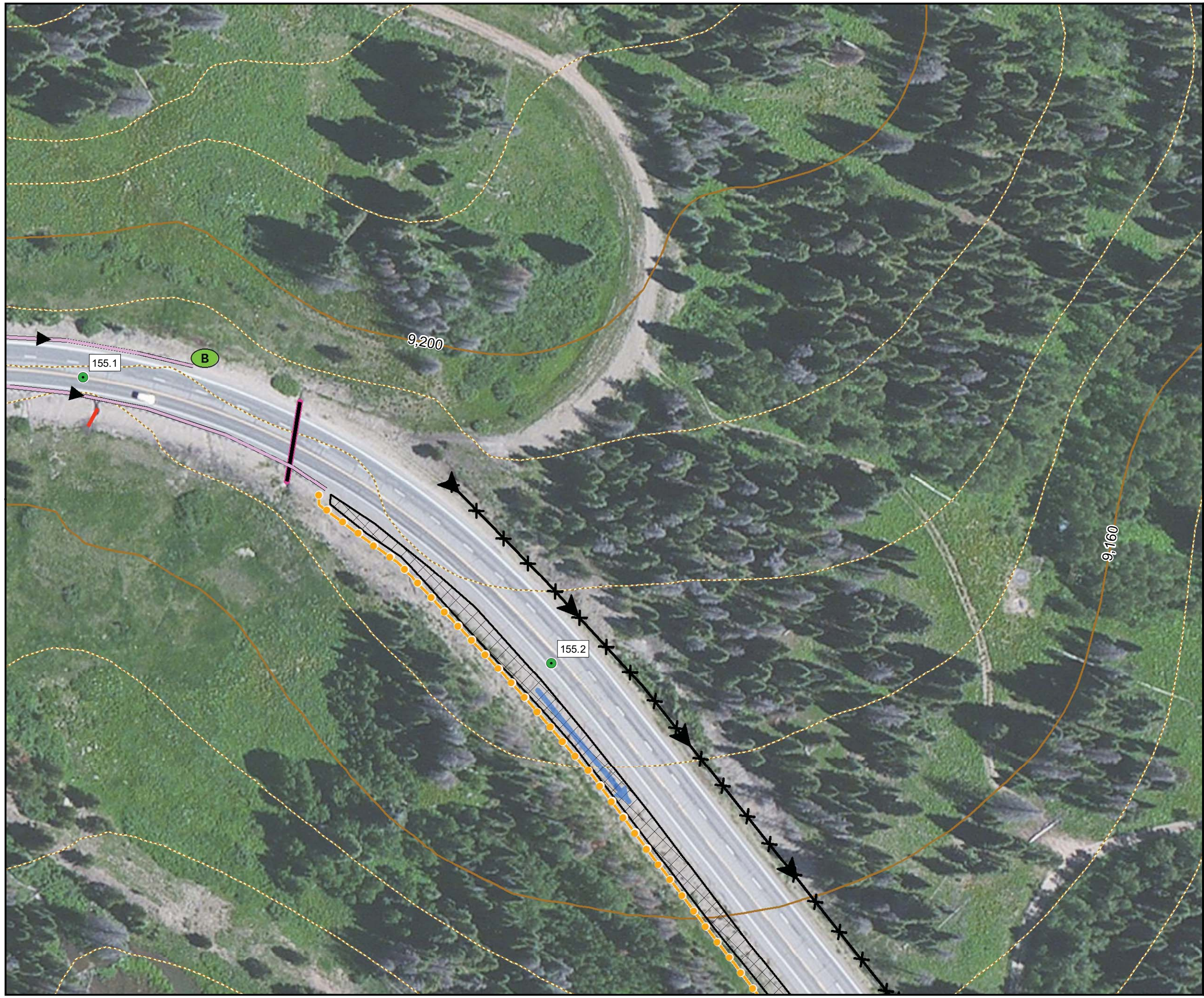
Map Date: 7/2013  
 Data Source: CDOT,  
 Routt County, Bing Imagery

**Index Inset**



1:1,000 Scale





**Legend**

- Mileposts
- Milepost Segments
- - - 10ft Contours
- - - Access Road
- 40ft Contours
- Pavestone

**Preventative BMPs**

- Clean Water Diversions
- Limit Traction Material
- Revegetation Zone

**Collection BMPs**

- Barriers
- Berm
- Culverts
- Geo-Textile Tubes
- Pan Drain
- Rundown
- Kneewall & French Drain
- Snow Storage
- ✕ Drain
- ||| Large
- ||| Medium
- ||| Small

**Ditch Types**

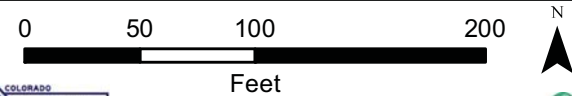
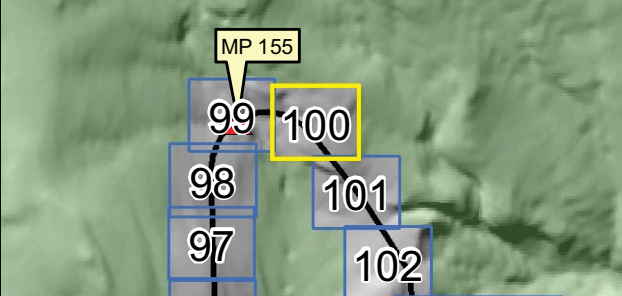
**Treatment BMPs**

- Bench Trap
- Loading Dock Trap
- Sand Cans
- Large
- Medium
- Small

**Sediment Basins**

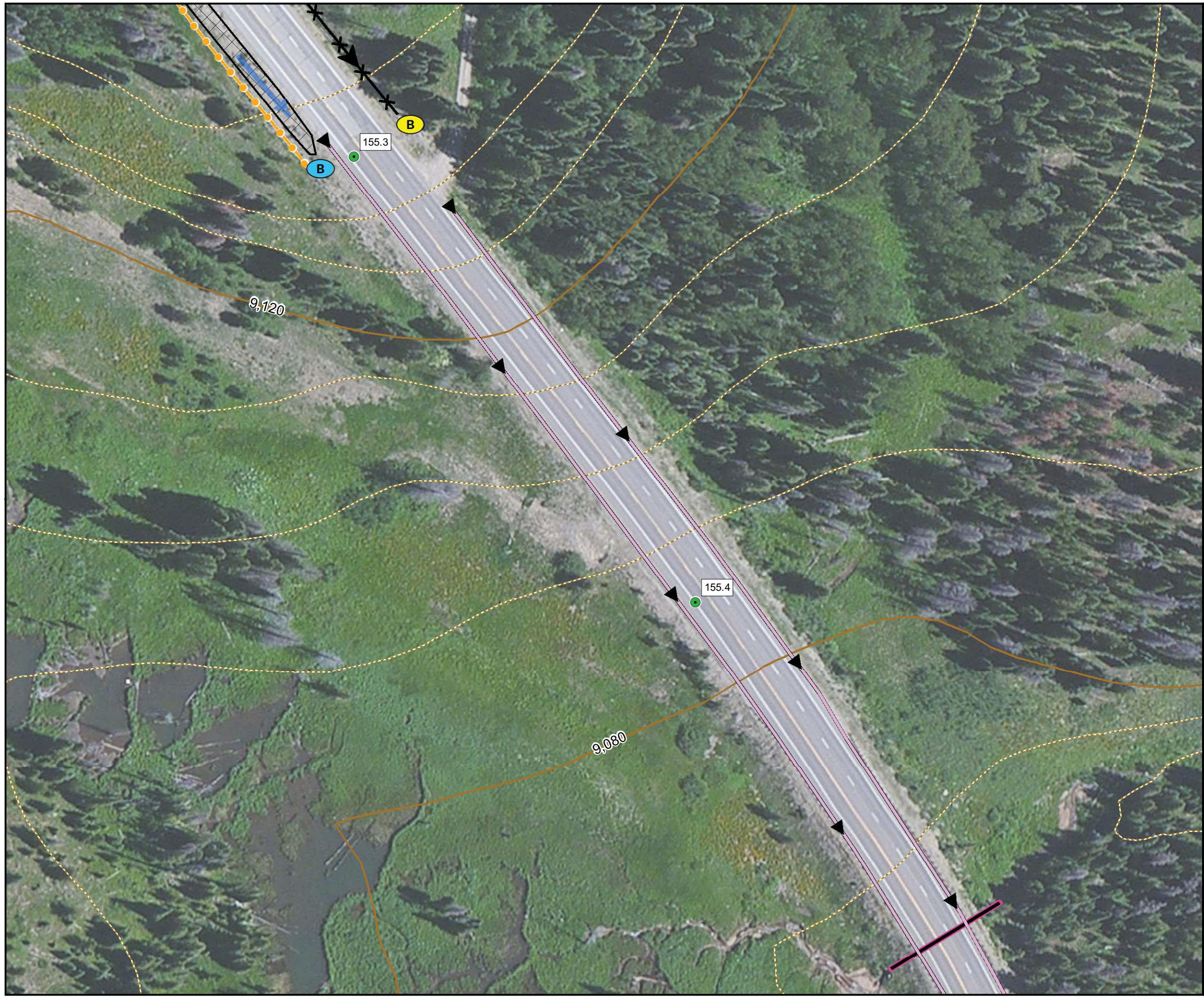
Map Date: 7/2013  
 Data Source: CDOT,  
 Routt County, Bing Imagery

**Index Inset**



1:1,000 Scale





**Legend**

- Mileposts
- Milepost Segments
- - - 10ft Contours
- - - Access Road
- 40ft Contours
- Pavestone

**Preventative BMPs**

- Clean Water Diversions
- ▨ Limit Traction Material
- ▨ Revegetation Zone

**Collection BMPs**

- Barriers
- Berm
- Culverts
- Geo-Textile Tubes
- Pan Drain
- Rundown
- Kneewall & French Drain
- ▨ Snow Storage
- ✕ Drain
- ▨ Large
- ▨ Medium
- ▨ Small

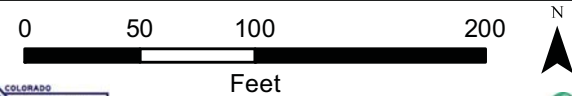
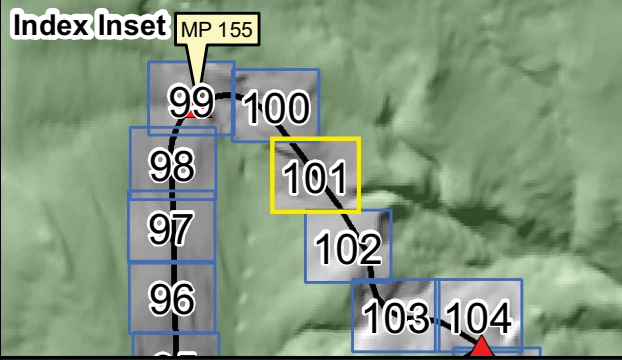
**Ditch Types**

**Treatment BMPs**

- Bench Trap
- ▨ Loading Dock Trap
- Sand Cans
- Large
- Medium
- Small

**Sediment Basins**

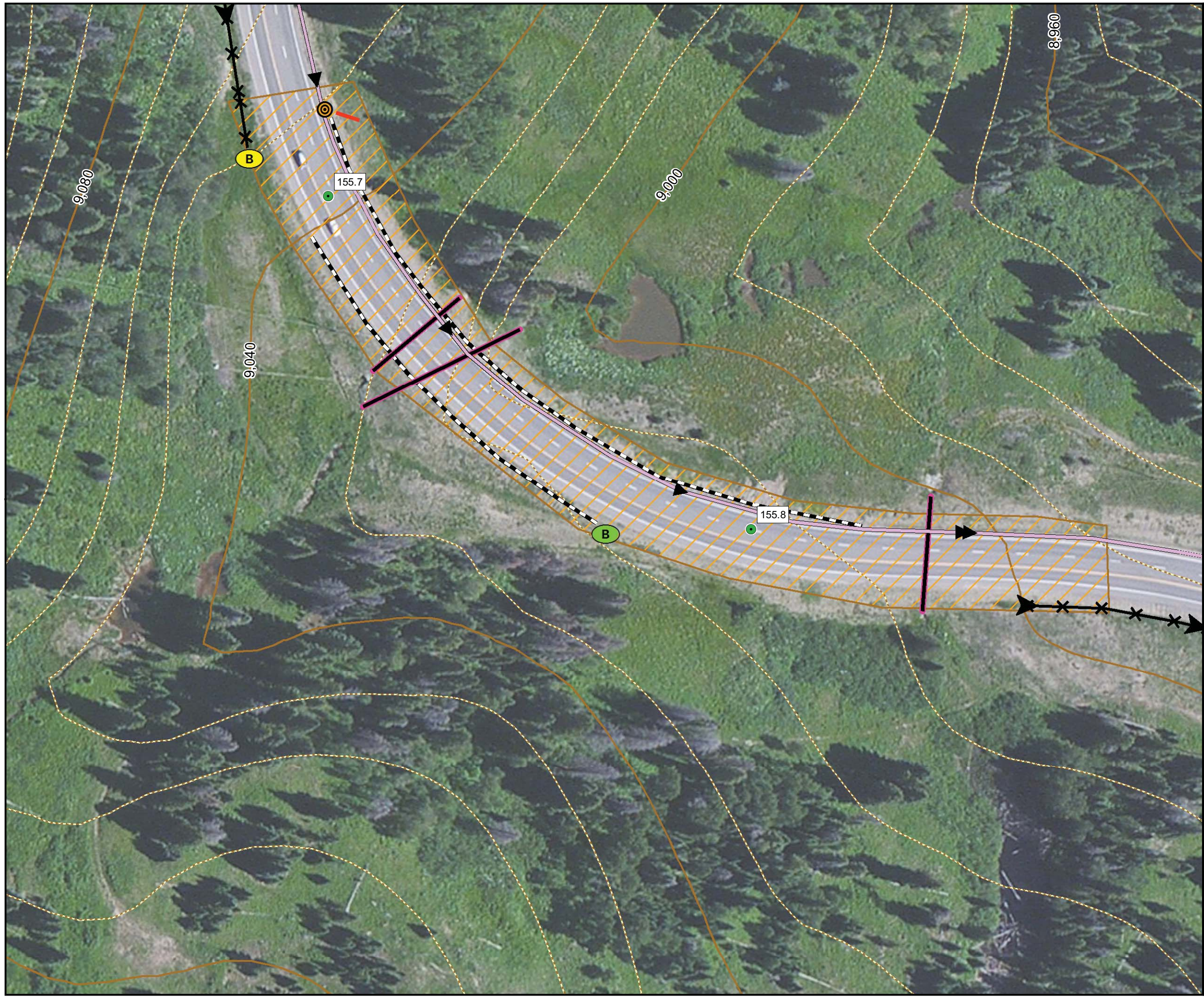
Map Date: 7/2013  
 Data Source: CDOT, Routt County, Bing Imagery



1:1,000 Scale







**Legend**

- Mileposts
- Milepost Segments
- - - 10ft Contours
- - - Access Road
- 40ft Contours
- ▭ Pavestone

**Preventative BMPs**

- Clean Water Diversions
- ▨ Limit Traction Material
- ▨ Revegetation Zone

**Collection BMPs**

- Barriers
- Berm
- Culverts
- Geo-Textile Tubes
- Pan Drain
- Rundown
- Kneewall & French Drain
- ▨ Snow Storage
- Drain
- Large
- Medium
- Small

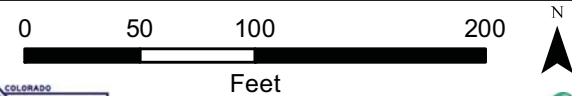
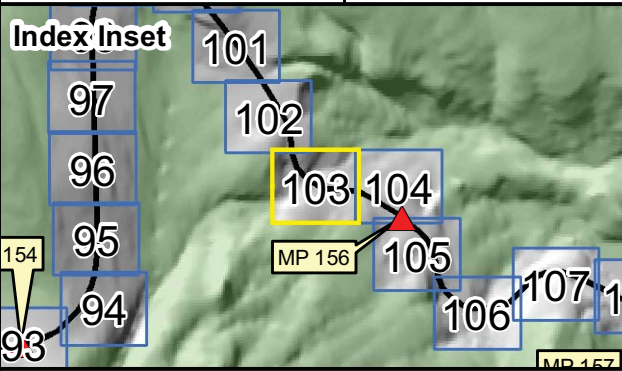
**Ditch Types**

**Treatment BMPs**

- Bench Trap
- ▭ Loading Dock Trap
- ⊙ Sand Cans
- ⊙ Large
- ⊙ Medium
- ⊙ Small

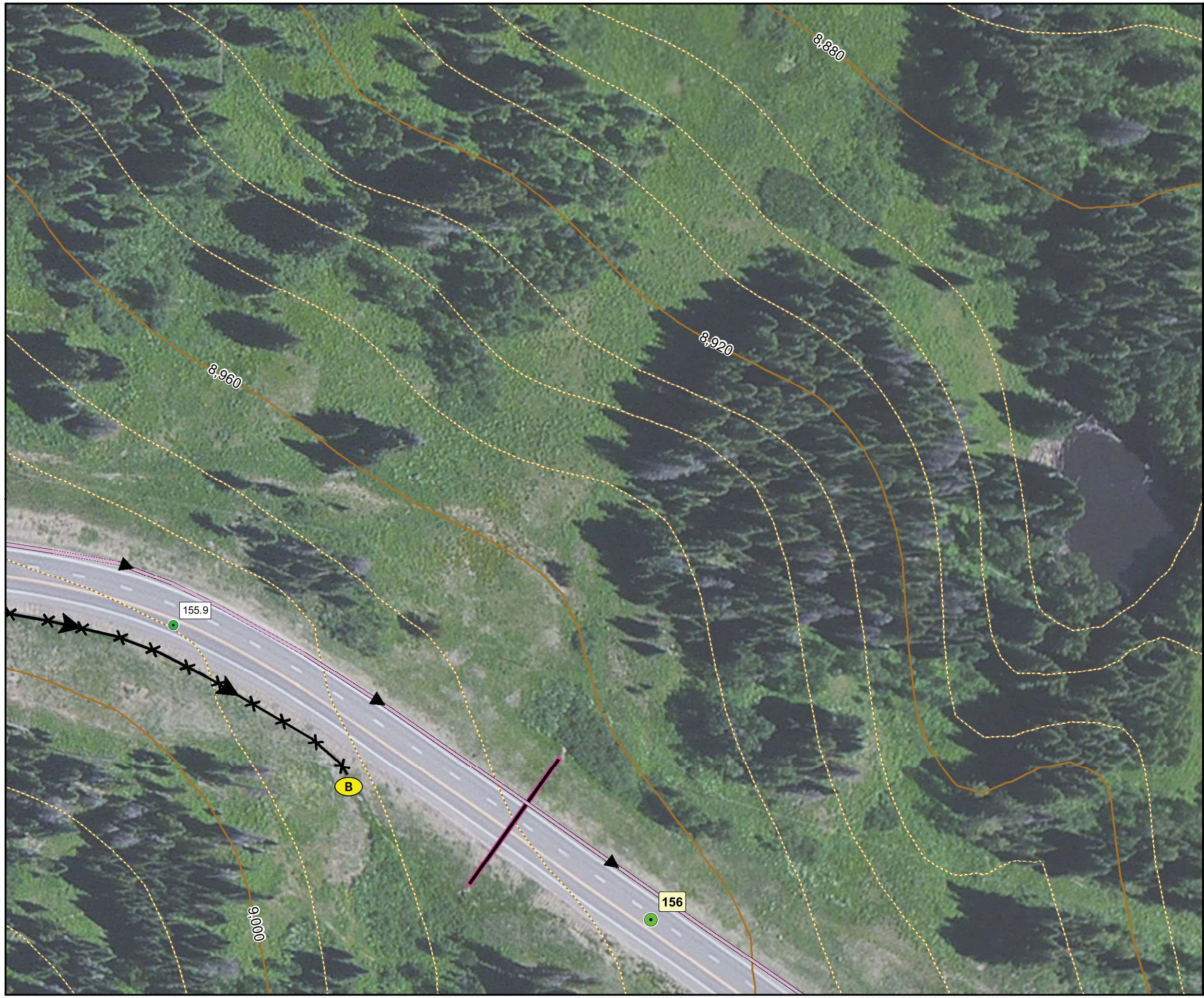
**Sediment Basins**

Map Date: 7/2013  
 Data Source: CDOT,  
 Routt County, Bing Imagery



1:1,000 Scale





**Legend**

- Mileposts
- Milepost Segments
- 10ft Contours
- Access Road
- 40ft Contours
- Pavestone

**Preventative BMPs**

- Clean Water Diversions
- Limit Traction Material
- Revegetation Zone

**Collection BMPs**

- Barriers
- Berm
- Culverts
- Geo-Textile Tubes
- Pan Drain
- Rundown
- Kneewall & French Drain
- Snow Storage
- X Drain
- Large
- Medium
- Small

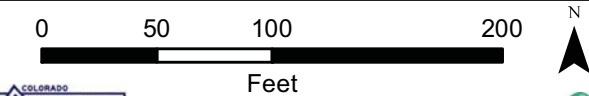
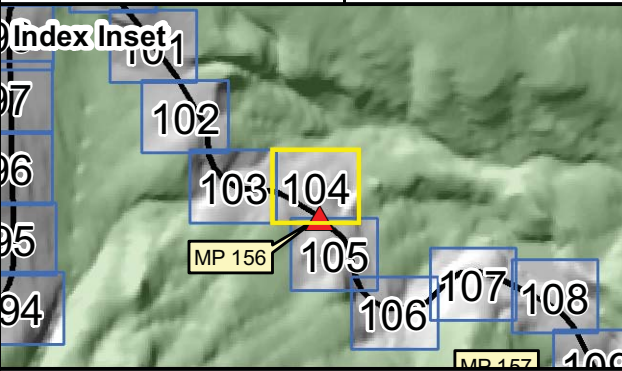
**Ditch Types**

**Treatment BMPs**

- Bench Trap
- Loading Dock Trap
- Sand Cans
- Large
- Medium
- Small

**Sediment Basins**

Map Date: 7/2013  
 Data Source: CDOT,  
 Routt County, Bing Imagery



1:1,000 Scale





**Legend**

- Mileposts
- Milepost Segments
- - - 10ft Contours
- - - Access Road
- 40ft Contours
- Pavestone

**Preventative BMPs**

- Clean Water Diversions
- Limit Traction Material
- Revegetation Zone

**Collection BMPs**

- Barriers
- Berm
- Culverts
- Geo-Textile Tubes
- Pan Drain
- Rundown
- Kneewall & French Drain
- Snow Storage
- X—X Drain
- ||| Large
- ||| Medium
- ||| Small

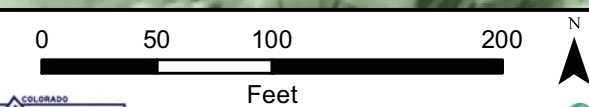
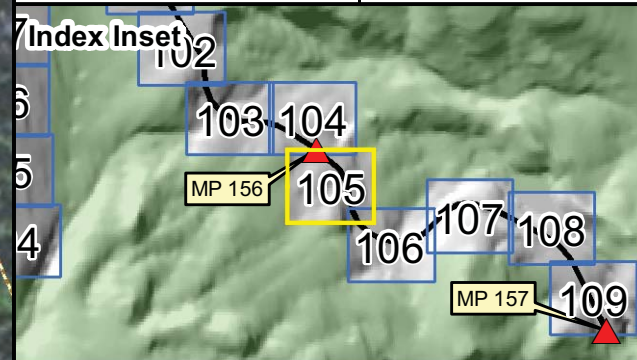
**Ditch Types**

**Treatment BMPs**

- Bench Trap
- Loading Dock Trap
- Sand Cans
- Large
- Medium
- Small

**Sediment Basins**

Map Date: 7/2013  
 Data Source: CDOT,  
 Routt County, Bing Imagery



1:1,000 Scale









**Legend**

- Mileposts
- Milepost Segments
- - - 10ft Contours
- - - Access Road
- 40ft Contours
- Pavestone

**Preventative BMPs**

- Clean Water Diversions
- ▨ Limit Traction Material
- ▨ Revegetation Zone

**Collection BMPs**

- Barriers
- Berm
- Culverts
- Geo-Textile Tubes
- Pan Drain
- Rundown
- Kneewall & French Drain
- ▨ Snow Storage
- ✕ Drain
- ▨ Large
- ▨ Medium
- ▨ Small

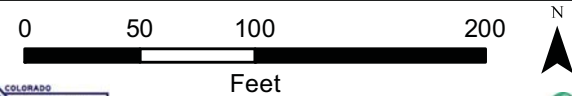
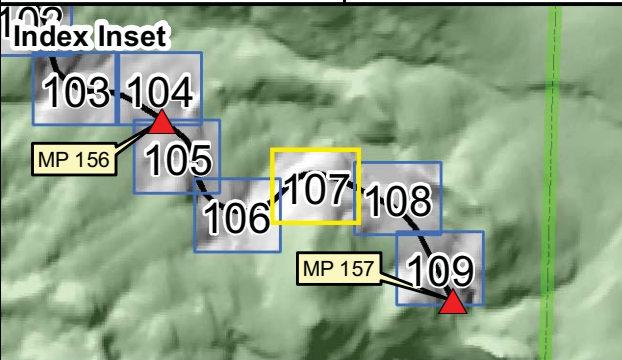
**Ditch Types**

**Treatment BMPs**

- Bench Trap
- ▨ Loading Dock Trap
- ⊙ Sand Cans
- ⊙ Large
- ⊙ Medium
- ⊙ Small

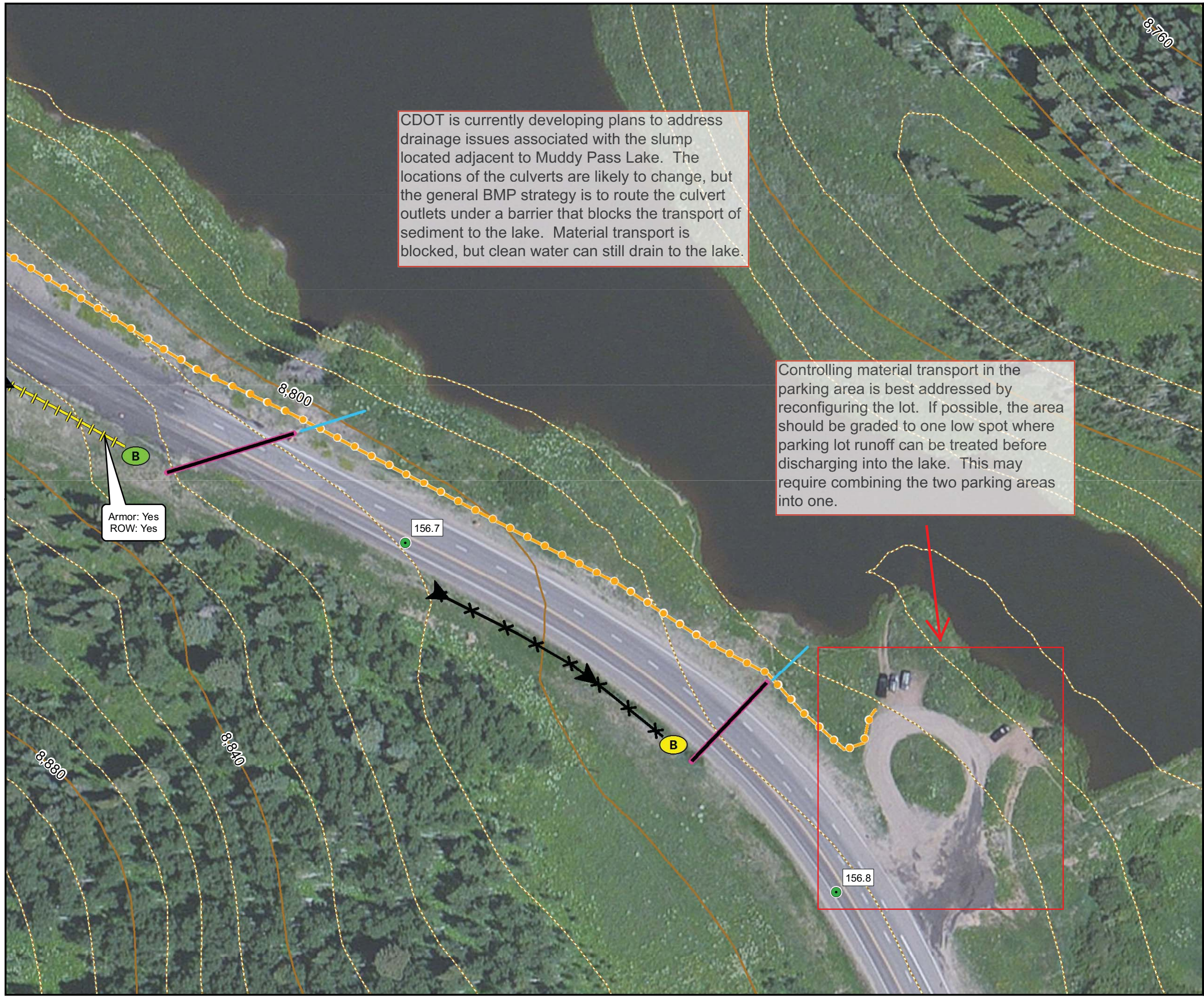
**Sediment Basins**

Map Date: 7/2013  
 Data Source: CDOT,  
 Routt County, Bing Imagery



1:1,000 Scale





CDOT is currently developing plans to address drainage issues associated with the slump located adjacent to Muddy Pass Lake. The locations of the culverts are likely to change, but the general BMP strategy is to route the culvert outlets under a barrier that blocks the transport of sediment to the lake. Material transport is blocked, but clean water can still drain to the lake.

Controlling material transport in the parking area is best addressed by reconfiguring the lot. If possible, the area should be graded to one low spot where parking lot runoff can be treated before discharging into the lake. This may require combining the two parking areas into one.

Armor: Yes  
ROW: Yes

**Legend**

- Mileposts
- Milepost Segments
- - - 10ft Contours
- - - Access Road
- 40ft Contours
- Pavestone

**Preventative BMPs**

- Clean Water Diversions
- ▨ Limit Traction Material
- ▨ Revegetation Zone

**Collection BMPs**

- Barriers
- Berm
- Culverts
- Geo-Textile Tubes
- Pan Drain
- Rundown
- Kneewall & French Drain
- ▨ Snow Storage
- ✂ Drain
- ▨ Large
- ▨ Medium
- ▨ Small

**Ditch Types**

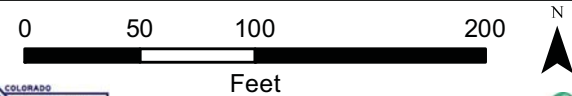
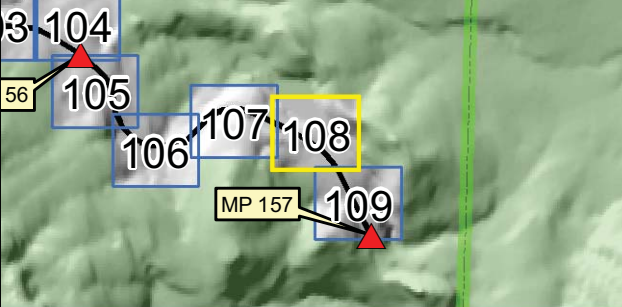
**Treatment BMPs**

- ▨ Bench Trap
- ▨ Loading Dock Trap
- Sand Cans
- Large
- Medium
- Small

**Sediment Basins**

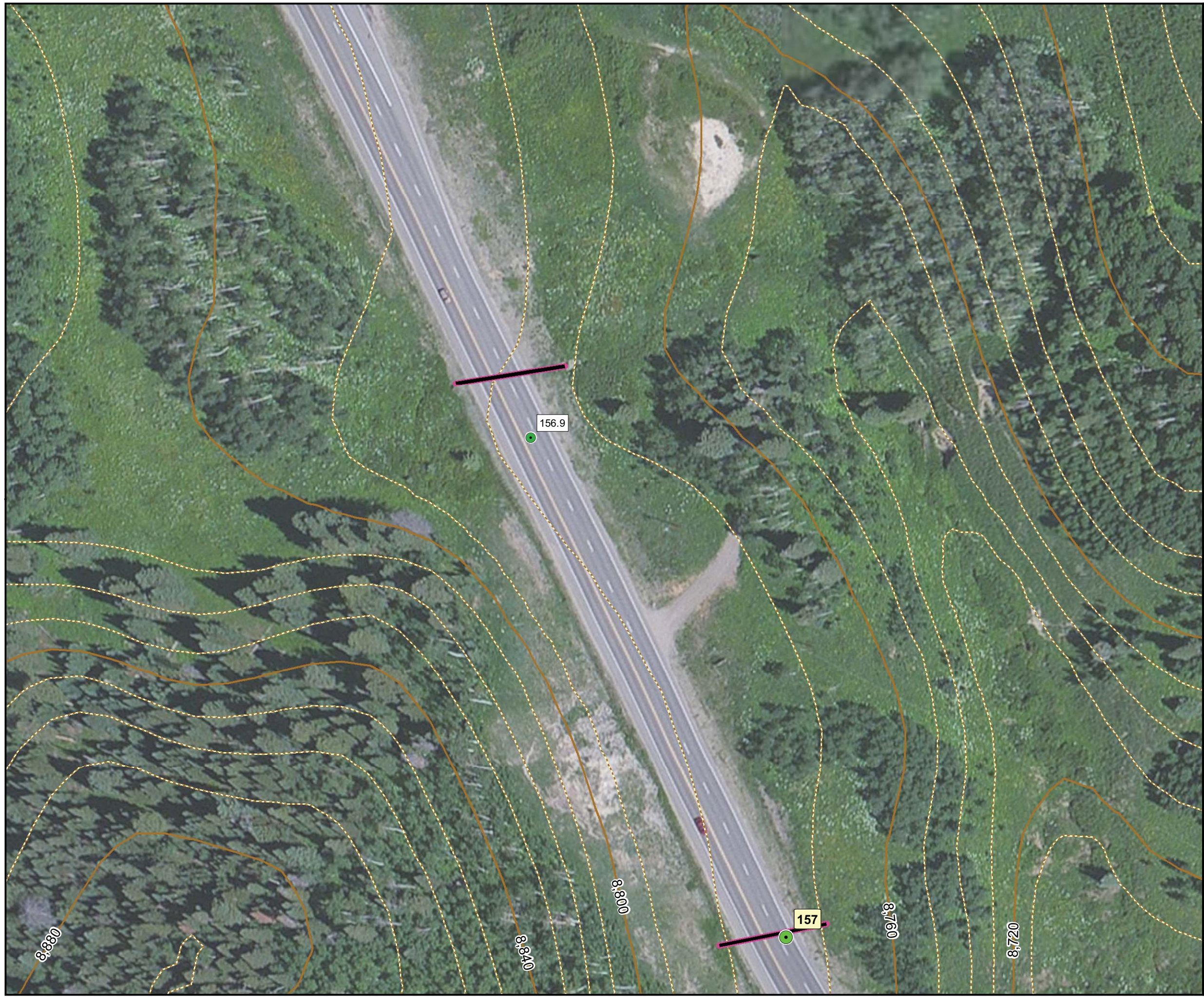
Map Date: 7/2013  
Data Source: CDOT, Routt County, Bing Imagery

**Index Inset**



1:1,000 Scale





**Legend**

- Mileposts
- Milepost Segments
- 10ft Contours
- Access Road
- 40ft Contours
- Pavestone

**Preventative BMPs**

- Clean Water Diversions
- Limit Traction Material
- Revegetation Zone

**Collection BMPs**

- Barriers
- Berm
- Culverts
- Geo-Textile Tubes
- Pan Drain
- Rundown
- Kneewall & French Drain
- Snow Storage
- ✕ Drain
- Large
- Medium
- Small

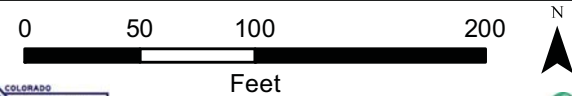
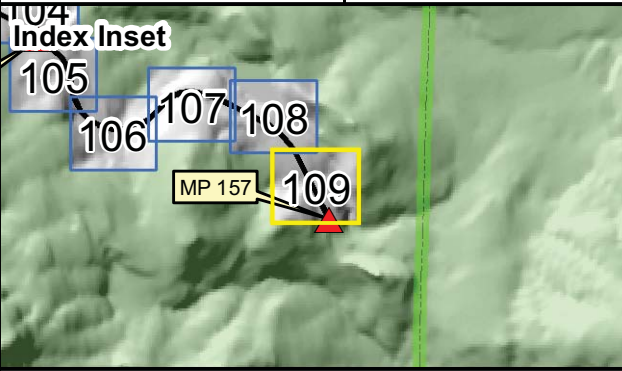
**Ditch Types**

**Treatment BMPs**

- Bench Trap
- Loading Dock Trap
- Sand Cans
- Large
- Medium
- Small

**Sediment Basins**

Map Date: 7/2013  
 Data Source: CDOT,  
 Routt County, Bing Imagery



1:1,000 Scale

