

FED. ROAD DIST. NO.	STATE	PROJ. NO.	SHEET NO.	TOTAL SHEETS
3	COLO.	144-F	1	1

# COLORADO

## STATE HIGHWAY DEPARTMENT

### PLAN AND PROFILE OF PROPOSED FEDERAL AID PROJECT NO. 144-F STATE HIGHWAY NO. 14 AND 123

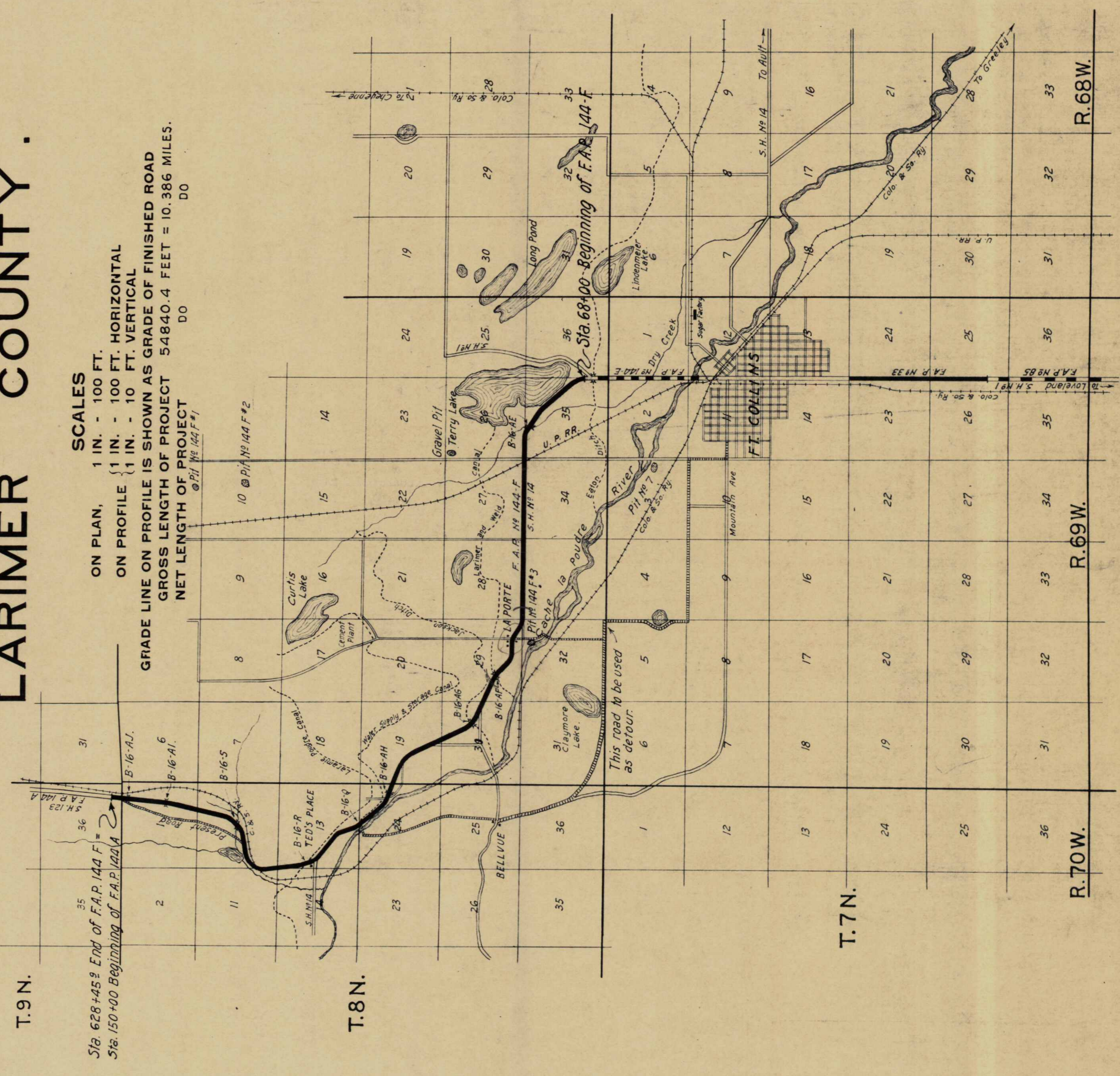
### LARIMER COUNTY.

#### INDEX OF SHEETS

1. Title Sheet and Sketch Map.
2. Typical Cross Section of Improvement and Summary of Quantities.
- 3-4. List of Structures.
- 5-9. Bridge Details.
10. Concrete Box Culvert, Sta. 155+34
11. Standard Concrete Box Culverts, M-103-C
12. Standard C.M.P. Culvert Headwalls, M-102-D
13. Standard Guard Fence, M-20-D
14. Standard Barbed Wire Fence and Markers, M-24-D
- 15-33 Plan and Profile Sheets.
- 34-97 Cross Section Sheets.

#### CONVENTIONAL SIGNS

- Center Line of Improvement
- Section Line
- 1/4 Section Line
- Right of Way Line
- Gate Required
- Gate in Place
- Fence
- Railroad Track
- Telephone Poles
- Power Line Poles



Scale 1" = 1 Mile.

RECOMMENDED FOR APPROVAL  
*William E. ...*  
 ASSISTANT ENGINEER

APPROVED  
*...*  
 STATE HIGHWAY ENGINEER

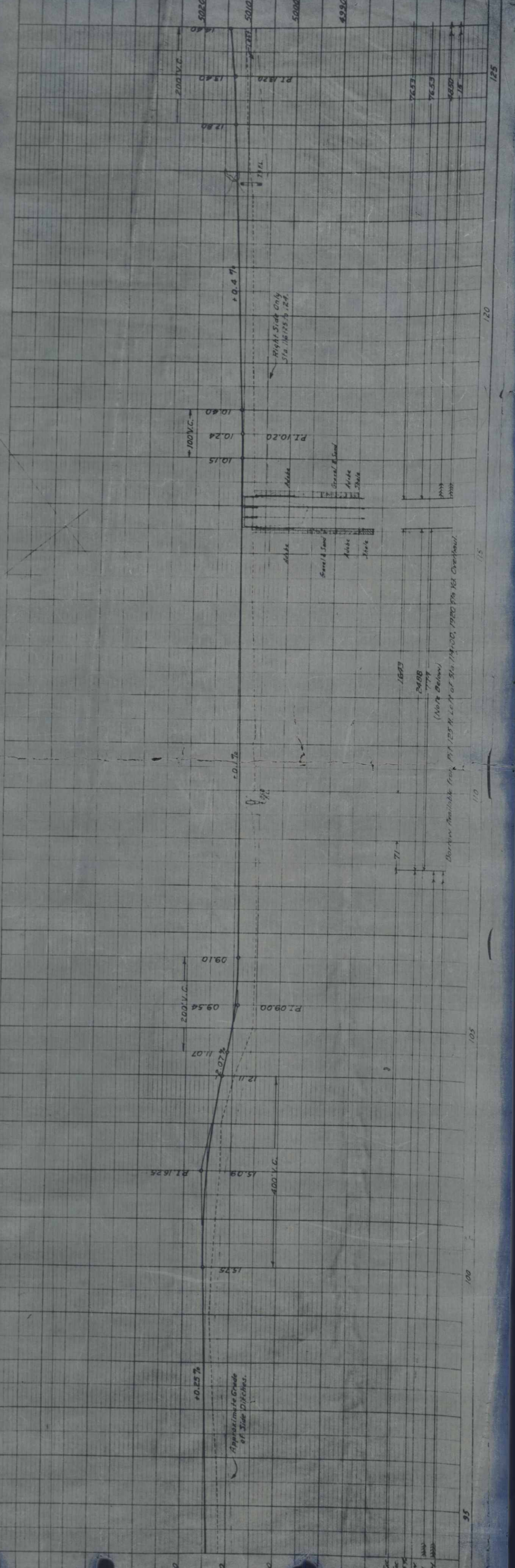
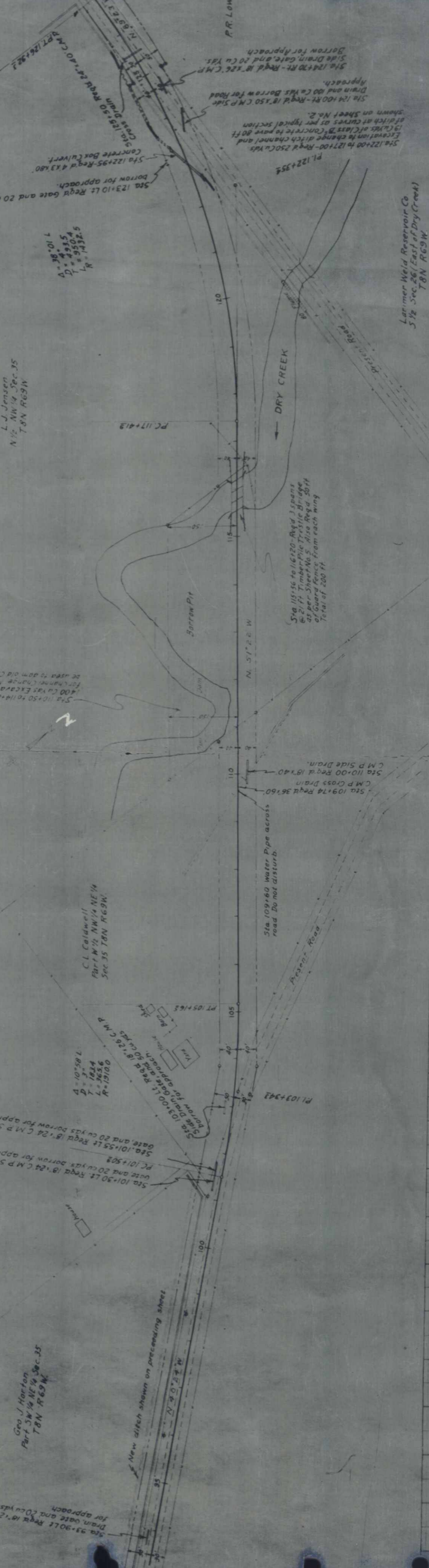
RECOMMENDED FOR APPROVAL  
 DIST. ENG. BUREAU PUBLIC ROADS

RECOMMENDED FOR APPROVAL  
 CHIEF ENG. BUREAU PUBLIC ROADS

APPROVED  
 DIRECTOR BUREAU PUBLIC ROADS



FILE NO.	DATE	BY	REVISION
144-F	16		



L. J. Jensen  
1/2 NW 1/4 Sec. 35  
T8N R69W

Larimer Weld Reservoir Co  
1/2 Sec. 26 (East of Dry Creek)  
T8N R69W

Geo. J. Horton  
Part SW 1/4 NE 1/4 Sec. 35  
T8N R69W

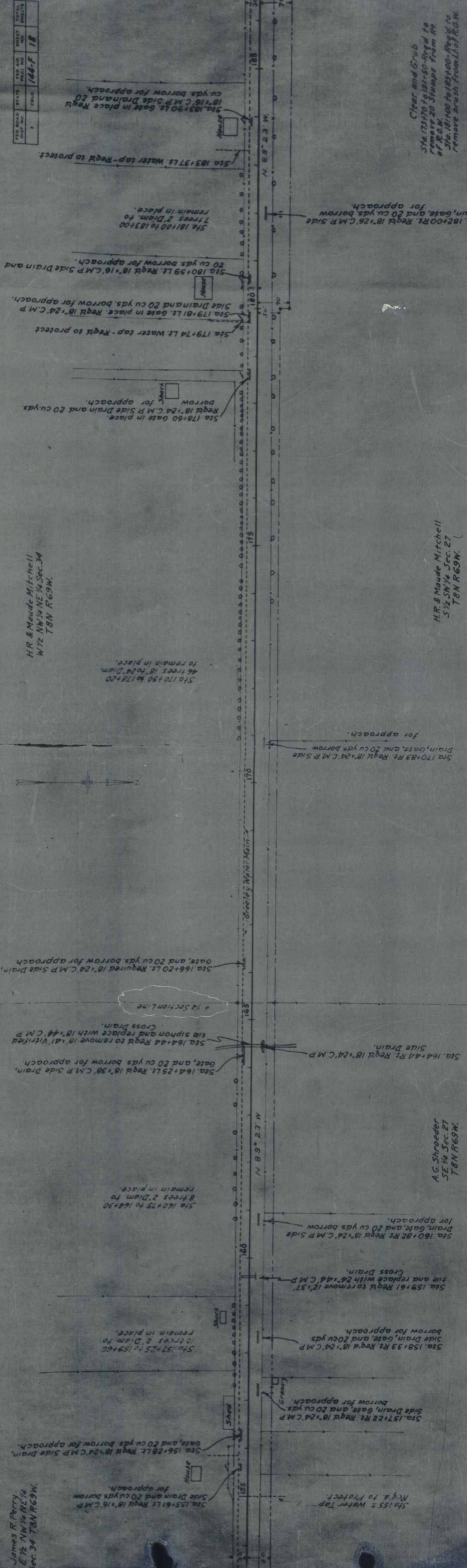
C.L. Caldwell  
Part NW 1/4 NE 1/4  
Sec. 35 T8N R69W

$A = 39.10^\circ L$   
 $D = 23.5$   
 $T = 93.04$   
 $L = 1432.5$

Geo. E. Co.  
Arch. Co.  
Feb. 1916  
S. P. O. N.  
L. M. G. L.



STATE	NO. AND DATE OF REVISION	DATE	BY
INDIANA	144-F	18	



James R. Parry  
E 1/2 NW 1/4 NE 1/4  
Sec. 34 T8N R69W.

Sta. 160+75 to 164+30  
8 trees 2' diam to  
remain in place.

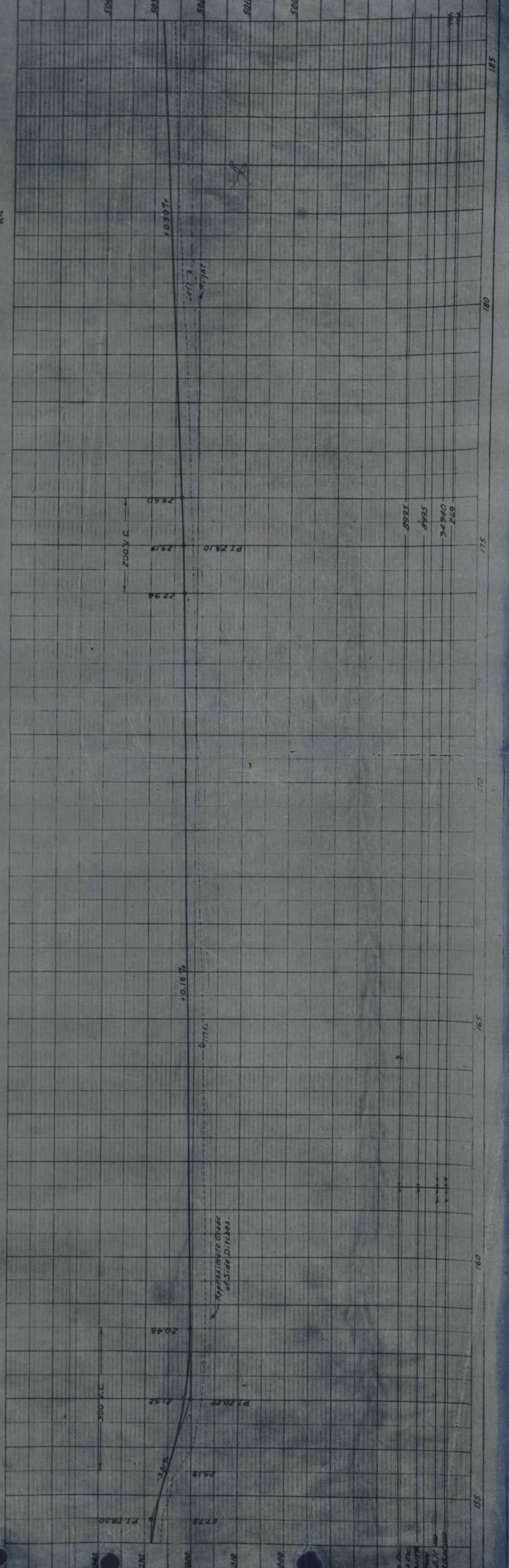
Sta. 170+90 to 178+20  
46 trees 18' to 24' diam  
to remain in place.

H.R. & Maude Mitchell  
W 1/2 NW 1/4 NE 1/4 Sec. 34  
T8N R69W.

H.R. & Maude Mitchell  
S 1/2 SW 1/4 Sec. 27  
T8N R69W.

A.C. Schroeder  
S E 1/4 Sec. 27  
T8N R69W.

Clear and Grub  
Sta. 173+70 to 181+50 Reg'd to  
remove 20 Stumps from RR  
of R.O.W.  
Sta. 181+00 to 183+00 - Reg'd to  
remove brush from L.O.F. R.O.W.



Checked by  
Drawn by  
Plotted by  
S.T.O.H. 1918

PROFILE	SURVEYED	BY	DATE
	PLOTTED		
NOTE BOOK	GRADES CHECKED		
NO.	B. M.S. NOTED		
	STRUCTURE NOTATIONS CH'KD.		

PLAN	SURVEYED	BY	DATE
	PLOTTED		
NOTE BOOK	ALIGNMENT CHECKED		
NO.	RT. OF WAY CHECKED		

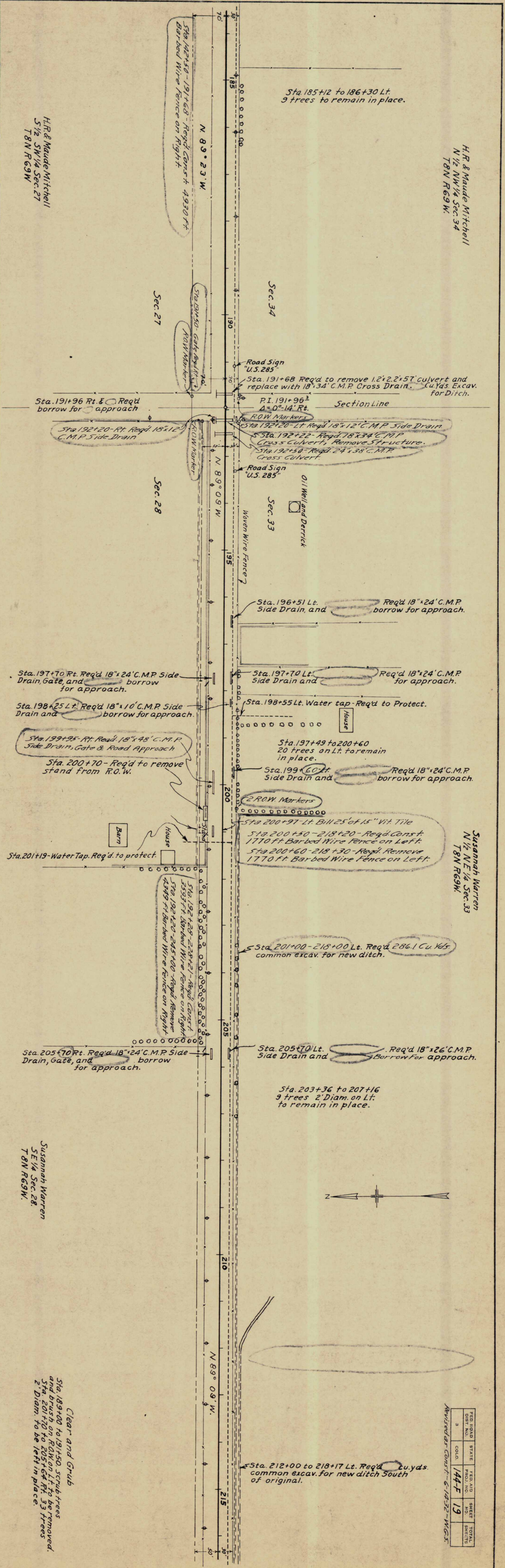
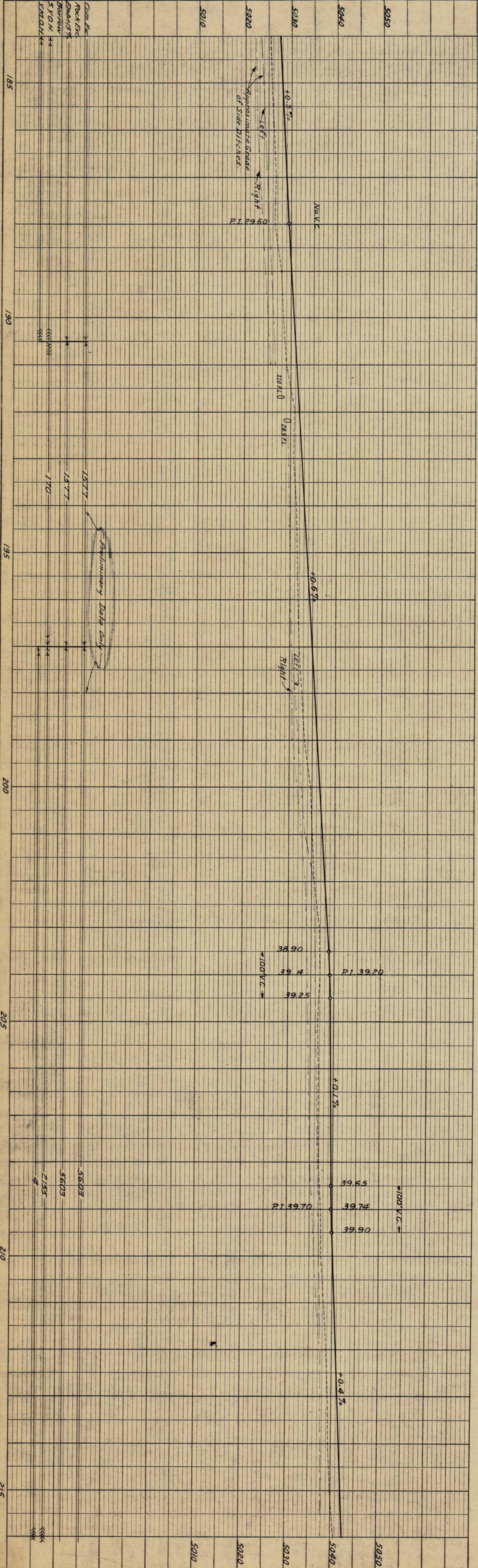


PLATE 1 - PLAN - PROFILE - O. P. R. & R. C. STANFORD  
 REUTHEL & SASSER CO., NEW YORK

H. R. & Maude Mitchell  
 N 1/2 NW 1/4 Sec. 34  
 T 8N R 69W

Susannah Warren  
 N 1/2 NE 1/4 Sec. 33  
 T 8N R 69W

H. R. & Maude Mitchell  
 SE 1/4 Sec. 27  
 T 8N R 69W

Susannah Warren  
 SE 1/4 Sec. 28  
 T 8N R 69W

Clear and grub  
 Sta. 189+00 to 191+50 scrub trees  
 and brush on ROW on Lt. to be removed.  
 Sta. 201+10 to 205+64 Rt. 33 trees  
 2" Diam. to be left in place.

FED. ROAD DIST. NO.	STATE	FED. AID PROJ. NO.	SHEET NO.	TOTAL SHEETS
3	COLO.	144-F	19	

Revised as Cont. 6-18-32 - W.G.S.

PROFILE	SURVEYED	BY	DATE
	PLOTTED		
NOTE BOOK NO.	GRADES CHECKED		
	R. M. S. NOTED		
	STRUCTURE NOTAT NS CHKD.		

PLAN	SURVEYED	BY	DATE
	PLOTTED		
NOTE BOOK NO.	ALIGNMENT CHECKED		
	RT. OF WAY CHECKED		

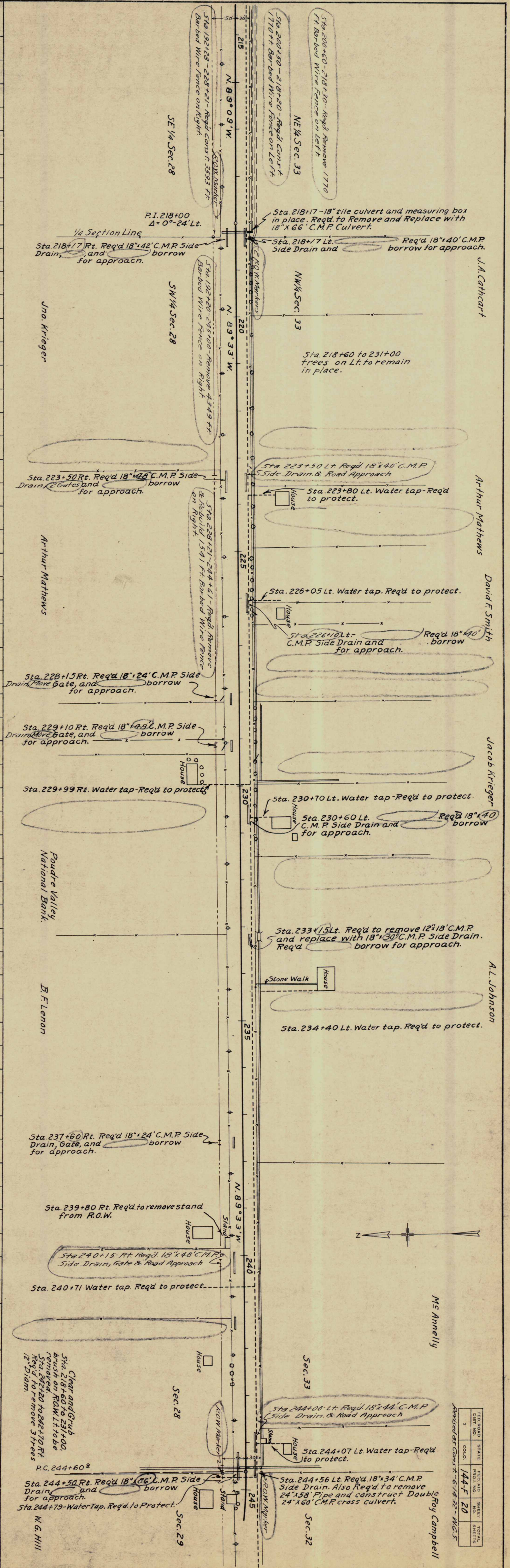
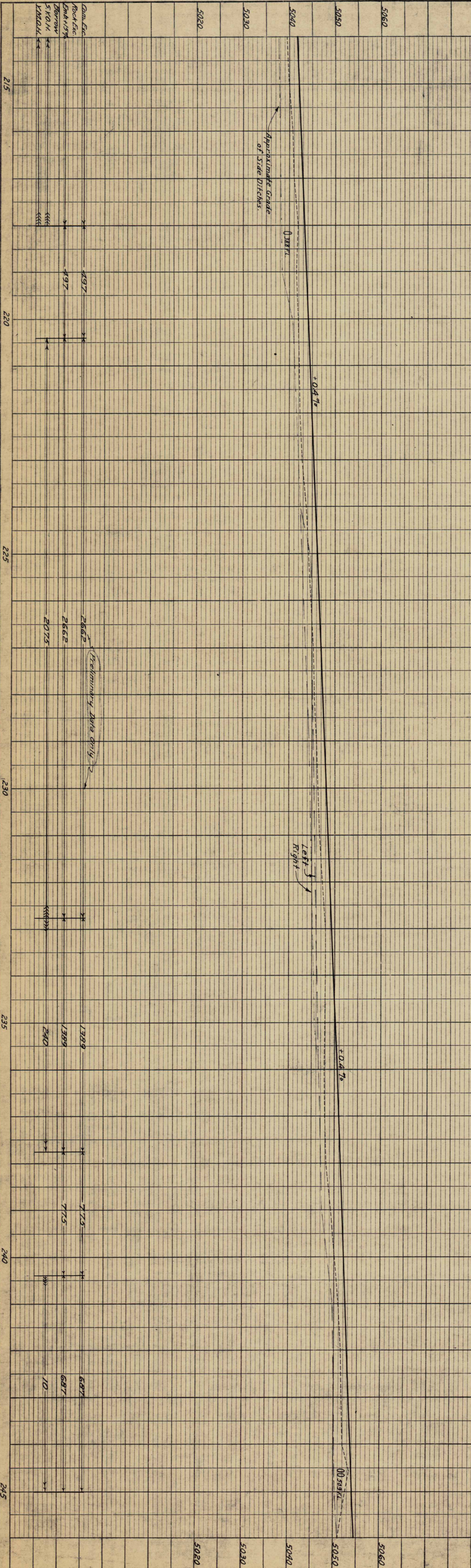
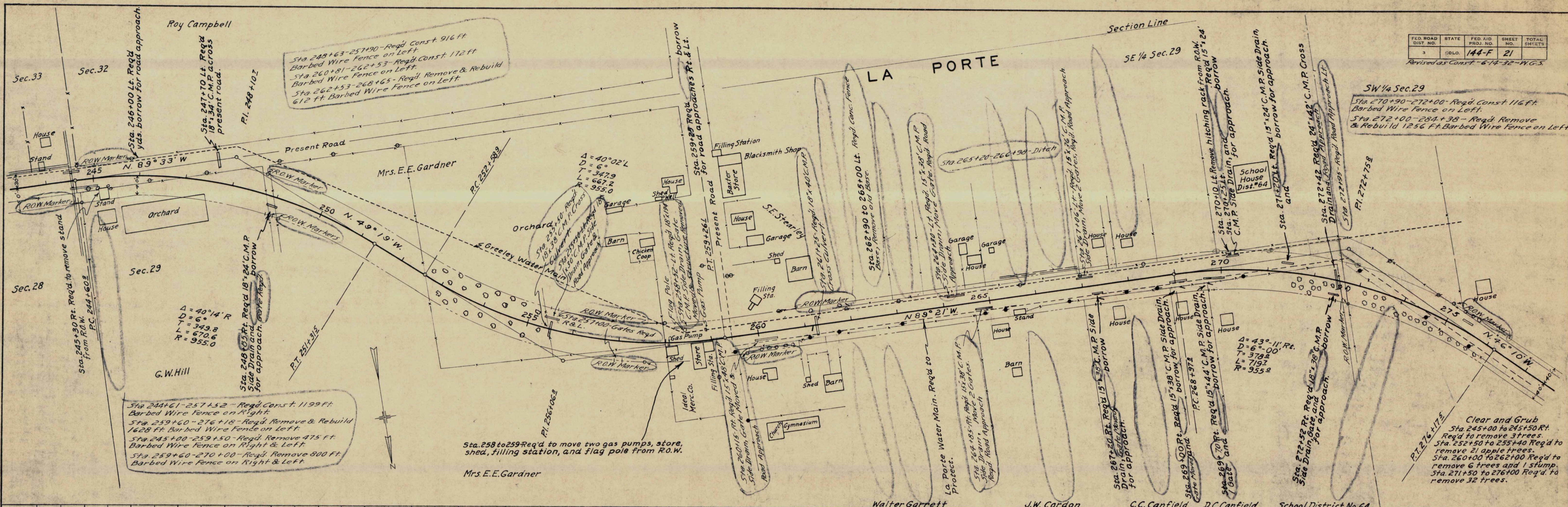


PLATE 1 - PLAN - PROFILE OF R.O.W. & R.E. ELEVATIONS  
 KEARNEY & SONS CO. NEW YORK

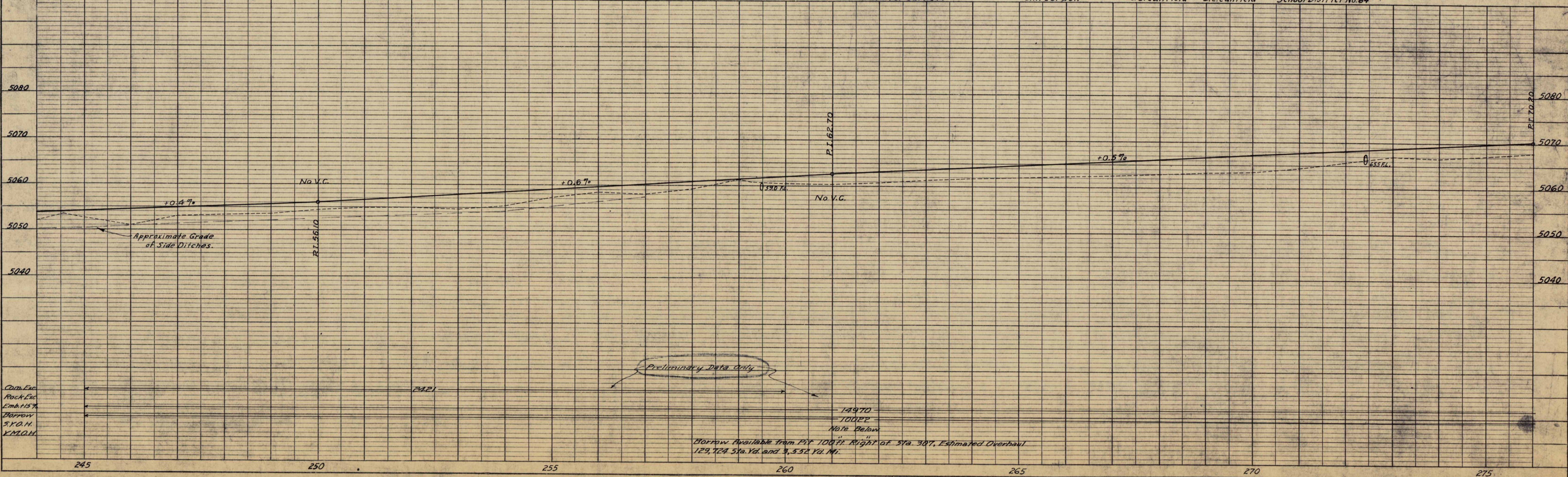
SECTION	STATE	PROJ. NO.	SHEET	TOTALS
3	COLO.	144-F	20	

Reviewed as Cont. F. 6-14-22 - W.G.S.

DATE	BY
SURVEYED	
PLOTTED	
NOTE BOOK ALIGNMENT CHECKED	
NOTE BOOK GRADES CHECKED	
B. M. & M. NOTED	
STRUCTURE NOTATIONS CHECKED	
NO.	



DATE	BY
SURVEYED	
PLOTTED	
NOTE BOOK GRADES CHECKED	
B. M. & M. NOTED	
STRUCTURE NOTATIONS CHECKED	
NO.	



PROFILE	SURVEYED	BY	DATE
NOTE BOOK	PLOTTED		
NO.	GRADES CHECKED		
	B. M. S. NOTED		
	STRUCTURE NOTATIONS CH'KD.		

PLAN	SURVEYED	BY	DATE
NOTE BOOK	PLOTTED		
NO.	ALIGNMENT CHECKED		
	RT. OF WAY CHECKED		

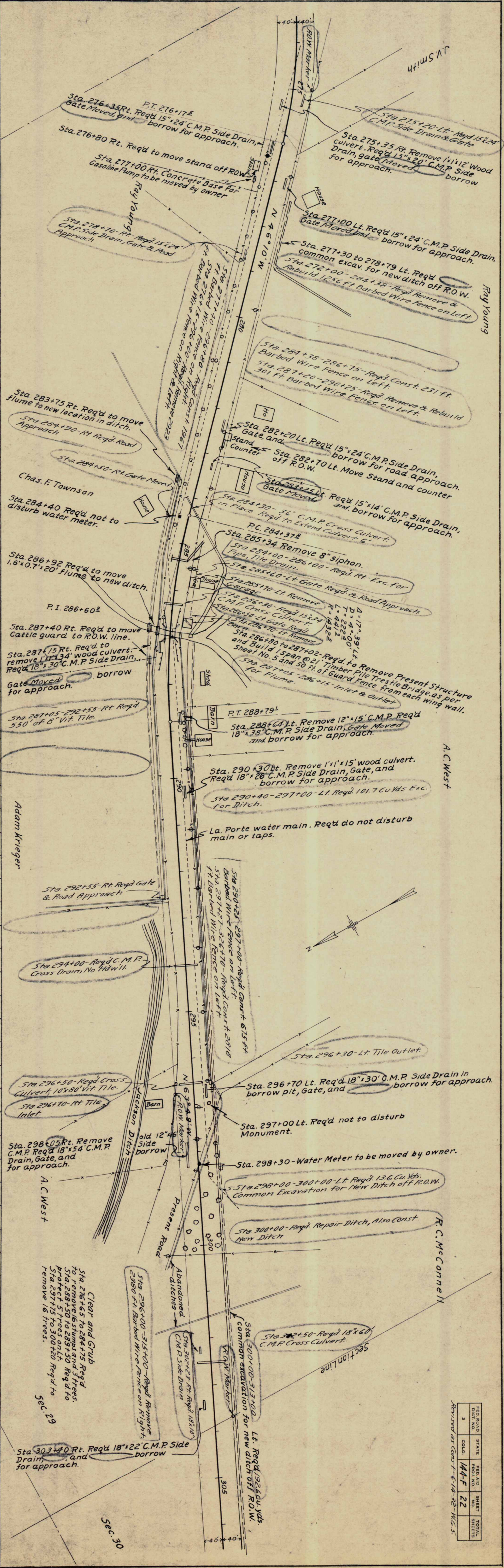
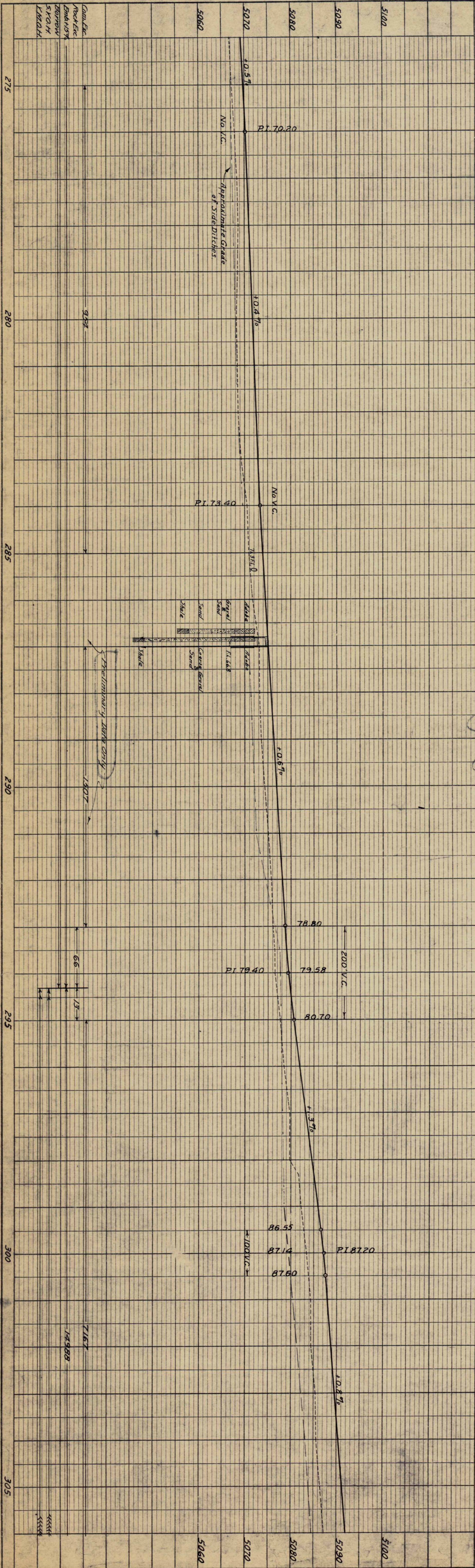


PLATE 1 - PLAN PROFILE OF P. A. & E. STIMMONS  
KENTON, KENTON & CO. NEW YORK

FEED NO.	STATE	PROJ. NO.	SHEET NO.	TOTAL SHEETS
3	COLO.	144-F	22	

PROFILE	SURVEYED	BY	DATE
	PLOTTED		
NOTE BOOK	GRADES CHECKED		
NO.	B. & S. NOTED		
	STRUCTURE NOTATIONS CH'KD.		

PLAN	SURVEYED	BY	DATE
	PLOTTED		
NOTE BOOK	ALIGNMENT CHECKED		
NO.	RT. OF WAY CHECKED		

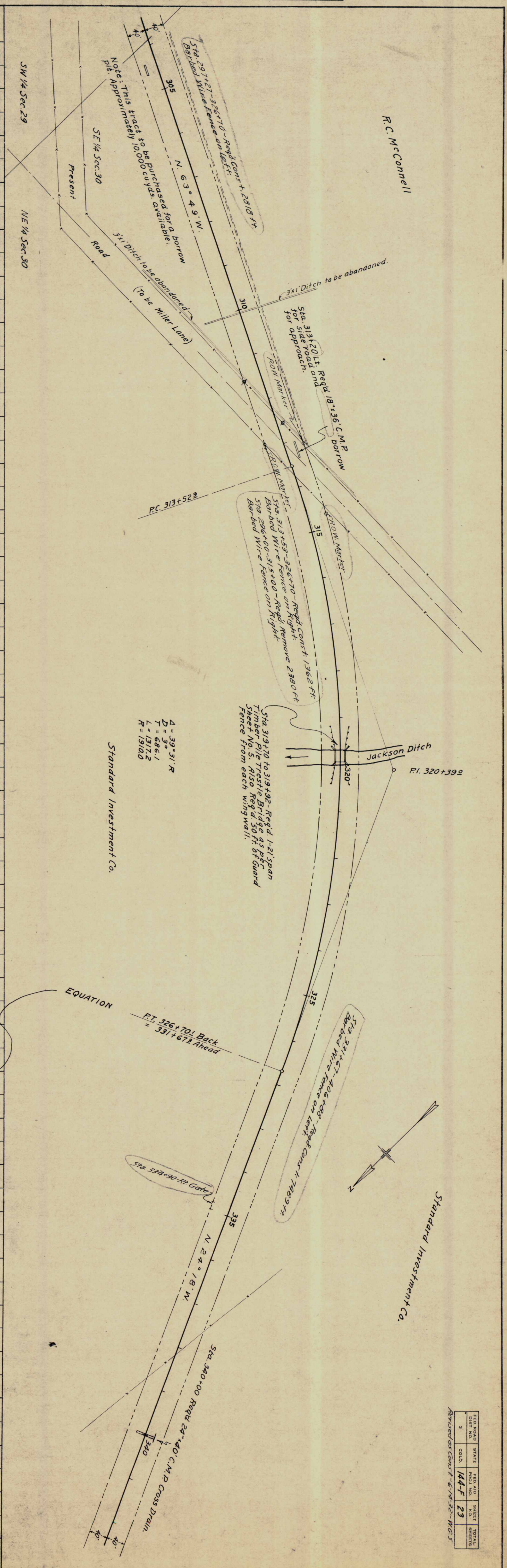
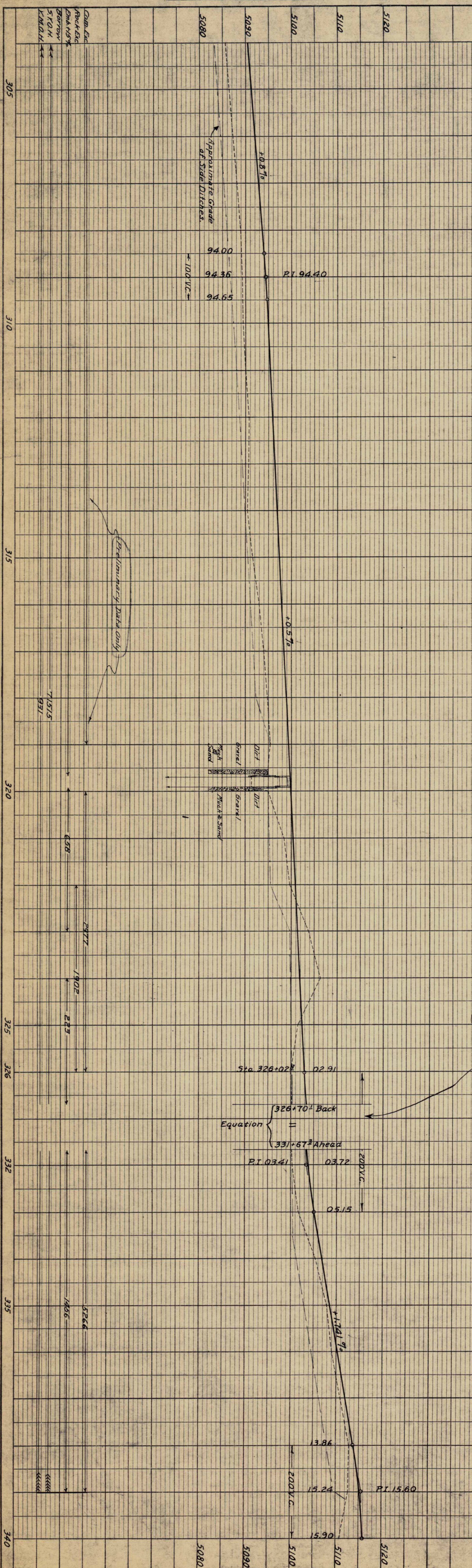


PLATE 1 - PLAN-PROFILE OF P. & R. E. STANBROOK  
 NEWYORK & ESSEX CO., NEW YORK.

FILE NO.	STATE	PROJECT NO.	SHEET NO.	TOTAL SHEETS
3	COLO.	144-F	23	23

Revised as Cont'd - 6/18/32 - W.G.S.

PROFILE	SURVEYED	BY	DATE
NOTE BOOK NO.	PLOTTED		
	GRADES CHECKED		
	B. M.'S NOTED		
	STRUCTURE NOTATIONS CHECKED		

PLAN	SURVEYED	BY	DATE
NOTE BOOK NO.	PLOTTED		
	ALIGNMENT CHECKED		
	RT. OF WAY CHECKED		

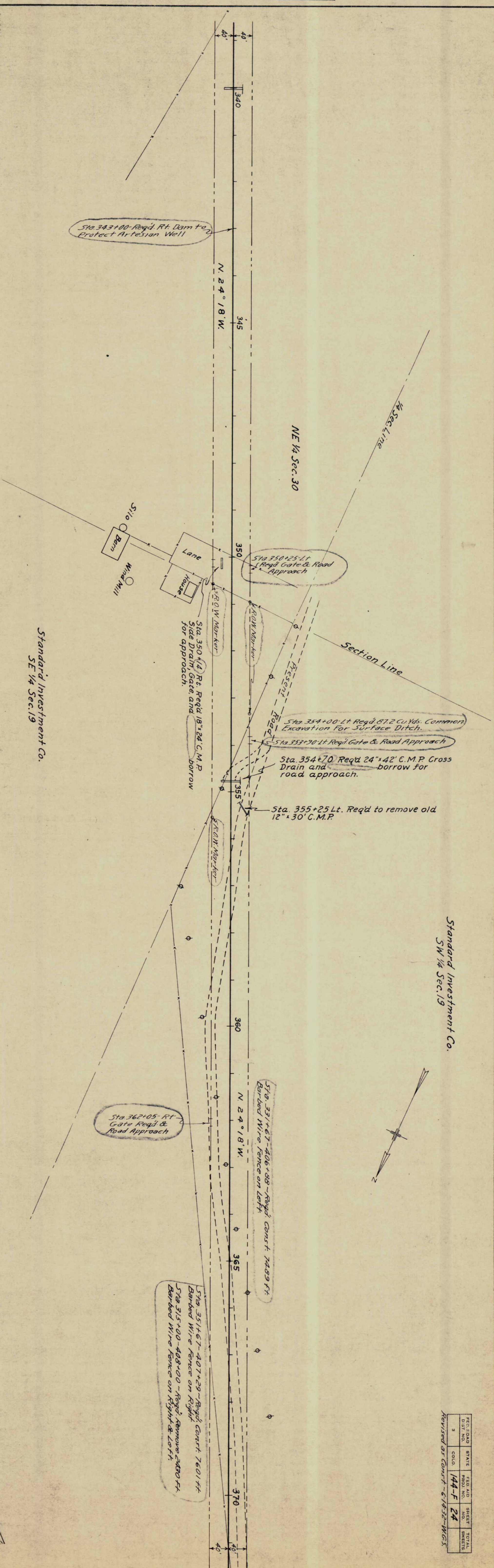
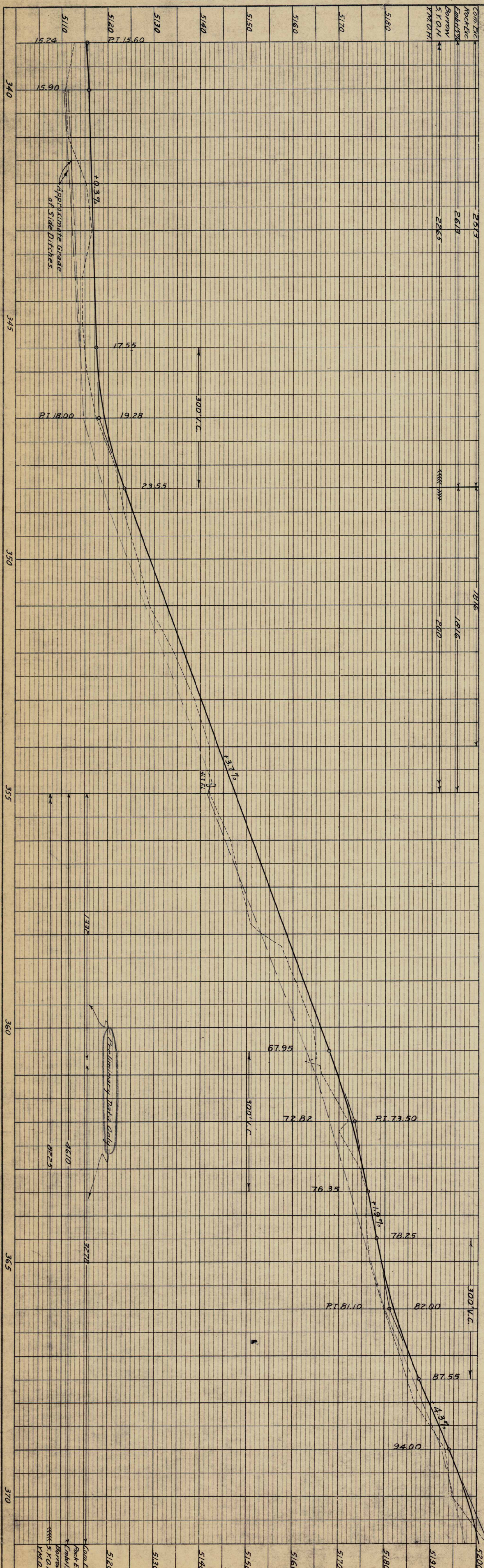


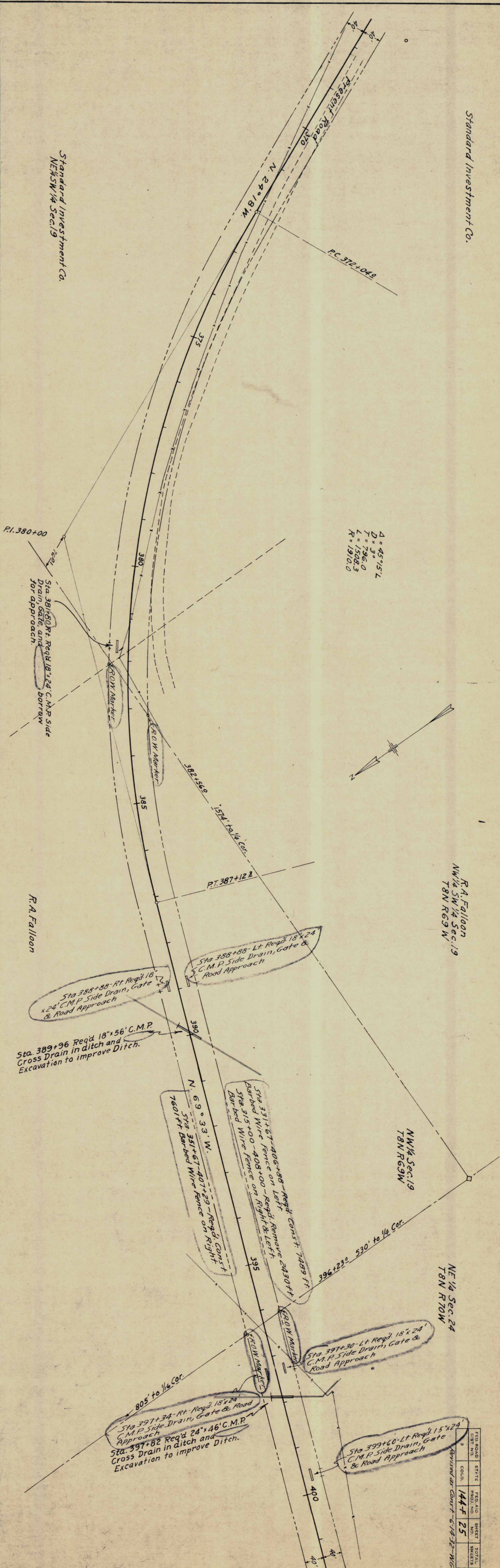
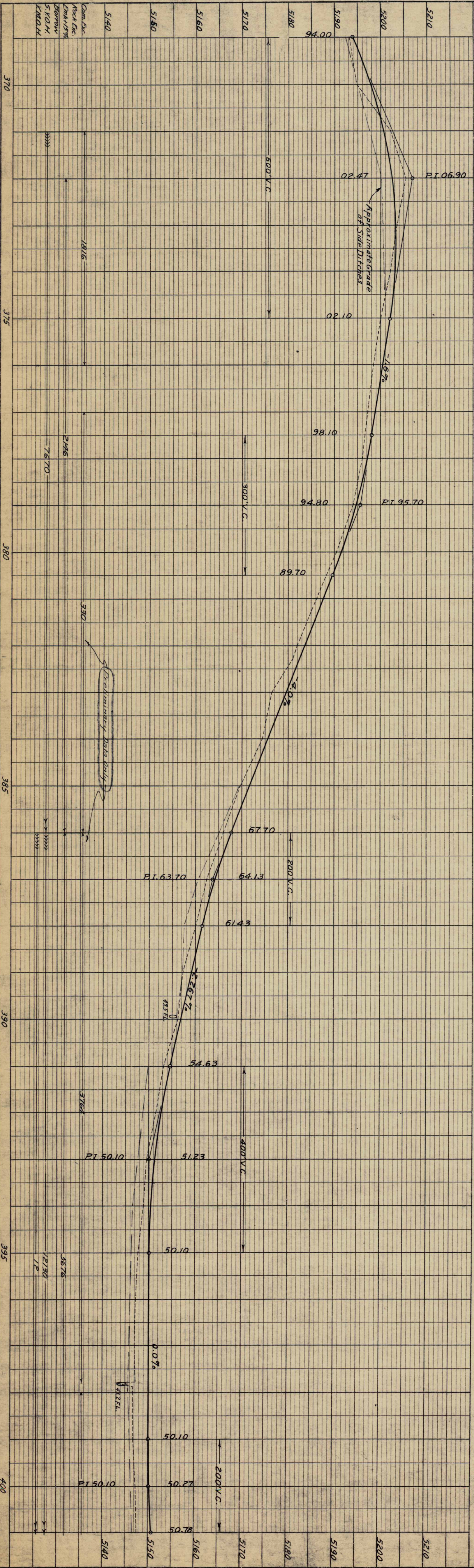
PLATE 1 - PLAN - PROFILE OF R.R. & E. STANDARD INVESTMENT CO. NEW YORK.

Standard Investment Co.  
SW 1/4 Sec. 19.

PROJECT NO.	STATE	SECTION NO.	SHEET NO.	TOTAL SHEETS
3	144-F	24		
DATE	1925	REVISED BY	CONTR.	W.G.S.

PROFILE	SURVEYED	BY	DATE
	PLOTTED		
NOTE BOOK	GRADES CHECKED		
NO.	B. M.S. NOTED		
	STRUCTURE NOTATIONS CHECKED		

PLAN	SURVEYED	BY	DATE
	PLOTTED		
NOTE BOOK	ALIGNMENT CHECKED		
NO.	RT. OF WAY CHECKED		



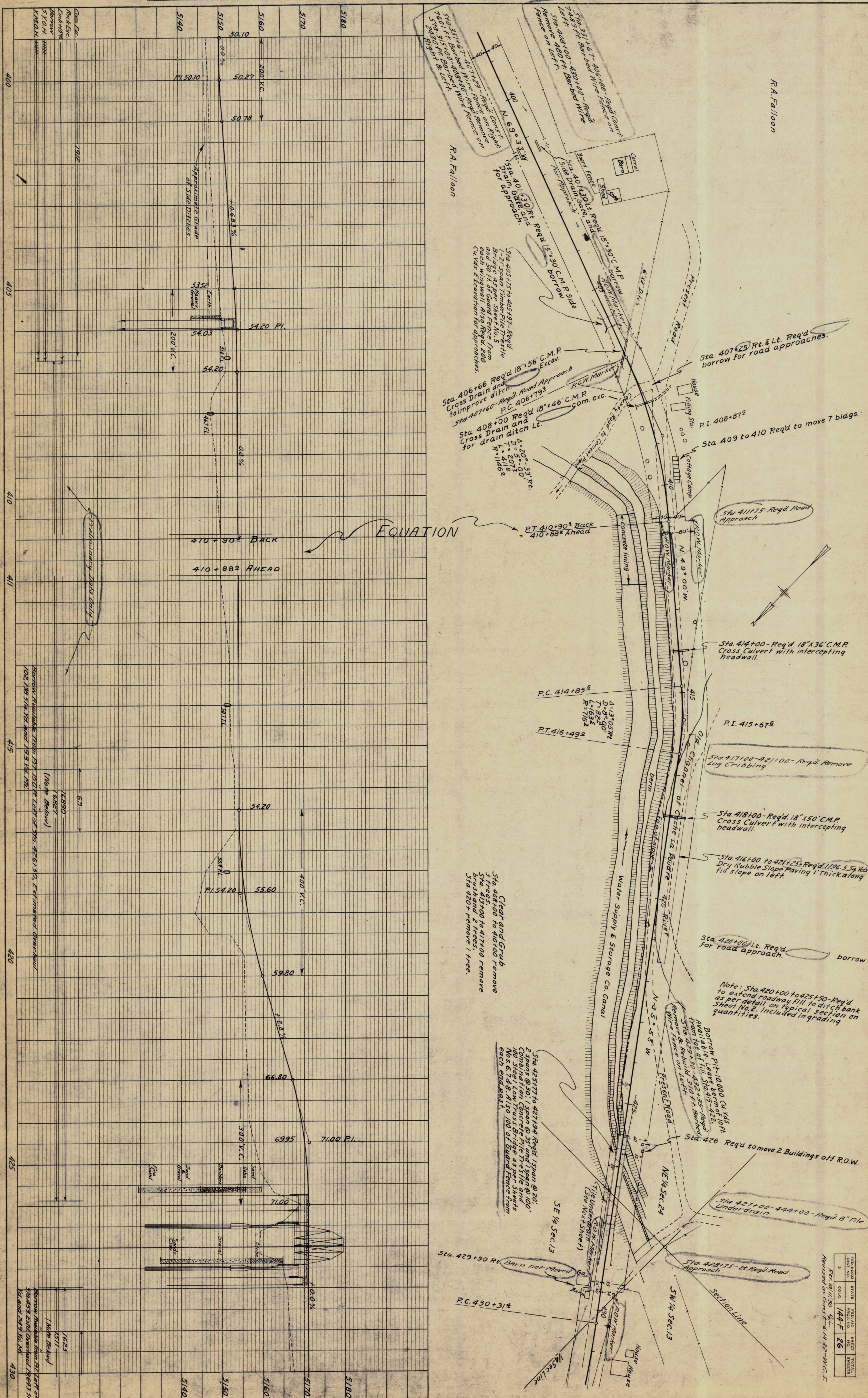
$\Delta = 45^\circ 15' L$   
 $D = 3'$   
 $T = 796.0$   
 $L = 1508.3$   
 $R = 1910.0$

PLATE 1 - PLAN PROFILE & P. & E. STANDARD INVESTMENT CO. & R.A. FALLON  
 DRAWN BY: J. B. BROWN, JR.

FILE NO.	DATE	BY	NO.	SHEET	TOTAL
144-F-25				25	25

PROFILE	SURVEYED	BY	DATE
NOTE BOOK	PLOTTED		
NO.	GRADES CHECKED		
	& M.S. NOTED		
	STRUCTURE NOTATIONS CHKD.		

PLAN	SURVEYED	BY	DATE
NOTE BOOK	PLOTTED		
NO.	ALIGNMENT CHECKED		
	RT. OF WAY CHECKED		



EQUATION

410+90<sup>2</sup> BACK  
410+88<sup>2</sup> AHEAD

Note: Sta. 420+00 to 425+50-Req'd to extend roadway fill to ditch bank as per detail on typical section on sheet No. 2. Included in grading quantities.

Borrow Pit-10,000 cu yds. available. Leave berm at Sta. 415+42.5. from Sta. 415+30-432+55-Req'd. Remove & Rebuild 5 ft. wire fence on left.

Clear and Grub  
Sta. 418+00 to 417+00 remove brush and 2 trees.  
Sta. 420+00 remove 1 tree.

FIELD NO.	STATE	FEED NO.	SHEET	TOTAL
144-F		26		

Rev. 10/11/30  
Revised as const. 4-14-32-W.G.S.

PROFILE	SURVEYED	BY	DATE
NOTE BOOK NO.	GRADES CHECKED		
	B.M.S. NOTED		
	STRUCTURE NOTATIONS CHECKED		

PLAN	SURVEYED	BY	DATE
NOTE BOOK NO.	ALIGNMENT CHECKED		
	RT. OF WAY CHECKED		

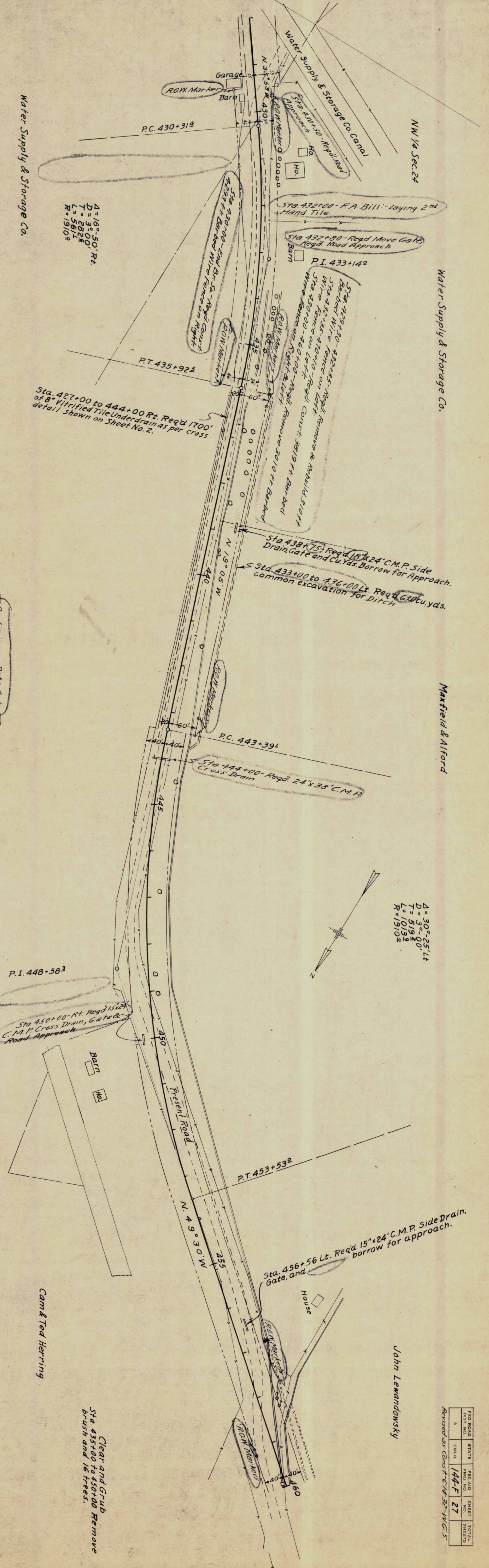
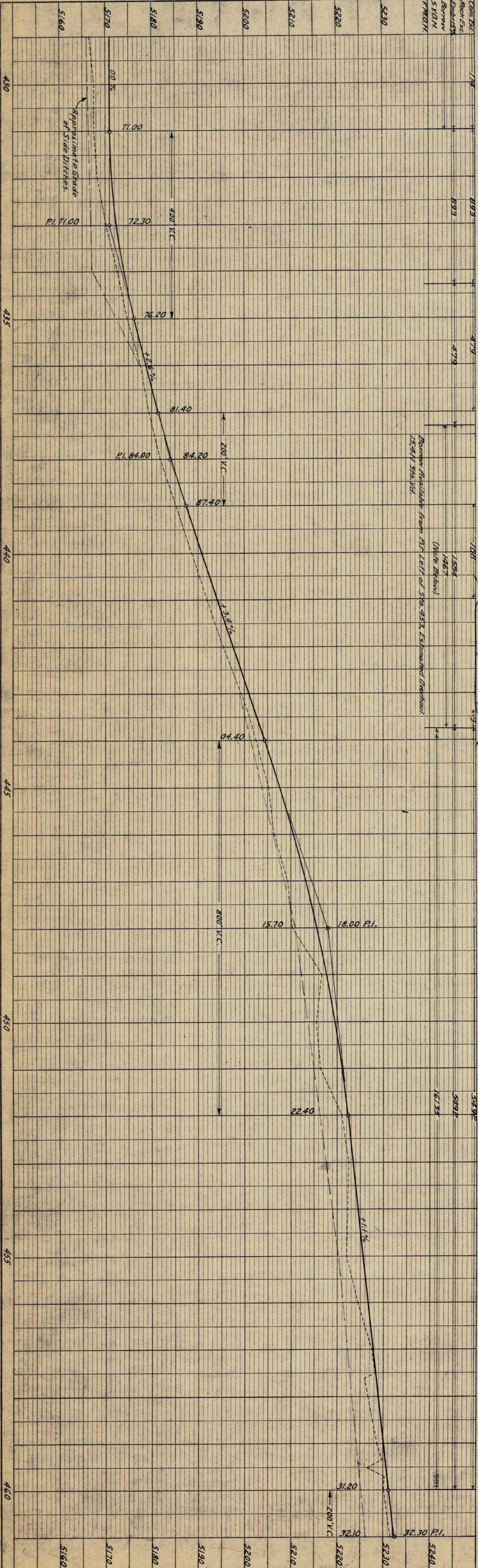


PLATE 1 - PLAN, PROFILE OF R. N. S. S. STATION

TOWN	STATE	PROJ. NO.	SHEET	TOTAL
3	IND.	144-F	27	

Revised as Cont'd 6-18-52 H.C.S.

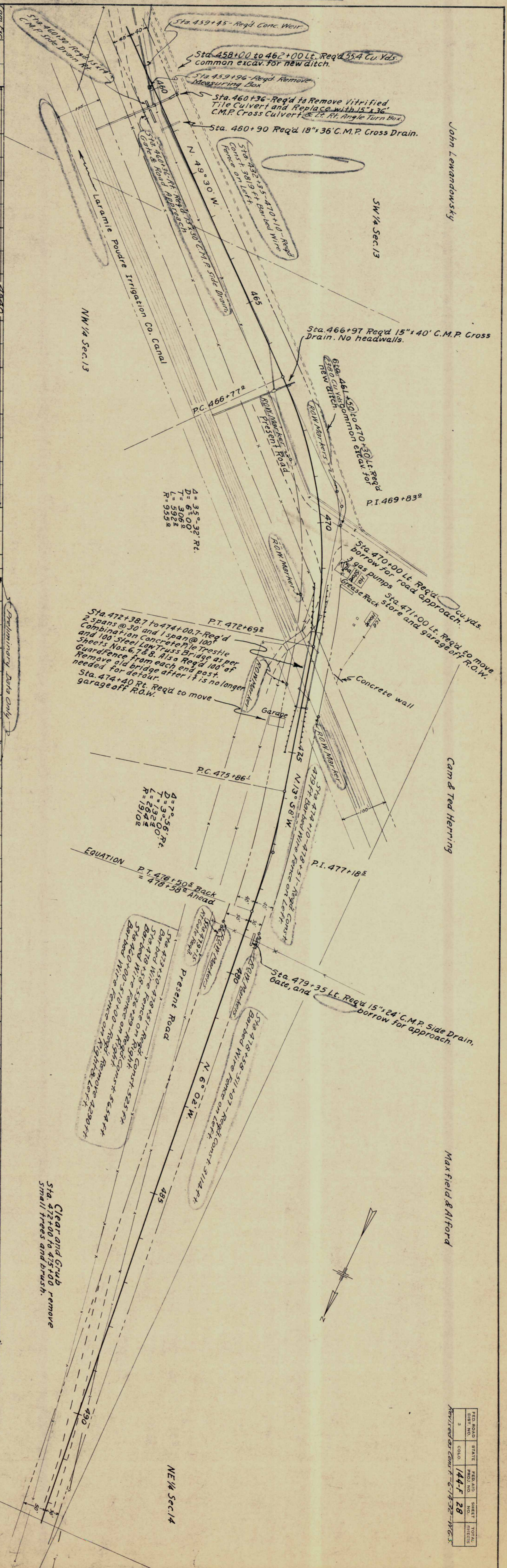
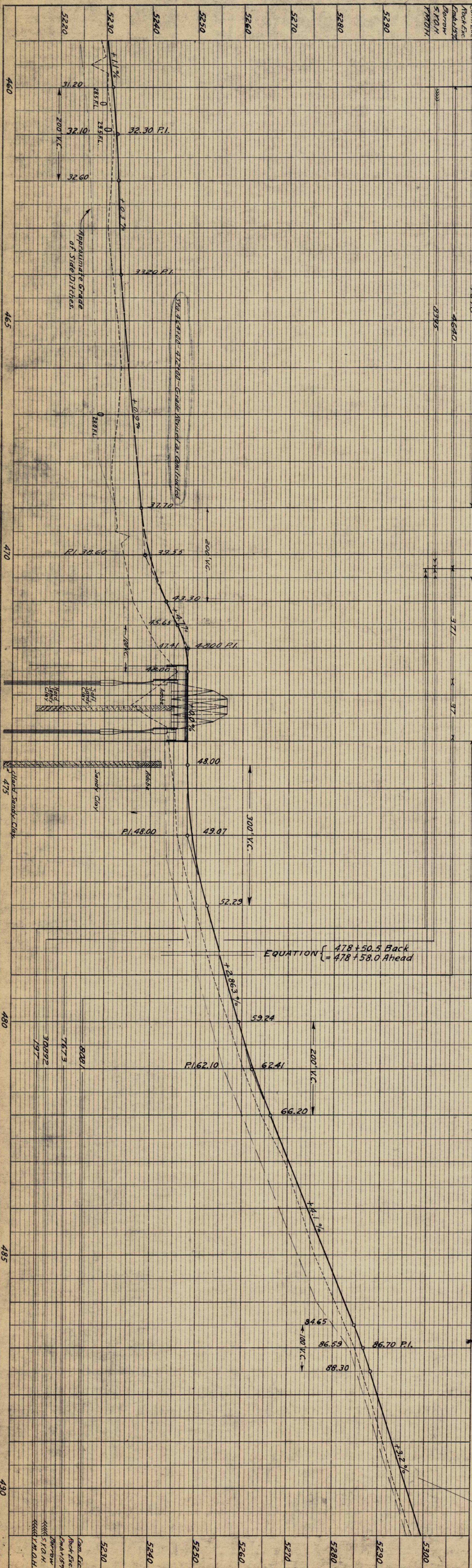
John Lemandowsky

Cam & Ted Herring

Clear and Grub Remove Sta. 435+00 to 450+00 brush and 16 trees.

PROFILE	SURVEYED	BY	DATE
	PLOTTED		
NOTE BOOK	GRADES CHECKED		
NO.	B. M. & NOTED		
	STRUCTURE NOTATIONS CH'KD.		

PLAN	SURVEYED	BY	DATE
	PLOTTED		
NOTE BOOK	ALIGNMENT CHECKED		
NO.	RT. OF WAY CHECKED		



John Lemandowsky

Cam & Ted Herring

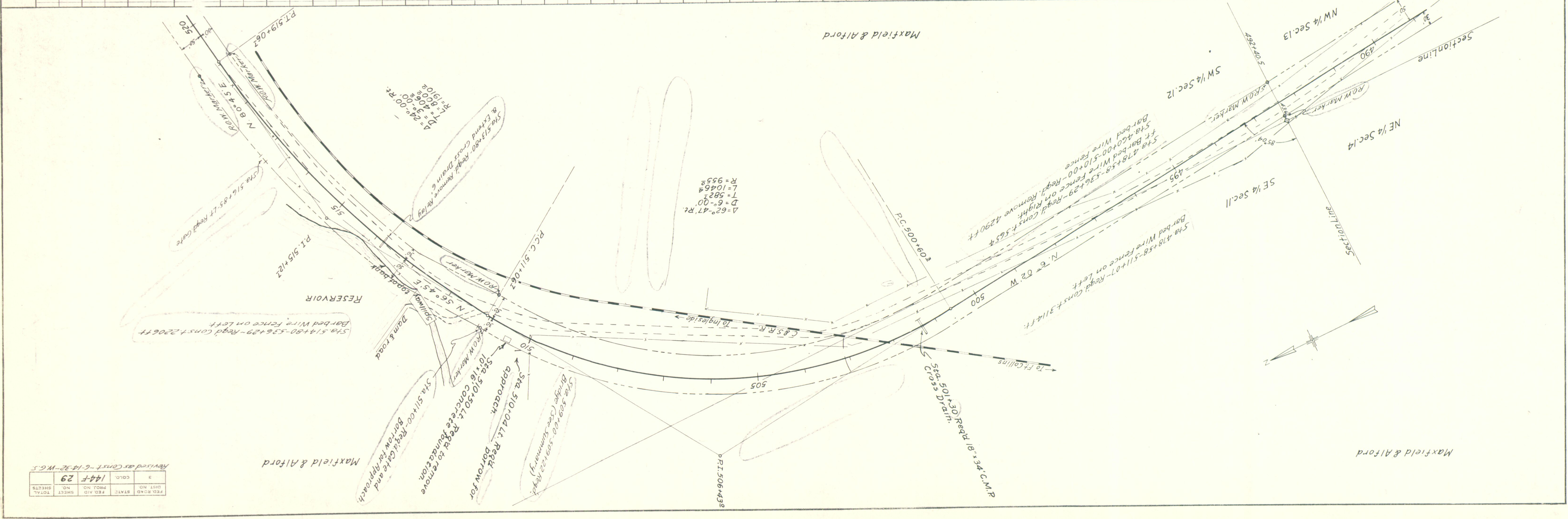
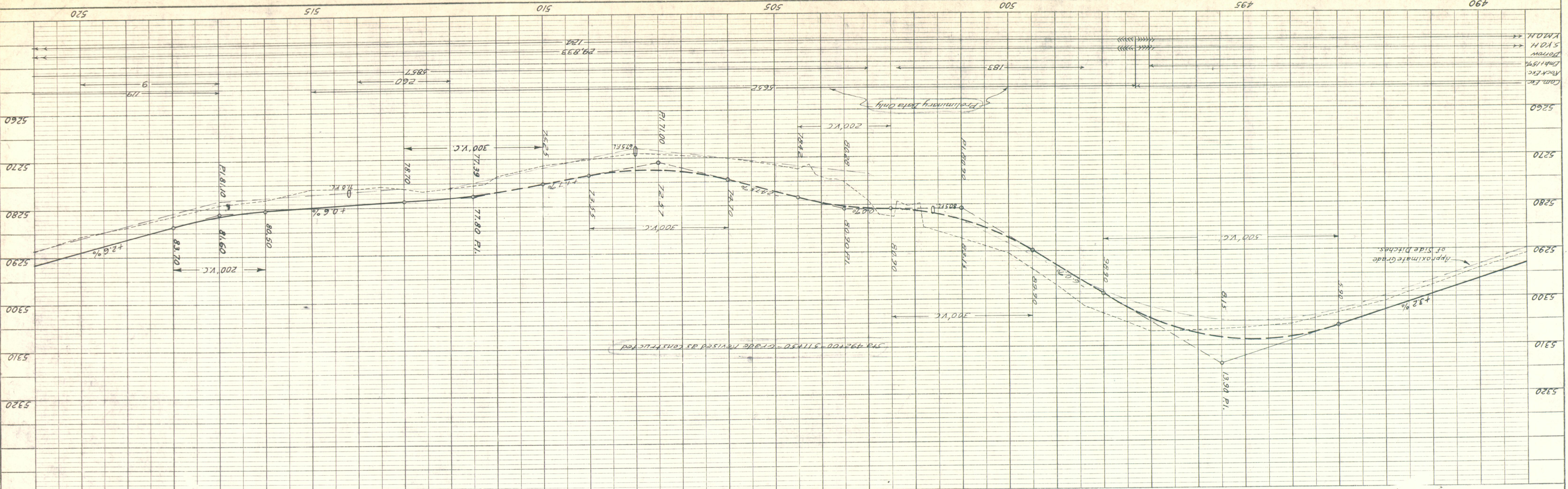
Maxfield & Alford

FIGURE 1 - PLAN-PROFILE. O. R. R. & E. STANDING

FEED NO.	STATE	FEED NO.	SHEET	TOTAL
3	COLO.	144-F	28	1163
Revised as shown on 1-27-32-1163				

PROFILE	SURVEYED	BY	DATE
NOTED	GRADES CHECKED		
NOTE BOOK	B.M. NOTED		
NO.	STRUCTURE NOTATIONS CHANGED		

PLAN	SURVEYED	BY	DATE
NOTED	ALIGNED CHECKED		
NOTE BOOK	RT. OR WAY CHECKED		
NO.			



490 495 500 505 510 515 520

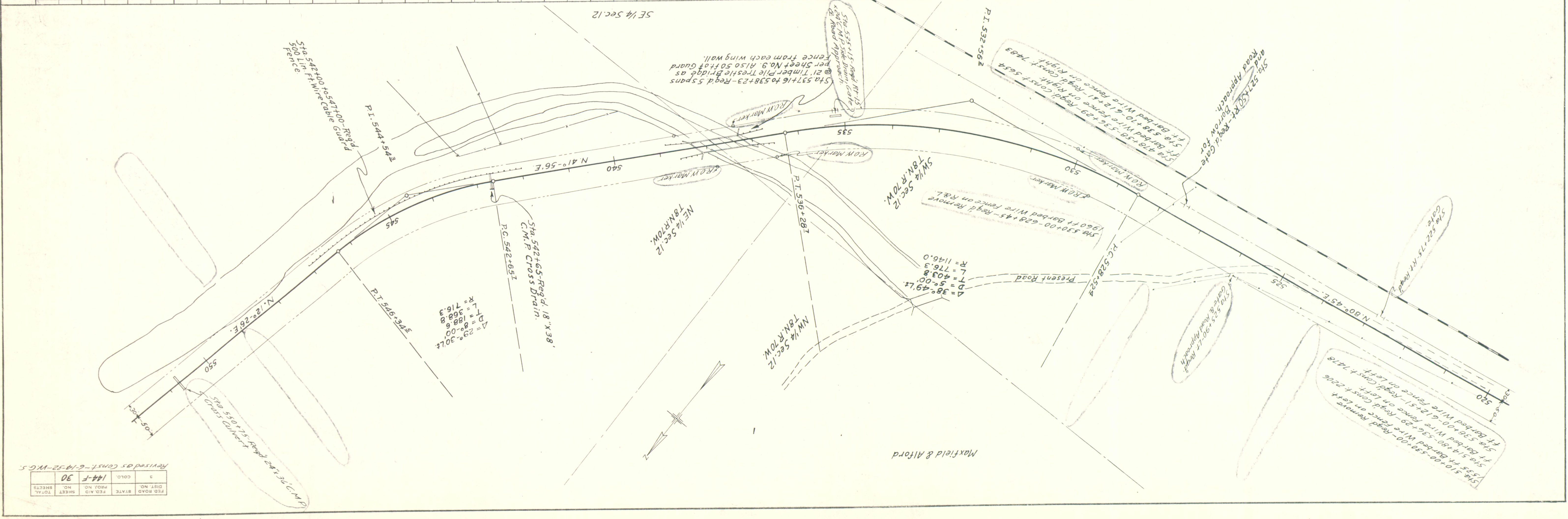
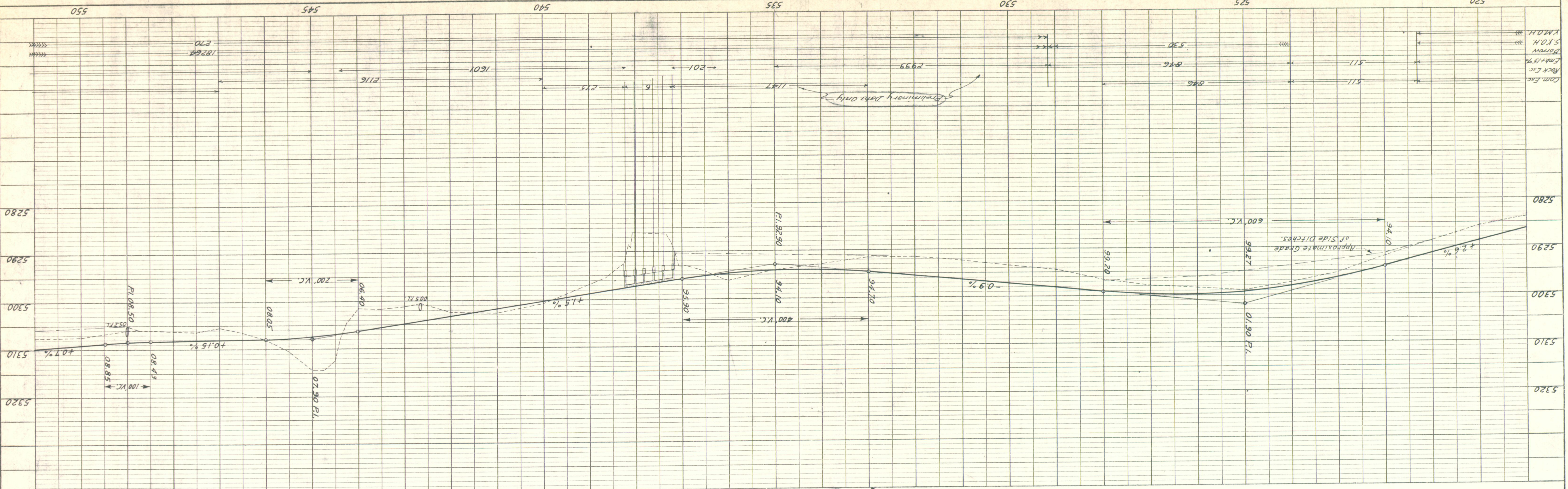
5260 5270 5280 5290 5300 5310 5320

Cam. Exp. 1.5%  
 Rock Exc.  
 Emb. 1.5%  
 Bottom  
 S.M.H.  
 Y.M.H.

REV. NO.	DATE	BY	DESCRIPTION
1			
2			
3			
4			
5			
6			
7			
8			
9			
10			
11			
12			
13			
14			
15			
16			
17			
18			
19			
20			
21			
22			
23			
24			
25			
26			
27			
28			
29			
30			
31			
32			
33			
34			
35			
36			
37			
38			
39			
40			
41			
42			
43			
44			
45			
46			
47			
48			
49			
50			
51			
52			
53			
54			
55			
56			
57			
58			
59			
60			
61			
62			
63			
64			
65			
66			
67			
68			
69			
70			
71			
72			
73			
74			
75			
76			
77			
78			
79			
80			
81			
82			
83			
84			
85			
86			
87			
88			
89			
90			
91			
92			
93			
94			
95			
96			
97			
98			
99			
100			

DATE	
BY	
STRUCTURE NO. IN S.W. 1/4	
NO. OF WAJ CHECKED	
PLANNING CHECKED	
NOTE BOOK	
GRADES CHECKED	
PLANNING CHECKED	
NO. OF WAJ CHECKED	
STRUCTURE NO. IN S.W. 1/4	
NO. OF WAJ CHECKED	
PLANNING CHECKED	
NOTE BOOK	
GRADES CHECKED	
PLANNING CHECKED	
NO. OF WAJ CHECKED	
STRUCTURE NO. IN S.W. 1/4	

DATE	
BY	
STRUCTURE NO. IN S.W. 1/4	
NO. OF WAJ CHECKED	
PLANNING CHECKED	
NOTE BOOK	
GRADES CHECKED	
PLANNING CHECKED	
NO. OF WAJ CHECKED	
STRUCTURE NO. IN S.W. 1/4	
NO. OF WAJ CHECKED	
PLANNING CHECKED	
NOTE BOOK	
GRADES CHECKED	
PLANNING CHECKED	
NO. OF WAJ CHECKED	
STRUCTURE NO. IN S.W. 1/4	



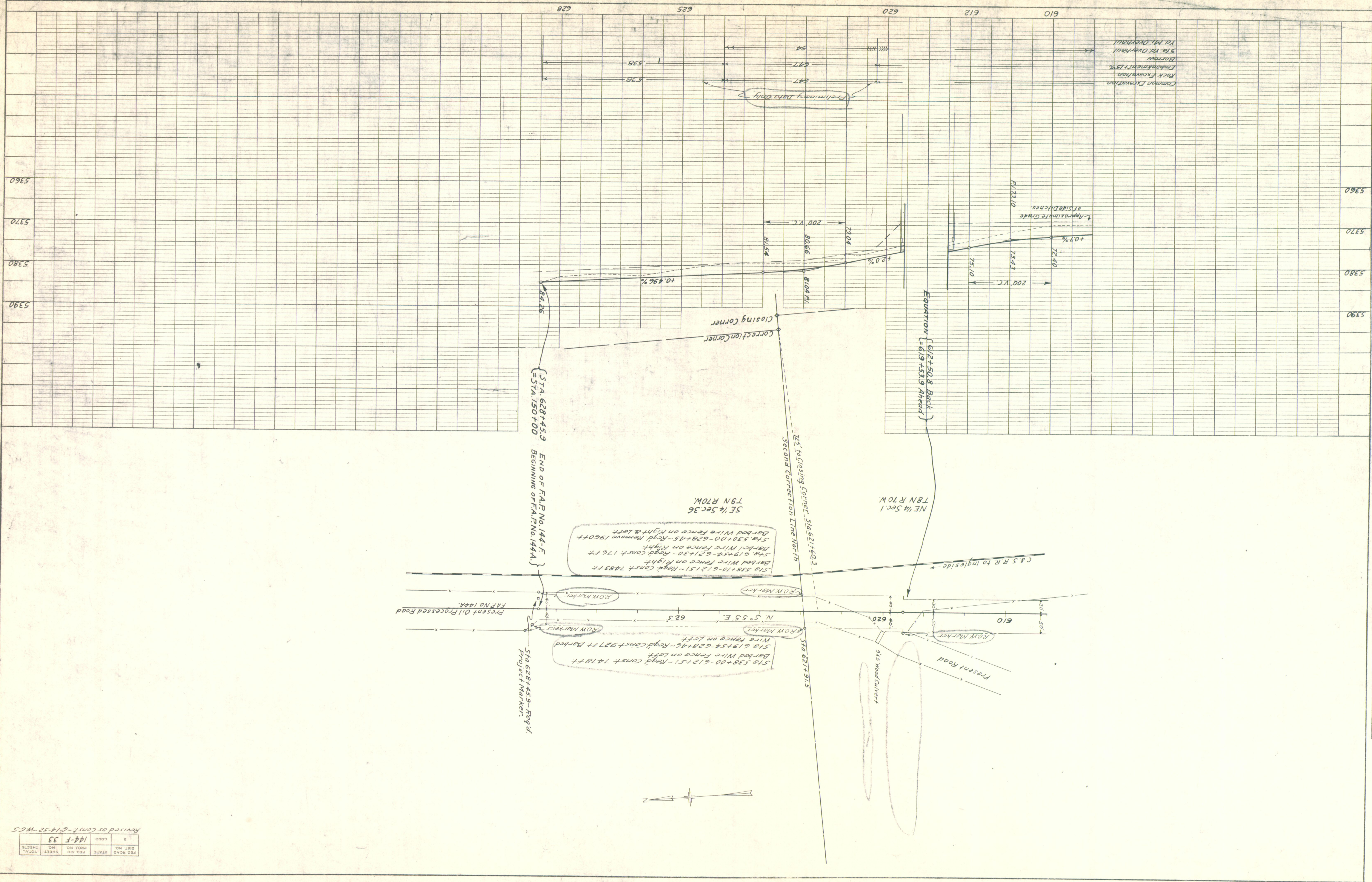
REV. NO.	DATE	STATE	REV. NO.	SHEET	TOTAL
1			144-F	30	
Revised Const. - 6-14-32 - W.G.S.					





PROFILE	SUBMITTED	BY	DATE
NOTE BOOK	PLOTTED		
NO.	BY		
	STRUCTURE		
	MOVING		
	CONV.		

PLAN	SUBMITTED	BY	DATE
NOTE BOOK	PLOTTED		
NO.	ALIGNED		
	RT. OF WAY		
	CHECKED		



Revised as Cont. - 6-14-32 - WGS

3	144-F-33
STATE	PROJ. NO.
SHEET	SHEETS
TOTAL	



PLATE 1 - PLAN - PROFILE OF P. R. & E. STRAUB