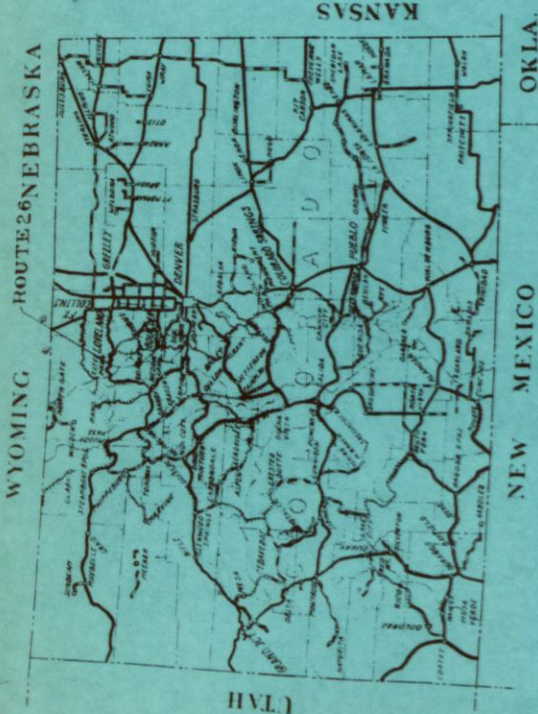


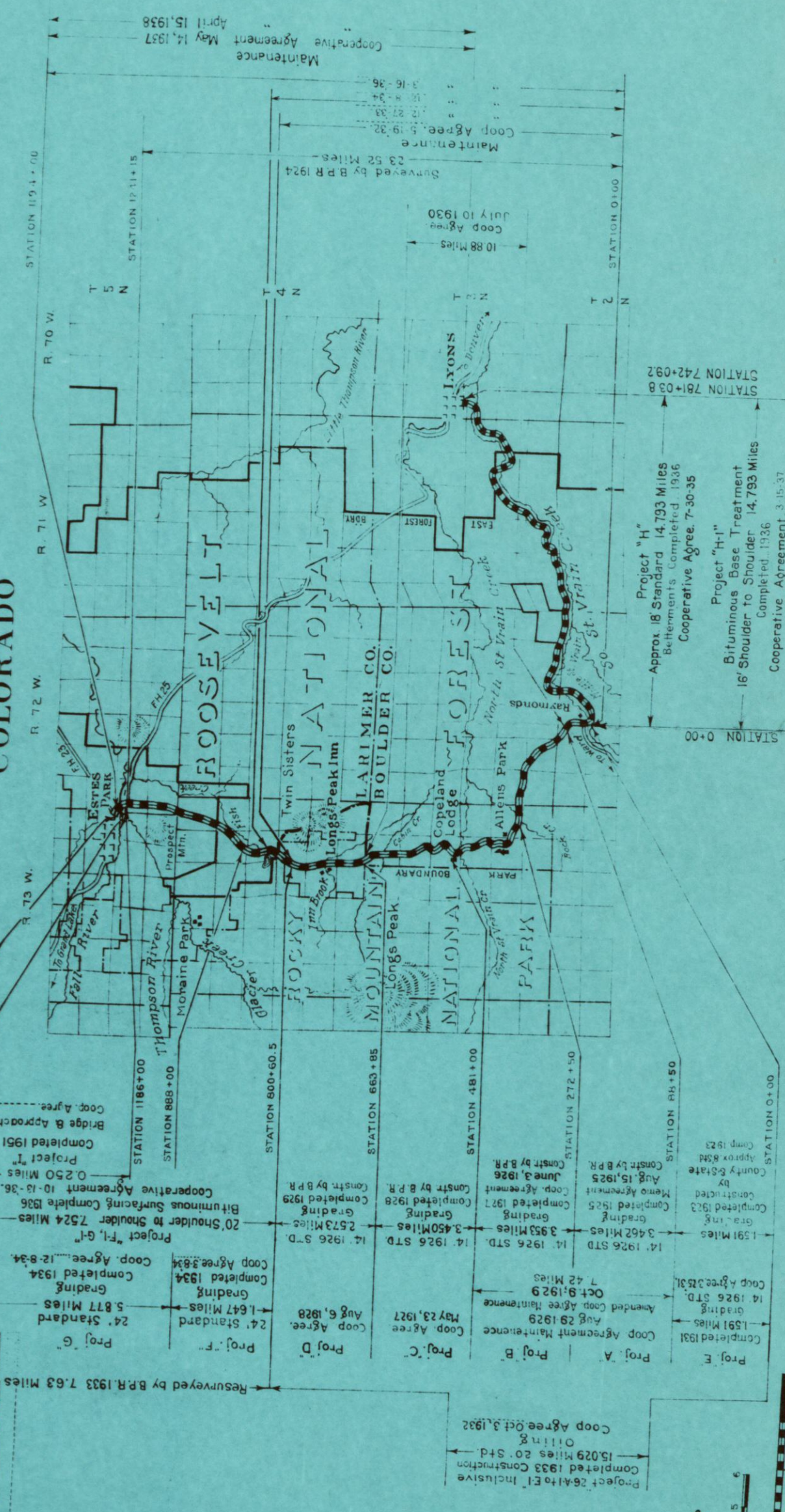
U.S. DEPARTMENT OF COMMERCE  
BUREAU OF PUBLIC ROADS

AS CONSTRUCTED  
PROJECT 26-1  
ROUTE 26 SOUTH ST. VRAIN HIGHWAY  
LYONS VIA RAYMONDS TO ESTES PARK  
37 MILES CLASS 2  
COLORADO FOREST HIGHWAY SYSTEM

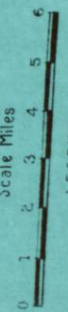
ROOSEVELT NATIONAL FOREST  
BOULDER & LARIMER COUNTIES  
COLORADO



Federal Aid Highway System  
Forest Highway System  
National Forests



INDEX MAP



LEGEND

EXISTING ROADS	UNIMPROVED	GRADED	REINFORCED	SUBGRADE	COURSE	BASE	PAVEMENT	GRAVEL	BITUMINOUS	TYPES
----------------	------------	--------	------------	----------	--------	------	----------	--------	------------	-------

INDEX TO SHEETS

SHEET NO.	DESCRIPTION	STATION
1	Title Sheet	
2	Typical Sections	
3	Summary	
42	Plan & Profile	
Rev. 03-51443	Typical Construction Signs	1186+00 to 1199+20
Rev. 03-51444	Std. Emb't. inlets & Drains	
D3-SP 345	Conc. Box Culvert Extension	1197+15
D3-SP 346	Minor Structures	
R6922A10G	Big Thompson River Bridge	1192+47.83 to 1193+32.77
1-3	Cross Sections	1186+00 to 1199+22

U.S. DEPARTMENT OF COMMERCE  
BUREAU OF PUBLIC ROADS  
DIVISION NO. 9 DENVER, COLORADO

APPROVED	DIVISION ENGINEER	DATE	19
APPROVED	BY DESIGN ENGINEER	DATE	19
APPROVED	DISTRICT ENGINEER	DATE	19
APPROVED	REGIONAL FORESTER	DATE	19
APPROVED	STATE HIGHWAY ENGINEER	DATE	19

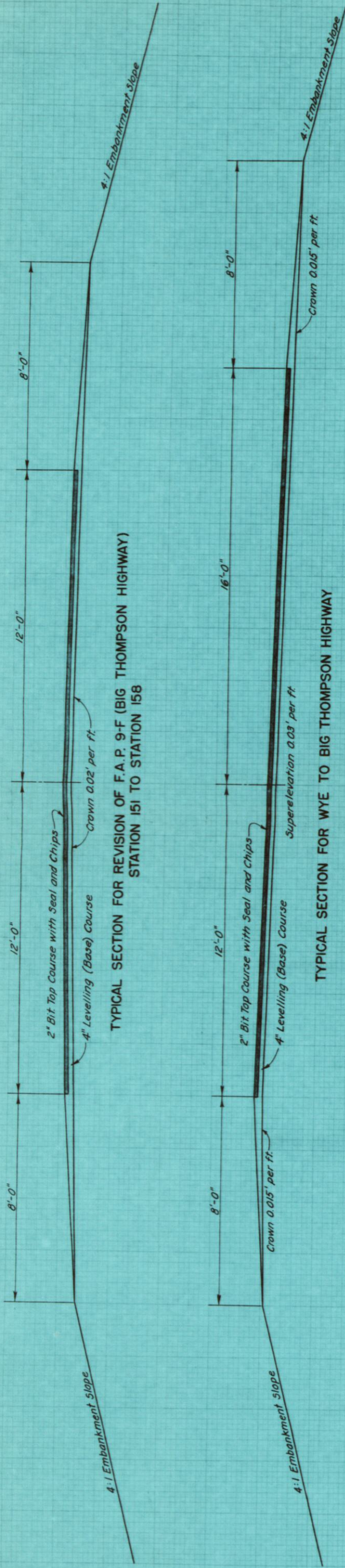


So. St. Vrain, Colo. 26-1  
Typical Sections  
Sheet No. 2

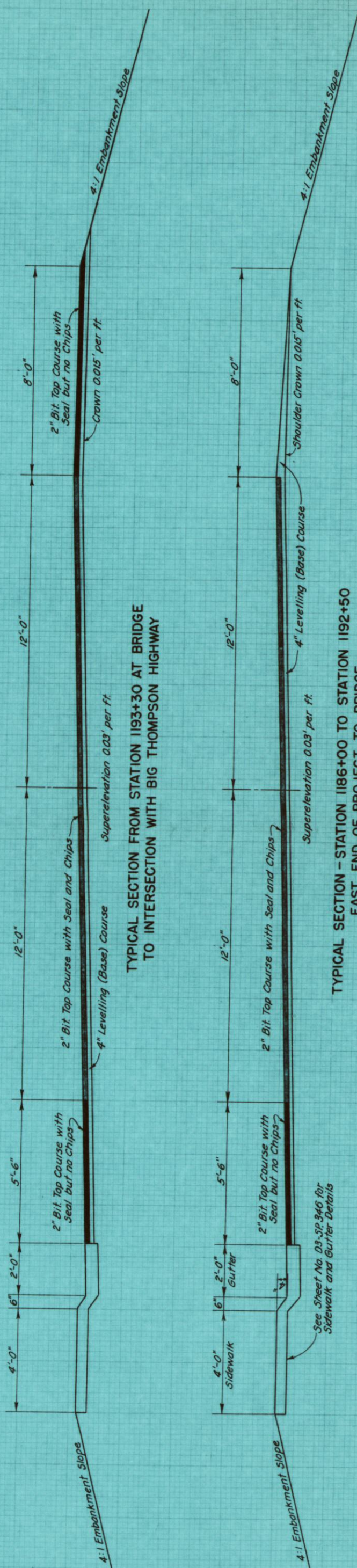
DC Macfarlane  
J.L. Chedtham  
1945

4-45

Traced



TYPICAL SECTION FOR WYE TO BIG THOMPSON HIGHWAY



TYPICAL SECTION - STATION 1186+00 TO STATION 1192+50  
EAST END OF PROJECT TO BRIDGE

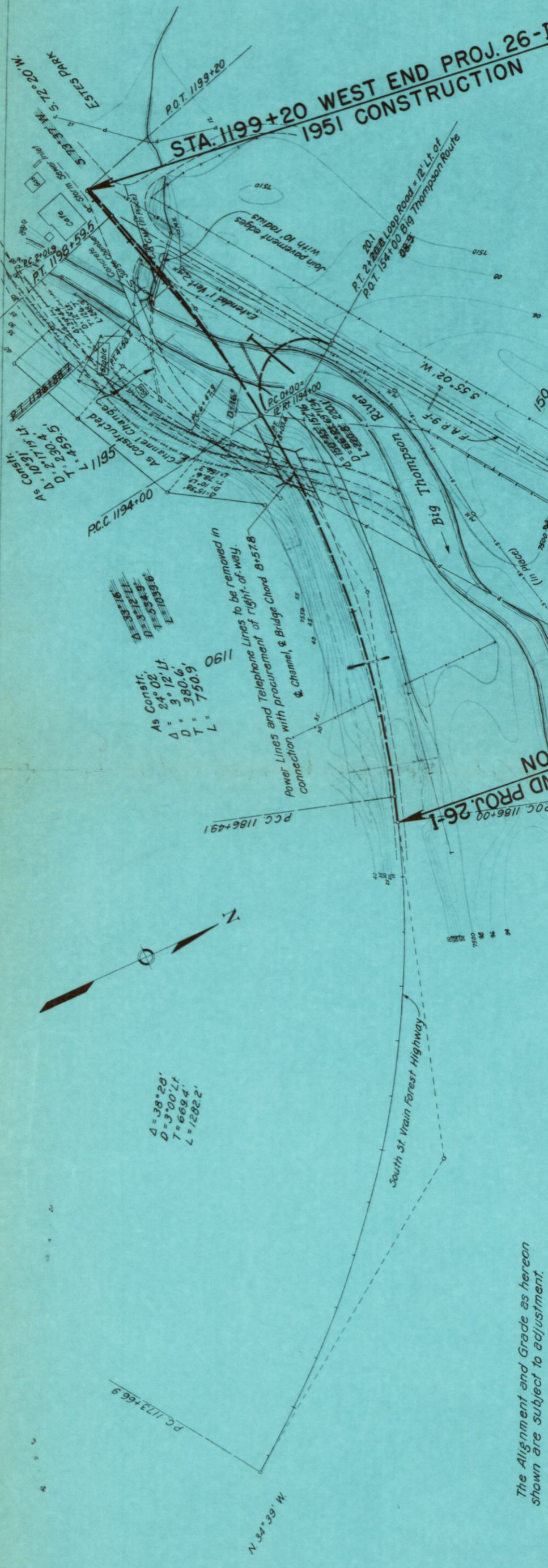
U.S. DEPARTMENT OF COMMERCE  
BUREAU OF PUBLIC ROADS  
DIVISION HCL.9 DENVER, COLO.

# TYPICAL SECTIONS

SOUTH ST. VRAIN - COLO. 26-1

AS CONSTRUCTED





*The Alignment and Grade as hereon shown are subject to adjustment.*

