

Estate of D.A. Lord

20.3 Acres

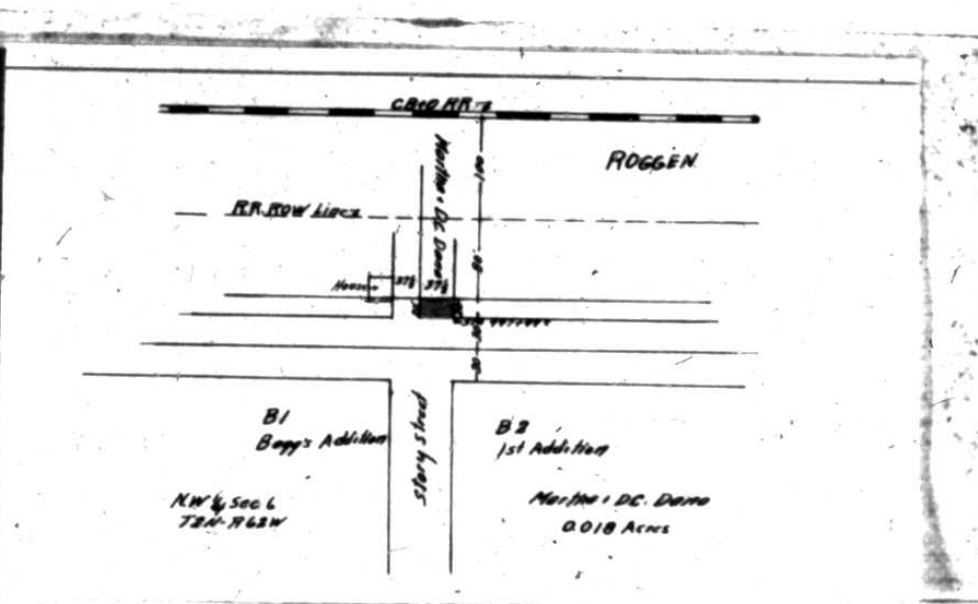
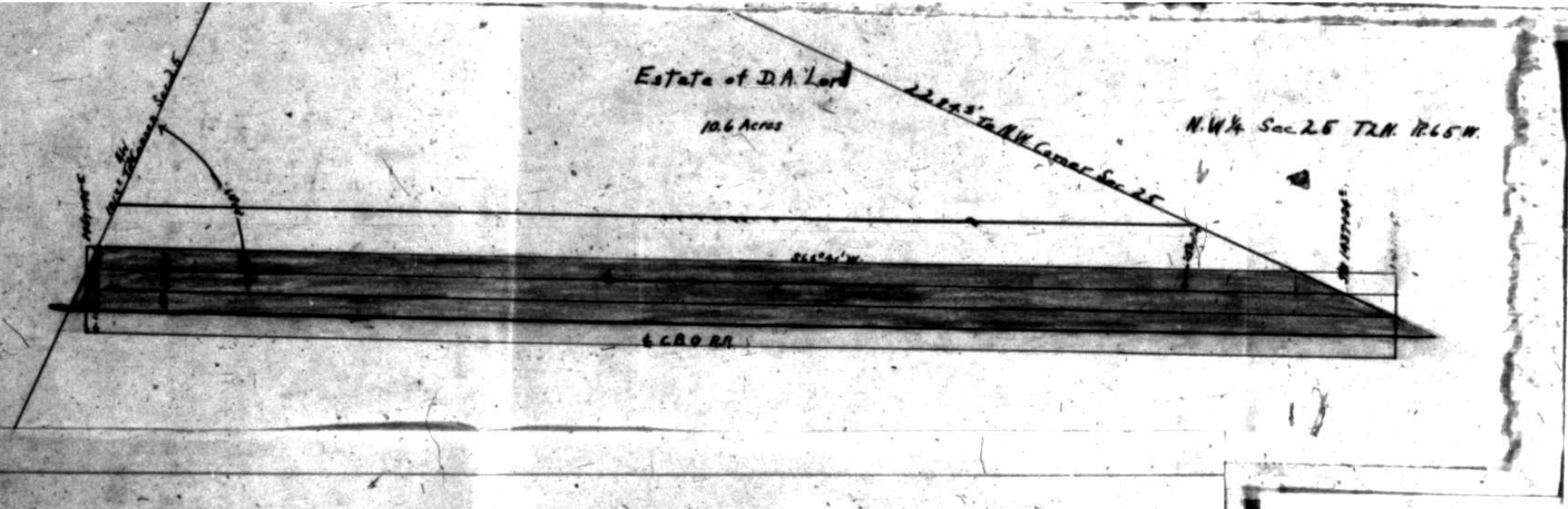
Sec. 17 T2N-R63W

224.51 W

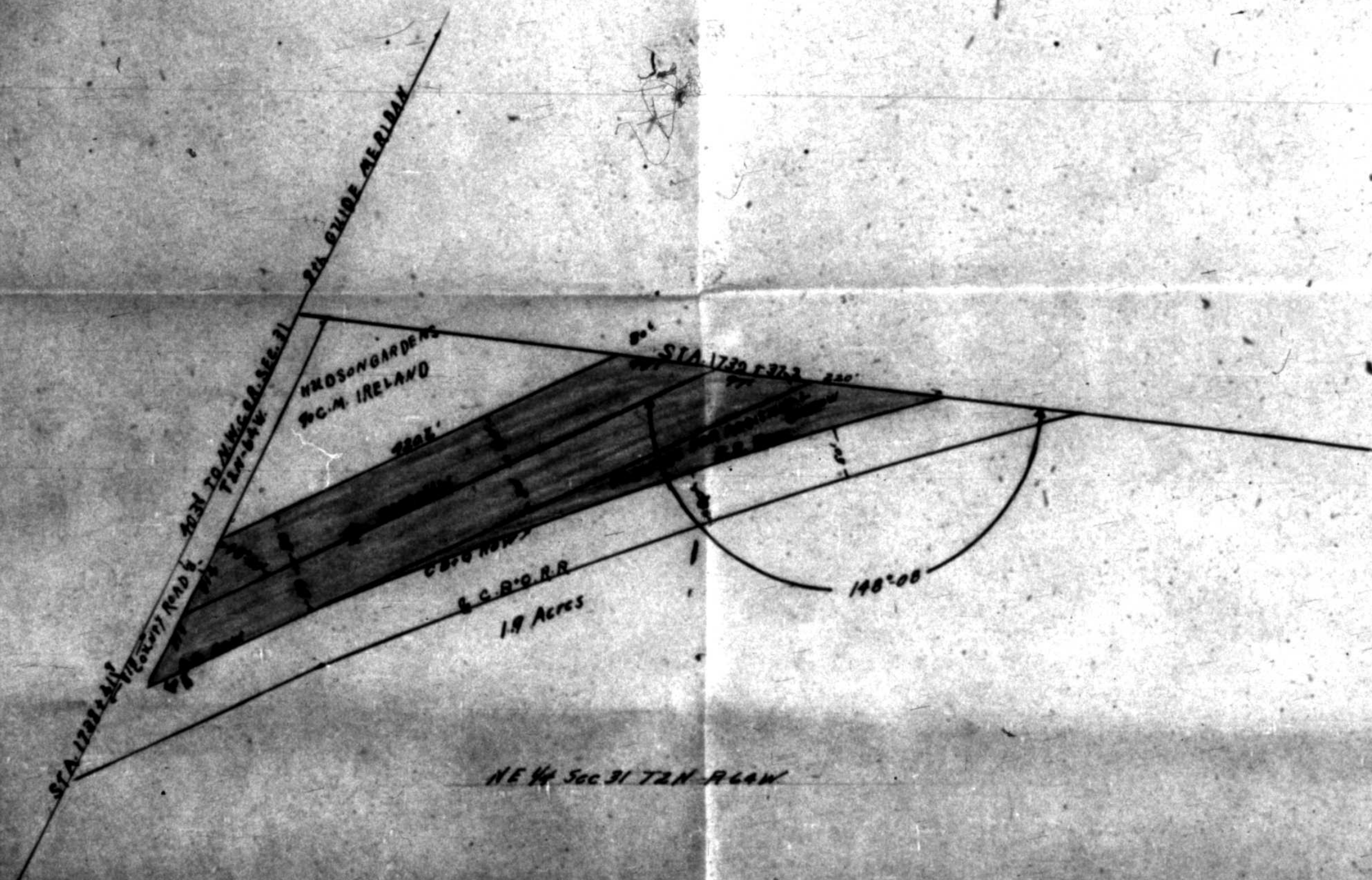
E. C. & N. R.R.

1276187 E

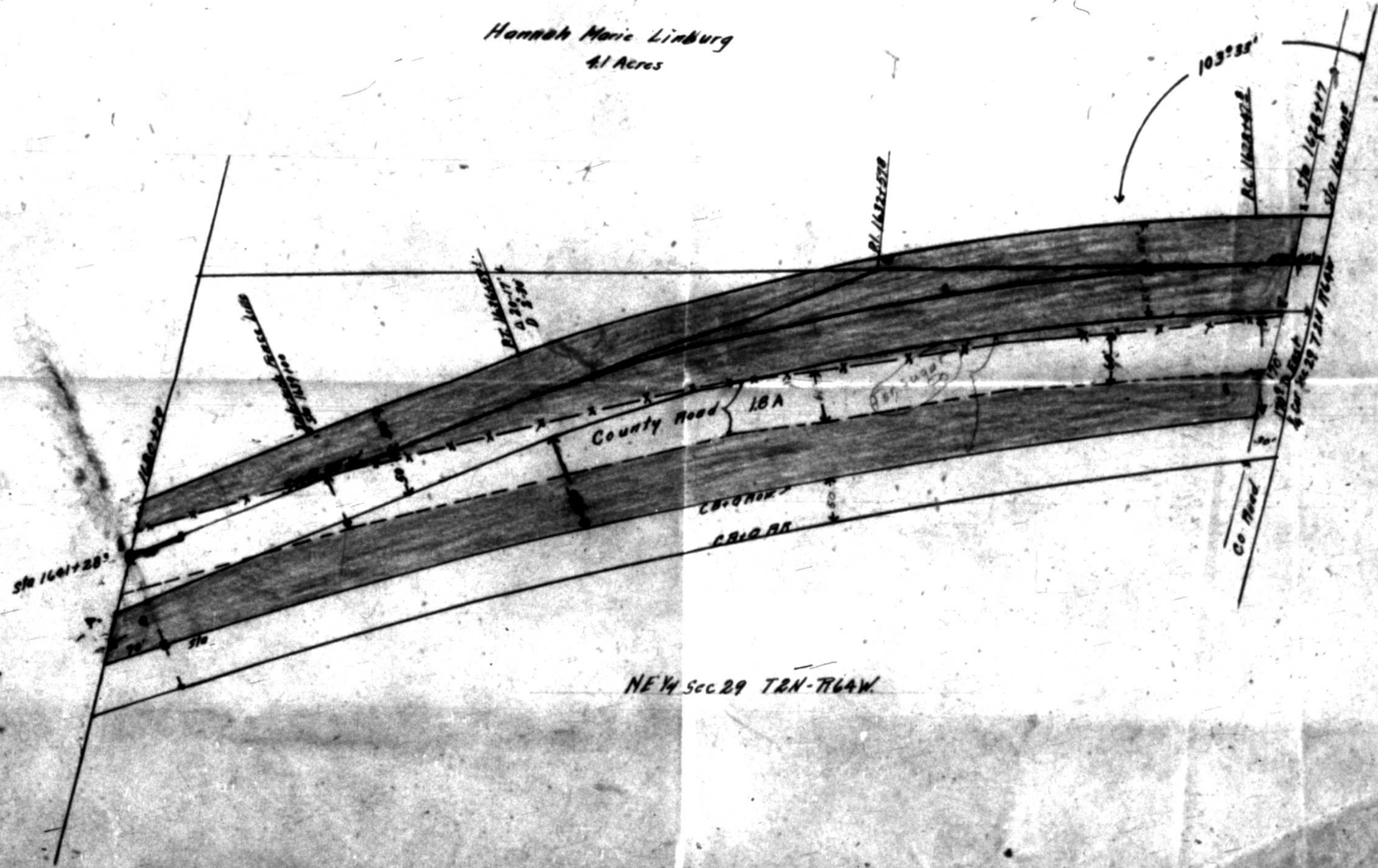
TWP. ROAD	STATE	FED. ROAD
1	1	1
2	2	2

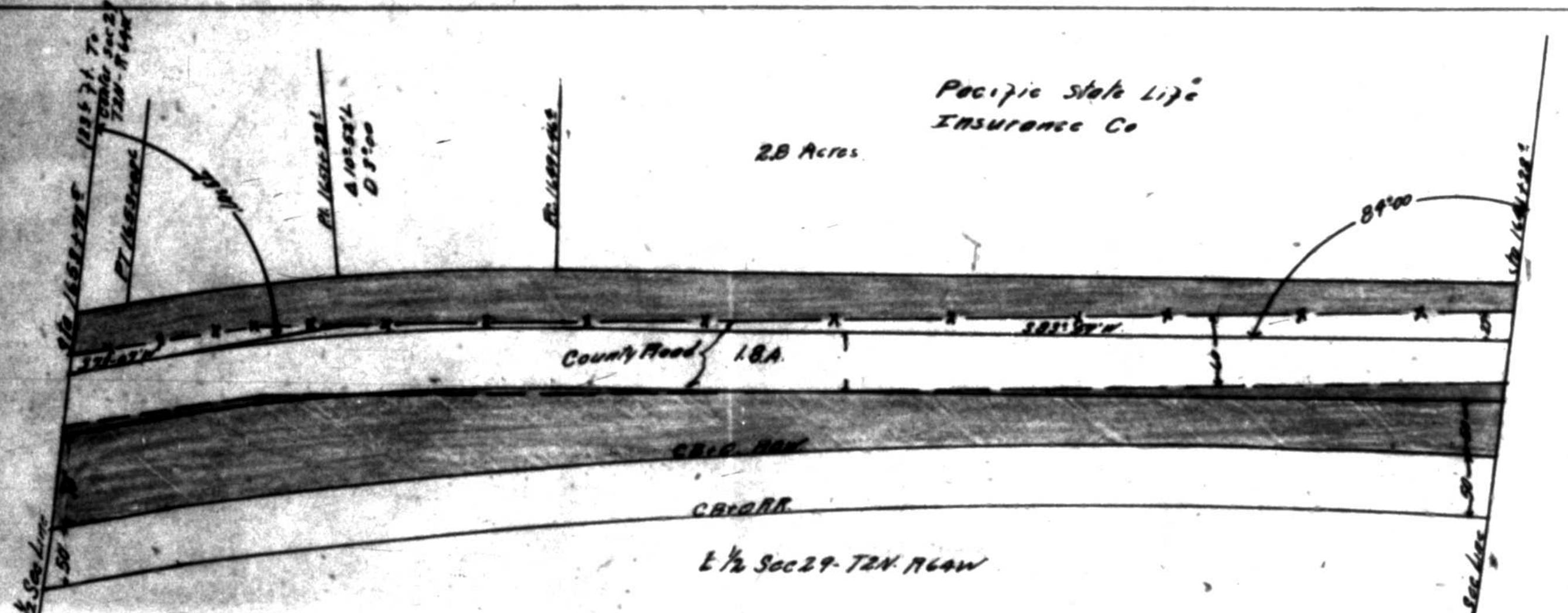


FED. ROAD DIST. NO.	STATE	FED. AID PROJ. NO.	SHEET NO.	TOTAL SHEETS
2	COLD.			



Hannah Marie Linburg
4.1 Acres





1825 74.70
T2N - R64W

P.L. 1825 74.70

P.L. 1825 74.70
4102.52' L
D 9' 00

P.L. 1825 74.70

2.8 Acres

Pacific State Life
Insurance Co

1/2 Sec Line
1.50'

374.02'

County Road 1.8A

2821.62'

89°00'

Sta 1641.22

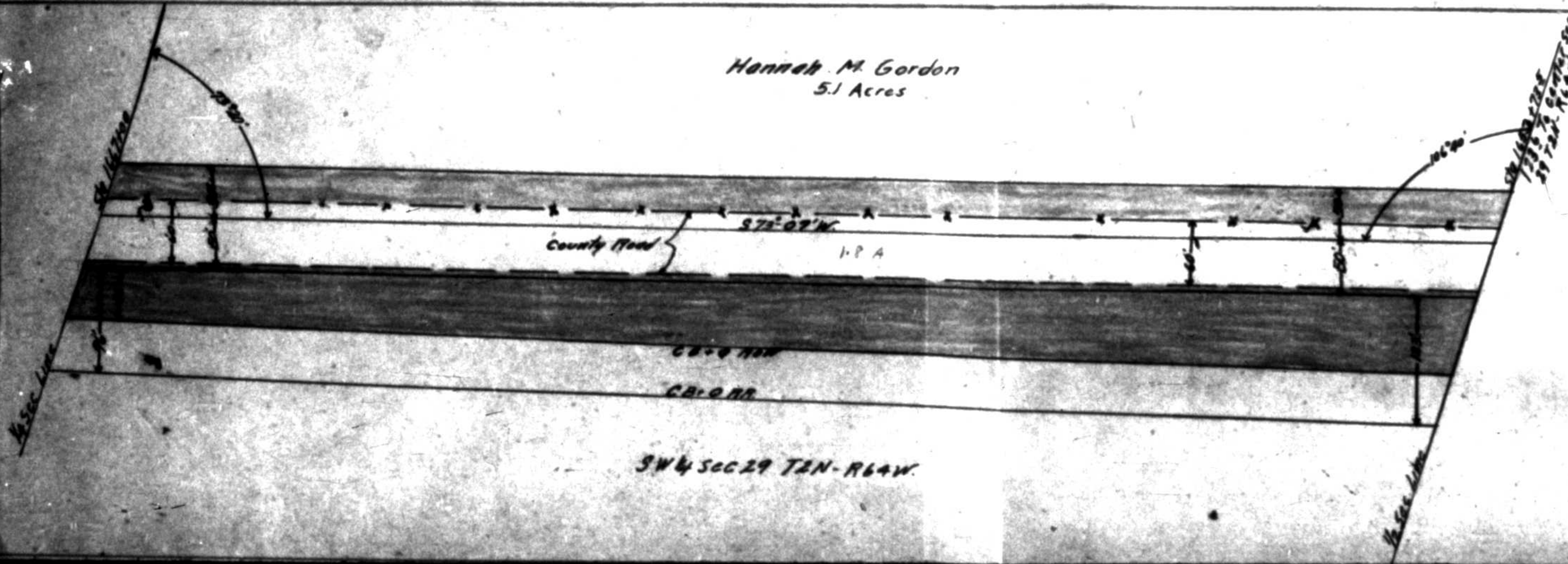
C.B. & N.W.

C.B. & N.W.

E 1/2 Sec 29 - T2N - R64W

Sec Line

Hannah M. Gordon
5.1 Acres



SW 1/4 SEC 29 T2N-R64W

Veda M. Murrah
2.85 Acres

Sto 15991908

N 89° 33' W

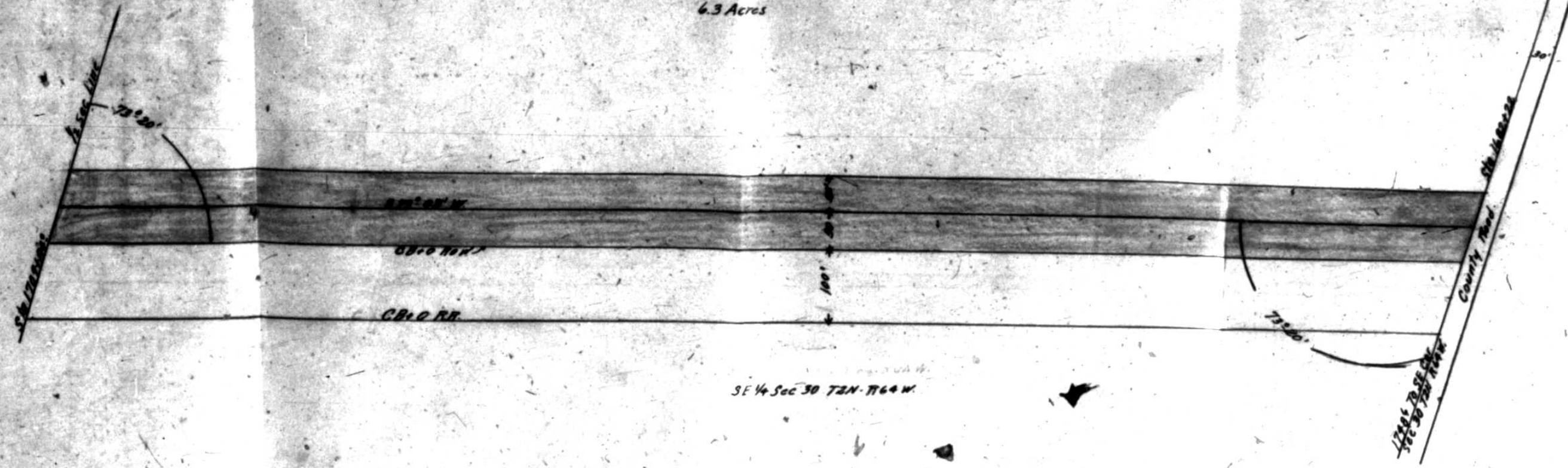
SE 1/4 Sec 28 T2N R64W

Sto 15991908

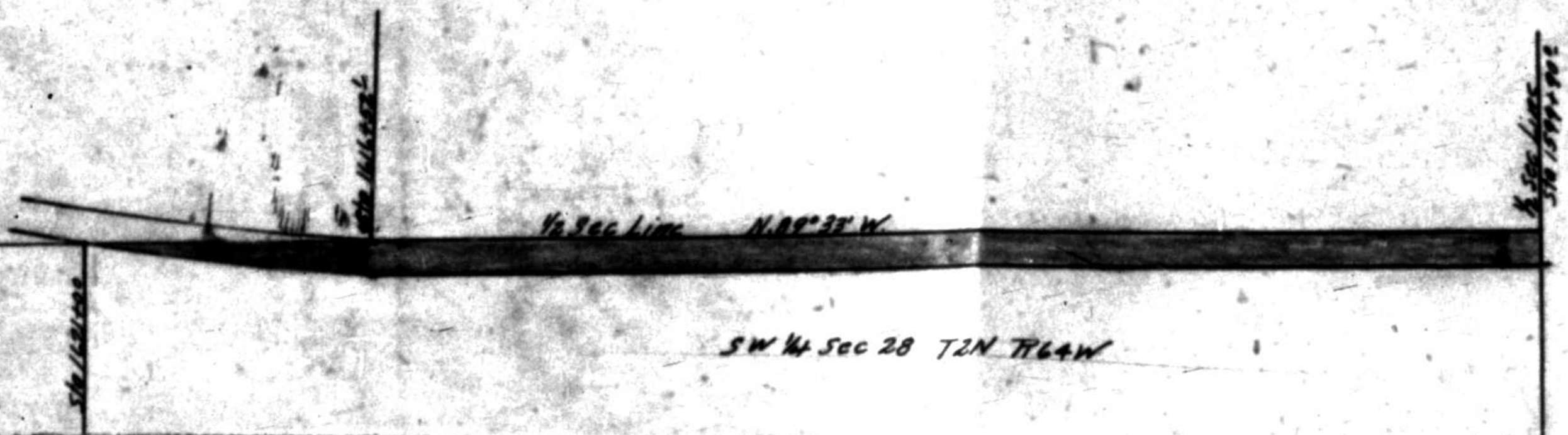
Sto 15991908
Sec 28 T2N R64W

FED. ROAD DIST. NO.	STATE	FED. AID PROJ. NO.	SHEET NO.	TOTAL SHEETS
5	-COLO.			

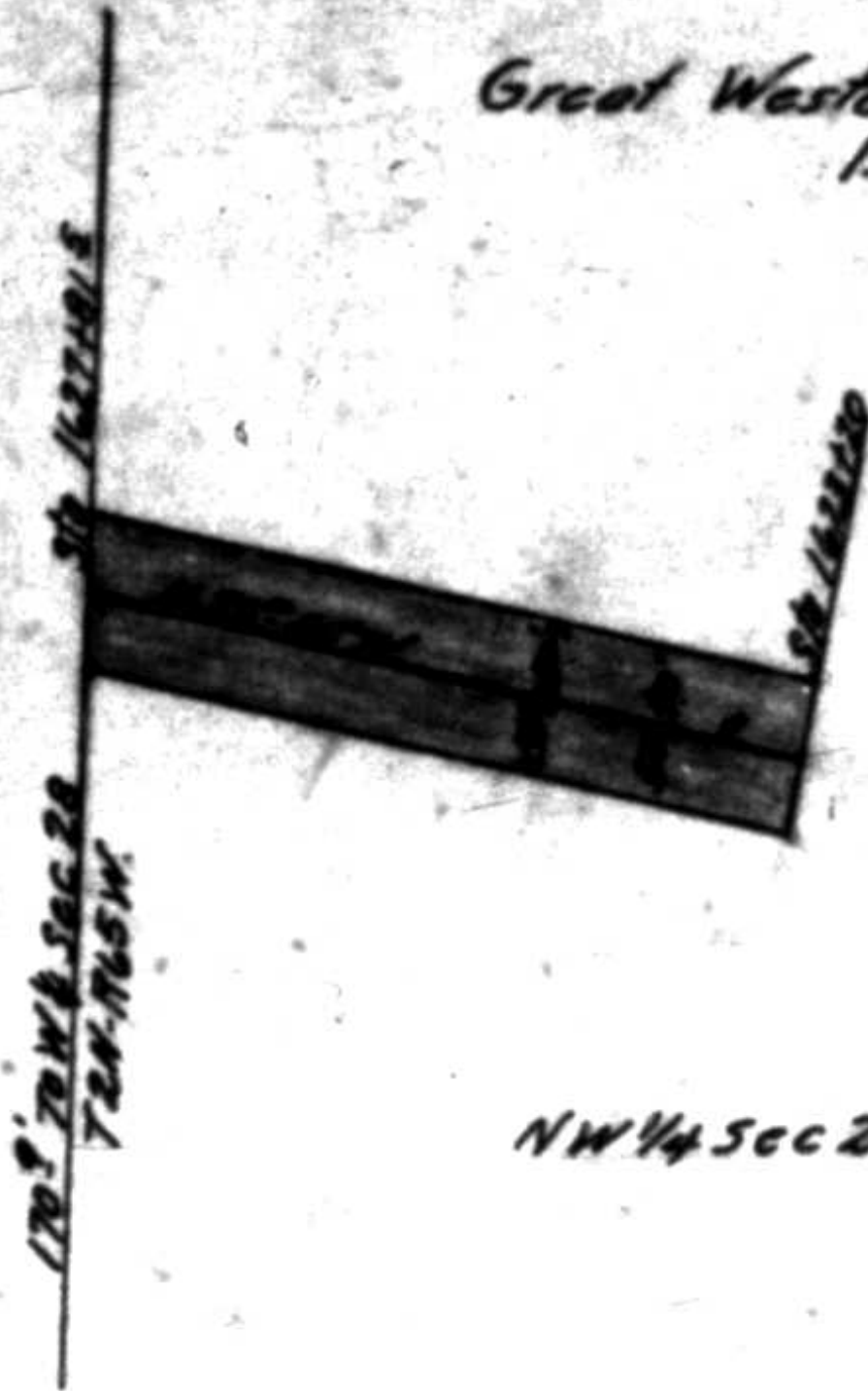
C.M. Ireland
6.3 Acres



Chas F. McClure
2.2 Acres.



Great Western Sugar Co.
1.1 Acres



NW 1/4 Sec 28 T2N R64W.

Albert Huizinga
3.1 Acres

1/4 Sec 27
Sta 15051601

26479 10 SE COR
SEC 27 T2N R64W

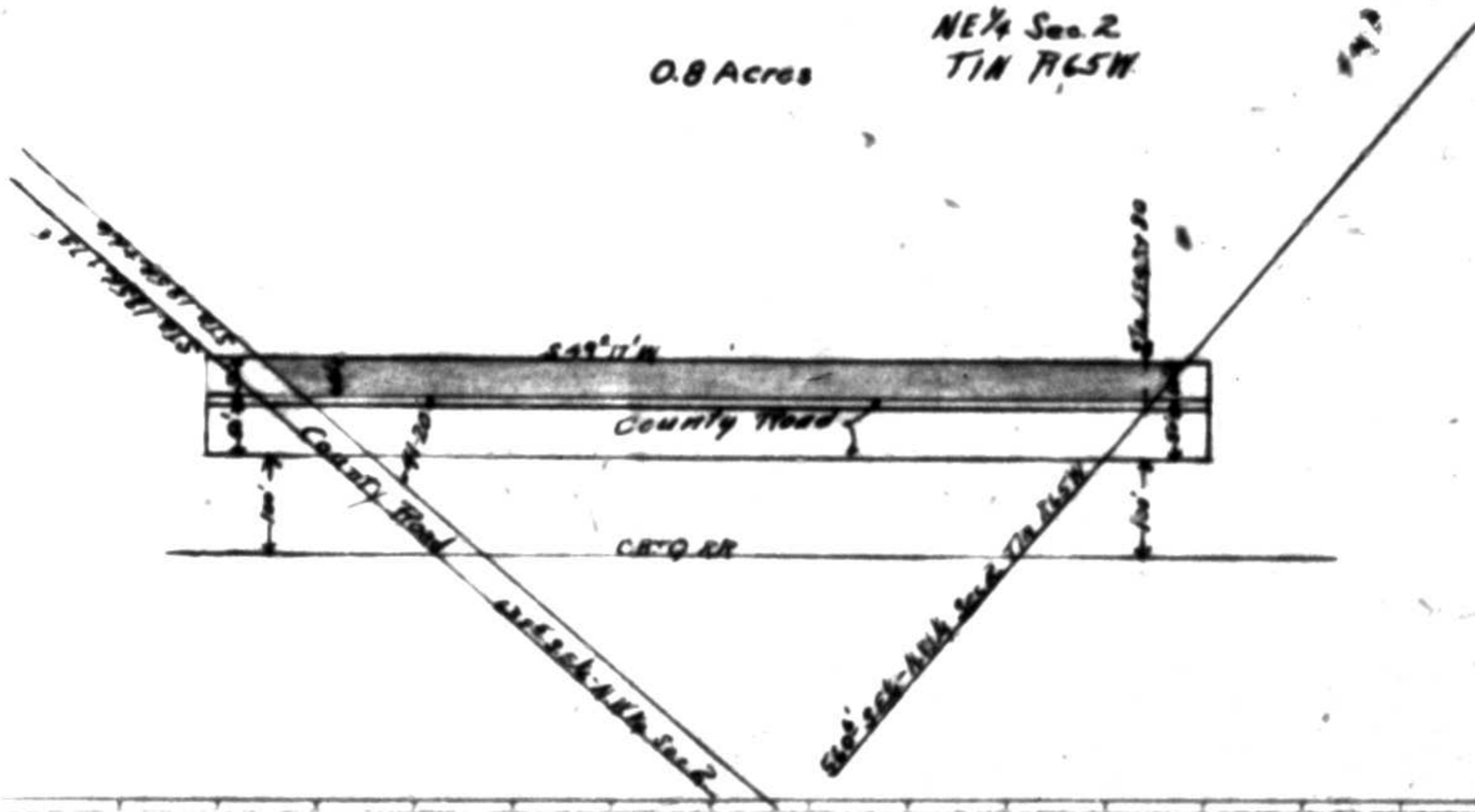
107'30" W 1/2 Sec line

E 1/2 Sec 27 T2N R64W

Hudson Gardens
% CM Ireland

0.8 Acres

NE 1/4 Sec. 2
T1N R65W



Mountain States Life
Insurance Company
64 Acres.

R. 17852-87

22° 47' 1"
0' 18"

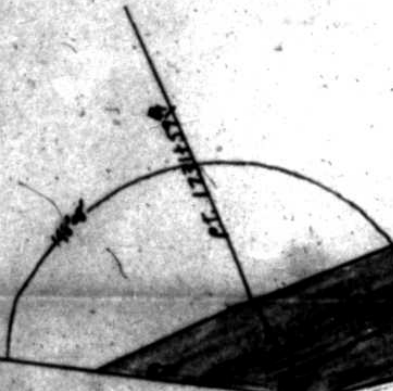
R. 17212-82

Shaded 17011-84

S 77° 07' W

100'

100'



100' 00" 00" 00" 00"
TAN R64W

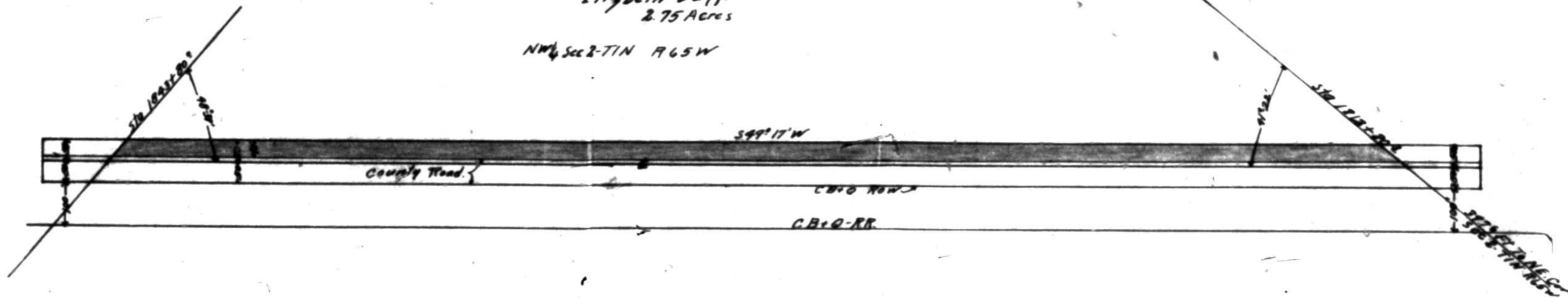
E. C. 9. R. R.

S 70° 17' 12" E

S E 1/4 Sec 30 T 2 N R 64 W.

Elizabeth Duff
2.75 Acres

NW 1/4 Sec 2-T1N R65W



CR-O RR

Roggen.

RR. ROW. Line

0.018 Acres

House

J.O. + Ida Knight

North + Dr. Drury

100'

80'

37 1/2'

37 1/2'

510 997 7679

B1
Bogg's Addition

NW 1/4 Sec 6 T2N - R62W

Story St.

B2
1st Addition

J.O. + Ida Knight
0.018 Acres

CR 10 NW 1/4

Keene Lumber Co
0.150 Acres

John F. Smith

PR-Road Line

100'

80'

75'

325'

510 997 124
House

B 1

Bogg's Addition

11099611

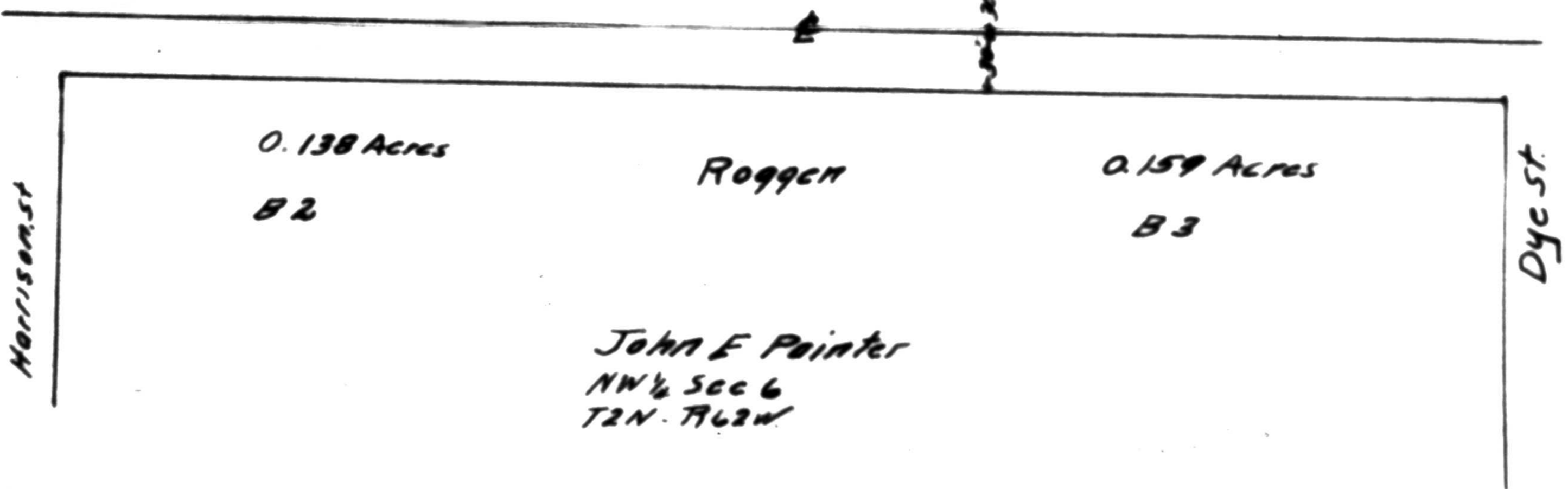
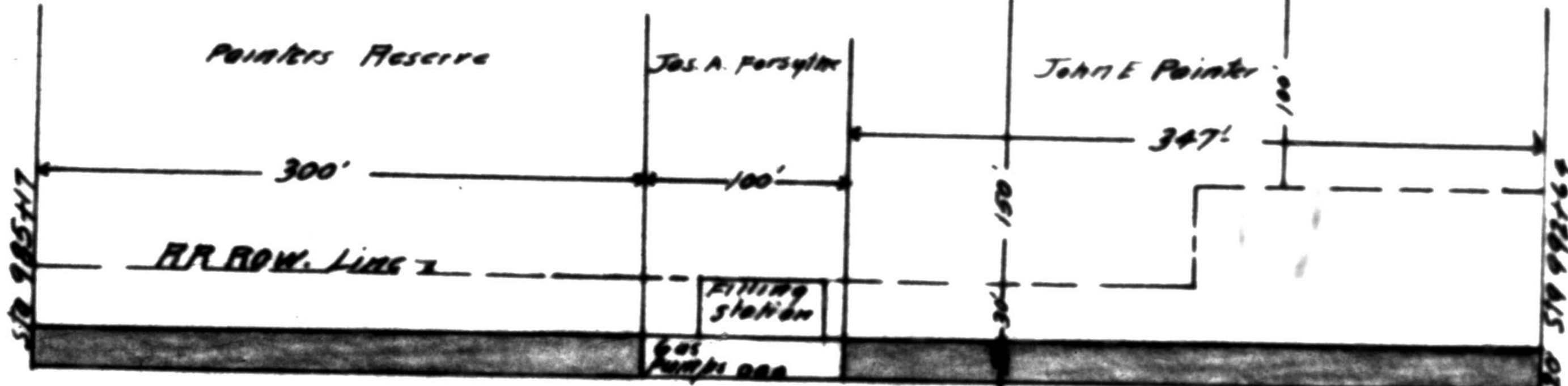
NW 1/4 Sec 6

T2N - R62W

Pye St

Story St

CB-O RR 7



Keensburg

1/2 Sec Line
Sta 1876 to 1877
1/2 Sec Line

1/2 Sec Line

Co Road

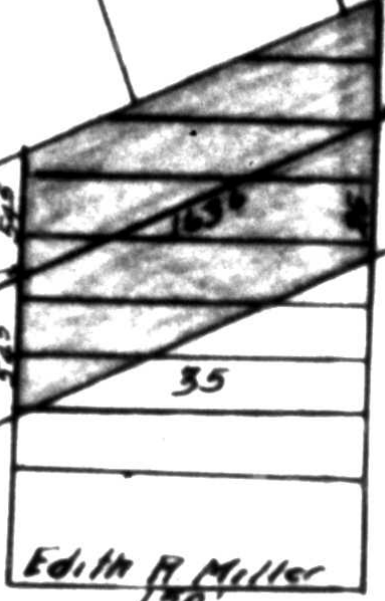
C.B. & R.R.

Depot

Sec House

House

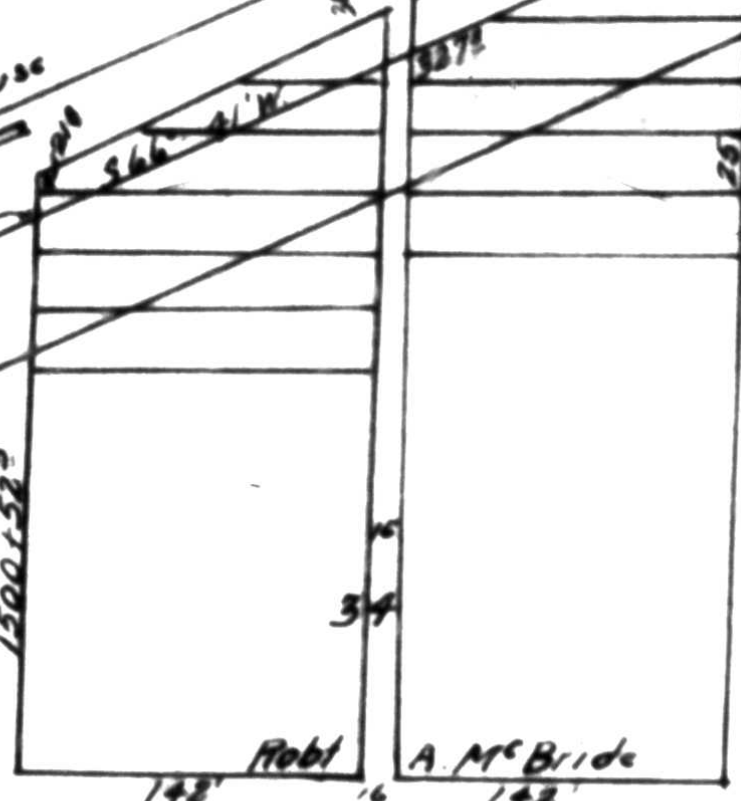
Sta 1498 to 1506
1876



0.376 Acres

Robt A McBride

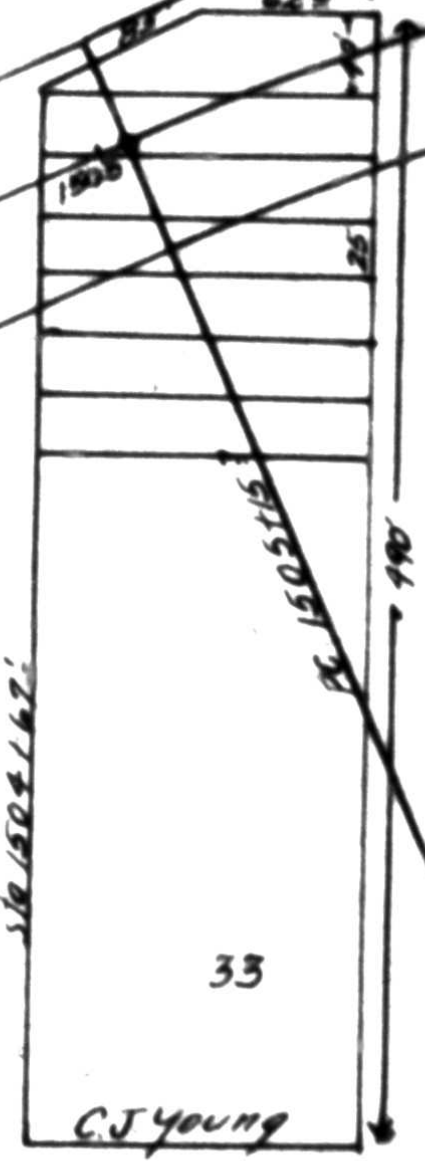
Edith R. Miller
150'



Robt

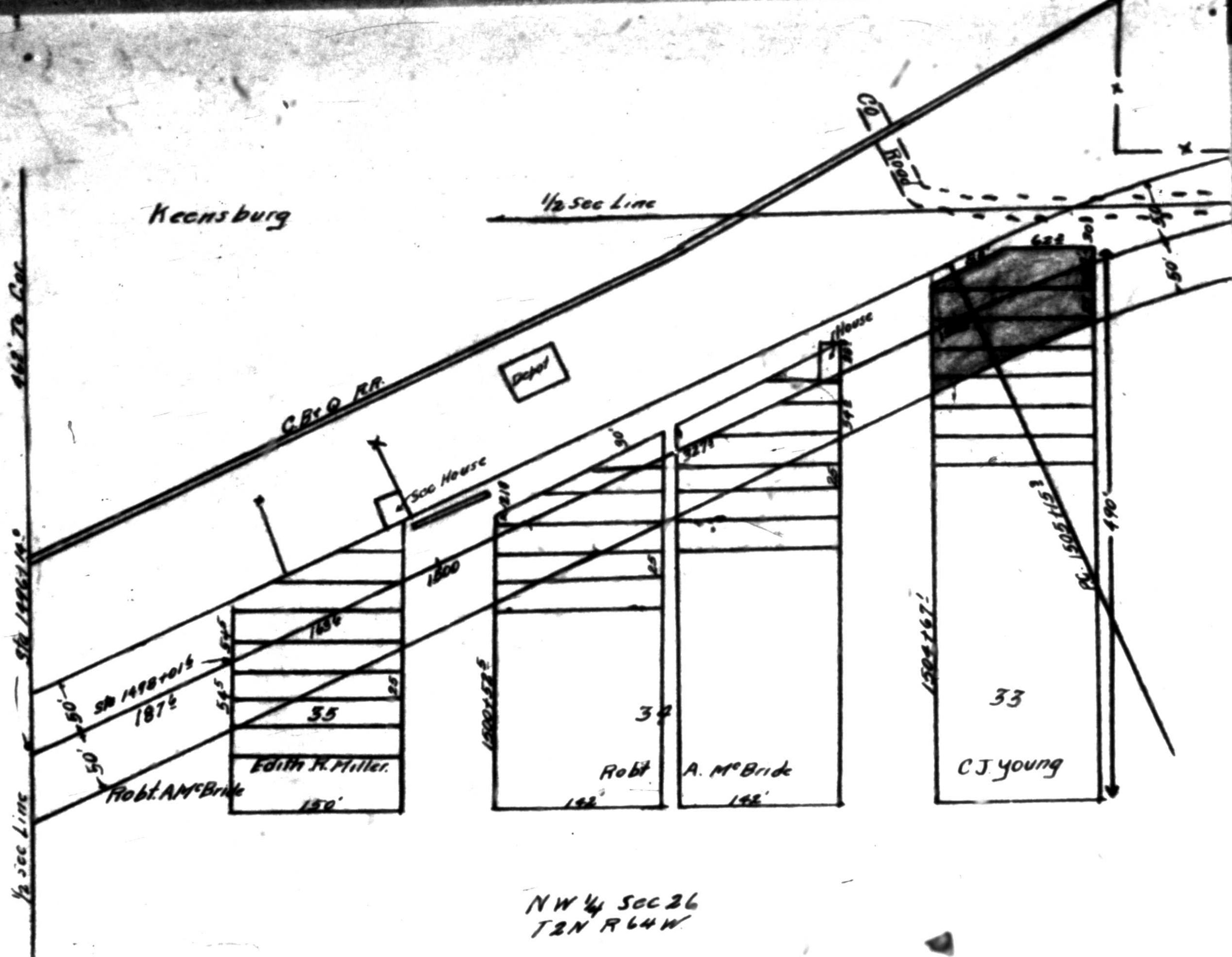
A. McBride

NW 1/4 Sec 26
T2N R64W



C.J. Young

33



NW 1/4 SEC 26
 T2N R64W

Heensburg

1/2 Sec Line

Co Road

1/2 Sec Line
440' To Sec Cor Sec 26
T2N. R64W.

C.B. & O. RR

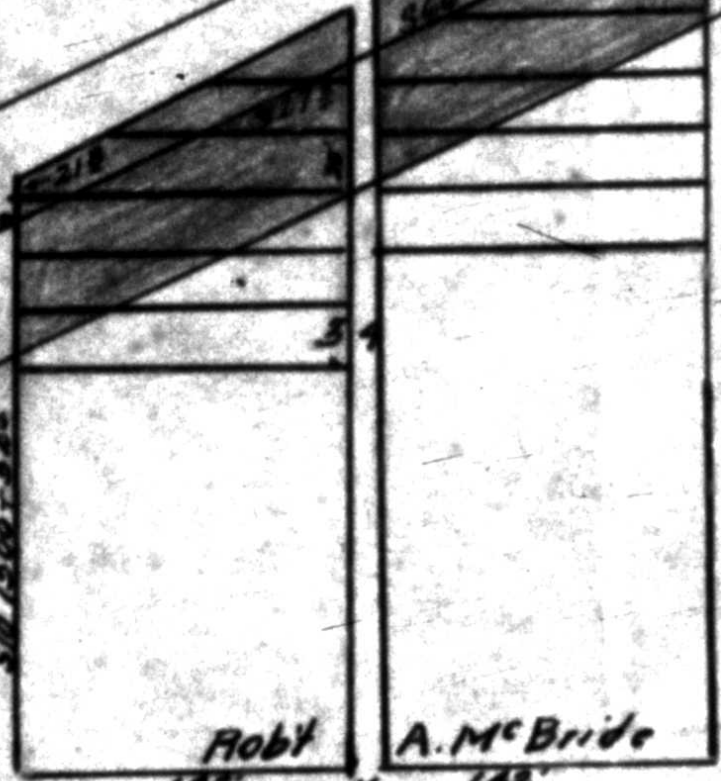
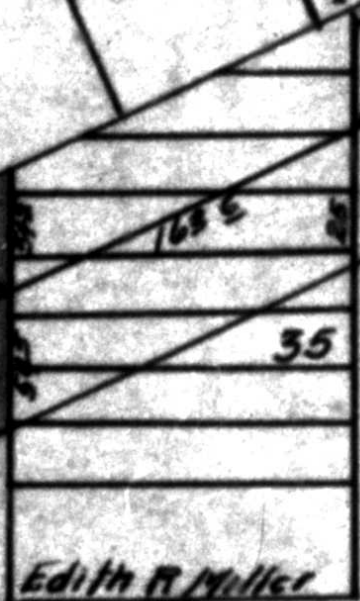
Depot

Sec House

House

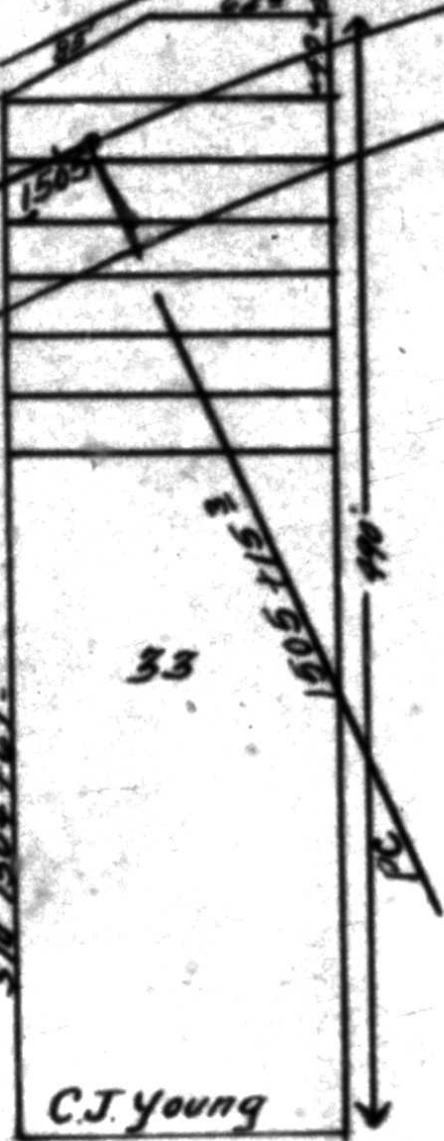
Robt. A. McBride
Edith R. Miller

0.43 Acres



Robt A. McBride

0.567 Acres



C.J. Young

NW 1/4 Sec 26
T2N. R64W.

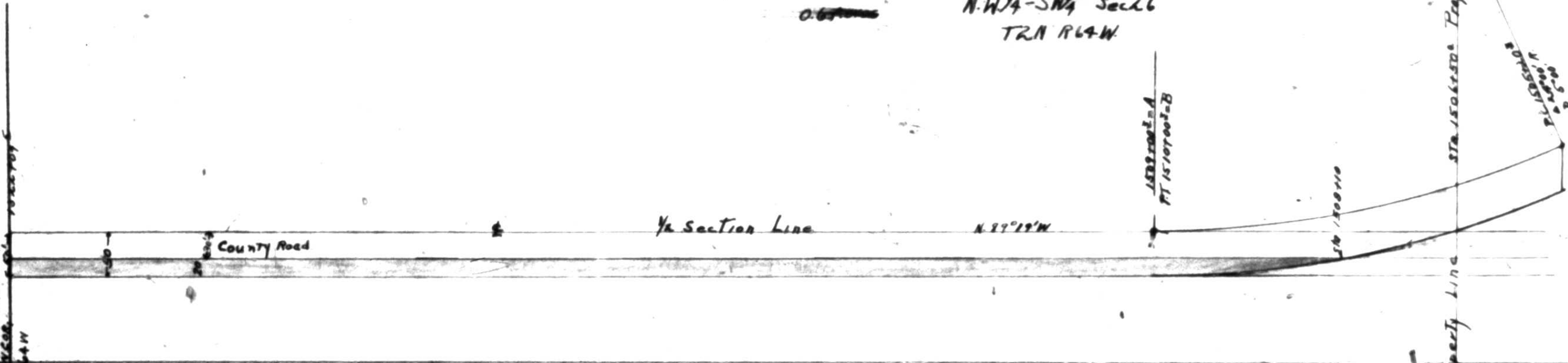
I. G. LaRue

~~0.67 acres~~

N.W. 1/4 - SW. 1/4 Sec 26
T2N R64W

2607 21 to
3150 21 Sec 26
T2N R64W

1/4 Sec
64W



1/4 Section Line

$N 89^{\circ} 19' W$

County Road

Station A
PT 1510700±=B

Sta 1500±

Property Line

Sta 1505± Property line

Sta 1505±
PT 1505±=C

Nels, Authur and Edmund Pearson
9.1 Acres

N 88° 30' W

1/2 Sec Line

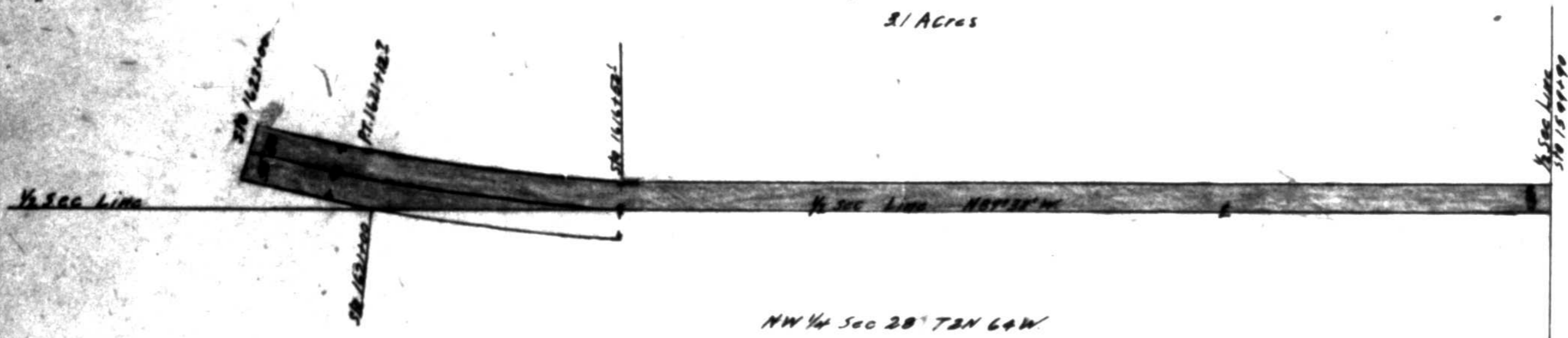
NW 1/4 Sec 27 T2N R64W

1/2 Sec Line

1/2 Sec Line

1/2 Sec Line

Fort Lupton Mercantile Co
31 Acres

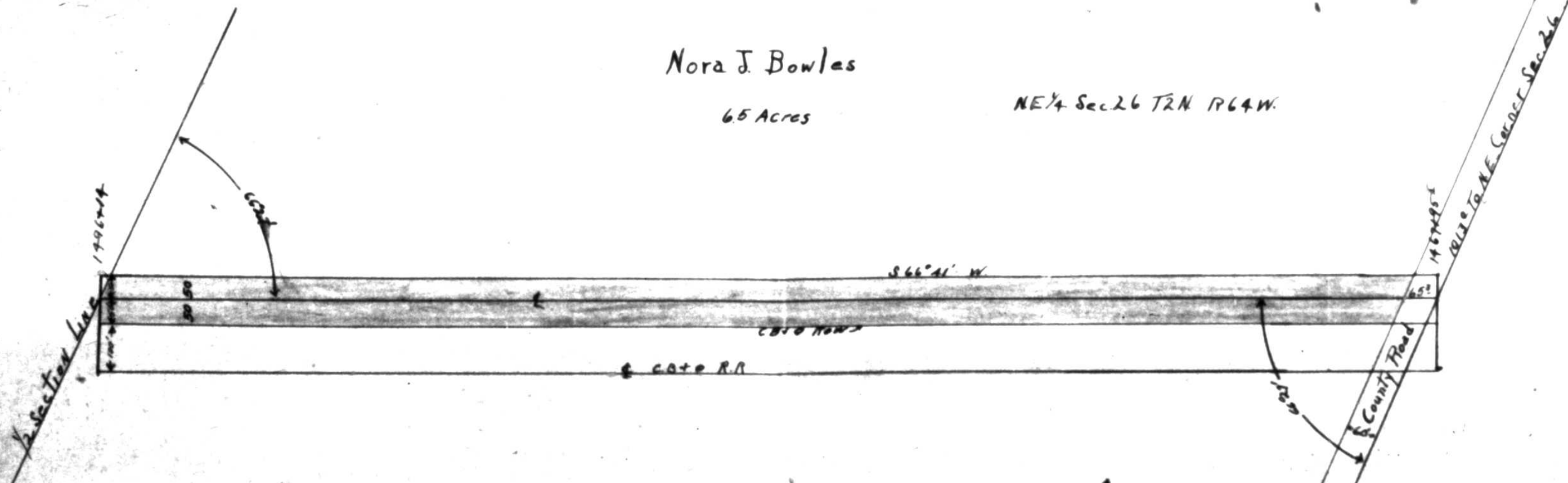


NW $\frac{1}{4}$ Sec 20 T2N 64W

Nora J. Bowles

6.5 Acres

NE 1/4 Sec. 26 T2N R64W.



Robert A. McBride
0.95 Acres

SW $\frac{1}{4}$ -NW $\frac{1}{4}$ Sec 26
T2N R64W

T2N R64W
SEC 26

N85°19'W

$\frac{1}{2}$ Section Line

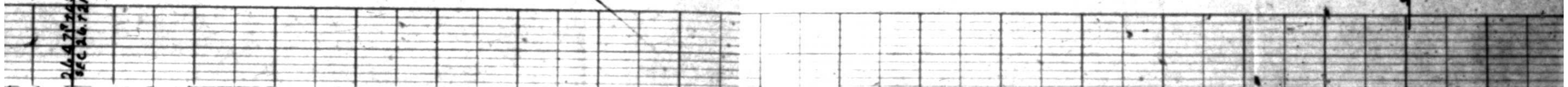
old County Road

Co Road

100' x 150' 1/2
A-100' x 150' 1/2

Property Line

100' x 150' 1/2
A-100' x 150' 1/2



R.C. Peppers
2.85 Acres

NE 1/4 SEC 28 T2N-R64W

N89° 33' W

1/4 Sec Line
Ch. 1500000

1/4 Sec Line
Ch. 1500000
2669' To SE Cor
Sec 28-T2N-R64W

CB-O RR 7

CB-O ROW Line 7

John E. Pointer
0.0204 Acres

Sta 997+92.2

100'

80'

100'±

139'± To 4 Cor

Story St.

B 2
1st Addition
Roggen

N 1/4 Sec 6 T2N R62W

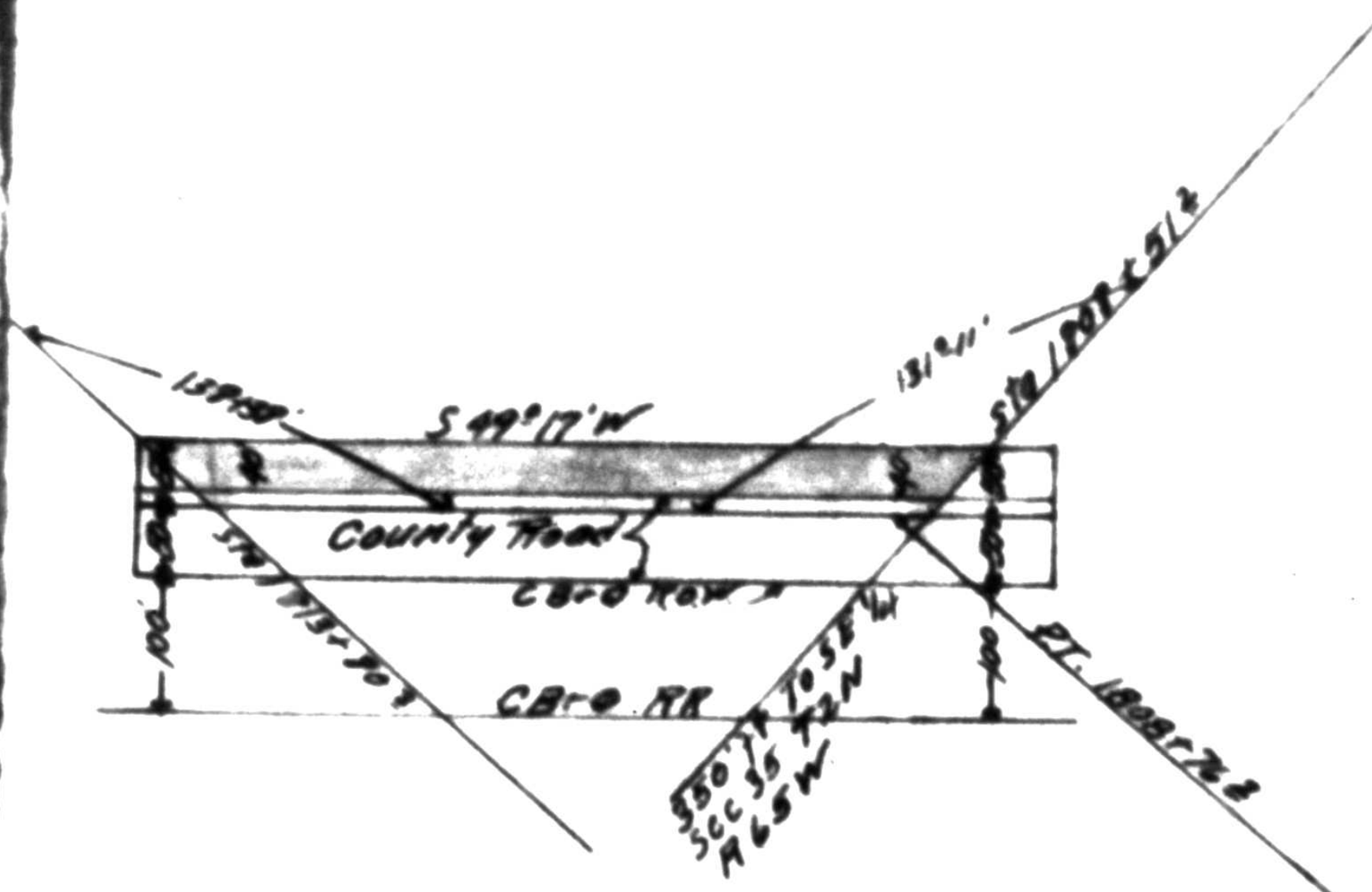
NO. 39' 258295'±
NE Cor Sec 1 T2N R62W

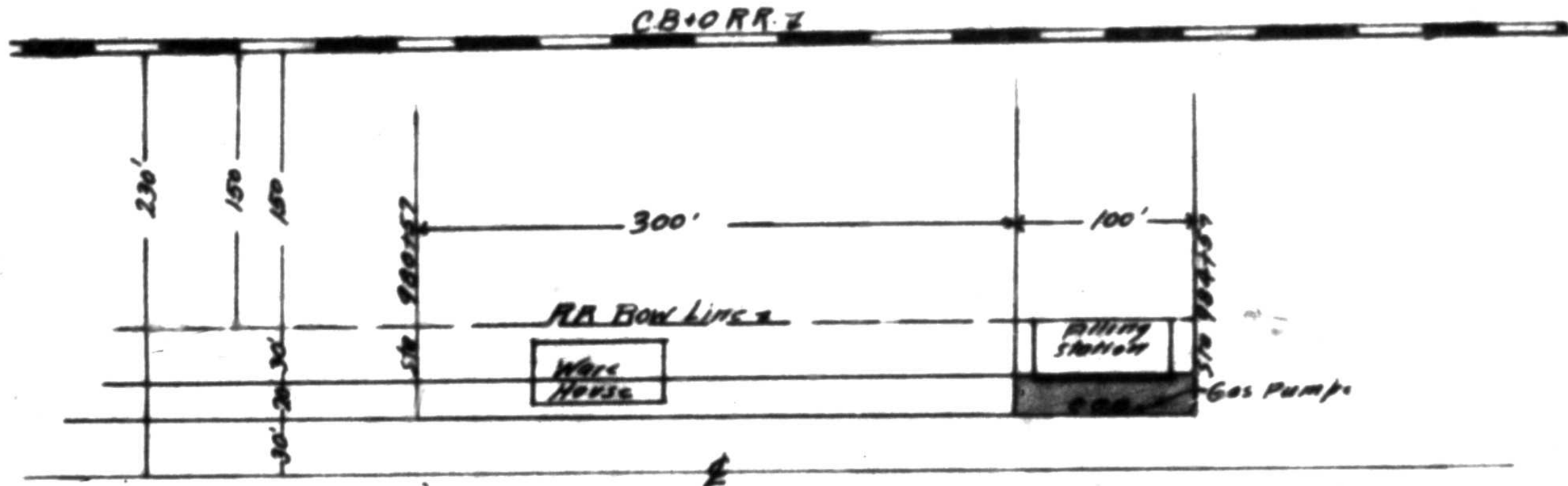
NO CH 1/4

Faternal Aid Union

0.5 Acres

SW 1/4 Sec 35
T2N R65W





Burlington St.

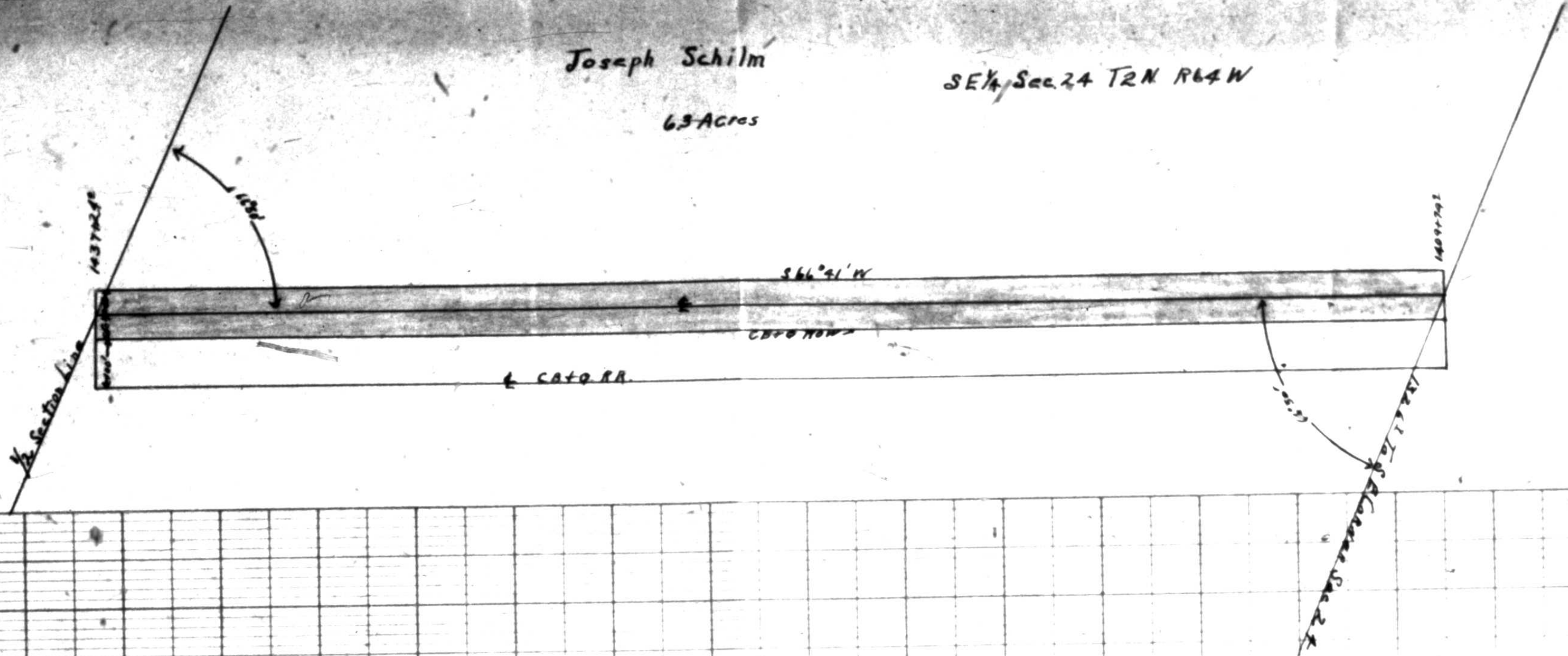
B1
 J.A. COOKSEY
 0.046 Acres
 P099011
 NW 1/4 SEC 6
 T2N R62W

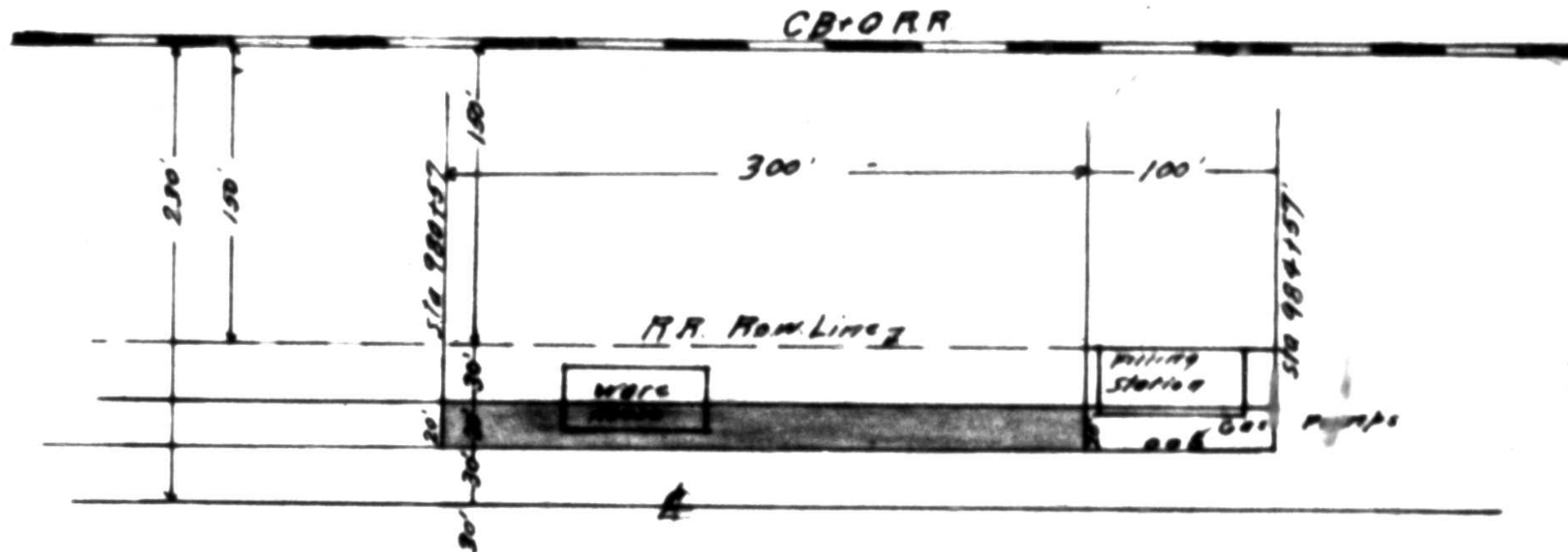
Harrison St.

Joseph Schilm

6.3 Acres

SE 1/4 Sec. 24 T2N R64W



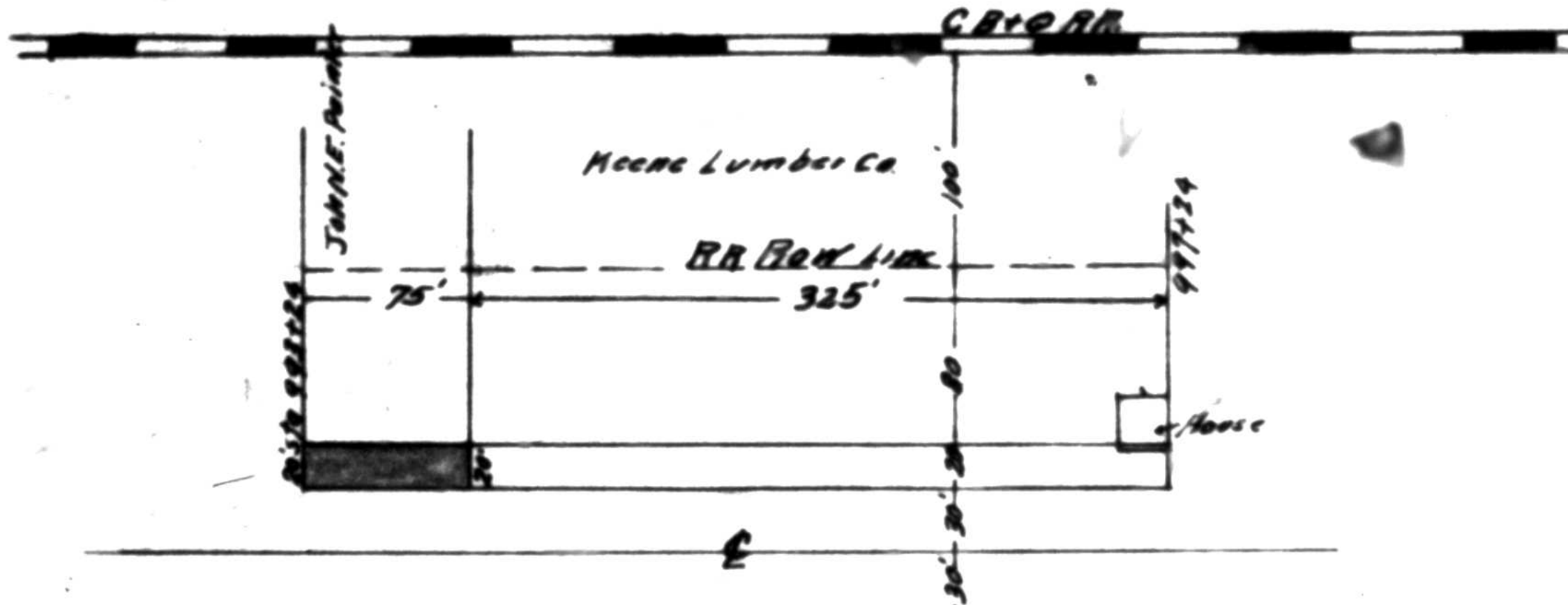


B1

Denver Elevator Co
 0.138 Acres
 Hoggen
 NW 1/4 Sec 6
 T2N - R62W

Burlington St

Harrison St



NW 1/4 Sec 6
T2N R62W

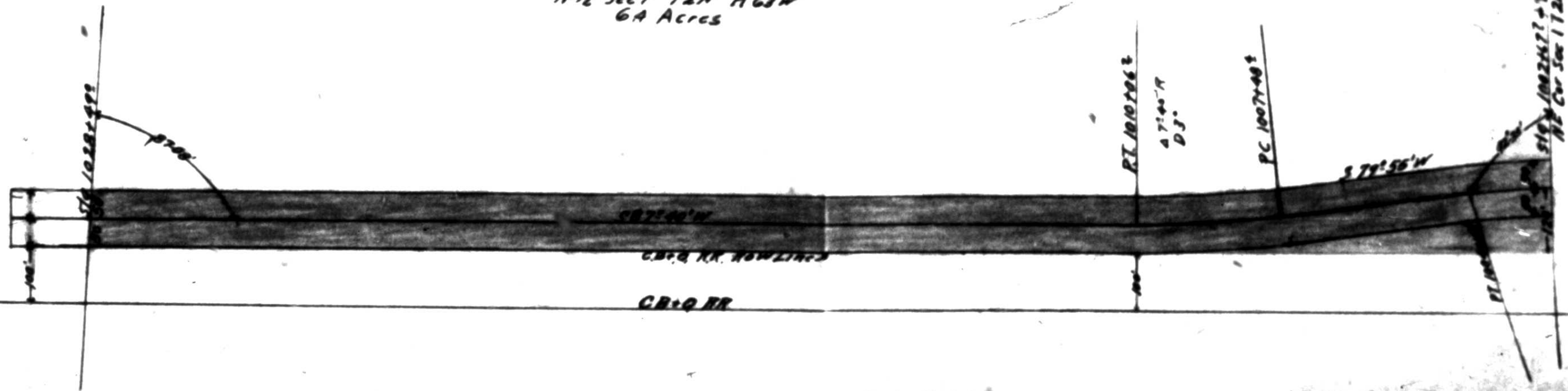
Dye St

B 1
Bogg's Addition
Roggen

John E. Painter
0.035 Acres

Story St

John E Painter & Sons
N 1/2 Sec 1 T2N R6W
64 Acres



S 76° 10' 28" E 99' 10"

579.55' W

587.40' W

CR & Q RR

CR & Q RR

RT 100.74' N

47.40' N
DJ

PC 100.74' N

S 79° 55' W

S 19° 10' 25.7" E 93.023' W
N 1/2 Sec 1 T2N R6W

PL 100.74' N

Painter Bros. Stock Co
80-A
2.9 Acres

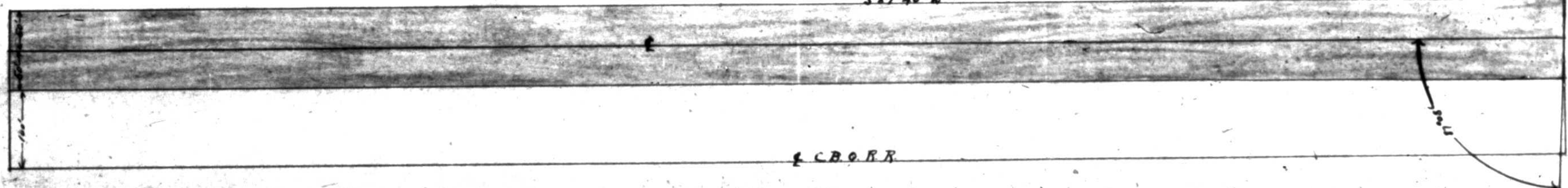
NE 1/4 - S. E 1/4 Sec 2
T2N R63W

1068437 e

S 87° 40' W

C.B.O.R.R.

1068437 e
NE 1/4 - S. E 1/4 Sec 2



11802710
SW 1/4 Sec 2
T2N R63W

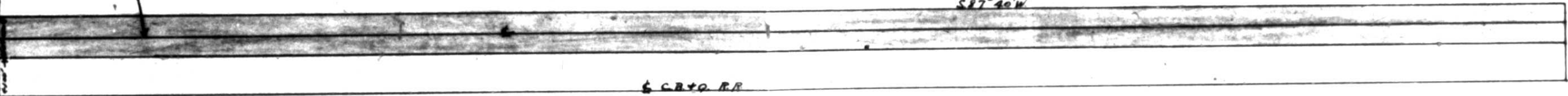
State Land
9.3 Acres

NW 1/4 - SE 1/4 Sec 2 T2N R63W
SW 1/4 Sec 2 T2N R63W

S87°40'W

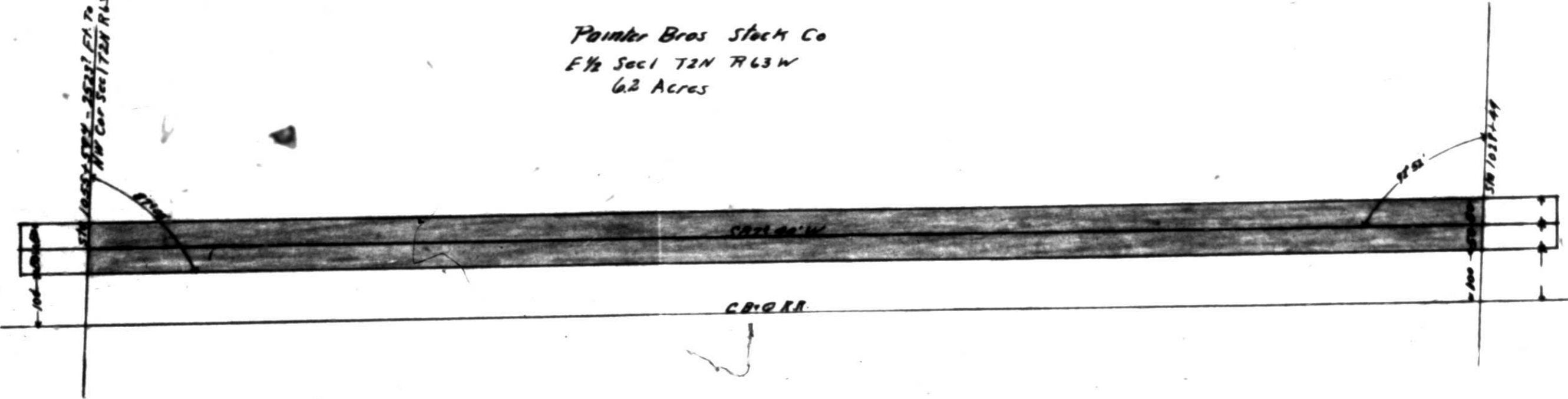
6 CB+O RR

11802710



Painter Bros Stock Co
E 1/2 Sec 1 T2N R63W
6.2 Acres

5th 1000' STN - 2500' EA TO
NW Cor Sec 1 T2N R63W



BY	DATE

Oscar Bergund
106 Acres

W $\frac{1}{2}$ Sec. 9
T21-R63W.

← RR

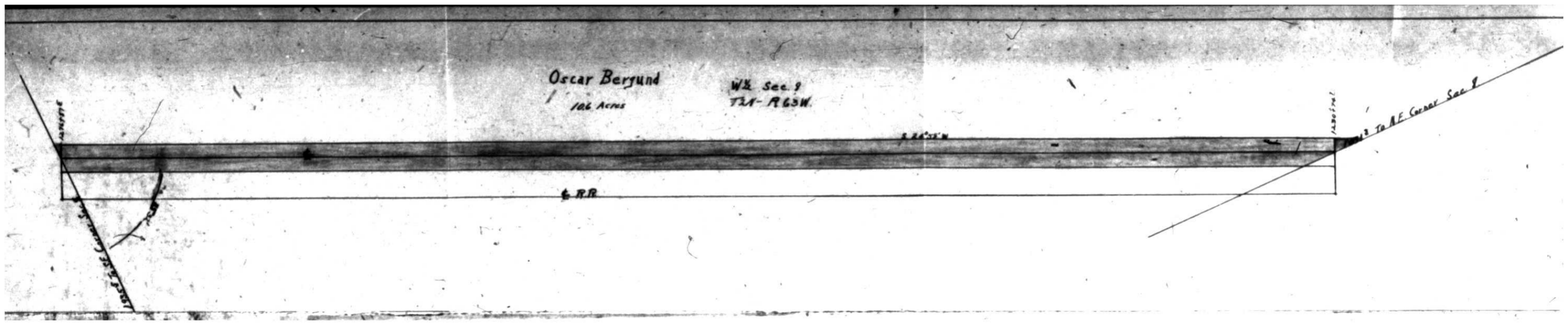
S 24° 32' W

1230 ft 1/2

To N.E. Corner Sec. 9

1230 ft 1/2

1230 ft 1/2



19

Jessie Quigley
61 Acres

66° 30'

CA. O. RR

Sta 1409.75

Sta 1507.50

1926