

COLORADO STATE HIGHWAY DEPARTMENT PLAN AND PROFILE OF PROPOSED FEDERAL AID PROJECT NO. 287 C STATE HIGHWAY NO. 2 WELD COUNTY

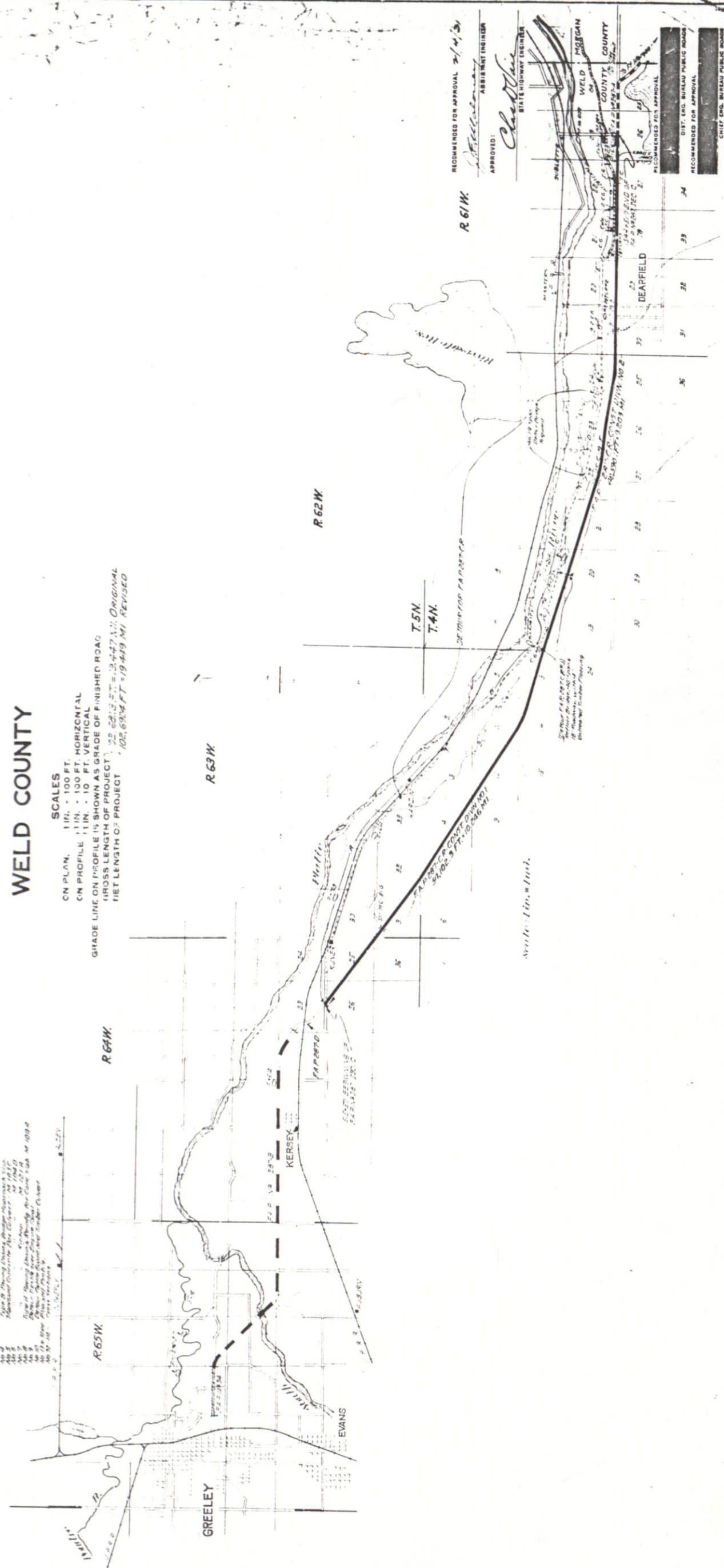
INDEX OF SHEETS

287 C-1	287 C-2	287 C-3	287 C-4	287 C-5	287 C-6	287 C-7	287 C-8	287 C-9	287 C-10	287 C-11	287 C-12	287 C-13	287 C-14	287 C-15	287 C-16	287 C-17	287 C-18	287 C-19	287 C-20	287 C-21	287 C-22	287 C-23	287 C-24	287 C-25	287 C-26	287 C-27	287 C-28	287 C-29	287 C-30	287 C-31	287 C-32	287 C-33	287 C-34	287 C-35	287 C-36	287 C-37	287 C-38	287 C-39	287 C-40	287 C-41	287 C-42	287 C-43	287 C-44	287 C-45	287 C-46	287 C-47	287 C-48	287 C-49	287 C-50	287 C-51	287 C-52	287 C-53	287 C-54	287 C-55	287 C-56	287 C-57	287 C-58	287 C-59	287 C-60	287 C-61	287 C-62	287 C-63	287 C-64	287 C-65	287 C-66	287 C-67	287 C-68	287 C-69	287 C-70	287 C-71	287 C-72	287 C-73	287 C-74	287 C-75	287 C-76	287 C-77	287 C-78	287 C-79	287 C-80	287 C-81	287 C-82	287 C-83	287 C-84	287 C-85	287 C-86	287 C-87	287 C-88	287 C-89	287 C-90	287 C-91	287 C-92	287 C-93	287 C-94	287 C-95	287 C-96	287 C-97	287 C-98	287 C-99	287 C-100
---------	---------	---------	---------	---------	---------	---------	---------	---------	----------	----------	----------	----------	----------	----------	----------	----------	----------	----------	----------	----------	----------	----------	----------	----------	----------	----------	----------	----------	----------	----------	----------	----------	----------	----------	----------	----------	----------	----------	----------	----------	----------	----------	----------	----------	----------	----------	----------	----------	----------	----------	----------	----------	----------	----------	----------	----------	----------	----------	----------	----------	----------	----------	----------	----------	----------	----------	----------	----------	----------	----------	----------	----------	----------	----------	----------	----------	----------	----------	----------	----------	----------	----------	----------	----------	----------	----------	----------	----------	----------	----------	----------	----------	----------	----------	----------	----------	----------	----------	-----------

287 C-101
 287 C-102
 287 C-103
 287 C-104
 287 C-105
 287 C-106
 287 C-107
 287 C-108
 287 C-109
 287 C-110
 287 C-111
 287 C-112
 287 C-113
 287 C-114
 287 C-115
 287 C-116
 287 C-117
 287 C-118
 287 C-119
 287 C-120
 287 C-121
 287 C-122
 287 C-123
 287 C-124
 287 C-125
 287 C-126
 287 C-127
 287 C-128
 287 C-129
 287 C-130
 287 C-131
 287 C-132
 287 C-133
 287 C-134
 287 C-135
 287 C-136
 287 C-137
 287 C-138
 287 C-139
 287 C-140
 287 C-141
 287 C-142
 287 C-143
 287 C-144
 287 C-145
 287 C-146
 287 C-147
 287 C-148
 287 C-149
 287 C-150
 287 C-151
 287 C-152
 287 C-153
 287 C-154
 287 C-155
 287 C-156
 287 C-157
 287 C-158
 287 C-159
 287 C-160
 287 C-161
 287 C-162
 287 C-163
 287 C-164
 287 C-165
 287 C-166
 287 C-167
 287 C-168
 287 C-169
 287 C-170
 287 C-171
 287 C-172
 287 C-173
 287 C-174
 287 C-175
 287 C-176
 287 C-177
 287 C-178
 287 C-179
 287 C-180
 287 C-181
 287 C-182
 287 C-183
 287 C-184
 287 C-185
 287 C-186
 287 C-187
 287 C-188
 287 C-189
 287 C-190
 287 C-191
 287 C-192
 287 C-193
 287 C-194
 287 C-195
 287 C-196
 287 C-197
 287 C-198
 287 C-199
 287 C-200

CONVENTIONAL SIGNS

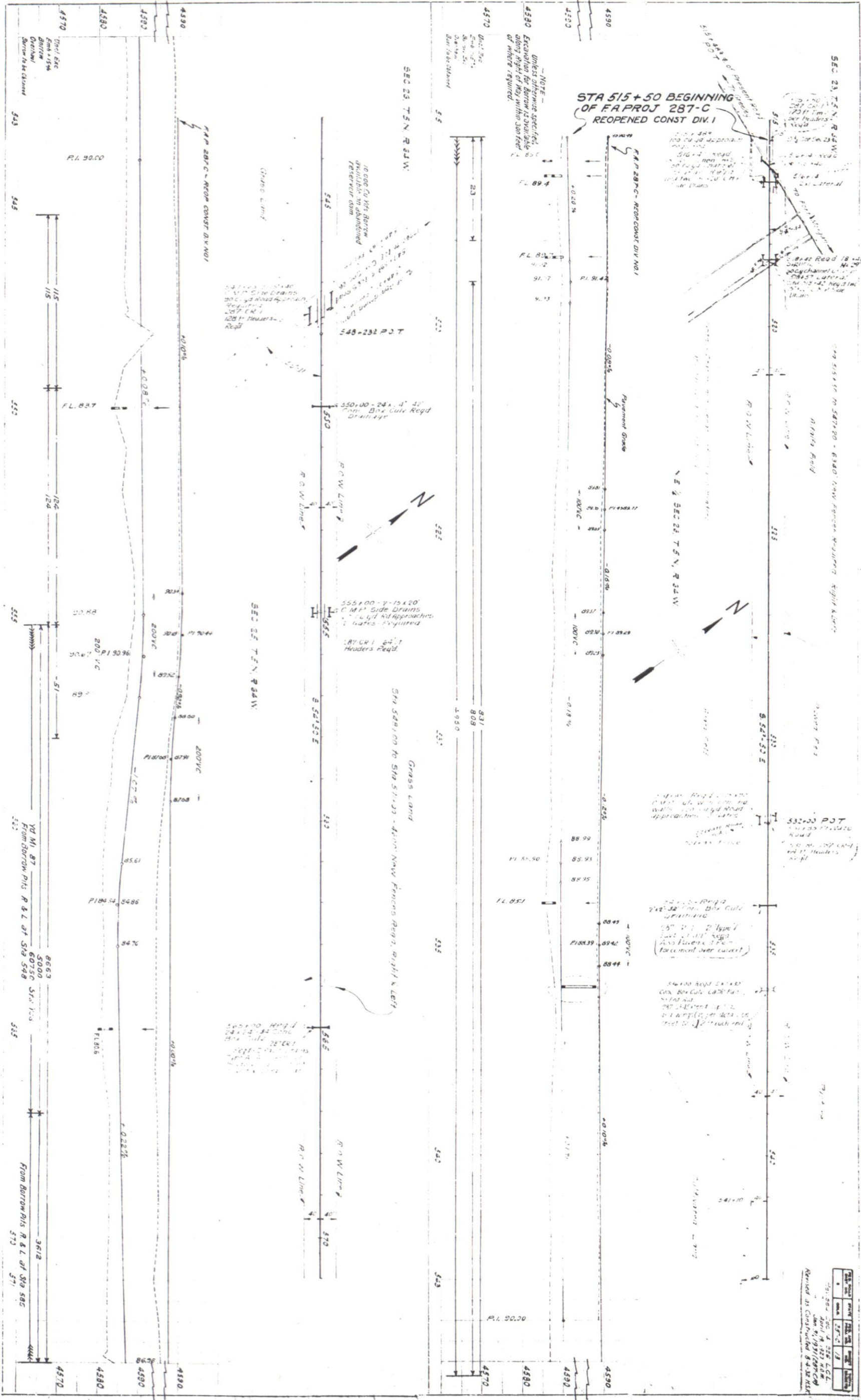
SCALES
 CN PLAN: 1 IN. = 100 FT.
 CN PROFILE: 1 IN. = 100 FT. HORIZONTAL
 1 IN. = 10 FT. VERTICAL
 GRADE LINE ON PROFILE IS SHOWN AS GRADE OF FINISHED ROAD
 GROSS LENGTH OF PROJECT: 25,623.77' = 3+47.11 MI. ORIGINAL
 NET LENGTH OF PROJECT: 105,694 FT. = 19+41.9 MI. REVISED



RECOMMENDED FOR APPROVAL 7/1/51
 ASSISTANT ENGINEER
 APPROVED: *Chadler*
 STATE HIGHWAY ENGINEER
 WELD COUNTY
 DEERFIELD
 RECOMMENDED FOR APPROVAL
 DIST. ENGR. BUREAU PUBLIC WORKS
 RECOMMENDED FOR APPROVAL
 CHIEF ENGR. BUREAU PUBLIC WORKS
 APPROVED
 DIRECTOR BUREAU PUBLIC WORKS

PROFILE	DATE	BY	CHKD
NO. 433		L.C. Lemo	Apr. 11/4

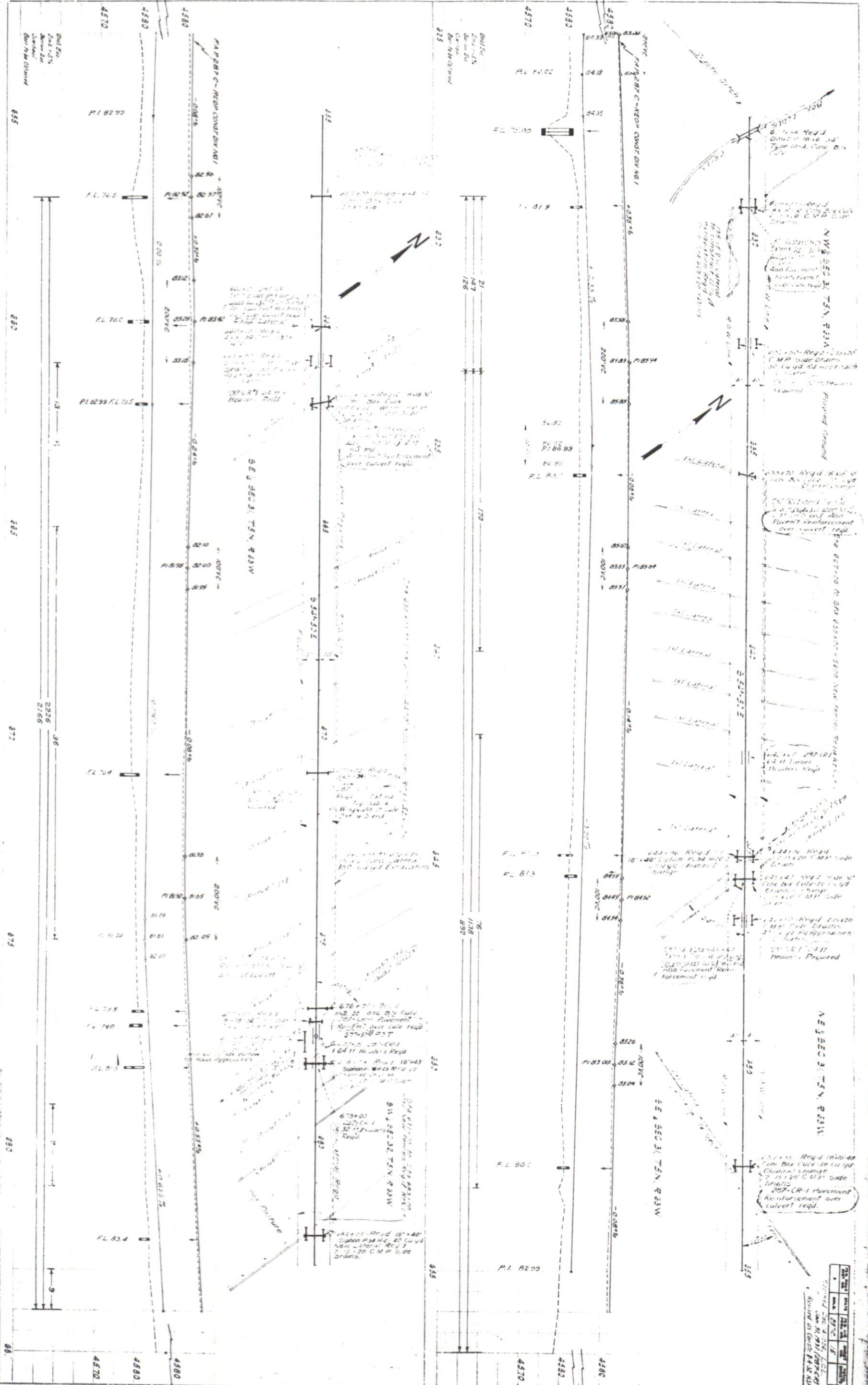
PLAN	DATE	BY	CHKD
NO. 432		L.C. Lemo	Apr. 11/4



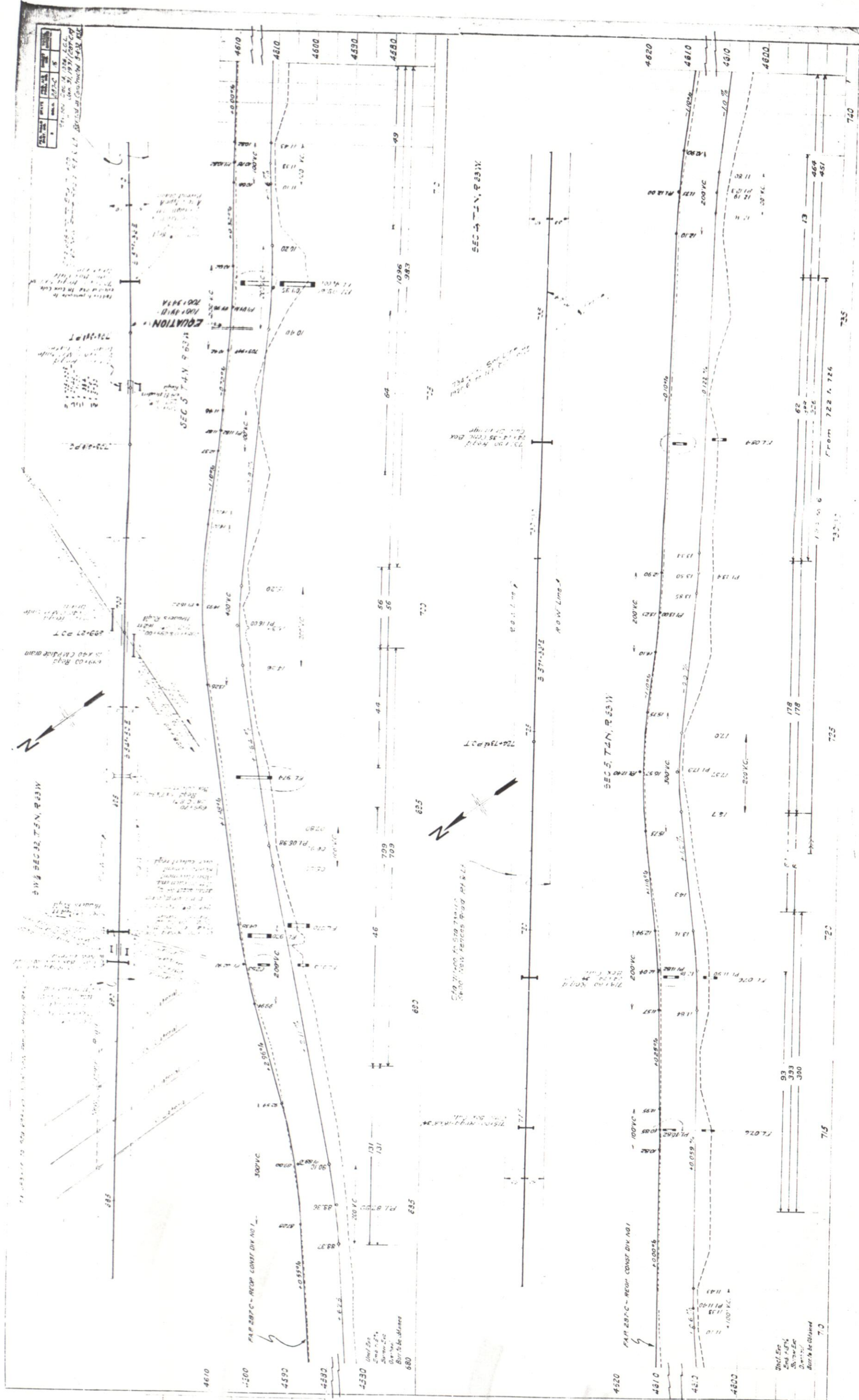
DATE	BY	CHKD
APR 11 1944	L.C. Lemo	Apr 11/4

PROFILE	
433	

PLAN	
432	

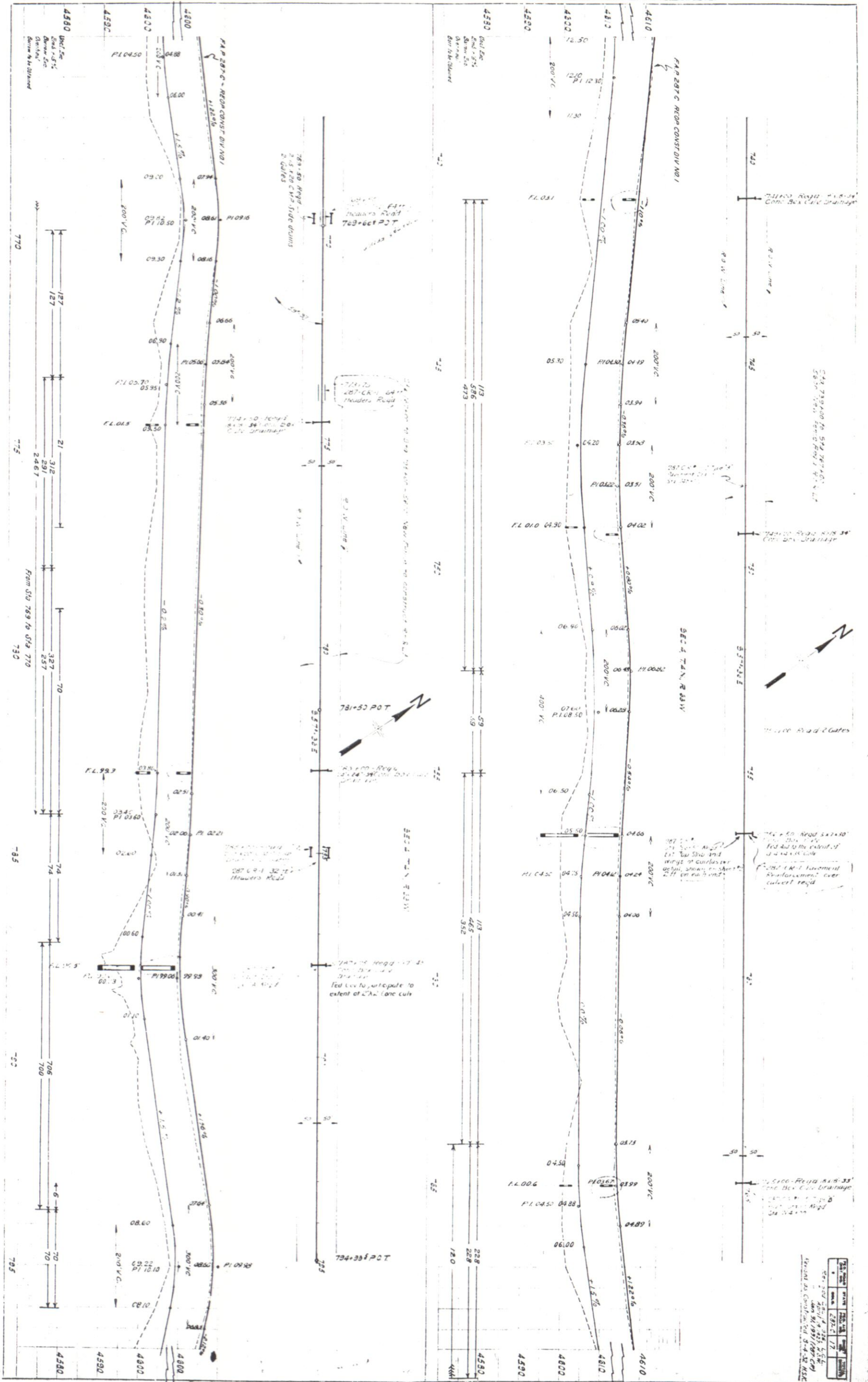


1. ALL CONCRETE SHALL BE 4000 PSI
 2. ALL CONCRETE SHALL BE REINFORCED
 3. ALL CONCRETE SHALL BE CURED
 4. ALL CONCRETE SHALL BE FINISHED
 5. ALL CONCRETE SHALL BE PAINTED
 6. ALL CONCRETE SHALL BE MAINTAINED
 7. ALL CONCRETE SHALL BE REPAIRED
 8. ALL CONCRETE SHALL BE REPLACED
 9. ALL CONCRETE SHALL BE DEMOLISHED
 10. ALL CONCRETE SHALL BE EXCAVATED



PROFILE	
DATE	11/11/54
NO.	1432
BY	E. C. Ham, Fan
CHECKED	C. L. Camp

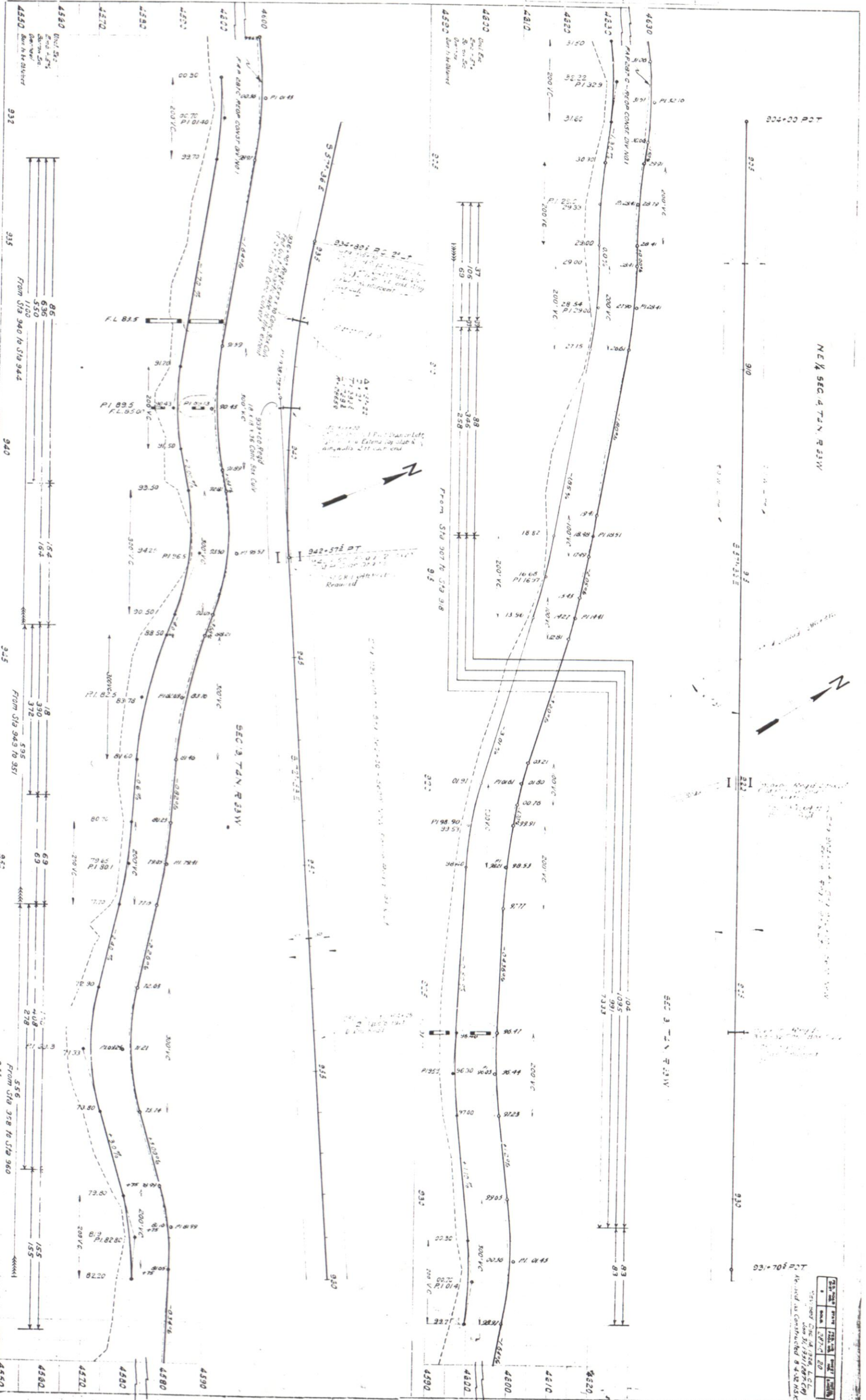
PLAN	
DATE	11/11/54
NO.	1432
BY	E. C. Ham, Fan
CHECKED	C. L. Camp



DATE	BY	CHECKED
11/11/54	E. C. Ham	C. L. Camp
11/11/54	E. C. Ham	C. L. Camp
11/11/54	E. C. Ham	C. L. Camp

PROFILE	
NO. 1436	DATE 10/20/50

PLAN	
NO. 1432	DATE 10/20/50



NEW SEC. 4 T4N. R. 33W

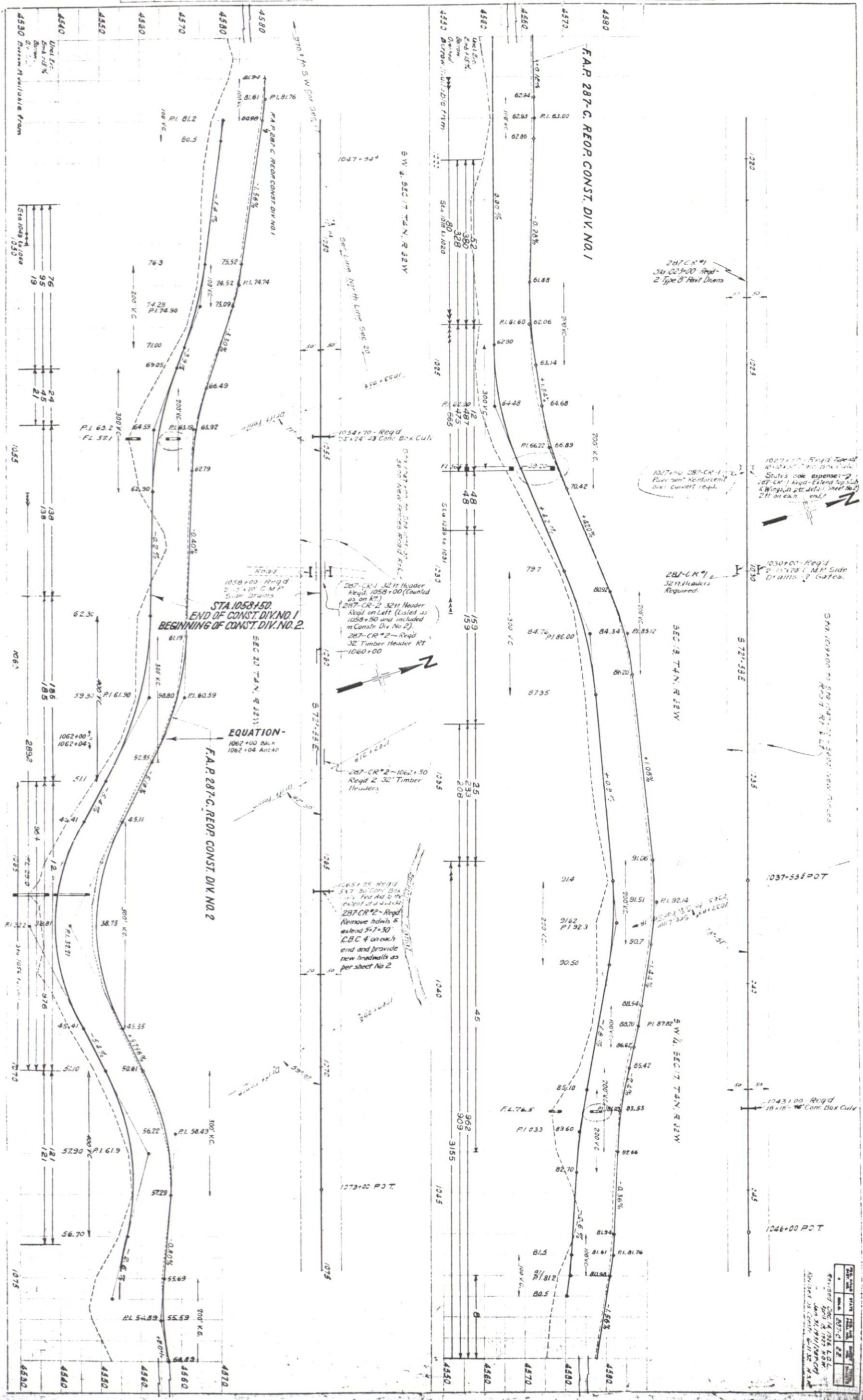
SEC. 3 T4N. R. 33W

DATE	10/20/50
BY	W. J. [unclear]
CHECKED	[unclear]
APPROVED	[unclear]

APPROVED FOR CONSTRUCTION BY [unclear]

PROFILE	DATE	BY	CHECKED
NO. 434	10/11/50	E. C. Hamlin	10/11/50

PLAN	DATE	BY	CHECKED
NO. 432	10/11/50	E. C. Hamlin	10/11/50



STA. 1058+50
END OF CONST. DIV. NO. 1
BEGINNING OF CONST. DIV. NO. 2

EQUATION-
1062+00 BAL. A
1062+04 AHEAD

F.A.P. 287-C, REOP CONST. DIV. NO. 2

287-CR-1 32" Header
Reqd. 1058+00 (Counted
as on RT.)
287-CR-2 32" Header
Reqd. on Left (Listed as
1058+50 and included
in Const. Div. No. 2)
287-CR-2-Reqd
32" Timber Header RT
1060+00

287-CR-2-1062+50
Reqd. 2 32" Timber
Headers

1065+75 Reqd.
54" 30" Conc. Box
Cul. to be
extended 7'-7" to
287-CR-2-Reqd.
Remove hdms &
extend 7'-7" to
C.B.C. 4 on each
end and provide
new headwalls as
per sheet No. 2

287-CR-1
34" 22" 00 Reqd.
2 Type B Vent Decks

1027+00 287-CR-1
Reinforcement
over culvert reqd.

287-CR-1
32" Headers
Required

1030+00 Reqd.
2 18" 18" C.M.P. Side
Drains & Gates

Sta. 1031+00 to Sta. 1047+00 - 300' New Grades

1037+53 007

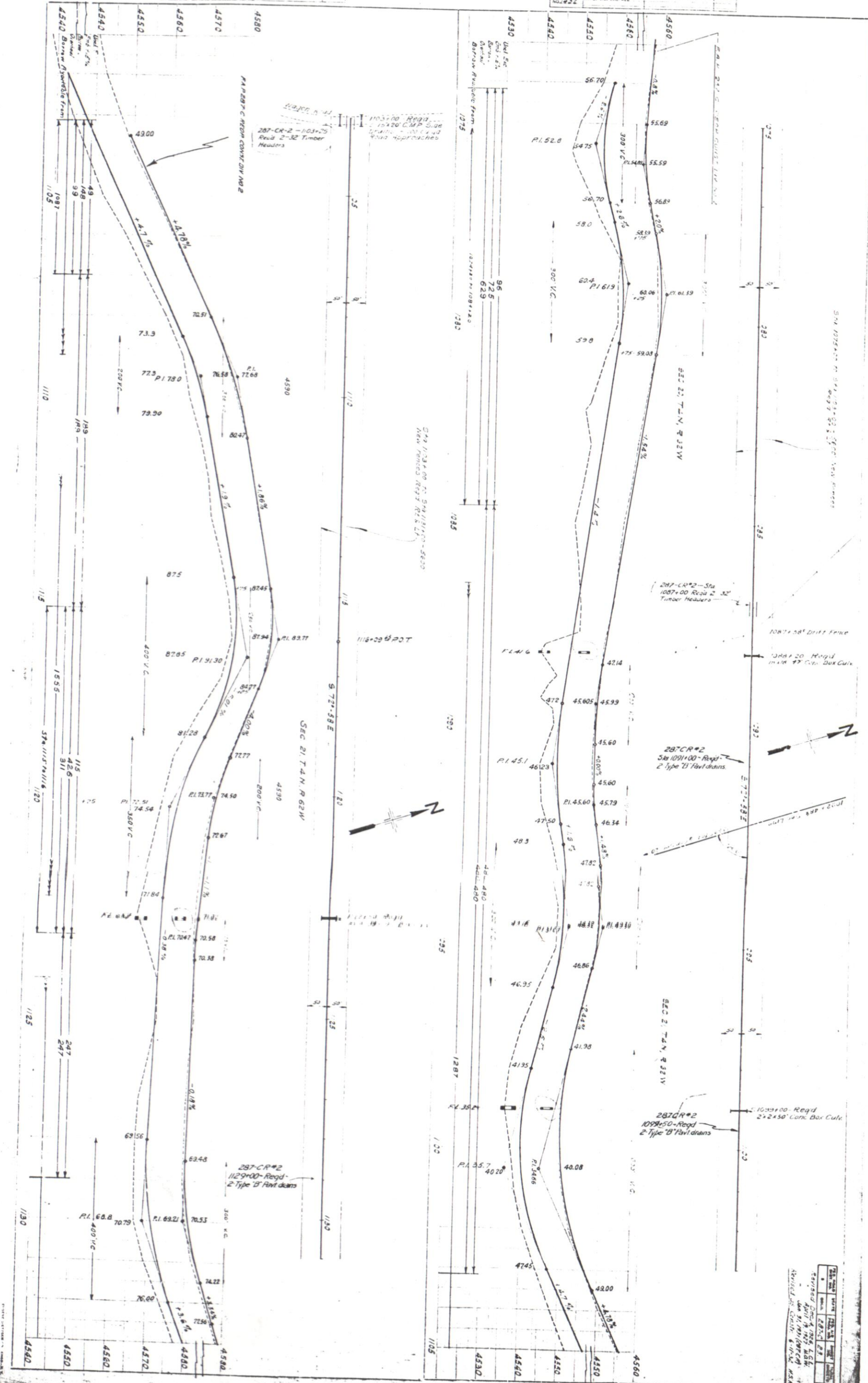
1043+00 Reqd.
18" 18" 18" Conc. Box Culv

1046+00 P.O.T.

DATE	BY	REVISION
10/11/50	E. C. Hamlin	10/11/50
10/11/50	E. C. Hamlin	10/11/50

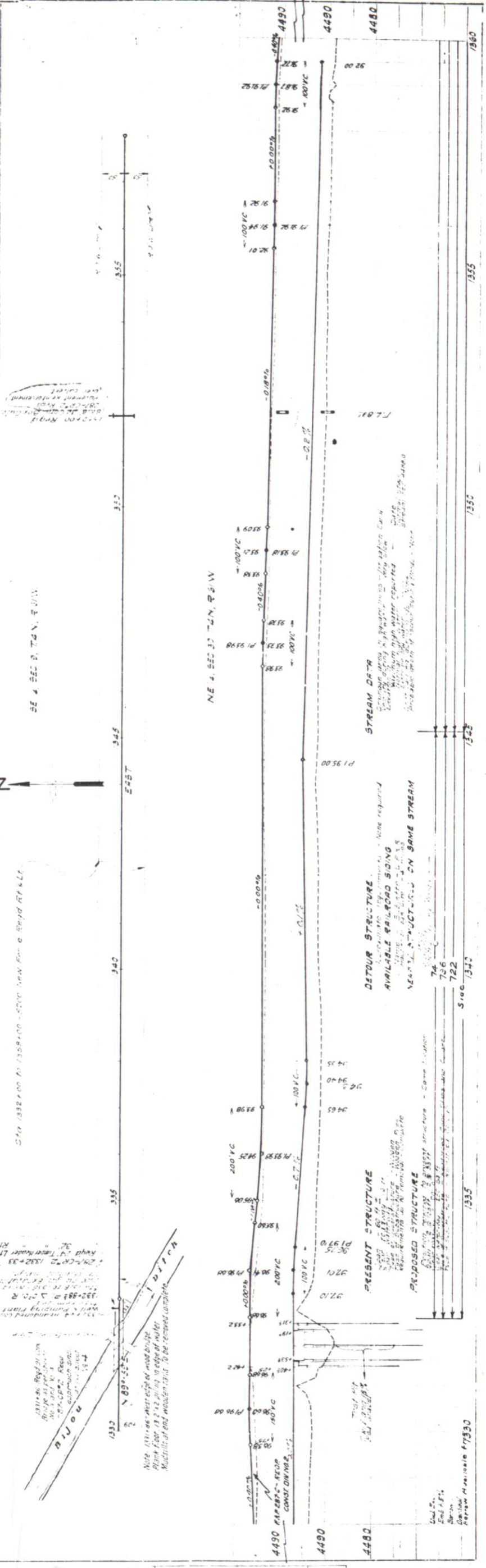
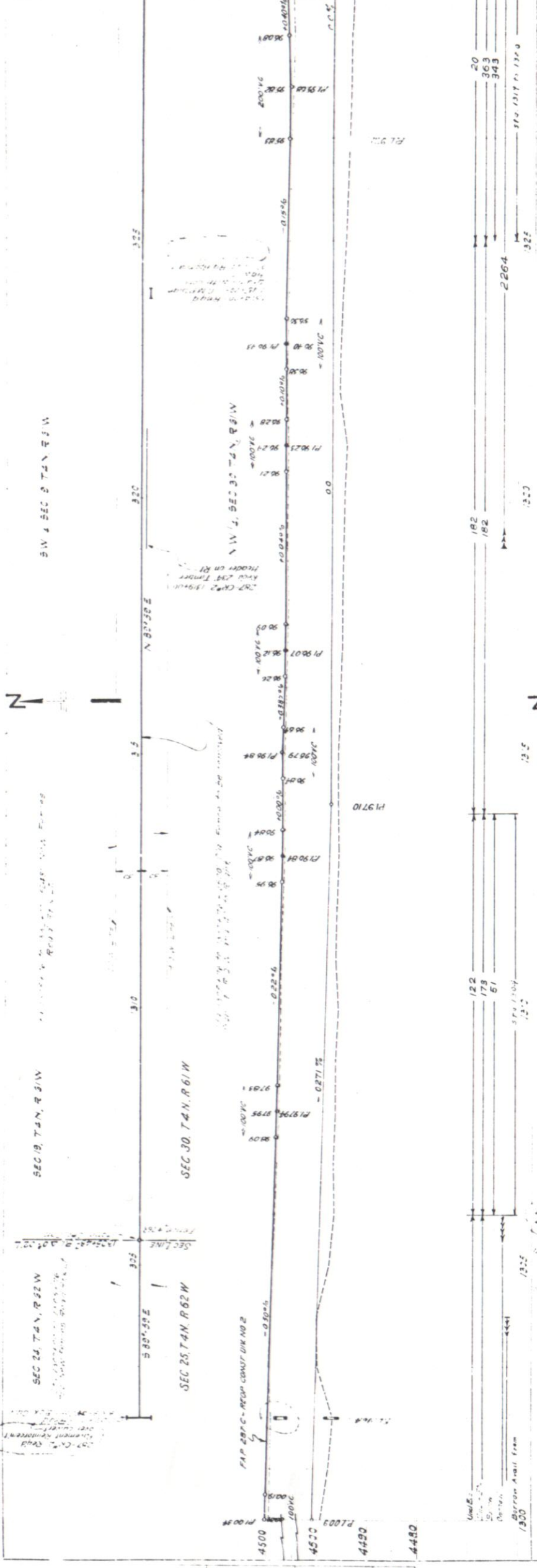
PROFILE		BY	DATE
NOTE BOOK	NO. 432	E. C. Hamilton	April 1915
PROJECT		C. C. Lamb	April 1915
SCALE			

PLAN		BY	DATE
NOTE BOOK	NO. 432	E. C. Hamilton	April 1915
PROJECT		C. C. Lamb	April 1915
SCALE			



NO.	DATE	DESCRIPTION
1	APR 1915	DESIGNED BY E. C. HAMILTON
2	APR 1915	CHECKED BY C. C. LAMB
3	APR 1915	APPROVED BY E. C. HAMILTON
4	APR 1915	APPROVED BY C. C. LAMB

DATE	12-15-50
BY	J. H. ...
CHECKED	...
APPROVED	...

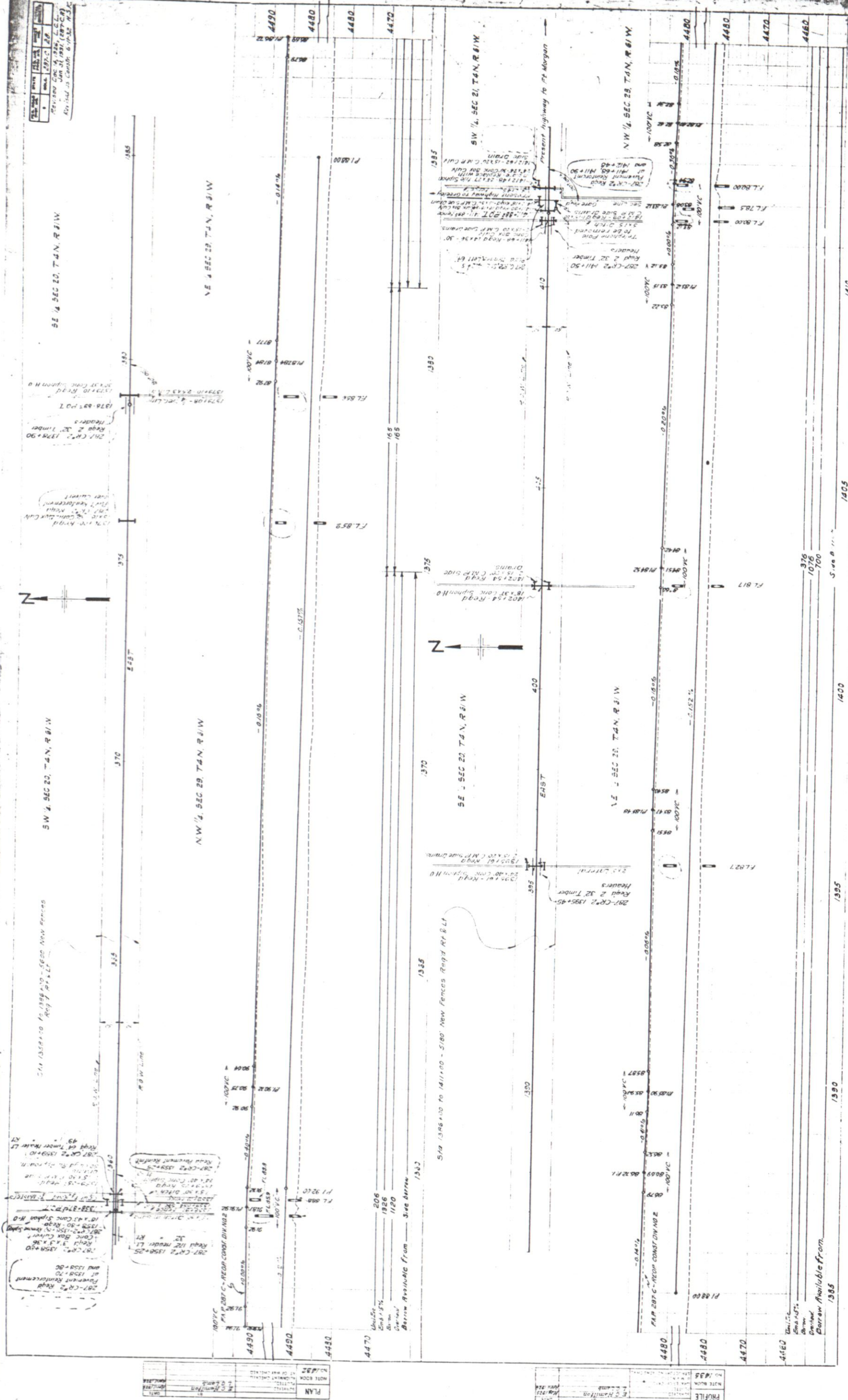


DATE	12-15-50
BY	J. H. ...
CHECKED	...
APPROVED	...

DATE	12-15-50
BY	J. H. ...
CHECKED	...
APPROVED	...

DATE	12-15-50
BY	J. H. ...
CHECKED	...
APPROVED	...

DATE	NO.	BY	REVISION
1935	1	J. S. HARRIS	PREPARED
1935	2	J. S. HARRIS	REVISED
1935	3	J. S. HARRIS	REVISED
1935	4	J. S. HARRIS	REVISED



NO.	DATE	BY	REVISION
1	1935	J. S. HARRIS	PREPARED
2	1935	J. S. HARRIS	REVISED
3	1935	J. S. HARRIS	REVISED
4	1935	J. S. HARRIS	REVISED

NO.	DATE	BY	REVISION
1	1935	J. S. HARRIS	PREPARED
2	1935	J. S. HARRIS	REVISED
3	1935	J. S. HARRIS	REVISED
4	1935	J. S. HARRIS	REVISED

Barrow Available from
1385

1390

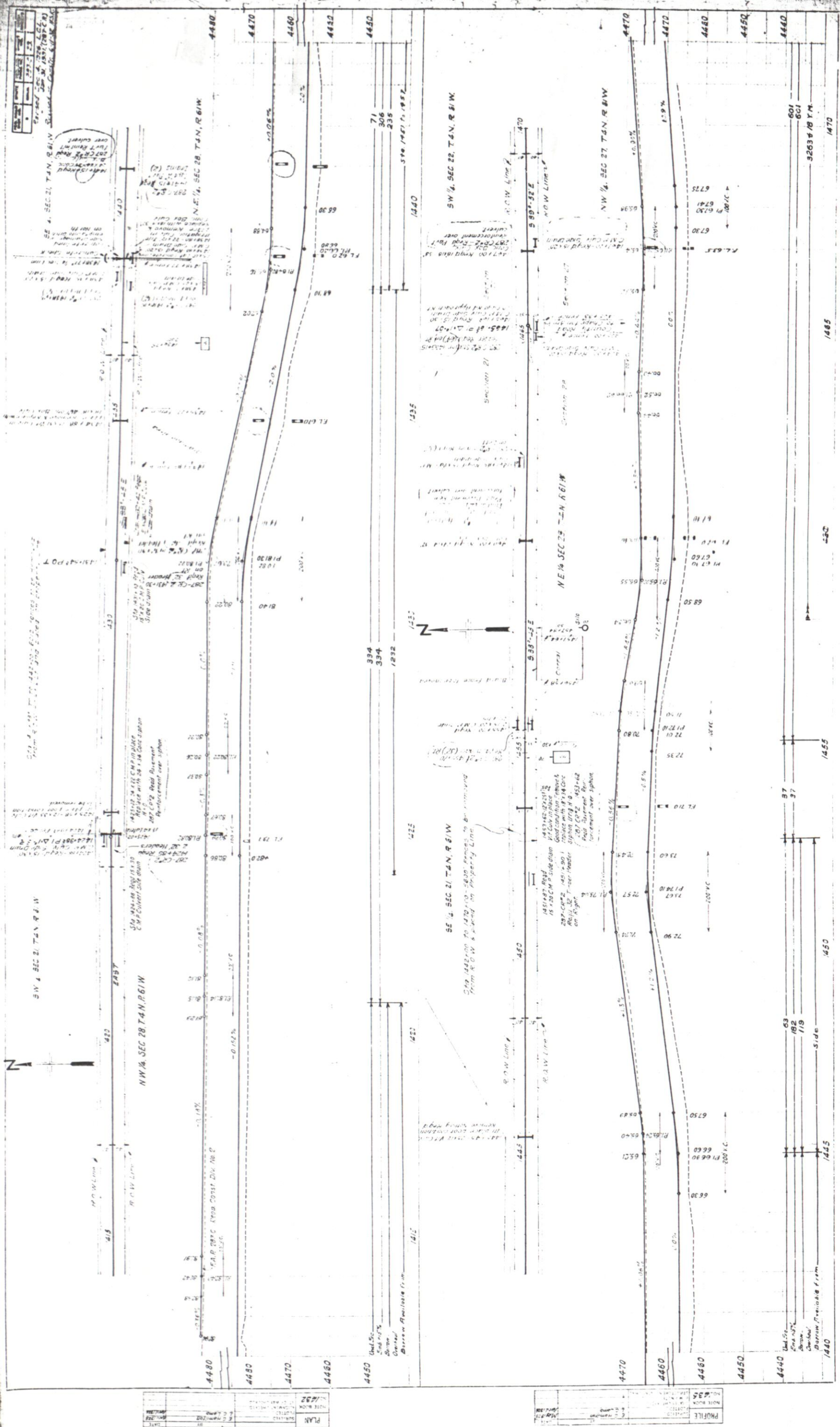
1395

1400

1405

1410

1415



STATION	PROPOSED GRADE	EXISTING GRADE	REMARKS
4480	66.30	66.30	
4485	66.60	66.60	
4490	66.90	66.90	
4495	67.20	67.20	
4500	67.50	67.50	
4505	67.80	67.80	
4510	68.10	68.10	
4515	68.40	68.40	
4520	68.70	68.70	
4525	69.00	69.00	
4530	69.30	69.30	
4535	69.60	69.60	
4540	69.90	69.90	
4545	70.20	70.20	
4550	70.50	70.50	
4555	70.80	70.80	
4560	71.10	71.10	
4565	71.40	71.40	
4570	71.70	71.70	
4575	72.00	72.00	
4580	72.30	72.30	
4585	72.60	72.60	
4590	72.90	72.90	
4595	73.20	73.20	
4600	73.50	73.50	
4605	73.80	73.80	
4610	74.10	74.10	
4615	74.40	74.40	
4620	74.70	74.70	
4625	75.00	75.00	
4630	75.30	75.30	
4635	75.60	75.60	
4640	75.90	75.90	
4645	76.20	76.20	
4650	76.50	76.50	
4655	76.80	76.80	
4660	77.10	77.10	
4665	77.40	77.40	
4670	77.70	77.70	
4675	78.00	78.00	
4680	78.30	78.30	
4685	78.60	78.60	
4690	78.90	78.90	
4695	79.20	79.20	
4700	79.50	79.50	
4705	79.80	79.80	
4710	80.10	80.10	
4715	80.40	80.40	
4720	80.70	80.70	
4725	81.00	81.00	
4730	81.30	81.30	
4735	81.60	81.60	
4740	81.90	81.90	
4745	82.20	82.20	
4750	82.50	82.50	
4755	82.80	82.80	
4760	83.10	83.10	
4765	83.40	83.40	
4770	83.70	83.70	
4775	84.00	84.00	
4780	84.30	84.30	
4785	84.60	84.60	
4790	84.90	84.90	
4795	85.20	85.20	
4800	85.50	85.50	
4805	85.80	85.80	
4810	86.10	86.10	
4815	86.40	86.40	
4820	86.70	86.70	
4825	87.00	87.00	
4830	87.30	87.30	
4835	87.60	87.60	
4840	87.90	87.90	
4845	88.20	88.20	
4850	88.50	88.50	
4855	88.80	88.80	
4860	89.10	89.10	
4865	89.40	89.40	
4870	89.70	89.70	
4875	90.00	90.00	
4880	90.30	90.30	
4885	90.60	90.60	
4890	90.90	90.90	
4895	91.20	91.20	
4900	91.50	91.50	
4905	91.80	91.80	
4910	92.10	92.10	
4915	92.40	92.40	
4920	92.70	92.70	
4925	93.00	93.00	
4930	93.30	93.30	
4935	93.60	93.60	
4940	93.90	93.90	
4945	94.20	94.20	
4950	94.50	94.50	
4955	94.80	94.80	
4960	95.10	95.10	
4965	95.40	95.40	
4970	95.70	95.70	
4975	96.00	96.00	
4980	96.30	96.30	
4985	96.60	96.60	
4990	96.90	96.90	
4995	97.20	97.20	
5000	97.50	97.50	

