

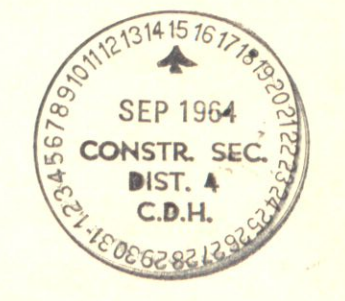
FED. ROAD DIST. NO.	STATE	F. A. P. PROJ. NO.	SHEET NO.	TOTAL SHEETS
3	COLO.	9-R-5	1	

COLORADO STATE HIGHWAY DEPARTMENT

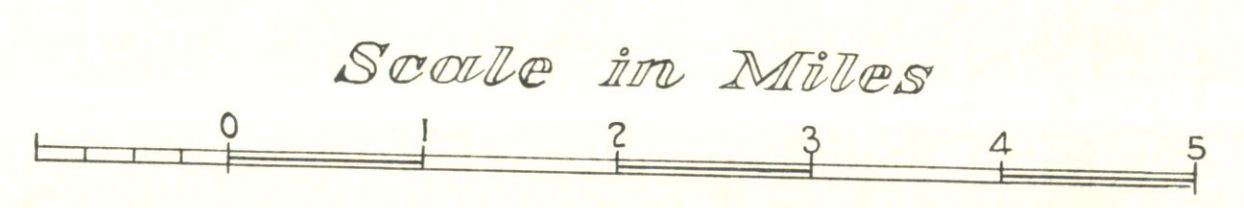
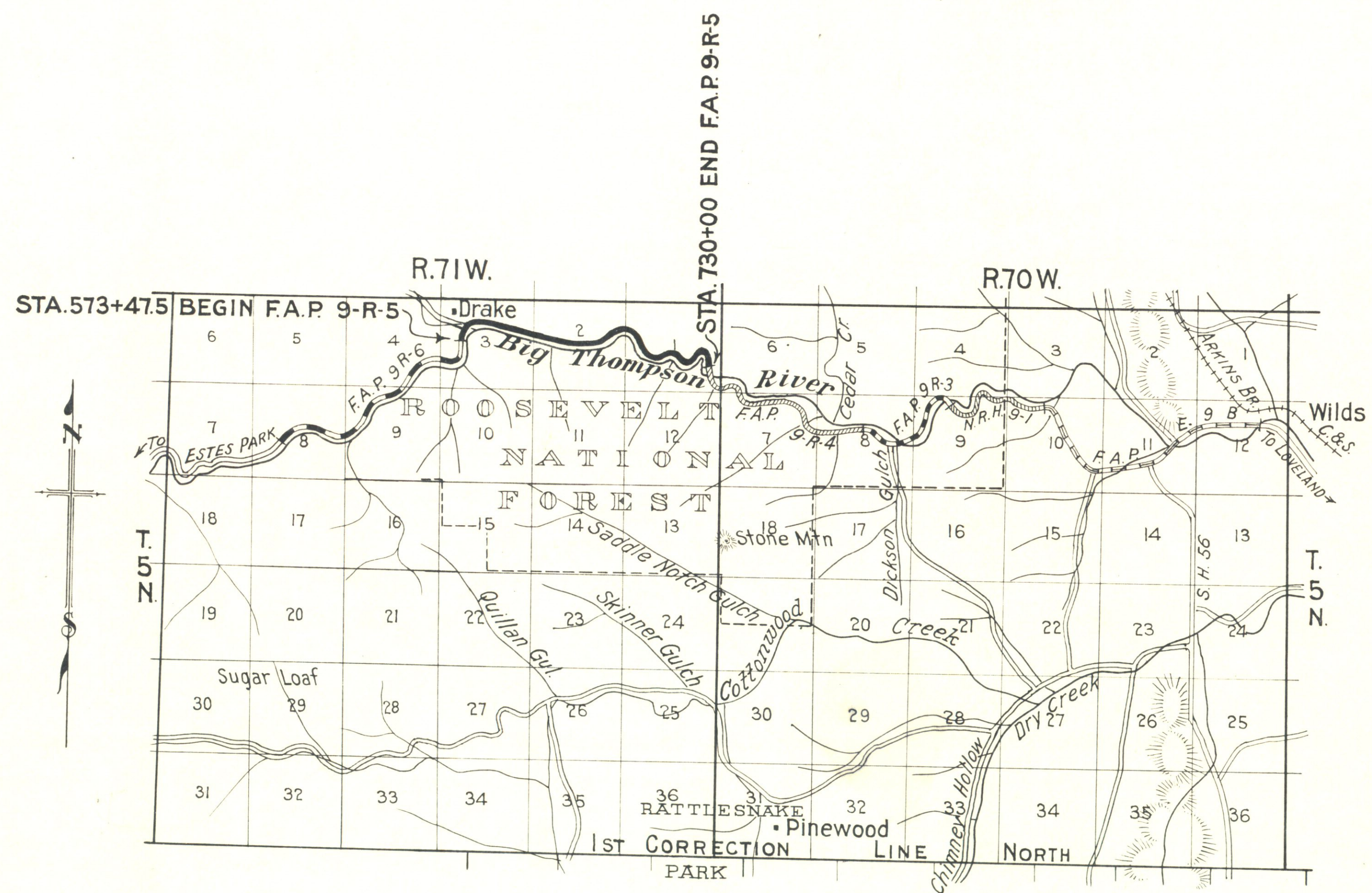
PLAN AND PROFILE OF PROPOSED FEDERAL AID PROJECT NO. 9-R-5 STATE HIGHWAY NO. 16 LARIMER COUNTY

- INDEX OF SHEETS**
- SHEET No. 1- TITLE SHEET
 - " No. 2- TYPICAL SECTION & SUMMARY
 - " " 3- LIST OF STRUCTURES
 - " 4- 9- DETAILS FOR BRIDGE, STA. 581+
 - " No. 10- STD HDWALLS FOR C.M.P. CULVERTS M-102-E
 - " " 11- " WIRE CABLE GUARD FENCE M-20-A
 - " " 12- " " FENCE (STEEL POSTS) M-27-A
 - " " 13- " STRUCTURE NO. LETTERING M-10-A
 - " " 14- " SUPERELEVATIONS & WIDENING M-1-A
 - " " 15- " SIDE APPRCH ROADS; SIGNS M-2-B
 - " " 16- DETAILS- MANHOLE & CATCH BASIN
 - " 17- 22- PLAN & PROFILE SHEETS
 - " 23- 101- CROSS SECTIONS
 - " No. 102- STD REINF. CONC. CULVERT PIPE M-112-A.

- CONVENTIONAL SIGNS**
- CENTER LINE OF SURVEY
 - RIGHT OF WAY LINES
 - ONE QUARTER SECTION LINES
 - SECTION LINES
 - TOWNSHIP LINES
 - COUNTY LINE
 - RAILROADS
 - BARBED WIRE FENCE
 - WIRE CABLE GUARD FENCE
 - POLE LINES



SCALES OF ORIGINAL TRACINGS
 ON PLAN, 1 IN. = 100 FT.
 ON PROFILE 1 IN. = 100 FT. HORIZONTAL
 1 IN. = 10 FT. VERTICAL
 GRADE LINE ON PROFILE IS SHOWN AS GRADE OF FINISHED ROAD
 GROSS LENGTH OF PROJECT } 15,659.2 FT. = 2.965 MI.
 NET LENGTH OF PROJECT }

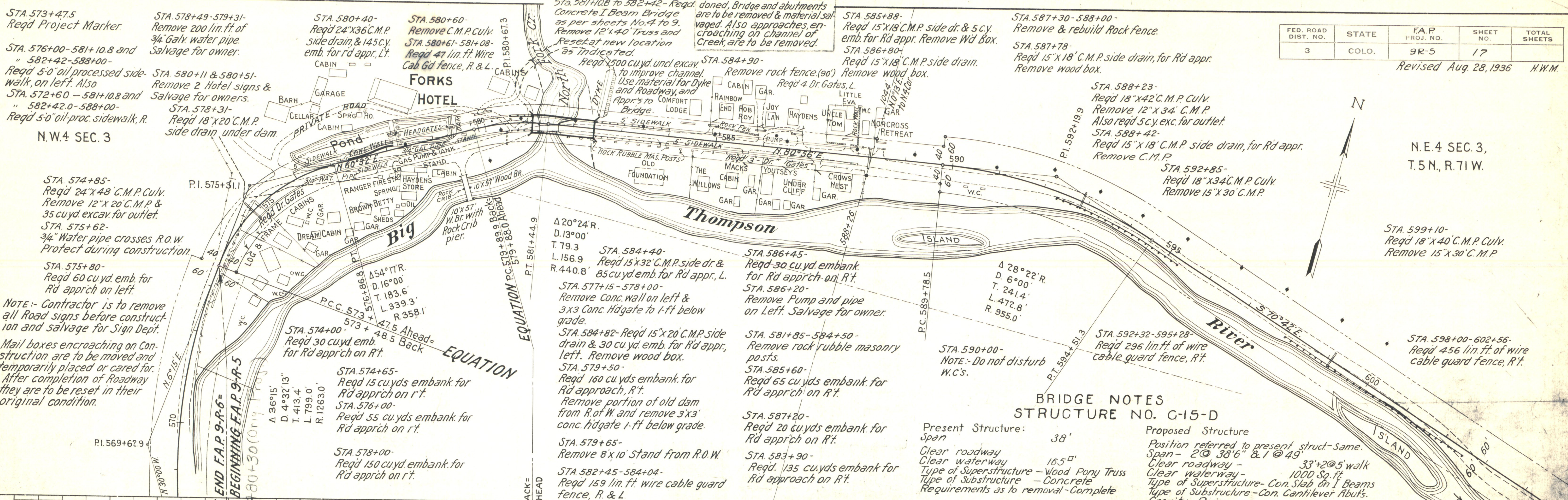


Note:- It is recommended that bidders on this Project go over the plan details with one of the following field representatives of this Department.
 R.J. Randall, Division Engineer, located at Greeley.
 Clyde Walters, Resident " " " Drake

RECOMMENDED FOR APPROVAL 6/12/36
 8/17/36
J. J. Leloney
 ASSISTANT ENGINEER
 APPROVED
Chas. Hail
 STATE HIGHWAY ENGINEER
 RECOMMENDED FOR APPROVAL
 DIST. ENG. BUREAU PUBLIC ROADS
 RECOMMENDED FOR APPROVAL
 CHIEF ENG. BUREAU PUBLIC ROADS
 APPROVED
 DIRECTOR BUREAU PUBLIC ROADS

FED. ROAD DIST. NO.	STATE	F.A.P. PROJ. NO.	SHEET NO.	TOTAL SHEETS
3	COLO.	9R-5	17	

Revised Aug 28, 1936 H.W.M.



STA 573+47.5
Reqd Project Marker

STA 576+00-581+10.8 and
582+42-588+00-
Reqd 5'-0" oil processed side-walk, on left. Also
STA 572+60-581+10.8 and
582+42.0-588+00-
Reqd 5'-0" oil-proc. sidewalk, R.

N.W.4 SEC. 3

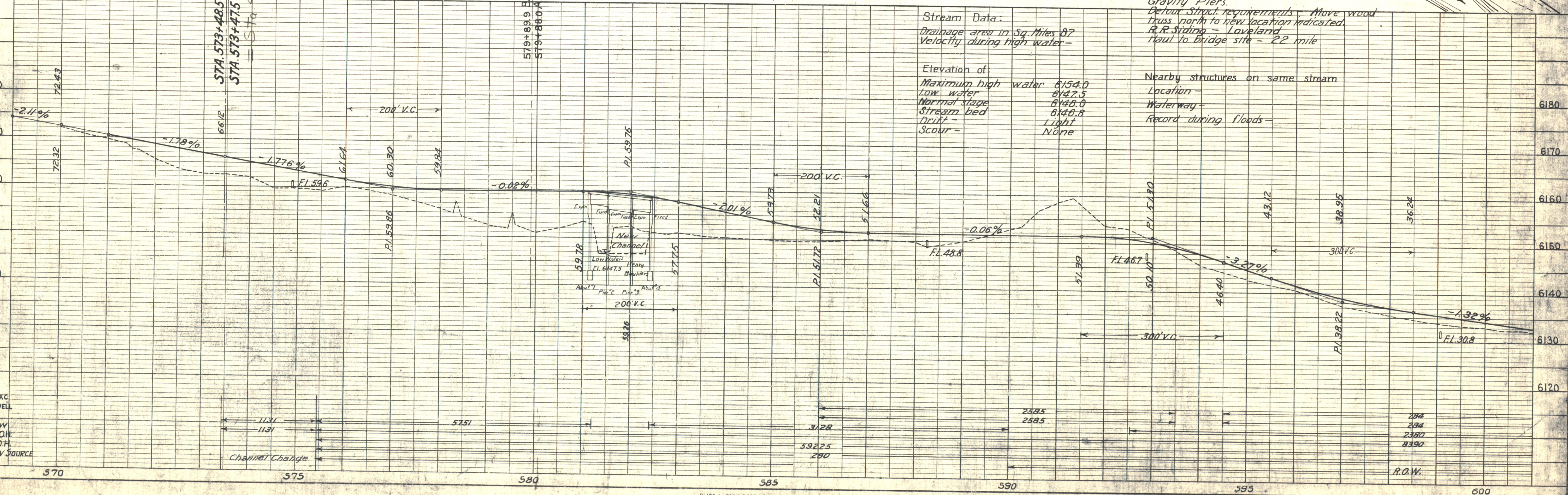
STA 574+85-
Reqd 24"x48" C.M.P. Culv.
Remove 12"x20 C.M.P. &
35 cu yd. excav. for outlet.

STA 575+62-
3/4" Water pipe crosses R.O.W.
Protect during construction

STA 575+80-
Reqd 60 cu yd. emb. for
Rd apprch on left.

NOTE:- Contractor is to remove
all Road signs before construct-
ion and salvage for Sign Dept.

Mail boxes encroaching on
Construction are to be moved and
temporarily placed or cared for.
After completion of Roadway
they are to be reset in their
original condition.



BRIDGE NOTES
STRUCTURE NO. C-15-D

Present Structure:	Span	38'	Proposed Structure	Position referred to present struct-Same.
Clear roadway	Clear waterway	165'-0"	Span -	2 @ 38'6" & 1 @ 49'
Type of Superstructure -	Type of Substructure -	Concrete	Clear roadway -	33'+2@5' walk
Requirements as to removal -	Requirements as to removal -	Complete	Clear waterway -	1000 Sq. ft.

Stream Data:

Drainage area in Sq. Miles	87
Velocity during high water -	

Elevation of:

Maximum high water	6154.0
Low water	6147.5
Normal stage	6146.0
Stream bed	6146.8
Drift -	Light
Scour -	None

Nearby structures on same stream

Location -	
Waterway -	
Record during floods -	

Detour Struct. requirements - Move wood
truss north to new location indicated.
R.R. siding - Loveland
haul to bridge site - 22 mile

N.E.4 SEC.3, T.5N, R.71W

N.W.4 SEC.2

FED. ROAD DIST. NO.	STATE	F.A.P. PROJ. NO.	SHEET NO.	TOTAL SHEETS
3	COLO.	9R-5	18	

STA 606+50-
Reqd 4'x4' Conc. Vaults.
Move WC's from R of W
(Force Account)

STA 609+57-
Remove 15'x30' C.M.P.

STA 610+00-
Reqd 24'x36' C.M.P. Culv.

Δ 7°28' L.
D. 3°00' L.
T. 124.6'
L. 248.9'
R. 1910'

P.C. 608+10.3

P.T. 610+59.2

P.I. 615+10.4

Δ 46°57' L.
D. 6°00' L.
T. 414.8'
L. 782.5'
R. 955.0'

STA 619+50-
Reqd 18'x36' C.M.P. Culv.

STA 623+70-
Remove "Sunnyside" Cabin
from R. of W. (Force Acct.)

STA 623+75-
Reqd 15'x20' C.M.P. side
drain, & 10 cu yds embank
for Rd apprch.

Δ 30°42' R.
D. 9°00' L.
T. 174.8'
L. 341.1'
R. 636.7'

P.T. 616+76.7

STA 620+40-
Reqd 110 cu yds embank
for Rd apprch, R.

STA 620+45-620+80-
Remove Rock fence, R. (40 Ft.)

STA 621+00-633+00-
Reqd 5' oil processed
sidewalk, R.

STA 623+00-
Reqd 20 cu yd embank for
road apprch, R.

STA 624+80-
Reqd 15 cu yd embank
for Rd apprch, R.

STA 628+50-
Reqd 35 cu yd emb.
for Rd apprch, R.

STA 628+75-
Remove "Loomis Lodge" Cabin. (Force Acct)
Reqd 15'x20' C.M.P. side drain &
20 cu yd Emb.-Rd App.-Lt.
STA 629+20-
Reqd 15'x20' C.M.P. side drain,
& 20 cu yd Emb.-Rd App.-Lt.

STA 625+00-
Remove Cabin from R. of W.
(Force Account)

STA 628+75-
Remove "WHITE CABIN" from R. of W.
(Force Account)

STA 629+80-
Remove "WELCOME INN" Cabin from R. of W.
(Force Account)

STA 630+00-
Remove "GRAY HOME" Cabin from R. of W.
(Force Account)

STA 631+70 & 631+90-
Remove Cabins No. 5 & 6 from R. of W.
(Force Account)

STA 630+20-
Reqd 15'x30' C.M.P. side drain on left,
& 135 cu yd Emb.-Rd Apprch.-Lt.

PLAN	DATE
SURVEYED	
PLOTTED	
NOTE BOOK ALIGNED CHECKED	
BY	
NO.	

PROFILE	DATE
SURVEYED	
PLOTTED	
NOTE BOOK ALIGNED CHECKED	
BY	
NO.	

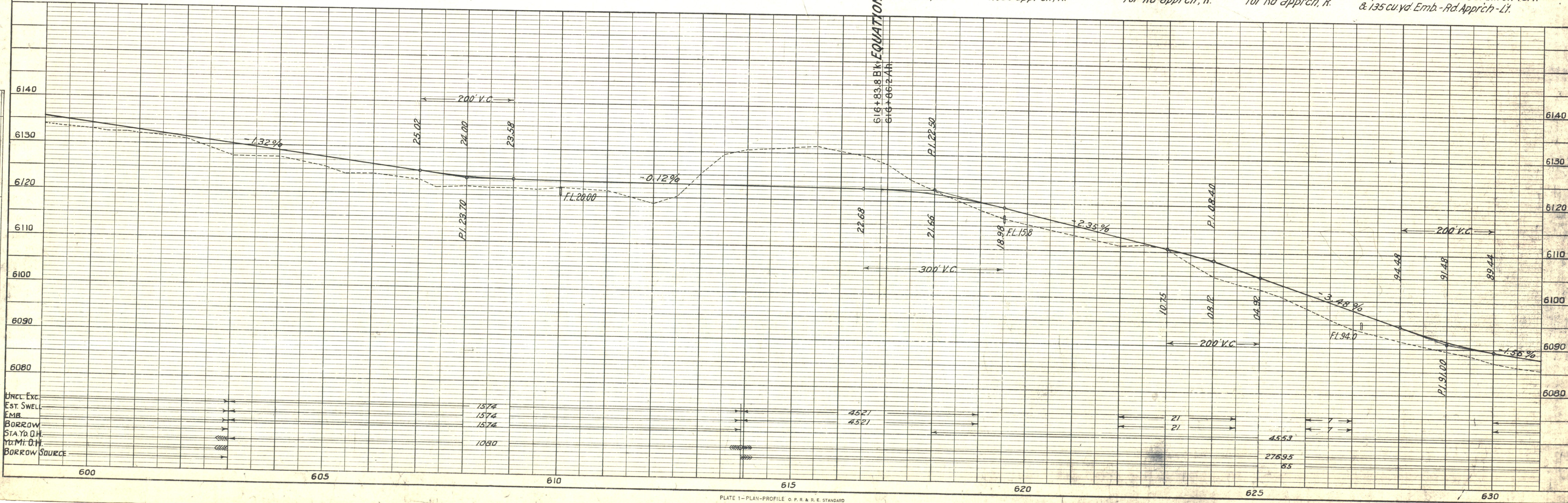


PLATE 1-PLAN-PROFILE OF P.R.R.E. STANDARD
KIEFFEL & ESSER CO., NEW YORK

DATE	BY	PLANNED	SURVEYED	PLANNED
		NOTE BOOK	ALIGNED CHECKED	RT. OF WAY CHECKED
		NO.		

DATE	BY	PROFILE	SURVEYED	PLANNED
		NOTE BOOK	ALIGNED CHECKED	STRUCTURE NOTATION CHECKED
		NO.		

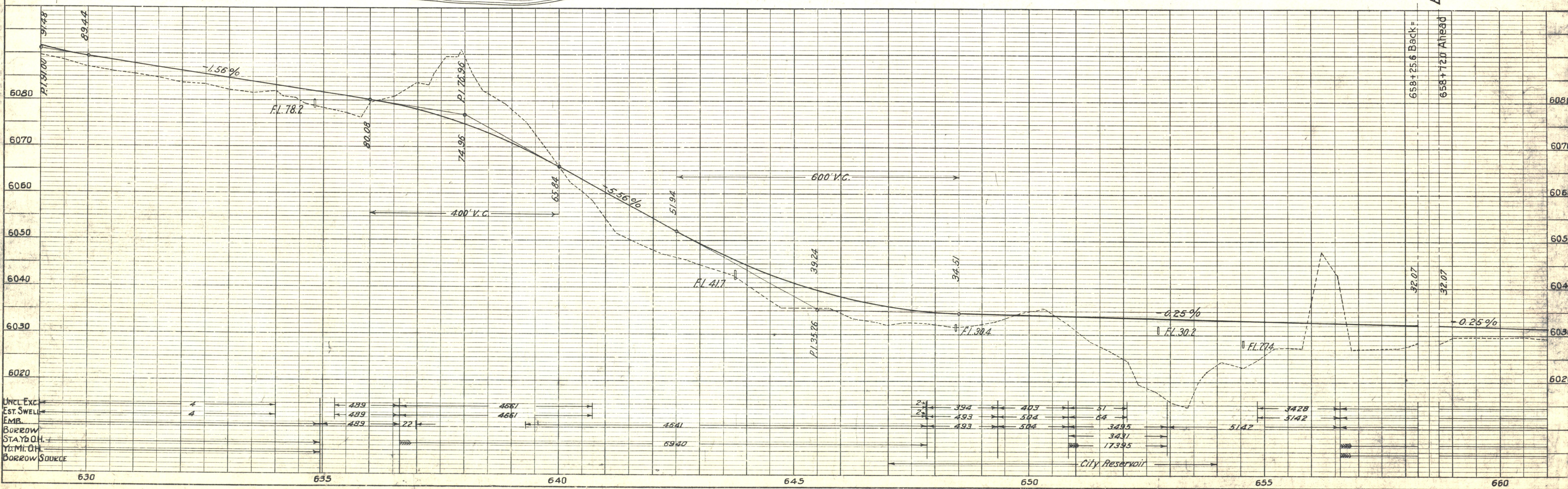
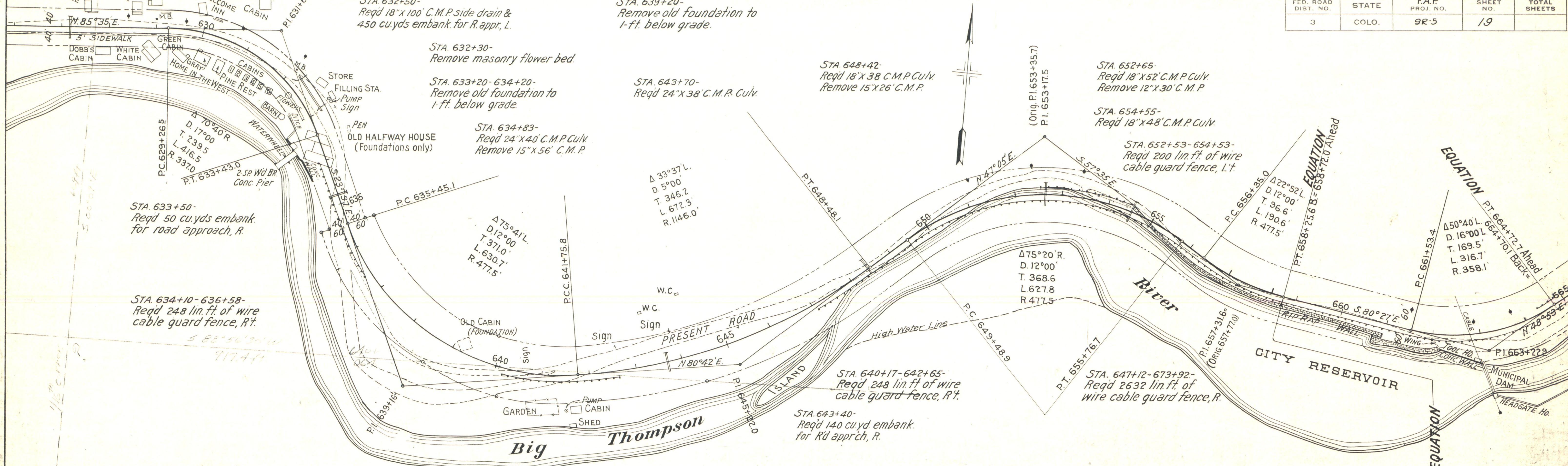


PLATE 1 - PLAN-PROFILE - O. P. R. & R. E. STANDARD
 KEUFFEL & ESSER CO., NEW YORK

FED. ROAD DIST. NO.	STATE	F.A.P. PROJ. NO.	SHEET NO.	TOTAL SHEETS
3	COLO.	9R-5	20	

PLAN	REVISIONS	DATE
NO.	NO.	

NOTE: BOOK ALIGNMENT CHECKED. PT. OF V.A. CHECKED.

PROFILE	REVISIONS	DATE
NO.	NO.	

NOTE: BOOK ELEVATIONS CHECKED. B.M. NOTED. STRUCTURE NOTATIONS OK'D.

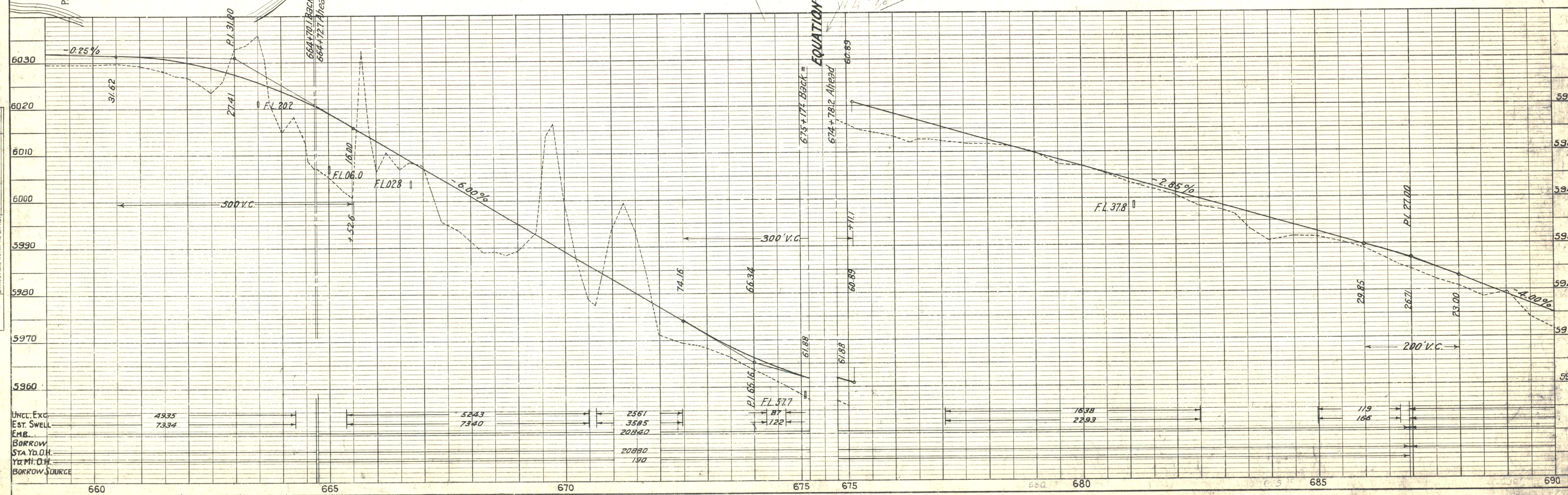
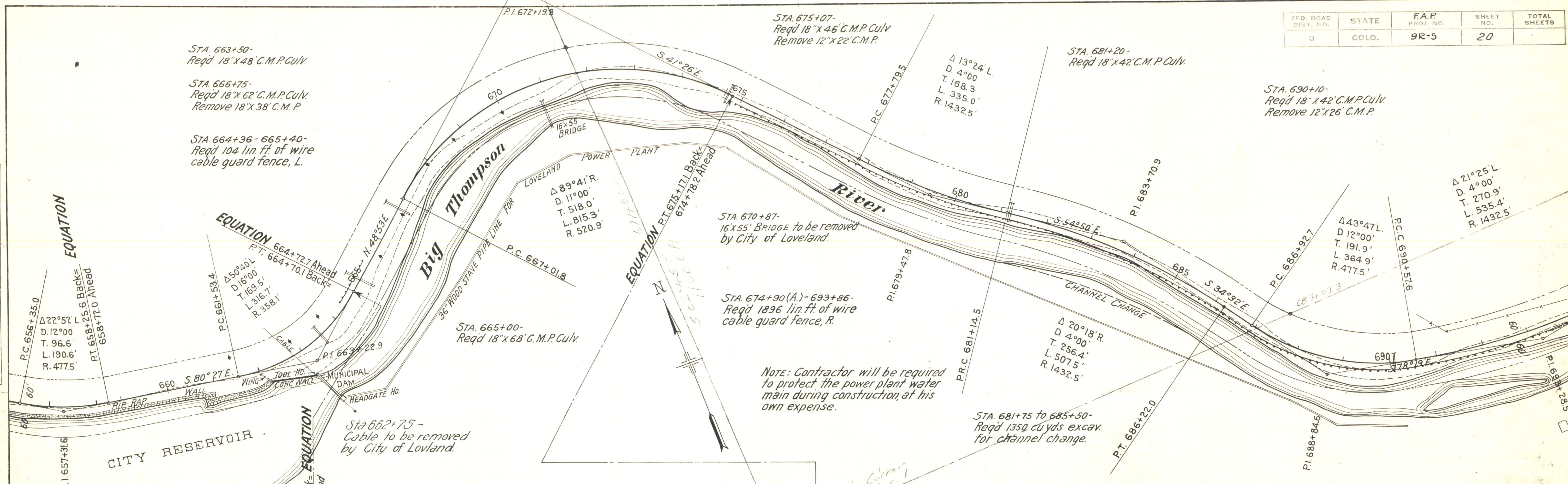


PLATE 1 - PLAN-PROFILE O. P. R. & E. STANDARD
KURTZ & ESSER CO., NEW YORK

FED. ROAD DIST. NO.	STATE	F.A.P. PROJ. NO.	SHEET NO.	TOTAL SHEETS
3	COLO.	9R-5	21	

PI. 723+20.3

Δ=26°31'
D=19°R
T=598.5'
L=665.9'
R=301.6'

DATE	BY	PLAN
		SURVEYED
		PLOTTED
		NOTE BOOK ALIGNMENT CHECKED
		ART. OF PLAN CHECKED

DATE	BY	PROFILE
		SURVEYED
		COMPARISONS CHECKED
		B.M. & NOTED
		STRUCTURE NOTATIONS CHKD.

