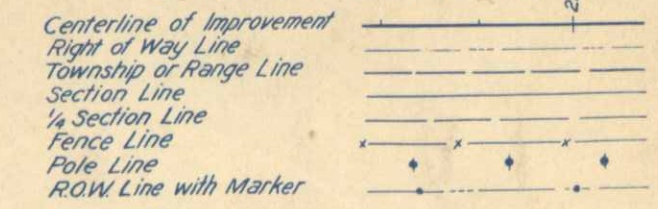


FED. ROAD DIST. NO.	STATE	COMB. FED. AID PROJ. NOS.	SHEET NO.	TOTAL SHEETS
3	COLO.	9-R-7 & 9-F	1	

# COLORADO STATE HIGHWAY DEPARTMENT

## PLAN AND PROFILE OF PROPOSED COMB. FEDERAL AID PROJECT NO. 9-R-7 & COMB. FEDERAL AID PROJECT NO. 9-F STATE HIGHWAY NO. 16 U.S. 34 LARIMER COUNTY

### CONVENTIONAL SIGNS



8

**INDEX OF SHEETS**

1.	TITLE SHEET	
2.	TYPICAL SECTION & SUMMARY	
2-A.	TABULATION OF STRUCTURES FENCES & R.O.W. MARKERS	
3-3A.	DETAILS OF BRIDGE, STA. 55+	
4.	STANDARD CONC. BOX CULVERTS	M-103-D
5.	"	M-104-D
6.	" REINF. CONC. CULV. PIPE	M-112-C
7.	" HEADWALLS FOR C.M.P. CULVERTS	M-102-E
8.	" CATTLE GUARD	M-16-A
9.	" WIRE CABLE GUARD FENCE	M-20-A
10.	" WIRE FENCES & MARKER POSTS	M-27-A
10A.	" STRUCTURE NUMBER LETTERING	M-10-A
11.	" SUPERELEVATION SHEET	M-1-A
12.	" TRAFFIC SIGNS & APPROACH ROADS	M-2-B
13-17.	PLAN AND PROFILE	
18-20.	CROSS SECTIONS	

**SCALES ON ORIGINAL TRACINGS**

ON PLAN, 1 IN. = 100 FT.  
ON PROFILE, 1 IN. = 100 FT. HORIZONTAL  
1 IN. = 10 FT. VERTICAL

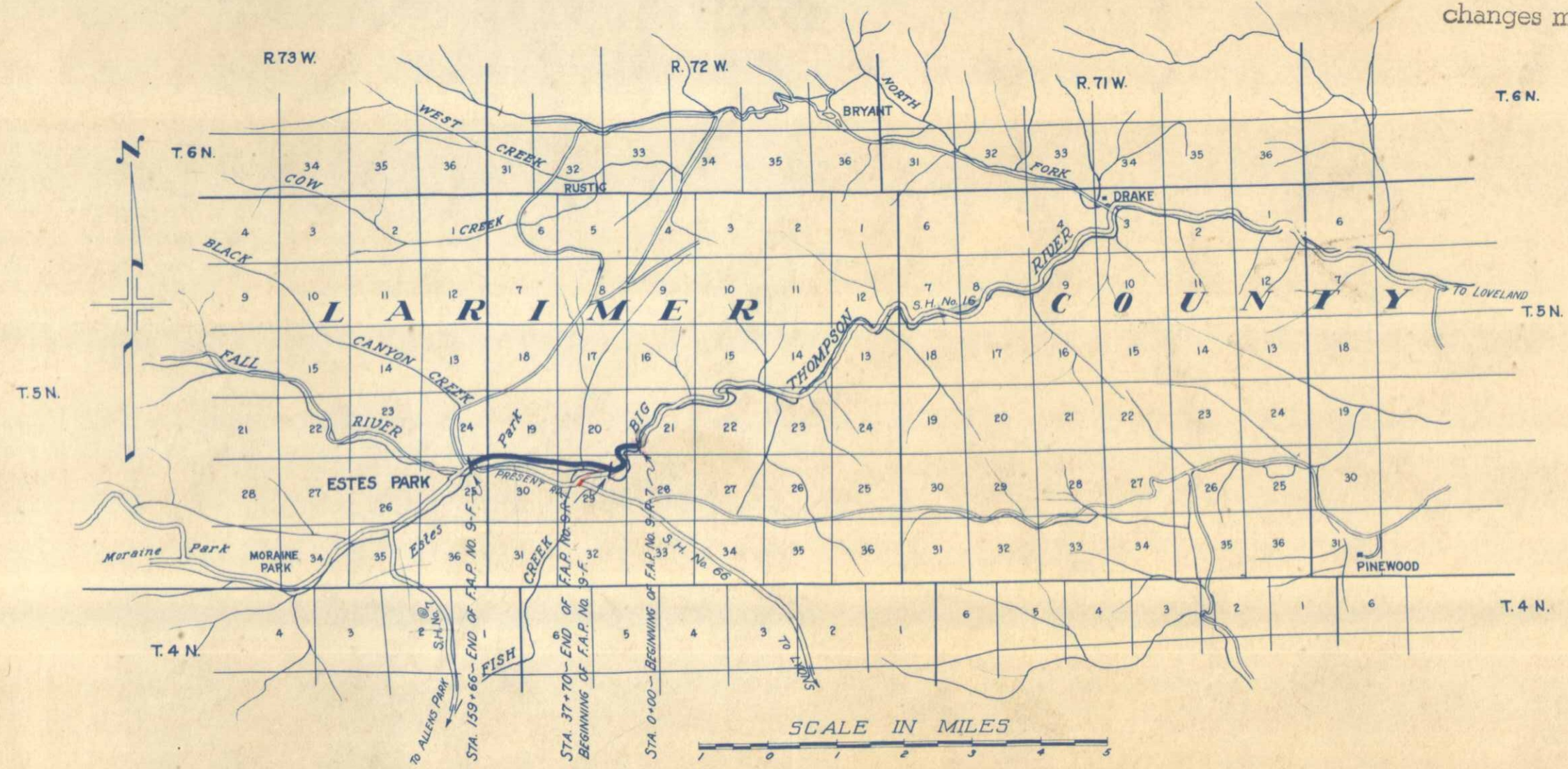
GRADE LINE ON PROFILE IS SHOWN AS GRADE OF FINISHED ROAD

F.A.P. 9-R-7	GROSS LENGTH OF PROJECT	3770.0 FT. = 0.714 MI.
	NET LENGTH OF PROJECT	
F.A.P. 9-F	GROSS LENGTH OF PROJECT	11,240.8 FT. = 2.128 MI.
	NET LENGTH OF PROJECT	

AS CONSTRUCTED PLANS  
RETURN TO DIST. 4 DESIGN

9

NOTICE, these plans may not reflect changes made during construction.



**NOTE**  
It is recommended that bidders on this Project go over the plan details with one of the following field representatives of this Department:  
R.J. Randall, Division Eng. located at Greeley.  
Clyde Walters, Resident - Loveland.

RECOMMENDED FOR APPROVAL 10/15/66  
*Richard [Signature]*  
ASSISTANT ENGINEER

APPROVED  
*Chas. Hill*  
STATE HIGHWAY ENGINEER

RECOMMENDED FOR APPROVAL

..... DIST. ENG. BUREAU PUBLIC ROADS  
RECOMMENDED FOR APPROVAL

..... CHIEF ENG. BUREAU PUBLIC ROADS  
APPROVED

..... DIRECTOR BUREAU PUBLIC ROADS

STA. 0+29 - Remove Gas Pump on Lt. (FORCE ACC'T)  
 " 0+34 - " Grease Rock on Lt. ( " )  
 " 0+45 - " Gas Pump on Lt. ( " )

STA. 1+12 - Remove 2 Sign Posts on Rt.

T. 5 N. R. 72 W.

STA. 8+85 to 11+00 -  
 Req'd. 1600 Cu. Yd. Uncl. Excav.  
 for Channel Change. Material  
 to be used in roadway embank.  
 between STAs. 12+25 & 15+45

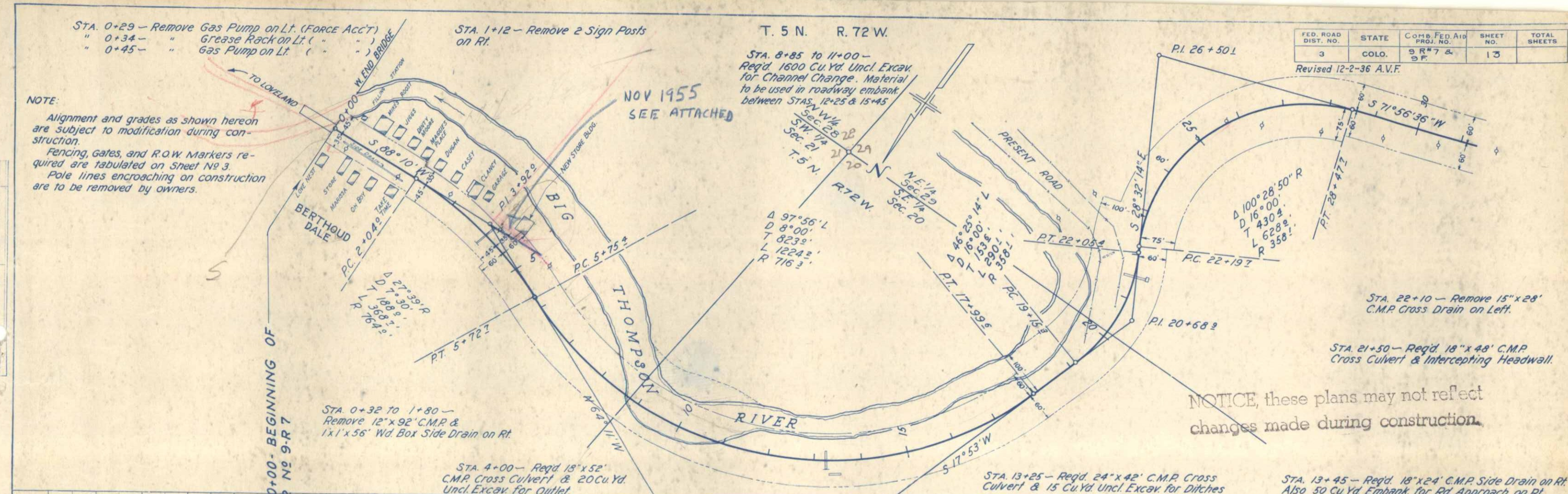
FED. ROAD DIST. NO.	STATE	COMB. FED. AID PROJ. NO.	SHEET NO.	TOTAL SHEETS
3	COLO.	9 R#7 & 9 F.	13	

Revised 12-2-36 A.V.F.

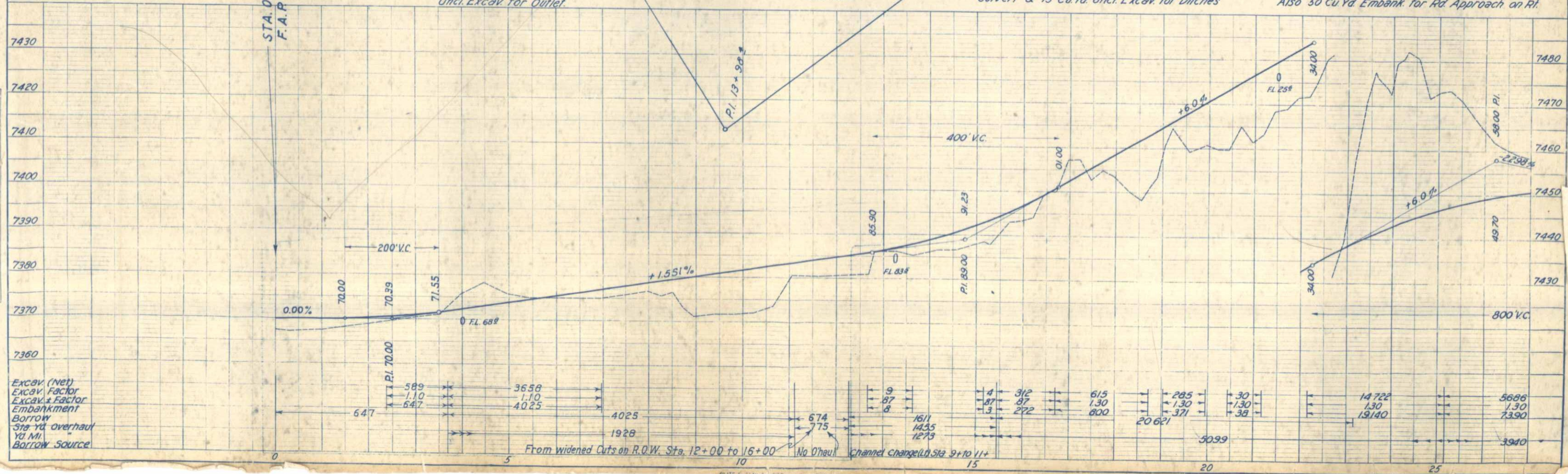
NOTE:

Alignment and grades as shown hereon are subject to modification during construction.  
 Fencing, Gates, and R.O.W. Markers required are tabulated on Sheet No. 3.  
 Pole lines encroaching on construction are to be removed by owners.

NOV 1955  
 SEE ATTACHED



NOTICE, these plans may not reflect changes made during construction.





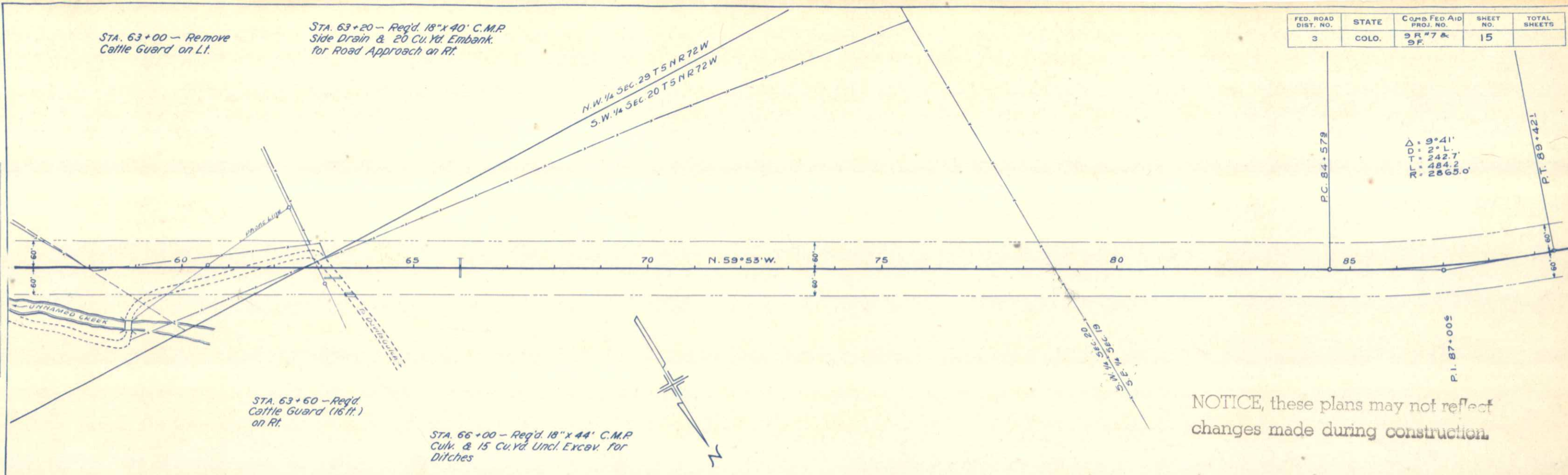
FED. ROAD DIST. NO.	STATE	Comp. Fed. Aid Proj. No.	SHEET NO.	TOTAL SHEETS
3	COLO.	9 R #7 & 9 F.	15	

STA. 63+00 - Remove Cattle Guard on Lt.

STA. 63+20 - Req'd. 18"x40' C.M.P. Side Drain & 20 Cu. Yd. Embank. for Road Approach on Rt.

N.W. 1/4 SEC. 29 T5 N R72 W  
S.W. 1/4 SEC. 20 T5 N R72 W

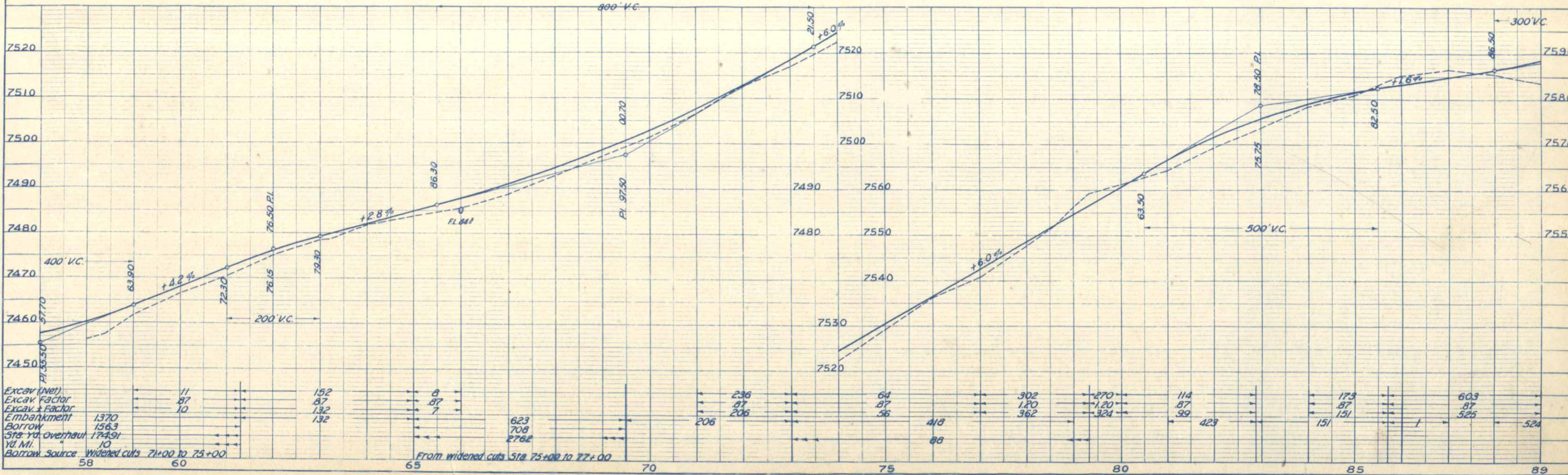
Δ = 9°41'  
D = 2°1'  
T = 242.7'  
R = 484.2'  
R = 2865.0'



STA. 63+60 - Req'd. Cattle Guard (16 ft.) on Rt.

STA. 66+00 - Req'd. 18"x44' C.M.P. Culv. & 15 Cu. Yd. Uncl. Excav. for Ditches

NOTICE, these plans may not reflect changes made during construction.



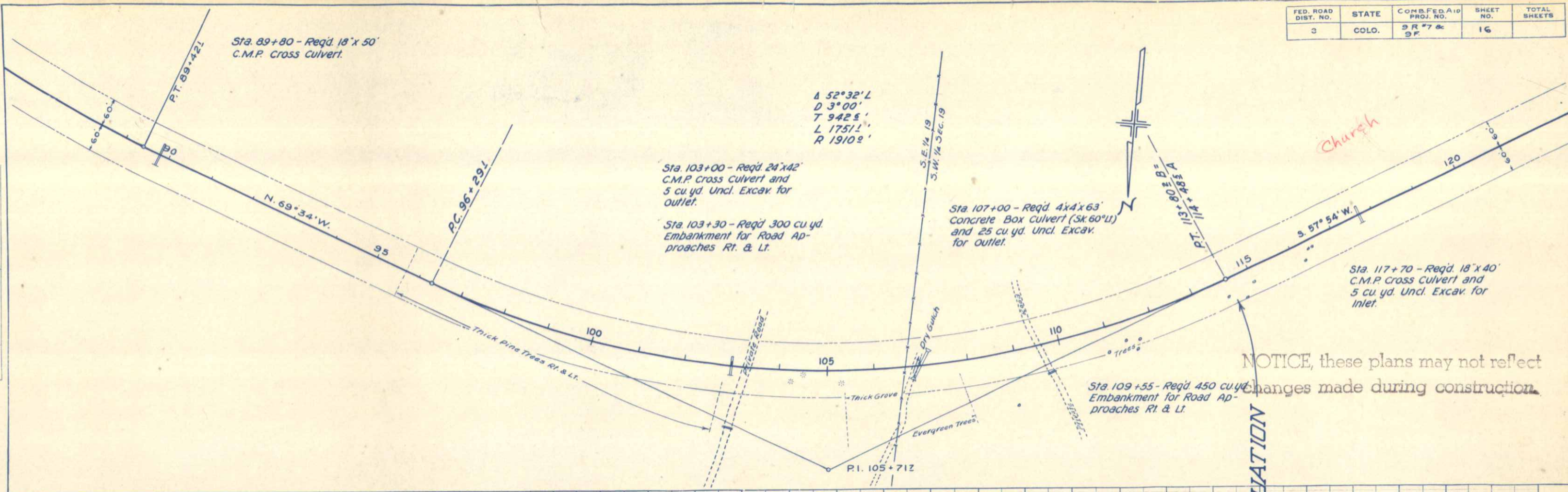
PL. NO. DATE  
BY  
CHECKED  
DATE

PROFILE  
SURVEYED  
PLANNED  
NOTE BOOK  
NO.

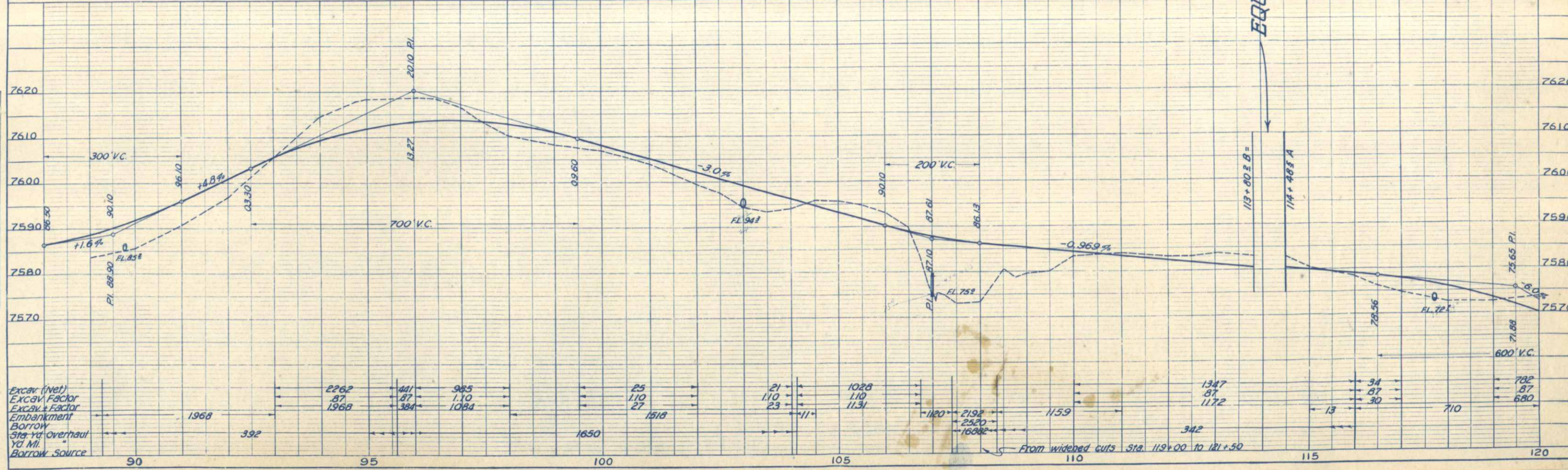
FED. ROAD DIST. NO.	STATE	CONB. FED. AID PROJ. NO.	SHEET NO.	TOTAL SHEETS
3	COLO.	SR 7 & 9 F	16	

PLAN  
 CHECKED BY  
 DATE  
 DRAWN BY  
 DATE  
 NOTE: ALL DIMENSIONS ARE IN FEET UNLESS OTHERWISE NOTED.

PROFILE  
 CHECKED BY  
 DATE  
 DRAWN BY  
 DATE  
 NOTE: BODIES AND DIMENSIONS CHECKED BY M.S. NOTED. STRUCTURE NOTED FOR CHANG.



NOTICE, these plans may not reflect changes made during construction.



STA. 122+87 - Req'd. 18" x 42" C.M.P. Culk & Intercepting Headwall & 5 Cu. Yd. Uncl. Excav. for Inlet.

STA. 130+00 to 131+15 - Req'd. 250 Cu. Yd. Embank. for Rd. Approach on Lt.

STA. 131+15 - Req'd. 15" x 26" C.M.P. Side Drain & 5 Cu. Yd. Uncl. Excav. for Inlet. Also, 50 Cu. Yd. Embank. for Rd. Approach on Rt.

STA. 131+30 to 132+93.8 B - Req'd. 35 Cu. Yd. Embank. for Ditch Change Lt.

STA. 131+50 to 132+75 - Req'd. 40 Cu. Yd. Embank. for Ditch Change Lt.

STA. 151+00 to 155+60 - Req'd. 75 Cu. Yd. Uncl. Excav. for Ditch Change on Rt.

STA. 151+85 - Req'd. 18" x 48" C.M.P. Culk & 10 Cu. Yd. Uncl. Excav. for Ditches (Irrig.)

STA. 151+50 - Req'd. 75 Cu. Yd. Embank. for Rd. Approach on Lt.

STA. 156+05 - Remove 6" x 12" x 10' Wd. Box Culk

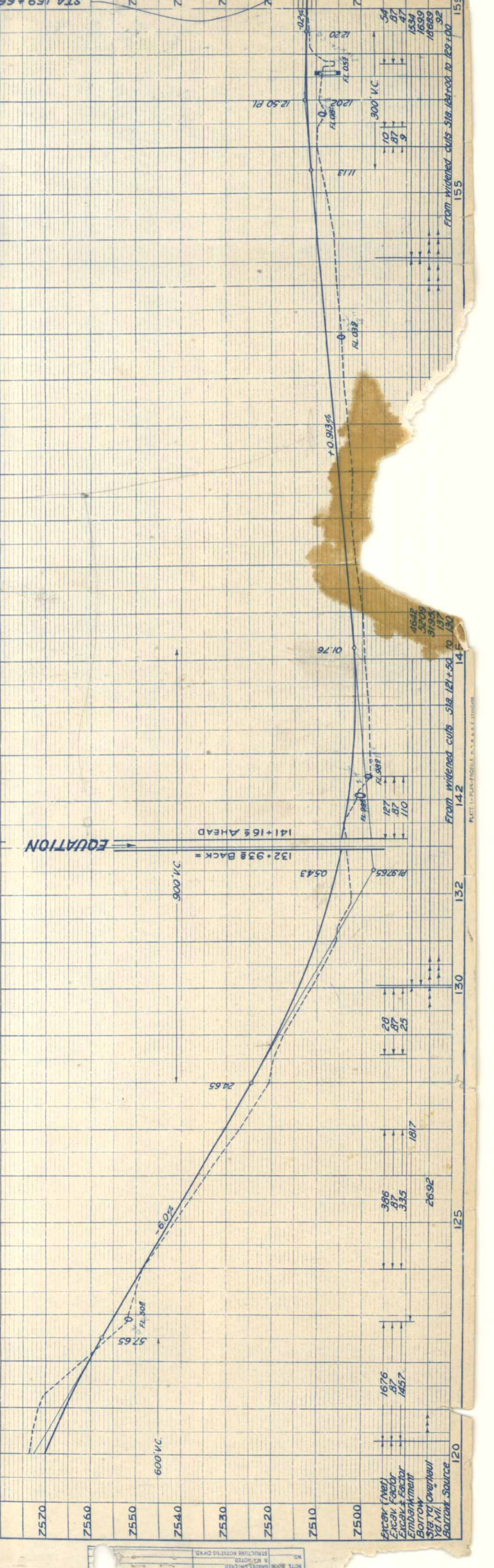
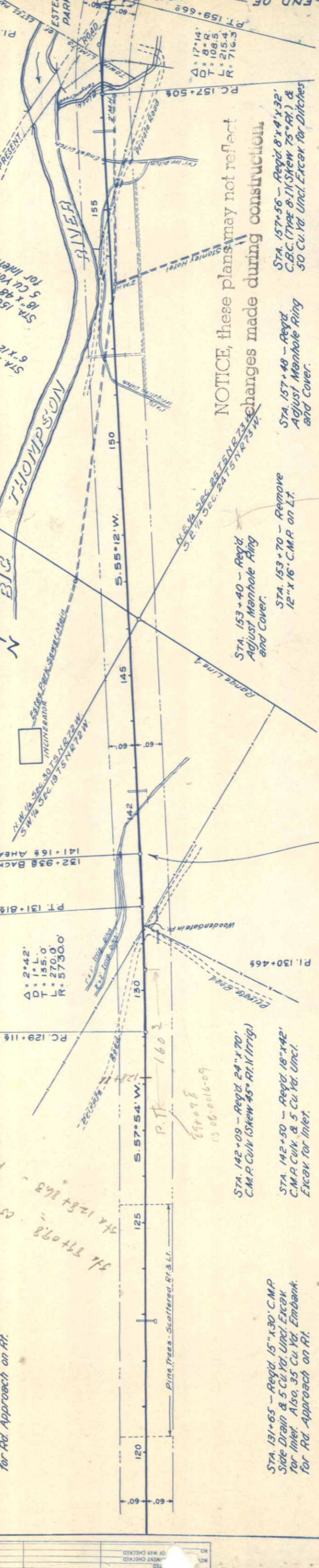
STA. 156+70 - Req'd. 18" x 48" C.M.P. Culk & 5 Cu. Yd. Uncl. Excav. for Inlet.

STA. 157+56 - Req'd. 8" x 4" x 32" C.B.C. (Type B-1) (Slew 75° Rt.) & 50 Cu. Yd. Uncl. Excav. for Ditches

STA. 157+48 - Req'd. Adjust Manhole Ring and Cover.

STA. 153+40 - Req'd. Adjust Manhole Ring and Cover.

STA. 153+70 - Remove 12" x 16" C.M.P. on Lt.



NO.	DATE	BY	NOTE

NO.	DATE	BY	NOTE