

# COLORADO

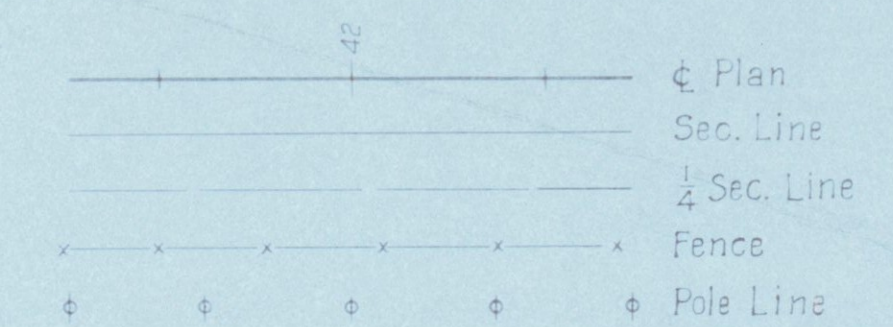
## STATE HIGHWAY DEPARTMENT

### PLAN AND PROFILE OF PROPOSED FEDERAL AID PROJECT NO. 9-R STATE HIGHWAY NO. 16 LARIMER COUNTY

#### INDEX OF SHEETS

1.	Title Page	
2.	Typical Section and Summary of Quantities	M-102-E
3.	Standard Headwalls for C.M.P. Culverts	M- 20-F
4.	" Guard Fence	M- 24-F
5.	" Marker Posts	M- 1-A
6.	" Superlevation Sheet	
7-8	Plan and Profile	
9-39	Cross Sections	

#### CONVENTIONAL SIGNS



**SCALES**

ON PLAN, 1 IN. = 100 FT.  
ON PROFILE 1 IN. = 100 FT. HORIZONTAL  
1 IN. = 10 FT. VERTICAL

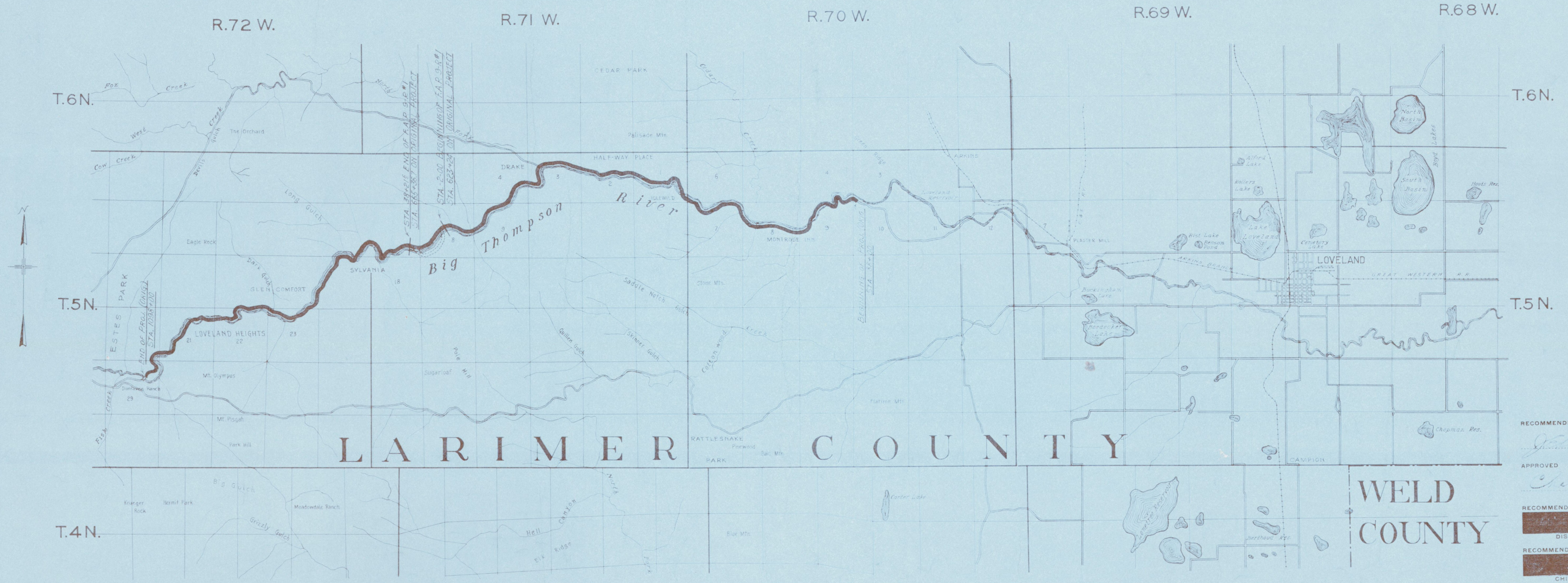
GRADE LINE ON PROFILE IS SHOWN AS GRADE OF FINISHED ROAD

GROSS LENGTH OF PROJECT      NET LENGTH OF PROJECT  
9-R CONST. DIV. 1 - 4000 FT. = 0.757 MILES      4000 FT. = 0.757 MILES

**NOTE**

*It is recommended that bidders on this project go over the plan details with one of the following field representatives of this department.*

A.B. Collins      Div. Engr. located at Greeley  
Clyde Walker      Res. Engr.      "      "      "



Scale: 1 in. = 1 Mile

RECOMMENDED FOR APPROVAL  
*[Signature]*  
ASSISTANT ENGINEER

APPROVED  
*[Signature]*  
STATE HIGHWAY ENGINEER

RECOMMENDED FOR APPROVAL  
DIST. ENG. BUREAU PUBLIC ROADS

RECOMMENDED FOR APPROVAL  
CHIEF ENG. BUREAU PUBLIC ROADS

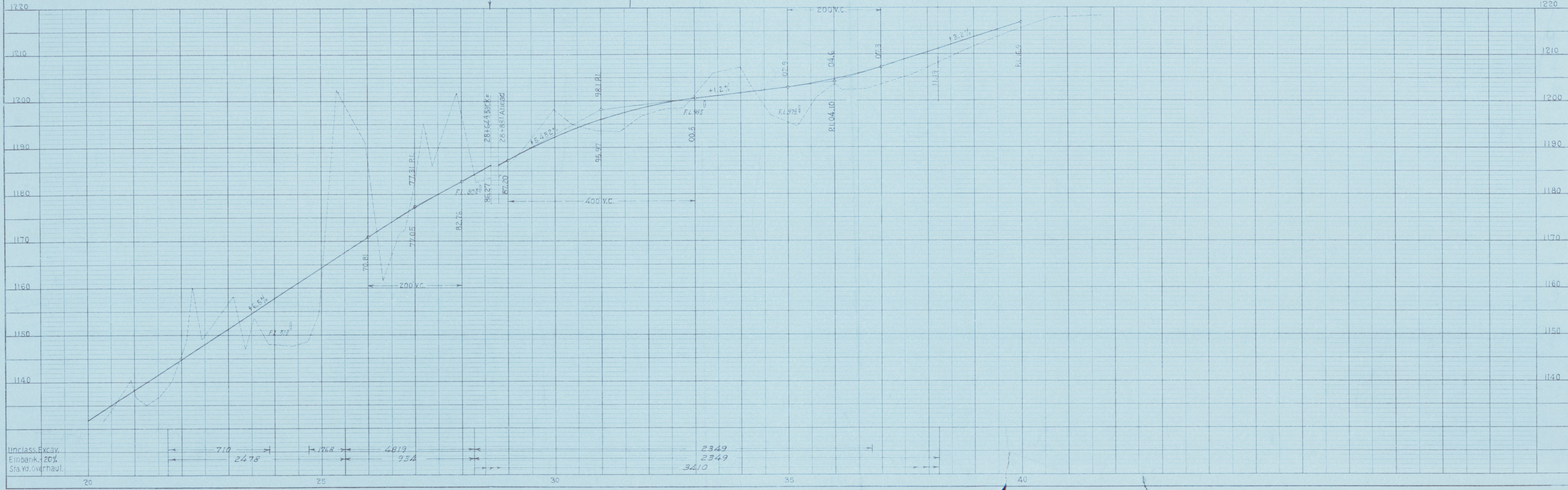
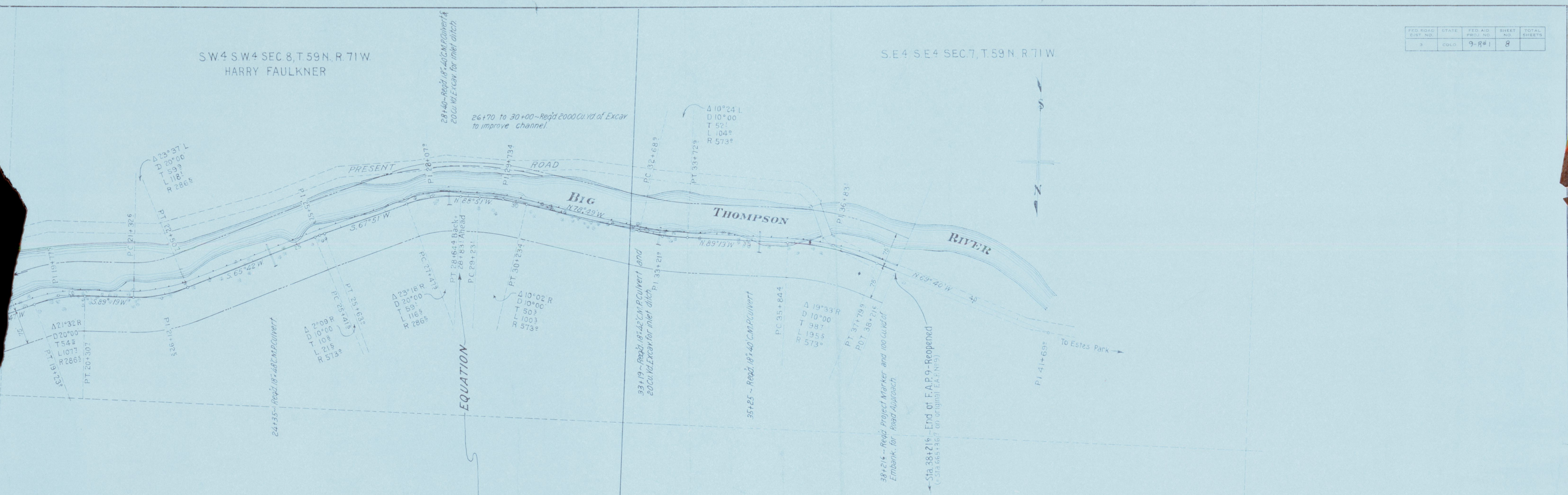
APPROVED  
DIRECTOR BUREAU PUBLIC ROADS



FED. ROAD DIST. NO.	STATE	FED. AID PROJ. NO.	SHEET NO.	TOTAL SHEETS
3	COLORADO	9-8#1	8	8

SW 4 SW 4 SEC 8, T. 59 N, R. 71 W  
HARRY FAULKNER

SE 4 SE 4 SEC 7, T. 59 N, R. 71 W



DATE	BY	PROFILE
		NO. 1
		NO. 2
		NO. 3
		NO. 4
		NO. 5
		NO. 6
		NO. 7
		NO. 8
		NO. 9
		NO. 10

Uncl. Excav.      710      4819      2349  
 Embank. +20%      2478      934      2349  
 Sta. Yd. Overhaul.                3410