

**INDEX OF SHEETS**

SHEET NO. 1 TITLE SHEET.  
 2-2A TABULATION OF PROPERTIES.  
 3-11 PLAN AND PROFILE SHEETS  
 SHOWING RIGHT OF WAY.  
 12 OWNERSHIP MAP

**COLORADO**  
**DEPARTMENT OF HIGHWAYS**  
**PLAN AND PROFILE OF PROPOSED**  
**FEDERAL AID PROJECT NO. BF 006-1(15)**  
**STATE HIGHWAY NO. 3**  
**WELD COUNTY**

Rev. 12-11-59 access REC.  
**RIGHT OF WAY**

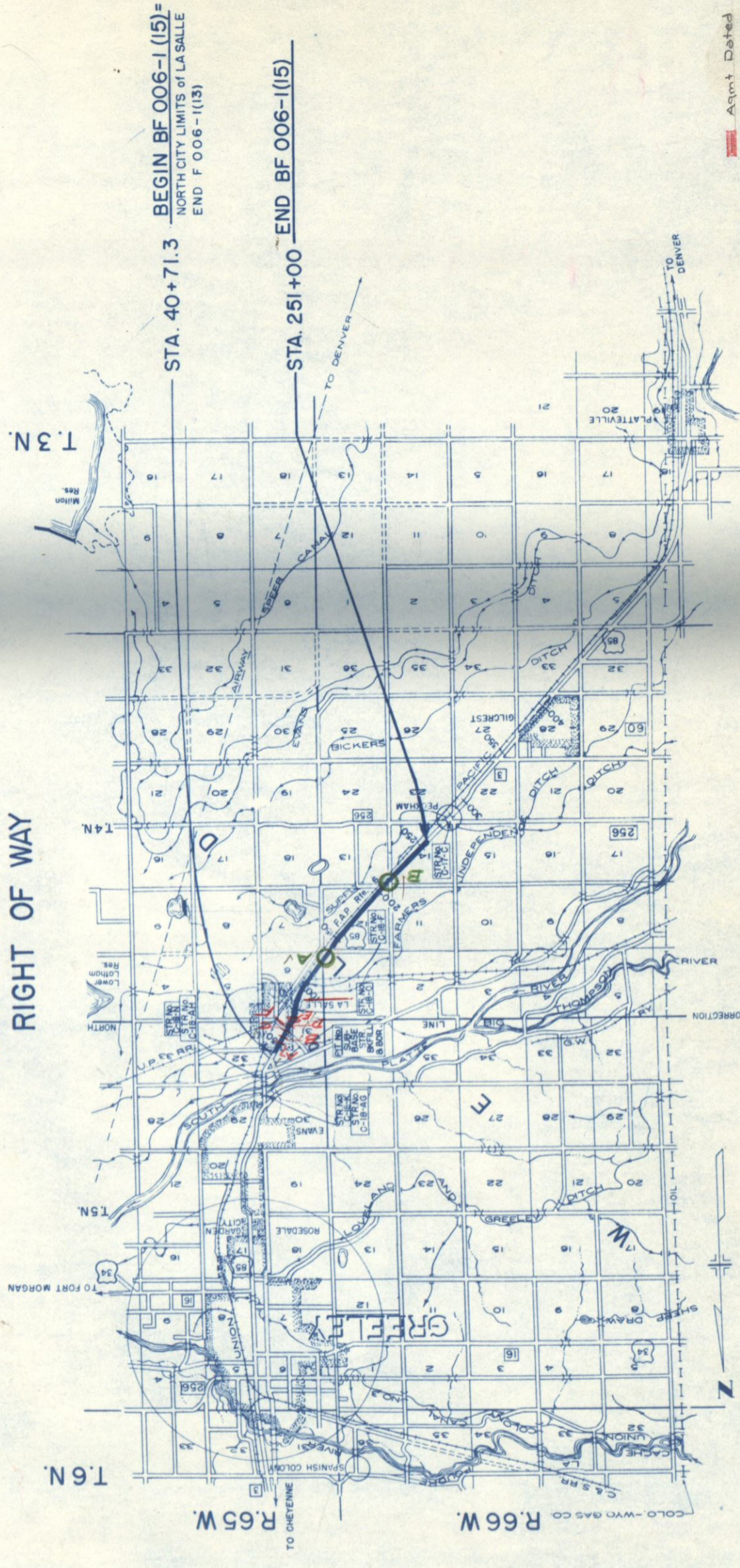
- CONVENTIONAL SIGNS**
- CENTER LINE
  - RIGHT OF WAY LINE
  - COUNTY LINE
  - TOWNSHIP OR RANGE LINE
  - LAND LINES
  - RAILROAD
  - BARBED WIRE FENCE
  - COMBINATION WIRE FENCE
  - TELEPHONE & TELEGRAPH LINES
  - POWER LINE
  - PRESENT ROAD (Plan Sheets)
  - CITY LIMITS
  - PROPERTY OR TRACT LINE
  - WATER MAIN
  - Access denied by Deed

**SCALES OF ORIGINAL DRAWINGS**

ON PLAN. 1 IN. = 100 FT.  
 ON PROFILE 1 IN. = 100 FT. HORIZONTAL  
 1 IN. = 10 FT. VERTICAL

GRADE LINE ON PROFILE IS SHOWN AS GRADE OF FINISHED ROAD  
 GROSS LENGTH OF PROJECT }  
 NET LENGTH OF PROJECT }

**RIGHT OF WAY**



Agmt Dated Jan. 25, 1954  
 " " May 30, 1955

R.O.W. TABULATION OF PROPERTIES IN WELD COUNTY S.H.No. 3 PROJ. BF 006-1(15)

FEDERAL ROAD DIVISION NO. 9 DISTRICT COLORADO PROJ. NO. BF-006-1(15) SHEET NO. 2 TOTAL SHEETS

PARCEL NO.	OWNER	ADDRESS	LOCATION	AREA		ACRES TO BE ACQUIRED	REMARKS	NO.
				TOTAL LAND IN TRACT	IN PARCEL			
			T. 5N., R. 65W. McCutcheon 2nd Addition, LaSalle					
1	DIXIE OIL COMPANY	1000 WATER STREET, DENVER, COLO.	BLOCK 16 SE 1/4 SEC. 31	0.091	0.091	0.091		
2	DIXIE OIL COMPANY	1000 WATER STREET, DENVER, COLO.	BLOCK 16 SE 1/4 SEC. 31	0.021	0.021	0.021		
3	W.E. DENNIS & PAULINE J. DENNIS	LASALLE, COLO.	BLOCK 16 SE 1/4 SEC. 31	0.021	0.021	0.021		
4	SERAPHINE PERALEZ & SIMONA J. PERALEZ	LASALLE, COLO.	BLOCK 16 SE 1/4 SEC. 31	0.021	0.021	0.021		
5	RAMON JOJOLA & ANTONIA M. JOJOLA	BOX 218 LASALLE, COLO.	BLOCK 16 SE 1/4 SEC. 31	0.021	0.021	0.021		
6	CONSUELO P. VIGIL & VINCENT G. VIGIL	LASALLE, COLO.	BLOCK 16 SE 1/4 SEC. 31	0.041	0.041	0.041		
7	GRACE ARAGON	LASALLE, COLO.	BLOCK 15 SE 1/4 SEC. 31	0.095	0.095	0.095		
8	J.A. BEHRENS	BOX 155 LASALLE, COLO.	BLOCK 15 SE 1/4 SEC. 31	0.079	0.079	0.079		
9	WILFORD R. JOHNSTON & SUZANNE F. JOHNSTON	LASALLE, COLO.	BLOCK 12 SE 1/4 SEC. 31	0.021	0.021	0.021		
10	MRS. CLARA A. ESTES	% MRS. CHAS. TIM, 1756 GRANT, DENVER	BLOCK 12 SE 1/4 SEC. 31	0.021	0.021	0.021		
11	MOLLIE ARAGON & JOSEPH T. ARAGON		BLOCK 12 SE 1/4 SEC. 31	0.021	0.021	0.021		
12	EVERETT ARAGON	LASALLE, COLO.	BLOCK 12 SE 1/4 SEC. 31	0.021	0.021	0.021		
13	BOSE HAYES & HELEN C. HAYES	EVANS, COLO.	BLOCK 12 SE 1/4 SEC. 31	0.021	0.021	0.021		
14	MORRIS FEYGIN & JEAN FEYGIN	LASALLE, COLO.	BLOCK 12 SE 1/4 SEC. 31	0.062	0.062	0.062		
15	MARSHALL J. FREEMAN & ESTHER K. FREEMAN	LASALLE, COLO.	BLOCK 13 SE 1/4 SEC. 31	0.079	0.079	0.079		
16	BENJAMIN H. CADE & FREEDA N. CADE	LASALLE, COLO.	BLOCK 13 SE 1/4 SEC. 31	0.079	0.079	0.079		
17	O.R. REED & MAURICE McMAHAN	LASALLE, COLO.	BLOCK 11 SE 1/4 SEC. 31	0.083	0.083	0.083		
18	ELMER H. CROISSANT & ORLENE CROISSANT	LASALLE, COLO.	BLOCK 11 SE 1/4 SEC. 31	0.021	0.021	0.021		
19	JEAN H. BROWN & E.V. BROWN	LASALLE, COLO.	BLOCK 11 SE 1/4 SEC. 31	0.062	0.062	0.062		
20	ELDON F. CLAAR & HELEN H. CLAAR	621-13 24 STREET, GREELEY, COLO.	TOWN OF LASALLE BLOCK 3 SE 1/4 SEC. 31	0.006	0.006	0.006		
21	W.S. FISHER & JACK FISHER	LASALLE, COLO.	BLOCK 3 SE 1/4 SEC. 31	0.006	0.006	0.006		
22	UNION PACIFIC RAILROAD COMPANY		BLOCK 3 SE 1/4 SEC. 31	0.163	0.163	0.076		

R.O.W. TABULATION OF PROPERTIES IN WELD COUNTY S.H.No. 3 PROJ. BF 006-1(15)

FEDERAL ROAD DIVISION NO. 9 DISTRICT COLORADO PROJ. NO. BF006-1(15) SHEET NO. 2A TOTAL SHEETS

RIGHT OF WAY Rev. 2-16-56 R.E.C. Rev. 3-9-56 T.L.K. Rev. 12-11-59 Access deeds R.E.C.

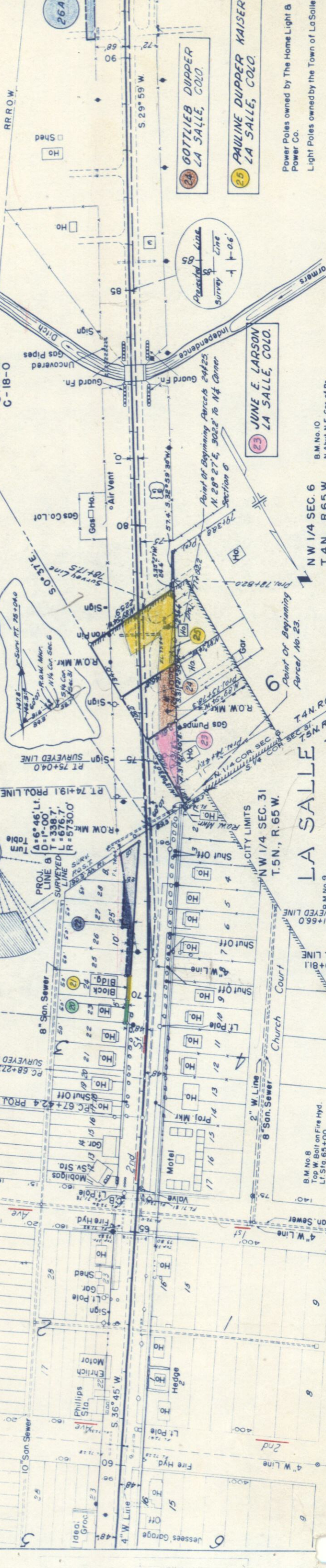
PARCEL NO.	OWNER	ADDRESS	LOCATION	AREA		ACRES TO BE ACQUIRED	REMARKS	NO.
				TOTAL LAND IN TRACT	IN PARCEL			
			T. 4 N., R. 65 W.					
23.	JUNE E. LARSON	LA SALLE, COLO.	NE 1/4 NW 1/4 Sec. 6	0.925	0.126	0.111		
24.	GOTTLIEB DUPPER	LA SALLE, COLO.	NE 1/4 NW 1/4 Sec. 6	0.459	0.277	0.113		
25.	PAULINE DUPPER KAISER	LA SALLE, COLO.	NE 1/4 NW 1/4 Sec. 6	0.833	0.582	0.276		
26A	JACK FISHER	LA SALLE, COLO.	NW 1/4 Sec. 6	2.6 +	0.144	0.144		
26 Rev.	COLORADO FERTILIZER & CHEMICAL CO.		NW 1/4 Sec. 6		0.187	0.187		
27.	UNION PACIFIC RAILROAD COMPANY		SW 1/4 Sec. 6	30.658 +	6.007	0.845		
27A	UNION PACIFIC RAILROAD COMPANY		SW 1/4 Sec. 6		1.358	0.012		
28.	ANTON KRAMER & MARGARET KRAMER	LA SALLE, COLO.	1/2 SW 1/4 Sec. 6	3	0.133	0.133		
			T. 4 N., R. 66 W.					
29.	SIDNEY A. EMESON & STANLEY E. EMESON	LA SALLE, COLO.	SE 1/4 SE 1/4 Sec. 1	36.65 +	0.272	0.262		
30.	UNION PACIFIC RAILROAD COMPANY		SE 1/4 SE 1/4 Sec. 1	2.836 +	2.690	0		
31.	UNION PACIFIC RAILROAD COMPANY		Sec. 12	25.316 +	24.989	13.173		
32.	UNION PACIFIC RAILROAD COMPANY		NW 1/4 NW 1/4 Sec. 13	1.033 +	1.001	0.321		
33.	LOUIS DINNER & IDA DINNER	1814 14th AVE., GREELEY, COLO.	NW 1/4 NW 1/4 Sec. 13	38 +	0.125	0.046		
34.	UNION PACIFIC RAILROAD COMPANY		Sec. 14	23.223 +	14.105	8.445		
35	UNION PACIFIC RAILROAD COMPANY		Sec. 14		9.4	5.6		
E-1	HARRIET J. BLAKE	Rt. 2 LASALLE, COLO.	SW 1/4 Sec. 12		0.599	0.599		
E-2	JOE B. PUMPHREY & LAURA PUMPHREY	SW of LASALLE, COLO.	SW 1/4 NE 1/4 Sec. 14		0.080	0.080		
31A	CONRAD H. HUFF & ELIZABETH HUFF 3/4, LEROY K. HUFF & PHYLLIS HUFF 1/4.						Access deed only	
31C	HUGH E. MCCARTHY						" " "	
31E	HARRIET J. BLAKE						" " "	
34A	WILL H. EWING & MARY F. EWING						" " "	
34C	JOE PUMPHREY & LAURA PUMPHREY						" " "	
34E	FRANK A. ECKHARDT & LILLIE M. ECKHARDT						" " "	



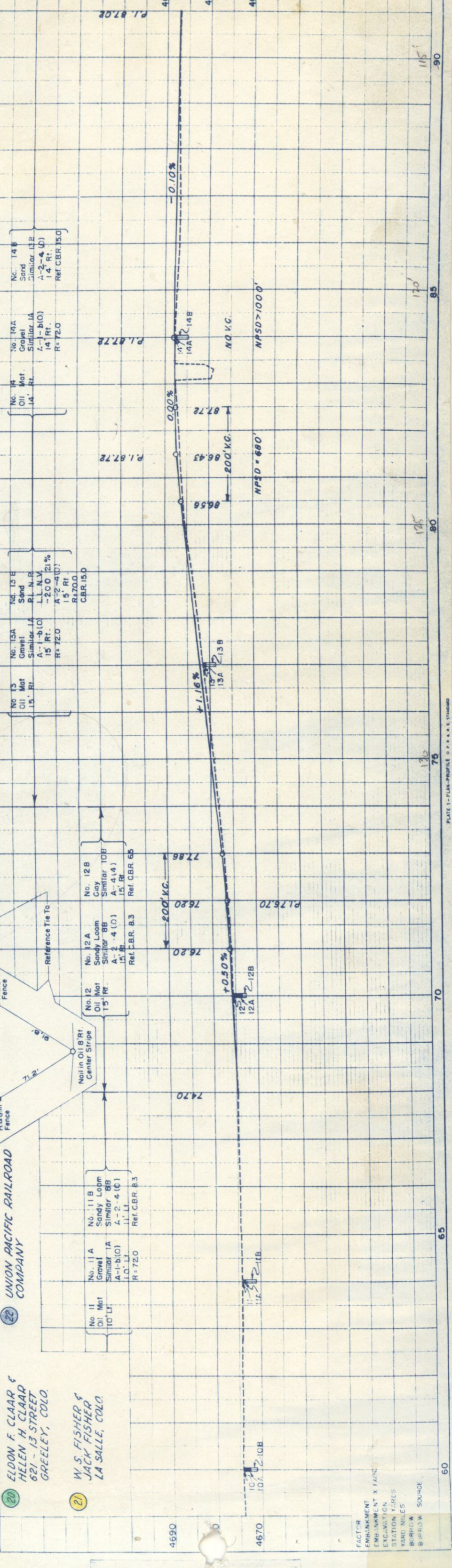
RIGHT OF WAY

FED. ROAD DIST. NO. 9  
 PROJ. NO. BF006-1(15)  
 SHEET NO. 4  
 COLO. DIST. CO. BF006-1(15)  
 TOTAL SHEETS 4

Rev. 3-9-56 T.L.K.  
 (Add Parcel 26A)

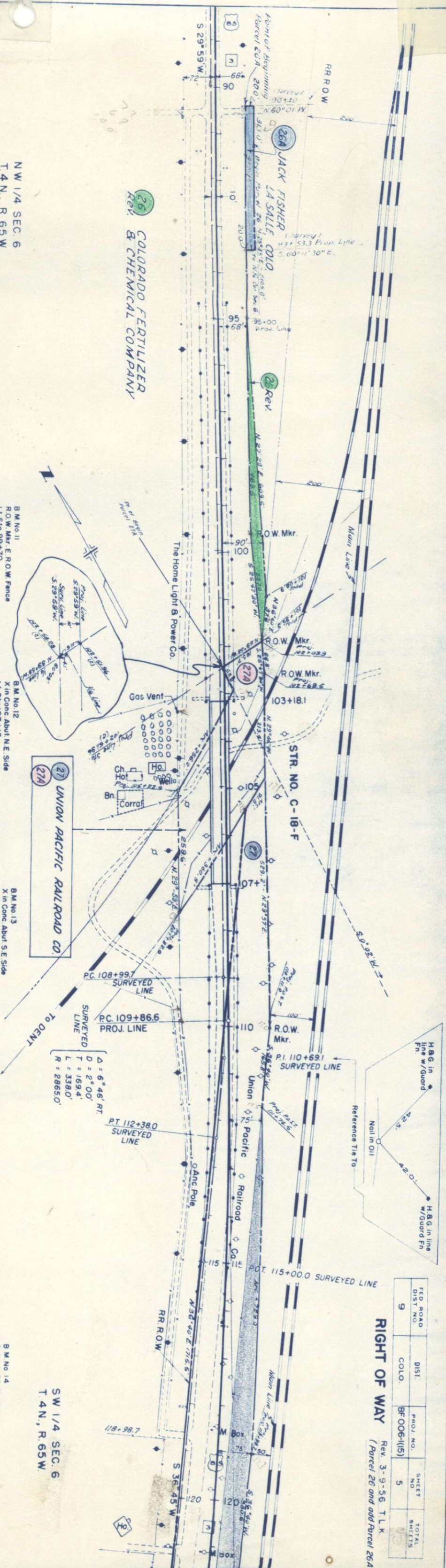


Power Poles owned by The Home Light & Power Co.  
 Light Poles owned by the Town of La Salle.



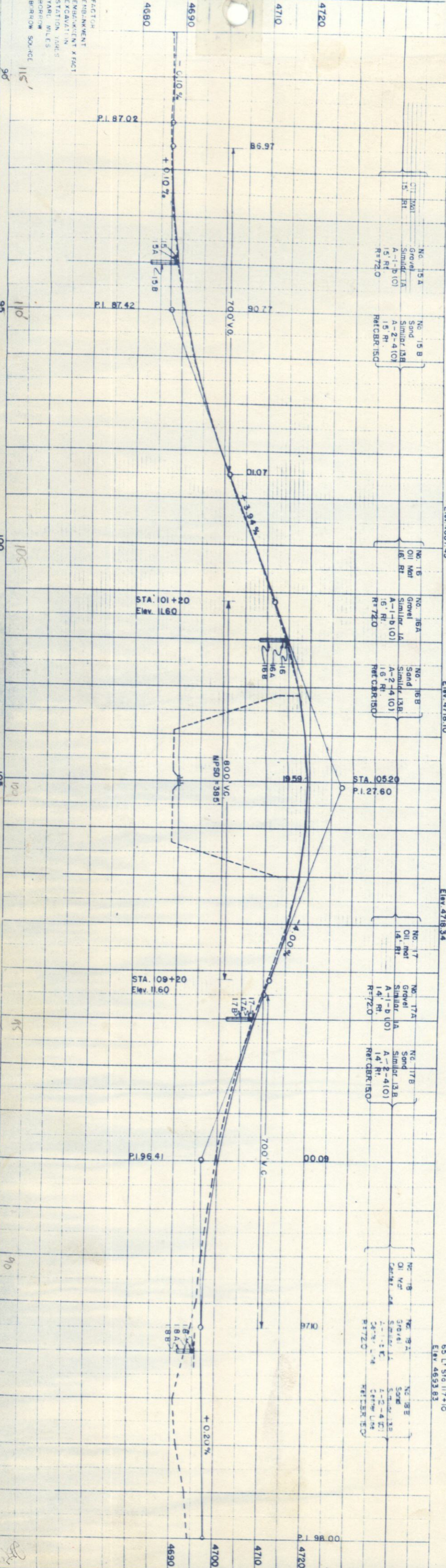
REG. ROAD DIST. NO.	DIST. COLO.	PROJ. NO.	SHEET NO.	TOTAL SHEETS
9		BF006-(15)	5	

**RIGHT OF WAY** Rev. 3-9-56 T.L.K. (Parcel 26 and add Parcel 26A)



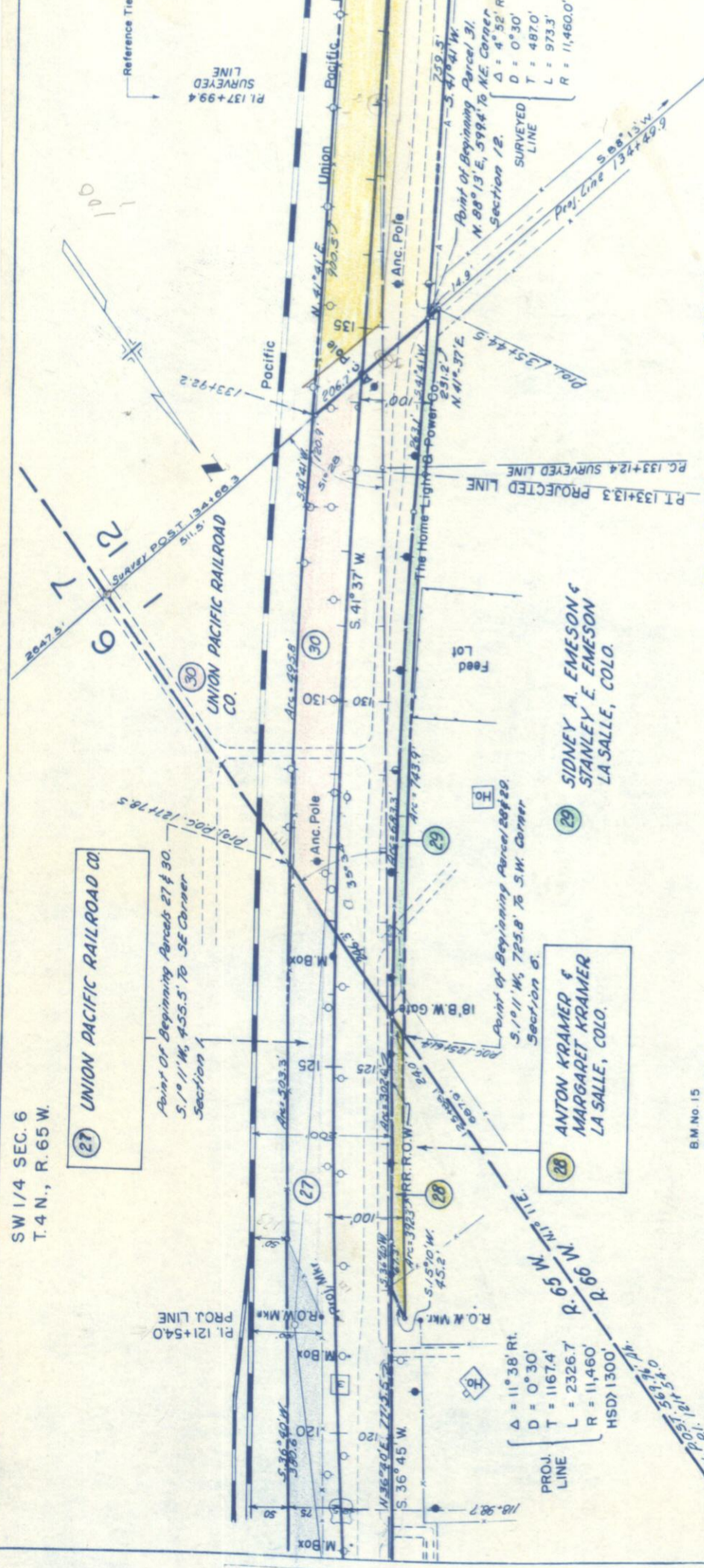
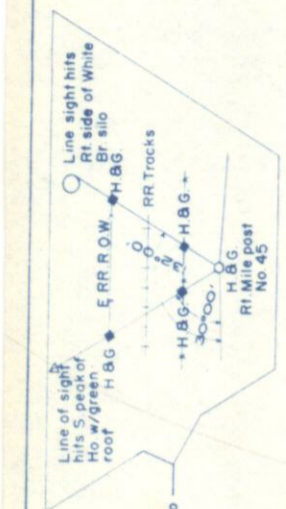
SW 1/4 SEC. 6  
T. 4N., R. 65W.

NW 1/4 SEC. 6  
T. 4N., R. 65W.



FED. ROAD DIST. NO.	9	DIST.	COLO.	PROJ. NO.	BFO06-1(5)	SHEET NO.	6	TOTAL SHEETS	
---------------------	---	-------	-------	-----------	------------	-----------	---	--------------	--

NE 1/4 SEC. 12  
T. 4 N., R. 66 W.



SW 1/4 SEC. 6  
T. 4 N., R. 65 W.

SW 1/4 SEC. 6  
T. 4 N., R. 65 W.

SW 1/4 SEC. 6  
T. 4 N., R. 65 W.

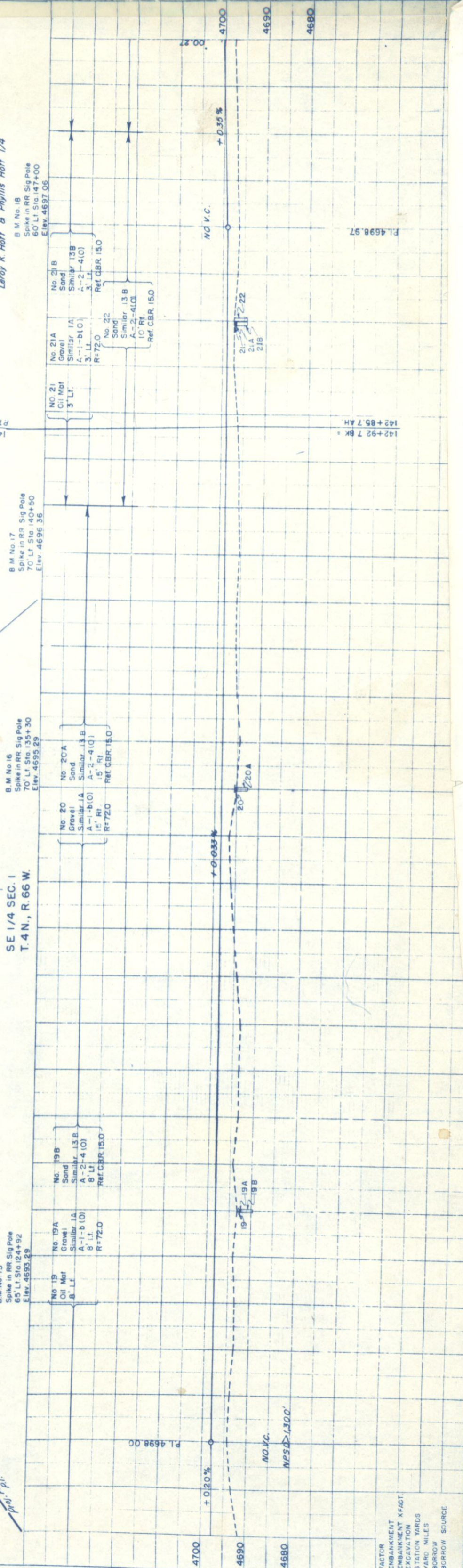
PLAN  
H.L. Dietrich 11-53  
R.C. Parsons 12-53  
H.L. Dietrich 2-54

SIDNEY A. EMESON &  
STANLEY E. EMESON  
LA SALLE, COLO.

ANTON KRAMER &  
MARGARET KRAMER  
LA SALLE, COLO.

UNION PACIFIC RAILROAD CO.

31A Access only  
Conrad H. Hoff & Elizabeth Hoff 3/4,  
Leroy K. Hoff & Phyllis Hoff 1/4



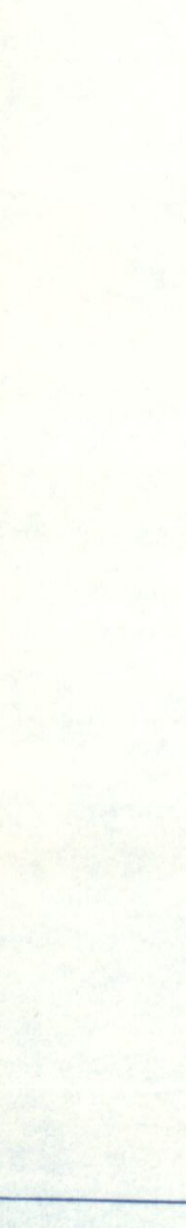
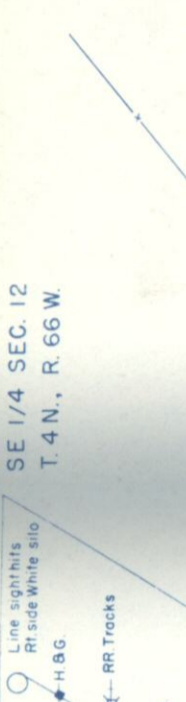
PROFILE  
H.L. Dietrich 12-53  
Winters 1-54  
H.L. Dietrich 2-54

FACTOR  
EMBANKMENT  
EXCAVATION  
STATION YARDS  
YARD MILES  
BORROW SOURCE

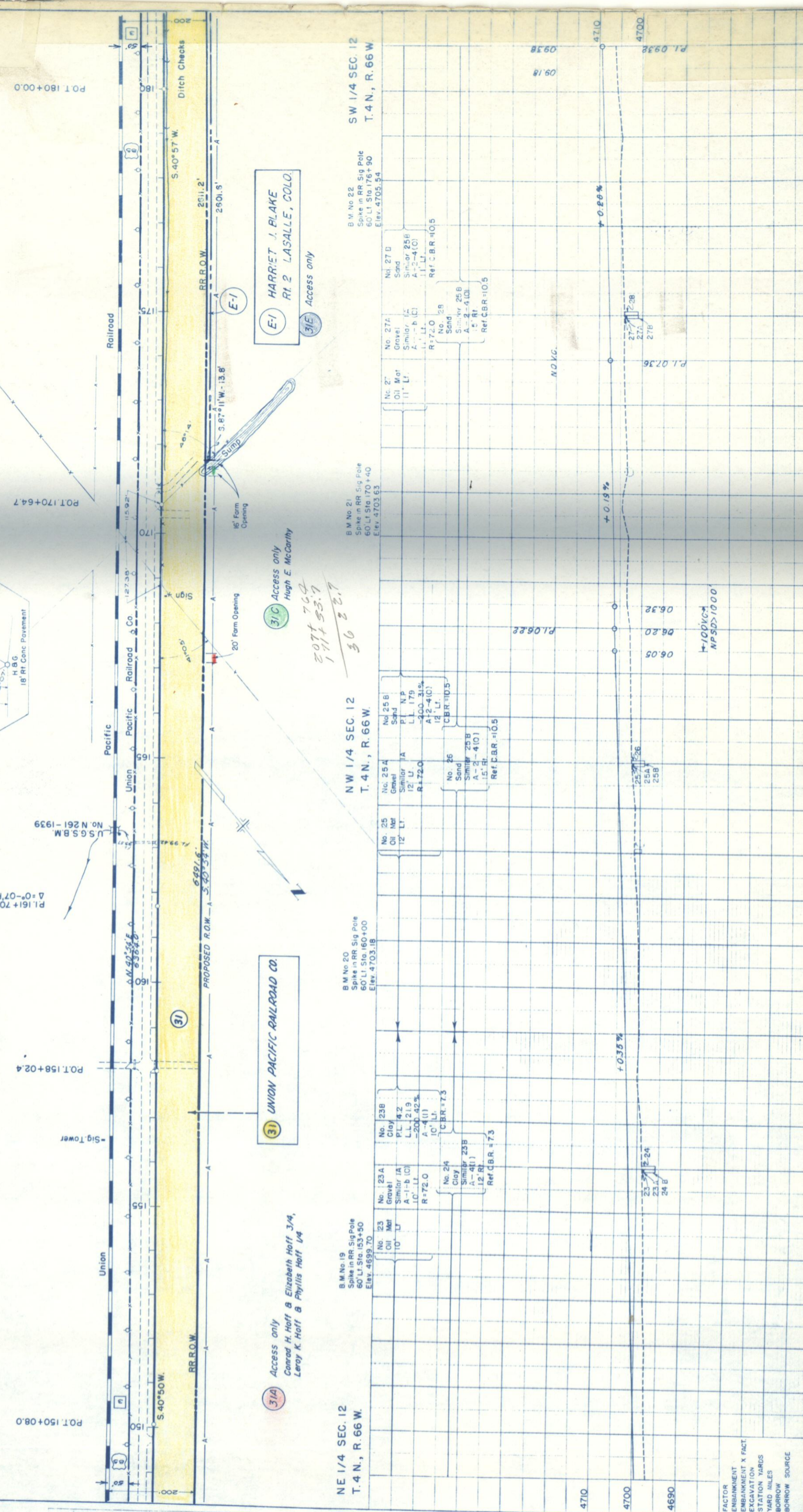
Rev. 2-16-56 added E-1 R.E.C.  
 Rev. 12-11-59 access R.E.C.

FIELD NO.	PROJ. NO.	TOTAL SHEETS
9	BFO06-1(15)	7

SE 1/4 SEC. 12  
 T. 4 N., R. 66 W.



Rev. 12-11-59 access R.E.C.



SW 1/4 SEC. 12  
 T. 4 N., R. 66 W.

NW 1/4 SEC. 12  
 T. 4 N., R. 66 W.

NE 1/4 SEC. 12  
 T. 4 N., R. 66 W.

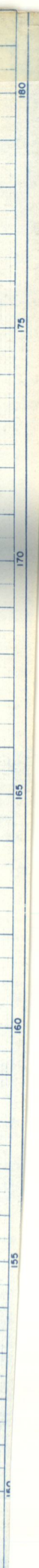
No.	Material	Thickness	CBR
No. 27A	Gravel	11" Lt.	Ref. CBR = 10.5
No. 27B	Oil Mat	11" Lt.	Ref. CBR = 10.5
No. 27C	Gravel	11" Lt.	Ref. CBR = 10.5
No. 27D	Oil Mat	11" Lt.	Ref. CBR = 10.5
No. 27E	Gravel	11" Lt.	Ref. CBR = 10.5
No. 27F	Oil Mat	11" Lt.	Ref. CBR = 10.5
No. 27G	Gravel	11" Lt.	Ref. CBR = 10.5
No. 27H	Oil Mat	11" Lt.	Ref. CBR = 10.5
No. 27I	Gravel	11" Lt.	Ref. CBR = 10.5
No. 27J	Oil Mat	11" Lt.	Ref. CBR = 10.5
No. 27K	Gravel	11" Lt.	Ref. CBR = 10.5
No. 27L	Oil Mat	11" Lt.	Ref. CBR = 10.5
No. 27M	Gravel	11" Lt.	Ref. CBR = 10.5
No. 27N	Oil Mat	11" Lt.	Ref. CBR = 10.5
No. 27O	Gravel	11" Lt.	Ref. CBR = 10.5
No. 27P	Oil Mat	11" Lt.	Ref. CBR = 10.5
No. 27Q	Gravel	11" Lt.	Ref. CBR = 10.5
No. 27R	Oil Mat	11" Lt.	Ref. CBR = 10.5
No. 27S	Gravel	11" Lt.	Ref. CBR = 10.5
No. 27T	Oil Mat	11" Lt.	Ref. CBR = 10.5
No. 27U	Gravel	11" Lt.	Ref. CBR = 10.5
No. 27V	Oil Mat	11" Lt.	Ref. CBR = 10.5
No. 27W	Gravel	11" Lt.	Ref. CBR = 10.5
No. 27X	Oil Mat	11" Lt.	Ref. CBR = 10.5
No. 27Y	Gravel	11" Lt.	Ref. CBR = 10.5
No. 27Z	Oil Mat	11" Lt.	Ref. CBR = 10.5

No.	Material	Thickness	CBR
No. 25A	Gravel	12" Lt.	Ref. CBR = 10.5
No. 25B	Oil Mat	12" Lt.	Ref. CBR = 10.5
No. 25C	Gravel	12" Lt.	Ref. CBR = 10.5
No. 25D	Oil Mat	12" Lt.	Ref. CBR = 10.5
No. 25E	Gravel	12" Lt.	Ref. CBR = 10.5
No. 25F	Oil Mat	12" Lt.	Ref. CBR = 10.5
No. 25G	Gravel	12" Lt.	Ref. CBR = 10.5
No. 25H	Oil Mat	12" Lt.	Ref. CBR = 10.5
No. 25I	Gravel	12" Lt.	Ref. CBR = 10.5
No. 25J	Oil Mat	12" Lt.	Ref. CBR = 10.5
No. 25K	Gravel	12" Lt.	Ref. CBR = 10.5
No. 25L	Oil Mat	12" Lt.	Ref. CBR = 10.5
No. 25M	Gravel	12" Lt.	Ref. CBR = 10.5
No. 25N	Oil Mat	12" Lt.	Ref. CBR = 10.5
No. 25O	Gravel	12" Lt.	Ref. CBR = 10.5
No. 25P	Oil Mat	12" Lt.	Ref. CBR = 10.5
No. 25Q	Gravel	12" Lt.	Ref. CBR = 10.5
No. 25R	Oil Mat	12" Lt.	Ref. CBR = 10.5
No. 25S	Gravel	12" Lt.	Ref. CBR = 10.5
No. 25T	Oil Mat	12" Lt.	Ref. CBR = 10.5
No. 25U	Gravel	12" Lt.	Ref. CBR = 10.5
No. 25V	Oil Mat	12" Lt.	Ref. CBR = 10.5
No. 25W	Gravel	12" Lt.	Ref. CBR = 10.5
No. 25X	Oil Mat	12" Lt.	Ref. CBR = 10.5
No. 25Y	Gravel	12" Lt.	Ref. CBR = 10.5
No. 25Z	Oil Mat	12" Lt.	Ref. CBR = 10.5

No.	Material	Thickness	CBR
No. 23A	Gravel	10" Lt.	Ref. CBR = 7.3
No. 23B	Oil Mat	10" Lt.	Ref. CBR = 7.3
No. 23C	Gravel	10" Lt.	Ref. CBR = 7.3
No. 23D	Oil Mat	10" Lt.	Ref. CBR = 7.3
No. 23E	Gravel	10" Lt.	Ref. CBR = 7.3
No. 23F	Oil Mat	10" Lt.	Ref. CBR = 7.3
No. 23G	Gravel	10" Lt.	Ref. CBR = 7.3
No. 23H	Oil Mat	10" Lt.	Ref. CBR = 7.3
No. 23I	Gravel	10" Lt.	Ref. CBR = 7.3
No. 23J	Oil Mat	10" Lt.	Ref. CBR = 7.3
No. 23K	Gravel	10" Lt.	Ref. CBR = 7.3
No. 23L	Oil Mat	10" Lt.	Ref. CBR = 7.3
No. 23M	Gravel	10" Lt.	Ref. CBR = 7.3
No. 23N	Oil Mat	10" Lt.	Ref. CBR = 7.3
No. 23O	Gravel	10" Lt.	Ref. CBR = 7.3
No. 23P	Oil Mat	10" Lt.	Ref. CBR = 7.3
No. 23Q	Gravel	10" Lt.	Ref. CBR = 7.3
No. 23R	Oil Mat	10" Lt.	Ref. CBR = 7.3
No. 23S	Gravel	10" Lt.	Ref. CBR = 7.3
No. 23T	Oil Mat	10" Lt.	Ref. CBR = 7.3
No. 23U	Gravel	10" Lt.	Ref. CBR = 7.3
No. 23V	Oil Mat	10" Lt.	Ref. CBR = 7.3
No. 23W	Gravel	10" Lt.	Ref. CBR = 7.3
No. 23X	Oil Mat	10" Lt.	Ref. CBR = 7.3
No. 23Y	Gravel	10" Lt.	Ref. CBR = 7.3
No. 23Z	Oil Mat	10" Lt.	Ref. CBR = 7.3

No.	Material	Thickness	CBR
No. 24	Clay	12" Lt.	Ref. CBR = 7.3
No. 24A	Clay	12" Lt.	Ref. CBR = 7.3
No. 24B	Clay	12" Lt.	Ref. CBR = 7.3
No. 24C	Clay	12" Lt.	Ref. CBR = 7.3
No. 24D	Clay	12" Lt.	Ref. CBR = 7.3
No. 24E	Clay	12" Lt.	Ref. CBR = 7.3
No. 24F	Clay	12" Lt.	Ref. CBR = 7.3
No. 24G	Clay	12" Lt.	Ref. CBR = 7.3
No. 24H	Clay	12" Lt.	Ref. CBR = 7.3
No. 24I	Clay	12" Lt.	Ref. CBR = 7.3
No. 24J	Clay	12" Lt.	Ref. CBR = 7.3
No. 24K	Clay	12" Lt.	Ref. CBR = 7.3
No. 24L	Clay	12" Lt.	Ref. CBR = 7.3
No. 24M	Clay	12" Lt.	Ref. CBR = 7.3
No. 24N	Clay	12" Lt.	Ref. CBR = 7.3
No. 24O	Clay	12" Lt.	Ref. CBR = 7.3
No. 24P	Clay	12" Lt.	Ref. CBR = 7.3
No. 24Q	Clay	12" Lt.	Ref. CBR = 7.3
No. 24R	Clay	12" Lt.	Ref. CBR = 7.3
No. 24S	Clay	12" Lt.	Ref. CBR = 7.3
No. 24T	Clay	12" Lt.	Ref. CBR = 7.3
No. 24U	Clay	12" Lt.	Ref. CBR = 7.3
No. 24V	Clay	12" Lt.	Ref. CBR = 7.3
No. 24W	Clay	12" Lt.	Ref. CBR = 7.3
No. 24X	Clay	12" Lt.	Ref. CBR = 7.3
No. 24Y	Clay	12" Lt.	Ref. CBR = 7.3
No. 24Z	Clay	12" Lt.	Ref. CBR = 7.3

No.	Material	Thickness	CBR
No. 25	Oil Mat	12" Lt.	Ref. CBR = 10.5
No. 25A	Oil Mat	12" Lt.	Ref. CBR = 10.5
No. 25B	Oil Mat	12" Lt.	Ref. CBR = 10.5
No. 25C	Oil Mat	12" Lt.	Ref. CBR = 10.5
No. 25D	Oil Mat	12" Lt.	Ref. CBR = 10.5
No. 25E	Oil Mat	12" Lt.	Ref. CBR = 10.5
No. 25F	Oil Mat	12" Lt.	Ref. CBR = 10.5
No. 25G	Oil Mat	12" Lt.	Ref. CBR = 10.5
No. 25H	Oil Mat	12" Lt.	Ref. CBR = 10.5
No. 25I	Oil Mat	12" Lt.	Ref. CBR = 10.5
No. 25J	Oil Mat	12" Lt.	Ref. CBR = 10.5
No. 25K	Oil Mat	12" Lt.	Ref. CBR = 10.5
No. 25L	Oil Mat	12" Lt.	Ref. CBR = 10.5
No. 25M	Oil Mat	12" Lt.	Ref. CBR = 10.5
No. 25N	Oil Mat	12" Lt.	Ref. CBR = 10.5
No. 25O	Oil Mat	12" Lt.	Ref. CBR = 10.5
No. 25P	Oil Mat	12" Lt.	Ref. CBR = 10.5
No. 25Q	Oil Mat	12" Lt.	Ref. CBR = 10.5
No. 25R	Oil Mat	12" Lt.	Ref. CBR = 10.5
No. 25S	Oil Mat	12" Lt.	Ref. CBR = 10.5
No. 25T	Oil Mat	12" Lt.	Ref. CBR = 10.5
No. 25U	Oil Mat	12" Lt.	Ref. CBR = 10.5
No. 25V	Oil Mat	12" Lt.	Ref. CBR = 10.5
No. 25W	Oil Mat	12" Lt.	Ref. CBR = 10.5
No. 25X	Oil Mat	12" Lt.	Ref. CBR = 10.5
No. 25Y	Oil Mat	12" Lt.	Ref. CBR = 10.5
No. 25Z	Oil Mat	12" Lt.	Ref. CBR = 10.5



NE 1/4 SEC. 12  
 T. 4 N., R. 66 W.

NW 1/4 SEC. 12  
 T. 4 N., R. 66 W.

SW 1/4 SEC. 12  
 T. 4 N., R. 66 W.

SE 1/4 SEC. 12  
 T. 4 N., R. 66 W.

Access only  
 Union Pacific Railroad Co.

Access only  
 H. J. Blakely & Elizabeth Hoff 3/4,  
 Leroy K. Hoff & Phyllis Hoff 1/4

Access only  
 H. J. Blakely  
 Rt. 2 Lasalle, Colo.

Access only  
 Hugh E. McCarthy

Access only  
 30 2 2.7

Access only  
 3077 76.9  
 1114 53.7

Access only  
 31C

Access only  
 31E

Access only  
 31A

Access only  
 31B

Access only  
 31D

Access only  
 31F

Access only  
 31G

Access only  
 31H

Access only  
 31I

Access only  
 31J

Access only  
 31K

Access only  
 31L

Access only  
 31M

Access only  
 31N

Access only  
 31O

Access only  
 31P

Access only  
 31Q

Access only  
 31R

Access only  
 31S

Access only  
 31T

Access only  
 31U

Access only  
 31V

Access only  
 31W

Access only  
 31X

Access only  
 31Y

Access only  
 31Z

Rev. 2-16-56 added E-1 R.E.C.  
 Rev. 12-11-59 access R.E.C.

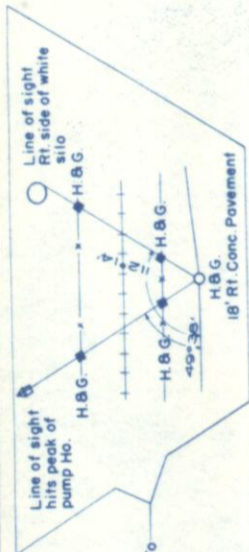
FED. ROAD DIST. NO.	9	DIST.	COLO.	PROJ. NO.	BF006-1(15)	SHEET NO.	8	TOTAL SHEETS	
---------------------	---	-------	-------	-----------	-------------	-----------	---	--------------	--

**RIGHT OF WAY**

NW 1/4 SEC. 13  
 T. 4 N., R. 66 W.

P.O.T. 200+00.0

P.O.T. 180+00.0



US M-261  
 US 55  
 US 58  
 US 59

US M-261

US 55

US 58

US 59

US M-261

US 55

US 58

US 59

US M-261

US 55

US 58

US 59

US M-261

US 55

US 58

US 59

US M-261

US 55

US 58

US 59

US M-261

US 55

US 58

US 59

US M-261

US 55

US 58

US 59

US M-261

US 55

US 58

US 59

US M-261

US 55

US 58

US 59

US M-261

US 55

US 58

US 59

US M-261

US 55

US 58

US 59

US M-261

US 55

US 58

US 59

US M-261

US 55

US 58

US 59

US M-261

US 55

US 58

US 59

US M-261

US 55

US 58

US 59

US M-261

US 55

US 58

US 59

US M-261

US 55

US 58

US 59

US M-261

US 55

US 58

US 59

US M-261

US 55

US 58

US 59

US M-261

US 55

US 58

US 59

US M-261

US 55

US 58

US 59

US M-261

US 55

US 58

US 59

US M-261

US 55

US 58

US 59

US M-261

US 55

US 58

US 59

US M-261

US 55

US 58

US 59

US M-261

US 55

US 58

US 59

US M-261

US 55

US 58

US 59

US M-261

US 55

US 58

US 59

US M-261

US 55

US 58

US 59

US M-261

US 55

US 58

US 59

US M-261

US 55

US 58

US 59

US M-261

US 55

US 58

US 59

US M-261

US 55

US 58

US 59

US M-261

US 55

US 58

US 59

US M-261

US 55

US 58

US 59

US M-261

US 55

US 58

US 59

US M-261

US 55

US 58

US 59

US M-261

US 55

US 58

US 59

US M-261

US 55

US 58

US 59

US M-261

US 55

US 58

US 59

US M-261

US 55

US 58

US 59

US M-261

US 55

US 58

US 59

US M-261

US 55

US 58

US 59

US M-261

US 55

US 58

US 59

US M-261

US 55

US 58

US 59

US M-261

US 55

US 58

US 59

US M-261

US 55

US 58

US 59

US M-261

US 55

US 58

US 59

US M-261

US 55

US 58

US 59

US M-261

US 55

US 58

US 59

US M-261

US 55

US 58

US 59

US M-261

US 55

US 58

US 59

US M-261

US 55

US 58

US 59

US M-261

US 55

US 58

US 59

US M-261

US 55

US 58

US 59

US M-261

US 55

US 58

US 59

US M-261

US 55

US 58

US 59

US M-261

US 55

US 58

US 59

US M-261

US 55

US 58

US 59

US M-261

US 55

US 58

US 59

US M-261

US 55

US 58

US 59

US M-261

US 55

US 58

US 59

US M-261

US 55

US 58

US 59

US M-261

US 55

US 58

US 59

US M-261

US 55

US 58

US 59

US M-261

US 55

US 58

US 59

US M-261

US 55

US 58

US 59

US M-261

US 55

US 58

US 59

US M-261

US 55

US 58

US 59

US M-261

US 55

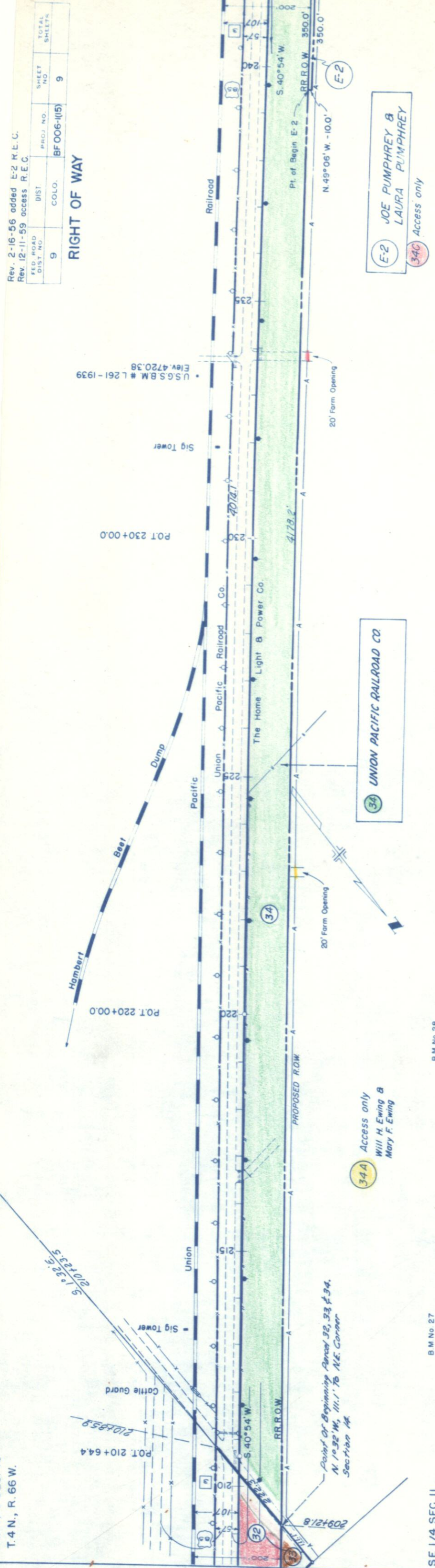
US 58

US 59

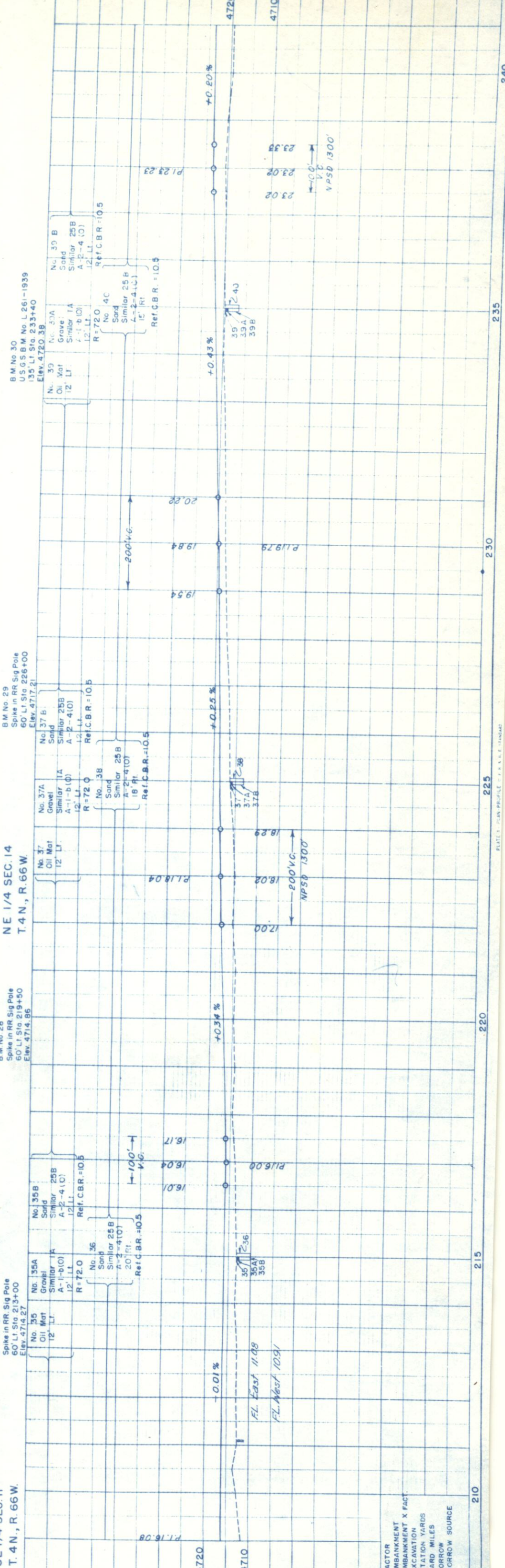
US M-261

US 55

US 58



DATE	12-53
BY	H. Dieterich
CHECKED	B. G. ...
APPROVED	
NOTED	
REVISIONS	
NO.	1
DESCRIPTION	PLAN



DATE	12-53
BY	H. Dieterich
CHECKED	B. G. ...
APPROVED	
NOTED	
REVISIONS	
NO.	1
DESCRIPTION	PROFILE

SE 1/4 SEC. II  
 T.4N., R.66W.

NE 1/4 SEC. 14  
 T.4N., R.66W.

Access only  
 Will H. Ewing &  
 Mary F. Ewing

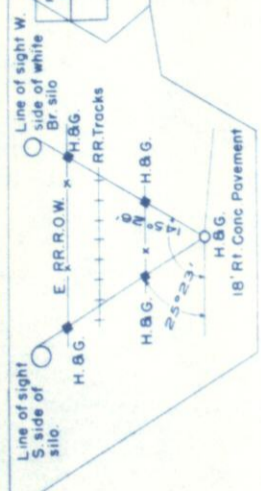
Access only  
 JOE PUMPHREY &  
 LAURA PUMPHREY

UNION PACIFIC RAILROAD CO.

Rev. 2-16-56 added E-2 R.E.C.  
Rev. 12-11-59 access R.E.C.

FED. ROAD DIST. NO.	PROJ. NO.	SHEET NO.	TOTAL SHEETS
9	BF 0061(115)	10	

RIGHT OF WAY



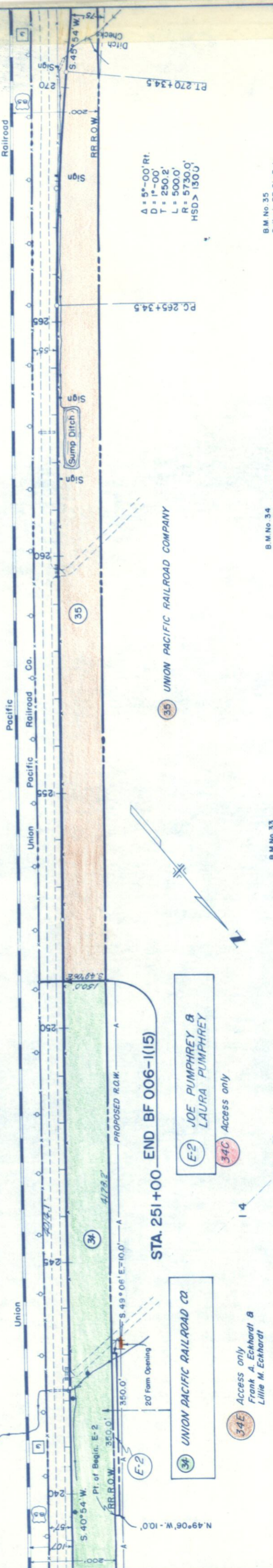
SE 1/4 SEC. 14  
T. 4 N., R. 66 W.

POT 252+30.1

POT 242+28.9

DATE	BY	REVISION
11-53	H.L. Dieterich	1-53
12-53	R.C. Parsons	1-53
2-54	H.L. Dieterich	2-54

DATE	BY	REVISION
11-53	H.L. Dieterich	1-53
12-53	R.C. Parsons	1-53
2-54	H.L. Dieterich	2-54



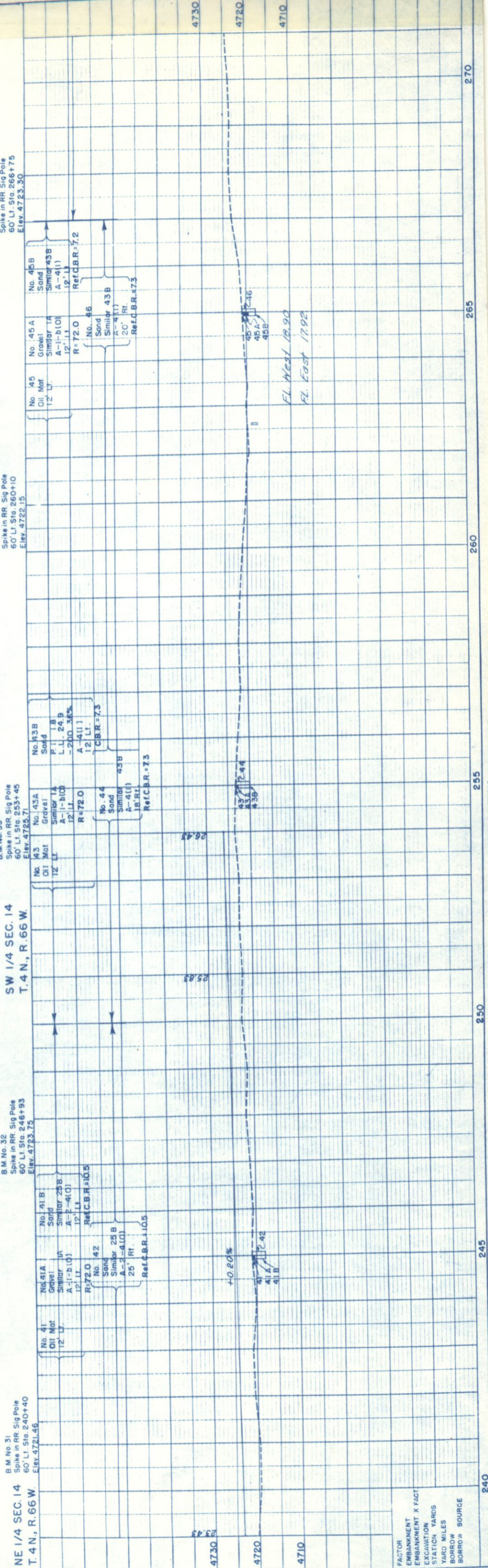
STA. 251+00 END BF 006-1(115)

E-2 JOE PUMPHREY &  
LAURA PUMPHREY  
Access only

34E UNION PACIFIC RAILROAD CO  
Access only  
Frank A. Eckhardt &  
Lillie M. Eckhardt

35 UNION PACIFIC RAILROAD COMPANY

A = 5°-00' Rt.  
D = 1°-00'  
T = 250.2'  
L = 500.0'  
R = 5730.0'  
HSD > 130.0'



B.M. No. 35  
Spike in RR Sig Pole  
60' Lt. Sta. 266+75  
Elev. 4723.30

B.M. No. 34  
Spike in RR Sig Pole  
60' Lt. Sta. 260+10  
Elev. 4722.15

B.M. No. 33  
Spike in RR Sig Pole  
60' Lt. Sta. 253+45  
Elev. 4725.71

B.M. No. 32  
Spike in RR Sig Pole  
60' Lt. Sta. 246+93  
Elev. 4723.75

B.M. No. 31  
Spike in RR Sig Pole  
60' Lt. Sta. 240+40  
Elev. 4721.46

SW 1/4 SEC. 14  
T. 4 N., R. 66 W.

No. 45 B  
Sand  
Similar 43 B  
A-4(1)  
12' Lt.  
R=72.0  
Ref.C.B.R.=7.2

No. 45 A  
Gravel  
Similar 1A  
A-1-b(1)  
12' Lt.  
R=72.0  
No. 46  
Sand  
Similar 43 B  
A-4(1)  
20' Rt.  
Ref.C.B.R.=7.3

No. 45  
Oil Mat  
12' Lt.

No. 43 B  
Solid  
P.I. 1 B  
L.L. 24.9  
-200.36%  
A-4(1)  
12' Lt.  
C.B.R.=7.3

No. 43 A  
Gravel  
Similar 1A  
A-1-b(1)  
12' Lt.  
R=72.0  
No. 44  
Sand  
Similar 43 B  
A-4(1)  
18' Rt.  
Ref.C.B.R.=7.3

No. 43  
Oil Mat  
12' Lt.

No. 41 B  
Sand  
Similar 25 B  
A-2-4(1)  
12' Lt.  
R=72.0  
Ref.C.B.R.=10.5

No. 41 A  
Gravel  
Similar 1A  
A-1-b(1)  
12' Lt.  
R=72.0  
No. 42  
Sand  
Similar 25 B  
A-2-4(1)  
25' Rt.  
Ref.C.B.R.=10.5

No. 41  
Oil Mat  
12' Lt.

4730

4720

4710

240

245

250

255

260

265

270

4730

4720

4710

4700

FL West 18.90

FL East 17.92

45A

45B

43A

43B

43C

43D

43E

43F

43G

43H

43I

43J

43K

43L

43M

43N

43O

43P

43Q

43R

43S

43T

43U

43V

43W

43X

43Y

43Z

43AA

43AB

43AC

43AD

43AE

43AF

43AG

43AH

43AI

43AJ

43AK

43AL

43AM

43AN

43AO

43AP

43AQ

43AR

43AS

43AT

43AU

43AV

43AW

43AX

43AY

43AZ

43BA

43BB

43BC

43BD

43BE

43BF

43BG

43BH

43BI

43BJ

43BK

43BL

43BM

43BN

43BO

43BP

43BQ

43BR

43BS

43BT

43BU

43BV

43BW

43BX

43BY

43BZ

43CA

43CB

43CC

43CD

43CE

43CF

43CG

43CH

43CI

43CJ

43CK

43CL

43CM

43CN

43CO

43CP

43CQ

43CR

43CS

43CT

43CU

43CV

43CW

43CX

43CY

43CZ

43DA

43DB

43DC

43DD

43DE

43DF

43DG

43DH

43DI

43DJ

43DK

43DL

43DM

43DN

43DO

43DP

43DQ

43DR

43DS

43DT

43DU

43DV

43DW

43DX

43DY

43DZ

43EA

43EB

43EC

43ED

43EE

43EF

43EG

43EH

43EI

43EJ

43EK

43EL

43EM

43EN

43EO

43EP

43EQ

43ER

43ES

43ET

43EU

43EV

43EW

43EX

43EY

43EZ

43FA

43FB

43FC

43FD

43FE

43FF

43FG

43FH

43FI

43FJ

43FK

43FL

43FM

43FN

43FO

43FP

43FQ

43FR

43FS

43FT

43FU

43FV

43FW

43FX

43FY

43FZ

43GA

43GB

43GC

43GD

43GE

43GF

43GG

43GH

43GI

43GJ

43GK

43GL

43GM

43GN

43GO

43GP

43GQ

43GR

43GS

43GT

43GU

43GV

43GW

43GX

43GY

43GZ

43HA

43HB

43HC

43HD

43HE

43HF

43HG

43HH

43HI

43HJ

43HK

43HL

43HM

43HN

43HO

43HP

43HQ

43HR

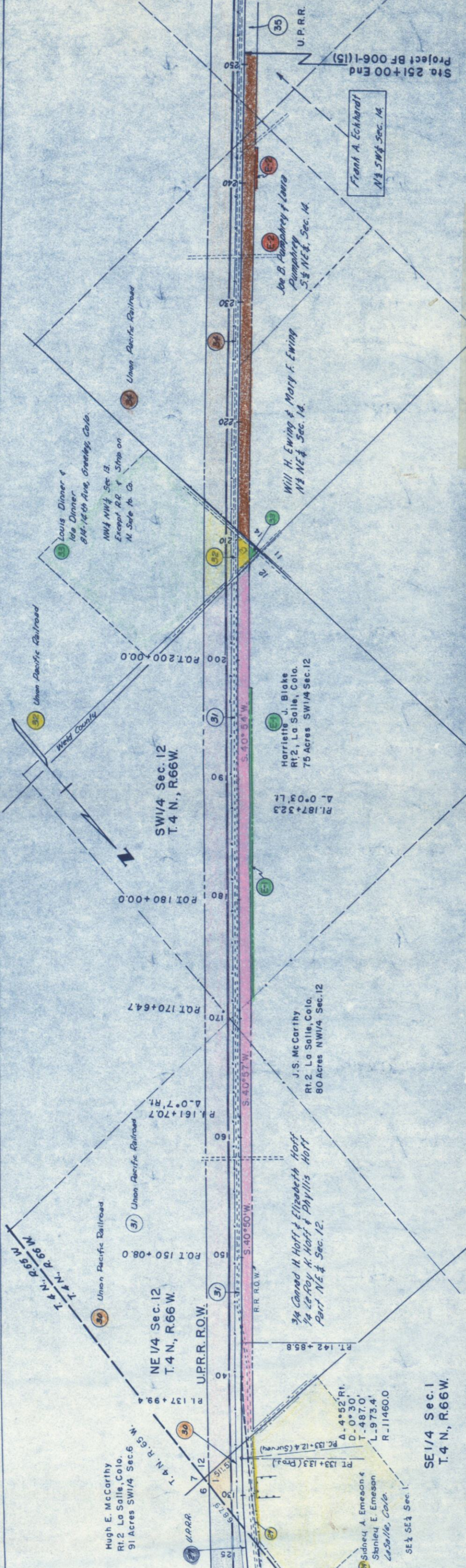
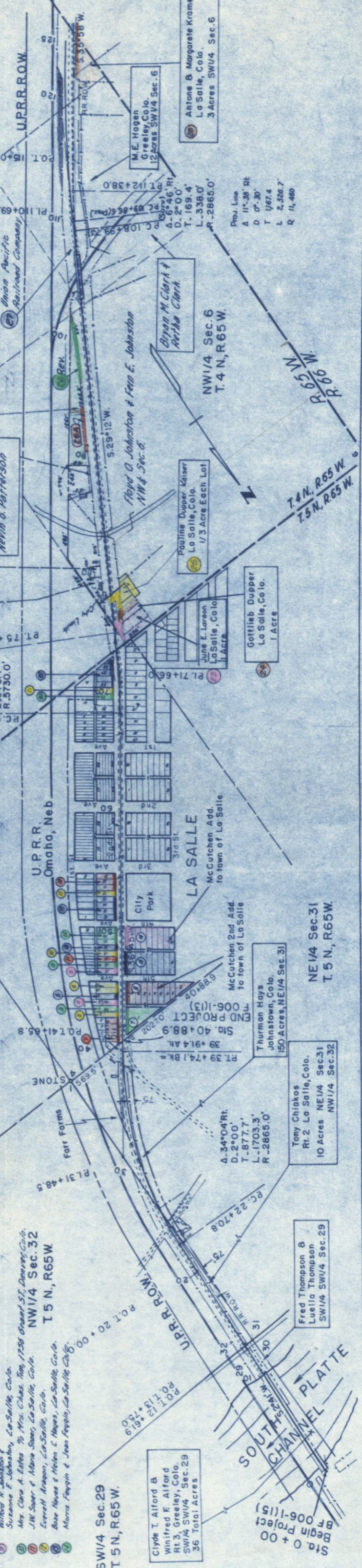
43HS



FED. ROAD DIST. NO.	STATE	PROJ. NO.	SHEET NO.	TOTAL SHEETS
3	COLO.	BF 006-1(15)	12	

**RIGHT OF WAY**  
Rev. 2-16-56 R.E.C.  
Rev. 3-9-56 T.L.K.

**OWNERSHIP MAP PLAT**  
Showing Claimants With Regard to  
Right of Way For Project BF 006-1(15)  
Scale 1" = 400'



- 1. Ditch Oil Co. 1000 Water Street, Denver, Colo.
- 2. Everett Aragon, La Salle, Colo.
- 3. M.E. Benson & Aquiline J. Dennis, La Salle, Colo.
- 4. Serphine Alvarez & Simona J. Alvarez, La Salle, Colo.
- 5. Ramon Juola & Anabela M. Juola, Box 818, La Salle, Colo.
- 6. Cosuebo P. Vigi & Vincent G. Vigi, La Salle, Colo.
- 7. Grace Aragon, La Salle, Colo.
- 8. J.A. Behrens, Box 155, La Salle, Colo.
- 9. Wilford R. Johnston & Suzanne F. Johnston, La Salle, Colo.
- 10. Mrs. Clara A. Estess, Mrs. Mrs. Chas. Tapp, 1758 Grand St., Denver, Colo.
- 11. J.W. Sauer & Marie Sauer, La Salle, Colo.
- 12. Everett Aragon, La Salle, Colo.
- 13. Base House & Helen C. Hayes, La Salle, Colo.
- 14. Morris Flynn & Jean Flynn, La Salle, Colo.

- 15. Marshall J. Freeman & Esther K. Freeman, La Salle, Colo.
- 16. Benjamin H. Cole & Freddie M. Cole, La Salle, Colo.
- 17. O.R. Reed & Maurice McManis, La Salle, Colo.
- 18. Elmer H. Crossman & Orlene Crossman, La Salle, Colo.
- 19. Jean H. Brown & E.V. Brown, La Salle, Colo.
- 20. Elton F. Clear & Helen M. Clear, 621-13th St., Greeley, Colo.
- 21. W.S. Fisher & Jack Fisher, La Salle, Colo.
- 22. Union Pacific Railroad Co.

- 23. Fred Thompson & Luella Thompson, SW 1/4 SW 1/4 Sec. 29
- 24. Clyde T. Alford & Winifred E. Alford, RT. 3, Greeley, Colo. SW 1/4 SW 1/4 Sec. 29
- 25. Hugh E. McCarthy, RT. 2 La Salle, Colo. 91 Acres SW 1/4 Sec. 6
- 26. Fred Thompson & Luella Thompson, SW 1/4 SW 1/4 Sec. 29
- 27. Tony Chikios, RT. 2 La Salle, Colo. 10 Acres NE 1/4 Sec. 31
- 28. Thurman Hoys, Johnston, Colo. 150 Acres NE 1/4 Sec. 31
- 29. Harriette J. Blake, RT. 2, La Salle, Colo. 75 Acres SW 1/4 Sec. 12
- 30. J.S. McCarthy, RT. 2 La Salle, Colo. 80 Acres NW 1/4 Sec. 12
- 31. Conrod H. Hoff & Elizabeth Hoff, 1/4 Le Roy K. Hoff & Phyllis Hoff, Part NE 1/4 Sec. 12
- 32. Will H. Ewing & Mary F. Ewing, NE 1/4 Sec. 14
- 33. Joe B. Pumphrey & Laura Pumphrey, SE 1/4 NE 1/4 Sec. 14
- 34. Front A. Eckhardt, NE 1/4 SW 1/4 Sec. 14

- 35. Louis Dinner & Ida Dinner, 814 1/2th Ave, Greeley, Colo. NW 1/4 NW 1/4 Sec. 13
- 36. Except RR & Strip on N. Side to Co.
- 37. Pauline Dupper Kaiser, La Salle, Colo. 1/3 Acre Each Lot
- 38. June E. Larson, La Salle, Colo. 1/3 Acre
- 39. Gottlieb Dupper, La Salle, Colo. 1 Acre
- 40. Bryan M. Clark & Arther Clark, NW 1/4 Sec. 6
- 41. M.E. Hagen, Greeley, Colo. 12 Acres SW 1/4 Sec. 6
- 42. Antone & Margarete Kramer, La Salle, Colo. 3 Acres SW 1/4 Sec. 6

- 43. Harriette J. Blake, RT. 2, La Salle, Colo. 75 Acres SW 1/4 Sec. 12
- 44. J.S. McCarthy, RT. 2 La Salle, Colo. 80 Acres NW 1/4 Sec. 12
- 45. Conrod H. Hoff & Elizabeth Hoff, 1/4 Le Roy K. Hoff & Phyllis Hoff, Part NE 1/4 Sec. 12
- 46. Will H. Ewing & Mary F. Ewing, NE 1/4 Sec. 14
- 47. Joe B. Pumphrey & Laura Pumphrey, SE 1/4 NE 1/4 Sec. 14
- 48. Front A. Eckhardt, NE 1/4 SW 1/4 Sec. 14
- 49. Louis Dinner & Ida Dinner, 814 1/2th Ave, Greeley, Colo. NW 1/4 NW 1/4 Sec. 13
- 50. Except RR & Strip on N. Side to Co.
- 51. Pauline Dupper Kaiser, La Salle, Colo. 1/3 Acre Each Lot
- 52. June E. Larson, La Salle, Colo. 1/3 Acre
- 53. Gottlieb Dupper, La Salle, Colo. 1 Acre
- 54. Bryan M. Clark & Arther Clark, NW 1/4 Sec. 6
- 55. M.E. Hagen, Greeley, Colo. 12 Acres SW 1/4 Sec. 6
- 56. Antone & Margarete Kramer, La Salle, Colo. 3 Acres SW 1/4 Sec. 6

- 57. Harriette J. Blake, RT. 2, La Salle, Colo. 75 Acres SW 1/4 Sec. 12
- 58. J.S. McCarthy, RT. 2 La Salle, Colo. 80 Acres NW 1/4 Sec. 12
- 59. Conrod H. Hoff & Elizabeth Hoff, 1/4 Le Roy K. Hoff & Phyllis Hoff, Part NE 1/4 Sec. 12
- 60. Will H. Ewing & Mary F. Ewing, NE 1/4 Sec. 14
- 61. Joe B. Pumphrey & Laura Pumphrey, SE 1/4 NE 1/4 Sec. 14
- 62. Front A. Eckhardt, NE 1/4 SW 1/4 Sec. 14
- 63. Louis Dinner & Ida Dinner, 814 1/2th Ave, Greeley, Colo. NW 1/4 NW 1/4 Sec. 13
- 64. Except RR & Strip on N. Side to Co.
- 65. Pauline Dupper Kaiser, La Salle, Colo. 1/3 Acre Each Lot
- 66. June E. Larson, La Salle, Colo. 1/3 Acre
- 67. Gottlieb Dupper, La Salle, Colo. 1 Acre
- 68. Bryan M. Clark & Arther Clark, NW 1/4 Sec. 6
- 69. M.E. Hagen, Greeley, Colo. 12 Acres SW 1/4 Sec. 6
- 70. Antone & Margarete Kramer, La Salle, Colo. 3 Acres SW 1/4 Sec. 6

- 71. Harriette J. Blake, RT. 2, La Salle, Colo. 75 Acres SW 1/4 Sec. 12
- 72. J.S. McCarthy, RT. 2 La Salle, Colo. 80 Acres NW 1/4 Sec. 12
- 73. Conrod H. Hoff & Elizabeth Hoff, 1/4 Le Roy K. Hoff & Phyllis Hoff, Part NE 1/4 Sec. 12
- 74. Will H. Ewing & Mary F. Ewing, NE 1/4 Sec. 14
- 75. Joe B. Pumphrey & Laura Pumphrey, SE 1/4 NE 1/4 Sec. 14
- 76. Front A. Eckhardt, NE 1/4 SW 1/4 Sec. 14
- 77. Louis Dinner & Ida Dinner, 814 1/2th Ave, Greeley, Colo. NW 1/4 NW 1/4 Sec. 13
- 78. Except RR & Strip on N. Side to Co.
- 79. Pauline Dupper Kaiser, La Salle, Colo. 1/3 Acre Each Lot
- 80. June E. Larson, La Salle, Colo. 1/3 Acre
- 81. Gottlieb Dupper, La Salle, Colo. 1 Acre
- 82. Bryan M. Clark & Arther Clark, NW 1/4 Sec. 6
- 83. M.E. Hagen, Greeley, Colo. 12 Acres SW 1/4 Sec. 6
- 84. Antone & Margarete Kramer, La Salle, Colo. 3 Acres SW 1/4 Sec. 6

- 85. Harriette J. Blake, RT. 2, La Salle, Colo. 75 Acres SW 1/4 Sec. 12
- 86. J.S. McCarthy, RT. 2 La Salle, Colo. 80 Acres NW 1/4 Sec. 12
- 87. Conrod H. Hoff & Elizabeth Hoff, 1/4 Le Roy K. Hoff & Phyllis Hoff, Part NE 1/4 Sec. 12
- 88. Will H. Ewing & Mary F. Ewing, NE 1/4 Sec. 14
- 89. Joe B. Pumphrey & Laura Pumphrey, SE 1/4 NE 1/4 Sec. 14
- 90. Front A. Eckhardt, NE 1/4 SW 1/4 Sec. 14
- 91. Louis Dinner & Ida Dinner, 814 1/2th Ave, Greeley, Colo. NW 1/4 NW 1/4 Sec. 13
- 92. Except RR & Strip on N. Side to Co.
- 93. Pauline Dupper Kaiser, La Salle, Colo. 1/3 Acre Each Lot
- 94. June E. Larson, La Salle, Colo. 1/3 Acre
- 95. Gottlieb Dupper, La Salle, Colo. 1 Acre
- 96. Bryan M. Clark & Arther Clark, NW 1/4 Sec. 6
- 97. M.E. Hagen, Greeley, Colo. 12 Acres SW 1/4 Sec. 6
- 98. Antone & Margarete Kramer, La Salle, Colo. 3 Acres SW 1/4 Sec. 6

- 99. Harriette J. Blake, RT. 2, La Salle, Colo. 75 Acres SW 1/4 Sec. 12
- 100. J.S. McCarthy, RT. 2 La Salle, Colo. 80 Acres NW 1/4 Sec. 12
- 101. Conrod H. Hoff & Elizabeth Hoff, 1/4 Le Roy K. Hoff & Phyllis Hoff, Part NE 1/4 Sec. 12
- 102. Will H. Ewing & Mary F. Ewing, NE 1/4 Sec. 14
- 103. Joe B. Pumphrey & Laura Pumphrey, SE 1/4 NE 1/4 Sec. 14
- 104. Front A. Eckhardt, NE 1/4 SW 1/4 Sec. 14
- 105. Louis Dinner & Ida Dinner, 814 1/2th Ave, Greeley, Colo. NW 1/4 NW 1/4 Sec. 13
- 106. Except RR & Strip on N. Side to Co.
- 107. Pauline Dupper Kaiser, La Salle, Colo. 1/3 Acre Each Lot
- 108. June E. Larson, La Salle, Colo. 1/3 Acre
- 109. Gottlieb Dupper, La Salle, Colo. 1 Acre
- 110. Bryan M. Clark & Arther Clark, NW 1/4 Sec. 6
- 111. M.E. Hagen, Greeley, Colo. 12 Acres SW 1/4 Sec. 6
- 112. Antone & Margarete Kramer, La Salle, Colo. 3 Acres SW 1/4 Sec. 6