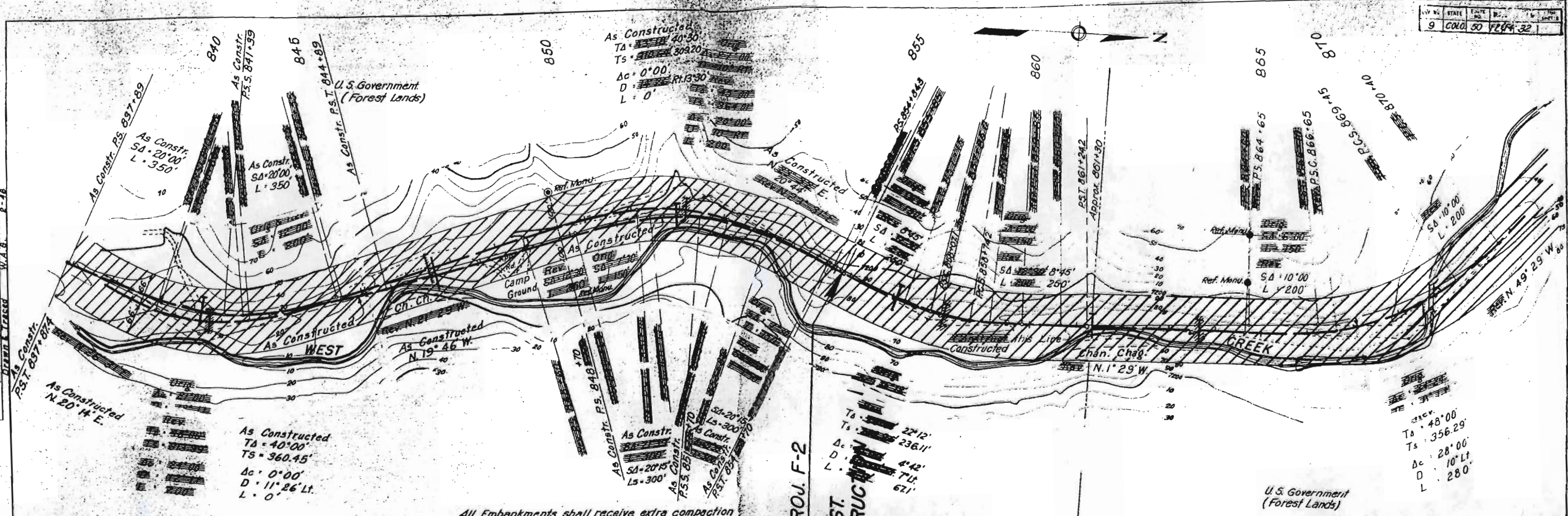
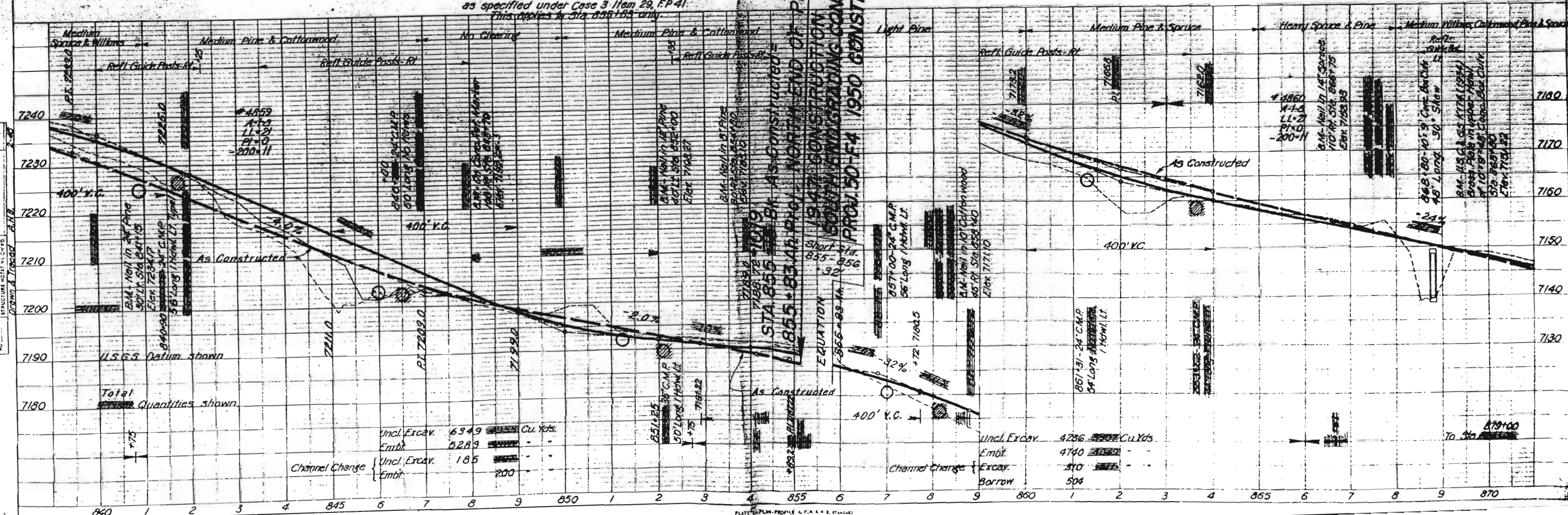


VERTICAL CURVE W.A.B.

NO. 141 NOTES
STRUCTURE NOT TO SCALE
DRAWN AT HEAD A.B.B.



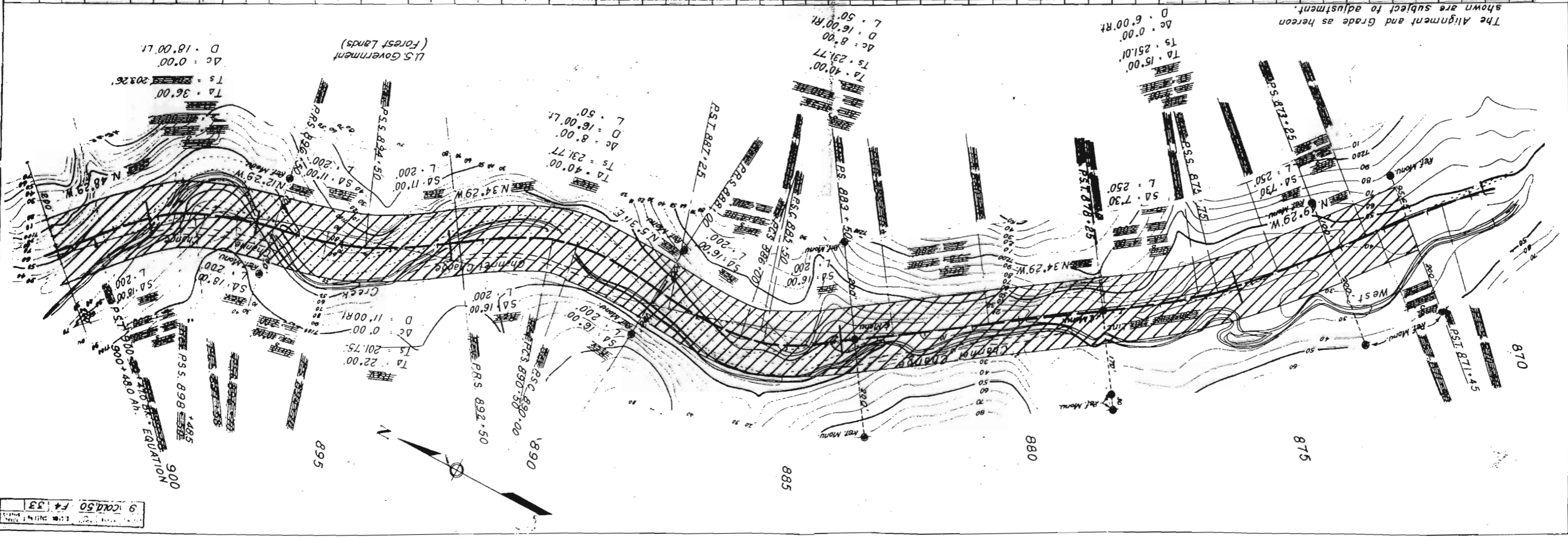
All Embankments shall receive extra compaction as specified under Case 3 Item 29, F.P. 41. This applies to Sta. 855+00 only.



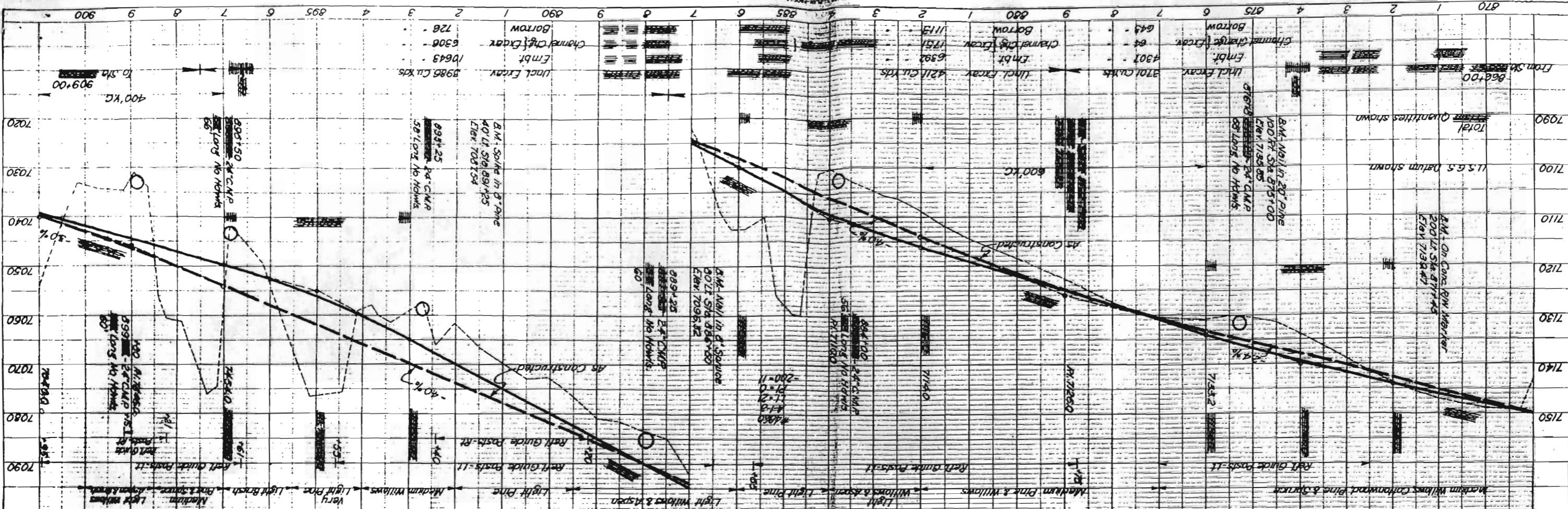
Uncl. Excav.	6349	Cu. Yds.
Embt.	5289	
Channel Change		
Uncl. Excav.	185	
Embt.	200	

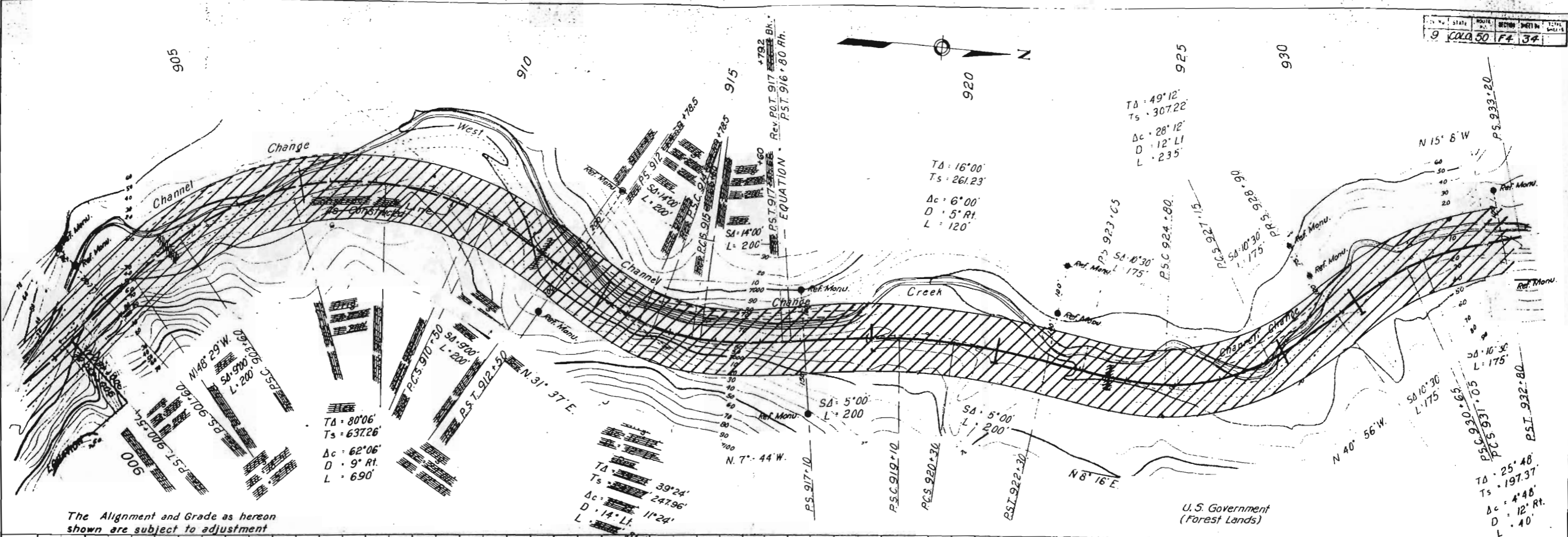
Uncl. Excav.	4286	Cu. Yds.
Embt.	4740	
Channel Change		
Excav.	310	
Borrow	504	

To Sta. 879+00



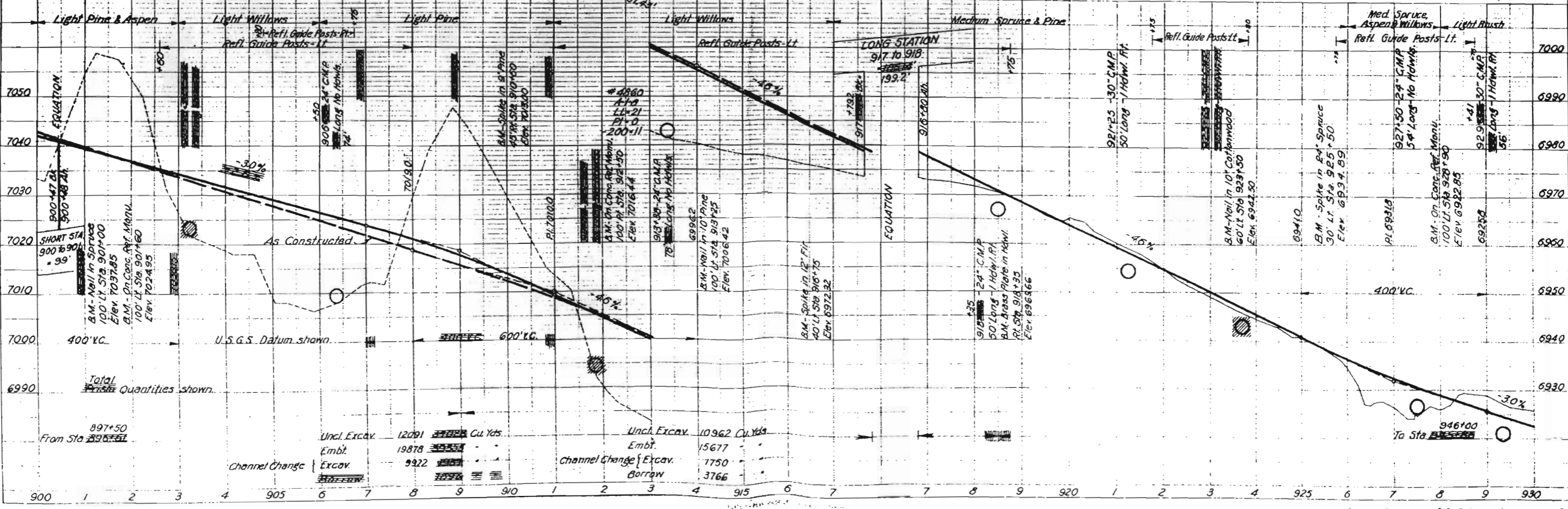
The Alignment and Grade as hereon shown are subject to adjustment.

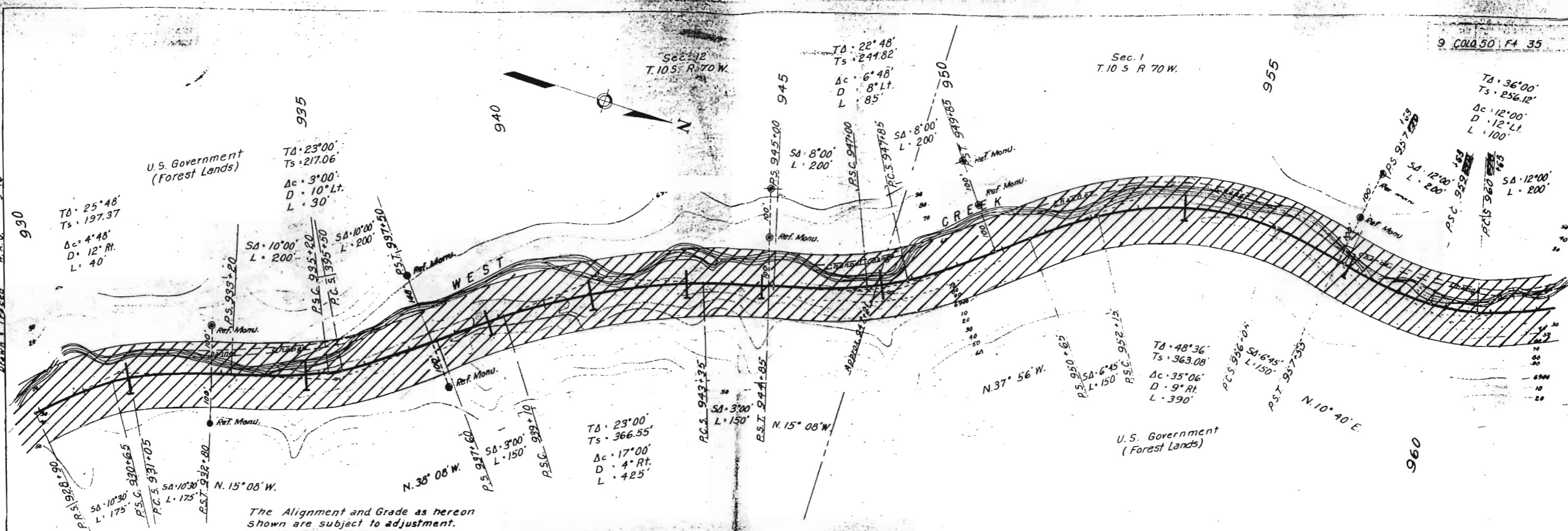




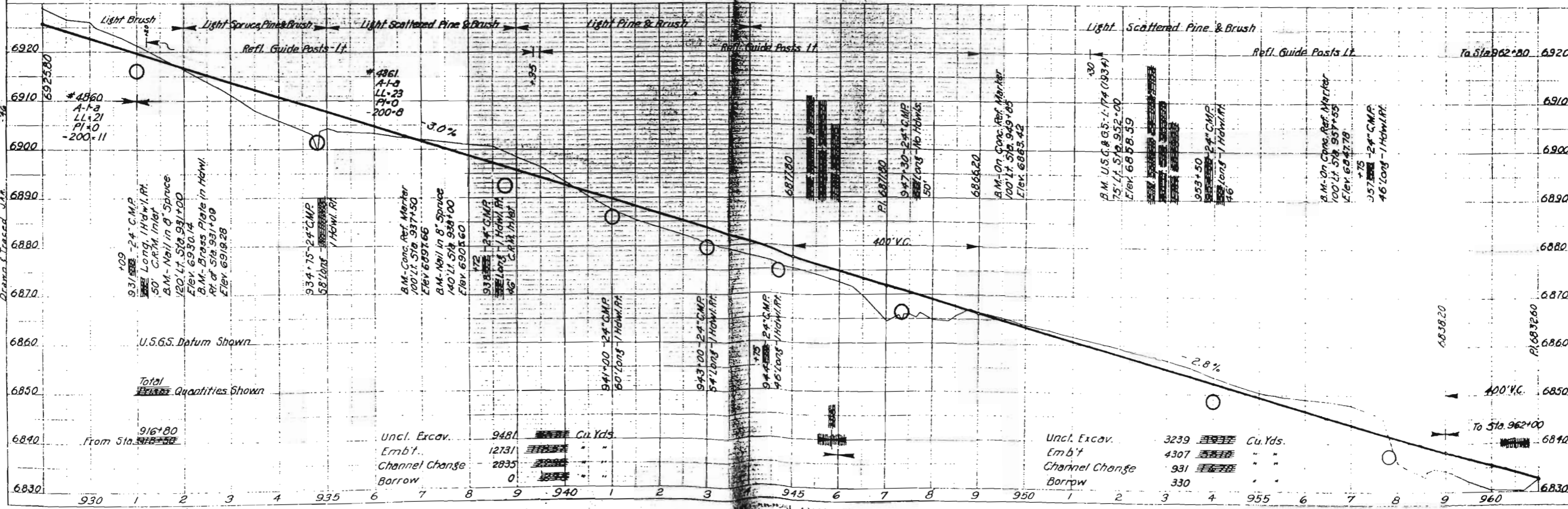
The Alignment and Grade as hereon shown are subject to adjustment

U.S. Government
(Forest Lands)





The Alignment and Grade as hereon shown are subject to adjustment.



Total Quantities Shown

From Sta. 916+80

Uncl. Excav.	9481	Cu. Yds.
Emb't.	12731	"
Channel Change	2835	"
Borrow	0	"

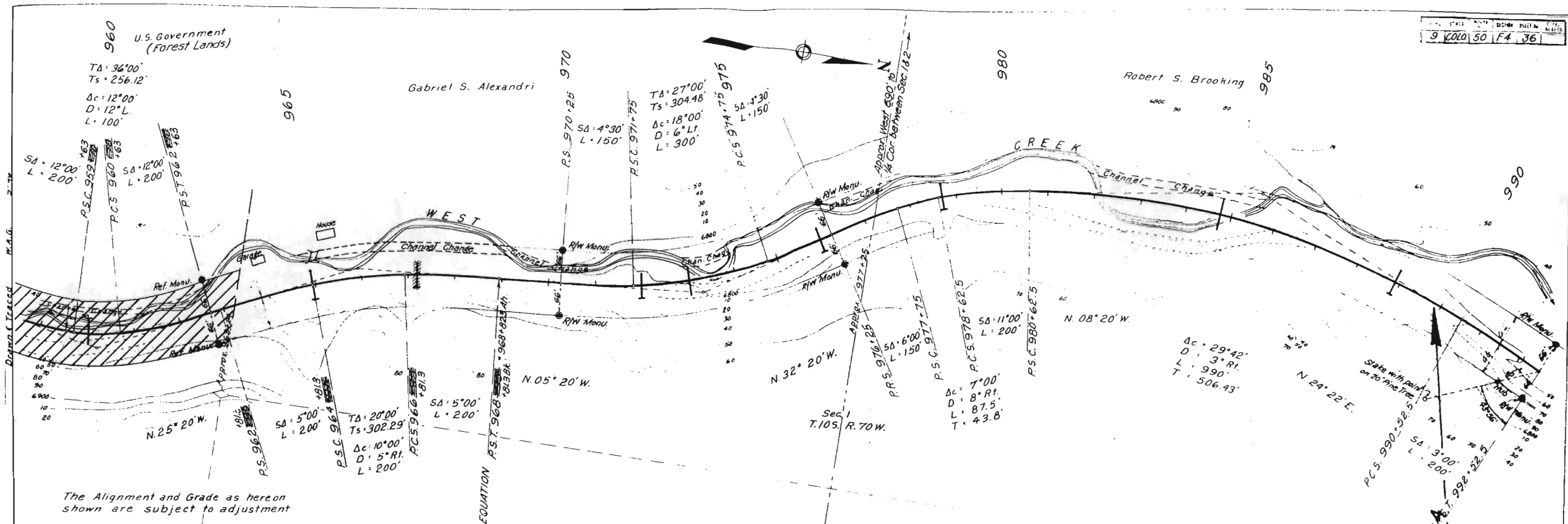
Uncl. Excav.	3239	Cu. Yds.
Emb't.	4307	"
Channel Change	931	"
Borrow	330	"

960 U.S. Government (Forest Lands)

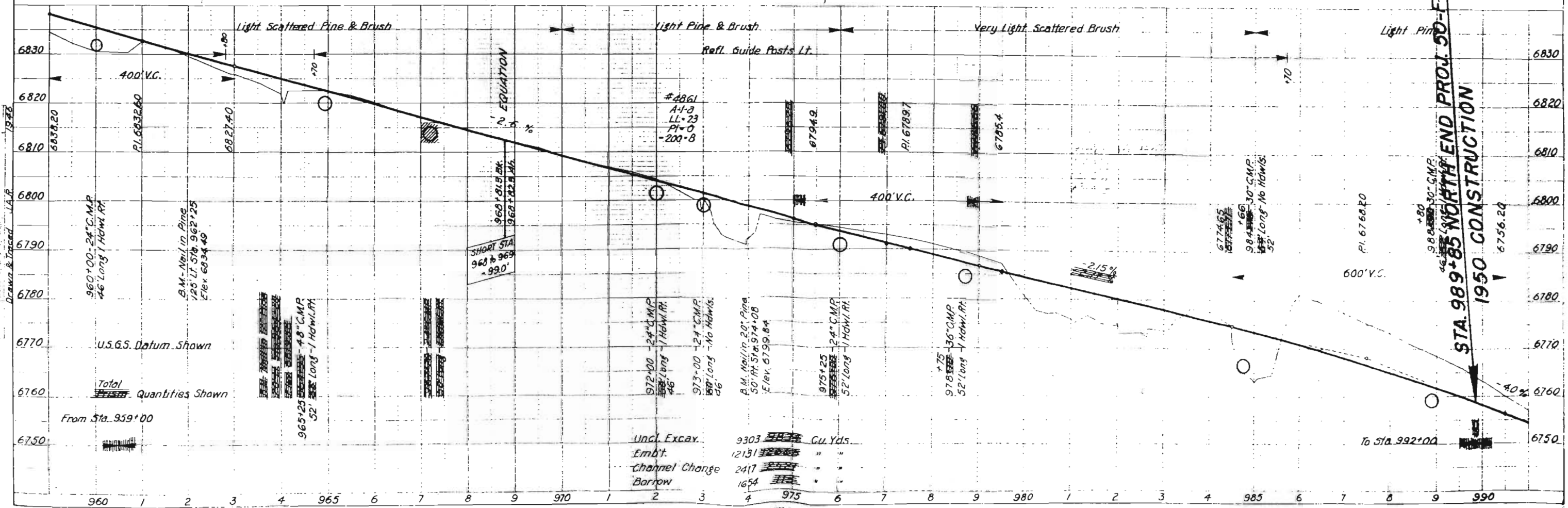
TA: 36°00'
Ts: 256.12'
Δc: 12°00'
D: 12°L
L: 100'

Gabriel S. Alexandri

Robert S. Brooking



The Alignment and Grade as hereon shown are subject to adjustment



STA. 989+85 NORTH END PROJ. 50-F-4
 1950 CONSTRUCTION

U.S.G.S. Datum Shown
Total Quantities Shown
From Sta. 959+00

Uncl. Excav.	9303	Cu. Yds.
Embt.	12131	" "
Channel Change	2417	" "
Borrow	1654	" "

