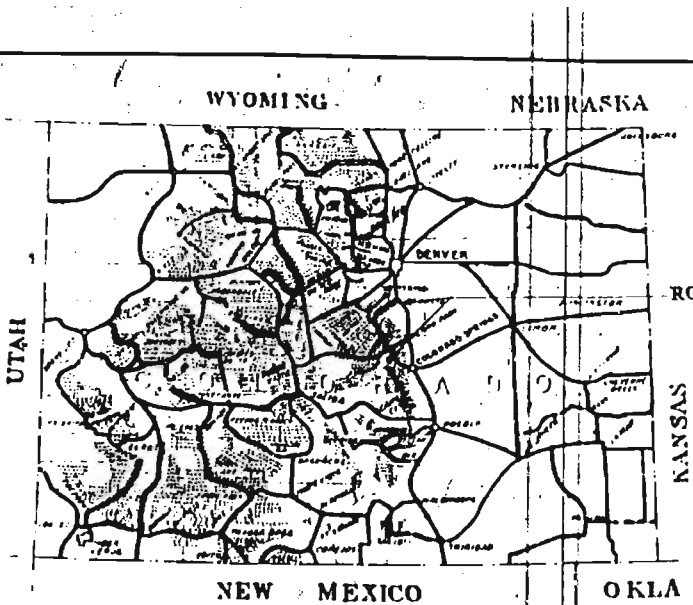


FEDERAL WORKS AGENCY PUBLIC ROADS ADMINISTRATION

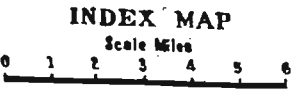
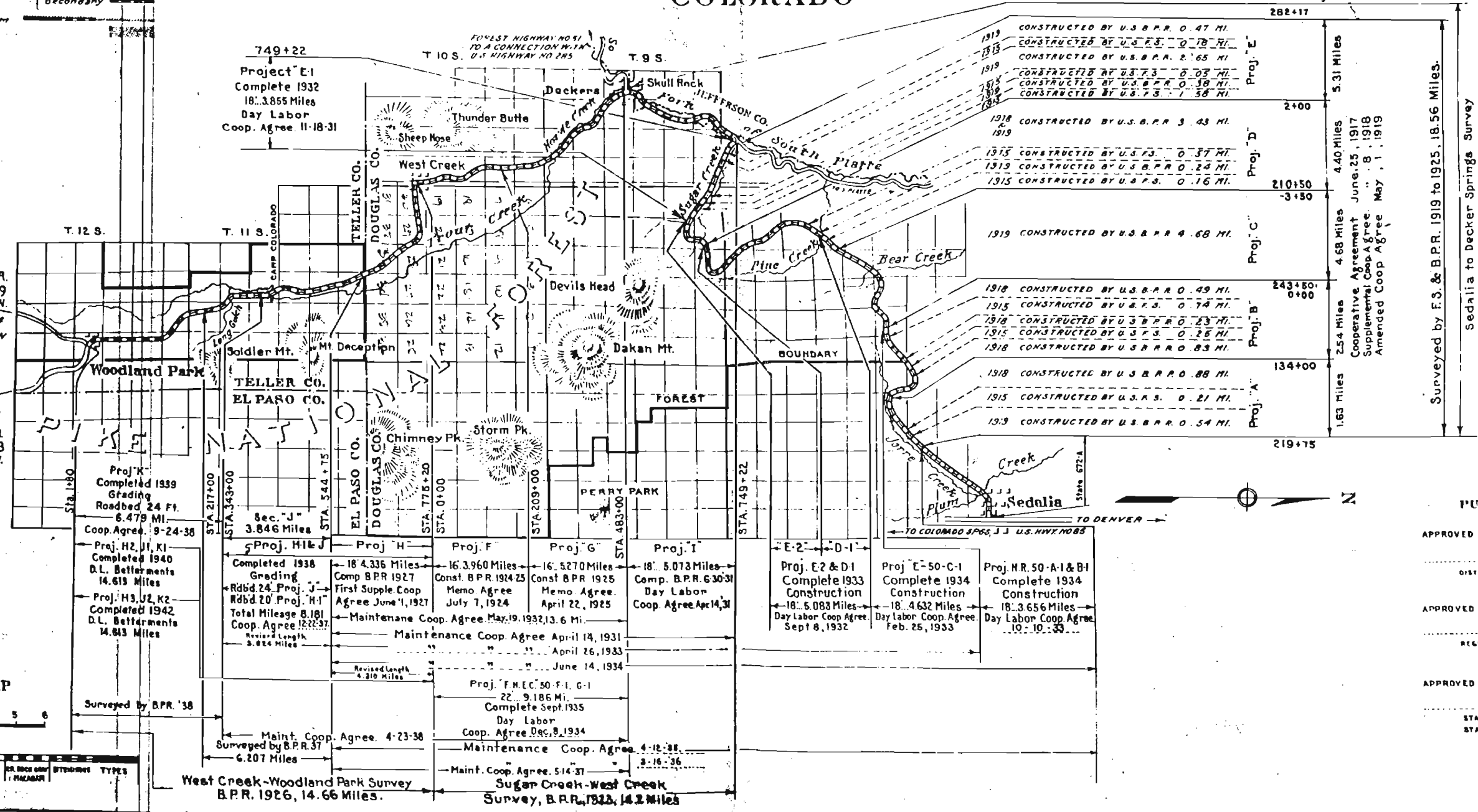
DIST.	STATE	ROUTE NO.	SECTION	SHEET NO.	TOTAL
3	COLO.			1	73

AS CONSTRUCTED PROJECT 50-H3, J2, K2 ROUTE 50 JARRE CANYON HIGHWAY SEDALIA TO WOODLAND PARK 52 MILES CLASS 2 COLORADO FOREST HIGHWAY SYSTEM PIKE NATIONAL FOREST DOUGLAS, JEFFERSON AND TELLER COUNTIES COLORADO

INDEX TO SHEETS		
SHEET NO.	DESCRIPTION	STATION+STATION
1	Title Sheet	
3	Summary Sheet	
Rev D3-Std-102	Std. Cattle Guard	
Rev D3-Std-117	Std. Masonry Headwalls	
Rev D3-Std-129	Std. Miscellaneous Structures	
D3-Std-144	Std. Emb'l. Protectors	
D3-Std-176	Cement-Rubble Masonry Drop Inlet	



Federal Aid Highway System
 Primary
 Secondary
 Forest Highway System
 National Forests



EXISTING ROAD	PROPOSED	GRADED	RECONSTRUCTED	BASE COURSE	OR. DRAINAGE	BYWAYS	OTHER TYPES
---	---	---	---	---	---	---	---

282+17
 2400
 210+50
 -3+50
 243+50
 0+00
 134+00
 219+75

5.31 Miles
 4.40 Miles
 4.68 Miles
 2.54 Miles
 1.63 Miles

CONSTRUCTED BY U.S. B.P.R. 0.47 MI.
 CONSTRUCTED BY U.S. F.S. 0.18 MI.
 CONSTRUCTED BY U.S. B.P.R. 2.65 MI.
 CONSTRUCTED BY U.S. F.S. 0.03 MI.
 CONSTRUCTED BY U.S. B.P.R. 0.18 MI.
 CONSTRUCTED BY U.S. F.S. 1.58 MI.
 1918 CONSTRUCTED BY U.S. B.P.R. 3.43 MI.
 1915 CONSTRUCTED BY U.S. F.S. 0.37 MI.
 1915 CONSTRUCTED BY U.S. B.P.R. 0.24 MI.
 1915 CONSTRUCTED BY U.S. F.S. 0.16 MI.
 1919 CONSTRUCTED BY U.S. B.P.R. 4.68 MI.
 1918 CONSTRUCTED BY U.S. B.P.R. 0.49 MI.
 1915 CONSTRUCTED BY U.S. F.S. 0.74 MI.
 1918 CONSTRUCTED BY U.S. B.P.R. 0.23 MI.
 1915 CONSTRUCTED BY U.S. F.S. 0.25 MI.
 1918 CONSTRUCTED BY U.S. B.P.R. 0.83 MI.
 1918 CONSTRUCTED BY U.S. B.P.R. 0.88 MI.
 1915 CONSTRUCTED BY U.S. F.S. 0.21 MI.
 1913 CONSTRUCTED BY U.S. B.P.R. 0.54 MI.

Project E-1
 Complete 1932
 18.3855 Miles
 Day Labor
 Coop. Agree 11-18-31

Project E-2
 Complete 1934
 18.4632 Miles
 Day Labor
 Coop. Agree Feb. 25, 1933

Project E-50-C-1
 Complete 1934
 18.3656 Miles
 Day Labor
 Coop. Agree 10-10-33

Project H-2, J1, K1
 Completed 1940
 D.L. Betterments
 14.613 Miles

Project H-3, J2, K2
 Completed 1942
 D.L. Betterments
 14.813 Miles

Project H-1
 Completed 1938
 Grading
 Rdbd. 24' Proj. J
 Rdbd. 20' Proj. H-1
 Total Mileage 8.181
 Coop. Agree 12-22-37
 Revised Length
 3.824 Miles

Project H-1 & J
 Completed 1938
 Const. B.P.R. 1924-25
 First Supple. Coop. Agree June 1, 1927
 Maintenance Coop. Agree May 19, 1932; 13.6 MI.
 Maintenance Coop. Agree April 14, 1931
 " " " " April 26, 1933
 " " " " June 14, 1934

Project F
 16.3960 Miles
 Const. B.P.R. 1924-25
 Memo Agree July 7, 1924

Project G
 16.5270 Miles
 Const. B.P.R. 1925
 Memo Agree April 22, 1925

Project I
 18.5073 Miles
 Comp. B.P.R. 6-30-31
 Day Labor
 Coop. Agree April 14, 31

Project J
 18.5083 Miles
 Day Labor
 Coop. Agree Sept 8, 1932

Project K
 Completed 1939
 Grading
 Roadbed 24 Ft.
 6.479 MI.
 Coop. Agree 9-24-38

Sec. J
 3.846 Miles
 STA. 217+00
 STA. 349+00
 STA. 544+75

El Paso Co.
 Douglas Co.
 Teller Co.

West Creek-Woodland Park Survey
 B.P.R. 1926, 14.66 Miles.

Sugar Creek-West Creek
 Survey, B.P.R. 1923, 14.2 Miles

Maint. Coop. Agree. 4-23-38
 Surveyed by B.P.R. 37
 6.207 Miles

Maint. Coop. Agree. 5-14-37
 3-16-36

Surveyed by F.S. & B.P.R. 1919 to 1925, 18.56 Miles.
 Sedalia to Decker Springs Survey

Cooperative Agreement June 25, 1917
 Supplemental Coop. Agree. " 8, 1918
 Amended Coop. Agree May 1, 1919

TO MANITOU
 U.S. 24 TO COLORADO SPRINGS
 R. 68 W.

TO BUENA VISTA
 & GRAND JUNCTION
 U.S. 24
 R. 69 W.

TO COLOMBO SPRS. J. J. U.S. HWY. NO. 68

TO DENVER

FEDERAL WORKS AGENCY
 PUBLIC ROADS ADMINISTRATION
 DISTRICT 3 DENVER COLORADO

APPROVED _____ DATE _____ 19__

DISTRICT ENGINEER

APPROVED _____ DATE _____ 19__

REGIONAL FORESTER

APPROVED _____ DATE _____ 19__

STATE HIGHWAY ENGINEER
 STATE OF COLORADO

Sta. 0+00 to Sta. 120
Sheet No. 4

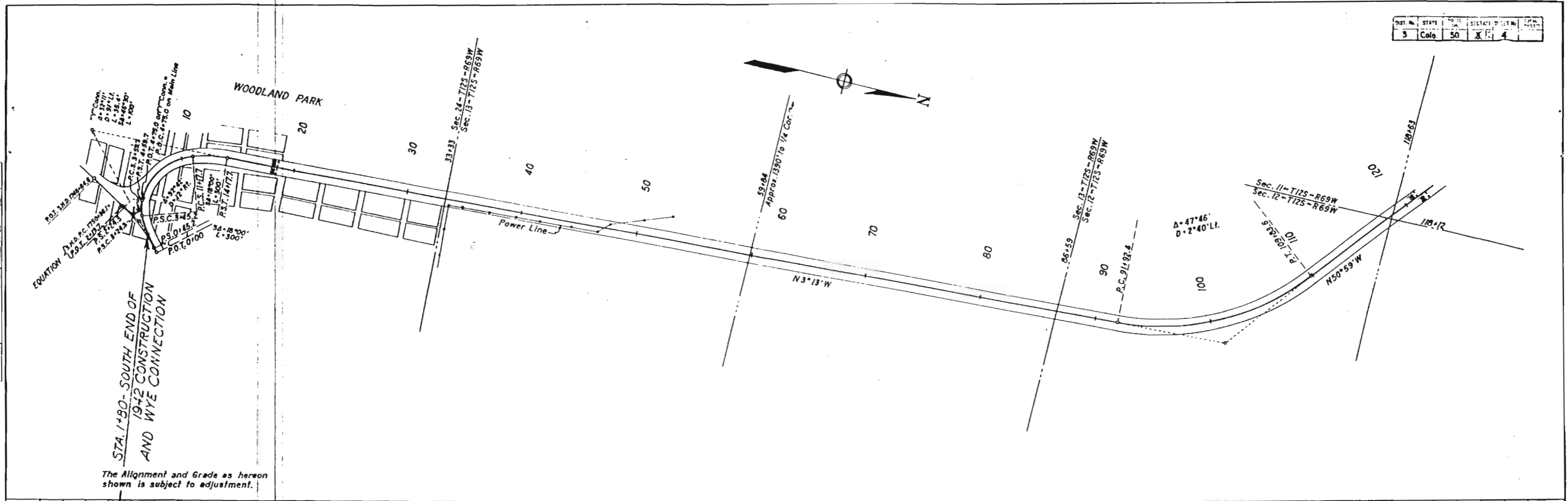
W.A.W.K. 1-40

NOTE: SEE DRAWING NO. 1-40 FOR DETAILS OF ALL CONNECTIONS.

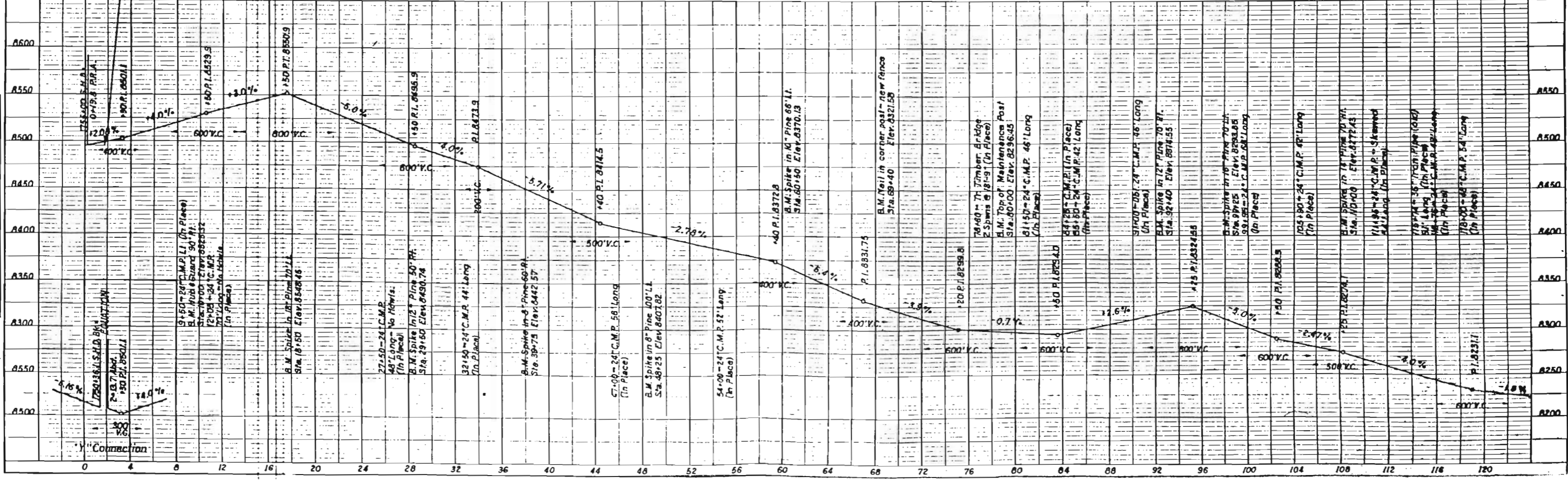
Traced W.A.W.K. 3-40

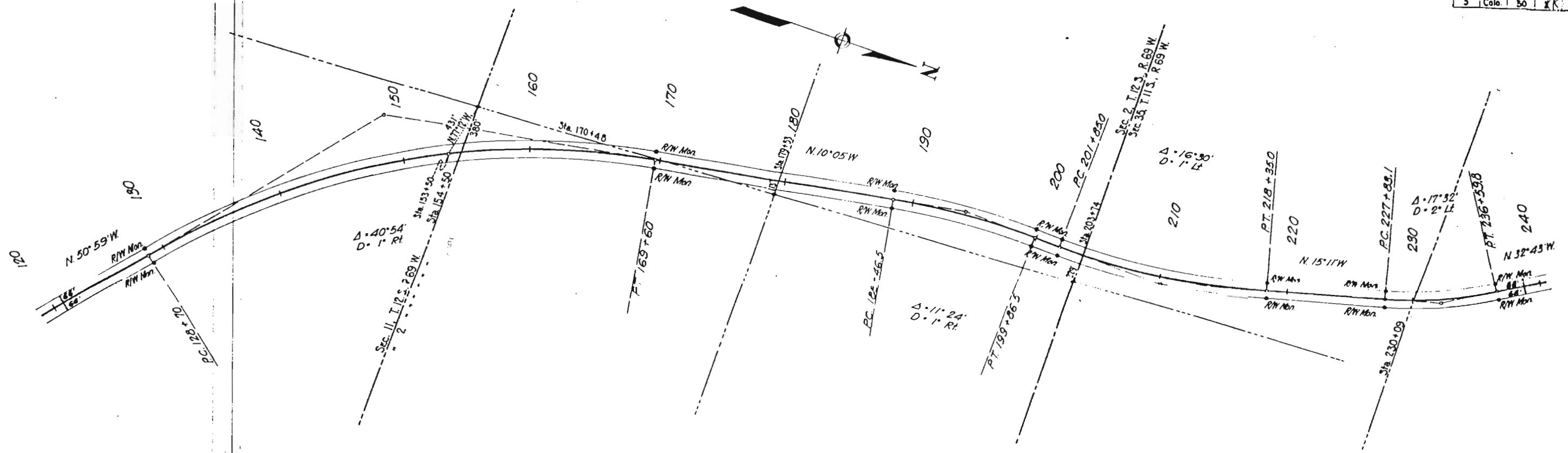
W.A.W.K. L-60

NOTE: BOOK (GARDEN) SHEET NO. 1-40 FOR DETAILS OF ALL CONNECTIONS.

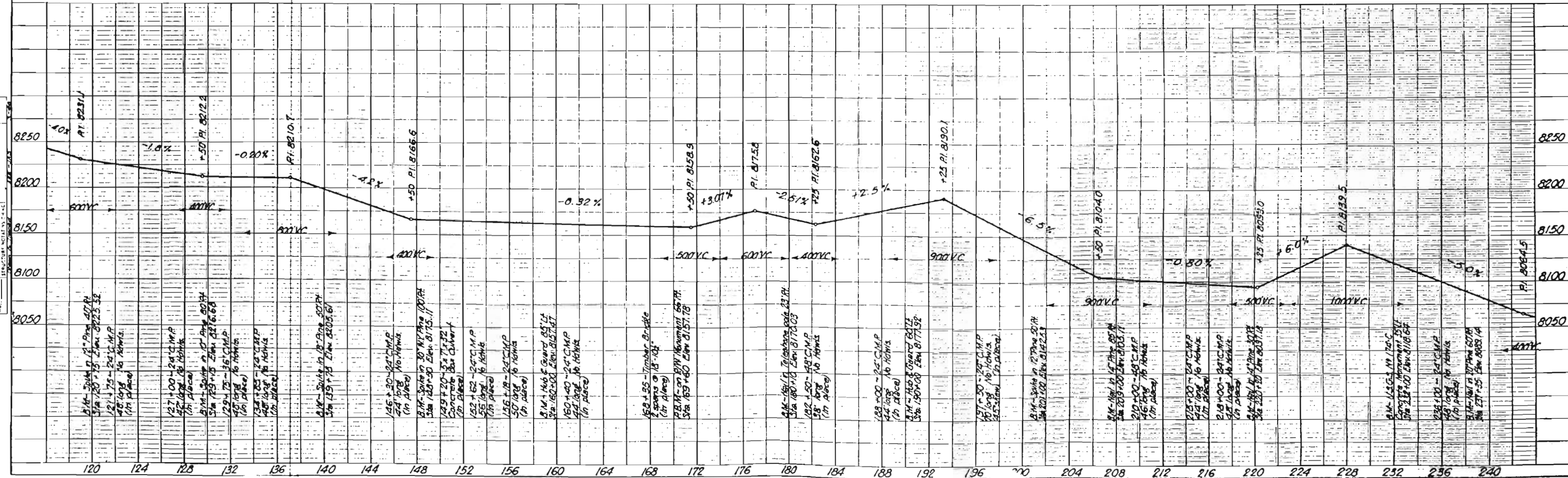


The Alignment and Grade as hereon shown is subject to adjustment.





The Alignment and Grade as hereon shown are subject to adjustment.

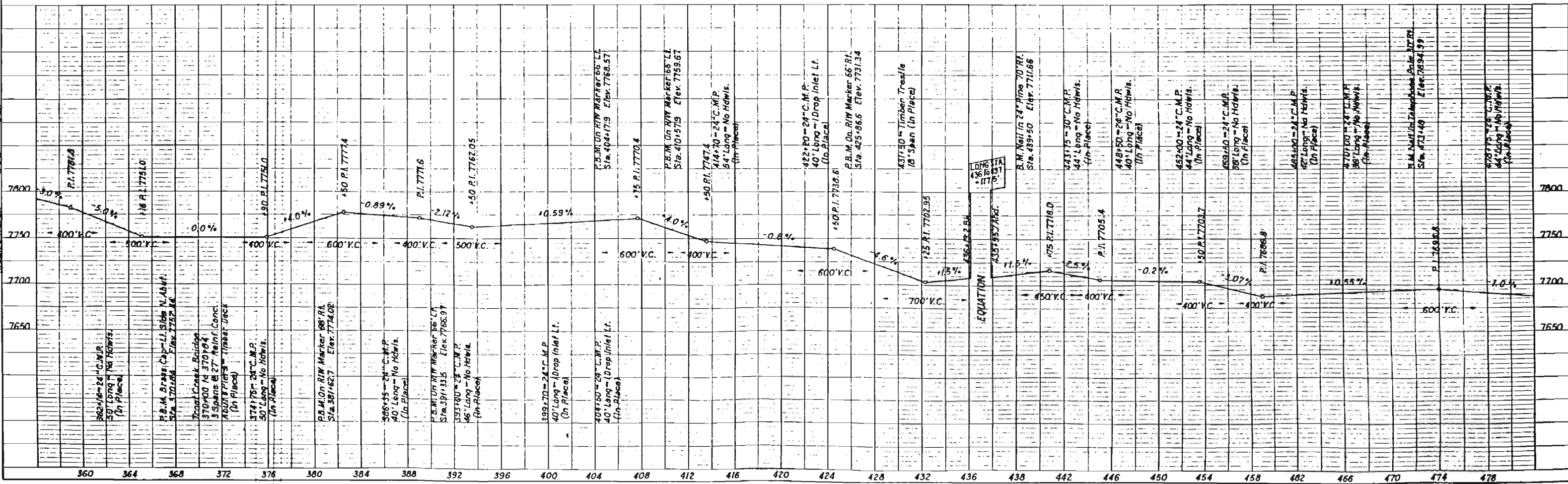
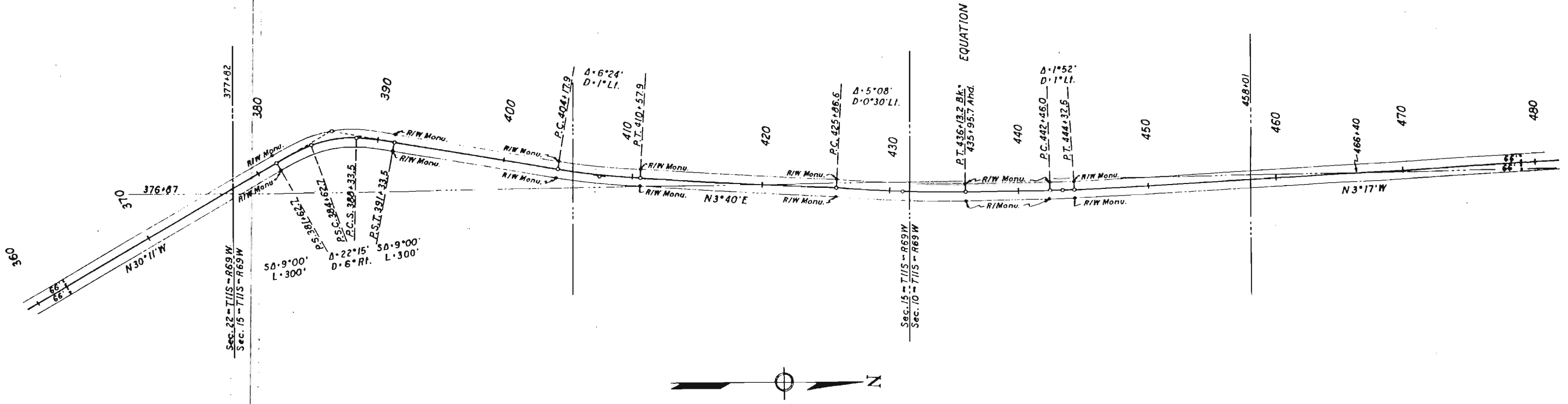


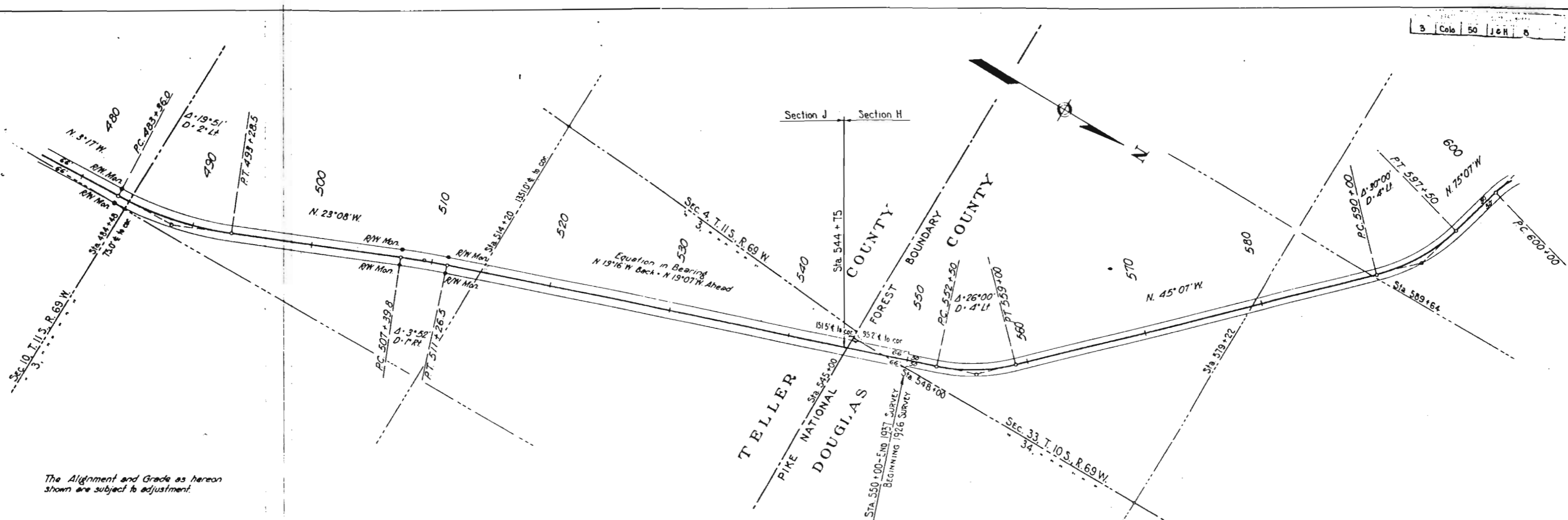
S.F.S. 504 to 400
Sheet No. 7

1" = 40'
N.A.W.

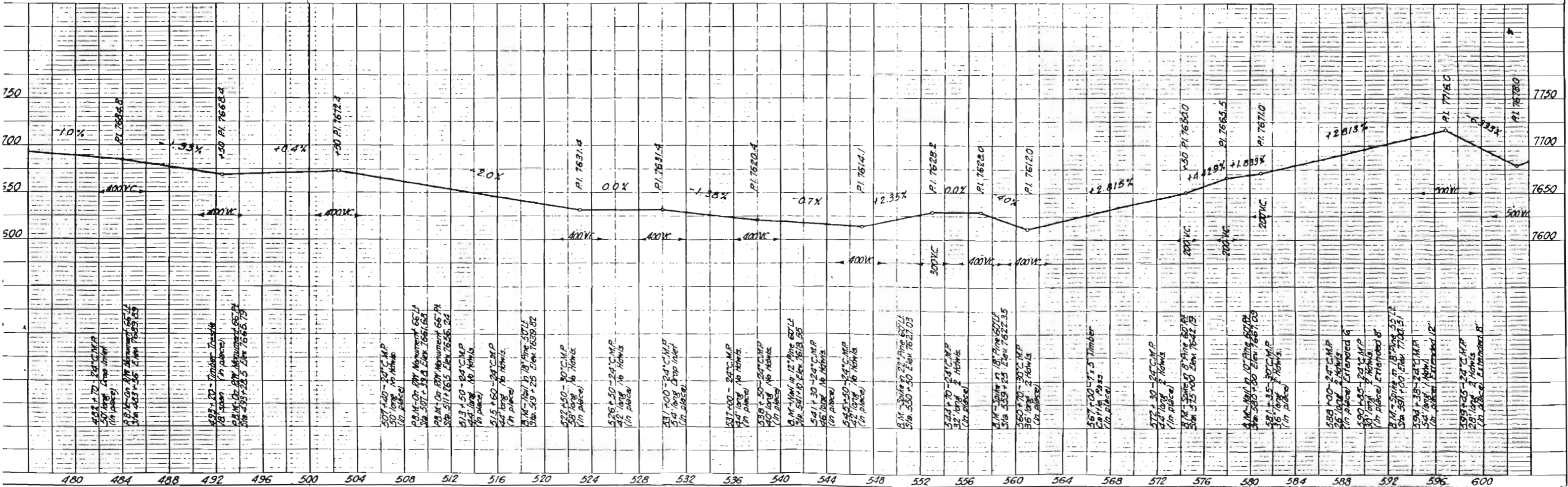
A.H.B. 1-40

DATE: 10-1-1910
BY: J. H. ...

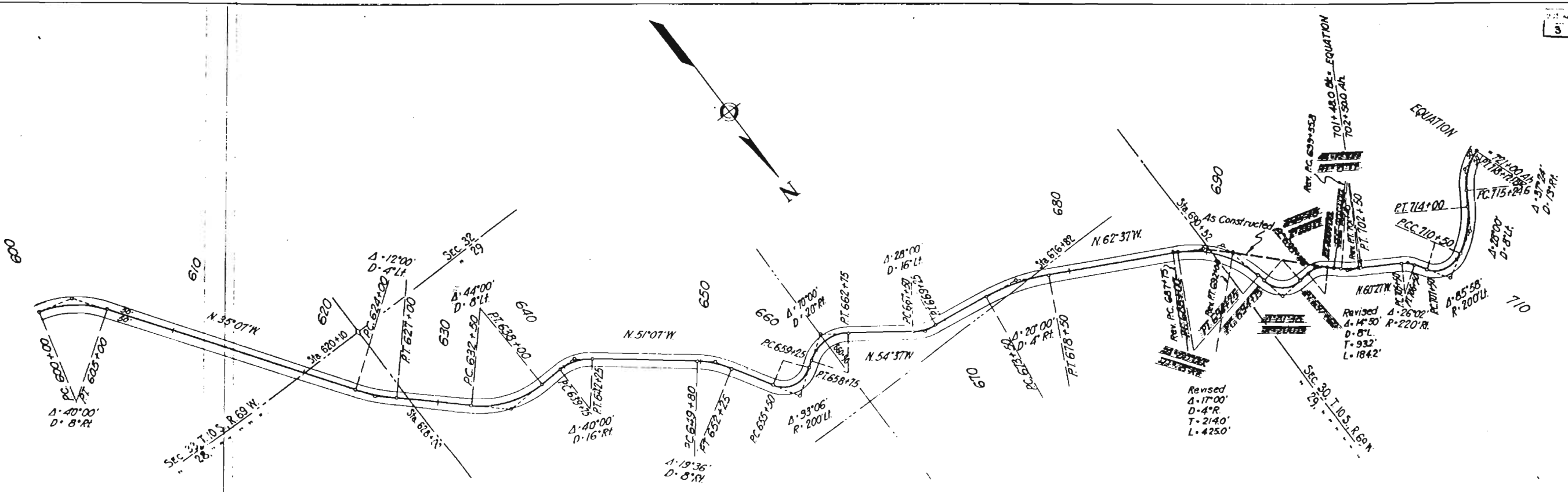




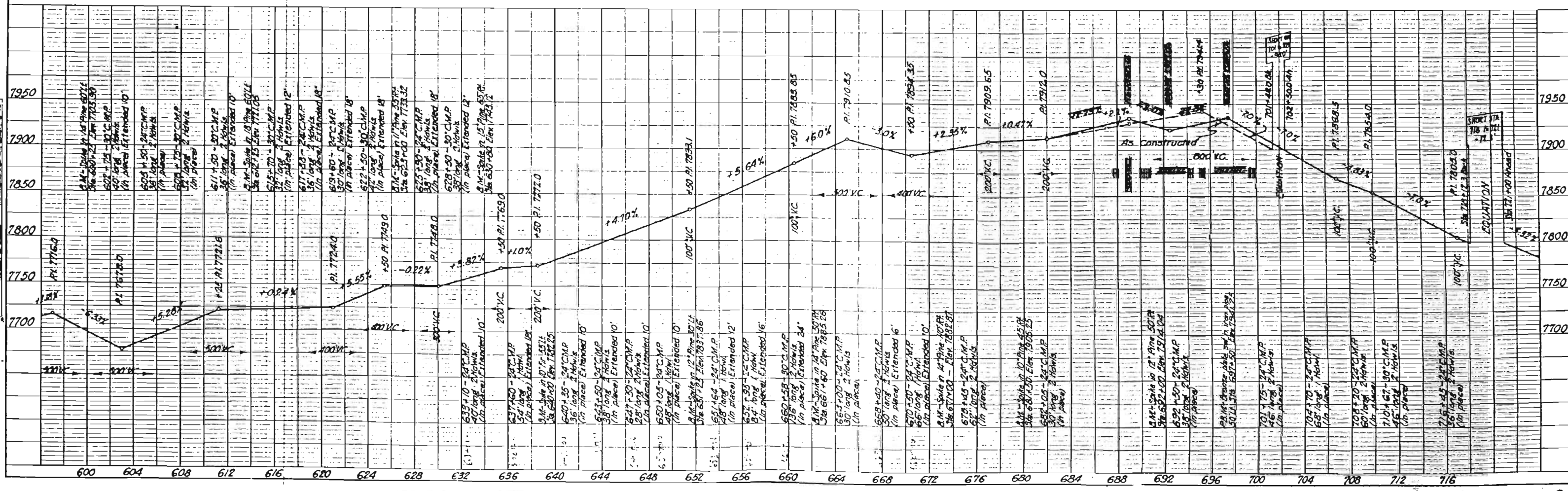
The Alignment and Grade as hereon shown are subject to adjustment.



SHEET NO. 3
 A.H.S. - J.A.S. - 3-40
 DRAWN BY



The Alignment and Grade as hereon shown are subject to adjustment.

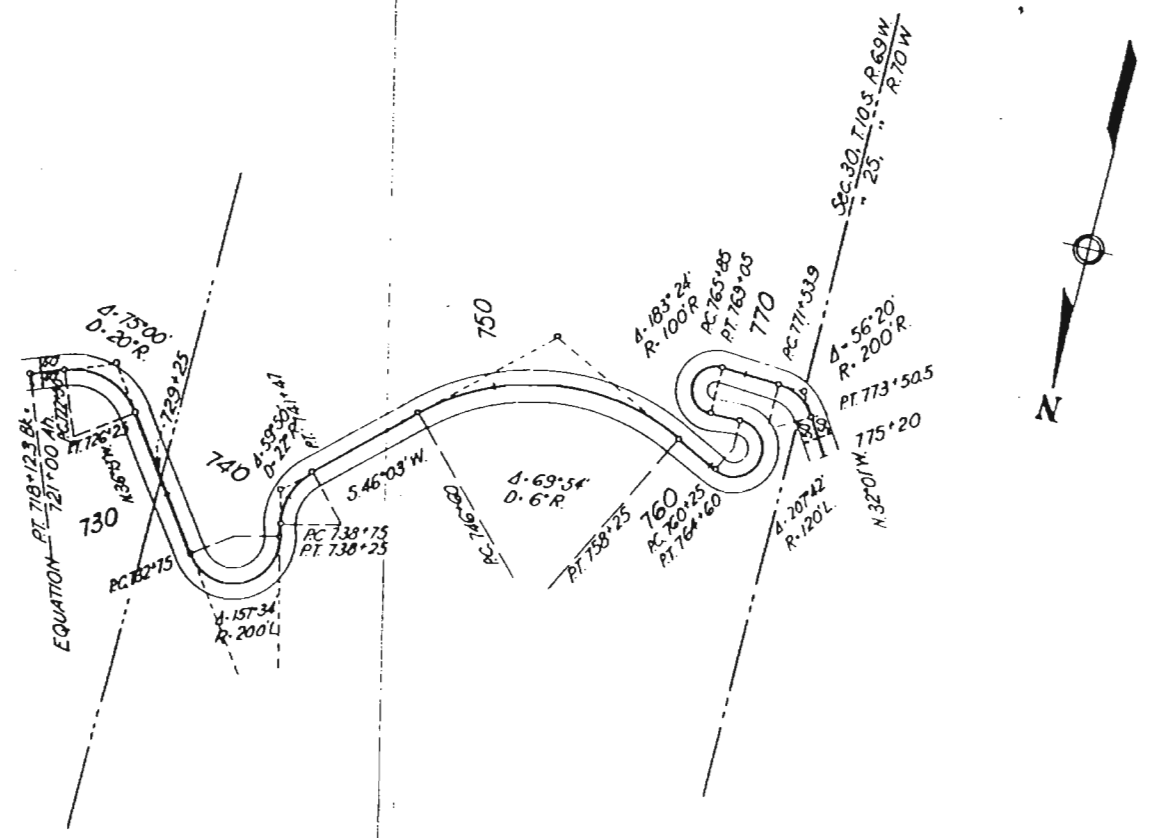


NOTE BOOK (PAGE) CHECKED
 & M. L. NORTON
 APPROVED
 DATE 6-11-39

Sheet No. 10

3-40

Drawn & Traced A.M.B.



The Alignment and Grade as hereon shown are subject to adjustment.

