

STATE DEPARTMENT OF HIGHWAYS
DIVISION OF HIGHWAYS—STATE OF COLORADO

RIGHT OF WAY PLAN OF PROPOSED
FEDERAL AID PROJECT NO. BRS 0006(17)
STATE HIGHWAY NO. 6
MESA COUNTY
RIGHT OF WAY
Scale of Original Drawing
1" = 40.0'
RDW Length of project = 225.0'

T.1N., R.2W., Ute Meridian

FEDERAL ROAD REGION NO.	DIVISION	PROJ. NO.	SHEET NO.	TOTAL SHEETS
III	COLORADO	BRS-0006(17)	1	1

REVISIONS	

Begin Const. Proj. BRS 0006(17), Sta. 13+00 =

Sta. 794+70 on Proj. FAP 242-E (1931); Mile Post 19.90

Begin R.O.W. Proj. BRS 0006(17), Sta. 14+25

End R.O.W. Proj. BRS 0006(17), Sta. 16+50

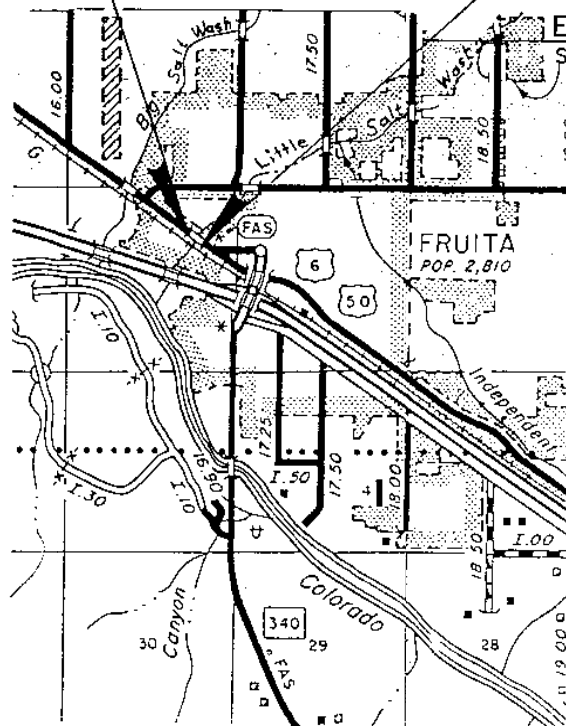
End Const. Proj. BRS 0006(17), Sta. 17+05 =

Sta. 790+65 on Proj. FAP 242-E (1931); Mile Post 19.98

Begin R.O.W. Proj. BRS 0006(17), Sta. 14+25

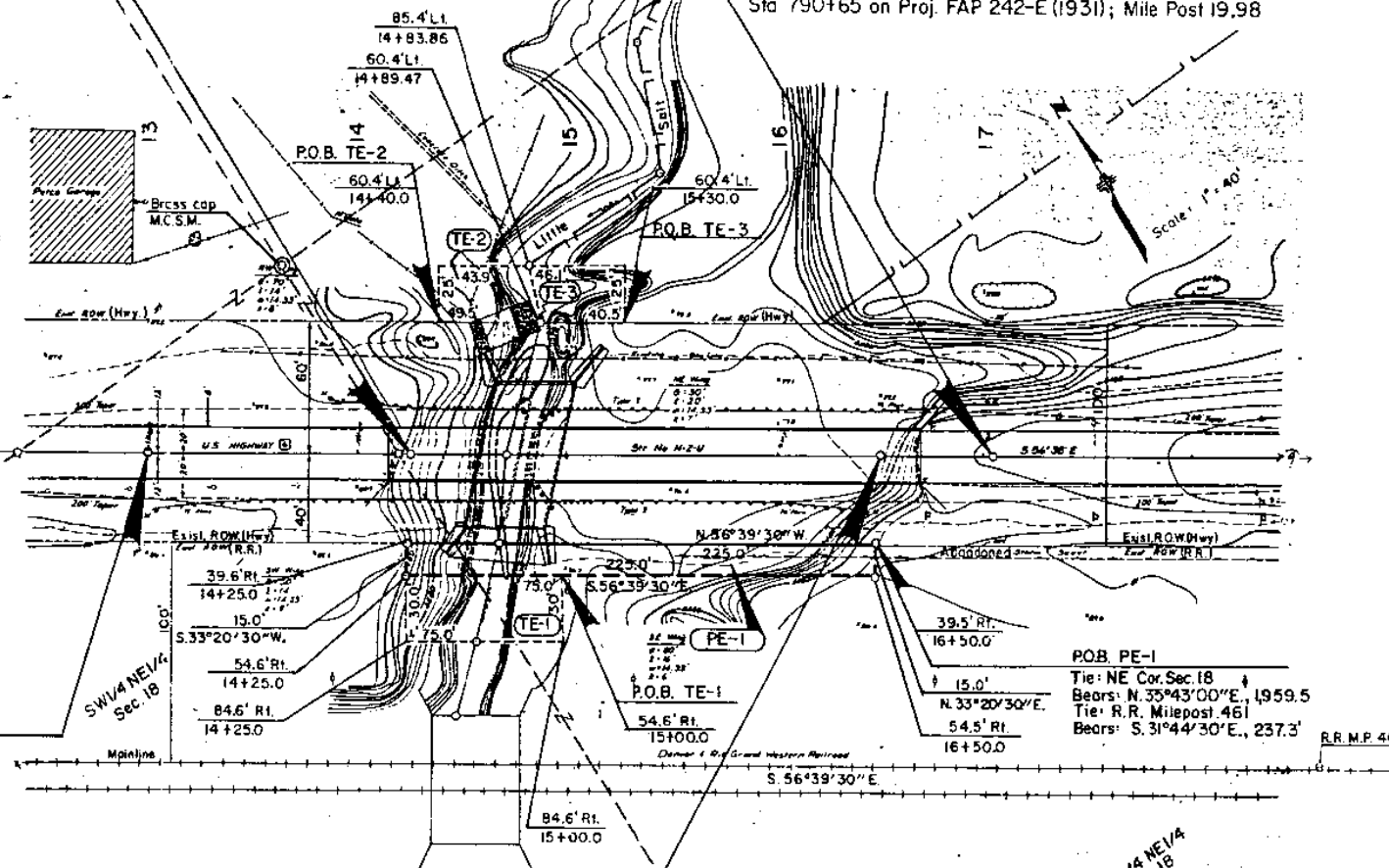
End Const. Proj. BRS 0006(17), Sta. 17+05 =

Sta. 790+65 on Proj. FAP 242-E (1931); Mile Post 19.98



Begin Const. Proj. BRS 0006(17), Sta. 13+00 =

Sta. 794+70 on Proj. FAP 242-E (1931); Mile Post 19.91



THE DENVER & RIO GRANDE WESTERN RAILROAD COMPANY
a Delaware Corporation
Part of the SE 1/4 NE 1/4 and the W 1/2 NE 1/4, Sec. 18

NOTE: Basis of bearing was established between the E 1/4 Cor., a Mesa County Survey Monument brass cap, and the N 1/16 Cor., a M.C.S.M. brass cap, of Sec. 18, T.1N., R.2W., Ute Meridian. The Bearing is N.0°18'33.9"W.

PARCEL NO.	OWNER	LOCATION	AREA IN ACRES			REMARKS
			PARCEL	TO BE ACQUIRED	REMAINDER	
PE-1	Denver & Rio Grande Western R.R. a Delaware corporation	SE 1/4 NE 1/4, W 1/2 NE 1/4, Sec. 18	0.078	0.078		Install & maintain box culvert Channel excavation
TE-1	Denver & Rio Grande Western R.R. a Delaware corporation	SE 1/4 NE 1/4, SW 1/4 NE 1/4, Sec. 18	0.052	0.052		Channel excavation
TE-2	Donald P. Amick & Ruby G. Amick, Jr.	NW 1/4 SE 1/4 NE 1/4, Sec. 18	0.027	0.027		Channel excavation and rip-rapping
TE-3	David H. Dolan	NW 1/4 SE 1/4 NE 1/4, Sec. 18	0.025	0.025		Channel excavation

Dist. 3
6-18-86
Subaccount: 86123

APPROVED: _____
ASSISTING ENGINEER

DATE: 9-27-86

DEPARTMENT OF TRANSPORTATION
FEDERAL HIGHWAY ADMINISTRATION

For: Div. ROW Office
Name: _____