

COLORADO DEPARTMENT OF TRANSPORTATION

Region 6
2000 S. Holly St.
Denver, CO 80222
Phone: (303) 757-9923 FAX: (303) 757-9053
RIGHT OF WAY PLANS UNIT: Scott Kimminau

Sheet Revisions		
mm/yy	XXXXX	XXX

To add revision blocks, insert block REVS at the top right corner of the existing revision block. Follow some procedure to insert another revision block. Erase this message when read.

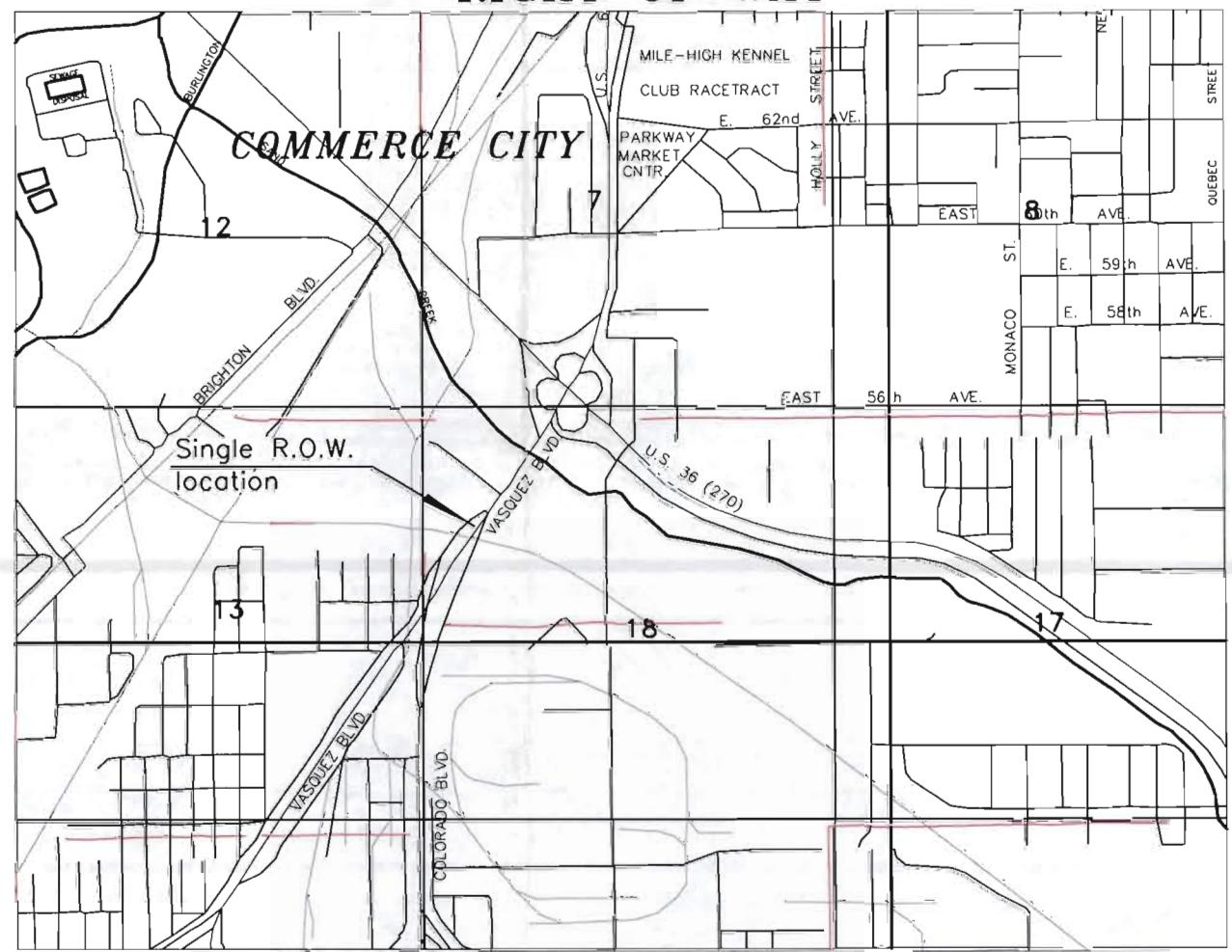
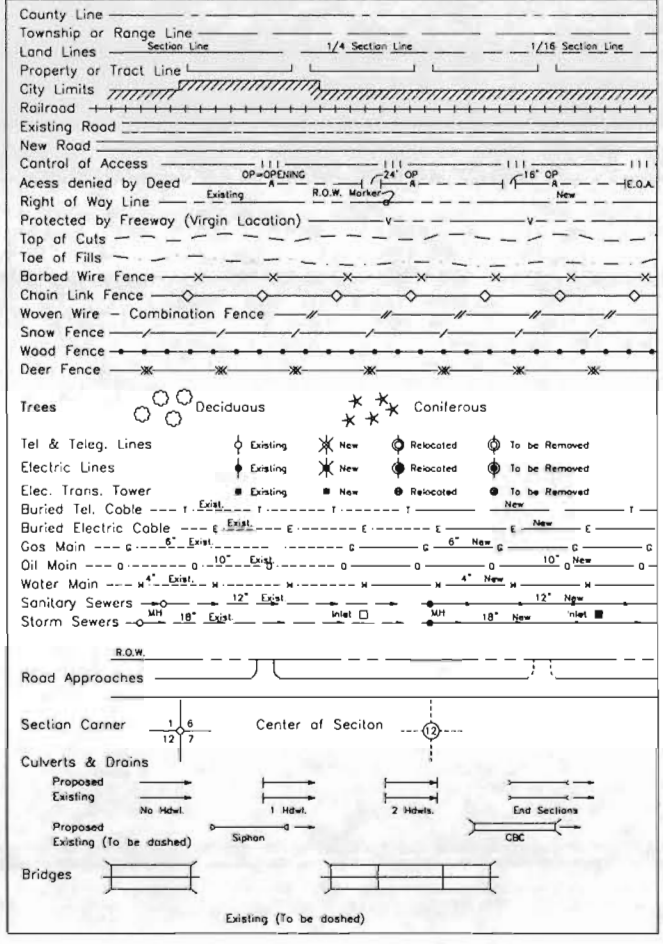
RIGHT OF WAY	
TITLE SHEET	
BR 0021-024	
S.H. 2 AT VASQUEZ	
PROJECT CODE: 12322	SHEET NUMBER: 1

INDEX OF SHEETS	
1	Title Sheet
3, 3A, 3B	Control Diagram
5	Plan Sheet

**DEPARTMENT OF TRANSPORTATION
STATE OF COLORADO**

**RIGHT OF WAY PLAN OF PROPOSED
FEDERAL AID PROJECT NO. BR 0021-024
STATE HIGHWAY NO. 2
ADAMS COUNTY
RIGHT OF WAY**

CONVENTIONAL SIGNS



NOT TO SCALE

BASIS OF BEARINGS

The location is the C.L. Median of I-270 near the N 1/4 cor. sec. 18, T3S, R67W.
Bearing from CP 2 (#1.056048A) 3.25" Alum. cap in median of I-270 to CP 3 (#1.059043) 3.25" Alum. cap in median of I-270 was determined by Solar observation to be N. 44°00'01" W.

**DEPARTMENT OF TRANSPORTATION
FEDERAL HIGHWAY ADMINISTRATION**

AUTHORIZED: _____ DATE _____

DIVISION ADMINISTRATOR

FILING CERTIFICATION: _____ DAY OF _____ AT _____ M., FOR INFORMATION
 DEPOSITED THIS _____ OF THE COUNTY LAND SURVEYS/RIGHT OF WAY
 SURVEYS AT PAGE _____ RECEPTION NUMBER _____
 SIGNED _____ DEPT. _____

a14_4111e.dwg 15 NOV 2000 12:06:28.4 PLOT/EDIT by ps

DATE: 08/21/00
Project Code: 12322
Region Six Autocad

COORDINATES BASED ON
"U.S. SURVEY FEET"

COLORADO DEPARTMENT OF TRANSPORTATION

CONTROL AND MONUMENTATION SHEET

IN SECTIONS 7,18,19,30, T. 3 S., R. 67 W., and SECTIONS
12,13,24,25, T. 3 S., R. 68 W., OF THE 6th P.M.

ADAMS & DENVER COUNTIES

FED. ROAD REGION	DIVISION	PROJECT NUMBER	SHEET NUMBER
VIII	COLO.		
REVISIONS			

SURVEY CONTROL POINT TABULATION

BRF 265-1(2) SH 265 OVER SAND CREEK & DEN. RWY

PNT	NORTHING (feet)	EASTING (feet)	MONU. NO. (stamped on cap)	DESCRIPTION OF MONUMENTS
1	716782.230	159326.385	1.056048	find 3.25" Alum cap in PVC pipe GPS "Vasquez"
2	716281.640	159943.108	1.056048A	set 3.25" Alum cap I270 median, Type 1 mon.
3	718386.904	157910.058	1.059043	set 3.25" Alum cap I270 median, Type 1 mon.
31	716343.226	157287.157	1.056040	set 2" Brass cap on "Feno" Type rod
32	716336.174	159935.507	1.056036	set 2" Brass cap on "Feno" Type rod
33	715782.119	153524.220	1.055028	set 3.25" Alum cap, Type 2 mon.
34	716486.143	153425.500	1.056028	set 3.25" Alum cap, Type 2 mon.
35	716367.713	154271.424	1.056031	set 3.25" Alum cap, Type 2 mon.
36	717213.077	155029.138	1.057033	set 3.25" Alum cap on alum rod in asphalt drive
37	717936.808	155926.394	1.058036	set 3.25" Alum cap, Type 2 mon.
38	718828.103	156592.292	1.059037	set 3.25" Alum cap, Type 2 mon. in landscaping
105	716307.305	154608.866	1/4 COR S12 & 13	find 3.25" Alum cap on 30" pipe monument in monument box
771	716438.411	158826.431	04	find 3.25" Alum cap, Type 1 mon.

SUBACCOUNT 82982

SURVEY CONTROL POINT TABULATION

CXBRF 12-0002-35 0.8 mi N. OF I70 (STR E-17-P)

PNT	NORTHING (feet)	EASTING (feet)	MONU. NO. (stamped on cap)	DESCRIPTION OF MONUMENTS
353	712266.278	157164.612	BM 579	find 2" Brass cap in curb radius "DENVER CITY ENGINEER, 1991 BENCH MARK"
355	713407.635	157217.385	1.051040A	set 3.25" Alum cap, Type 2 mon.
356	713687.867	157725.063	1.052041A	set 3.25" Alum cap, Type 2 mon.
357	713648.361	158995.075	1.052045	set 3.25" Alum cap, Type 2 mon.
358	713712.485	159706.805	1.052046	set Hinge nail with Alum washer in median asphalt
359	716281.579	159942.982	1.056048A	set 3.25" Alum cap I270 median, Type 1 mon.
360	716792.160	159326.250	1.056048	find 3.25" Alum cap in PVC pipe GPS "Vasquez"
361	714218.351	157520.572	1.053041	set 2" Brass cap on 2" "Feno" rod

SUBACCOUNT 82908

SURVEY CONTROL POINT TABULATION

BRF 002-1(18) SH 2 AT UPRR AND SMITH RD.

PNT	NORTHING (feet)	EASTING (feet)	MONU. NO. (stamped on cap)	DESCRIPTION OF MONUMENTS
6	709286.997	157217.611	1.045040	set 3.25" Alum cap Colorado Blvd. median Type 1 mon
7	708312.998	157210.735	1.043040	set 3.25" Alum cap in conc. median Co. bl. Type 5 mon
8	708070.849	156774.055	1.042038	set 3.25" Alum cap Type 1 mon
9	707102.489	156523.714	1.040038	set 3.25" Alum cap Type 1 mon
10	707072.527	157281.612	1.040040	set 3.25" Alum cap Type 1 mon
11	706396.121	157175.676	1.039039	set 3.25" Alum cap Type 1 mon
12	705772.614	157227.061	1.038040	set 3.25" Alum cap Type 1 mon
13	704391.644	157275.942	1.035040	set 3.25" Alum cap in conc. curb ramp Type 5 mon
14	704452.839	158950.155	1.035046	set 3.25" Alum cap Type 1 mon
15	705660.351	159684.084	1.037048	set 3.25" Alum cap in curb head Type 5 mon
16	706696.841	159681.558	1.039048	set 3.25" Alum cap in curb head Type 5 mon
17	708251.015	159681.884	1.042048	set 3.25" Alum cap in concrete walk Type 3 mon
18	706335.814	156544.279	1.043044	set 3.25" Alum cap Type 1 mon
19	708267.170	157389.148	1.043041	set 3.25" Brass cap in curb head Type 5 mon
20	706799.004	157150.892	1.044039	set 3.25" Alum cap Type 1 mon
21	706741.739	157282.250	1.044040	set 3.25" Alum cap Type 1 mon
350	708774.826	157274.390	1.046040	set 1.875" Brass cap on N.E. corner of bridge over I-70 on Colorado Blvd.
351	711080.900	157245.381	1.048040	set 1.125" Brass cap in N. median north of intersection
359	716281.579	159942.982	1.056048A	set 3.25" Alum cap I270 median Type 1 mon.
360	716792.160	159326.250	1.056048	find 3.25" Alum cap in PVC pipe GPS "Vasquez"
538	707982.641	157624.063	1.042043	set 2" Brass cap on "Feno" rod

SUBACCOUNT 82064

TABULATION OF ALIQUOT CORNERS TO BE SET

PNT	NORTHING (FT)	EASTING (FT)	DESCRIPTION OF MONUMENTS

GENERAL NOTES

- This Survey plan is not a complete boundary survey of all adjoining owners and is prepared for CDOT purposes Only.
- NOTICE: According to Colorado law you must commence any legal action based upon any defect in this survey within three years after you first discover such defect. In no event, may any action based upon any defect in this survey be commenced more than ten years from the date of the certification shown hereon.
- All coordinates listed are project coordinates only.
- Field survey control precision computed to exceed 1 : 100,000.
- BASIS OF BEARINGS:

The location is the C.L. Median of I-270 near the N 1/4 cor. sec. 18, T3S, R67W. Bearing from CP 2 (#1.056048A) 3.25" Alum. cap in median of I-270 to CP 3 (#1.059043) 3.25" Alum. cap in median of I-270 was determined by Solar observation to be N. 44°00'01" W.

FILING CERTIFICATION

Deposited this _____ day of _____, 19____, at _____ M.,
in Book _____ of the County Surveyor's Land Survey/
Right-of-Way surveys at Page _____, Reception No. _____

County Surveyor

By Deputy County Surveyor.

SURVEYOR CERTIFICATE (FIELD)

Control Survey and Monumentation was done under my supervision and checking.

NAME Frank J. Knowles P.L.S. NO. 22571

DATE 4/9/96

SURVEYOR CERTIFICATE (OFFICE)

These Control Diagram Sheets were prepared under my supervision and checking.

NAME Tom Adams P.L.S. NO. 26280

DATE 22 Jan 1996

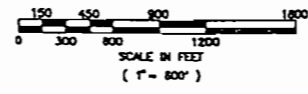
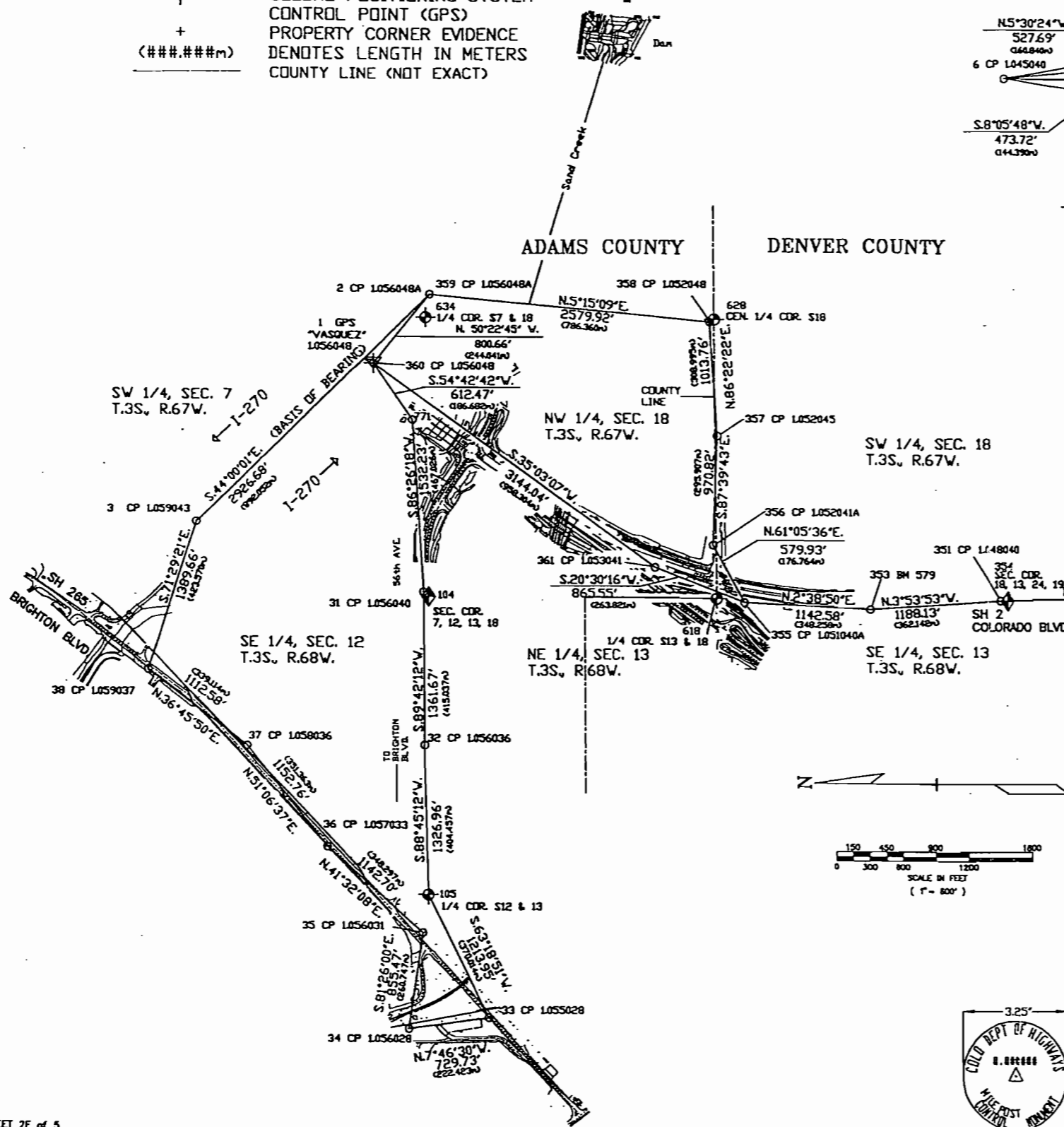
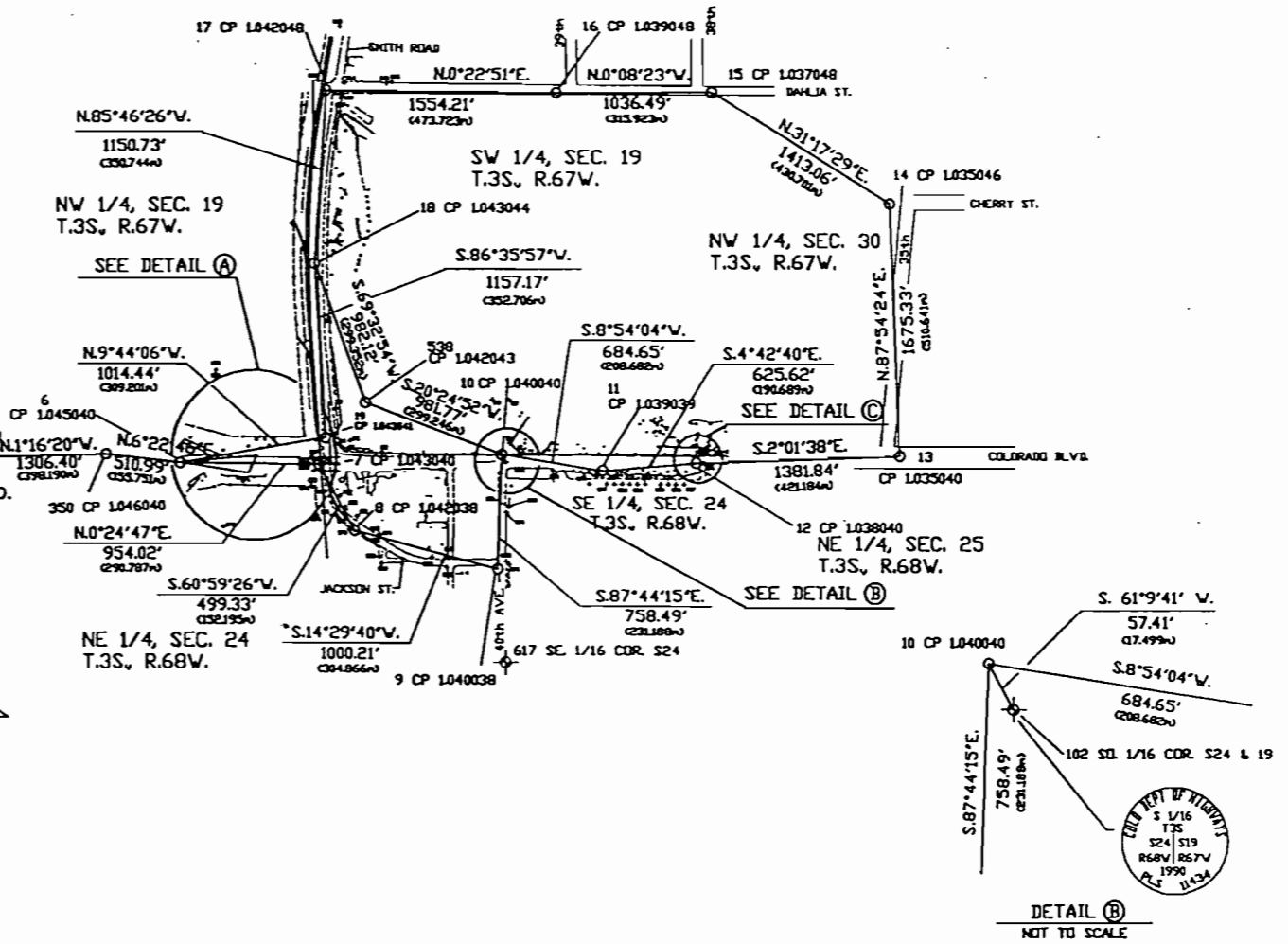
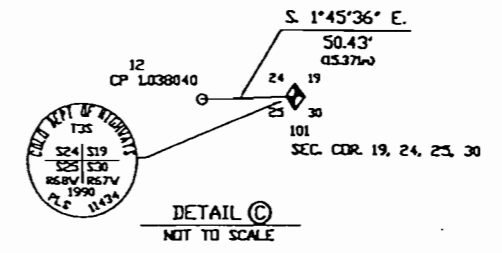
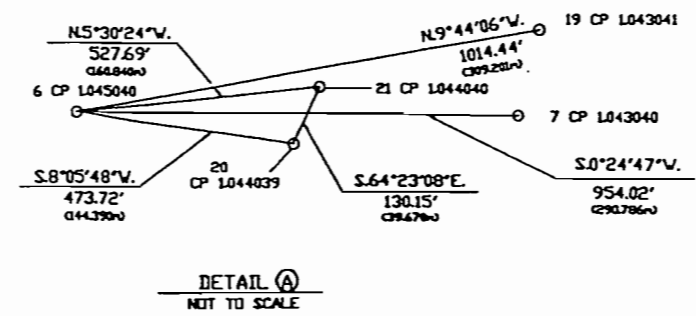
COLORADO DEPARTMENT OF TRANSPORTATION

SURVEY CONTROL DIAGRAM

IN SECTIONS 7,18,19,30, T. 3 S., R. 67 W., and SECTIONS
12,13,24,25, T. 3 S., R. 68 W., OF THE 6th P.M.
ADAMS & DENVER COUNTIES

FED. ROAD REGION	DIVISION	PROJECT NUMBER	SHEET NUMBER
VIII	COLO.		
REVISIONS			

SYMBOL	DESCRIPTION
◆	SECTION CORNER
◇	SECTION QUARTER CORNER
⊕	SECTION SIXTEENTH CORNER
○	CONTROL POINT (CP)
⊕	GLOBAL POSITIONING SYSTEM CONTROL POINT (GPS)
+	PROPERTY CORNER EVIDENCE
(###.###m)	DENOTES LENGTH IN METERS
---	COUNTY LINE (NOT EXACT)



TYP. CONTROL POINT (CP)
MONUMENT STAMPED WITH
MONUMENT NUMBERS.

TYPE 1 MONUMENT—CDOH MONUMENT(3-1/4" CAP, 3/4" Ø ROD)
TYPE 1A MONUMENT—CDOH MONUMENT(3-1/4" CAP, 3/4" Ø ROD IN A MONUMENT BOX)
TYPE 2 MONUMENT—CDOH MONUMENT(3-1/4" CAP, 3/4" Ø FINNED ROD)
TYPE 3A MONUMENT—CDOH MONUMENT(3-1/4" CAP, 2-3/8" Ø PIPE IN A MONUMENT BOX)
TYPE 5 MONUMENT—CDOH MONUMENT(3-1/4" CAP, IN ROCK OR CONC. ENCASED IN GROUT)

COLORADO DEPARTMENT OF TRANSPORTATION 02/06/95 12-35003 E:\ACAD\SH2 IPM

FED. ROAD REGION	DIVISION	PROJECT NUMBER	SHEET NUMBER
VIII	COLO.		
REVISIONS			

LEGEND

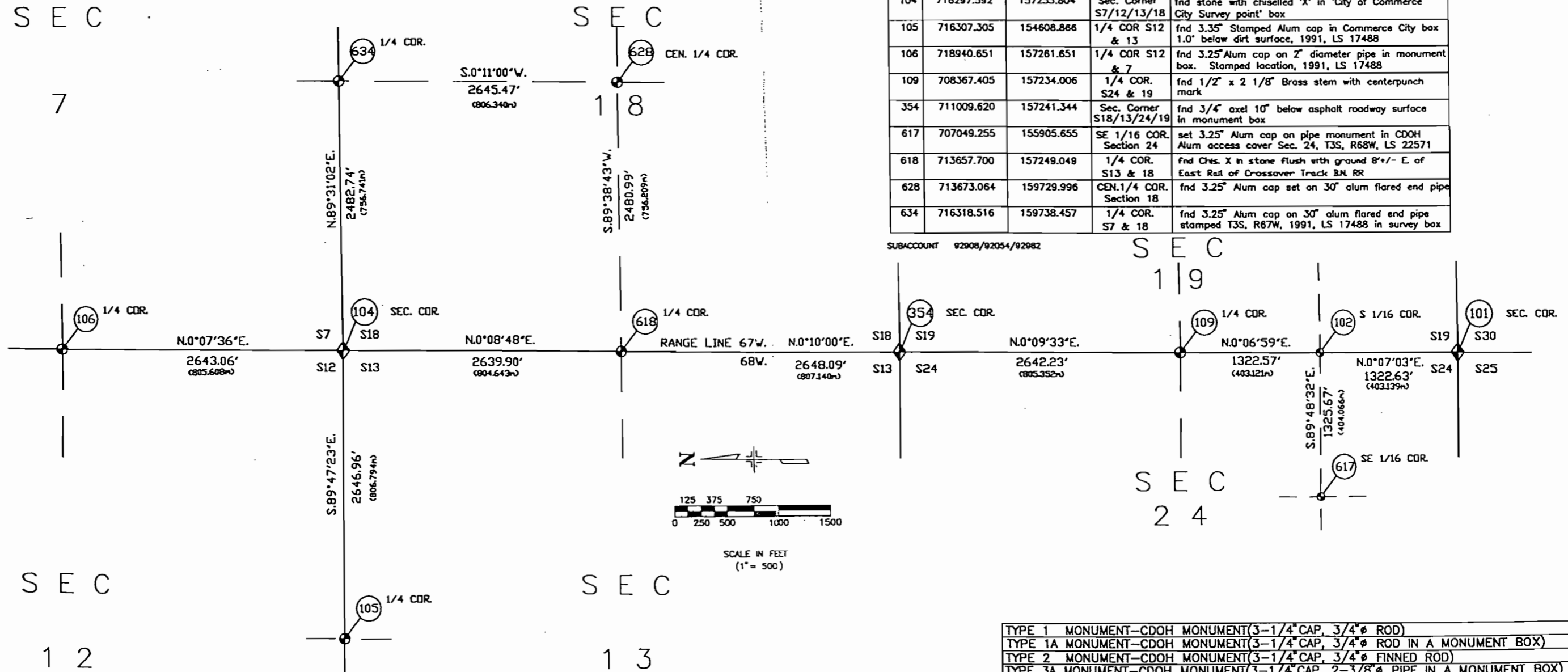
SYMBOL	DESCRIPTION
◆	SECTION CORNER
⊙	SECTION QUARTER CORNER
•	SECTION SIXTEENTH CORNER
○	CONTROL POINT (CP)
▽	GLOBAL POSITIONING SYSTEM CONTROL POINT (GPS)
(###.###m)	DENOTES LENGTH IN METERS
---	COUNTY LINE (NOT EXACT)
---	1/4 SECTION LINE
---	1/16 SECTION LINE

COLORADO DEPARTMENT OF TRANSPORTATION
SURVEY CONTROL DIAGRAM
 IN SECTIONS 7,18,19,30, T. 3 S., R. 67 W., and SECTIONS
 12,13,24,25, T. 3 S., R. 68 W., OF THE 6th P.M.
 ADAMS & DENVER COUNTIES

ALIQUOT CORNER TABULATION
CXBRF 12-002-35 / BRP 002-1(18) / BRP 265-1(2)
 Coordinates based on "U.S. SURVEY FEET"

PNT	NORTHING	EASTING	CORNER DESCRIPTION	DESCRIPTION OF MONUMENTS
101	705722.208	157228.610	Sec. Corner S18/24/25/30	fn'd 3.25" Stamped Alum cap in CDOH Alum access cover Sec. 24,25 T3S,R68W, Sec. 19,30 T3S,R67W, PLS 11434
102	707044.836	157231.322	S1/16th Corner S. 24 & S. 19	fn'd 3.25" Stamped Alum cap in CDOH Alum access cover Sec. 24 T3S, R68W Sec. 19 T3S, R67W PLS 11434
104	716297.592	157255.804	Sec. Corner S7/12/13/18	fn'd stone with chiselled 'X' in 'City of Commerce City Survey point' box
105	716307.305	154608.866	1/4 COR S12 & 13	fn'd 3.35" Stamped Alum cap in Commerce City box 1.0' below dirt surface, 1991, LS 17488
106	718940.651	157261.651	1/4 COR S12 & 7	fn'd 3.25" Alum cap on 2" diameter pipe in monument box. Stamped location, 1991, LS 17488
109	708367.405	157234.006	1/4 COR. S24 & 19	fn'd 1/2" x 2 1/8" Brass stem with centerpunch mark
354	711009.620	157241.344	Sec. Corner S18/13/24/19	fn'd 3/4" axel 10" below asphalt roadway surface in monument box
617	707049.255	155905.655	SE 1/16 COR. Section 24	set 3.25" Alum cap on pipe monument in CDOH Alum access cover Sec. 24, T3S, R68W, LS 22571
618	713657.700	157249.049	1/4 COR. S13 & 18	fn'd Ches. X in stone flush with ground B+/- E. of East Rail of Crossover Track B.N. RR
628	713673.064	159729.996	CEN.1/4 COR. Section 18	fn'd 3.25" Alum cap set on 30" alum flared end pipe
634	716318.516	159738.457	1/4 COR. S7 & 18	fn'd 3.25" Alum cap on 30" alum flared end pipe stamped T3S, R67W, 1991, LS 17488 in survey box

SUBACCOUNT 92908/92054/92982



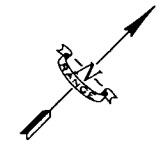
TYPE 1 MONUMENT—CDOH MONUMENT(3-1/4" CAP, 3/4" ROD)
TYPE 1A MONUMENT—CDOH MONUMENT(3-1/4" CAP, 3/4" ROD IN A MONUMENT BOX)
TYPE 2 MONUMENT—CDOH MONUMENT(3-1/4" CAP, 3/4" FINNED ROD)
TYPE 3A MONUMENT—CDOH MONUMENT(3-1/4" CAP, 2-3/8" PIPE IN A MONUMENT BOX)
TYPE 5 MONUMENT—CDOH MONUMENT(3-1/4" CAP, IN ROCK OR CONC. ENCASED IN GROUT)

COLORADO DEPARTMENT OF TRANSPORTATION 02/06/95 12:35:03 E:\ACAD\ALIQUOT IPM



Region 6
2000 S. Holly Street
Denver, CO 80222
Phone: (303)757-9923 FAX: (303)757-9053

Sheet Revisions		
mm/dd/yy	XXXX	XXX

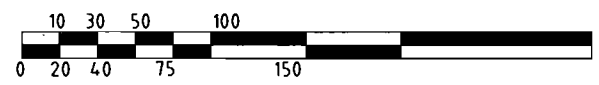


RIGHT OF WAY	
NAME OF SHEET	
BR 0021-024	
S.H. 2-Vasquez Road	
PROJECT CODE: 12322	SHEET NUMBER: 5

RIGHT OF WAY PLANS UNIT: Scott Kimminau

R.O.W TABULATION OF PROPERTY IN ADAMS COUNTY				AREA IN SQ. FEET		
PARCEL NO.	OWNER	ADDRESS	LOCATION T. 3S., R. 67W., 6TH P.M. Tract 1, R/W SUBDIVISION N.W. 1/4 Section 18	PARCEL	REMAINDER	
					LEFT	RIGHT
1	VASQUEZ LAND ASSOCIATES LLC, A COLORADO LTD LIABILITY COMPANY	5301-5315 N. Vasquez Blvd. Commerce City, Colorado 80022		3,729	156,407	

NW 1/4
SECTION 18
T. 3 S. R. 67 W.



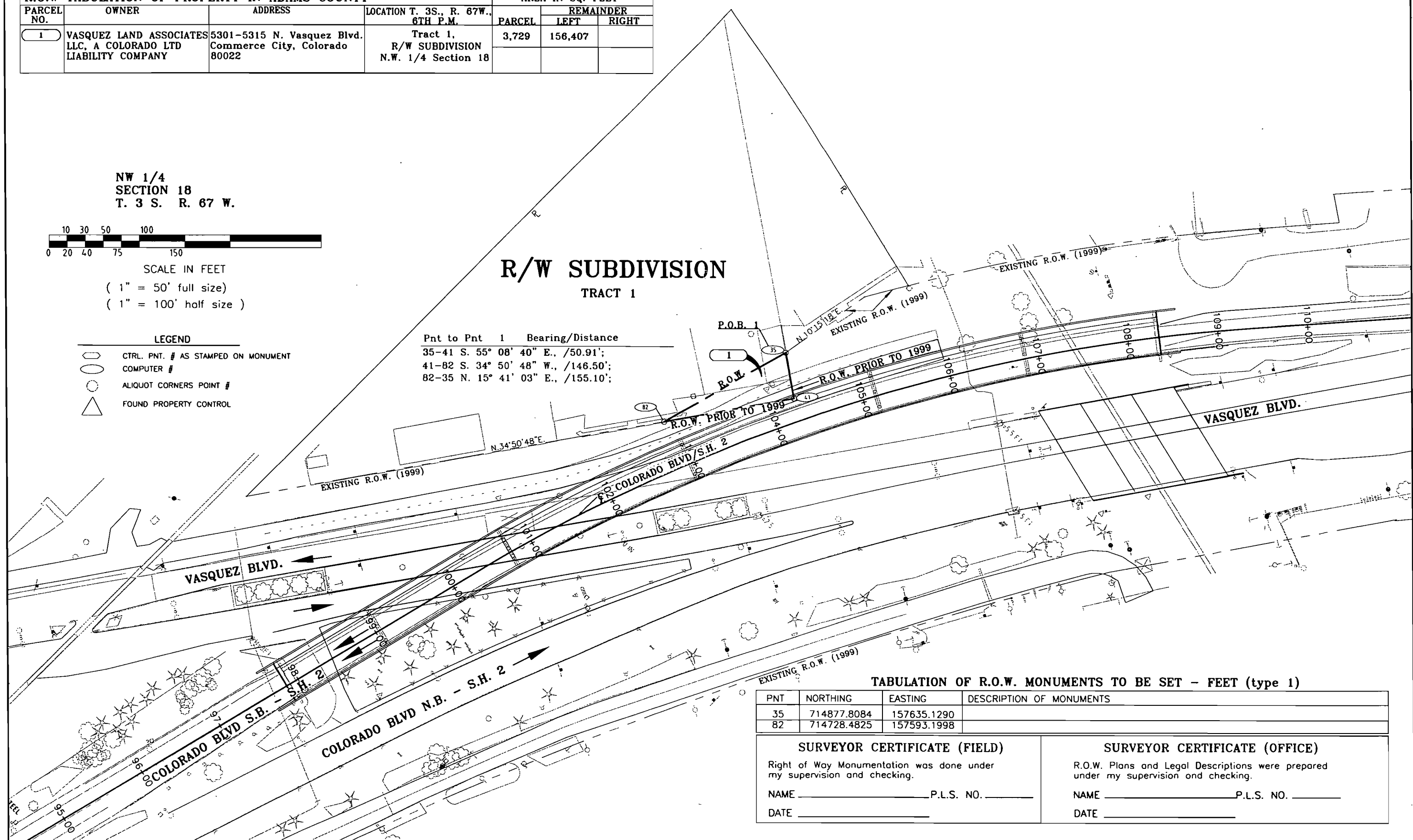
SCALE IN FEET
(1" = 50' full size)
(1" = 100' half size)

- LEGEND**
- CTRL. PNT. # AS STAMPED ON MONUMENT
 - COMPUTER #
 - ALIQUOT CORNERS POINT #
 - FOUND PROPERTY CONTROL

Pnt to Pnt 1 Bearing/Distance

35-41	S. 55° 08' 40" E., /50.91';
41-82	S. 34° 50' 48" W., /146.50';
82-35	N. 15° 41' 03" E., /155.10';

R/W SUBDIVISION TRACT 1



TABULATION OF R.O.W. MONUMENTS TO BE SET - FEET (type 1)

PNT	NORTHING	EASTING	DESCRIPTION OF MONUMENTS
35	714877.8084	157635.1290	
82	714728.4825	157593.1998	

<p>SURVEYOR CERTIFICATE (FIELD)</p> <p>Right of Way Monumentation was done under my supervision and checking.</p> <p>NAME _____ P.L.S. NO. _____</p> <p>DATE _____</p>	<p>SURVEYOR CERTIFICATE (OFFICE)</p> <p>R.O.W. Plans and Legal Descriptions were prepared under my supervision and checking.</p> <p>NAME _____ P.L.S. NO. _____</p> <p>DATE _____</p>
---	--