

ADD DEPT. OF HIGHWAYS
C. D. M. 124
BY 1954
TITLE SHEET

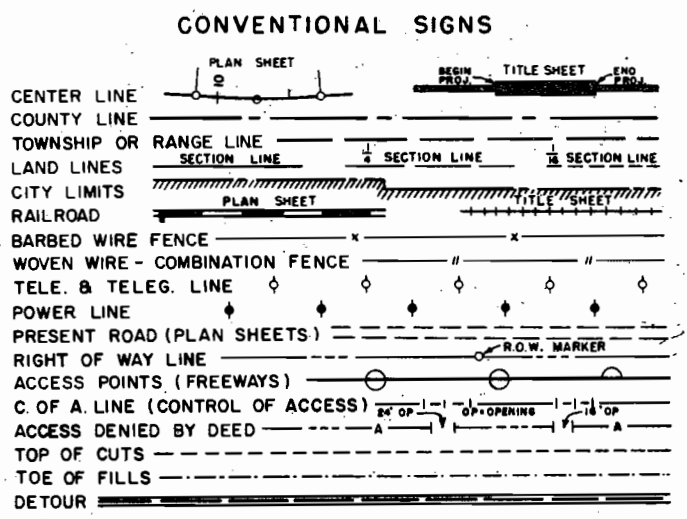
R.2 W., T.49 N., N.M.P.M.

COLORADO DEPARTMENT OF HIGHWAYS

FEDERAL ROAD REGION NO.	DIVISION	PROJECT NO.	SHEET NO.
9	COLORADO	CC-40-0006-31	1

RIGHT OF WAY IOLA - EAST

REVISIONS		
DATE	INDEX-Add New Sheets	VR
4/21/65		



PLAN AND PROFILE OF PROPOSED FEDERAL AID PROJECT NO. CC-40-0006-31 STATE HIGHWAY NO. 50 GUNNISON COUNTY

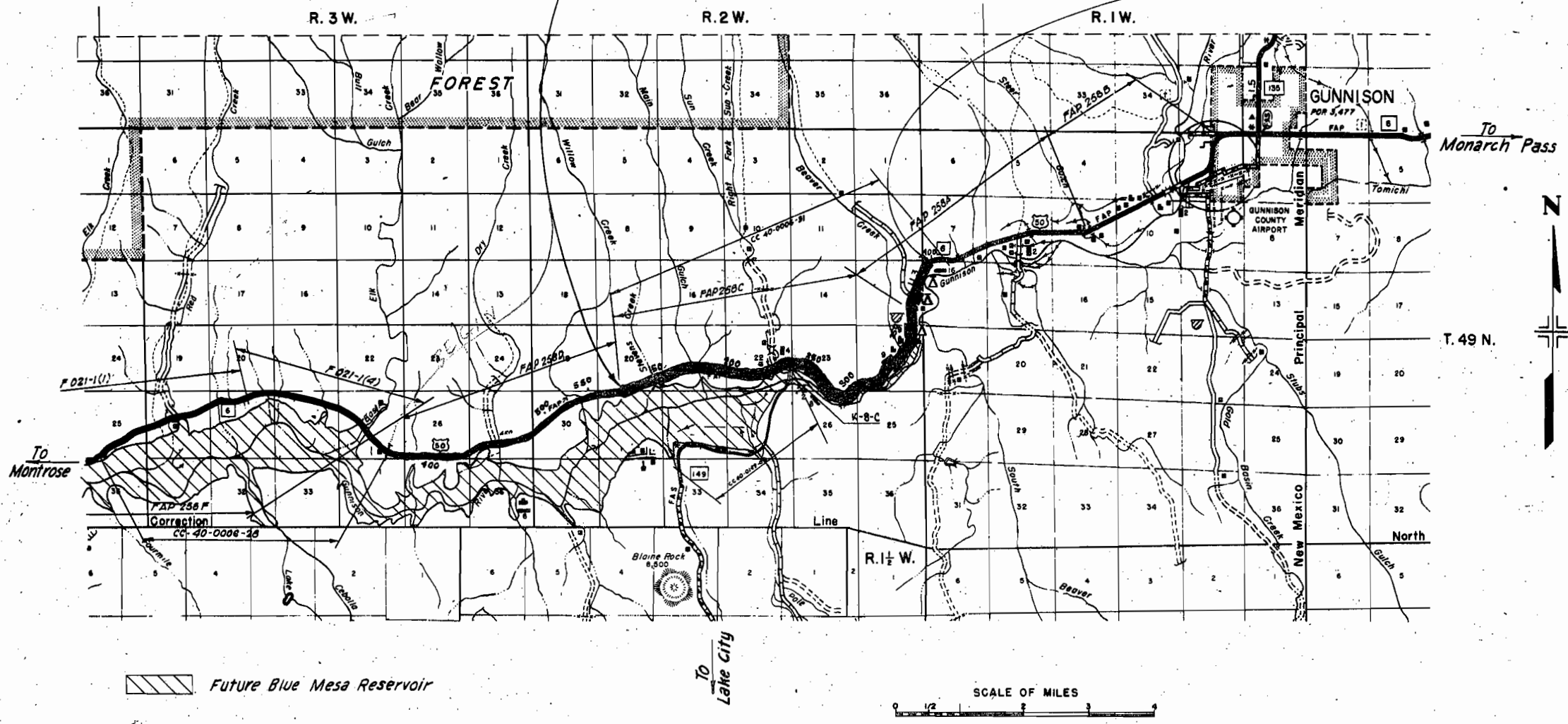
INDEX OF SHEETS
1 TITLE SHEET
2 TABULATION SHEET
3-15 PLAN & PROFILE SHEETS

SCALES OF ORIGINAL DRAWINGS

ON PLAN, 1 IN. = 100 FT.
ON PROFILE, 1 IN. = 100 FT. HORIZONTAL
1 IN. = 20 FT. VERTICAL
GRADE LINE ON PROFILE IS SHOWN AS GRADE OF FINISHED ROAD
GROSS LENGTH OF PROJECT
NET LENGTH OF PROJECT

STA. 105+00.0 BEGIN CC-40-0006-31
Sta. 573+67.8 End F O 21-(15)

STA. 445+00 END CC-40-0006-31
Iola - East



A.H.T.

R. O. W. TABULATION OF PROPERTIES IN

GUNNISON

COUNTY S.H.No. 6

PROJ

CC-40-0006-31

FEDERAL ROAD DIVISION NO.	DISTRICT	PROJECT NO.	SHEET NO.
9	COLORADO	CC-40-0006-31	2

RIGHT OF WAY IOLA - EAST

PARCEL NO.	OWNER	ADDRESS	LOCATION	AREA IN ACRES				PURCHASE DATA					REMARKS	NO.	
				PARCEL	TO BE ACQUIRED	REMAINDER		LAND	IMPROV'M'TS	DAMAGE	MISC.	TOTAL			
			T. 49 N., R. 2 W. N.M.P.M.			LT.	RT.								
1 Rev	UNITED STATES OF AMERICA		SW 1/4 SE 1/4, SEC. 13	0.808	0.808										
2 Rev	MALCOLM J. COOPER AND MARGARET E. J.T.	COOPER RESORT GUNNISON, COLORADO	E 1/2 SE 1/4, SEC. 13	4.306	4.306										
3 Rev	UNITED STATES OF AMERICA		W 1/2 SE 1/4, SEC. 13	3.023	3.023										
4 Rev	UNITED STATES OF AMERICA		W 1/2 SE 1/4 NE 1/4, SEC. 13	3.143	3.043	1.19	15.32								
5	WILLIAM C. TAYLOR AND LEONA L. J.T.	NEVERSINK RESORT GUNNISON, COLORADO	E 1/2 SE 1/4 NE 1/4 AND SE 1/4 NE 1/4 NE 1/4, SEC.13	15.476	9.521	22.86	35.25								
			T. 49 N., R. 1 W. N.M.P.M. LOT 1, SEC. 18 SURVEY NO. 17587, SEC. 7												
			ALL IN NEVERSINK PLACER												
6	WILLIAM C. TAYLOR AND LEONA L. TAYLOR, J.T. LAWRENCE E. PHELPS.		SE 1/4 SW 1/4, SEC. 7	0.999	0.139	2.27	0.37								6
6-A	WILLIAM C. TAYLOR AND LEONA L. TAYLOR, J.T. LAWRENCE E. PHELPS.		SE 1/4 SW 1/4, SEC. 7	0.302	0.058										6-A
7	LAWRENCE E. PHELPS	GUNNISON, COLORADO	SE 1/4 SW 1/4, SEC. 7	0.978	0.086	240.39									7
			T. 49 N., R. 1 W. N.M.P.M.												
TE 5	WILLIAM C. TAYLOR AND LEONA L. J.T.	NEVERSINK RESORT GUNNISON, COLORADO	LOT 1, SEC. 18 SURVEY NO. 17587, SEC. 7	0.084	0.084								TEMPORARY EASEMENT		TE 5
8	STATE OF COLORADO, FOR THE USE OF THE GAME AND FISH COMMISSION		ALL IN NEVERSINK PLACER SE 1/4 SW 1/4 SEC. 7	3.499	3.499										8
			T. 49 N., R. 2 W. N. M. P. M.												
13	U. S. LAND BUREAU OF RECLAMATION		SE 1/4 SE 1/4 SW 1/4, Sec. 20	17.160	17.160										13
14	U. S. LAND BUREAU OF RECLAMATION		S 1/2, Sec. 21	31.882	31.882										14
15	U. S. LAND BUREAU OF RECLAMATION		NE 1/4 SE 1/4, S 1/2, Sec. 22	32.450	32.450										15
16	U. S. LAND BUREAU OF RECLAMATION		NW 1/4 SW 1/4, S 1/2 S 1/2, Sec. 23	22.652	22.652										16
17	U. S. LAND BUREAU OF RECLAMATION		N 1/2 NW 1/4, Sec. 26	3.493	3.493										17
18	U. S. LAND BUREAU OF RECLAMATION		NE 1/4 NE 1/4, Sec. 26	2.432	2.432										18
19	U. S. LAND BUREAU OF RECLAMATION		S 1/2 SW 1/4, NE 1/4 SW 1/4, NW 1/4 SE 1/4, SE 1/4 NW 1/4, S 1/2 NE 1/4, NE 1/4 NE 1/4, Sec. 24	44.502	44.502										19
20	U. S. LAND BUREAU OF RECLAMATION		SE 1/4 SE 1/4, Sec. 13	5.617	5.617										20

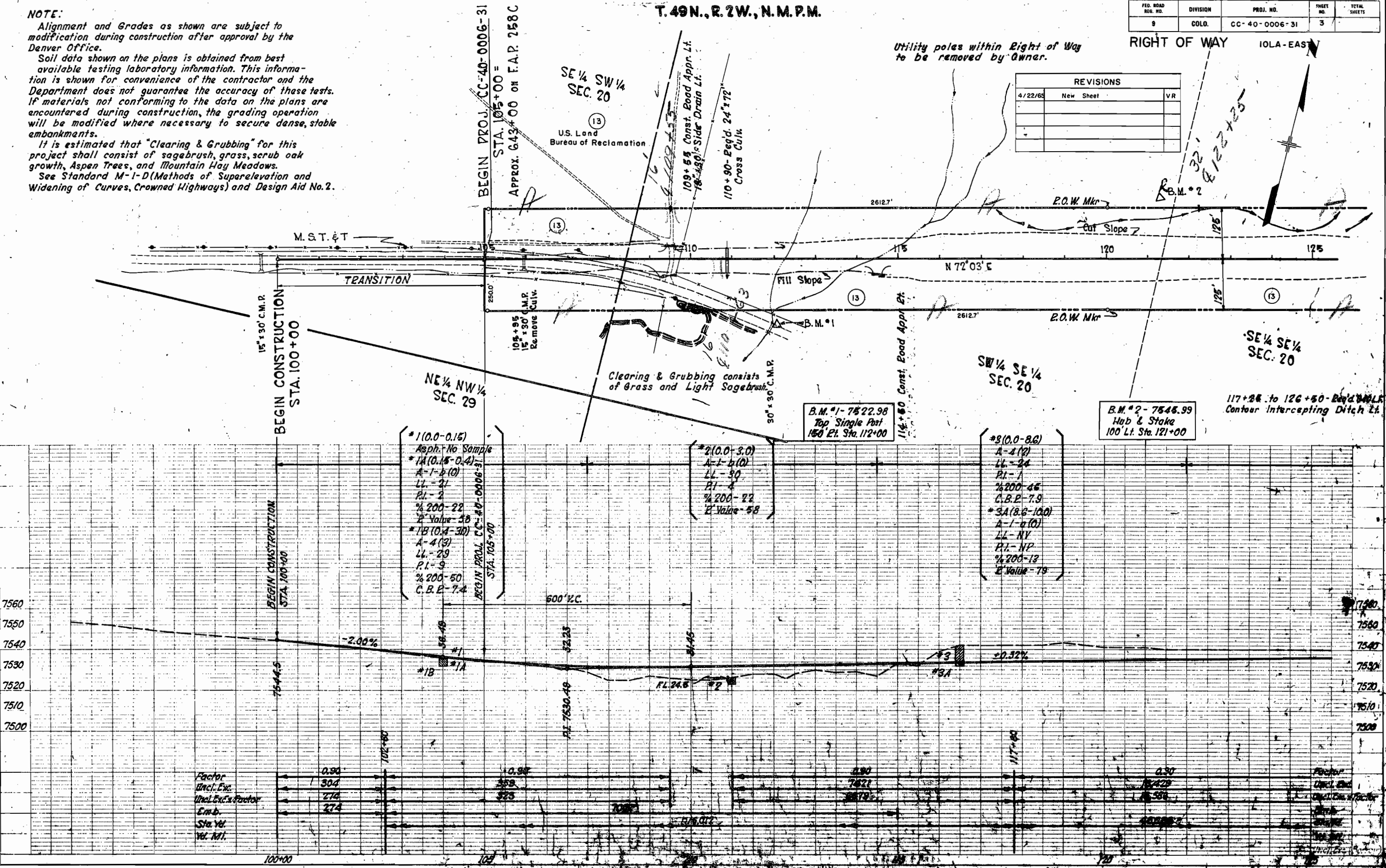
REVISIONS		
9-6-63	Rev. Parcels 1, 2, 3 & 4	FCM
4-22-65	Add Parcels 13 to 20	VR

T. 49N., R. 2W., N.M.P.M.

FED. ROAD DIST. NO.	DIVISION	PROJ. NO.	SHEET NO.	TOTAL SHEETS
9	COLD.	CC-40-0006-31	3	

NOTE:
 Alignment and Grades as shown are subject to modification during construction after approval by the Denver Office.
 Soil data shown on the plans is obtained from best available testing laboratory information. This information is shown for convenience of the contractor and the Department does not guarantee the accuracy of these tests. If materials not conforming to the data on the plans are encountered during construction, the grading operation will be modified where necessary to secure dense, stable embankments.
 It is estimated that "Clearing & Grubbing" for this project shall consist of sagebrush, grass, scrub oak growth, Aspen Trees, and Mountain Hay Meadows. See Standard M-1-D (Methods of Superelevation and Widening of Curves, Crowned Highways) and Design Aid No. 2.

REVISIONS		
4/22/65	New Sheet	VR



#1 (0.0-0.15)
 Asph. No Sample
 *1A (0.15-0.4)
 A-1-b(0)
 LL-21
 PI-2
 %200-22
 C.P. Value-58
 *1B (0.4-30)
 A-4(3)
 LL-29
 PI-9
 %200-50
 C.B.P-7.4

#2 (0.0-3.0)
 A-1-b(0)
 LL-30
 PI-2
 %200-72
 C.P. Value-58

#3 (0.0-8.0)
 A-4(2)
 LL-24
 PI-1
 %200-45
 C.B.P-7.9
 *3A (8.0-100)
 A-1-a(0)
 LL-NV
 PI-NP
 %200-13
 C.P. Value-79

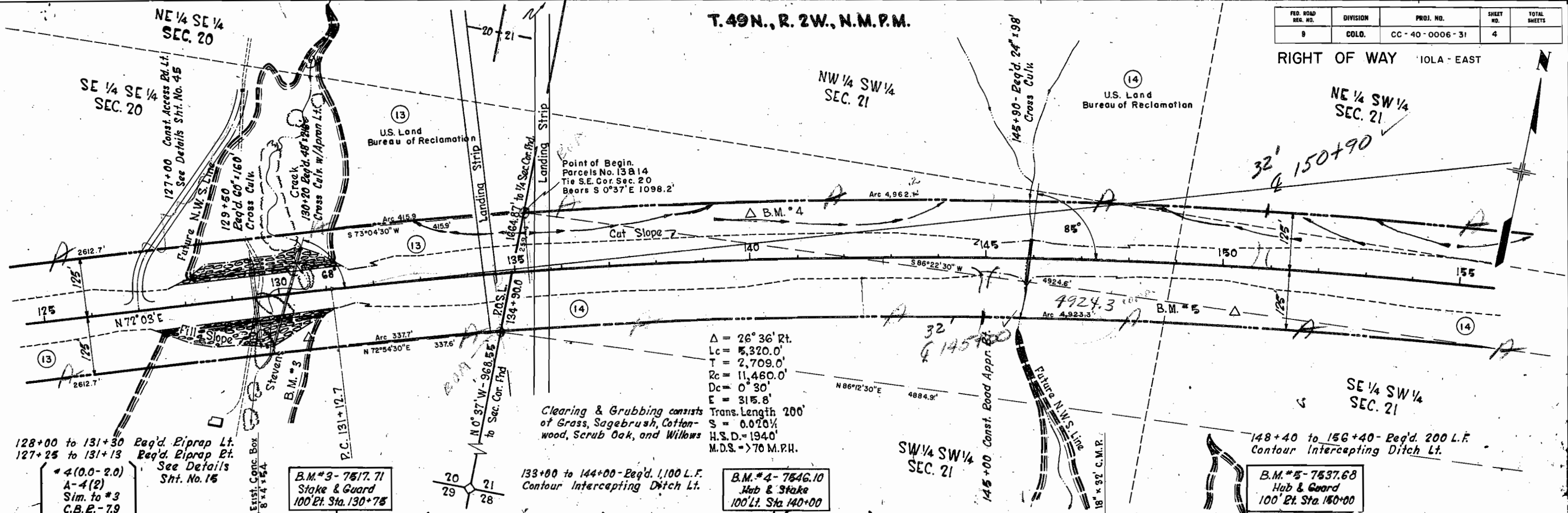
Factor	0.90	0.90
Incl. Exc.	304	359
Incl. Exc. x Factor	274	323
Emb.	274	
Sta. Vol.		
Vol. Mt.		

Factor	0.90
Incl. Exc.	10429
Incl. Exc. x Factor	9386
Emb.	
Sta. Vol.	
Vol. Mt.	

T. 49N., R. 2W., N.M.P.M.

FED. ROAD DIST. NO.	DIVISION	PROJ. NO.	SHEET NO.	TOTAL SHEETS
9	COLO.	CC-40-0006-31	4	

RIGHT OF WAY IOLA - EAST



$\Delta = 26^\circ 36' \text{ Rt.}$
 $L_c = 5,320.0'$
 $T = 2,709.0'$
 $R_c = 11,460.0'$
 $D_c = 0^\circ 30'$
 $E = 315.8'$
 $\text{Trans. Length } 200'$
 $S = 0.020\%$
 $\text{H.S.D.} = 1940'$
 $\text{M.D.S.} = 70 \text{ M.P.H.}$

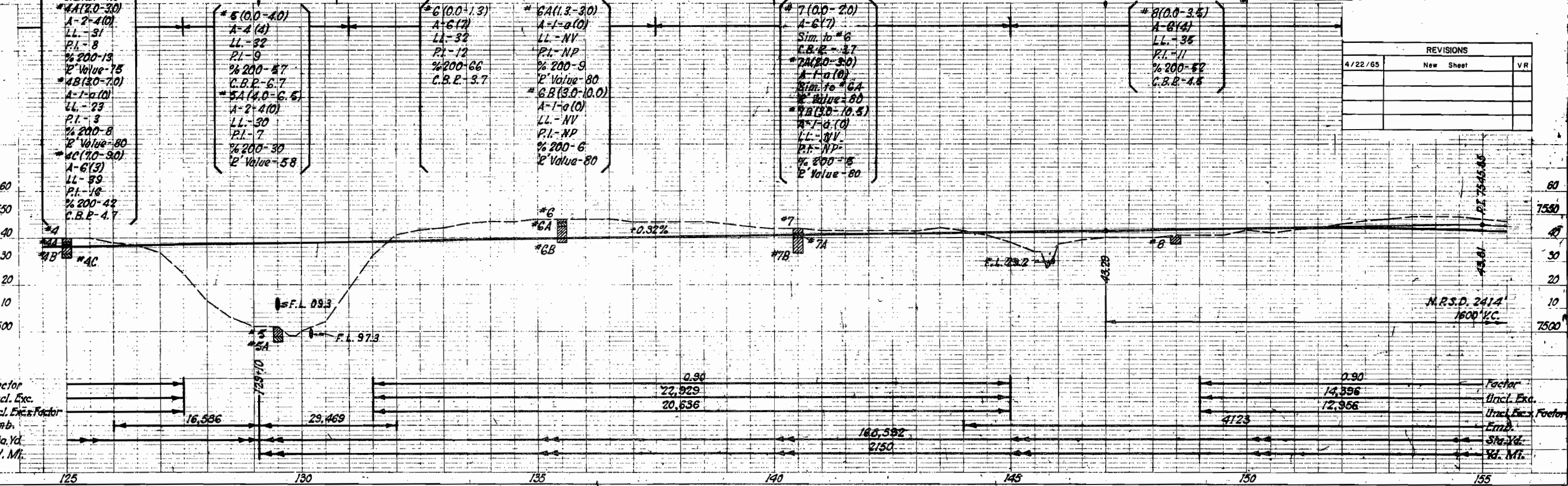
128+00 to 131+30 Req'd. Piprap Lt.
 127+25 to 131+13 Req'd. Piprap Rt.
 See Details Sht. No. 15
 #4(0.0-2.0)
 A-4(2)
 Sim. to #3
 C.B.E. - 7.9
 #4A(2.0-3.0)
 A-2-4(0)
 LL - 31
 P.I. - 8
 % 200-13
 P' Value - 75
 #4B(3.0-7.0)
 A-1-a(0)
 LL - 23
 P.I. - 3
 % 200-8
 P' Value - 80
 #4C(7.0-9.0)
 A-6(3)
 LL - 89
 P.I. - 16
 % 200-42
 C.B.E. - 4.7

B.M.#3 - 7517.71
 Stake & Guard
 100' Lt. Sta. 130+75

133+80 to 144+00 - Req'd. 1,100 L.F.
 Contour Intercepting Ditch Lt.

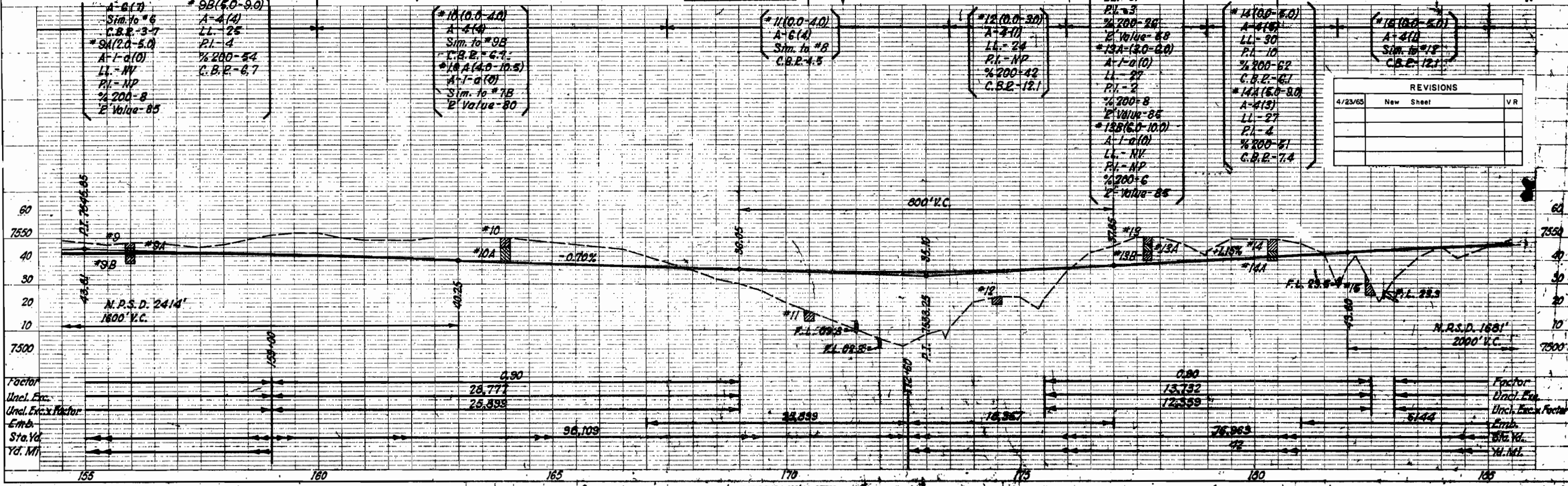
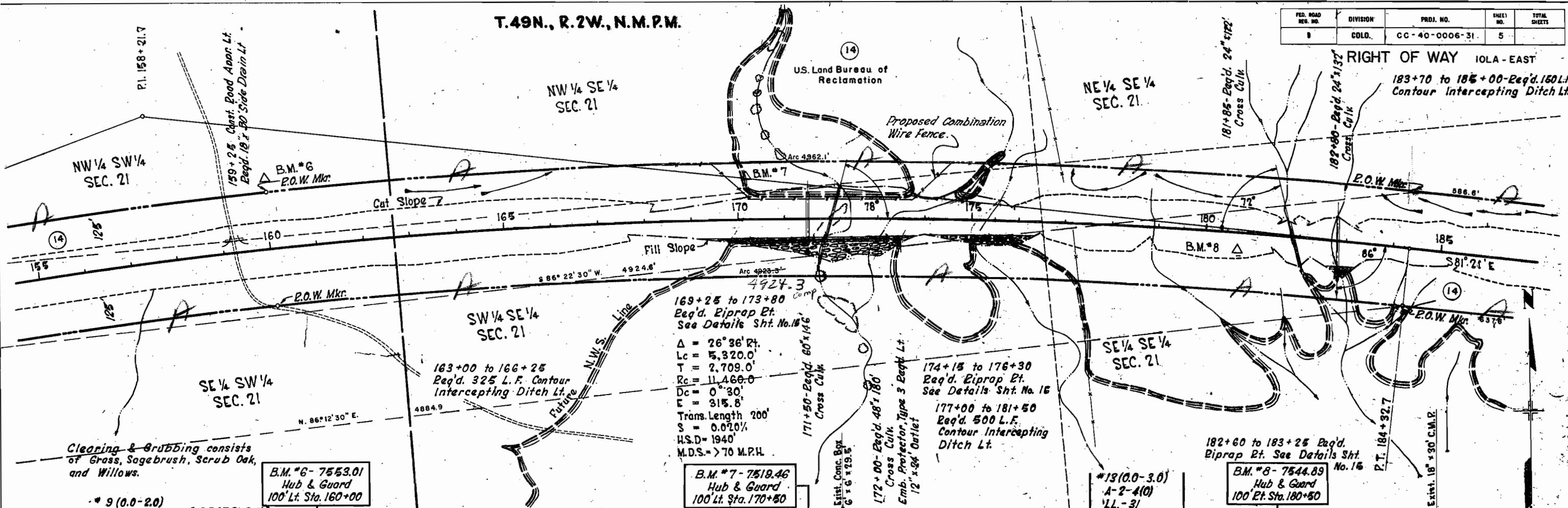
B.M.#4 - 7546.10
 Hub & Stake
 100' Lt. Sta. 140+00

B.M.#5 - 7537.68
 Hub & Stake
 100' Lt. Sta. 150+00

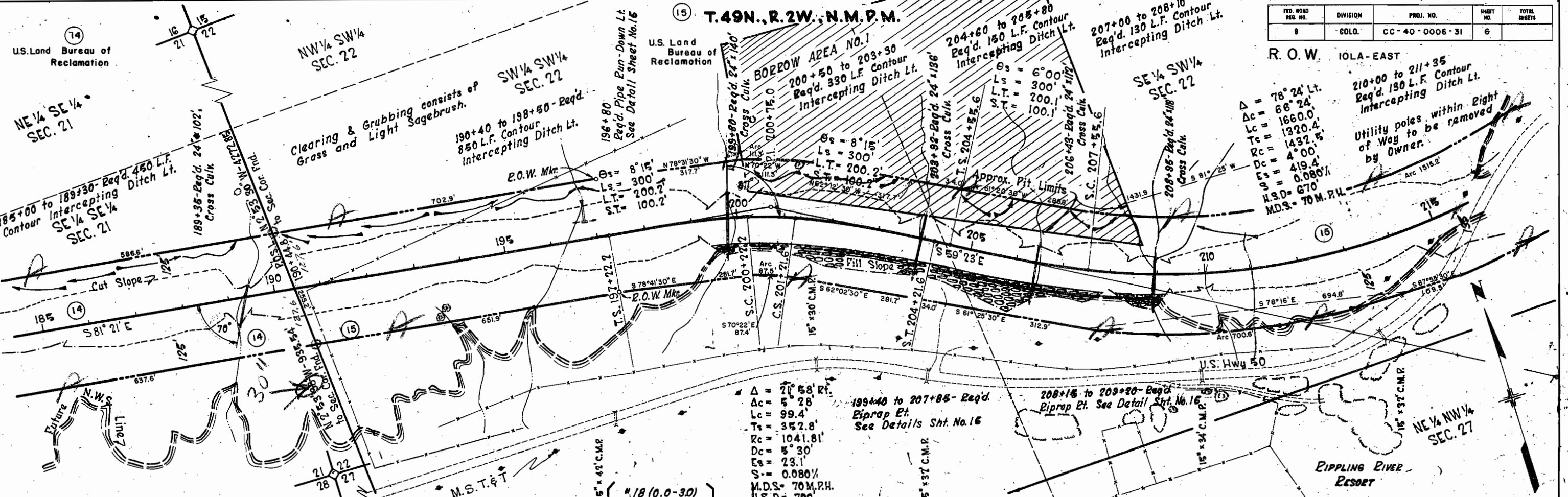


T.49N., R.2W., N.M.P.M.

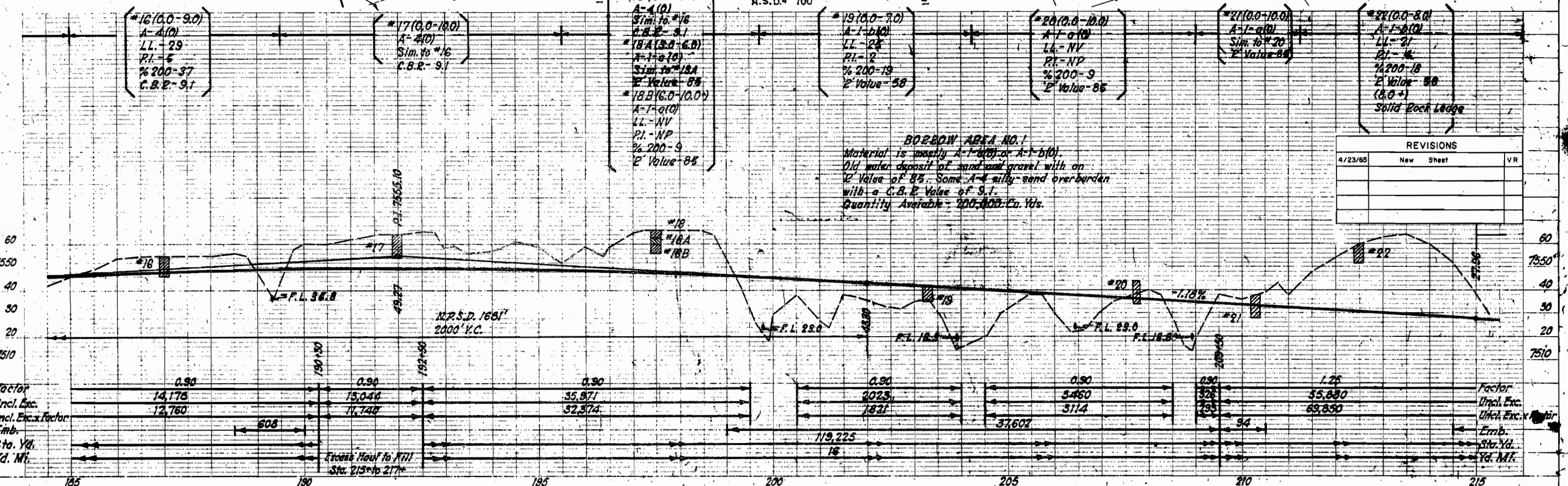
FED. ROAD DIST. NO.	DIVISION	PROJ. NO.	SHEET NO.	TOTAL SHEETS
5	COLO.	CC-40-0006-31	5	



REVISIONS		
4/23/65	New Sheet	VR



FED. ROAD DIST. NO.	DIVISION	PROJ. NO.	SHEET NO.	TOTAL SHEETS
8	COLO.	CC-40-0006-31	6	

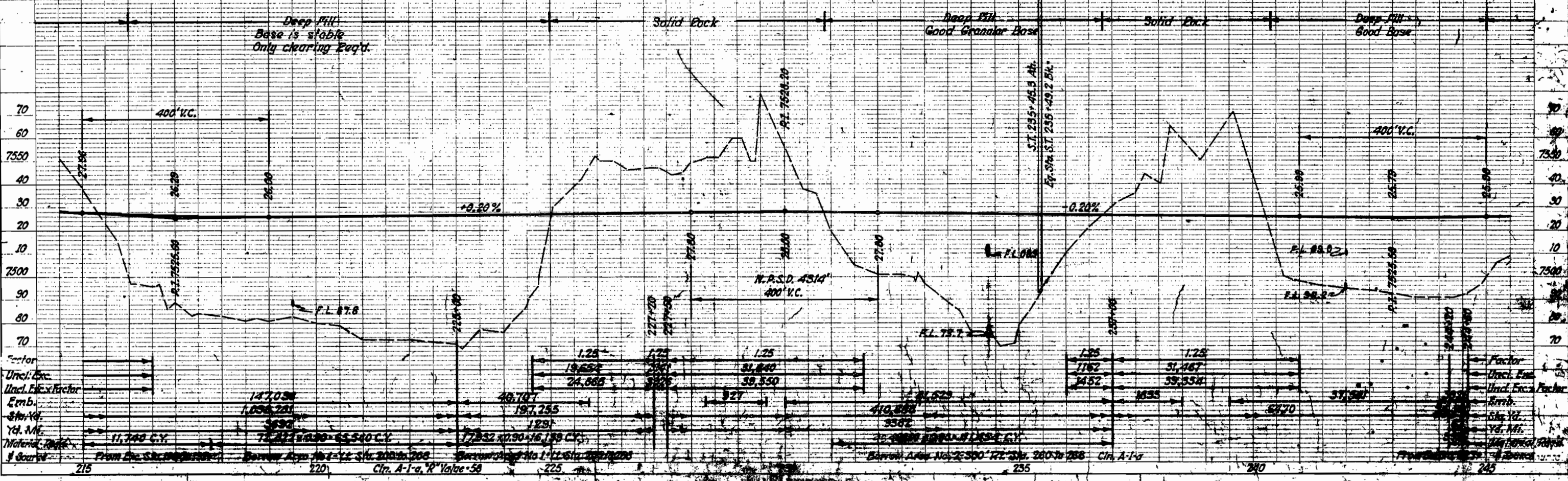
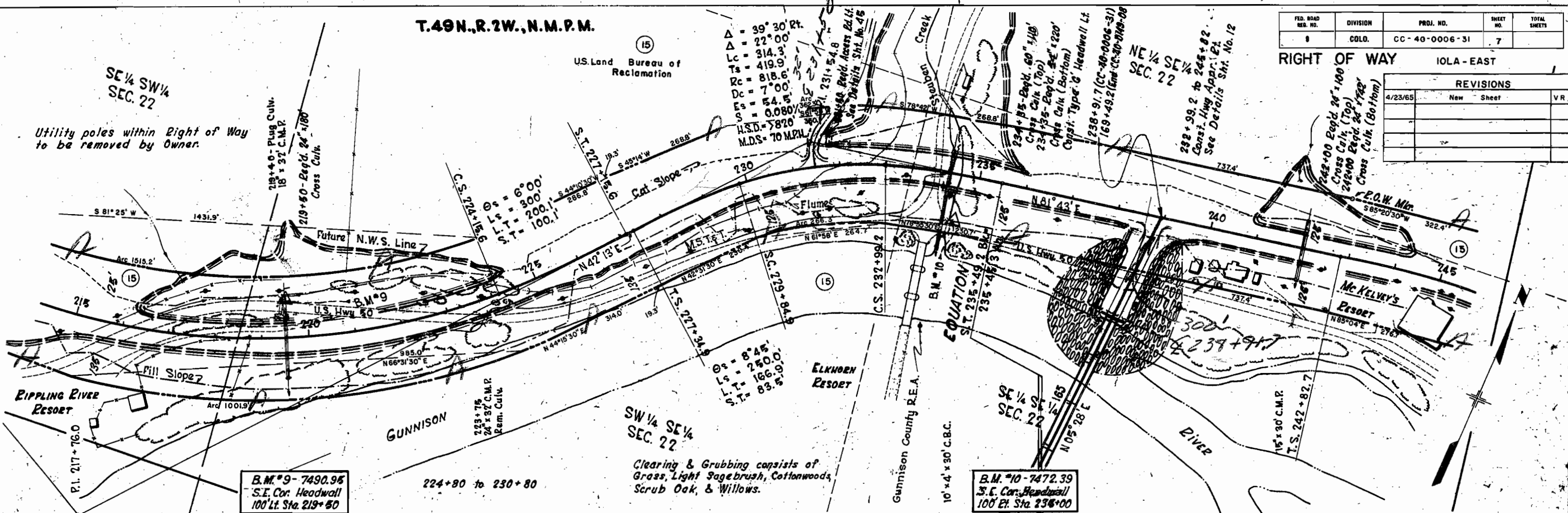


T.49N., R.2W., N.M.P.M.

U.S. Land Bureau of Reclamation

FED. ROAD DIST. NO.	DIVISION	PROJ. NO.	SHEET NO.	TOTAL SHEETS
8	COLO.	CC-40-0006-31	7	

RIGHT OF WAY		IOLA - EAST	
REVISIONS			
4/23/65	New Sheet		VR

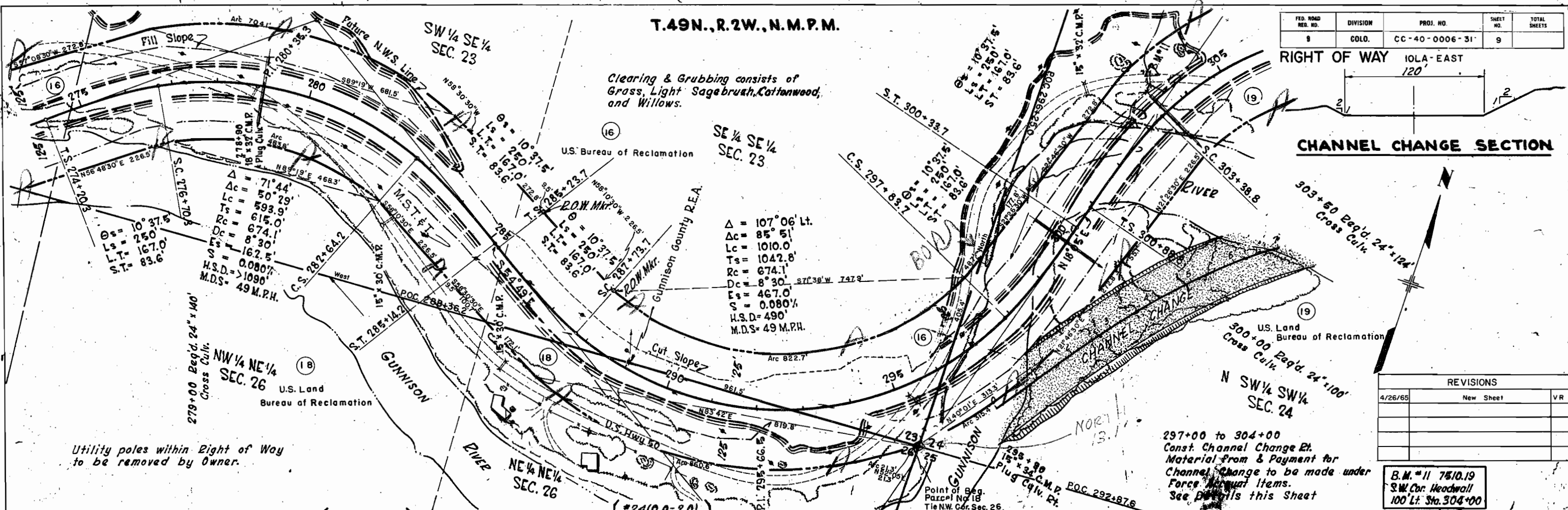


T.49N., R.2W., N.M.P.M.

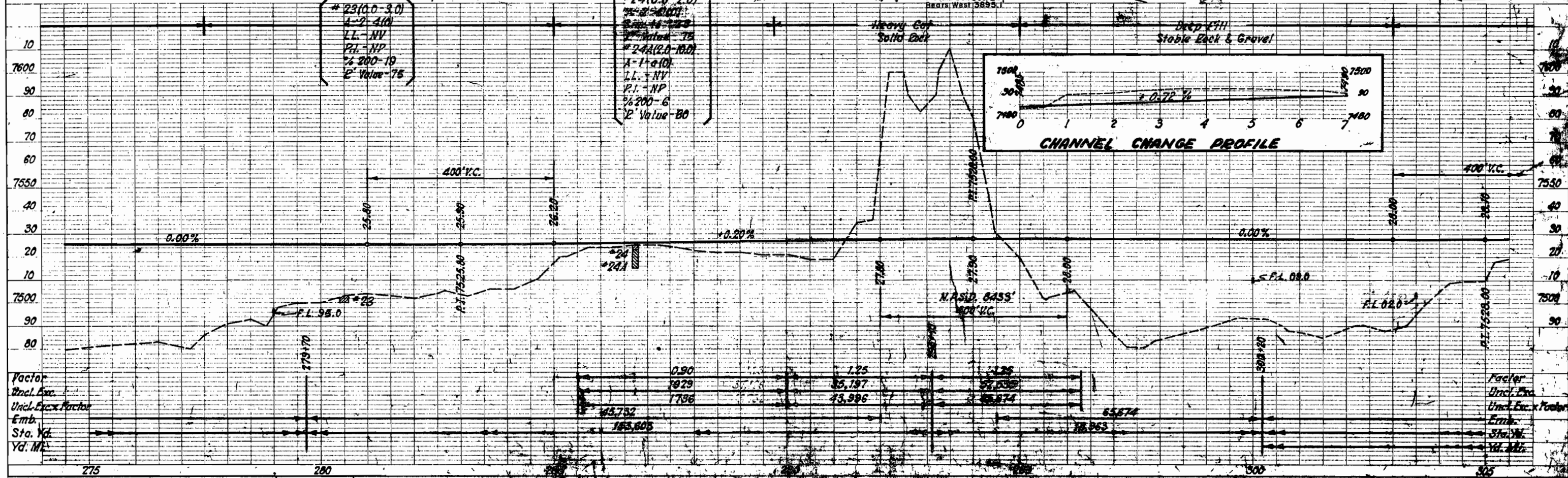
FED. ROAD DIST. NO.	DIVISION	PROJ. NO.	SHEET NO.	TOTAL SHEETS
9	COLO.	CC-40-0006-31	9	

RIGHT OF WAY IOLA-EAST
 120'

CHANNEL CHANGE SECTION



REVISIONS		
4/26/65	New Sheet	VR



7 1963

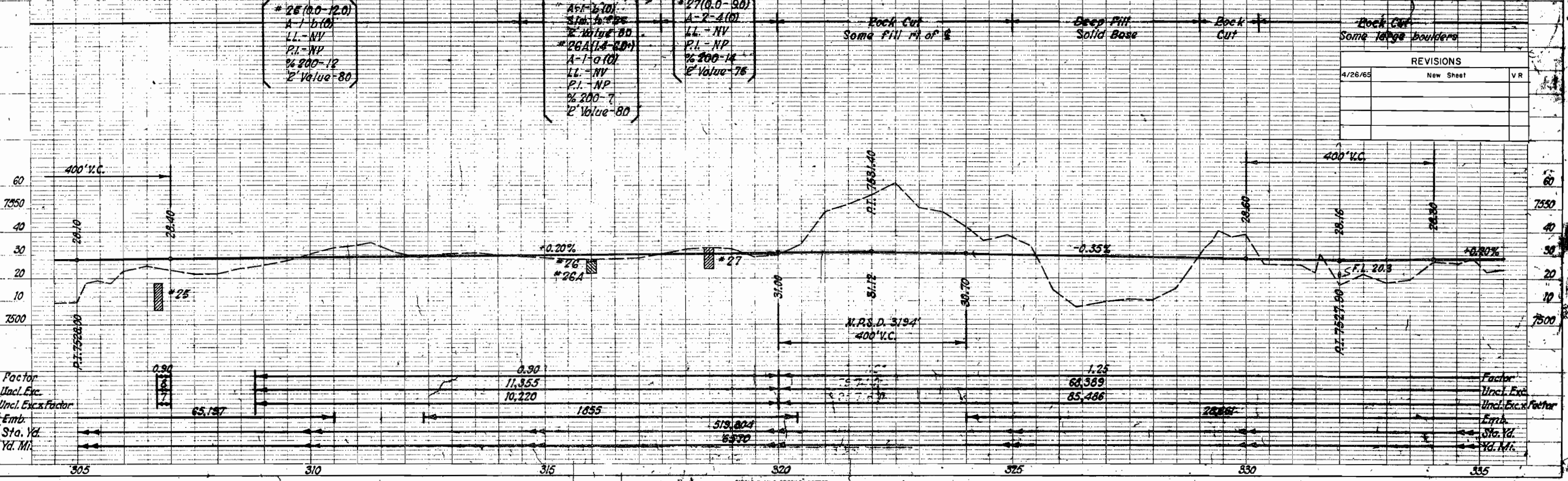
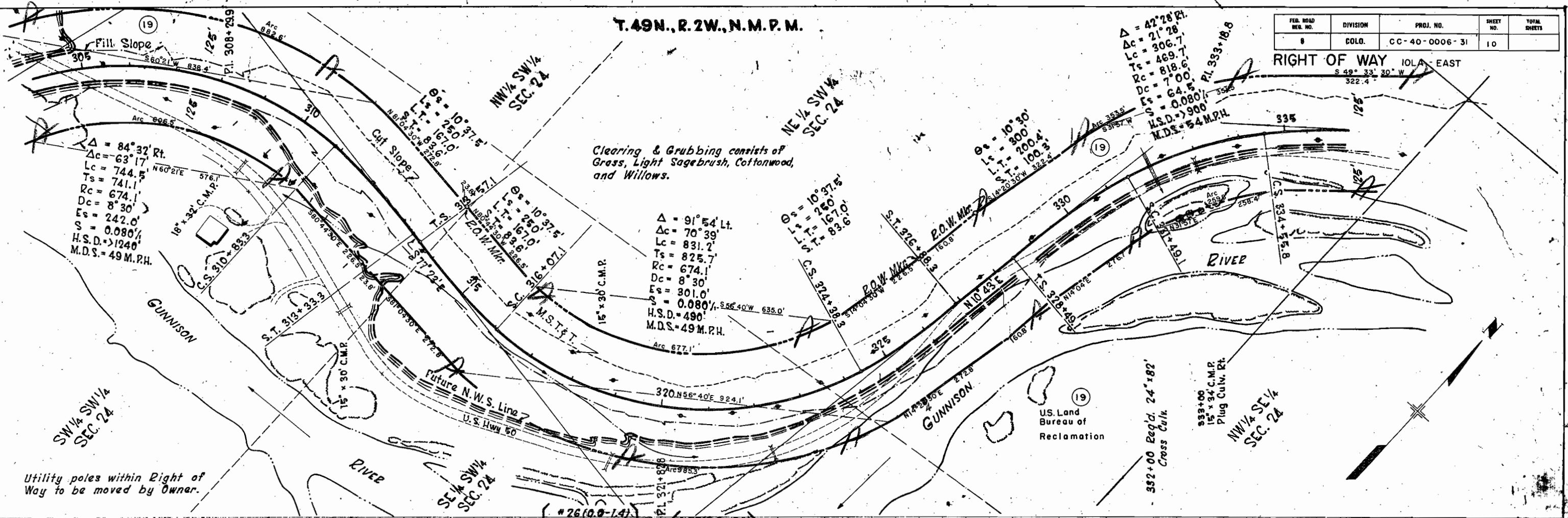
PLAN
CHECKED BY
NOTED BY
DATE

PROFILE
CHECKED BY
NOTED BY
DATE

T. 49N., R. 2W., N.M.P.M.

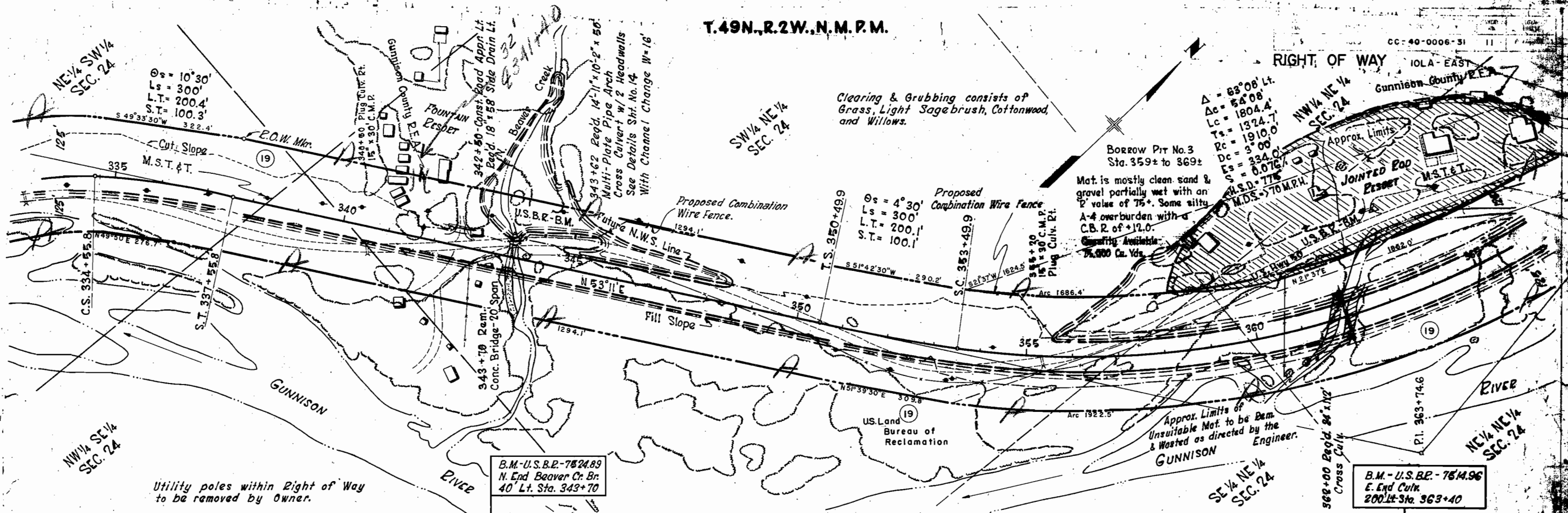
FED. ROAD DIST. NO.	DIVISION	PROJ. NO.	SHEET NO.	TOTAL SHEETS
8	COLO.	CC-40-0006-31	10	

RIGHT OF WAY IOLA - EAST
S 49° 33' 30" W
322.4'



T.49N.,R.2W.,N.M.P.M.

CC: 40-0006-31



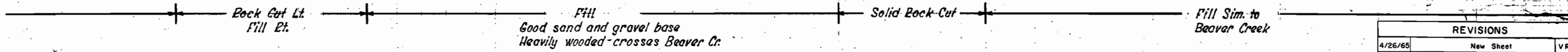
Utility poles within Right of Way to be removed by Owner.

Clearing & Grubbing consists of Grass, Light Sagebrush, Cottonwood, and Willows.

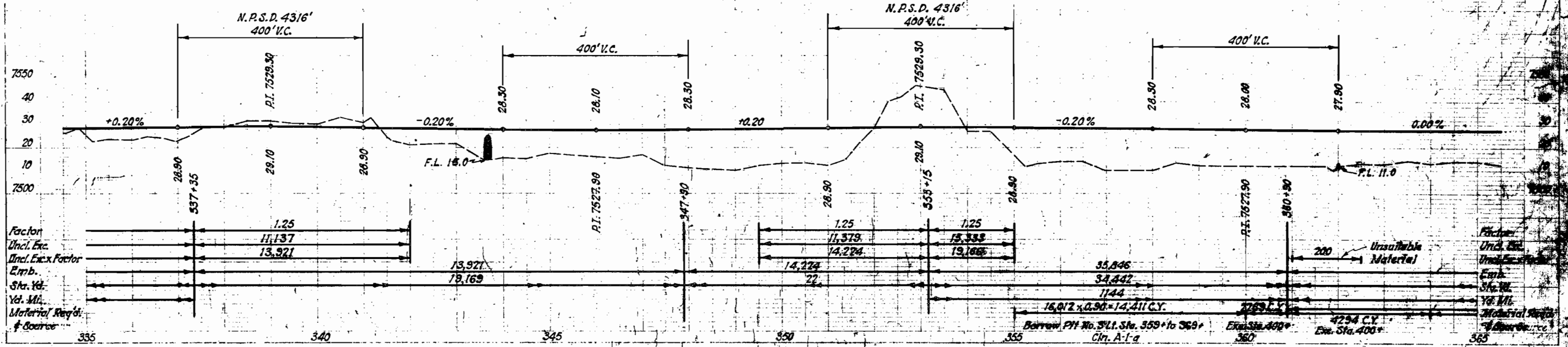
Borrow Pit No. 3
Sta. 359± to 369±
Mat. is mostly clean sand & gravel partially wet with an P value of 75+. Some silty A-4 overburden with a C.B.R. of +12.0.
Quantity Available 75,000 Cu. Yds.

Approx. Limits of Unsuitable Mat. to be Dem. & Wasted as directed by the Engineer.

B.M. - U.S.B.R. - 7514.96
E. End Culv.
200' Lt. Sta. 363+40



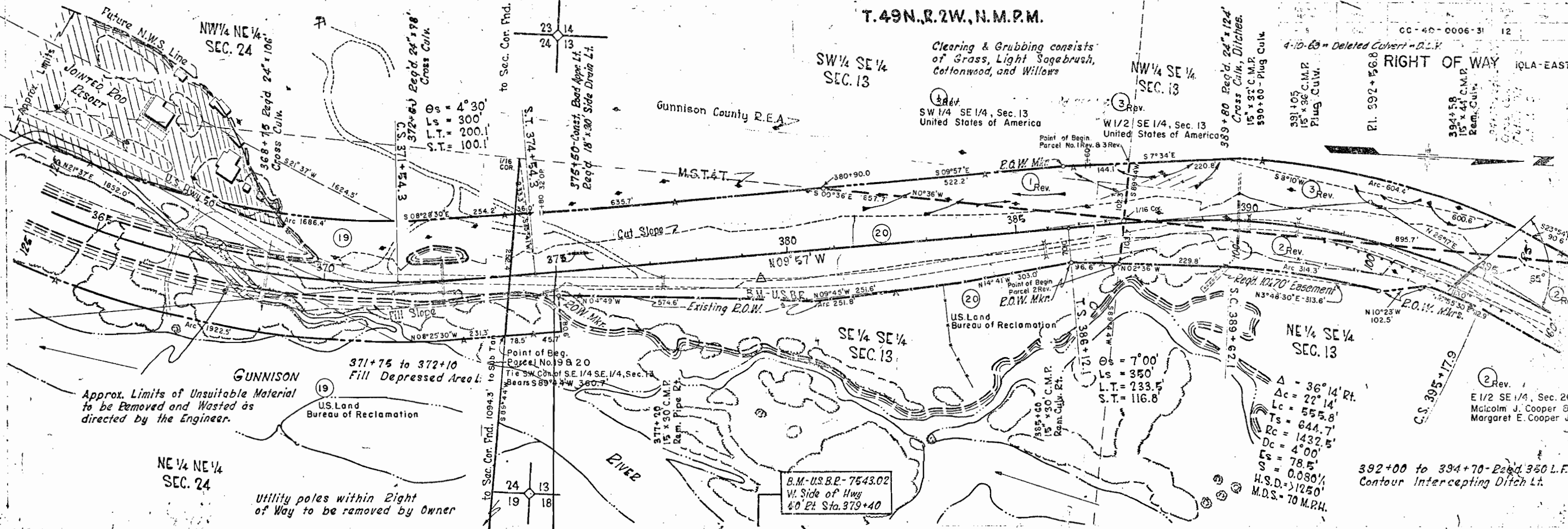
REVISIONS		
4/26/65	New Sheet	VR



PROFILE

Factor Incl. Exc.
Incl. Exc. Factor Emb.
Sta. Yd.
Vol. Mat.
Material Req'd. @ Source

Factor Incl. Exc.
Incl. Exc. Factor Emb.
Sta. Yd.
Vol. Mat.
Material Req'd. @ Source



Approx. Limits of Unsuitable Material to be Removed and Wasted as directed by the Engineer.

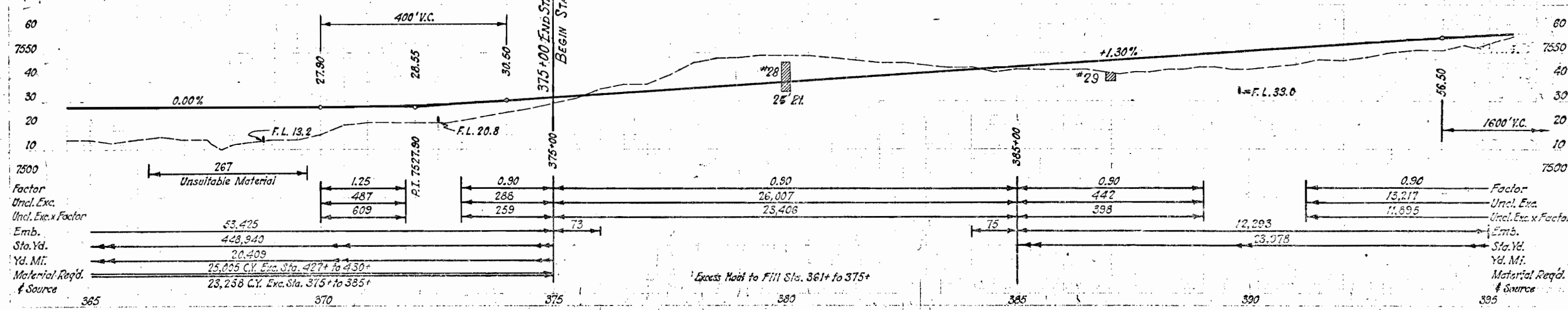
Utility poles within Right of Way to be removed by Owner

Fill Pond 25' Lt. will require filling with good rock and gravel.

*28 (0.0-120)
A-4(8)
LL-25
P.I.-5
% 200-76
C.B.E.-4.4

*29 (0.0-30)
A-4(8)
Sim. to *28
C.B.E.-4.4

REVISIONS		
4/26/65	New Sheet	VR
8/18/67	Added Access	EJM

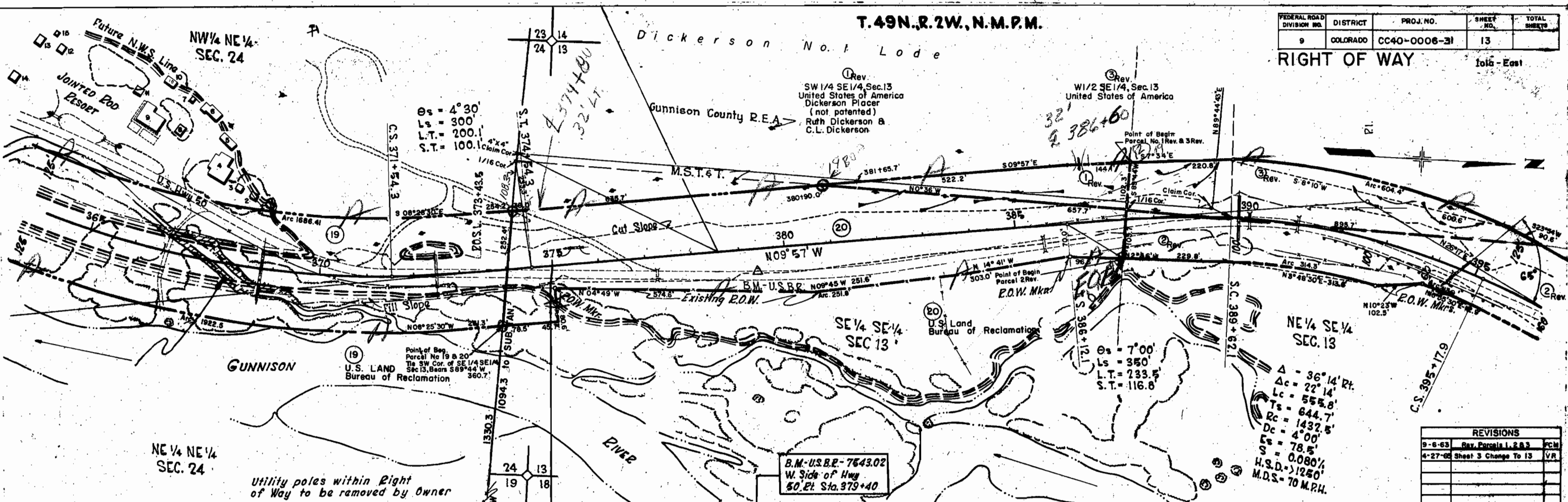


Excess Mat to Fill Sta. 361+ to 375+

T. 49N., R. 2W., N.M.P.M.

FEDERAL ROAD DIVISION NO.	DISTRICT	PROJ. NO.	SHEET NO.	TOTAL SHEETS
9	COLORADO	CC40-0006-31	13	

RIGHT OF WAY 1016 - East



NE 1/4 NE 1/4 SEC. 24

Utility poles within Right of Way to be removed by Owner

B.M.-U.S.B.R.-7543.02
W. Side of Hwy
50' Et. Sta. 379+40

NE 1/4 SE 1/4 SEC. 13

$\Delta = 36^{\circ}14' R.$
 $Lc = 22^{\circ}14'$
 $Ts = 555.8'$
 $Rc = 644.7'$
 $Dc = 1432.5'$
 $S = 4^{\circ}00'$
 $Es = 78.5'$
 $H.S.D. = 1250'$
 $M.D.S. = 70 M.P.H.$

REVISIONS		
9-6-63	Rev. Parcels 1, 2 & 3	FCM
4-27-66	Sheet 3 Change To 13	VR

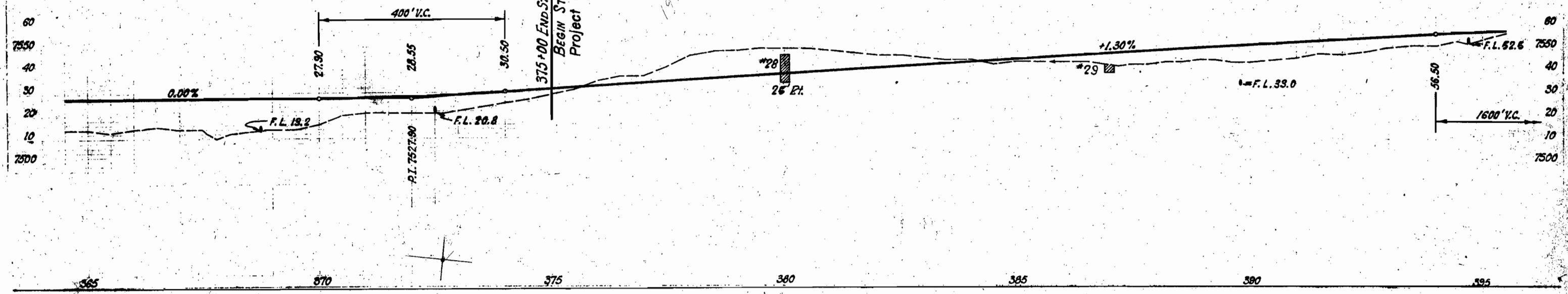
NOTE-PROPERTY TABULATION

- 1 - Log Cabin, tar paper roof
- 2 - Log Cabin, dirt roof
- 3 - Log Cabin, dirt roof
- 4 - Log Cabin, tar paper and dirt roof
- 5 - Old Log Shed, storage
- 6 - Old Shed and garage
- 7 - Outside Toilets
- 8 - Log Cabin, not modern-roll roofing
- 9 - Log House - basement
- 10 - Chicken house, log
- 11 - Shed type garage
- 12 -
- 13 - Cabins, foundations doubtful - no concrete
- 14 - Not modern
- 15 - Outside Toilets

Notes: SE 1/4 SE 1/4 Sec. 13 to be purchased by U.S.B.R.

E 1/2 SE 1/4, Sec. 13
Malcolm J. Cooper &
Margaret E. Cooper J.T.

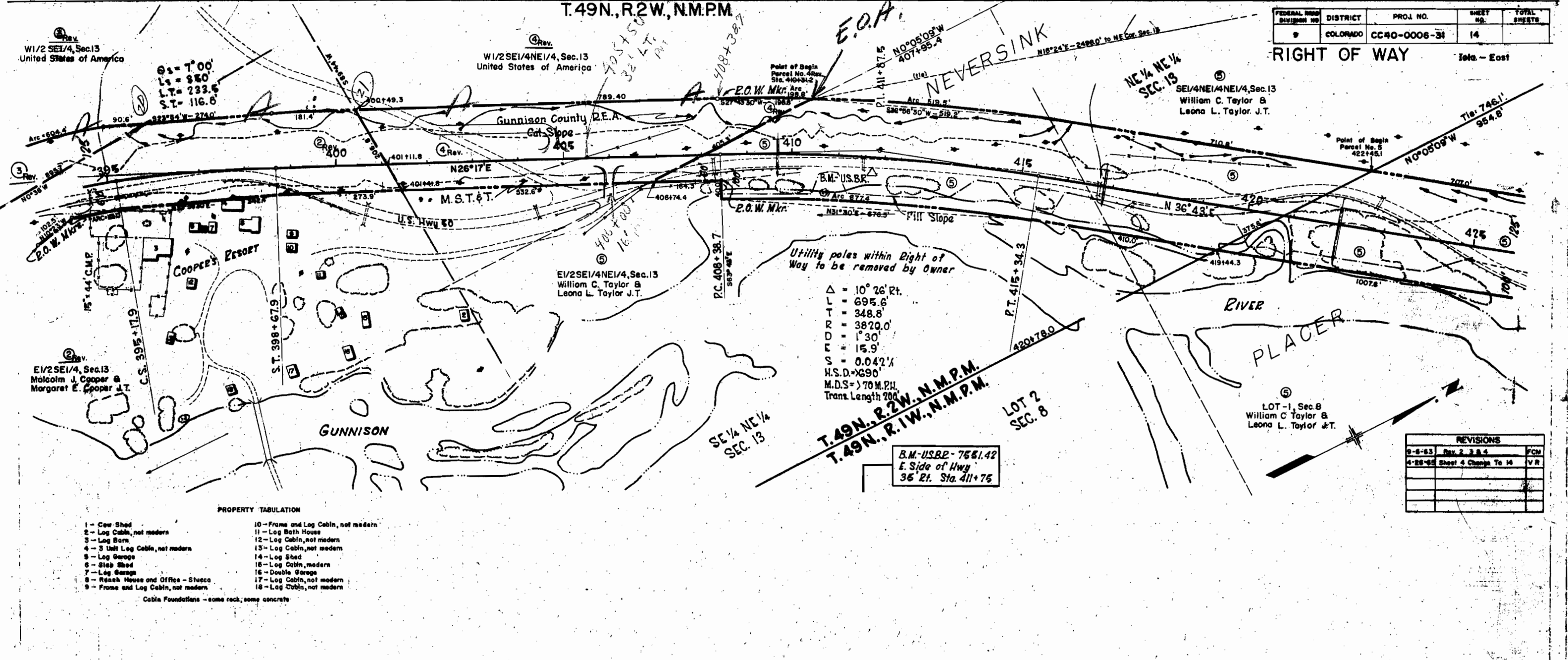
375+00 END STATE & U.S.B.R. PARTICIPATION
BEGIN STATE CONSTRUCTION
Project CC 40-0006-31



T.49N.,R.2W.,N.M.P.M.

FEDERAL ROAD DIVISION NO.	DISTRICT	PROJ. NO.	SHEET NO.	TOTAL SHEETS
9	COLORADO	CC40-0006-31	14	

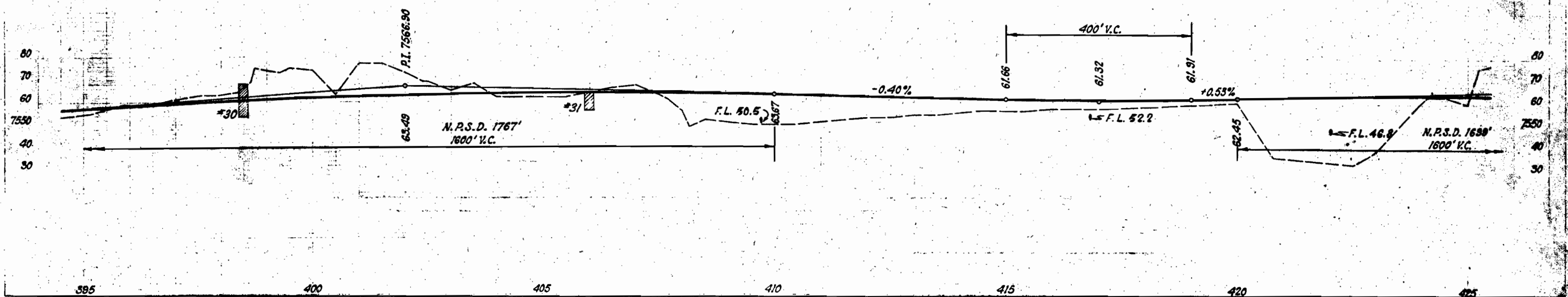
RIGHT OF WAY Total - East



PROPERTY TABULATION

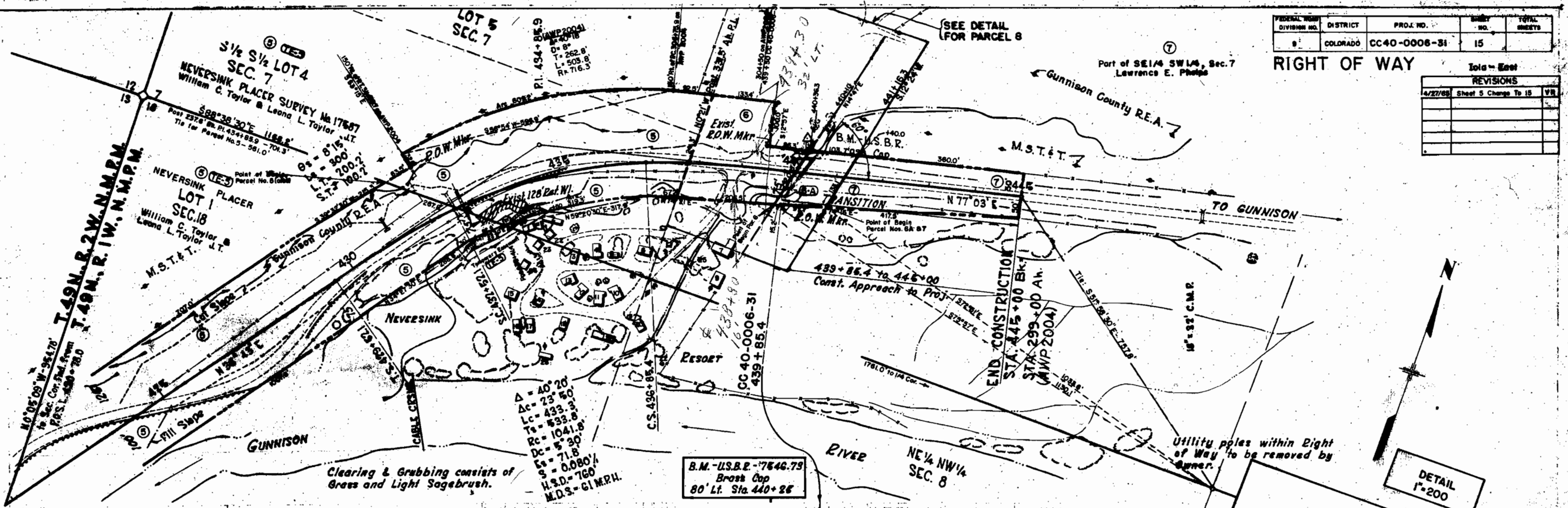
- 1 - Cow Shed
 - 2 - Log Cabin, not modern
 - 3 - Log Barn
 - 4 - 3 Unit Log Cabin, not modern
 - 5 - Log Garage
 - 6 - Slab Shed
 - 7 - Log Garage
 - 8 - Reseal House and Office - Stucco
 - 9 - Frame and Log Cabin, not modern
 - 10 - Frame and Log Cabin, not modern
 - 11 - Log Bath House
 - 12 - Log Cabin, not modern
 - 13 - Log Cabin, not modern
 - 14 - Log Shed
 - 15 - Log Cabin, modern
 - 16 - Double Garage
 - 17 - Log Cabin, not modern
 - 18 - Log Cabin, not modern
- Cabin Foundations - some rock, some concrete

REVISIONS		
9-6-63	Rev. 2, 3 & 4	FCM
4-28-65	Sheet 4 Change To 14	V.R.



FEDERAL ROAD DIVISION NO.	DISTRICT	PROJ. NO.	SHEET NO.	TOTAL SHEETS
8	COLORADO	CC40-0006-31	15	

REVISIONS		
DATE	DESCRIPTION	BY
4/27/68	Sheet 5 Change To 15	VR



Clearing & Grubbing consists of
Brush and Light Sagebrush.

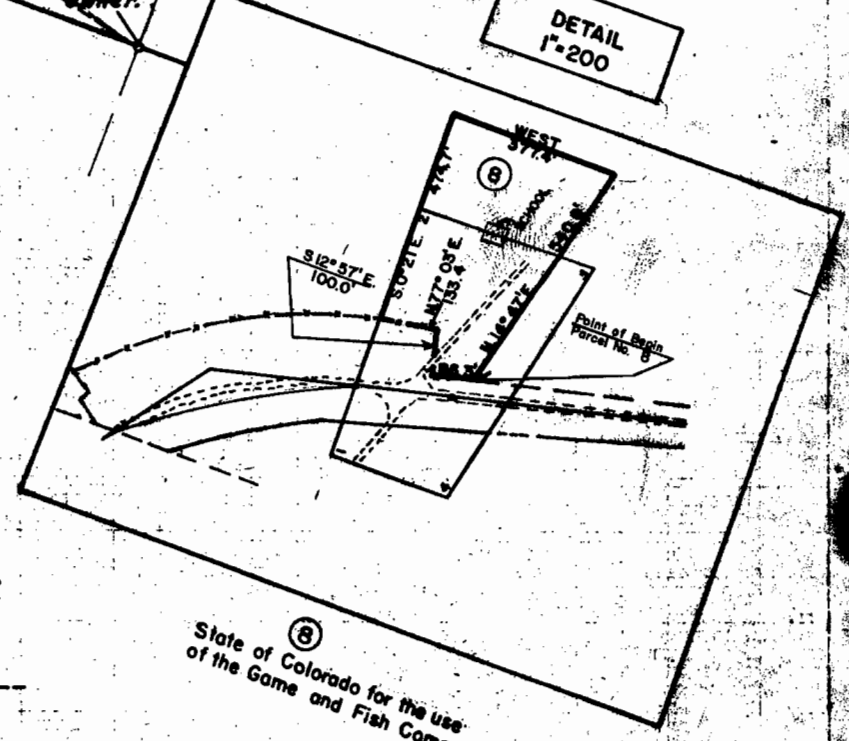
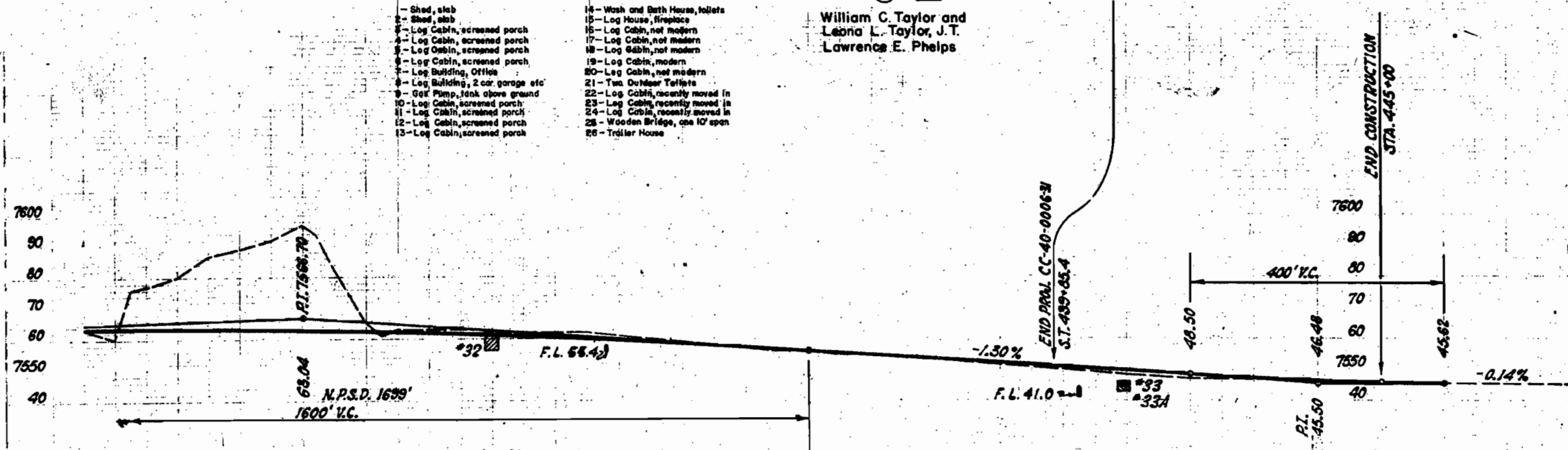
$\Delta = 40' 20''$
 $\Delta c = 23' 50''$
 $Lc = 433.3'$
 $Ts = 533.8'$
 $Rc = 1041.8'$
 $S = 5' 30''$
 $S = 0.080\%$
 $H.S.D. = 760'$
 $M.D.S. = 61 M.P.H.$

B.M. - U.S.B.R. - 7546.75
 Brass Cap
 80' Lt. Sta. 440+28'

PROPERTY TABULATION

- 1 - Shed, slab
- 2 - Shed, slab
- 3 - Log Cabin, screened porch
- 4 - Log Cabin, screened porch
- 5 - Log Cabin, screened porch
- 6 - Log Cabin, screened porch
- 7 - Log Building, Office
- 8 - Log Building, 2 car garage etc
- 9 - Gas Pump, tank above ground
- 10 - Log Cabin, screened porch
- 11 - Log Cabin, screened porch
- 12 - Log Cabin, screened porch
- 13 - Log Cabin, screened porch
- 14 - Wash and Bath House, toilets
- 15 - Log House, fireplace
- 16 - Log Cabin, not modern
- 17 - Log Cabin, not modern
- 18 - Log Cabin, not modern
- 19 - Log Cabin, modern
- 20 - Log Cabin, not modern
- 21 - Two Outdoor Toilets
- 22 - Log Cabin, recently moved in
- 23 - Log Cabin, recently moved in
- 24 - Log Cabin, recently moved in
- 25 - Wooden Bridge, one 10' span
- 26 - Trailer House

6 6A
 William C. Taylor and
 Leona L. Taylor, J.T.
 Lawrence E. Phelps



State of Colorado for the use
 of the Game and Fish Commission.

COLORADO DEPARTMENT OF HIGHWAYS

PROJECT CC40-0006 31

R.O.W. OWNERSHIP MAP

GUNNISON COUNTY

T49N, R2W & T49N, R1W, NMPM

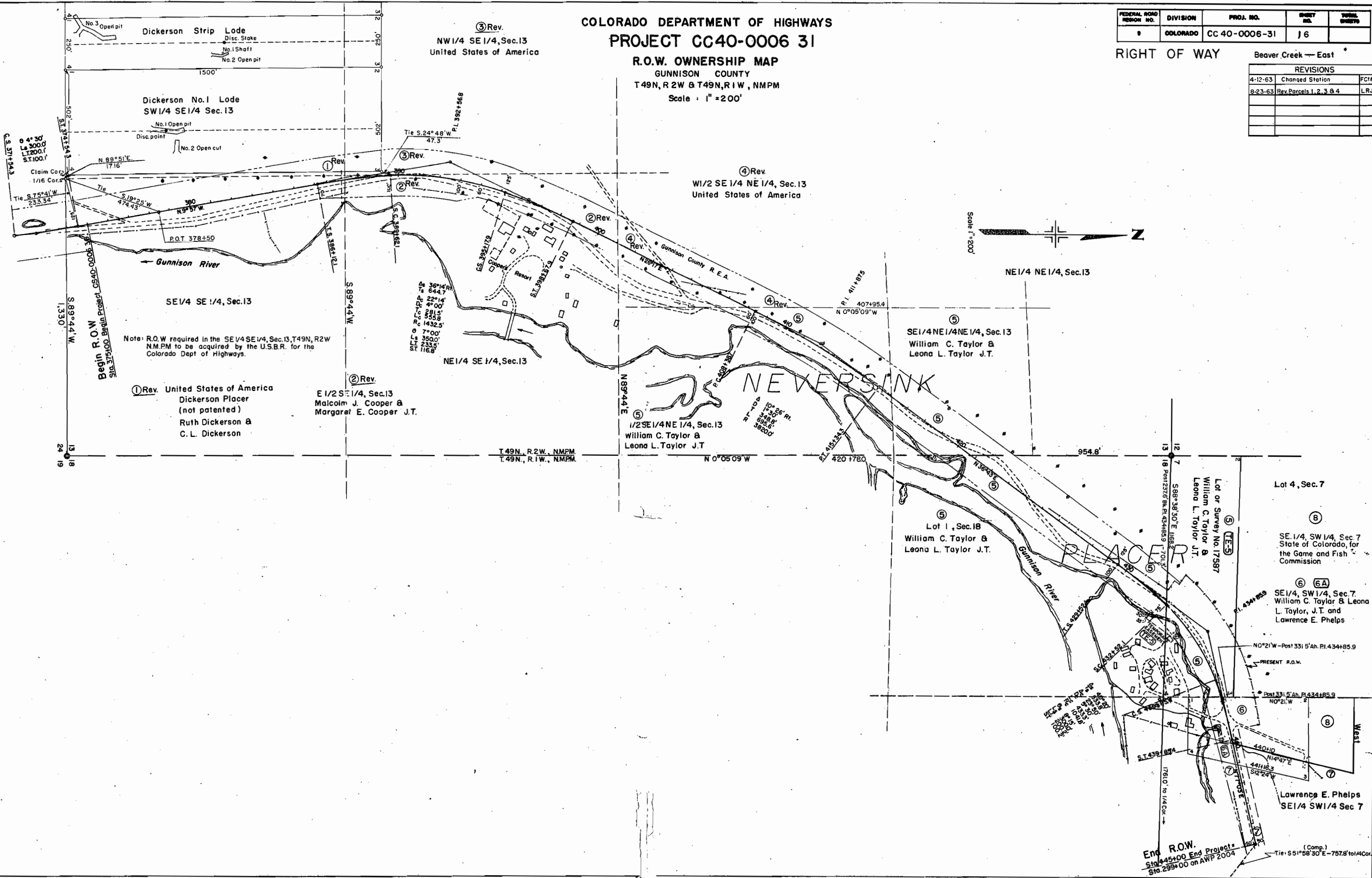
Scale: 1" = 200'

FEDERAL ROAD DESIGN NO.	DIVISION	PROJ. NO.	SHEET NO.	TOTAL SHEETS
0	COLORADO	CC 40-0006-31	16	

RIGHT OF WAY

Beaver Creek — East

REVISIONS		
4-12-63	Changed Station	FCM
8-23-63	Rev. Parcels 1, 2, 3 & 4	LRJ



Note: R.O.W required in the SE 1/4 SE 1/4, Sec. 13, T49N, R2W N.M.P.M to be acquired by the U.S.B.R. for the Colorado Dept. of Highways.

① Rev. United States of America
Dickerson Placer
(not patented)
Ruth Dickerson &
C. L. Dickerson

② Rev. E 1/2 SE 1/4, Sec. 13
Malcolm J. Cooper &
Margaret E. Cooper J.T.

⑤ 1/2 SE 1/4 NE 1/4, Sec. 13
William C. Taylor &
Leona L. Taylor J.T.

⑤ SE 1/4 NE 1/4 NE 1/4, Sec. 13
William C. Taylor &
Leona L. Taylor J.T.

⑤ Lot 1, Sec. 18
William C. Taylor &
Leona L. Taylor J.T.

⑤ Lot or Survey No. 17587
William C. Taylor &
Leona L. Taylor J.T.

⑧ Lot 4, Sec. 7

⑧ SE 1/4, SW 1/4, Sec. 7
State of Colorado, for
the Game and Fish
Commission

⑥ ⑥A SE 1/4, SW 1/4, Sec. 7
William C. Taylor & Leona
L. Taylor, J.T. and
Lawrence E. Phelps

⑦ Lawrence E. Phelps
SE 1/4 SW 1/4 Sec 7

End R.O.W.
Sta. 445+00 End Project
Sta. 299+00 on AWP 2004

(Comp.)
Tie: S51°58'30"E - 757.8' to 1/4 Cor.