

District File

COLORADO DEPARTMENT OF HIGHWAYS

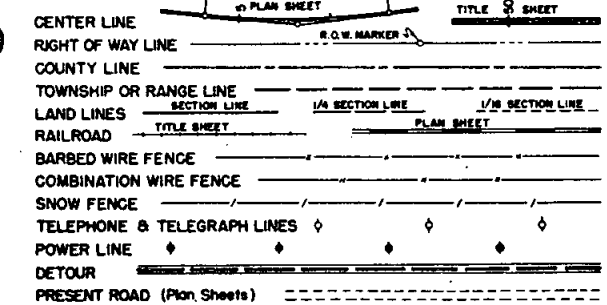
PLAN AND PROFILE OF PROPOSED **CC 61-0091-19**
FEDERAL AID PROJECT NO. ~~CT 61-0091-17~~
 STATE HIGHWAY NO. 91
 SUMMIT COUNTY

REVISIONS		
6-21-63	Changed Project Number	LRJ
7-10-63	Rev End R.O.W. Sta.-Add Sh. 8	DJF
10-26-64	New Proj. & Rev. Index	FCM

FEDERAL ROAD REGION NO.	DIVISION	PROJ. NO.	SHEET NO.	TOTAL SHEETS
9	COLORADO	CT 61-0091-17 C.C. 61-0091-19	1	3

RIGHT OF WAY
CLIMAX-KOKOMO (RECEN)

CONVENTIONAL SIGNS



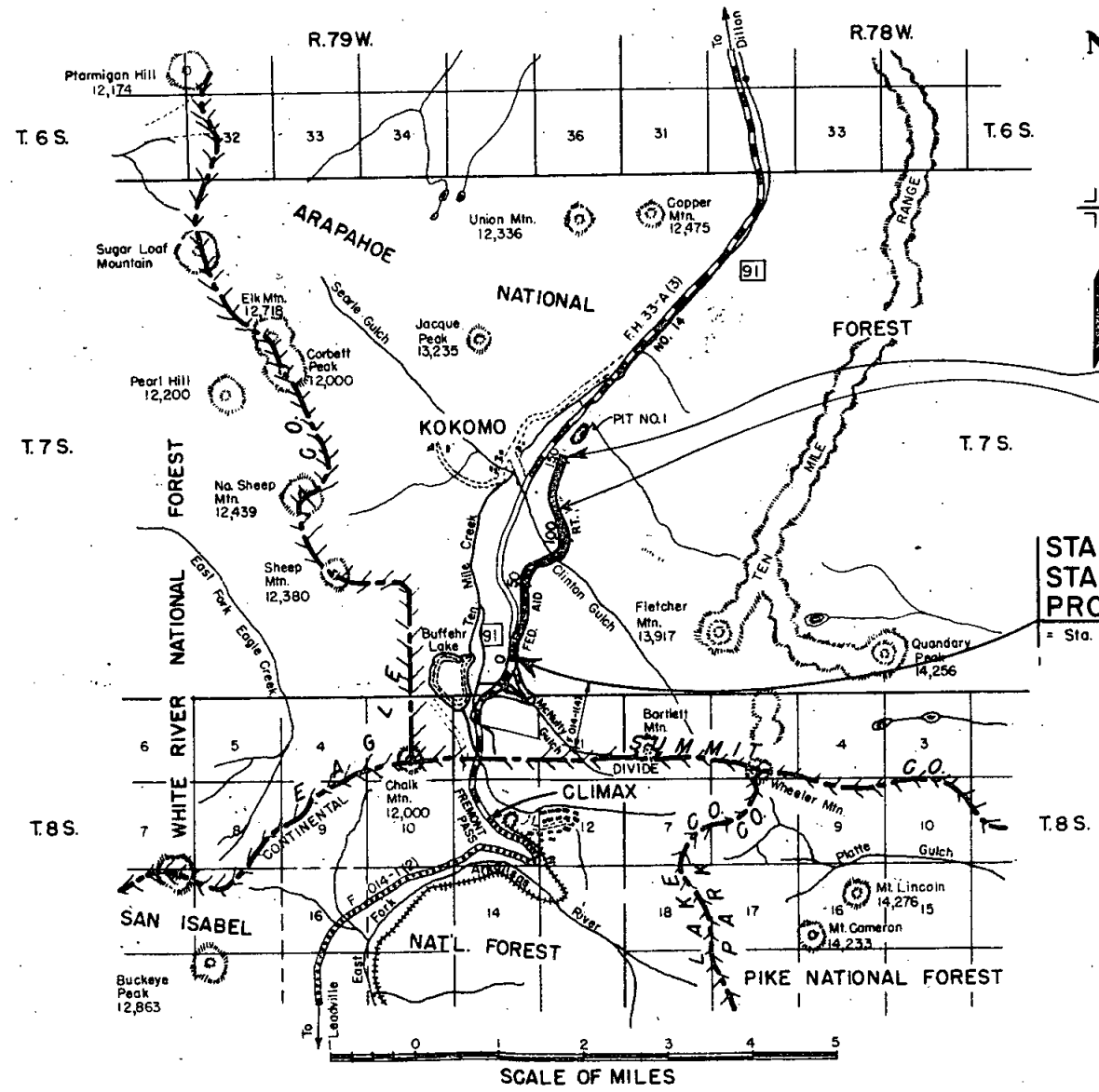
INDEX OF SHEETS
 SHEET NO. 1 TITLE SHEET
 2 TABULATION OF PROPERTIES
 3-7 PLAN AND PROFILE SHEETS
 8 OWNERSHIP MAPS

SCALES OF ORIGINAL DRAWINGS

ON PLAN. 1 IN. = 100 FT.
 ON PROFILE. 1 IN. = 100 FT. HORIZONTAL
 1 IN. = 10 FT. VERTICAL
 GRADE LINE ON PROFILE IS SHOWN AS GRADE OF FINISHED ROAD
 GROSS LENGTH OF PROJECT 15,233.4 Feet = 2.885 Miles - R.O.W.
 NET LENGTH OF PROJECT 11,700.0 Feet = 2.216 Miles - Construction

NOTE:
NEW PROJECT FIELD REALIGNMENT

RIGHT OF WAY



STA. P.O.C. 126 + 99.5 ENDR.O.W.
PROJECT CC 61-0091-19

STA. 117+00.0 END CONST.
PROJECT CC 61-0091-19

STA. -1+00 BEGIN R.O.W.
STA. 0+00 BEGIN CONST.
PROJECT CC 61-0091-19

= Sta. 154+00.0 on Proj. F 014-1(4)

R. O. W. TABULATION OF PROPERTIES IN

SUMMIT

COUNTY S.H.No. 91

PROJ. ~~CT 61-0091-17~~
CC 61-0091-19

FEDERAL ROAD DIVISION NO.	DISTRICT	PROJECT NO.	SHEET NO.
9	COLORADO	CT 61-0091-17 CC 61-0091-19	2

RIGHT OF WAY CLIMAX - KOKOMO (RECEN)

PARCEL NO.	OWNER	ADDRESS	LOCATION	AREA IN ACRES			PURCHASE DATA					REMARKS	NO.
				PARCEL	TO BE ACQUIRED	REMAINDER	LAND	IMPROV'M'TS	DAMAGE	MISC.	TOTAL		
			T. 7 S., R. 79 W.										
1	AMERICAN METAL CLIMAX INC.	CLIMAX, COLO.		0.932	0.179								
2	AMERICAN METAL CLIMAX, INC.	CLIMAX, COLO.	DRIFT PLACER	8.554	5.974								
3	U. S. LAND			13.753	13.753								
4	AMERICAN METAL CLIMAX, INC.	CLIMAX, COLO.	GOLD HILL PLACER	18.900	18.900								
5 Rev.	AMERICAN METAL CLIMAX, INC.	CLIMAX, COLO.	ARGENTA LODE	0.6	0.6								
5A	AMERICAN METAL CLIMAX, INC.	CLIMAX, COLO.	DAUNTLESS LODE	0.85	0.85								
6	AMERICAN METAL CLIMAX, INC.	CLIMAX, COLO.	MC KINLEY PLACER	11.602	11.602								
7	AMERICAN METAL CLIMAX, INC.	CLIMAX, COLO.	FEDERATION PLACER	4.976	4.976								
8 Rev ²	AMERICAN METAL CLIMAX INC.	CLIMAX, COLO.	CLINTON PLACER	6.672	6.672								
9 Rev ²	AMERICAN METAL CLIMAX, INC.	CLIMAX, COLO.	VERNON PLACER	1.353	1.353								
10 Rev ³	U. S. LAND			10.742	10.742								

REVISIONS		
6-21-63	Changed Project Number	LRJ
7-15-63	Revised Parcels B & D	DJF
8-25-64	Revised Parcel 9	FCM
10-26-64	New Proj.	FCM
11-25-64	Rev. 5 B Added 5A	FCM
11-25-64	Name Changed on Pw 188	Rev 2 FCM

CONGRUOUS DEPARTMENT OF HIGHWAYS
 STATE OF COLORADO
 APRIL 1963

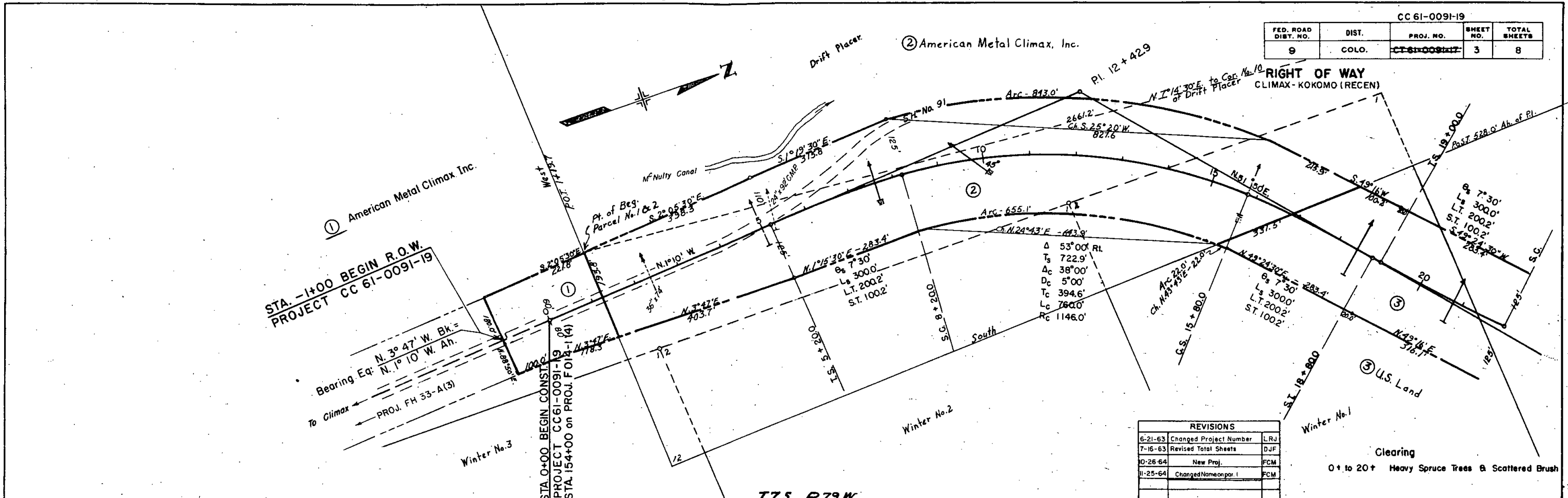
DATE: _____
 DRAWN BY: _____
 CHECKED BY: _____
 NOTE BOOK ALIGNMENT CHECKED
 NO. 22,222 RT. OF WAY CHECKED

DATE: _____
 DRAWN BY: _____
 CHECKED BY: _____
 NOTE BOOK GRADES CHECKED
 NO. 22,222 ST. MARKS, NOTED BY CH 40

CC 61-0091-19

FED. ROAD DIST. NO.	DIST.	PROJ. NO.	SHEET NO.	TOTAL SHEETS
9	COLO.	CC 61-0091-19	3	8

RIGHT OF WAY
 CLIMAX-KOKOMO (RECEN)



REVISIONS		
6-21-63	Changed Project Number	LRJ
7-16-63	Revised Total Sheets	DJF
10-26-64	New Proj.	FCM
11-25-64	Changed Name on par. 1	FCM

Clearing
 0+ to 20+ Heavy Spruce Trees & Scattered Brush

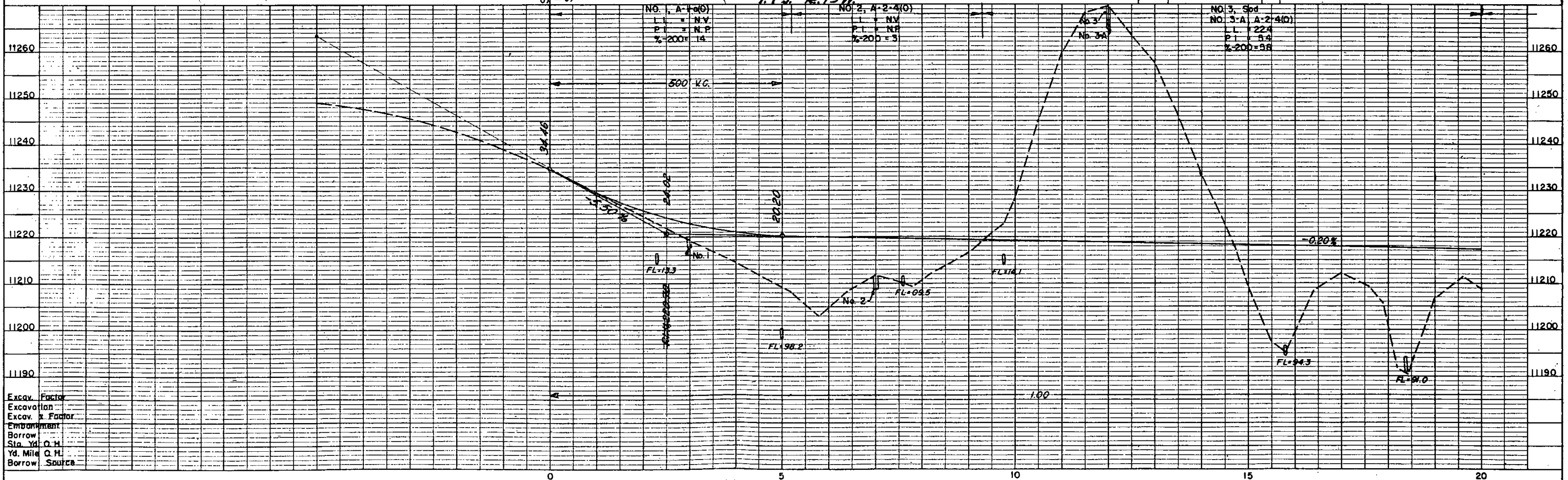
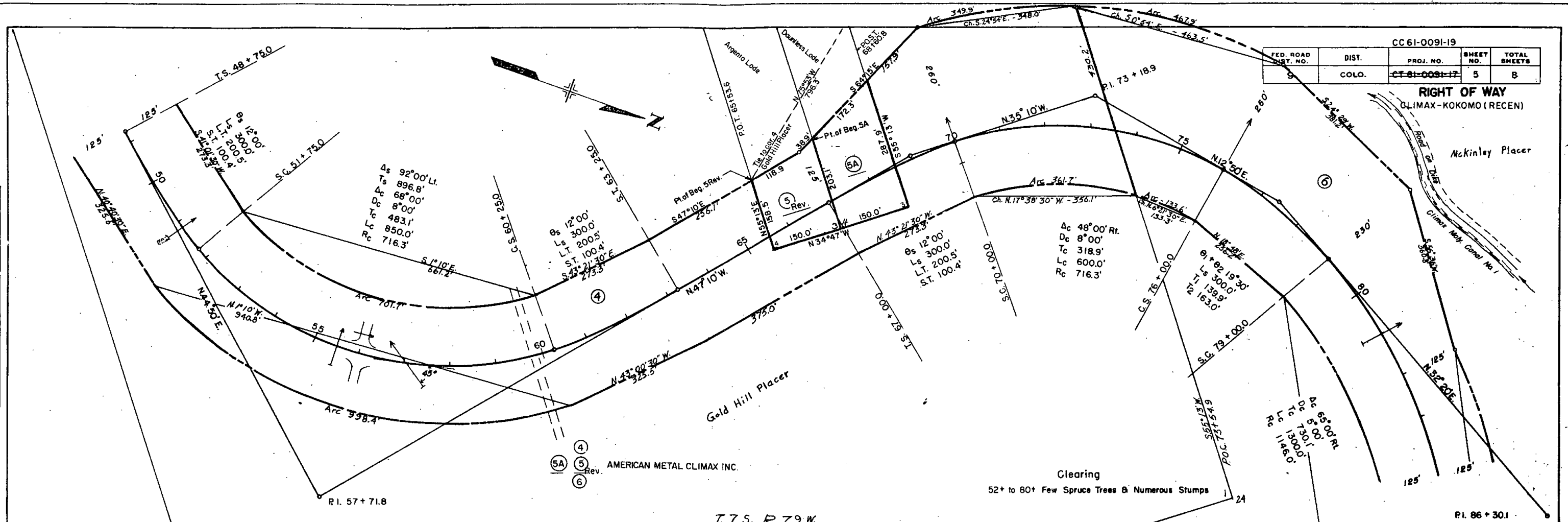


PLATE 1 - PLAN-PROFILE O.P.R. & A.E. STANDARD
 KEUPEL & BESSER CO., NEW YORK
 K & E CO. NO. 346-10

CONRAD DEPARTMENT OF HIGHWAYS
 P.P. 2-20-34
 April 1960

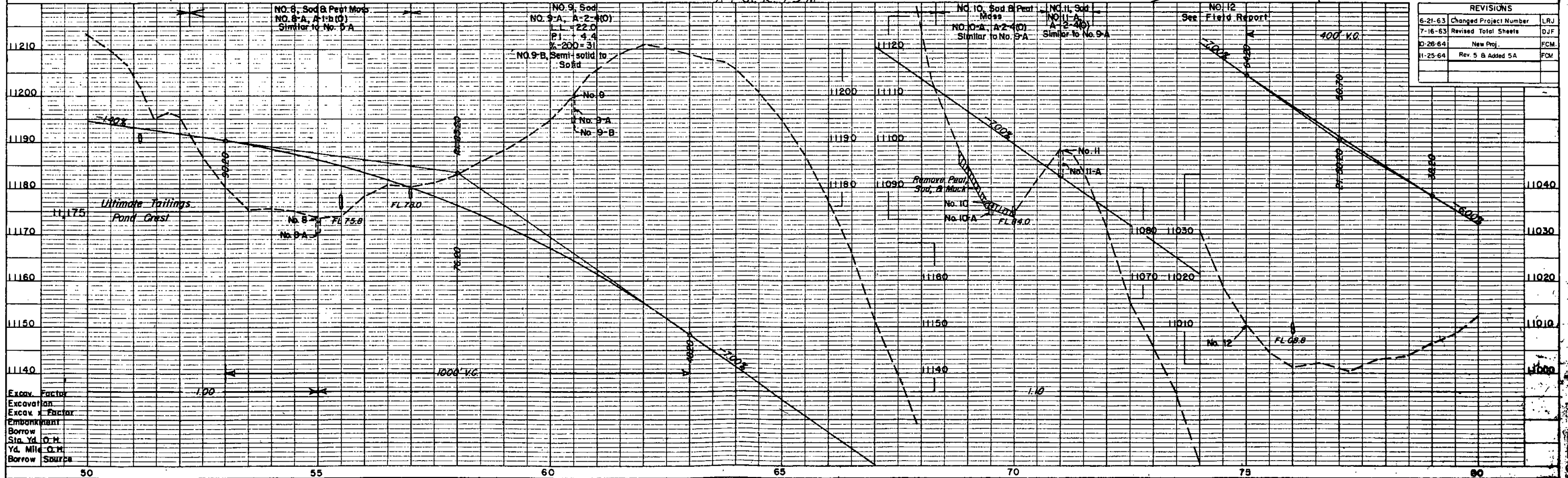
NOTED
 CHECKED
 NOTE BOOK ALIGNMENT CHECKED
 NO. 2-2-52
 STRUCTURE NOTATION CHECKED

NOTED
 CHECKED
 NOTE BOOK DIMENSIONS CHECKED
 NO. 2-2-52
 STRUCTURE NOTATION CHECKED



CC61-0091-19			
FED. ROAD DIST. NO.	DIST.	PROJ. NO.	SHEET NO.
9	COLO.	CT 61-0091-17	5
		TOTAL SHEETS	8

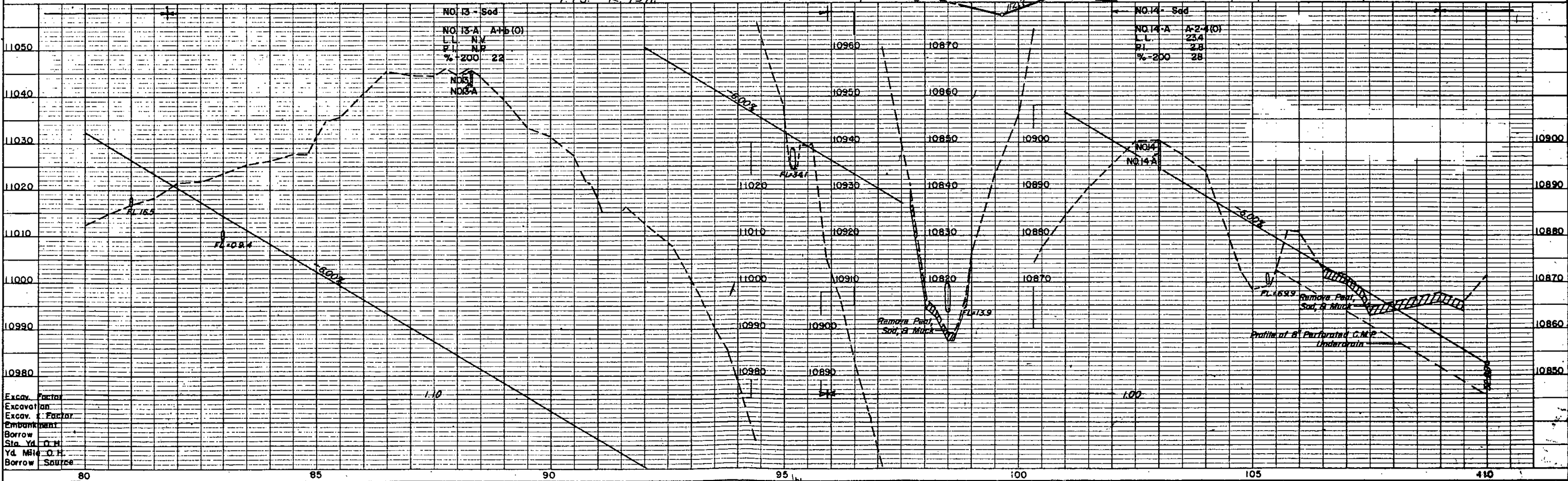
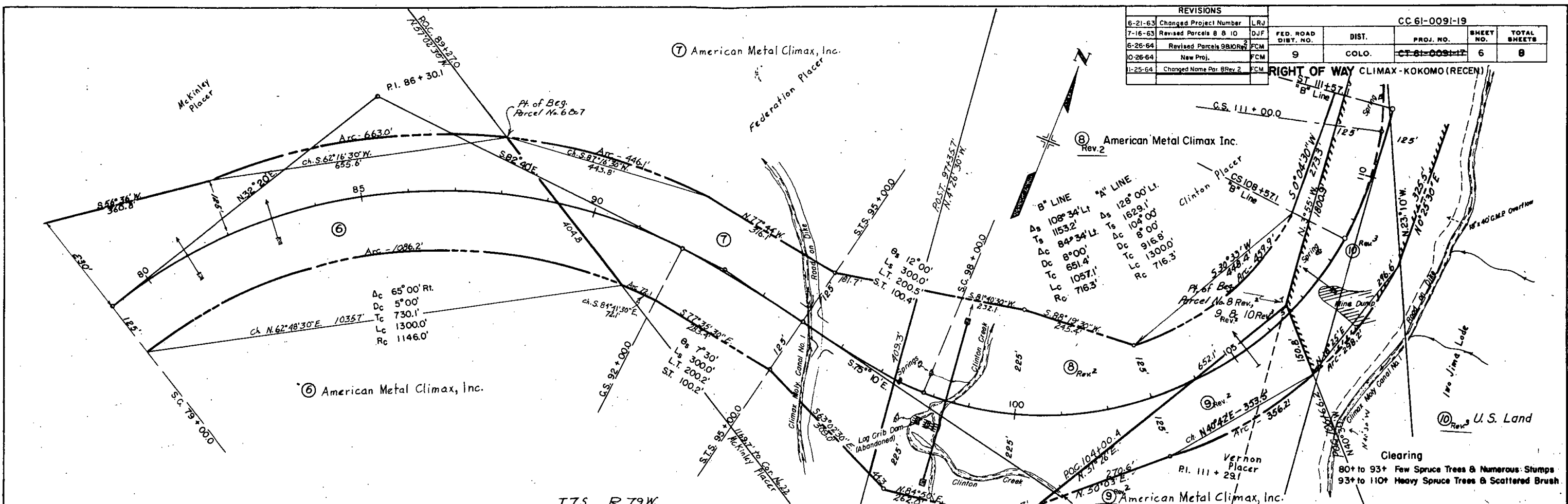
RIGHT OF WAY
 CLIMAX-KOKOMO (RECEN)



REVISIONS	
6-21-63	Changed Project Number LRJ
7-16-63	Revised Total Sheets DJF
10-26-64	New Proj. FCM
11-25-64	Rev. 5 & Added 5A FCM

REVISIONS				CC 61-0091-19			
6-21-63	Changed Project Number	LRJ	FED. ROAD DIST. NO.	DIST.	PROJ. NO.	SHEET NO.	TOTAL SHEETS
7-16-63	Revised Parcels 8 & 10	DJF	9	COLO.	CT-61-0091-19	6	8
6-26-64	Revised Parcels 9&10 Rev. 2	FCM					
10-26-64	New Proj.	FCM					
1-25-64	Changed Name Par. 8 Rev. 2	FCM					

RIGHT OF WAY CLIMAX-KOKOMO (RECEN)



DESIGNED BY: [Name]
 CHECKED BY: [Name]
 DATE: [Date]

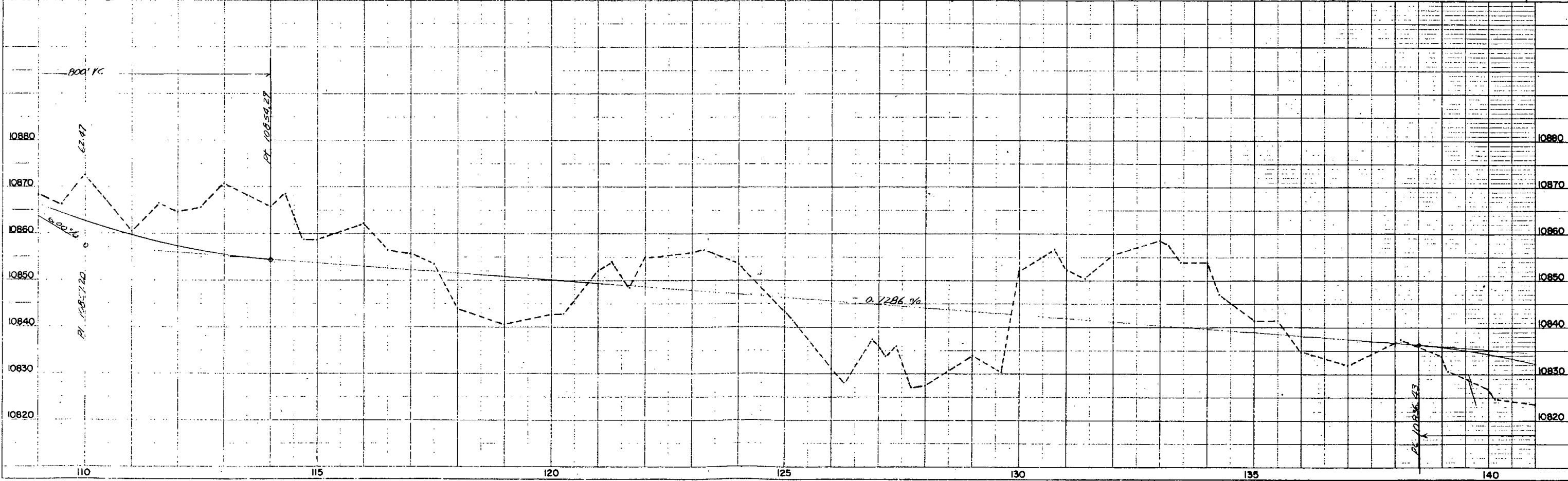
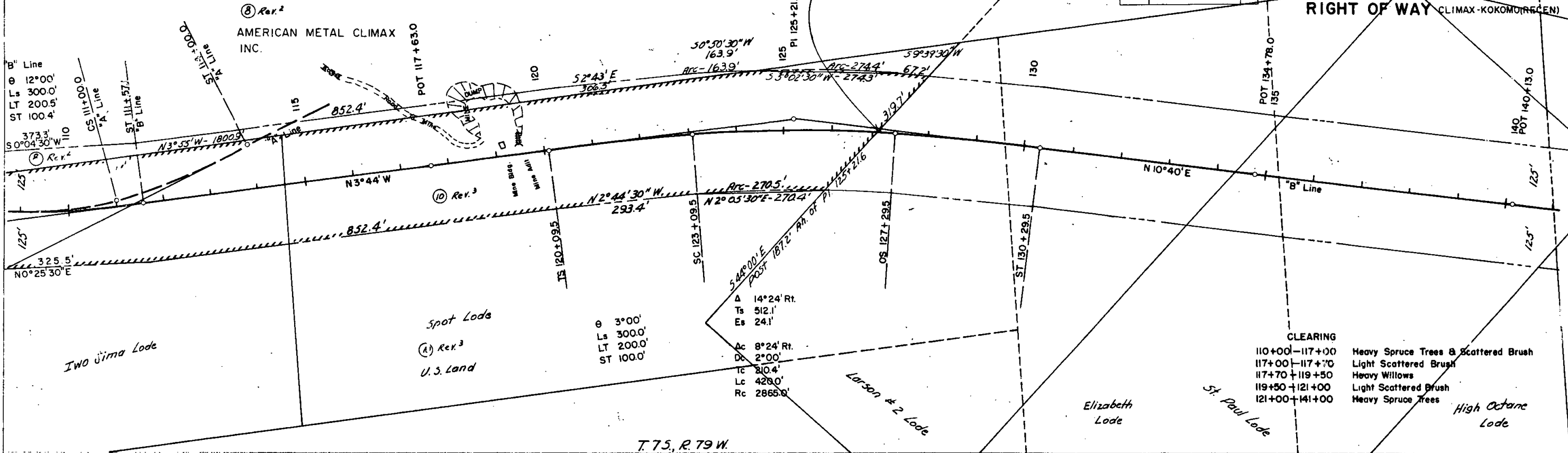
EXCAVATION
 EXCAV. FACTOR
 EMBANKMENT
 BORROW
 STA. Yd. O.H.
 Yd. M.H. O.H.
 BORROW SAUZE

STA. P.O.C. 126 + 99.5 END R.O.W.
 PROJ. CC 61-0091-19

REVISIONS		
0-26-64	New Proj.	FCM
1-18-65	Changed name Par 8 Rev 2	MC

FED. ROAD DIST. NO.	DIST.	PROJ. NO.	SHEET NO.	TOTAL SHEETS
9	COLO.	CC 61-0091-19	7	8

RIGHT OF WAY CLIMAX-KOKOMO (REGEN)



VERTICAL CURVE DATA
 GRADE 0.000%
 GRADE 0.1286%
 CURVE LENGTH 230'

COLORADO DEPARTMENT OF HIGHWAYS
PROJECT NO. CC 61-0091-19

R.O.W. OWNERSHIP MAP
SUMMIT COUNTY
T.7S., R.79W., 6th. P.M.
Scale: 1" = 400'

The McKinley Placer
14190

FEDERAL ROAD DIVISION NO.	DISTRICT	PROJ. NO.	SHEET NO.	TOTAL SHEETS
9	COLORADO	CC 61-0091-19	8	8

RIGHT OF WAY CLIMAX-KOKOMO(RECEN)

STA. P.O.C. 126+99.5 END R.O.W.
PROJECT CC 61-0091-19

The Federation Placer
11786

(8) American Metal Climax Inc.
Rev. 2

STA. -1+00 Begin R.O.W.
PROJECT CC 61-0091-19

Bearing Eq. N 3°47' W Bk. 2
N 1°10' W Ad.
Prof. FH 33-A(3)

(1) American Metal Climax Inc.

Winter No. 3
Winter No. 2
Winter No. 1

STA. 0+00 Begin PROJECT CC 61-0091-19
STA 154+00 on F014-1(I)

(3) U.S. Land

Gold Hill Placer
1516

(5A) American Metal Climax, Inc.
Rev. 2

Dauntless Lode 1522
Argenta Lode 1520

Vernon Placer
20660

(9) American Metal Climax, Inc.
Rev. 2

(10) U.S. Land
Rev. 3

REVISIONS			
10-26-64	New Proj.	FCM	A 14°24' RT. Ts 512.1'
11-25-64	Rev. 5 & Added 5A	FCM	Ac 8°24' RT. Dc 2°00'
11-25-64	Changed Names on 1 & 8 Rev. 2	FCM	Lc 420.0' Re 2885.0' Os 3°00' Ls 300'

