

# FEDERAL WORKS AGENCY PUBLIC ROADS ADMINISTRATION

## AS CONSTRUCTED PROJECT 29-L ROUTE 29 BOULDER-IDAHO SPRINGS BOULDER VIA NEBERLAND & BLACKHAWK TO IDAHO SPRINGS 4.2 MILES CLASS 1 COLORADO FOREST HIGHWAY SYSTEM ROOSEVELT & ARAPAHO NATIONAL FORESTS BOULDER, GILPIN & CLEAR CREEK COUNTIES COLORADO

SHEET NO.	DESCRIPTION	STATION
14	Plan & Profile	300+92.429+11
15	Summary	
16	Plan & Profile	300+92.429+11
17	Standard Maintenance Posts	
18	Typical Signs for use on Construction	
19	Timber Guide Posts with Reflectors	
20	Concrete Arch Culvert	Sta. 399+00
21	Detail of Sighting	
22	Miscellaneous Structures	
23	Cross Sections	300+92.429+11



FEDERAL WORKS AGENCY  
PUBLIC ROADS ADMINISTRATION  
DIVISION NO. 3, DENVER, COLORADO

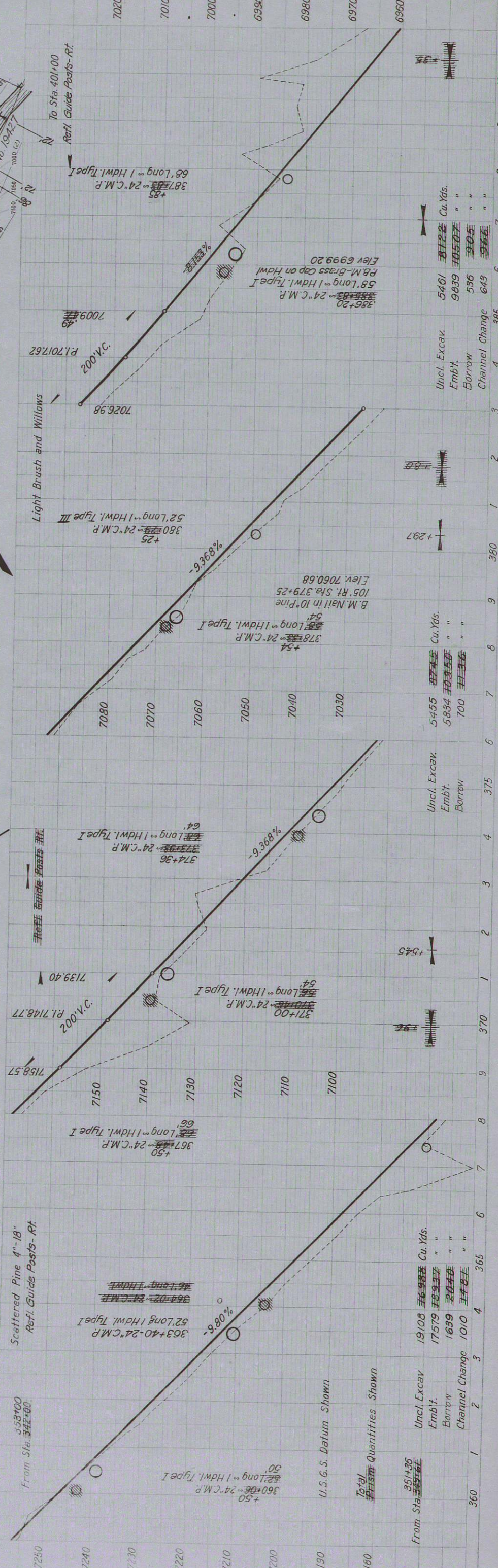
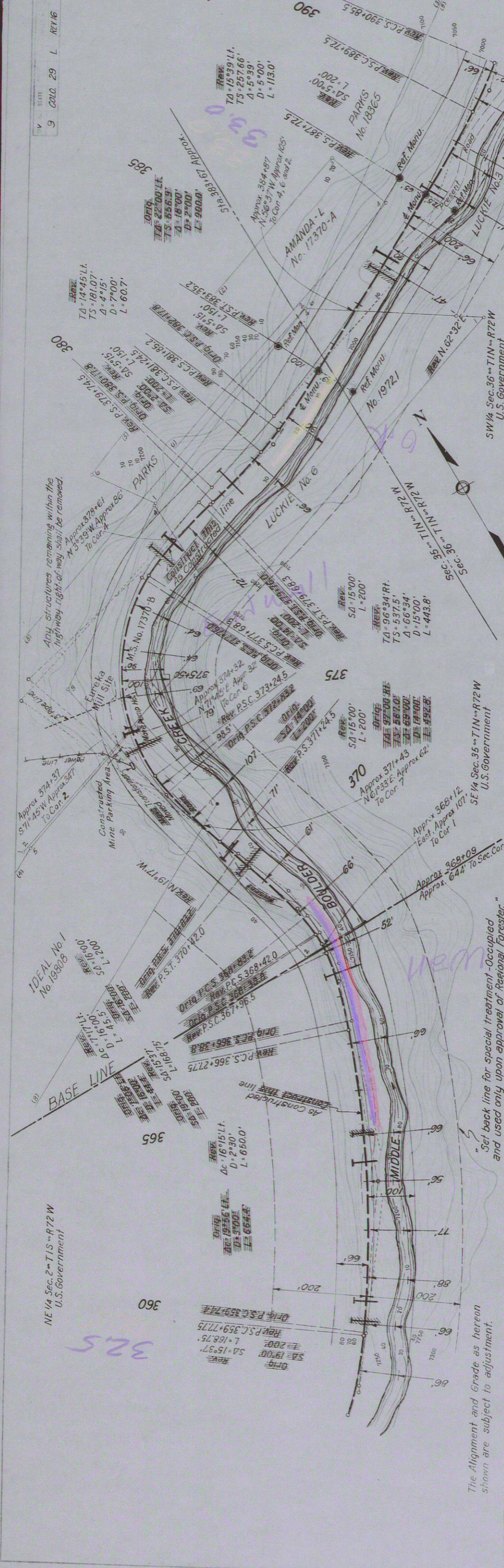
APPROVED BY DESIGN ENGINEER DATE 1932  
APPROVED BY DISTRICT ENGINEER DATE 1932  
APPROVED BY REGIONAL FORESTER DATE 1932  
APPROVED BY STATE HIGHWAY ENGINEER DATE 1932

\* Length includes tunnels, bridges and bar crossings.





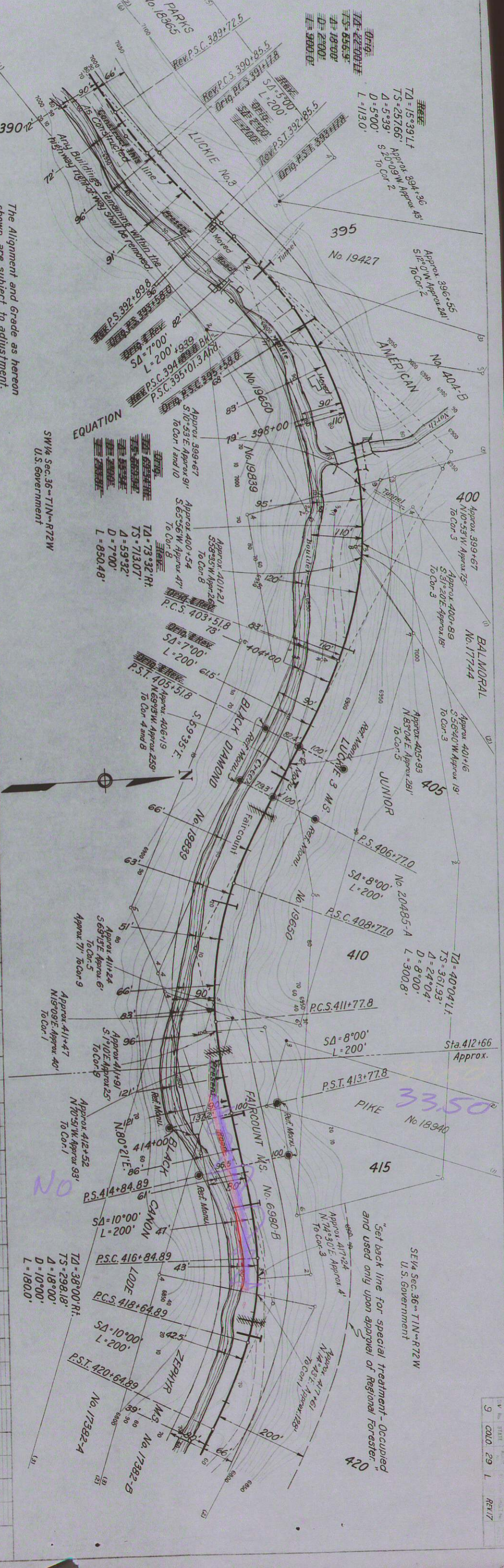
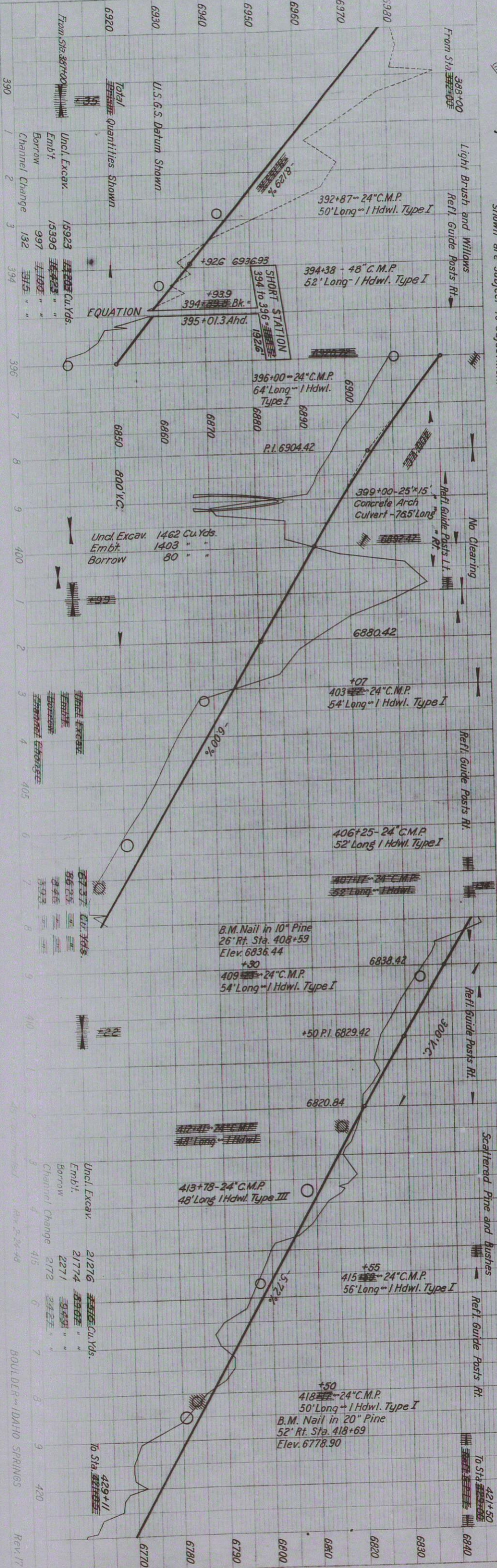




Station	From Sta. 360+00	From Sta. 342+00	U.S.G.S. Datum Shown	Total	Quantities Shown	Uncl. Excav Emb't.	Borrow	Channel Change	Cu. Yds.
360	521+36	17579	1639	1010	19108	17579	1639	1010	19108
365	5455	5834	700	5455	5834	700			
370	5455	5834	700	5455	5834	700			
375	5455	5834	700	5455	5834	700			
380	5461	9839	536	5461	9839	536			
385	5461	9839	536	5461	9839	536			
390	5461	9839	536	5461	9839	536			

PROFILE	A.O.S.	1944
NOTE BOOK	NO. 11-44	W.A.W.
Drawn & Traced	W.A.W.	11-44

PLAN	A.O.S.	1944
NOTE BOOK	NO. 11-44	W.A.W.
Drawn & Traced	W.A.W.	11-44



SE 1/4 Sec. 36 - T1N - R72W  
U.S. Government

"Set back line for special treatment - Occupied and used only upon approval of Regional Forester."

DATE	1944	A.O.S.
DRAWN & TRACED	M.A.W.	
SCALE	11-44	

