

FEDERAL ROAD DIVISION NO.	DISTRICT	PROJ. NO.	SHEET NO.	TOTAL SHEETS
1	COLORADO	CR 11-0002-24	1	

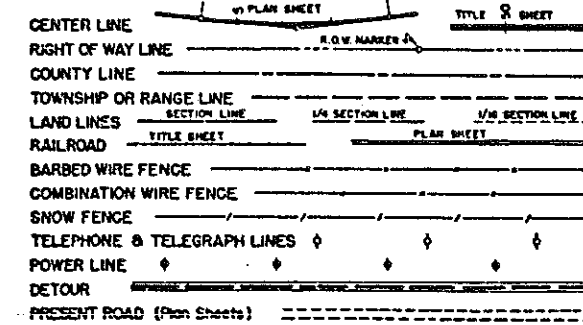
RIGHT OF WAY Rev. 10-30-56 S.W.Z. Proj. No. Change d

COLORADO

STATE HIGHWAY DEPARTMENT

PLAN AND PROFILE OF PROPOSED FEDERAL AID PROJECT NO. CR 11-0002-24 STATE HIGHWAY NO. 182 *6* JEFFERSON COUNTY

CONVENTIONAL SIGNS



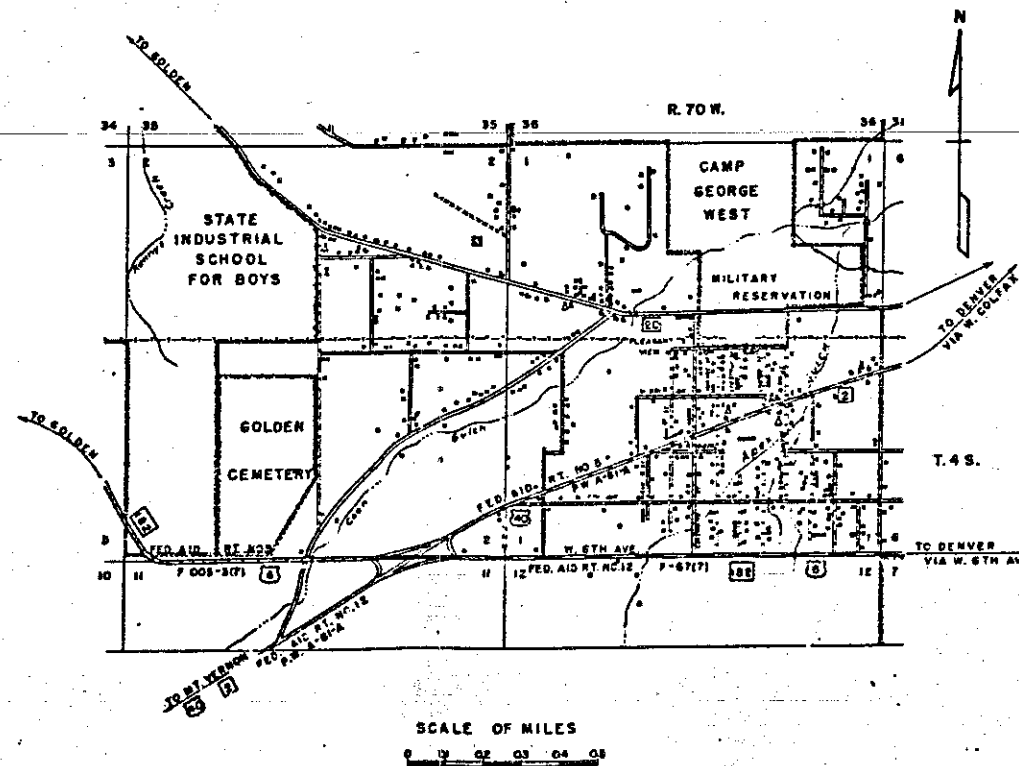
- INDEX OF SHEETS**
- SHEET NO. 1. TITEL SHEET
 2. TABULATION OF PROPERTIES
 3. PLAN & PROFILE
 4. OWNERSHIP

SCALES OF ORIGINAL DRAWINGS

ON PLAN, 1 IN. - 100 FT.
 ON PROFILE) 1 IN. - 100 FT. HORIZONTAL
) 1 IN. - 10 FT. VERTICAL

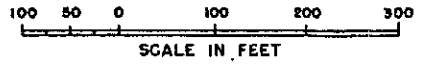
GRADE LINE ON PROFILE IS SHOWN AS GRADE OF FINISHED ROAD
 GROSS LENGTH OF PROJECT
 NET LENGTH OF PROJECT

RIGHT OF WAY
 INFORMATION OBTAINED FROM AVAILABLE COUNTY RECORDS



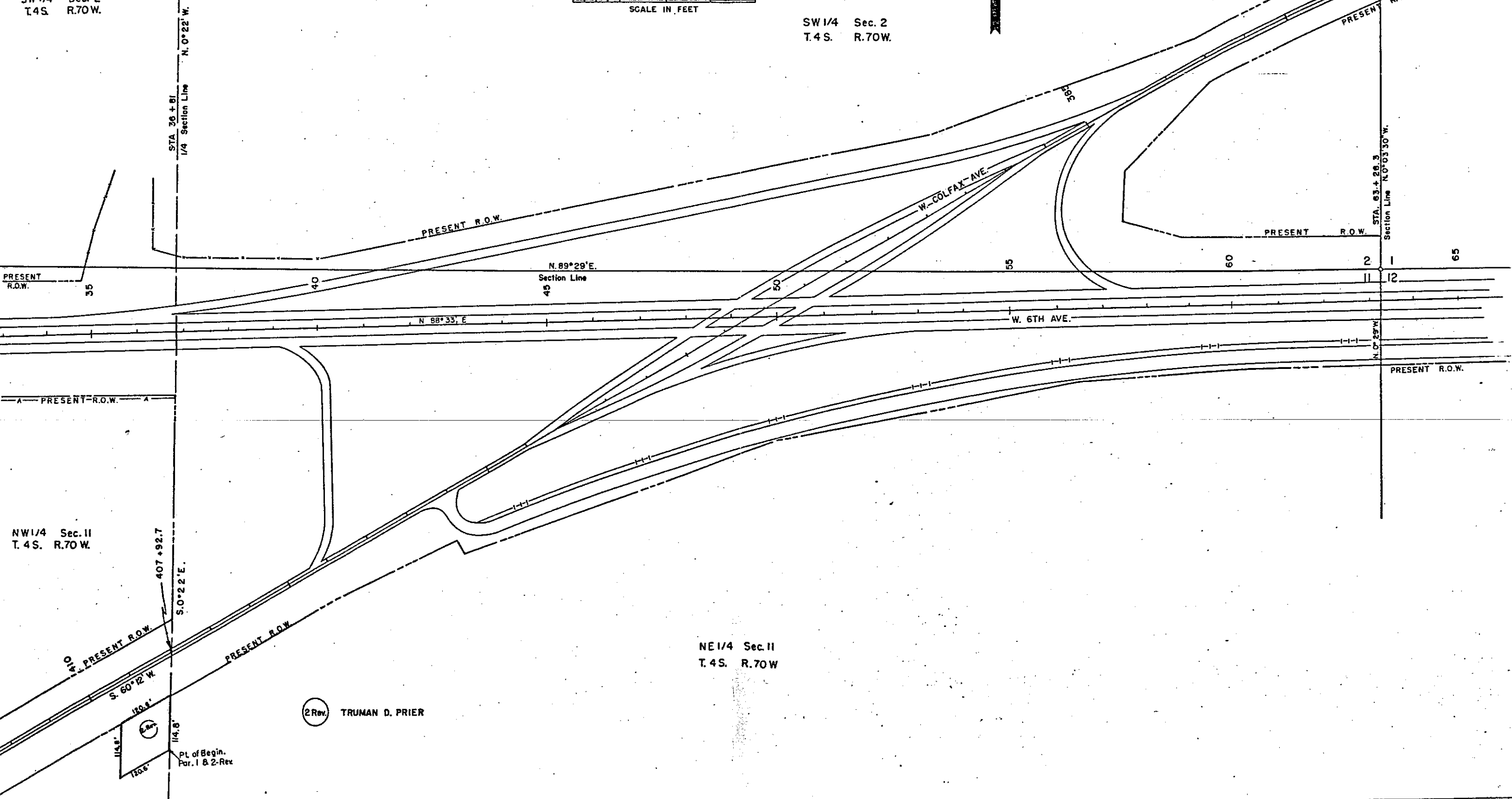
Rev. 9-25-56 2-Rev. E.M.	FEDERAL ROAD DIVISION NO.	DISTRICT	PROJ. NO.	SHEET NO.	TOTAL SHEETS
Rev. 12-13-56 3 Rev. R.E.C.	9	COLORADO	CR11-0002-24	3	
Rev. 3-27-58 F.C.M.	Right of Way Rev. 10-30-56 S.W.Z. Proj. No. Changed				
Rev. 3-20-57 F.C.M.	(Deleted Parcels 1, 3 Rev. 2, 4, 4A, 5 Rev. 5A & 6)				
Rev. 5-9-58 R.E.C.	Rev. 5-28-58 R.E.C.				

INTERSECTION W. COLFAX AVE. & W. 6TH AVE.



SW 1/4 Sec. 2
T.4S. R.70W.

SW 1/4 Sec. 2
T.4S. R.70W.



NW 1/4 Sec. 11
T.4S. R.70W.

NE 1/4 Sec. 11
T.4S. R.70W.

2 Rev. TRUMAN D. PRIER

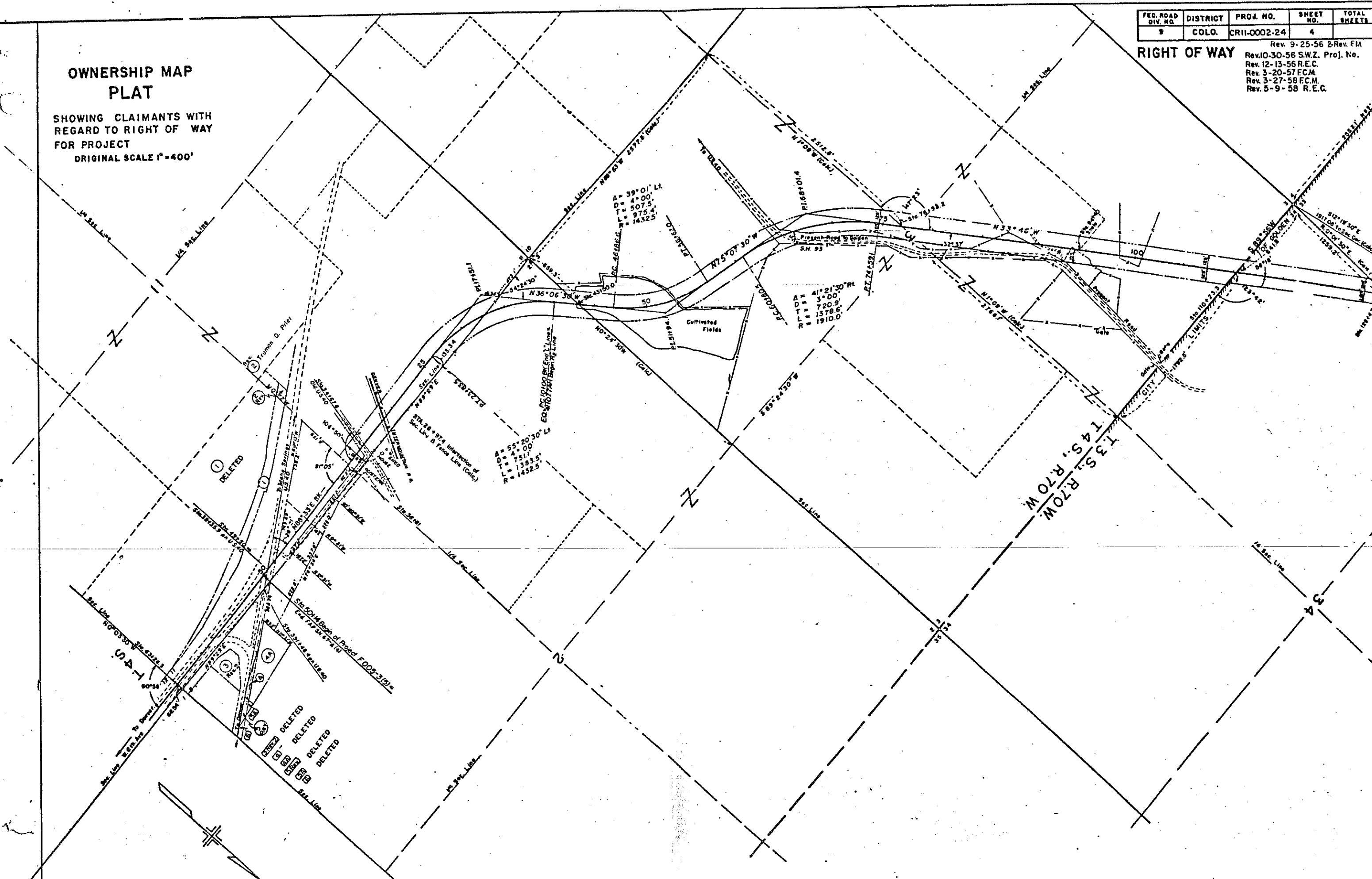
Pt. of Begin.
Par. 1 & 2-Rev

FED. ROAD DIV. NO.	DISTRICT	PROJ. NO.	SHEET NO.	TOTAL SHEETS
9	COLO.	CR11-0002-24	4	

RIGHT OF WAY
 Rev. 9-25-56 2-Rev. FIA
 Rev. 10-30-56 S.W.Z. Proj. No.
 Rev. 12-13-56 R.E.C.
 Rev. 3-20-57 F.C.M.
 Rev. 3-27-58 F.C.M.
 Rev. 5-9-58 R.E.C.

OWNERSHIP MAP PLAT

SHOWING CLAIMANTS WITH REGARD TO RIGHT OF WAY FOR PROJECT
 ORIGINAL SCALE 1" = 400'



DELETED

DELETED
 DELETED
 DELETED
 DELETED

