

COLORADO DEPARTMENT OF HIGHWAYS

PLAN AND PROFILE OF PROPOSED FEDERAL AID PROJECT NO. CT 61-0091-18 STATE HIGHWAY NO. 91 SUMMIT COUNTY

SHEET NO.

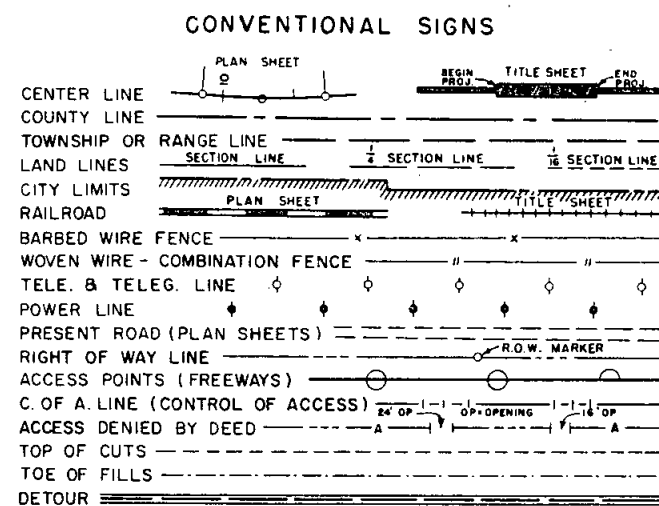
FEDERAL ROAD REGION NO.	DIVISION	PROJECT NO.	SHEET NO.
9	COLORADO	CT 61-0091-18	1

RIGHT OF WAY
 CLIMAX - NORTH

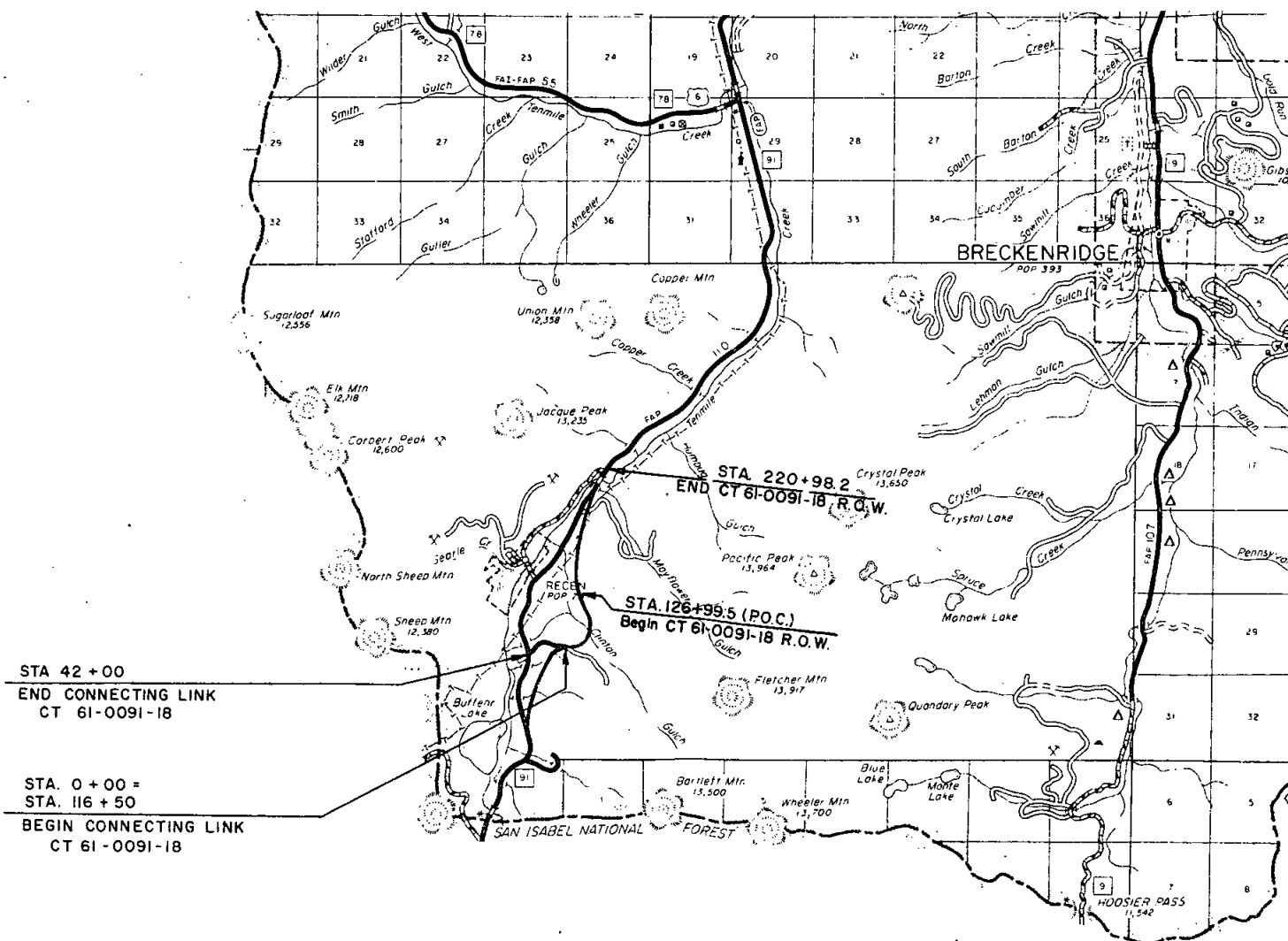
REVISIONS		
DATE	INDEX	REC.
2-18-64	Index	---
10-26-64	Begin R.O.W. sta., Index &	---
	Length of Project	LP

INDEX OF SHEETS

- 1 TITLE SHEET
- 2 TABULATION SHEET
- 3-6 PLAN SHEETS
- 7 OWNERSHIP MAP



SCALES OF ORIGINAL DRAWINGS
 ON PLAN, 1 IN. = 100 FT.
 ON PROFILE, 1 IN. = 100 FT. HORIZONTAL
 1 IN. = 10 FT. VERTICAL
 GRADE LINE ON PROFILE IS SHOWN AS GRADE OF FINISHED ROAD
 LENGTH OF PROJECT = 1.728 MILES (R.O.W.)



R. O. W. TABULATION OF PROPERTIES IN SUMMIT COUNTY S.H.No. 91 PROJ CT 61-0091-18

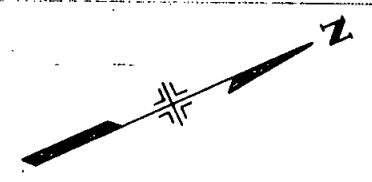
FEDERAL ROAD DIVISION NO.	DISTRICT	PROJECT NO.	SHEET NO.
9	COLORADO	CT 61-0091-18	2

RIGHT OF WAY CLIMAX - NORTH

PARCEL NO.	OWNER	ADDRESS	LOCATION	AREA IN ACRES			PURCHASE DATA					REMARKS	NO.
				PARCEL	TO BE ACQUIRED	REMAINDER	LAND	IMPROV'M'TS	DAMAGE	MISC.	TOTAL		
			T. 7 S., R. 79 W., 6th P.M.										
1-A	U. S. LAND			1.253	1.253								
1 Rev.2	U. S. LAND			3.552	3.552								
2 Rev.2	U. S. LAND			3.554	3.554								
3 Rev.3	U. S. LAND			1.969	1.969								
4 Rev.2	DELETED												
5 Rev	U. S. LAND			27.608	27.608								
6	W. WALTER BYRON	KOKOMO, COLO.	EMMET & LOWE PLACER	0.439	0.439								
7	U. S. LAND			1.395	1.395								
8	U. S. LAND			10.453	9.605								
9	U. S. LAND			2.097	1.597								
10	DELETED												
E-10	DELETED												
11	DELETED												

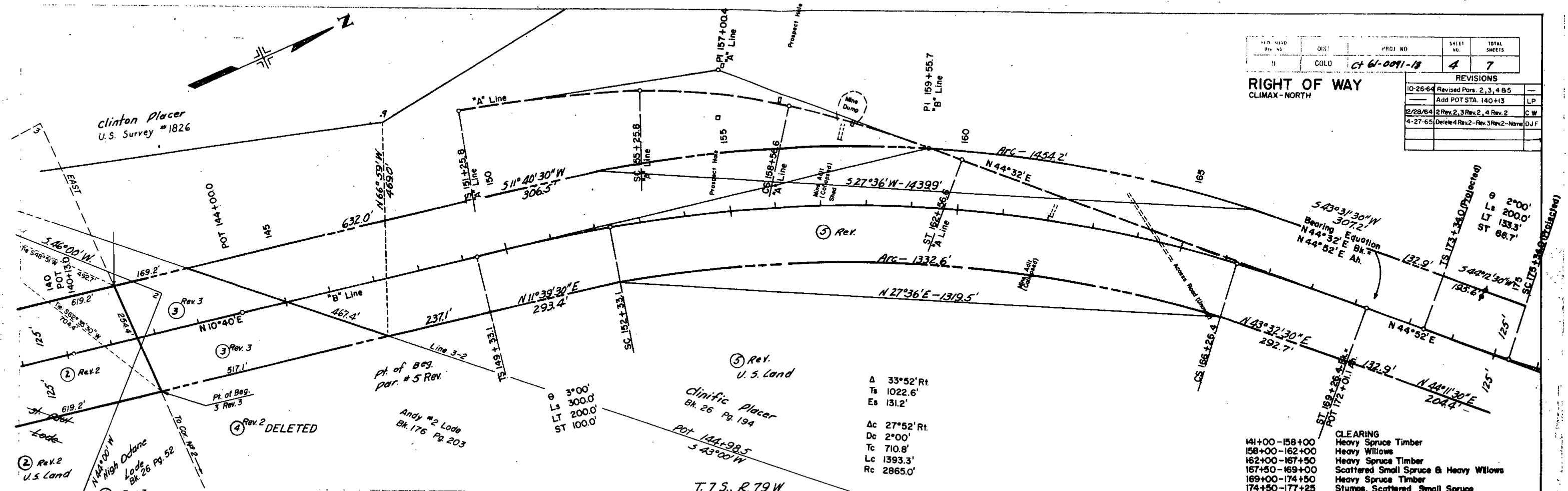
REVISIONS		
2-18-64	add 10, E10, 11	REC
10-26-64	Revised Pars. 1, 2, 3, 4 & 5 also	
	Deleted Pars. 10, E-10 & 11	LP
2-28-64	add 1-A, Rev. par. 1, 2, 3, 4	CW
4-27-65	Rev. 3 Rev. 2 - Delete 4 Rev 2	DJF

PARCEL 1-A ON DEED WITH 10 Rev. 3 PROJECT CC 61-0091-18



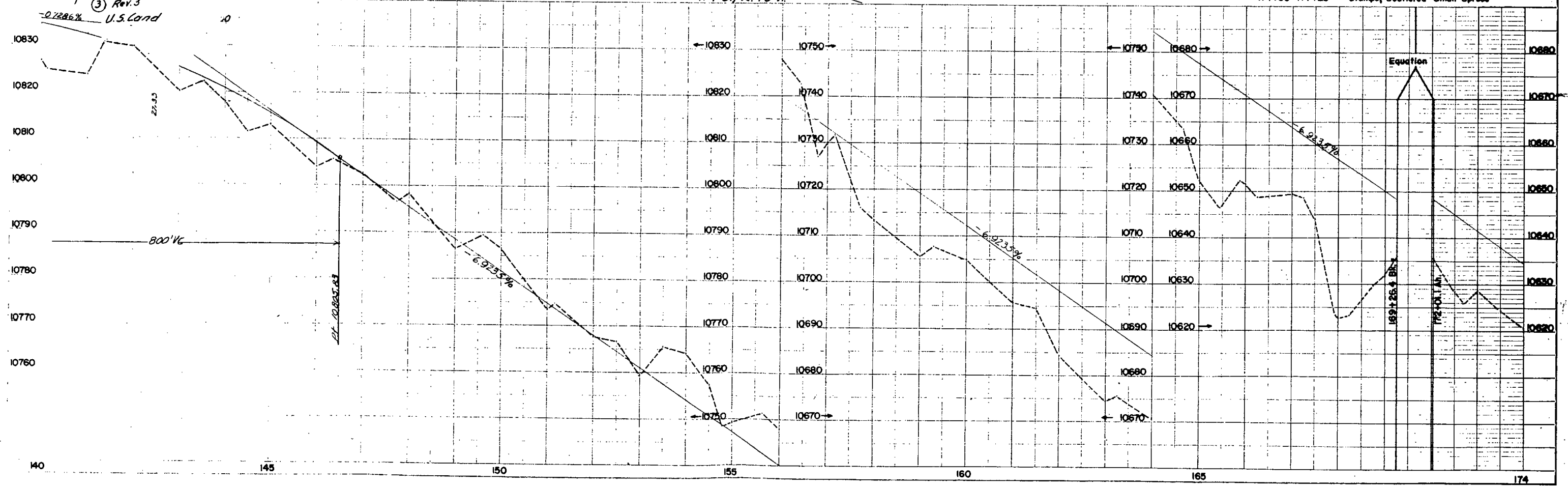
PROJ. NO.	DIST.	PROJ. NO.	SHEET NO.	TOTAL SHEETS
61-0091-18	COLO.	61-0091-18	4	7

RIGHT OF WAY		REVISIONS	
CLIMAX-NORTH			
10-26-64	Revised Pars. 2, 3, 4 & 5	LP	
	Add POT STA. 140+13	CW	
2/28/64	2 Rev. 2, 3 Rev. 2, 4 Rev. 2	DJF	
4-27-65	Delete 4 Rev. 2 - Rev. 3 Rev. 2 - Name		



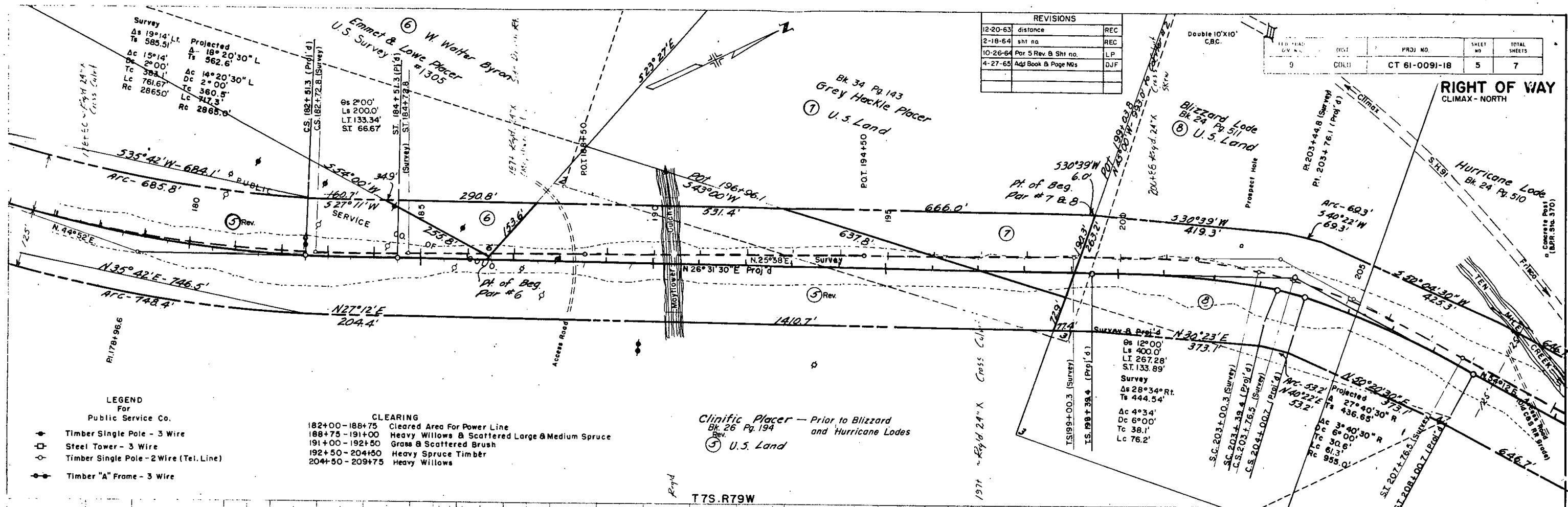
Δ 33°52' Rt.
 Ts 1022.6'
 Es 131.2'
 Δc 27°52' Rt.
 Dc 2°00'
 Lc 1393.3'
 Rc 2865.0'

CLEARING
 141+00-158+00 Heavy Spruce Timber
 158+00-162+00 Heavy Willows
 162+00-167+50 Heavy Spruce Timber
 167+50-169+00 Scattered Small Spruce & Heavy Willows
 169+00-174+50 Heavy Spruce Timber
 174+50-177+25 Stumps, Scattered Small Spruce

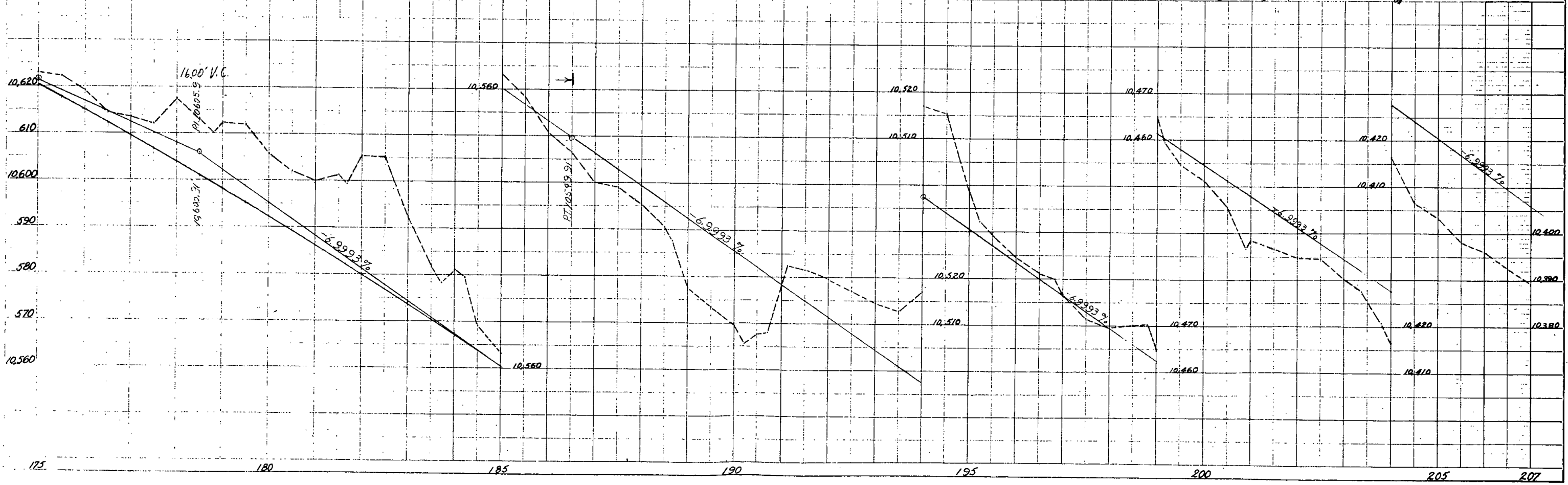


REVISIONS		
12-20-63	distance	REC
2-18-64	sht no	REC
10-26-64	Par 5 Rev & Sht no	LP
4-27-65	Adj Book & Page Nos	DJF

REVISED	DATE	PROJ NO	SHEET NO	TOTAL SHEETS
9	COL:1	CT 61-0091-18	5	7



- LEGEND**
For
Public Service Co.
- ◆ Timber Single Pole - 3 Wire
 - Steel Tower - 3 Wire
 - ◇ Timber Single Pole - 2 Wire (Tel. Line)
 - ◆ Timber "A" Frame - 3 Wire
- CLEARING**
- 182+00-188+75 Cleared Area For Power Line
 - 188+75-191+00 Heavy Willows & Scattered Large & Medium Spruce
 - 191+00-192+50 Grass & Scattered Brush
 - 192+50-204+50 Heavy Spruce Timber
 - 204+50-209+75 Heavy Willows



PLAN
1:1
1/2" = 100'

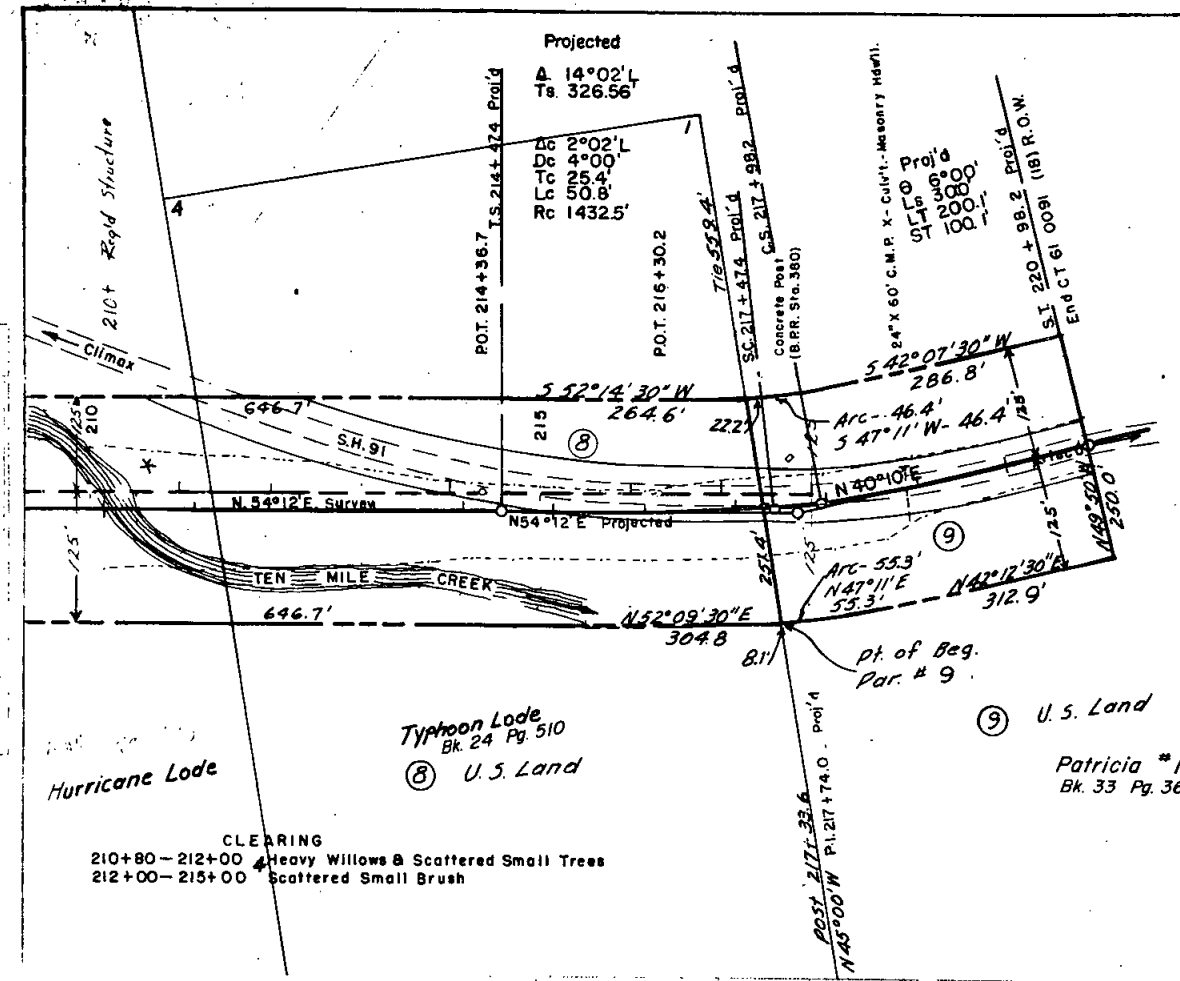
PROFILE
1:1
1" = 100'

FED. ROAD DIV. NO.	DIST.	PROJ. NO.	SHEET NO.	TOTAL SHEETS
9	COLD.	CT 61-0091-18	6	7

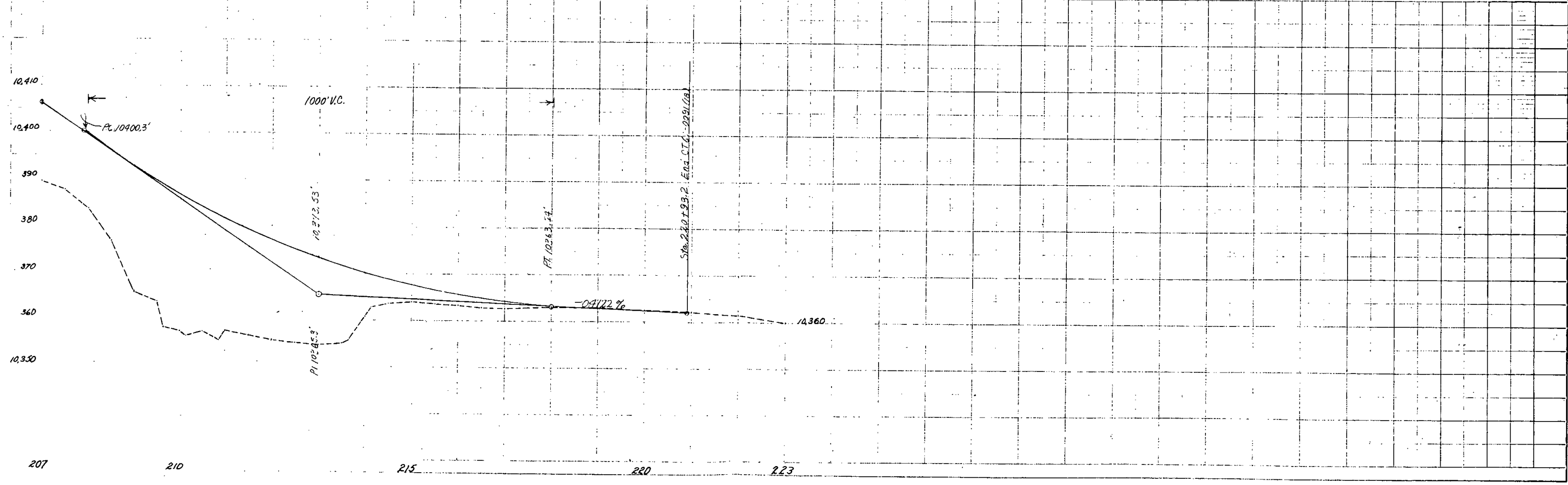
RIGHT OF WAY
CLIMAX - NORTH

REVISIONS		
12-20-63	End R.O.W.	REC
2-18-64	shf no.	REC
10-26-64	Shf no.	LP
4-27-65	Name - Book & Page No	D.J.F.

DATE	BY	REVISION



T7S. R79W



J.M. Anderson - RE 1963
APPROXIMATE

COLORADO DEPARTMENT OF HIGHWAYS

PROJECT NO. CT 61-0091-18

ROW OWNERSHIP MAP

SUMMIT COUNTY

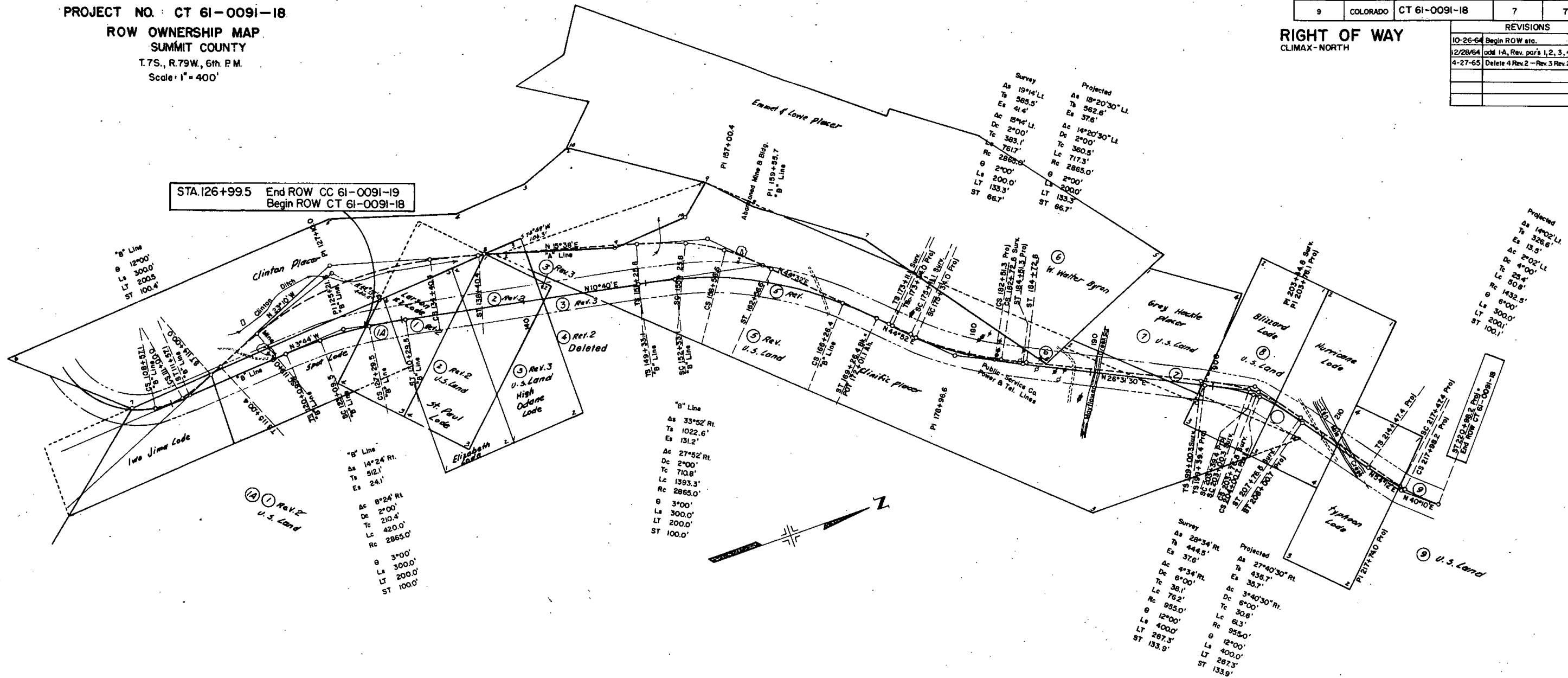
T.7S., R.79W., 6th. P.M.

Scale 1" = 400'

FEDERAL ROAD DIVISION NO.	DISTRICT	PROJ. NO.	SHEET NO.	TOTAL SHEETS
9	COLORADO	CT 61-0091-18	7	7

RIGHT OF WAY
CLIMAX - NORTH

REVISIONS		
10-26-64	Begin ROW etc.	LP
12/28/64	add 1-A, Rev. par's 1, 2, 3, 4	CW
4-27-65	Delete 4 Rev. 2 - Rev. 3 Rev. 2	DJF



STA. 126+99.5 End ROW CC 61-0091-19
Begin ROW CT 61-0091-18

"B" Line
As 12°00'
Ts 300.0'
Ls 200.5'
ST 100.4'

"B" Line
As 14°24' Rt.
Ts 52.1'
Es 24.1'
Ac 8°24' Rt.
Dc 2°00'
Tc 210.4'
Lc 420.0'
Rc 2865.0'
G 3°00'
Ls 300.0'
Lt 200.0'
ST 100.0'

"B" Line
As 33°52' Rt.
Ts 1022.6'
Es 131.2'
Ac 27°52' Rt.
Dc 2°00'
Tc 710.8'
Lc 1393.3'
Rc 2865.0'
G 3°00'
Ls 300.0'
Lt 200.0'
ST 100.0'

Survey
As 19°14' Lt.
Ts 365.5'
Es 41.4'
Ac 19°14' Lt.
Dc 2°00'
Tc 363.1'
Lc 761.7'
Rc 2865.0'
G 2°00'
Ls 200.0'
Lt 133.3'
ST 86.7'

Projected
As 18°20'30" Lt.
Ts 362.6'
Es 37.6'
Ac 14°20'30" Lt.
Dc 2°00'
Tc 360.5'
Lc 717.3'
Rc 2865.0'
G 2°00'
Ls 200.0'
Lt 133.3'
ST 86.7'

Projected
As 14°02' Lt.
Ts 326.6'
Es 13.5'
Ac 2°02' Lt.
Dc 2°00'
Tc 23.4'
Lc 50.8'
Rc 1432.5'
G 6°00'
Ls 300.0'
Lt 200.1'
ST 100.1'

Survey
As 29°34' Rt.
Ts 444.5'
Es 37.6'
Ac 4°34' Rt.
Dc 6°00'
Tc 38.1'
Lc 76.2'
Rc 955.0'
G 12°00'
Ls 400.0'
Lt 267.3'
ST 133.9'

Projected
As 27°40'30" Rt.
Ts 438.7'
Es 35.7'
Ac 3°40'30" Rt.
Dc 6°00'
Tc 30.6'
Lc 61.3'
Rc 953.0'
G 12°00'
Ls 400.0'
Lt 267.3'
ST 133.9'