

STATE DEPARTMENT OF HIGHWAYS

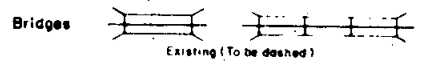
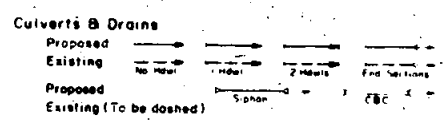
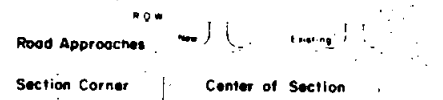
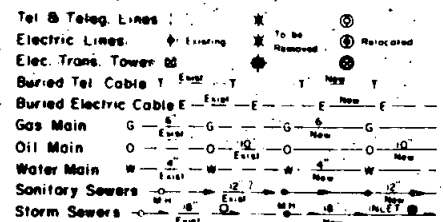
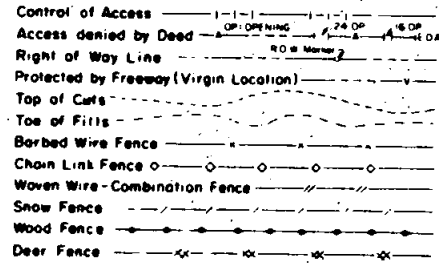
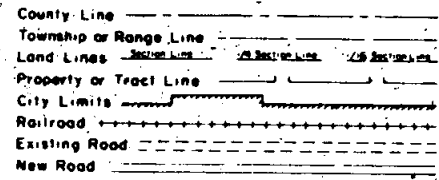
DIVISION OF HIGHWAYS—STATE OF COLORADO

FEDERAL ROAD REGION NO.	DIVISION	PROJECT NO.	SHEET NO.
VIII	COLORADO	C11-0074-16	1

RIGHT OF WAY
Evergreen-North

REVISIONS	

CONVENTIONAL SIGNS



PLAN AND PROFILE OF PROPOSED COLORADO PROJECT NO. C11-0074-16 STATE HIGHWAY NO. 74 JEFFERSON COUNTY

RIGHT OF WAY

SCALE OF ORIGINAL DRAWINGS

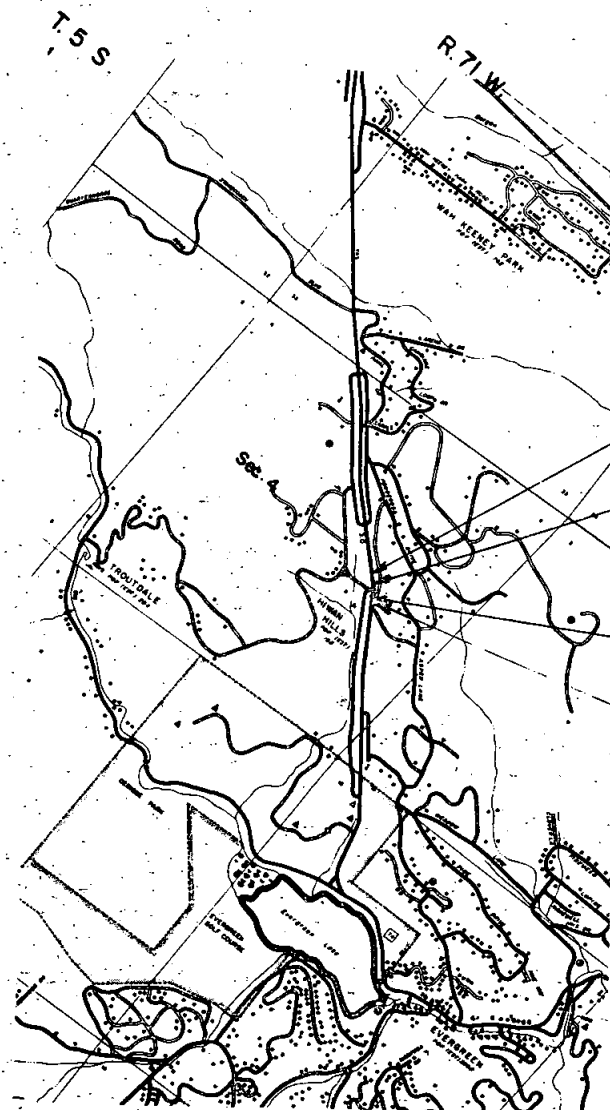
PLAN SHEETS 1" =
DETAIL SHEETS 1" =
OWNERSHIP MAPS 1" =

ROW LENGTH OF PROJECT = 349.8 FEET

INDEX OF SHEETS

- SHEET NO.
1. Title Sheet.
 2. Tabulation Sheet.
 3. Detail Sheet showing R.O.W.

NOTE: This project calculated and checked by field forces.



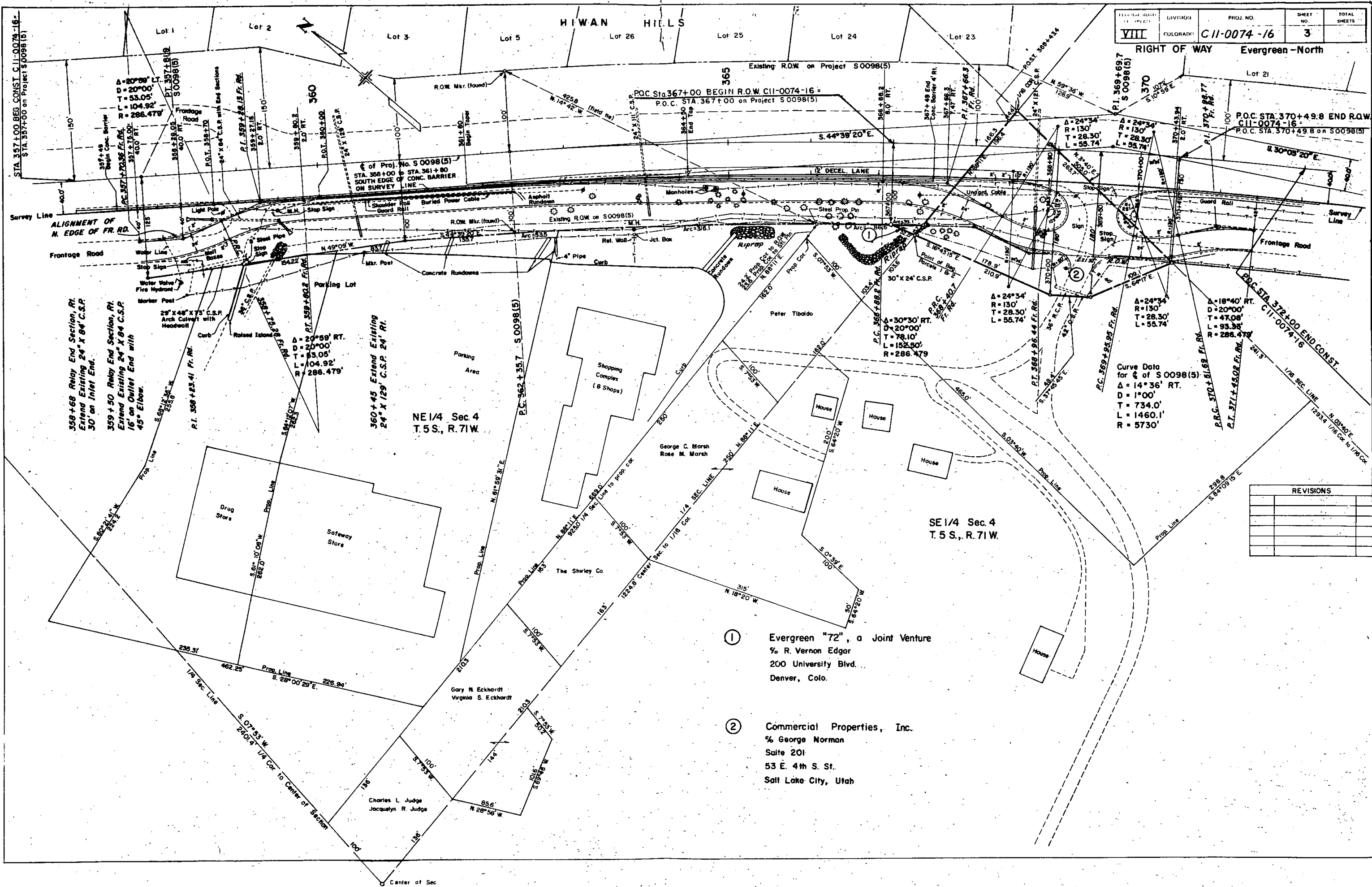
STA. 357+00 BEGIN CONST. C11-0074-16 =
STA. 357+00 on Project S 0098 (5)

P.O.C. STA. 367+00 BEGIN R.O.W. C11-0074-16 =
STA. 367+00 on R.O.W. Proj. S 0098 (5)

P.O.C. STA. 370+49.8 END R.O.W. C11-0074-16 =
STA. 370+49.8 on R.O.W. Proj. S 0098 (5)

STA. 372+00 END CONST. C11-0074-16 =
STA. 372+00 on Project S 0098 (5)

RIGHT OF WAY Evergreen-North



Curve Data for $\frac{1}{4}$ of S0098(5)
 $\Delta = 14^{\circ}36'$ RT.
 $D = 1^{\circ}00'$
 $T = 734.0'$
 $L = 1460.1'$
 $R = 5730'$

REVISIONS	

① Evergreen "72", a Joint Venture
 % R. Vernon Edgar
 200 University Blvd.
 Denver, Colo.

② Commercial Properties, Inc.
 % George Norman
 Suite 201
 53 E. 4th S. St.
 Salt Lake City, Utah