

DATE	2/22/57	BY	W.S.
PROJECT	C 13-0002-05		
RIGHT OF WAY	RIGHT OF WAY		

CONVENTIONAL SIGNS

COLORADO
DEPARTMENT OF HIGHWAYS
PLAN AND PROFILE OF PROPOSED
FEDERAL AID PROJECT NO. C 13-0002-05
STATE HIGHWAY NO. 2
LOGAN COUNTY

INDEX OF SHEETS

SHEET NO. 1 TITLE SHEET
 2 TABULATION OF PROPERTIES;
 3-5 PLAN AND PROFILE SHEETS
 6 SHOWING RIGHT OF WAY,
 OWNERSHIP MAP.

ACCESS RIGHTS FOR C13-0002-05

	FROM	TO
LEFT	STA. 16 + 42.2	STA. 22 + 87.4
LEFT	STA. 17 + 97.2	STA. 22 + 87.4
LEFT	STA. 69 + 39.9	STA. 129 + 83.4

PUBLIC OPENINGS

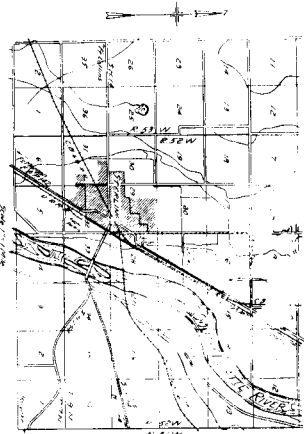
Approx. STA.

LEFT	STA. 20	SERVICE ROAD
LEFT	STA. 33 +	SERVICE ROAD
LEFT	STA. 38 + 30	SERVICE ROAD
LEFT	STA. 54 +	SERVICE ROAD
LEFT	STA. 89	COUNTY ROAD

PRIVATE OPENINGS

	STATION	DEPTH
LEFT	1 + 1	20'
LEFT	STA. 70 + 39.7	20'
LEFT	STA. 85 + 40	24'
LEFT	STA. 106 + 15	24'

SCALES OF ORIGINAL TRACINGS
 ON PLAN: 1" = 100 FT. HORIZONTAL
 ON PROFILE: 1" = 10 FT. VERTICAL
 GRADE LINE ON PROFILE IS SHOWN AS GRADE OF FINISHED ROAD
 NET LENGTH OF PROJECT 1.37 MILES



THE CITY OF HOUSTON
 REMOVE FROM OFFICE

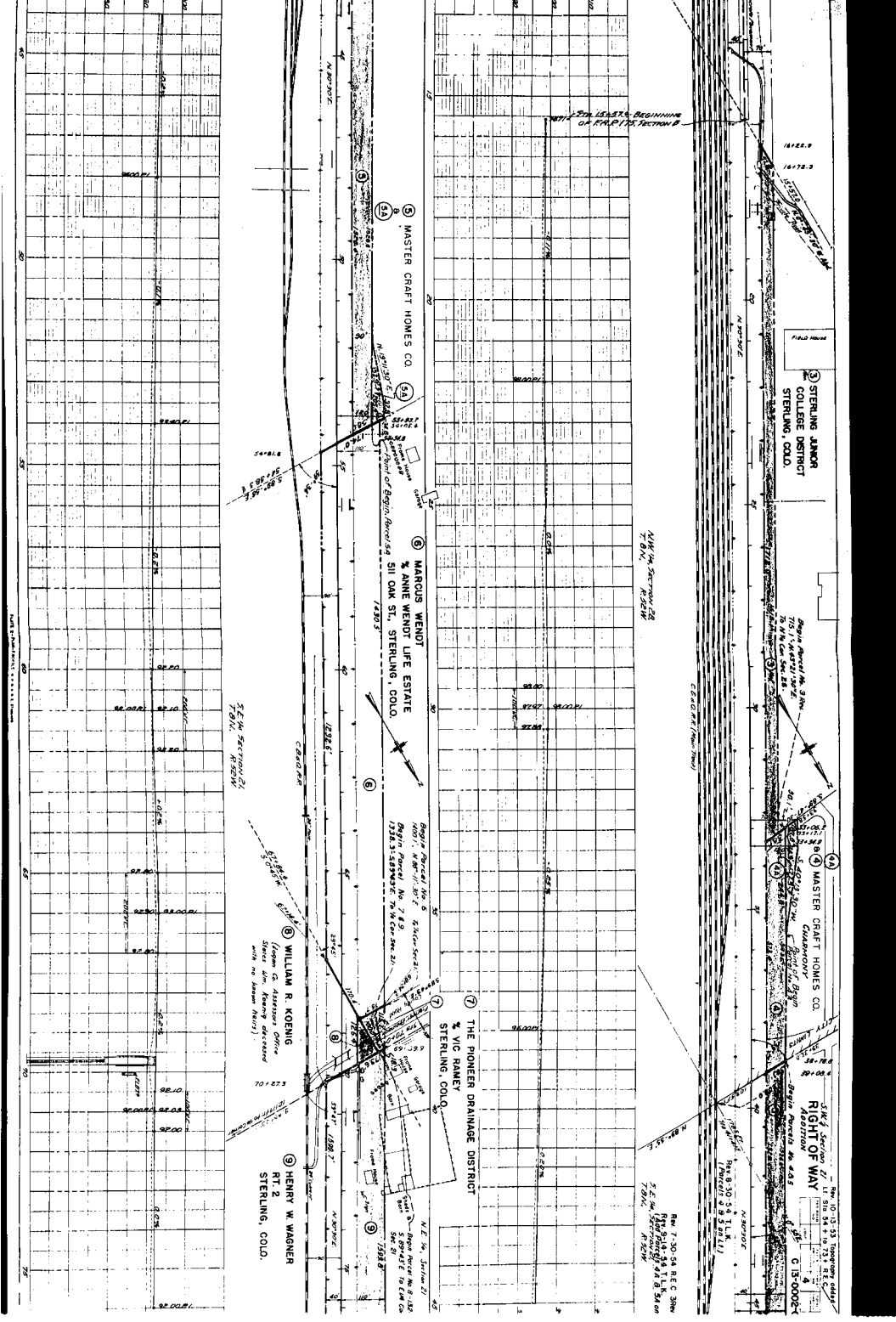
THE CITY OF HOUSTON
 REMOVE FROM OFFICE

ROW, TABULATION OF PROPERTIES IN LOGAN COUNTY S.H. No. 2 PROJ. C 13-0002-05

PARCEL NO.	OWNER	ADDRESS	LOCATION	AREA TENTATIVE IN ACRES	IN PARCEL	ACRES AS ADJUSTED													
1	Dated		T 8 N., R 32 W.																
2	THE COUNTY COMMISSIONERS, OF LOGAN COUNTY	STERLING, COLO.	SW1/4NW1/4 SEC. 28	13:	3.635	2.922													
3	STERLING JUNIOR COLLEGE DISTRICT	STERLING, COLO.	E1/2NW1/4 SEC. 28	13:	1.172	1.172													
4	MASTER CRAFT HOMES COMPANY	STERLING, COLO.	NE1/4NW1/4 SEC. 28	11:	0.658	0.565													
4A	MASTER CRAFT HOMES COMPANY	STERLING, COLO.	S1/2S1/2 SEC. 21	44:	0.114	1.682													
5A	MARGUS WEIROT	1/2 ANNE WEIROT LIFE ESTATE 511 OAK STREET, STERLING, COLO.	NW1/4SE1/4 SEC. 21	66:00	0.284	0.284													
6	MARGUS WEIROT	511 OAK STREET, STERLING, COLO.			4.733	2.298													
7	THE PIONEER DRAINAGE DISTRICT CO VIC RAMEY	STERLING, COLO.	NW1/4SEC1/4 SEC. 21	12:69	0.108	0.108													
8	WILLIAM KOENIG		NE1/4SE1/4 SEC. 21		0.079	0.079													
9	HENRY W. WAGNER	RT. 2 STERLING, COLO.	S 1/2 NE 1/4 SEC. 21	84	5.509	2.571													
10	MINNIE L. CHEARNS CO FLOYD SMITH	SECURITY STATE BANK BLDG. STERLING, COLO.	N1/2 NE1/4 SEC. 21	80	3.107	1.599													
11	MINNIE L. CHEARNS CO FLOYD SMITH	SECURITY STATE BANK BLDG. STERLING, COLO.	NW 1/4 NW 1/4 SEC. 22	80	2.153	0.845													
12	RAYMOND L. SAUTER & MARGA G. SAUTER	126 DELMAR ST., STERLING, COLO.	SW 1/4 SEC. 9	69	9.866	4.612													
13	DEPARTMENT OF HIGHWAYS - STATE OF COLO.		SW 1/4 NW 1/4 SEC. 28		0.430	0.430													
14	DEPARTMENT OF HIGHWAYS - STATE OF COLORADO		SW 1/4 NW 1/4 SEC. 28		0.749	0.749													

PROJECT NAME: DISTRICT: PROJ. NO.: SHEET NO.: TITLE:
 13-0002-05 2
 RIGHT OF WAY
 N44° 57' 10" E 1/4 S 1/4 R 32 W
 N 1/2 S 1/2 SEC. 21
 REMARKS: See 28-20-55 2nd 3 0' L.F.
 8/27/2013

SOLD TO GERALD T. HART
 SOLD TO GERALD T. HART



1472.2
1472.2

FIELD BOOK

② STERLING JAMON COLLEGE DISTRICT STERLING, COLO.

③ MARQUIS WENDT % ANNE WENDT LIFE ESTATE SIL OAK ST., STERLING, COLO.

④ WILLIAM R. KOENIG (Owner's Assessor Office, State Ass. Assessor's Office with no known heirs)

⑤ HENRY W. WAGNER RT 2 STERLING, COLO.

⑥ MASTER CRAFT HOMES CO.

⑦ THE PIONEER DRAINAGE DISTRICT % VIC RAMEY STERLING, COLO.

47.74' SECTION 28
7.6' W. 1/4
N. 20° 55' E.

32.00' SECTION 29

7.30' SECTION 28
7.6' W. 1/4
N. 20° 55' E.

32.00' SECTION 29

32.00' SECTION 30

32.00' SECTION 31

32.00' SECTION 32

32.00' SECTION 33

32.00' SECTION 34

32.00' SECTION 35

32.00' SECTION 36

32.00' SECTION 37

32.00' SECTION 38

32.00' SECTION 39

32.00' SECTION 40

32.00' SECTION 41

32.00' SECTION 42

32.00' SECTION 43

32.00' SECTION 44

32.00' SECTION 45

32.00' SECTION 46

32.00' SECTION 47

32.00' SECTION 48

32.00' SECTION 49

32.00' SECTION 50

32.00' SECTION 51

32.00' SECTION 52

32.00' SECTION 53

32.00' SECTION 54

32.00' SECTION 55

32.00' SECTION 56

32.00' SECTION 57

32.00' SECTION 58

32.00' SECTION 59

32.00' SECTION 60

32.00' SECTION 61

32.00' SECTION 62

32.00' SECTION 63

32.00' SECTION 64

32.00' SECTION 65

32.00' SECTION 66

32.00' SECTION 67

32.00' SECTION 68

32.00' SECTION 69

32.00' SECTION 70

32.00' SECTION 71

32.00' SECTION 72

32.00' SECTION 73

32.00' SECTION 74

32.00' SECTION 75

32.00' SECTION 76

32.00' SECTION 77

32.00' SECTION 78

32.00' SECTION 79

32.00' SECTION 80

32.00' SECTION 81

32.00' SECTION 82

32.00' SECTION 83

32.00' SECTION 84

32.00' SECTION 85

32.00' SECTION 86

32.00' SECTION 87

32.00' SECTION 88

32.00' SECTION 89

32.00' SECTION 90

32.00' SECTION 91

32.00' SECTION 92

32.00' SECTION 93

32.00' SECTION 94

32.00' SECTION 95

32.00' SECTION 96

32.00' SECTION 97

32.00' SECTION 98

32.00' SECTION 99

32.00' SECTION 100

32.00' SECTION 101

32.00' SECTION 102

32.00' SECTION 103

32.00' SECTION 104

32.00' SECTION 105

32.00' SECTION 106

32.00' SECTION 107

32.00' SECTION 108

32.00' SECTION 109

32.00' SECTION 110

32.00' SECTION 111

32.00' SECTION 112

32.00' SECTION 113

32.00' SECTION 114

32.00' SECTION 115

32.00' SECTION 116

32.00' SECTION 117

32.00' SECTION 118

32.00' SECTION 119

32.00' SECTION 120

32.00' SECTION 121

32.00' SECTION 122

32.00' SECTION 123

32.00' SECTION 124

32.00' SECTION 125

32.00' SECTION 126

32.00' SECTION 127

32.00' SECTION 128

32.00' SECTION 129

32.00' SECTION 130

32.00' SECTION 131

32.00' SECTION 132

32.00' SECTION 133

32.00' SECTION 134

32.00' SECTION 135

32.00' SECTION 136

32.00' SECTION 137

32.00' SECTION 138

32.00' SECTION 139

32.00' SECTION 140

32.00' SECTION 141

32.00' SECTION 142

32.00' SECTION 143

32.00' SECTION 144

32.00' SECTION 145

32.00' SECTION 146

32.00' SECTION 147

32.00' SECTION 148

32.00' SECTION 149

32.00' SECTION 150

32.00' SECTION 151

32.00' SECTION 152

32.00' SECTION 153

32.00' SECTION 154

32.00' SECTION 155

32.00' SECTION 156

32.00' SECTION 157

32.00' SECTION 158

32.00' SECTION 159

32.00' SECTION 160

32.00' SECTION 161

32.00' SECTION 162

32.00' SECTION 163

32.00' SECTION 164

32.00' SECTION 165

32.00' SECTION 166

32.00' SECTION 167

32.00' SECTION 168

32.00' SECTION 169

32.00' SECTION 170

32.00' SECTION 171

32.00' SECTION 172

32.00' SECTION 173

32.00' SECTION 174

32.00' SECTION 175

32.00' SECTION 176

32.00' SECTION 177

32.00' SECTION 178

32.00' SECTION 179

32.00' SECTION 180

32.00' SECTION 181

32.00' SECTION 182

32.00' SECTION 183

32.00' SECTION 184

32.00' SECTION 185

32.00' SECTION 186

32.00' SECTION 187

32.00' SECTION 188

32.00' SECTION 189

32.00' SECTION 190

32.00' SECTION 191

32.00' SECTION 192

32.00' SECTION 193

32.00' SECTION 194

32.00' SECTION 195

32.00' SECTION 196

32.00' SECTION 197

32.00' SECTION 198

32.00' SECTION 199

32.00' SECTION 200

32.00' SECTION 201

32.00' SECTION 202

32.00' SECTION 203

32.00' SECTION 204

32.00' SECTION 205

32.00' SECTION 206

32.00' SECTION 207

32.00' SECTION 208

32.00' SECTION 209

32.00' SECTION 210

32.00' SECTION 211

32.00' SECTION 212

32.00' SECTION 213

32.00' SECTION 214

32.00' SECTION 215

32.00' SECTION 216

32.00' SECTION 217

32.00' SECTION 218

32.00' SECTION 219

32.00' SECTION 220

32.00' SECTION 221

32.00' SECTION 222

32.00' SECTION 223

⑤ HENRY W WAGNER
RT 2
STERLING, COLO.

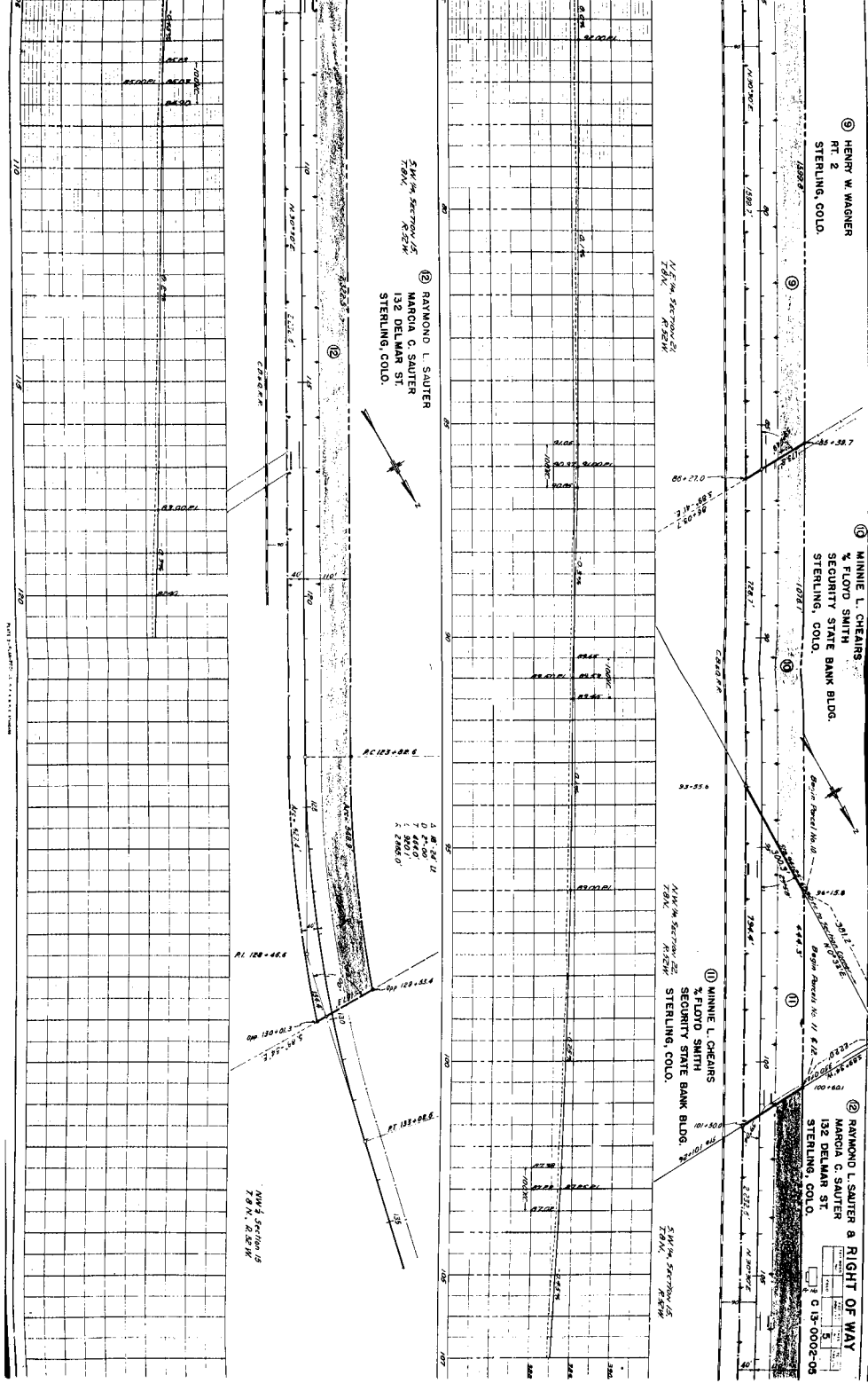
④ MINNIE L. CHEARS
& FLOD SMITH
SECURITY STATE BANK BLDG.
STERLING, COLO.

① MINNIE L. CHEARS
& FLOD SMITH
SECURITY STATE BANK BLDG.
STERLING, COLO.

② RAYMOND L SAUTER & RIGHT OF WAY
MARCA C SAUTER
132 DELMAR ST.
STERLING, COLO.

③ RAYMOND L SAUTER
MARCA C SAUTER
132 DELMAR ST.
STERLING, COLO.

④ RAYMOND L SAUTER &
RIGHT OF WAY
MARCA C SAUTER
132 DELMAR ST.
STERLING, COLO.

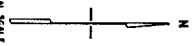


DATE	1938
BY	J. C. ...
SCALE	1" = 100'
PROJECT	SECURITY STATE BANK BLDG.
PLAT NO.	13-002-03

STERLING

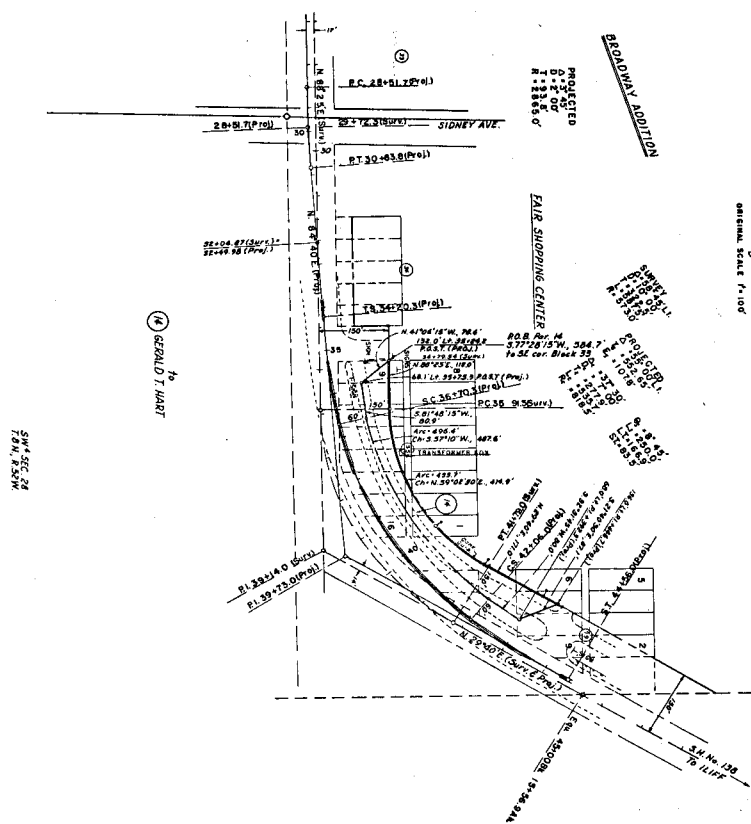
ORIGINAL SCALE 1"=100'

NW 1/4 SEC. 28
 T. 2 N., R. 2 E.



PROPOSED
 0.1' 2.0'
 T. 2.2' E.
 R. 1.8885'

FAIR SHOPPING CENTER



Produced under C-12 code 05
 Parcel 2

RIGHT OF WAY
 STERLING-ADORN

NO.	DESCRIPTION	DATE	BY	CHK.	APP.
1					
2					
3					
4					
5					
6					
7					
8					
9					
10					

20' 0.71(15)
 20' 0.71(15)

REYNOLDS I. HART

20' 0.71(15)
 20' 0.71(15)