

Rev. 4-15-57, J.C.R., Bidders Notice

# COLORADO DEPARTMENT OF HIGHWAYS PLAN AND PROFILE OF PROPOSED STATE PROJECT NO. C13-0002-11 STATE HIGHWAY NO. 2 (TRUCK ROUTE) LOGAN COUNTY

CONST. ENGR'S COPY

SCALES OF ORIGINAL DRAWINGS  
ON PLAN, 1 IN. = 100 FT.  
ON PROFILE, 1 IN. = 10 FT. HORIZONTAL  
1 IN. = 10 FT. VERTICAL  
GRADE LINE ON PROFILE IS SHOWN AS GRADE OF FINISHED ROAD.  
NET & GROSS LENGTH OF PROJECT: 2,945.4 Lin. Ft. = 0.558 MI.

- INDEX OF SHEETS**
- 1 SKETCH MAP, TITLE PAGE AND TABULATION OF LENGTH AND DESIGN.
  - 2 TYPICAL SECTIONS AND DETAIL OF CONCRETE COMBINATION CURB AND GUTTER.
  - 3 TABULATIONS OF SURFACING, SUB-BASE MATERIAL PLANS AND SUMMARY OF APPROXIMATE QUANTITIES.
  - 4 LIST OF STRUCTURES.
  - 5 PIT LOCATION
  - 6 STANDARD NO. 8 CONCRETE INLET, MANHOLE AND PIPE JOINTS ON SEWERS.
  - 7 STANDARD NO. 12 AND NO. 13 CONCRETE INLET
  - 8 STANDARD TYPES OF RAILROAD WARNING SIGNS
  - 9 STANDARD TIMBER GUARD POSTS.
  - 10 STANDARD WIRE FENCE WITH METAL POSTS
  - 11-12 STANDARD ROADWAY CONSTRUCTION TRAFFIC SIGNS (2 Sheets)
  - 13 PROJECTED LINE STA. 6+35.2 TO STA. 18+13.8 BK.
  - 14 ALIGNMENT PLAN AND PROFILE
  - 15 ALIGNMENT PLAN AND PROFILE AND SUMMARY OF EARTHWORK QUANTITIES.
  - 16-28 CROSS SECTIONS
  - 29 STANDARD METHODS FOR SUPERELEVATION AND WIDENING OF CURVES
  - 30 M-1-C

- M-12-D-8
- M-12-D-13
- M-18-B
- M-19-D
- M-27-C
- M-29-B

- CONVENTIONAL SIGNS**
- CENTER LINE OF SURVEY \_\_\_\_\_
  - RIGHT OF WAY LINES \_\_\_\_\_
  - SECTION LINES \_\_\_\_\_
  - ONE QUARTER SECTION LINES \_\_\_\_\_
  - TOWNSHIP LINES \_\_\_\_\_
  - CITY LIMITS \_\_\_\_\_
  - RAILROADS \_\_\_\_\_
  - PROPERTY OR TRACT LINE \_\_\_\_\_
  - TELEPH. & TELEG. LINE \_\_\_\_\_
  - POWER LINE \_\_\_\_\_
  - PRESENT ROAD (Plan Sheets) \_\_\_\_\_

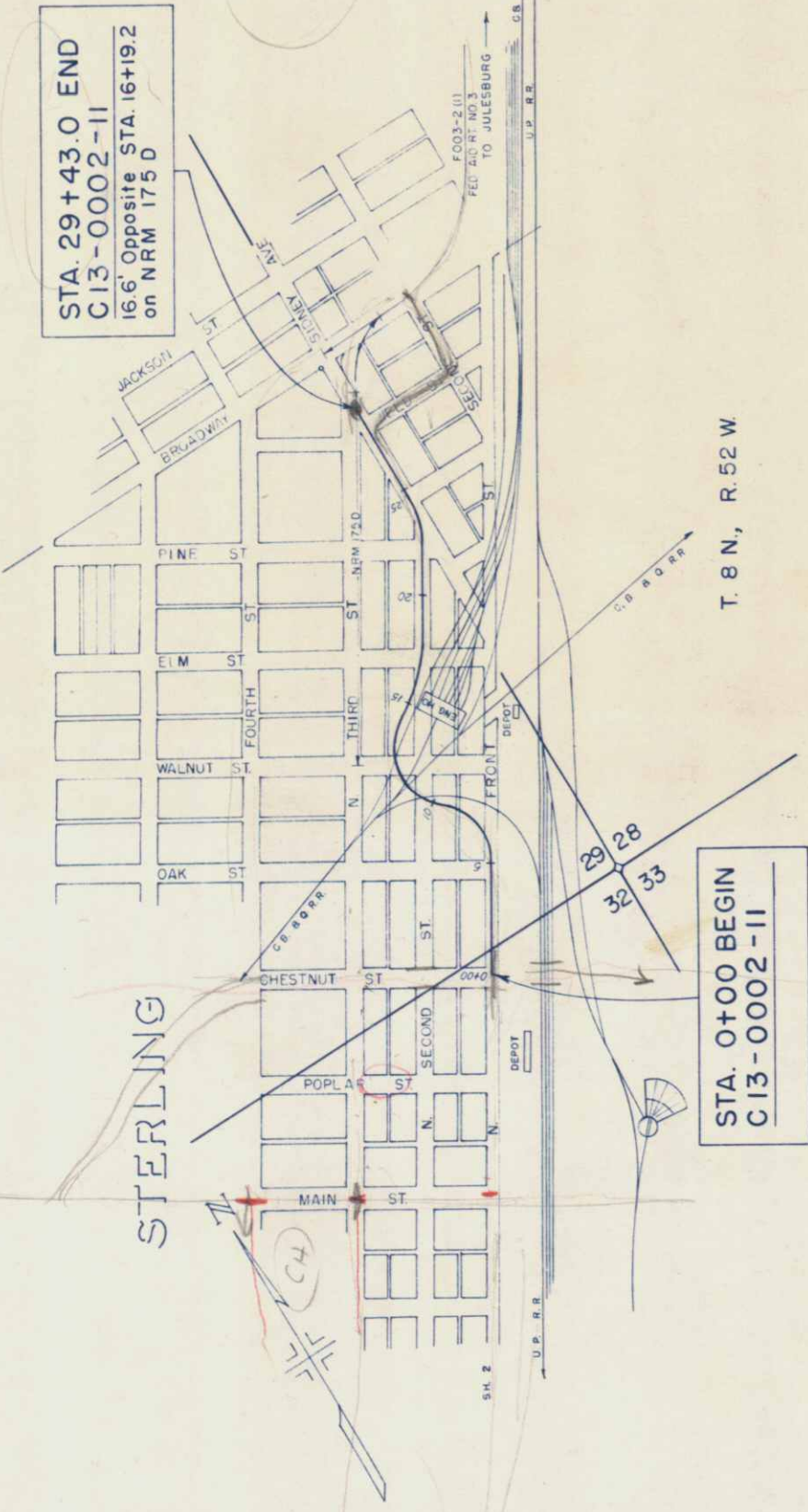
AS CONSTRUCTED PLANS  
RETURN TO DIST. 4 DESIGN



**NOTICE TO BIDDERS**  
IT IS RECOMMENDED THAT BIDDERS ON THIS PROJECT GO OVER THE PLAN DETAILS WITH ONE OF THE FOLLOWING FIELD REPRESENTATIVES OF THIS DEPARTMENT:  
E.W. OVIATT, Construction Engineer, Greeley, Colo.  
J.M. BAY, Resident Engineer, Sterling, Colo.  
Res. Phone Sterling LA 2-1717

COLORADO  
DEPARTMENT OF HIGHWAYS

APPROVED: *Mad. W. Johnson*  
CHIEF ENGINEER  
DATE: 8-27-56



**TABULATION OF LENGTH AND DESIGN**

STATION	ROADWAY	
	LIN. FT.	MILES
0+00 BEGIN C13-0002-11	1,813.8	
18+13.8 Bk. = EQUA. 18+11.4 Ah.	1,131.6	
29+43.0 END C13-0002-11 16.6' Opposite Sta. 16+19.2 on NRM 175 D		
<b>TOTAL</b>	<b>2,945.4</b>	<b>0.558</b>
<b>TOTAL (Net &amp; Gross Length)</b>	<b>2,945.4</b>	<b>0.558</b>
<b>DESIGN DATA</b>		
<b>MAXIMUM GRADE</b>	0.50 %	
<b>MAXIMUM DEGREE OF CURVE</b>	40° 33' 07"	
<b>MINIMUM N.P.S.D. - Horizontal</b>	165 Ft.	
<b>MINIMUM N.P.S.D. - Vertical</b>	1260 Ft.	
<b>MAXIMUM DESIGN SPEED</b>	25 M.P.H.	

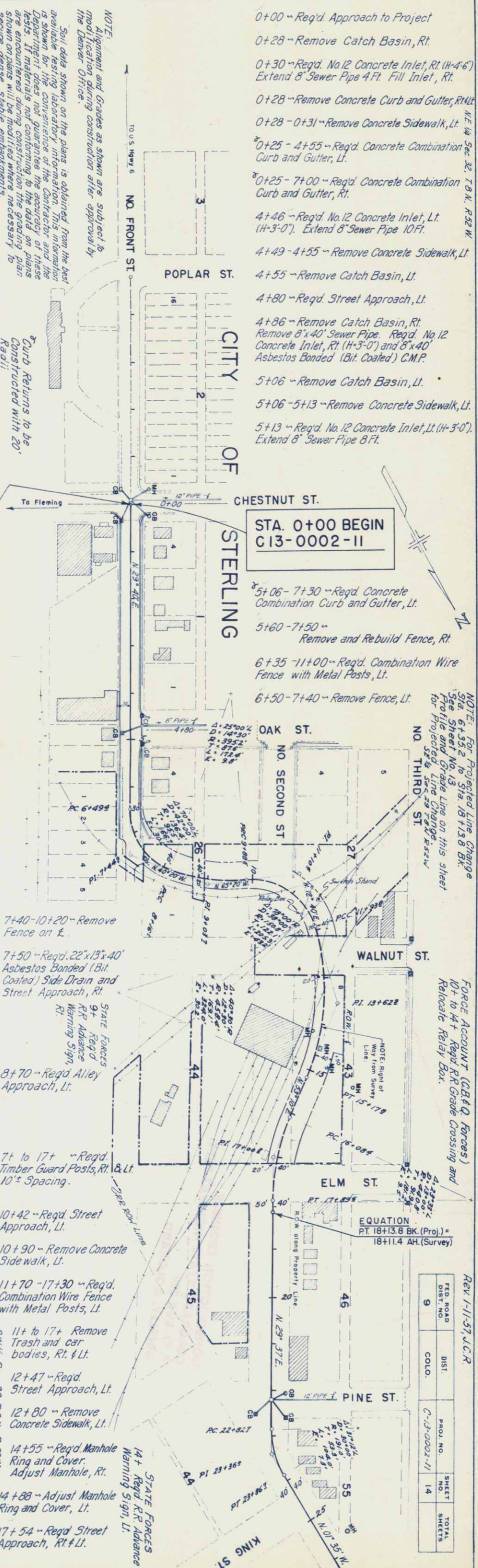
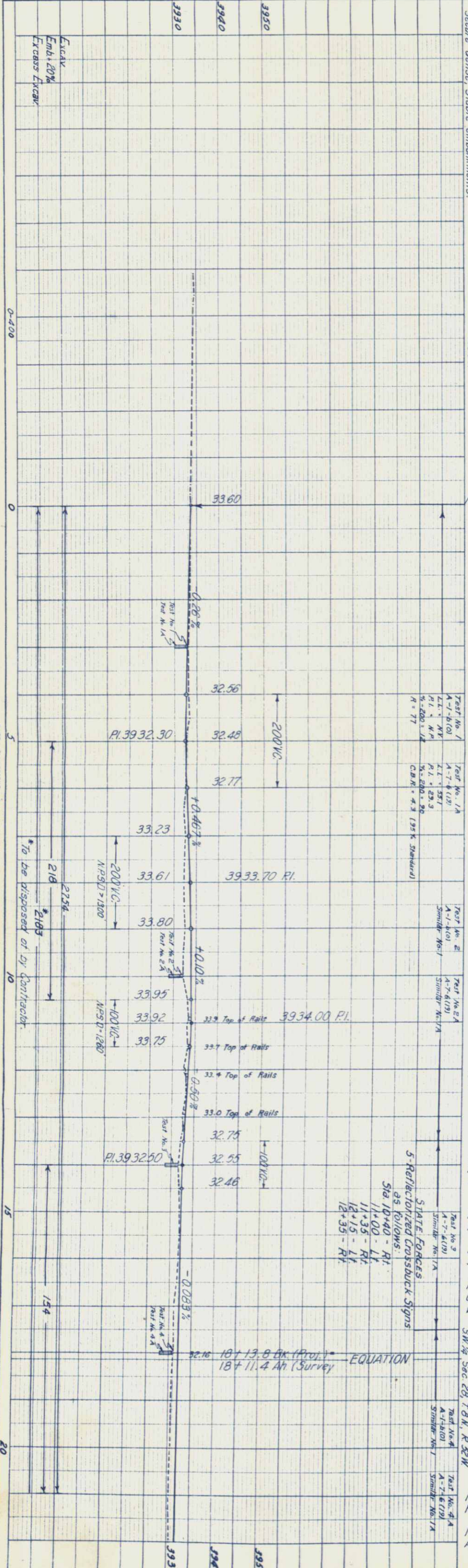
SCALE: 1" = 400 FT.  
0 200 400 800 1200 1600

T. 8 N., R. 52 W

PROFILE	SURVEYED	BY	DATE
NOTE BOOK	PLOTTED		
NO. 19210	GRADES CHECKED		
	B. M. S. NOTED		
	STRUCTURE NOTATIONS CHECKED		

PLAN	SURVEYED	BY	DATE
NOTE BOOK	PLOTTED		
NO. 19210	ALIGNMENT CHECKED		
	RT. OF WAY CHECKED		

COLORADO DEPARTMENT OF HIGHWAYS  
Form C.D.H. 134  
April 1952



NOTE: Alignment and Grades as shown are subject to modification during construction after approval by the Denver Office.

Soil data shown on the plans is obtained from the best available testing laboratory information. This information is shown for the convenience of the Contractor and the Department does not guarantee the accuracy of these tests. If materials not conforming to the data on plans are encountered during construction the grading plans shown on plans will be modified where necessary to secure dense, stable embankments.

- 0+00 ~ Req'd Approach to Project
- 0+28 ~ Remove Catch Basin, Rt.
- 0+30 ~ Req'd. No. 12 Concrete Inlet, Rt. (H-4'-6") Extend 8" Sewer Pipe 4 Ft. Fill Inlet, Rt.
- 0+28 ~ Remove Concrete Curb and Gutter, Rt. Lt.
- 0+28 - 0+31 ~ Remove Concrete Sidewalk, Lt.
- 0+25 - 4+55 ~ Req'd. Concrete Combination Curb and Gutter, Lt.
- 0+25 - 7+00 ~ Req'd. Concrete Combination Curb and Gutter, Rt.
- 4+46 ~ Req'd. No. 12 Concrete Inlet, Lt. (H-3'-0"). Extend 8" Sewer Pipe 10 Ft.
- 4+49 - 4+55 ~ Remove Concrete Sidewalk, Lt.
- 4+55 ~ Remove Catch Basin, Lt.
- 4+80 ~ Req'd. Street Approach, Lt.
- 4+86 ~ Remove Catch Basin, Rt. Remove 8" x 40" Sewer Pipe. Req'd. No. 12 Concrete Inlet, Rt. (H-3'-0") and 8" x 40" Asbestos Bonded (Bit. Coated) C.M.P.
- 5+06 ~ Remove Catch Basin, Lt.
- 5+06 - 5+13 ~ Remove Concrete Sidewalk, Lt.
- 5+13 ~ Req'd. No. 12 Concrete Inlet, Lt. (H-3'-0"). Extend 8" Sewer Pipe 8 Ft.

NOTE: For Projected Line Change Sta. 6+35.2 to Sta. 18+13.8 BK. See Sheet No. 13 Profile and Grade Line on this sheet for Projected Line Change. See Sec. 28, T8N, R32W.

FORCE ACCOUNT (G.B. & Q. Forces) 10+ to 14+ Req'd. R.R. Grade Crossing and Relocate Relay Box.

- 7+40 - 10+20 ~ Remove Fence on E.
- 7+50 ~ Req'd. 22" x 13" x 40" Asbestos Bonded (Bit. Coated) Side Drain and Street Approach, Rt.
- 8+70 ~ Req'd. Alley Approach, Lt.
- 7+ to 17+ ~ Req'd. Timber Guard Posts, Rt. & Lt. 10' Spacing.
- 10+42 ~ Req'd. Street Approach, Lt.
- 10+90 ~ Remove Concrete Sidewalk, Lt.
- 11+70 - 17+30 ~ Req'd. Combination Wire Fence with Metal Posts, Lt.
- 11+ to 17+ Remove Trash and car bodies, Rt. & Lt.
- 12+47 ~ Req'd. Street Approach, Lt.
- 12+80 ~ Remove Concrete Sidewalk, Lt.
- 14+55 ~ Req'd. Manhole Ring and Cover. Adjust Manhole, Rt.
- 14+88 ~ Adjust Manhole Ring and Cover, Lt.
- 17+54 ~ Req'd. Street Approach, Rt. & Lt.

STATE FORCES 9+ Req'd. R.R. Advance Warning Sign, Rt.

STATE FORCES 14+ Req'd. R.R. Advance Warning Sign, Lt.

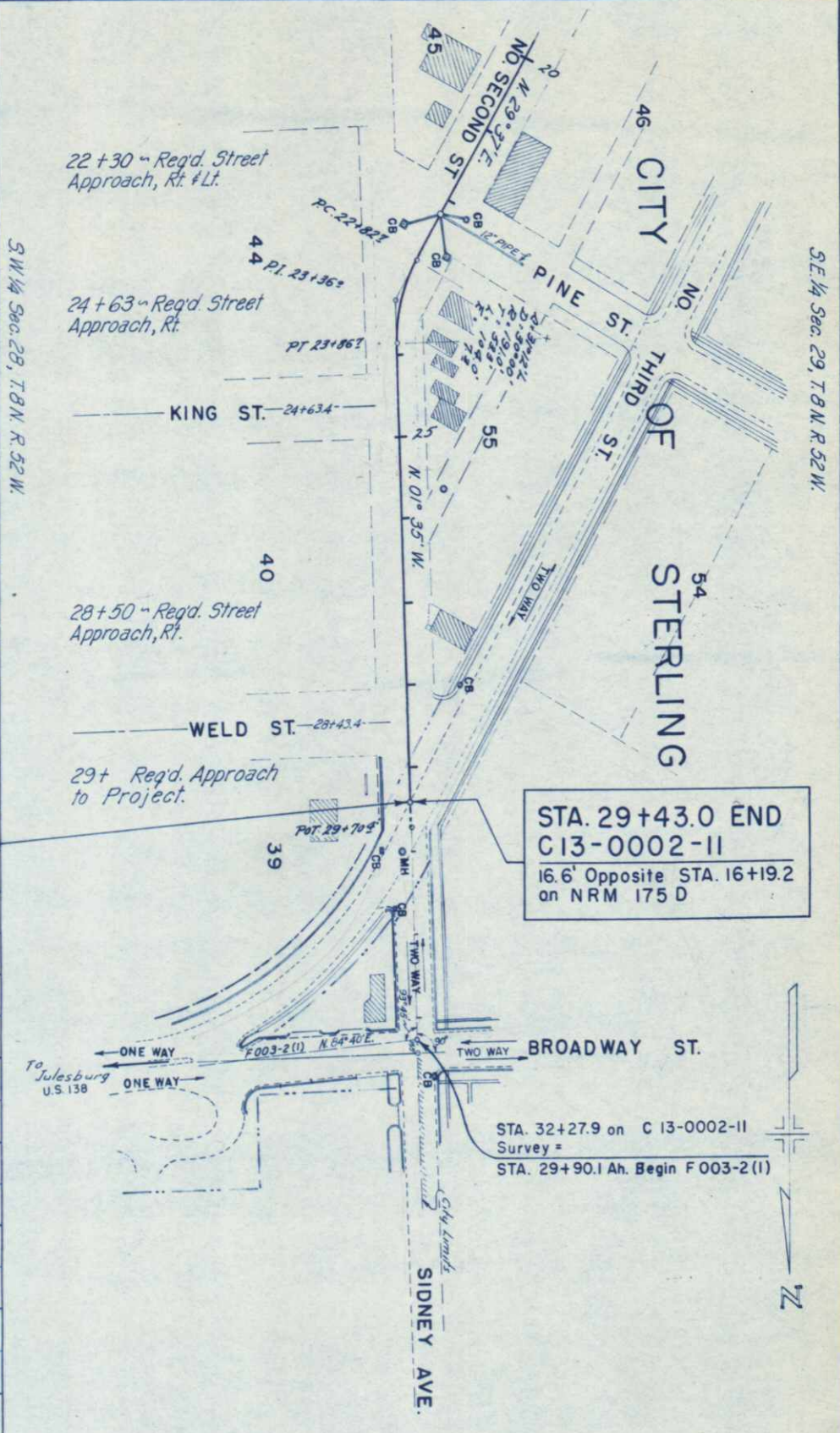
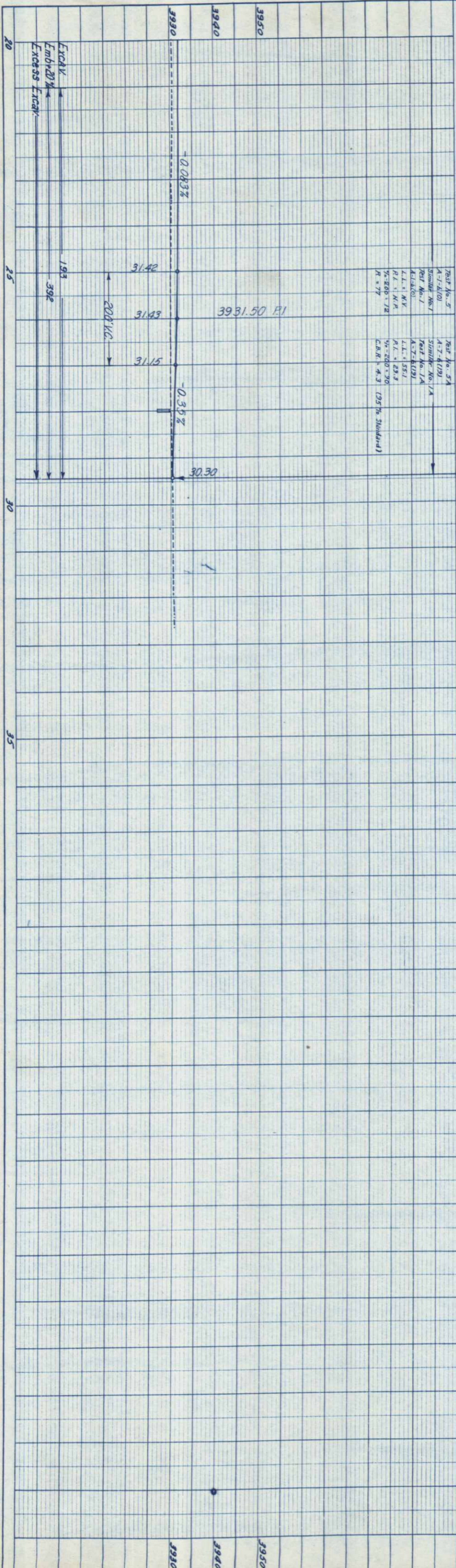
5-Reflectorized Crossbuck Signs Sta. 10+40 - Rt. 11+00 - Lt. 11+35 - Rt. 12+15 - Lt. 12+35 - Rt.

EQUATION PT 18+13.8 BK. (Proj.) = 18+11.4 AH. (Survey)

Rev. 1-11-57, J.C.R.

FEED ROAD DIST. NO.	DIST.	PROJ. NO.	SHEET NO.	TOTAL SHEETS
9	COLO.	C-13-0002-11	14	

PLATE 1 - PLAN PROFILE C. B. & Q. STATIONS



STA. 29+43.0 END  
C13-0002-II  
16.6' Opposite STA. 16+19.2  
on NRM 175 D

STA. 32+27.9 on C13-0002-II  
Survey =  
STA. 29+90.1 Ah. Begin F003-2(I)

### SUMMARY OF EARTHWORK QUANTITIES

<b>EXCAVATION</b>	
FROM CROSS SECTIONS	2,947 CU. YDS.
ESTIMATED FOR SUBSIDENCE	295 CU. YDS.
EXCAVATION FROM LIST OF STRUCTURES	310 CU. YDS.
* EMBANKMENT FROM LIST OF STRUCTURES	15 CU. YDS.
<b>TOTAL</b>	<b>3,567 CU. YDS.</b>
<b>EMBANKMENT</b>	
FROM CROSS SECTIONS	637 CU. YDS.
<b>* EMBANKMENT X FACTOR</b>	<b>764 CU. YDS.</b>
EXCESS EXCAVATION	2,183 CU. YDS.
<b>COMPACTION</b>	
* FROM EXCAVATION & EMBANK. X FACTOR	779 CU. YDS.
FROM BASE OF CUT & FILLS	6,043 CU. YDS.
<b>TOTAL</b>	<b>6,822 CU. YDS.</b>

FED. ROAD DIST. NO.	DIST.	PROJ. NO.	SHEET NO.	TOTAL SHEETS
9	COLO.	C13-0002-II	15	