

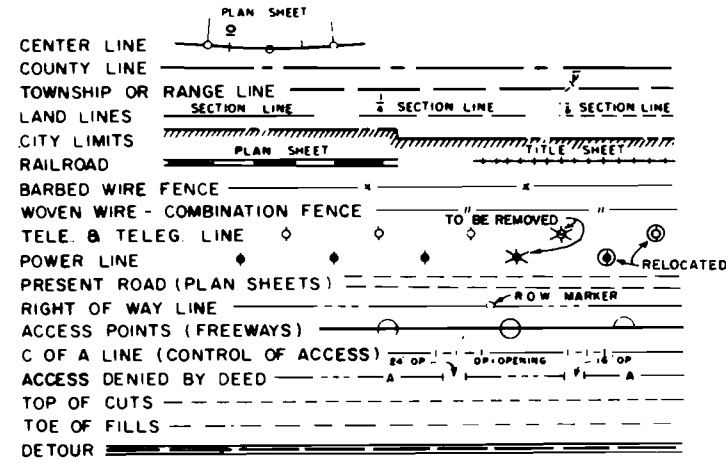
# STATE DEPARTMENT OF HIGHWAYS DIVISION OF HIGHWAYS—STATE OF COLORADO

FEDERAL ROAD REGION NO.	DIVISION	PROJECT NO.	SHEET NO.
9	COLORADO	C-40-0092-04	1

RIGHT OF WAY  
BLUE MESA DAM—NW

REVISIONS	

### CONVENTIONAL SIGNS



## PLAN AND PROFILE OF PROPOSED FEDERAL AID PROJECT NO. C-40-0092-04 STATE HIGHWAY NO. 92 GUNNISON COUNTY RIGHT OF WAY

#### SCALE OF ORIGINAL DRAWINGS

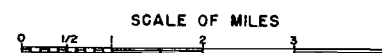
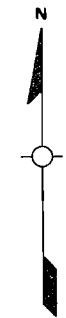
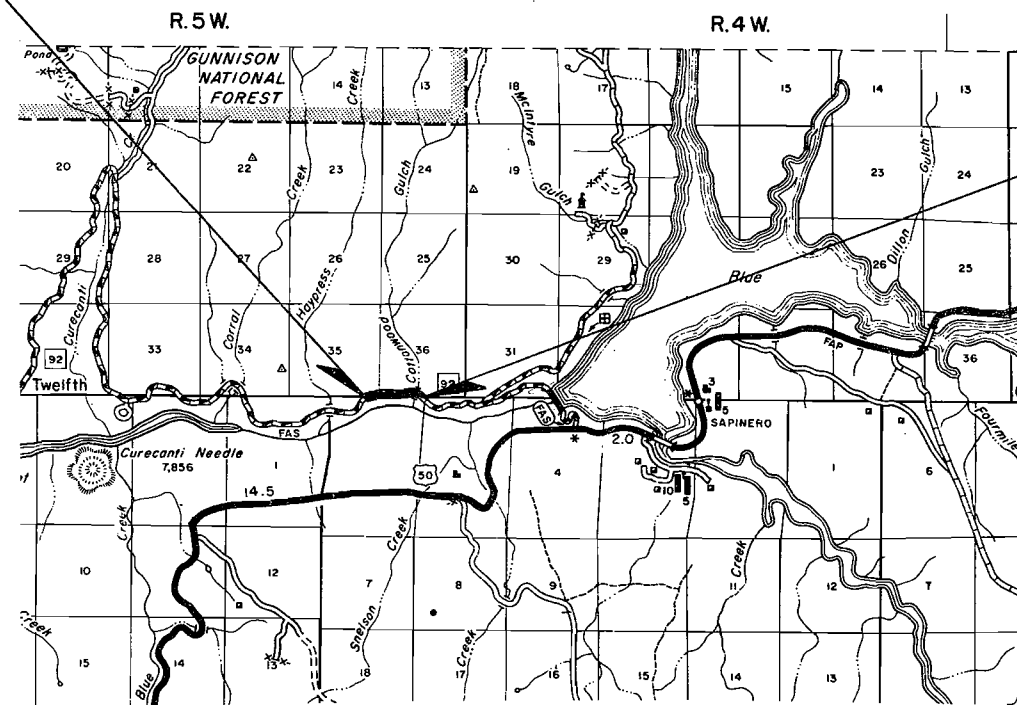
PLAN SHEETS 1" = 100'  
DETAIL SHEETS 1" =  
OWNERSHIP MAPS 1" =

R.O.W. LENGTH OF PROJECT = 0.739 miles

SHEET NO.	INDEX OF SHEETS
1	TITLE SHEET
2	TABULATION OF OWNERSHIP
3-4	ALIGNMENT SHEETS

**BEGIN R.O.W. PROJ. C-40-0092-04**  
STA. 180+98.7-PROJ. S 0125 (2)

**END R.O.W. PROJ. C-40-0092-04**  
STA. 144+53.8-PROJ. S 0125 (2)



FILE COPY  
Do Not Remove





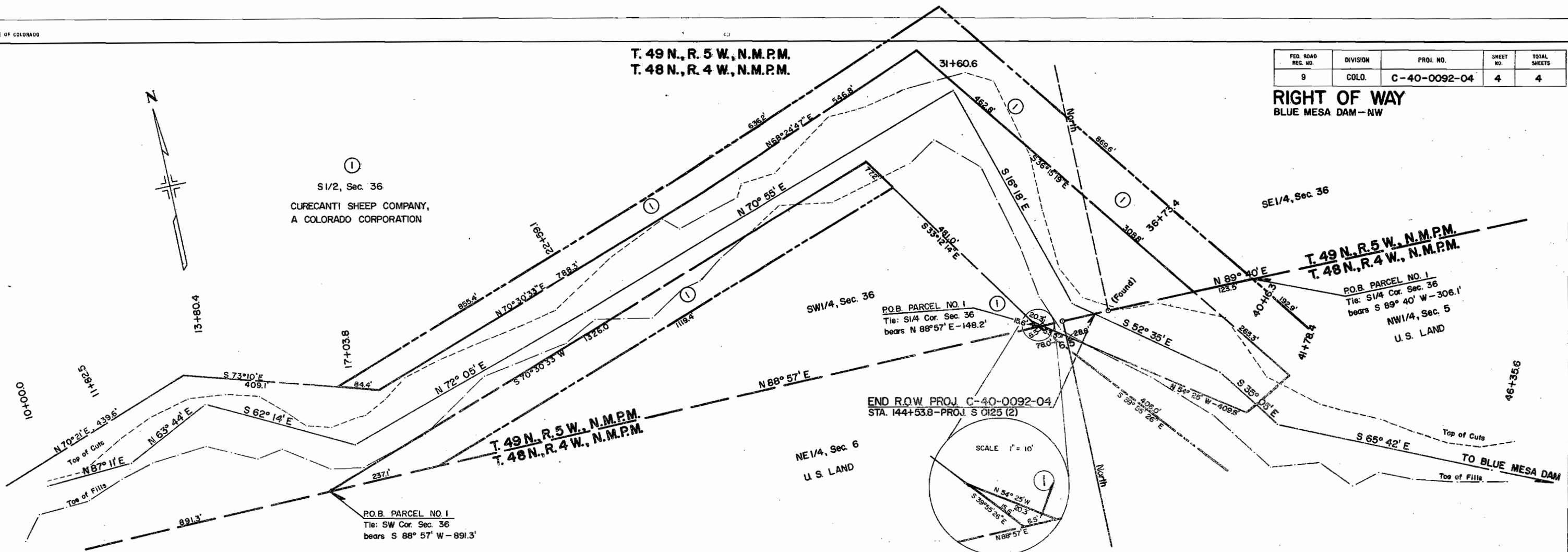
T. 49 N., R. 5 W., N.M.P.M.  
 T. 48 N., R. 4 W., N.M.P.M.

FED. ROAD REG. NO.	DIVISION	PROJ. NO.	SHEET NO.	TOTAL SHEETS
9	COLO.	C-40-0092-04	4	4

**RIGHT OF WAY**  
 BLUE MESA DAM-NW



①  
 S1/2, Sec. 36  
 CURECANTI SHEEP COMPANY,  
 A COLORADO CORPORATION



PLAN  
 SURVEYED  
 NOTE BOOK ALIGNED CHECKED  
 RT. OF WAY CHECKED  
 NO.

PROFILE  
 SURVEYED  
 GRADES CHECKED  
 B. M. NOTED  
 STRUCTURE NOTATION

