

Design

# STATE DEPARTMENT OF HIGHWAYS DIVISION OF HIGHWAYS—STATE OF COLORADO

FEDERAL ROAD REGION NO.	DIVISION	PROJECT NO.	SHEET NO.
VIII	COLORADO	C 40-0135-14	1

RIGHT OF WAY  
SOUTH OF CRESTED BUTTE

REVISIONS	

## PLAN AND PROFILE OF PROPOSED FEDERAL AID PROJECT NO. C 40-0135-14 STATE HIGHWAY NO. 135 GUNNISON COUNTY RIGHT OF WAY

SCALE OF ORIGINAL DRAWINGS

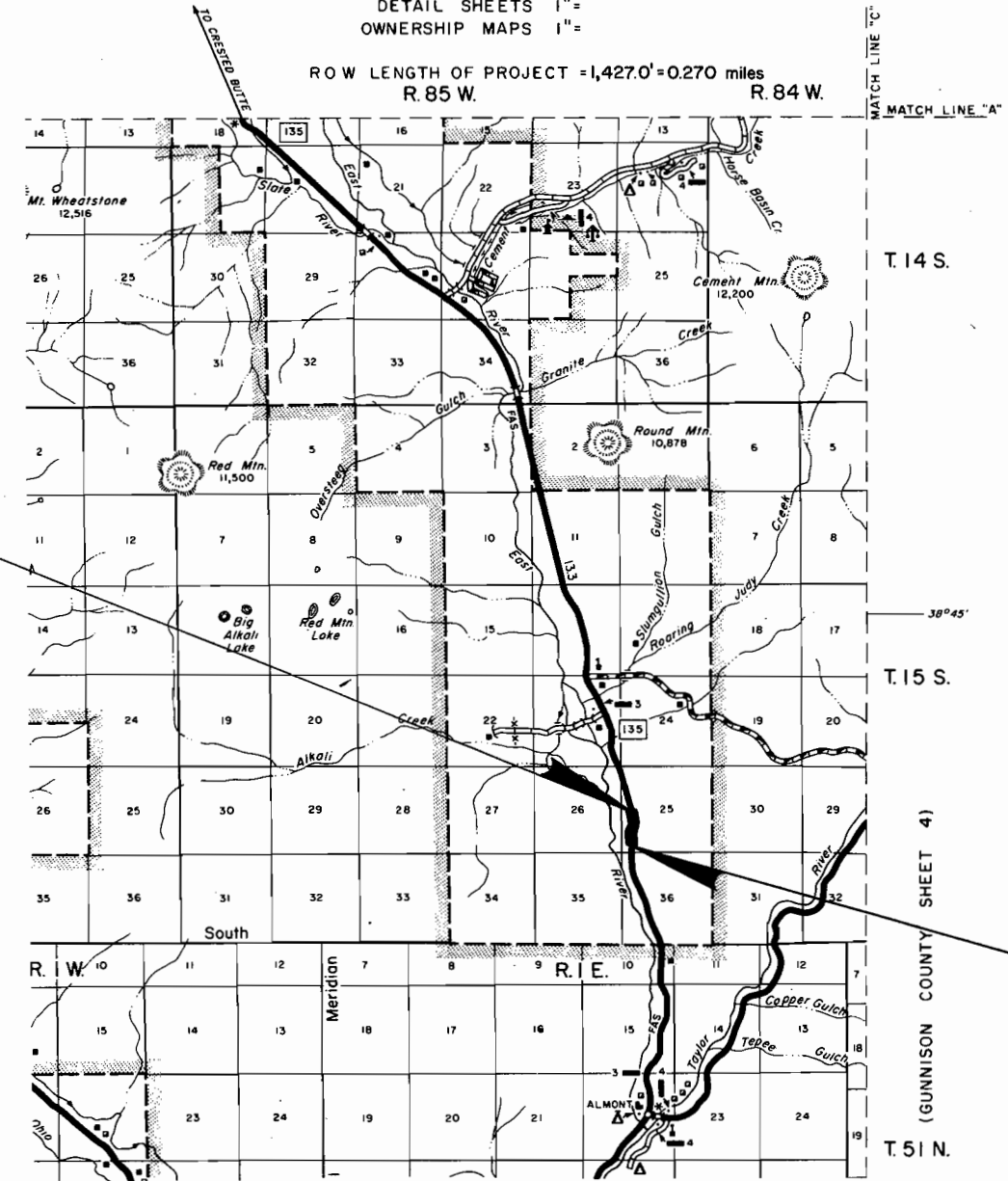
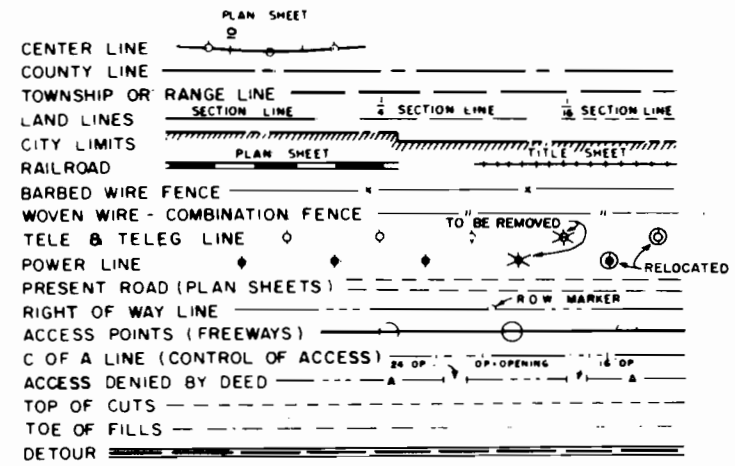
PLAN SHEETS 1" = 50'  
DETAIL SHEETS 1" =  
OWNERSHIP MAPS 1" =

ROW LENGTH OF PROJECT = 1,427.0' = 0.270 miles  
R. 85 W. R. 84 W.

INDEX OF SHEETS

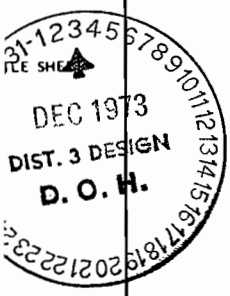
SHEET NO.	DESCRIPTION
1	TITLE SHEET
2	TABULATION OF PROPERTIES SHEET
3-4	ALIGNMENT SHEETS

### CONVENTIONAL SIGNS



END R.O.W. PROJ. C 40-0135-14 Sta. 21+85.23  
Approx. Sta. 745+37.82 Proj. S 0119 (4)

BEGIN R.O.W. PROJ. C 40-0135-14 Sta. P.O.S.T. 7+58.23  
Approx. Sta. 730+51.92 Proj. S 0119 (4)







T. 15 S., R. 85 W., 6th P.M.

FEDERAL ROAD REGION NO.	DIVISION	PROJ. NO.	SHEET NO.	TOTAL SHEETS
VIII	COLORADO	C 40-0135-14	4	4

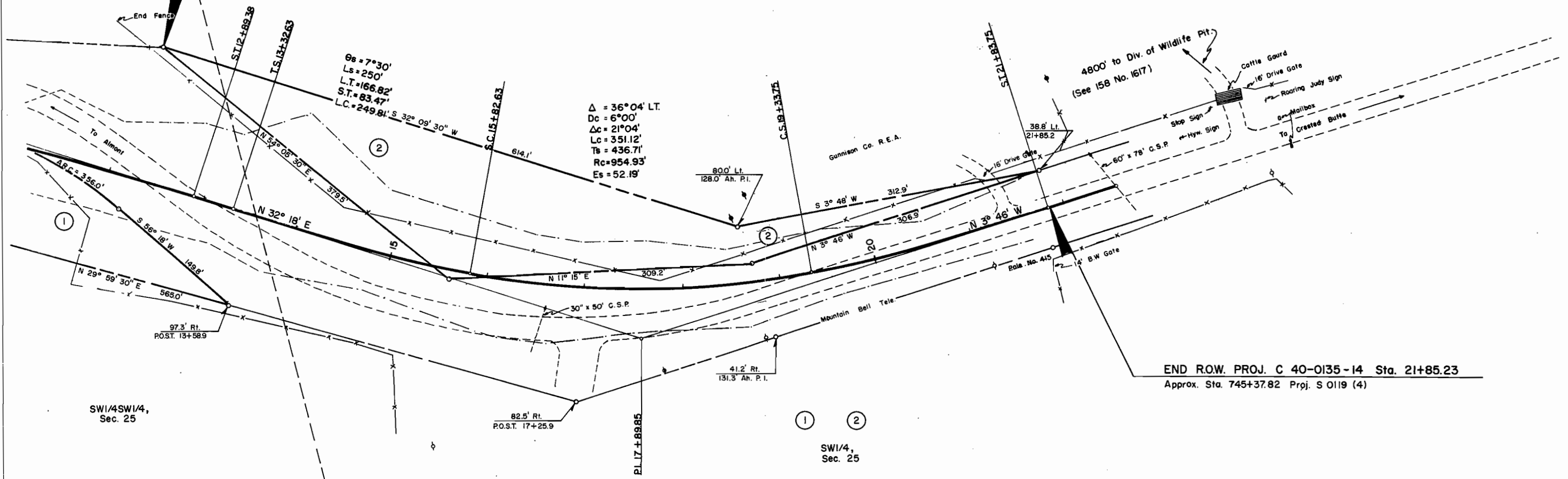
**RIGHT OF WAY**  
 SOUTH OF CRESTED BUTTE  
 Scale: 1"=50'

REVISIONS	



PO.B. 2  
 Tie: S1/4 Cor. Sec. 26  
 bears S 66° 10' 30" W  
 3,263.3'  
 138.5' Lt.  
 349.6' Ah. P.I.

NW1/4SW1/4,  
 Sec. 25



$\Delta = 36^{\circ}04' \text{ LT.}$   
 $Dc = 6^{\circ}00'$   
 $\Delta c = 21^{\circ}04'$   
 $Lc = 351.12'$   
 $Ts = 436.71'$   
 $Rc = 954.93'$   
 $Es = 52.19'$

END R.O.W. PROJ. C 40-0135-14 Sta. 21+85.23  
 Approx. Sta. 745+37.82 Proj. S 0119 (4)

SW1/4SW1/4,  
 Sec. 25

SW1/4,  
 Sec. 25  
 Colorado Game and Fish Commission