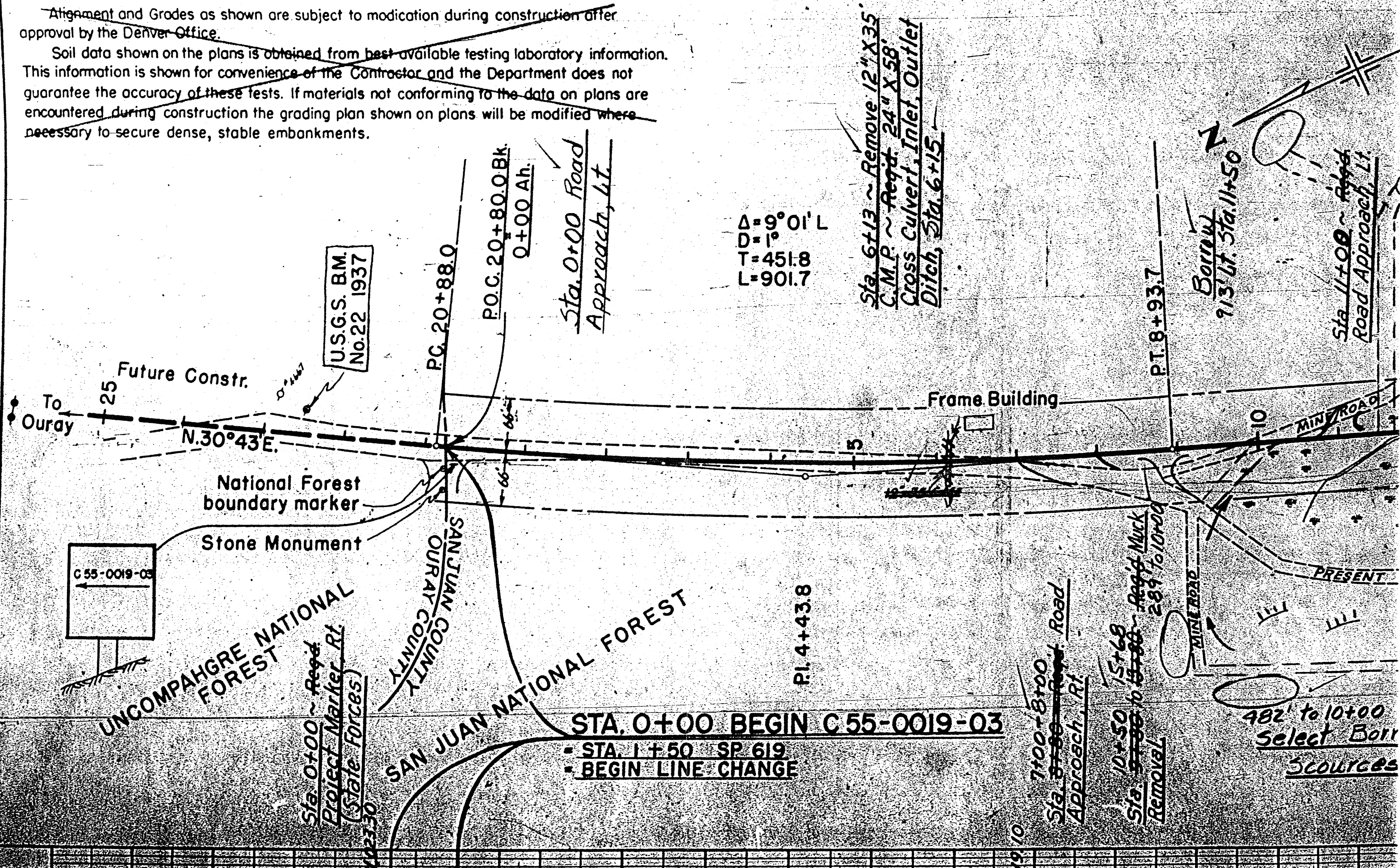


NOTE:

Alignment and Grades as shown are subject to modification during construction after approval by the Denver Office.

Soil data shown on the plans is obtained from best available testing laboratory information. This information is shown for convenience of the Contractor and the Department does not guarantee the accuracy of these tests. If materials not conforming to the data on plans are encountered during construction the grading plan shown on plans will be modified where necessary to secure dense, stable embankments.



U.S.G.S. B.M.  
No. 22 1937

C 55-0019-03

STA. 0+00 BEGIN C 55-0019-03

- STA. 1+50 SP 619
- BEGIN LINE CHANGE

Sta. 6+13 ~ Remove 12" X 35"  
C.M.P. ~ Req'd. 24" X 58"  
Cross Culvert, Inlet, Outlet  
Ditch, Sta. 6+15

Borrow  
713' Lt. Sta. 11+50

Sta. 11+00 ~ Req'd.  
Road Approach Lt.

7100-8100  
Sta. 8+80 ~ Req'd. Road  
Approach, Rt.

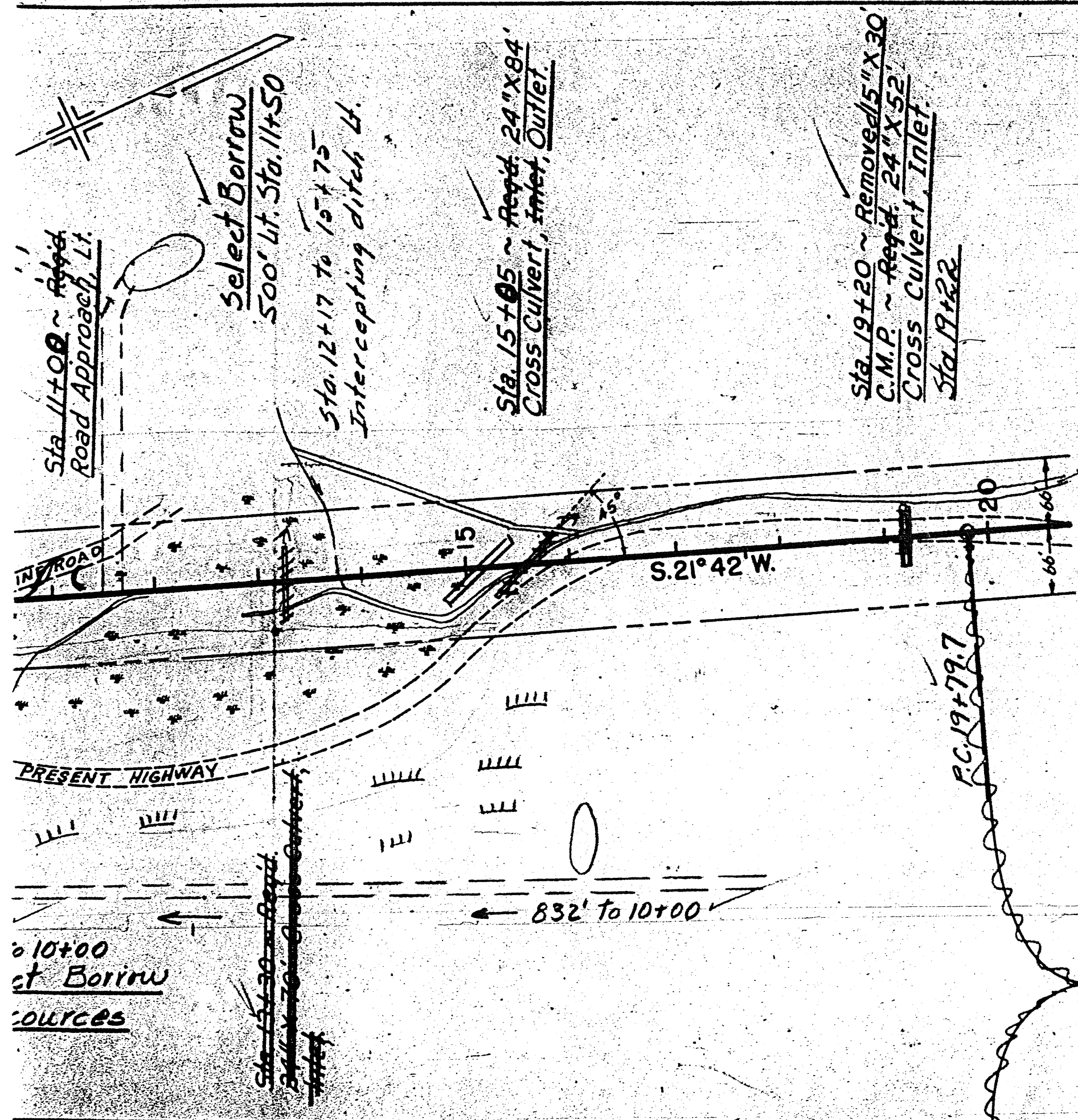
Sta. 10+50 ~ Req'd. Muck  
Removal  
289' to 10+00

482' to 10+00  
Select Borr  
Sources

| FED. ROAD DIST. NO. | DIST. | PROJ. NO.   | SHEET NO. | TOTAL SHEETS |
|---------------------|-------|-------------|-----------|--------------|
| 9                   | COLO. | C55-0019-03 | 13        |              |

LINE CHANGE

FINAL CONSTRUCTION SHEET



See Sheet 13b (Line Change Cont'd.)  
To Silverton →

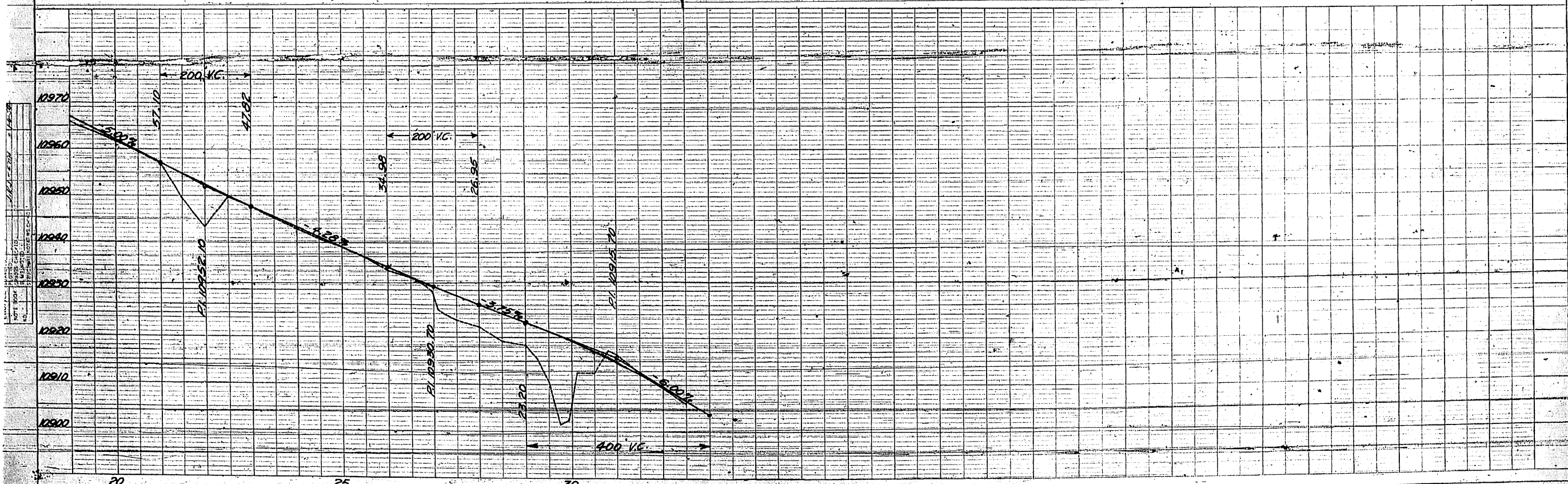
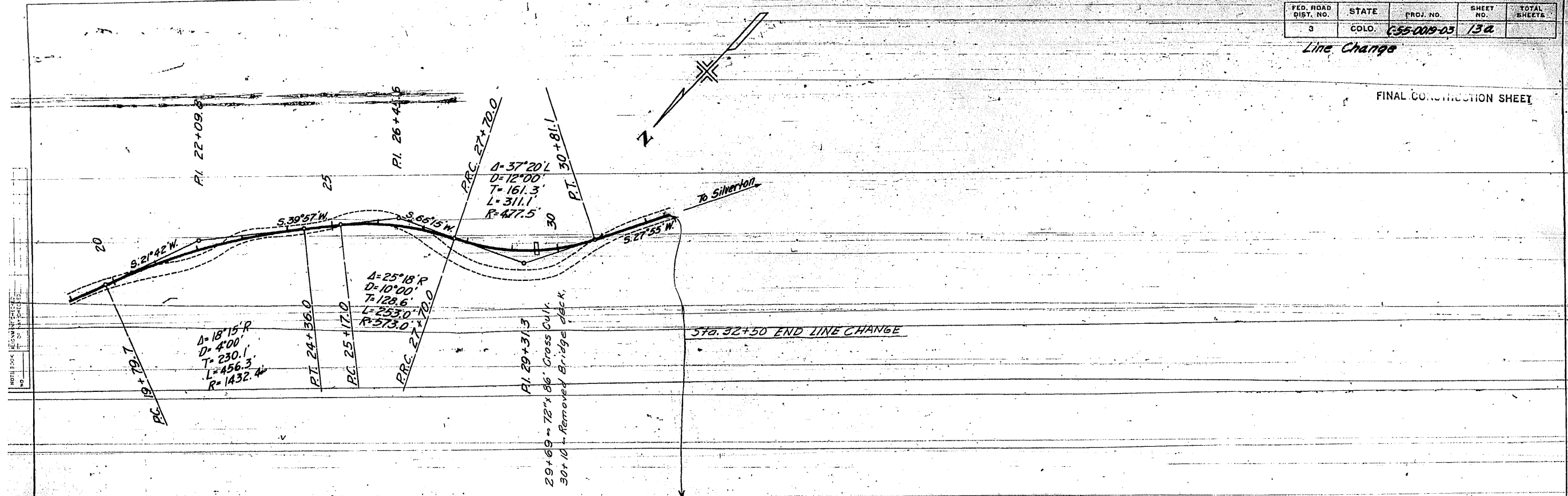
32+50  
~~19+80~~ END LINE CHANGE

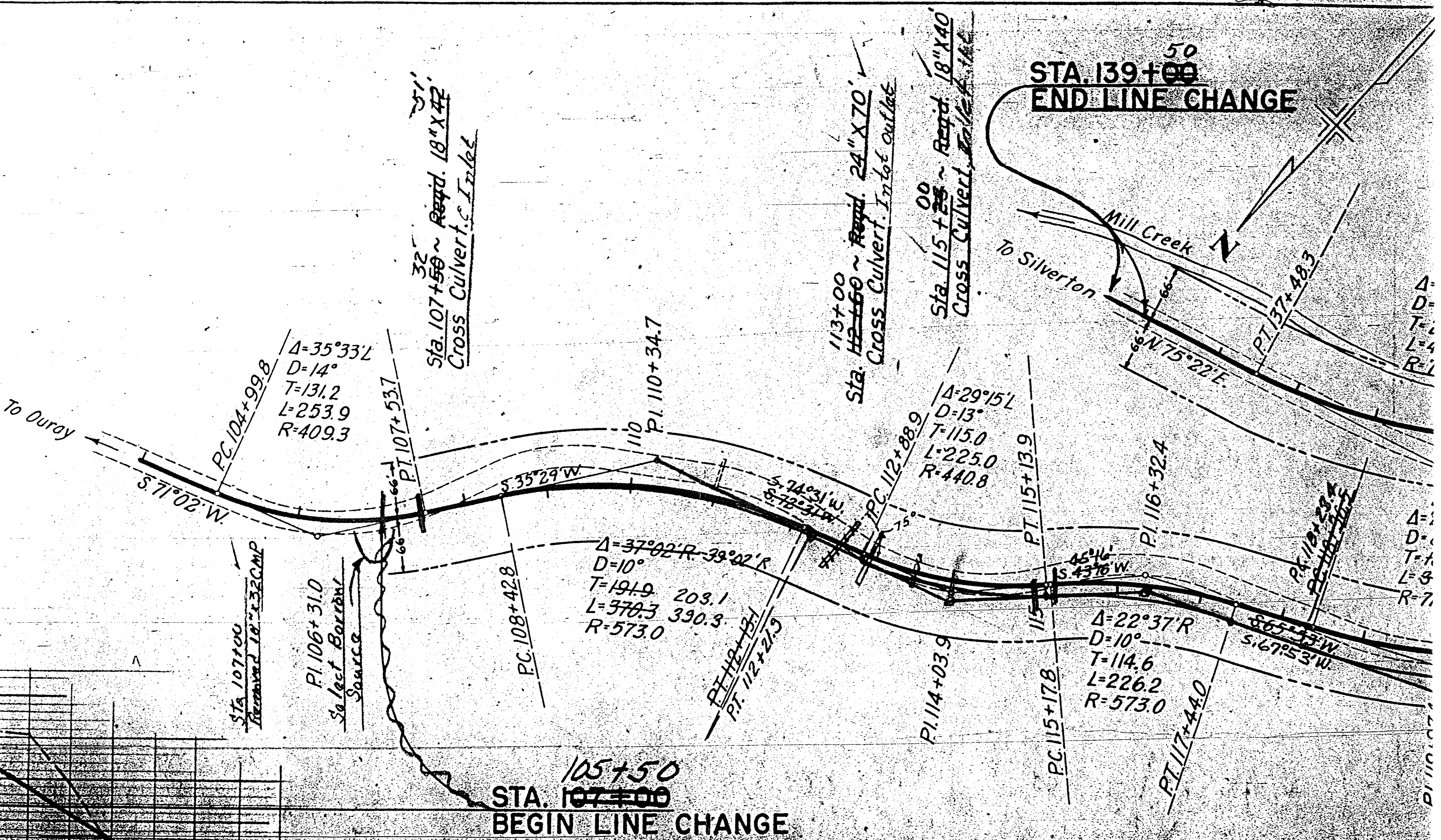
CLEARING & GRUBBING  
Sta. 0+00 to Sta. 19+80 ~ No Clearing ✓

| FED. ROAD DIST. NO. | STATE | PROJ. NO.    | SHEET NO. | TOTAL SHEETS |
|---------------------|-------|--------------|-----------|--------------|
| 3                   | COLO. | C-55-0019-05 | 13a       |              |

Line Change

FINAL CONSTRUCTION SHEET





To Oroy

To Silverton

50  
**STA. 139+00**  
**END LINE CHANGE**

105+50  
**STA. 107+00**  
**BEGIN LINE CHANGE**

PC 104+99.8  
 $\Delta = 35^\circ 33' L$   
 $D = 14'$   
 $T = 131.2$   
 $L = 253.9$   
 $R = 409.3$

31'  
 32'  
 Sta. 107+50 ~ Req'd. 18" X 42"  
 Cross Culvert, Inlet

113+00  
 Sta. 113+60 ~ Req'd. 24" X 70"  
 Cross Culvert, Inlet outlet

00  
 Sta. 115+25 ~ Req'd. 18" X 40"  
 Cross Culvert, Inlet

$\Delta = 37^\circ 02' R - 39^\circ 02' R$   
 $D = 10'$   
 $T = 191.9 \quad 203.1$   
 $L = 370.3 \quad 390.3$   
 $R = 573.0$

PC 112+88.9  
 $\Delta = 29^\circ 15' L$   
 $D = 13'$   
 $T = 115.0$   
 $L = 225.0$   
 $R = 440.8$

PC 115+17.8  
 $\Delta = 22^\circ 37' R$   
 $D = 10'$   
 $T = 114.6$   
 $L = 226.2$   
 $R = 573.0$

Sta 107+00  
 Req'd 18" X 32" CMP

PI 106+31.0  
 Select Barron's  
 Source

PC 108+42.8

PT 112+13.1  
 PT 112+21.9

PI 114+03.9

PT 115+13.9

PI 116+32.4

PT 117+44.0

PT 118+23.4  
 PC 119+11.5

$\Delta =$   
 $D =$   
 $T =$   
 $L =$   
 $R =$

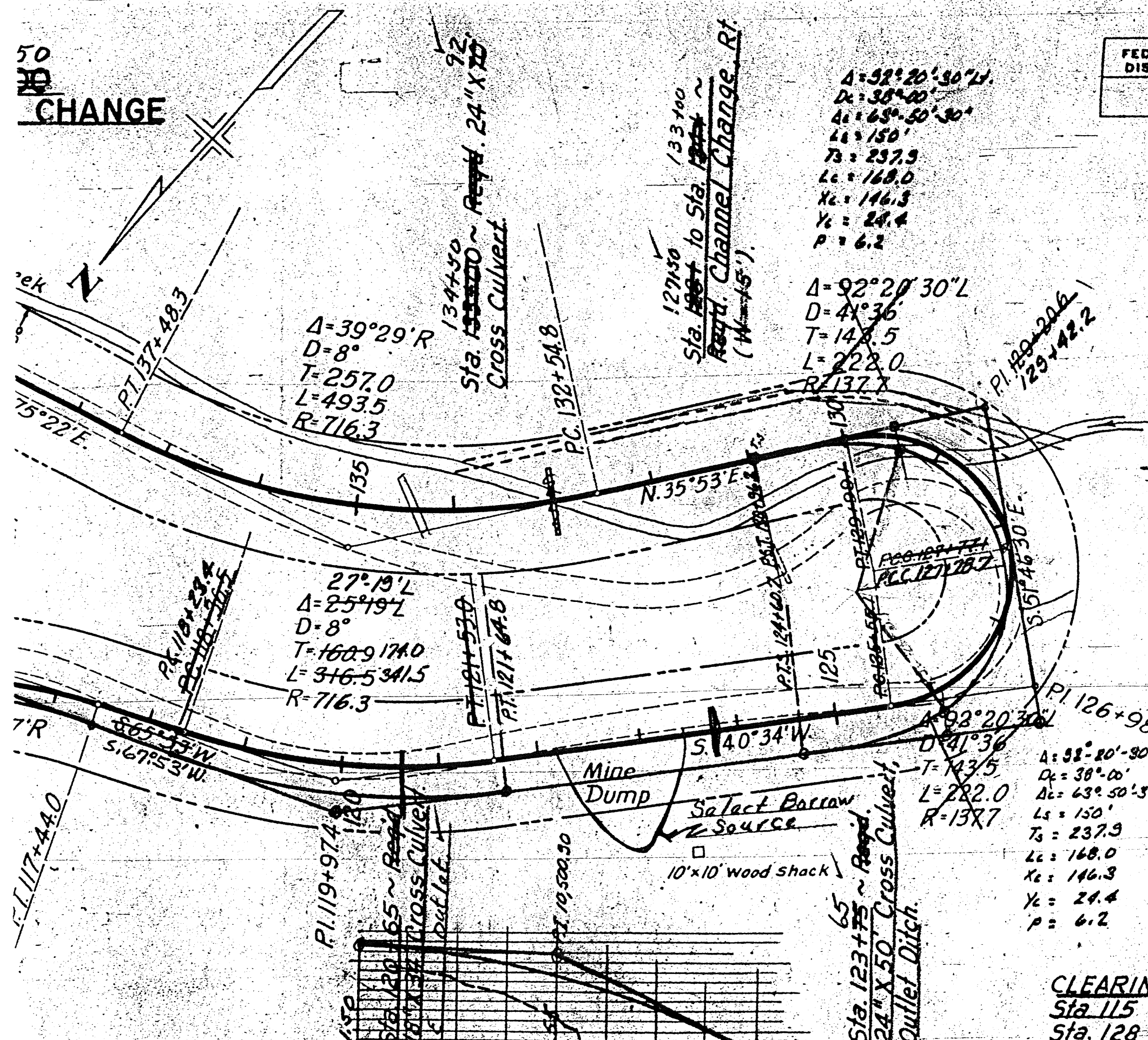
$\Delta =$   
 $D =$   
 $T =$   
 $L =$   
 $R =$

$\Delta =$   
 $D =$   
 $T =$   
 $L =$   
 $R =$

50  
~~30~~  
**CHANGE**

| FED. ROAD DIST. NO. | DIST. | PROJ. NO.    | SHEET NO. | TOTAL SHEETS |
|---------------------|-------|--------------|-----------|--------------|
| 9                   | COLO. | G 55-0019-03 | 14        |              |

FINAL CONSTRUCTION SHEET



$\Delta = 92^{\circ} 20' 30'' L$   
 $D = 38^{\circ} 00'$   
 $\Delta_c = 63^{\circ} 50' 30''$   
 $L_s = 150'$   
 $T_s = 237.9$   
 $L_c = 168.0$   
 $X_c = 146.3$   
 $Y_c = 24.4$   
 $P = 6.2$

$\Delta = 92^{\circ} 20' 30'' L$   
 $D = 41^{\circ} 36'$   
 $T = 143.5$   
 $L = 222.0$   
 $R = 137.7$

$\Delta = 39^{\circ} 29' R$   
 $D = 8^{\circ}$   
 $T = 257.0$   
 $L = 493.5$   
 $R = 716.3$

$27^{\circ} 19' L$   
 $\Delta = 25^{\circ} 19' L$   
 $D = 8^{\circ}$   
 $T = 160.9$   
 $L = 316.5$   
 $R = 716.3$

$\Delta = 92^{\circ} 20' 30'' L$   
 $D = 41^{\circ} 36'$   
 $T = 143.5$   
 $L = 222.0$   
 $R = 137.7$

$\Delta = 92^{\circ} 20' 30'' L$   
 $D = 38^{\circ} 00'$   
 $\Delta_c = 63^{\circ} 50' 30''$   
 $L_s = 150'$   
 $T_s = 237.9$   
 $L_c = 168.0$   
 $X_c = 146.3$   
 $Y_c = 24.4$   
 $P = 6.2$

-127+00 Road  
 Appr. Re

**CLEARING & GRUBBING**  
 Sta 115 to Sta 125 ~ Light Willows.  
 Sta. 128 to Sta. 136 ~ Medium Willows and Spruce.