

INACTIVE

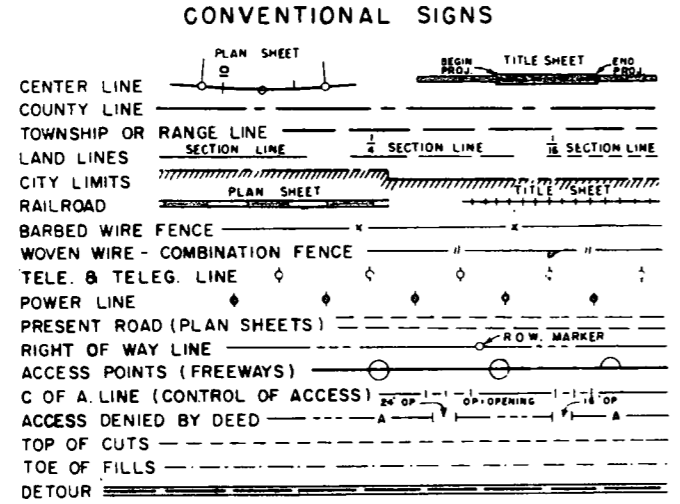
DEPARTMENT OF HIGHWAYS
STATE OF COLORADO

NOV 2 1967

FEDERAL ROAD REGION NO.	DIVISION	PROJECT NO.	SHEET NO.
9	COLORADO	C 56-0019-18	1

OURAY - Main Street Rev. 6-10-66-JWK-RD

INDEX OF SHEETS AS CONSTRUCTED
REVISED 10-19-66



PLAN AND PROFILE OF PROPOSED
FEDERAL AID PROJECT NO. C 56-0019-18
STATE HIGHWAY NO. 19
OURAY COUNTY

- SHEET NO
1. Sketch Map, Title Sheet and Tabulation of Length & Design Data.
 - 2X 2. Typical Section, General Notes and Summary of Approximate Quantities.
 - 3X-3AX. Structure Quantities:
 - 4X 4. Subbase Plan, Surfacing Plan, Summary of Earthwork Quantities and Details for Connecting Drop Inlets to C.B.C.'s.
 - 5X 5. Pit Sketch and Tabulations of Curb, Gutter and Sidewalk.
 6. ~~Details of Amphitheater Road and Campground.~~
 - 7-9. Alignment Plan & Profile.

SCALES OF ORIGINAL DRAWINGS
ON PLAN, 1 IN. = 50 FT.
ON PROFILE, 1 IN. = 50 FT. HORIZONTAL
1 IN. = 10 FT. VERTICAL
GRADE LINE ON PROFILE IS SHOWN AS GRADE OF FINISHED ROAD

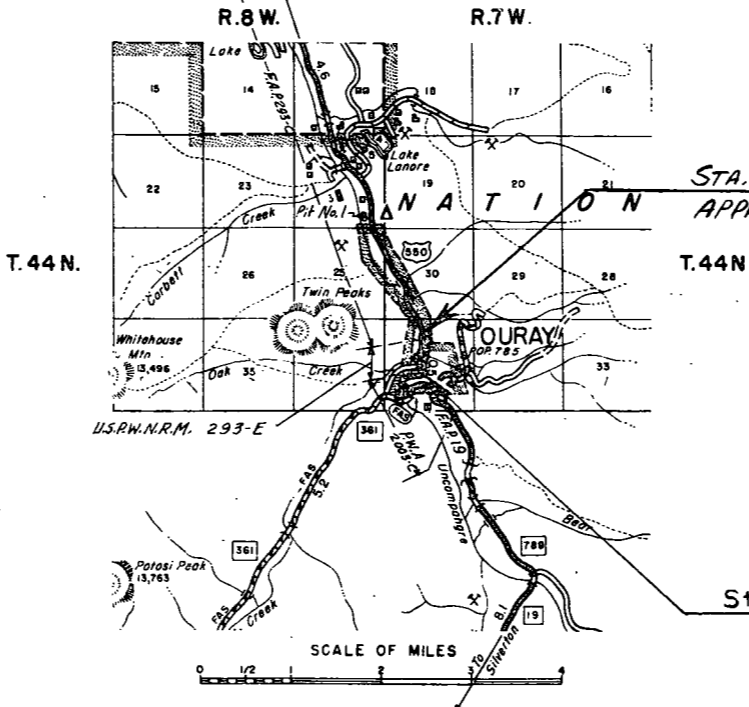
CONTRACTOR: C.E.MILLS CONSTRUCTION CO.
PROJECT ENGR: PAUL M. SCHMID
DATE COMPLETED: OCT. 19, 1966

TABULATION OF LENGTH AND DESIGN DATA

STATION	ROADWAY	
	Lin. Ft.	MILES
0+00 = Begin C 56-0019-18 = P.O.S.T. 77+38 on P.W.A. 2003-C BEGIN CONSTR.	3150.0	0.597
END CONSTR. 31+50 = End C 56-0019-18 = APPROX STA. 16+70 on Former F.A.P 293-C		
TOTALS (NET & GROSS LENGTH)	3150.0	0.597

DESIGN DATA

Maximum Grade	7.5%
Maximum Degree of Curve	0°00'
Minimum S.S.D.-Horizontal	City Street
Minimum S.S.D.-Vertical	City Street
Maximum Design Speed	City Street



STA. 31+50 End Proj C 56-0019-18 =
APPROX. STA. 16+70 on F.A.P. 293 C
END CONSTRUCTION

BEGIN CONSTRUCTION
Sta. 0+00 = Begin Proj C 56-0019-18
= P.O.S.T. 77+38 on P.W.A. 2003-C

- (R1) 10x19x Cross Sections.
20x28x Structure Sheets
- M-6-BA Traffic Signing for Highway Construction (3 sheets) (2-1-65)
 - M-13-A Ditch Types (2-3-64)
 - M-16-A Backfill Around Structures (1-31-64)
 - M-45-B Culvert Pipe (4-16-65)
 - M-46-A No. 12 & No. 13 Concrete Inlets (2-1-65)
 - M-84-A Curbs & Gutters (8-24-64)
 - M-142-AA Timber Barricades (2-1-65)

SEE SPECIAL PROVISIONS FOR NOTICE TO BIDDERS

DEPARTMENT OF HIGHWAYS
STATE OF COLORADO

APPROVED: *E. E. Shumate* 5-19-66
CHIEF ENGINEER DATE

By *L. B. Bowen* Deputy Chief Engineer

DEPARTMENT OF COMMERCE
BUREAU OF PUBLIC ROADS

APPROVED: _____ DATE _____

DIVISION ENGINEER

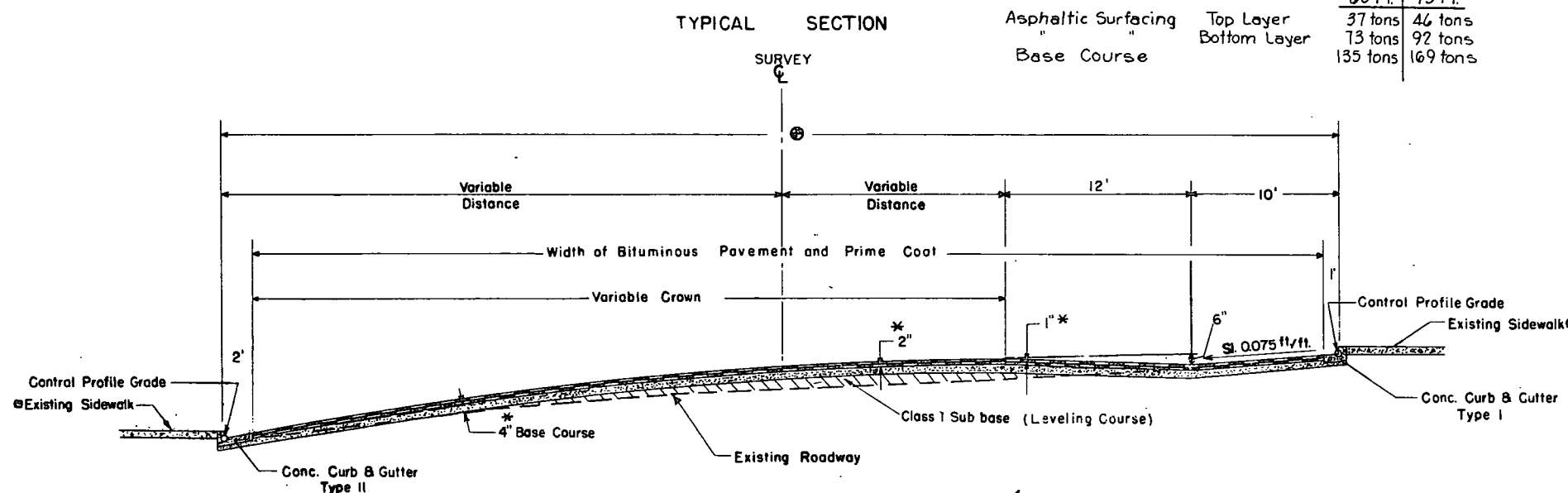
Approximate Compacted Thickness of Gravel or Crushed Rock Surfacing shall be placed in separate courses at the following rates per 100 lin. ft. of Roadway:

Roadway	
60 Ft.	75 Ft.
37 tons	46 tons
73 tons	92 tons
135 tons	169 tons

FEDERAL ROAD REGION NO.	DISTRICT	PROJ. NO.	SHEET NO.	TOTAL SHEETS
9	COLORADO	C 56-0019-18	2	

OURAY - MAIN STREET

AS CONSTRUCTED
REVISED DATE 10-19-66



⊕ STA. 0+00 to STA. 6+40 - 60' Section
 STA. 6+40 to STA. 26+40 - 75' Section
 STA. 26+40 to STA. 31+50 - Transition to 50' Existing Street Section

⊕ Portions of Existing Sidewalk to be Removed & Replaced. See Curb & Gutter Tabulation
 * Approximate Thickness

GENERAL NOTES

This Project Is To Be Constructed In Conformity With The Standard Specifications Of The Colorado Department Of Highways, Adopted January 1, 1958.

All Quantities On Preliminary Plans Are To Be Considered Approximate Only.

For Preliminary Plan & Estimate The Following Rates Were Used.

Base Course Surfacing &	135 lbs/cu. ft.
Subbase Cl. I	
Plant Mix	109.4 lbs/Sq. Yd./Inch
Paving Asphalt	6% by wt. of P.M.
Prime Coat M.G.	0.4 gal./Sq. Yd.

Rate of Application And Grade of Asphaltic Material Shall Be As Determined By The Engineer At The Time Of Application.

During Construction Of This Project Traffic Will Use Present Traveled Roadway.

Bottom Layer of Asphaltic Surfacing Shall be completed for full width before Top Layer of Asphaltic Surfacing is placed.

Paving Joints in Top Layer will overlap min. 1 ft. over joints in Bottom Layer.

Application Methods for Liquid Asphaltic Road Material which will result in the discoloration of concrete Pavement, Curbs or Gutters will not be permitted.

Thickness of Surfacing and Asphaltic Pavement Materials as shown on plans is approximate only. These materials are to be placed on the basis of tonnage shown on plans.

SUMMARY OF APPROXIMATE QUANTITIES

ITEM NO.	ITEM	UNIT	FOREST SERVICE	CITY OF OURAY	ROADWAY	PROJECT TOTALS
6	Field Laboratory	Ea.			1	1
11	Adjust Manhole Ring & Cover	Ea.			3	3
11	Plug Culvert	Ea.			11	11
11	Remove Sidewalk	Sq. Ft.		48,410		48,410
11	Removal of Structures	Ea.			3	3
13	Stripping	Cu. Yd.			1000	1000
13	Unclassified Excavation	Cu. Yd.			3000	3000
13	Unclassified Ditch Excavation	Cu. Yd.			100	100
14	Unclassified Str. Excav. - Misc.	Cu. Yd.			490	490
16	Structure Backfill (Class X)	Cu. Yd.			190	190
17	Compaction (Standard)	Cu. Yd.			1000	1000
17	Wetting	M. Gal.	50		160	210
18	Ton Mile Overhaul	ton mi	10,550		22,350	32,900
23	Subbase Material (Class I)	Ton			4200	4200
26	Gravel or Crushed Rock Surf. (Grading C)	Ton	2050		5450	7,500
29	Asphalt (120-150 Penetration) (Additive)	Ton	140		280	420
30	Asphaltic Road Material M.C. (Prime)	Gal.	7700		12,400	20,100
32	Plant Mixed Asphaltic Surfacing	Ton	2230		4640	6870
53	18" Corrugated Metal Culvert Pipe	Lin. Ft.			528	528
53	24" Corrugated Metal Culvert Pipe	Lin. Ft.			528	528
84	Conc. Comb. Curb & Gutter (Type I)	Lin. Ft.		2820		2820
84	Conc. Comb. Curb & Gutter (Type II)	Lin. Ft.		2820		2820
86	Conc. Sidewalks	Sq. Ft.		44,270		44,270
130	Drop Inlets (TYPE 12) (4-Foot)	Ea.			2	2
130	Drop Inlets (TYPE 12) (5-Foot)	Ea.			4	4
130	Drop Inlets (TYPE 13) (4-Foot)	Ea.			2	2
130	Drop Inlets (TYPE 13) (5-Foot)	Ea.			13	13
	FORCE ACCOUNT					
	Move or Adjust City Water Facilities. (Work by Town of Ouray Forces)	L.S.			•	•
	STATE FORCES					
	Signing & Striping Entire Project	L.S.			•	•

* Reimbursable by the U.S. Forest Service to the Department of Highways, State of Colorado.
 ** Reimbursable by the City of Ouray to the Department of Highways, State of Colorado.

OURAY - Main Street

AS CONSTRUCTED
REVISED DATE 10-19-66

SUMMARY OF EARTHWORK QUANTITIES

SUB BASE PLAN

STA. to STA.	SOURCE	TONS CLASS 1	TON MILE OVERHAUL
0+00 - 6+00	Gibbs PIT HAUL = 6638 FT TO STA. 31+50 R. WIDE = 80	1,103	1,982
6+00 - 26+00		2,267	3,516
26+00 - 31+50		410	539
+10% for Irregs.		378	604
TOTAL		4,158	6,641

Subbase Thickness is variable; See Cross Sections.

~~UNCLASSIFIED EXCAVATION
FROM CROSS SECTIONS 2005 Cu. Yds.~~

~~EMBANKMENT
FROM CROSS SECTIONS 300 Cu. Yds.~~

~~EMBANKMENT X FACTOR 333 Cu. Yds.~~

~~EXCESS EXCAVATION 1672 Cu. Yds.~~

~~COMPACTION
EMBANKMENT X FACTOR 333 Cu. Yds.~~

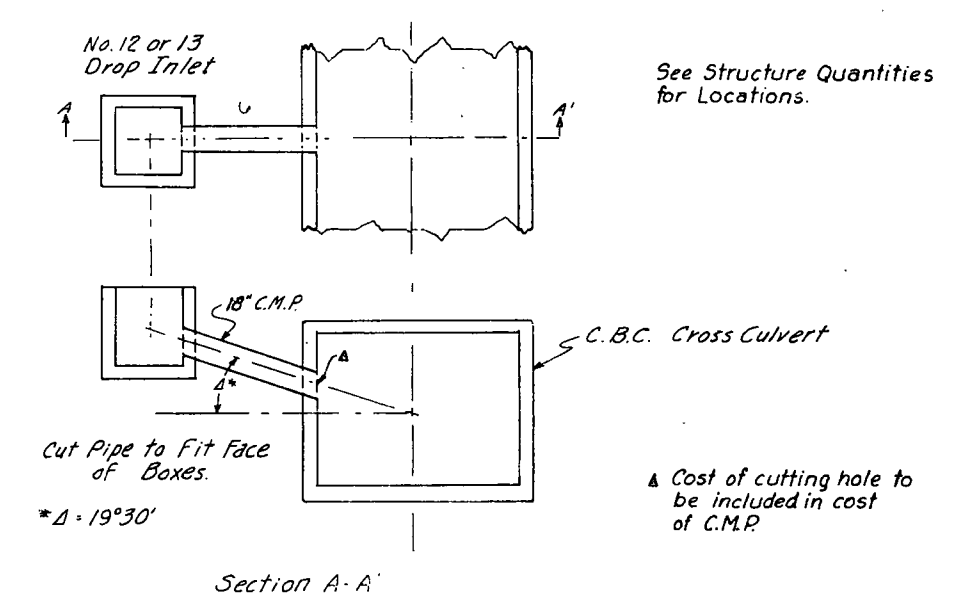
SURFACING PLAN

STA. to STA.	SOURCE	TONS				TON MILE OVERHAUL			
		BASE COURSE 4"	BASE COURSE 3" & 2"	PLANT MIX		BASE COURSE	PLANT MIX		
				BOTTOM LAYER 2"	TOP LAYER 1"		BOTTOM LAYER 2"	TOP LAYER 1"	
0+00 - 6+40	Gibbs PIT HAUL = 6638 FT TO STA. 31+50 R. WIDE = 80	864		467	233	1,549	837	418	
6+40 - 26+40		3,375		1,824	912	7,208	2,815	1,407	
26+40 - 31+50		717		388	184	940	508	254	
Side Streets		500		320		778	498		
Leveling Course					300			466	
TOTAL - ROADWAY		5,456		3,299	1,339	8,475	5,124	2,079	
U.S. Forest Service				2,043	2,231		5,031	5,493	
TOTAL	5,456	2,043	5,530	1,339	13,506	10,617	2,079		

It is estimated that material for the Subbase and Surfacing for the Project is available in the Vicinity of the Pit Indicated in the above Tabulations. Estimated quantities for these operations are shown above.

Alteration of the Subbase and Surfacing Plans will be allowed only on written permission from the Department.

DETAILS FOR CONNECTING DROP INLETS TO C.B.C.'S



FEDERAL ROAD REGION NO.	DISTRICT	PROJ. NO.	SHEET NO.	TOTAL SHEETS
9	COLORADO	C 56-0019-18	5	

OURAY-MAIN STREET

AS CONSTRUCTED
REVISED DATE 10-19-66

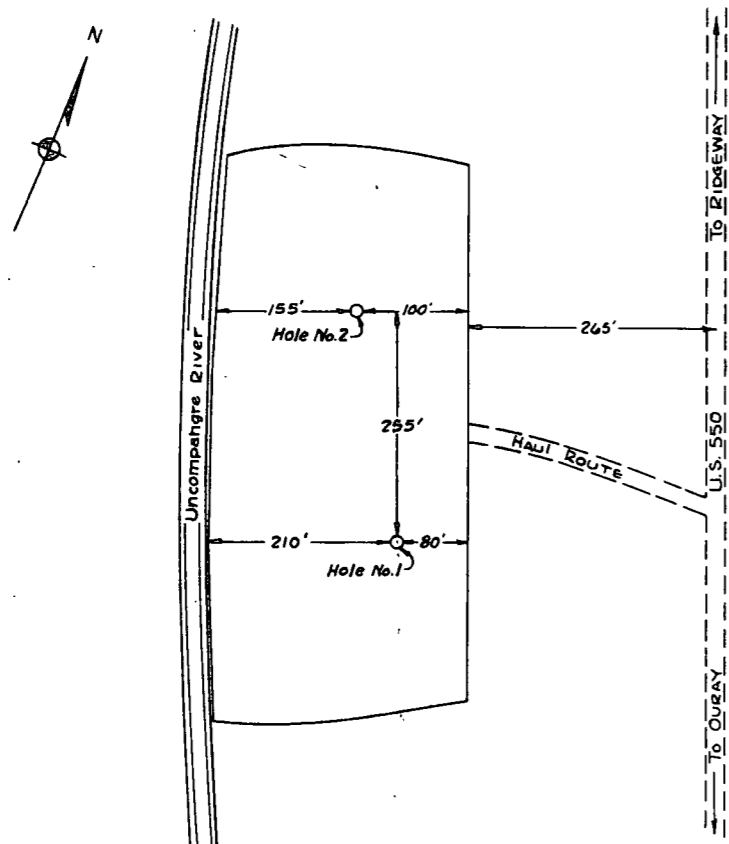
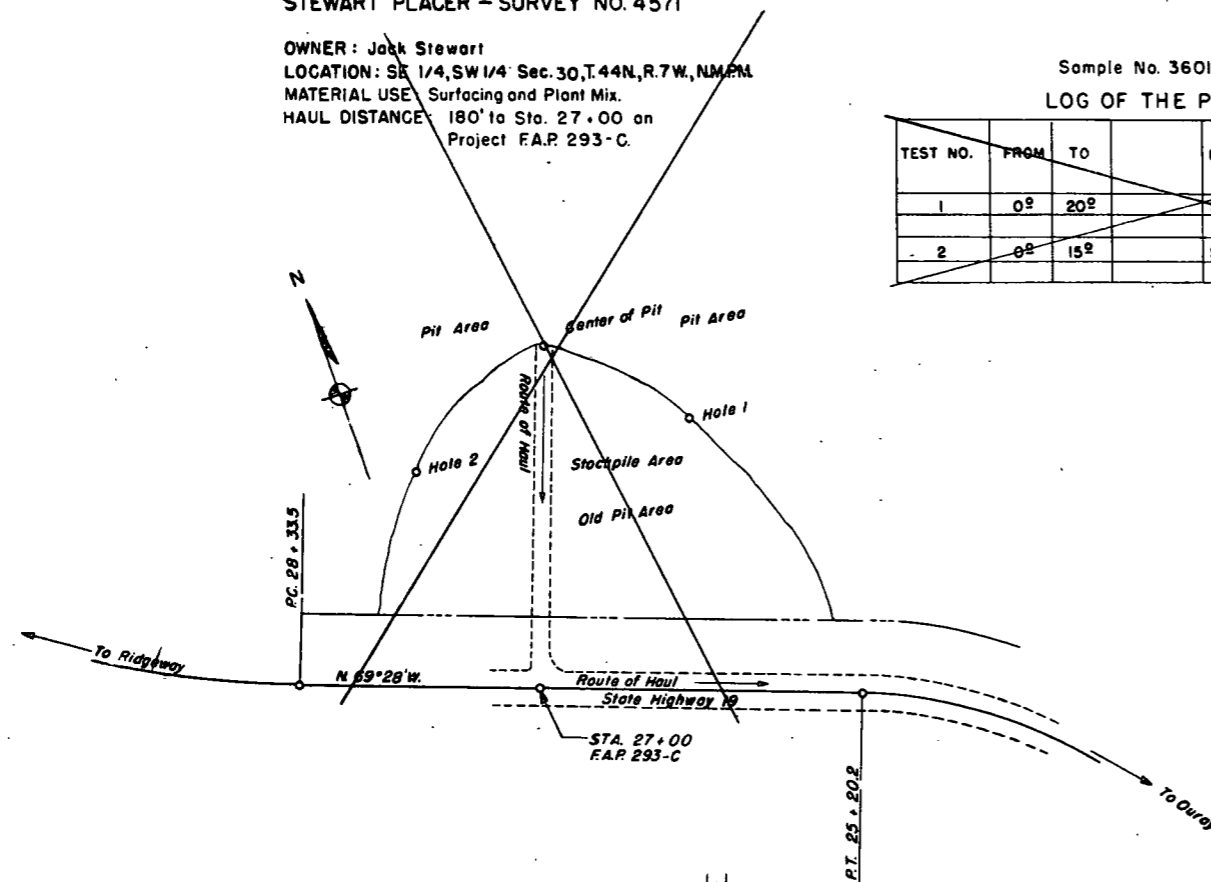
STEWART PLACER - SURVEY NO. 4571

OWNER: Jack Stewart
LOCATION: SE 1/4, SW 1/4 Sec. 30, T. 44N, R. 7W, N.M.P.M.
MATERIAL USE: Surfacing and Plant Mix.
HAUL DISTANCE: 180' to Sta. 27+00 on Project F.A.P. 293-C.

Sample No. 3601

LOG OF THE PIT

TEST NO.	FROM	TO	DESCRIPTION OF TEST-HOLE MATERIAL
1	0 ⁰	20 ²	Sand and Gravel
2	0 ⁰	15 ²	Sand and Gravel



PIT NO. 1
OWNER: WARREN H. GIBBS
LOCATION: SE 1/4, SE 1/4, Sec. 24, T. 44 N., R. 8 W.
QUANTITY AVAILABLE: 36,000 Cu. Yds.
STRIPPING: 1,000 Cu. Yds.
HAUL DISTANCE: 6,938 Ft. to Sta. 31+50
PROPOSED USE: SUBBASE, SURFACING, PLANT MIX

LOG OF THE PIT
FIELD SAMPLE NO. 2214

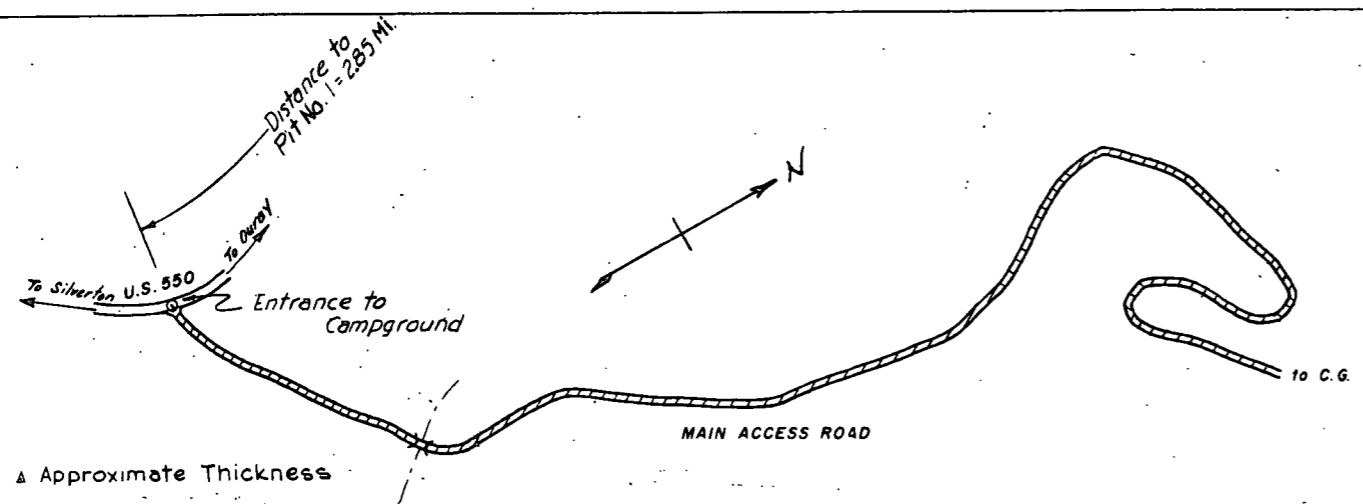
TEST No.	DEPTH	DESCRIPTION
1	0.0' - 4.0'	SAND & GRAVEL
2	0.0' - 0.7'	OVERBURDEN
2-a	0.7' - 6.0'	SAND & GRAVEL

TABULATION OF CONCRETE CURB & GUTTER AND SIDEWALKS

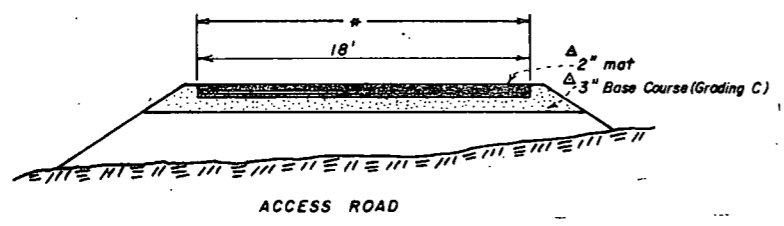
STATION to STATION	SIDE	CONC. COMB. CURB & GUTTER		CONCRETE SIDEWALK		REMOVE CONC. SIDEWALK SQ. FT.
		IN. FT.	TYPE	WIDTH	SQ. FT.	
0+00 - 2+52	Lt.	270		5'	1250	1250
2+52 - 3+32	Lt.					400
3+32 - 5+90	Lt.	280		5'	1300	1300
5+90 - 6+52	Lt.	80				400
6+52 - 7+32	Lt.					2760
7+32 - 9+60	Lt.	240		12'	2760	2760
9+60 - 10+52	Lt.	100				400
10+52 - 11+32	Lt.					400
11+32 - 14+52	Lt.	340		12'	3840	3840
14+52 - 15+32	Lt.					400
15+32 - 15+65	Lt.	45				
15+65 - 16+65	Lt.	100		12'	1200	1200
16+65 - 17+65	Lt.	100				
17+65 - 18+52	Lt.	95		12'	1020	1020
18+52 - 19+32	Lt.					400
19+32 - 22+52	Lt.	340		12'	3840	3840
22+52 - 23+32	Lt.					400
23+32 - 26+52	Lt.	340		12'	3840	3840
26+52 - 26+82	Lt.					180
26+82 - 28+60	Lt.	195		6'	1080	1080
28+60 - 29+35	Lt.	75				1080
29+35 - 29+85	Lt.	30		6'	300	300
29+85 - 31+50	Lt.	170				
0+00 - 2+52	Rt.	270		5'	1250	260
2+52 - 3+32	Rt.					400
3+32 - 6+52	Rt.	360		5'	1600	1600
6+52 - 7+32	Rt.					400
7+32 - 8+15	Rt.	95		12'	1020	1020
8+15 - 8+55	Rt.	40				
8+55 - 10+32	Rt.	205		12'	2340	2340
10+32 - 11+32	Rt.					400
11+32 - 14+52	Rt.	340		12'	3840	3840
14+52 - 15+32	Rt.					400
15+32 - 18+52	Rt.	340		12'	3840	3840
18+52 - 19+32	Rt.					400
19+32 - 20+17	Rt.	95				
20+17 - 20+92	Rt.	75		12'	900	900
20+92 - 21+42	Rt.	50				
21+42 - 22+52	Rt.	120		12'	2420	2420
22+52 - 23+32	Rt.					400
23+32 - 26+52	Rt.	340		12'	3840	3840
26+52 - 26+82	Rt.					150
26+82 - 31+50	Rt.	490		6'	2790	2790
TOTALS		2820	2820		44,270	48,410

FEDERAL ROAD REGION NO.	DISTRICT	PROJ. NO.	SHEET NO.	TOTAL SHEETS
9	COLORADO	C.56-0019-18	6	

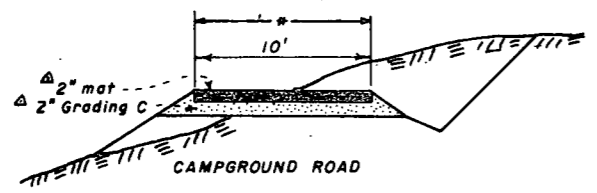
DETAILS OF AMPHITHEATER ROAD AND CAMPGROUND



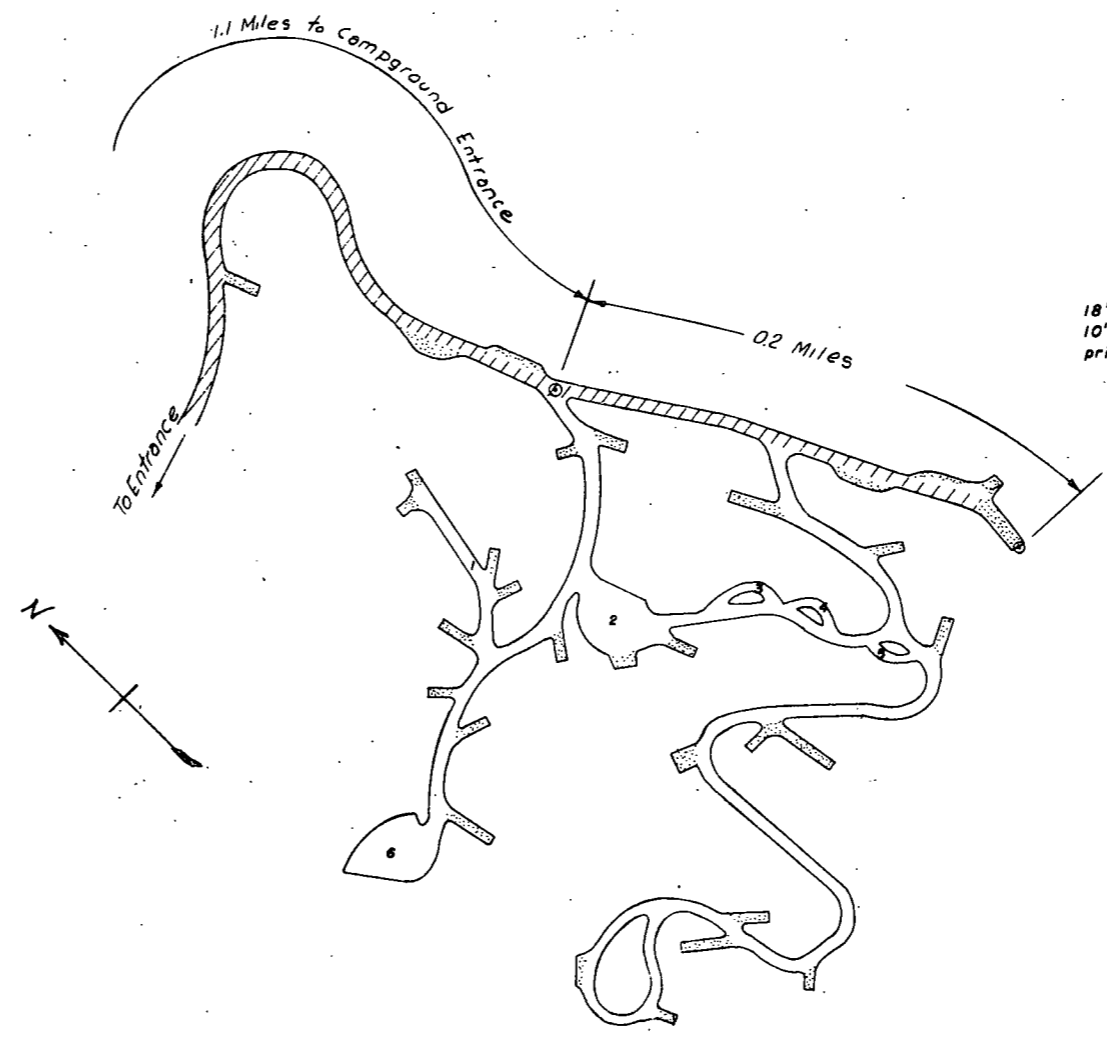
△ Approximate Thickness



All roads, spurs and parking areas to be treated with a bituminous prime coat of 0.4 gal./sq. yd.
 All asphalt to be 2" thick. Numbered spurs and parking areas to be paved. Other spurs to be primed only. Gravel all roads and spurs shoulder to shoulder.



* Width of Bituminous Pavement & Prime Coat



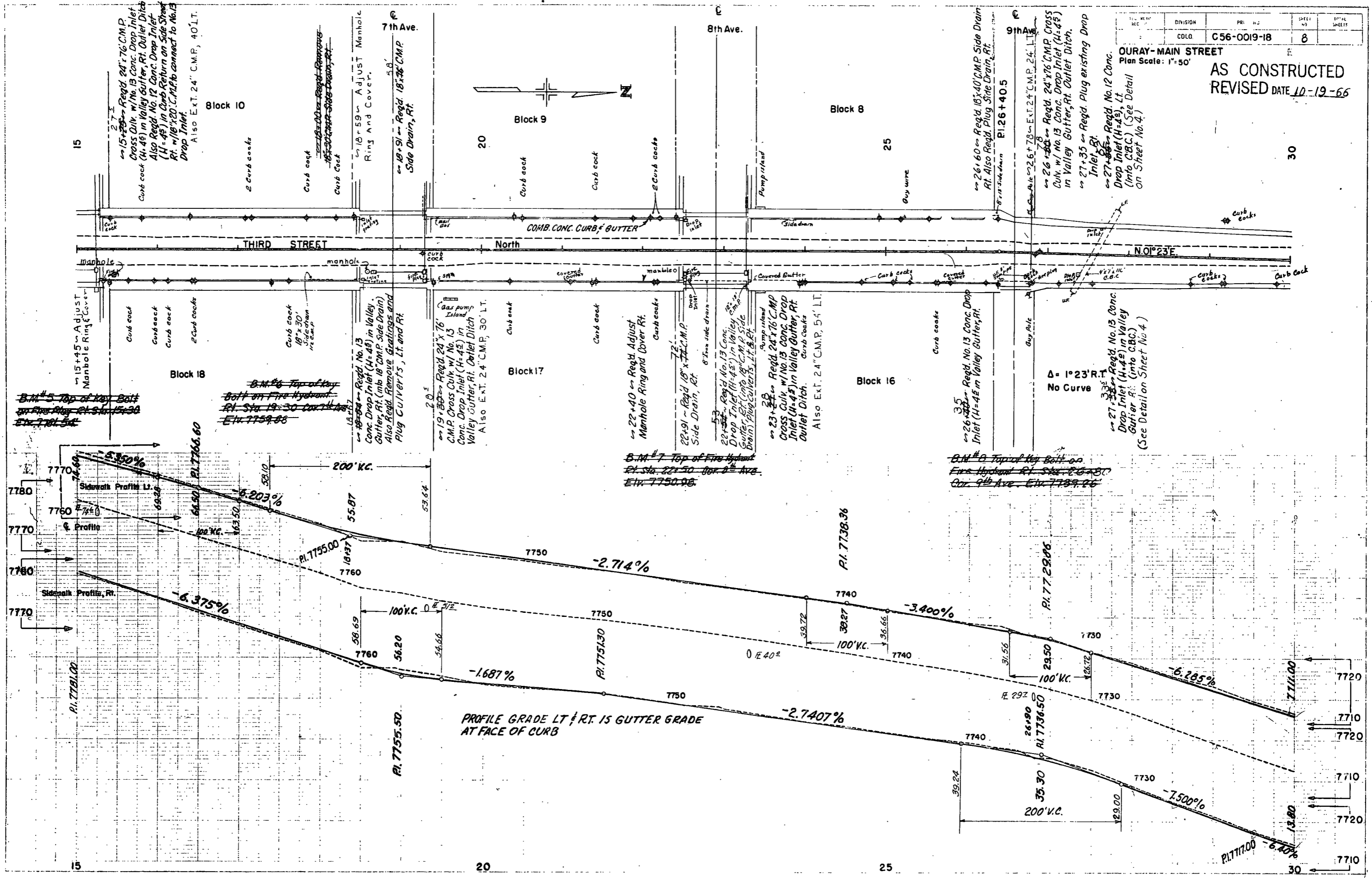
LEGEND

18' paving	
10' paving	
prime only	

Note:
 Roadbed will be shaped and the Ditches cleaned by the Forest Service.

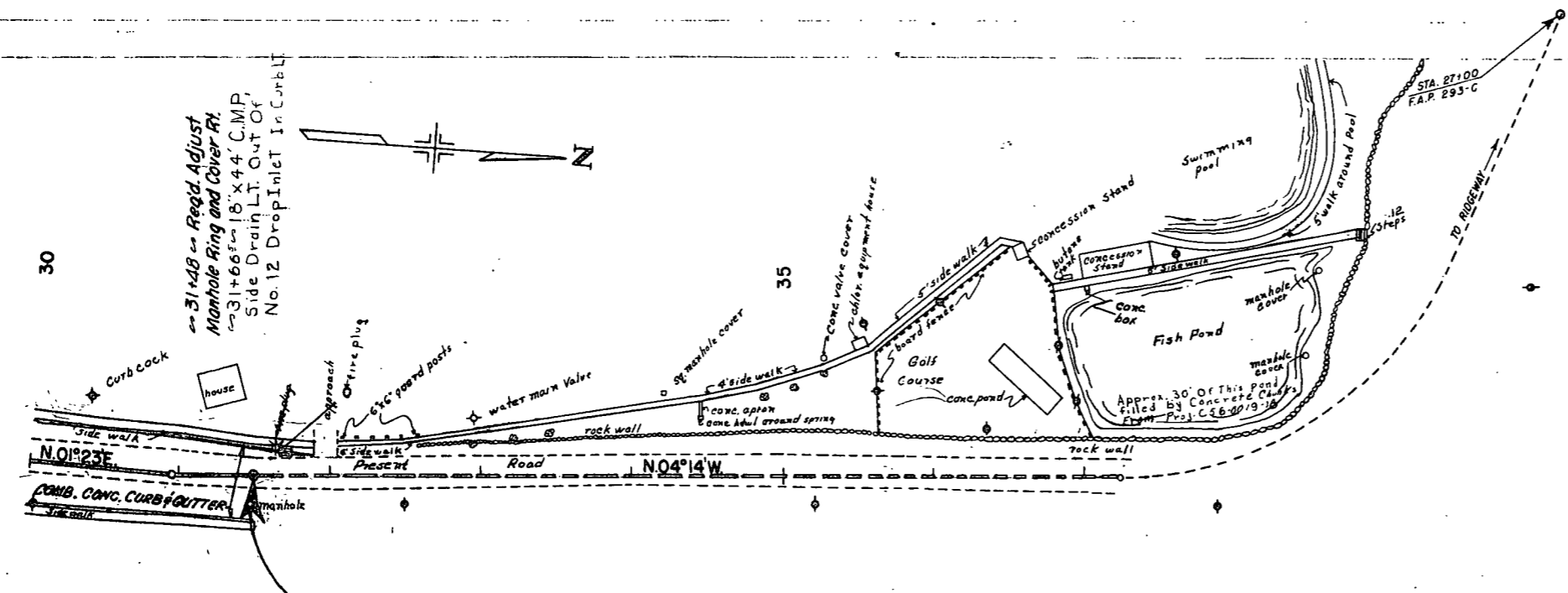
DIVISION	PRJ. NO.	SHEET NO.	TOTAL SHEETS
COLO.	C56-0019-18	8	

OURAY - MAIN STREET
 Plan Scale: 1"=50'
AS CONSTRUCTED
 REVISED DATE 10-19-66



DIVISION	PRJ. NO.	SHEET NO.	TOTAL SHEETS
COLO.	C 56-0019-18	9	

OURAY — MAIN STREET
 Plan Scale: 1" = 50'
 AS CONSTRUCTED
 REVISED DATE 10-19-66



STA. 31+50 = End Proj. C 56-0019-18 =
 Approx. STA. 16+70 On Former Proj. F.A.P. 293-C

PI. 30+95.4
 $\Delta = 5^{\circ}37'$ L.T.
 No Curve

B.M. #9 Top of Key Bolt on Fire Hydrant
 Lt. Sta. 31+65 Elev. 7705.90

B.M. #10A
 Nail in Power Pole
 Rt. of Road, 50' Past Sta. 37+25
 Elev. ~~7694.29~~ 7694.36

