

FED. ROAD DIST. NO.	STATE	PROJ. NO.	SHEET NO.	T.O. SHEET
9	COLO.	C60-0279-01	1.	

60.027901

INDEX OF SHEETS

SHEET NO.		
1	TITLE PAGE, SKETCH MAP, GENERAL NOTES & TABULATION OF LENGTH	
2	ALIGNMENT PLAN & PROFILE, SUMMARY OF APPROXIMATE QUANTITIES, STRUCTURE REQUIREMENTS	
3	DETAILS OF C.B.C. INLETS AND OUTLET	
4	STANDARD LETTERS & FIGURES FOR YEAR NUMBERS & STRUCTURE NUMBERS	M-10-B
5	STANDARD NO. 12 AND NO. 13 CONCRETE INLETS	M-12-D-13
6 & 7	STANDARD ROADWAY CONSTRUCTION TRAFFIC SIGNS (2 SHEETS)	M-29-B
8	STANDARD SINGLE AND DOUBLE CONCRETE BOX CULVERTS	M-50-A
9	STANDARD WINGWALLS FOR VARIOUS TYPES OF CONCRETE BOX CULVERTS	M-50-AW
10	CROSS SECTION	

COLORADO DEPARTMENT OF HIGHWAYS

PLAN AND PROFILE OF PROPOSED COLORADO PROJECT NO. C 60-0279-01 STATE HIGHWAY NO. 279 GILPIN COUNTY

SCALES OF ORIGINAL TRACINGS
ON PLAN, 1 IN. = 50 FT.
ON PROFILE 1 IN. = 100 FT. HORIZONTAL
1 IN. = 10 FT. VERTICAL
GRADE LINE ON PROFILE IS SHOWN AS GRADE OF FINISHED ROAD
GROSS AND NET LENGTH OF PROJECT 14.2 FT. = 0.003 MI.

CONVENTIONAL SIGNS

LINE SHEET	TITLE PAGE
CENTER LINE	
RIGHT OF WAY LINE	
COUNTY LINE	
TOWNSHIP OR RANGE LINE	T. 6 S. R. 89 W. T. 7 S. R. 89 W.
SECTION LINE	
QUARTER SECTION LINE	
CITY LIMITS	
BARBED WIRE FENCE	
WOVEN WIRE COMBINATION FENCE	
TELEPHONE & TELEGRAPH LINE	
POWER LINE	
PRESENT ROAD	

GENERAL NOTES

This project to be constructed in conformity with the Standard Specifications of the Colorado Department of Highways adopted June 1, 1952

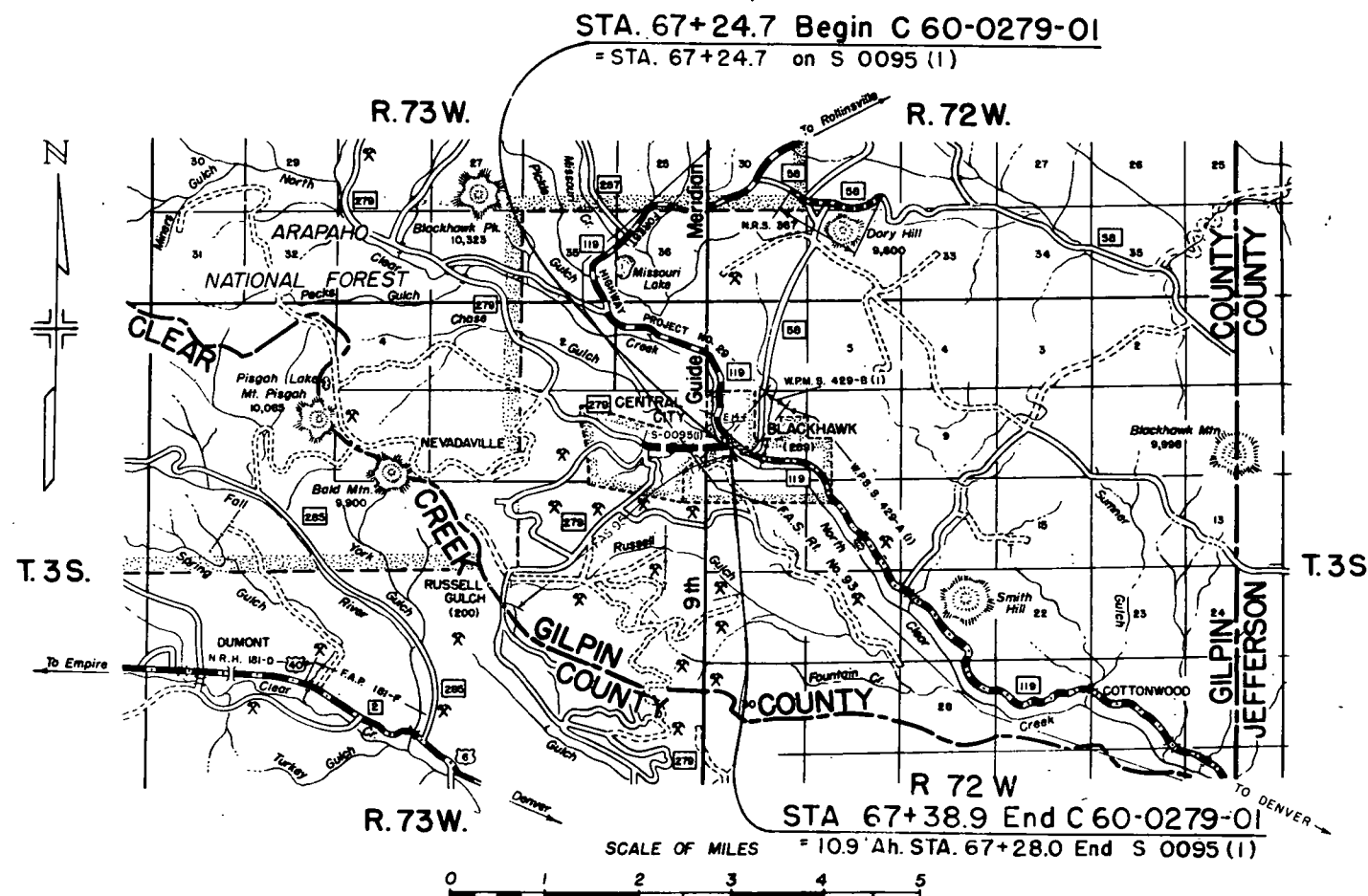
All quantities on preliminary plans are to be considered approximate only

All Surfacing, Asphalt, and Asphaltic Materials shall be placed and furnished by State Forces

Standard Wingwalls are not required for the Concrete Box Culvert used on this Project

TABULATION OF LENGTH

STATION	MINOR STRUCTURE LIN. FT.	STRUCTURE NO.
67+24.7 = Begin C 60-0279-01 = Sta 67+24.7 on S 0095 (1)		
67+38.9 = End C 60-0279-01 = 10.9' Ah. Sta. 67+28 End S 0095 (1)	14.2	E-14-f
TOTALS	14.2	
SUMMARY		
C 60-0279-01	LIN. FT. 14.2	MILES 0.003



INACTIVE

NOTICE TO BIDDERS

IT IS RECOMMENDED THAT BIDDERS ON THIS PROJECT GO OVER THE PLAN DETAILS WITH ONE OF THE FOLLOWING FIELD REPRESENTATIVES OF THIS DEPARTMENT.

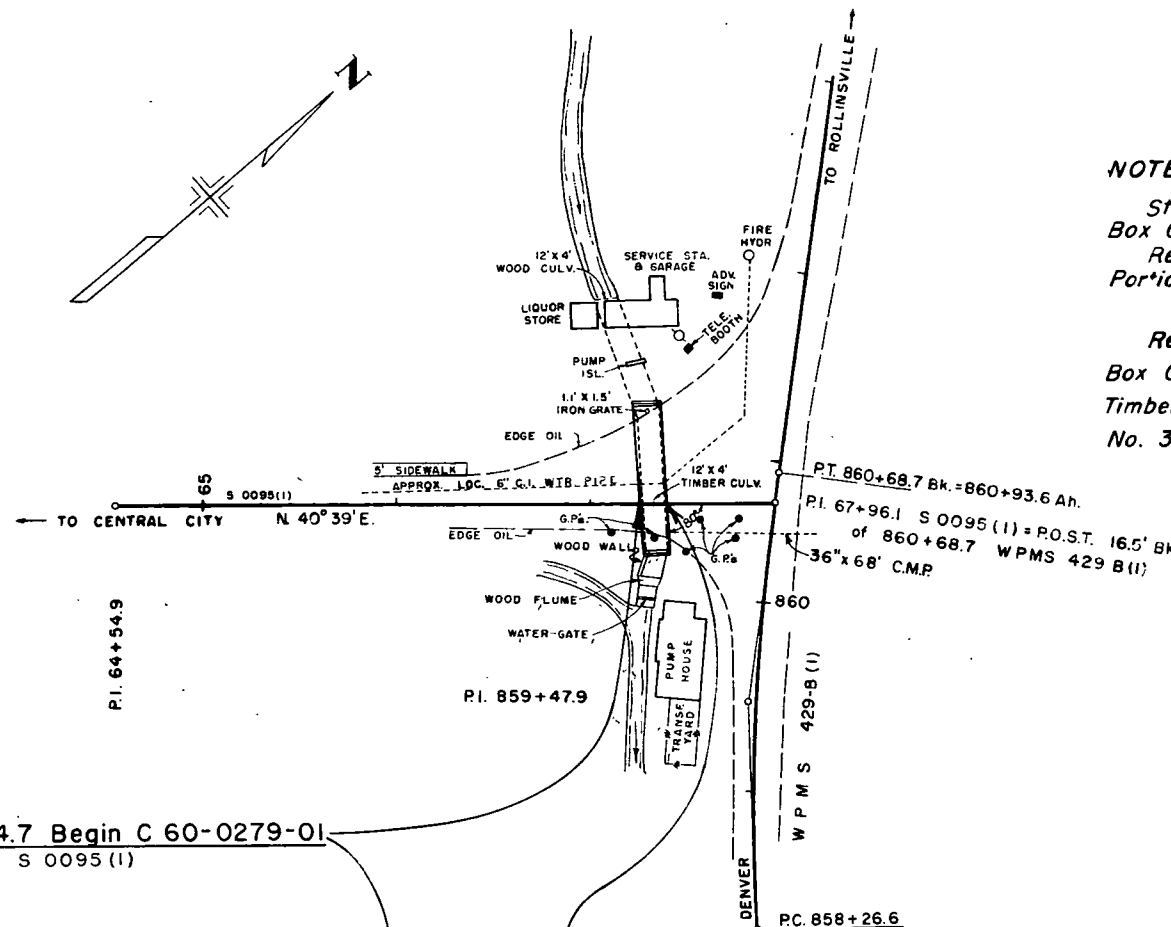
Mr. Glen McElowney Const. Eng. - Denver, Colo.
Telephone No. SK. 6-1531 - Ext. 227
Mr. R. C. Hopper Resident Eng. Idaho Springs, Colo.

Home Telephone No. 493

COLORADO DEPARTMENT OF HIGHWAYS	
APPROVED <i>Mark A. Watner</i> 12/1/55 CHIEF ENGINEER	DATE

PLAN	SUBMITTED
NO. 6	PORTION, CHANGES
NO. 7	PORTION, CHANGES
NO. 8	PORTION, CHANGES
NO. 9	PORTION, CHANGES

PROFILE	DATE
NO. 10	DATE
NO. 11	DATE
NO. 12	DATE
NO. 13	DATE



Sta. 67+24.7 Begin C 60-0279-01
= 67+24.7 on S 0095 (1)

Sta. 67+38.9 End C 60-0279-01
= 10.9' Ah. Sta. 67+28.0' End S 0095 (1)

SCALE OF ORIGINAL TRACING
PLAN 1" = 50'
PROFILE 1" = 100' (HOR.)
1" = 10' (VERT.)

FED. ROAD DIST. NO.	DIST.	PROJ. NO.	SHEET NO.	TOTAL SHEETS
9	COLO.	C-60-0279-01	2	

NOTES:
Sta. 67+31.8 Remove 12'x4'x77' Wood Box Culvert.
Remove Portion of Wood Flume Rt. and Portion of Log Cribbing Lt.

Req'd Type 12-A (12'x6'x77') Concrete Box Culvert, No. 13 Inlet Lt. and Treated Timber Inlet and Outlet. (Details Sheet No. 3)

SUMMARY OF APPROXIMATE QUANTITIES				
ITEM NO	ITEM	UNIT	QUANTITY	
11 a	Remove 12'x4'x77' Wood Box Culvert Sta. 67+31.8	L. S.	•	
11 b	Removal of Portions of Present Structures Rt. & Lt. Sta. 67+31.8	L. S.	•	
*11 d	Remove & Reset Guard Posts	Each	5	
14 a	Dry Rock Excavation (Str.)	Cu. Yd.	20	
14 b	Dry Common Excavation (Str.)	Cu. Yd.	50	
14 c	Wet Rock Excavation (Str.)	Cu. Yd.	10	
14 d	Wet Common Excavation (Str.)	Cu. Yd.	20	
16 a x	Structure Backfill (Class 1)	Cu. Yd.	140	
16 c	Mechanical Tamping	Hour	20	
*30 x	Asphaltic Road Material MC (Prime)	Gal.	70	
*32 a	Plant Mixed Asphaltic Surfacing	Ton	20	
44 b	Miscellaneous Treated Timber	Mft. bm.	0.9	
46 a	Class 'A' Concrete	Cu. Yd.	122	
47	Reinforcing Steel	Lb.	11,000	
132 gb	No. 13 Inlet Grating & Frame	Each	1	

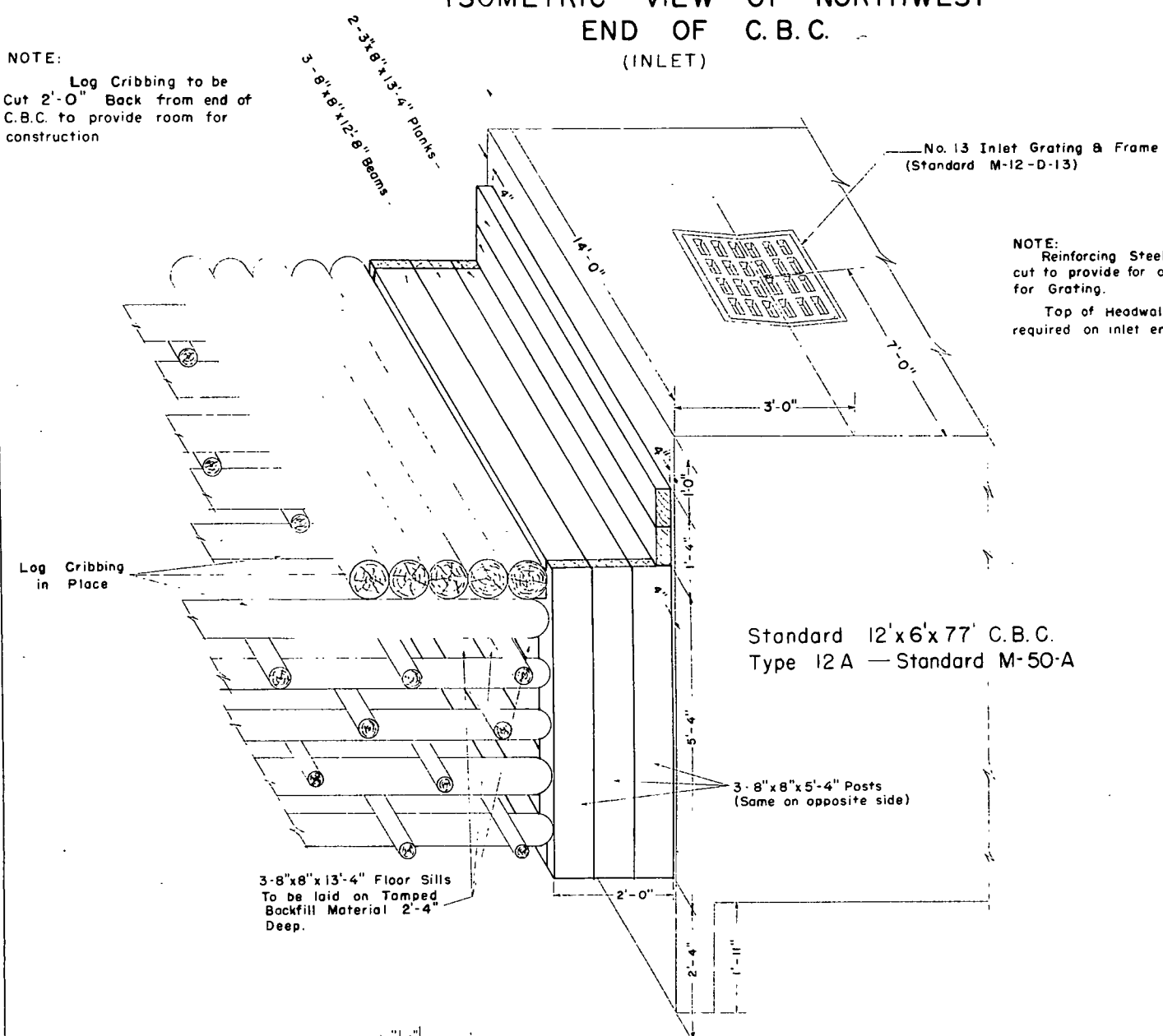
* By State Forces

8070
8060
8050

12' x 4' TIMBER CULVERT
F.L. 44.8

ISOMETRIC VIEW OF SOUTHEAST
END OF C.B.C.
(OUTLET)

Log Cribbing to be
Cut 2'-0" Back from end of
C.B.C. to provide room for
construction



Top of Headwall not
required on inlet end of CBC

Standard 12'x6'x77' C.B.C.
Type 12 A — Standard M-50-A

- 3 - 8" x 8" x 5'-4" Posts
(Same on opposite side)

3-8"x8"x13'-4" Floor Sills
To be laid on Tamped
Backfill Material 2'-4"
Deep.

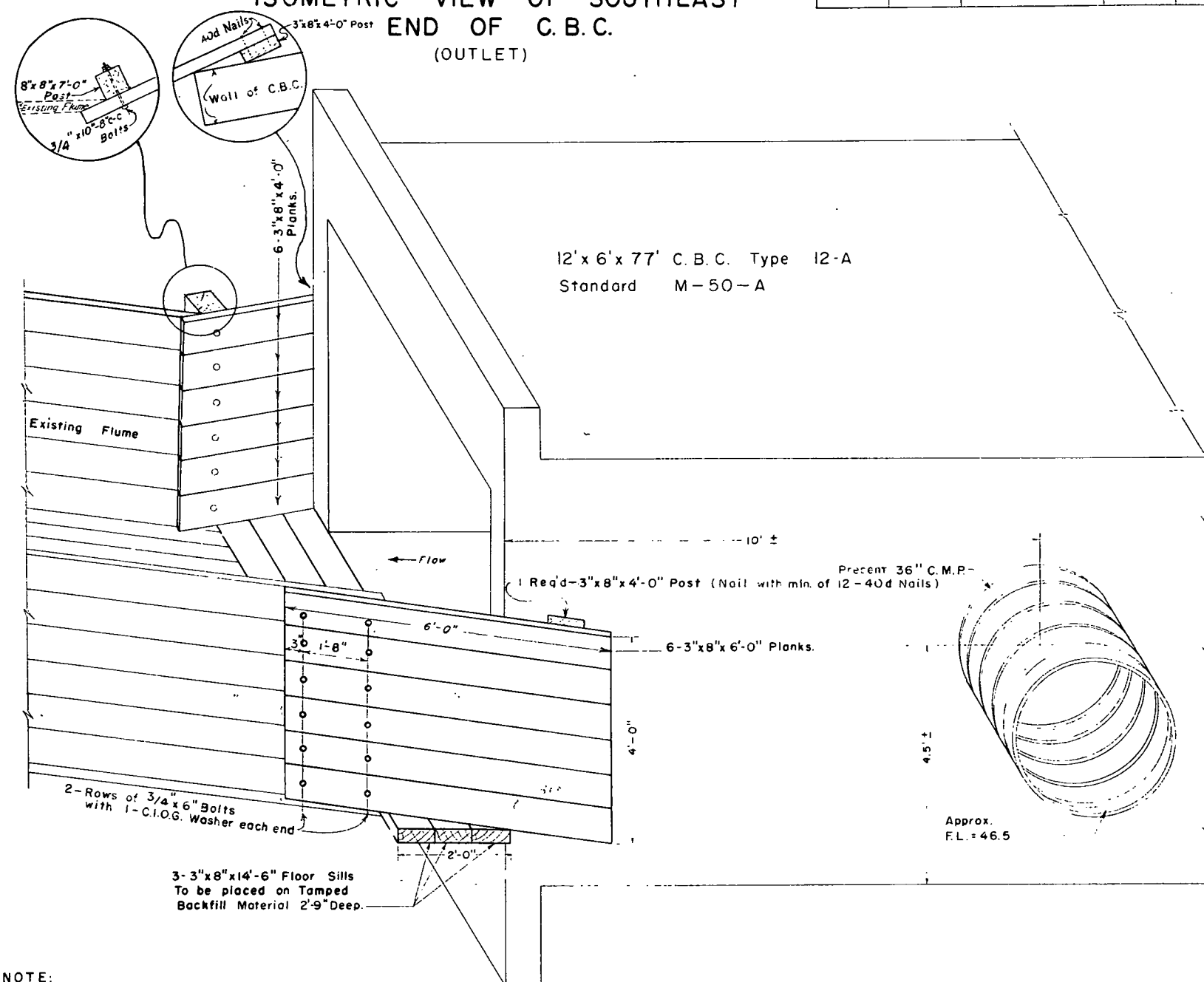
All timber is to be precut
and ends Creosote treated.

2 PLANKS 3"x 8"x 13'-4"

Structural Excavation is estimated to be 75% common and 25% rock, each of which is estimated to be 75% dry and 25% wet. -

Flume to be cut 2'-0" back from end of C.B.C. to provide room for construction.

12' x 6' x 77' C. B. C. Type 12-A
Standard M-50-A



Approx.
F.L. = 46.5

46 Bolts $\frac{5}{8}$ x 10
415 Lag Nails 10d / 16 penny

Reinforcing Steel to be
cut to provide for opening for
36" C.M. P.

9 NOTE: Cost of Bolts, Washers, and Nails, complete in place, will be included in the price bid for "Miscellaneous Treated Timber"

DETAIL OF POST

60.027901

9

December 19, 1955

COLORADO DEPARTMENT OF HIGHWAYS
SPECIAL PROVISIONS
FOR
COLORADO PROJECT NO. C 60-0279-01
IN BLACKHAWK

The following special provisions take precedence over all conflicting details in Specifications or on plans, and supplement the Standard Specifications adopted by the Department on June 1, 1952, together with Standard Special Provisions "Application (October 12, 1954)," "Employment Lists; Labor Selection; Nondiscrimination (October 12, 1954)," "Classification of Employees (October 12, 1954)," "Payment of Predetermined Minimum Wages (October 12, 1954)," "Subletting or Assigning the Contract (October 12, 1954)," "Adjustments for Changes in Common Carrier Rates (July 22, 1948)," "General (March 28, 1947)," "Compensation Insurance (March 28, 1947)," "3% Transportation Tax Exemption (June 17, 1952)," and "Emergency Cancellation of Contract (June 17, 1952)."

I N D E X

		<u>Page</u>
Index Page	(December 19, 1955)	9
Minimum Wages (Third District)	(April 17, 1941)	10
Rental of Teams and Trucks	(March 28, 1947)	11
Commencement and Completion of Work and Liquidated Damages	(December 19, 1955)	12
Item 11b - Removal of Portions of Present Structures Rt. and Lt. Sta. 67+31.8	(December 19, 1955)	13
Revision of Item 16 - Structure Backfill (Class 1)	(July 16, 1952)	14
Rev. of Item 16	(December 19, 1955)	15
Revision of Item 42 - Timber Bridges	(September 10, 1954)	16
Item 46 - Concrete	(December 19, 1955)	17
Affidavit Relative to Collusion	(June 7, 1955)	18
Exemption From Ton-Mile Taxes	(April 26, 1955)	19
Protection of Utilities	(December 8, 1949)	20
Provisions For Traffic During Construction	(April 14, 1949)	21
Sales Tax Refund on Construction Materials	(September 1, 1955)	22
Contractor's Certificate (Form DR 513)		23

December 19, 1955

ITEM 11b
REMOVAL OF PORTIONS OF PRESENT STRUCTURES
RT. AND LT. STA. 67+31.8
COLORADO PROJECT NO. C 60-0279-01

DESCRIPTION AND REQUIREMENTS:

This item shall conform to Item 11 of the Standard Specifications except as modified hereinbelow:

Portions of Wood Flume right and portions of Log Cribbing left of Sta. 67+31.8, shall be removed, and the remaining portions of structures shall be prepared to fit new construction work as shown on plans.

This work shall be done in accordance with the plan detail in such a manner that materials to be left in place shall be protected from damage. The Contractor on this project will be required to repair and/or replace at his expense, any portion of existing structures to remain in place, that are damaged or rendered unservicable by the Contractor's operations. Material for replacing damaged material shall be new and of like kind and dimension as in the present structure.

Removed materials shall be disposed of within 500 feet of present structure site at location designated by the Engineer.

BASIS OF PAYMENT:

This item completed in accordance with the foregoing requirements, will be paid for at the contract lump sum price for "Removal of Portions of Present Structures Rt. and Lt. Sta. 67+31.8," which price and payment shall be full compensation for removing, hauling, and disposing of all removed materials, preparing remaining portions of structures to fit new construction work, protection of portions of structures to remain in place and for all labor, repairs, new material, equipment, tools, supplies, and incidentals necessary to complete the work.