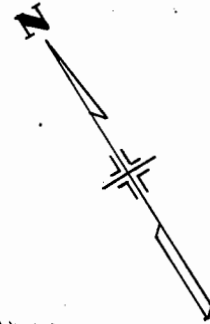


THE STATE DEPARTMENT OF HIGHWAYS
 DIVISION OF HIGHWAYS - STATE OF COLORADO
PROJECT DPFC 050-2(5) Sec. 1
 R.O.W. OWNERSHIP MAP
 MONTROSE COUNTY
 T. 48 & 49 N., R. 7 W., N.M.P.M.
 Scale 1" = 200'

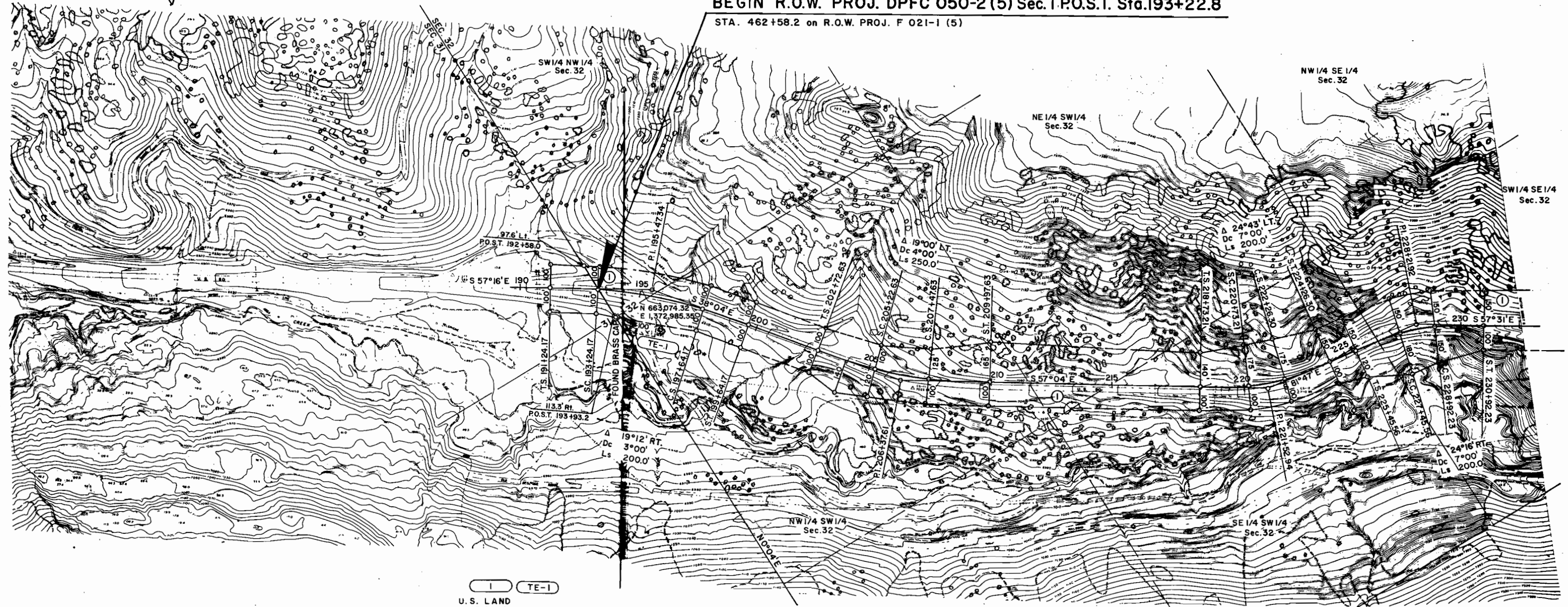
FEDERAL ROAD DISTRICT NO.	DIVISION	PROJ. NO.	SHEET NO.	TOTAL SHEETS
VIII	COLORADO	DPFC 050-2(5) Sec. 1	8	10

RIGHT OF WAY			REVISIONS	
W. SIDE CERRO SUMMIT	9-26-77	Add Sec. 1 to Proj		GM

NOTE
 All Coordinates of Section Corners are Colorado Coordinate System Coordinates.
 All Bearings are Rotated to True North 1° 20' Counter Clockwise.



BEGIN R.O.W. PROJ. DPFC 050-2 (5) Sec. 1 P.O.S.T. Sta. 193+22.8
 STA. 462+58.2 on R.O.W. PROJ. F 021-1 (5)



I TE-1
 U. S. LAND
 (B. L. M.)
 SW 1/4 NW 1/4, N 1/2 SW 1/4,
 SE 1/4 SW 1/4, Sec. 32

T. 49 N. R. 7 W. N.M.P.M.
 T. 48 N. R. 7 W. N.M.P.M.