

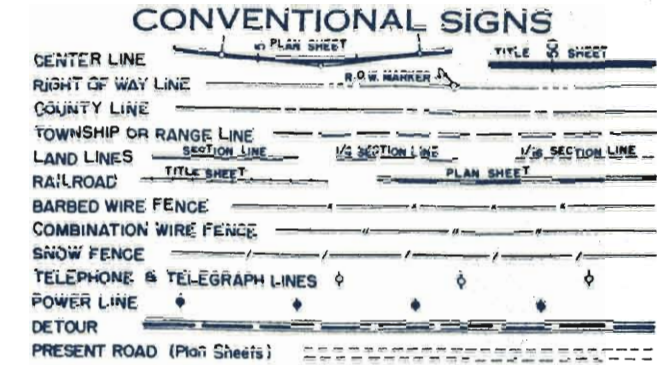
COLORADO DEPARTMENT OF HIGHWAYS

PLAN AND PROFILE OF PROPOSED FEDERAL AID PROJECT NO. DS 0002 (20) STATE HIGHWAY NO. ~~100~~ 160 LAS ANIMAS COUNTY

FEDERAL ROAD REGION NO.	DIVISION	PROJ. NO.	SHEET NO.	TOTAL SHEETS
9	COLORADO	DS 0002 (20)	1	1

INDEX OF SHEETS

SHEET NO. 1	TITLE PAGE, SKETCH MAP AND TABULATION OF LENGTH AND DESIGN	
2	TYPICAL SECTION, GENERAL NOTES AND TYPICAL SECTION FOR DETOUR	
3	SUMMARY OF APPROXIMATE QUANTITIES	
4	SUB-BASE MATERIAL PLAN, SURFACING PLAN AND TABULATION OF GUARD POSTS.	
5	LOCATION OF MATERIAL PIT	
6	LIST OF STRUCTURES	
7-8	DETAILS OF BRIDGE, STA. 1285+	M-1-D
9	STANDARD METHODS FOR SUPERELEVATION & WIDENING OF CURVES (CROWNED HIGHWAYS)	M-1-D
10	STANDARD SIDE APPROACH ROADS, FLARING, CUT SLOPE TREATMENT & WIDENING AT BRIDGES AND AT CREST OF GRADES	M-2-EN M-7-D
11	STANDARD MARKER POSTS AND BENCH MARKS	
12	STANDARD LETTERS AND FIGURES FOR YEAR NUMBERS AND STRUCTURE NUMBERS	M-10-D
13	STANDARD TIMBER GUARD POSTS	M-19-E
14	STANDARD METAL PLATE GUARD FENCE (BEAM TYPE)	M-21-D
15-16	STANDARD ROADWAY CONSTRUCTION TRAFFIC SIGNS (2 SHEETS)	M-29-C
17	STANDARD METHODS OF BACKFILL AROUND STRUCTURES	M-60-B
18	STANDARD TYPES OF DITCHES AND CONSTRUCTION METHODS	M-107-D
19	REINFORCED CONCRETE CULVERT PIPE AND CONCRETE SEWER PIPE	M-112-F
20-34	ALIGNMENT PLAN AND PROFILE	
35	SUMMARY OF EARTHWORK QUANTITIES	
36-40	CROSS SECTIONS	



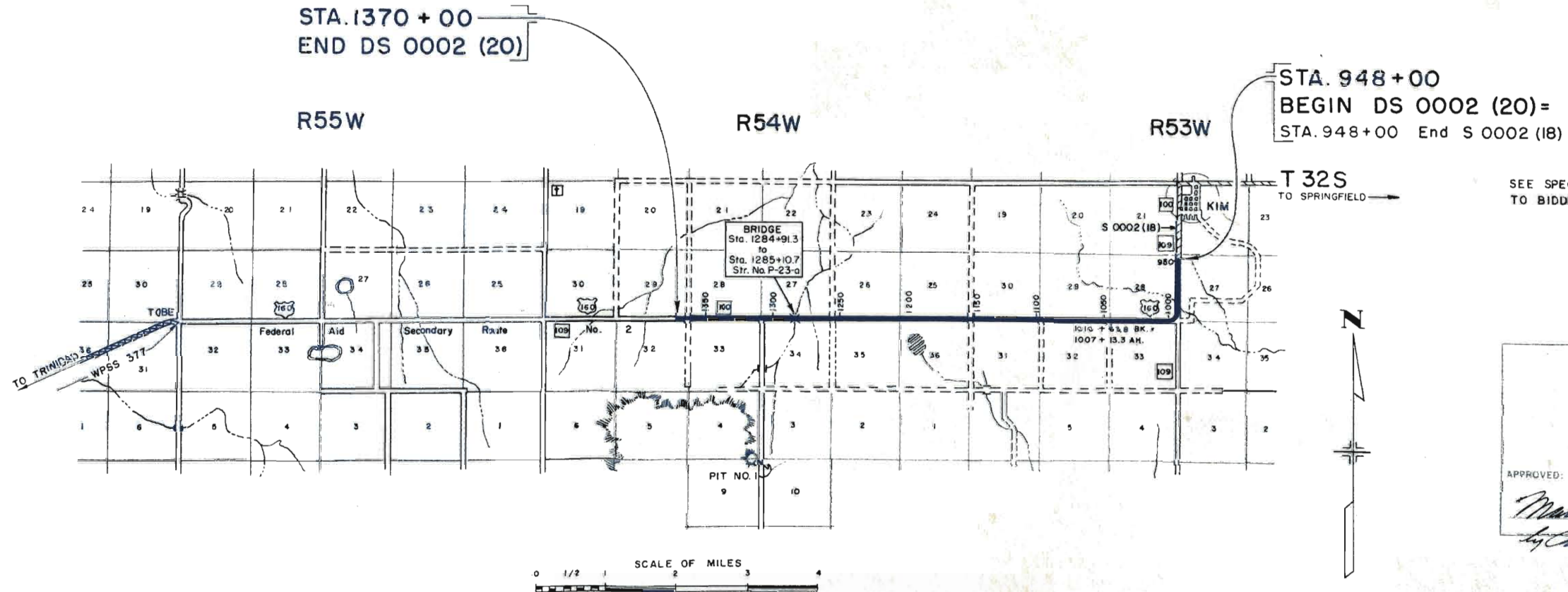
SCALES OF ORIGINAL DRAWINGS

ON PLAN, 1 IN. = 100 FT.
 ON PROFILE, 1 IN. = 100 FT. HORIZONTAL
 1 IN. = 10 FT. VERTICAL

GRADE LINE ON PROFILE IS SHOWN AS GRADE OF FINISHED ROAD
 GROSS LENGTH OF PROJECT 42,575.0 feet = 8.063 miles
 NET LENGTH OF PROJECT 42,575.0 feet = 8.063 miles

TABULATION OF LENGTH & DESIGN DATA

STATION	ROADWAY	
	LIN. FT.	
948+00 BEGIN DS 0002 (20) 948+00 End S 0002 (18)	5,396.0	
1001+96 Bk. EQUA. 1001+71.6 Bk.	892.2	
1010+63.8 Bk. EQUA. 1007+13.3 Bk.	20,058.4	
1207+71.7 Bk. EQUA. 1207+71.6 Bk.	7,719.7	
1284+91.3 Bridge - Str. No. P-23-a 1285+10.7	19.4	
1370+00 END DS 0002 (20)	8,489.3	
TOTAL	42,575.0	
SUMMARY	LIN. FT.	MILES
ROADWAY	42,575.0	8.063
TOTAL - Net and Gross Length	42,575.0	8.063
DESIGN DATA		
MAXIMUM DEGREE OF CURVE	10°00'	
MAXIMUM GRADE	3.3%	
MINIMUM N.R.S.D. (horizontal)	400'	
MINIMUM N.R.S.D. (vertical)	3.20'	
MAXIMUM DESIGN SPEED	45 M.P.H.	



SEE SPECIAL PROVISIONS FOR NOTICE TO BIDDERS.

COLORADO DEPARTMENT OF HIGHWAYS

APPROVED:

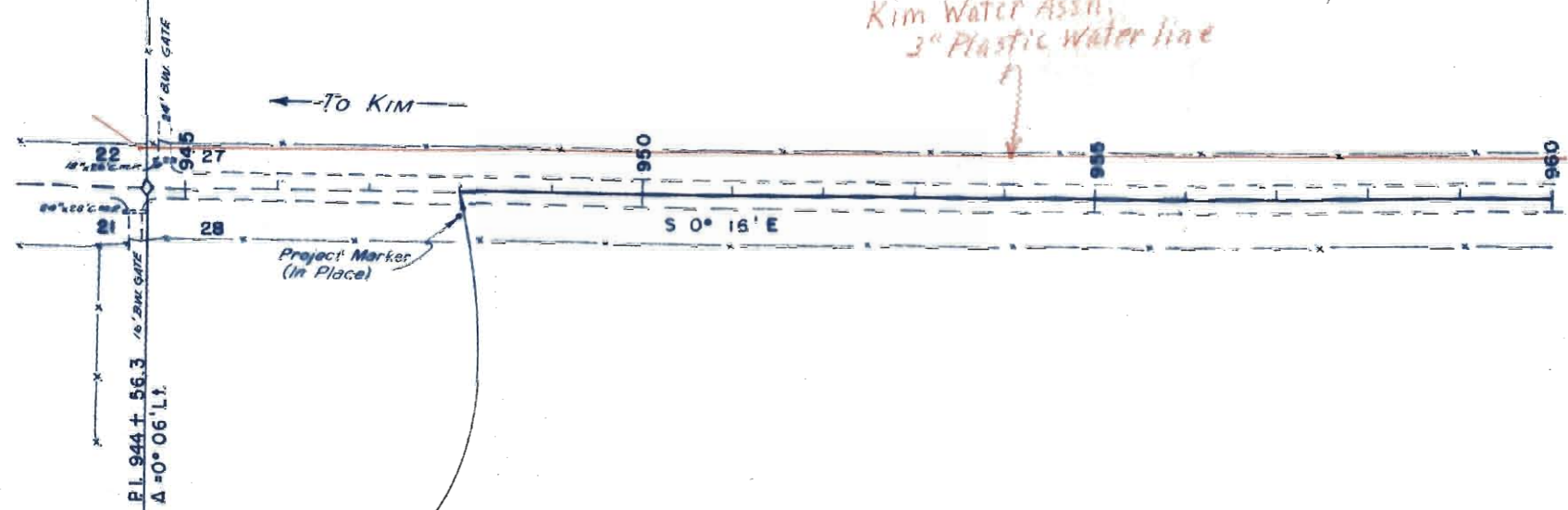
Mark U. [Signature]
 CHIEF ENGINEER

NOTE:

Alignment and Grades as shown are subject to modification during construction after approval by the Denver Office. Soil data shown on the plans is obtained from best available testing laboratory information. This information is shown for convenience of the Contractor, and the Department does not guarantee the accuracy of these tests. If materials not conforming to the data on plans are encountered during construction the grading plan shown on plans will be modified where necessary to secure dense, stable embankments.

NW 1/4 SEC. 27

FED. ROAD DIV. NO.	DIST.	PROJ. NO.	SHEET NO.	TOTAL SHEETS
9	COLO.	DS 0002(20)	20	



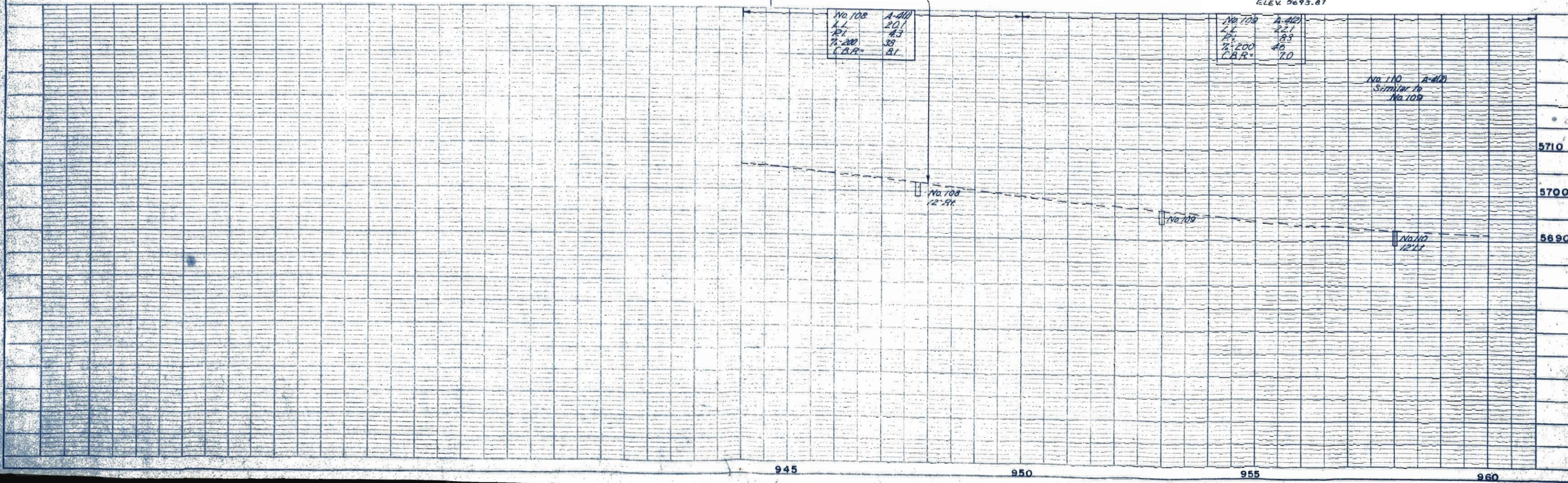
STA. 948 + 00
 BEGIN DS 0002 (20) =
 STA. 948 + 00 End S 0002 (18)

NE 1/4 SEC. 28
 T.32S, R.53W
 BM # 64
 ELEV. 5693.87

No. 108	A-410
L.L.	20.1
P.L.	4.3
T-200	38
C.B.R.	31

No. 109	A-421
L.L.	22.1
P.L.	8.3
T-200	40
C.B.R.	7.0

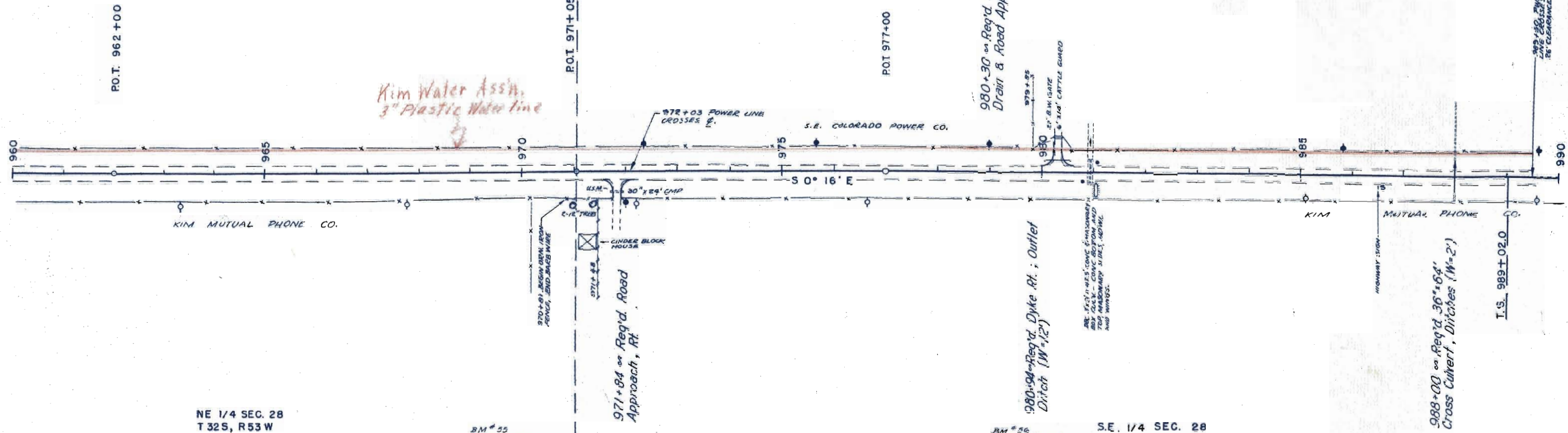
No. 110 A-410
 Similar to
 No. 109



PLAN	DATE
DESIGNED	
CHECKED	
APPROVED	
DATE	

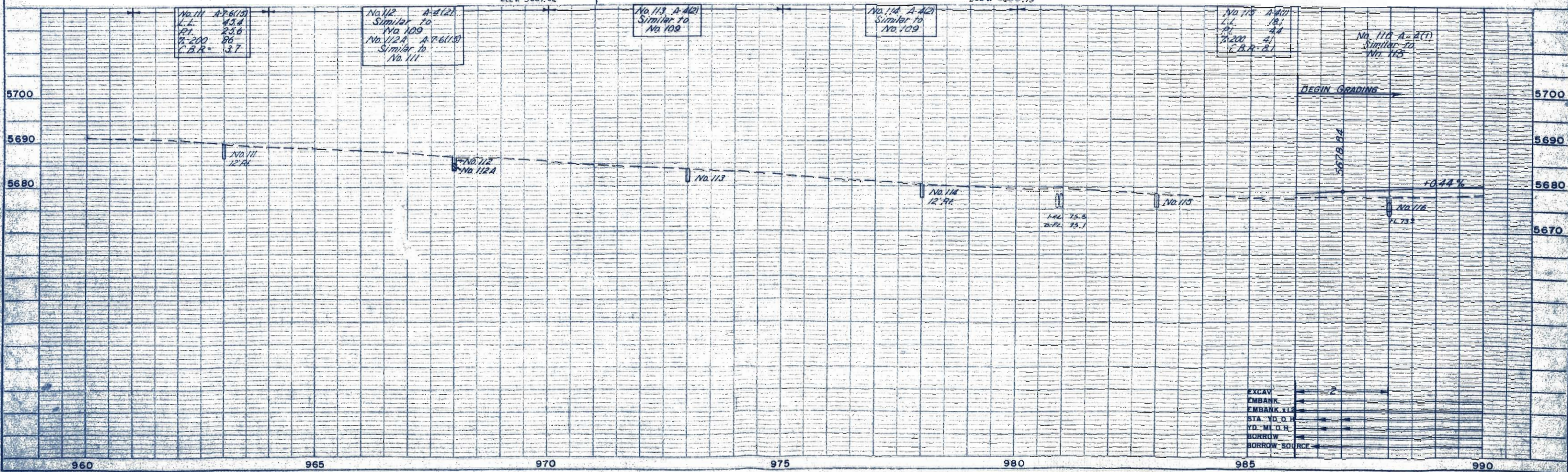
PROFILE	DATE
DESIGNED	
CHECKED	
APPROVED	
DATE	

FED. ROAD DIV. NO.	DIST.	PROJ. NO.	SHEET NO.	TOTAL SHEETS
9	COLO.	05 0002(20)	21	



NE 1/4 SEC. 28
T 32S, R 53W

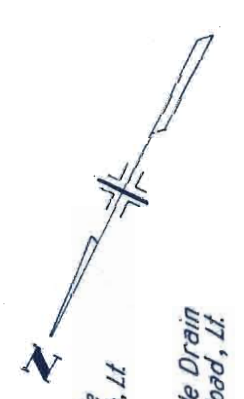
S.E. 1/4 SEC. 28



PLAN
CHECKED
DATE BOOK ALIGNMENT CHECKED
NO. 272

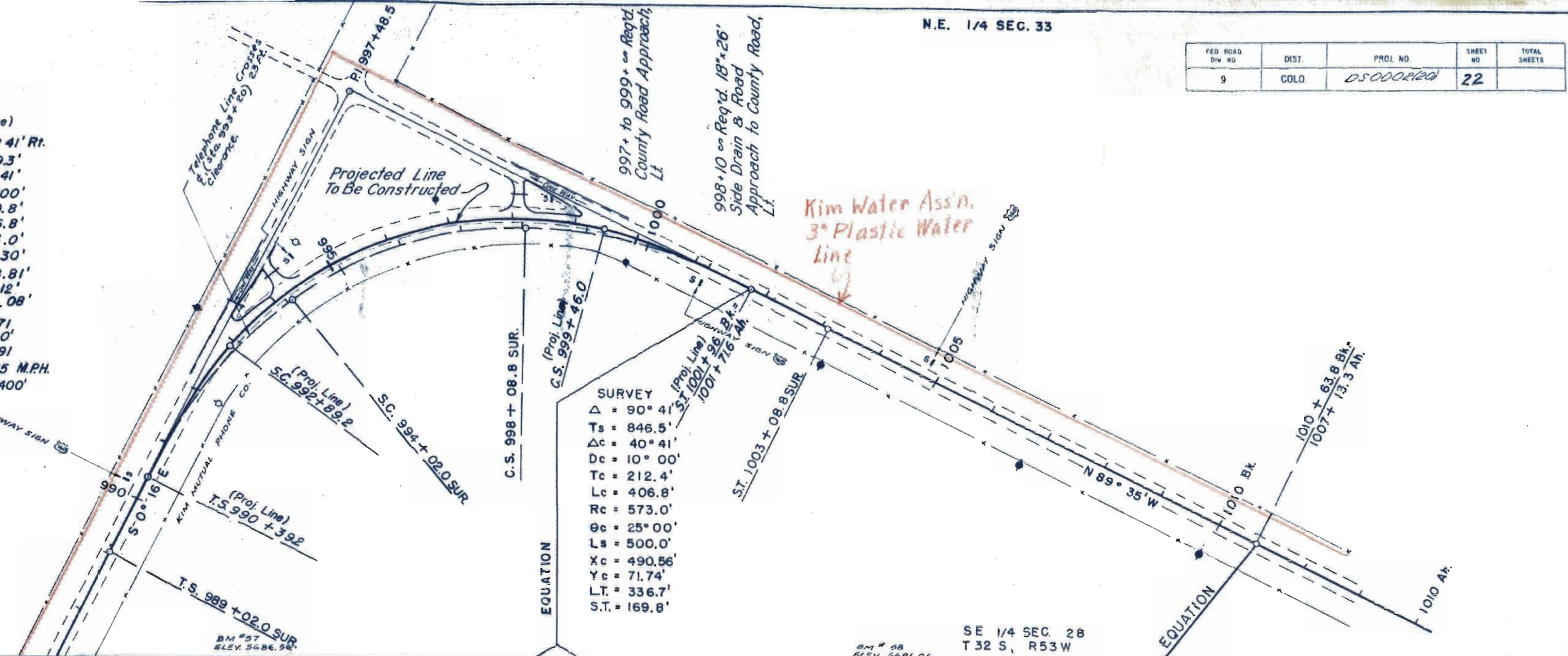
PROFILE
CHECKED
DATE BOOK GRADES CHECKED
NO. 272

FED. ROAD DIV. NO.	DIST.	PROJ. NO.	SHEET NO.	TOTAL SHEETS
9	COLO.	D.S. 0002120	22	



992 to 994+00 Req'd. 18"x26" Side Drain & County Road Approach, Lt.
 994+25 to 997+00 Req'd. 18"x26" Side Drain & Road Approach to County Road, Lt.

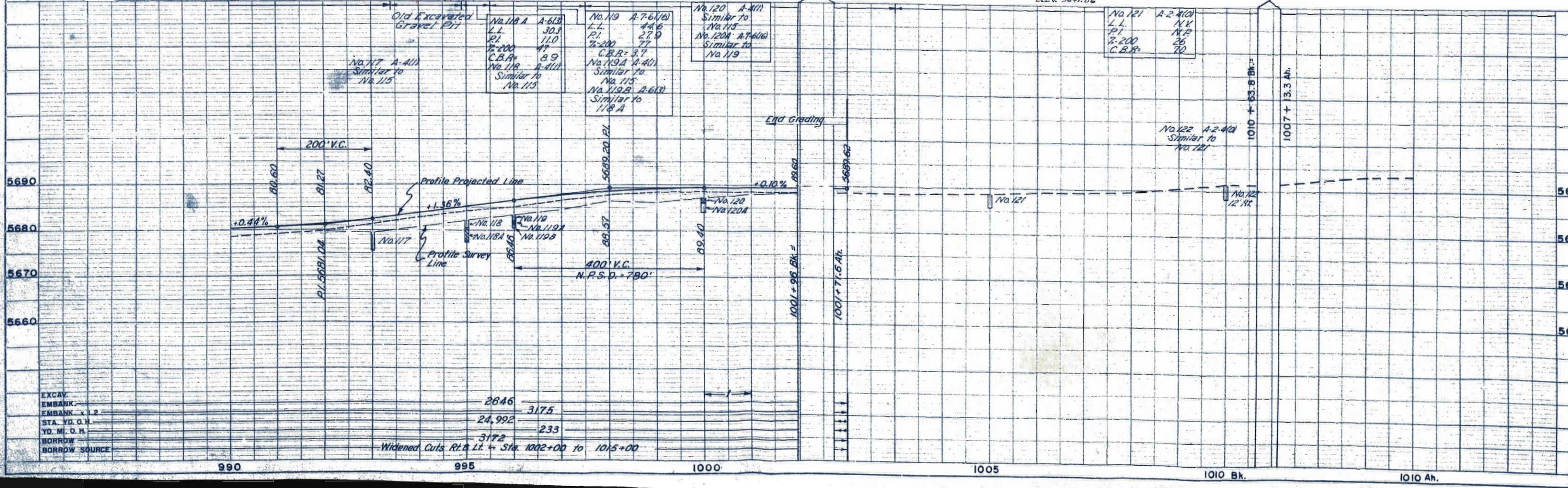
(Proj. Line)
 $\Delta = 90^\circ 41' Rt.$
 $T_s = 709.3'$
 $\Delta c = 65^\circ 41'$
 $D_c = 10^\circ 00'$
 $T_c = 369.8'$
 $L_c = 656.8'$
 $R_c = 573.0'$
 $\theta_s = 12^\circ 30'$
 $X_c = 248.81'$
 $Y_c = 18.12'$
 $L.T. = 167.08'$
 $S.T. = 83.71'$
 $L_s = 250.0'$
 $S = 0.091$
 $M.D.S. = 45 M.P.H.$
 $Hor. S.D. = 400'$



SURVEY
 $\Delta = 90^\circ 41'$
 $T_s = 846.5'$
 $\Delta c = 40^\circ 41'$
 $D_c = 10^\circ 00'$
 $T_c = 212.4'$
 $L_c = 406.8'$
 $R_c = 573.0'$
 $\theta_c = 25^\circ 00'$
 $L_s = 500.0'$
 $X_c = 490.56'$
 $Y_c = 71.74'$
 $L.T. = 336.7'$
 $S.T. = 169.8'$

S.W. 1/4 SEC. 27

SE 1/4 SEC. 28
 T 32 S, R 53 W



EXCAV.	2646	3175
EMBANK		
EMBANK x 1/2	24,992	233
STA. V.D.O.H.		
Y.D. M.O.H.	3172	233
BORROW		
BORROW SOURCE		

Widened Cuts Rt. & Lt. - Sta. 1002+00 to 1015+00

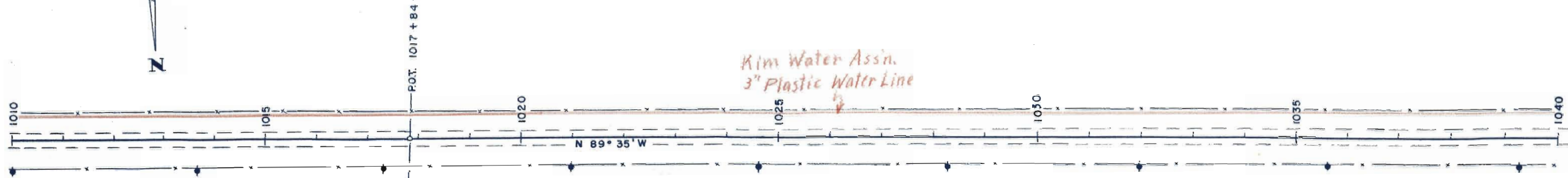
PLAN
 CHECKED
 DATE
 NO. 20267
 1966

PROFILE
 CHECKED
 DATE
 NO. 20267
 1966

N.E. 1/4 SEC. 23

N. W. 1/4 SEC. 33

FED. ROAD DIV. NO.	DIST.	PROJ. NO.	SHEET NO.	TOTAL SHEETS
9	COLO.	05 000 220	23	

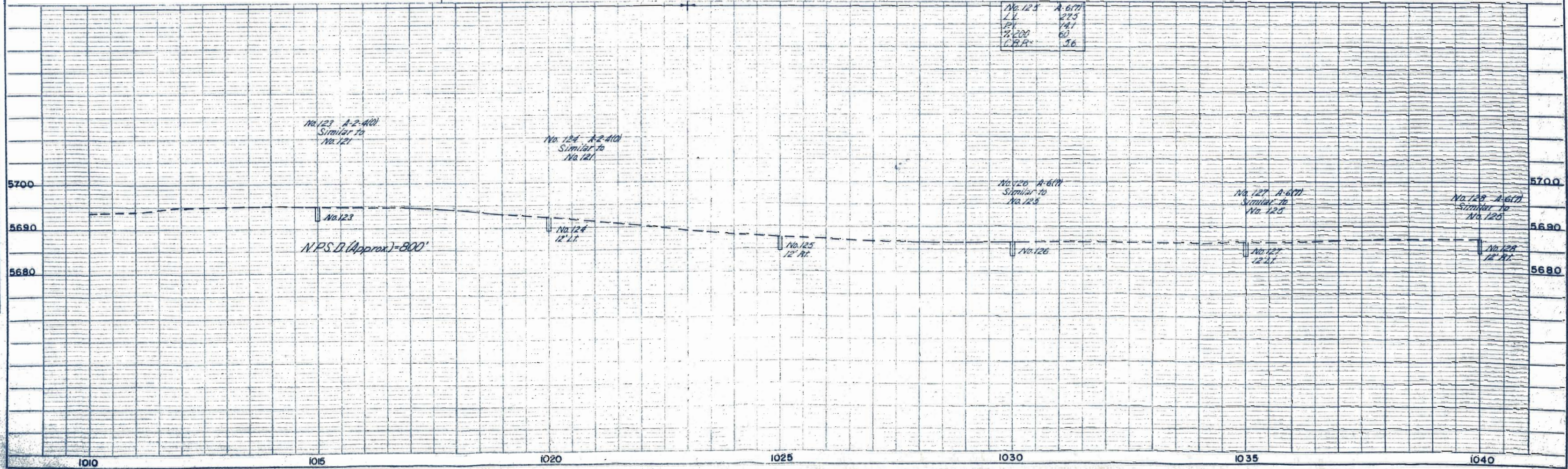


S.E. 1/4 SEC. 28

B.M. # 59
ELEV. 5699.11

B.M. # 60
ELEV. 5685.96

S.W. 1/4 SEC. 28
T 32 S, R 53 W



No. 125	A-600
L.L.	275
P.V.	141
1/2 L.S.	60
C.B.P.	36

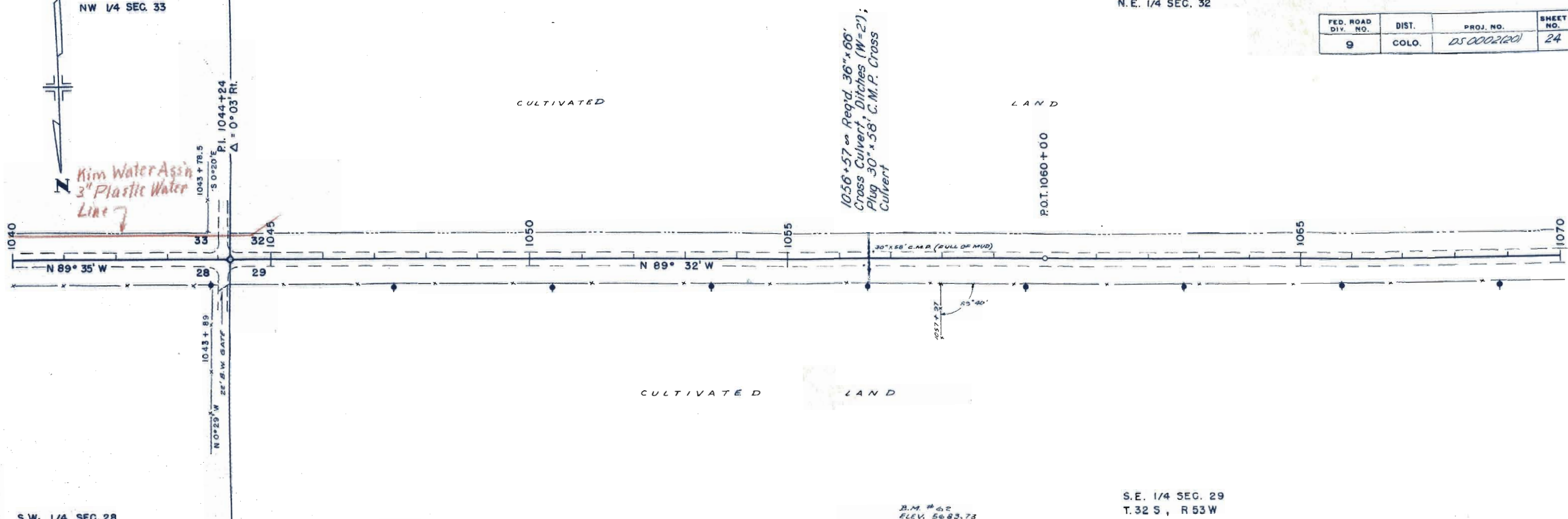
PLAN
SURVEYED
P.LOTTED
NOTE BOOK
NO. 1012

PROFILE
SURVEYED
NOTE BOOK
NO. 1012

NW 1/4 SEC. 33

N.E. 1/4 SEC. 32

FED. ROAD DIV. NO.	DIST.	PROJ. NO.	SHEET NO.	TOTAL SHEETS
9	COLO.	DS 0002120	24	



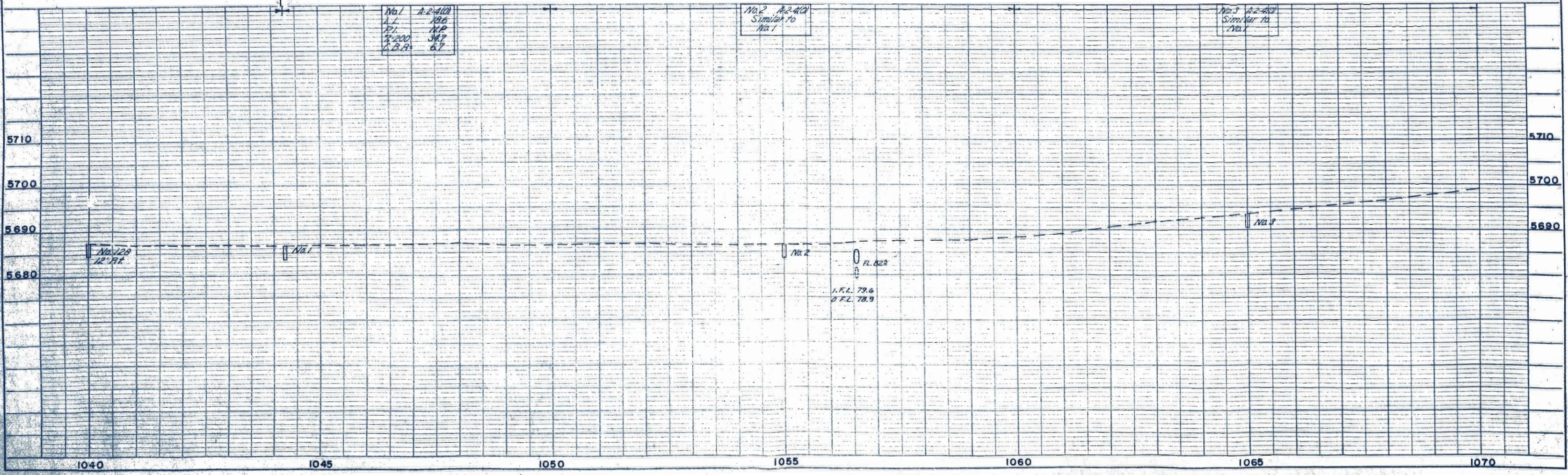
*Kim Water Ass'n
3" Plastic Water
Line 7*

*1056+57 = Req'd. 36" x 66"
Cross Culvert, Ditches (W=2');
Plug 30" x 58" C.M.P. Cross
Culvert*

S.W. 1/4 SEC. 28

S.E. 1/4 SEC. 29
T.32 S, R 53 W

B.M. # 62
ELEV. 5683.73



NOTED
NOTE BOOK ALIGNMENT CHECKED
NO. 2072
RT. OF WAY CHECKED
NO. 22770

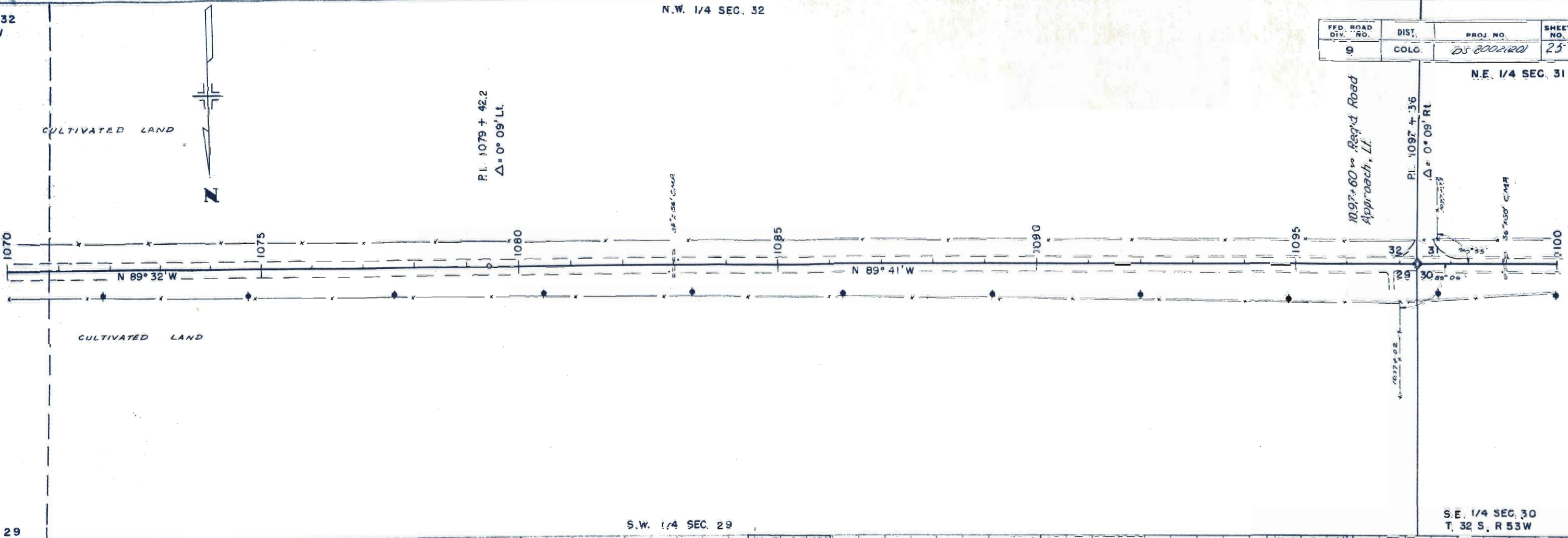
PROFILE
NOTED
NOTE BOOK
NO. 2072
STRUCTURE NOT AT 1043 CHG.

N.E. 1/4 SEC. 32
T32S, R53W

N.W. 1/4 SEC. 32

FED. ROAD DIV. NO.	DIST. COLO.	PROJ. NO.	SHEET NO.	TOTAL SHEETS
9		DS 8002120	25	

N.E. 1/4 SEC. 31



S.E. 1/4 SEC. 29

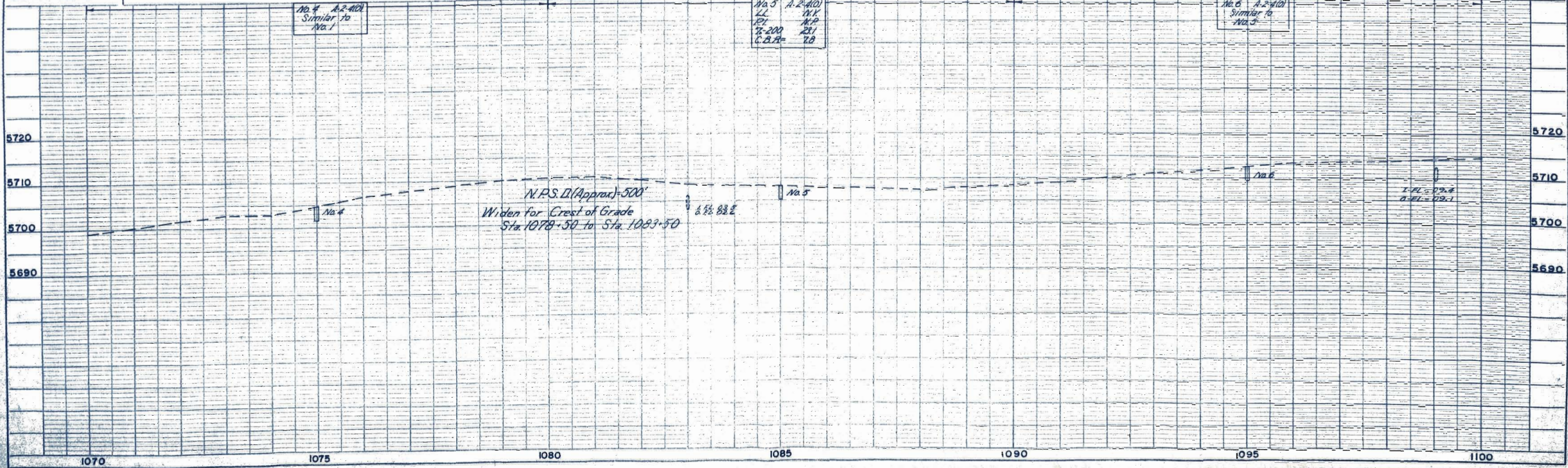
S.W. 1/4 SEC. 29

S.E. 1/4 SEC. 30
T. 32 S., R 53 W

No. 4 A-2-100
Similar to
No. 1

No. 5 A-2-100
LL 11.1
PI 11.1
T-200 23.1
C.B.R. 7.8

No. 6 A-2-100
Similar to
No. 5



PLAN
CHECKED
PLOTTED
NOTE BOOK ALIGNMENT CHECKED
NO. 22776

PROFILE
CHECKED
PLOTTED
NOTE BOOK GRADES CHECKED
S. M. WOOD
NO. 22776

N.E. 1/4 SEC. 31

FED. ROAD DIST. NO.	DIST.	PROJ. NO.	SHEET NO.	TOTAL SHEETS
9	COLO.	DS-00021201	26	

N.W. 1/4 SEC. 31

P.O.T. 1115 + 00

STA 1124+21



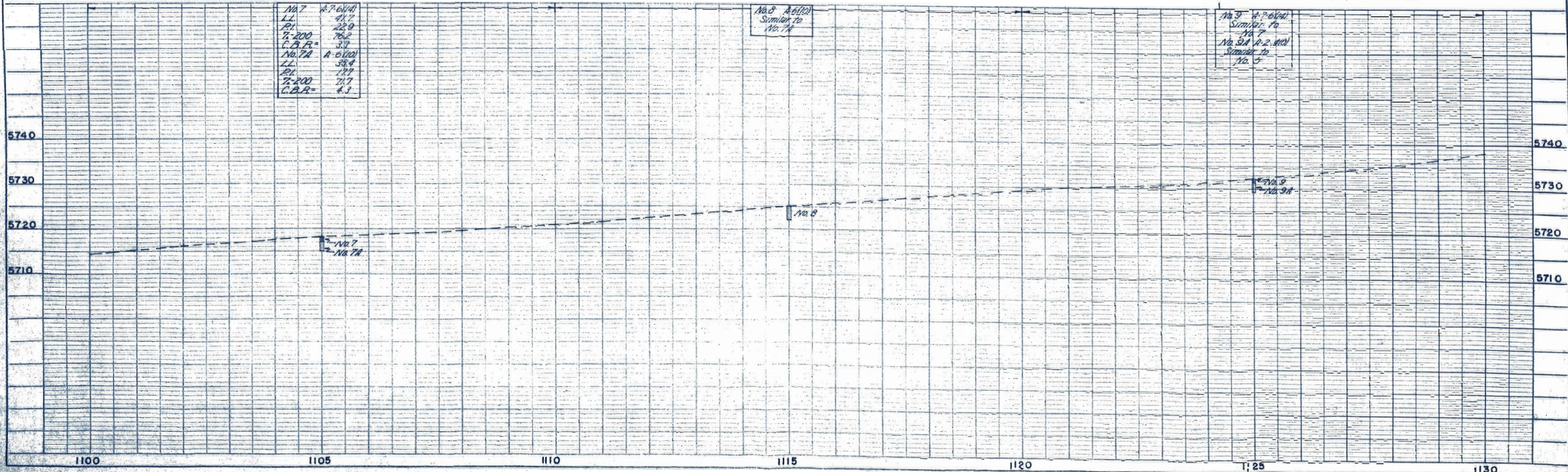
S.E. 1/4 SEC. 30
T 32 S, R 53 W

S.W. 1/4 SEC. 30

No. 7	A-7.6(14)
LL	21.7
PI	22.9
Ts-200	76.2
C.B.R.	3.7
No. 7A	A-6.1(10)
LL	38.4
PI	12.7
Ts-200	21.7
C.B.R.	4.3

No. 8 A-6.1(10)
Similar to No. 7A

No. 9 A-7.6(14)
Similar to No. 7
No. 9A A-2.1(10)
Similar to No. 5



PLAN
 SURVEYED
 PLOTTED
 NOTE BOOK ALIGNMENT CHECKED
 NO. 20278

PROFILE
 SURVEYED
 PLOTTED
 NOTE BOOK GRADES CHECKED
 NO. 20278

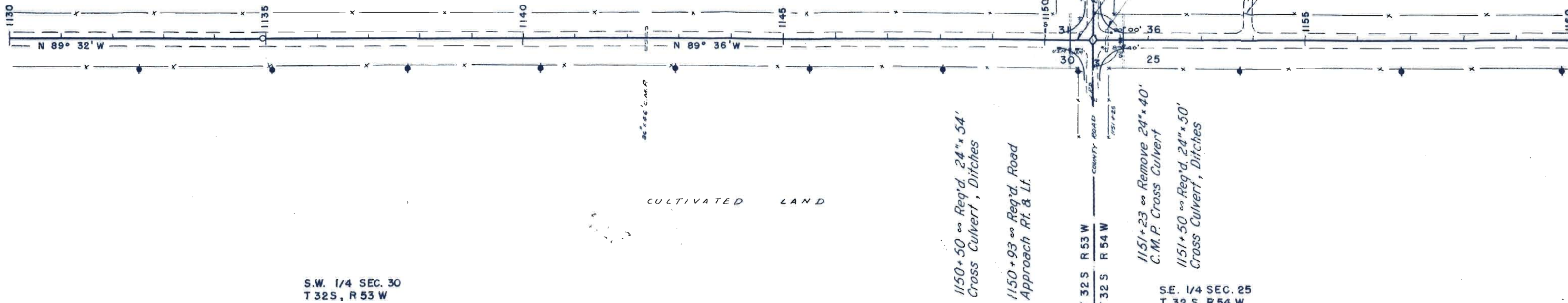
N.W. 1/4 SEC. 31

N.E. 1/4 SEC. 36

FED. ROAD DIV. NO.	DIST.	PROJ. NO.	SHEET NO.	TOTAL SHEETS
9	COLO.	DS0002(20)	27	



P.I. 1134 + 94.6
 $\Delta = 0^{\circ} 04' \text{ LT.}$



S.W. 1/4 SEC. 30
 T 32 S, R 53 W

T 32 S R 53 W
 T 32 S R 54 W

S.E. 1/4 SEC. 25
 T 32 S, R 54 W

1150 + 50 ∞ Req'd. 24" x 54'
 Cross Culvert, Ditches

1150 + 93 ∞ Req'd. Road
 Approach Rt. & Lt.

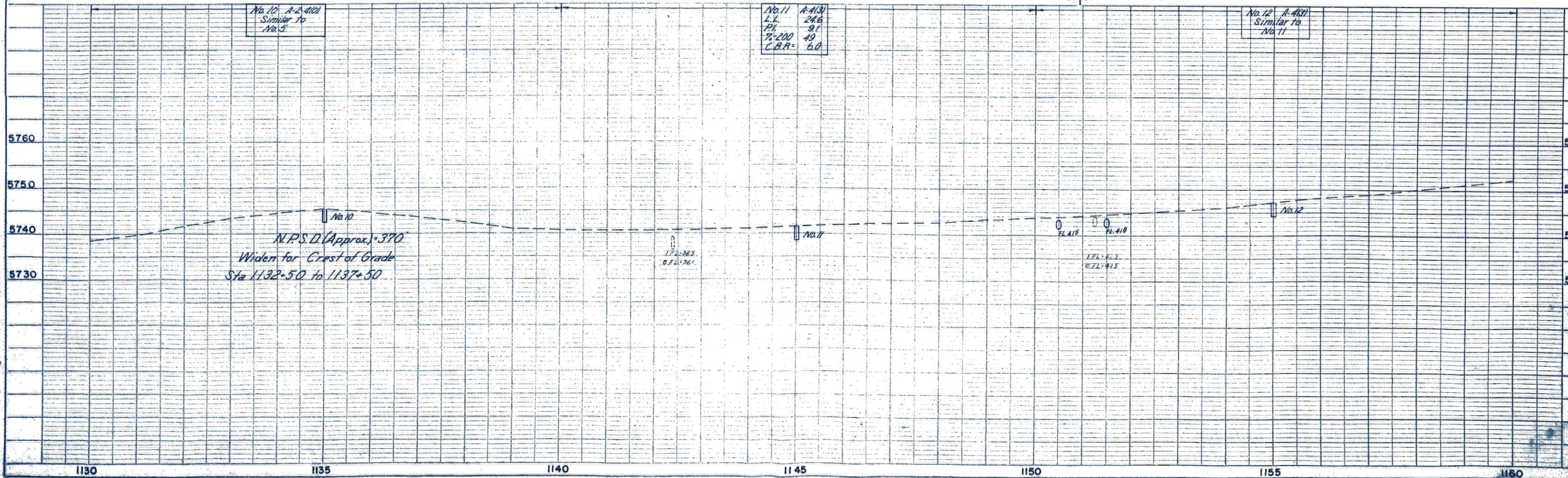
1151 + 23 ∞ Remove 24" x 40'
 C.M.P. Cross Culvert

1151 + 50 ∞ Req'd. 24" x 50'
 Cross Culvert, Ditches

No. 10 A-2-400
 Similar to
 No. 5

No. 11 A-4-3
 L.L. 24.6
 P.I. 91
 % 200 49
 C.B.R. 6.0

No. 12 A-4-3
 Similar to
 No. 11



PLAN
 SURVEYED
 PLOTTED
 NOTE BOOK GRADINGS CHECKED
 NO. 622266

PROFILE
 SURVEYED
 PLOTTED
 NOTE BOOK GRADINGS CHECKED
 NO. 622266

N.E. 1/4 SEC. 36

N.W. 1/4 SEC. 36

FED. ROAD DIV. NO.	DIST.	PROJ. NO.	SHEET NO.	TOTAL SHEETS
9	60LO	OS 0002120	28	



CULTIVATED LAND

P.O.T. 1171 + 00



CULTIVATED LAND

GRAZING LAND

SE 1/4 SEC. 25
T.32S, R.54W

B.M. # 71
ELEV. 5761.52

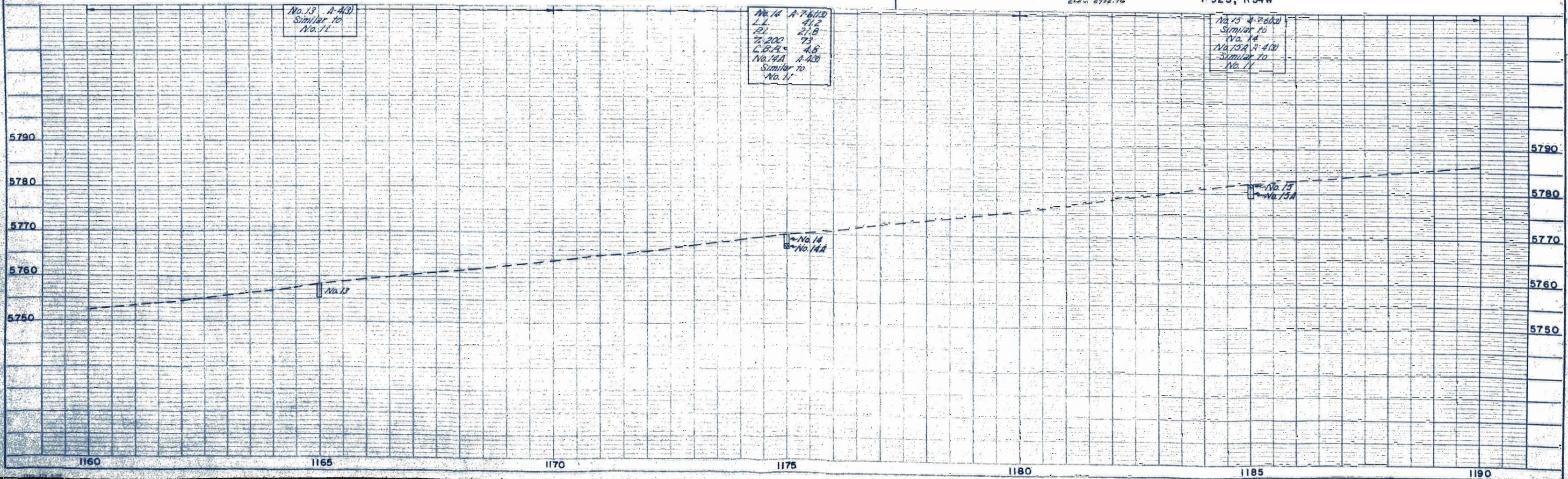
B.M. # 72
ELEV. 5775.76

S.W. 1/4 SEC. 25
T.32S, R.54W

No. 13 A-A(3)
Similar to
No. 11

No. 14 A-7-6(13)
L.L. 41.2
R.L. 21.8
7-200 73
C.B.R. 4.8
No. 14A A-4(3)
Similar to
No. 11

No. 15 A-7-6(2)
Similar to
No. 14
No. 15A A-4(3)
Similar to
No. 11



PLAN	DATE	BY
REVISION		
NO. 1		
NO. 2		
NO. 3		
NO. 4		
NO. 5		
NO. 6		
NO. 7		
NO. 8		
NO. 9		
NO. 10		
NO. 11		
NO. 12		
NO. 13		
NO. 14		
NO. 15		
NO. 16		
NO. 17		
NO. 18		
NO. 19		
NO. 20		
NO. 21		
NO. 22		
NO. 23		
NO. 24		
NO. 25		
NO. 26		
NO. 27		
NO. 28		
NO. 29		
NO. 30		

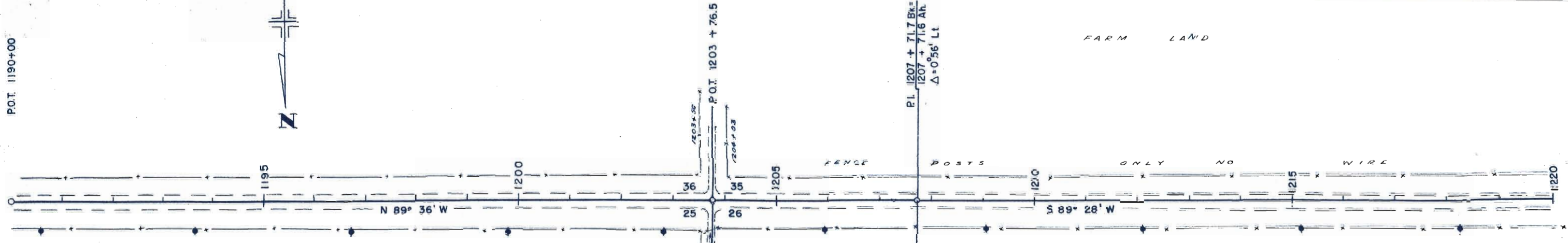
PROFILE	DATE	BY
REVISION		
NO. 1		
NO. 2		
NO. 3		
NO. 4		
NO. 5		
NO. 6		
NO. 7		
NO. 8		
NO. 9		
NO. 10		
NO. 11		
NO. 12		
NO. 13		
NO. 14		
NO. 15		
NO. 16		
NO. 17		
NO. 18		
NO. 19		
NO. 20		
NO. 21		
NO. 22		
NO. 23		
NO. 24		
NO. 25		
NO. 26		
NO. 27		
NO. 28		
NO. 29		
NO. 30		

N.W. 1/4 SEC. 36

N.E. 1/4 SEC. 35

FED. ROAD DIV. NO.	DIST.	PROJ. NO.	SHEET NO.	TOTAL SHEETS
9	COLO.	DS 0002(24)	20	24

P.O.T. 1190+00



S.W. 1/4 SEC. 25
T. 32 S., R. 54 W

S.E. 1/4 SEC. 26

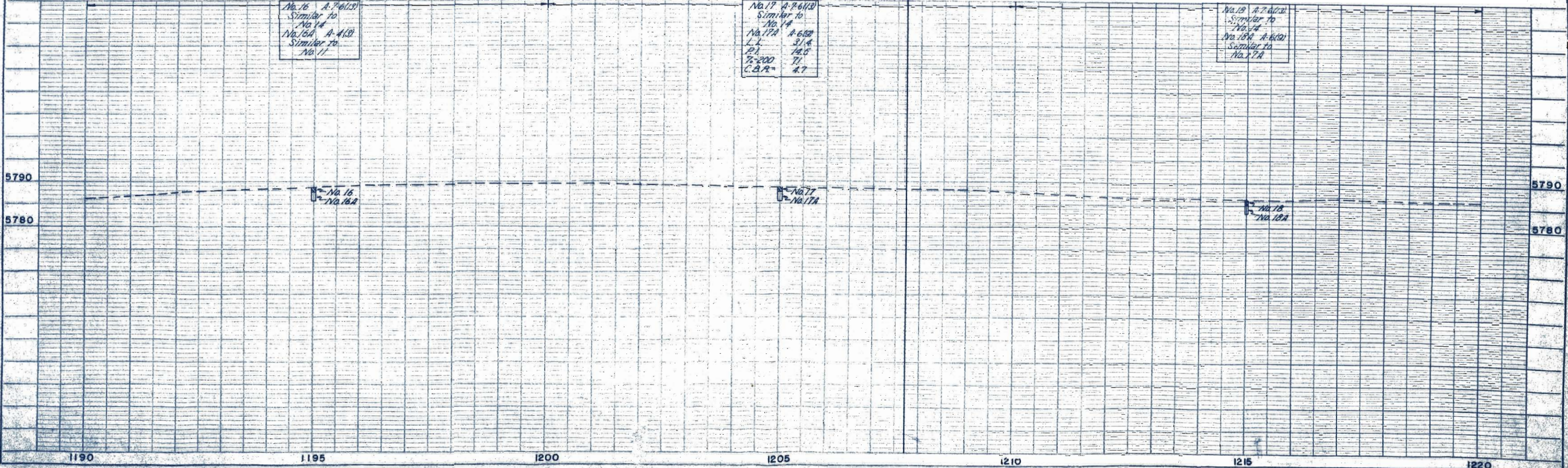
B.M. # 73
ELEV. 5787.43

B.M. # 74
ELEV. 5798.09

No. 16 A-7-6(13)
Similar to
No. 14
No. 16A A-4(13)
Similar to
No. 11

No. 17 A-7-6(13)
Similar to
No. 14
No. 17A A-6(13)
L.L. 3/4
P.I. 14.5
% 200 71
C.B.A. 4.7

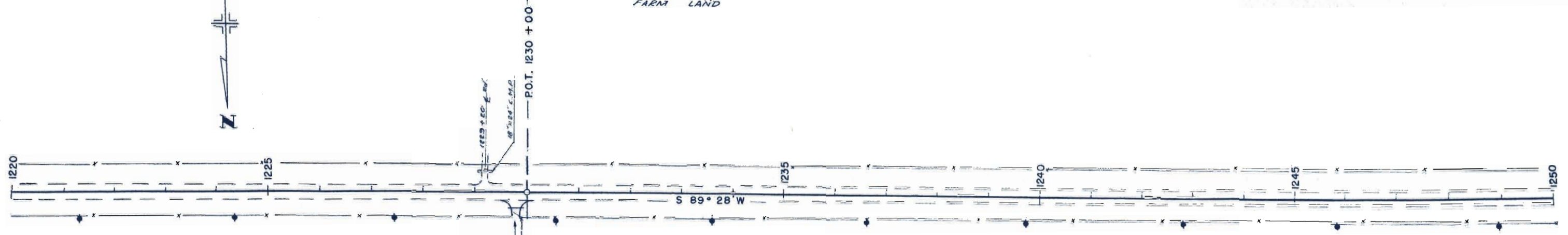
No. 18 A-7-6(13)
Similar to
No. 14
No. 18A A-6(13)
Similar to
No. 17A



PLAN
CHECKED
DATE
NOTE BOOK ALIGNMENT CHECKED
NO. 202266

PROFILE
CHECKED
DATE
NOTE BOOK
NO. 202266
STRUCTURAL INDICATES GRID

FED. ROAD DIST. NO.	DIST.	PROJ. NO.	SHEET NO.	TOTAL SHEETS
9	COLO.	455 0002 (20)	30	



FARM LAND

GRASSING LAND

S.E. 1/4 SEC. 26
T 32 S, R 54 W

S.W. 1/4 SEC. 26
T 32 S, R 54 W

B.M. # 75
ELEV. 5785.1'

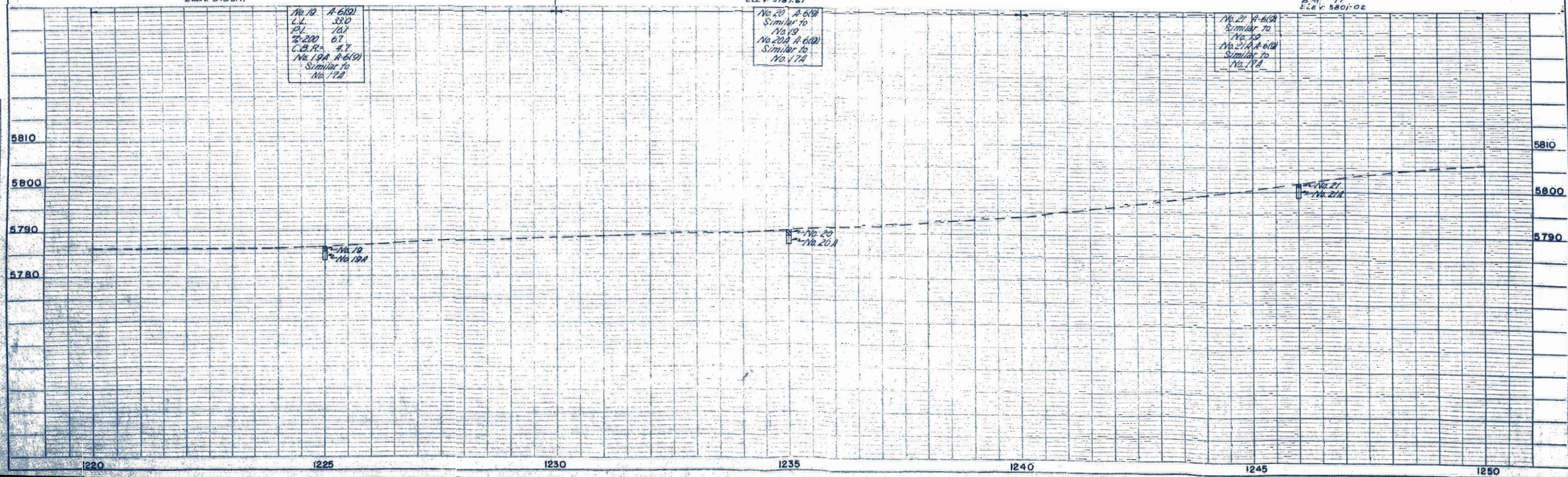
B.M. # 76
ELEV. 5787.67

B.M. # 77
ELEV. 5801.02

No. 19 A-6(9)
L.L. 33.0
I.P.I. 70.1
% 200 67
C.B.R. 4.7
No. 19A A-6(9)
Similar to No. 17A

No. 20 A-6(9)
Similar to No. 19
No. 20A A-6(9)
Similar to No. 17A

No. 21 A-6(9)
Similar to No. 19
No. 21A A-6(9)
Similar to No. 17A



PLAN
CHECKED
DATE
NO. 455 0002 (20)

PROFILE
CHECKED
DATE
NO. 455 0002 (20)

N.W. 1/4 SEC. 35

N.E. 1/4 SEC. 34

FED. ROAD DIV. NO.	DIST.	PROJ. NO.	SHEET NO.	TOTAL SHEETS
9	COLO.	DS 00021201	31	

P.I. 1251 + 00.0
 $\Delta = 0^\circ 01' \text{ Rt.}$

FARM LAND



1256+77 as Req'd. Road Approach, Lt.

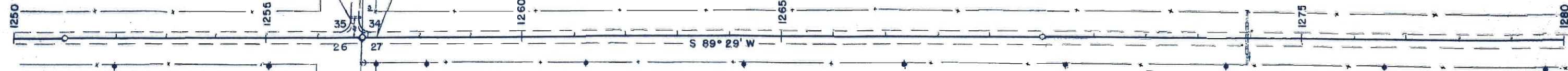
1256+02
1256+03
1256+04

P.O.T. 1256 + 87.8

POWER LINE CROSSES HWY 1257+14 (30' CLEARANCE)

PASTURE LAND

P.O.T. 1270+00



S.W. 1/4 SEC. 26
T 32 S, R 54 W

S.E. 1/4 SEC. 27
T 32 S, R 54 W

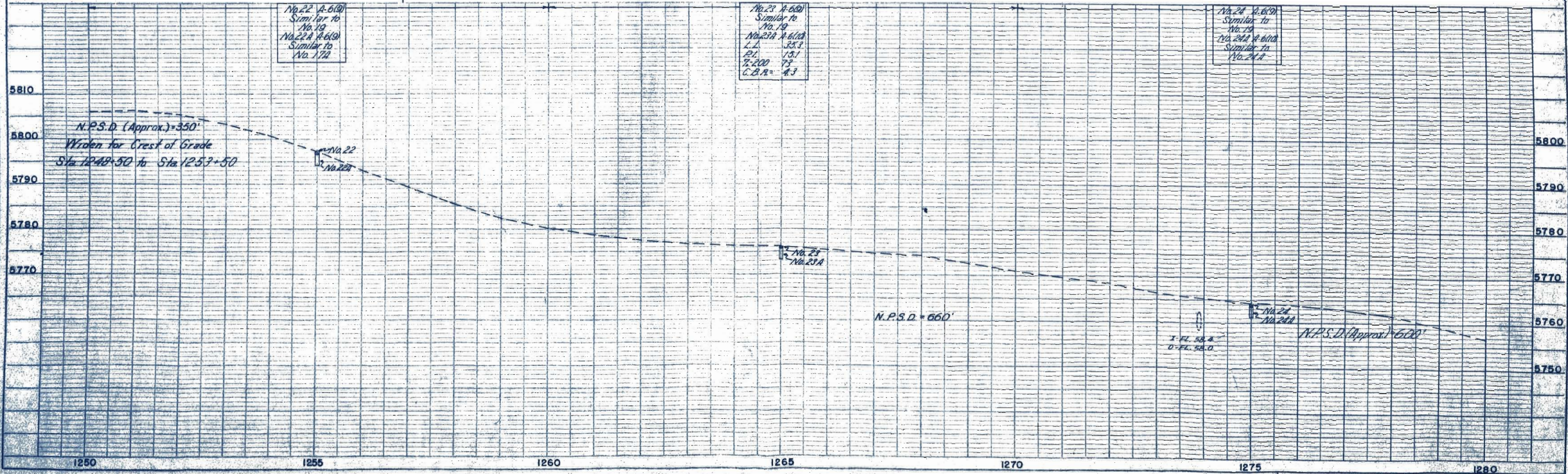
B.M. # 78
ELEV. 5788.36

B.M. # 79
ELEV. 5772.84

No. 22 A-6(9)
Similar to
No. 19
No. 22A A-6(9)
Similar to
No. 17A

No. 23 A-6(9)
Similar to
No. 19
No. 23A A-6(10)
L.L. 35.3
P.I. 15.1
T-200 75
C.B.R. = 4.3

No. 24 A-6(9)
Similar to
No. 19
No. 24A A-6(10)
Similar to
No. 24A



N.P.S.D. (Approx.) = 350'
Widened for Crest of Grade
Sta 1248+50 to Sta 1253+50

N.P.S.D. = 660'

N.P.S.D. (Approx.) = 600'

I - FL. 58.8
O - FL. 58.0

DATE	BY	REVISION

DATE	BY	REVISION

FED. ROAD DIV. NO.	DIST.	PROJ. NO.	SHEET NO.	TOTAL SHEETS
9	COLG.	DS 0002120	32	



1285+00 Req'd. Redeck Bridge
(Details on Sheets 7a, 8)
Structure No. P-23-a

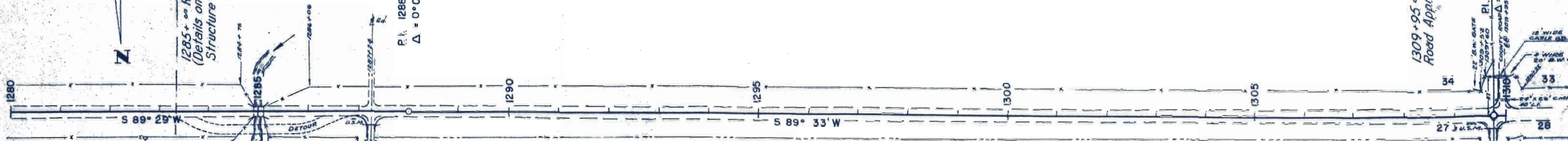
GRAZING LAND

P.I. 1286+00
 $\Delta = 0^{\circ}04' \text{ Rt.}$

GRAZING LAND

1309+95 on Req'd.
Road Approach, Lt.

NE. 1/4 SEC. 33
T 32S, R 54W



1282+ to 1287+ on Req'd. Detour,
Rt.; Remove Detour, Rt.
Remove & Rebuild Fence around
Detour, Rt.; After Detour is no
longer needed; remove & rebuild
Fence at original location.

Masonry Abutments
Timber & Steel Deck
Timber Flooring
Clear Roadway - about 27'
Span - about 20'

1287+24 on Req'd. 36" x 34"
Side Drain & Road Approach, Rt.;
Remove 3' x 3' x 24" W.B.C. Rt.

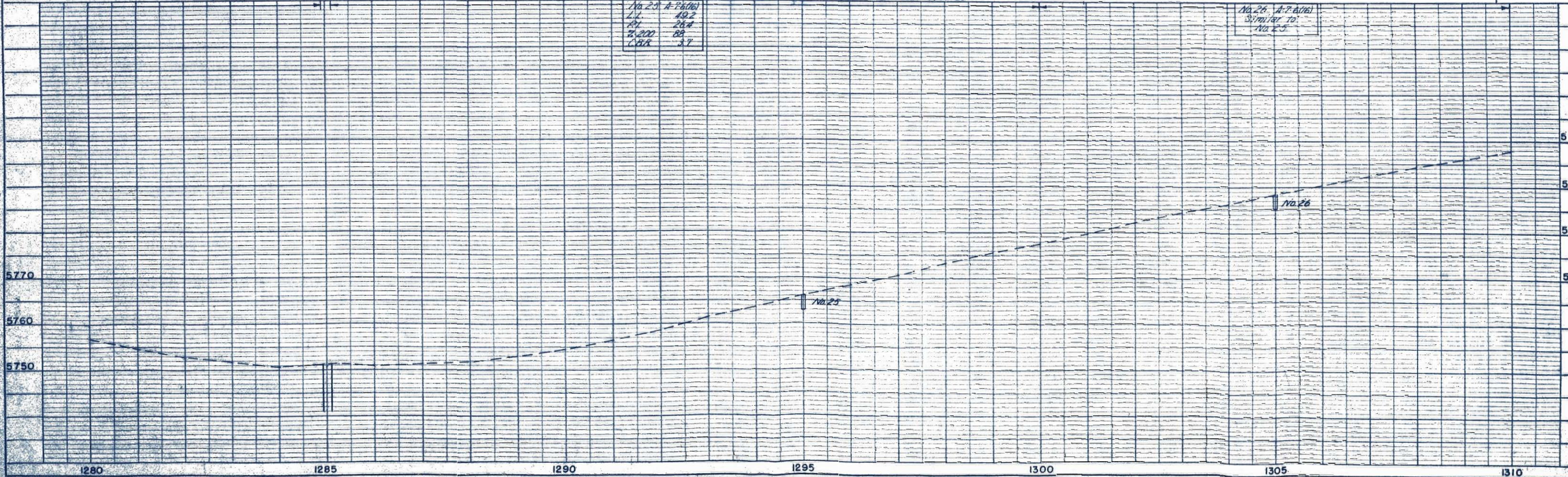
1309+78 on Req'd. 24" x 30" Side
Drain & Road Approach, Rt.

B.M. # 30
ELEV. 5747.23

B.M. # 81
ELEV. 5769.66

No. 23	A-P (1/16)
L.L.	49.2
P.I.	26.4
2,200	88
C&G	17

No. 26 A-P (1/16)
Similar to
No. 25

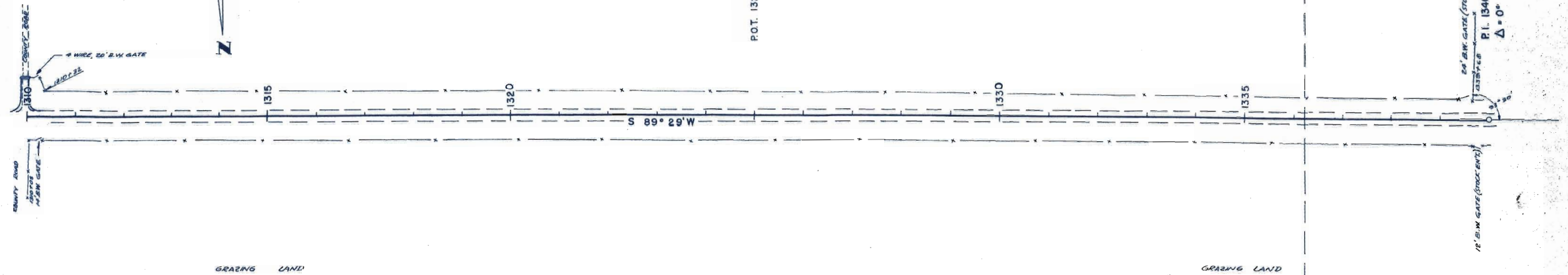


PLAN	DATE
DESIGNED	
PLOTTED	
NOTE BOOK	
ALIGNED CHECKED	
NO. 23/24	
BY	
DATE	

PROFILE	DATE
DESIGNED	
PLOTTED	
NOTE BOOK	
ALIGNED CHECKED	
NO. 23/24	
BY	
DATE	

FED. ROAD DIV. NO.	DIST.	PROJ. NO.	SHEET NO.	TOTAL SHEETS
9	COLO.	DS 0002120	33	

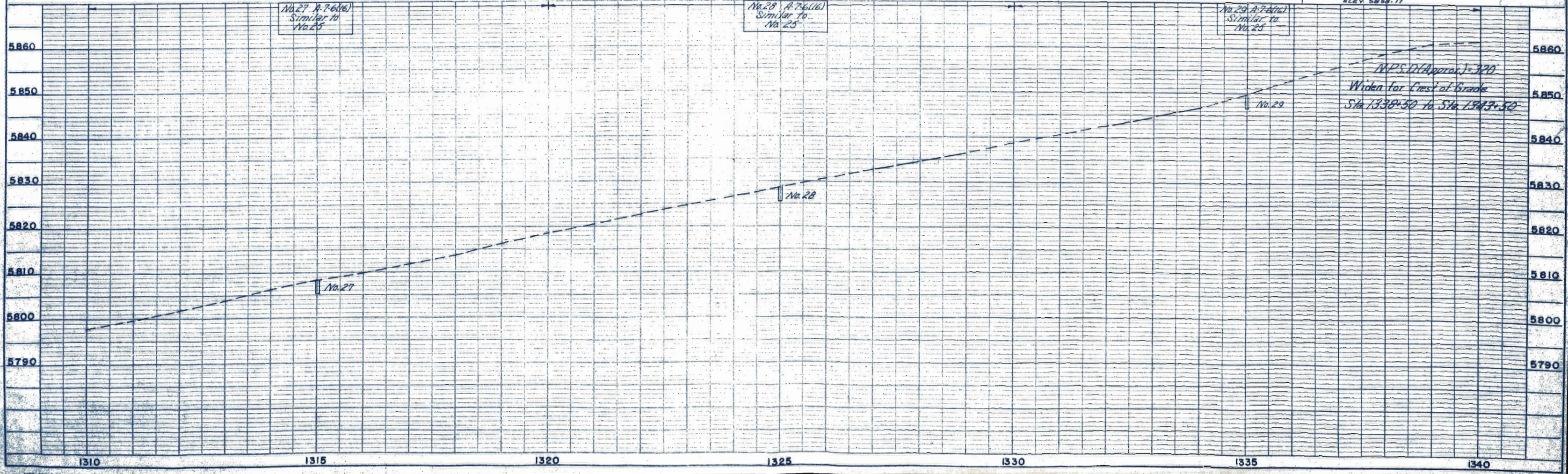
N.W. 1/4 SEC. 33



S.M. #82
ELEV. 5800.79

S.E. 1/4 SEC. 28
T32 S, R 54 W
S.M. #83
ELEV. 5823.28

S.W. 1/4 SEC. 28
S.M. #84
ELEV. 5859.17



PLAN
 CHECKED
 DATE
 BY
 NOTE BOOK ALIGNED CHECKED
 NO. 22266

PROFILE
 CHECKED
 PLOTTED
 NOTE BOOK GRADINGS CHECKED
 NO. 22266

N.W. 1/4 SEC. 33
T 32 S, R 54 W

FED. ROAD DIV. NO.	DIST.	PROJ. NO.	SHEET NO.	TOTAL SHEETS
9	COLO.	DS 0002(20)	34	

P.I. 1340 + 00
 $\Delta = 0^\circ 03' \text{ Rt.}$

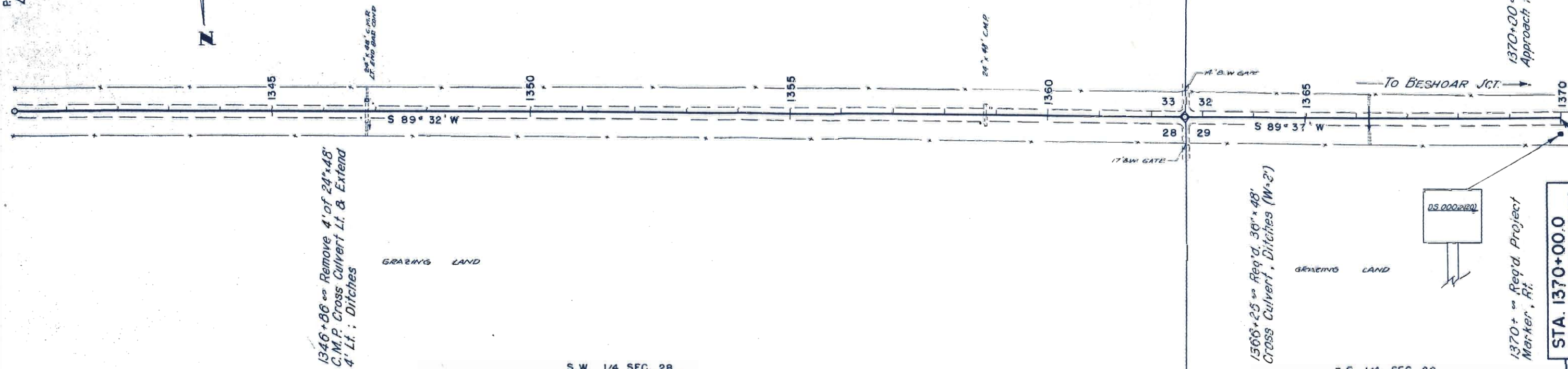


GRAZING LAND

GRAZING LAND

N.E. 1/4 SEC. 32

1370+00 as Req'd Approach to Project



1346+86 as Req'd Remove 4' of 24" x 48" C.M.P. Cross Culvert Lt. & Extend 4' Lt.; Ditches

1366+25 as Req'd Cross Culvert, 36" x 48" Ditches (W=2')

1370+00 as Req'd Project Marker, Rt.

STA. 1370+00.0
END DS 0002 (20)

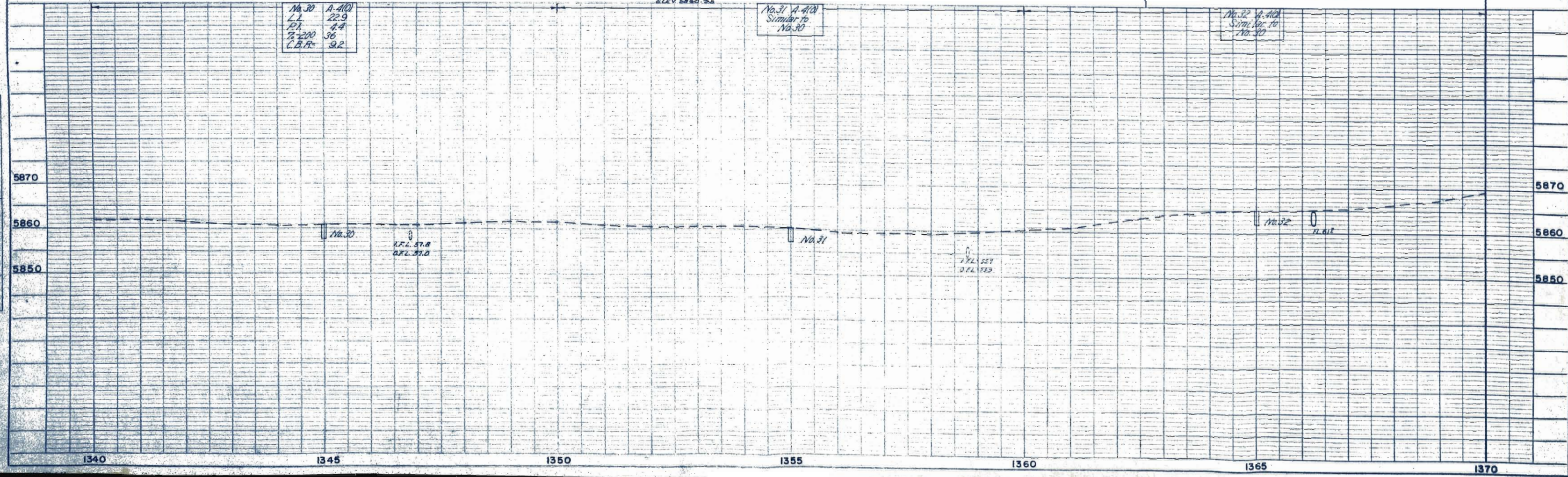
S.W. 1/4 SEC. 28
B.M. # 35
ELEV. 5860.25

S.E. 1/4 SEC. 29

No. 30	A-400
L.L.	22.9
P.I.	4.4
Z-200	56
C.B.R.	9.2

No. 31 A-400
Similar to No. 30

No. 32 A-400
Similar to No. 30



PLAN	DATE
DESIGNED	
PLOTTED	
NOTE BOOK ALIGNED CHECKED	
NO. 2272	

PROFILE	DATE
DESIGNED	
PLOTTED	
NOTE BOOK B.M. # 35	
NO. 2272	

Excavation
Cu. Yds. Area

Embankment
Cu. Yds. Area

Excavation
Cu. Yds. Area

Embankment
Cu. Yds. Area

FED. ROAD DIVISION NO.	DISTRICT	PROJ. NO.	SHEET NO.	TOTAL SHEETS
9	COLO.	03 0002 (20)	35	

SUMMARY OF EARTHWORK QUANTITIES - D50002 (20)

EXCAVATION

FROM CROSS SECTIONS	3 Cu. Yds.
BORROW	3,172 Cu. Yds.
ESTIMATED FOR SUBSIDENCE	318 Cu. Yds.
FROM LIST OF STRUCTURES AS EMBANKMENT	940 Cu. Yds.
ESTIMATED FOR COVERING ENDS OF CULVERTS	130 Cu. Yds.
<u>∅ SUB-TOTAL</u>	<u>4,563 Cu. Yds.</u>

UNCLASSIFIED DITCH EXCAVATION

FROM LIST OF STRUCTURES 36 CU. YDS.

FROM LIST OF STRUCTURES AS EXCAVATION	640 Cu. Yds.
<u>TOTAL</u>	<u>5,203 Cu. Yds.</u>

EMBANKMENT

FROM CROSS SECTIONS	2,646 Cu. Yds.
---------------------	----------------

EMBANKMENT X FACTOR

3,175 Cu. Yds.

STATION YARD OVERHAUL

FROM MASS DIAGRAM	24,992 Sta. Yds.
ESTIMATED FOR SUBSIDENCE	2,500 Sta. Yds.
ESTIMATED FOR STRUCTURE BACKFILL	2,651 Sta. Yds.
<u>TOTAL</u>	<u>30,143 Sta. Yds.</u>

YARD MILE OVERHAUL

FROM MASS DIAGRAM	233 Yd. Mi.
ESTIMATED FOR SUBSIDENCE	24 Yd. Mi.
ESTIMATED FOR STRUCTURE BACKFILL	1,316 Yd. Mi.
<u>TOTAL</u>	<u>1,573 Yd. Mi.</u>

COMPACTION (Modified)

∅ EXCAVATION SUB-TOTAL (SEE ABOVE)	4,563 Cu. Yds.
BASE OF CUTS AND FILLS	2,841 Cu. Yds.
BLADING AREAS	29,276 Cu. Yds.
DIRE. RT. OF STA. ROAD	20 Cu. Yds.
<u>TOTAL</u>	<u>36,700 Cu. Yds.</u>