

COLORADO DEPARTMENT OF HIGHWAYS

PLAN AND PROFILE OF PROPOSED
FEDERAL AID PROJECT NO. DS 0153 (II)
STATE HIGHWAY NO. 145
SAN MIGUEL COUNTY
RIGHT OF WAY

INDEX OF SHEETS

- 1 TITLE SHEET
- 2 TABULATION OF PROPERTIES
- 3-7 PLAN & PROFILE SHEETS
- 8 RIGHT OF WAY MAP
- 9 OWNERSHIP MAP

**FILE COPY TO BE
 REMOVED FROM OFFICE**

**FILE COPY TO BE
 REMOVED FROM OFFICE**

PROJECT NO.	DIVISION	PROJECT NO.	SHEET
9	COLORADO	DS 0153 (II)	1

RIGHT OF WAY

CONVENTIONAL SIGNS

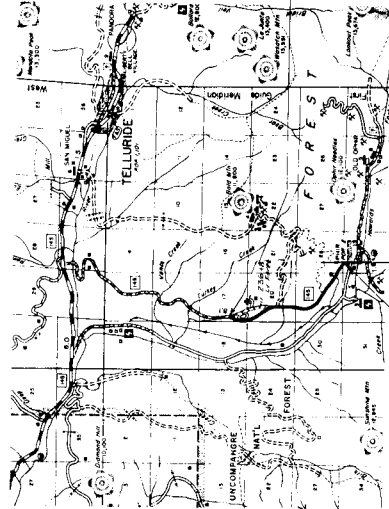
- CENTER LINE
- RIGHT OF WAY LINE
- COUNTY LINE
- RAILROAD LINE
- LAND LINES
- RAILROAD
- CONTRACTOR'S FENCE
- COMMUNAL FENCE
- SNOW FENCE
- TELEPHONE & TELEGRAPH LINES
- DETOUR
- PRESENT ROAD (When Shown)

SCALE OF ORIGINAL DRAWINGS

- ON PLAN 1" = 100'
- ON PROFILE 1" = 10' HORIZONTAL
1" = 10' VERTICAL
- GRADE LINE ON PROFILES SHOWN AS GRADE
- GROSS LENGTH OF PROJECT - 4,308 ± FT. ± 2.70 M.
- NET LENGTH OF PROJECT - 1,700 ± FT. ± 0.51 M.

**FILE COPY TO BE
 REMOVED FROM OFFICE**

OFF FILE



**FILE COPY TO BE
 REMOVED FROM OFFICE**

SEE SPECIAL PROVISIONS FOR NOTICE TO BIDDERS

STA 265+70.0 - END D.S.0153 (I)

STA 120+00.0 - BEGIN D.S.0153 (I)
 - END S.O.153 (0)

COLORADO
 DEPARTMENT OF HIGHWAYS

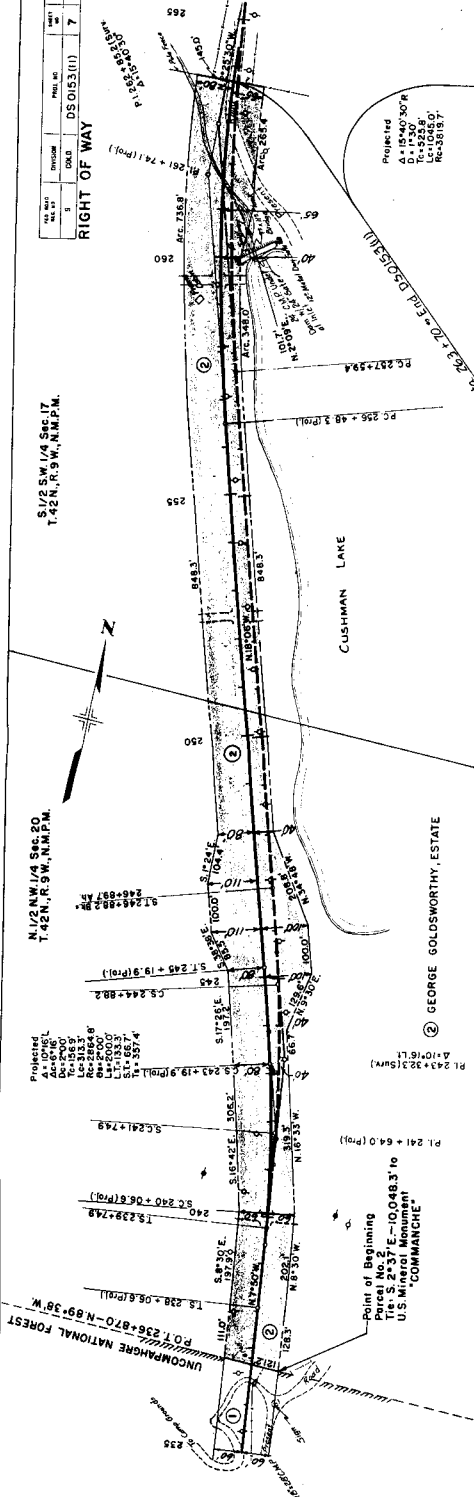
APPROVED
 CHIEF ENGINEER

APPROVED
 DEPARTMENT OF COMMERCE
 BUREAU OF PUBLIC WORKS

APPROVED
 DIVISION ENGINEER

DATE	3	PROJECT	DS0183(1)	7
NO. 1	3	DIVISION	DS0183(1)	7

RIGHT OF WAY



N 1/2 NW 1/4 Sec. 20
T. 42N., R. 9 W., N.M.P.M.

N 1/2 NW 1/4 Sec. 20
T. 42N., R. 9 W., N.M.P.M.

Project
A=10' DEL
AC=5' 0"
76-106' 9"
Re=28264.8'
L=2000'
L1=125.3'
L2=359.4'S=1248.288
246+68.7
S=1248.288
246+68.7

Project
A=10' DEL
AC=5' 0"
76-106' 9"
Re=28264.8'
L=2000'
L1=125.3'
L2=359.4'S=1248.288
246+68.7
S=1248.288
246+68.7

Project
A=10' DEL
AC=5' 0"
76-106' 9"
Re=28264.8'
L=2000'
L1=125.3'
L2=359.4'S=1248.288
246+68.7
S=1248.288
246+68.7

Project
A=10' DEL
AC=5' 0"
76-106' 9"
Re=28264.8'
L=2000'
L1=125.3'
L2=359.4'S=1248.288
246+68.7
S=1248.288
246+68.7

Project
A=10' DEL
AC=5' 0"
76-106' 9"
Re=28264.8'
L=2000'
L1=125.3'
L2=359.4'S=1248.288
246+68.7
S=1248.288
246+68.7

Project
A=10' DEL
AC=5' 0"
76-106' 9"
Re=28264.8'
L=2000'
L1=125.3'
L2=359.4'S=1248.288
246+68.7
S=1248.288
246+68.7

Project
A=10' DEL
AC=5' 0"
76-106' 9"
Re=28264.8'
L=2000'
L1=125.3'
L2=359.4'S=1248.288
246+68.7
S=1248.288
246+68.7

Project
A=10' DEL
AC=5' 0"
76-106' 9"
Re=28264.8'
L=2000'
L1=125.3'
L2=359.4'S=1248.288
246+68.7
S=1248.288
246+68.7

Project
A=10' DEL
AC=5' 0"
76-106' 9"
Re=28264.8'
L=2000'
L1=125.3'
L2=359.4'S=1248.288
246+68.7
S=1248.288
246+68.7

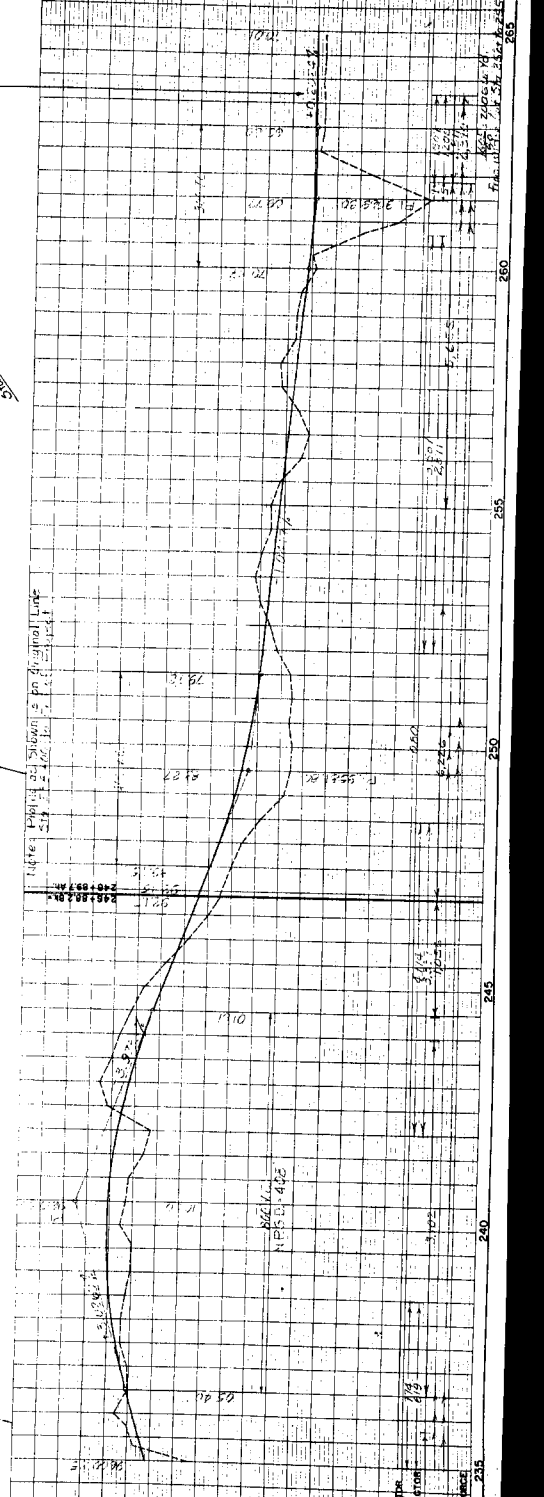
Project
A=10' DEL
AC=5' 0"
76-106' 9"
Re=28264.8'
L=2000'
L1=125.3'
L2=359.4'S=1248.288
246+68.7
S=1248.288
246+68.7

Project
A=10' DEL
AC=5' 0"
76-106' 9"
Re=28264.8'
L=2000'
L1=125.3'
L2=359.4'S=1248.288
246+68.7
S=1248.288
246+68.7

Project
A=10' DEL
AC=5' 0"
76-106' 9"
Re=28264.8'
L=2000'
L1=125.3'
L2=359.4'S=1248.288
246+68.7
S=1248.288
246+68.7

Project
A=10' DEL
AC=5' 0"
76-106' 9"
Re=28264.8'
L=2000'
L1=125.3'
L2=359.4'S=1248.288
246+68.7
S=1248.288
246+68.7

Project
A=10' DEL
AC=5' 0"
76-106' 9"
Re=28264.8'
L=2000'
L1=125.3'
L2=359.4'S=1248.288
246+68.7
S=1248.288
246+68.7



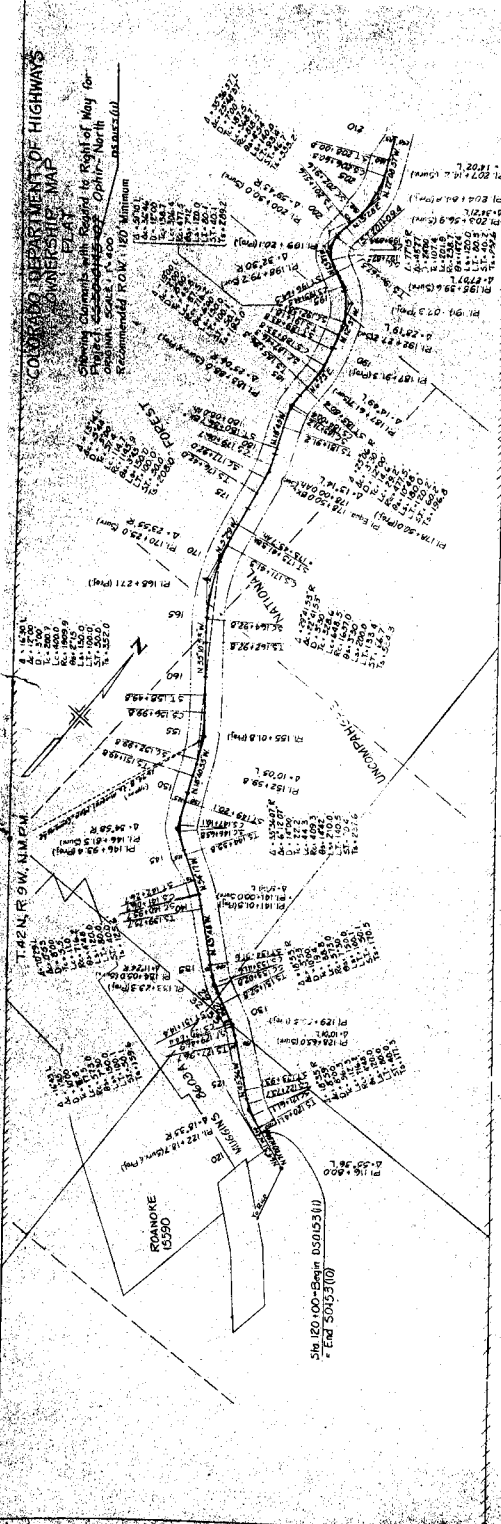
9810	9820	9830	9840	9850	9860	9870	9880	9890	9900
------	------	------	------	------	------	------	------	------	------

Project
A=10' DEL
AC=5' 0"
76-106' 9"
Re=28264.8'
L=2000'
L1=125.3'
L2=359.4'S=1248.288
246+68.7
S=1248.288
246+68.7

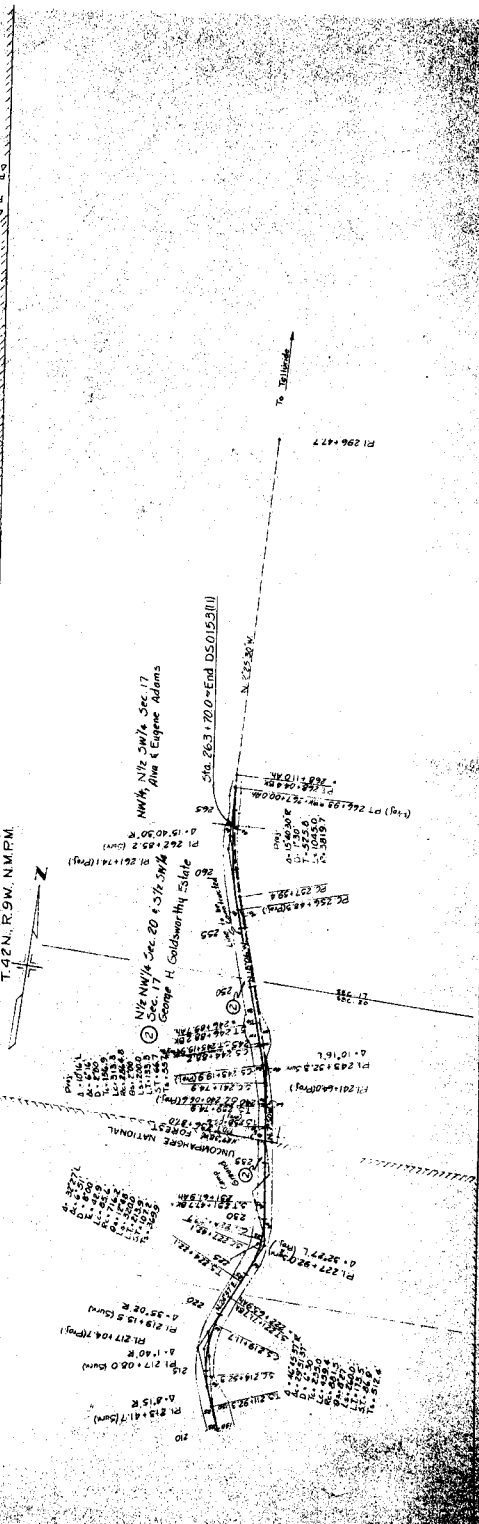
COUNTY DEPARTMENT OF HIGHWAYS
UNIVERSITY MAP

Planning Commission with Board of Right of Way for
Approval, South 1/4-60
Recommended FROM 1/27 Minimum
DASUST/01

T42P R 9W, NW/4



T42P R 9W, NW/4



T42P R 9W, NW/4