

See Standard M-100-A for STANDARD SYMBOLS

STATE DEPARTMENT OF HIGHWAYS

DIVISION OF HIGHWAYS - STATE OF COLORADO

ROW under FAP 9-R-7
 & FAP 9-R-8; P.E. under
 ER-ERFO 108(3)

FEDERAL ROAD REGION NO.	DIVISION	PROJECT NO.	SHEET NO.
VIII	COLORADO	ER-ERFO 108(4)	1

TITLE SHEET

PLAN AND PROFILE OF PROPOSED

FEDERAL AID PROJECT NO. ER-ERFO 108(4)

STATE HIGHWAY NO. 34

LARIMER COUNTY

SCALES OF ORIGINAL DRAWINGS
 ON PLAN, 1 IN. = 100 FT.
 ON PROFILE { 1 IN. = 100 FT. HORIZONTAL
 1 IN. = 10 FT. VERTICAL

AS CONSTRUCTED		
NO REVISIONS	REVISED 5-12-77	VOID

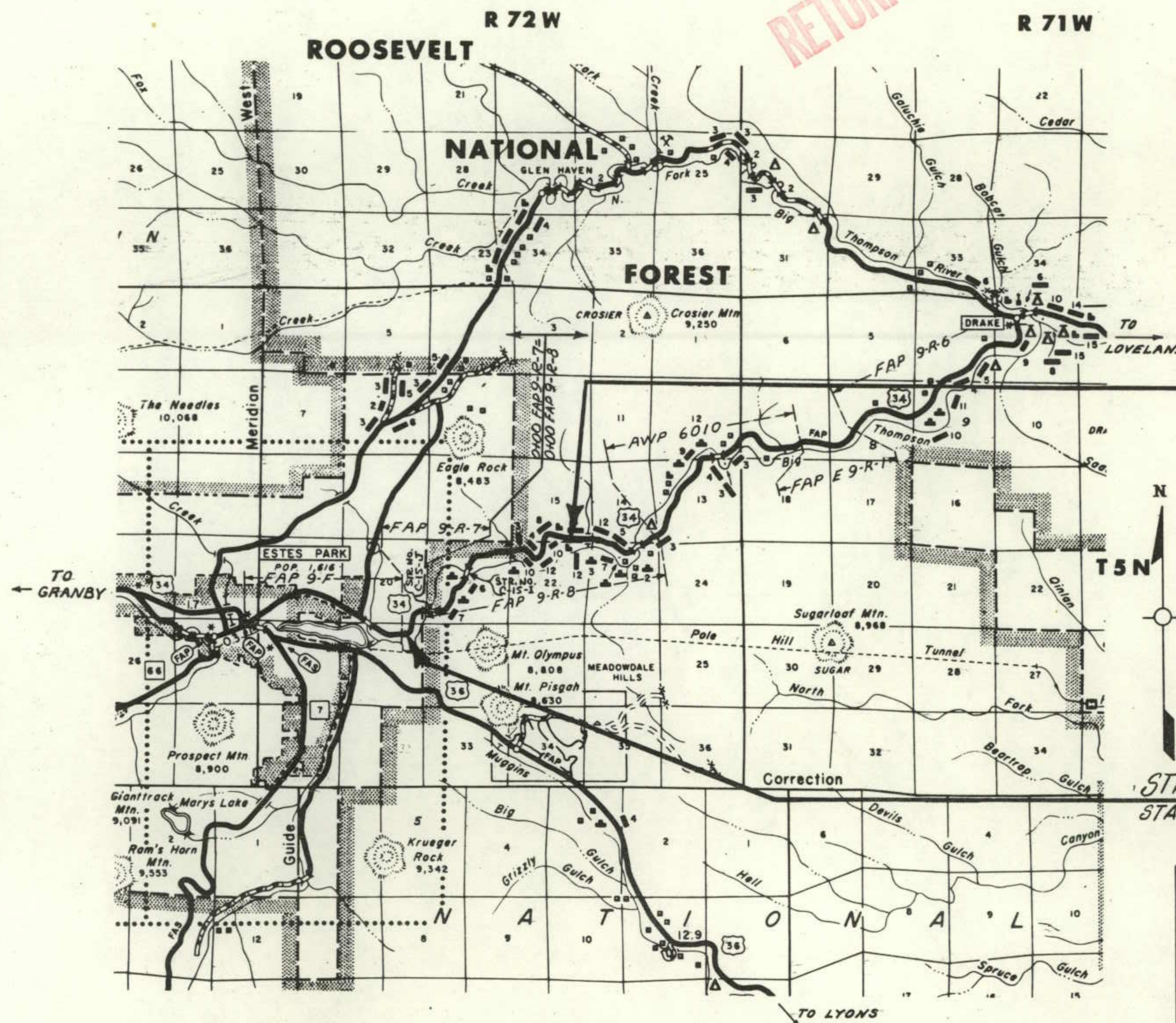
R-1 Rev. Index 1-4-77 R.L.M.

R-1 INDEX OF SHEETS

SHEET NO.			
1	TITLE PAGE, SKETCH MAP, TABULATION OF LENGTH AND DESIGN DATA		
2	TYPICAL SECTIONS, GENERAL NOTES		
3-4	SUMMARY OF APPROXIMATE QUANTITIES		
5	SURFACING PLAN, DELINEATORS, DETAIL OF RIPRAP, DETAIL OF C.B.C. WINGWALL LAYOUT AND DETAIL OF GUARD RAIL REFLECTOR-TAB.	R-1	
6-7	STRUCTURE QUANTITIES		
7A	CBC DEBRIS DEFLECTING WEBWALL, STA. 71+	R-1	
8-14	ALIGNMENT PLAN AND PROFILE SHEETS		
15-50	CROSS SECTION SHEETS		
7A	NO REVISIONS		
M-100-A	STANDARD SYMBOLS		5-11-73
M-203-SC	SUPERELEVATION OF CURVES - CROWNED HIGHWAYS		1-6-77
M-206-AB	EXCAVATION AND BACKFILL FOR STRUCTURES	(3 SHEETS)	4-16-76
M-500-A	LETTERS AND FIGURES FOR STRUCTURE NUMBERS		3-28-75
M-601-BC1	SINGLE CONCRETE BOX CULVERT		9-09-74
M-601-BC2	DOUBLE CONCRETE BOX CULVERT		9-09-74
M-601-L	HEADWALL, INTERCEPTING HEADWALL AND CULVERT OUTLET PAVING		3-31-75
M-601-WW	WINGWALLS FOR PIPE OR BOX CULVERT		3-26-76
M-603-CA	CONCRETE AND METAL END SECTIONS		8-21-75
M-603-MA	METAL CULVERT PIPE - H-20 LOADING		8-20-75
M-604-BA	INLET, TYPE C		3-04-76
M-604-DA	STEPS FOR MANHOLES AND INLETS		9-20-76
M-604-H	INLET, TYPE D		10-31-74
M-606-AB	GUARD RAIL TYPE 3	(4 SHEETS)	6-08-76
M-609-A	CURBS AND GUTTERS		11-29-76
M-614-TB	TRAFFIC SIGNING FOR HIGHWAY CONSTRUCTION	(3 SHEETS)	11-22-71
S-612-51A	TYPICAL DELINEATOR INSTALLATIONS		10-26-72
S-614-52A	BARRICADES, DRUMS AND VERTICAL PANEL CHANNELIZING DEVICES		12-04-74

AS CONSTRUCTED PLANS
 RETURN TO DIST. 4 DESIGN

STATION TO STATION		ROADWAY LIN. FT.
32+00 BEGIN ER-ERFO 108(4) = 32+00 ON FAP NO. 9-R-7		3,188.0
0+12		
0+00 BEGIN FAP NO. 9-R-7 = 0+00 BEGIN FAP NO. 9-R-8		102.2
0+90.2		727.2
8+17.4 BK 8+04.4 AH	EQUATION	1,507.5
23+17.9 BK 23+13.9 AH	EQUATION	1,654.7
39+68.6 BK 39+64.1 AH	EQUATION	740.9
47+05.0 48+07.2	BRIDGE C-15-I	102.2
64+03.7 BK 64+04.4 AH	EQUATION	1,596.5
74+54.8 BK 74+69.0 AH	EQUATION	1,050.4
100+93.2 BK 100+83.6 AH	EQUATION	2,624.2
113+69.7 BK 113+68.4 AH	EQUATION	1,286.1
131+00 END ER-ERFO 108(4) = 131+00 ON FAP NO. 9-R-8		1,731.6
TOTAL		16,311.5
SUMMARY		
ROADWAY	LIN. FT.	MILES
	16,311.5	3.089
TOTAL (GROSS AND NET LENGTH)		16,311.5 3.089
DESIGN DATA		
MAXIMUM DEGREE OF CURVE	20°00'	
MAXIMUM GRADE	6.00%	
MINIMUM SSD HORIZONTAL	200'	
MINIMUM SSD VERTICAL	36.5'	
MAXIMUM DESIGN SPEED	30 MPH	
1976 DESIGN TRAFFIC VOLUME	ADT 2950 DHV 826	



STA. 131+00-ENDER-ERFO 108(4) =
 STA. 131+00 ON F.A.P. No. 9-R-8

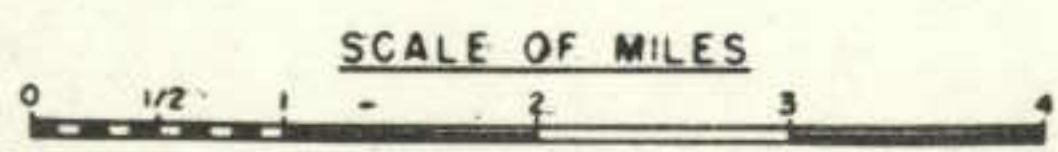
STA. 32+00-BEG. ER-ERFO 108(4)
 STA. 32+00 ON F.A.P. No. 9-R-7



DIVISION OF HIGHWAYS
 APPROVED: *E. J. Haase* 10/18/76
 CHIEF ENGINEER DATE

AS CONSTRUCTED INFORMATION
 CONTRACTOR *H. E. Lowdermilk Co.*
 Resident ENGINEER *DONALD B. ATKINS*
 (Project or Resident) *FLOYD STARKJOHANN*
 PROJECT STARTED 2-21-77
 PROJECT COMPLETED 5-12-77
 AS CONSTRUCTED PLANS APPROVED *J. Peterson*
D.C.E. 7/22/77
 TITLE DATE

DEPARTMENT OF TRANSPORTATION
 FEDERAL HIGHWAY ADMINISTRATION
 APPROVED: _____ DATE _____
 DIVISION ADMINISTRATOR



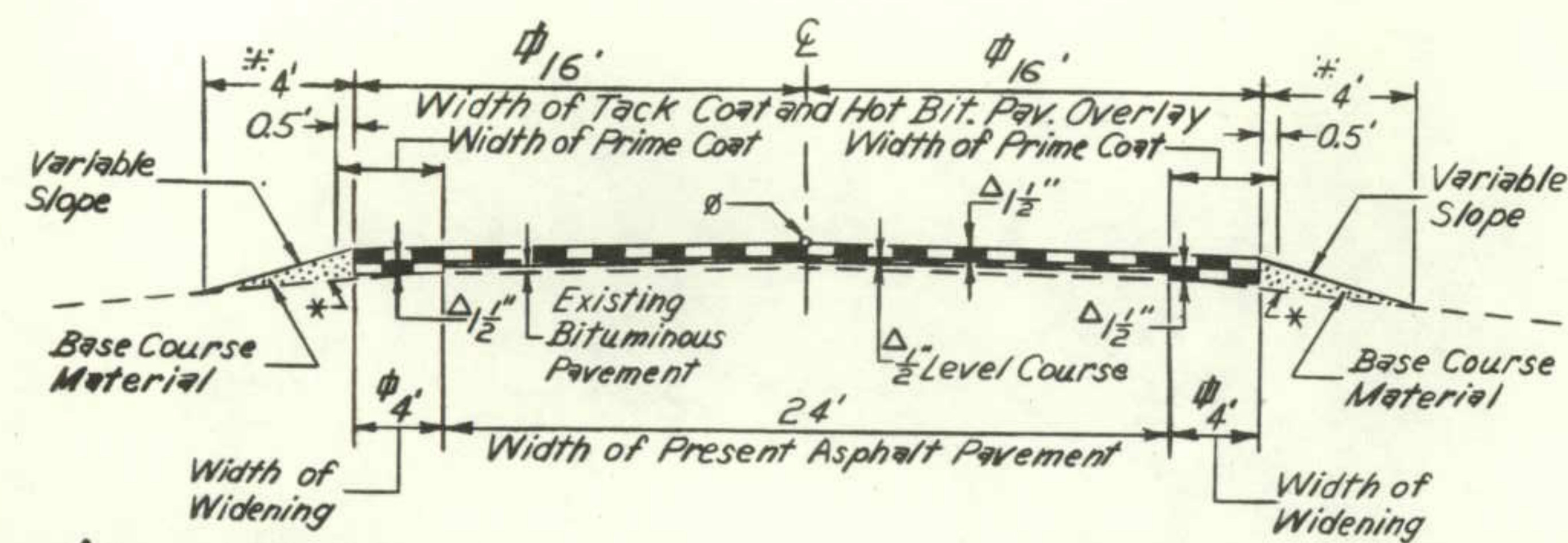
R.L.M.

AS CONSTRUCTED		
NO REVISIONS	REVISED 5-12-77	VOID

FEDERAL ROAD REGION NO.	DIVISION	PROJ. NO.	SHEET NO.	TOTAL SHEETS
VIII	COLORADO	ER-ERFD 108(A)	2	

- R-1 Rev. Typical Sections and General Notes 1-4-77 R.L.M.
- R-2 Rev. Typical Sections, added Note and Tab. of Typical Section 1-27-77 R.L.M.
- R-1 GENERAL NOTES

R-1 R-2
TYPICAL SECTION 1

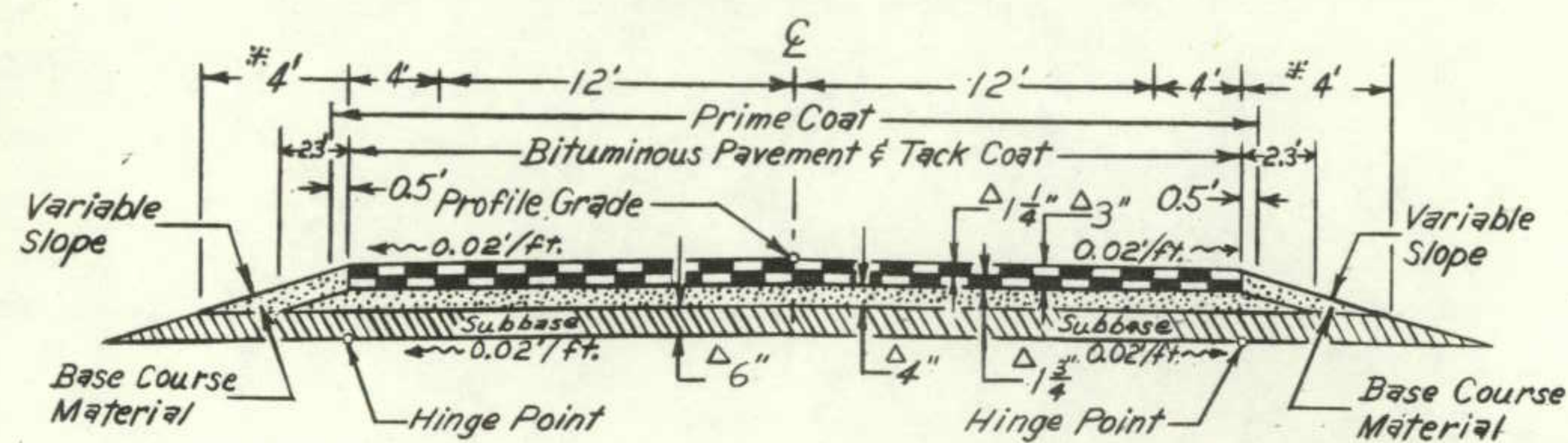


- Δ Approximate Thickness
- * Shoulder Shaping.
- R-2 φ Width varies (See Tabulation)
- φ Profile Grade is existing grade plus 2"
- * As Applicable

- R-2 Material shall be placed in separate courses at the following approximate rates per 100 lin. ft. of roadway:
- | | | |
|---------------------|--------------------------|---------|
| Bituminous Pavement | Top Layer | 30 Tons |
| | Bottom Layer (Shoulders) | 8 Tons |
| | Leveling Course | 8 Tons |
| | Base Course | 7 Tons |

THE RATES SHOWN HAVE BEEN DETERMINED FROM INFORMATION AVAILABLE AT THE TIME OF DESIGN. RATES SHOULD BE ADJUSTED DURING CONSTRUCTION TO OBTAIN THE REQUIRED APPROXIMATE THICKNESS.

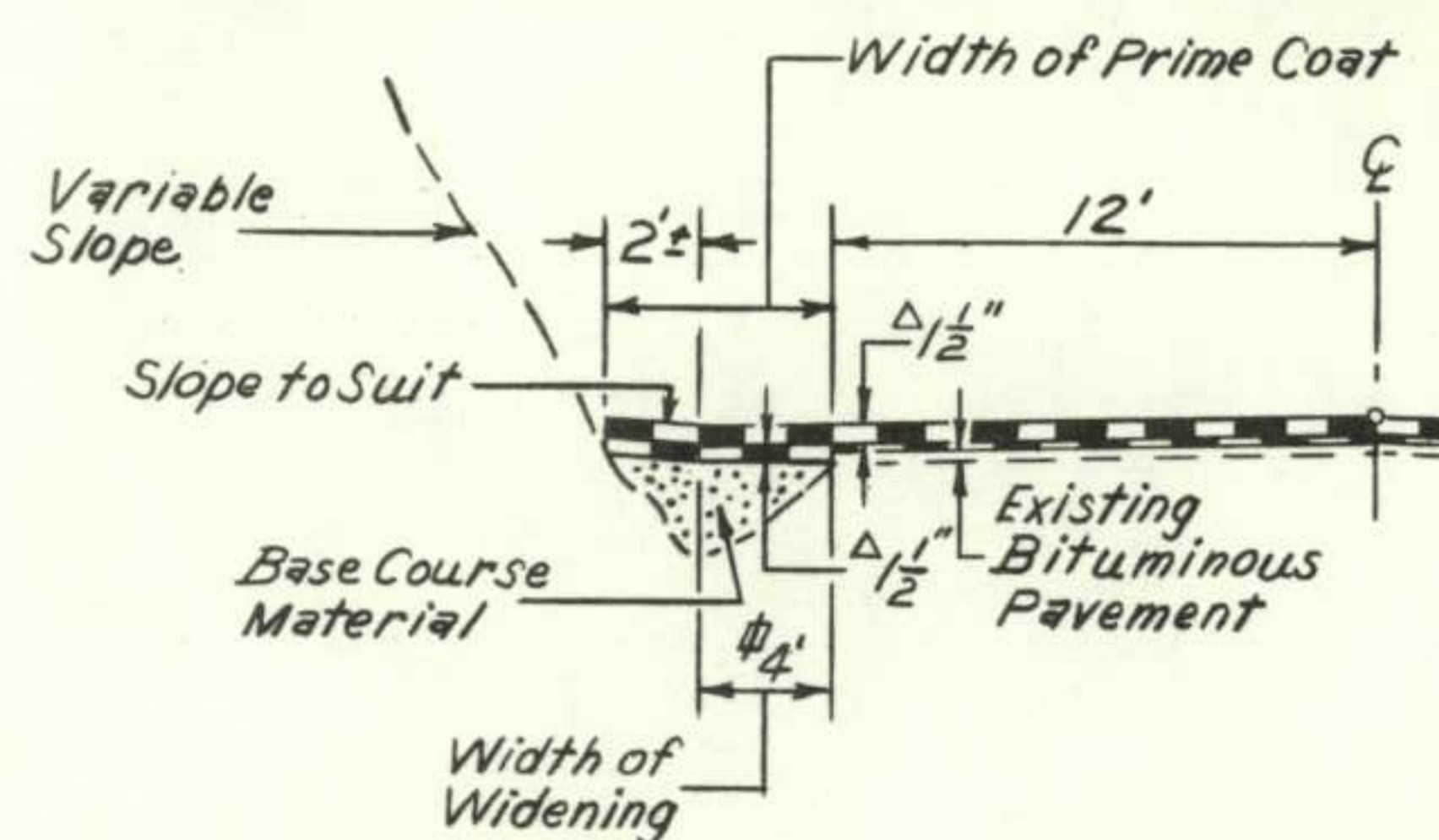
R-1 R-2
TYPICAL SECTION 3



- Material shall be placed in separate courses at the following approximate rates per 100 lin. ft. of roadway:
- | | | |
|-------------------------|--------------|---------|
| Bituminous Pavement | Top Layer | 25 Tons |
| | Bottom Layer | 35 Tons |
| Base Course (Shoulders) | | 7 Tons |
| Base Course | | 77 Tons |

THE RATES SHOWN HAVE BEEN DETERMINED FROM INFORMATION AVAILABLE AT THE TIME OF DESIGN. RATES SHOULD BE ADJUSTED DURING CONSTRUCTION TO OBTAIN THE REQUIRED APPROXIMATE THICKNESS.

R-1 R-2
TYPICAL SECTION IN CUTS AS DIRECTED 2



- R-2 Rates based on 32' width of roadway and will be adjusted to meet actual widths during construction.

R-2
TABULATION OF TYPICAL SECTION

Sta. to Sta.	Width	Typical Section
32+00 - 16+00	30	1
16+00 - 0+00	32	1
0+00 - 20+00	32	1
20+00 - 68+00	30	1
68+00 - 87+00	32	3
87+00 - 131+00	30	1

FOR PRELIMINARY PLAN QUANTITIES OF BITUMINOUS MATERIALS, THE FOLLOWING RATES OF APPLICATION WERE USED:

PRIME COAT (MC-70)	0.30 GALS. PER SQ. YD.
TACK COAT DILUTED EMUL. ASPH. (CSS-1)	0.10 GALS. PER SQ. YD.
BITUMINOUS PAVEMENT	110 LBS. PER SQ. YD./INCH THICK

DILUTED EMULSIFIED ASPHALT FOR TACK COAT SHALL CONSIST OF 1 PART EMULSIFIED ASPHALT AND 1 PART WATER.

RATES OF APPLICATION SHALL BE AS DETERMINED BY THE ENGINEER AT THE TIME OF APPLICATION.

THE FOLLOWING SHALL BE FURNISHED WITH EACH BITUMINOUS PAYER.

1. A SKI TYPE DEVICE AT LEAST 30 FEET IN LENGTH.
2. SHORT SKI OR SHOE

ANY LAYER OF BITUMINOUS PAVEMENT THAT IS TO HAVE A SUCCEEDING LAYER PLACED THEREON SHALL BE COMPLETED FULL WIDTH BEFORE SUCCEEDING LAYER IS PLACED.

COMPACTION SHALL BE AASHTO T 180

IT IS ESTIMATED THAT 216 HOURS OF BLADING WILL BE REQUIRED FOR SHAPING PRIOR TO PLACEMENT OF AGGREGATE BASE COURSE FOR SHOULDER WIDENING AND AREAS WHERE ADDITIONAL AGGREGATE BASE COURSE IS NOT REQUIRED.

IT IS ESTIMATED THAT 2674.5 HOURS OF FLAGGING FOR CONTROLLING TRAFFIC WILL BE REQUIRED FOR THIS PROJECT.

GUARD POSTS AND DELINEATORS WILL BE REMOVED BY STATE FORCES.

IT IS ESTIMATED THAT ROCK EXCAVATION (HAUL) WILL BE REQUIRED AT THE FOLLOWING LOCATIONS:

LOCATION	ESTIMATED QUANTITY CU. YDS. FINAL	REMARKS	R.L.#
2+50 RT.	500 327	REMOVAL OF SOLID AND LARGE LOOSE ROCK TO PREVENT ROCK SLIDE	3
28+05	* 188		
28+50 RT. 42	* 400 731	REMOVAL OF BOULDER AND LOOSE ROCK TO PREVENT ROCK SLIDE	
TOTAL	900 1246		3+33

*Ref: summary sheet for x-sec #50

IT IS ESTIMATED THAT UNCLASSIFIED EXCAVATION (HAUL) WILL BE REQUIRED AT THE FOLLOWING LOCATIONS:

LOCATION	ESTIMATED QUANTITY CU. YDS. FINAL	REMARKS	R.L.#
3+50 to 6+14			266 #
0+50	3,500 2347	CHANNEL IMPROVEMENT	
1+06+11+90 47+50	1,500 1273	CHANNEL IMPROVEMENT	
TOTAL	5,000 *3620		33459

Ref: x-sec sheet # 50

R-1 Rev. Quantities 1-4-77 R.L.M.

SUMMARY OF APPROXIMATE QUANTITIES

AS CONSTRUCTED
NO REVISIONS REVISED 5-12-77 VOID

FEDERAL ROAD REGION NO.	DIVISION	PROJ. NO.	SHEET NO.	TOTAL SHEETS
VIII	COLORADO	ER-ERFD 108(A)	3	

INDEX BOOK PAGE SHEET	CONTRACT ITEM NO.	CONTRACT ITEM	UNIT	W. O. No.	Change	266 No.'s															PROJECT TOTALS			
																					PROJECT TOTALS	FINAL TOTALS	OVER RUN	UNDER RUN
	647 202	Removal of Structure	Each																		10	13	3	-
	6 202	Removal of Concrete Box Culvert	Each			11															1	1	-	-
	6 202	Removal of Mat from Bridge	Sq. Yd.			41, 43															682	682	-	-
	647 202	Plug Culvert	Each			24, 30, 39															1	8	7	-
R-1	250 203	Unclassified Excavation (Haul)	Cu. Yd.			33, 59															5,000	3,620	-	1,380
R-1	250 203	Embankment Material (Complete in Place)	Cu. Yd.			33, 38, 46, 59															4,000	5,924	1,924	-
R-1	250 203	Rock Excavation (Haul)	Cu. Yd.			3, 33															900	1,246	346	-
	(DOH# 7) 203	Blading	Hour			-															200	216	16	-
	50 206	Structure Excavation	Cu. Yd.			12, 33, 59															8,110	8,490	380	-
	7 210	Relay Pipe (36 Inch)	Lin. Ft.			22															62	60	-	2
R-1	DOH 87 304	Aggregate Base Course (Class 6) (Haul)	Ton			-															6,100	9,691.60	3,591.60	-
R-1	DOH 87 403	Hot Bituminous Pavement (Grading EX) (Haul and Asphalt)	Ton			-															8,000	8,275.70	275.70	-
3	38 411	Emulsified Asphalt (CS5-1)	Gal.			52															5,000	1,500	-	3,500
3	36,37 411	Liquid Asphaltic Material (MC-70)	Gal.			41, 44, 45															4,900	5,334	434	-
R-1	647 506	Riprap	Cu. Yd.			-															1,070	1,200	130	-
R-1	647 506	Heavy Riprap	Cu. Yd.			-															10,010	10,328	318	-
	647 601	Concrete Class A (Miscellaneous)	Cu. Yd.			-															31	43.11	12.11	-
R-1	647 601	Concrete Class A (Box Culvert)	Cu. Yd.			-															159	161.09	2.09	-
R-1	647 602	Reinforcing Steel	Lb.			-															15,400	15,366	-	34
	647 603	18 Inch Corrugated Steel Pipe Special	Lin. Ft.			30, 31															132	114	-	18
	647 603	24 Inch Corrugated Steel Pipe Special	Lin. Ft.			-															678	837	159	-
	7 603	36 Inch Corrugated Steel Pipe Special	Lin. Ft.			22															60	60	-	-
	6 603	42 Inch Corrugated Steel Pipe Special	Lin. Ft.			20															56	56	-	-
	6 603	36 Inch Equivalent Corrugated Steel Pipe Arch Special	Lin. Ft.			17, 12															50	76	26	-
	6 603	48 Inch Equivalent Corrugated Steel Pipe Arch Special	Lin. Ft.			11															64	64	-	-
	6 603	24 Inch Steel End Section	Each			10, 25															3	3	-	-
	7 603	36 Inch Steel End Section	Each			22															2	2	-	-
	6 603	36 Inch Equivalent Arch Steel End Section	Each			12															1	1	-	-
	6 603	48 Inch Equivalent Arch Steel End Section	Each			11															2	2	-	-

SUMMARY OF APPROXIMATE QUANTITIES

R-1 Add Items 1/4/77 R.L.M.

AS CONSTRUCTED

NO REVISION REVISED 5-12-77 VOID

FEDERAL ROAD DISTRICT NO.	DIVISION	PROJ. NO.	SHEET NO.	TOTAL SHEETS
VIII	COLORADO	ER-ERF0108(4)	4	

INDEX			CONTRACT ITEM NO.	CONTRACT ITEM	UNIT	Work Order No.	Change	266 No.'s					PROJECT TOTALS	FINAL Totals	OVER RUN	UNDER RUN		
BOOK	PAGE	SHEET																
		6	604	Inlet Type C (5 Foot)	Each			23						1	1	-	-	
		7	604	Inlet Type D (5 Foot)	Each			31						1	1	-	-	
		6+7	604	Inlet Grating and Frame Type C	Each			-						30	35	5	-	
R-1		6	606	Guard Rail Type 3 (6-3 Post Spacing)	Lin. Ft.			58						200	200	-	-	
R-1		6	606	End Anchorage Type 3A	Each			58						1	1	-	-	
R-1		6	606	End Anchorage Type 3B	Each			58						1	1	-	-	
	1	23	607	Bituminous Sidewalk	Ton			55, 56						10	10.9	0.9	-	
		6	609	Curb Type 6 (Section M)	Lin. Ft.			54						570	672	102	-	
		5	612	Delineator Type I	Each			58						348	305	-	43	
		5	612	Delineator Type III	Each			58						4	4	-	-	
		DOH # 7	614	Flagging	Hour			-						1,000	2674.5 2764	1674.5	-	
			620	Field Laboratory	Each			2						1	1	-	-	
			620	Sanitary Facility	Each			2						1	1	-	-	
			626	Mobilization	Lump Sum			33, 45						1	1	-	-	
				<u>FORCE ACCOUNT</u>														
			F/A01	Cleaning Culverts	Lump Sum			56						\$2,500.00	\$2,505.10	\$5.10	-	
			F/A02	Minor Contract Revisions	Lump Sum	0964	\$10,000.00	Est. 1,243						\$10,000.00	\$10,688.24	\$688.24	-	
				<u>STATE FORCES - FEDERAL AID</u>														
			F/A03	Signing and Striping	Lump Sum			59						\$600.00	\$1,645.82	\$1,045.82	-	
			F/A04	Asphalt Rejuvenating Agent	Lump Sum			-						\$2,600.00	-0-	\$2,600.00	-	

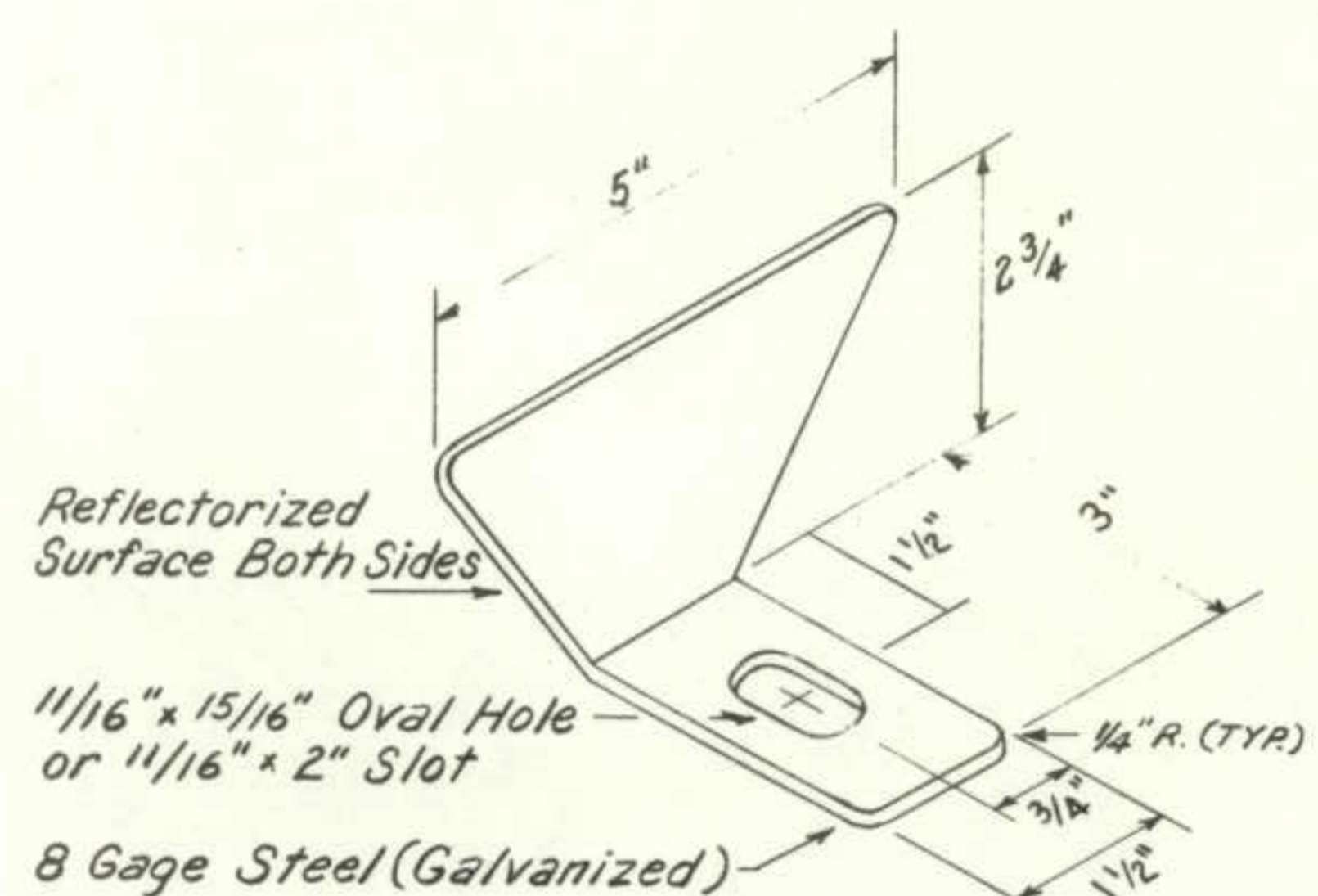
AS CONSTRUCTED		FEDERAL ROAD REGION NO.	DIVISION	PROJ. NO.	SHEET NO.	TOTAL SHEETS
NO REVISION	REVISED 5-12-77	VIII	COLORADO	ER-ERFD 10814	5	

R-1 Rev. Surfacing Plan & Added Detail of Guard Rail Reflector-Tab 1-4-77 R.L.M.
 R-2 Rev. Dimension 1-27-77 R.L.M.

DELINEATORS

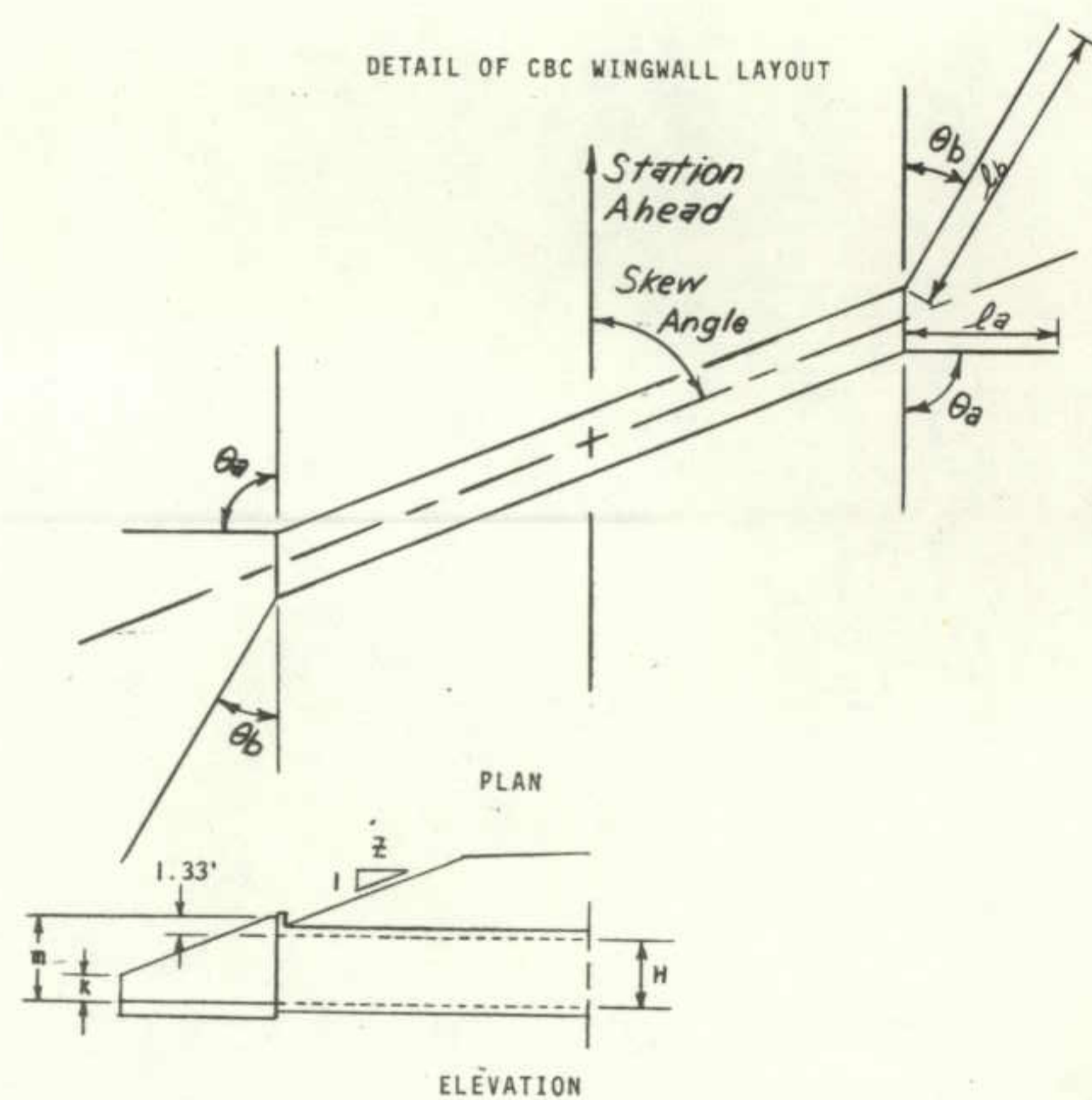
STATION TO STATION	SIDE	SPACING	TYPE	
			I	II
31+73.2 - 22+19.7	LT. & RT.	16'00"	24	
21+25.3 - 19+15.3	LT. & RT.	16'00"	6	
18+57.5	LT. & RT.	--	2	
17+99.8 - 5+75.4	LT. & RT.	8'00"	26	
5+22.0 - 0+98	LT. & RT.	7'30"	70	
0+12	RT.	BRIDGE		1
0+12	LT.	--	1	
0+00 BEGIN F&P 9-7-R BEGIN F&P 9-8-R				
0+90.2	LT.	BRIDGE		1
0+90.2	RT.	--	1	
1+27.7 - 8+17.4 BK	LT. & RT.	16'00"	18	
9+56.3	LT. & RT.	--	2	
11+08.1 - 15+39.8	LT. & RT.	6'00"	10	
16+60	LT. & RT.	--	2	
17+80.1 - 23+11.9	LT. & RT.	20'00"	20	
23+61.8 - 30+53.4	LT. & RT.	16'00"	20	
31+73.9	LT. & RT.	--	2	
32+94.4 - 39+68.6	LT. & RT.	6'00"	12	
41+10.4	LT. & RT.	--	2	
42+56.6 - 46+88.7	LT. & RT.	14'00"	12	
47+05	RT.	BRIDGE		1
47+05	LT.	--	1	
48+07.2	RT.	--	1	
48+07.2	LT.	BRIDGE		1
49+69.5 - 55+20.9	LT. & RT.	9'00"	12	
56+03.4	LT. & RT.	--	2	
56+85.9 - 60+13.9	LT. & RT.	12'00"	10	
61+39.7 - 64+03.7 BK	LT. & RT.	5'07"08"	6	
65+15.6 - 68+43.6	LT. & RT.	12'00"	10	
69+37.2 - 70+57.2	LT. & RT.	6'00"	4	
71+89.7	LT. & RT.	--	2	
73+22.0	LT. & RT.	--	2	
74+69.0 AH - 83+06.2	LT. & RT.	11'00"	18	
84+25.5	LT. & RT.	--	2	
85+44.7 - 95+32.2	LT. & RT.	20'00"	28	
96+75.3 - 100+45.3	LT. & RT.	14'00"	12	
101+15.3 - 105+59.3	LT. & RT.	14'00"	14	
106+93.7 - 113+69.7 BK	LT. & RT.	14'00"	22	
114+82.9 - 119+26.9	LT. & RT.	14'00"	14	
120+38.9 - 125+40.9	LT. & RT.	8'00"	8	
125+82.9 - 130+84.8	LT. & RT.	6'00"	10	
TOTAL			348	4
FINAL TOTAL			305	4

DETAIL OF GUARD RAIL REFLECTOR-TAB



A Reflector Tab shall be placed on each post or as directed. Installation detail similar to that shown on Standard M-606-B

DETAIL OF CBC WINGWALL LAYOUT



STATION	SIZE	TYPE	SKEW	theta_a	theta_b	l_a	l_b	l	Z	H	K
71+	DOUBLE 8'x5'x48'	8-8-A	90°	60°	60°	11.0'	11.0'	6.33'	2	5'	1.5'
109+50	7'x4'x54'	7A	60°Rt.	90°	30°	8.0'	16.0'	5.33'	2	4'	1.5'

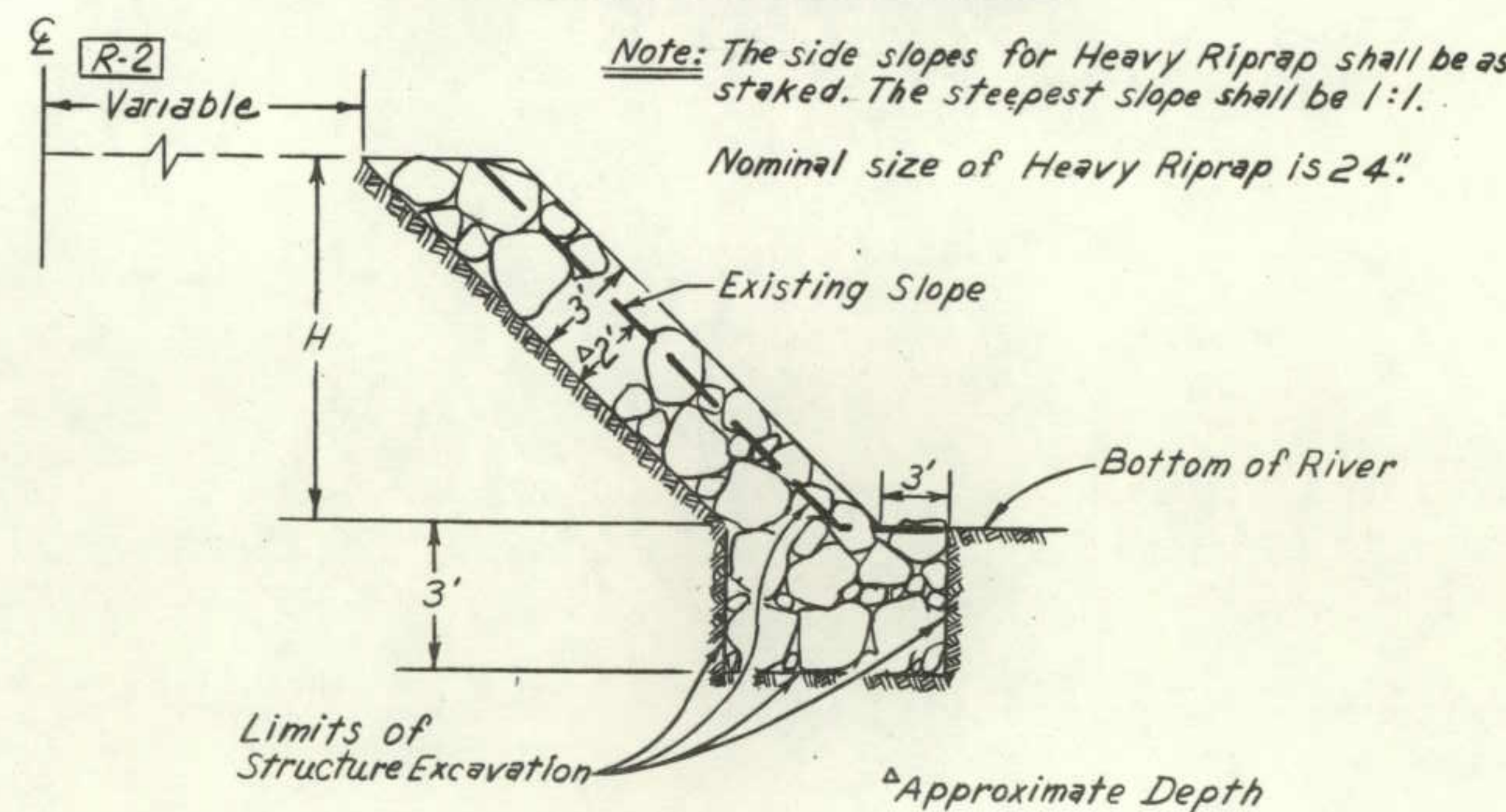
Note: Headwalls shall be parallel to the centerline of the highway.

R-1 SURFACING PLAN

STATION TO STATION	QUANTITY - TONS					
	SIDE SLOPE	BASE COURSE	SURFACE COURSE - HOT BITUMINOUS PAVEMENT			TOP LAYER GRADING EX (OVERLAY)
			AGGREGATE BASE COURSE CLASS 6	BOTTOM LAYER (SHOULDER) GRADING EX	LEVELING COURSE GRADING EX	
32+00 TO 0+12.0		223	--	255	255	956
0+12.0 TO 0+00.0 BRIDGE		--	--	--	--	* 4
0+00.0 TO 0+90.2 BRIDGE		--	--	--	--	* 34
0+90.2 TO 8+17.4 BK.		51	--	58	58	218
8+04.4 AH TO 39+68.6 BK		221	--	253	253	949
39+64.1 AH TO 47+05.0		52	--	59	59	222
47+05.0 TO 48+07.2 BRIDGE		--	--	--	--	* 38
48+07.2 TO 64+03.7 BK		112	--	128	128	479
64+04.4 AH TO 68+00.0		28	--	32	32	119
68+00.0 TO 74+54.8 BK		46	504	--	--	229
74+69.0 AH TO 88+00.0		93	1,025	--	--	466
88+00.0 TO 100+93.2 BK		91	--	103	103	388
100+83.6 AH TO 113+69.7 BK		90	--	103	103	386
113+68.4 AH TO 131+00		121	--	139	139	519
ESTIMATED FOR APPROACHES TO PROJECT		18	--	12	16	56
PAVING TO ROCK		--	--	--	--	50
IRREGULARITIES IN SUBGRADE		115	294	--	--	50
TOTAL		1,261	4,762	1,142	1,146	745
						4,915

*SUBBASE TO BE ABC CLASS 6 (6 INCHES THICK). See summary sheet #3 & DOH FORM 87
 * 2 INCH THICKNESS

DETAIL OF HEAVY RIPRAP



Note: The side slopes for Heavy Riprap shall be as staked. The steepest slope shall be 1:1.
 Nominal size of Heavy Riprap is 24".

Δ INLET QUANTITIES

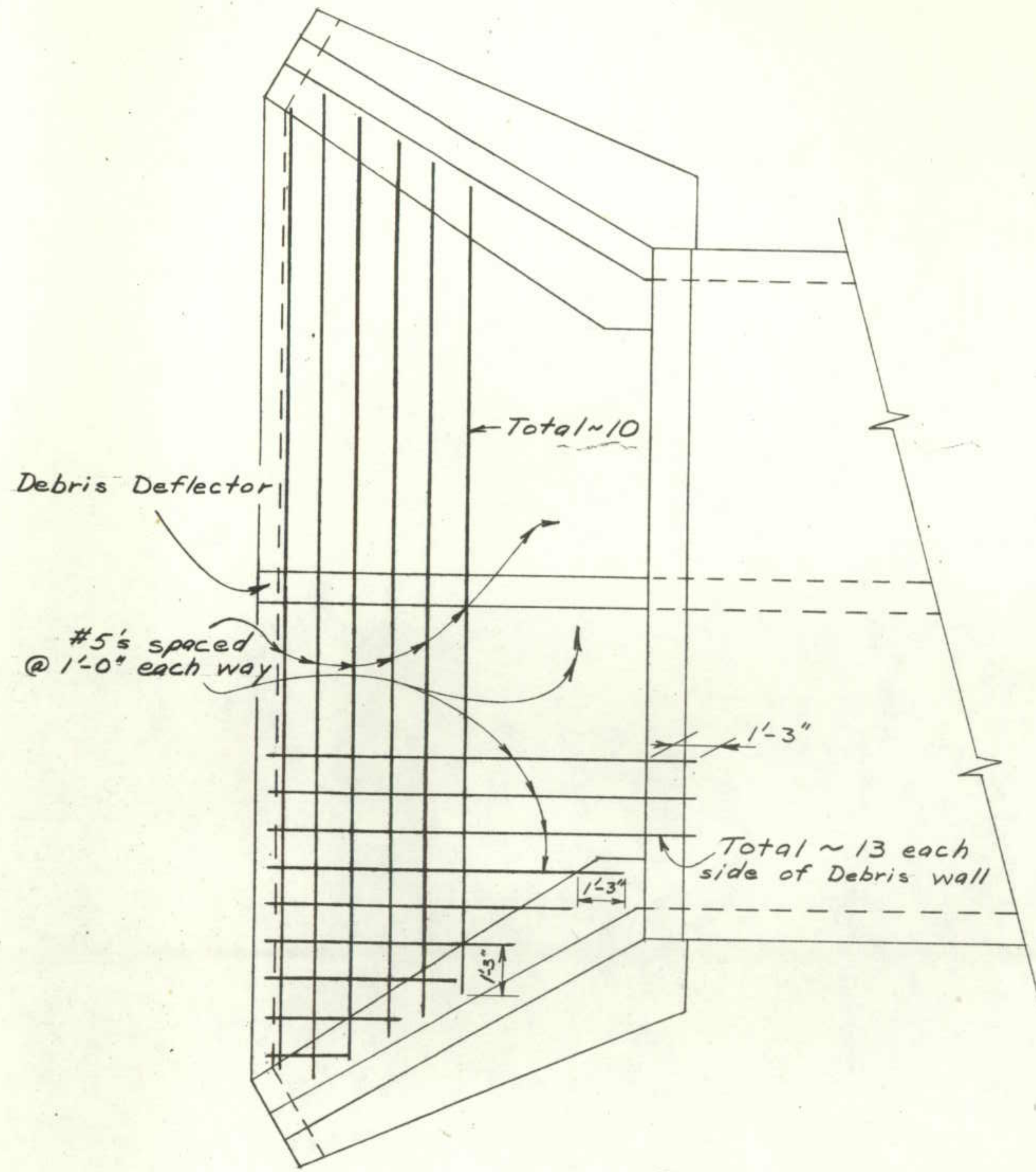
Item No.	Description	Unit	Apron & Toe*	Debris Deflector*	TOTAL
601	Concrete Class A (Box Culvert)	Cu. Yd.	7.8	1.2	9.0
602	Reinforcing Steel	Lbs.	588	227	815

AS CONSTRUCTED
REVISED DATE
AS CONSTRUCTED
NO REVISIONS DATE 5-12-77

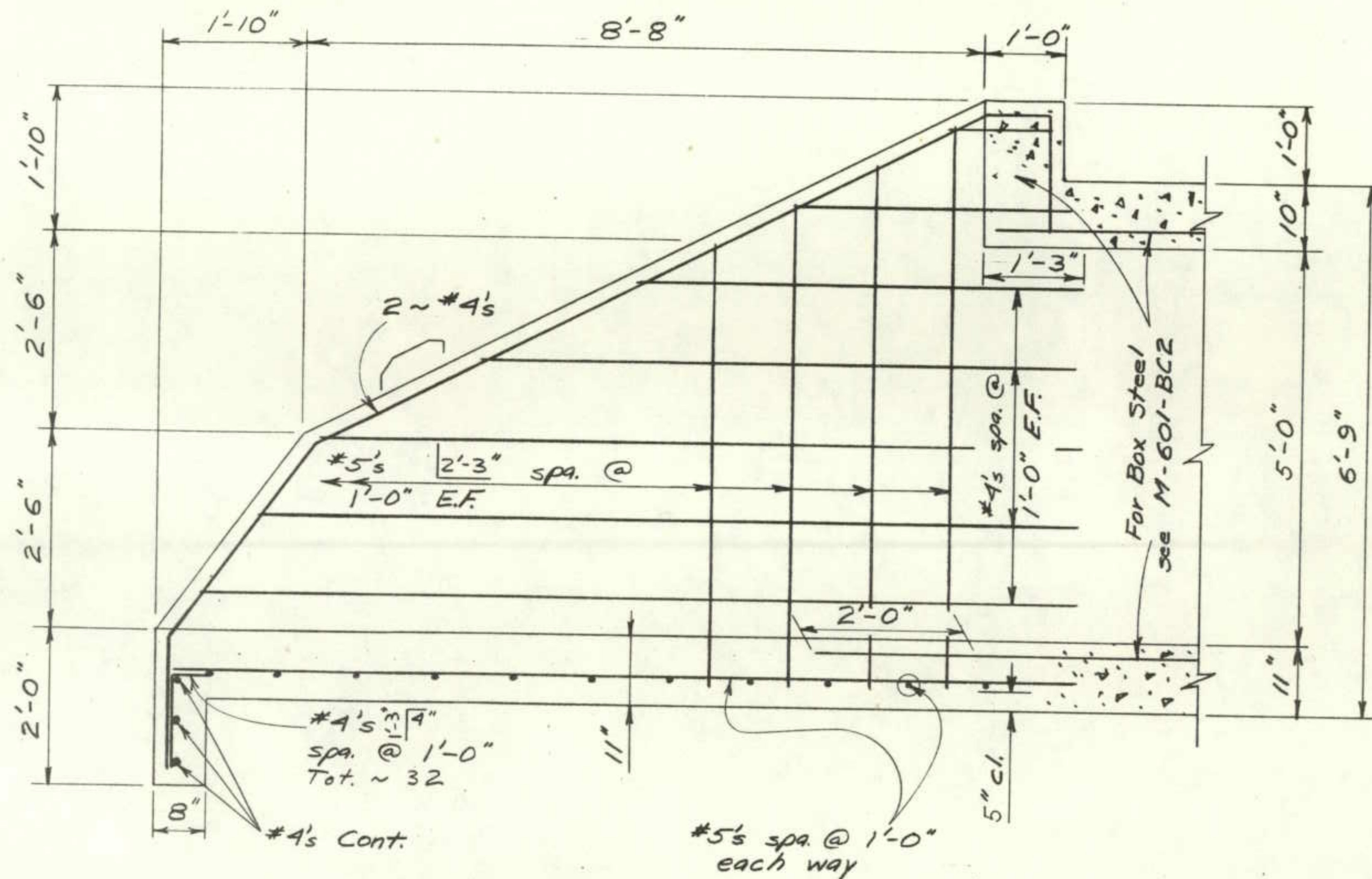
FEDERAL ROAD REGION NO.	DIVISION	PROJ. NO.	SHEET NO.	TOTAL SHEETS
VIII	COLORADO	ER-ERFO 10B(4)	7A	

REVISIONS		
1-4-77	New Sheet	R.L.M.

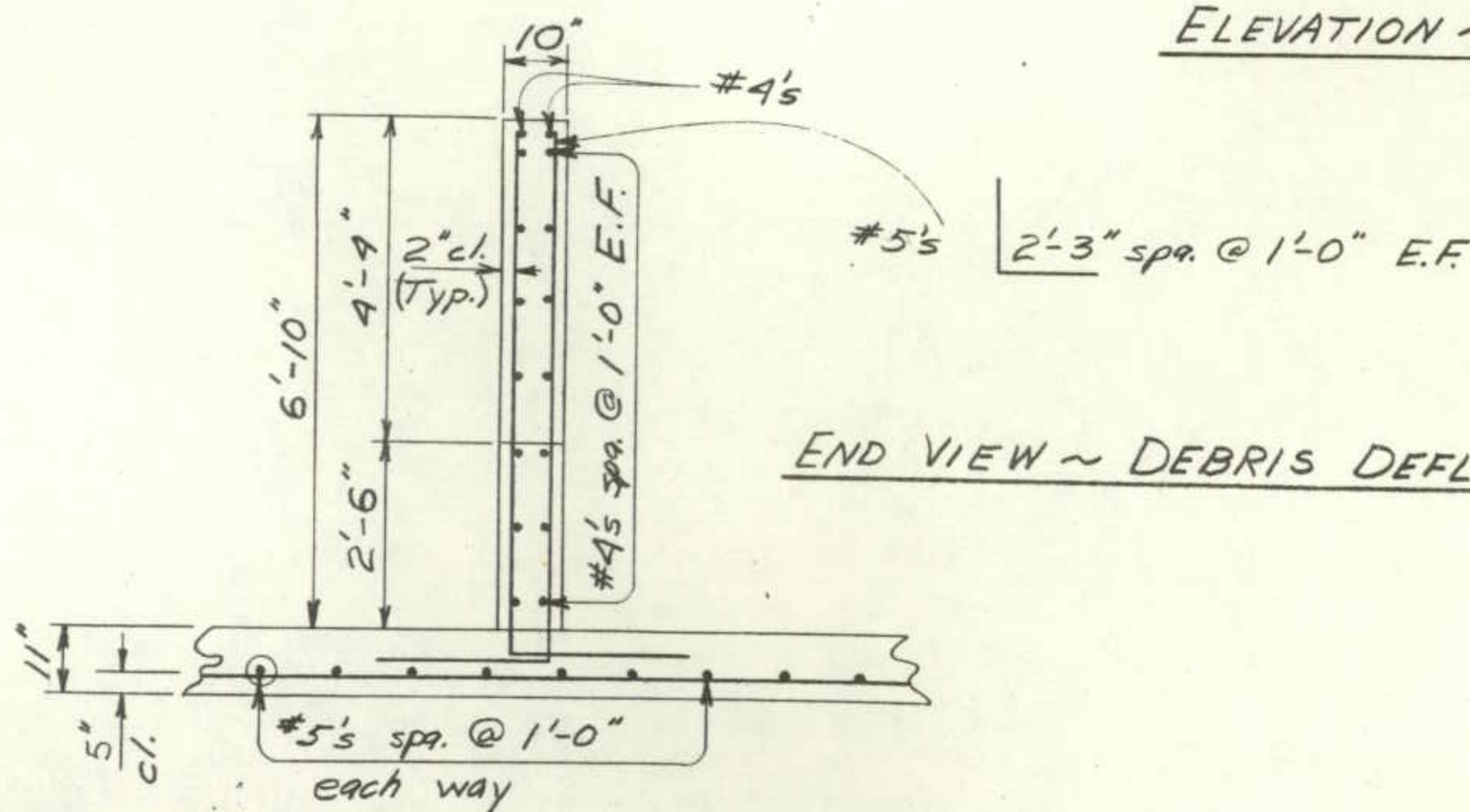
* Quantities to include toe wall, apron inside wingwall footer, and debris deflecting wall.
Δ These Quantities are included with Quantities at sta. 71+ on Structure Quantities sheet.



PLAN ~ INLET



ELEVATION ~ INLET & DEBRIS DEFLECTOR



END VIEW ~ DEBRIS DEFLECTOR

DESIGNED BY	CHECKED BY	DATE	QUANTITIES BY

DIVISION OF HIGHWAYS

INLET ~
DEBRIS DEFLECTING
WEB WINGWALL FOR
DOUBLE 8' x 5' C.B.C.
@ Station 71+

Designer	J. GRAVINA	Structure	
Detailer	W.R. HESSLER	Numbers	
Drawing Number	B	of	Drawings

Revision Dates (Preliminary Stage Only)

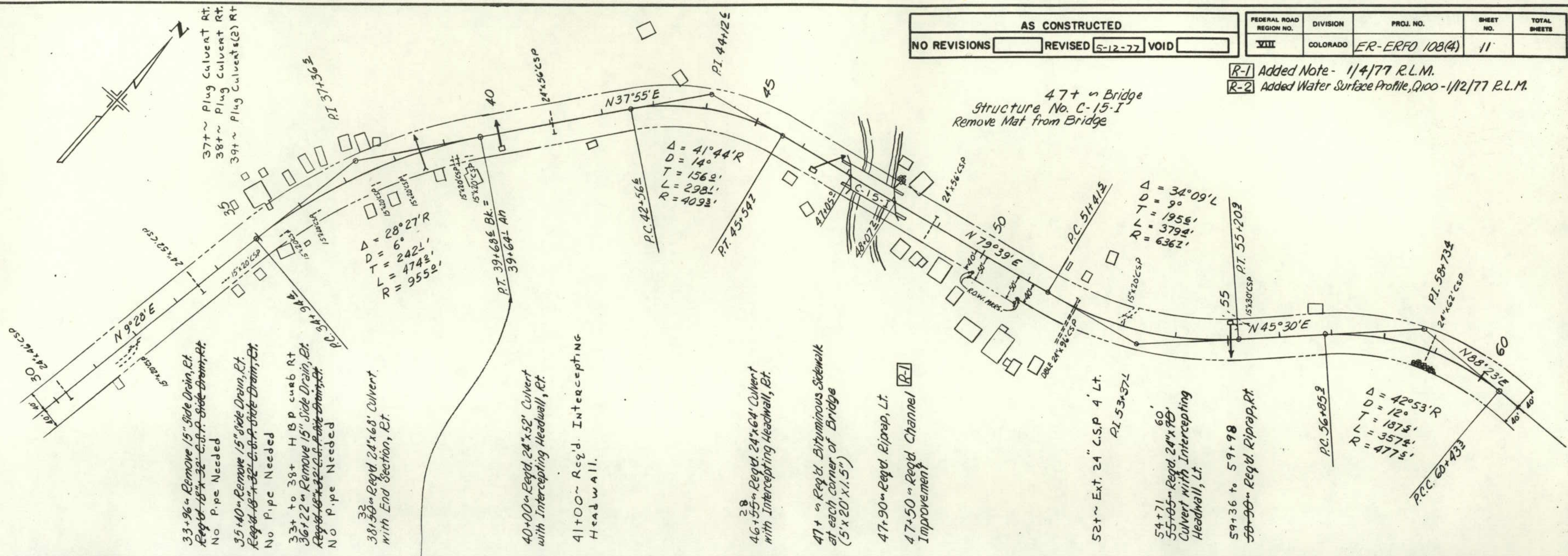
DATE	
BY	
REVISION	
PLOTTED	
ALIGNED CHECKED	
NOTE BOOK	
NO.	

DATE	
BY	
REVISION	
PLOTTED	
ALIGNED CHECKED	
NOTE BOOK	
NO.	

AS CONSTRUCTED		
NO REVISIONS	REVISED	VOID
	5-12-77	

FEDERAL ROAD REGION NO.	DIVISION	PROJ. NO.	SHEET NO.	TOTAL SHEETS
VIII	COLORADO	ER-ERFO 108(4)	11	

R-1 Added Note - 1/4/77 R.L.M.
R-2 Added Water Surface Profile, Q100 - 1/12/77 R.L.M.



33+36 ~ Remove 15" Side Drain, Rt.
Repl. 18" x 32" C.S.P. Side Drain, Rt.
No P. pipe Needed

35+40 ~ Remove 15" Side Drain, Rt.
Repl. 18" x 32" C.S.P. Side Drain, Rt.
No P. pipe Needed

33+ to 38+ H.B.P. curb Rt.
36+22 ~ Remove 15" Side Drain, Rt.
Repl. 18" x 32" C.S.P. Side Drain, Rt.
No P. pipe Needed

38+36 ~ Reqd. 24"x68" Culvert
With End Section, Rt.

40+00 ~ Reqd. 24"x52" Culvert
with Intercepting Headwall, Rt.

41+00 ~ Reqd. Intercepting
Headwall.

46+55 ~ Reqd. 24"x64" Culvert
with Intercepting Headwall, Rt.

47+ ~ Reqd. Bituminous Sidewalk
at each corner of Bridge
(5' x 20' x 1.5")

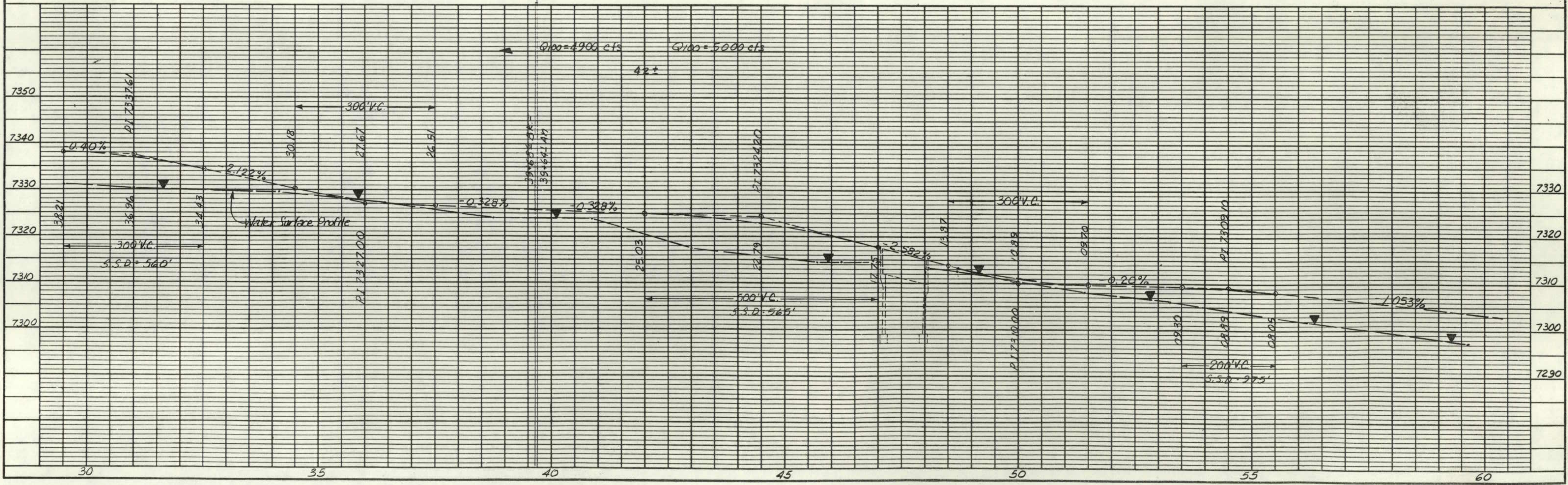
47+90 ~ Reqd. Riprap, Lt.

47+50 ~ Reqd. Channel
Improvement

52+ ~ Ext. 24" C.S.P. 4 Lt.
PI 53+37.1

54+71
55+05 ~ Reqd. 24"x78"
Culvert with Intercepting
Headwall, Lt.

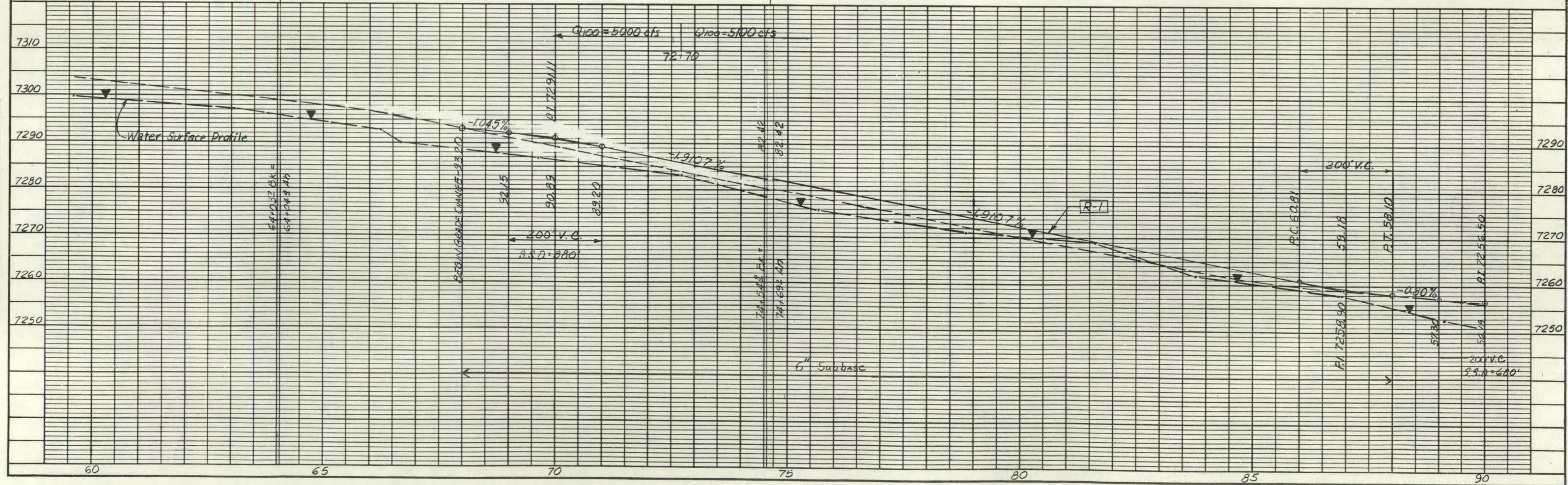
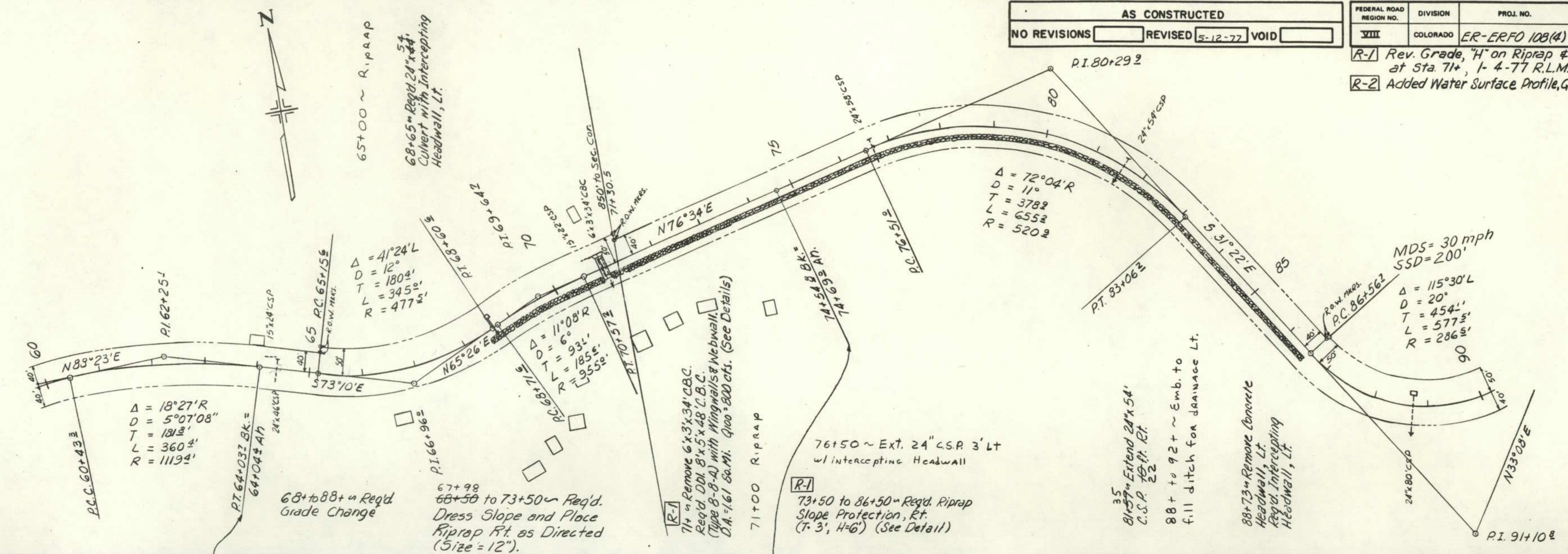
59+36 to 59+98
59+90 ~ Reqd. Riprap, Rt.



AS CONSTRUCTED		
NO REVISIONS	REVISED 5-12-77	VOID

FEDERAL ROAD REGION NO.	DIVISION	PROJ. NO.	SHEET NO.	TOTAL SHEETS
VIII	COLORADO	ER-ERFO 108(4)	12	

R-1 Rev. Grade, "H" on Riprap & Note at Sta. 71+, 1-4-77 R.L.M.
R-2 Added Water Surface Profile, Q100-1/12/77 R.L.M.



DATE	
BY	
REVISION	
NO. 1	
NO. 2	
NO. 3	
NO. 4	
NO. 5	
NO. 6	
NO. 7	
NO. 8	
NO. 9	
NO. 10	

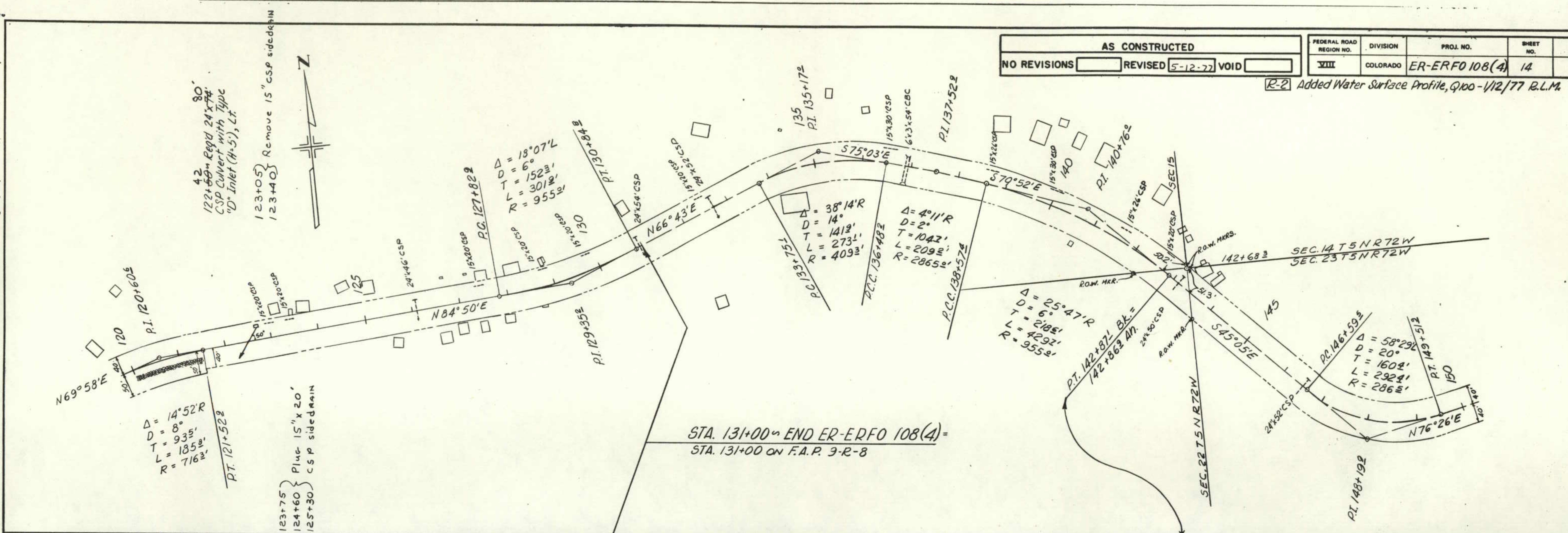
DATE	
BY	
REVISION	
NO. 1	
NO. 2	
NO. 3	
NO. 4	
NO. 5	
NO. 6	
NO. 7	
NO. 8	
NO. 9	
NO. 10	

DATE	
BY	
REVISION	
NO. 1	
NO. 2	
NO. 3	
NO. 4	
NO. 5	
NO. 6	
NO. 7	
NO. 8	
NO. 9	
NO. 10	
NO. 11	
NO. 12	
NO. 13	
NO. 14	
NO. 15	
NO. 16	
NO. 17	
NO. 18	
NO. 19	
NO. 20	
NO. 21	
NO. 22	
NO. 23	
NO. 24	
NO. 25	
NO. 26	
NO. 27	
NO. 28	
NO. 29	
NO. 30	
NO. 31	
NO. 32	
NO. 33	
NO. 34	
NO. 35	
NO. 36	
NO. 37	
NO. 38	
NO. 39	
NO. 40	
NO. 41	
NO. 42	
NO. 43	
NO. 44	
NO. 45	
NO. 46	
NO. 47	
NO. 48	
NO. 49	
NO. 50	
NO. 51	
NO. 52	
NO. 53	
NO. 54	
NO. 55	
NO. 56	
NO. 57	
NO. 58	
NO. 59	
NO. 60	
NO. 61	
NO. 62	
NO. 63	
NO. 64	
NO. 65	
NO. 66	
NO. 67	
NO. 68	
NO. 69	
NO. 70	
NO. 71	
NO. 72	
NO. 73	
NO. 74	
NO. 75	
NO. 76	
NO. 77	
NO. 78	
NO. 79	
NO. 80	
NO. 81	
NO. 82	
NO. 83	
NO. 84	
NO. 85	
NO. 86	
NO. 87	
NO. 88	
NO. 89	
NO. 90	
NO. 91	
NO. 92	
NO. 93	
NO. 94	
NO. 95	
NO. 96	
NO. 97	
NO. 98	
NO. 99	
NO. 100	

DATE	
BY	
REVISION	
NO. 1	
NO. 2	
NO. 3	
NO. 4	
NO. 5	
NO. 6	
NO. 7	
NO. 8	
NO. 9	
NO. 10	
NO. 11	
NO. 12	
NO. 13	
NO. 14	
NO. 15	
NO. 16	
NO. 17	
NO. 18	
NO. 19	
NO. 20	
NO. 21	
NO. 22	
NO. 23	
NO. 24	
NO. 25	
NO. 26	
NO. 27	
NO. 28	
NO. 29	
NO. 30	
NO. 31	
NO. 32	
NO. 33	
NO. 34	
NO. 35	
NO. 36	
NO. 37	
NO. 38	
NO. 39	
NO. 40	
NO. 41	
NO. 42	
NO. 43	
NO. 44	
NO. 45	
NO. 46	
NO. 47	
NO. 48	
NO. 49	
NO. 50	
NO. 51	
NO. 52	
NO. 53	
NO. 54	
NO. 55	
NO. 56	
NO. 57	
NO. 58	
NO. 59	
NO. 60	
NO. 61	
NO. 62	
NO. 63	
NO. 64	
NO. 65	
NO. 66	
NO. 67	
NO. 68	
NO. 69	
NO. 70	
NO. 71	
NO. 72	
NO. 73	
NO. 74	
NO. 75	
NO. 76	
NO. 77	
NO. 78	
NO. 79	
NO. 80	
NO. 81	
NO. 82	
NO. 83	
NO. 84	
NO. 85	
NO. 86	
NO. 87	
NO. 88	
NO. 89	
NO. 90	
NO. 91	
NO. 92	
NO. 93	
NO. 94	
NO. 95	
NO. 96	
NO. 97	
NO. 98	
NO. 99	
NO. 100	

AS CONSTRUCTED				
NO REVISIONS	REVISED	VOID		
	5-12-77			
FEDERAL ROAD REGION NO.	DIVISION	PROJ. NO.	SHEET NO.	TOTAL SHEETS
VIII	COLORADO	ER-ERFO 108(4)	14	

R-2 Added Water Surface Profile, Q100 - 1/12/77 B.L.M.



STA. 131+00 = END ER-ERFO 108(4)
 STA. 131+00 ON F.A.P. 3-R-8

