

STATE OF COLORADO  
STATE HIGHWAY COMMISSION

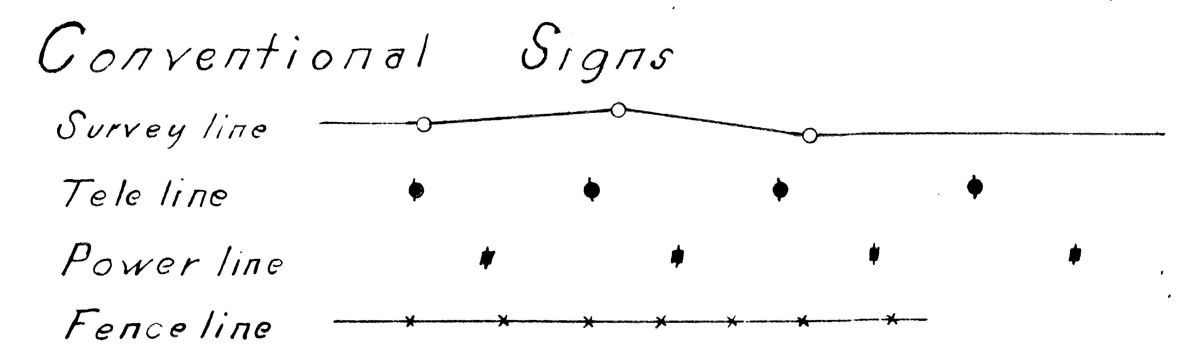
PLAN AND PROFILE OF PROPOSED  
STATE HIGHWAY

FEDERAL AID PROJECT NO 127

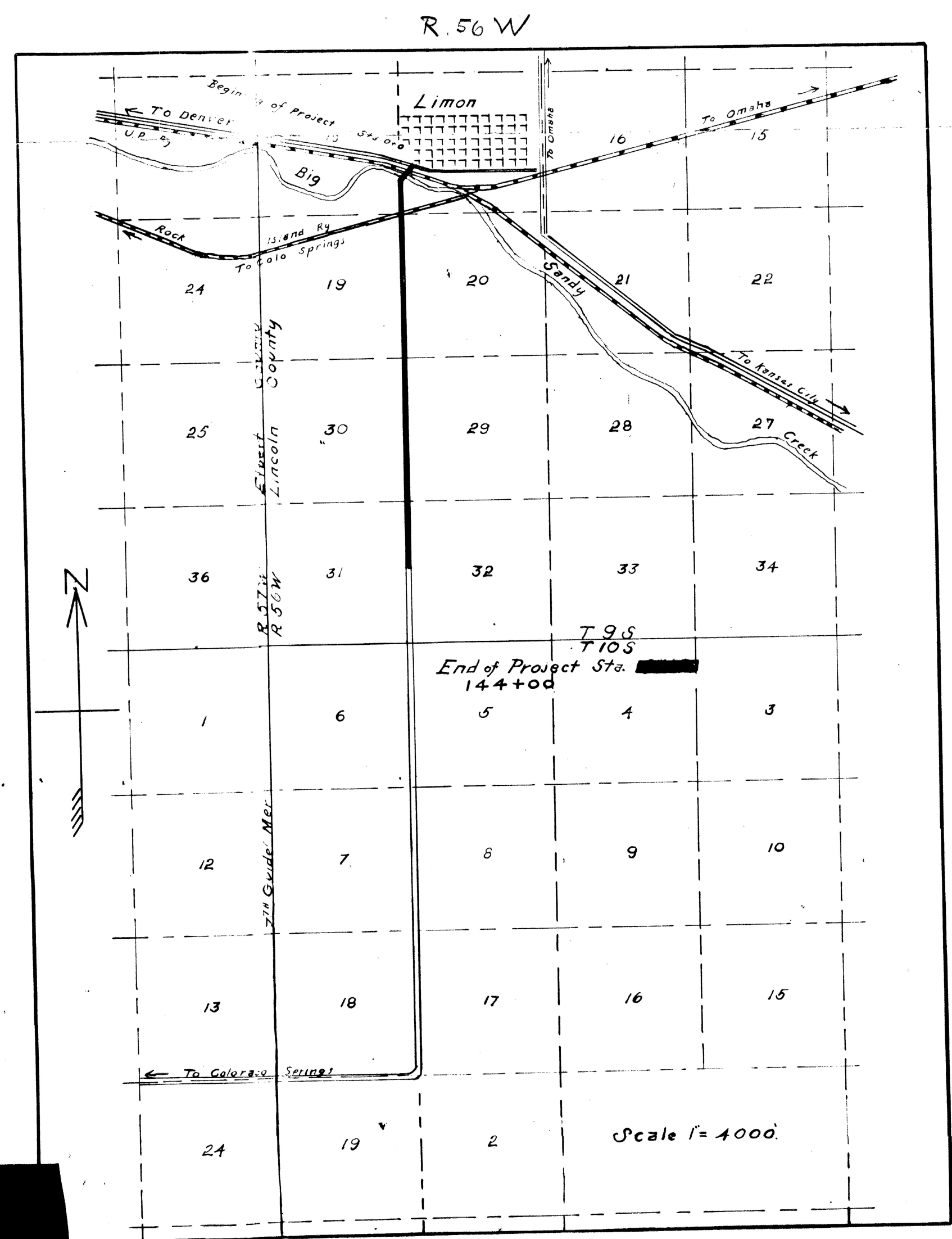
LINCOLN COUNTY

INDEX OF SHEETS

- SHEET NO 1 TITLE PAGE
- " " 2 TYPICAL CROSS-
- " " SECTIONS OF ROAD AND SUMMARY OF QUANTITIES
- " 3 & 7 PLAN & PROFILE
- " 8 & 9 STRUCTURES
- " 10 to 16 CROSS SECTIONS



PLAN-1 IN = 100 FT  
PROFILE-1 IN Hor = 100 FT  
1 IN Vertical = 10 FT  
GRADELINE ON PROFILE SHOWN AS GRADE OF FINISHED ROAD  
GROSS LENGTH OF PROJECT 14400 FT 2.727 Miles  
NET LENGTH OF PROJECT 14400 FT 2.727 Miles



RECOMMENDED FOR APPROVAL

CHIEF ENGINEER, OFFICE OF STATE HIGHWAY COMMISSION  
APPROVED

STATE HIGHWAY COMMISSIONER  
RECOMMENDED FOR APPROVAL

DISTRICT ENGINEER, BUREAU OF PUBLIC ROADS  
RECOMMENDED FOR APPROVAL

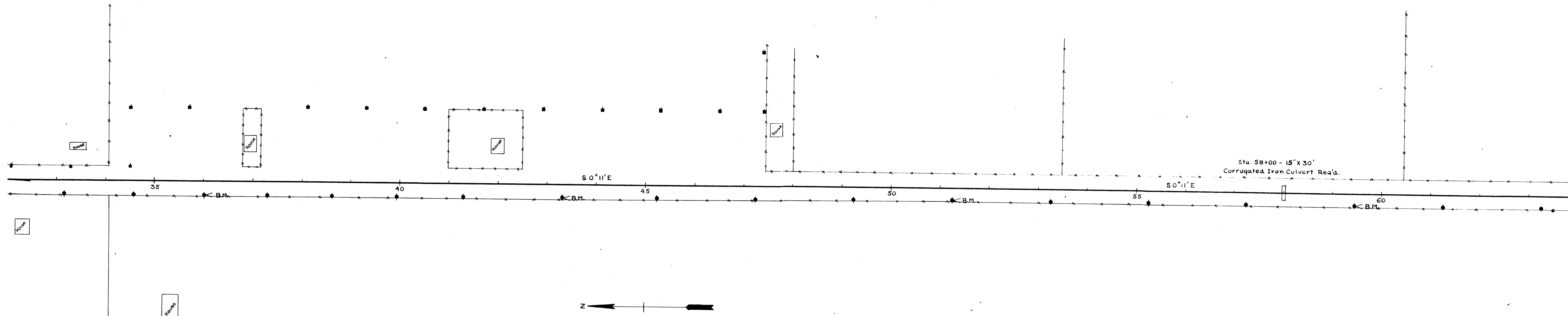
CHIEF ENGINEER, BUREAU OF PUBLIC ROADS  
APPROVED

DIRECTOR, BUREAU OF PUBLIC ROADS



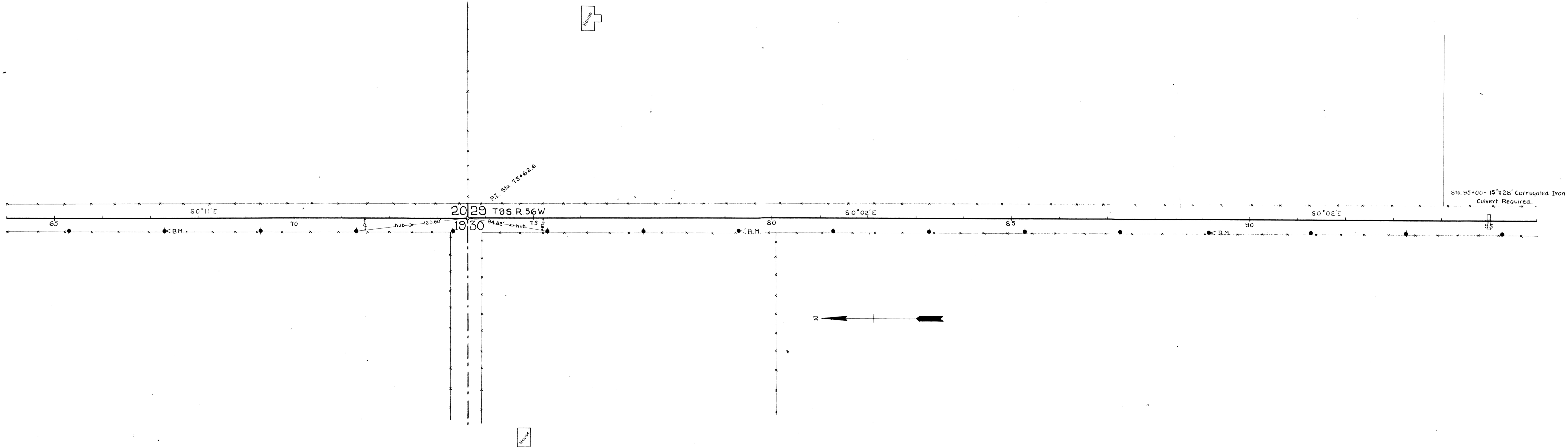
PLAN	NOTE BOOK NO.	SURVEYED	BY	DATE
ALIGNMENT CHECKED				
RT. OF WAY CHECKED				

FED. ROAD DIST. NO.	STATE	FED. AND PROJ. NO.	FISCAL YEAR	SHEET NO.	TOTAL SHEETS
3	Colo	127		4	16



PLAN	NOTE BOOK NO.	SURVEYED PLOTTED ALIGNMENT CHECKED RT. OF WAY CHECKED	BY	DATE

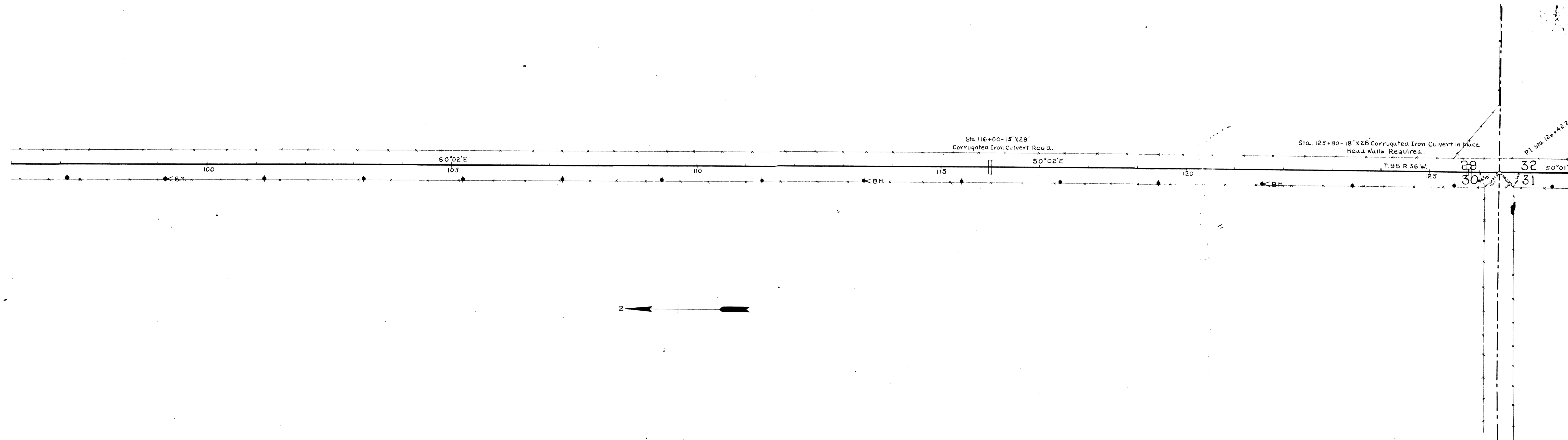
FED. ROAD DIST. NO.	STATE	FED. AND PROJ. NO.	FISCAL YEAR	SHEET NO.	TOTAL SHEETS
3	Colo	127		5	16





PLAN	NOTE BOOK NO.	SURVEYED PLOTTED ALIGNMENT CHECKED RT. OF WAY CHECKED	BY	DATE

FED. ROAD DIST. NO.	STATE	FED. AND PROJ. NO.	FISCAL YEAR	SHEET NO.	TOTAL SHEETS
3	Colo	127		6	16



PLAN	NOTE BOOK NO.	SURVEYED	BY	DATE
ALIGNMENT CHECKED				
RT. OF WAY CHECKED				

FED. ROAD DIST. NO.	STATE	FED. AND PROJ. NO.	FISCAL YEAR	SHEET NO.	TOTAL SHEETS
3	COLO	127		7	16

