

FED. ROAD DIST. NO.	STATE	FED. AID PROJ. NO.	SHEET NO.	TOTAL SHEETS
1	COLORADO	208-C	1	1

REV. 5-18-23 S.D.L.
 BY: 8-15-23 JAW
 9-9-23 H.M.P.
 4-12-29 A.S.S.

INDEX OF SHEETS

- 1. Title Page.
- 2. Typical Cross Section & Summary of Quantities.
- 3. Special Concrete Box Culvert.
- 4. Pile Shoe Detail.
- 5. Standard Siphons.
- 6. Standard Culvert Headwalls.
- 7. Standard Concrete Box Culverts.
- 8-12A Plan and Profile Sheets.
- 13-39. Cross Section Sheets.
- 28. Typical Cross Section and Summary of Quantities for Reopened Project, Const. Div. No. 1.

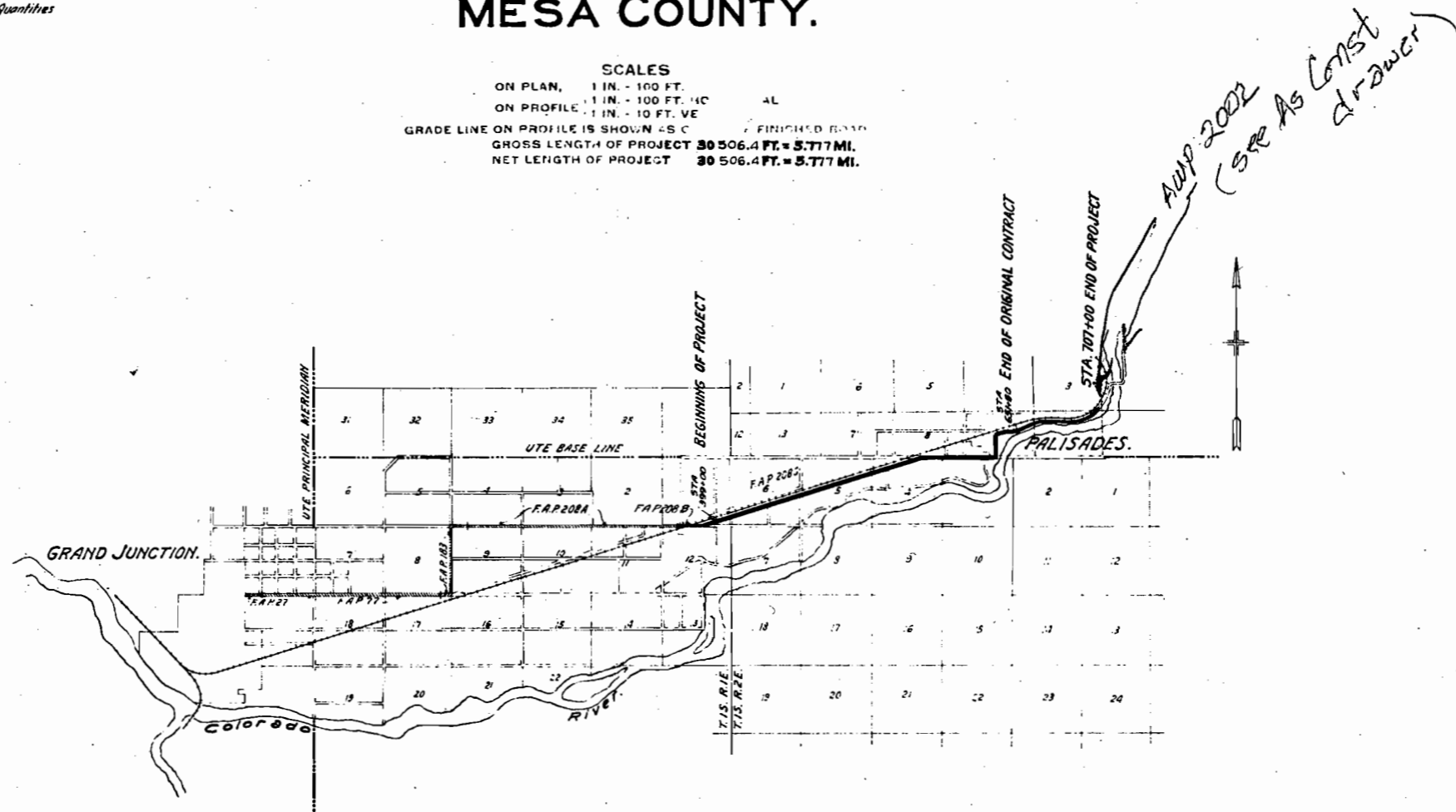
COLORADO
 STATE HIGHWAY DEPARTMENT

PLAN AND PROFILE OF PROPOSED
 FEDERAL AID PROJECT NO 208-C.
 STATE HIGHWAY NO 4
 MESA COUNTY.

LEGEND

- Center Line
- Drain Line
- Fence Line
- Property Line

SCALES
 ON PLAN, 1 IN. = 100 FT.
 ON PROFILE, 1 IN. = 100 FT. H.C. 4L
 1 IN. = 10 FT. V.E.
 GRADE LINE ON PROFILE IS SHOWN AS C FINISHED ROAD
 GROSS LENGTH OF PROJECT 30 506.4 FT. = 5.777 MI.
 NET LENGTH OF PROJECT 30 506.4 FT. = 5.777 MI.

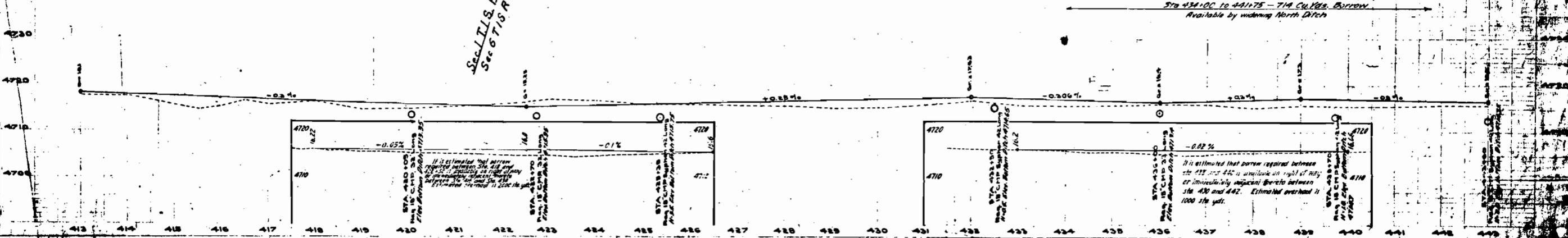
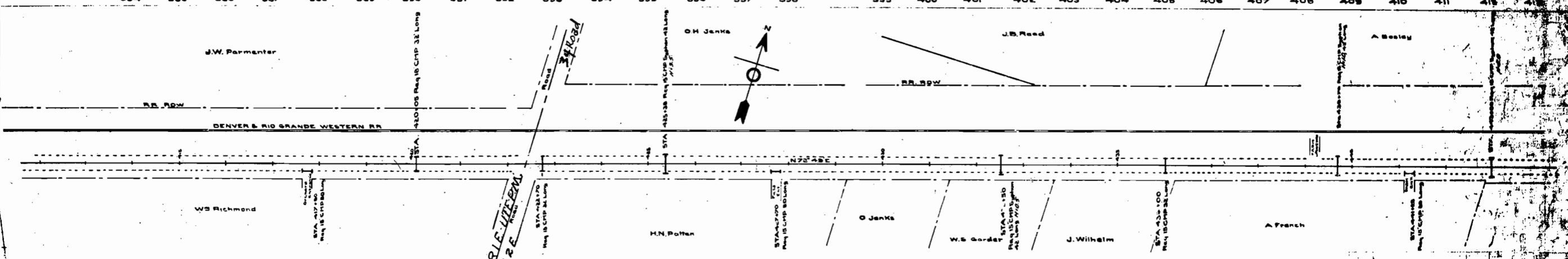
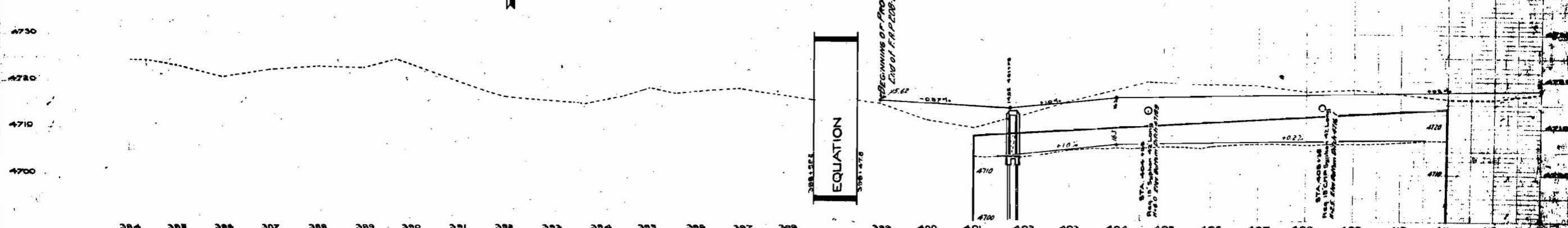
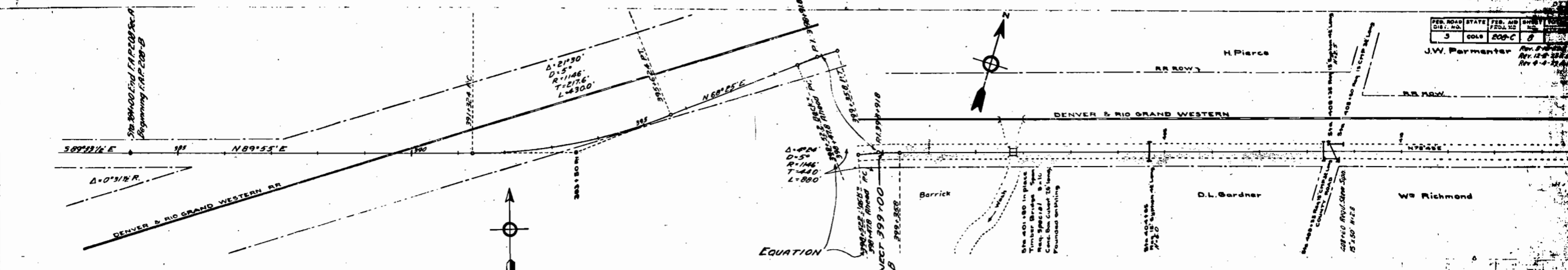


50 ft ROW B1688 P326
 From D&RGW 1988

RECOMMENDED FOR APPROVAL
[Signature]
 ASSISTANT ENGINEER
 APPROVED
[Signature]
 STATE HIGHWAY ENGINEER
 RECOMMENDED FOR APPROVAL
 DIST. ENG. BUREAU PUBLIC ROADS
 RECOMMENDED FOR APPROVAL
 TRIC. ENG. BUREAU PUBLIC ROADS
 APPROVED
 DIRECTOR BUREAU PUBLIC ROADS

FED. ROAD DIST. NO.	STATE	FED. AID FUND NO.	PROJECT NO.
5	COLO.	200-C	0

J.W. Parmenter
Rev. 12-2-23
Rev. 4-4-24



PROJECT NO. 0
DATE 12-2-23

PROJECT NO. 0
DATE 12-2-23

It is estimated that borrow required between Sta. 420 and 422 is approximately 1000 yds. at right of way or immediately adjacent thereto between Sta. 420 and 422. Estimated overhead is 1000 yds.

It is estimated that borrow required between Sta. 432 and 434 is approximately 1000 yds. at right of way or immediately adjacent thereto between Sta. 432 and 434. Estimated overhead is 1000 yds.

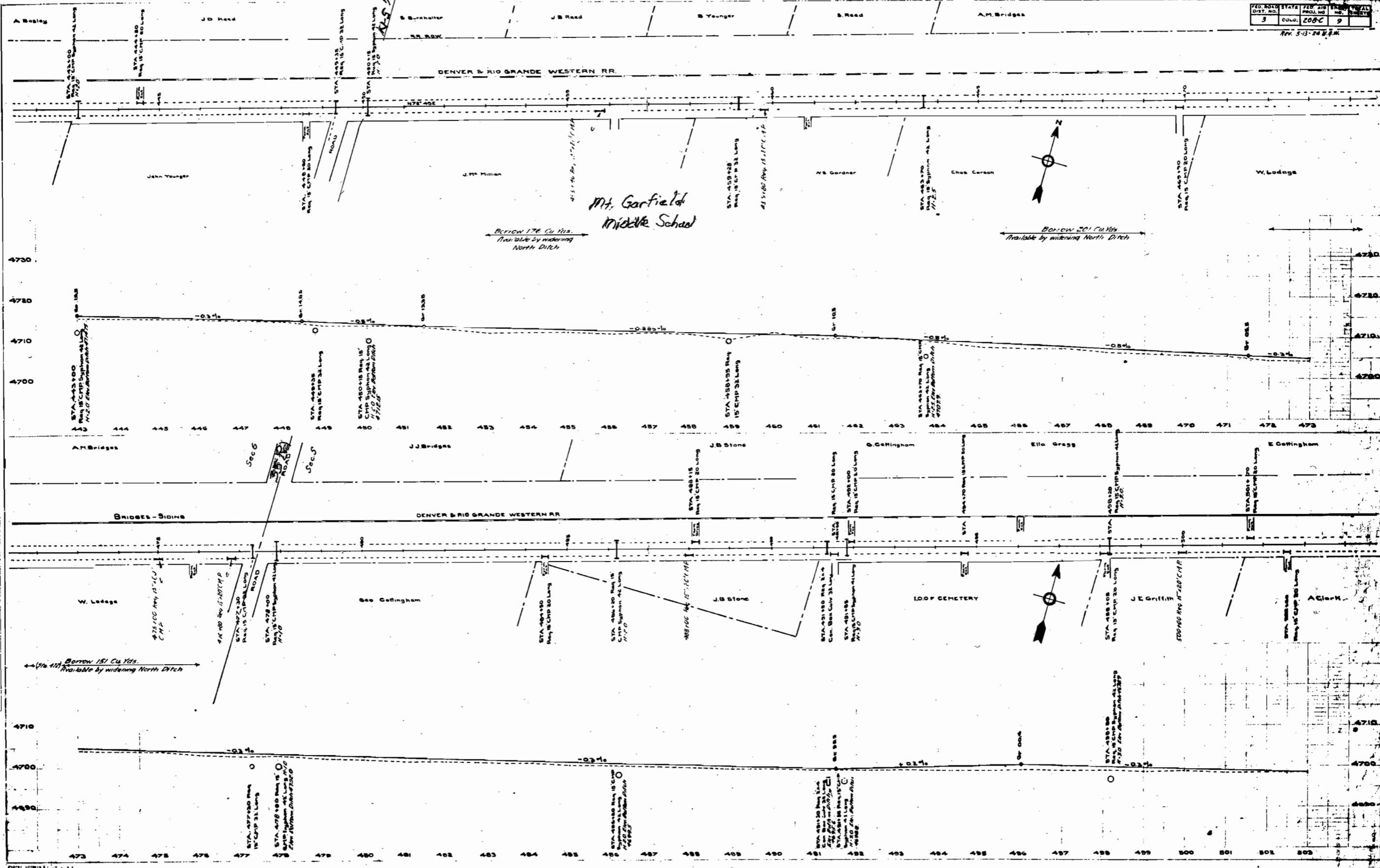
Sta 434+00 to 441+75 - 774 Cu. Yds. Borrow Available by widening North Ditch

FED. ROAD DIST. NO.	STATE	FED. AID PROJ. NO.	TRUCK NO.	SCALE
3	COLO.	208C	9	

REV. 5-13-24 B.M.

PLAN
 S. E. Thompson
 A. M. Bridges
 J. P. Cunningham

PROFILE
 S. E. Thompson
 A. M. Bridges
 J. P. Cunningham

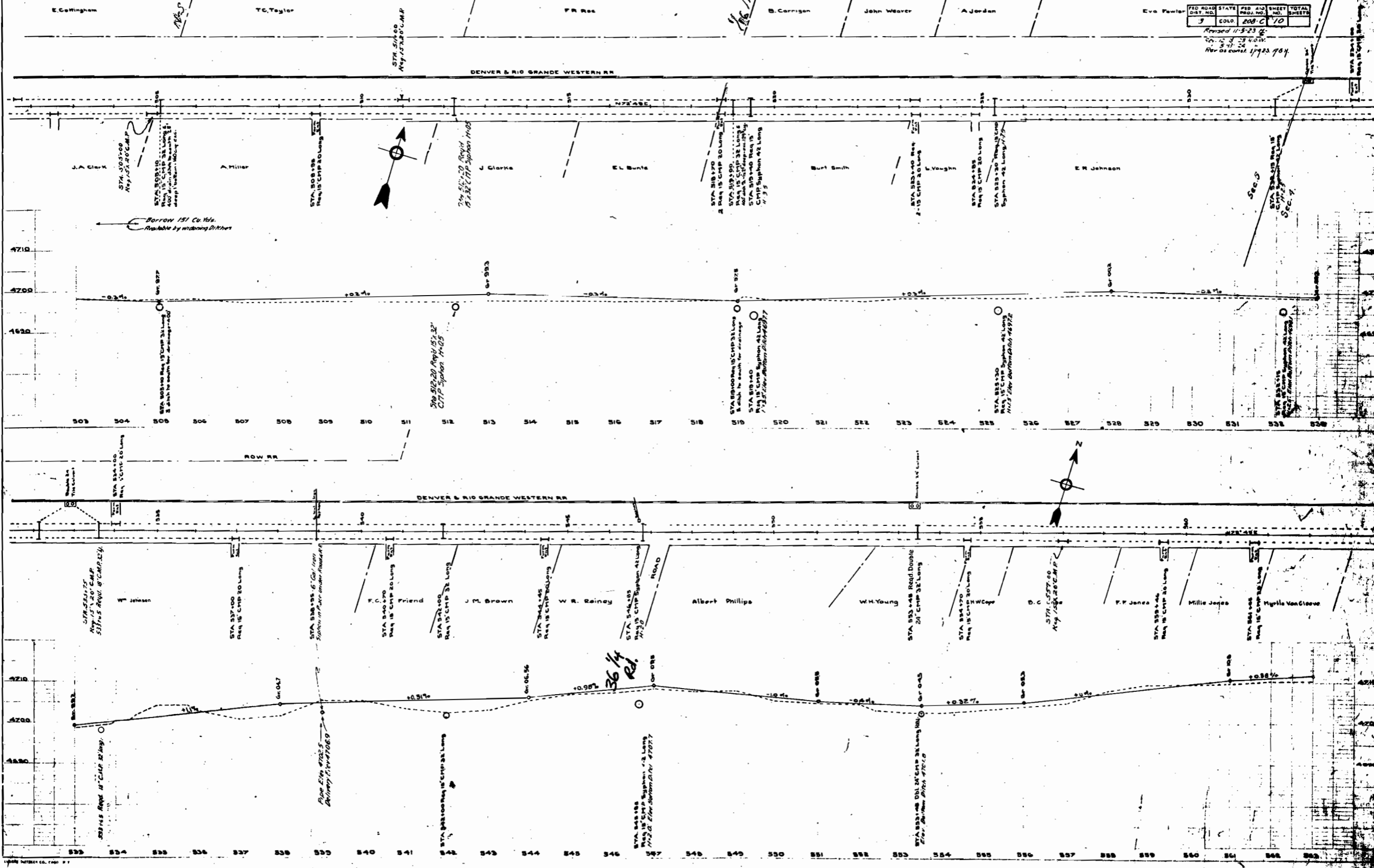


PLAN	DATE	BY	CHKD
11/15/23	11/15/23	J.A. Clark	J.A. Clark
11/15/23	11/15/23	A. Miller	A. Miller
11/15/23	11/15/23	J. Clarke	J. Clarke
11/15/23	11/15/23	E.L. Bunte	E.L. Bunte
11/15/23	11/15/23	Burt Smith	Burt Smith
11/15/23	11/15/23	L. Vaughn	L. Vaughn
11/15/23	11/15/23	E.R. Johnson	E.R. Johnson

PROFILE	DATE	BY	CHKD
11/15/23	11/15/23	J.A. Clark	J.A. Clark
11/15/23	11/15/23	A. Miller	A. Miller
11/15/23	11/15/23	J. Clarke	J. Clarke
11/15/23	11/15/23	E.L. Bunte	E.L. Bunte
11/15/23	11/15/23	Burt Smith	Burt Smith
11/15/23	11/15/23	L. Vaughn	L. Vaughn
11/15/23	11/15/23	E.R. Johnson	E.R. Johnson

FED. ROAD DIST. NO.	STATE	FED. AID PROJ. NO.	SHEET NO.	TOTAL SHEETS
3	COLO.	208-C	70	

Revised 11-5-23
 11/15/23
 Rev as noted 11/23/23



S.H. 6 50 ft. ROW

