

MICROFILMED

FED. ROAD DIST. NO.	STATE	FED. AID PROJ. NO.	SHEET NO.	TOTAL SHEETS
		240-1	1	

Eagle - West

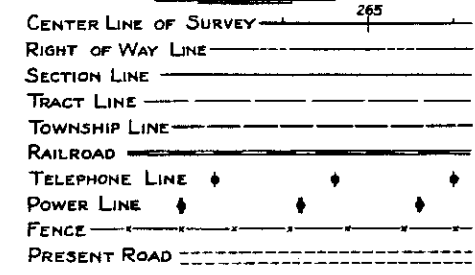
COLORADO STATE HIGHWAY DEPARTMENT

PLAN AND PROFILE OF PROPOSED FEDERAL AID PROJECT NO. 240-1 STATE HIGHWAY NO. 4 EAGLE COUNTY

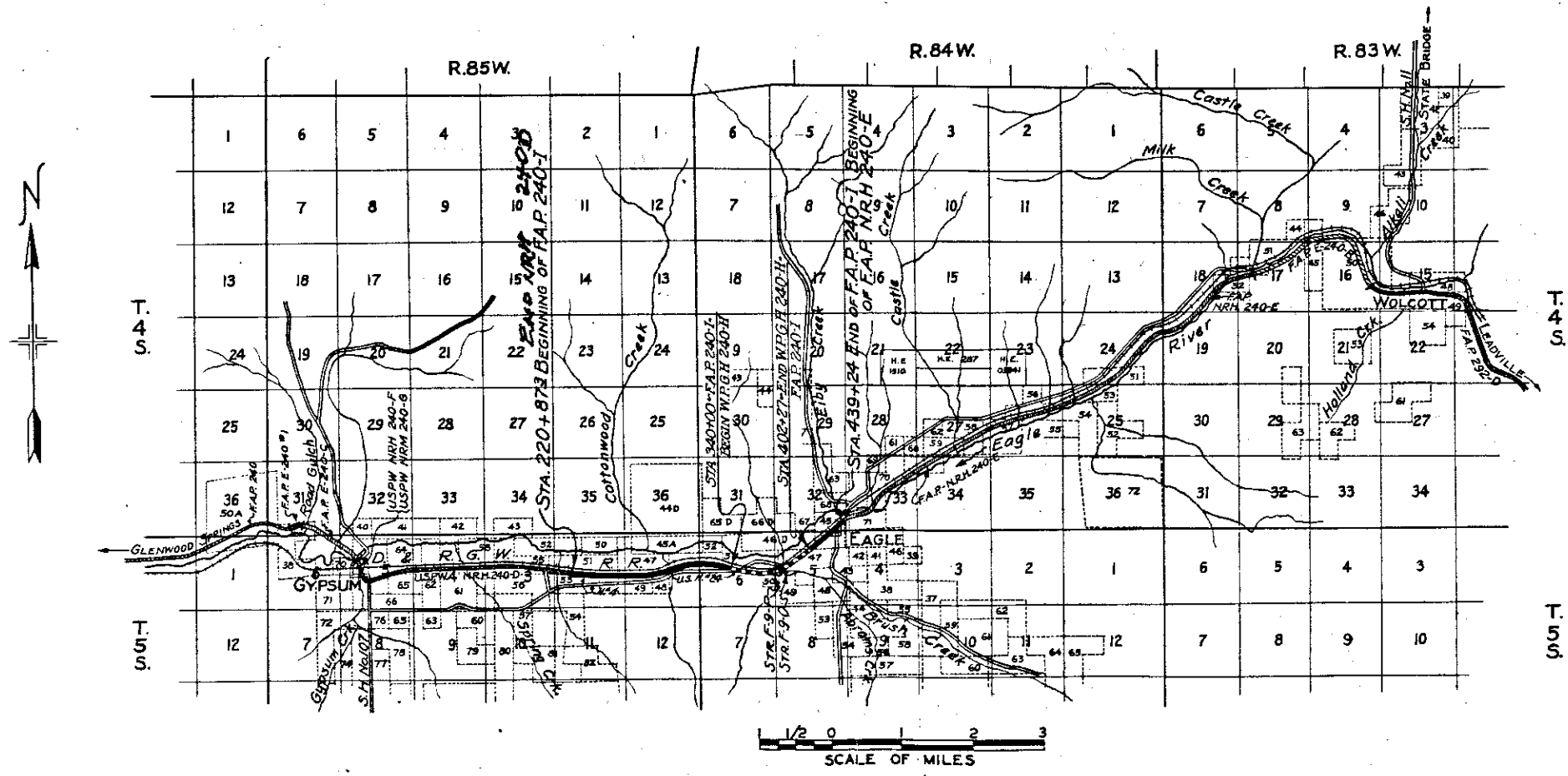
INDEX OF SHEETS

- 1. SKETCH MAP AND TITLE
 - 2. TYPICAL SECTION AND SUMMARY OF APPROXIMATE QUANTITIES
 - 3. LIST OF STRUCTURES
 - 4. CONCRETE BOX CULVERTS
 - 5. REINFORCED CONCRETE CULVERT PIPE
 - 6. STANDARD HEADWALLS FOR C.M.P. CULVERTS
 - 7. WIRE CABLE GUARD FENCE
 - 8. WIRE FENCE (UNTREATED WOOD POSTS) AND MARKER POSTS
 - 9. METHODS FOR SUPERELEVATION AND WIDENING OF CURVES
 - 10. TYPICAL SIDE APPROACH ROADS/ROADWAY CONSTRUCTION TRAFFIC SIGNS
- | |
|---------|
| M-104-D |
| M-112-C |
| M-102-E |
| M-20-A |
| M-24-FX |
| M-1-A |
| M-2-B |
- 11-16 PLAN AND PROFILE
17-44 CROSS SECTIONS

CONVENTIONAL SIGNS



SCALES ON ORIGINAL TRACINGS
 ON PLAN, 1 IN. = 100 FT.
 ON PROFILE 1 IN. = 100 FT. HORIZONTAL
 1 IN. = 10 FT. VERTICAL
 GRADE LINE ON PROFILE IS SHOWN AS GRADE OF FINISHED ROAD
 GROSS LENGTH OF PROJECT 21,832.3 FEET = 4.134 MILES
 NET LENGTH OF PROJECT 15,588.8 FEET = 2.954 MILES



NOTE
 It is recommended that bidders on this project go over the plan details with one of the following field representatives of this department.
 H. L. Jenness, Division Engineer, Glenwood Springs
 W. L. Sheehan, Resident Engineer, Eagle

RECOMMENDED FOR APPROVAL *4/3/50*
J. Williams
 ASSISTANT ENGINEER
 APPROVED
Chas. Blair
 STATE HIGHWAY ENGINEER
 RECOMMENDED FOR APPROVAL
 DIST. ENGR. BUREAU PUBLIC ROADS
 RECOMMENDED FOR APPROVAL
 CHIEF ENGR. BUREAU PUBLIC ROADS
 APPROVED
 DIRECTOR BUREAU PUBLIC ROADS

Sec. 32, T. 4S, R. 84 W

FED. ROAD DIST. NO.	STATE	FED. AID PROJ. NO.	SHEET NO.	TOTAL SHEETS
3	COLO.	240-I	16	

Sta 419+00 Req'd 18'x30' C.M.P. Side Drain, 20 Cu Yds. Embank. for Road Appr. Rt. & Remove 8'x14' W.B.C.

Sta 420+50 Req'd 18'x30' C.M.P. Side Drain, 20 Cu Yds. Embank. for Road Appr. Lt. & Remove 8'x30' W.B.C.

Sta 421+ Req'd Move Scales off R.O.W. (Force Account)

Sta 421+70 to 423+30 Req'd Remove 10'x160' C.M.P.

Sta 425+ Req'd Move Coal House off R.O.W. (Force Account)

Sta 423+30 to 426+85 Req'd 1775 Sq. Ft. Concrete Sidewalk Rt. (Details Sh. 2)

Sta 421+75 Req'd Remove 8'x30' W.B.C.

Sta 422+50 Req'd 18'x150' C.M.P. Side Drain & 50 Cu Yds. Embank. for Road Approach Rt.

Sta 423+00 Req'd 20 Cu Yds. Embank. for Road Approach Lt.

Sta 428+15 to 431+80 Req'd 1675 Sq. Ft. Concrete Side-walk Rt. (Det. Sh. 2)

Sta 432+60 to 435+50 Req'd 1470 Sq. Ft. Concrete Sidewalk Rt. (Details Sh. 2)

Sta 423+15 Req'd Remove 70 Lin. Ft. Concrete Cross Walk.

Sta 421+40 to 427+00 Req'd Remove 650 Lin. Ft. Concrete Sidewalk

Sta 426+50 Req'd 18'x30' C.M.P. Side Drain & 20 Cu Yds. Embank. for Rd. Appr. Lt.

Sta 428+25 Req'd 18'x58' C.M.P. Cross Culvert with 2 Std. Head-walls; 20 Cu Yds. Uncl. Excav. for Ditches & Remove 12'x18' W.B.C.

Sta 429+ to 431+ Req'd Move 3 Camp Cottages, Shed & House off R.O.W. (Force Account)

Sta 424+ Req'd Move Chicken Shed off R.O.W. (Force Account)

Sta 425+20 Req'd 18'x30' C.M.P. Side Drain & 20 Cu Yds. Embank. for Road Appr. Lt.

Sta 428+00 Req'd Remove 60 Lin. Ft. Concrete Sidewalk

Sta 427+50 Req'd 50 Cu Yds. Embank. for Road Appr. Rt.

Sta 429+65 Req'd 50 Cu Yds. Embank. for Road Approach Lt.

Sta 430+20 Req'd 18'x62' C.M.P. Cross Culvert with 2 Std. Headwalls; 15 Cu Yds. Uncl. Excav. for Ditches & Remove 18'x20' C.M.P.

Sta 431+15 Req'd Remove 18'x40' C.M.P.

Sta 432+30 Req'd 25 Cu Yds. Embank. for Road Appr. Rt.

Sta 432+65 Req'd Remove 1 1/2'x60' Conduit.

Sta 432+70 Req'd Remove 35 Lin. Ft. Concr. Sidewalk.

Sta 432+50 Req'd 18'x62' C.M.P. Cross Culvert with 2 Std. Headwalls; 15 Cu Yds. Uncl. Excav. for Ditches & Remove 8'x44' W.B.C.

Sta 432+65 Req'd 40 Cu Yds. Embank. for Road Appr. Lt.

Sta 433+ to 434+ Req'd Move Garage, Shed & Barn off R.O.W. (Force Acc't)

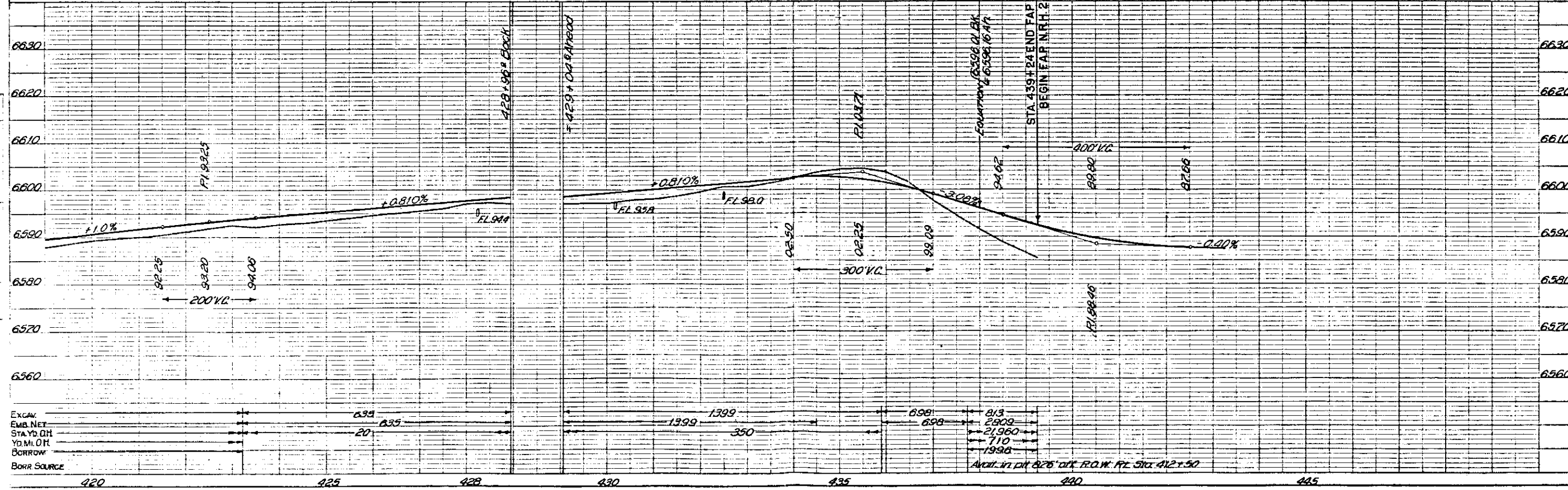
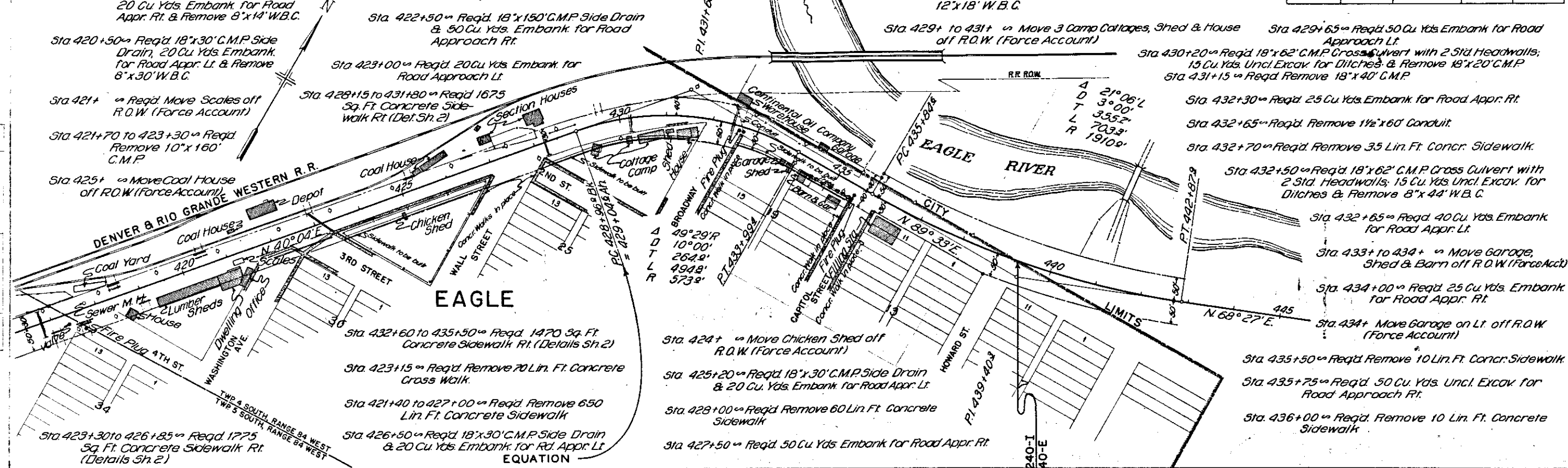
Sta 434+00 Req'd 25 Cu Yds. Embank. for Road Appr. Rt.

Sta 434+ Req'd Move Garage on Lt. off R.O.W. (Force Account)

Sta 435+50 Req'd Remove 10 Lin. Ft. Concr. Sidewalk.

Sta 435+75 Req'd 50 Cu Yds. Uncl. Excav. for Road Approach Rt.

Sta 436+00 Req'd Remove 10 Lin. Ft. Concrete Sidewalk



NOTE: All poles encroaching on construction are to be moved by owners. Fencing requirements, gates & Right of Way Markers are tabulated on Sheet 2.

NOTE: Fire Hydrants, Valves & Service Connections encroaching on construction are to be moved by the City of Eagle.

NOTE: Earthwork Quantities shown on profile Sta. 392+52 to 402+27 do not receive Federal Aid.

FED. ROAD DIST. NO.	STATE	FED. AID PROJ. NO.	SHEET NO.	TOTAL SHEETS
3	COLO.	240-1	15	

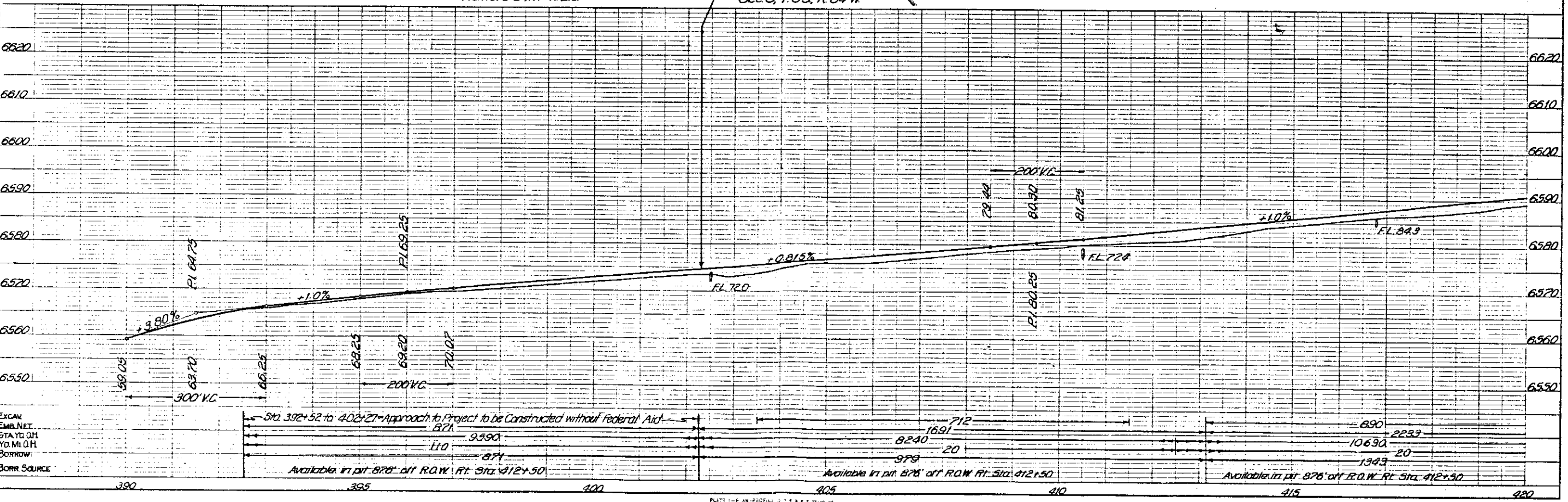
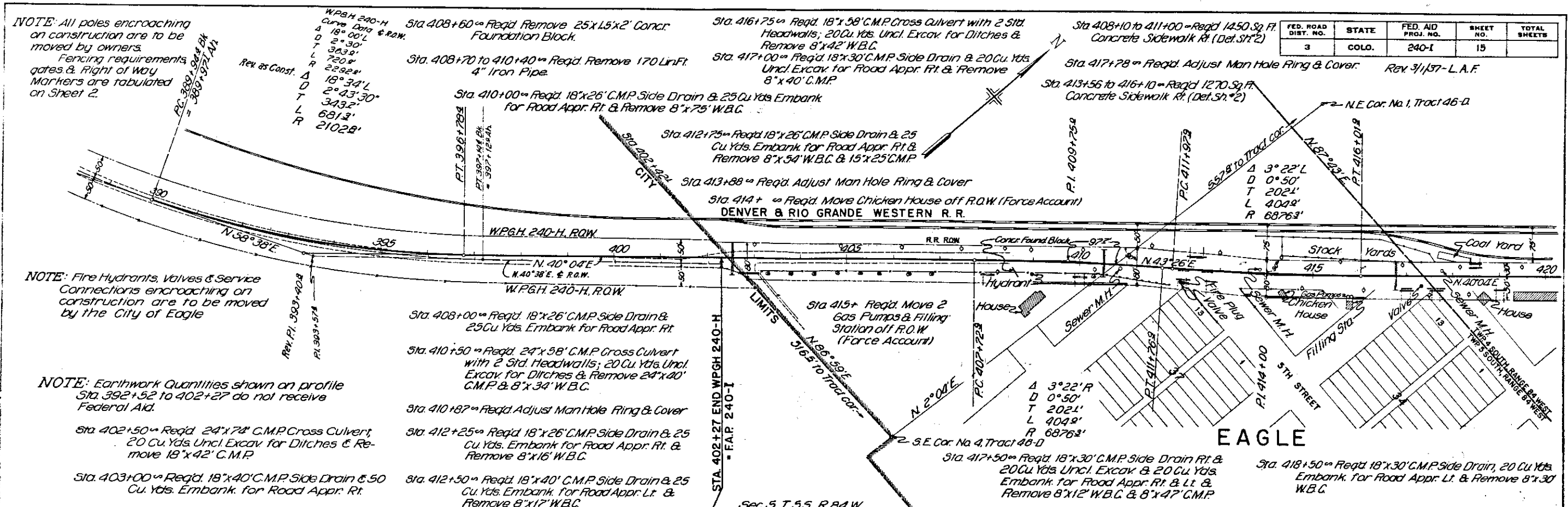
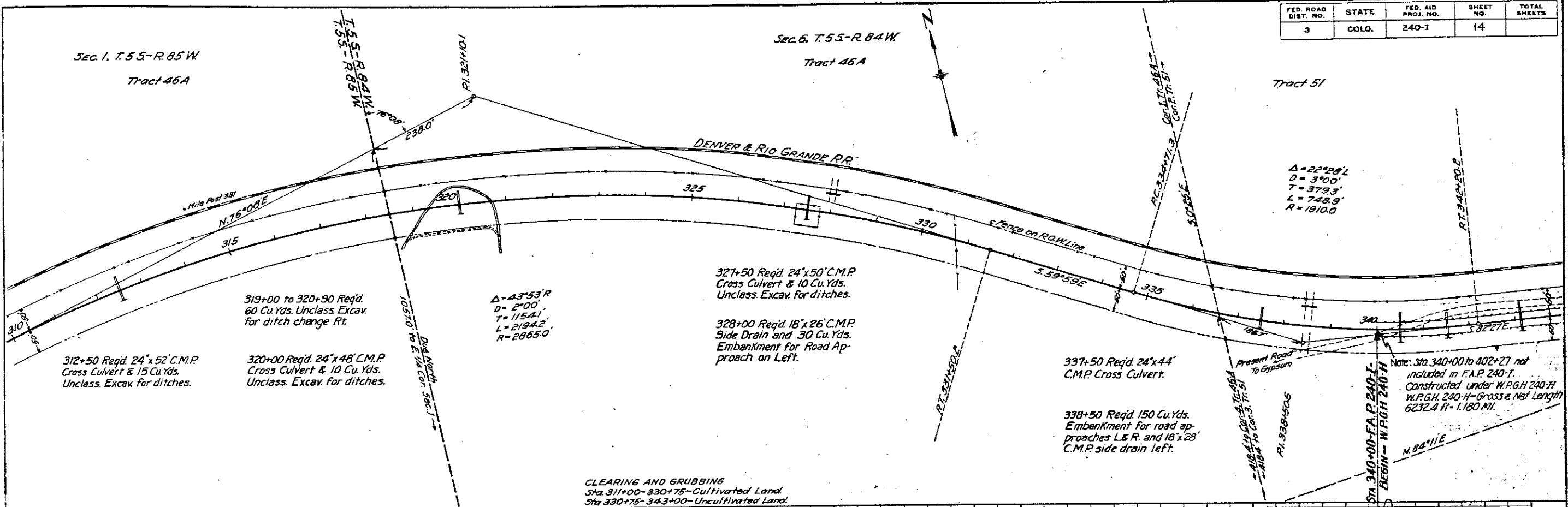


PLATE 1 - PLAN PROFILE, 1" = 40' & 1" = 10'

FED. ROAD DIST. NO.	STATE	FED. AID PROJ. NO.	SHEET NO.	TOTAL SHEETS
3	COLD.	240-1	14	



CLEARING AND GRUBBING
 Sta. 311+00-330+75 - Cultivated Land
 Sta. 330+75-343+00 - Uncultivated Land

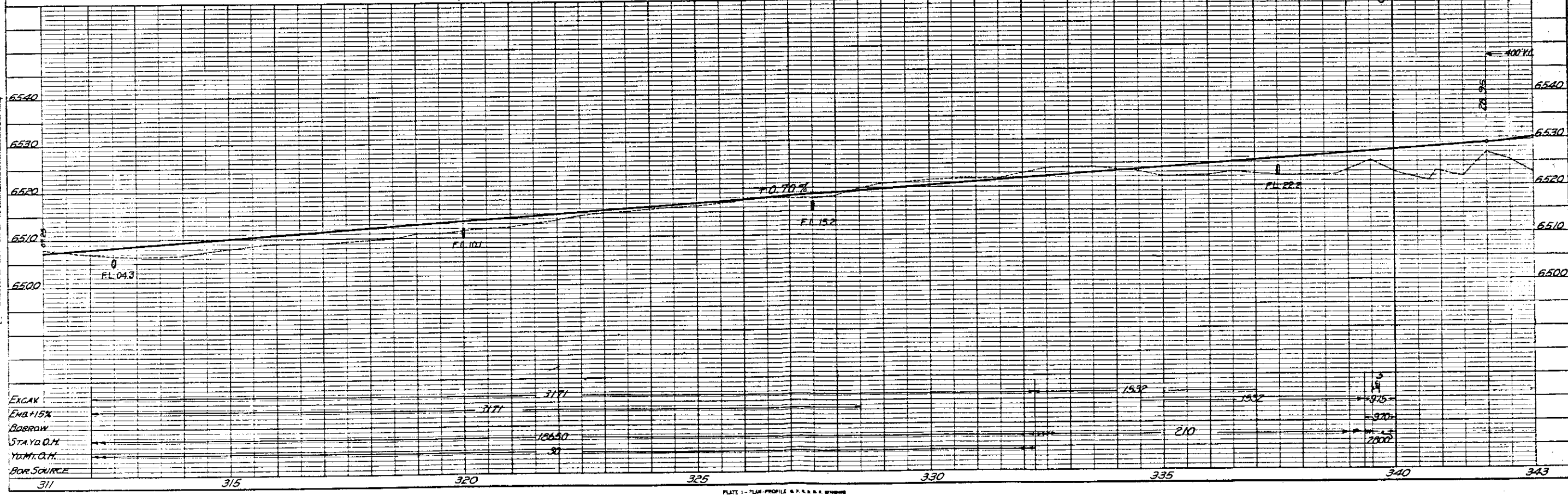


PLATE 1 - PLAN PROFILE & P.A. & S.W. STATIONS
 HELMUTH & SMITH CO., NEW YORK

FED. ROAD DIST. NO.	STATE	FED. AID PROJ. NO.	SHEET NO.	TOTAL SHEETS
3	COLO.	240-1	13	

$\Delta = 13^{\circ}03'1$
 $D = 1'00'$
 $T = 655.4'$
 $L = 1305.0'$
 $R = 5730.0'$

Tract 47

Sec. 1, T.55-R.85W

Tract 46-A

DENVER & RIO GRANDE WESTERN RR

Fence on R.O.W. Line

N.76°08'E

285+00 Req'd. 24"x44" C.M.P. Cross Culvert & 35 Cu.Yds. Unclass. Excav. for ditches.

288+00 Req'd. Double 36"x54" C.M.P. Cross Culvert.

285+85 to 288+00 Req'd. 240 Cu.Yds. Unclass. Excav. for ditch change on Rt.

295+50 Req'd. 24"x48" C.M.P. Cross Culvert & 10 Cu.Yds. Unclass. Excav. for ditches

301+50 Req'd. 24"x48" C.M.P. Cross Culvert & 15 Cu.Yds. Unclass. Excav. for ditches.

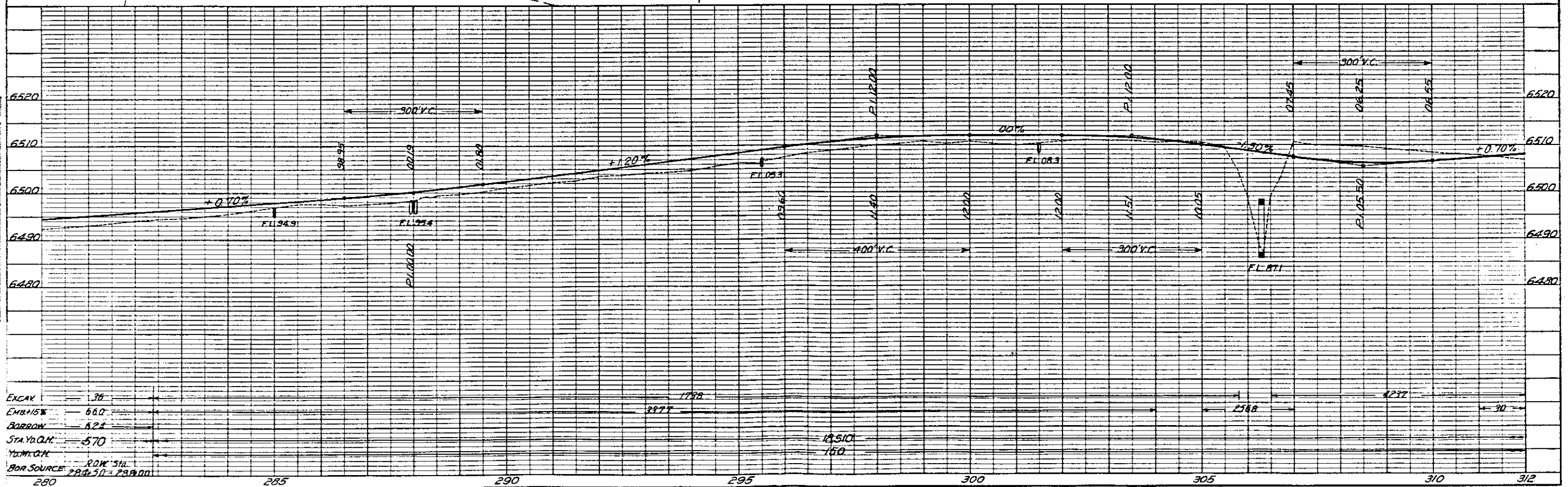
302+00 Req'd. 50 Cu.Yds Embankment for road approaches L&R. and 18"x26" C.M.P. side drain Rt.

306+30 Req'd. 10x10x74' Concrete Box Culvert, Type 10-II, (64" SK.) & 250 Cu.Yds. Unclass. Excav. for channel improvement.

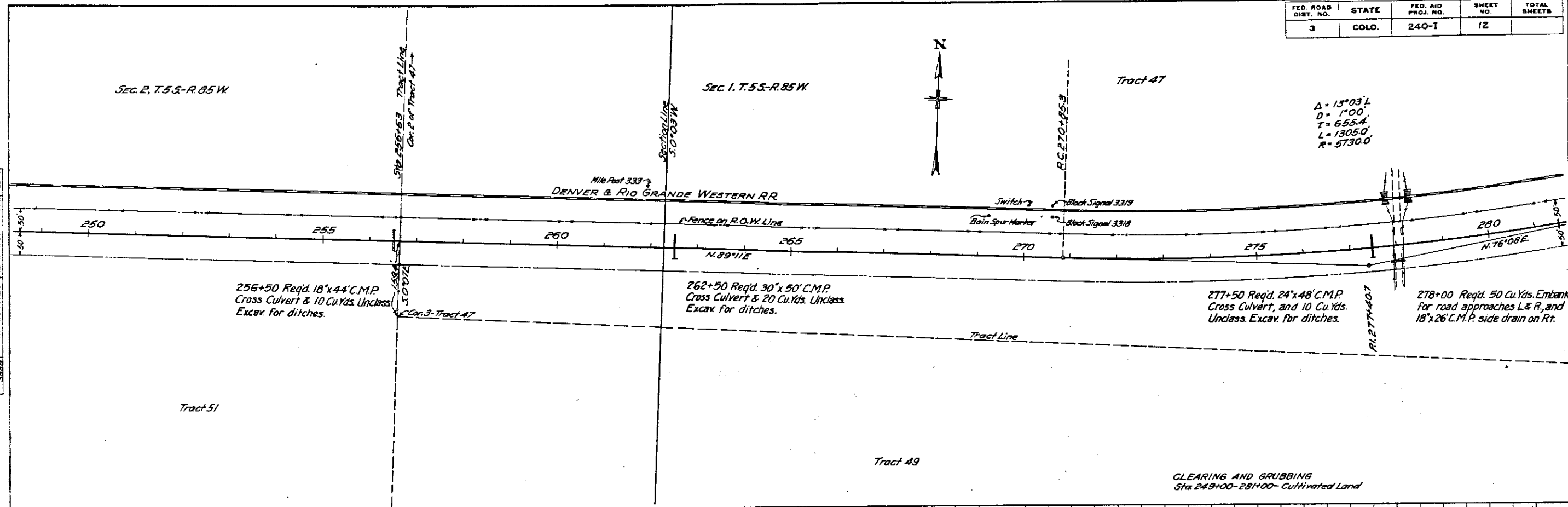
305+76 to 306+80 Req'd. 2-104 ft. lengths Guard Fence R&L.

$\Delta = 43^{\circ}53'R$
 $D = 2'00'$
 $T = 1154.1'$
 $L = 2194.2'$
 $R = 2865.0'$

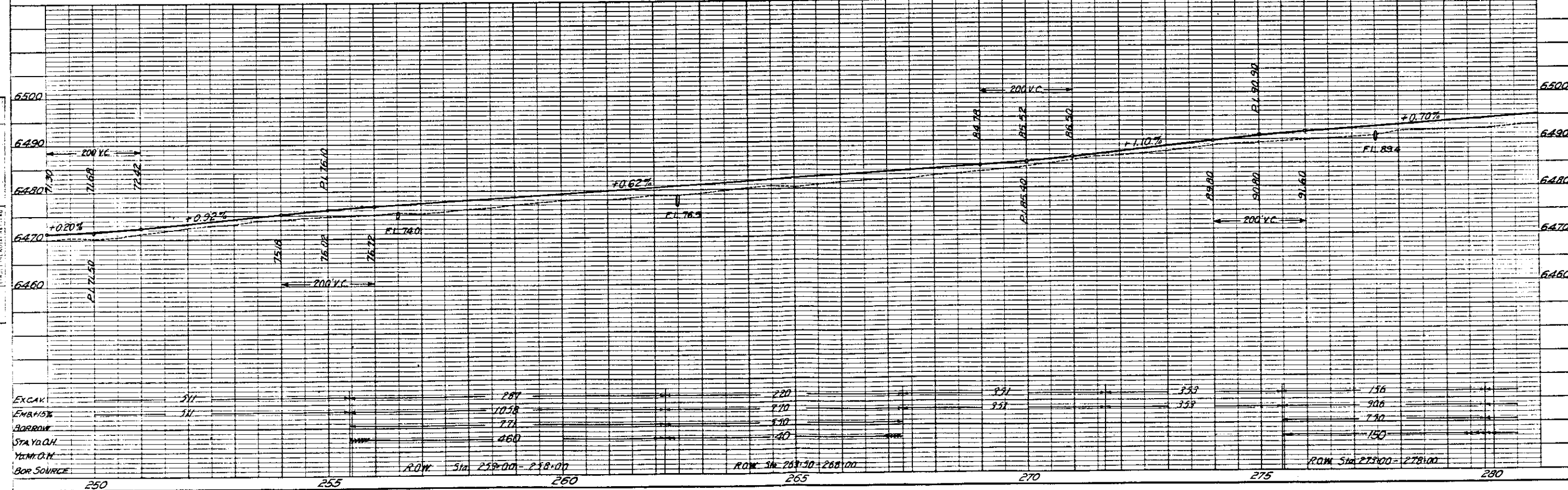
CLEARING AND GRUBBING
Sta 280+00-312+00-Cultivated Land



FED. ROAD DIST. NO.	STATE	FED. AID PROJ. NO.	SHEET NO.	TOTAL SHEETS
3	COLO.	240-I	12	



$\Delta = 13^{\circ}03' L$
 $D = 1^{\circ}00'$
 $T = 655.4$
 $L = 1305.0$
 $R = 5730.0$



FED. ROAD DIST. NO.	STATE	FED. AID PROJ. NO.	SHEET NO.	TOTAL SHEETS
3	COLO.	240-1	11	

NOTE: - All poles encroaching on construction are to be moved by owners. Fencing Requirements, Gates, and Right of Way Markers are tabulated on Sheet No. 2.

$\Delta = 8^{\circ}49' L$
 $D = 1^{\circ}00'$
 $T = 441.7'$
 $L = 881.7'$
 $R = 5730.0'$

SECTION 2, T.55-R. 85 W
 TRACT 51

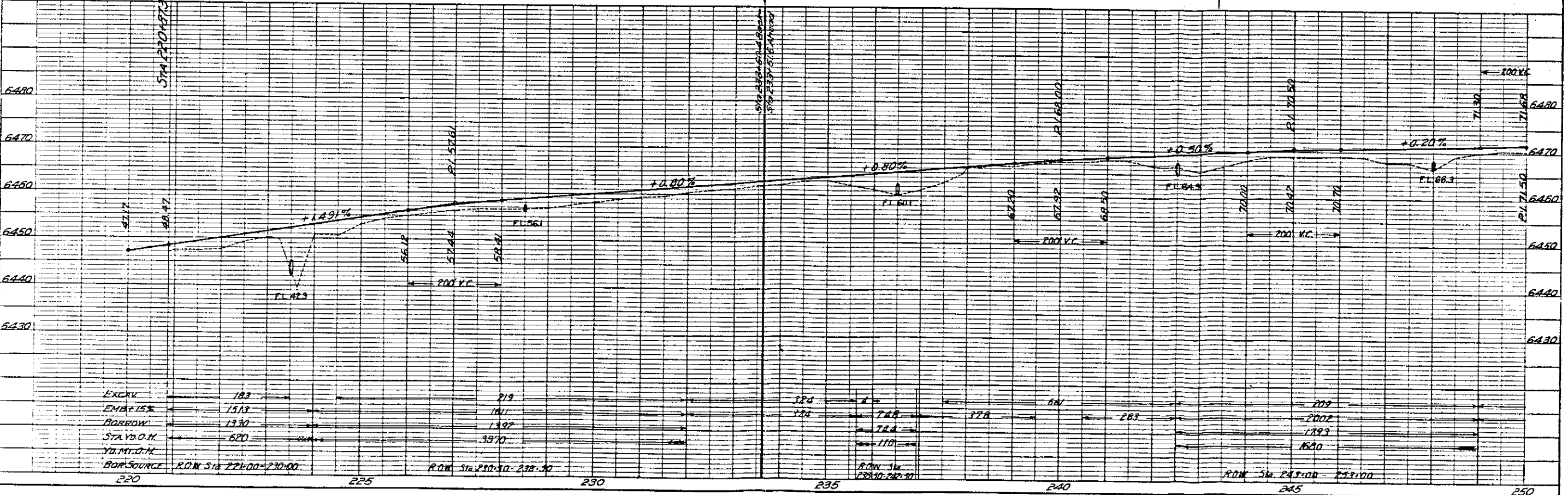
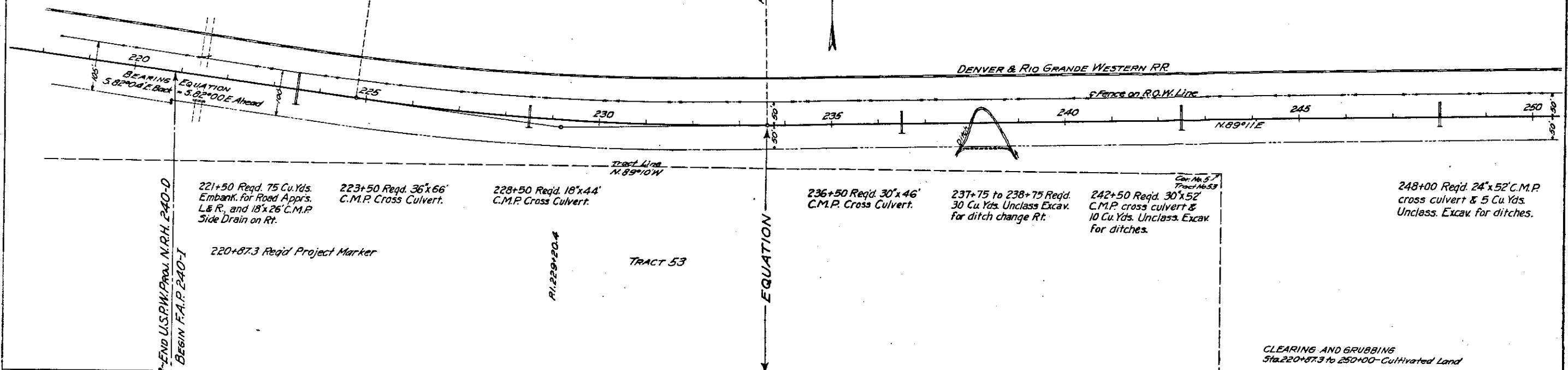


PLATE 1 - PLAN PROFILE & P. & B. & E. DRAWING
 PREPARED BY ENGINEER