

Fruita - W.

FED. ROAD DIST. NO.	STATE	FED. AID PROJ. NO.	SHEET NO.	TOTAL SHEETS
8	COLO.	242 E	1	1

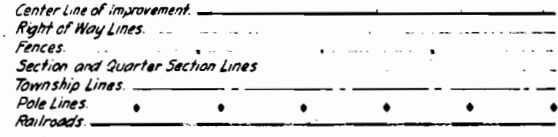
# COLORADO STATE HIGHWAY DEPARTMENT

## PLAN AND PROFILE OF PROPOSED FEDERAL AID PROJECT NO. 242 E STATE HIGHWAY NO. 4 MESA COUNTY

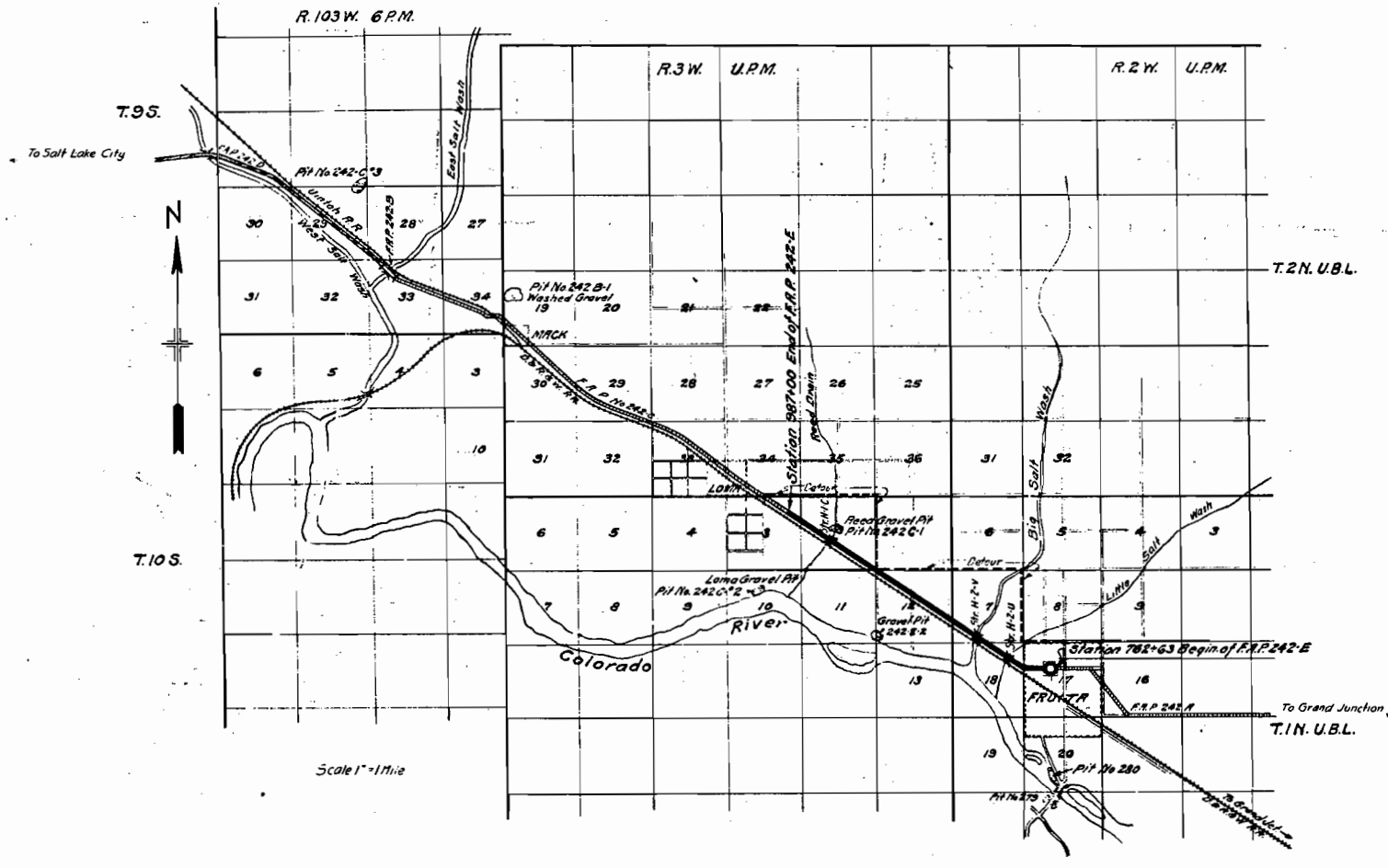
### INDEX OF SHEETS

- 1 Title Sheet
- 2 Typical Cross Section and Summary
- 3 Standard M-24-E Wire Fence and Marker Post
- 4 M-102-D Headwalls for Pipe Culverts
- 5 M-20-E Wire Cable Guard Fence
- 6 M-121-A Siphons
- 7 Treated Timber Trestle P-115 A. Sta 791+00 to 793+55
- 8 " " " Sta 817+92 to 819+32
- 9 " " " Sta 943+65 to 944+36
- 10 Special Concrete Box Culvert, 14' x 6'
- 11-18 Plan and Profile Sheets
- 19-48 Cross Section Sheets

### CONVENTIONAL SIGNS



**SCALES**  
 ON PLAN, 1 IN. = 100 FT.  
 ON PROFILE 1 IN. = 100 FT. HORIZONTAL  
 1 IN. = 10 FT. VERTICAL  
 GRADE LINE ON PROFILE IS SHOWN AS GRADE OF FINISHED ROAD  
 GROSS LENGTH OF PROJECT } 22 403.0 Ft = 4.243 Mi.  
 NET LENGTH OF PROJECT }

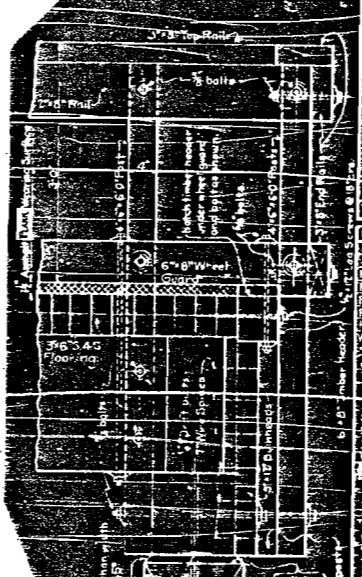
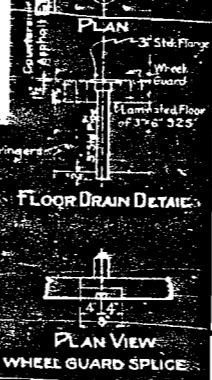
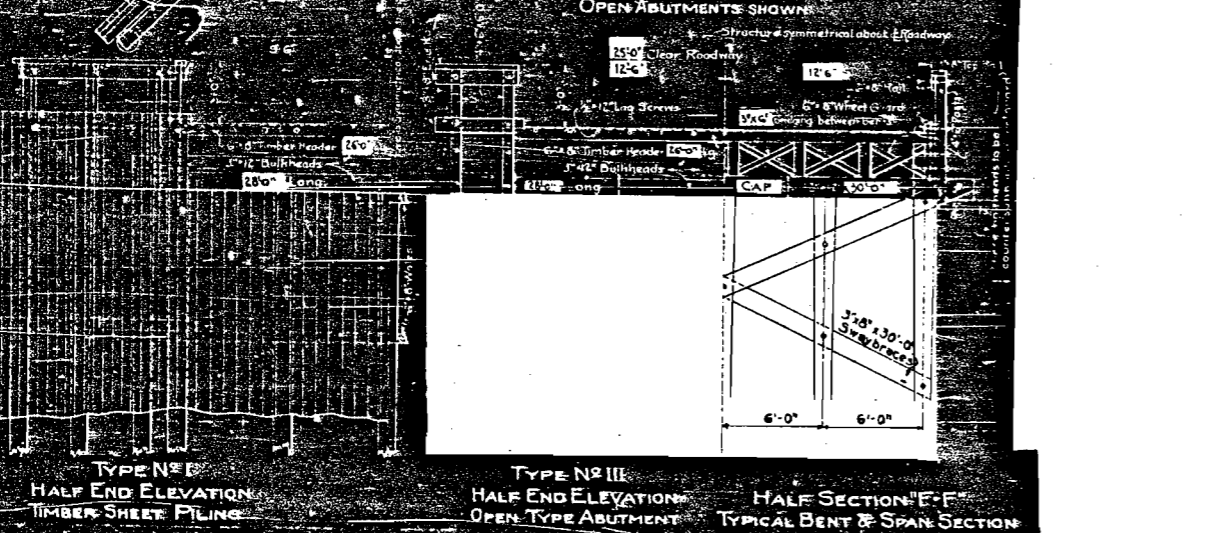
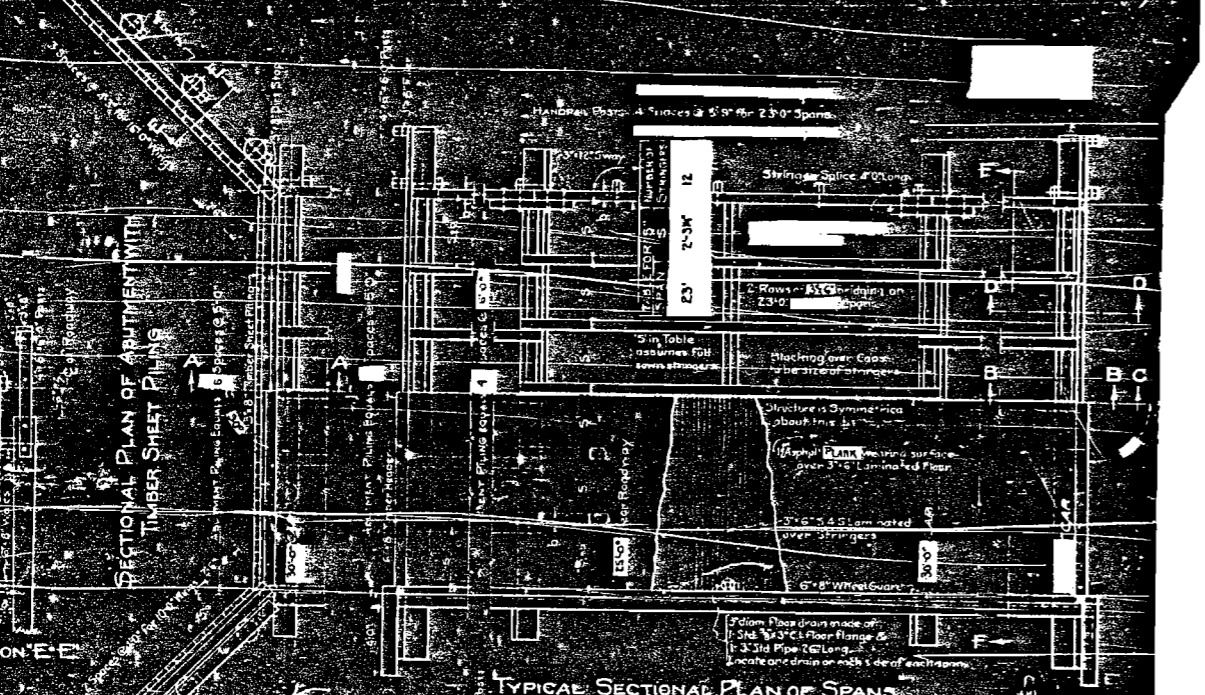
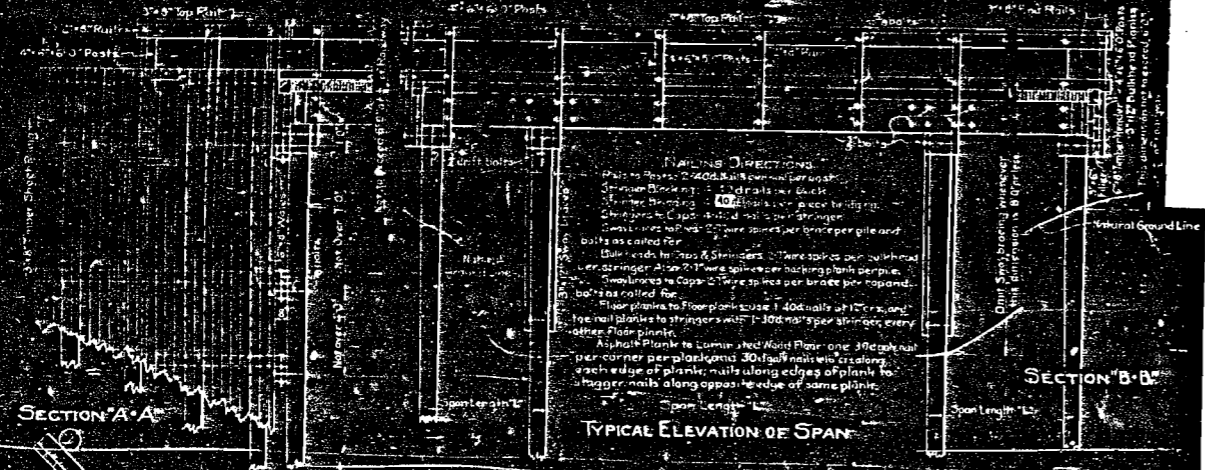


RECOMMENDED FOR APPROVAL 2/27/51  
*W. J. ...*  
 ASSISTANT ENGINEER  
 APPROVED  
*Charles ...*  
 STATE HIGHWAY ENGINEER  
 RECOMMENDED FOR APPROVAL  
 [Redacted]  
 DIST. ENG. BUREAU PUBLIC ROADS  
 RECOMMENDED FOR APPROVAL  
 [Redacted]  
 CHIEF ENG. BUREAU PUBLIC ROADS  
 APPROVED  
 [Redacted]  
 DIRECTOR BUREAU PUBLIC ROADS









**ONE ABUTMENT**

SHINGLED-TREATED TIMBER SHEET PILING	40	100	4000
RAIL DLOCKS	1	100	100
WALLES	1	100	100
CAP	1	100	100
TIMBER HEADER	1	100	100
BULKHEADS	1	100	100
STRINGER BLOKING	1	100	100
FLOORING	545	100	54500
DIRT STOPS	3	100	300
BOLLERS	4	100	400
<b>TOTAL TREATED TIMBER</b>			<b>1391</b>
<b>UNTREATED TIMBER</b>			<b>1391</b>
<b>TOTAL</b>			<b>2782</b>

**ONE BENT**

SHINGLED-TREATED TIMBER SHEET PILING	37	100	3700
RAIL DLOCKS	1	100	100
WALLES	1	100	100
CAP	1	100	100
TIMBER HEADER	1	100	100
BULKHEADS	1	100	100
STRINGER BLOKING	1	100	100
FLOORING	545	100	54500
DIRT STOPS	3	100	300
BOLLERS	4	100	400
<b>TOTAL TREATED TIMBER</b>			<b>1391</b>
<b>UNTREATED TIMBER</b>			<b>1391</b>
<b>TOTAL</b>			<b>2782</b>

**ONE WING**

SHINGLED-TREATED TIMBER SHEET PILING	40	100	4000
RAIL DLOCKS	1	100	100
WALLES	1	100	100
CAP	1	100	100
TIMBER HEADER	1	100	100
BULKHEADS	1	100	100
STRINGER BLOKING	1	100	100
FLOORING	545	100	54500
DIRT STOPS	3	100	300
BOLLERS	4	100	400
<b>TOTAL TREATED TIMBER</b>			<b>1391</b>
<b>UNTREATED TIMBER</b>			<b>1391</b>
<b>TOTAL</b>			<b>2782</b>

**BOLTS & WASHERS FOR ONE SPAN OF SUPERSTRUCTURE**

Posts to Rails	1/2"	10	10
Posts to Wheel Guards	1/2"	10	10
Posts to Stringers	1/2"	10	10
Posts to Cap	1/2"	10	10
Posts to Stringer Splices	1/2"	10	10
Stringer Splices	1/2"	10	10
Washers 3/4" C.I. G.	1/2"	10	10
<b>TOTAL WEIGHT</b>			<b>150</b>

**BOLTS & WASHERS FOR ONE ABUTMENT**

Cap to Piles	1/2"	10	10
Cap to Header	1/2"	10	10
Washer to Cap	1/2"	10	10
Washer to Header	1/2"	10	10
Washer to Stringer	1/2"	10	10
Washer to Cap	1/2"	10	10
Washer to Stringer	1/2"	10	10
Washer to Cap	1/2"	10	10
Washer to Stringer	1/2"	10	10
<b>TOTAL WEIGHT</b>			<b>150</b>

**BOLTS & WASHERS FOR ONE WING**

Cap to Piles	1/2"	10	10
Cap to Header	1/2"	10	10
Washer to Cap	1/2"	10	10
Washer to Header	1/2"	10	10
Washer to Stringer	1/2"	10	10
Washer to Cap	1/2"	10	10
Washer to Stringer	1/2"	10	10
Washer to Cap	1/2"	10	10
Washer to Stringer	1/2"	10	10
<b>TOTAL WEIGHT</b>			<b>150</b>

**SUMMARY FOR HARDWARE**

Spans	20 d Common	100	2000
Bents	100 d Common	100	10000
Abutments	40 d Common	100	4000
Wings	10 d Common	100	1000
<b>TOTAL WEIGHT</b>			<b>25000</b>

**ONE SPAN OF SUPERSTRUCTURE**

SHINGLED-TREATED TIMBER SHEET PILING	40	100	4000
RAIL DLOCKS	1	100	100
WALLES	1	100	100
CAP	1	100	100
TIMBER HEADER	1	100	100
BULKHEADS	1	100	100
STRINGER BLOKING	1	100	100
FLOORING	545	100	54500
DIRT STOPS	3	100	300
BOLLERS	4	100	400
<b>TOTAL TREATED TIMBER</b>			<b>1391</b>
<b>UNTREATED TIMBER</b>			<b>1391</b>
<b>TOTAL</b>			<b>2782</b>

**SUMMARY OF QUANTITIES**

SPANS	20	100	2000
BENTS	1	100	10000
ABUTMENTS	1	100	4000
WINGS	1	100	1000
<b>TOTAL</b>			<b>25000</b>

**ASPHALT PLANK WEARING SURFACE**

SPANS	20	100	2000
ABUTMENTS	1	100	10000
WINGS	1	100	1000
<b>TOTAL</b>			<b>25000</b>

**GENERAL NOTES**

All work shall be done in accordance with the Standard Specifications for the Colorado State Highway Department adopted Jan. 1, 1930.

Plan, Section and Detail drawings are subject to change without notice.

Structure is symmetrical about roadway.

**STRUCTURE REQUIRED**

SPANS @ 20' FT. TYPE OF ABUTMENT

LOADING DATA

LIVE LOAD SA.A.S.H.O. JULY 1927 CLASS 'B'

DEAD LOAD - Assume 50 lbs. per sq. ft.

**COLORADO STATE HIGHWAY DEPARTMENT**

**TIMBER TRESTLE WITH 6" LAMINATED FLOOR**

Across: **FACE BRIDGE**

Site: **STATE HIGHWAY 111**

Map: **SECTION 111**

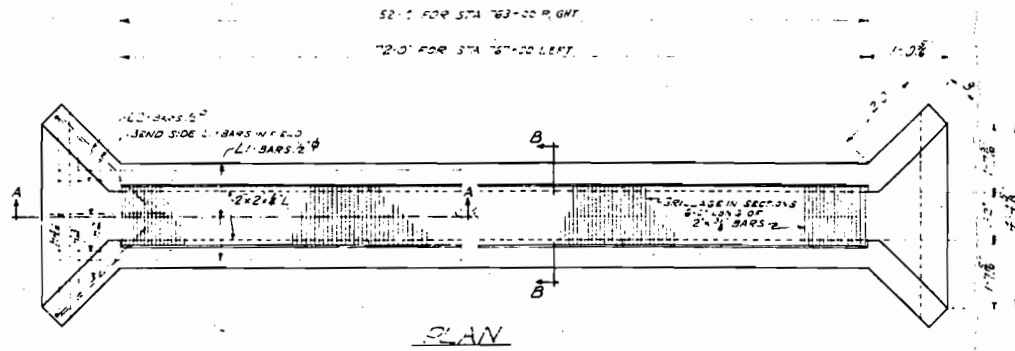
Designed by: **E.E. BAILEY**

Made by: **E.E. BAILEY**

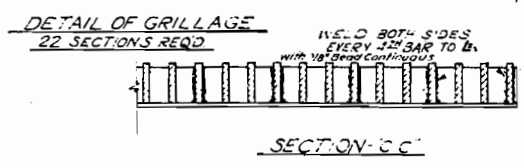
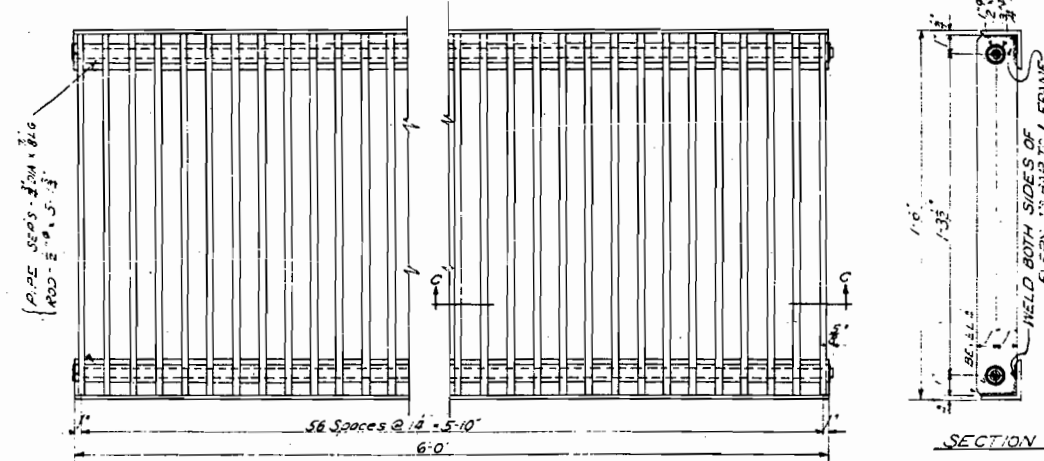
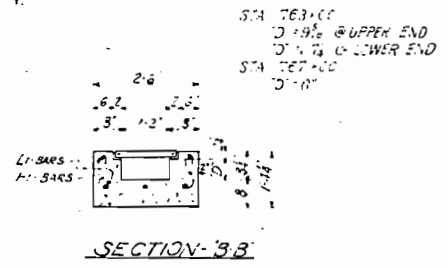
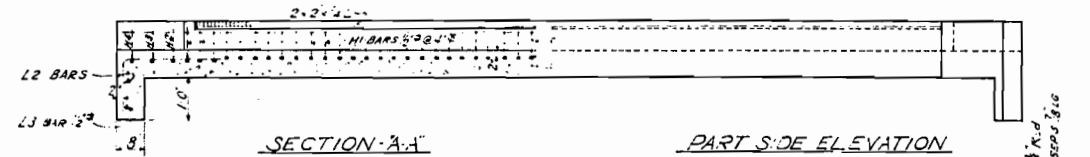
Checked by: **E.E. BAILEY**

Date: **May 23, 1927**

\*This includes 220 Lbs. of 30d. GALV. NAILS for ASPHALT PLANK.



STA 763+00				STA 767+00			
MARK	SIZE	NO.	LENGTH	MARK	SIZE	NO.	LENGTH
L1	2"	2	5.0'	L1	2"	2	5.0'
L2	2"	1	4.3'	L2	2"	1	4.3'
L3	2"	1	4.3'	L3	2"	1	4.3'
L4	2"	1	4.3'	L4	2"	1	4.3'
L5	2"	1	4.3'	L5	2"	1	4.3'
L6	2"	1	4.3'	L6	2"	1	4.3'
L7	2"	1	4.3'	L7	2"	1	4.3'
L8	2"	1	4.3'	L8	2"	1	4.3'
L9	2"	1	4.3'	L9	2"	1	4.3'
L10	2"	1	4.3'	L10	2"	1	4.3'
L11	2"	1	4.3'	L11	2"	1	4.3'
L12	2"	1	4.3'	L12	2"	1	4.3'
L13	2"	1	4.3'	L13	2"	1	4.3'
L14	2"	1	4.3'	L14	2"	1	4.3'
L15	2"	1	4.3'	L15	2"	1	4.3'
L16	2"	1	4.3'	L16	2"	1	4.3'
L17	2"	1	4.3'	L17	2"	1	4.3'
L18	2"	1	4.3'	L18	2"	1	4.3'
L19	2"	1	4.3'	L19	2"	1	4.3'
L20	2"	1	4.3'	L20	2"	1	4.3'
L21	2"	1	4.3'	L21	2"	1	4.3'
L22	2"	1	4.3'	L22	2"	1	4.3'
L23	2"	1	4.3'	L23	2"	1	4.3'
L24	2"	1	4.3'	L24	2"	1	4.3'
L25	2"	1	4.3'	L25	2"	1	4.3'
L26	2"	1	4.3'	L26	2"	1	4.3'
L27	2"	1	4.3'	L27	2"	1	4.3'
L28	2"	1	4.3'	L28	2"	1	4.3'
L29	2"	1	4.3'	L29	2"	1	4.3'
L30	2"	1	4.3'	L30	2"	1	4.3'
L31	2"	1	4.3'	L31	2"	1	4.3'
L32	2"	1	4.3'	L32	2"	1	4.3'
L33	2"	1	4.3'	L33	2"	1	4.3'
L34	2"	1	4.3'	L34	2"	1	4.3'
L35	2"	1	4.3'	L35	2"	1	4.3'
L36	2"	1	4.3'	L36	2"	1	4.3'
L37	2"	1	4.3'	L37	2"	1	4.3'
L38	2"	1	4.3'	L38	2"	1	4.3'
L39	2"	1	4.3'	L39	2"	1	4.3'
L40	2"	1	4.3'	L40	2"	1	4.3'
L41	2"	1	4.3'	L41	2"	1	4.3'
L42	2"	1	4.3'	L42	2"	1	4.3'
L43	2"	1	4.3'	L43	2"	1	4.3'
L44	2"	1	4.3'	L44	2"	1	4.3'
L45	2"	1	4.3'	L45	2"	1	4.3'
L46	2"	1	4.3'	L46	2"	1	4.3'
L47	2"	1	4.3'	L47	2"	1	4.3'
L48	2"	1	4.3'	L48	2"	1	4.3'
L49	2"	1	4.3'	L49	2"	1	4.3'
L50	2"	1	4.3'	L50	2"	1	4.3'
L51	2"	1	4.3'	L51	2"	1	4.3'
L52	2"	1	4.3'	L52	2"	1	4.3'
L53	2"	1	4.3'	L53	2"	1	4.3'
L54	2"	1	4.3'	L54	2"	1	4.3'
L55	2"	1	4.3'	L55	2"	1	4.3'
L56	2"	1	4.3'	L56	2"	1	4.3'
L57	2"	1	4.3'	L57	2"	1	4.3'
L58	2"	1	4.3'	L58	2"	1	4.3'
L59	2"	1	4.3'	L59	2"	1	4.3'
L60	2"	1	4.3'	L60	2"	1	4.3'
L61	2"	1	4.3'	L61	2"	1	4.3'
L62	2"	1	4.3'	L62	2"	1	4.3'
L63	2"	1	4.3'	L63	2"	1	4.3'
L64	2"	1	4.3'	L64	2"	1	4.3'
L65	2"	1	4.3'	L65	2"	1	4.3'
L66	2"	1	4.3'	L66	2"	1	4.3'
L67	2"	1	4.3'	L67	2"	1	4.3'
L68	2"	1	4.3'	L68	2"	1	4.3'
L69	2"	1	4.3'	L69	2"	1	4.3'
L70	2"	1	4.3'	L70	2"	1	4.3'
L71	2"	1	4.3'	L71	2"	1	4.3'
L72	2"	1	4.3'	L72	2"	1	4.3'
L73	2"	1	4.3'	L73	2"	1	4.3'
L74	2"	1	4.3'	L74	2"	1	4.3'
L75	2"	1	4.3'	L75	2"	1	4.3'
L76	2"	1	4.3'	L76	2"	1	4.3'
L77	2"	1	4.3'	L77	2"	1	4.3'
L78	2"	1	4.3'	L78	2"	1	4.3'
L79	2"	1	4.3'	L79	2"	1	4.3'
L80	2"	1	4.3'	L80	2"	1	4.3'
L81	2"	1	4.3'	L81	2"	1	4.3'
L82	2"	1	4.3'	L82	2"	1	4.3'
L83	2"	1	4.3'	L83	2"	1	4.3'
L84	2"	1	4.3'	L84	2"	1	4.3'
L85	2"	1	4.3'	L85	2"	1	4.3'
L86	2"	1	4.3'	L86	2"	1	4.3'
L87	2"	1	4.3'	L87	2"	1	4.3'
L88	2"	1	4.3'	L88	2"	1	4.3'
L89	2"	1	4.3'	L89	2"	1	4.3'
L90	2"	1	4.3'	L90	2"	1	4.3'
L91	2"	1	4.3'	L91	2"	1	4.3'
L92	2"	1	4.3'	L92	2"	1	4.3'
L93	2"	1	4.3'	L93	2"	1	4.3'
L94	2"	1	4.3'	L94	2"	1	4.3'
L95	2"	1	4.3'	L95	2"	1	4.3'
L96	2"	1	4.3'	L96	2"	1	4.3'
L97	2"	1	4.3'	L97	2"	1	4.3'
L98	2"	1	4.3'	L98	2"	1	4.3'
L99	2"	1	4.3'	L99	2"	1	4.3'
L100	2"	1	4.3'	L100	2"	1	4.3'



NO.	UNIT	DESCRIPTION	STATION 763+00	STATION 767+00	TOTAL
146	CUYD	DRY COMMON EXCAVATION	33	25	283
46a	CUYD	CLASS 'A' CONCRETE	7.7	7.5	14.9
47	LBS	REINFORCING STEEL	1090	1300	2390
48	LBS	STRUCTURAL STEEL	2680	3216	5896
149	CUYD	DRY ROCK EXCAVATION	87		87

**GENERAL NOTES**

ALL WORK SHALL BE DONE ACCORDING TO THE STANDARD SPECIFICATIONS OF THE COLORADO STATE HIGHWAY DEPARTMENT.

ALL CONCRETE SHALL BE CLASS 'A'.

ALL EXPOSED SURFACES SHALL BE FINISHED FREE OF FORM MARKS.

ALL EXPOSED CORNERS, EXCEPT ON HANDRAILS, SHALL BE BEVELLED TO A 3\"/>

**LOADING DATA**

LIVE LOAD - 800<sup>LB</sup> PER LINEAL INCH OF CULVERT.

NO DISTRIBUTION IN DIRECTION OF SPAN.

NO IMPACT.

**COLORADO STATE HIGHWAY DEPARTMENT**

**14'x6' SPECIAL CONCRETE BOX CULVERT.**

Across STREET  
Sta. 763+00 - 767+00

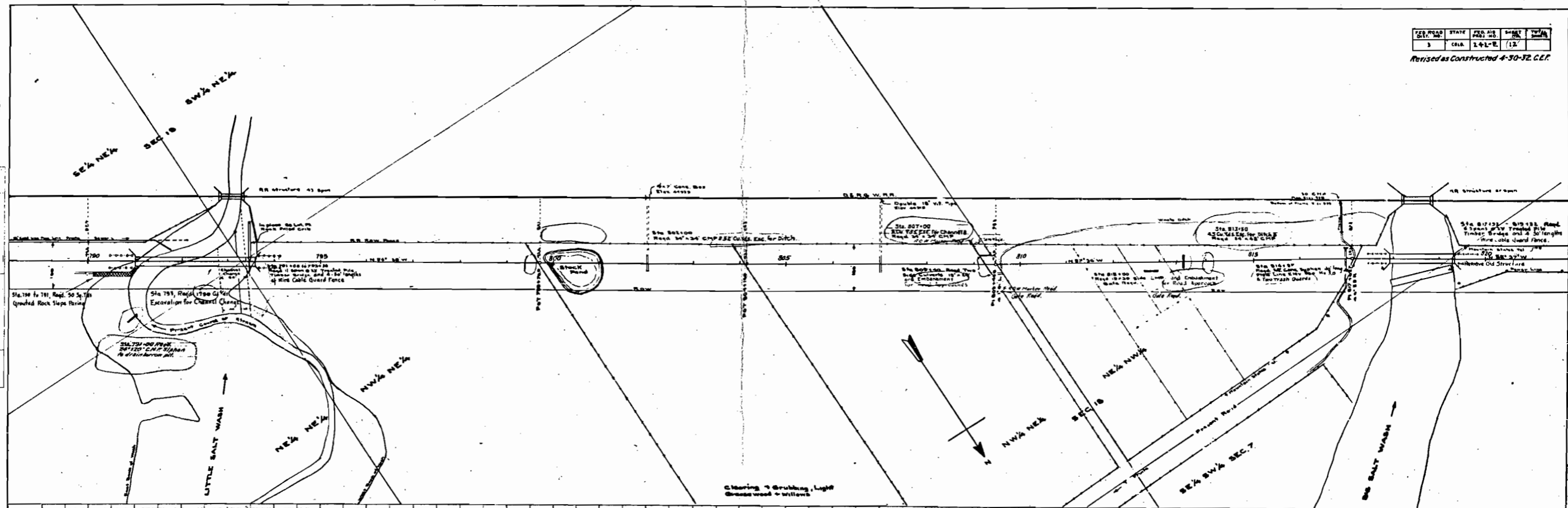
Near FRUITA Sec. 18 T. 19 N. R. 20 W. UTAH

Designed by E.F.W. Approved by H.M. Bailey  
Made by W.A.M. Bridge Engineer  
Checked by G.S.S. Date: March 25, 1931

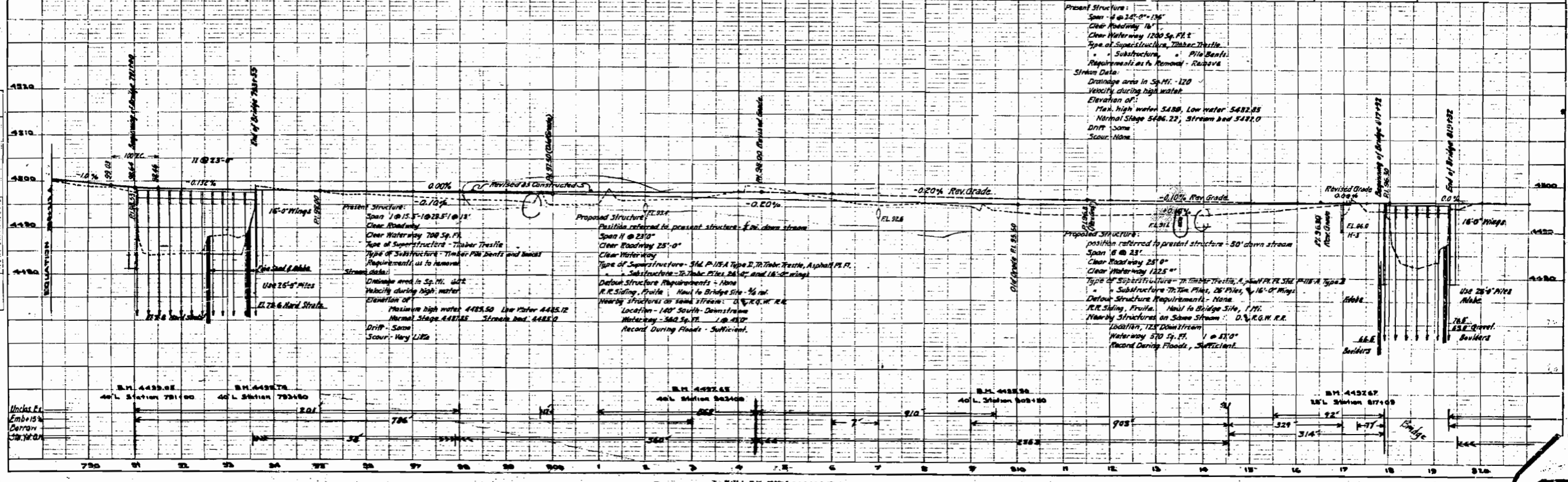




PLAN  
 TITLE: BRIDGE OVER R.R. TRACKS AT STATION 781+00 TO 817+00  
 DATE: FEB 1933  
 DRAWN BY: [Name]  
 CHECKED BY: [Name]



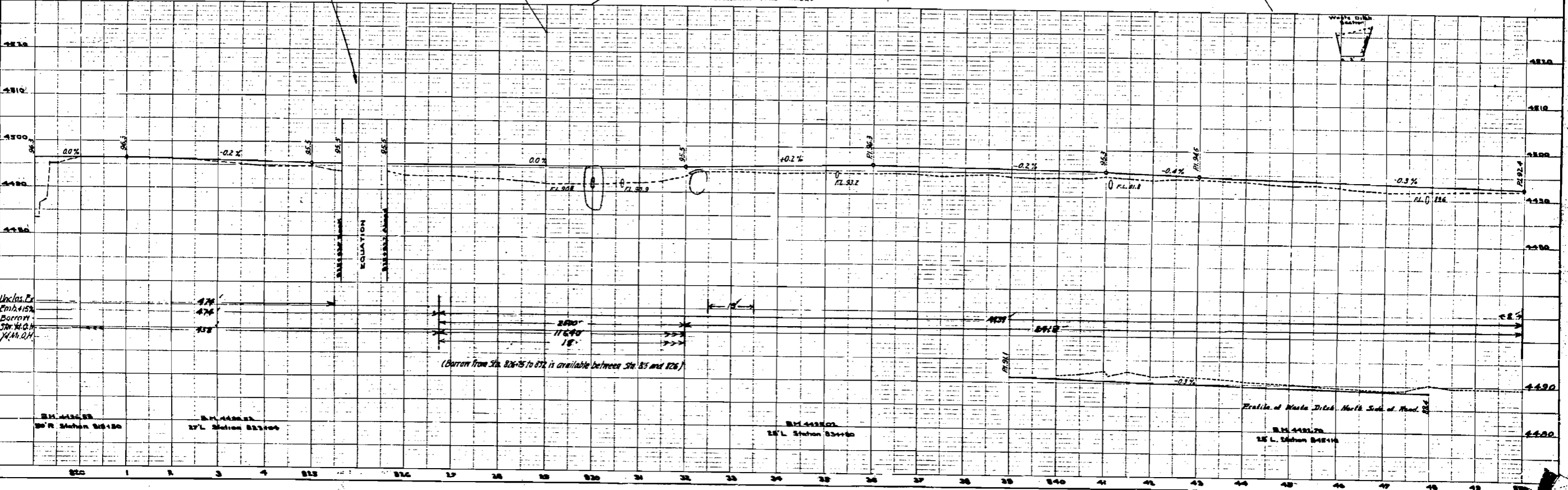
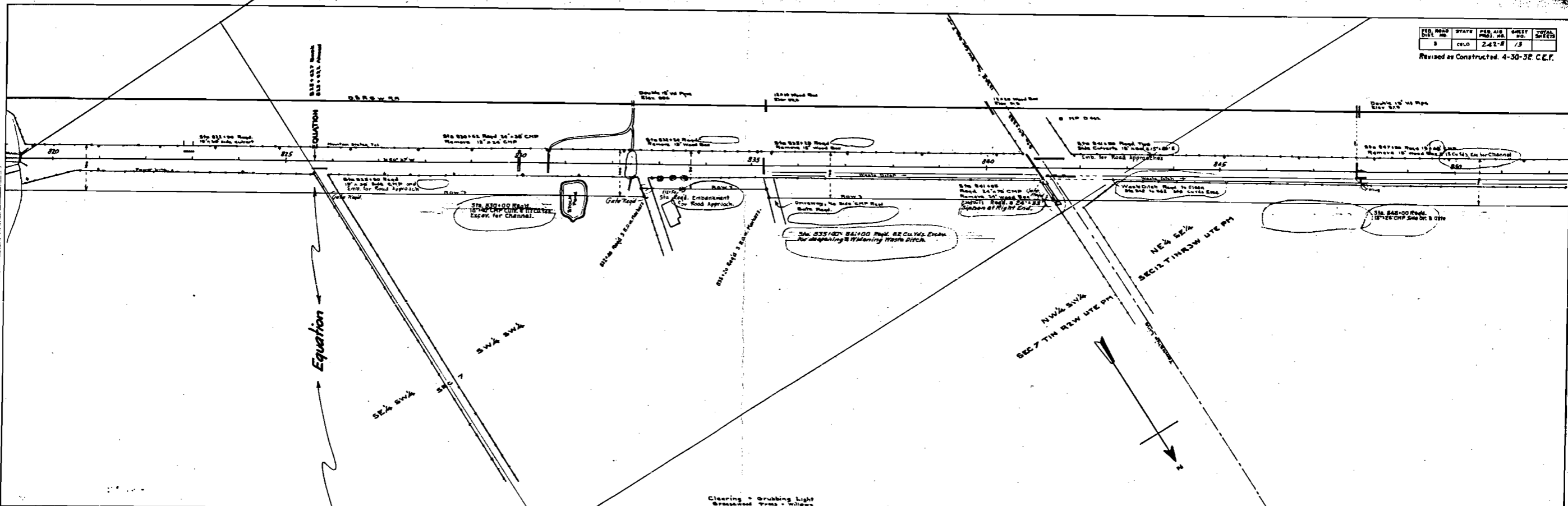
PROFILE  
 TITLE: BRIDGE OVER R.R. TRACKS AT STATION 781+00 TO 817+00  
 DATE: FEB 1933  
 DRAWN BY: [Name]  
 CHECKED BY: [Name]





PLAN  
 E.H. PUGH  
 ENGINEER  
 1531  
 IND. P.E.

PROFILE  
 E.H. PUGH  
 ENGINEER  
 1531  
 IND. P.E.



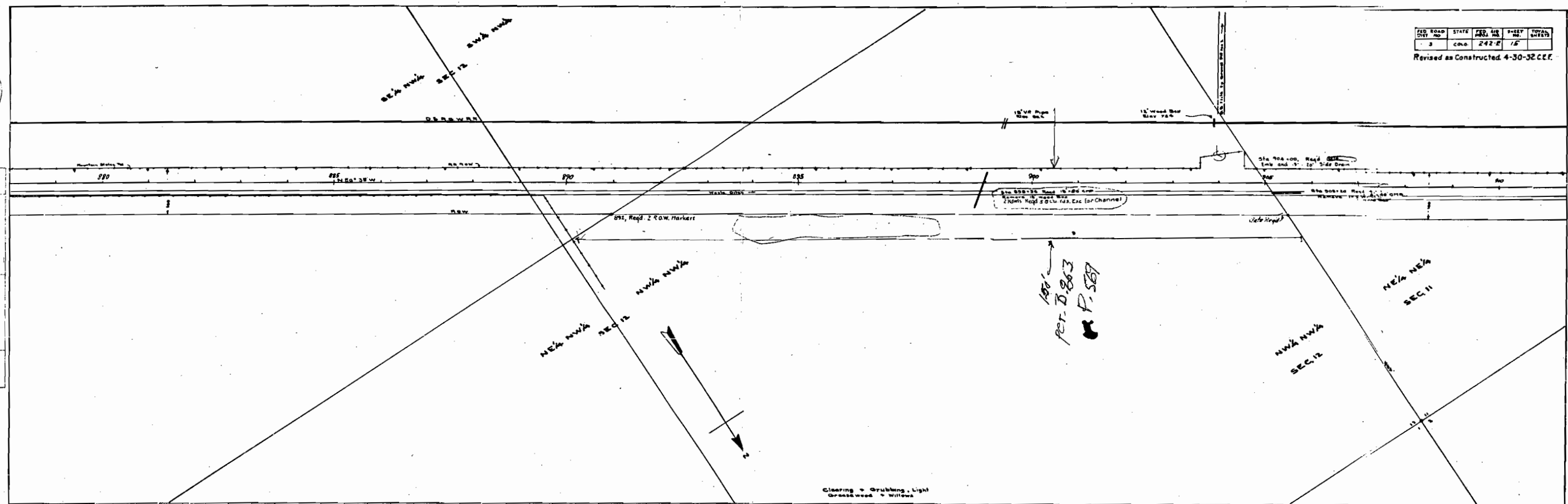


RD NO.	STATE	SEC. 16	SHEET	TOTAL SHEETS
3	COLO.	242-E	15	

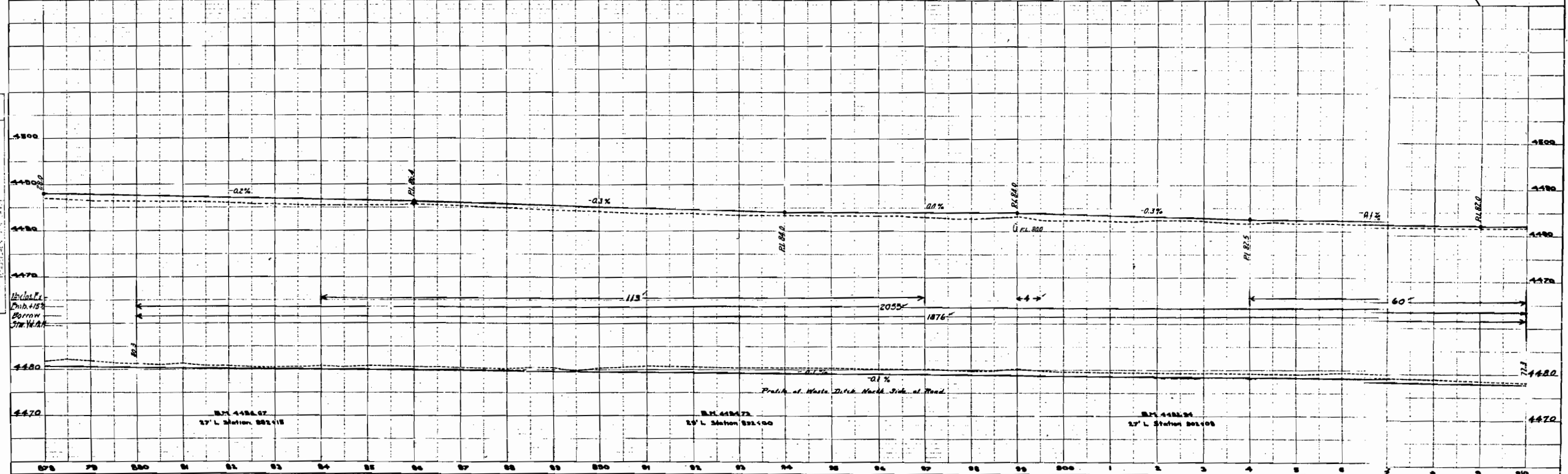
Revised as Constructed 4-30-32 C.E.F.



PLAN  
 1/4" = 100'  
 1/8" = 100'



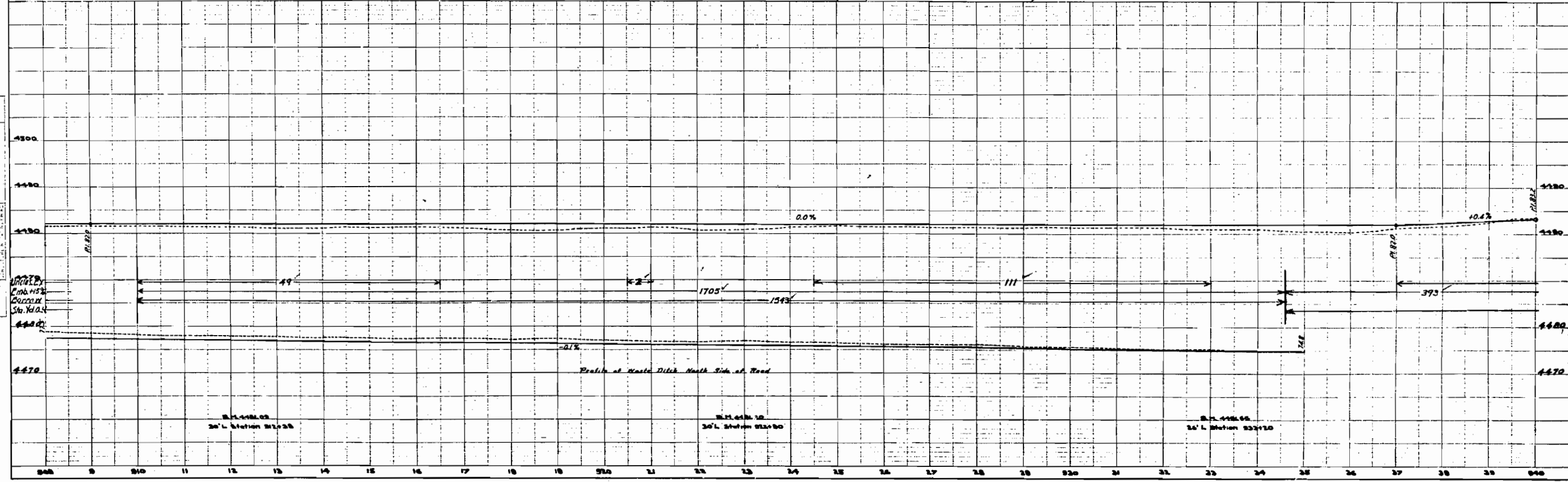
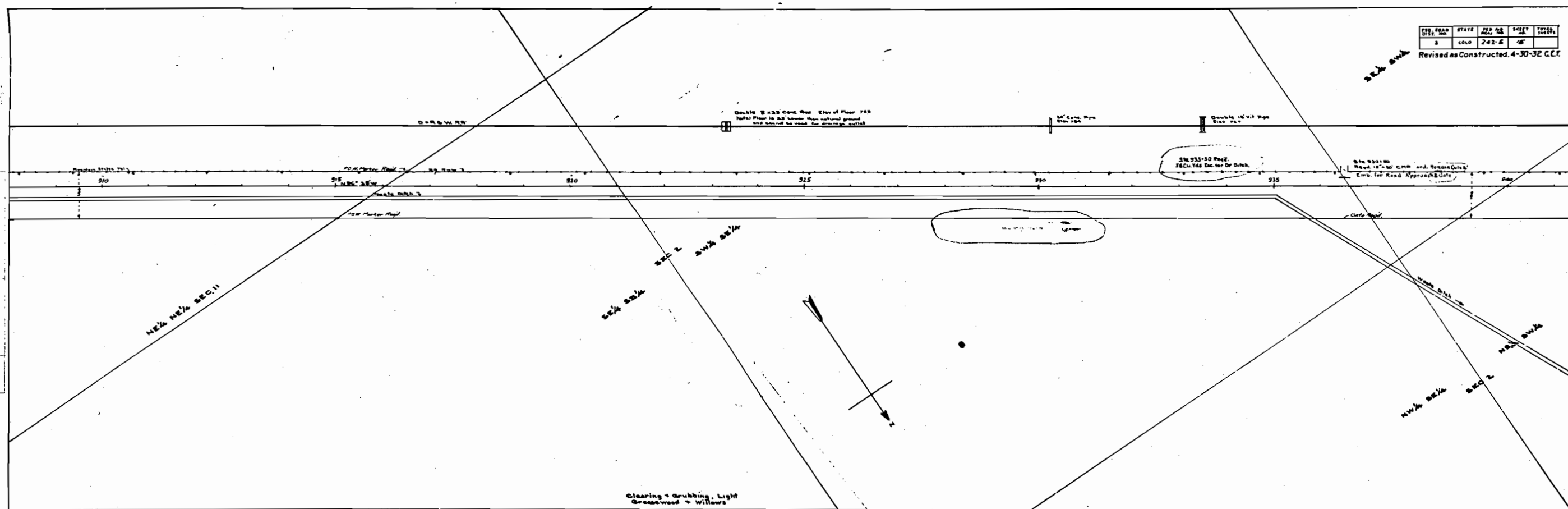
PROFILE  
 1/4" = 100'  
 1/8" = 100'



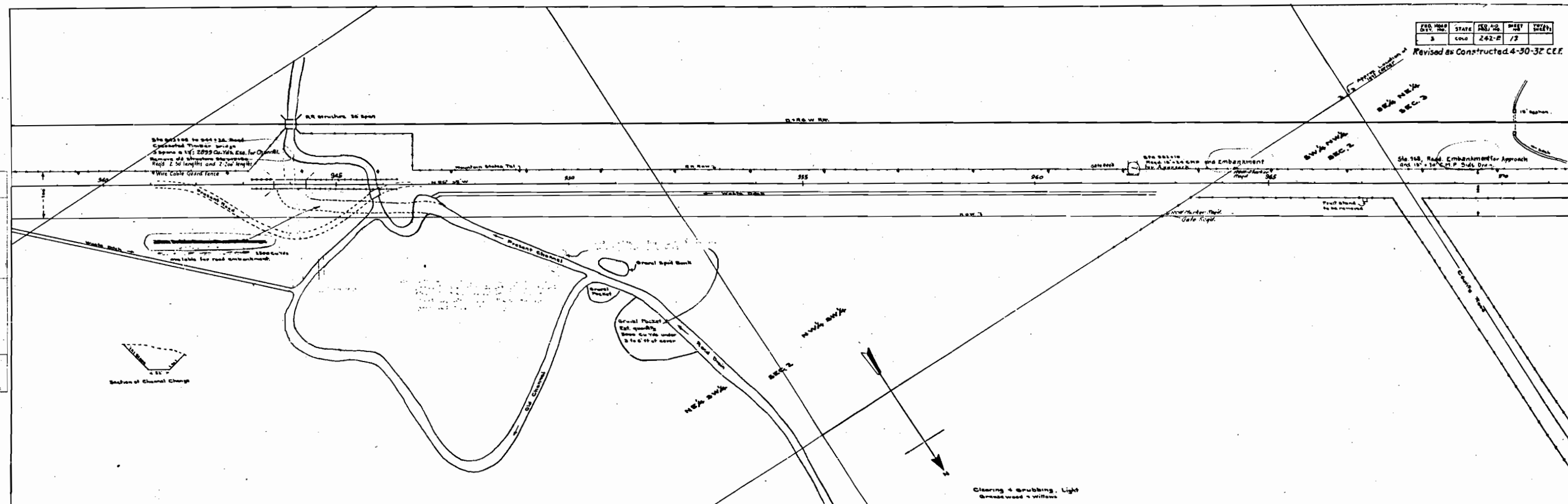


CITY, ROAD DIST. NO.	STATE	SEC. 35	SH. 24	SHEET NO.	TOTAL SHEETS
3	COLO.	242-E	48		

Revised as Constructed, 4-30-32 C.C.F.

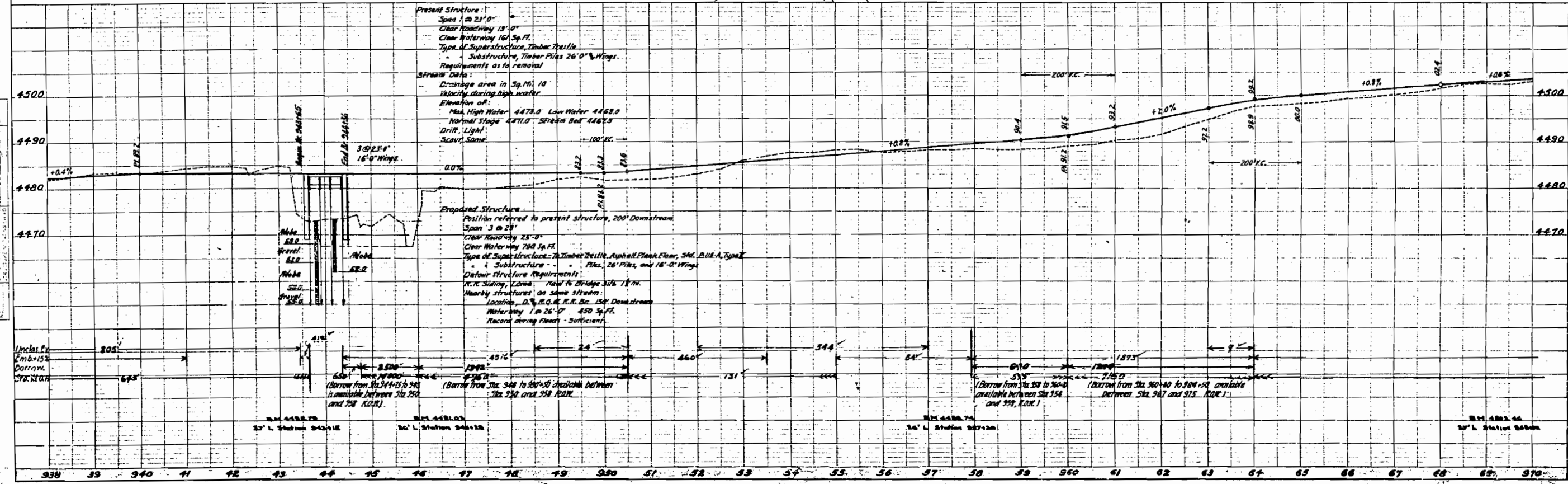


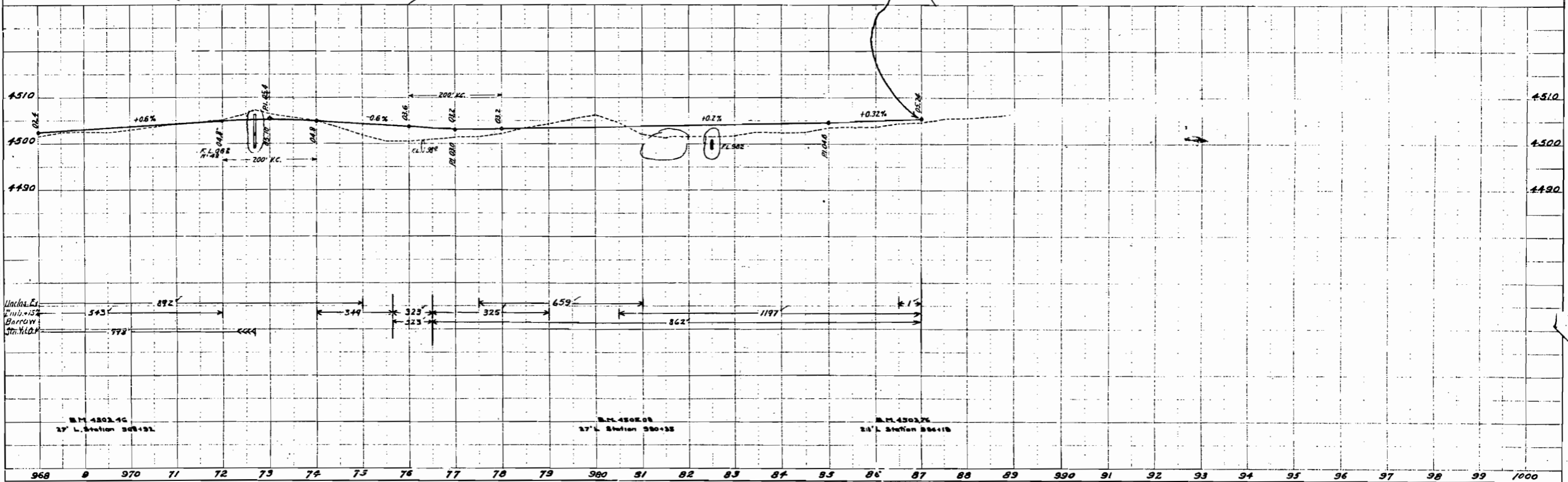
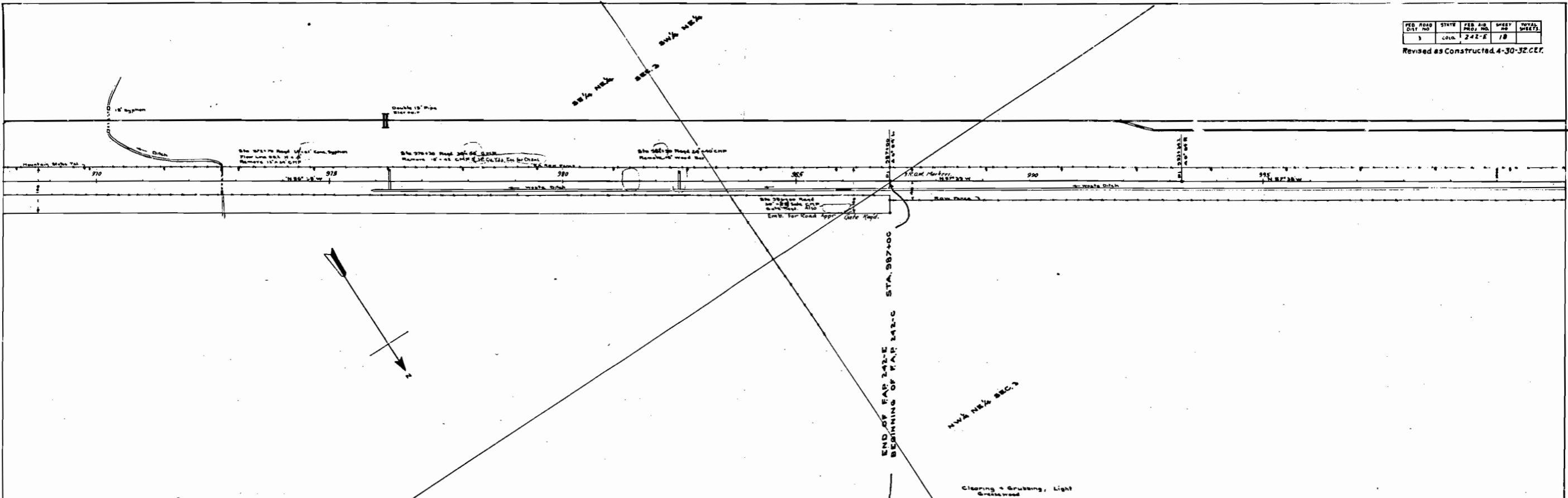
FED 1931  
E. R. A.



PLAN  
SCALE: AS SHOWN  
DATE: 7/3/37

PROFILE  
SCALE: AS SHOWN  
DATE: 7/3/37





PLAN

PROFILE