

FED. ROAD DIST. NO.	STATE	FED. AID PROJ. NO.	SHEET NO.	TOTAL SHEETS
3	COLO.	258-H	1	1

REV. 3/15/55
 * 5/15/55 B.E.L.
 * 6/15/55 B.E.L.

Blue Mesa
 East

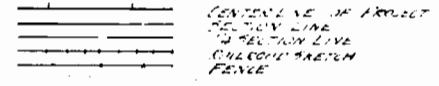
COLORADO STATE HIGHWAY DEPARTMENT

PLAN AND PROFILE OF PROPOSED FEDERAL AID PROJECT NO. 258-H STATE HIGHWAY NO. 6 GUNNISON CO.

INDEX OF SHEETS

- 1 TITLE SHEET
- 2 TYPICAL DESIGN & SUMMARY OF QUANTITIES
- 3 FLUME DETAILS
- 4 STANCHION DETAILS M-102C
- 5 " PROJECT MEYER & SHIBBED WIRE FENCE M-24C
- 6 " GUARD FENCE M-20D
- 7 " PICKET SNOW FENCE M-25A
- 8 " 12" BOX CULVERTS (M-101B SPECIAL)
- 9-163 PLAN & PROFILE
- 17-57 CROSS SECTIONS

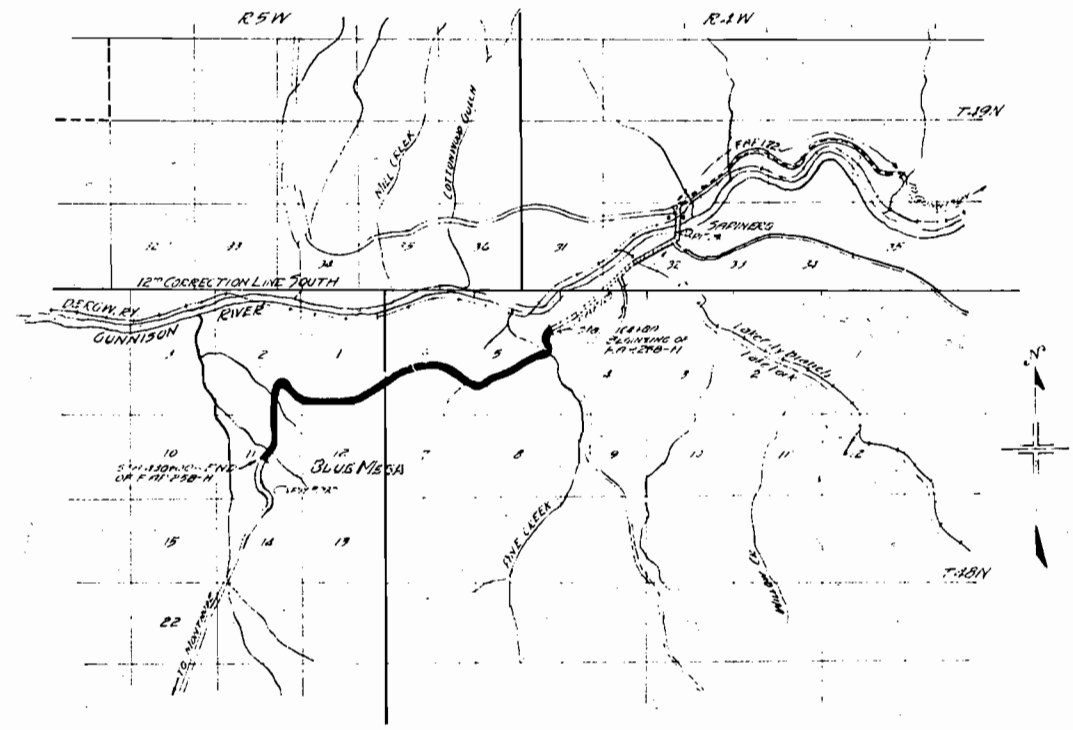
CONVENTIONAL SIGNS



SCALES

ON PLAN. 1 IN. = 100 FT.
 ON PROFILE { 1 IN. = 100 FT. HORIZONTAL
 1 IN. = 10 FT. VERTICAL

GRADE LINE ON PROFILE IS SHOWN AS GRADE OF FINISHED ROAD
 GROSS LENGTH OF PROJECT } 25,984.7 FT. 4.921 MI.
 NET LENGTH OF PROJECT



SCALE = 1/10" = 100'

RECOMMENDED FOR APPROVAL 7/20/28
J. J. Maloney
 ASSISTANT ENGINEER

APPROVED
J. W. Blumenthal
 STATE HIGHWAY ENGINEER

RECOMMENDED FOR APPROVAL

 DIST. ENG. BUREAU PUBLIC ROADS

RECOMMENDED FOR APPROVAL

 CHIEF ENG. BUREAU PUBLIC ROADS

APPROVED

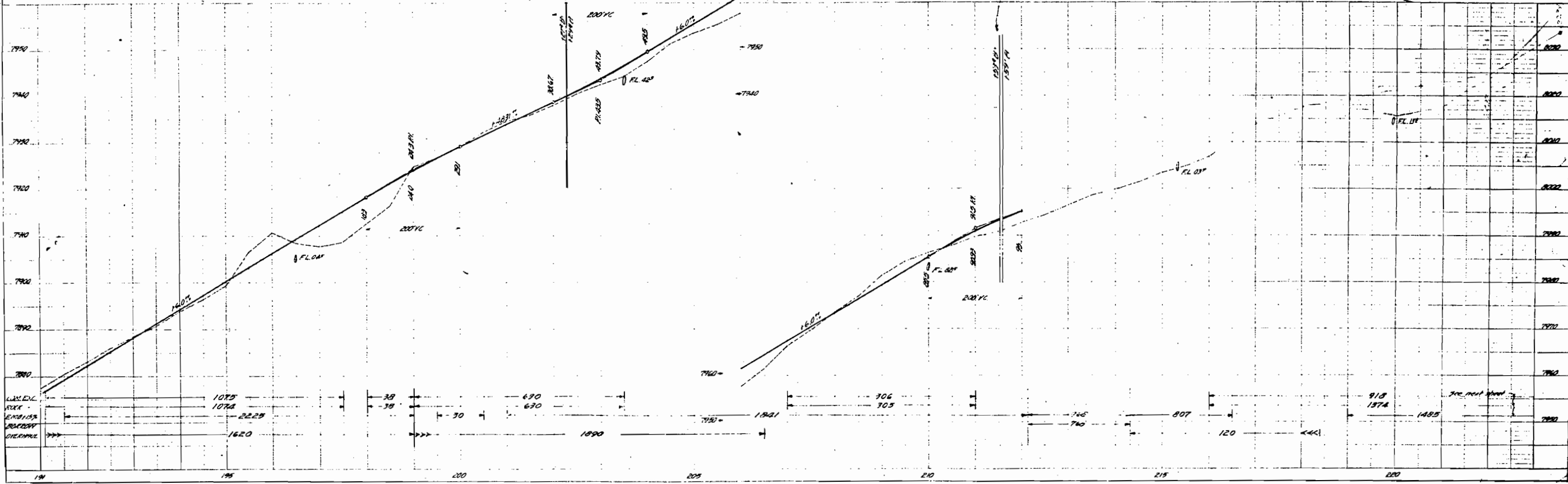
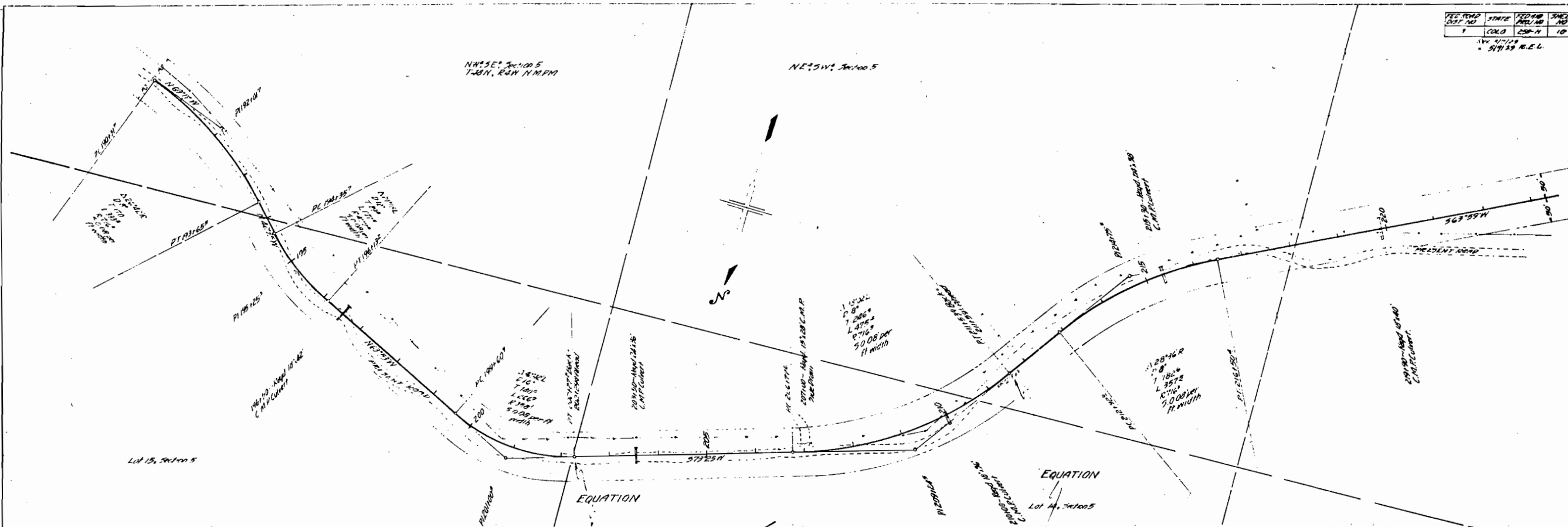
 DIRECTOR BUREAU PUBLIC ROADS

PL. STATE	FED. STATE	SHEET NO.	TOTAL SHEETS
1	10	10	10

NW 1/4 Sec 10
 S1/4 R.E.L.

NW 1/4 Sec 10 S
T-28N, R-2W N.M.P.M.

NE 1/4 Sec 10 S



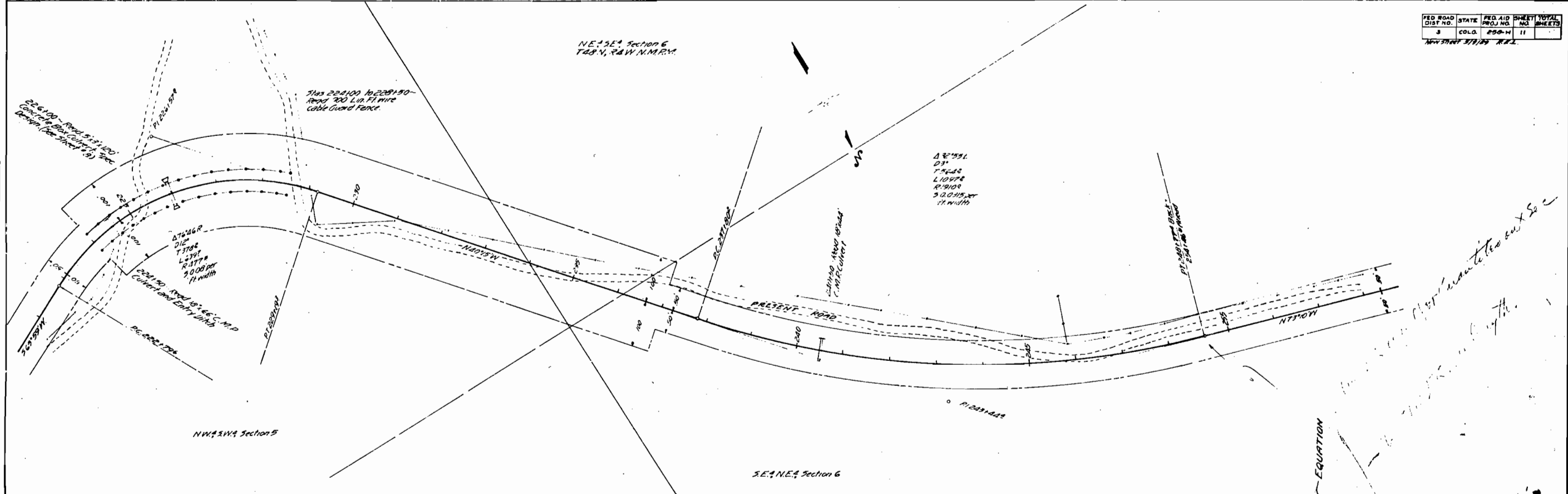
SCALE
 1" = 100'
 1" = 100'
 1" = 100'

SCALE
 1" = 100'
 1" = 100'

FED. ROAD DIST. NO.	STATE	FED. AID PROJ. NO.	SHEET NO.	TOTAL SHEETS
3	COLO.	290-M	11	

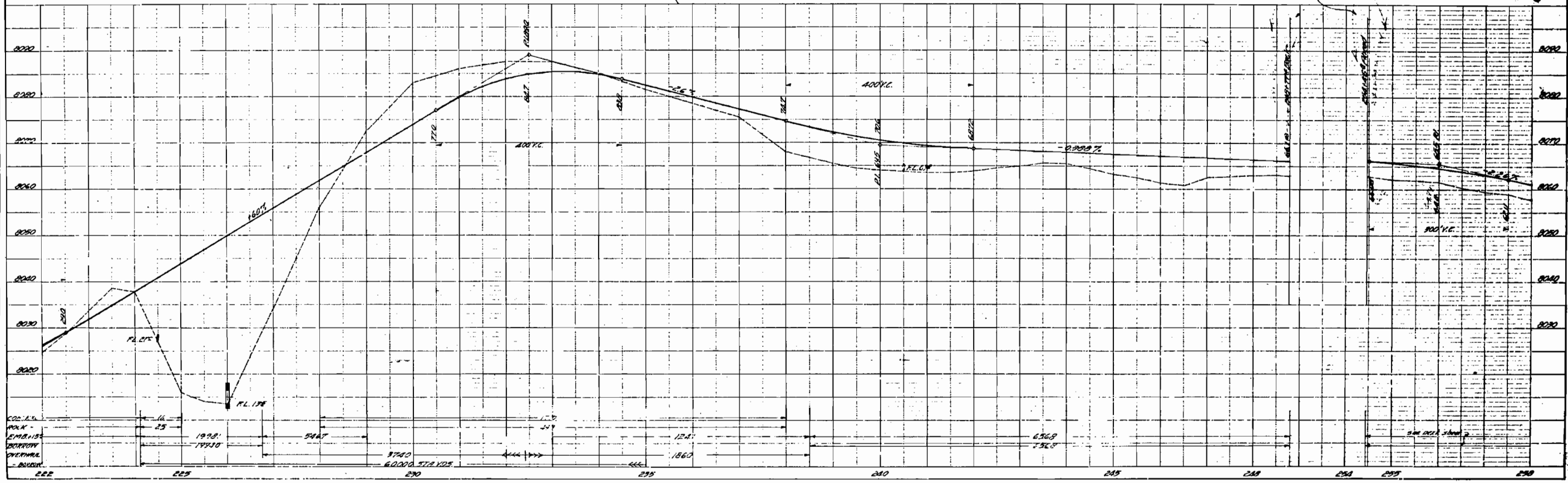
Nov 30 1929 R.E.L.

NE 1/4 Section 6
T48N, R4W, N.M.P.M.



DATE	BY	REVISION

DATE	BY	REVISION

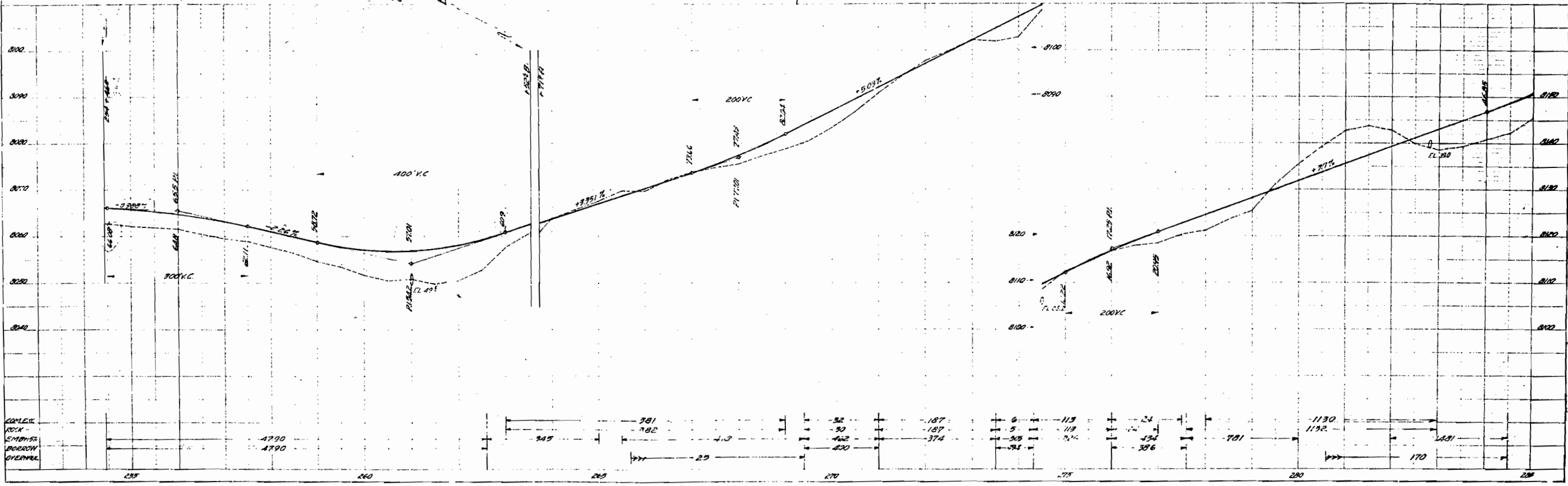
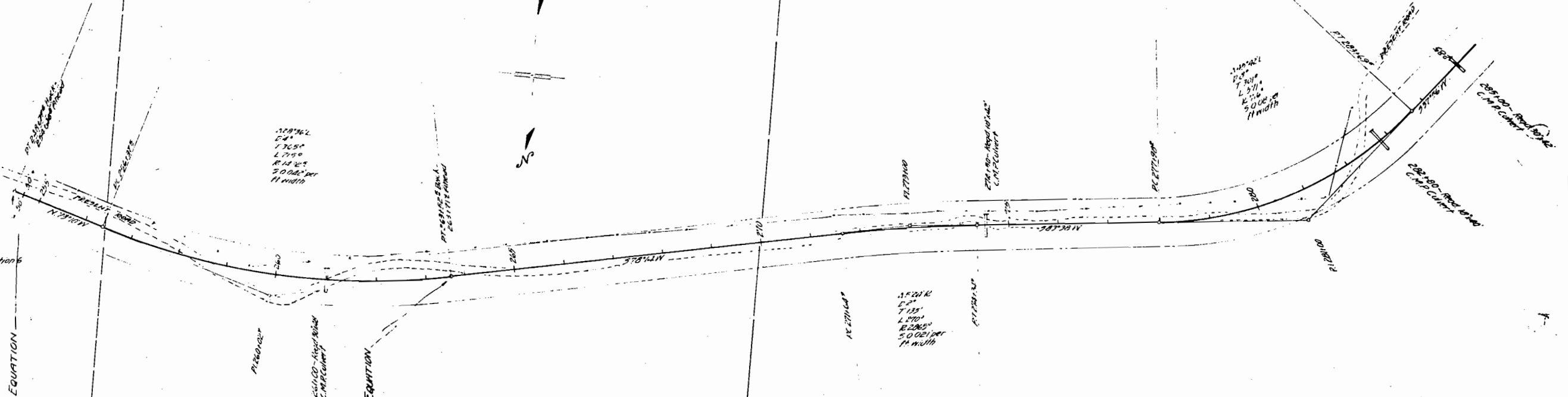


FED. DIST. NO.	STATE	FED. PROJ. NO.	SHEET NO.	TOTAL SHEETS
3	OKLA.	298-N	12	

DATE: 1/12/24
BY: RAL

LOT 15, SECTION 6
T48N, R.44W, N.M.P.M.

LOT 4, T48N



PLAN
SCALE: 1" = 40'

PROFILE
SCALE: 1" = 10'

QUALITY
CHECK
EMPLOYER
BORROW
OVERLAY

PL. NO.	STATE	PL. NO.	PL. NO.	PL. NO.
0	000	000	000	000

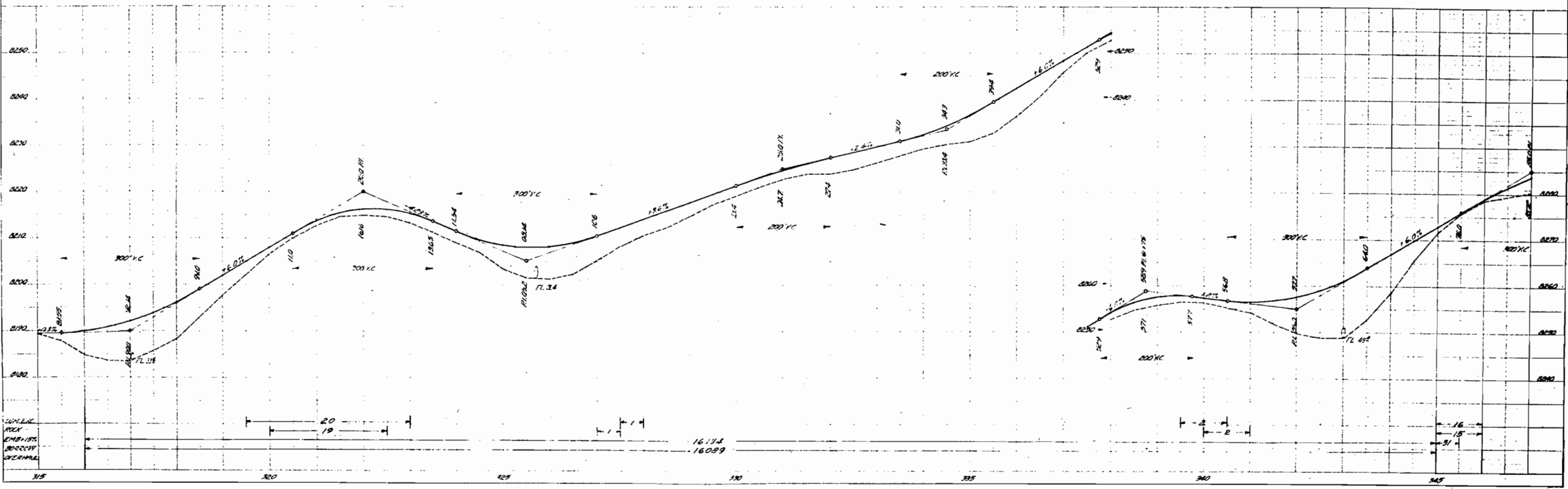
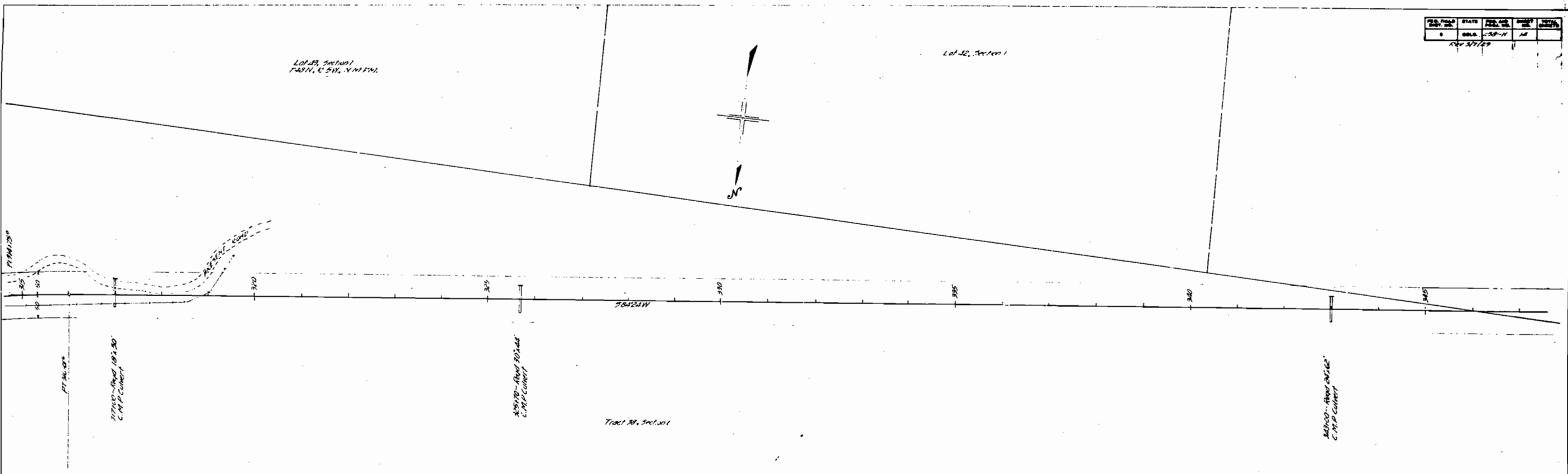
REV 3/7/53

Lot 28, Section 1
1/43 N. 1/4 W. 1/4 E. 1/4

Lot 22, Section 1



PLAN
SCALE
1" = 100'



COMPILED
BY
EMB+ISS
REVISION
DATE

20
19

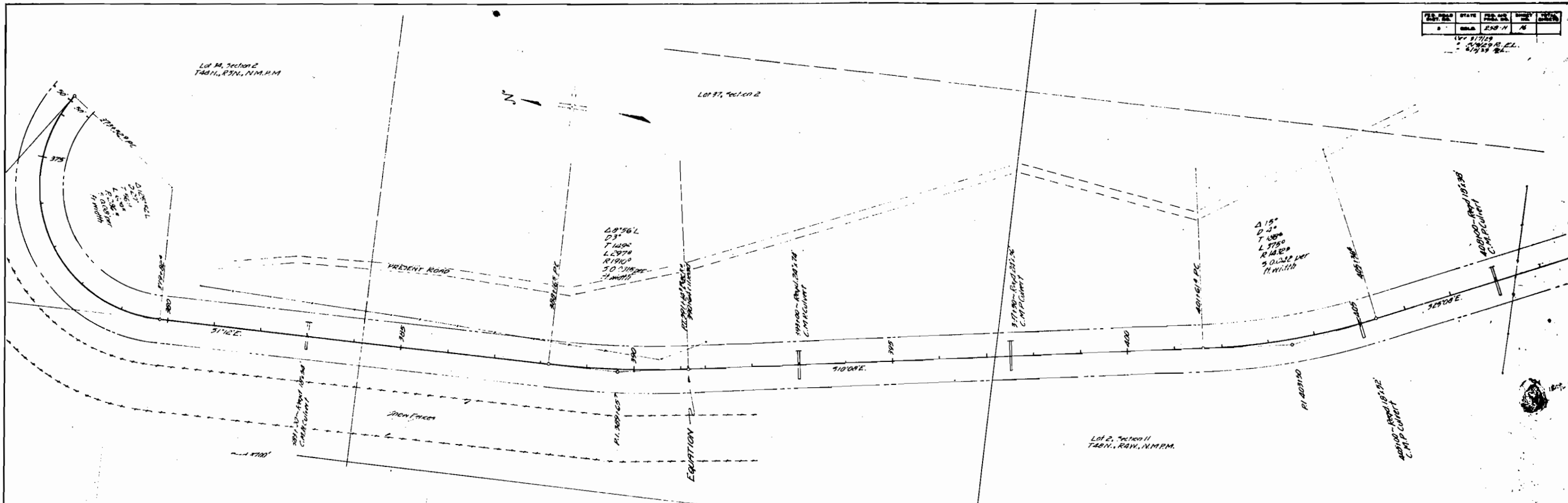
16.134
16.089

16
15
14

DATE	BY	CHKD	DATE

DATE	BY	CHKD	DATE

DATE	BY	CHKD	DATE



$T = 561 \frac{1}{2}$
 $R = 286 \frac{5}{8}$
 $\Delta 125^\circ 54' L$

