

FED. ROAD DIST. NO.	STATE	FED. AID PROJ. NO.	SHEET NO.	TOTAL SHEETS
3	COLO.	259-F(1)	1	

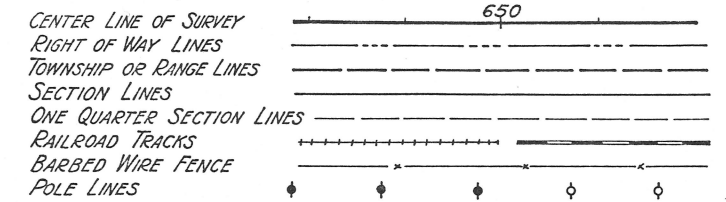
# COLORADO STATE HIGHWAY DEPARTMENT

## PLAN AND PROFILE OF PROPOSED FEDERAL AID PROJECT NO. 259-F (1) STATE HIGHWAY NO. 6 CHAFFEE COUNTY

### INDEX OF SHEETS

SHEET NO. 1	SKETCH MAP AND TITLE SHEET	
2	TYPICAL CROSS SECTION	
3	SUMMARY OF APPROXIMATE QUANTITIES	
4	FENCING REQUIREMENTS AND DETAILS OF DIVISION BOX AND FLUME	
5	DETAILS OF TIMBER CHUTES	
6-8	TABULATION OF STRUCTURES	
9	STANDARD HEADWALLS FOR C.M.P. CULVERTS	M102 E
10	STANDARD CONCRETE BOX CULVERTS	M103 D
11	STANDARD MANHOLES, INLETS AND PIPE JOINTS ON SEWERS	M12 B
12	STANDARD TIMBER GUARD POSTS	M19 A
13	STANDARD WIRE FENCES WITH STEEL POSTS AND MARKER POSTS	M27 A
14	STANDARD CHAIN LINK WIRE MESH (SCHOOL) FENCE	M26 A
15	STANDARD METHODS FOR SUPERELEVATION AND WIDENING OF CURVES	M1 B
16	TYPICAL SIDE APPROACH ROADS - ROADWAY CONSTRUCTION TRAFFIC SIGNS	M2 B
17 TO 30	ALIGNMENT PLAN AND PROFILE	
31 TO 61	CROSS SECTIONS	

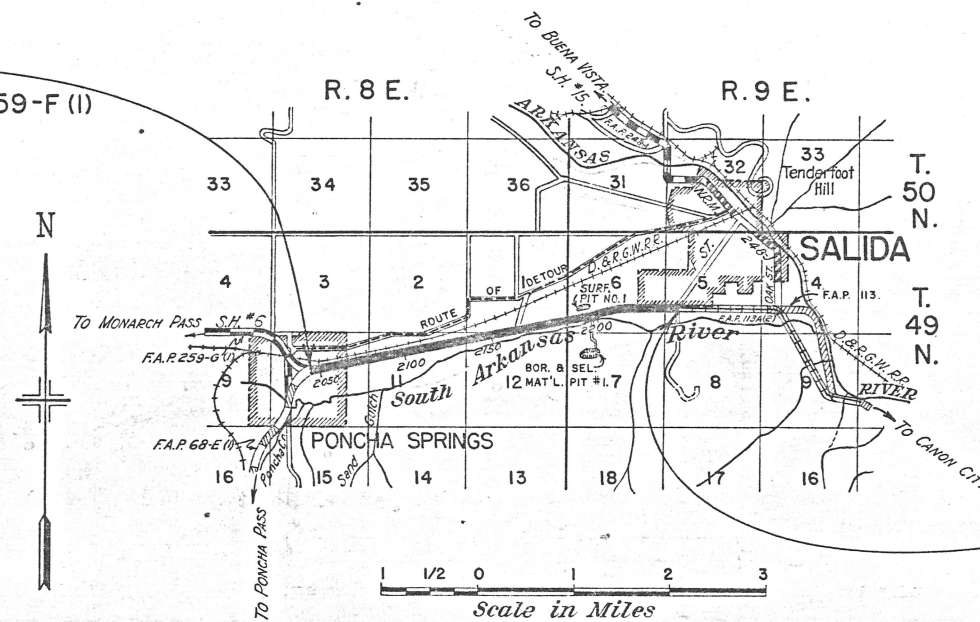
### CONVENTIONAL SIGNS



### SCALES OF ORIGINAL TRACINGS

ON PLAN, 1 IN. = 50 FT.  
ON PROFILE } 1 IN. = 50 FT. HORIZONTAL  
                  } 1 IN. = 10 FT. VERTICAL  
GRADE LINE ON PROFILE IS SHOWN AS GRADE OF FINISHED ROAD  
GROSS LENGTH OF PROJECT } 20,198.55 FEET = 3.825 MILES  
NET LENGTH OF PROJECT }

STA. 2042 + 53.0  
BEGINNING OF F.A.P. 259-F (1)



STA. 2249 + 12.0  
END OF F.A.P. 259-F (1)  
BEGINNING OF F.A.P. 113-A (2)

### NOTE

It is recommended that the bidders on this Project go over the plan details with one of the following field representatives of this department.

W.A. Whitney      Division Engineer      Salida  
F.W. McAllister      Resident Engineer      Salida

RECOMMENDED FOR APPROVAL

*J. Maloney*  
ASSISTANT ENGINEER

APPROVED  
*Charles J. Fair*  
STATE HIGHWAY ENGINEER

RECOMMENDED FOR APPROVAL

DIST. ENG. BUREAU PUBLIC ROADS

RECOMMENDED FOR APPROVAL

CHIEF ENG. BUREAU PUBLIC ROADS

APPROVED

DIRECTOR BUREAU PUBLIC ROADS

N.W. 1/4 SEC. 10  
T 49 N, R. 8 E.

FED. ROAD DIST. NO.	STATE	FED. AID PROJ. NO.	SHEET NO.	TOTAL SHEETS
3	COLO.	259-F (1)	17	

NOTES:  
Alignment and grade shown on these plans are subject to change during construction, after approval by the Denver Office of the Department.

All pole lines encroaching on construction are to be moved by owners.

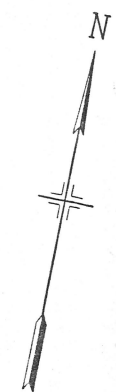
All suitable material excavated from culverts and ditches, and not used for ditch embankment is to be used in the roadway embankment.

Right of Way Markers are tabulated on Sheet No. 6.

Fencing	is	"	"	"	3 & 4.
Mail boxes to be reset are	"	"	"	"	7.
Signs to be moved	"	"	"	"	7.
Stop Boxes & Valves to be reset are	"	"	"	"	7.

$\Delta = 79^\circ 12' L.$   
 $D = 6'$   
 $T = 790.0'$   
 $L = 1320.0'$   
 $R = 955.0'$

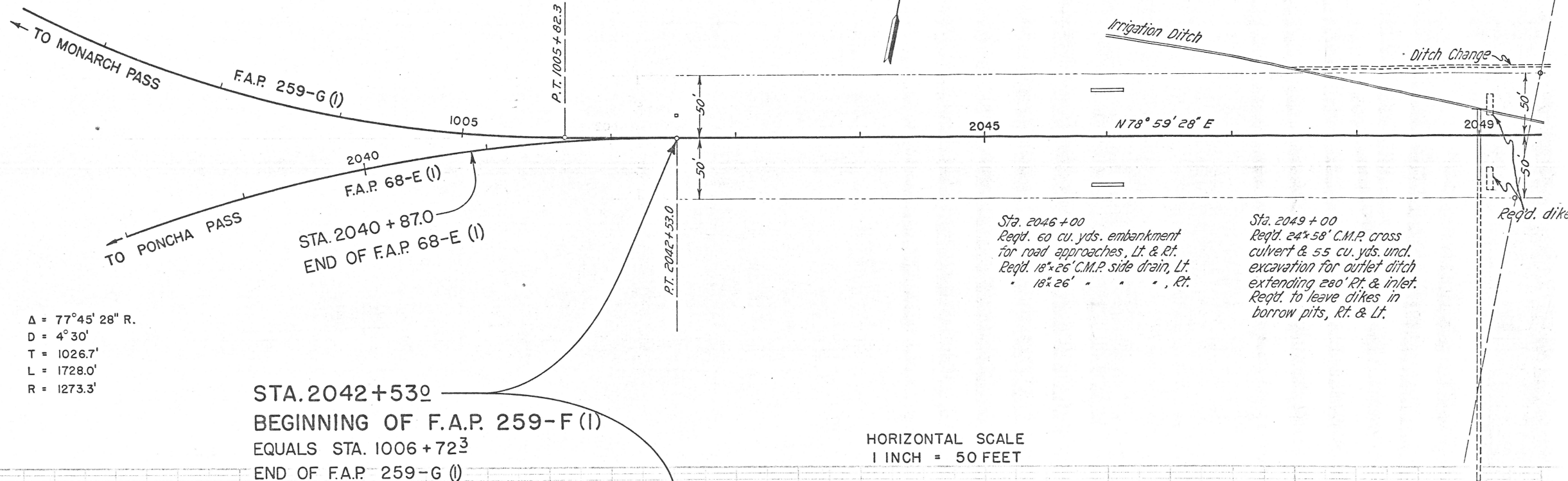
Sta. 2042+53  
Req'd. Project Marker.



Sta. 2047+50 to 2050+00  
Req'd. 25 cu. yds. uncl. excavation for ditch change, Lt.

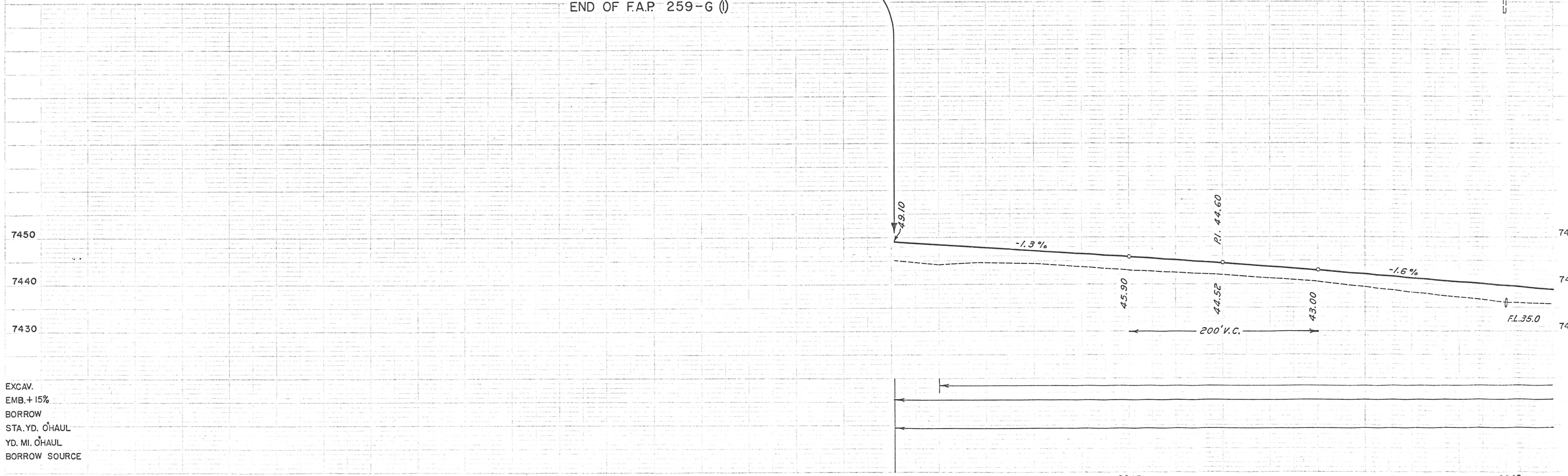
# PONCHA SPRINGS

$\Delta = 77^\circ 45' 28'' R.$   
 $D = 4^\circ 30'$   
 $T = 1026.7'$   
 $L = 1728.0'$   
 $R = 1273.3'$



STA. 2042+53  
BEGINNING OF F.A.P. 259-F (I)  
EQUALS STA. 1006+72<sup>3</sup>  
END OF F.A.P. 259-G (I)

HORIZONTAL SCALE  
1 INCH = 50 FEET

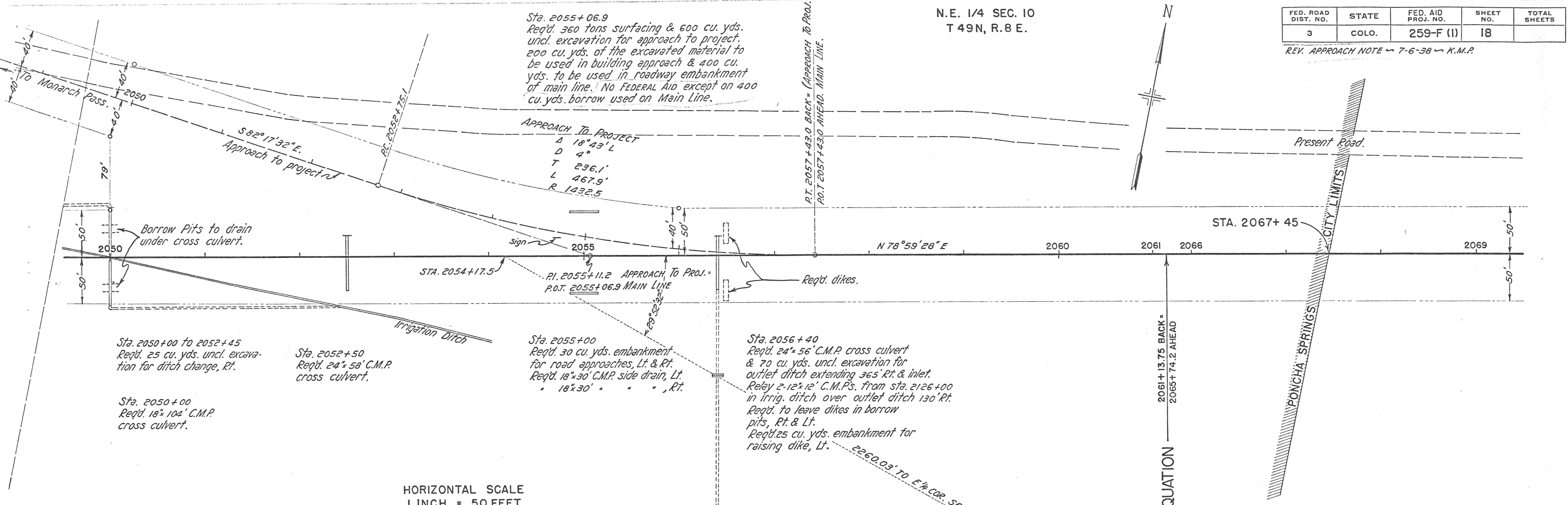
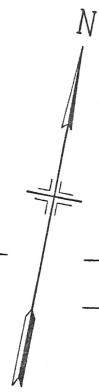


EXCAV.  
EMB. + 15%  
BORROW  
STA. YD. O'HAUL  
YD. MI. O'HAUL  
BORROW SOURCE

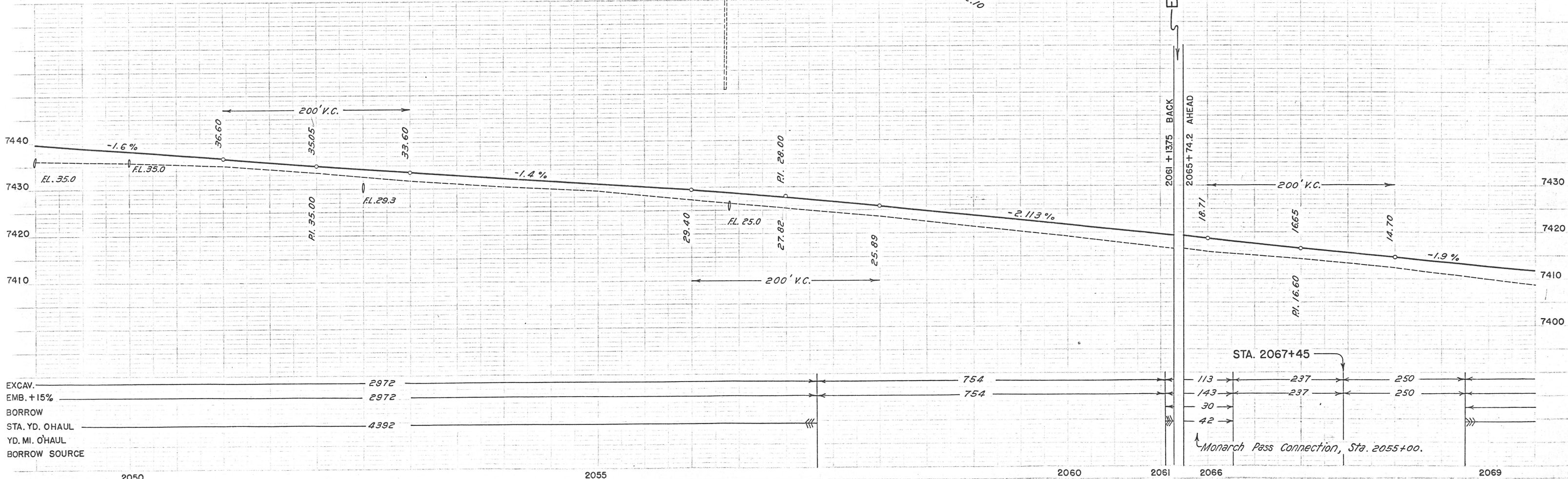
FED. ROAD DIST. NO.	STATE	FED. AID PROJ. NO.	SHEET NO.	TOTAL SHEETS
3	COLO.	259-F (1)	18	

REV. APPROACH NOTE 7-6-38 K.M.P.

N.E. 1/4 SEC. 10  
T 49N, R. 8 E.



HORIZONTAL SCALE  
1 INCH = 50 FEET

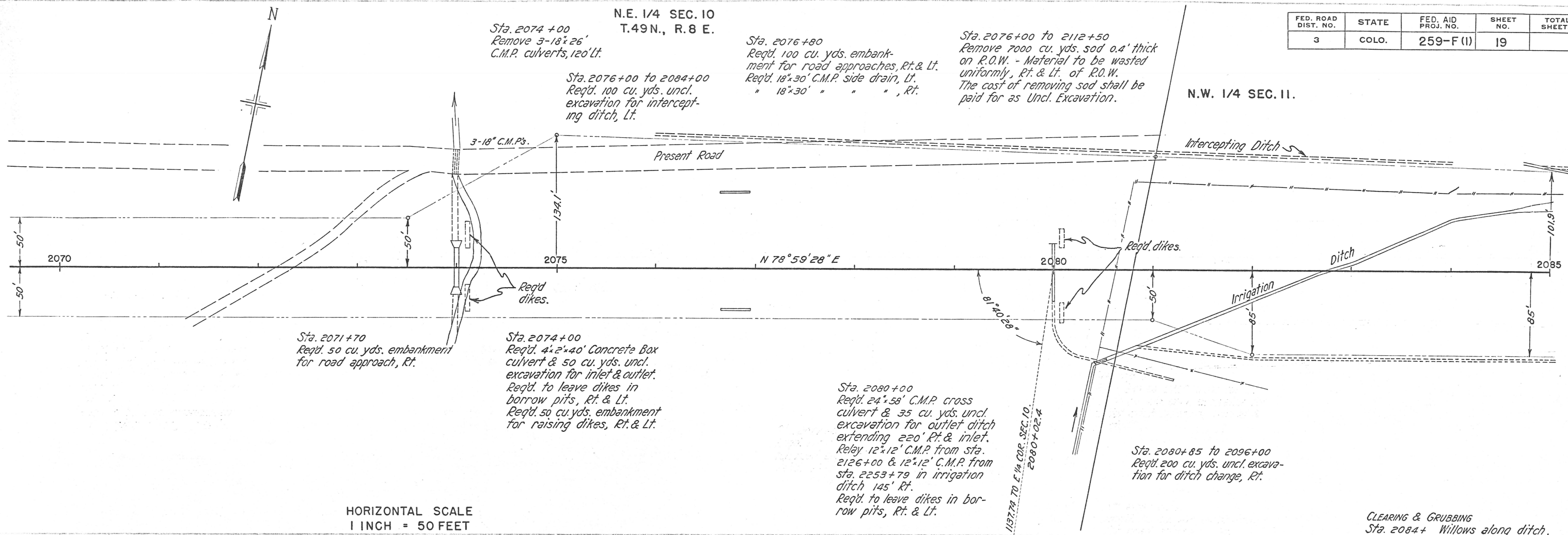


Monarch Pass Connection, Sta. 2055+00.

FED. ROAD DIST. NO.	STATE	FED. AID PROJ. NO.	SHEET NO.	TOTAL SHEETS
3	COLO.	259-F (I)	19	

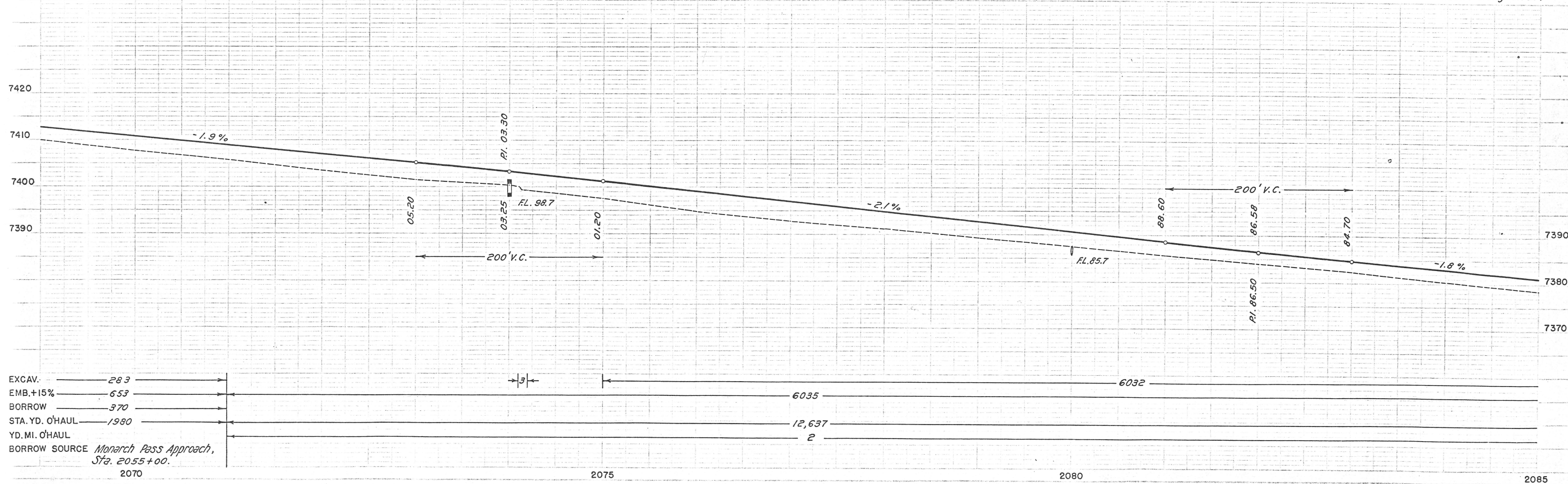
N.E. 1/4 SEC. 10  
T.49N., R.8 E.

N.W. 1/4 SEC. 11.



HORIZONTAL SCALE  
1 INCH = 50 FEET

CLEARING & GRUBBING  
Sta. 2084+ Willows along ditch.



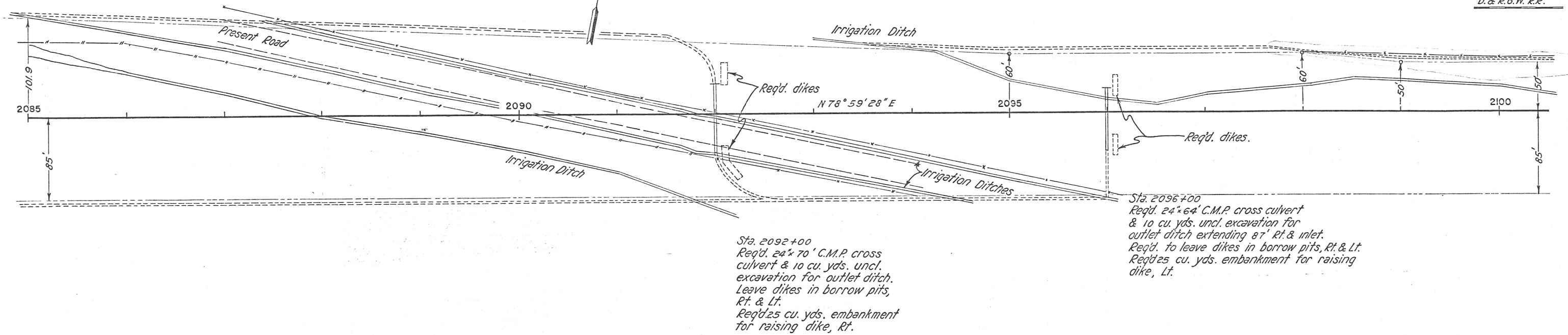
N.W. 1/4 SEC. 11.  
T. 49 N., R. 8 E.

FED. ROAD DIST. NO.	STATE	FED. AID PROJ. NO.	SHEET NO.	TOTAL SHEETS
3	COLO.	259-F (1)	20	

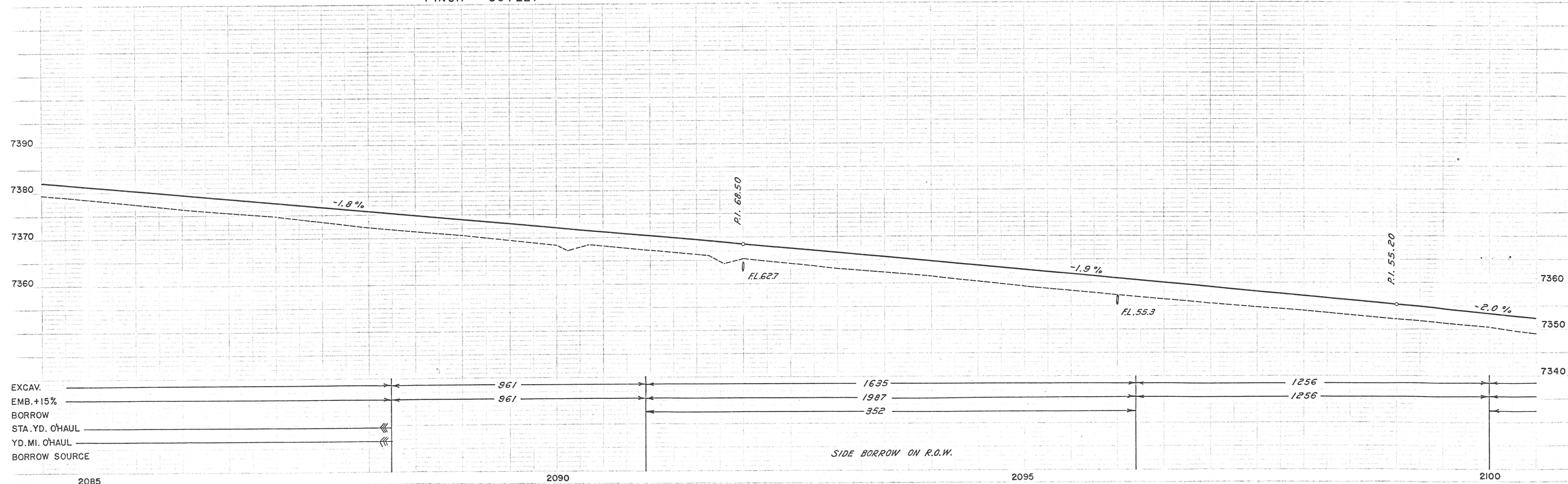
REV. FENCE 7-6-38 J.L.L.

Sta. 2084+90 to 2092+00  
Req'd. 125 cu. yds. uncl. excavation for ditch change, Lt.

Sta. 2093+50 to 2114+25  
Req'd. 300 cu. yds. uncl. excavation for ditch change, Lt.



HORIZONTAL SCALE  
1 INCH = 50 FEET

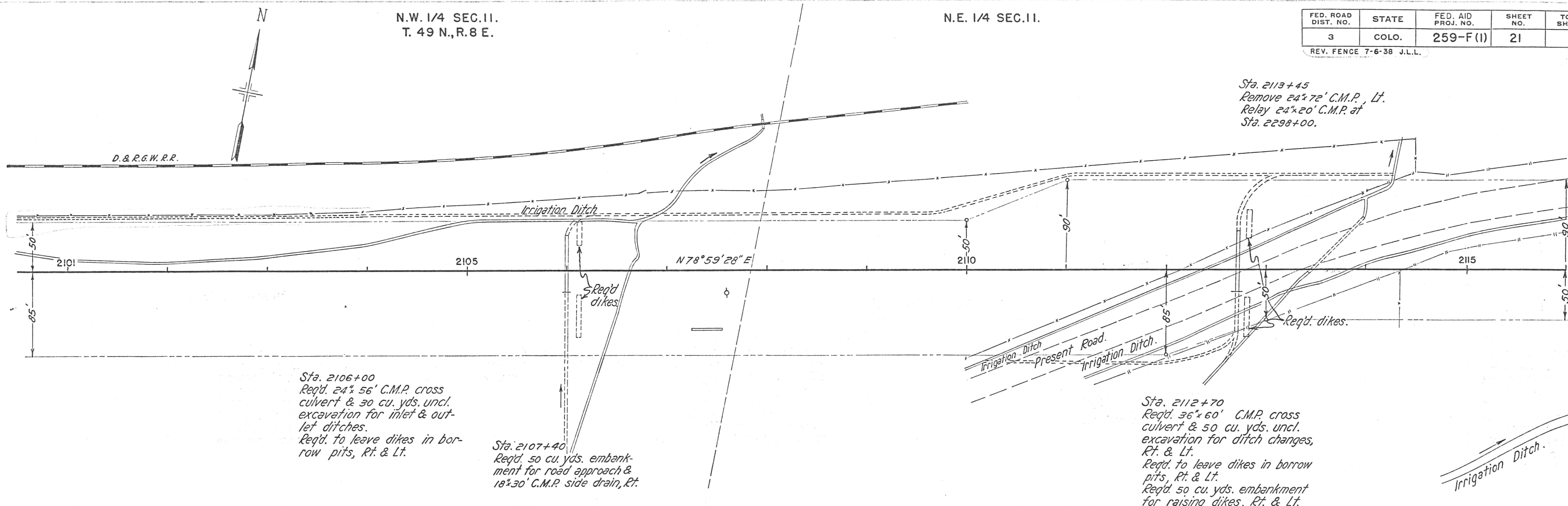


N.W. 1/4 SEC. 11.  
T. 49 N., R. 8 E.

N.E. 1/4 SEC. 11.

FED. ROAD DIST. NO.	STATE	FED. AID PROJ. NO.	SHEET NO.	TOTAL SHEETS
3	COLO.	259-F (1)	21	

REV. FENCE 7-6-38 J.L.L.



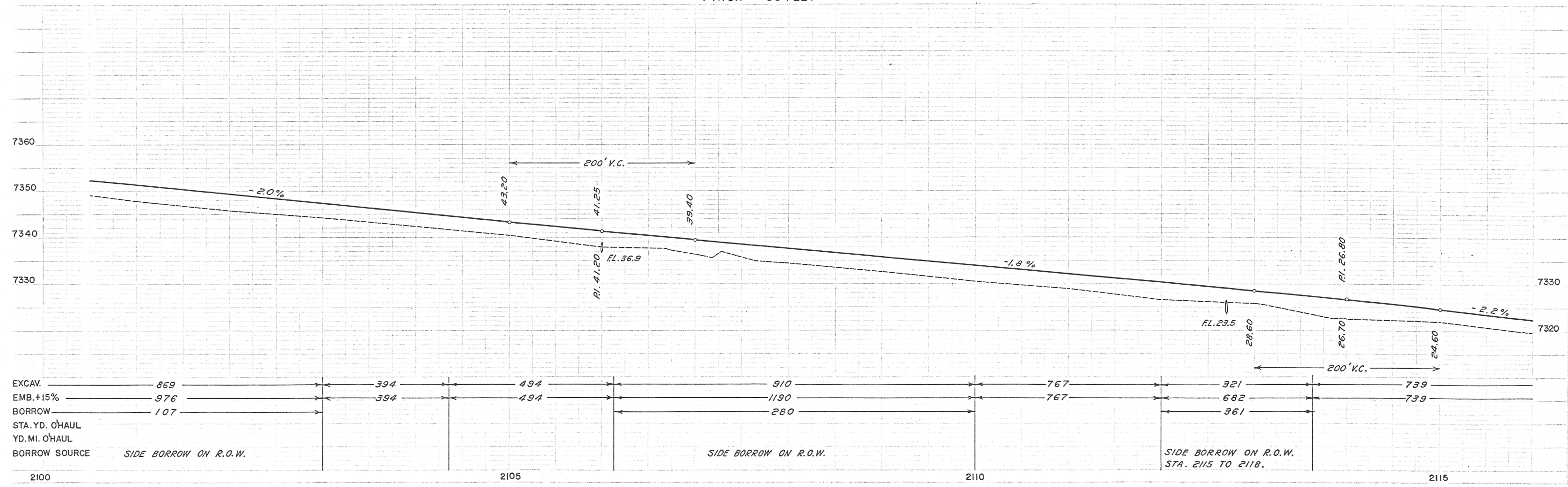
Sta. 2113+45  
Remove 24' x 72' C.M.P. Lt.  
Relay 24' x 20' C.M.P. at  
Sta. 2298+00.

Sta. 2106+00  
Req'd. 24' x 56' C.M.P. cross  
culvert & 30 cu. yds. uncl.  
excavation for inlet & out-  
let ditches.  
Req'd. to leave dikes in bor-  
row pits, Rt. & Lt.

Sta. 2107+40  
Req'd. 50 cu. yds. embank-  
ment for road approach &  
18' x 30' C.M.P. side drain, Rt.

Sta. 2112+70  
Req'd. 36' x 60' C.M.P. cross  
culvert & 50 cu. yds. uncl.  
excavation for ditch changes,  
Rt. & Lt.  
Req'd. to leave dikes in borrow  
pits, Rt. & Lt.  
Req'd. 50 cu. yds. embankment  
for raising dikes, Rt. & Lt.

HORIZONTAL SCALE  
1 INCH = 50 FEET

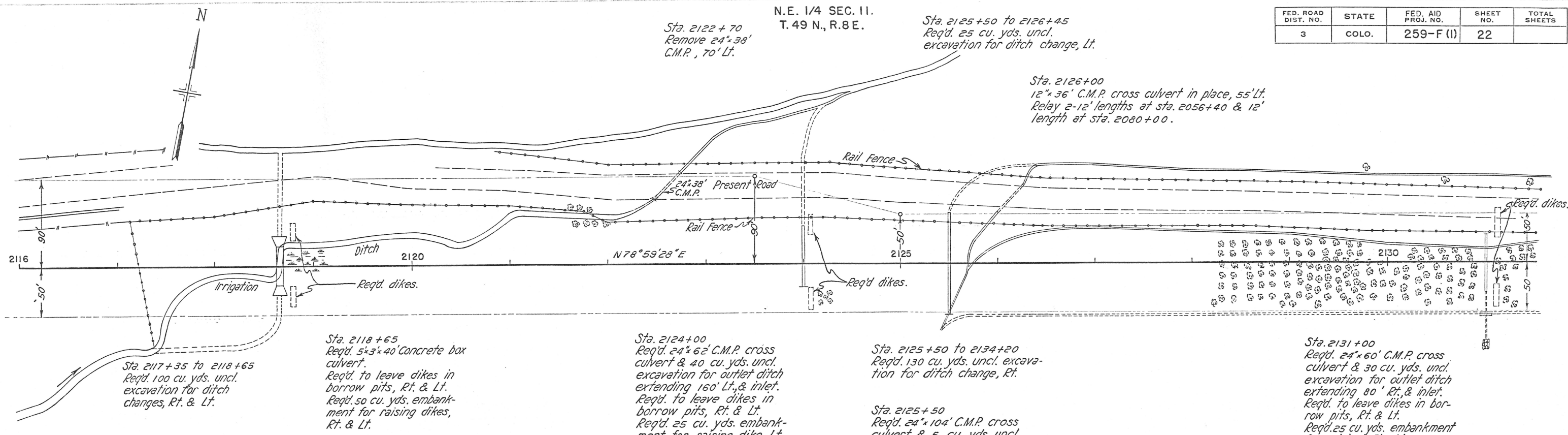


FED. ROAD DIST. NO.	STATE	FED. AID PROJ. NO.	SHEET NO.	TOTAL SHEETS
3	COLO.	259-F (1)	22	

N.E. 1/4 SEC. 11.  
T. 49 N., R. 8 E.  
Sta. 2122+70  
Remove 24'x38'  
C.M.P., 70' Lt.

Sta. 2125+50 to 2126+45  
Req'd. 25 cu. yds. uncl.  
excavation for ditch change, Lt.

Sta. 2126+00  
12'x36' C.M.P. cross culvert in place, 55' Lt.  
Relay 2-12' lengths at sta. 2056+40 & 12'  
length at sta. 2080+00.



Sta. 2117+35 to 2118+65  
Req'd. 100 cu. yds. uncl.  
excavation for ditch  
changes, Rt. & Lt.

Sta. 2118+65  
Req'd. 5'x3'x40' Concrete box  
culvert.  
Req'd. to leave dikes in  
borrow pits, Rt. & Lt.  
Req'd. 50 cu. yds. embank-  
ment for raising dikes,  
Rt. & Lt.

Sta. 2124+00  
Req'd. 24'x62' C.M.P. cross  
culvert & 40 cu. yds. uncl.  
excavation for outlet ditch  
extending 160' Lt. & inlet.  
Req'd. to leave dikes in  
borrow pits, Rt. & Lt.  
Req'd. 25 cu. yds. embank-  
ment for raising dike, Lt.

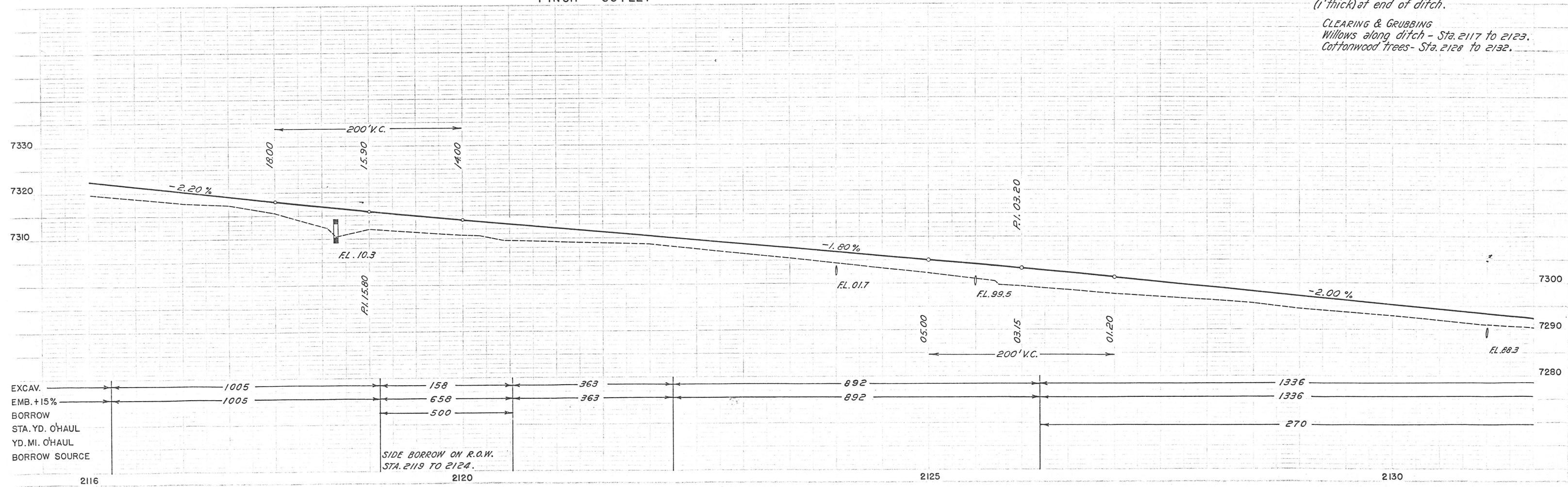
Sta. 2125+50 to 2134+20  
Req'd. 130 cu. yds. uncl. excava-  
tion for ditch change, Rt.

Sta. 2125+50  
Req'd. 24'x104' C.M.P. cross  
culvert & 5 cu. yds. uncl.  
excavation for inlet & outlet.

Sta. 2131+00  
Req'd. 24'x60' C.M.P. cross  
culvert & 30 cu. yds. uncl.  
excavation for outlet ditch  
extending 80' Rt. & inlet.  
Req'd. to leave dikes in bor-  
row pits, Rt. & Lt.  
Req'd. 25 cu. yds. embankment  
for raising dike, Lt.  
Relay 12'x14' C.M.P. from sta.  
2271+50 & 12'x12' C.M.P. from  
2279+44 in irrigation ditch  
over outlet ditch, 55' Rt.  
Req'd. 7 sq. yds. grouted  
rubble slope & ditch paving  
(1' thick) at end of ditch.

HORIZONTAL SCALE  
1 INCH = 50 FEET

CLEARING & GRUBBING  
Willows along ditch - Sta. 2117 to 2123.  
Cottonwood trees - Sta. 2128 to 2132.



N.E. 1/4 SEC. 11.  
T.49 N., R.8 E.

FORCE ACCOUNT (NO FEDERAL AID)  
Sta. 2137+65  
Req'd. to build dugout cellar, 130' Lt.

NO FEDERAL AID.  
Sta. 2137+65 to 2138+25  
Req'd. 4" 130' vitrified clay pipe drain to extend from rebuilt dugout cellar to inlet of culvert.

Sta. 2138+40  
Req'd. 30 cu. yds. embankment for road approach, Lt.

Sta. 2138+75  
Req'd. 25 cu. yds. embankment for walk approaches, Rt. & Lt.

Sta. 2141+00 to 2152+90  
Req'd. 100 cu. yds. uncl. excavation for ditch change, Lt.

Sta. 2140+28  
Req'd. 18" x 30' C.M.P. side drain & 25 cu. yds. embankment for road approach, Lt.

Sta. 2140+86  
Req'd. 18" x 12' C.M.P. side drain & 10 cu. yds. embankment for walk approach, Lt.

Sta. 2134+17 to 2135+65  
Remove haystack & stacking rig & reset 650' Rt. of Sta. 2134+00.

Sta. 2136+40  
Req'd. 25 cu. yds. uncl. excavation for road approach, Rt.

Sta. 2136+00  
Req'd. 15 cu. yds. uncl. excavation for outlet ditch extending 55' Rt.  
Req'd. 8 sq. yds. grouted rubble slope & ditch paving (1" thick) at end of ditch.

Sta. 2138+50  
Remove 27' x 20' old dugout cellar, Rt.  
Req'd. 50 cu. yds. embankment to fill excavation.

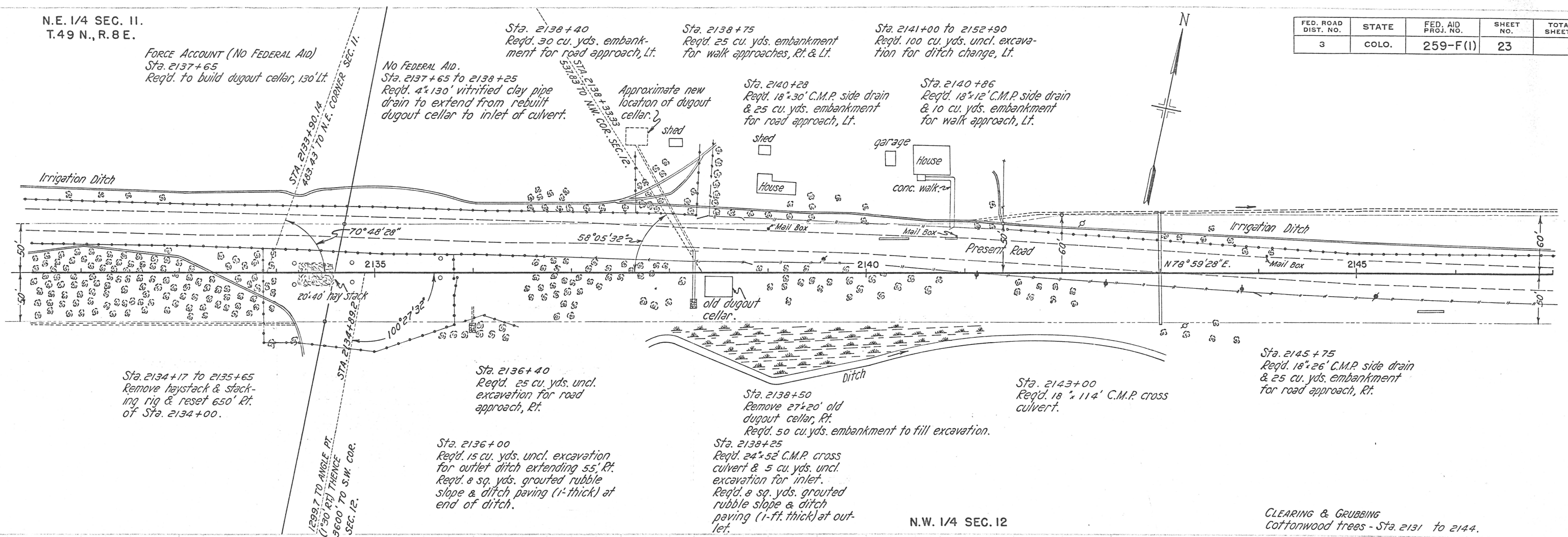
Sta. 2138+25  
Req'd. 24" x 52' C.M.P. cross culvert & 5 cu. yds. uncl. excavation for inlet.  
Req'd. 8 sq. yds. grouted rubble slope & ditch paving (1" thick) at outlet.

Sta. 2143+00  
Req'd. 18" x 114' C.M.P. cross culvert.

Sta. 2145+75  
Req'd. 18" x 26' C.M.P. side drain & 25 cu. yds. embankment for road approach, Rt.

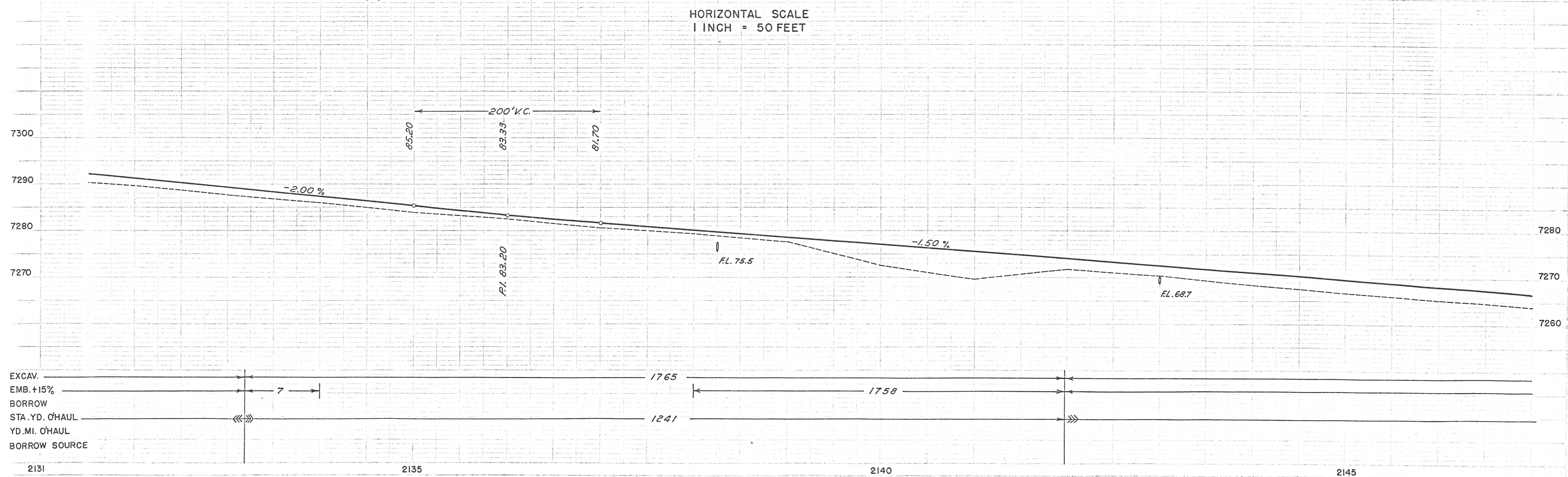
CLEARING & GRUBBING  
Cottonwood trees - Sta. 2131 to 2144.

FED. ROAD DIST. NO.	STATE	FED. AID PROJ. NO.	SHEET NO.	TOTAL SHEETS
3	COLO.	259-F(1)	23	



HORIZONTAL SCALE  
1 INCH = 50 FEET

N.W. 1/4 SEC. 12



FED. ROAD DIST. NO.	STATE	FED. AID PROJ. NO.	SHEET NO.	TOTAL SHEETS
3	COLO.	259-F(1)	24	

S.W. 1/4 SEC. 1.  
T. 49N., R. 8E.



Sta. 2161+70  
Required 100 cu. yds.  
embankment for road  
approaches, Rt. & Lt.

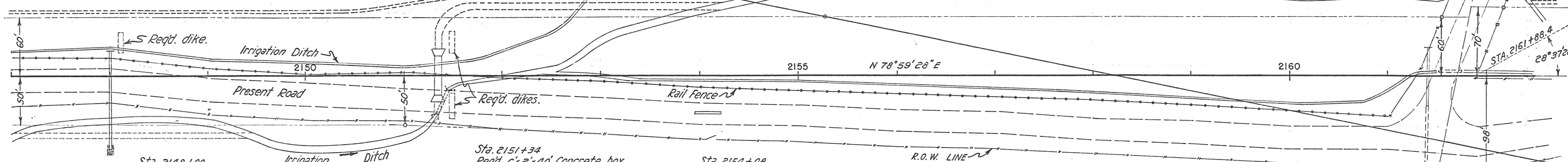
Sta. 2151+34 to 2154+20  
Reqd. 250 cu. yds. uncl.  
excavation for ditch  
change, Lt.

Sta. 2161+61  
Remove 12"x24" C.M.P., Lt.

S.E. 1/4  
SEC. 1

24"x24" C.M.P. to  
remain in place.

Sta. 2161+88.4  
28°37'28"



Sta. 2147+00 to 2149+45  
Reqd. 175 cu. yds. embankment for diked ditch, Rt.

Sta. 2148+00  
Reqd. 24"x102" C.M.P. cross culvert & 5 cu. yds. uncl. excavation for inlet.

Reqd. to leave dike in borrow pit, Lt.  
Reqd. 5 cu. yds. embankment for raising dike, Lt.  
Reqd. 8 sq. yds. grouted rubble slope & ditch paving (1" thick) at outlet of culvert.

Sta. 2151+34  
Reqd. 6"x2"x40" Concrete box culvert & 25 cu. yds. uncl. excavation for inlet.  
Remove 5"x2"x24" Concrete box, Rt.  
Reqd. to leave dikes in borrow pits, Rt. & Lt.

Sta. 2154+08  
Reqd. 18"x26" C.M.P. side drain & 30 cu. yds. embankment for road approach, Rt.

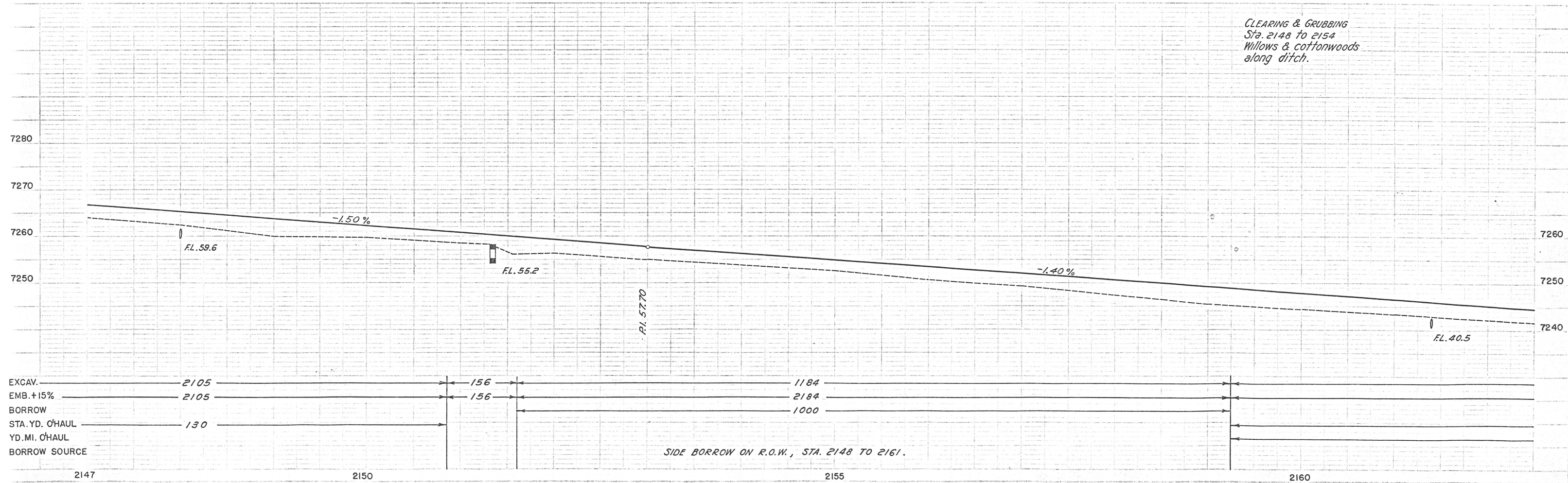
Sta. 2161+40  
Reqd. 24"x60" C.M.P. cross culvert & 160 cu. yds. uncl. excavation for outlet ditch extending 157' Rt. & Inlet.  
Reqd. Timber chute in outlet ditch, 175' Rt., as per details shown on Sheet No. 5.

N.W. 1/4 SEC. 12.

HORIZONTAL SCALE  
1 INCH = 50 FEET

N.E. 1/4 SEC. 12.

CLEARING & GRUBBING  
Sta. 2148 to 2154  
Willows & cottonwoods along ditch.



2147

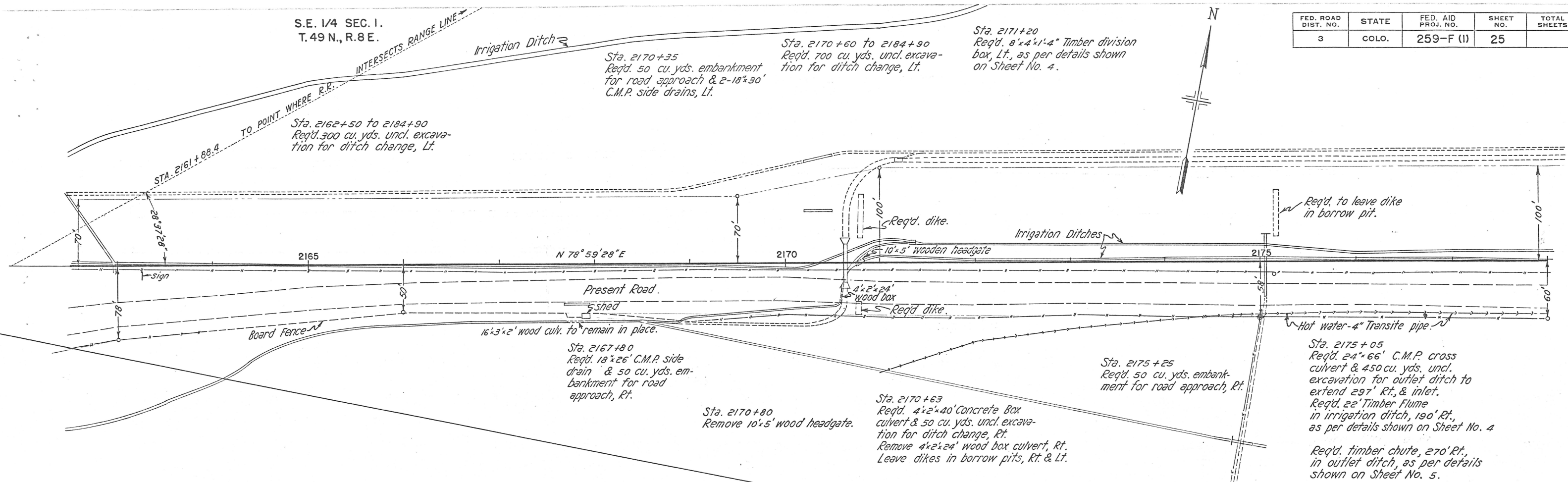
2150

2155

2160

S.E. 1/4 SEC. 1.  
T. 49 N., R. 8 E.

FED. ROAD DIST. NO.	STATE	FED. AID PROJ. NO.	SHEET NO.	TOTAL SHEETS
3	COLO.	259-F (1)	25	

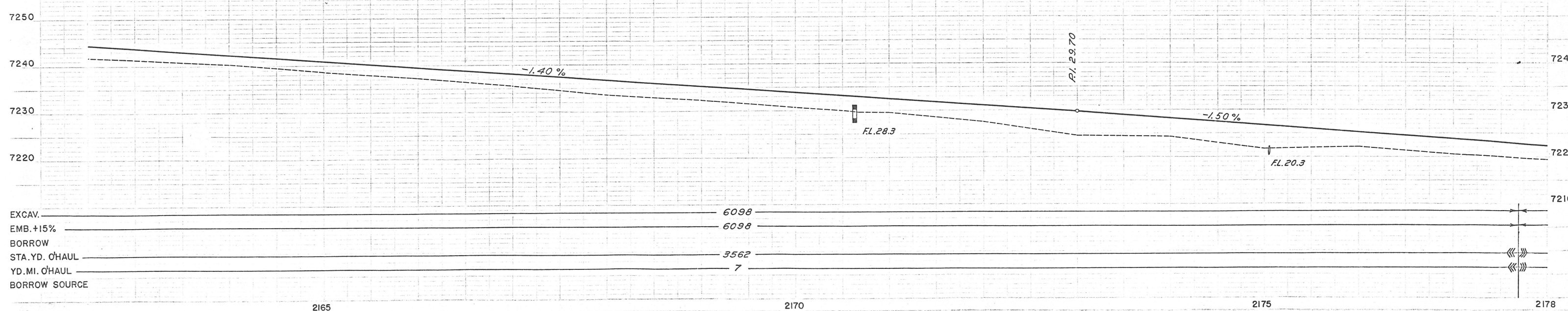


N.E. 1/4 SEC. 12.

HORIZONTAL SCALE  
1 INCH = 50 FEET

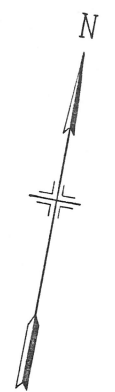
NOTE:  
The following water pipes on R.O.W. are to remain in place.  
Sta. 2174+40 to 2230+20  
4" Transite hot water pipe.  
Sta. 2207+65 to 2249+35  
2-12" C.I. pipes (City water main)  
Sta. 2207+70 to 2244+00  
16" wood stave pipe.

CLEARING & GRUBBING  
Sta. 2171 to 2178  
Willows along ditch.



FED. ROAD DIST. NO.	STATE	FED. AID PROJ. NO.	SHEET NO.	TOTAL SHEETS
3	COLO.	259-F (I)	26	

S. E. 1/4 SEC. 1.  
T. 49 N., R. 8 E.

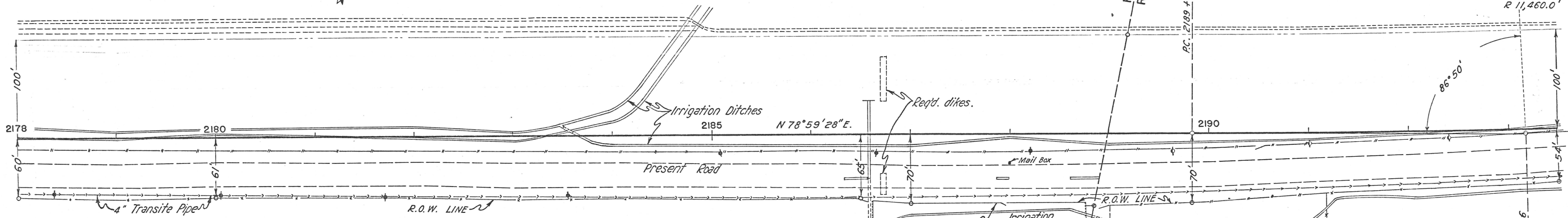


Sta. 2183+55  
Remove wood flume, Lt.

Sta. 2184+85  
Reqd. 18"x12' C.M.P. in ditch change, Lt.

Sta. 2184+90 to 2200+50  
Reqd. 200 cu. yds. und. excavation for ditch change, Lt.

TO POINT WHERE R.R. INTERSECTS RANGE LINE  
 $\Delta$  3°20'28" L  
 $D$  0°30'  
 $T$  334.2'  
 $L$  668.3'  
 $R$  11,460.0'



Sta. 2186+48  
Reqd. 18"x24' C.M.P. side drain & 30 cu. yds. embankment for road approach, Rt.

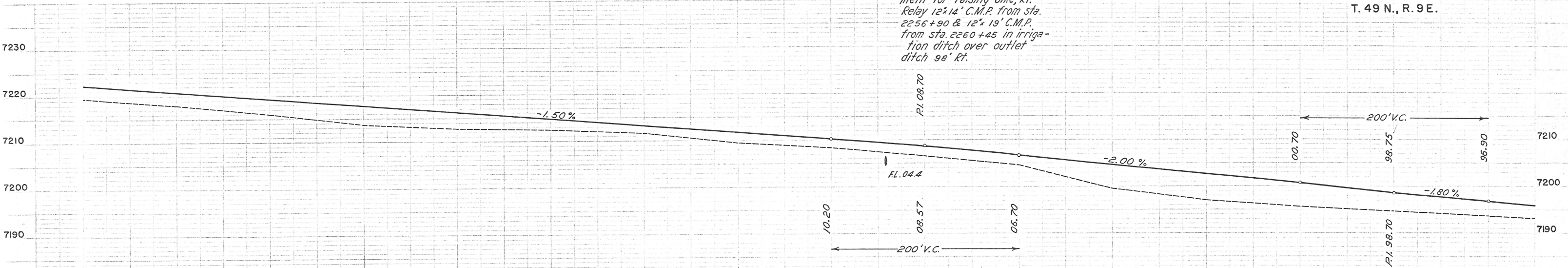
Sta. 2188+75  
Reqd. 18"x30' C.M.P. side drain & 50 cu. yds. embankment for road approach, Rt.

Sta. 2186+58  
Reqd. 24"x80' C.M.P. cross culvert & 75 cu. yds. und. excavation for outlet ditch extending 195' Rt. & Inlet.  
Leave dikes in borrow pits, Rt. & Lt.  
Reqd. 25 cu. yds. embankment for raising dike, Rt.  
Relay 12"x14' C.M.P. from sta. 2256+90 & 12"x19' C.M.P. from sta. 2260+45 in irrigation ditch over outlet ditch 98' Rt.

Sta. 2187+92  
Reqd. 18"x12' C.M.P. side drain & 10 cu. yds. embankment for walk approach, Rt.

CLEARING & GRUBBING  
Sta. 2178 to 2184.  
Willows along ditches.  
S.W. 1/4 SEC. 6.  
T. 49 N., R. 9 E.

HORIZONTAL SCALE  
1 INCH = 50 FEET



EXCAV.	8766
EMB.+15%	8766
BORROW	
STA.YD. O'HAUL	18,130
YD. MI. O'HAUL	1
BORROW SOURCE	

2180

2185

2190

2193

FED. ROAD DIST. NO.	STATE	FED. AID PROJ. NO.	SHEET NO.	TOTAL SHEETS
3	COLO.	259-F (I)	27	

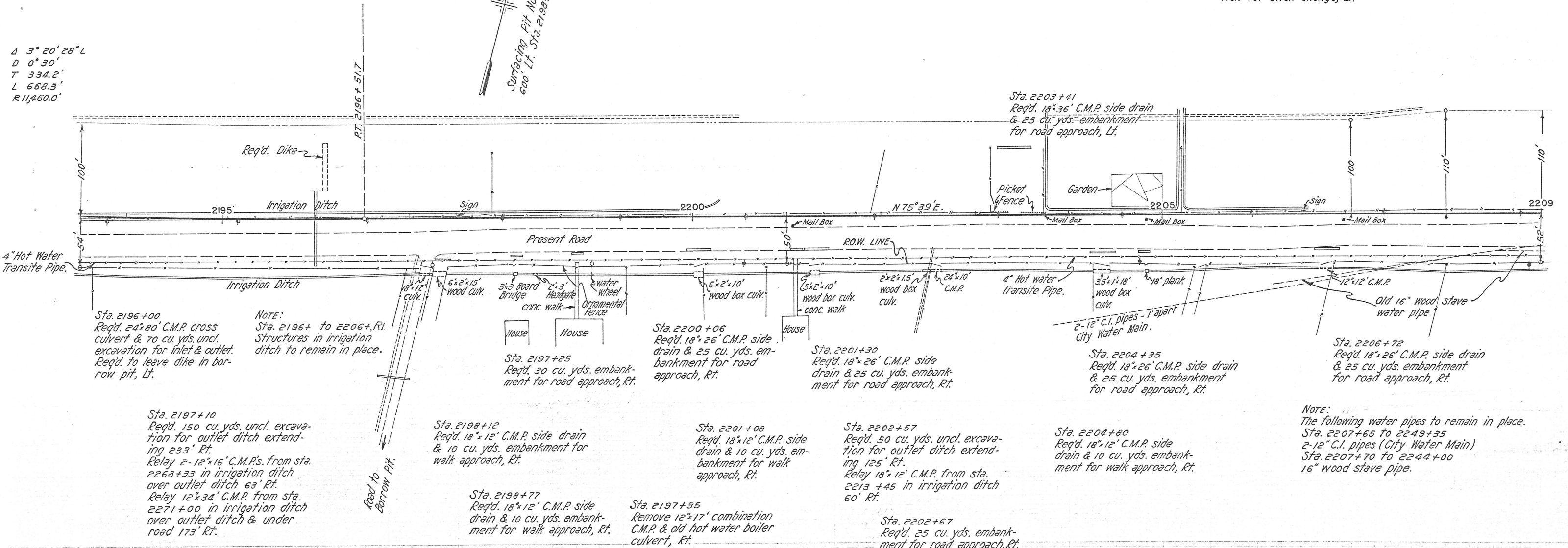
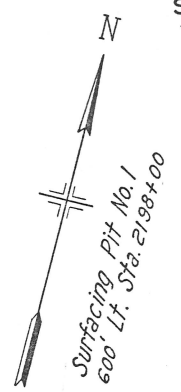
S.W. 1/4 SEC. 6.  
T. 49 N., R. 9 E.

Sta. 2203+80 to 2205+20  
Req'd. 15 cu. yds. uncl. excavation for ditch change, Lt.

Sta. 2203+79 to 2204+52  
Transplant trees, shrubs, etc., Lt.

Sta. 2205+25 to 2207+75  
Req'd. 35 cu. yds. uncl. excavation for ditch change, Lt.

$\Delta$  3° 20' 28" L  
D 0° 30'  
T 334.2'  
L 668.3'  
R 11,460.0'



Sta. 2196+00  
Req'd. 24'x80' C.M.P. cross culvert & 70 cu. yds. uncl. excavation for inlet & outlet. Req'd. to leave dike in borrow pit, Lt.

NOTE:  
Sta. 2196+ to 2206+ Rt. Structures in irrigation ditch to remain in place.

Sta. 2197+10  
Req'd. 150 cu. yds. uncl. excavation for outlet ditch extending 233' Rt.  
Relay 2-12"x16" C.M.P.'s from sta. 2268+33 in irrigation ditch over outlet ditch 63' Rt.  
Relay 12"x34" C.M.P. from sta. 2271+00 in irrigation ditch over outlet ditch & under road 173' Rt.

Sta. 2198+12  
Req'd. 18"x12" C.M.P. side drain & 10 cu. yds. embankment for walk approach, Rt.

Sta. 2198+77  
Req'd. 18"x12" C.M.P. side drain & 10 cu. yds. embankment for walk approach, Rt.

Sta. 2200+06  
Req'd. 18"x26" C.M.P. side drain & 25 cu. yds. embankment for road approach, Rt.

Sta. 2197+35  
Remove 12"x17" combination C.M.P. & old hot water boiler culvert, Rt.

Sta. 2201+30  
Req'd. 18"x26" C.M.P. side drain & 25 cu. yds. embankment for road approach, Rt.

Sta. 2201+08  
Req'd. 18"x12" C.M.P. side drain & 10 cu. yds. embankment for walk approach, Rt.

Sta. 2202+57  
Req'd. 50 cu. yds. uncl. excavation for outlet ditch extending 125' Rt.  
Relay 18"x12" C.M.P. from sta. 2213+45 in irrigation ditch 60' Rt.

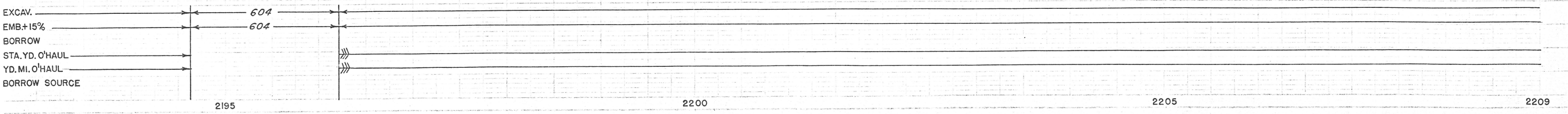
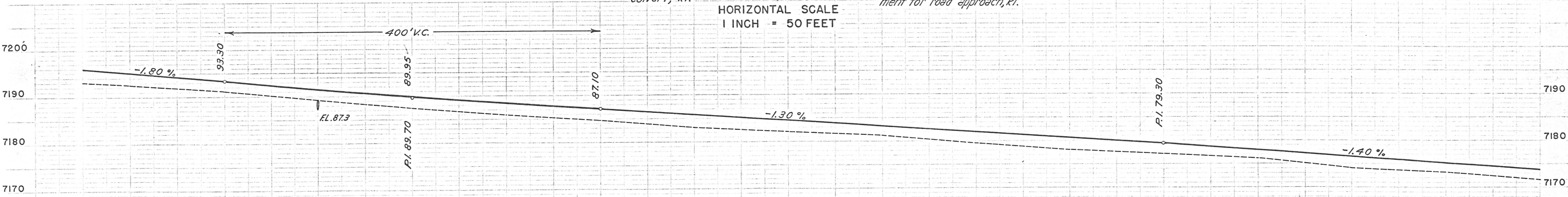
Sta. 2204+35  
Req'd. 18"x26" C.M.P. side drain & 25 cu. yds. embankment for road approach, Rt.

Sta. 2204+80  
Req'd. 18"x12" C.M.P. side drain & 10 cu. yds. embankment for walk approach, Rt.

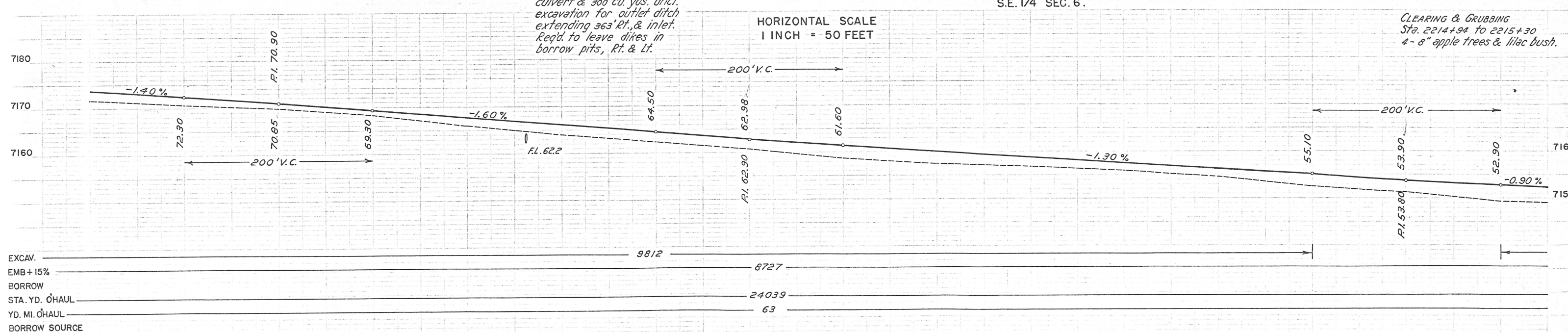
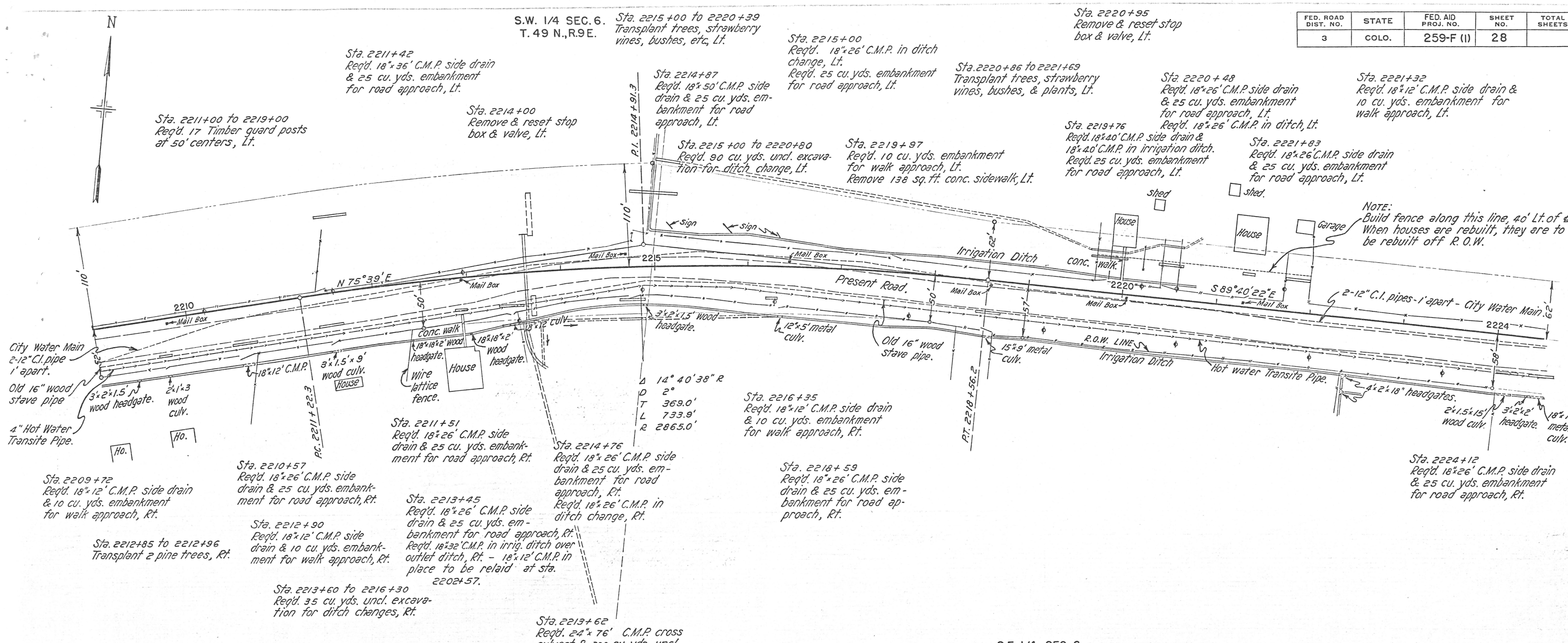
Sta. 2206+72  
Req'd. 18"x26" C.M.P. side drain & 25 cu. yds. embankment for road approach, Rt.

NOTE:  
The following water pipes to remain in place.  
Sta. 2207+65 to 2249+35  
2-12" C.I. pipes (City Water Main)  
Sta. 2207+70 to 2244+00  
16" wood stave pipe.

HORIZONTAL SCALE  
1 INCH = 50 FEET



FED. ROAD DIST. NO.	STATE	FED. AID PROJ. NO.	SHEET NO.	TOTAL SHEETS
3	COLO.	259-F (I)	28	





S.E. 1/4 SEC. 6.  
T. 49 N., R. 9 E.

S.W. 1/4 SEC. 5.

FED. ROAD DIST. NO.	STATE	FED. AID PROJ. NO.	SHEET NO.	TOTAL SHEETS
3	COLO.	259-F (1)	30	

# SALIDA



Sta. 2248+33 to 2248+78  
Transplant bushes, Lt.

Sta. 2248+45  
Reqd. 25 cu. yds. embankment for road approach, Lt.

Sta. 2244+42  
Reqd. 18" x 60' C.M.P. side drain & 25 cu. yds. embankment for road approach, Lt.

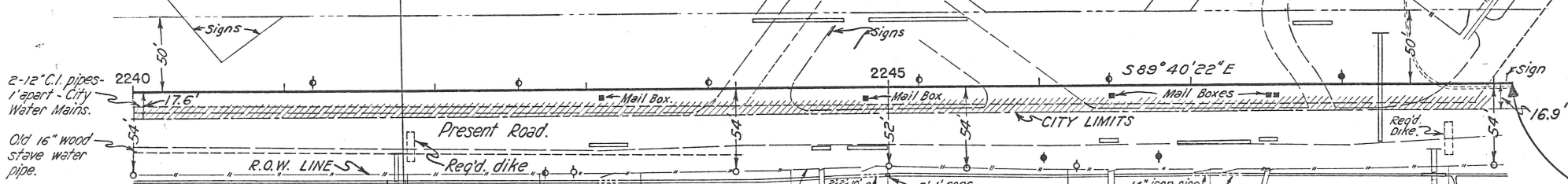
Sta. 2247+80  
Reqd. 18" x 26' C.M.P. side drain & 25 cu. yds. embankment for road approach, Lt.

Sta. 2248+63 to 2248+87  
Remove 85 sq. ft. (17' x 5') 4" concrete sidewalk, Lt.  
Remove 5 sq. yds. (5' x 9') 6" " driveway, Lt.  
Remove 25' x 2.5' x .5' concrete curb & gutter, Lt.  
This last item shall be classified and paid for as removal of one structure.

Sta. 2245+20  
Reqd. 18" x 64' C.M.P. side drain & 25 cu. yds. embankment for road approach, Lt.

Sta. 2248+50  
Remove 4" tile sewer drain, Lt.

U.S. HIGHWAY NO. 285  
F ST.



Sta. 2241+74  
Reqd. 70 cu. yds. uncl. excavation for outlet ditch extending 370' Rt. & 24" x 12' C.M.P. in irrigation ditch 59' Rt.  
Reqd. 24" x 18' C.M.P. under sidewalk & 5 cu. yds. uncl. excavation for inlet, (headwall reqd.) Rt.  
Reqd. to leave dike in borrow pit, Rt.  
Reqd. 25 cu. yds. embankment for raising dike, Rt.  
Reqd. timber chute in outlet ditch, 345' Rt., as per details Shown on Sheet No. 5.

Sta. 2243+14  
Reqd. 18" x 26' C.M.P. side drain & 25 cu. yds. embankment for road approach, Rt.

Sta. 2243+18  
Remove & reset stop box & valve, Rt.

Sta. 2244+86  
Reqd. 18" x 26' C.M.P. side drain & 25 cu. yds. embankment for road approach, Rt.

Sta. 2244+55  
Reqd. 18" x 12' C.M.P. side drain & 10 cu. yds. embankment for walk approach, Rt.

Sta. 2246+46  
Reqd. 18" x 12' C.M.P. side drain & 10 cu. yds. embankment for walk approach, Rt.

Sta. 2247+15  
Reqd. 18" x 48' C.M.P. side drain & 50 cu. yds. embankment for double road approach, Rt.

Sta. 2247+50  
Reqd. 18" x 12' C.M.P. side drain & 15 cu. yds. embankment for walk approach, Rt.

Sta. 2248+25  
Reqd. 24" x 72' C.M.P. cross culvert & 10 cu. yds. uncl. excavation for inlet.

Sta. 2248+60  
Reqd. 18" x 16' Cor. met. siphon pipe in irrig. ditch & 110 cu. yds. uncl. excavation for outlet ditch extending 442' Rt.  
Reqd. 36" x 16' C.M.P. with headwall under sidewalk, Rt.  
Reqd. to leave dike in borrow pit, Rt.  
Reqd. 25 cu. yds. embankment for raising dike, Rt.  
Reqd. Treated timber chutes, 305' & 421' Rt.; as per details shown on Sheet No. 5.

STA. 2249+120  
END OF F.A.P. 259-F (1)  
BEGINNING OF F.A.P. 113-A (2)

HORIZONTAL SCALE  
1 INCH = 50 FEET

