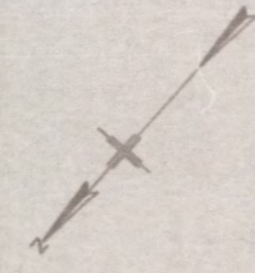


PAGEBREAKFY2023

78 0V

CONTRACT NO.	DATE	BY	CHKD.	APP'D.
1-2-27	1914			

SW 1/4, SECTION 33,
T.103 R.67W



NO.	DESCRIPTION	DATE
1

NO.	DESCRIPTION	DATE
1

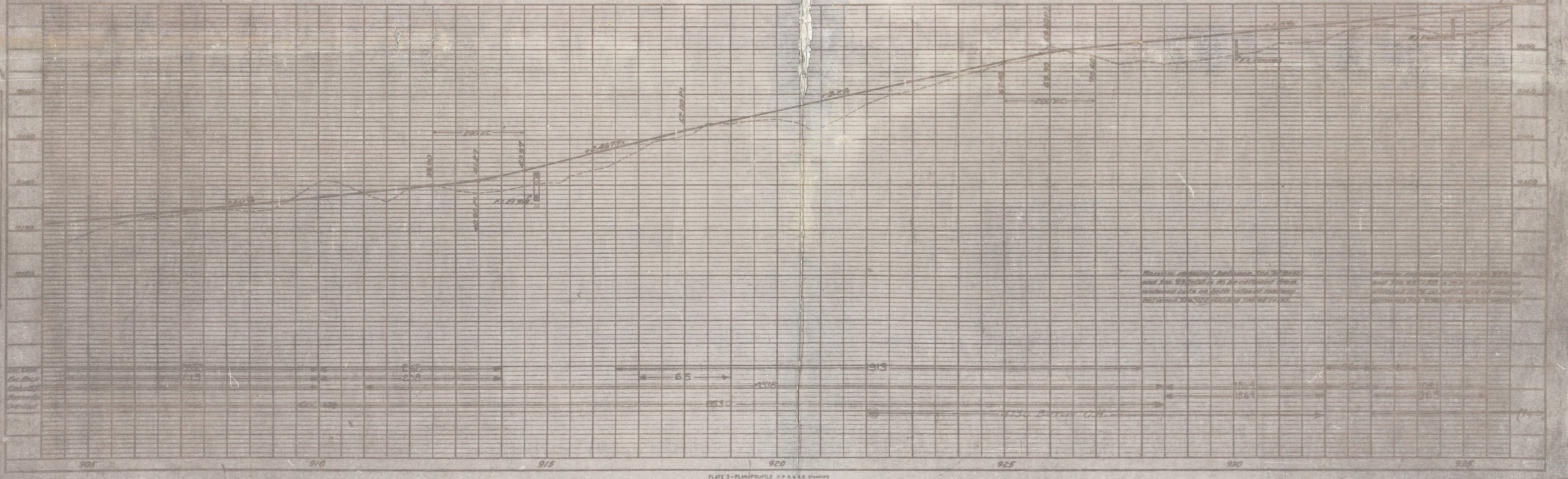
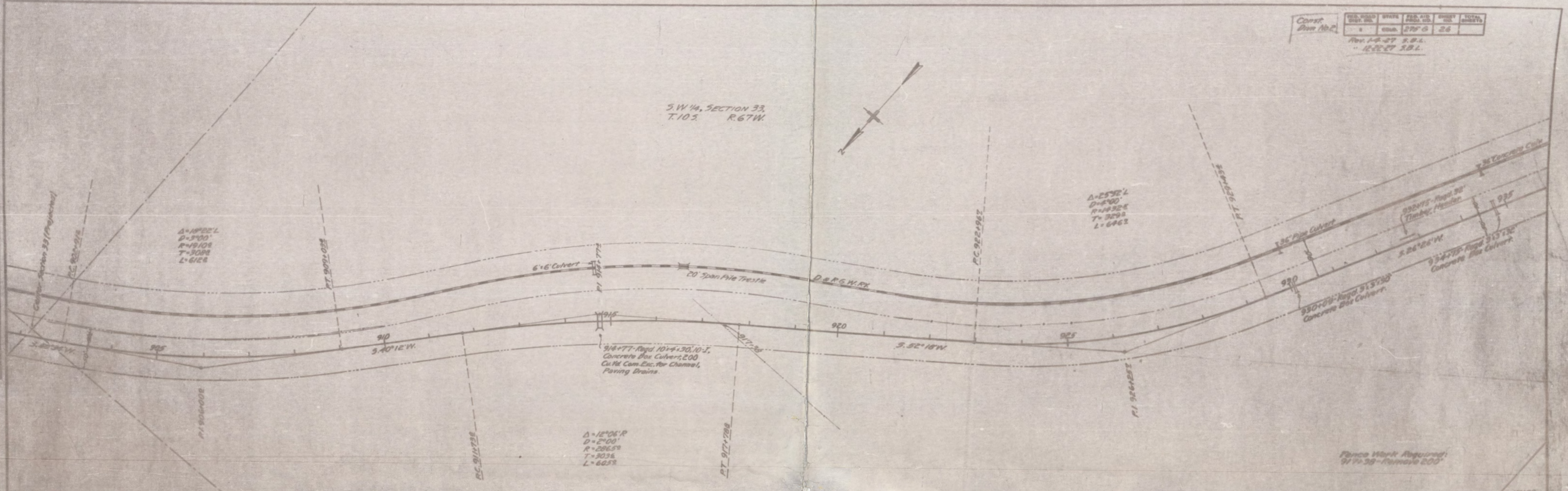


PLATE 1 - PLAN/PROFILE OF D.P.P.W.R.K. STATION
SCALE: 1" = 100' HORIZ. 1" = 10' VERT.

N.W. 1/4, SECTION 4,
T.113, R.67W.

STA 959+00-END OF CONSTRUCTION
DIVISION No. 2 AND BEGINNING OF
CONSTRUCTION DIVISION No. 3

FILE NO.	REV.	DATE	BY	CHKD.	SCALE
1	1	11/10/07	ST		

Rev. 1-1-07 S.B.L.
Rev. 1-1-07 A.L.C. (S.B.L.)
+ 1-1-07 S.B.L.
+ 1-1-07 S.B.L.
+ 1-1-07 S.B.L.

PALMER LAKE

PLAN	REV.	DATE	BY	CHKD.
1	1	11/10/07	ST	

S.W. 1/4, SECTION 33,
T.103, R.67W.

EL PASO CO. DOUGLAS CO.

N.E. 1/4, SECTION 5,
T.113, R.67W.

Construction Division No. 2
Borrow Excavation Required From Sta
940+00 to Sta. 959+00 is available from
borrow pit 700 ft. northwest from
Sta. 947+75. Estimated Overhaul
7,000 Sta. Yds.

Fence Work Required:
948+45, Remove 110'
950+30, " 65'
959+25, " 65'
959+75, " 65'
959+92+50, Gate 315' Cr.
959+92+00, " 52' Cr.
962+30, Remove 75'
967+75-968+00, Remove 240'

NOTE: From Sta. 963+00 to 969+00 the grade line
shown on profile is 0.425 ft above inside edge of pavement
between Sta. 966+00 and 967+00 the pavement is to be
included 0.75 ft on the inside edge and to have super-elevation
0.7%. The surface between these stations is to be standard
except that a 4% crown is to be used.
The transition from the standard crown to the super-elevated
section is to proceed gradually from Sta. 963+00 to 966+00
and from Sta. 967+00 to 969+00.
Should section is to be built to provide for the pavement with a
4% shoulder as per standard section.

Maximum superelevation between Sta. 967+00
and Sta. 969+00 and between Sta. 969+00
and Sta. 974+00 is to be 0.7% with 200 ft
transition. Maximum superelevation between
Sta. 974+00 and Sta. 975+00 is to be 0.7%
with 100 ft transition. All other sections
are to be built to provide for the pavement with a
4% shoulder as per standard section.

PROFILE	REV.	DATE	BY	CHKD.
1	1	11/10/07	ST	

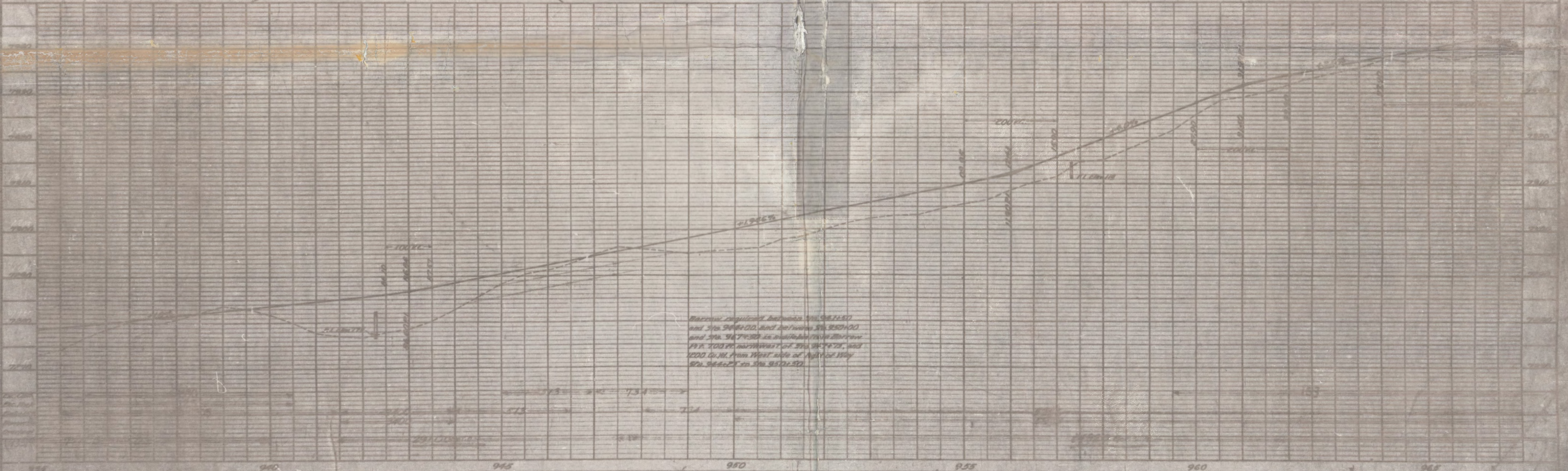


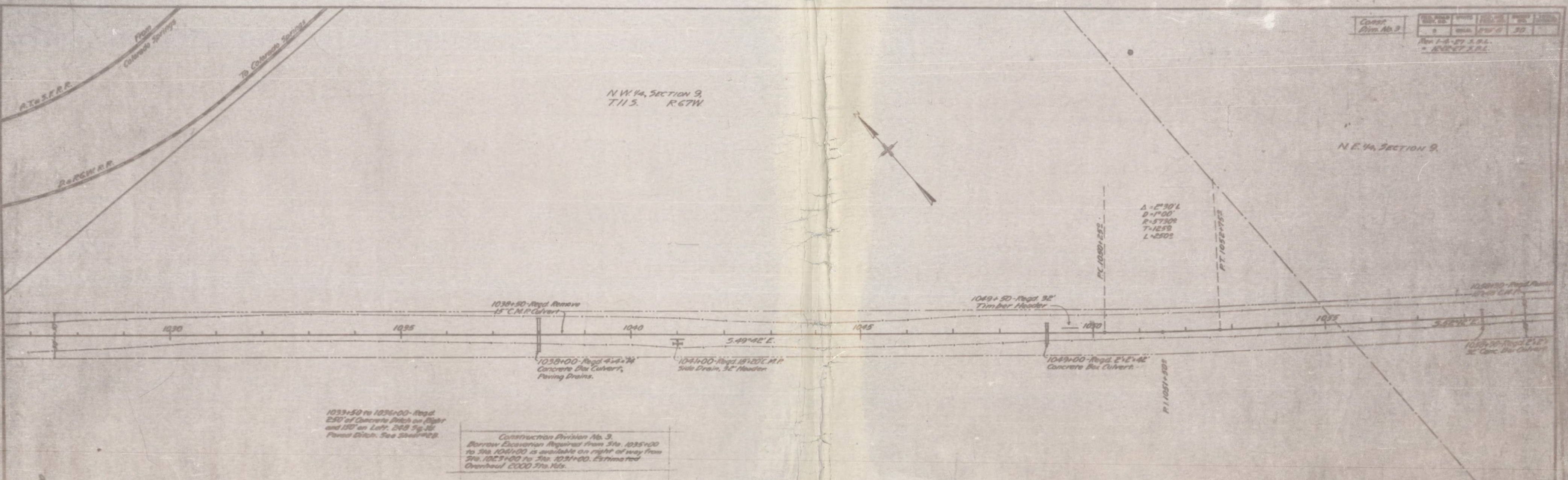
PLATE 1-PLAN-PROFILE U.S. & G. ENGINEERS

Scale	1" = 40'
Sheet No.	1
Project No.	1000
Date	1915

N.W. 1/4, SECTION 9,
T.11S. R.67W.

N.E. 1/4, SECTION 9.

PLAN	1" = 40'
Profile	1" = 40'
Vertical Curve	1" = 40'
Grading	1" = 40'



1033+50 to 1036+00 - Road
240' of Concrete Patch on Right
and 120' on Left. See Fig. 15
Power Eject. See Sheet 1002.

Construction Division No. 3
Borrow Excavation Required from Sta. 1035+00
to Sta. 1040+00 is available on right of way from
Sta. 1027+00 to Sta. 1034+00. Estimated
Overhaul 2000 Sta. Yds.

PROFILE	1" = 40'
Vertical Curve	1" = 40'
Grading	1" = 40'
Excavation	1" = 40'

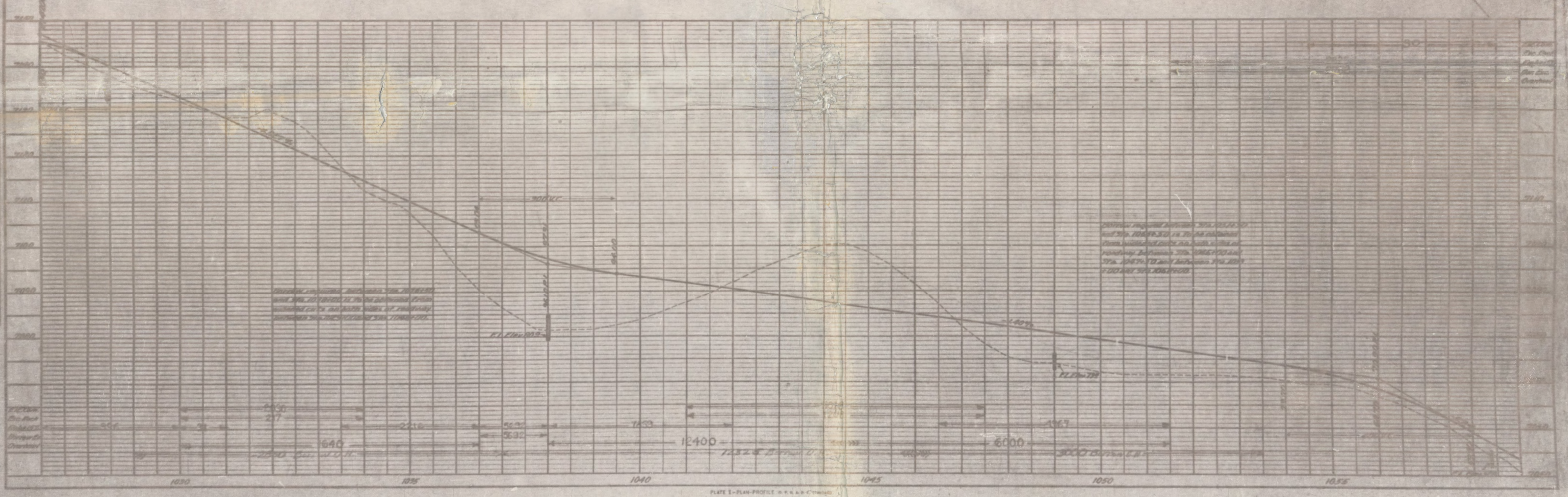


PLATE 1 - PLAN PROFILE OF ROAD
SCALE: 1" = 40' HORIZ. 1" = 40' VERT.

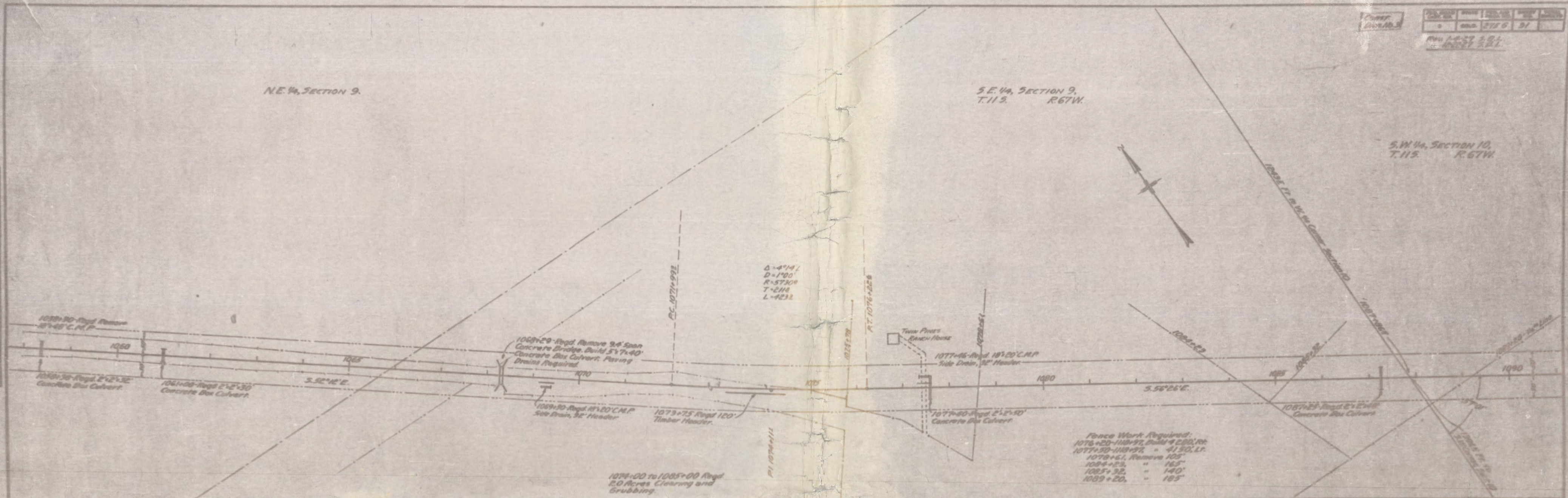
NE 1/4 SECTION 9.

SE 1/4 SECTION 9,
T.11S. R.67W.

SW 1/4 SECTION 10,
T.11S. R.67W.

DATE	SCALE	BY	CHECKED
1911	1" = 100'	J. H. ...	J. H. ...

DATE	SCALE	BY	CHECKED
1911	1" = 100'	J. H. ...	J. H. ...



Fence Work Required:
 1076+20-1084+72, 84M @ 2.50/Lt.
 1077+30-1084+72, " 4.150/Lt.
 1078+41, Remove 105'
 1084+23, " 165'
 1085+32, " 140'
 1089+20, " 185'

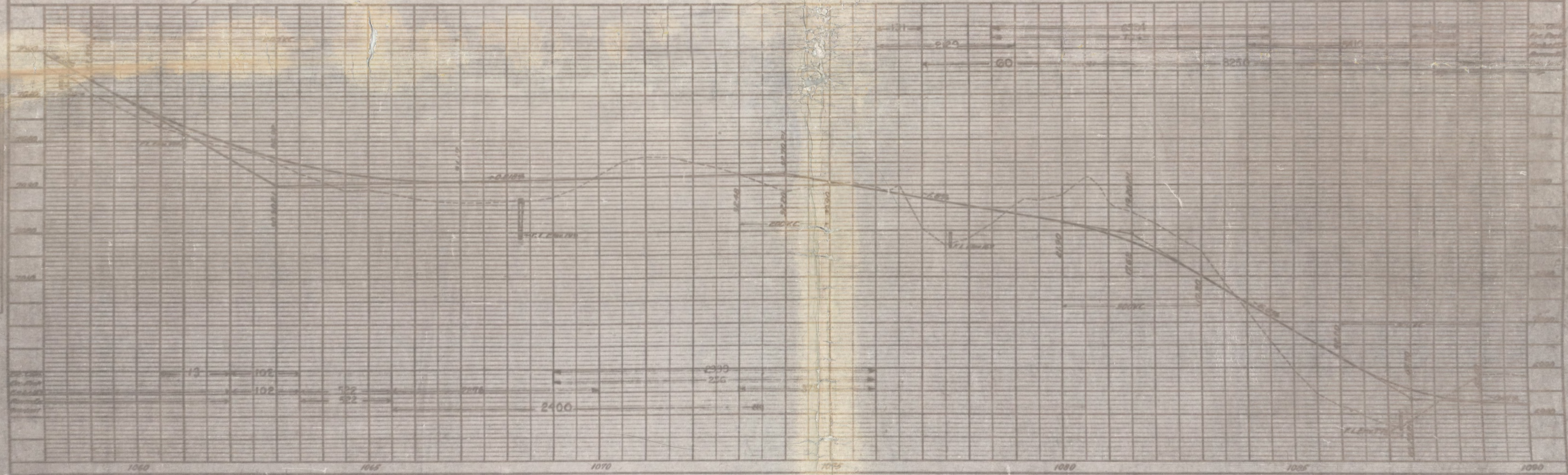


PLATE 1 - PLAN-PROFILE
 REPORT & EXHIBIT NO. 100



Fence Work Required:
 1103+00 - 100'
 1112+00 - 100'
 1118+00 - 100'

