

STATE	FED. AID PROJ. NO.	SHEET NO.	TOTAL SHEETS
COLORADO	296 B	1	1

Approved for Project
 July 14, 1932
 July 25, 1932

COLORADO STATE HIGHWAY DEPARTMENT

PLAN AND PROFILE OF PROPOSED FEDERAL AID PROJECT NO. 296 B STATE HIGHWAY NO. 1 PUEBLO COUNTY

INDEX OF SHEETS

129 1	Title Page
129 2	Summary
129 3-A	Details of Bridge Sta. 150+00
129 3	Details of Bridge Sta. 150+00
129 3a	Details of Bridge Sta. 150+00
129 3b	Details of Bridge Sta. 150+00
129 3c	Details of Bridge Sta. 150+00
129 3d	Details of Bridge Sta. 150+00
129 3e	Details of Bridge Sta. 150+00
129 3f	Details of Bridge Sta. 150+00
129 3g	Details of Bridge Sta. 150+00
129 3h	Details of Bridge Sta. 150+00
129 3i	Details of Bridge Sta. 150+00
129 3j	Details of Bridge Sta. 150+00
129 3k	Details of Bridge Sta. 150+00
129 3l	Details of Bridge Sta. 150+00
129 3m	Details of Bridge Sta. 150+00
129 3n	Details of Bridge Sta. 150+00
129 3o	Details of Bridge Sta. 150+00
129 3p	Details of Bridge Sta. 150+00
129 3q	Details of Bridge Sta. 150+00
129 3r	Details of Bridge Sta. 150+00
129 3s	Details of Bridge Sta. 150+00
129 3t	Details of Bridge Sta. 150+00
129 3u	Details of Bridge Sta. 150+00
129 3v	Details of Bridge Sta. 150+00
129 3w	Details of Bridge Sta. 150+00
129 3x	Details of Bridge Sta. 150+00
129 3y	Details of Bridge Sta. 150+00
129 3z	Details of Bridge Sta. 150+00

ORIGINAL PROJECT

CONSTRUCTION DIVISION NO. 1

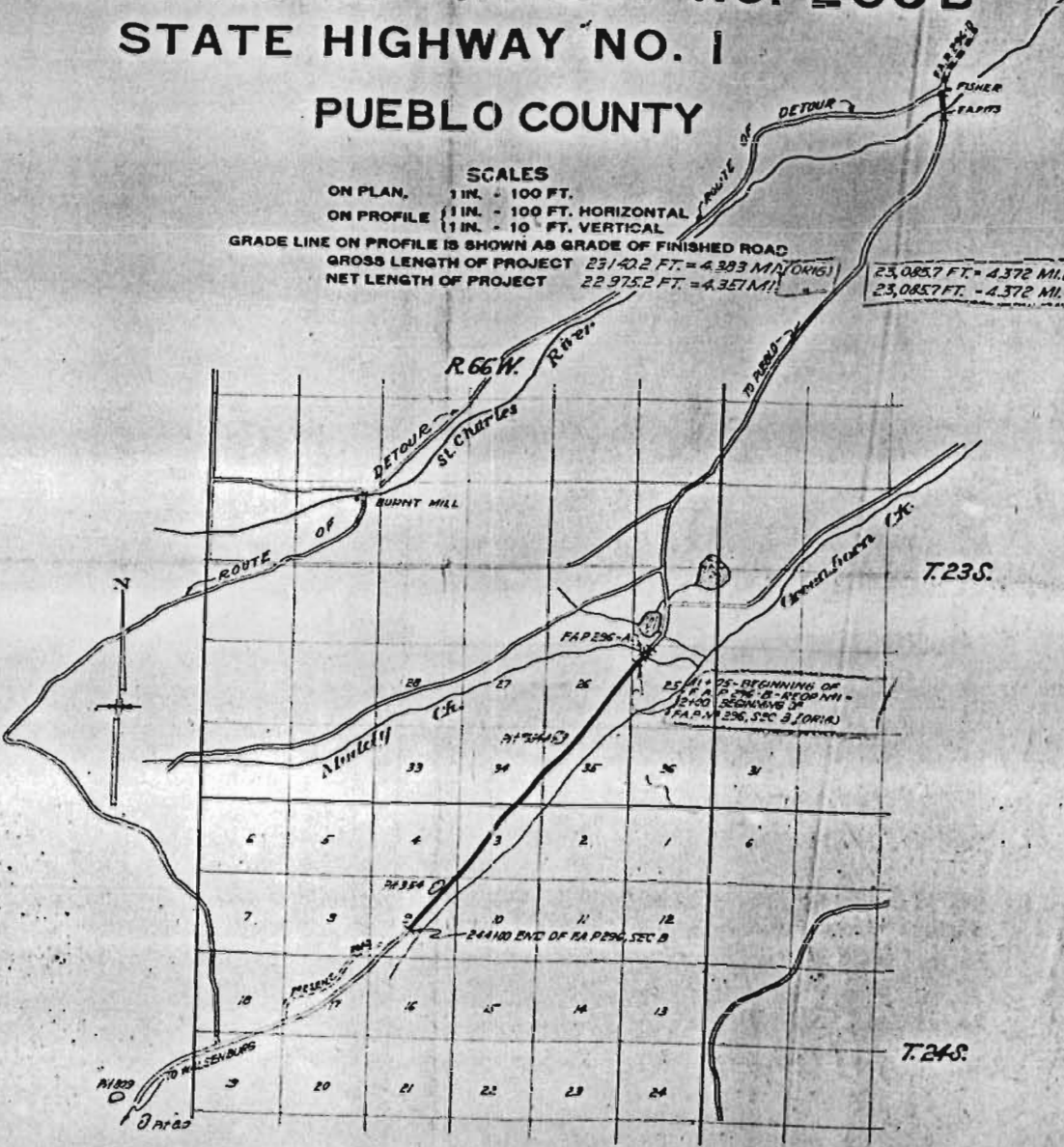
Sheet No. 1	Title Page
2	Typical Section and Summary
3-4	Details of Bridge Sta. 150+00
5	Standard Sections
6	Incor. Pipe Culverts M-121-A
7	Type A Paving Drain M-100-D
8	Conc. Box Culverts M-100-A
9	Double Conc. Box Culverts M-100-B
10	Conc. Box Culverts M-100-A
11	Type B Paving Drain M-103-C Spec. Rev.
12	Standard Wire Fence & Warner Posts M-24-E
13	Guard Fence M-20-E
14-21	Plan and Profile
22-27	Cross Sections

CONVENTIONAL SIGNS



SCALES
 ON PLAN, 1 IN. = 100 FT.
 ON PROFILE 1 IN. = 100 FT. HORIZONTAL
 1 IN. = 10 FT. VERTICAL
 GRADE LINE ON PROFILE IS SHOWN AS GRADE OF FINISHED ROAD
 GROSS LENGTH OF PROJECT 23,142.2 FT. = 4.383 MI. (ORIG.)
 NET LENGTH OF PROJECT 22,975.2 FT. = 4.357 MI.

23,085.7 FT. = 4.372 MI. (REV.)
 23,085.7 FT. = 4.372 MI.



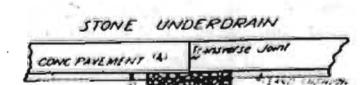
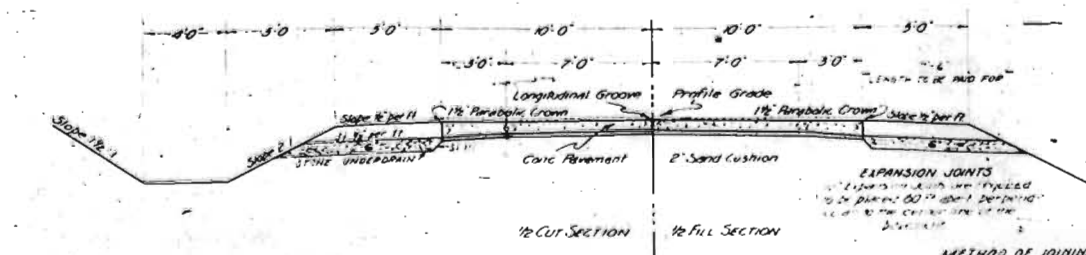
SCALE: ONE INCH = ONE MILE.

APPROVED FOR PROJECT
 July 14, 1932
 July 25, 1932
 Approved by
 [Signature]
 STATE HIGHWAY DEPARTMENT
 APPROVED FOR APPROVAL
 [Signature]
 STATE HIGHWAY DEPARTMENT
 APPROVED FOR APPROVAL
 [Signature]
 STATE HIGHWAY DEPARTMENT
 APPROVED FOR APPROVAL
 [Signature]
 STATE HIGHWAY DEPARTMENT

TYPICAL CROSS SECTION OF IMPROVEMENT AND SUMMARY OF QUANTITIES

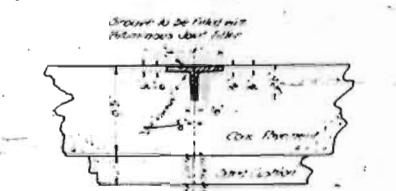
PER SHEET NO. 226-407
 DATE: July 19, 1931
 OCT. 2, 1931
 JUNE 23, 1932 F.M.D.
 CONTRACT 7-32 1931

TYPICAL CONCRETE PAVEMENT SECTION

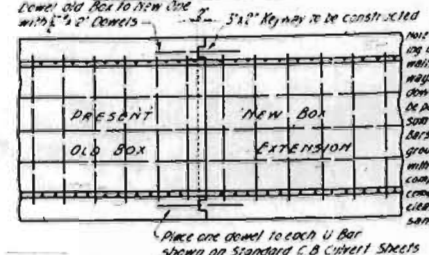


NOTE: Stone underdrains are to be placed on both sides of pavement directly opposite the transverse joint approximately 500 ft apart over the entire project. It is estimated that 40 pairs of these drains are required.

DETAIL OF LONGITUDINAL GROOVE FOR CONCRETE PAVEMENT



METHOD OF JOINING NEW BOX EXTENSION TO OLD CONCRETE BOX CULVERT



Place one dowel to each U Bar shown on Standard C.B. Culvert Sheets

GENERAL NOTES

This project is to be constructed in conformity with the Standard Specifications of the California State Highway Department, adopted January 1, 1930.
 All quantities on preliminary plans are to be considered approximate only.
 All curves are to be super-elevated to a maximum amount as determined by the formula $\frac{V^2}{15R}$ in which V = degree of curve and R = width of roadway in feet. Super-elevation of 0.0033 ft per foot of width is not to be exceeded. The inside edge of the pavement is to remain 1/4" below Profile Grade. The section is to be standard except that a flat crown is to be used. The change from standard to super-elevated section is to take place in 120' half on the curve and half on the approaching tangent.
 All roadway excavations required in constructing this project are to be obtained as indicated on the plans. Quantities involved beyond the limits of the ditch as shown in typical section, either noted on profile as "excavation" or as "excavation" shall be considered as "excavation" and shall be detailed as part of the original excavation at locations indicated on the plans. Also areas beyond the limits of the typical section as shown, are subject to change by the Engineer to fit Embankment requirements, as fully met at construction.
 All pole lines encroaching on Right of Way are to be moved by owners.
 The detour for this project shall be constructed by State Forces and shall be along the route indicated on the Title Sheet.

SUMMARY OF APPROXIMATE QUANTITIES

NO	ITEM	UNIT	ROADWAY	BRIDGES - STAS.		TOTAL
				1501	1751	
110	Removing 31 Structures	Ld Sum				
110	1/2" concrete cutting keyways	Ld Ft	30910			30910
120	Fence	Ld Ft	50291.5			50291.5
130	Unclassified Excavation	Cu Yd	1768			1768
140	Dry Rock	Cu Yd	113	5103		33329
140	Wet Rock	Cu Yd	113			113
140	Common	Cu Yd	2001			2001
180	Station Yard Overhaul	Sta Yd	65406			65406
180	Yard Mile Overhaul	Yd Mi	542			542
370	Concrete Pavement	Sq Yd	50874	85		50959.0
370	Sand Cushion	Cu Yd	3600	10		3610.0
440	Flitchboards	M Lb	16			16
440	Class "A" Concrete	Cu Yd	1021.5	3046		1326.5
47	Reinforcing Steel, Structural	Lb	92104	48064		139508
48	1/2" Corrugated Metal Culvert Pipe	Ld Ft	28	98658		98686
55	10" Ribbed Pipe	Ld Ft	102			102
55	10" Ribbed Pipe	Ld Ft	382			382
63	Precast Concrete Piling			2520		2520
63	Stone Underdrain		705			705
72	Wire Cable Guard Fence			200		200
75	Galv. Barbed Wire		40151			40151.0
80	Gates in	Each	19			19.0
80	Project Markers		1			1
80	Point of Way Markers		26			26
80	Sheet Copper	Lb		560		560
80	Removal of disused Bridge, Sta 1467	Ld Sum				
80	1/2" concrete cutting keyways	Ld Ft				
80	Trash Guards for 24" Siphons	Each	2			2
80	2" smooth metal Pipe with Covers	Ld Ft	100			100
80	Grillages for Pavement drains	Each	34			34
80	Drain Pipes	Each	8			8
80	24" Corc Metal Siphon Pipe	Ld Ft	57			57
80	Drilling Holes for dowels	Each	364			364
80	Pavement Drains	Each	8			8
40	Treated Bridge Timber	M Lb		0457		0457
40	Timber Piling	Ld Ft		2312		2312
40	1/2" Metal Pipe Stakes	Each		68		68
40	1/2" Rip Rap Screen in Wire Netting	Cu Yd		376		376
40	Remove & rebuild wire cable mesh fence	Ld Ft	450			450
40	Rip Rap	Cu Yd	25			25
40	Guard Fence Posts	Each	6			6
40	Lower 2" pipe under road	Lump Sum				
40	Hauling Spiral Riveted pipe to job	Ld Ft	93			93
40	Laying pipe	Ld Ft	93			93

Materials to be furnished and work to be done by State Forces. Build detour (in Fee Ad)

LIST OF STRUCTURES

LOCATION	DESCRIPTION	Remove Structure	Excavation Cu Yds	Culvert Pipe	Concrete Cu Yds	Steel Steel	Corrugated Metal Culvert Pipe Ld Ft	Siphon Pipe Ld Ft	2" Rib Pipe Ld Ft	4" Rib Pipe Ld Ft	6" Rib Pipe Ld Ft	8" Rib Pipe Ld Ft	10" Rib Pipe Ld Ft	12" Rib Pipe Ld Ft	14" Rib Pipe Ld Ft	16" Rib Pipe Ld Ft	18" Rib Pipe Ld Ft	20" Rib Pipe Ld Ft	24" Rib Pipe Ld Ft	30" Rib Pipe Ld Ft	36" Rib Pipe Ld Ft	42" Rib Pipe Ld Ft	48" Rib Pipe Ld Ft	54" Rib Pipe Ld Ft	60" Rib Pipe Ld Ft	66" Rib Pipe Ld Ft	72" Rib Pipe Ld Ft	78" Rib Pipe Ld Ft	84" Rib Pipe Ld Ft	90" Rib Pipe Ld Ft	96" Rib Pipe Ld Ft	102" Rib Pipe Ld Ft	108" Rib Pipe Ld Ft	114" Rib Pipe Ld Ft	120" Rib Pipe Ld Ft	126" Rib Pipe Ld Ft	132" Rib Pipe Ld Ft	138" Rib Pipe Ld Ft	144" Rib Pipe Ld Ft	150" Rib Pipe Ld Ft	156" Rib Pipe Ld Ft	162" Rib Pipe Ld Ft	168" Rib Pipe Ld Ft	174" Rib Pipe Ld Ft	180" Rib Pipe Ld Ft	186" Rib Pipe Ld Ft	192" Rib Pipe Ld Ft	198" Rib Pipe Ld Ft	204" Rib Pipe Ld Ft	210" Rib Pipe Ld Ft	216" Rib Pipe Ld Ft	222" Rib Pipe Ld Ft	228" Rib Pipe Ld Ft	234" Rib Pipe Ld Ft	240" Rib Pipe Ld Ft	246" Rib Pipe Ld Ft	252" Rib Pipe Ld Ft	258" Rib Pipe Ld Ft	264" Rib Pipe Ld Ft	270" Rib Pipe Ld Ft	276" Rib Pipe Ld Ft	282" Rib Pipe Ld Ft	288" Rib Pipe Ld Ft	294" Rib Pipe Ld Ft	300" Rib Pipe Ld Ft	306" Rib Pipe Ld Ft	312" Rib Pipe Ld Ft	318" Rib Pipe Ld Ft	324" Rib Pipe Ld Ft	330" Rib Pipe Ld Ft	336" Rib Pipe Ld Ft	342" Rib Pipe Ld Ft	348" Rib Pipe Ld Ft	354" Rib Pipe Ld Ft	360" Rib Pipe Ld Ft	366" Rib Pipe Ld Ft	372" Rib Pipe Ld Ft	378" Rib Pipe Ld Ft	384" Rib Pipe Ld Ft	390" Rib Pipe Ld Ft	396" Rib Pipe Ld Ft	402" Rib Pipe Ld Ft	408" Rib Pipe Ld Ft	414" Rib Pipe Ld Ft	420" Rib Pipe Ld Ft	426" Rib Pipe Ld Ft	432" Rib Pipe Ld Ft	438" Rib Pipe Ld Ft	444" Rib Pipe Ld Ft	450" Rib Pipe Ld Ft	456" Rib Pipe Ld Ft	462" Rib Pipe Ld Ft	468" Rib Pipe Ld Ft	474" Rib Pipe Ld Ft	480" Rib Pipe Ld Ft	486" Rib Pipe Ld Ft	492" Rib Pipe Ld Ft	498" Rib Pipe Ld Ft	504" Rib Pipe Ld Ft	510" Rib Pipe Ld Ft	516" Rib Pipe Ld Ft	522" Rib Pipe Ld Ft	528" Rib Pipe Ld Ft	534" Rib Pipe Ld Ft	540" Rib Pipe Ld Ft	546" Rib Pipe Ld Ft	552" Rib Pipe Ld Ft	558" Rib Pipe Ld Ft	564" Rib Pipe Ld Ft	570" Rib Pipe Ld Ft	576" Rib Pipe Ld Ft	582" Rib Pipe Ld Ft	588" Rib Pipe Ld Ft	594" Rib Pipe Ld Ft	600" Rib Pipe Ld Ft	606" Rib Pipe Ld Ft	612" Rib Pipe Ld Ft	618" Rib Pipe Ld Ft	624" Rib Pipe Ld Ft	630" Rib Pipe Ld Ft	636" Rib Pipe Ld Ft	642" Rib Pipe Ld Ft	648" Rib Pipe Ld Ft	654" Rib Pipe Ld Ft	660" Rib Pipe Ld Ft	666" Rib Pipe Ld Ft	672" Rib Pipe Ld Ft	678" Rib Pipe Ld Ft	684" Rib Pipe Ld Ft	690" Rib Pipe Ld Ft	696" Rib Pipe Ld Ft	702" Rib Pipe Ld Ft	708" Rib Pipe Ld Ft	714" Rib Pipe Ld Ft	720" Rib Pipe Ld Ft	726" Rib Pipe Ld Ft	732" Rib Pipe Ld Ft	738" Rib Pipe Ld Ft	744" Rib Pipe Ld Ft	750" Rib Pipe Ld Ft	756" Rib Pipe Ld Ft	762" Rib Pipe Ld Ft	768" Rib Pipe Ld Ft	774" Rib Pipe Ld Ft	780" Rib Pipe Ld Ft	786" Rib Pipe Ld Ft	792" Rib Pipe Ld Ft	798" Rib Pipe Ld Ft	804" Rib Pipe Ld Ft	810" Rib Pipe Ld Ft	816" Rib Pipe Ld Ft	822" Rib Pipe Ld Ft	828" Rib Pipe Ld Ft	834" Rib Pipe Ld Ft	840" Rib Pipe Ld Ft	846" Rib Pipe Ld Ft	852" Rib Pipe Ld Ft	858" Rib Pipe Ld Ft	864" Rib Pipe Ld Ft	870" Rib Pipe Ld Ft	876" Rib Pipe Ld Ft	882" Rib Pipe Ld Ft	888" Rib Pipe Ld Ft	894" Rib Pipe Ld Ft	900" Rib Pipe Ld Ft	906" Rib Pipe Ld Ft	912" Rib Pipe Ld Ft	918" Rib Pipe Ld Ft	924" Rib Pipe Ld Ft	930" Rib Pipe Ld Ft	936" Rib Pipe Ld Ft	942" Rib Pipe Ld Ft	948" Rib Pipe Ld Ft	954" Rib Pipe Ld Ft	960" Rib Pipe Ld Ft	966" Rib Pipe Ld Ft	972" Rib Pipe Ld Ft	978" Rib Pipe Ld Ft	984" Rib Pipe Ld Ft	990" Rib Pipe Ld Ft	996" Rib Pipe Ld Ft	1002" Rib Pipe Ld Ft	1008" Rib Pipe Ld Ft	1014" Rib Pipe Ld Ft	1020" Rib Pipe Ld Ft	1026" Rib Pipe Ld Ft	1032" Rib Pipe Ld Ft	1038" Rib Pipe Ld Ft	1044" Rib Pipe Ld Ft	1050" Rib Pipe Ld Ft	1056" Rib Pipe Ld Ft	1062" Rib Pipe Ld Ft	1068" Rib Pipe Ld Ft	1074" Rib Pipe Ld Ft	1080" Rib Pipe Ld Ft	1086" Rib Pipe Ld Ft	1092" Rib Pipe Ld Ft	1098" Rib Pipe Ld Ft	1104" Rib Pipe Ld Ft	1110" Rib Pipe Ld Ft	1116" Rib Pipe Ld Ft	1122" Rib Pipe Ld Ft	1128" Rib Pipe Ld Ft	1134" Rib Pipe Ld Ft	1140" Rib Pipe Ld Ft	1146" Rib Pipe Ld Ft	1152" Rib Pipe Ld Ft	1158" Rib Pipe Ld Ft	1164" Rib Pipe Ld Ft	1170" Rib Pipe Ld Ft	1176" Rib Pipe Ld Ft	1182" Rib Pipe Ld Ft	1188" Rib Pipe Ld Ft	1194" Rib Pipe Ld Ft	1200" Rib Pipe Ld Ft	1206" Rib Pipe Ld Ft	1212" Rib Pipe Ld Ft	1218" Rib Pipe Ld Ft	1224" Rib Pipe Ld Ft	1230" Rib Pipe Ld Ft	1236" Rib Pipe Ld Ft	1242" Rib Pipe Ld Ft	1248" Rib Pipe Ld Ft	1254" Rib Pipe Ld Ft	1260" Rib Pipe Ld Ft	1266" Rib Pipe Ld Ft	1272" Rib Pipe Ld Ft	1278" Rib Pipe Ld Ft	1284" Rib Pipe Ld Ft	1290" Rib Pipe Ld Ft	1296" Rib Pipe Ld Ft	1302" Rib Pipe Ld Ft	1308" Rib Pipe Ld Ft	1314" Rib Pipe Ld Ft	1320" Rib Pipe Ld Ft	1326" Rib Pipe Ld Ft	1332" Rib Pipe Ld Ft	1338" Rib Pipe Ld Ft	1344" Rib Pipe Ld Ft	1350" Rib Pipe Ld Ft	1356" Rib Pipe Ld Ft	1362" Rib Pipe Ld Ft	1368" Rib Pipe Ld Ft	1374" Rib Pipe Ld Ft	1380" Rib Pipe Ld Ft	1386" Rib Pipe Ld Ft	1392" Rib Pipe Ld Ft	1398" Rib Pipe Ld Ft	1404" Rib Pipe Ld Ft	1410" Rib Pipe Ld Ft	1416" Rib Pipe Ld Ft	1422" Rib Pipe Ld Ft	1428" Rib Pipe Ld Ft	1434" Rib Pipe Ld Ft	1440" Rib Pipe Ld Ft	1446" Rib Pipe Ld Ft	1452" Rib Pipe Ld Ft	1458" Rib Pipe Ld Ft	1464" Rib Pipe Ld Ft	1470" Rib Pipe Ld Ft	1476" Rib Pipe Ld Ft	1482" Rib Pipe Ld Ft	1488" Rib Pipe Ld Ft	1494" Rib Pipe Ld Ft	1500" Rib Pipe Ld Ft	1506" Rib Pipe Ld Ft	1512" Rib Pipe Ld Ft	1518" Rib Pipe Ld Ft	1524" Rib Pipe Ld Ft	1530" Rib Pipe Ld Ft	1536" Rib Pipe Ld Ft	1542" Rib Pipe Ld Ft	1548" Rib Pipe Ld Ft	1554" Rib Pipe Ld Ft	1560" Rib Pipe Ld Ft	1566" Rib Pipe Ld Ft	1572" Rib Pipe Ld Ft	1578" Rib Pipe Ld Ft	1584" Rib Pipe Ld Ft	1590" Rib Pipe Ld Ft	1596" Rib Pipe Ld Ft	1602" Rib Pipe Ld Ft	1608" Rib Pipe Ld Ft	1614" Rib Pipe Ld Ft	1620" Rib Pipe Ld Ft	1626" Rib Pipe Ld Ft	1632" Rib Pipe Ld Ft	1638" Rib Pipe Ld Ft	1644" Rib Pipe Ld Ft	1650" Rib Pipe Ld Ft	1656" Rib Pipe Ld Ft	1662" Rib Pipe Ld Ft	1668" Rib Pipe Ld Ft	1674" Rib Pipe Ld Ft	1680" Rib Pipe Ld Ft	1686" Rib Pipe Ld Ft	1692" Rib Pipe Ld Ft	1698" Rib Pipe Ld Ft	1704" Rib Pipe Ld Ft	1710" Rib Pipe Ld Ft	1716" Rib Pipe Ld Ft	1722" Rib Pipe Ld Ft	1728" Rib Pipe Ld Ft	1734" Rib Pipe Ld Ft	1740" Rib Pipe Ld Ft	1746" Rib Pipe Ld Ft	1752" Rib Pipe Ld Ft	1758" Rib Pipe Ld Ft	1764" Rib Pipe Ld Ft	1770" Rib Pipe Ld Ft	1776" Rib Pipe Ld Ft	1782" Rib Pipe Ld Ft	1788" Rib Pipe Ld Ft	1794" Rib Pipe Ld Ft	1800" Rib Pipe Ld Ft	1806" Rib Pipe Ld Ft	1812" Rib Pipe Ld Ft	1818" Rib Pipe Ld Ft	1824" Rib Pipe Ld Ft	1830" Rib Pipe Ld Ft	1836" Rib Pipe Ld Ft	1842" Rib Pipe Ld Ft	1848" Rib Pipe Ld Ft	1854" Rib Pipe Ld Ft	1860" Rib Pipe Ld Ft	1866" Rib Pipe Ld Ft	1872" Rib Pipe Ld Ft	1878" Rib Pipe Ld Ft	1884" Rib Pipe Ld Ft	1890" Rib Pipe Ld Ft	1896" Rib Pipe Ld Ft	1902" Rib Pipe Ld Ft	1908" Rib Pipe Ld Ft	1914" Rib Pipe Ld Ft	1920" Rib Pipe Ld Ft	1926" Rib Pipe Ld Ft	1932" Rib Pipe Ld Ft	1938" Rib Pipe Ld Ft	1944" Rib Pipe Ld Ft	1950" Rib Pipe Ld Ft	1956" Rib Pipe Ld Ft	1962" Rib Pipe Ld Ft	1968" Rib Pipe Ld Ft	1974" Rib Pipe Ld Ft	1980" Rib Pipe Ld Ft	1986" Rib Pipe Ld Ft	1992" Rib Pipe Ld Ft	1998" Rib Pipe Ld Ft	2004" Rib Pipe Ld Ft	2010" Rib Pipe Ld Ft	2016" Rib Pipe Ld Ft	2022" Rib Pipe Ld Ft	2028" Rib Pipe Ld Ft	2034" Rib Pipe Ld Ft	2040" Rib Pipe Ld Ft	2046" Rib Pipe Ld Ft	2052" Rib Pipe Ld Ft	2058" Rib Pipe Ld Ft	2064" Rib Pipe Ld Ft	2070" Rib Pipe Ld Ft	2076" Rib Pipe Ld Ft	2082" Rib Pipe Ld Ft	2088" Rib Pipe Ld Ft	2094" Rib Pipe Ld Ft	2100" Rib Pipe Ld Ft	2106" Rib Pipe Ld Ft	2112" Rib Pipe Ld Ft	2118" Rib Pipe Ld Ft	2124" Rib Pipe Ld Ft	2130" Rib Pipe Ld Ft	2136" Rib Pipe Ld Ft	2142" Rib Pipe Ld Ft	2148" Rib Pipe Ld Ft	2154" Rib Pipe Ld Ft	2160" Rib Pipe Ld Ft	2166" Rib Pipe Ld Ft	2172" Rib Pipe Ld Ft	2178" Rib Pipe Ld Ft	2184" Rib Pipe Ld Ft	2190" Rib Pipe Ld Ft	2196" Rib Pipe Ld Ft	2202" Rib Pipe Ld Ft	2208" Rib Pipe Ld Ft	2214" Rib Pipe Ld Ft	2220" Rib Pipe Ld Ft	2226" Rib Pipe Ld Ft	2232" Rib Pipe Ld Ft	2238" Rib Pipe Ld Ft	2244" Rib Pipe Ld Ft	2250" Rib Pipe Ld Ft	2256" Rib Pipe Ld Ft	2262" Rib Pipe Ld Ft	2268" Rib Pipe Ld Ft	2274" Rib Pipe Ld Ft	2280" Rib Pipe Ld Ft	2286" Rib Pipe Ld Ft	2292" Rib Pipe Ld Ft	2298" Rib Pipe Ld Ft	2304" Rib Pipe Ld Ft	2310" Rib Pipe Ld Ft	2316" Rib Pipe Ld Ft	2322" Rib Pipe Ld Ft	2328" Rib Pipe Ld Ft	2334" Rib Pipe Ld Ft	2340" Rib Pipe Ld Ft	2346" Rib Pipe Ld Ft	2352" Rib Pipe Ld Ft	2358" Rib Pipe Ld Ft	2364" Rib Pipe Ld Ft	2370" Rib Pipe Ld Ft	2376" Rib Pipe Ld Ft	2382" Rib Pipe Ld Ft	2388" Rib Pipe Ld Ft	2394" Rib Pipe Ld Ft	2400" Rib Pipe Ld Ft	2406" Rib Pipe Ld Ft	2412" Rib Pipe Ld Ft	2418" Rib Pipe Ld Ft	2424" Rib Pipe Ld Ft	2430" Rib Pipe Ld Ft	2436" Rib Pipe Ld Ft	2442" Rib Pipe Ld Ft	2448" Rib Pipe Ld Ft	2454" Rib Pipe Ld Ft	2460" Rib Pipe Ld Ft	2466" Rib Pipe Ld Ft	2472" Rib Pipe Ld Ft	2478" Rib Pipe Ld Ft	2484" Rib Pipe Ld Ft	2490" Rib Pipe Ld Ft	2496" Rib Pipe Ld Ft	2502" Rib Pipe Ld Ft	2508" Rib Pipe Ld Ft	2514" Rib Pipe Ld Ft	2520" Rib Pipe Ld Ft	2526" Rib Pipe Ld Ft	2532" Rib Pipe Ld Ft</
----------	-------------	------------------	-------------------	--------------	-----------------	-------------	-------------------------------------	-------------------	-------------------	-------------------	-------------------	-------------------	--------------------	--------------------	--------------------	--------------------	--------------------	--------------------	--------------------	--------------------	--------------------	--------------------	--------------------	--------------------	--------------------	--------------------	--------------------	--------------------	--------------------	--------------------	--------------------	---------------------	---------------------	---------------------	---------------------	---------------------	---------------------	---------------------	---------------------	---------------------	---------------------	---------------------	---------------------	---------------------	---------------------	---------------------	---------------------	---------------------	---------------------	---------------------	---------------------	---------------------	---------------------	---------------------	---------------------	---------------------	---------------------	---------------------	---------------------	---------------------	---------------------	---------------------	---------------------	---------------------	---------------------	---------------------	---------------------	---------------------	---------------------	---------------------	---------------------	---------------------	---------------------	---------------------	---------------------	---------------------	---------------------	---------------------	---------------------	---------------------	---------------------	---------------------	---------------------	---------------------	---------------------	---------------------	---------------------	---------------------	---------------------	---------------------	---------------------	---------------------	---------------------	---------------------	---------------------	---------------------	---------------------	---------------------	---------------------	---------------------	---------------------	---------------------	---------------------	---------------------	---------------------	---------------------	---------------------	---------------------	---------------------	---------------------	---------------------	---------------------	---------------------	---------------------	---------------------	---------------------	---------------------	---------------------	---------------------	---------------------	---------------------	---------------------	---------------------	---------------------	---------------------	---------------------	---------------------	---------------------	---------------------	---------------------	---------------------	---------------------	---------------------	---------------------	---------------------	---------------------	---------------------	---------------------	---------------------	---------------------	---------------------	---------------------	---------------------	---------------------	---------------------	---------------------	---------------------	---------------------	---------------------	---------------------	---------------------	---------------------	---------------------	---------------------	---------------------	---------------------	---------------------	---------------------	---------------------	---------------------	---------------------	---------------------	---------------------	---------------------	---------------------	---------------------	---------------------	---------------------	---------------------	---------------------	---------------------	---------------------	---------------------	---------------------	---------------------	---------------------	---------------------	---------------------	---------------------	---------------------	---------------------	----------------------	----------------------	----------------------	----------------------	----------------------	----------------------	----------------------	----------------------	----------------------	----------------------	----------------------	----------------------	----------------------	----------------------	----------------------	----------------------	----------------------	----------------------	----------------------	----------------------	----------------------	----------------------	----------------------	----------------------	----------------------	----------------------	----------------------	----------------------	----------------------	----------------------	----------------------	----------------------	----------------------	----------------------	----------------------	----------------------	----------------------	----------------------	----------------------	----------------------	----------------------	----------------------	----------------------	----------------------	----------------------	----------------------	----------------------	----------------------	----------------------	----------------------	----------------------	----------------------	----------------------	----------------------	----------------------	----------------------	----------------------	----------------------	----------------------	----------------------	----------------------	----------------------	----------------------	----------------------	----------------------	----------------------	----------------------	----------------------	----------------------	----------------------	----------------------	----------------------	----------------------	----------------------	----------------------	----------------------	----------------------	----------------------	----------------------	----------------------	----------------------	----------------------	----------------------	----------------------	----------------------	----------------------	----------------------	----------------------	----------------------	----------------------	----------------------	----------------------	----------------------	----------------------	----------------------	----------------------	----------------------	----------------------	----------------------	----------------------	----------------------	----------------------	----------------------	----------------------	----------------------	----------------------	----------------------	----------------------	----------------------	----------------------	----------------------	----------------------	----------------------	----------------------	----------------------	----------------------	----------------------	----------------------	----------------------	----------------------	----------------------	----------------------	----------------------	----------------------	----------------------	----------------------	----------------------	----------------------	----------------------	----------------------	----------------------	----------------------	----------------------	----------------------	----------------------	----------------------	----------------------	----------------------	----------------------	----------------------	----------------------	----------------------	----------------------	----------------------	----------------------	----------------------	----------------------	----------------------	----------------------	----------------------	----------------------	----------------------	----------------------	----------------------	----------------------	----------------------	----------------------	----------------------	----------------------	----------------------	----------------------	----------------------	----------------------	----------------------	----------------------	----------------------	----------------------	----------------------	----------------------	----------------------	----------------------	----------------------	----------------------	----------------------	----------------------	----------------------	----------------------	----------------------	----------------------	----------------------	----------------------	----------------------	----------------------	----------------------	----------------------	----------------------	----------------------	----------------------	----------------------	----------------------	----------------------	----------------------	----------------------	----------------------	----------------------	----------------------	----------------------	----------------------	----------------------	----------------------	----------------------	----------------------	----------------------	----------------------	----------------------	----------------------	----------------------	----------------------	----------------------	----------------------	----------------------	----------------------	----------------------	----------------------	----------------------	----------------------	----------------------	----------------------	----------------------	----------------------	----------------------	----------------------	----------------------	----------------------	----------------------	----------------------	----------------------	----------------------	----------------------	----------------------	----------------------	----------------------	----------------------	----------------------	----------------------	----------------------	----------------------	----------------------	----------------------	----------------------	----------------------	----------------------	----------------------	----------------------	----------------------	----------------------	----------------------	----------------------	----------------------	----------------------	----------------------	----------------------	----------------------	----------------------	----------------------	------------------------

REV	DATE	BY	CHKD	APP'D	DESCRIPTION
1					
2					

REV 6-16-30 - P.M.D.
REV 6-30-32 - R.F.

11-75 - Reqd. Project Marker
11-76 - Reqd. 2" Type B Paving Drains

NOTE: Fencing, Gates, & Right-of-way markers required are tabulated on sheet No 2

3572L
D11
T 2518
L 5038
R 5728P

35-00 - 6" x 2" x 40' Concrete Box Culv in place. Reqd. to remove headwalls and extend 5' on each side. Also required 2" Type B Paving Drains

STA. 11+75 - BEGINNING OF F.A.P. 296 - BR. #1
END OF F.A.P. 296 - AR. #1 = STA. 12+00 OF ORIGINAL PROJECT

15-97 - Reqd. 35" x 15" x 30' Concrete Box Culv in place. Reqd. to remove headwalls and extend 5' on each side. Also reqd. to remove and relay 2' x 15" x 28' C.M.P. Side Drains. Also reqd. to build diversion box to replace one torn out during construction. (C.P.P. Letter 4-5-32)

19-55 Reqd. Remove & Relay Side Drain. 458x20 Timber Header.

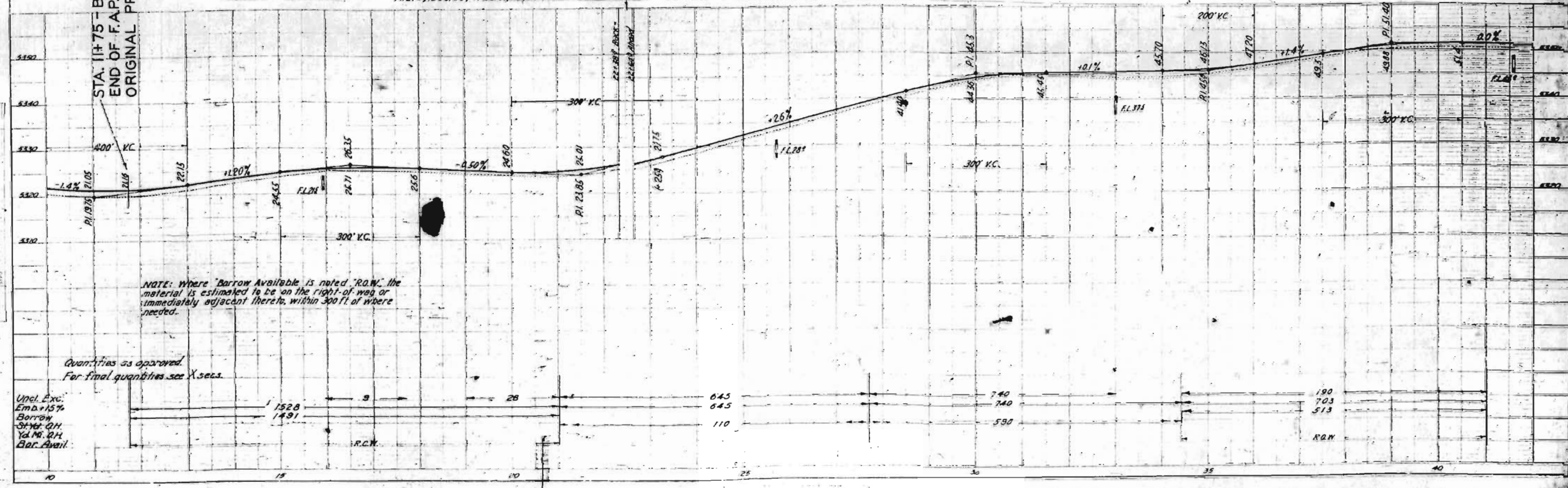
25-77 - Remove 24" x 36" C.M.P. Culv. Reqd. 2' x 46" CBC. 15" x 20' Header.

27-80 Reqd. Remove & Relay Side Drain. 45x20 Header.

40-80 Reqd. 45x20 Timber Header

N.E. 4, Sec. 26, T. 23 S., R. 66 W.

S.E. 4, Sec. 26



NOTE: Where "Borrow Available" is noted "R.O.W." the material is estimated to be on the right-of-way or immediately adjacent thereto, within 300 ft. of where needed.

Quantities as approved
For final quantities see X-secs.

Uncl. Exc.
Emd. + 15%
Borrow
Sta. No. 011
Vol. No. 011
Bar Avail.

1528	9	28	645	740	190
1491			645	740	703
			110	590	513
					R.O.W.

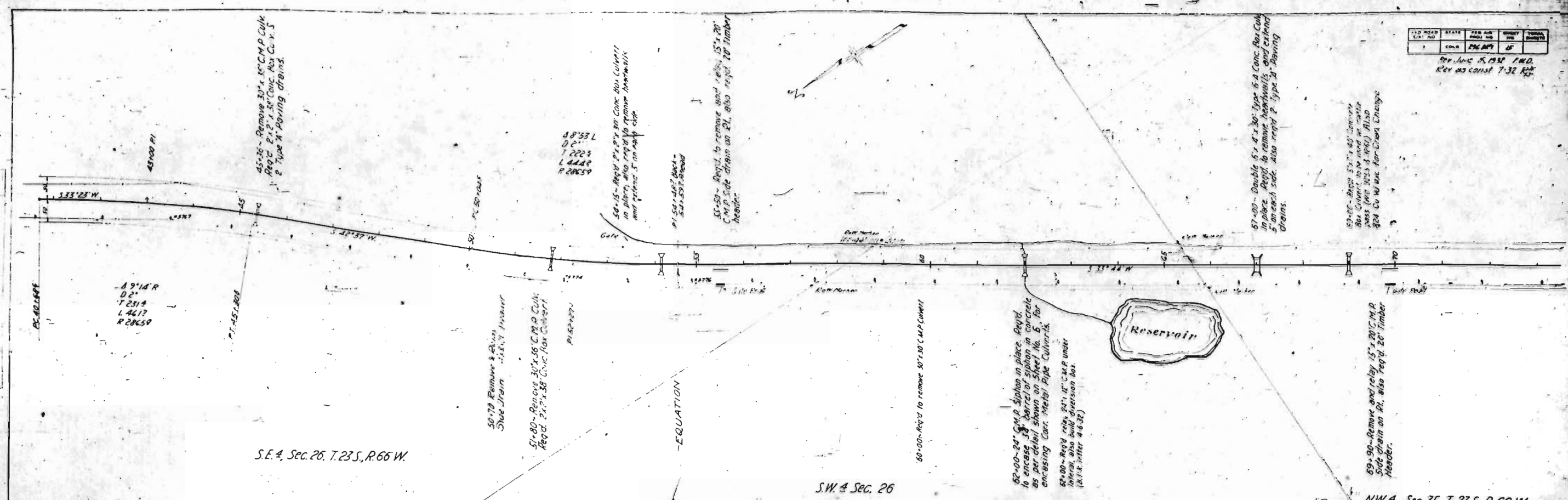
PLAN

PROFILE

STATE	SECTION	DATE	BY	REVISION
IND. <td>1</td> <td>1938</td> <td>J.M.D.</td> <td></td>	1	1938	J.M.D.	
				Rev as const 7-32-38

Rev. J.M.D. 7-32-38
Rev as const 7-32-38

PLAN

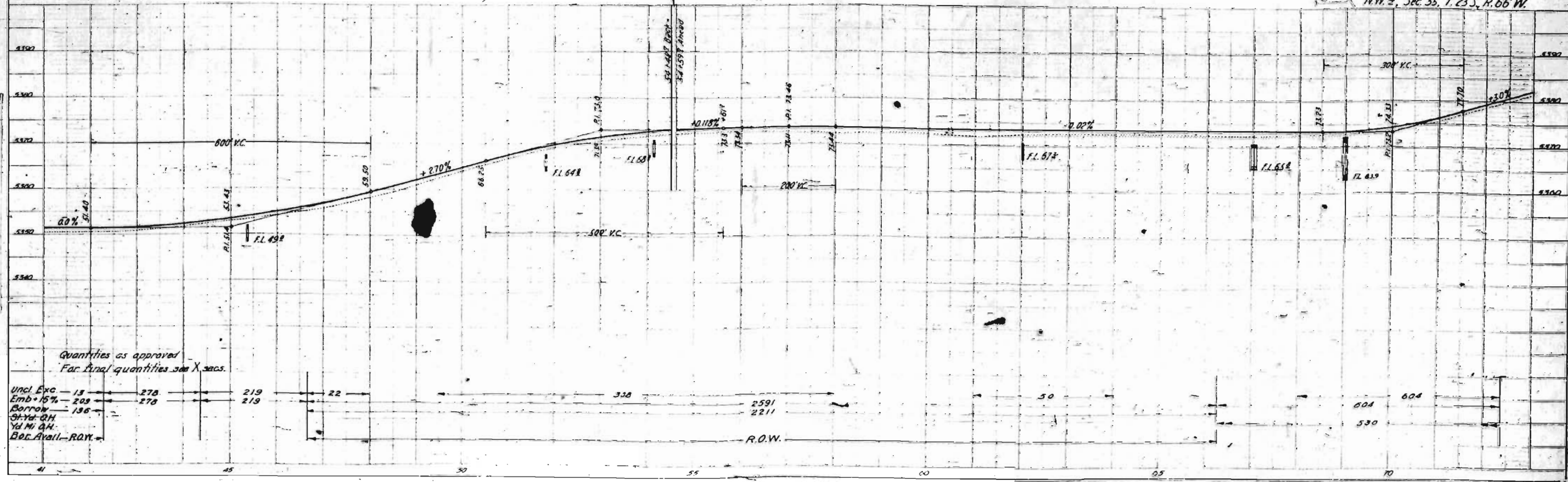


S.E. 4, Sec. 26, T. 23 S., R. 66 W.

SW 4 Sec. 26

N.W. 4, Sec. 35, T. 23 S., R. 66 W.

PROFILE



Quantities as approved
For final quantities see X. specs.

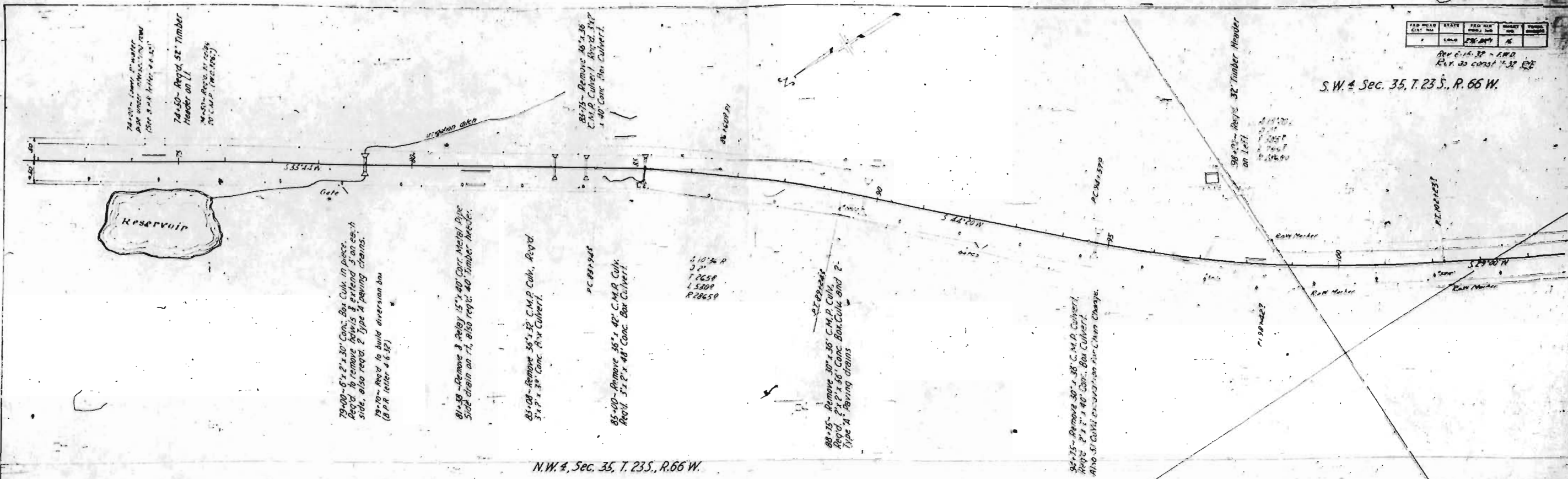
Uncl. Exc - 15
Emb. 15% - 209
Borrow - 136
Gravel - 211
Yd. M. Gravel - 211
Bec. Avail. - R.O.W.



FED. ROAD DIST. NO.	STATE	FED. AID DIST. NO.	PROJECT NO.	SECTION
1	LOUISIANA	1	1	1

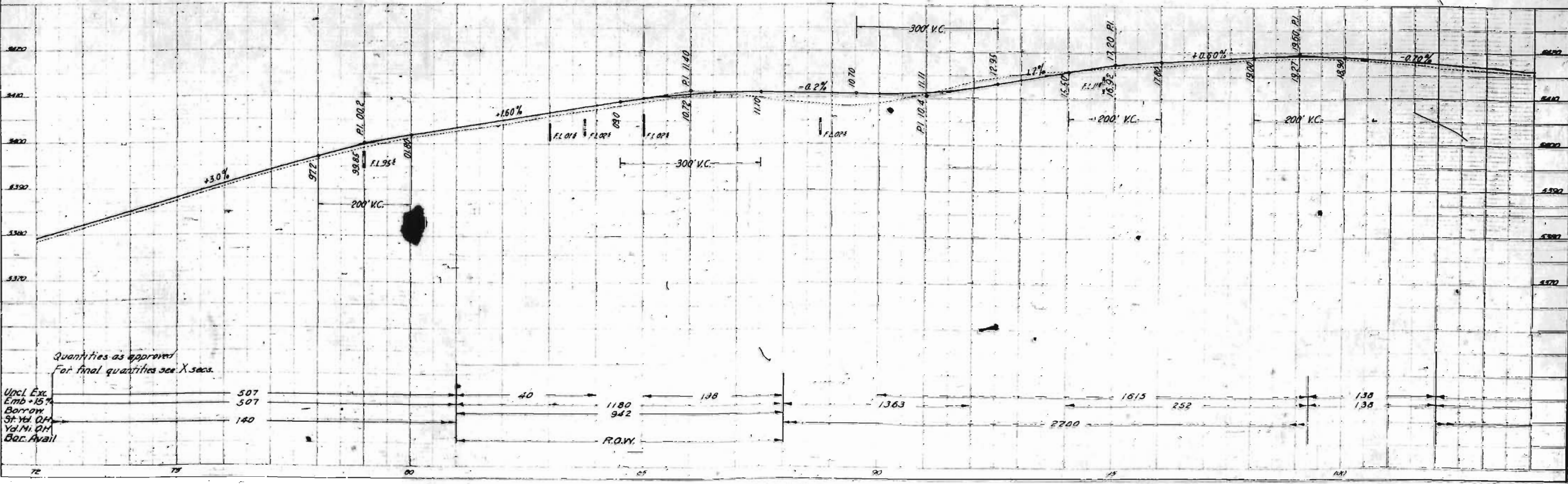
Rev. 6-14-37 - E.M.D.
 Rev. 10-10-37 - E.E.
 S.W. 4 Sec. 35, T. 23 S., R. 66 W.

PLAN
 SCALE 1" = 40'



N.W. 4, Sec. 35, T. 23 S., R. 66 W.

PROFILE
 SCALE 1" = 10'



PLAN
 DATE: 1932
 SHEET NO. 7

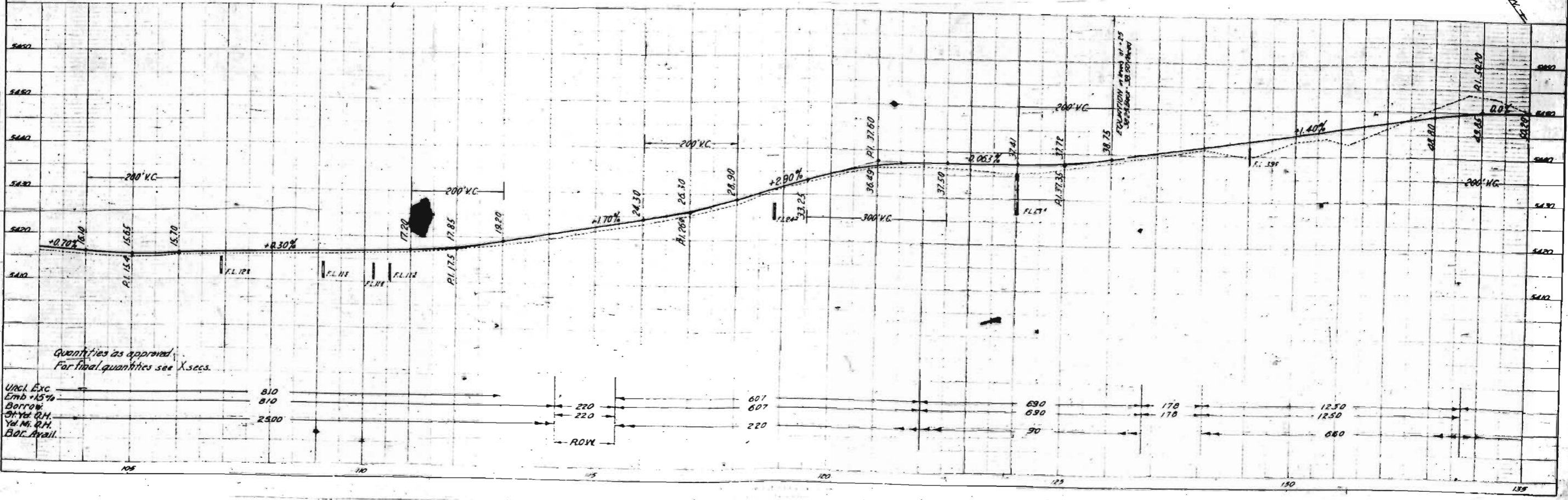
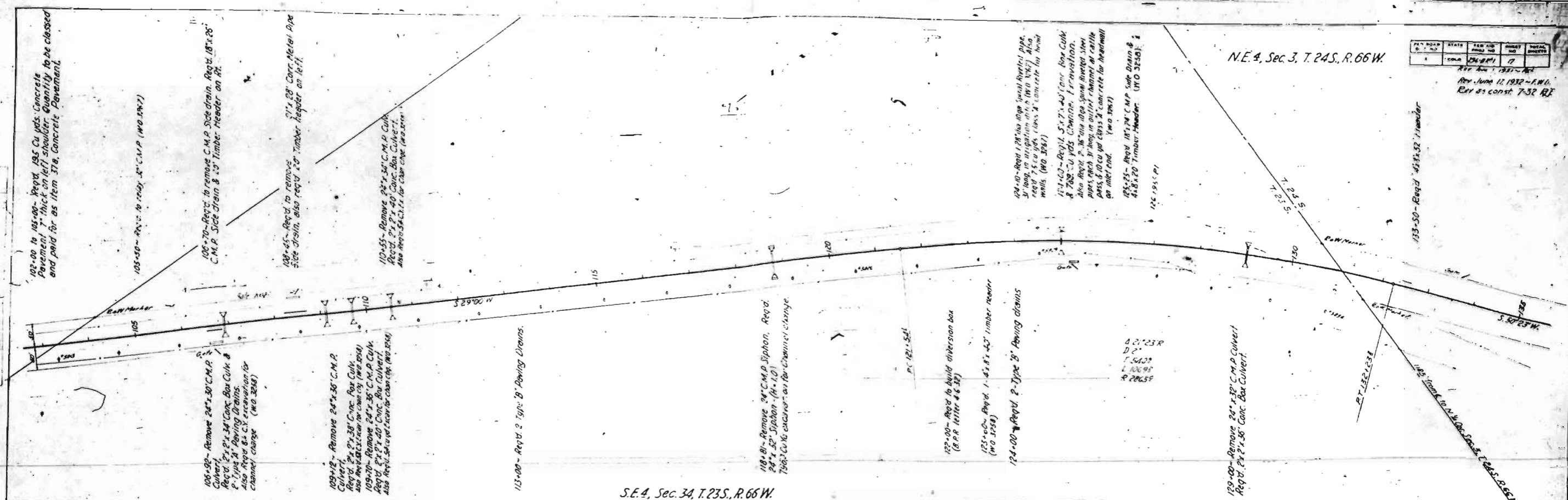
PROFILE
 DATE: 1932
 SHEET NO. 7

STATE	FED. AID PROJ. NO.	PROJECT NO.	TOTAL LENGTH
MO.	2648(F)	7	

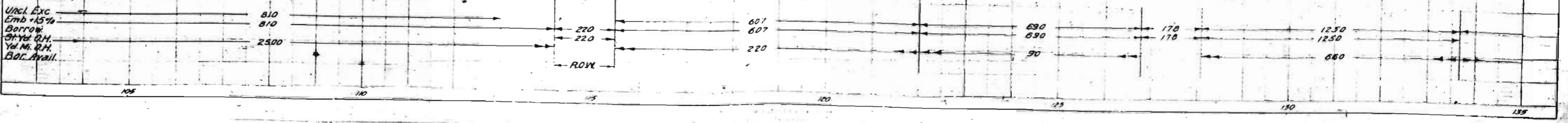
Rev. June 12, 1932 - F.W.O.
 Est. as const. 7-32 R.E.

N.E. 4, Sec. 3, T. 24S., R. 66W.

S.E. 4, Sec. 34, T. 23S., R. 66W.



Quantities as approved
 For final quantities see X-secs.

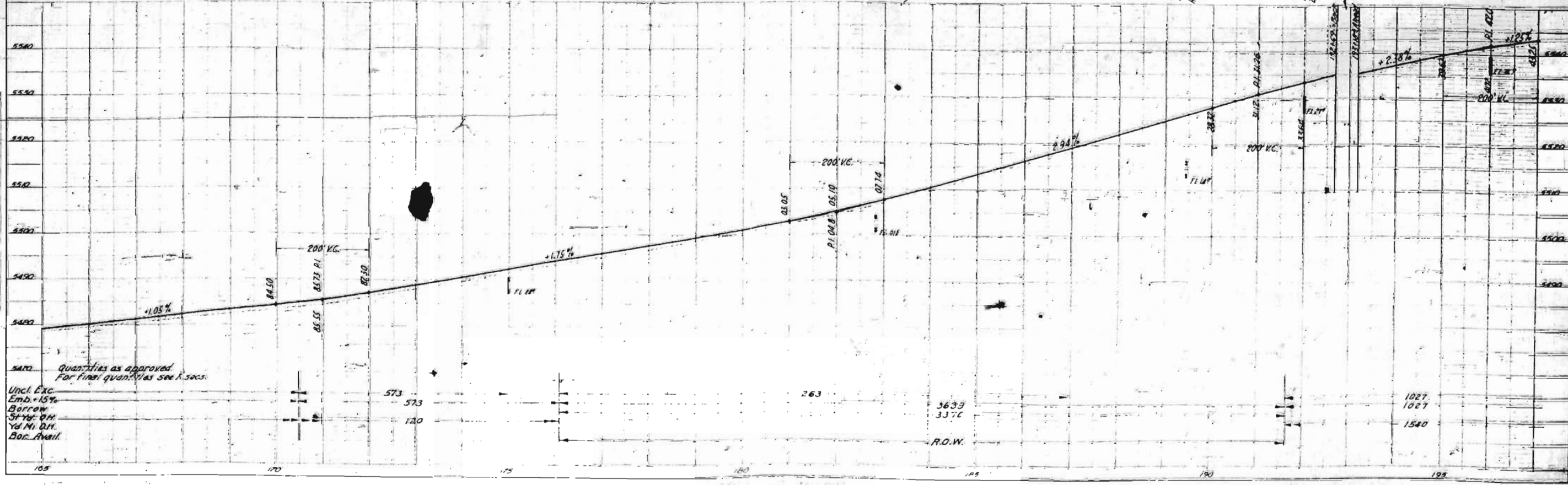
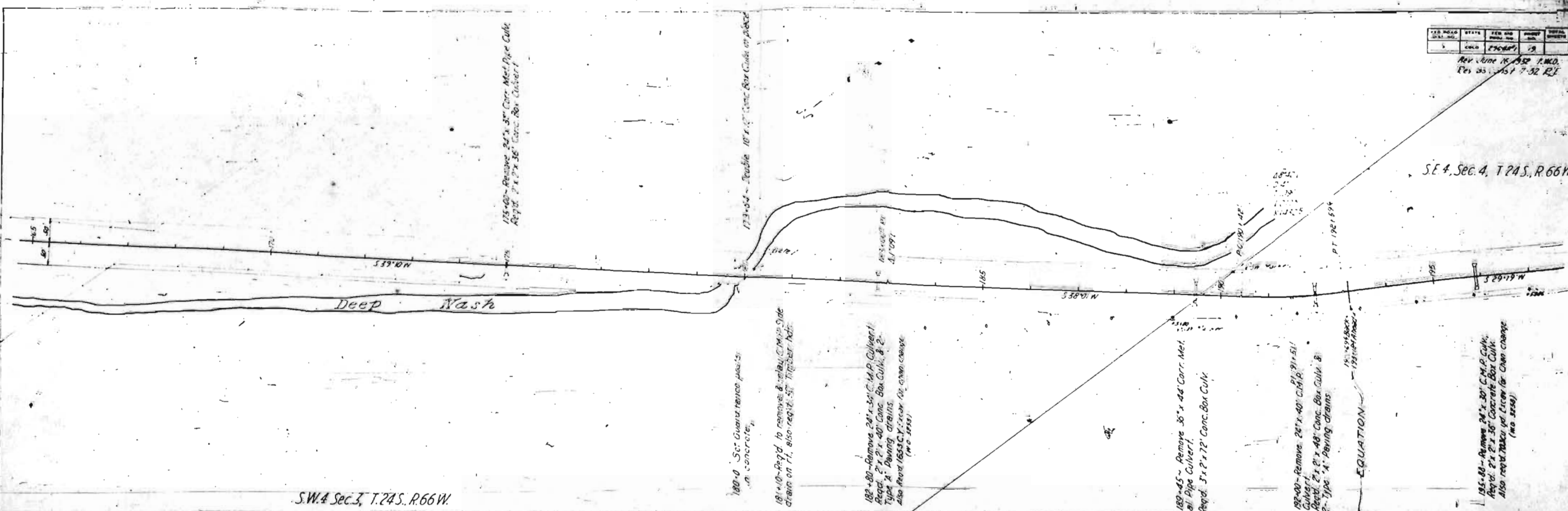


NO.	DATE	BY	REVISION
1	11/15/50	J.M.C.	PRELIMINARY
2	1/10/51	J.M.C.	REVISED

Rev. Date 11/15/50 J.M.C.
Rev. 01/10/51 J.M.C.

SE 4, Sec. 4, T. 24 S., R. 66 W.

SW 4 Sec. 3, T. 24 S., R. 66 W.

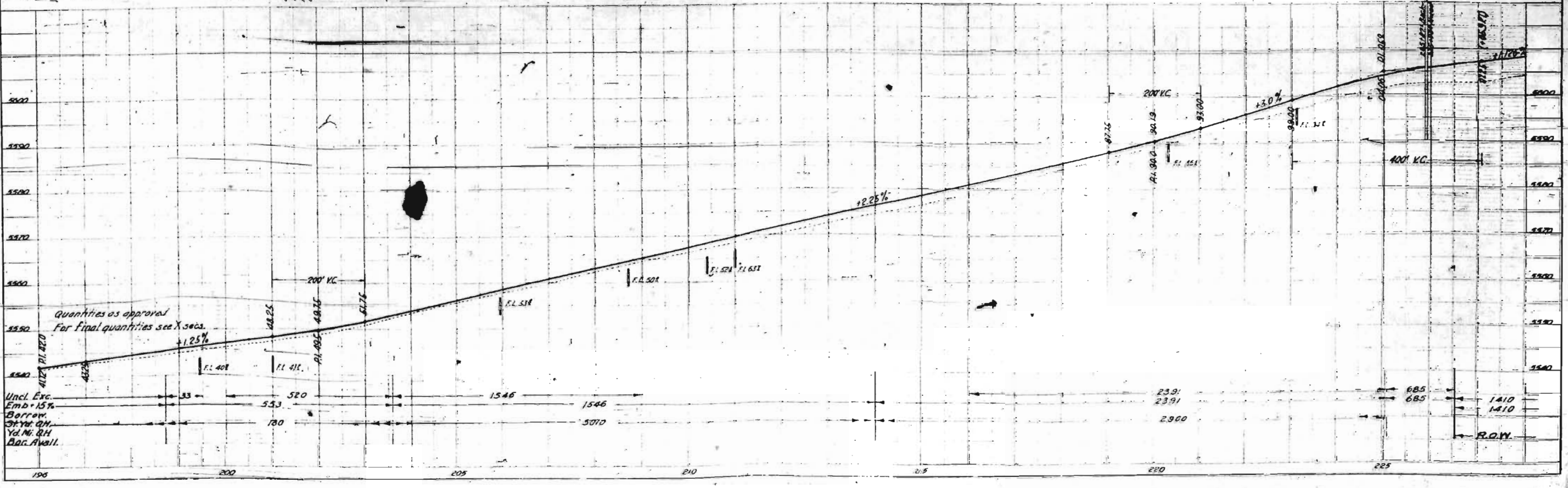
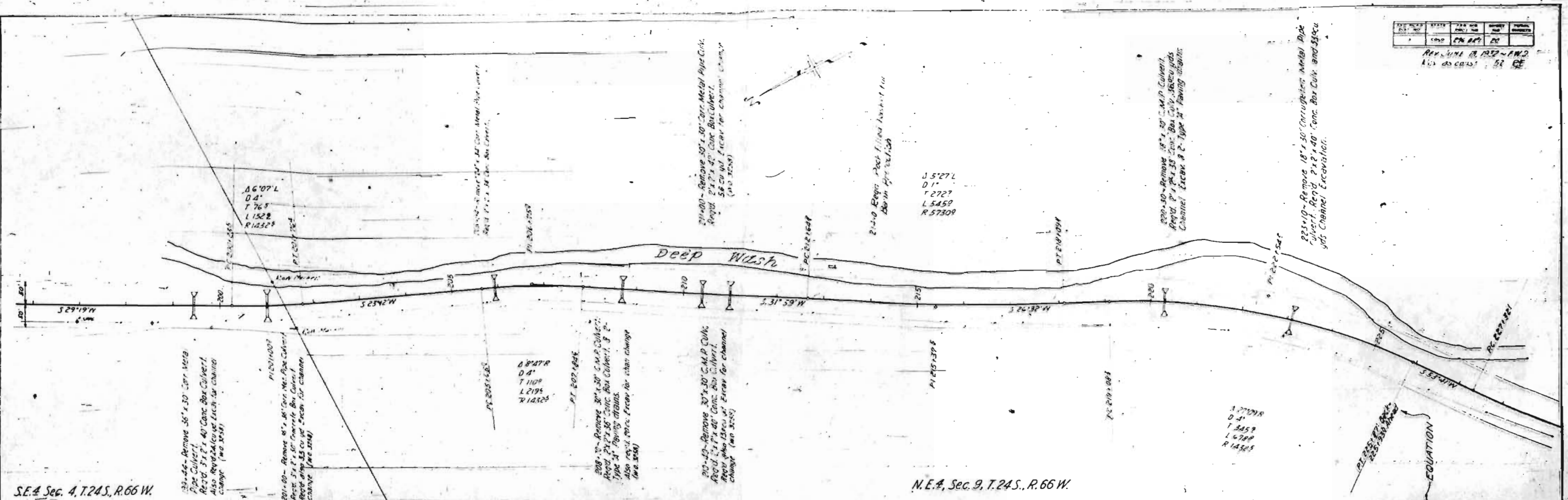


ITEM NO.	QUANTITY	UNIT	AMOUNT
1	58	cu yds	58

RESUME R. 132-142
 1/15/05 58 CE

PLAN	DATE	BY	CHKD

PROFILE	DATE	BY	CHKD



NO.	DATE	BY	REVISION
1	6-18-51	J.M.D.	REVISED

Rev 6-18-51 J.M.D.
Rev as const 7-32-51

S.E. 4, Sec. 9, T. 24 S., R. 66 W.

