

AS BUILT SAQ

Oversight / NHS

FHWA REGION VIII OVERSIGHT? NO YES
 NATIONAL HIGHWAY SYSTEM? NO YES

DEPARTMENT OF TRANSPORTATION
 STATE OF COLORADO

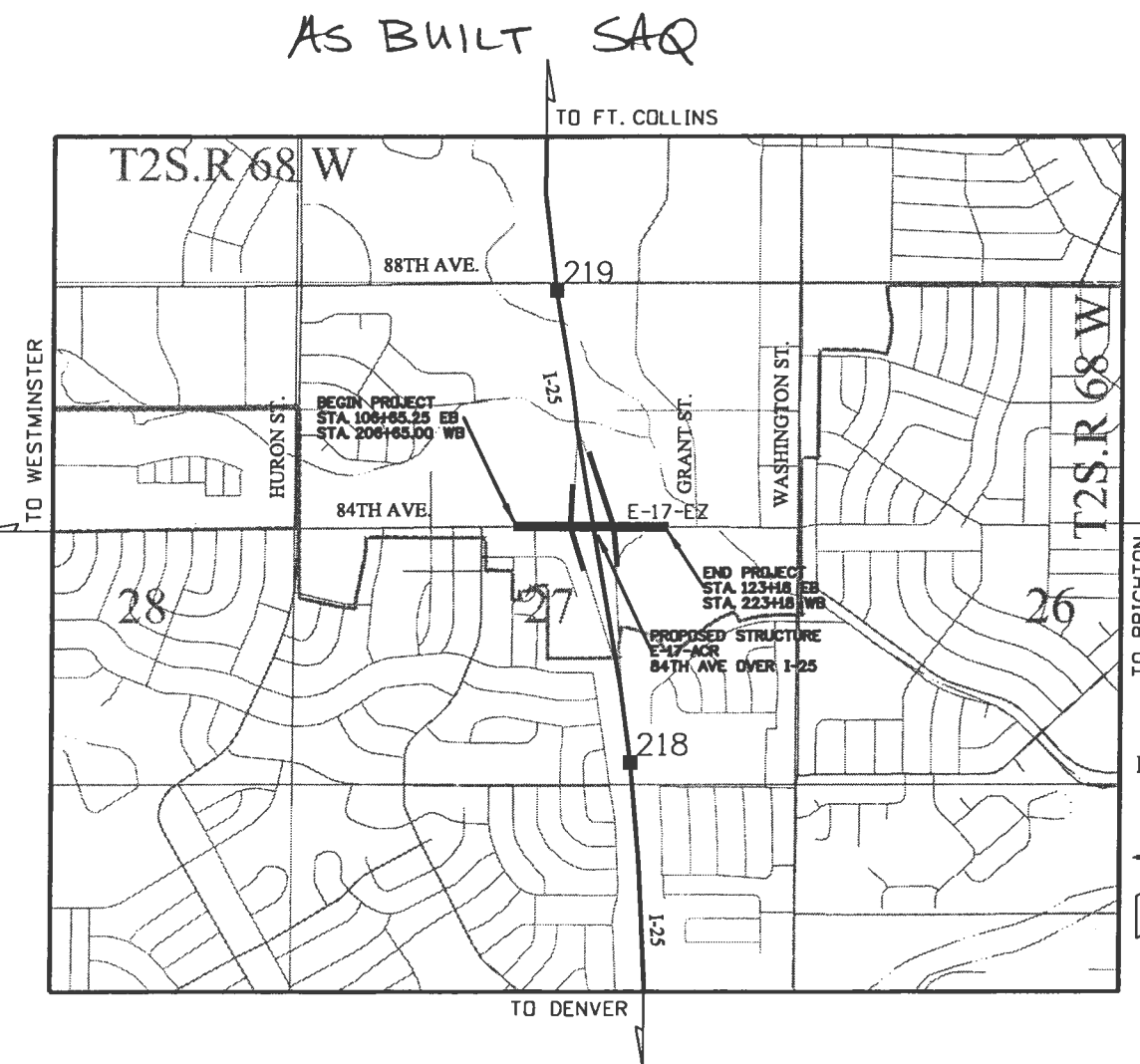
Related Projects:
 P. E. UNDER PROJECT: N/A
 Project Number: N/A
 Project Code:
 R.O.W. Projects:
 R.O.W. Project Description: XXXXXXXXXXXXXXXX

HIGHWAY CONSTRUCTION BID PLANS OF PROPOSED
 FEDERAL AID PROJECT NO. FBR 0253-209
 STATE HIGHWAY NO. 25
 ADAMS COUNTY
 CONSTRUCTION PROJECT CODE NO. 17535

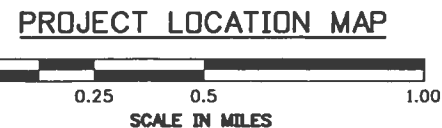
TABULATION OF LENGTH & DESIGN DATA

STATION	FEET		MAJOR STR.
	SH 25	84TH AVE	
WEST APPROACH TO PROJECT (CONST. SIGNING) 84TH AVE. AT APPROX. PECOS ST.			
BEGIN FBR 0253-0209 = STA. 106+65.25 84TH AVE. EASTBOUND		457.79	
STA. 111+23.04 84TH AVE. BEGIN STRUCTURE NO. E-17-ACR			297.58
STA. 114+20.62 END STRUCTURE NO. E-17-ACR		683.54	
END FBR 0253-209 = STA. 123+18 84TH AVE EASTBOUND			
EAST APPROACH TO PROJECT (CONST. SIGNING) 84TH AVE. AT APPROX. WASHINGTON ST.			
BEGIN FBR 0253-209 = (CONST. SIGNING/PHASING) M.P. 217.50 ±			
END FBR 0253-209 = (CONST. SIGNING/PHASING) M.P. 219.50 ±	10,560.00		
TOTAL	10,560.00	1141.330	297.58
SUMMARY OF PROJECT LENGTH		FEET	MILES
ROADWAY (NET LENGTH)		1,141.33	0.216
MAJOR STRUCTURE		297.58	0.056
PROJECT GROSS LENGTH		1,438.91	0.273

DESIGN DATA	SH-25	84TH AVE
MINIMUM RADIUS OF CURVE	N/A	1039 FT
MAXIMUM GRADE	4%	7%
MINIMUM S.S.D. HORIZONTAL	>645	>360
MINIMUM S.S.D. VERTICAL	>645	>360
MAXIMUM DESIGN SPEED	65 MPH	40 MPH
2029 DESIGN TRAFFIC		
DHV	16,598	3,100
ADT	207,480	41,400
TRUCK %	10.40%	6.00%
CLEAR ZONE DISTANCE (TANGENT)	30 FT	N/A
CLEAR ZONE DISTANCE	30 FT	3 FT
CONSTRUCTION CLEAR ZONE (MIN 18')	18 FT	18 FT



SHEET NO.	INDEX OF SHEETS
(R-3) (R-2) (R-1) 1	TITLE SHEET
2	STANDARD PLANS LIST
3-4	GENERAL NOTES
5	PAVEMENT DESIGN PARAMETERS
6-8	TYPICAL SECTIONS
(R-3) (R-2) 9-16	SUMMARY OF APPROXIMATE QUANTITIES
17	SUMMARY OF EARTHWORK
18	TABULATION OF REMOVALS
(R-2) 19	TABULATION OF SURFACING
(R-2) 20	TABULATION OF GUARDRAIL
21	TABULATION OF CURB RAMPS, SIDEWALK, CURB & GUTTER AND MEDIAN COVER MATERIAL
22	TABULATION OF LIGHTING
23	SURVEY TABULATION SHEET
24-31	REMOVAL PLAN SHEETS
32-33	ROADWAY GEOMETRY PLAN
34-41	ROADWAY PLAN SHEETS
42-47	ROADWAY PROFILE SHEETS
48-55	ROADWAY DETAILS
56	GENERAL ENVIRONMENTAL NOTES
57	WETLANDS/PRAIRIE DOG/MIGRATORY BIRDS PLAN
58	NOXIOUS WEED PLAN
(R-2) (R-1) 59-62	STORMWATER MANAGEMENT PLANS
63-71	EROSION CONTROL PLANS (INITIAL)
72-80	EROSION CONTROL PLANS (INTERIM)
81-89	EROSION CONTROL PLANS (FINAL)
90-91	DRAINAGE TABULATION
(R-1) 92-108	DRAINAGE DETAILS
109-114	DRAINAGE PLANS
(R-1) 115-123	DRAINAGE PROFILES
(R-3) (R-2) 124-167	STRUCTURE PLANS (E-17-ACR)
(R-2) 168-190	RETAINING WALL PLANS
(R-3) (R-2) 191	TABULATION OF TRAFFIC ENGINEERING ITEMS
(R-2) 192	TABULATION OF PAVEMENT MARKING
193-199	PAVEMENT MARKING PLANS
200-202	TABULATION OF TRAFFIC SIGNS
203-210	SIGNING PLANS
211	TABULATION OF SIGNAL
212-213	TRAFFIC SIGNAL PLANS
214-215	RAMP METER PLANS
(R-2) 216-267	CONSTRUCTION PHASING PLANS
268	LAND SURVEY CONTROL DIAGRAM
(R-1) 269-278	UTILITY PLANS
279-294	STRUCTURE ENHANCEMENT PLANS
294-300	LIGHTING ENHANCEMENT PLANS



Print Date: 12/13/2010
 File Name: 17535DES_TitleSht2010-12-13.dgn
 Horiz. Scale: 1:2000 Vert. Scale: As Noted
 Unit Information Unit Leader Initials

Sheet Revisions		
Date:	Comments	Init.
(R-1) 11/19/2010	REVISED PLANS 1, 62	KRK
	108, 122, 270-278	
(R-2) 2/06/2010	REVISED PLANS 1, 9-12	KRK
	15, 19, 20, 62, 127, 176	
(R-3) 12/06/2010	REVISED PLANS 1, 9, 127, 191	

Colorado Department of Transportation
 As Constructed
 No Revisions:
 Revised:
 Void:
 DJH
 4670 Holly Street
 Denver, CO 80216-6408
 Phone: 303-398-6780 FAX: 720-945-1028
 Region 6

Contract Information	
Contractor:	
Resident Engineer:	
Project Engineer:	
PROJECT STARTED: / /	ACCEPTED: / /
Comments:	

Project No./Code
 FBR 0253-209
 17535
 Sheet Number 1

c:\17535\17535\17535DES_TitleSht2010-12-13.dgn

INDEX			CONTRACT ITEM NO.	CONTRACT ITEM	UNIT	ROADWAY		STRUCTURE ENHANCEMENTS		STRUCTURES E-17-ACR		WALL E-17-CW		WALL E-17-CX		WALL E-17-CY (NE)		PROJECT TOTALS		
BOOK	PAGE	SHEET				PLAN	AS CONST.	PLAN	AS CONST.	PLAN	AS CONST.	PLAN	AS CONST.	PLAN	AS CONST.	PLAN	AS CONST.	PLAN	AS CONST.	PLAN
			201-00001	Clearing and Grubbing	ACRE	2	2.69*												2	2.69
			202-00010	Removal of Tree	EACH	92	154												92	154
			202-00019	Removal of Inlet	EACH	3	7												3	7
			202-00021	Removal of Manhole	EACH	6	6												6	6
			202-00024	Removal of Embankment Protector Type 5	EACH	4	4												4	4
			202-00026	Removal of Slope and Ditch Paving	SY	130	292												130	292
			202-00033	Removal of Pipe	EACH	5	5												5	5
			202-00035	Removal of Pipe	LF	210	247												210	247
			202-00037	Removal of End Section	EACH	11	11												11	11
			202-00090	Removal of Delineator	EACH	12	15												12	15
55			202-00155	Removal of Wall	LF	77	680												77	680
			202-00160	Removal of Wall	SF					4,136	4136	5,256	5256					9,392	9392	
			202-00190	Removal of Concrete Median Cover Material	SY	700	916		88									700	1004	
			202-00200	Removal of Sidewalk	SY	327	373												327	373
			202-00203	Removal of Curb and Gutter	LF	3,913	3518		352										3,913	3,518
			202-00206	Removal of Concrete Curb Ramp	SY	67	59												67	59
			202-00210	Removal of Concrete Pavement	SY	32	25.7												32	25.7
		(R-2)	202-00220	Removal of Asphalt Mat	SY	10,838	12,013											(R-2)	10,838	12,013
			202-00240	Removal of Asphalt Mat (Planing)	SY	17,033	4700												17,033	4700
		(R-3)	202-00250	Removal of Pavement Marking	SF	7,324	9,866											(R-3)	7,324	9,866
			202-00400	Removal of Bridge	EACH					1	1								1	1
			202-00810	Removal of Ground Sign	EACH	21	21												21	21
			202-00821	Removal of Sign Panel	EACH	6	0												6	0
			202-00825	Removal of Flashing Beacon	EACH	4	4												4	4
			202-00828	Removal of Traffic Signal Equipment	L S	1	1												1	1
			202-00900	Removal of Concrete Footing	EACH	10	10												10	10
			202-01130	Removal of Guardrail Type 3	LF	566	555												566	555
			202-01170	Removal of Guardrail Type 7	LF	753	384												753	384
			202-01300	Removal of End Anchorage	EACH	5	5												5	5
			202-04001	Plug Culvert	EACH	5	5												5	5
			203-00010	Unclassified Excavation (Complete In Place)	CY	12,954	12,954												12,954	12,954
			203-00100	Muck Excavation	CY	2,000	884.3												2,000	884.3
			203-01100	Proof Rolling	HOURL	20	3.5												20	3.5

*2.69 w/ change order

55

48

(R-2)

(R-3)


(R-2)

(R-3)

Last Modification Date:	
Drawing File Name: C:\Projects\15881\Design\Drawings\17535DES_SAQ01.dgn	
Horiz. Scale:	Vert. Scale: As Noted
Unit Information 6320	Unit Leader Initials JCS

Sheet Revisions		
Date:	Comments	Init.
(R-2) 12/06/10	CHANGE QUANTITY	LYT
(R-3) 12/13/10	CHANGE QUANTITY	LYT

Colorado Department of Transportation



4670 Holly Street
Denver, CO 80216-6408
Phone: 303-398-6780 FAX: 720-945-1028

Region 6 DJH

As Constructed	
No Revisions:	
Revised:	
Void:	

SUMMARY OF APPROXIMATE QUANTITIES			
Designer:	LY	Structure	
Detailer:		Numbers	
Sheet Subset:		Subset Sheets:	1 of 8

Project No./Code	
FBR 0253-209	
17535	
Sheet Number	9

INDEX			CONTRACT ITEM NO.	CONTRACT ITEM	UNIT	ROADWAY		STRUCTURE ENHANCEMENTS		STRUCTURES E-17-ACR		WALL E-17-CW		WALL E-17-CX		WALL E-17-CY (NE)		PROJECT TOTALS		
BOOK	PAGE	SHEET				PLAN	AS CONST.	PLAN	AS CONST.	PLAN	AS CONST.	PLAN	AS CONST.	PLAN	AS CONST.	PLAN	AS CONST.	PLAN	AS CONST.	PLAN
			203-01500	Blading	HOUR	80	16												80	16
			203-01597	Potholing	HOUR	80	47.5												80	47.5
			203-01622	Sweeping (With Pickup Broom)	HOUR	200	137.75												200	137.75
			206-00000	Structure Excavation	CY					1,906	1906					1,767	1767		3,673	3673
			206-00100	Structure Backfill (Class 1)	CY					1,566	1566					6,660	6600		8,226	8226
			206-00200	Structure Backfill (Class 2)	CY					99	99								99	
			206-00360	Mechanical Reinforcement of Soil	CY					1,566	1566					3,332	4295		5,098	5861
			206-01781	Shoring (Area 1)	L S					1	1								1	1
			206-01782	Shoring (Area 2)	L S					1	1								1	1
			206-01783	Shoring (Area 3)	L S					1	1								1	1
			206-01784	Shoring (Area 4)	L S					1	1								1	1
1281			206-01785	Shoring (Area 5)	L S					1	1					1	1		1	1
			206-01785	Shoring (Area 5) CO	L S															0
			208-00002	Erosion Log (12 inch)	LF	2,438	2348												2,438	2348
			208-00005	Erosion Log	LF	3,248	0												3,248	0
			208-00009	Erosion Log (20 inch)	LF	812	190												812	190
			208-00020	Silt Fence	LF	7,600	4006												7,600	4006
			208-00034	Gravel Bag	LF	246	1032												246	1032
			208-00045	Concrete Washout Structure	EACH	8	3												8	3
			208-00050	Storm Drain Inlet Protection	EACH	46	31												46	31
			208-00070	Vehicle Tracking Pad	EACH	10	13												10	13
			208-00103	Removal and Disposal of Sediment (Lobor)	HOUR	1,000	705.25												1,000	705.25
			208-00105	Removal and Disposal of Sediment (Equipment)	HOUR	1,500	38.5												1,500	38.5
			208-00206	Erosion Control Supervisor	DAY	580	388.0												580	388
			210-00810	Reset Ground Sign	EACH	+	3												+	3
			210-00815	Reset Sign Panel	EACH	6	0												6	0
			210-00848	Reset Traffic Signal Controller and Cabinet	EACH	2	2												2	2
			210-00858	Reset Pedestal Pole	EACH	4	0												4	0
			210-00867	Reset Fire Preemption Unit	EACH	2	2												2	2
			210-04010	Adjust Manhole	EACH	3	3												3	3
			210-04025	Modify Structure	EACH	1	1												1	1
			212-00006	Seeding (Native)	ACRE	4.7	4.556												4.7	4.556
			212-00032	Soil Conditioning	ACRE	4.9	4.316												4.9	4.316
			213-00003	Mulching (Weed Free)	ACRE	4.7	4.086												4.7	4.086
			213-00061	Mulch Tockifier	LB	3,400	778												3,400	778
			213-00100	Soil Binder	ACRE	1.24	1.24												1.24	1.24

Last Modification Date:
Drawing File Name: C:\Projects\15881\Design\Drawings\
17535DES_SAO02.dgn
Horiz. Scale: Vert. Scale: As Noted
Unit Information 6320 Unit Leader Initials JCS

Sheet Revisions		
Date:	Comments	Init.
12/06/10	CHANGE EROSION LOG	LYT

Colorado Department of Transportation

4670 Holly Street
Denver, CO 80216-6408
Phone: 303-398-6780 FAX: 720-945-1028
Region 6 DJH

As Constructed
No Revisions:
Revised:
Void:


SUMMARY OF APPROXIMATE QUANTITIES			
Designer:	LY	Structure	
Detailer:		Numbers	
Sheet Subset:		Subset Sheets:	2 of 8

Project No./Code
FBR 0253-209
17535
Sheet Number 10

INDEX			CONTRACT ITEM NO.	CONTRACT ITEM	UNIT	ROADWAY		STRUCTURE ENHANCEMENTS		STRUCTURES E-17-ACF		WALL E-17-CW		WALL E-17-CX		WALL E-17-CY (NE)		PROJECT TOTALS		
BOOK	PAGE	SHEET				PLAN	AS CONST.	PLAN	AS CONST.	PLAN	AS CONST.	PLAN	AS CONST.	PLAN	AS CONST.	PLAN	AS CONST.	PLAN	AS CONST.	PLAN
			216-00030	Soil Retention Blanket (Special)	SY	4388	841												4388	841
			217-00020	Herbicide Treatment	HOUR	80	6.5												80	6.5
			240-00100	Prairie Dog Management	L S	1	1												1	1
			304-06007	Aggregate Base Course (Class 6)	CY	2187	2908.3												2187	2908.3
			403-00720	Hot Mix Asphalt (Patching) (Asphalt)	TON	661	759.68												661	759.68
			403-00800	Emergency Pothole Repair	TON	20	0												20	0
			403-09221	Stone Matrix Asphalt (Fibers)(Asphalt)	TON	2810	3163.24			542	633.79								3357	3797.0
		(R-2)	403-33841	Hot Mix Asphalt (Grading S) (100) (PG 64-22)	TON	5713	6483												5713	6483
			412-01025	Concrete Pavement (10-1/4 Inch)	SY	46	44.7												46	44.7
			420-00000	Geomembrane	SY									1895	1895				1895	1895
			420-00102	Geotextile (Erosion Control) (Class 1)	SY	112	0												112	0
			503-00018	Drilled Caisson (18 Inch)	LF	40	40												40	40
			503-00024	Drilled Caisson (24 Inch)	LF					1097	1225.4								1097	1225.4
			503-00036	Drilled Caisson (36 Inch)	LF	19	19												19	19
			503-00048	Drilled Caisson (48 Inch)	LF	63	63	280	323.7										352	386.7
			503-00054	Drilled Caisson (54 Inch)	LF					277	330.21								277	330.21
			504-04410	Block Facing	SF									7980	9035				7980	9035
			504-06100	Ground Nailed Wall	SF					2233	2233	1889	1889						4122	4122
			506-00212	Riprap (12 Inch)	CY	52	52												52	52
			507-00000	Concrete Slope and Ditch Paving	CY									2	1.5	2	1.5	40	32.6	35.6
			507-00100	Concrete Slope and Ditch Paving (Reinforced)	CY	22	26.14			152	146.95								174	173.09
			513-00600	Bridge Drain	EACH	4	4			4	4								4	4
			514-00000	Pipe Railing	LF			114	114										114	114
			514-00200	Pedestrian Railing (Steel)	LF			516	516										516	516
			514-01040	Bikeway Railing (Steel)	LF									330	330				330	330
			515-00120	Waterproofing (Membrane)	SY					3362	3373								3362	3373
			515-00400	Concrete Sealer	SY					801	835								801	835
			518-01004	Bridge Expansion Device (0-4 Inch)	LF					258	258								258	258
			601-03040	Concrete Class D (Bridge)	CY			436	436	1514	1514								1950	1950
			601-03050	Concrete Class D (Wall)	CY	19	19					85	85	75	75	232	234.43		411	413.43
			601-26000	Precast Concrete Cap (Decorative) (Special)	EACH			4	4										4	4
			601-40005	Cut Stone Veneer	SF			4405	4527.52										4405	4527.52
			601-40400	Structural Concrete Stain	SY			295	295	1792	1792	120	120	120	120	660	590		2987	2917

Last Modification Date:
Drawing File Name: C:\Projects\15881\Design\Drawings\
17535DES_SAO03.dgn
Horiz. Scale: Vert. Scale: As Noted
Unit Information 6320 Unit Leader Initials JCS

Sheet Revisions			
Date:	Comments	Init.	
12/06/10	CHANGE QUANTITY	LYT	

Colorado Department of Transportation

4670 Holly Street
Denver, CO 80216-6408
Phone: 303-398-6780 FAX: 720-945-1028
Region 6 DJH

As Constructed		SUMMARY OF APPROXIMATE QUANTITIES	
No Revisions:		Designer:	LY
Revised:		Detailer:	Structure Numbers
Void:		Sheet Subset:	Subset Sheets: 3 of 8

Project No./Code
FBR 0253-209
17535
Sheet Number 11

INDEX			CONTRACT ITEM NO.	CONTRACT ITEM	UNIT	ROADWAY		STRUCTURE ENHANCEMENTS		STRUCTURES E-17-ACR		WALL E-17-CW		WALL E-17-CX		WALL E-17-CY (NE)		PROJECT TOTALS	
BOOK	PAGE	SHEET				PLAN	AS CONST.	PLAN	AS CONST.	PLAN	AS CONST.	PLAN	AS CONST.	PLAN	AS CONST.	PLAN	AS CONST.	PLAN	AS CONST.
			602-00020	Reinforcing Steel (Epoxy Coated)	LB			40,885	41,865	320,580	320,580	8,973	8973	8,377	8377	32,533	32,533	411,328	412,328
			603-01185	18 Inch Reinforced Concrete Pipe (Complete In Place)	LF	842	814											842	814
			603-01245	24 Inch Reinforced Concrete Pipe (Complete In Place)	LF	27	27											27	27
			603-01305	30 Inch Reinforced Concrete Pipe (Complete In Place)	LF	110	110											110	110
			603-01365	36 Inch Reinforced Concrete Pipe (Complete In Place)	LF	519	519											519	519
			603-01425	42 Inch Reinforced Concrete Pipe (Complete In Place)	LF	197	197											197	197
			603-01605	60 Inch Reinforced Concrete Pipe (Complete In Place)	LF	1,012	1012											1,012	900
			603-05018	18 Inch Reinforced Concrete End Section	EACH	4	4											4	4
			603-05024	24 Inch Reinforced Concrete End Section	EACH	1	1											1	1
			603-05036	36 Inch Reinforced Concrete End Section	EACH	1	1											1	1
			603-07360	36 Inch Reinforced Concrete Pipe (Jacked)	LF	238	238											238	238
			604-00305	Inlet Type C (5 Foot)	EACH	2	2											2	2
			604-00310	Inlet Type C (10 Foot)	EACH	1	1											1	1
			604-00505	Inlet Type D (5 Foot)	EACH	1	1											1	1
			604-00511	Inlet Type D (Special) (10 Foot)	EACH	2	2											2	2
			604-00550	Inlet Type D (Special)	EACH	2	2											2	2
			604-19110	Inlet Type R L 5 (10 Foot)	EACH	2	2											2	2
			604-19205	Inlet Type R L 10 (5 Foot)	EACH	1	1											1	1
			604-19210	Inlet Type R L 10 (10 Foot)	EACH	4	4											4	4
			604-19215	Inlet Type R L 10 (15 Foot)	EACH	1	1											1	1
			604-26010	Vane Grate Inlet (Double) (10 Foot)	EACH	1	1											1	1
			604-30010	Manhole Slab Base (10 Foot)	EACH	4	4											4	4
			604-30015	Manhole Slab Base (15 Foot)	EACH	5	5											5	5
			604-31000	Manhole Box Base (Special)	EACH	1	1											1	1
			604-31015	Manhole Box Base (15 Foot)	EACH	1	1											1	1
			605-00040	4 Inch Perforated Pipe Underdrain	LF							60	60	60	60			120	120
			605-84000	Subsurface Drain Outlet	LF							53	53	82	82			135	135
			606-00301	Guardrail Type 3 (6-3 Post Spacing)	LF	25	50											25	50
		(R-2)	606-00710	Guardrail Type 7 (Style CA)	LF	517	415											(R-2) 517	495
		(R-2)	606-00730	Guardrail Type 7 (Style CD)	LF	600	319.5											(R-2) 600	319.5

Last Modification Date:
Drawing File Name: C:\Projects\15881\Design\Drawings\17535DES_SAO04.dgn
Horiz. Scale: Vert. Scale: As Noted
Unit Information 6320 Unit Leader Initials JCS

Sheet Revisions		
Date:	Comments	Init.
12/06/10	CHANGE QUANTITIES	LYT

Colorado Department of Transportation

4670 Holly Street
Denver, CO 80216-6408
Phone: 303-398-6780 FAX: 720-945-1028
Region 6 DJH

As Constructed
No Revisions:
Revised:
Void:

SUMMARY OF APPROXIMATE QUANTITIES
Designer: LY
Detailer:
Sheet Subset:
Structure Numbers
Subset Sheets: 4 of 8

Project No./Code
FBR 0253-209
17535
Sheet Number 12


INDEX			CONTRACT ITEM NO.	CONTRACT ITEM	UNIT	ROADWAY		STRUCTURE ENHANCEMENTS		STRUCTURES E-17-ACP		WALL E-17-CW		WALL E-17-CX		WALL E-17-CY (NE)		PROJECT TOTALS		
BOOK	PAGE	SHEET				PLAN	AS CONST.	PLAN	AS CONST.	PLAN	AS CONST.	PLAN	AS CONST.	PLAN	AS CONST.	PLAN	AS CONST.	PLAN	AS CONST.	PLAN
			606-01340	End Anchorage Type 3D	EACH	3	4												3	4
			606-01380	Transition Type 3H	EACH	2	2												2	2
			606-10705	Bridge Rail Type 7 (Special)	LF					596	596							596	596	
			606-10742	Bridge Rail Type 7 (42")	LF									330	340			330	340	
			607-11525	Fence (Plastic)	LF	500	214											500	214	
			607-53148	Fence Chain Link (48 Inch)	LF									252	252			252	252	
			608-00006	Concrete Sidewalk (6 Inch)	SY	1,109	937											1,109	937	
			608-00010	Concrete Curb Ramp	SY	132	99.3											132	99.3	
			609-21010	Curb and Gutter Type 2 (Section I-B)	LF	2,158	2273		352									2,158	2625	
			609-21020	Curb and Gutter Type 2 (Section II-B)	LF	1,978	2252											1,978	2252	
			609-24000	Gutter Type 2 (Special)	LF	633	633											633	633	
			609-24006	Gutter Type 2 (6 Foot)	LF	141	141											141	141	
			610-00026	Median Cover Material (6 Inch Patterned Concrete)	SF	7,201	7296		794									7,201	8090	
			612-00001	Delineator (Type I)	EACH	10	10											10	10	
			612-00002	Delineator (Type II)	EACH	5	10											5	10	
			613-00100	1 Inch Electrical Conduit	LF			64	64	83	83							147	147	
			613-00200	2 Inch Electrical Conduit	LF	1,854	1,166	116	116	1,578	538							3,548	654	
			613-00206	2 Inch Electrical Conduit (Bored)	LF	1,400	6151											1,400	6151	
			613-00306	3 Inch Electrical Conduit (Bored)	LF	1,110	1714											1,110	1714	
			613-01100	1 Inch Electrical Conduit (Plastic)	LF			850	850									850	850	
			613-01200	2 Inch Electrical Conduit (Plastic)	LF	1,575	5745	340	340									1,915	6085	
			613-01300	3 Inch Electrical Conduit (Plastic)	LF	775	437											775	437	
			613-04120	1 Inch Electrical Conduit (Liquidtight Flexible Metal)	LF			80	200									80	200	
			613-07000	Pull Box (Special)	EACH	2	2											2	2	
			613-07023	Pull Box (24"x36"x24")	EACH	24	13											24	13	
			613-07026	Pull Box (16"x24"x12")	EACH	9	23											9	23	
			613-10000	Wiring	L S	0.5	0.5			0.5	0.5							1	1.0	
			613-10010	Wiring (Special)	L S			1	1									1	1	
			613-15000	Floodlight	EACH			8	8									8	8	
			613-16000	Luminaire (Special)	EACH			8	8									8	8	
			613-16010	Light Standard and Luminaire (Decorative)	EACH			4	4									4	4	
			613-34300	Light Standard Metal (30 Foot)	EACH	9	9											10	10	

Last Modification Date:		Sheet Revisions		Colorado Department of Transportation		As Constructed		SUMMARY OF APPROXIMATE QUANTITIES			Project No./Code	
Drawing File Name: C:\Projects\15881\Design\Drawings\175350ES_SAO05.dgn		Date:	Comments	Init.	4670 Holly Street Denver, CO 80216-6408 Phone: 303-398-6780 FAX: 720-945-1028		No Revisions:	Designer:	LY	Structure Numbers	FBR 0253-209	
Horiz. Scale: Vert. Scale: As Noted					Region 6 DJH		Revised:	Detailer:			17535	
Unit Information 6320 Unit Leader Initials JCS							Void:	Sheet Subset:		Subset Sheets: 5 of 8	Sheet Number 13	

INDEX			CONTRACT ITEM NO.	CONTRACT ITEM	UNIT	ROADWAY		STRUCTURE ENHANCEMENTS		STRUCTURES E-17-ACR		WALL E-17-CW		WALL E-17-CX		WALL E-17-CY (NE)		PROJECT TOTALS		
BOOK	PAGE	SHEET				PLAN	AS CONST.	PLAN	AS CONST.	PLAN	AS CONST.	PLAN	AS CONST.	PLAN	AS CONST.	PLAN	AS CONST.	PLAN	AS CONST.	PLAN
			613-40010	Light Standard Foundation	EACH	7	7												7	7
			613-50010	Photoelectric Cell	EACH					2	2								2	2
			613-50100	Lighting Control Center	EACH		1	4	4										4	5
			613-70250	Luminaire High Pressure Sodium (250 Watt)	EACH	14	16												14	16
			613-72150	Luminaire High Pressure Sodium (Woll Type) (150 Watt)	EACH					2	2								2	2
			613-74000	Light Mast Arm	EACH			8	8										8	8
			614-00011	Sign Panel (Class I)	SF	228	227.4												228	227.4
			614-00012	Sign Panel (Class II)	SF	193	192.3												193	192.3
			614-00214	Steel Sign Post (1.75x1.75 Inch Tubing)	LF	132	132												132	132
			614-01583	Steel Sign Support (2-1/2 In Round Sch 80) (Post & Slipbase)	EACH	13	13												13	13
			614-70150	Pedestrian Signal Face (16) (Countdown)	EACH	8	8												8	8
			614-70336	Traffic Signal Face (12-12-12)	EACH	30	30												30	30
			614-72860	Pedestrian Push Button	EACH	8	8												8	8
			614-72875	Loop Detector Wire	LF	280	108												280	108
			614-72886	Intersection Detection System (Camera)	EACH	6	6												6	6
			614-80000	Flashing Beacon	EACH	4	4												4	4
			614-81155	Traffic Signal-Light Pole Steel (1-55 Foot Mast Arm)	EACH	1	1												1	1
			614-81165	Traffic Signal-Light Pole Steel (1-65 Foot Mast Arm)	EACH	1	1												1	1
			614-81260	Traffic Signal Light Pole Steel (2-60 Foot Mast Arm)	EACH	1	1												1	1
			614-81265	Traffic Signal-Light Pole Steel (2-65 Foot Mast Arm)	EACH	1	1												1	1
			614-84000	Traffic Signal Pedestal Pole Steel	EACH	4	4												4	4
			614-87350	Test Fiber Optic Cable	L S	1	1												1	1
			614-87406	Fiber Optic Cable (Single Mode) (6 Strands)	LF	150	150												150	150
			614-87424	Fiber Optic Cable (Single Mode) (24 Strands)	LF	940	4321												940	4321
			618-01996	Prestressed Concrete Box (Depth Greater Than 48 Inches)	SF			2,034	2034	28,471	28471								30,505	30505
			619-50320	4 Inch Plastic Pipe	LF	185	205												185	205
			619-50480	6 Inch Plastic Pipe	LF	185	205												185	205
			620-00002	Field Office (Class 2)	EACH	1	1												1	1
			620-00012	Field Laboratory (Class 2)	EACH	1	1												1	1

Last Modification Date:
Drawing File Name: C:\Projects\15881\Design\Drawings\
17535DES_SAO06.dgn
Horiz. Scale: Vert. Scale: As Noted
Unit Information 6320 Unit Leader Initials JCS

Sheet Revisions		
Date:	Comments	Init.

Colorado Department of Transportation

4670 Holly Street
Denver, CO 80216-6408
Phone: 303-398-6780 FAX: 720-945-1028
Region 6 DJH

As Constructed
No Revisions:
Revised:
Void:

SUMMARY OF APPROXIMATE QUANTITIES
Designer: LY Structure Numbers
Detailer: .
Sheet Subset: Subset Sheets: 6 of 8


Project No./Code
FBR 0253-209
17535
Sheet Number 14

0000

INDEX			CONTRACT ITEM NO.	CONTRACT ITEM	UNIT	ROADWAY		STRUCTURE ENHANCEMENTS		STRUCTURES E-17-ACR		WALL E-17-CW		WALL E-17-CX		WALL E-17-CY (NE)		PROJECT TOTALS	
BOOK	PAGE	SHEET				PLAN	AS CONST.	PLAN	AS CONST.	PLAN	AS CONST.	PLAN	AS CONST.	PLAN	AS CONST.	PLAN	AS CONST.	PLAN	AS CONST.
			620-00020	Sanitary Facility	EACH	1)											1	1
			621-00450	Detour Pavement	SY	6,470	6592.90											6,470	6592.90
			625-00000	Construction Surveying	L S	1	1											1	1
			625-00001	Construction Surveying (Hourly)	HOUR	75	31											75	31
			626-00000	Mobilization	L S	1	1											1	1
			626-01000	Public Information Services	L S	1	1											1	1
		(R-2)	627-00005	Epoxy Pavement Marking	GAL	290	359 146.78										(R-2)	290	359 146.78
		(R-2)	627-00060	Preformed Plastic Pavement Marking (60 Mills)	SF	3,507	0 2631.5										(R-2)	3,507	0 2631.5
		(R-2)	627-00070	Preformed Thermoplastic Pavement Marking	SF	2,998	0 2631.5										(R-2)	2,998	0 2631.5
			627-02010	Preformed Plastic Pavement Marking (Type II) (Inlaid)	SF	1,244	264.25											1,244	264.25
			627-30327	Preformed Plastic Pavement Marking (Word-Symbol) (Type III)	SF	473	279.5											473	279.5
			627-30332	Preformed Plastic Pavement Marking (Xwalk-Stop Line) (Type III)	SF	1,192	716.0											1,192	716.0
			630-00000	Flagging	HOUR	2,500	3568											2,500	3568
			630-00004	Traffic Control Vehicle	EACH	4	0											4	0
			630-00007	Traffic Control Inspection	DAY	130	224											130	224
			630-00012	Traffic Control Management	DAY	450	378											450	378
			630-00015	Uniformed Traffic Control Coordination	HOUR	40	20											40	20
			630-80001	Flashing Beacon (Portable)	EACH	4	5											4	5
			630-80305	Flagging Station Light	EACH	4	2											4	2
			630-80335	Barricade (Type 3 M-A) (Temporary)	EACH	7	18											7	18
		(R-2)	630-80341	Construction Traffic Sign (Panel Size A)	EACH	50	30										(R-2)	50	30
		(R-2)	630-80342	Construction Traffic Sign (Panel Size B)	EACH	27	62										(R-2)	27	62
			630-80343	Construction Traffic Sign (Panel Size C)	EACH	10	0											10	0
			630-80344	Construction Traffic Sign (Special)	SF	94	94											94	94
			630-80355	Portable Message Sign Panel	EACH	4	5											4	5
			630-80358	Advance Warning Flashing or Sequencing Arrow Panel (C Type)	EACH	4	7											4	7
			630-80360	Drum Channelizing Device	EACH	500	120											500	120
			630-80363	Drum Channelizing Device (With Light) (Flashing)	EACH	100	0											100	0
			630-80370	Concrete Barrier (Temporary)	LF	4,500	5954.3											4,500	5954.3
			630-80380	Traffic Cone	EACH	500	496											500	496
			630-85010	Impact Attenuator (Temporary)	EACH	30	9											30	9

Last Modification Date:
Drawing File Name: C:\Projects\15881\Design\Drawings\
17535DES_SAOQ7.dgn
Horiz. Scale: Vert. Scale: As Noted
Unit Information 6320 Unit Leader Initials JCS

Sheet Revisions		
Date:	Comments	Init.
12/06/10	CHANGE QUANTITIES	LYT

Colorado Department of Transportation

4670 Holly Street
Denver, CO 80216-6408
Phone: 303-398-6780 FAX: 720-945-1028
Region 6 DJH

As Constructed
No Revisions:
Revised:
Void:


SUMMARY OF APPROXIMATE QUANTITIES
Designer: LY Structure Numbers
Detailer: .
Sheet Subset: Subset Sheets: 7 of 8

Project No./Code
FBR 0253-209
17535
Sheet Number 15

INDEX			CONTRACT ITEM NO.	CONTRACT ITEM	UNIT	ROADWAY		STRUCTURE ENHANCEMENTS		STRUCTURES E-17-ACR		WALL E-17-CW		WALL E-17-CX		WALL E-17-CY (NE)		PROJECT TOTALS		
BOOK	PAGE	SHEET				PLAN	AS CONST.	PLAN	AS CONST.	PLAN	AS CONST.	PLAN	AS CONST.	PLAN	AS CONST.	PLAN	AS CONST.	PLAN	AS CONST.	PLAN
			630-85040	Impact Attenuator (Truck Mounted Attenuator) (Temporary)	EACH	2	2												2	2
			630-86810	Traffic Signal (Temporary)	EACH	2	2												2	2
			700-70010	FORCE ACCOUNT =====	F A	1		1											2	2
			700-70011	F/A Minor Contract Revisions	F A	1													1	1
			700-70012	F/A Partnering	F A	1													1	1
			700-70016	F/A Asphalt Pavement Incentive	F A	1													1	1
			700-70019	F/A Fuel Cost Adjustment	F A	1													1	1
			700-70021	F/A Asphalt Cement Cost Adjustment	F A	1													1	1
			700-70022	F/A On-The-Job Trainee	HOUR	1,600	1448												1,600	1448
			700-70028	F/A QJT Colorado Training Program	F A	1	1												1	1
			700-70028	F/A ESB Program	F A	1	1												1	1
			700-70034	F/A Dispute Resolution Board	F A	1	1												1	1
			700-70034	F/A Uniformed Traffic Control (Officer Time)	F A	1	1												1	1
			700-70035	F/A Dewatering	F A	1	1												1	1
			700-70060	F/A Adjust Utilities	F A	1	1												1	1
			700-70082	F/A Furnish & Install Electrical Service	F A	1	1												1	1
			700-70380	F/A Erosion Control	F A	1	1												1	1
			700-70589	F/A Environmental Health & Safety Management	F A	1	1												1	1

Last Modification Date:
Drawing File Name: C:\Projects\15881\Design\Drawings\
17535DES_SAO08.dgn
Horiz. Scale: Vert. Scale: As Noted
Unit Information 6320 Unit Leader Initials JCS

Sheet Revisions		
Date:	Comments	Init.

Colorado Department of Transportation
 4670 Holly Street
Denver, CO 80216-6408
Phone: 303-398-6780 FAX: 720-945-1028
Region 6 DJH

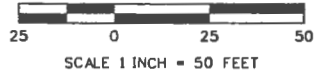
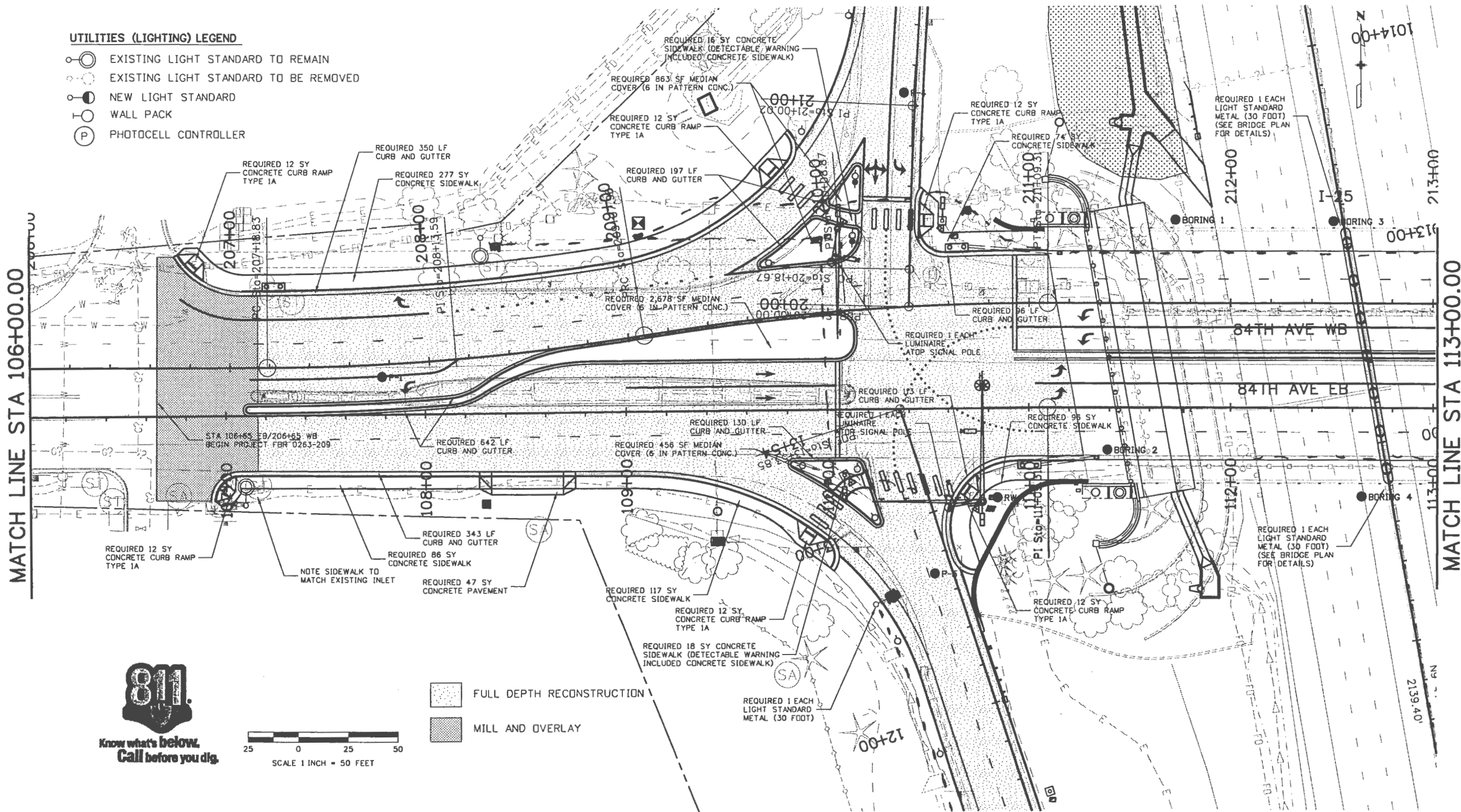
As Constructed
No Revisions:
Revised:
Void:

SUMMARY OF APPROXIMATE QUANTITIES			
Designer:	LY	Structure	
Detailer:		Numbers	
Sheet Subset:		Subset Sheets:	8 of 8

Project No./Code
FBR 0253-209
17535
Sheet Number 16

UTILITIES (LIGHTING) LEGEND

- EXISTING LIGHT STANDARD TO REMAIN
- EXISTING LIGHT STANDARD TO BE REMOVED
- NEW LIGHT STANDARD
- WALL PACK
- PHOTOCELL CONTROLLER



- FULL DEPTH RECONSTRUCTION
- MILL AND OVERLAY

Print Date: 10/20/2010	
File Name: 17535RoadwayPlan2.dgn	
Horiz. Scale: 1:50	Vert. Scale: As Noted
Unit Information	Unit Leader Initials

Sheet Revisions		
Date:	Comments	Init.

Colorado Department of Transportation

4670 Holly Street
Denver, CO 80216-6408
Phone: 303-398-6780 FAX: 720-945-1028

Region 6 **JCS**

As Constructed
No Revisions:
Revised:
Void:

ROADWAY PLAN SHEET			
Designer:	LYT/KMD	Structure	E-17-ACR
Detailer:	LYT	Numbers	
Sheet Subset:		Subset Sheets:	1 of 8

Project No./Code
FBR 0253-209
17535
Sheet Number 34

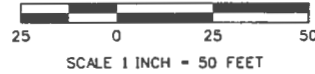
ylt 11:50:01 AM c:\projects\17535\plot_sets\ad\17535RoadwayPlan2.dgn

NOTE:

1. THE CONTRACTOR SHALL COORDINATE FINAL LOCATIONS WITH THE ENGINEER AND CITY OF THORNTON PRIOR TO INSTALLATION OF IRRIGATION SLEEVES.
2. THE CONTRACTOR SHALL PLACE A MARKER (STAKE OR FENCE POST OR SOMETHING SIMILAR) AT EACH END OF THE PIPE.

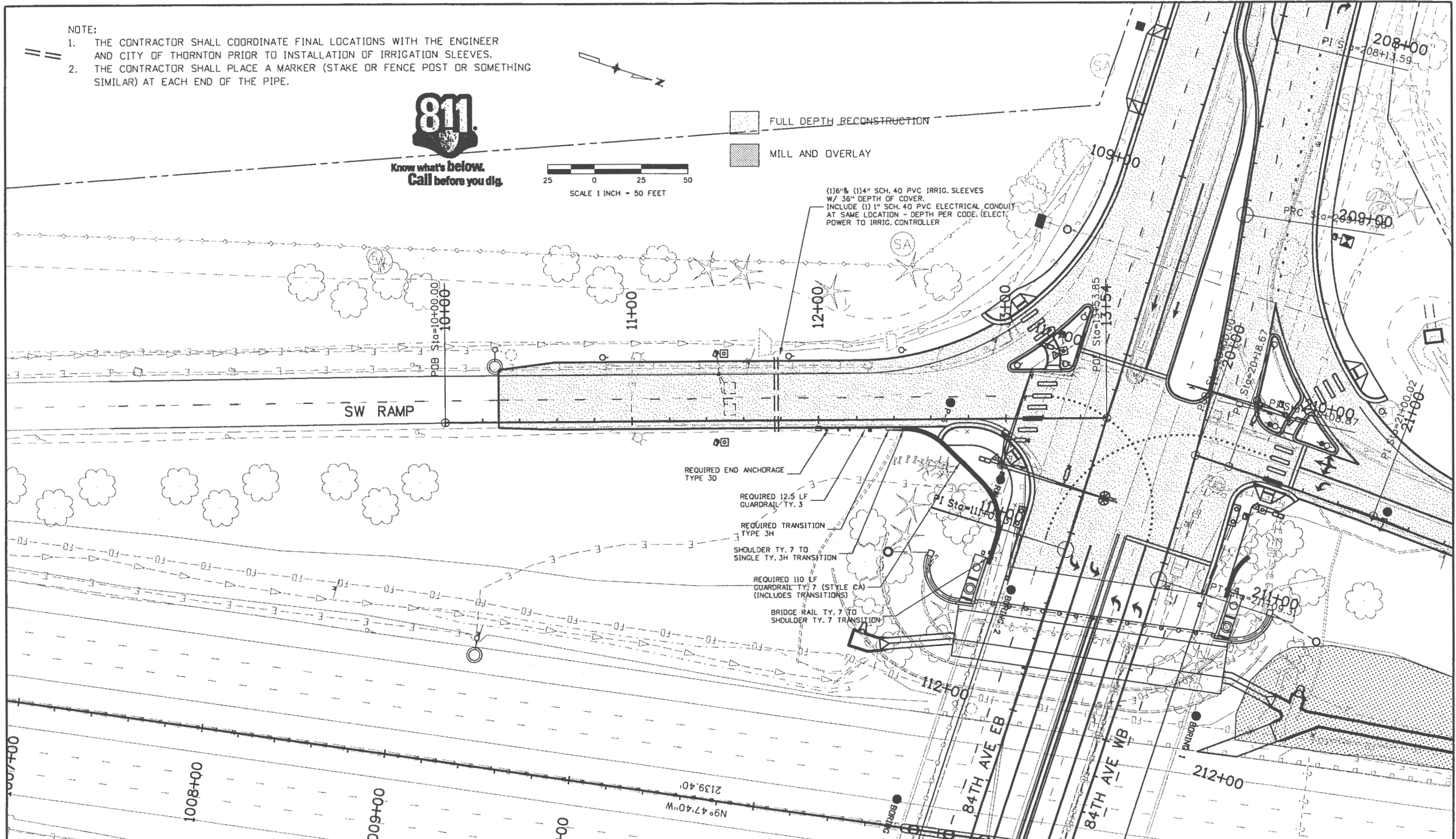


Know what's below.
Call before you dig.



FULL DEPTH RECONSTRUCTION
 MILL AND OVERLAY

(1)6" & (1)4" SCH. 40 PVC IRRIG. SLEEVES
W/ 36" DEPTH OF COVER.
INCLUDE (1) 1" SCH. 40 PVC ELECTRICAL CONDUIT
AT SAME LOCATION - DEPTH PER CODE. (ELECT.
POWER TO IRRIG. CONTROLLER)



Print Date: 10/20/2010	R-X 0000
File Name: 17535RoadwayPlanSWRamp.dgn	
Unit Information	
Horiz. Scale: 1:50	Vert. Scale: As Noted
Unit Leader Initials	

Sheet Revisions		
Date:	Comments	Init.

Colorado Department of Transportation
 4670 Holly Street
 Denver, CO 80216-6408
 Phone: 303-398-6780 FAX: 720-945-1028
 Region 6 JCS

As Constructed
No Revisions:
Revised:
Void:

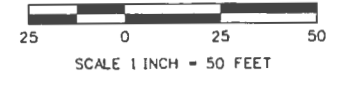
ROADWAY PLAN SHEET (SW RAMP)			
Designer:	LYT/KMD	Structure Numbers	E-17-ACR
Detailer:	LYT	Subset Sheets:	4 of 8
Sheet Subset:			

Project No./Code	FBR 0253-209
	17535
Sheet Number	37

lyt 11:53:42 AM c:\projects\17535\plot\sets\ad\17535RoadwayPlanSWRamp.dgn

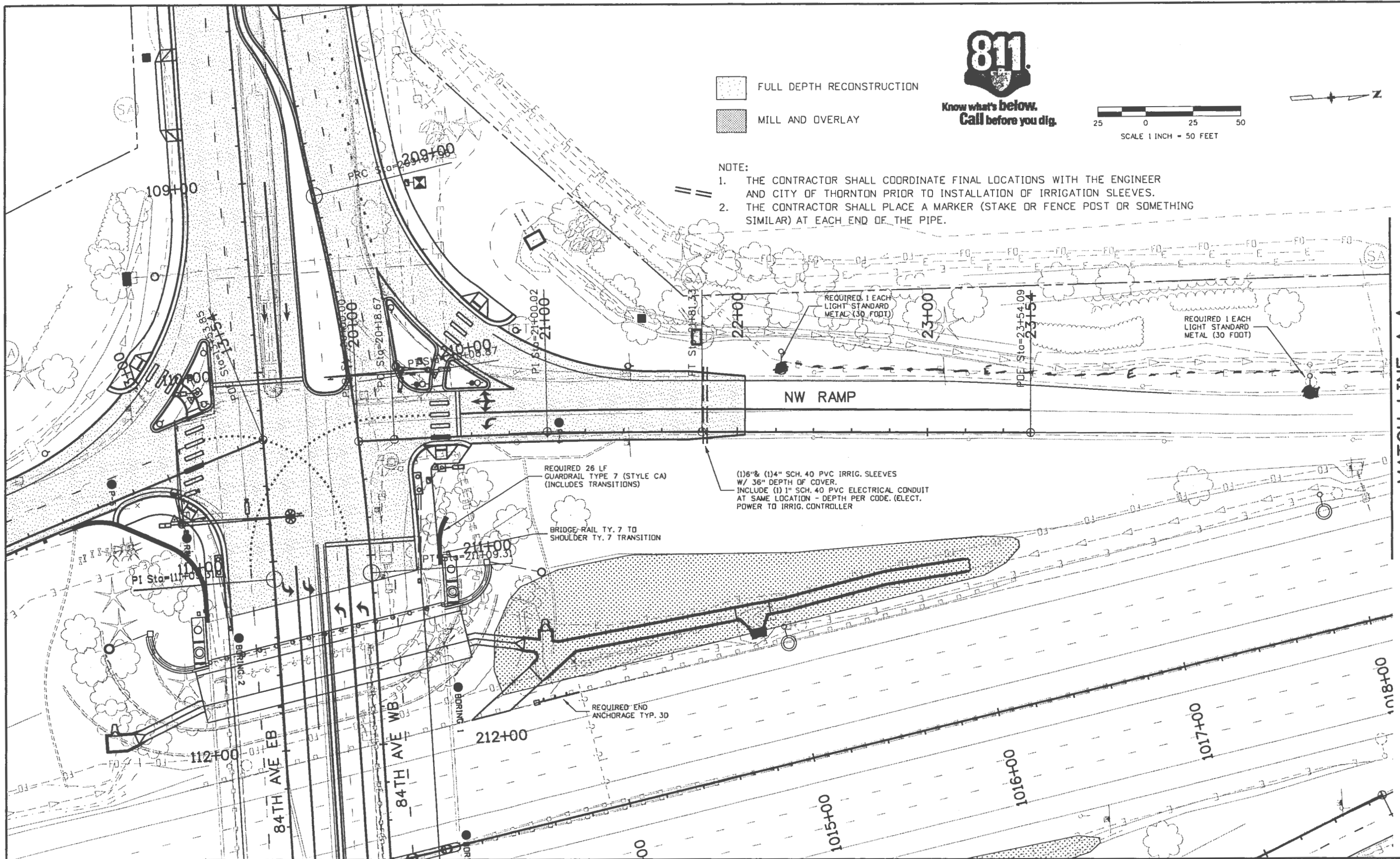


Know what's below.
Call before you dig.



- FULL DEPTH RECONSTRUCTION
- MILL AND OVERLAY

- NOTE:
1. THE CONTRACTOR SHALL COORDINATE FINAL LOCATIONS WITH THE ENGINEER AND CITY OF THORNTON PRIOR TO INSTALLATION OF IRRIGATION SLEEVES.
 2. THE CONTRACTOR SHALL PLACE A MARKER (STAKE OR FENCE POST OR SOMETHING SIMILAR) AT EACH END OF THE PIPE.



MATCH LINE A-A

Print Date: 10/20/2010	
File Name: 17535RoadwayPlanNWRamp.dgn	
Horiz. Scale: 1:50	Vert. Scale: As Noted
Unit Information	Unit Leader Initials

Sheet Revisions		
Date:	Comments	Init.

Colorado Department of Transportation

4670 Holly Street
Denver, CO 80216-6408
Phone: 303-398-6780 FAX: 720-945-1028

Region 6 JCS

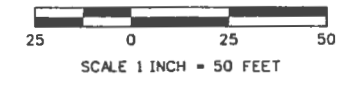
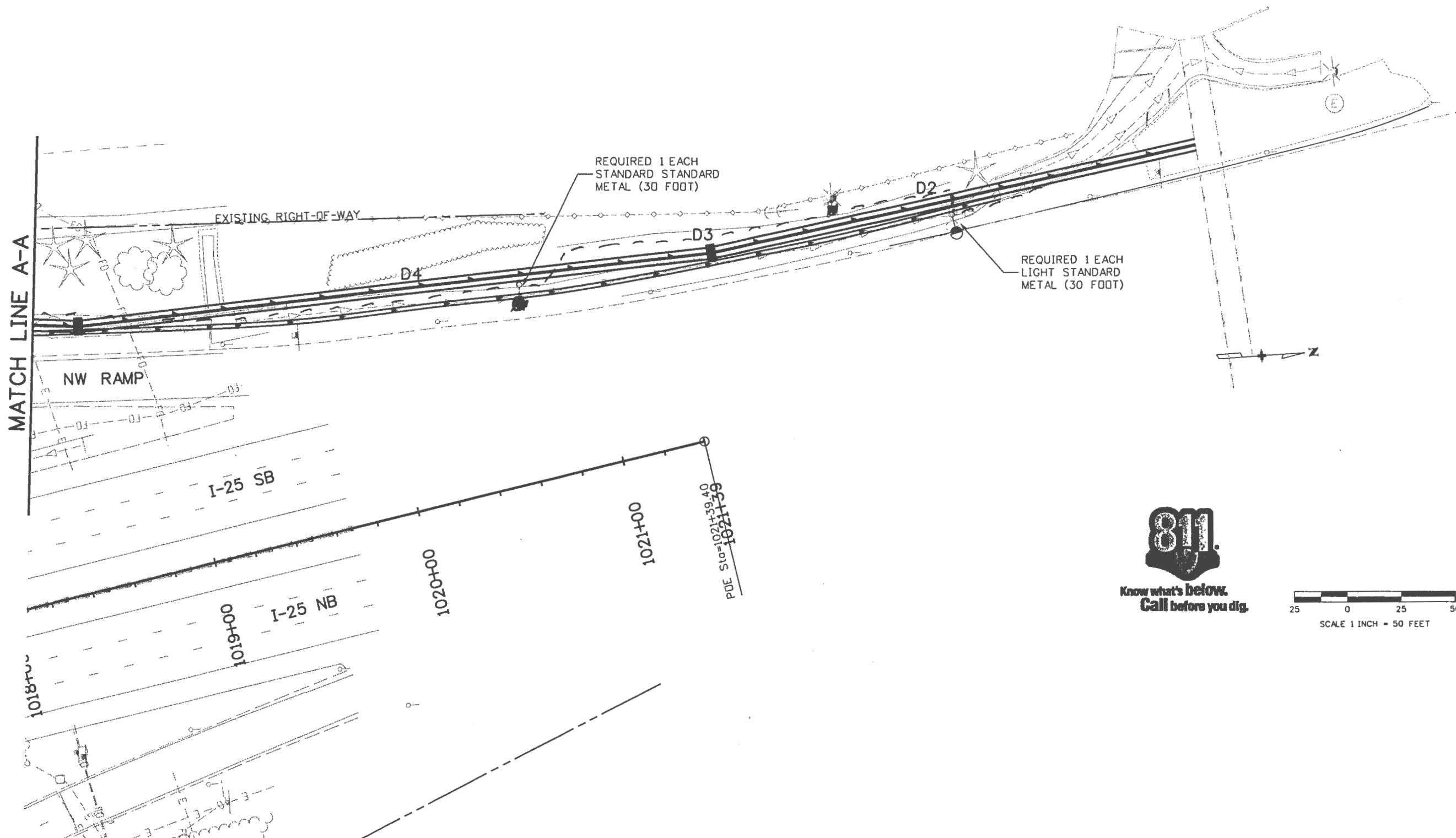
As Constructed	
No Revisions:	
Revised:	
Void:	

ROADWAY PLAN SHEET (NW RAMP)			
Designer:	LYT/KMD	Structure Numbers	E-17-ACR
Detailer:	LYT	Subset Sheets:	5 of 8
Sheet Subset:			

Project No./Code	
FBR 0253-209	
17535	
Sheet Number	38

lyt 11:53:10 AM c:\projects\17535\plots\sets\od\17535RoadwayPlanNWRamp.dgn

lyt 11:53:38 AM c:\projects\17535\pilot\series\ad\17535RoadwayPlanNWRamp02.dgn



Print Date: 10/20/2010	
File Name: 17535RoadwayPlanNWRamp02.dgn	
Horiz. Scale: 1:50	Vert. Scale: As Noted
Unit Information	Unit Leader Initials

Sheet Revisions		
Date:	Comments	Init.

Colorado Department of Transportation



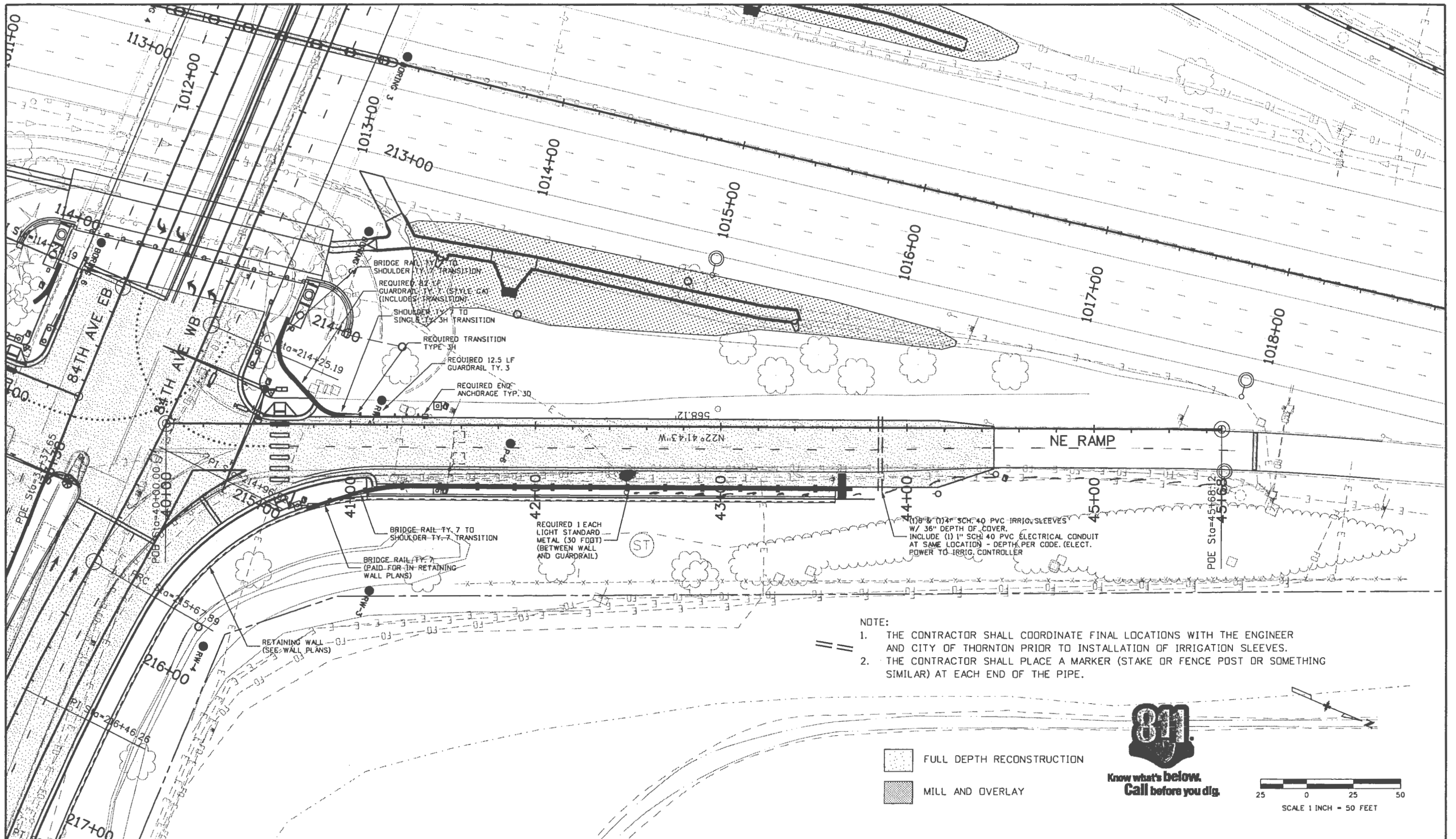
4670 Holly Street
 Denver, CO 80216-6408
 Phone: 303-398-6780 FAX: 720-945-1028

Region 6 DJH

As Constructed
No Revisions:
Revised:
Void:

ROADWAY PLAN SHEET (NW RAMP)			
Designer:	LYT	Structure Numbers	E-17-ACR
Detailer:	LYT	Subset Sheets:	6 of 8
Sheet Subset:			

Project No./Code	FBR 0253-209
	17535
Sheet Number	39



Print Date: 10/20/2010
 File Name: 17535RoadwayPlanNERamp.dgn
 Horiz. Scale: 1:50 Vert. Scale: As Noted
 Unit Information Unit Leader Initials

Sheet Revisions		
Date:	Comments	Init.

Colorado Department of Transportation
 4670 Holly Street
 Denver, CO 80216-6408
 Phone: 303-398-6780 FAX: 720-945-1028
 Region 6 JCS

As Constructed
 No Revisions:
 Revised:
 Void:

ROADWAY PLAN SHEET (NE RAMP)			
Designer:	LYT/KMD	Structure Numbers	E-17-ACR
Detailer:	LYT		
Sheet Subset:		Subset Sheets:	8 of 8

Project No./Code
 FBR 0253-209
 17535
 Sheet Number 41

lyt 11:54:14 AM c:\projects\17535\plot_seta\ad\17535RoadwayPlanNERamp.dgn

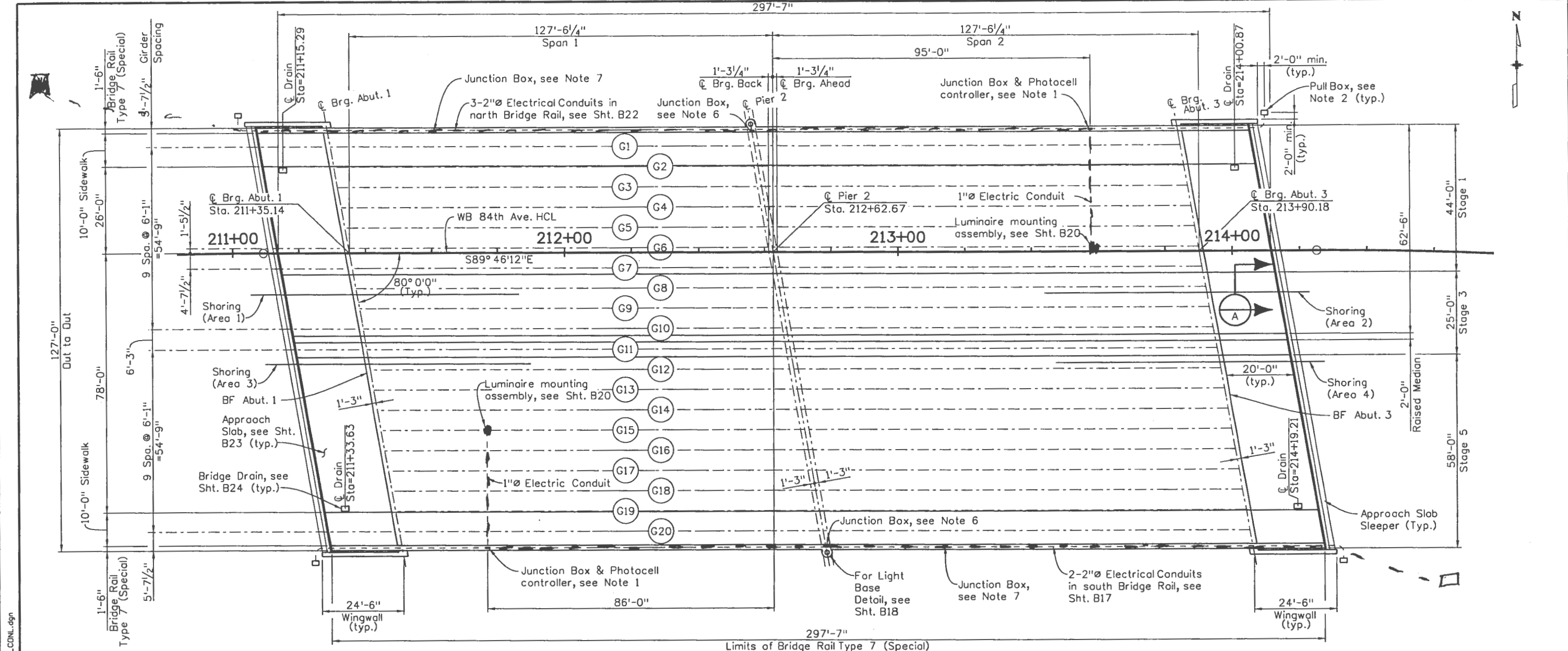
Revision Dates	
	(Preliminary Stage Only)

Quantities	

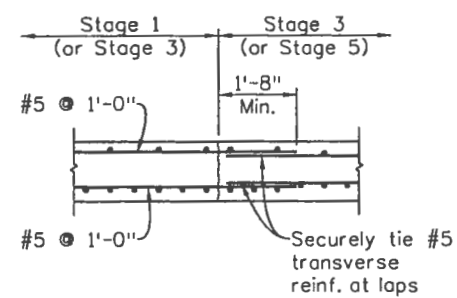
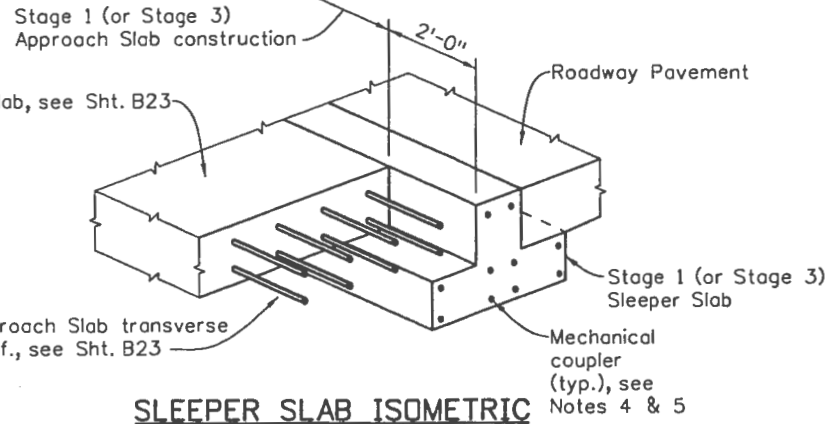
Detail	INITIAL	DATE

Design	INITIAL	DATE

Design	INITIAL	DATE



CONSTRUCTION LAYOUT



Notes:

- Nema 3RX Watertight Junction Box for underdeck luminaire, shall be flush with underside of Deck overhang.
- Pull Box per M-613-1, Sht. 4 of 4 (typ. at each corner of Bridge). Pull Boxes will not be paid for separately, but shall be included in the cost of Item 613 - 2 Inch Electrical Conduit.
- For Construction Staging, see Shts. B5 & B6.
- All approved Mechanical Couplers shall be capable of developing 125% of the reinforcing steel tensile strength. The contractor shall submit a certification of Mechanical Coupler to the engineer prior to installation.
- The cost of the Mechanical Couplers shall be included in the cost of Item 602 Reinforcing Steel.
- Junction Box in face of Bridge Rail for Roadway Lighting, see Sht. B18 (1 reqd. each side of bridge).
- Junction Box in face of Bridge Rail for Pedestrian Luminaire, see Structure Enhancement Plans (4 reqd. each side of bridge).
- Electrical Conduit:
North Bridge Rail:
1-2" Conduit for City of Thornton ITS
1-2" Conduit for Lighting
1-2" Conduit for future use
South Bridge Rail:
1-2" Conduit for Lighting
1-2" Conduit for future use

Print Date: 10/15/2010
 File Name: 17535BRDG_CDNL.dgn
 Horiz. Scale: 1:30
 Vert. Scale: As Noted

Sheet Revisions		
Date:	Comments	Init.

Colorado Department of Transportation
 4670 Holly Street
 Denver, CO 80216-6408
 Phone: 303-398-6780 FAX: 720-945-1028
 Region 6 JCS

As Constructed
No Revisions:
Revised:
Void:

84th AVENUE OVER I-25 CONSTRUCTION LAYOUT			
Designer: Alkanani/Beams	Structure Numbers	E-17-ACR	
Detailer: R. Dillon			
Sheet Subset: Bridge	Subset Sheets: B8 of 45		

Project No./Code
FBR 0253-209
17535
Sheet Number 131

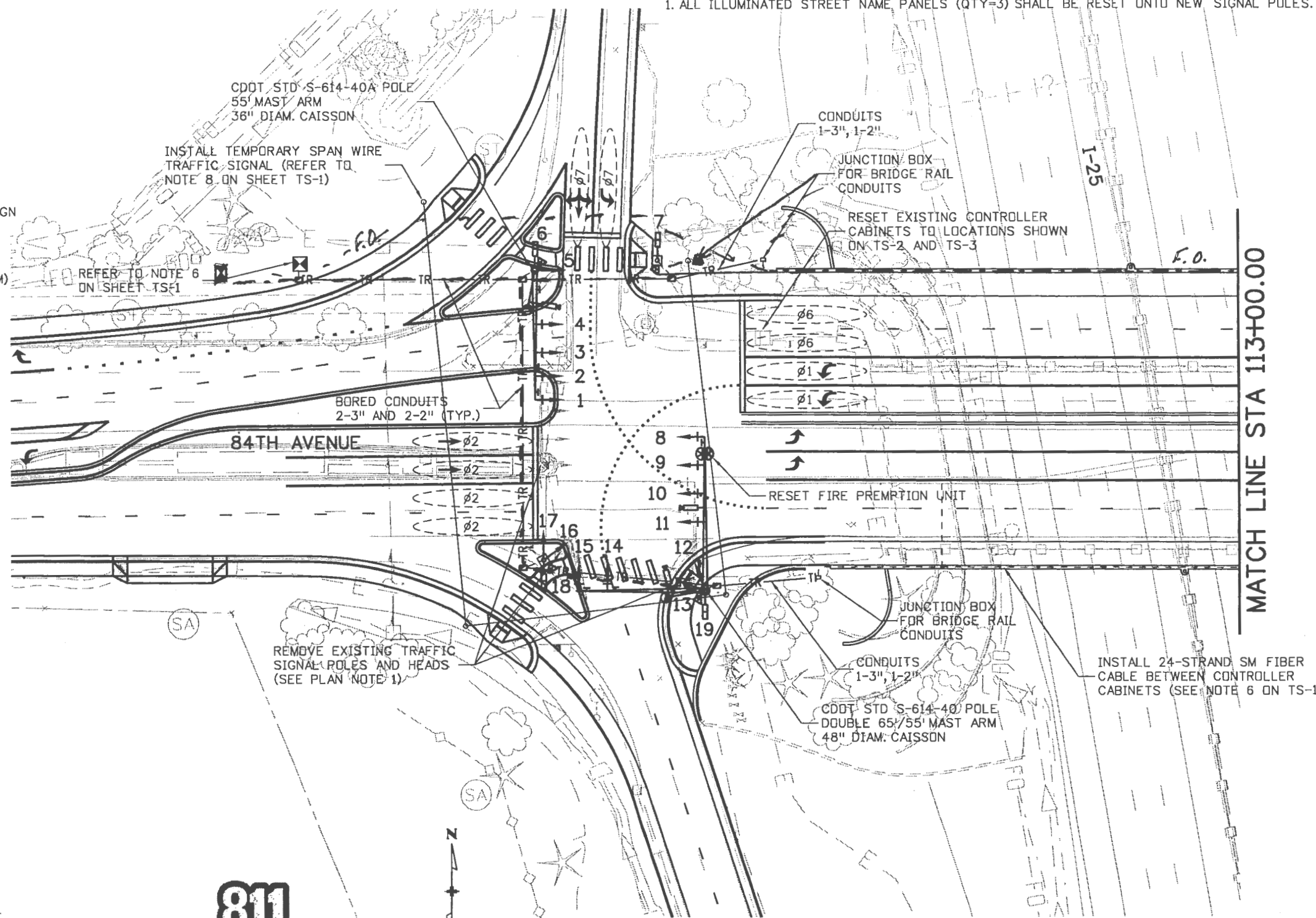
Ricelli 2:4:3:37 PM C:\Work\Project\Wire\KMA\Aster\Bridges\dms00145\17535BRDG_CDNL.dgn

LEGEND

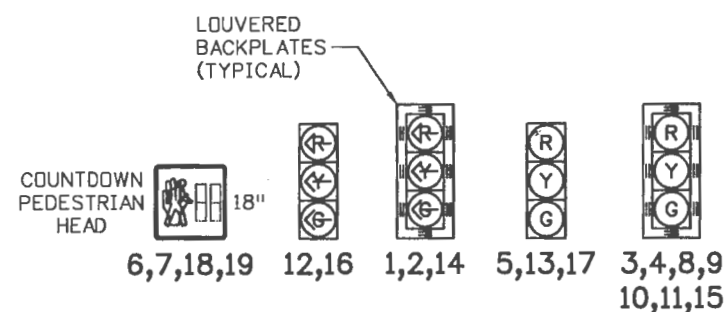
PROPOSED	DESCRIPTION
	TRAFFIC SIGNAL POLE WITH MAST ARM
	TRAFFIC SIGNAL PEDESTAL POLE
	TRAFFIC SIGNAL HEAD WITH BACKPLATE
	TRAFFIC SIGNAL HEAD
	PEDESTRIAN SIGNAL HEAD
	PEDESTRIAN PUSH BUTTON STATION AND R10-3e SIGN
	RESET TRAFFIC SIGNAL CONTROLLER AND CABINET
	PULL BOXES (SEPARATE TRAFFIC, ELECTRIC & COMM)
	CONDUIT - PVC SCHEDULE 80
	MAST ARM OR POLE MOUNTED SIGN
	LUMINAIRE - 400 WATT HPS
	RESET FIRE PREEMPTION UNIT
	VEHICLE DETECTION CAMERA
	VIDEO DETECTION ZONE (TYPICAL) AND ASSOCIATED PHASE NUMBER

PLAN NOTES:

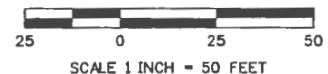
1. ALL ILLUMINATED STREET NAME PANELS (QTY=3) SHALL BE RESET ONTO NEW SIGNAL POLES.



PROPOSED SIGNAL HEADS



ALL VEHICLE SIGNAL HEADS SHALL BE POLYCARBONATE TYPE WITH 12-INCH SECTIONS AND TUNNEL VISORS.
 ALL SIGNAL HEADS SHALL BE BLACK IN COLOR.
 ALL SIGNAL INDICATIONS SHALL BE APPROVED L.E.D. TYPE.



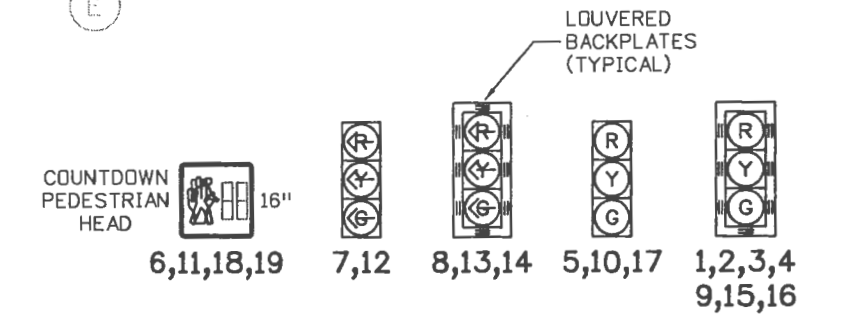
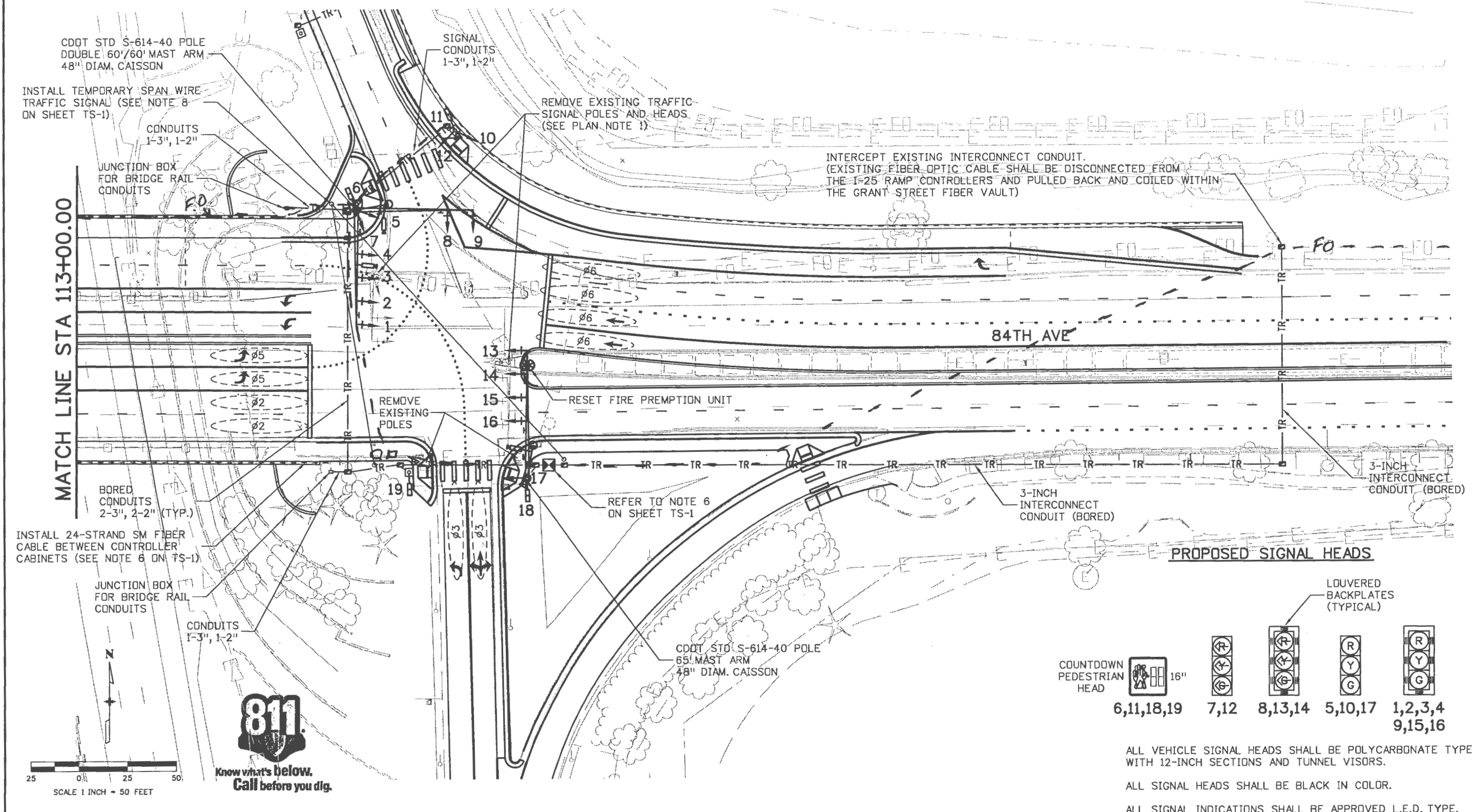
MATCH LINE STA 113+00.00

kat 10/29/19 AM C:\Work\Project\Wise\XMA\aduitamom\FASTER_Bridges\dms031517535TRAF_SignalPlan1.dgn

Print Date: 10/22/2010	Sheet Revisions			Colorado Department of Transportation		As Constructed		I-25/84TH AVENUE TRAFFIC SIGNAL PLAN		Project No./Code			
File Name: 17535TRAF_SignalPlan1.dgn	Date:	Comments	Init.	4670 Holly Street Denver, CO 80216-6408 Phone: 303-398-6780 FAX: 720-945-1028 Region 6		No Revisions:		Designer: LCL Detailer: LCL Sheet Subset: TRAFFIC		FBR 0253-209			
Horiz. Scale: 1:50	Unit Information					Revised:				Structure Numbers		17535	
Unit Leader Initials			Void:			Subset Sheets: TS-2 of 5				Sheet Number 212			

PLAN NOTES:

1. ALL ILLUMINATED STREET NAME PANELS (QTY=3) SHALL BE RESET ONTO NEW SIGNAL POLES.

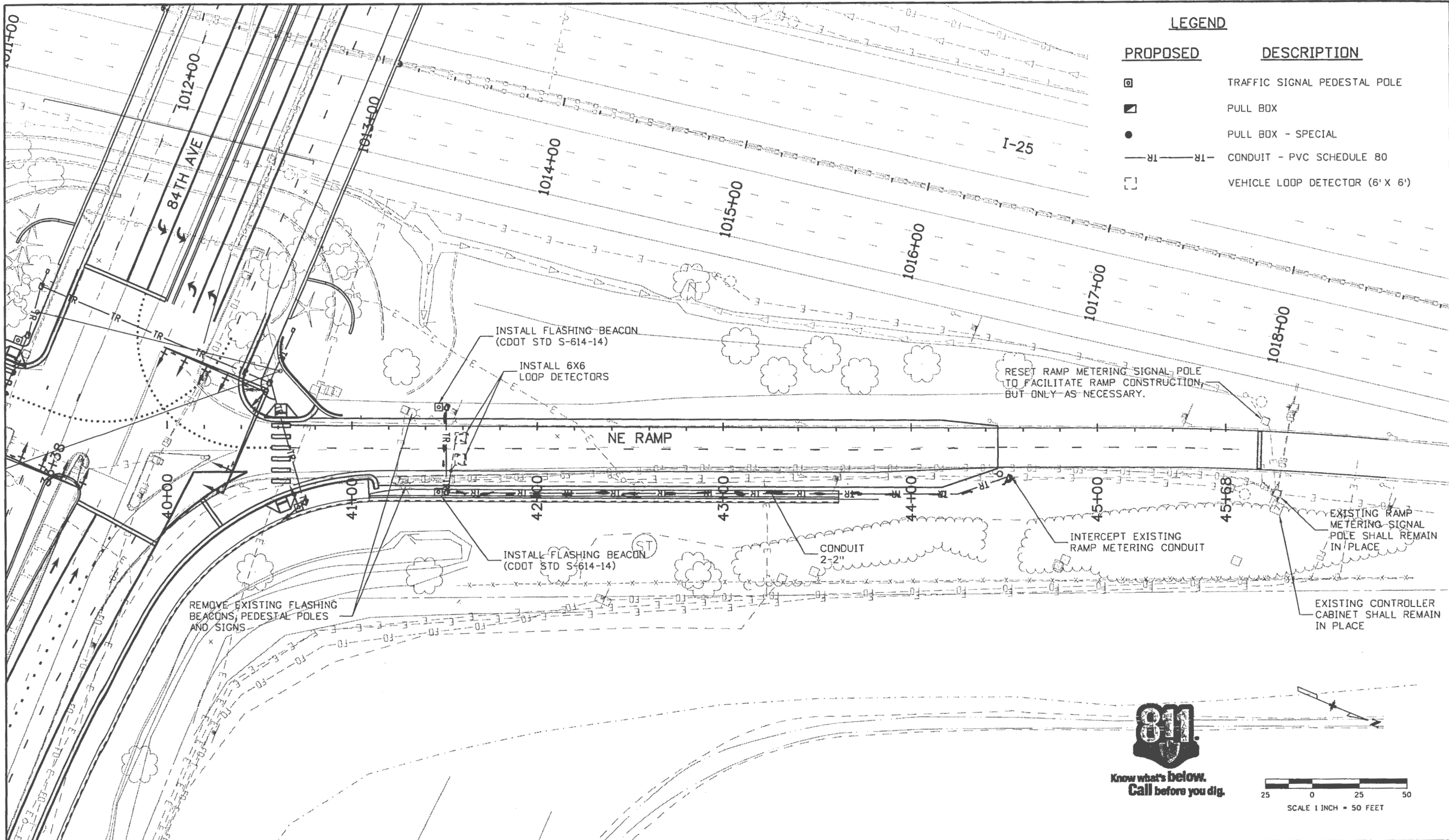


ALL VEHICLE SIGNAL HEADS SHALL BE POLYCARBONATE TYPE WITH 12-INCH SECTIONS AND TUNNEL VISORS.
 ALL SIGNAL HEADS SHALL BE BLACK IN COLOR.
 ALL SIGNAL INDICATIONS SHALL BE APPROVED L.E.D. TYPE.

Print Date: 10/22/2010	Sheet Revisions			Colorado Department of Transportation 4670 Holly Street Denver, CO 80216-6408 Phone: 303-398-6780 FAX: 720-945-1028 Region 6	As Constructed No Revisions: Revised: Void:	I-25/84TH AVENUE TRAFFIC SIGNAL PLAN		Project No./Code	
File Name: 17535TRAF_SignalPlan2.dgn	Date:	Comments	Init.					FBR 0253-209	
Horiz. Scale: 1:50	Unit Information				JCS	Designer: LCL	Structure: -	17535	
Vert. Scale: As Noted	Unit Leader Initials					Detailer: SYS	Structure Numbers:	Sheet Number 213	
					Sheet Subset: TRAFFIC	Subset Sheets: TS-3 of 5			

kat 10:31:19 AM C:\Work\Project\Wlae\X\Adultsman\FASTER_Bridges\dmso0315\17535TRAF_SignalPlan2.dgn

C:\Work\Project\Wise\AM\astiboo\FASTER Bridges\dms00315\17535TRAF_SignalPlan3.dgn
 Sun 12:24:13 PM




LEGEND

PROPOSED	DESCRIPTION
⊠	TRAFFIC SIGNAL PEDESTAL POLE
▣	PULL BOX
●	PULL BOX - SPECIAL
—TR—TR—	CONDUIT - PVC SCHEDULE 80
□	VEHICLE LOOP DETECTOR (6' X 6')

Print Date: 9/23/2010
File Name: 17535TRAF_SignalPlan3.dgn
Horiz. Scale: 1:50.0004 Vert. Scale: As Noted
Unit Information Unit Leader Initials

Sheet Revisions		
Date:	Comments	Init.

Colorado Department of Transportation

 4670 Holly Street
 Denver, CO 80216-6408
 Phone: 303-398-6780 FAX: 720-945-1028
Region 6 **JCS**

As Constructed
No Revisions:
Revised:
Void:

I-25/84TH AVENUE RAMP METER PLAN (NE RAMP)		
Designer: LCL	Structure Numbers	
Detailer: SYS		
Sheet Subset: TRAFFIC	Subset Sheets: TS-4 of 5	

Project No./Code
FBR 0253-209
17535
Sheet Number 214

LEGEND

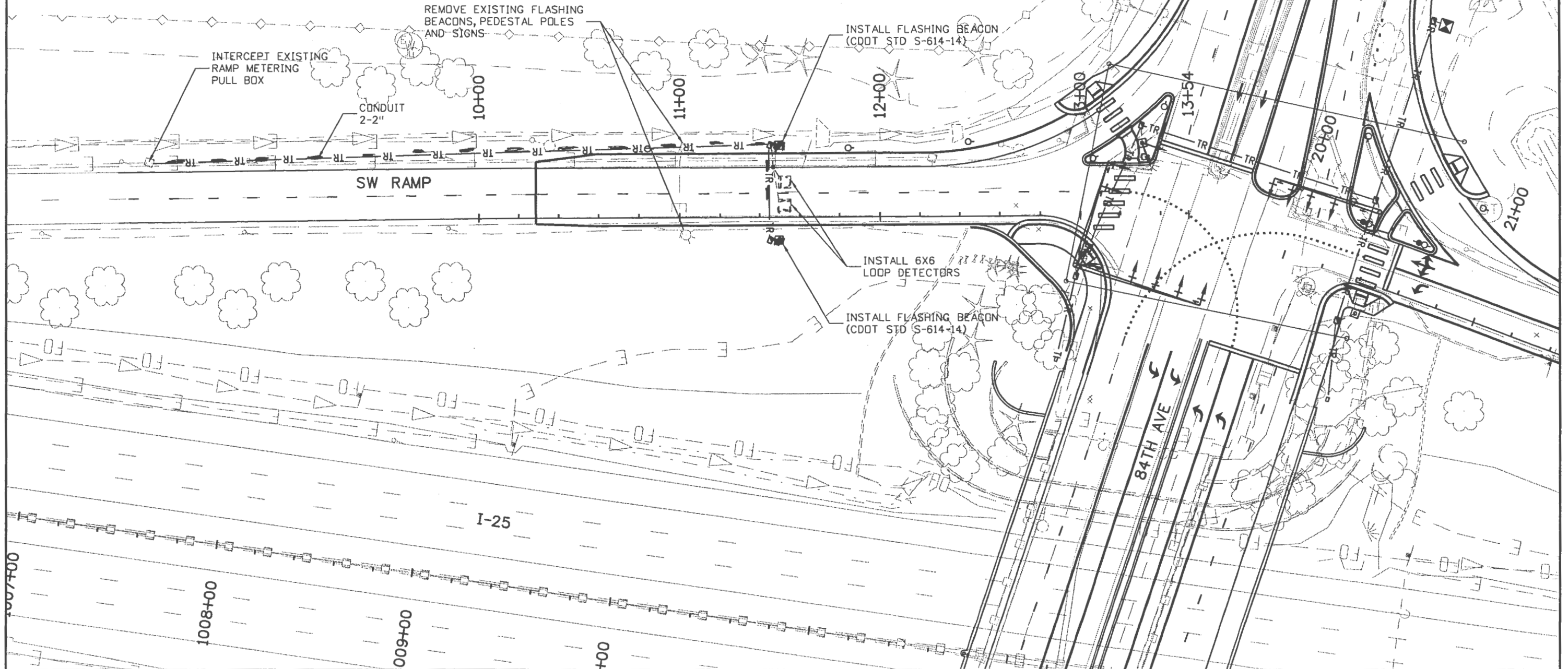
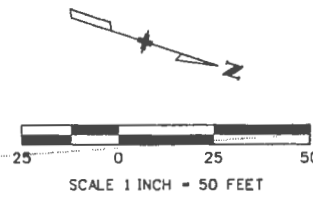
PROPOSED

DESCRIPTION

- ☐ TRAFFIC SIGNAL PEDESTAL POLE
- ▣ PULL BOX
- PULL BOX - SPECIAL
- TR — TR — CONDUIT - PVC SCHEDULE 80
- VEHICLE LOOP DETECTOR (6' X 6')



Know what's below.
Call before you dig.



Print Date: 9/23/2010
File Name: 17535TRAF_SignalPlan4.dgn
Horiz. Scale: 1:50 Vert. Scale: As Noted
Unit Information Unit Leader Initials

Sheet Revisions		
Date:	Comments	Init.

Colorado Department of Transportation

4670 Holly Street
Denver, CO 80216-6408
Phone: 303-398-6780 FAX: 720-945-1028

Region 6 JCS

As Constructed
No Revisions:
Revised:
Void:

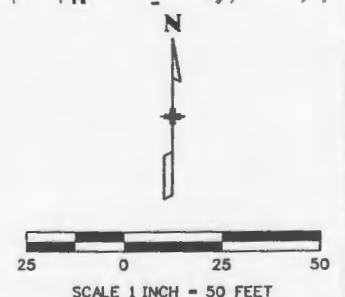
I-25/84TH AVENUE RAMP METER PLAN (SW RAMP)		
Designer:	LCL	Structure Numbers
Detailer:	LCL	
Sheet Subset:	TRAFFIC	Subset Sheets: TS-5 of 5

Project No./Code
FBR 0253-209
17535
Sheet Number 215

S:\an 12:24:52 PM C:\Work\Project\Wise\X\shiboo\FASTER Bridges\dms0315\17535TRAF_SignalPlan4.dgn



Know what's below.
Call before you dig.



Scanlon Szynskie
Scanlon Szynskie Group, Inc.
3045 S. Parker Road, Suite 225
Aurora, Co 80014-2950
303.696.3602 fax 303.696.0812
www.szynskie.com
SSG Project Number: 09036.01

Print Date: 9/24/2010
File Name: 17535UTILLTGPLAN2.dgn
Horiz. Scale: 1:50
Unit Information
Vert. Scale: As Noted
Unit Leader Initials

Sheet Revisions		
Date:	Comments	Init.

Colorado Department of Transportation

 4670 Holly Street
 Denver, CO 80216-6408
 Phone: 303-398-6780 FAX: 720-945-1028
 Region 6 JCS

As Constructed
No Revisions:
Revised:
Void:

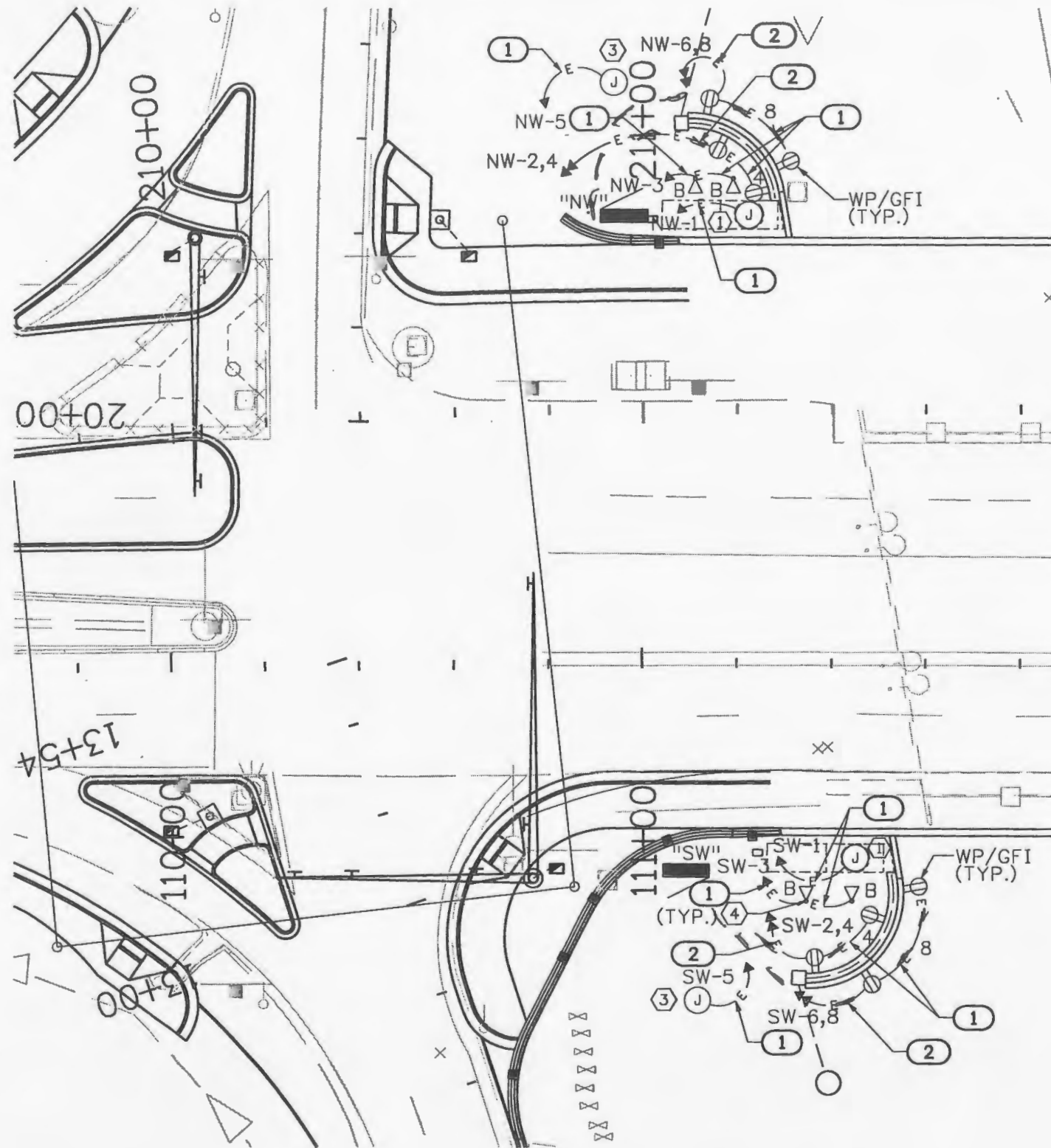
I-25/84TH AVENUE LIGHTING ENHANCEMENTS PLAN		
Designer: KBM	Structure Numbers	
Detailer: ADC		
Sheet Subset: UTILITY	Subset Sheets: LE-2 of 7	

Project No./Code
FBR 0253-209
17535
Sheet Number 295

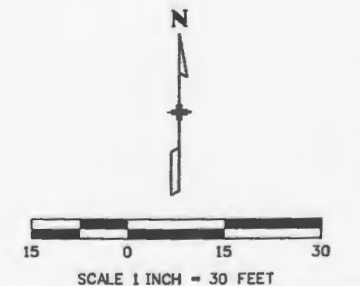
C:\Work\Project\17535\17535\UTILLTGPLAN2.dgn



Know what's below.
Call before you dig.



Scanlon Szynskie Group, Inc.
3045 S. Parker Road, Suite 225
Aurora, Co 80014-2950
303.696.3603 fax 303.696.0812
www.ssgroupinc.com
SSG Project Number: 09036.01



Print Date: 9/24/2010
File Name: 17535UTILLTGPlan4.dgn
Horiz. Scale: 1:30.0086 Vert. Scale: As Noted
Unit Information Unit Leader Initials

Sheet Revisions		
Date:	Comments	Init.

Colorado Department of Transportation

 4670 Holly Street
 Denver, CO 80216-6408
 Phone: 303-398-6780 FAX: 720-945-1028
 Region 6 JCS

As Constructed
No Revisions:
Revised:
Void:

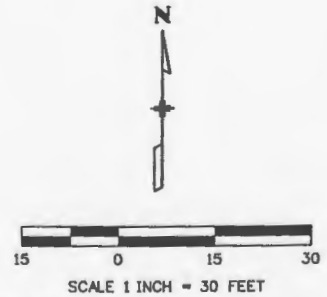
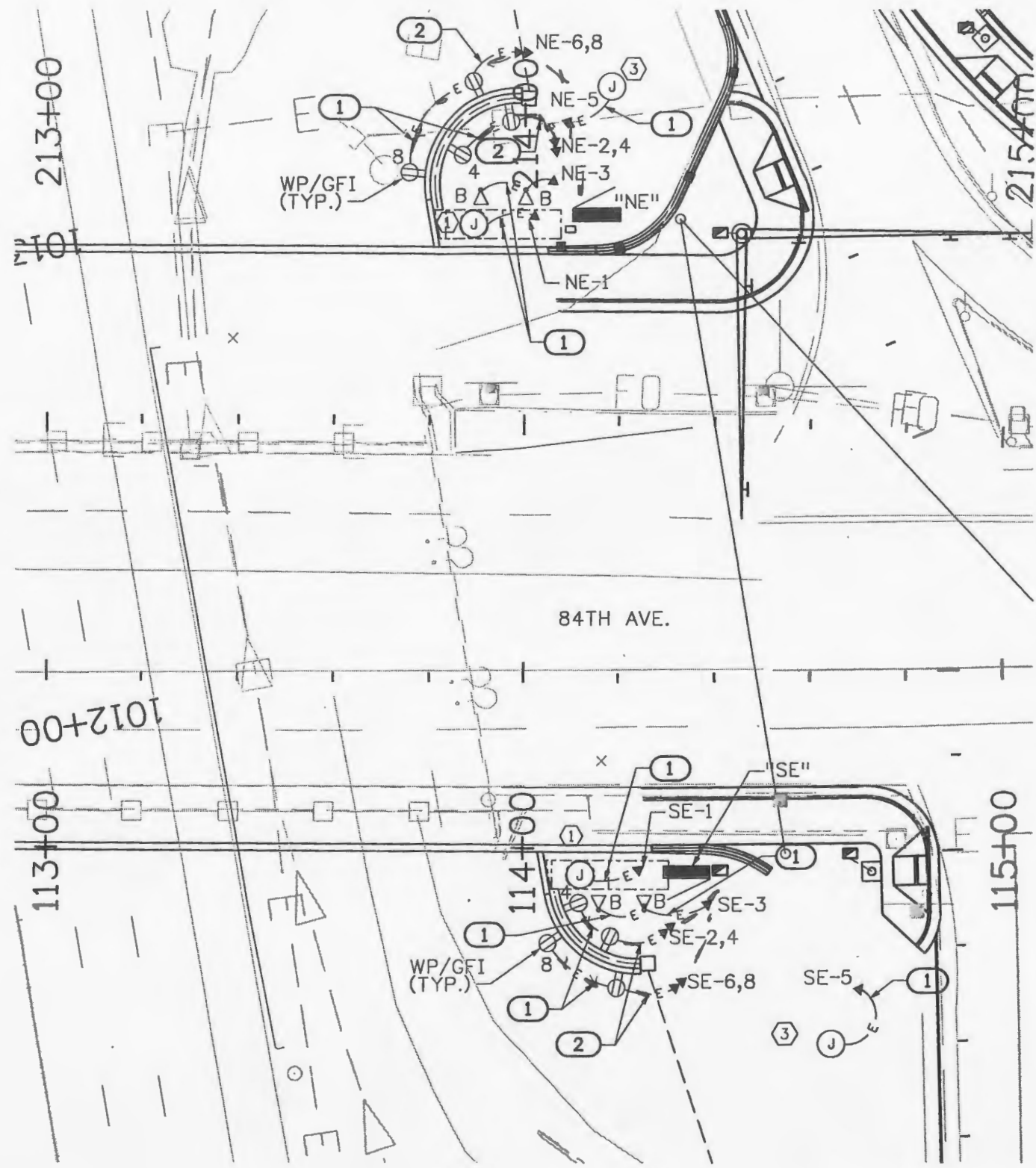
I-25/84TH AVENUE LIGHTING ENHANCEMENTS PLAN	
Designer: KBM	Structure Numbers
Detailer: ADC	
Sheet Subset: UTILITY	Subset Sheets: LE-3 of 7

Project No./Code
FBR 0253-209
17535
Sheet Number 296

amy 11:16:42 AM C:\Work\Project\Wise\Kevin\FASTER Bridges\dms00326\17535UTILLTGPlan4.dgn



Know what's below.
Call before you dig.



Scanlon Szynskie
Scanlon Szynskie Group, Inc.
3045 S. Parker Road, Suite 225
Aurora, CO 80014-2950
303.696.2602 fax: 303.696.0812
www.ssgroupinc.com
SSG Project Number: 09036.01

Print Date: 9/24/2010
File Name: 17535UTILLTGPlan3.dgn
Horiz. Scale: 1:30.0086 Vert. Scale: As Noted
Unit Information Unit Leader Initials

Sheet Revisions		
Date:	Comments	Init.

Colorado Department of Transportation

 4670 Holly Street
 Denver, CO 80216-6408
 Phone: 303-398-6780 FAX: 720-945-1028
 Region 6 JCS

As Constructed
 No Revisions:
 Revised:
 Void:

I-25/84TH AVENUE
 LIGHTING ENHANCEMENTS PLAN
 Designer: KBM Structure
 Detailer: ADC Numbers
 Sheet Subset: UTILITY Subset Sheets: LE-4 of 7

Project No./Code
 FBR 0253-209
 17535
 Sheet Number 297

any 11:20:26 AM C:\Work\Project\17535\17535UTILLTGPlan3.dgn