


Colorado Department of Transportation




Region 6
2000 S. Holly
Denver, CO 80222
Phone: 303-757-9923 Fax: 303-757-9390

Region 6
SLK

Sheet Revisions		
Date	Description	Initials
mm/dd/yy		

Sheet Revisions		
Date	Description	Initials
mm/dd/yy		

Sheet Revisions		
Date	Description	Initials
mm/dd/yy		



PARTNERSHIP

12265 W. Bayaud Avenue, Suite 130
Lakewood, Colorado 80228
P:303.989.1461 F: 303.989.4094

CIVIL ENGINEERING
& SURVEYING

Land Survey Control Diagram

Monument Coordinate Tables

Project Number: FBR 0404-050

Project Location: US 40 / SAND CREEK - ADAMS & ARAPAHOE

COUNTIES - S4, T4S, R66W, 6TH P.M. & S33, T3S, R66W, 6TH P.M.

Project Code	Last Mod. Date	Subset	Sheet No.
18180	1-31-2013	4.02 of 4.05	4.02

GEODETIC COORDINATE SUMMARY TABLE OF FOUND NATIONAL GEODETIC SURVEY (NGS) CONTROL POINTS (HELD FIXED U.S. FEET)

POINT NO.	GEODETIC COORDINATES - NAD 83 (2007)		ELLIPSOID HEIGHT	MAPPING ANGLE	NAD 83 (2007) ZONE 502		POINT NO.	PROJECT COORDINATES		NAVD 88 ELEVATION	DESCRIPTION
	LATITUDE	LONGITUDE			NORTHING	EASTING		NORTHING	EASTING		
CENTER *	39° 42' 20.42468" N	104° 48' 52.04862" W	5462.13	0°25'56.5"	1682648.53	3192882.13	CENTER	683083.28	193707.07	5519.9	FOUND 1/2" STAINLESS STEEL ROD IN NGS MONUMENT BOX (PID AA8175)
J 392 *	39° 45' 14.29621" N	104° 53' 00.96587" W	5255.92	0°23'19.5"	1700102.00	3173309.01	J 392	700541.26	174128.89	5313.08	FOUND 1/2" STAINLESS STEEL ROD IN NGS MONUMENT BOX (PID KK1544)
PENA *	39° 46' 20.23319" N	104° 47' 26.65254" W	5356.27	0°26'50.4"	1706964.25	3199366.66	PENA	707405.28	200193.28	5414.53	FOUND 1/2" STAINLESS STEEL ROD IN NGS MONUMENT BOX (PID AE5246)
Z 406 *	39° 43' 57.70941" N	104° 48' 35.13981" W	5361.68	0°26'07.2"	1692502.02	3194128.82	Z 406	692939.31	194954.08	5419.54	FOUND 1/2" STAINLESS STEEL ROD IN NGS MONUMENT BOX (PID KK1514)

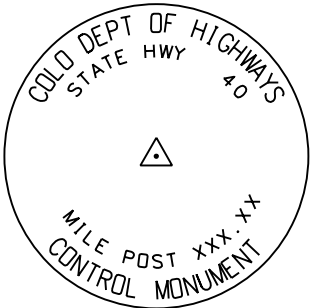
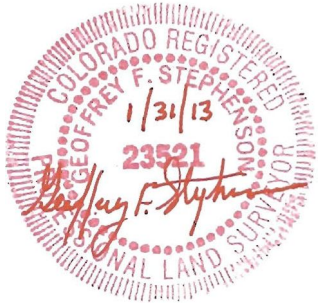
*Denotes Control Points Not Shown On Diagram

GEODETIC COORDINATE SUMMARY TABLE OF SET SECONDARY SURVEY CONTROL POINTS (ADJUSTED FIELD DATA U.S. FEET):

POINT NO.	GEODETIC COORDINATES - NAD 83 (2007)		ELLIPSOID HEIGHT	MAPPING ANGLE	NAD 83 (2007) ZONE 502		POINT NO.	PROJECT COORDINATES		NAVD 88 ELEVATION	DESCRIPTION
	LATITUDE	LONGITUDE			NORTHING	EASTING		NORTHING	EASTING		
CM 308.14	39° 44' 25.52996" N	104°46'52.52054"W	5372.72	0°27'11.9"	1695379.14	3202123.47	CM 308.14	695817.18	202950.81	5430.85	SET CDOT TYPE II MONUMENT - FLUSH
CM 308.24	39° 44' 25.34155" N	104°46'49.09953"W	5374.59	0°27'14.1"	1695362.20	3202390.86	CM 308.24	695800.23	203218.26	5432.71	SET CDOT TYPE II MONUMENT - FLUSH
CM 308.44	39° 44' 24.02405" N	104°46'30.93714"W	5378.56	0°27'25.5"	1695240.17	3203810.66	CM 308.44	695678.17	204638.43	5436.75	SET CDOT TYPE II MONUMENT - FLUSH
CM 307.94	39° 44' 25.30448" N	104° 47' 06.77943" W	5368.30	0°27'02.9"	1695347.54	3201009.83	CM 307.94	695785.57	201836.87	5426.42	SET CDOT TYPE II MONUMENT - FLUSH
RM 109.55	39° 44' 25.27432" N	104° 46' 55.41518" W	5374.85	0°27'10.1"	1695351.49	3201897.57	RM 109.55	695789.52	202724.84	5432.85	FOUND 3 1/4" ALUMINUM CAP STAMPED (1991 RM109.55 PLS 27258)

ALIQUOT CORNERS TABULATION PROJECT SPECIFIC COORDINATES (U.S. FEET):

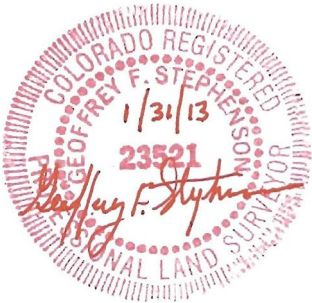
POINT NO.	PROJECT COORDINATES		LOCATION	DESCRIPTION
	NORTHING	EASTING		
7000	695681.68	200142.11	NW CORNER SECTION 4, T. 4 S., R. 66 W. 6TH P.M.	FOUND 3 1/2" ILLEGIBLE BRASS CAP IN RANGE BOX
7004	695699.80	202787.86	N 1/4 SECTION 4, T. 4 S., R. 66 W. 6TH P.M.	FOUND 3" BRASS CAP 0.65' BELOW ASPHALT IN RANGE BOX STAMPED IN PART "1/4 4 - 33 - T4S - LS 16419 - 1991"
7005	695718.07	205431.93	NE CORNER SECTION 4, T. 4 S., R. 66 W. 6TH P.M.	FOUND 3" BRASS CAP IN RANGE BOX DOWN 0.6' STAMPED IN PART "NE SEC 4 - LS 16419 - 2008"
7006	698367.63	205438.39	E 1/4 SECTION 33, T. 3 S., R. 66 W. 6TH P.M.	FOUND 2 1/2" ALUMINUM CAP IN RANGE BOX DOWN 0.6' STAMPED IN PART "1/4-33-PLS-23501 - 1996"
7007	698349.67	202780.05	CENTER 1/4 SECTION 33, T. 3 S., R. 66 W. 6TH P.M.	FOUND 3" BRASS CAP ON 2" IRON PIPE 0.5' ABOVE GROUND STAMPED IN PART "CSEC 33 - PLS 2132 - 1982"
7008	698340.61	201449.23	CENTER W 1/16 CORNER SECTION 33, T. 3 S., R. 66 W. 6TH P.M.	FOUND 3" BRASS CAP ON 2" IRON PIPE 0.5' ABOVE GROUND STAMPED IN PART "WC-C SEC 33 - PLS 2132 - 1982"
7009	698332.37	200118.49	W 1/4 CORNER SECTION 33, T. 3 S, R. 66 W. 6TH P.M.	FOUND 3" BRASS CAP IN RANGE BOX DOWN 0.5' STAMPED IN PART "32-33-PLS 19614 - 1989"
7013	693056.68	202813.49	CENTER 1/4 SECTION 4, T. 4 S. ,R. 66 W. 6TH P.M.	FOUND #5 REBAR WITH NO CAP DOWN 0.7' - ATTACHED 3 1/4" ALUMINUM CAP
7014	693076.62	205453.12	E 1/4 CORNER SECTION 4, T. 4 S., R. 66 W. 6TH P.M.	FOUND 3" BRASS CAP IN RANGE BOX DOWN 0.5' STAMPED IN PART "4-3-PLS 15244-T4S-2000"
7015	694394.05	205442.57	N 1/16 CORNER SECTION 4 & 3, T. 4 S. R. 66 W. 6TH P.M.	FOUND 3" BRASS CAP IN RANGE BOX DOWN 2.0' STAMPED IN PART "N 1/16-4-3-PLS 16848-T4S-R66W-2004"



TYPICAL CDOT TYPE II MONUMENT

FOUND PROPERTY EVIDENCE TABULATION PROJECT SPECIFIC COORDINATES (U.S. FEET):

PROJECT COORDINATES			DESCRIPTION
POINT NO.	NORTHING	EASTING	
300	696096.52	200806.87	FOUND 1 1/4" RED PLASTIC CAP STAMPED "G.M.A. ENGR. 2432" DOWN 0.8'
301	695838.12	204459.42	FOUND 1 1/4" YELLOW PLASTIC CAP STAMPED "LS 20699" FLUSH WITH GROUND
302	695840.64	204838.94	FOUND CHISELED "X" IN CONCRETE PAN
303	696272.65	204835.84	FOUND 1" BRASS TAG AND NAIL IN CONCRETE STAMPED "CR MOORE LS 10945"
304	696270.33	204456.30	FOUND CHISELED "X" IN CONCRETE ROAD
305	696274.16	205083.16	FOUND CHISELED "X" IN CONCRETE ROAD
306	696338.90	205240.91	FOUND CHISELED "X" IN CONCRETE ROAD
307	696153.04	205377.97	FOUND 1 1/4" YELLOW PLASTIC CAP STAMPED "LS 20699" DOWN 0.3'
308	696020.50	205377.54	FOUND 1 1/4" ORANGE PLASTIC CAP STAMPED "BARNES LS 19587" BENT TO SOUTH, DOWN 0.4'
309	695869.33	205377.46	FOUND CHISELED "X" IN CONCRETE SIDEWALK
310	695844.43	205352.53	FOUND1 1/4" YELLOW PLASTIC CAP STAMPED "LS 20699" DOWN 0.1'
311	695843.33	205172.50	FOUND 1 1/4" YELLOW PLASTIC CAP STAMPED "LS 20699" DOWN 0.1'
312	695842.29	205018.33	FOUND 1 1/2" ALUMINUM CAP STAMPED "R.W.C. INC. LS ?6412 DOWN 0.6'
313	695641.70	204939.27	FOUND 3" DIA. STEEL POST WITH INVERTED MAG. NAIL CONCRETED IN CENTER UP 1.4'
314	695640.83	204785.45	FOUND 3" DIA. STEEL POST WITH INVERTED MAG. NAIL CONCRETED IN CENTER UP 2.2'
315	695432.56	204324.64	FOUND 1 1/4" YELLOW PLASTIC CAP STAMPED "ROBINSON 2132" FLUSH WITH GROUND
316	695467.72	204052.72	FOUND 1 1/4" YELLOW PLASTIC CAP STAMPED "ROBINSON 2132" DOWN 0.2'
317	695493.25	203986.40	FOUND 3/4" BRASS TAG WITH NAIL IN CONC. IN CENTER OF CHISELED "X" STAMPED "LS 23515
318	695585.83	203910.61	FOUND 3/4" BRASS DISC AND NAIL IN CONC. SIDEWALK STAMPED "LS 2132"
319	695634.71	203910.29	FOUND 1 1/4" YELLOW PLASTIC CAP STAMPED "LS 23515 FLUSH WITH GROUND
320	695629.16	203105.74	FOUND #5 REBAR, BENT NE SHOT WHERE ENTERS GROUND, FLUSH WITH GROUND
321	695578.55	202592.95	FOUND #5REBAR, FLUSH WITH GROUND
322	695625.59	202592.76	FOUND #5 REBAR WITH BROKEN YELLOW PLASTIC CAP, FLUSH WITH GROUND
323	695623.35	202272.77	FOUND 1 1/4" YELLOW PLASTIC CAP STAMPED "ROBINSON 2132" FLUSH WITH GROUND
324	695618.83	201627.78	FOUND 1" YELLOW PLASTIC CAP STAMPED "ROBINSON 2132" FLUSH WITH GROUND
325	695618.73	201627.86	FOUND 1 1/4" YELLOW PLASTIC CAP, ILLEGIBLE, FLUSH WITH GROUND
326	695592.02	201627.86	FOUND 1" YELLOW PLASTIC CAP STAMPED "ROBINSON 2132" DOWN 0.2'
327	695591.88	201627.90	FOUND 1 1/4" YELLOW PLASTIC CAP, ILLEGIBLE, DOWN 0.3'
328	695590.95	201494.36	FOUND 1" YELLOW PLASTIC CAP STAMPED "ROBINSON 2132" DOWN 0.1'
329	695590.51	201427.85	FOUND #4 REBAR, UP 0.1'





Region 6
2000 S. Holly
Denver, CO 80222
Phone: 303-757-9923 Fax: 303-757-9390

Region 6 SLK

Sheet Revisions

Date	Description	Initials
mm/dd/yy		

Sheet Revisions

Date	Description	Initials
mm/dd/yy		

Sheet Revisions

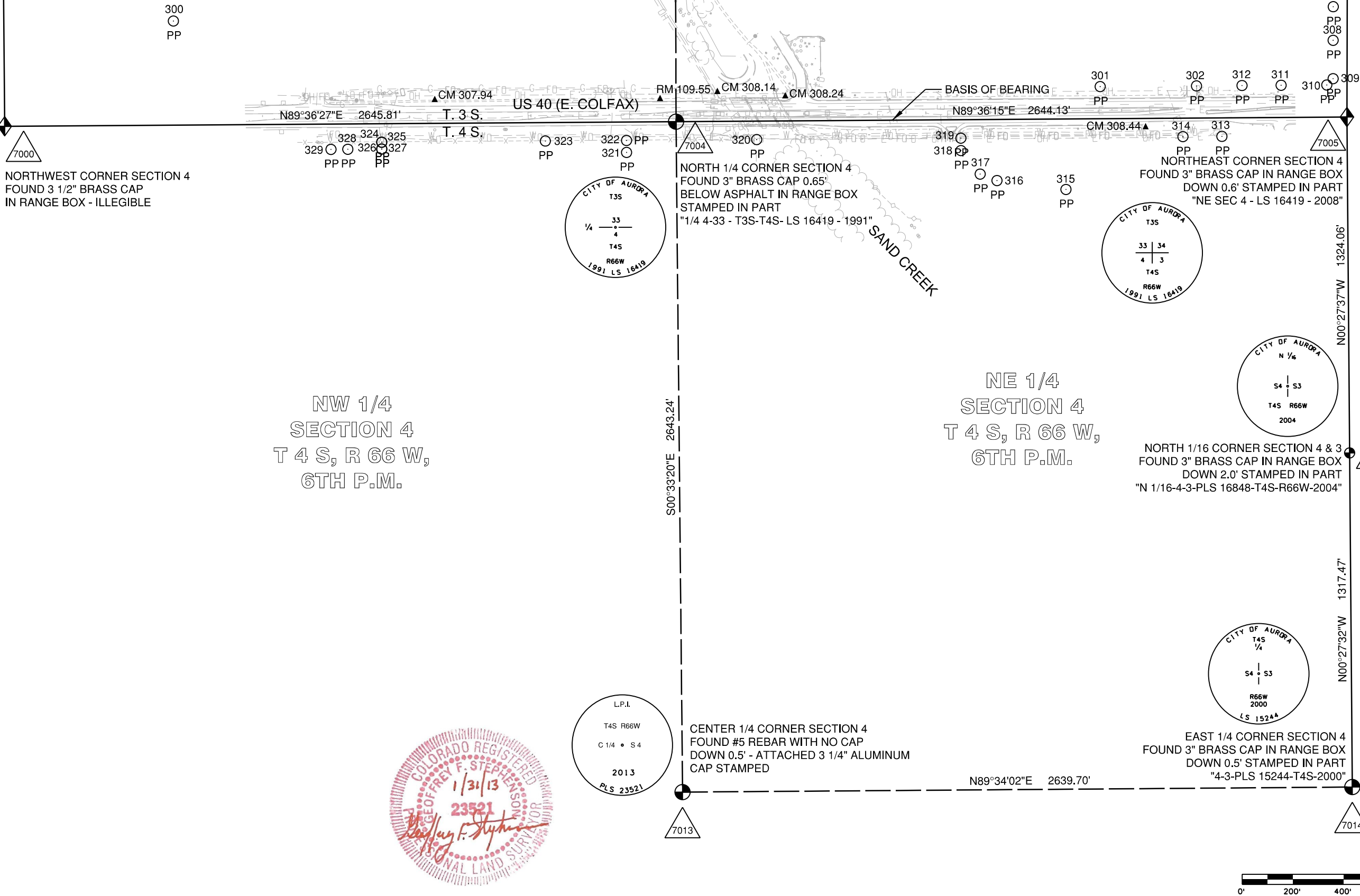
Date	Description	Initials
mm/dd/yy		



Land Survey Control Diagram

Plan Sheet

Project Number: FBR 0404-050			
Project Location: US 40 / SAND CREEK - ADAMS & ARAPAHOE			
COUNTIES - S4, T4S, R66W, 6TH P.M. & S33, T3S, R66W, 6TH P.M.			
Project Code	Last Mod. Date	Subset	Sheet No.
18180	1-31-2013	4.04 of 4.05	4.04





Region 6
2000 S. Holly
Denver, CO 80222
Phone: 303-757-9923 Fax: 303-757-9390

Region 6

SLK

Sheet Revisions

Date	Description	Initials
mm/dd/yy		

Sheet Revisions

Date	Description	Initials
mm/dd/yy		

Sheet Revisions

Date	Description	Initials
mm/dd/yy		



Land Survey Control Diagram

Plan Sheet

Project Number: FBR 0404-050			
Project Location: US 40 / SAND CREEK - ADAMS & ARAPAHOE			
COUNTIES - S4, T4S, R66W, 6TH P.M. & S33, T3S, R66W, 6TH P.M.			
Project Code	Last Mod. Date	Subset	Sheet No.
18180	1-31-2013	4.05 of 4.05	4.05

