

CONTROL AND MONUMENTATION SHEET

RIGHT OF WAY
WEST OF PASS CREEK

TABULATION OF R.O.W. MARKERS SET

SURVEY CONTROL POINT TABULATION

PNT. NO.	NORTH	EAST	PNT. NO.	NORTH	EAST
PNT 301	2040.875	33549.739	PNT 378	11745.353	31680.795
PNT 302	2044.464	33549.739	PNT 379	11613.133	31680.795
PNT 303	2499.218	33737.242	PNT 380	11986.449	31776.774
PNT 304	2612.807	33455.378	PNT 381	11830.512	32145.126
PNT 305	2751.081	33828.318	PNT 382	11850.004	32099.082
PNT 306	2830.616	33539.034	PNT 383	11886.223	32114.415
PNT 307	3544.222	33771.295	PNT 384	12022.660	31792.106
PNT 308	3424.098	33496.355	PNT 385	12133.066	32211.372
PNT 309	3831.176	33731.244	PNT 386	12244.526	31879.594
PNT 310	3628.286	33386.518	PNT 387	12717.754	32307.013
PNT 311	4031.707	33259.094	PNT 388	12717.816	31957.013
PNT 312	3854.179	33253.568	PNT 389	12929.766	32298.536
PNT 313	4194.076	33464.475	PNT 390	12908.461	31949.185
PNT 314	4038.021	33151.190	PNT 391	13060.799	32290.545
PNT 315	4520.631	33335.524	PNT 392	13039.494	31941.194
PNT 316	4457.319	33011.299	PNT 393	13284.410	32286.109
PNT 317	4704.949	33330.587	PNT 394	13308.887	31936.966
PNT 318	4665.802	32982.783	PNT 395	13597.397	32378.794
PNT 319	4720.337	33328.855	PNT 396	13766.980	32072.621
PNT 320	4681.190	32981.051	PNT 397	13782.536	32504.274
PNT 321	4936.796	33324.416	PNT 398	13950.632	32222.856
PNT 322	4868.961	32955.602	PNT 399	13888.708	32520.598
PNT 323	5637.580	33015.637	PNT 400	14067.076	32279.383
PNT 324	5411.186	32716.887	PNT 401	14059.884	32641.489
PNT 325	5786.931	32858.893	PNT 402	14222.461	32389.350
PNT 326	5556.681	32935.292	PNT 403	14644.364	32879.845
PNT 327	5908.051	32840.445	PNT 404	14638.078	32584.703
PNT 328	5577.801	32576.844			
PNT 329	5948.234	32724.989			
PNT 330	5743.071	32441.426			
PNT 331	6106.852	32633.447			
PNT 332	5963.972	32313.939			
PNT 333	6276.954	32569.831			
PNT 334	6163.908	32238.590			
PNT 335	6498.239	32494.311			
PNT 336	6385.194	32163.070			
PNT 337	6696.135	32422.788			
PNT 338	6585.932	32097.917			
PNT 339	7058.230	32235.194			
PNT 340	6867.940	31941.443			
PNT 341	7230.807	32114.758			
PNT 342	7025.404	31831.369			
PNT 343	7613.902	31837.089			
PNT 344	7490.397	31494.339			
PNT 345	7725.142	31818.213			
PNT 346	7715.471	31346.244			
PNT 347	7917.839	31719.972			
PNT 348	8477.918	31238.514			
PNT 349	8387.018	31653.679			
PNT 350	8735.812	31318.451			
PNT 351	8599.389	31694.685			
PNT 352	8866.927	31366.001			
PNT 353	8731.104	31742.235			
PNT 354	9086.519	31435.057			
PNT 355	9252.354	31728.115			
PNT 356	9274.394	31453.530			
PNT 357	9280.251	31753.473			
PNT 358	9503.230	31428.567			
PNT 359	9548.188	31725.179			
PNT 360	9924.881	31364.657			
PNT 361	9777.331	31710.705			
PNT 362	10165.942	31338.099			
PNT 363	10177.355	31687.913			
PNT 364	10405.786	31356.472			
PNT 365	10341.226	31700.466			
PNT 366	10639.969	31419.456			
PNT 367	10535.444	31753.458			
PNT 368	9969.839	31661.270			
PNT 369	10665.081	31794.033			
PNT 370	10769.626	31460.011			
PNT 371	11081.082	31892.952			
PNT 372	11138.077	31547.623			
PNT 373	11235.250	31918.413			
PNT 374	11292.344	31573.084			
PNT 375	11227.208	31967.745			
PNT 376	11496.570	31610.427			
PNT 377	11411.436	32001.262			

PNT. NO.	NORTHING	EASTING	ELEV.
PNT 696	00731.91	32050.81	
PNT 700	02477.91	33664.27	9894.89 / CDOH T-15
PNT 701	02960.36	33765.69	9863.67
PNT 702	03960.20	33615.36	9824.03
PNT 703	04155.42	33216.44	9783.99
PNT 704	04918.95	33096.70	9730.42
PNT 706	5517.929	32837.249	9689.20
PNT 707	6089.759	32394.011	9642.08
PNT 709	6744.954	32190.972	9623.16
PNT 710	7342.790	31802.440	9595.80
PNT 712	8250.568	31268.197	9564.85
PNT 713	8633.751	31648.475	9552.22
PNT 715	9466.287	31620.063	9532.44
PNT 716	10208.851	31474.613	9503.26
PNT 717	10812.197	31692.254	9469.41
PNT 719	11512.158	31725.474	9437.89
PNT 721	12381.650	32111.209	9400.13
PNT 723	13480.288	32168.418	9362.49
PNT 724	14332.608	32721.769	9305.80
PNT 726	15042.860	32797.910	9263.55
PNT 727	15684.730	32681.110	9223.01
PNT 736	20301.220	31919.700	
PNT 730	16445.690	32540.160	9195.74
PNT T-122	15803.430	32953.100	9216.20

GENERAL NOTES

1. This Right of Way plan is not a complete boundary survey of all adjoining owners and is prepared for Highway Department purposes only.
2. Field survey control precision computed to exceed 1:20000.
3. NOTICE: According to Colorado law you must commence any legal action based upon any defect in this survey within three years after you first discover such defect. In no event, may any action based upon any defect in this survey be commenced more than ten years from the date of the certification shown hereon.
4. All R.O.W. Markers set from survey control points.
5. All centerline and offset stationing is theoretical only and may not represent the centerline as constructed in the field.
6. All coordinates listed are PROJECT COORDINATES ONLY.

QUANTITY OF MONUMENTS SET

CAP TYPE	MONUMENT TYPE							
	1	1A	2	2A	3	3A	4	5
REFERENCE						4		
RIGHT OF WAY	99							
CONTROL								
ALIQUOT CORNER								
WITNESS POST								

SURVEYOR'S STATEMENT (FIELD)

Secondary Control, Right of Way Monumentation and Centerline reference were set under my supervision and checking.
 NAME Thom A. Day P.L.S. NO. 24946
 DATE 8/19/93



SURVEYOR'S STATEMENT (OFFICE)

R.O.W. Plans and Legal Descriptions were prepared under my supervision and checking.
 NAME R. N. C. G. P. P.L.S. NO. 25938
 DATE 8/6/93





SCALE 1"=100'

Notes:

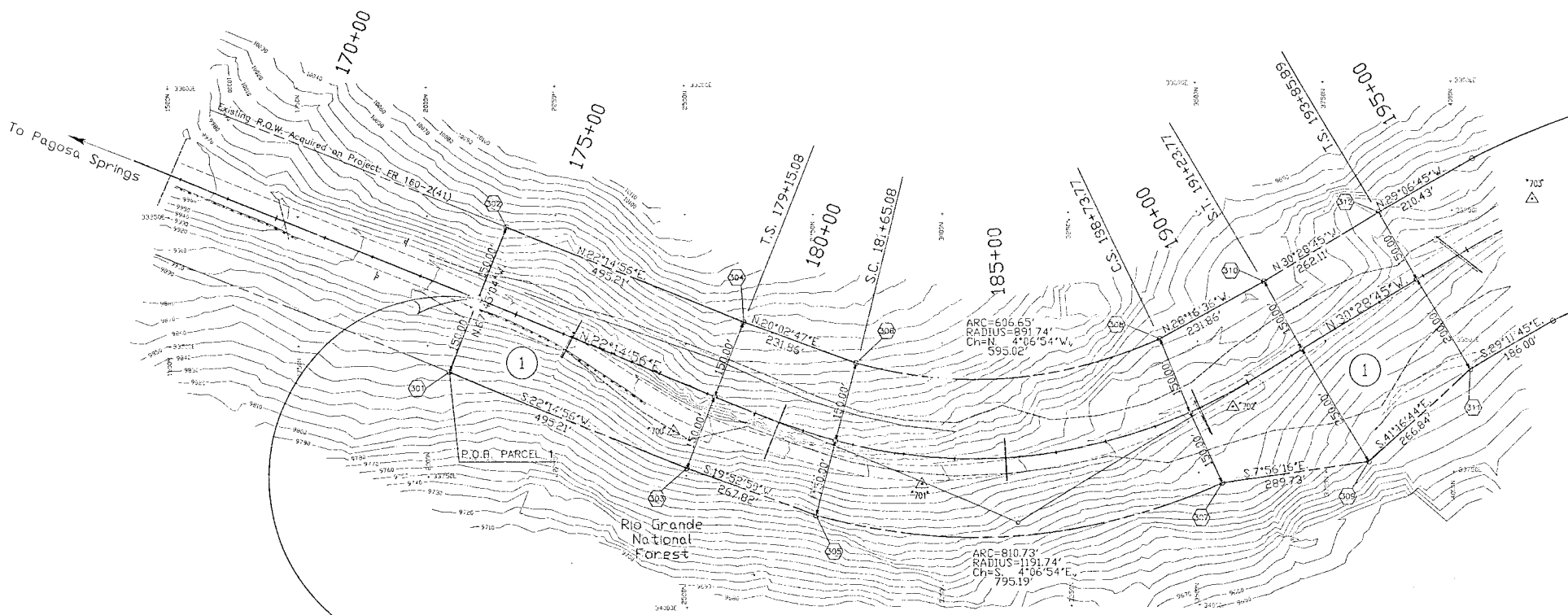
1. Northing Coordinate has been Reduced by 300000.
2. Easting Coordinate has been Reduced by 1600000.

P.I. STA. 185+57.57
 Curve Data
 $\Delta = 52^{\circ}43'40.7''$ Lt.
 $T_s = 642.487'$
 $\Delta c = 38^{\circ}58'40.7''$ Lt.
 $D_c = 5^{\circ}30'$
 $L_c = 708.690'$
 $R_c = 1041.741'$

$B_s = 6^{\circ}52'32''$ Lt.
 $L_s = 250.0'$
 $L.T. = 166.793'$
 $S.T. = 83.448'$

FEDERAL ROAD DISTRICT NO.	DIVISION	PROJECT NO.	SHEET NO.	TOTAL SHEETS
VIII	COLORADO	FC(CX)160-2(45)	4	8

RIGHT OF WAY		REVISIONS	
WEST OF PASS CREEK			



STA. 174+19.87 BEGIN PROJ. FC(CX)160-2(45)
 STA. 174+19.87 on PROJ. FR 160-2(41)

P.I. 185+57.57

① U.S.D.A. FOREST SERVICE
 RIO GRANDE NATIONAL FOREST

San Luis Valley REA



SCALE 1"=100'

FEDERAL ROAD REGION NO.	DIVISION	PROJECT NO.	SHEET NO.	TOTAL SHEETS
VIII	COLORADO	FD(CX)160-2(45)	5	8

RIGHT OF WAY		REVISIONS	
WEST OF PASS CREEK			

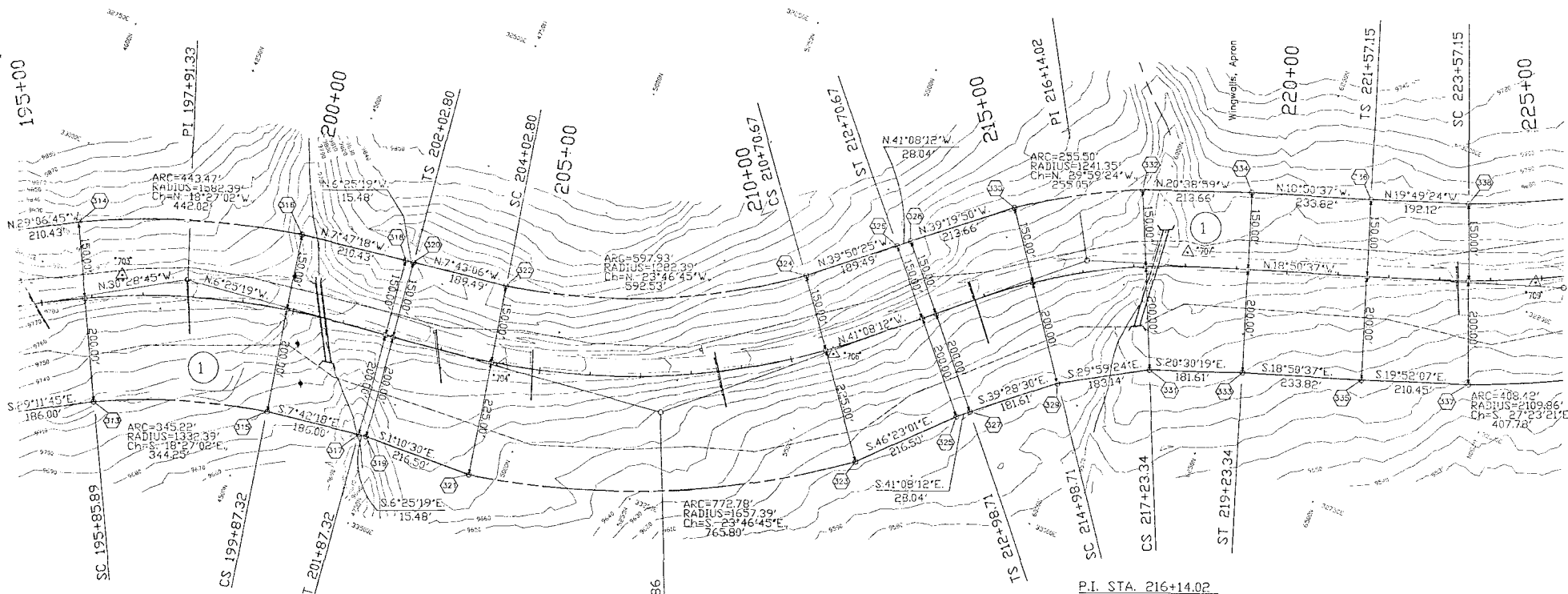
P.I. STA. 207+50.86

Curve Data

$\Delta = 34^{\circ}42'53"$ Lt. $B_s = 4^{\circ}00'00"$ Lt.
 $T_s = 548.06'$ $L_s = 200.00'$
 $E_s = 69.56'$ $LT = 133.37'$
 $\Delta c = 26^{\circ}42'53"$ Lt. $LT = 133.37'$
 $D_c = 4^{\circ}00'00"$ $ST = 66.70'$
 $T_c = 340.12'$
 $L_c = 667.87'$
 $R_c = 1432.39'$

1

U.S.D.A. FOREST SERVICE
RIO GRANDE NATIONAL FOREST



P.I. STA. 197+91.33

Curve Data

$\Delta = 24^{\circ}03'26"$ Rt. $B_s = 4^{\circ}00'00"$ Rt.
 $T_s = 405.44'$ $L_s = 200.00'$
 $E_s = 33.35'$ $LT = 133.37'$
 $\Delta c = 16^{\circ}03'26"$ Rt. $ST = 66.70'$
 $D_c = 4^{\circ}00'00"$
 $T_c = 202.04'$
 $L_c = 401.43'$
 $R_c = 1432.39'$

P.I. STA. 216+14.02

Curve Data

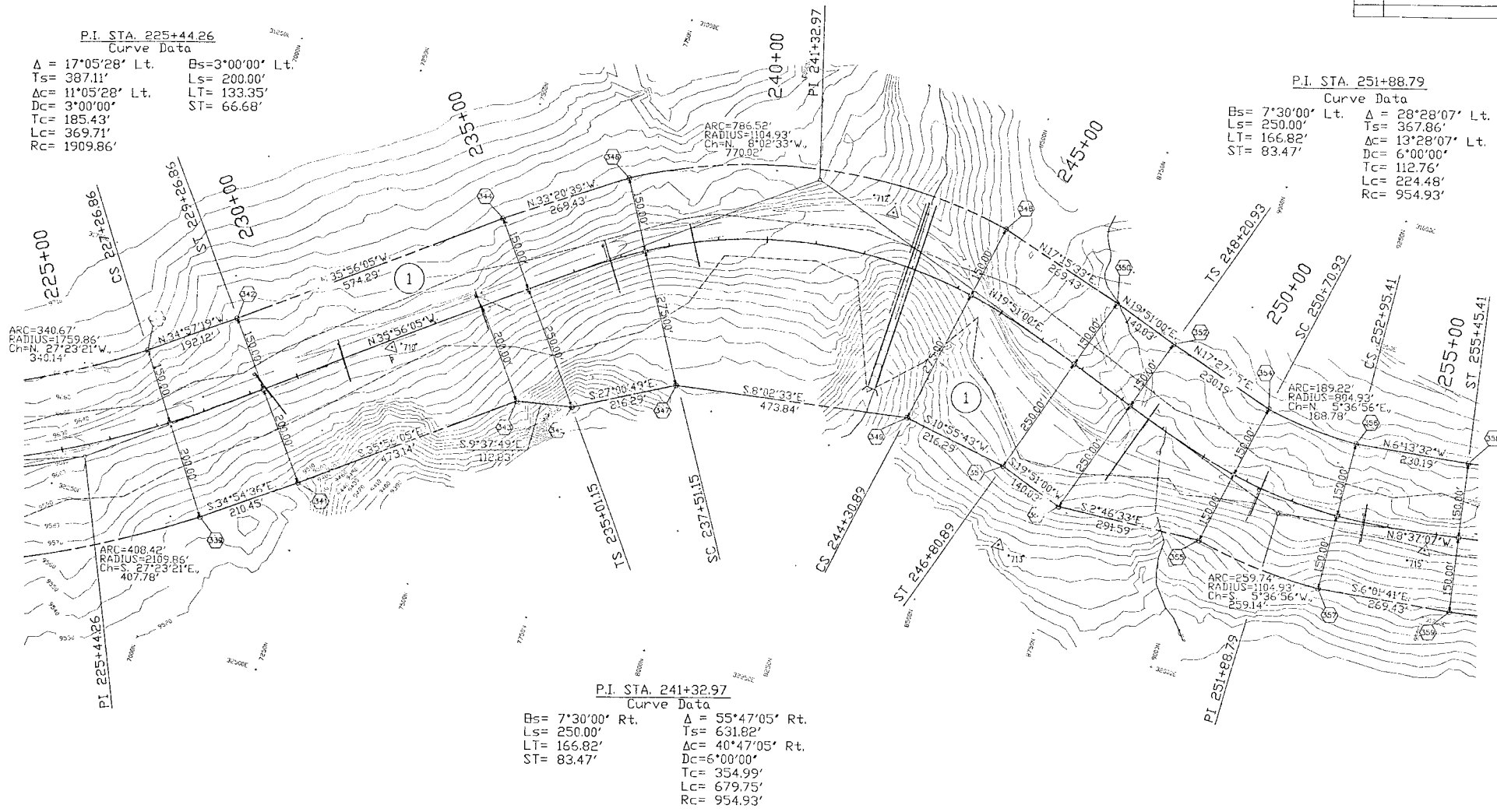
$\Delta = 22^{\circ}17'34"$ Rt. $B_s = 5^{\circ}15'00"$ Rt.
 $T_s = 315.31'$ $L_s = 200.00'$
 $E_s = 22.54'$ $LT = 133.39'$
 $\Delta c = 11^{\circ}47'34"$ Rt. $ST = 66.72'$
 $D_c = 5^{\circ}15'00"$
 $T_c = 112.71'$
 $L_c = 224.63'$
 $R_c = 1091.35'$

FEDERAL ROAD DISTRICT NO.	DIVISION	PROJECT NO.	SHEET NO.	TOTAL SHEETS
STATE	COLORADO	FC(CX)160-2(45)	6	8

RIGHT OF WAY		REVISIONS	
WEST OF PASS CREEK			

SCALE 1"=100'

1 U.S.D.A. FOREST SERVICE
RIO GRANDE NATIONAL FOREST





SCALE 1"=100'

1 U.S.D.A. FOREST SERVICE
RIO GRANDE NATIONAL FOREST

P.I. STA. 269+66.34
Curve Data

$\Delta = 8^{\circ}00'28''$ Lt.
 $T_s = 200.32'$
 $E_s = 4.67'$
 $\Delta C = 0^{\circ}00'28''$ Lt.
 $D_c = 4^{\circ}00'00''$
 $T_c = 0.10'$
 $L_c = 0.19'$
 $R_c = 1432.39'$

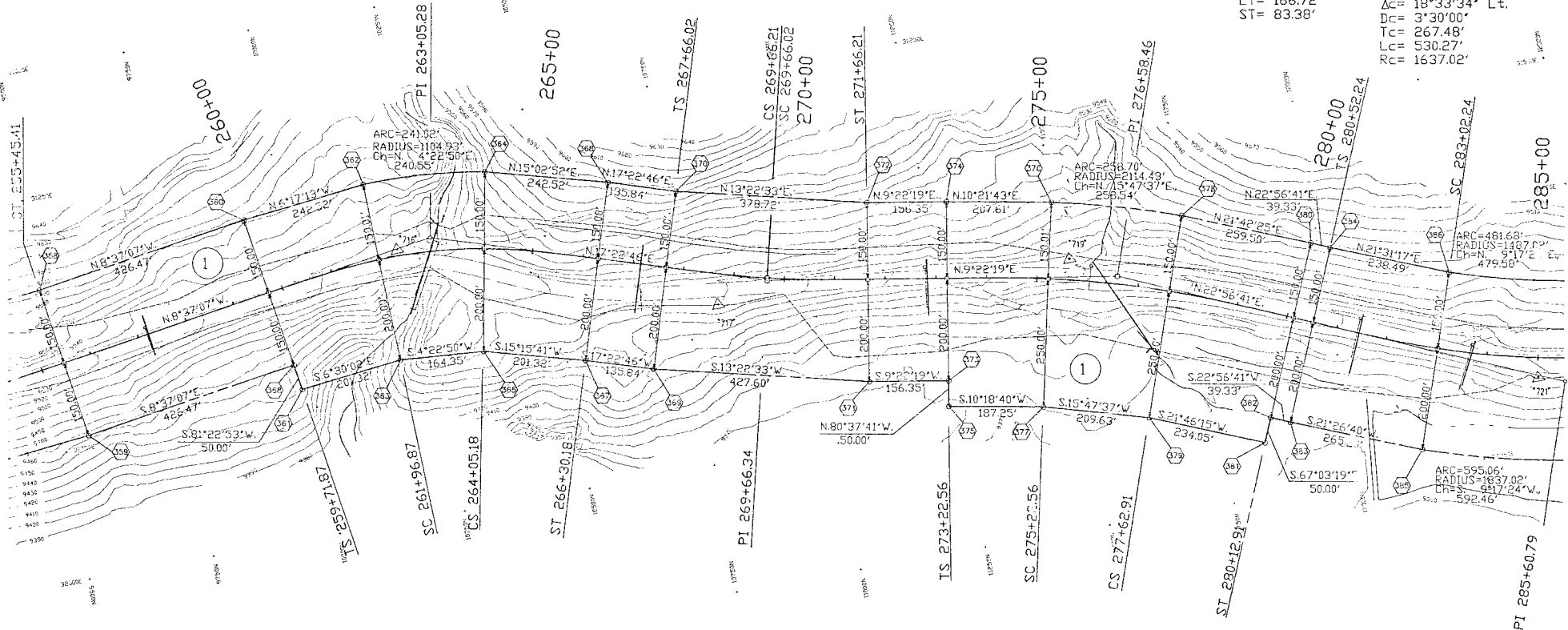
$B_s = 4^{\circ}00'00''$ Lt.
 $L_s = 2.00'$
 $LT = 133.37'$
 $ST = 66.70'$

FEDERAL ROAD DISTRICT NO.	DIVISION	PROJECT NO.	SHEET NO.	TOTAL SHEETS
10111	COLORADO	FC(CX)160-2(45)	7	8

RIGHT OF WAY WEST OF PASS CREEK	REVISIONS	
	NO.	DESCRIPTION

P.I. STA. 285+60.79
Curve Data

$B_s = 4^{\circ}22'60''$ Lt. $\Delta = 26^{\circ}26'04''$ Lt.
 $L_s = 250.00'$ $T_s = 508.54'$
 $LT = 166.72'$ $\Delta C = 18^{\circ}33'34''$ Lt.
 $ST = 83.38'$ $D_c = 3^{\circ}30'00''$
 $T_c = 267.48'$
 $L_c = 530.27'$
 $R_c = 1637.02'$



P.I. STA. 263+05.28

Curve Data
 $\Delta = 25^{\circ}59'54''$ Rt. $B_s = 6^{\circ}45'00''$ Rt.
 $T_s = 333.41'$ $L_s = 225.00'$
 $E_s = 27.38'$ $LT = 150.11'$
 $\Delta C = 12^{\circ}29'54''$ Rt. $ST = 75.10'$
 $D_c = 6^{\circ}00'00''$
 $T_c = 104.57'$
 $L_c = 208.30'$
 $R_c = 954.93'$

P.I. STA. 276+58.46

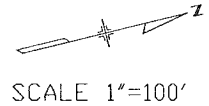
Curve Data
 $B_s = 3^{\circ}38'45''$ Rt. $\Delta = 13^{\circ}34'22''$ Rt. $B_s = 2^{\circ}55'00''$ Rt.
 $L_s = 250.00'$ $T_s = 335.90'$ $L_s = 200.00'$
 $LT = 166.70'$ $\Delta C = 7^{\circ}00'37''$ Rt. $LT = 133.35'$
 $ST = 83.37'$ $D_c = 2^{\circ}55'00''$ $ST = 66.68'$
 $T_c = 120.33'$
 $L_c = 240.35'$

T.38 N., R.2 E., N.M.P.M.

FEDERAL ROAD REGION NO.	DIVISION	PROJECT NO.	SHEET NO.	TOTAL SHEETS
XIII	COLORADO	FC(CX)160-2(45)	8	8

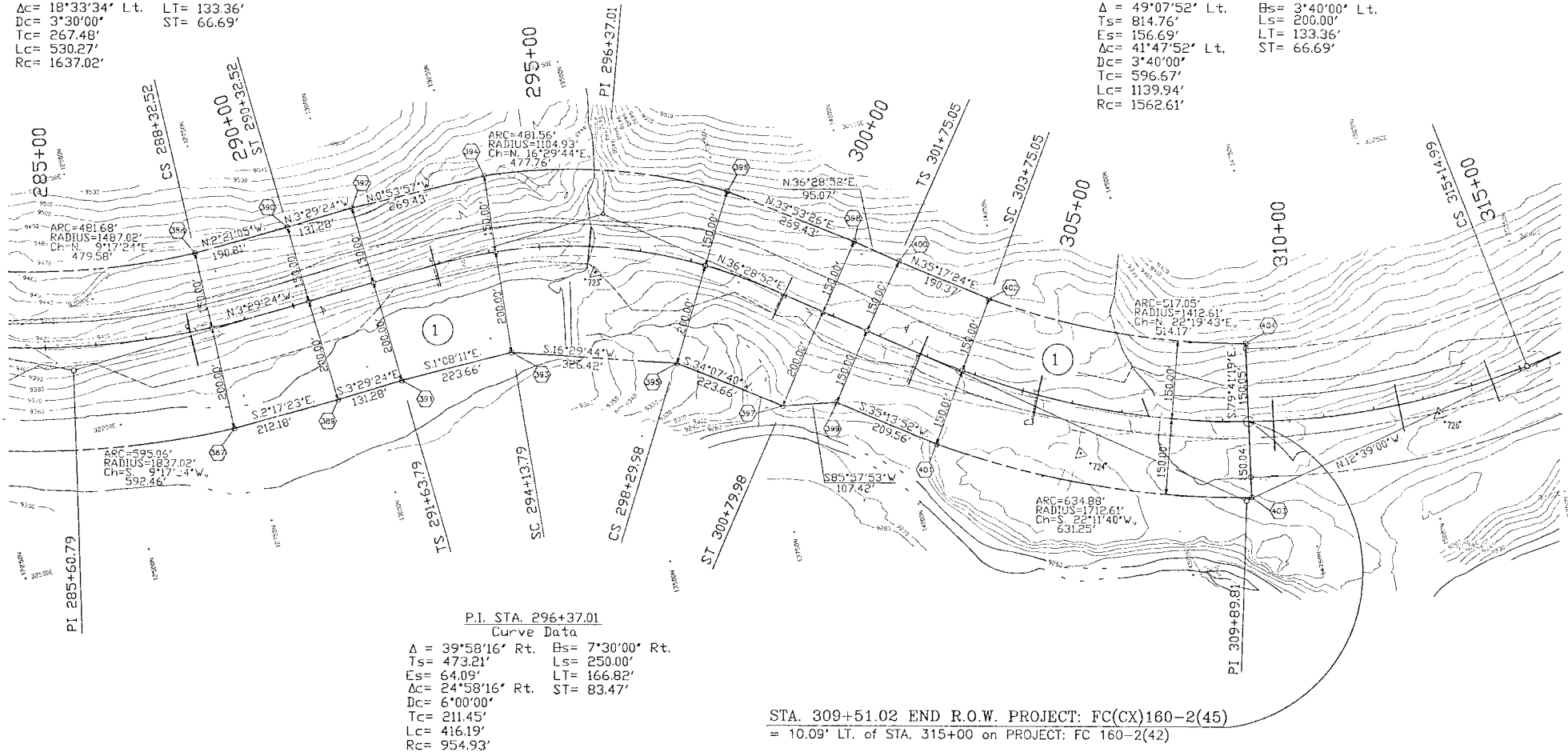
RIGHT OF WAY		REVISIONS	
WEST OF PASS CREEK			

1 U.S.D.A. FOREST SERVICE
RIO GRANDE NATIONAL FOREST



P.I. STA. 285+60.79
Curve Data
 $\Delta = 26^{\circ}26'04''$ Lt. $Hs = 3^{\circ}30'00''$ Lt.
 $Ts = 508.54'$ $Ls = 200.00'$
 $\Delta c = 18^{\circ}33'34''$ Lt. $LT = 133.36'$
 $Dc = 3^{\circ}30'00''$ $ST = 66.69'$
 $Tc = 267.48'$
 $Lc = 530.27'$
 $Rc = 1637.02'$

P.I. STA. 309+89.81
Curve Data
 $\Delta = 49^{\circ}07'52''$ Lt. $Hs = 3^{\circ}40'00''$ Lt.
 $Ts = 814.76'$ $Ls = 200.00'$
 $Es = 156.69'$ $LT = 133.36'$
 $\Delta c = 41^{\circ}47'52''$ Lt. $ST = 66.69'$
 $Dc = 3^{\circ}40'00''$
 $Tc = 596.67'$
 $Lc = 1139.94'$
 $Rc = 1562.61'$



P.I. STA. 296+37.01
Curve Data
 $\Delta = 39^{\circ}58'16''$ Rt. $Hs = 7^{\circ}30'00''$ Rt.
 $Ts = 473.21'$ $Ls = 250.00'$
 $Es = 64.09'$ $LT = 166.82'$
 $\Delta c = 24^{\circ}58'16''$ Rt. $ST = 83.47'$
 $Dc = 6^{\circ}00'00''$
 $Tc = 211.45'$
 $Lc = 416.19'$
 $Rc = 954.93'$

STA. 309+51.02 END R.O.W. PROJECT: FC(CX)160-2(45)
= 10.09' LT. of STA. 315+00 on PROJECT: FC 160-2(42)