

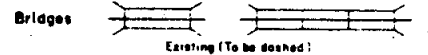
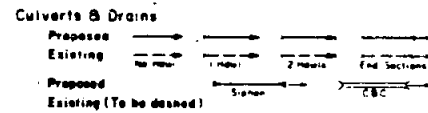
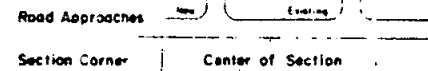
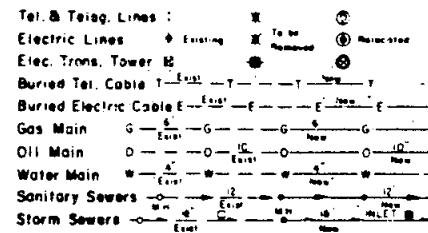
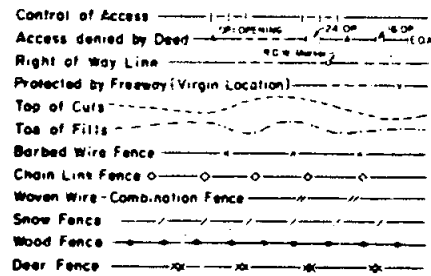
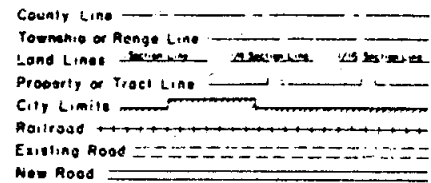
STATE DEPARTMENT OF HIGHWAYS DIVISION OF HIGHWAYS--STATE OF COLORADO

FEDERAL ROAD REGION NO.	DIVISION	PROJECT NO.	SHEET NO.
III	COLORADO	FC 083-1(33)	1

REVISIONS	

RIGHT OF WAY
1 MILE SOUTH OF DOUGLAS
COUNTY LINE

CONVENTIONAL SIGNS



RIGHT OF WAY PLAN OF PROPOSED FEDERAL AID PROJECT NO. FC 083-1(33) STATE HIGHWAY NO. 83 DOUGLAS COUNTY RIGHT OF WAY

SCALE OF ORIGINAL DRAWINGS

PLAN SHEETS 1"=100'
DETAIL SHEETS 1"=100'
OWNERSHIP MAPS 1"=100'

R.O.W. LENGTH OF PROJECT = 9794 FT. = 0.185 MILES

INDEX OF SHEETS

1. TITLE SHEET
2. TABULATION SHEET
3. DETAIL SHEET

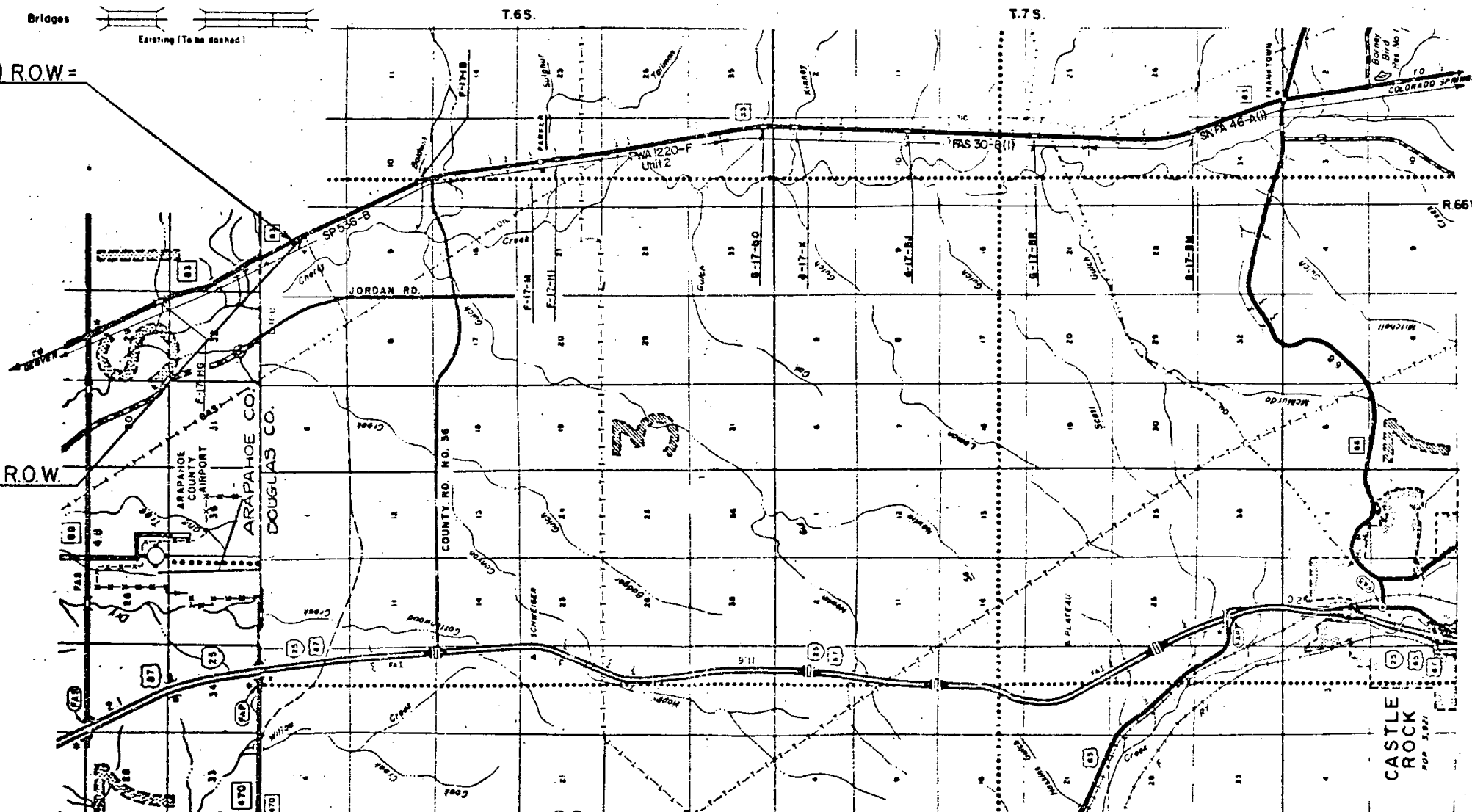
NOTE: THIS PROJECT CALCULATED
AND CHECKED BY FIELD FORCES

STA. 136+92.2 BEG FC 083-1(33) R.O.W. =

STA. 136+92.2 ON FC 083-1(33) CONST. =
20.0 FT. LT. OF 739+96.4 ON S.P. 536-B =
32.8 FT. LT. OF 136+91.5 ON AERIAL BASELINE.
M.P. = 62.78

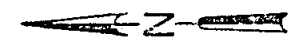
P.O.C. 146+71.6 END FC 083-1(33) R.O.W. =

STA. P.O.C. 146+71.6 ON FC 083-1(33) CONST. =
17.4 FT. LT. OF P.O.C. 749+75.0 ON S.P. 536-B =
29.9 FT. LT. OF 146+70.9 ON AERIAL BASELINE.
M.P. = 62.60



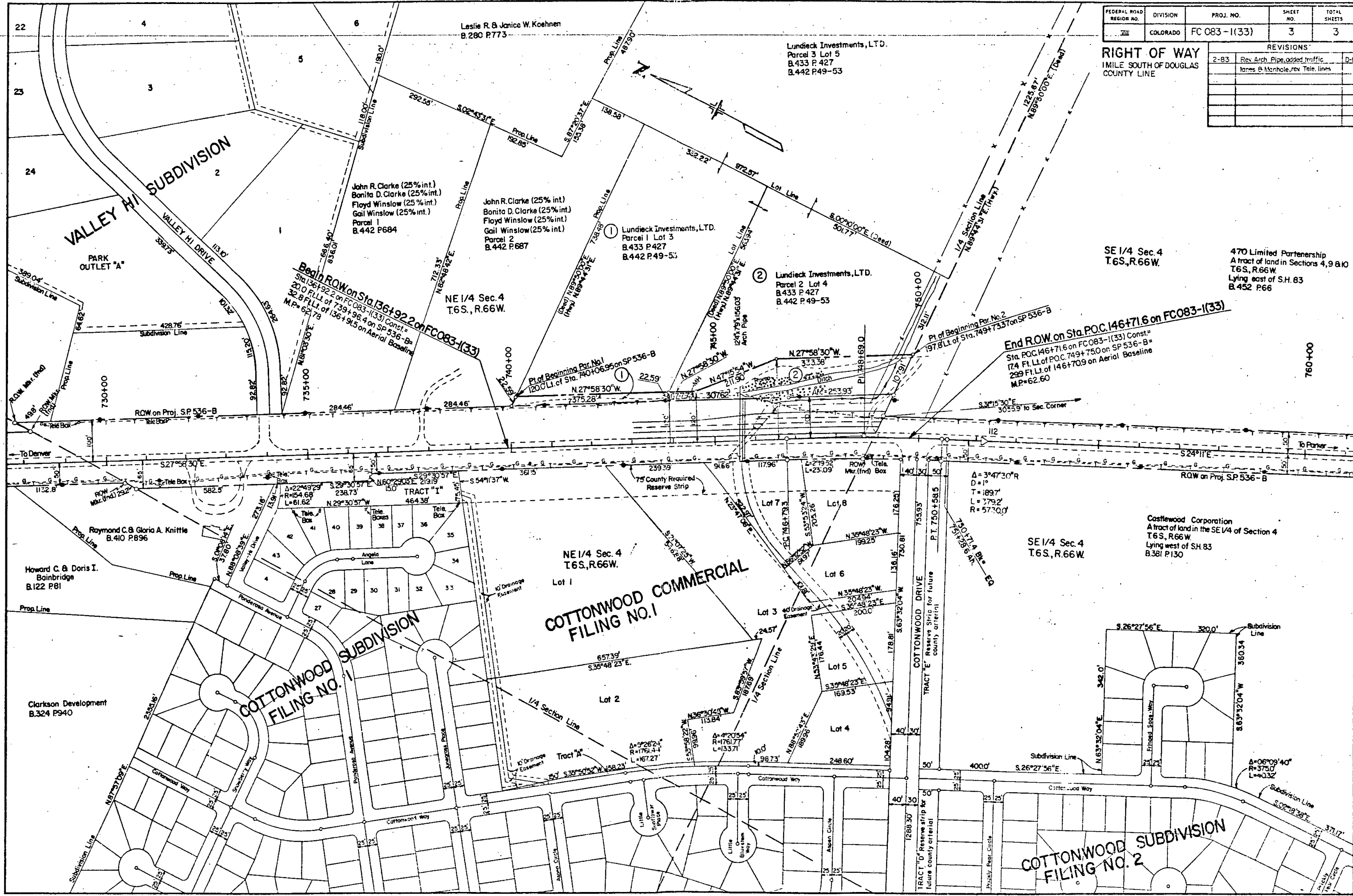
DIVISION OF HIGHWAYS	
APPROVED:	DATE
<i>R.P. McDaniel</i>	4-28-83
DISTRICT ENGINEER	DATE

DEPARTMENT OF TRANSPORTATION FEDERAL HIGHWAY ADMINISTRATION	
APPROVED:	DATE
DIVISION ADMINISTRATOR	



FEDERAL ROAD REGION NO.	DIVISION	PROJ. NO.	SHEET NO.	TOTAL SHEETS
III	COLORADO	FC 083-1(133)	3	3

REVISIONS			
2-83	Rev. Arch. Pipe, added traffic lanes & Manhole, rev. Tele. lines	D-1	



SE 1/4 Sec. 4
 T.6S., R.66W.
 470 Limited Partnership
 A tract of land in Sections 4, 9 & 10
 T.6S., R.66W.
 Lying east of S.H. 83
 B.452 P.66

SE 1/4 Sec. 4
 T.6S., R.66W.
 Castlewood Corporation
 A tract of land in the SE 1/4 of Section 4
 T.6S., R.66W.
 Lying west of S.H. 83
 B.381 P.130

End ROW on Sta. P.O.C. 146+71.6 on FC083-1(133)
 Sta. P.O.C. 146+71.6 on FC083-1(133) Const. =
 17.4 Ft. Lt. of P.O.C. 749+750 on SP 536-B =
 239 Ft. Lt. of 146+70.9 on Aerial Baseline
 M.P. = 62.60

Begin ROW on Sta. 136+92.2 on FC083-1(133)
 Sta. 136+92.2 on FC083-1(133) Const. =
 20.0 Ft. Lt. of 739+98.4 on SP 536-B =
 32.8 Ft. Lt. of 136+91.5 on Aerial Baseline
 M.P. = 62.79

COTTONWOOD COMMERCIAL
 FILING NO. 1

COTTONWOOD SUBDIVISION
 FILING NO. 2

VALLEY HI SUBDIVISION

COTTONWOOD SUBDIVISION
 FILING NO. 1