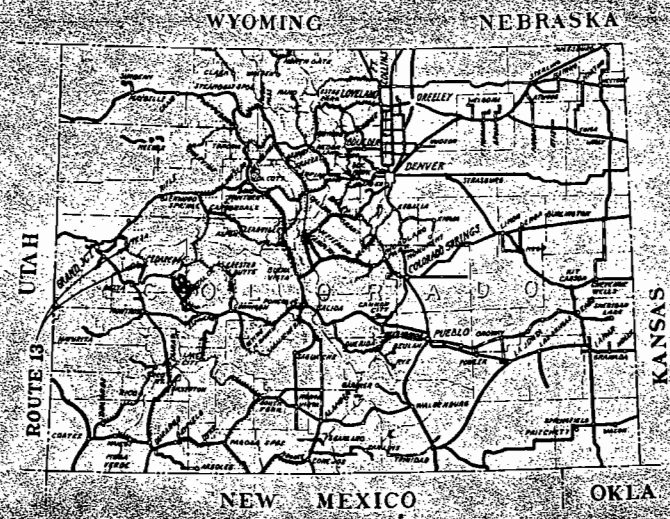


U.S. DEPARTMENT OF COMMERCE  
BUREAU OF PUBLIC ROADS

DIV.	STATE	ROUTE NO.	SECTION	SHEET NO.	TOTAL SHEETS
9	COLO.	13	B	1	

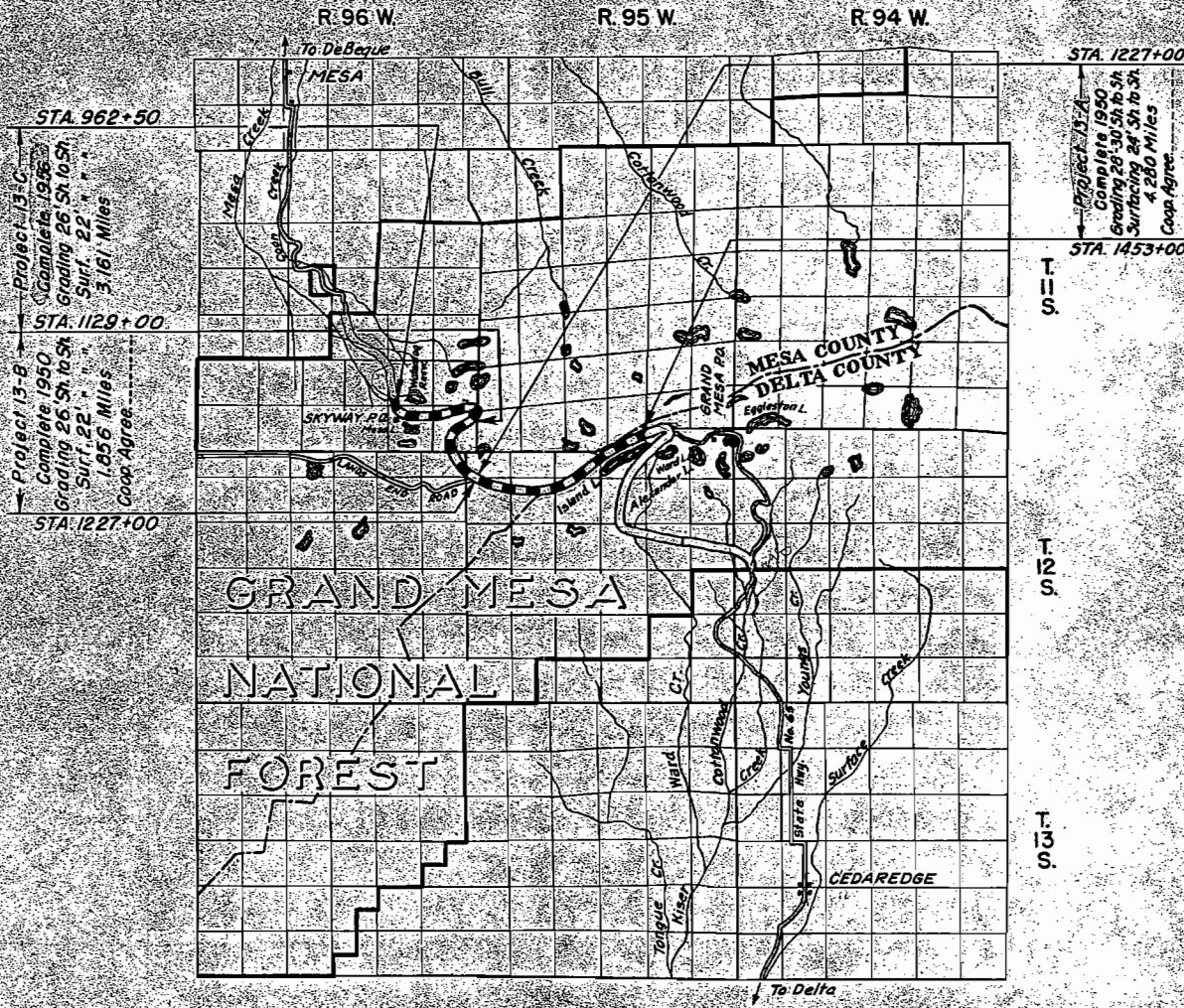


AS CONSTRUCTED  
**PROJECT 13-B**  
ROUTE 13 CEDAREGGE - MESA  
SOUTH FOREST BDRY. NORTHWESTERLY TO THE NORTH FOREST BDRY.  
26 MILES CLASS 2  
COLORADO FOREST HIGHWAY SYSTEM  
GRAND MESA NATIONAL FOREST  
MESA AND DELTA COUNTIES  
COLORADO

INDEX TO SHEETS

SHEET NO.	DESCRIPTION	STATION+STATION
1	Title Sheet	
2	Typical Sections	
3	Summary	
4-13	Plan & Profile	962+50   1229+00
Rev. D3-Std. 117	C.R.M. Hdws. & Inlets for Pipe Culverts	
D3-Std. 117A	Conc. End Sections, Hdws. & Inlets	
Rev. D3-Std. 129A	Std. Miscellaneous Structures	
D3-Std. 131	Std. Maintenance Posts	
Rev. D3-Std. 143	Typical Construction Signs	
D3-Std. 145A	Std. 26' Cattle Guard	
D3-Std. 162A	Timber Guide Posts with Reflector Strips	
D3-Std. 166	Strutting Detail for Large Dia. C.M.P. Culverts	
3-18	Cross Sections	962+50   1229+00

Federal Aid Highway System  
Primary  
Secondary  
Forest Highway System  
National Forests



U.S. DEPARTMENT OF COMMERCE  
BUREAU OF PUBLIC ROADS  
DIVISION NO. 9 DENVER, COLORADO

APPROVED \_\_\_\_\_ DATE \_\_\_\_\_ 19\_\_  
ACTING DIVISION ENGINEER  
BY DESIGN ENGINEER  
APPROVED \_\_\_\_\_ DATE \_\_\_\_\_ 19\_\_  
DISTRICT ENGINEER  
APPROVED \_\_\_\_\_ DATE \_\_\_\_\_ 19\_\_  
REGIONAL FORESTER  
APPROVED \_\_\_\_\_ DATE \_\_\_\_\_ 19\_\_  
CHIEF ENGINEER  
COLORADO DEPARTMENT OF HIGHWAYS

INDEX MAP



LEGEND

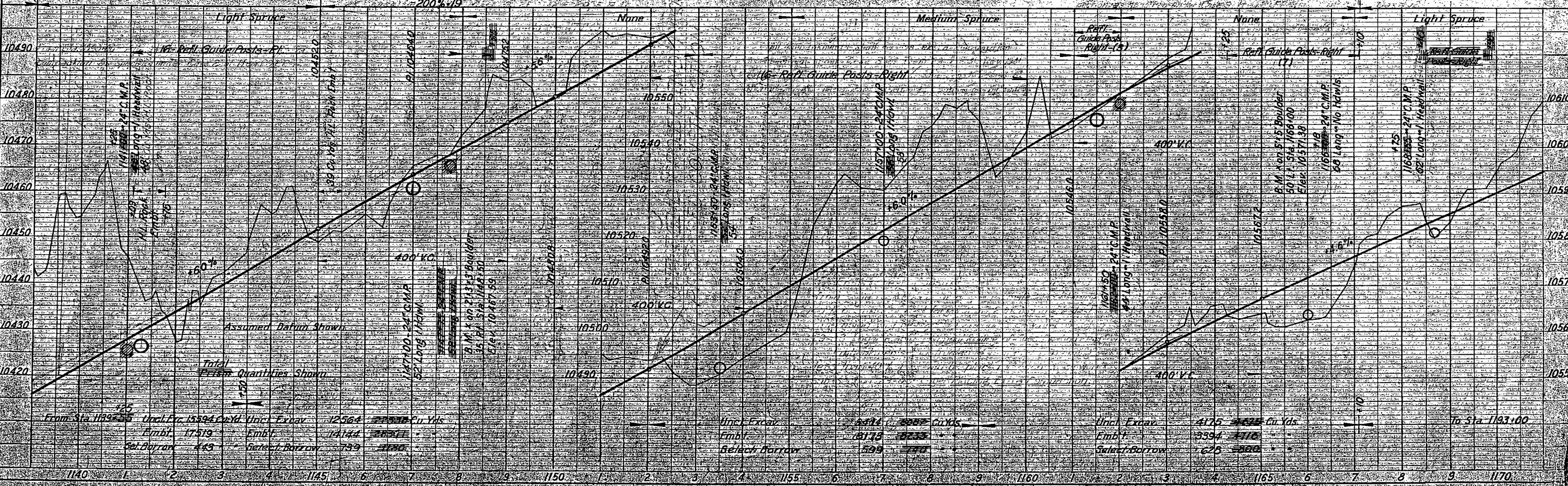
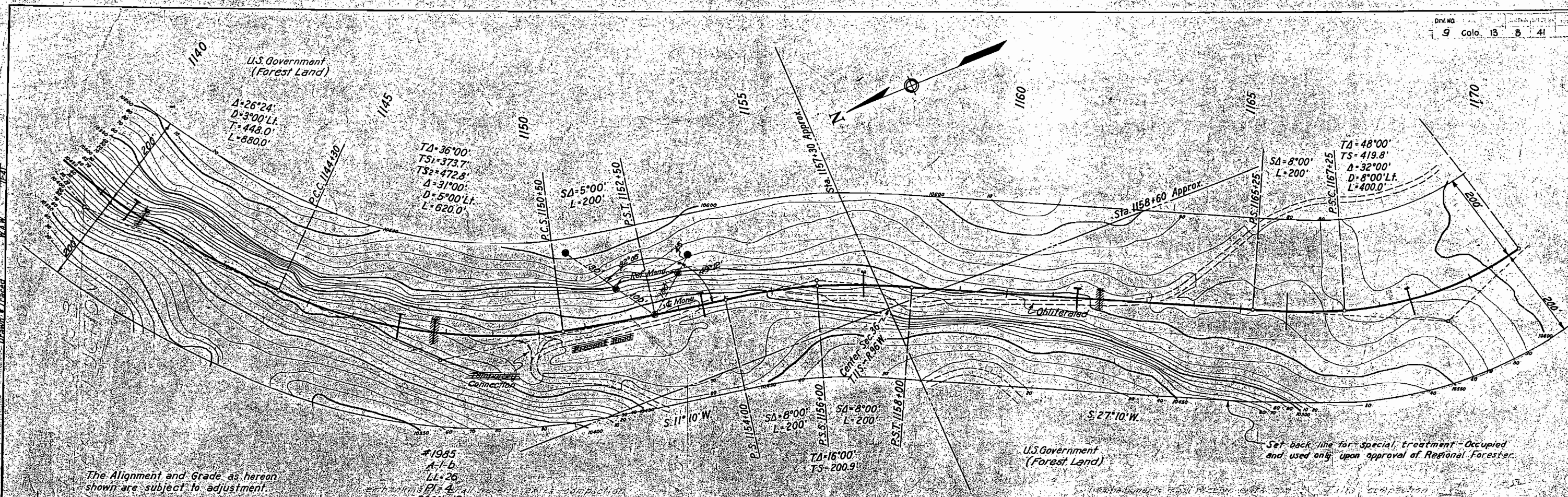
EXISTING ROADS	UNIMPROVED	GRADED	REINFORCED SUBGRADE	BASE COURSE	CR. ROCK GRAY MACADAM	BITUMINOUS TYPES
----------------	------------	--------	---------------------	-------------	-----------------------	------------------

U.S. P.A.R. DIST. 3 DENVER, COLO. FEB. 1944. E. W. M.

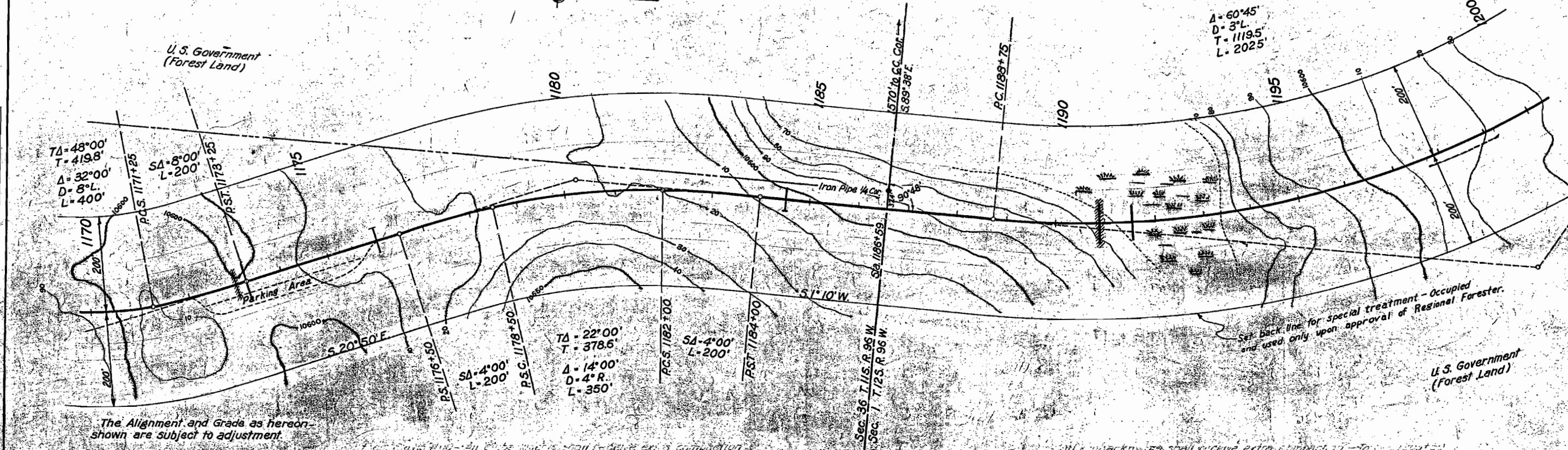
Cadaredge - Mesa Colo. 13  
Sta. 1140 to Sta. 1170  
Sheet No. 41

DATE: 12-31-41  
DRAWN: W.F.W.  
CHECKED: J.P.C.  
NOTE: BODY OF THIS SHEET CHECKED BY J.P.C. 12-31-41

DATE: 12-31-41  
DRAWN: W.F.W.  
CHECKED: J.P.C.  
NOTE: BODY OF THIS SHEET CHECKED BY J.P.C. 12-31-41



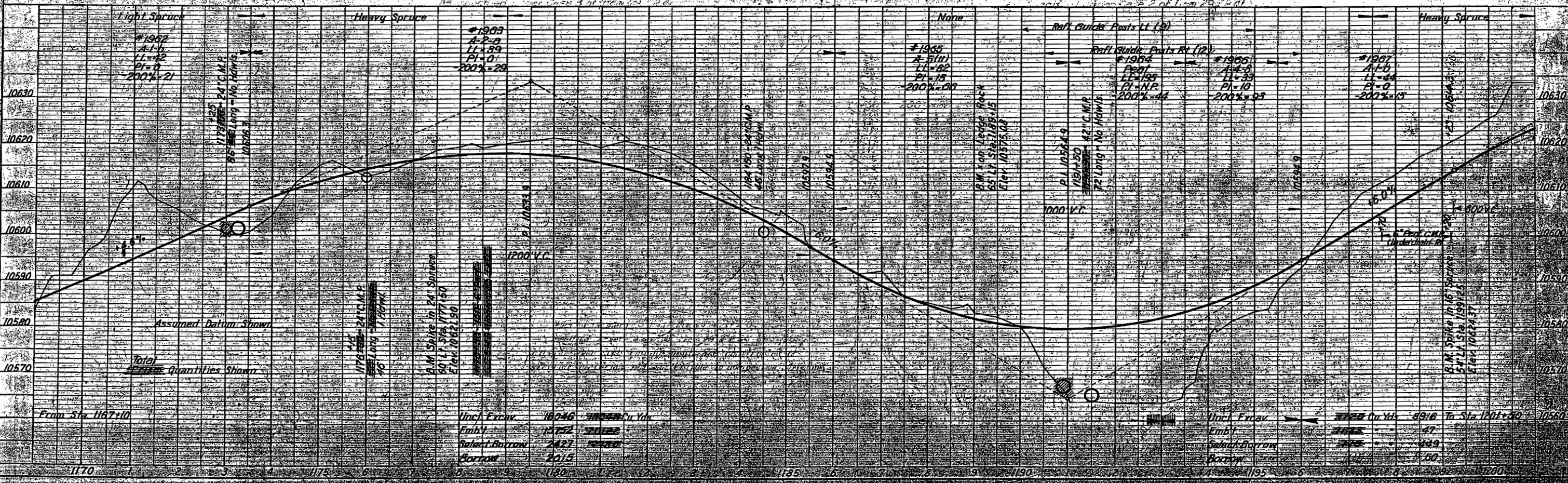
PLAN	DATE	BY	CHKD.
DESIGNED	1937		
ALIGNED			
NOTED			
NO.			
DATE			
BY			
CHKD.			



The Alignment and Grade as hereon shown are subject to adjustment.

Set back line for special treatment - Occupied and used only upon approval of Regional Forester.

PROFILE	DATE	BY	CHKD.
DESIGNED			
ALIGNED			
NOTED			
NO.			
DATE			
BY			
CHKD.			



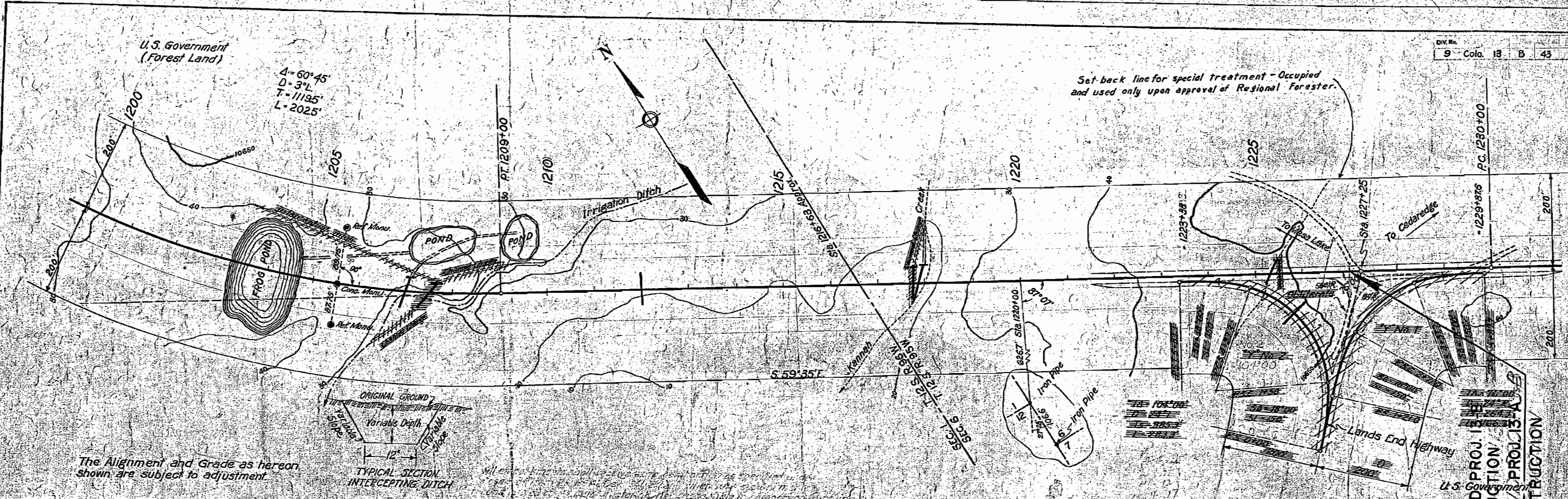
Assumed Datum Shown  
Total Earth Quantities Shown

Unc. Excav.	18046	Cu Yds.
Embl.	15752	
Select Borrow	2427	
Borrow	2015	

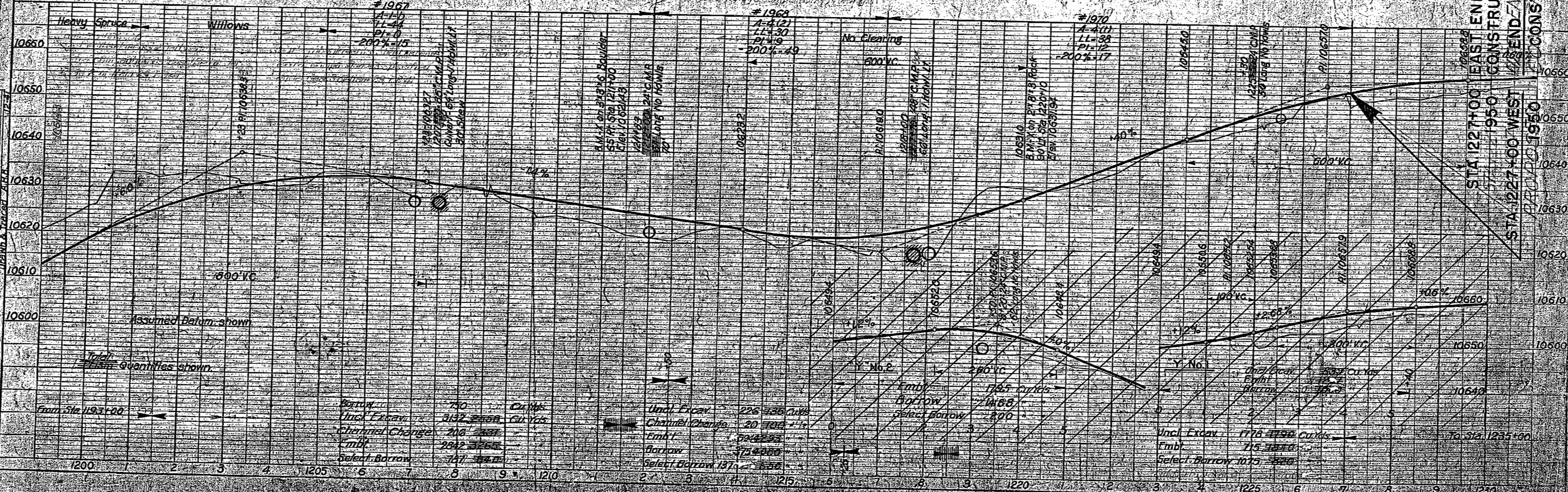
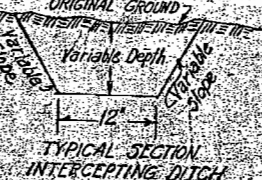
Unc. Excav.	8916	Cu Yds.
Embl.	47	
Select Borrow	449	
Borrow	600	

PLAN	DATE	BY
DESIGNED	12/17/51	W.F.C.
DRAWN		
CHECKED		
APPROVED		

PROFILE	DATE	BY
DESIGNED	12/17/51	W.F.C.
DRAWN		
CHECKED		
APPROVED		



The Alignment and Grade as hereon shown are subject to adjustment.

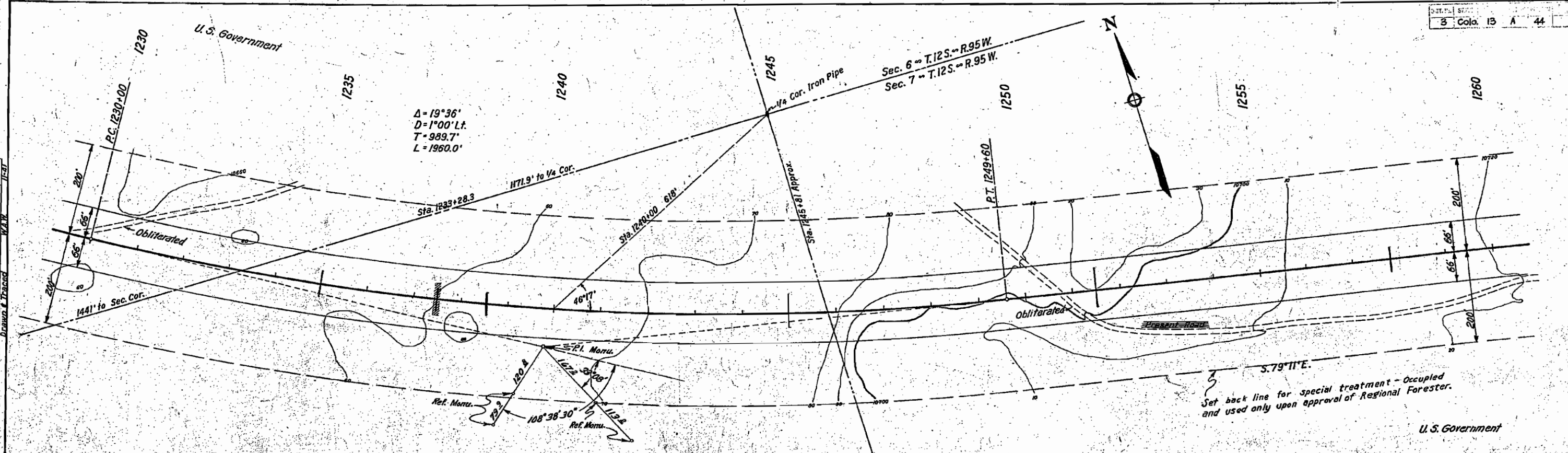


Borrow	70	Cu. Yds.	Uncl. Excav.	226	Cu. Yds.
Uncl. Excav.	3132	Cu. Yds.	Channel Change	20	cu. ft.
Channel Change	216	cu. ft.	Emb'd	594	cu. ft.
Emb'd	2342	cu. ft.	Borrow	1715	cu. yds.
Select Borrow	147	cu. yds.	Select Borrow	1075	cu. yds.

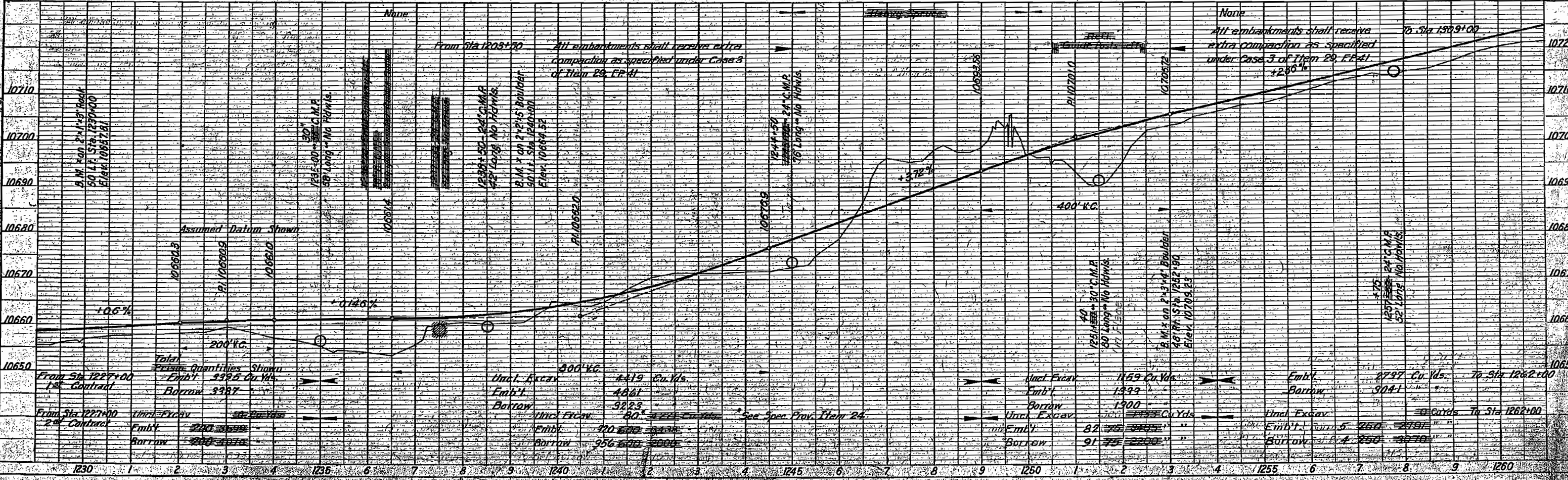
U.S. GOVERNMENT  
LANDS END PROJ. 13  
CONSTRUCTION  
U.S. GOVERNMENT  
LANDS END PROJ. 13  
CONSTRUCTION

PLAN	DATE
REVISION	BY
NOTED	DATE
ALIGNED	BY
BOOK	NO.
REF. OF WAY	CHECKED
NO.	

PROFILE	DATE
REVISION	BY
NOTED	DATE
ALIGNED	BY
BOOK	NO.
STRUCTURE	NOTARY
NO.	



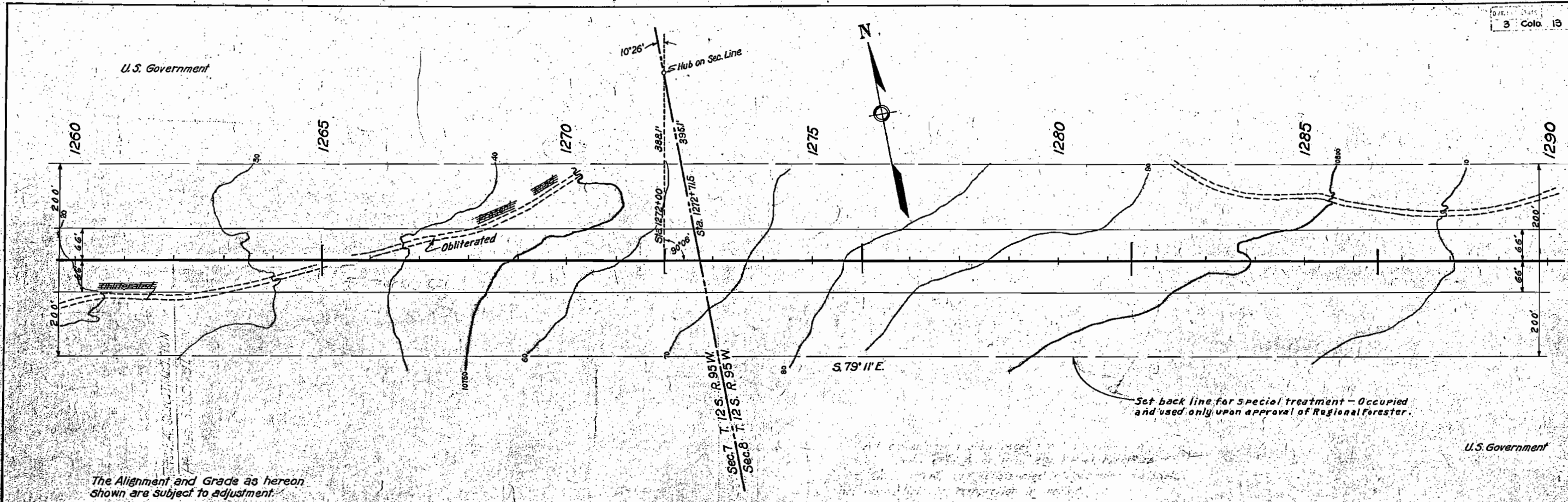
The Alignment and Grade as hereon shown are subject to adjustment.



From Sta 1227+00 1 <sup>st</sup> Contract	Total Excav. Quantities Shown Emb't 3325 Cu Yds. Borrow 3387	200' KC	From Sta 1203+50 All embankments shall receive extra compaction as specified under Case 3 of Item 29, F.P. 41	1250+50 - 24' C.M.P. 52' Long - No H.P.W.S.	1250+50 - 24' C.M.P. 76' Long - No H.P.W.S.	400' KC	From Sta 1227+00 2 <sup>nd</sup> Contract	Total Excav. Quantities Shown Emb't 280 Borrow 280	1250+50 - 24' C.M.P. 80' Long - No H.P.W.S.	1250+50 - 24' C.M.P. 171' Long - No H.P.W.S.	1250+50 - 24' C.M.P. 52' Long - No H.P.W.S.	From Sta 1262+00	Total Excav. Quantities Shown Emb't 5 Borrow 4	200' KC	From Sta 1262+00	Total Excav. Quantities Shown Emb't 5 Borrow 4
--	---	---------	--	--	--	---------	--	---	--	---	--	------------------	---	---------	------------------	---

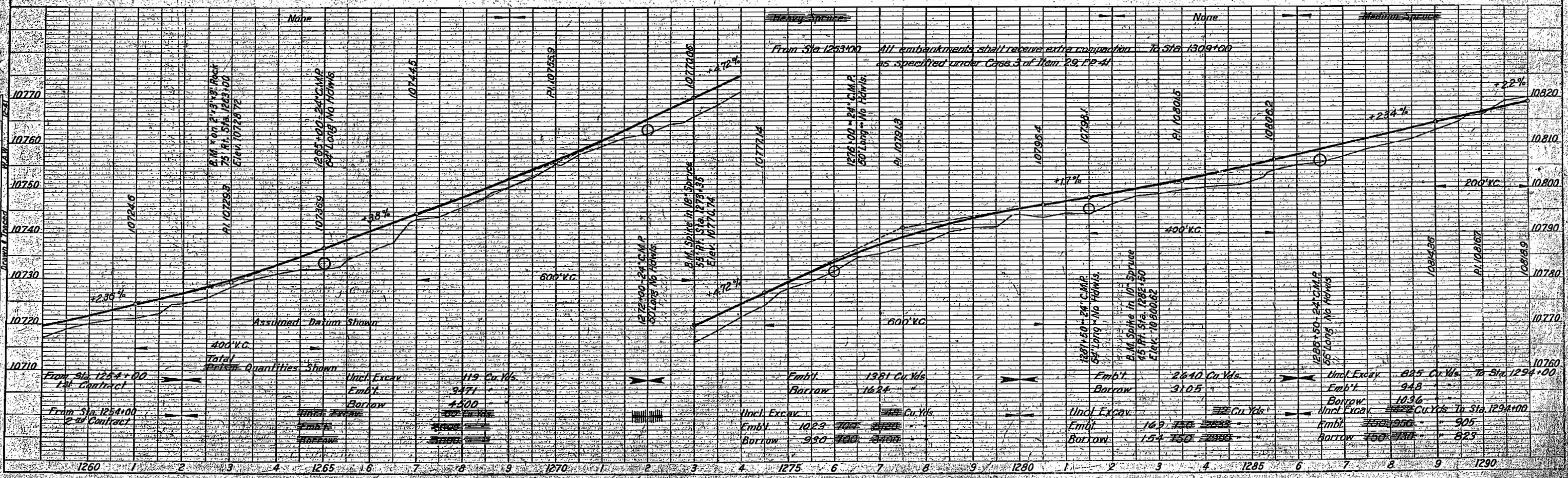
Cedaredge - Mesa, Colo. 13  
Sta. 1260+00 to Sta. 1294+00  
Sheet No. 45

PLAN	DESIGNED BY	DATE
	W. H. W.	12-17
	CHECKED BY	
	D. J. M.	
	APPROVED BY	
	A. R. H.	



The Alignment and Grade as hereon shown are subject to adjustment.

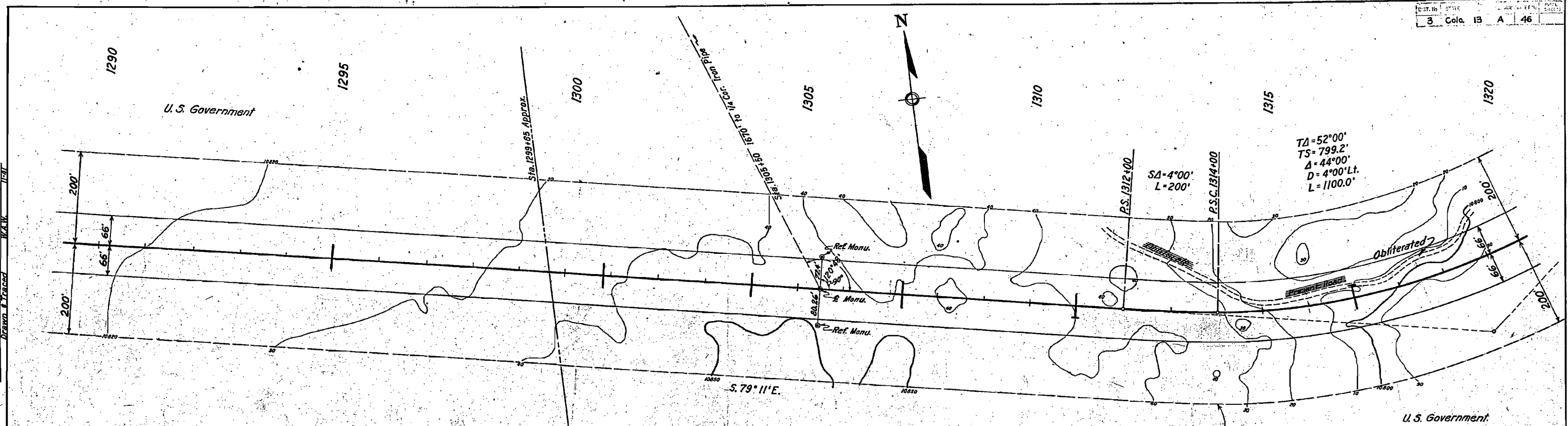
PROFILE	DESIGNED BY	DATE
	W. H. W.	12-17
	CHECKED BY	
	D. J. M.	
	APPROVED BY	
	A. R. H.	



Station	Contract	Incl. Excav	Emb't	Borrow	Total
From Sta. 1254+00	1st Contract				
From Sta. 1254+00	2nd Contract				
1260					
1265					
1270					
1275					
1280					
1285					
1290					

PLAN	DATE	12-31
BY	W.H.C.	
NO.		
NOTE: BOOK CHECKED, ALIGNMENT CHECKED, RT. OF WAY CHECKED.		
SUPERVISOR'S TRACKED		

PROFILE	DATE	12-31
BY	W.H.C.	
NO.		
NOTE: BOOK CHECKED, GRADES CHECKED, ELEVATIONS CHECKED, RT. OF WAY CHECKED.		
SUPERVISOR'S TRACKED		



The Alignment and Grade as hereon shown are subject to adjustment.

"Set back line for special treatment - Occupied and used only upon approval of Regional Forester."

From Sta. 1293+00 All embankments shall receive extra compaction as specified under Case 3 of Item 29, F.P. 41

To Sta. 1320+00 All embankments shall receive extra compaction as specified under Case 3 of Item 29, F.P. 41

