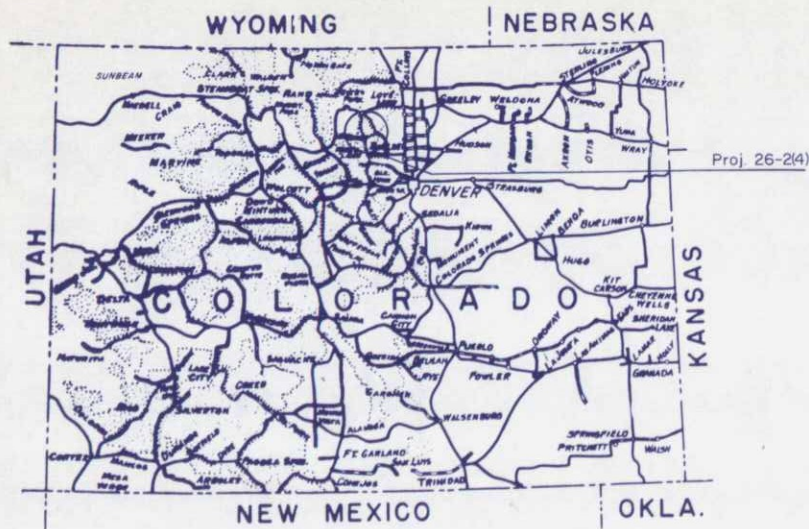


U.S. DEPARTMENT OF TRANSPORTATION
 FEDERAL HIGHWAY ADMINISTRATION
 BUREAU OF PUBLIC ROADS

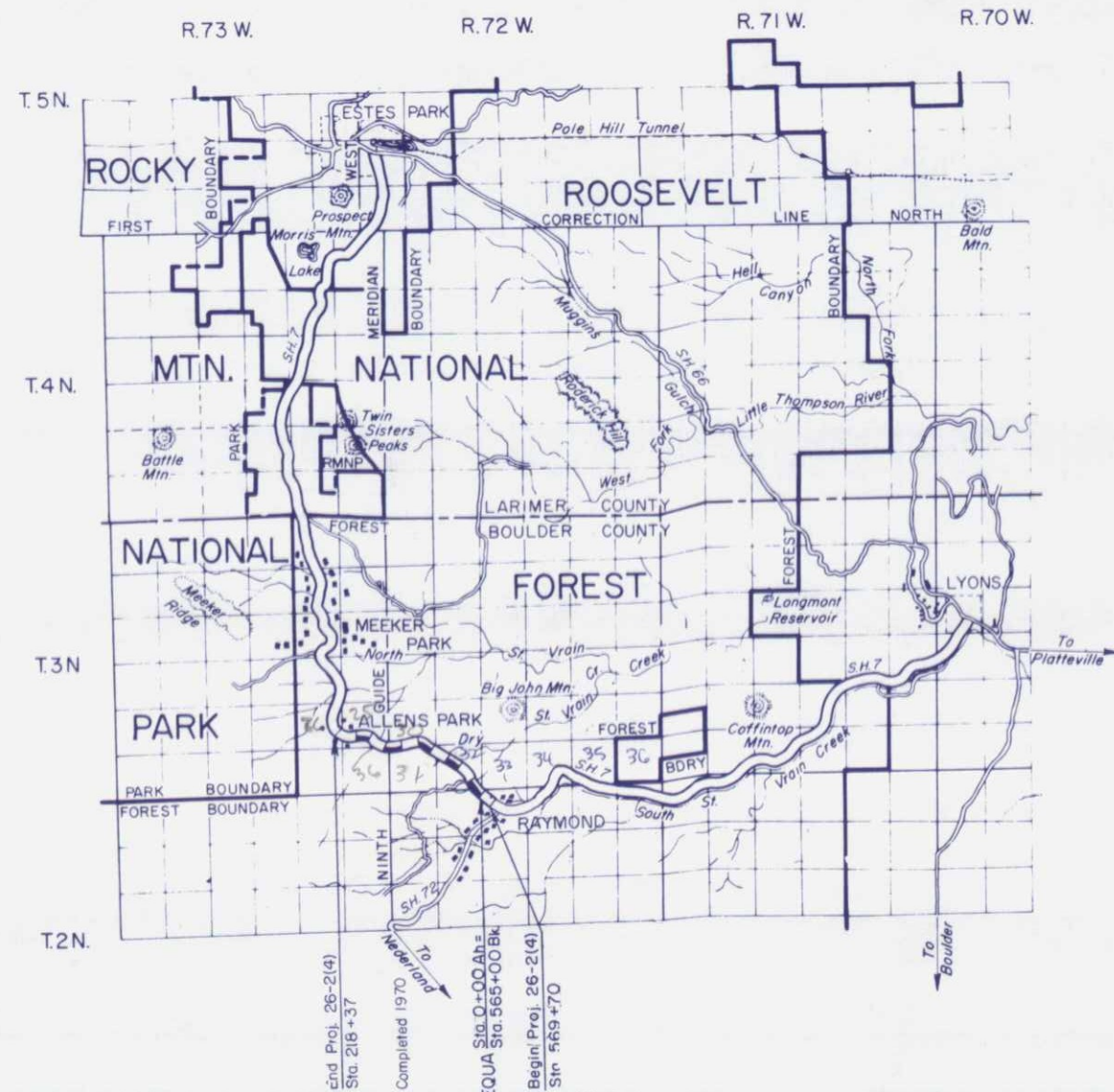
REGION 9 STATE COLORADO
 PROJECT Colo. FH 26-2(4) South Saint Vrain
 SHEET 1 OF SHEETS



AS CONSTRUCTED
 COLORADO FOREST HIGHWAY PROJECT 26-2(4)
 SOUTH SAINT VRAIN
 LENGTH 4.215 MILES
 CLASS I
 ROOSEVELT NATIONAL FOREST
 BOULDER COUNTY

AS CONSTRUCTED PLANS
 RETURN TO DIST. 4 DESIGN

INDEX TO SHEETS		
SHEET NO	DESCRIPTION	STATION TO STATION
1	Title Sheet	
2	Typical Sections	
3	Summary (3 Sheets)	
4A	Plan & Profile	569+70 565+00B
4-II	Plan & Profile	0+00Ah 218+37
9A	Plan & Profile	5+00 17+55.91
Std-107	Emb. Drains, Bit. Curbs & Rundowns	
Std-108	Fill-Gage Tables	
R9-SP-214	Metal End Sections	
Std-109	R.C.P. Bedding & Fill Class Tables	
Std-110	R.C.P. End Sections & Cutoff Walls	
Std-113	Type A & B Concrete Headwalls	
Std-116	Concrete Drop Inlets & Pipe-Elbow Inlets	
Std-119	Underdrains	
Std-121	Rock Structures	
Std-131-C	Maintenance Posts & Delineators	
Std-136	Wire Fences with Steel Posts	
Std-139	Buck & Pole Fence	
Std-143	Project Identification Signs	
Std-145	24' Cattle Guard	
Std-146	12' Assembled Cattle Guard	
Std-151	Beam-Type Guardrail	
Std-152	Beam-Type Guardrail End Anchorage	
R9-SP-185	Intersection Detail	212+82 212+32
R9-SP-208	Intersection Detail	149+56



Plans prepared by: B.P.R.
 Date: February, 1968
 Description of Project
 Improvements: Grading & Bit. Stab.
 Roadbed Widths:
 Graded: 52'
 Base: 36'
 Type Code: 2013
 Traffic Volume
 A.D.T. (1966): 530
 A.D.T. (1986): 1590
 D.H.V.: 240
 D: 65%
 T: 5%
 V: 50 M.p.h.

U.S. DEPARTMENT OF TRANSPORTATION
 FEDERAL HIGHWAY ADMINISTRATION
 BUREAU OF PUBLIC ROADS
 REGION NO. 9 DENVER, COLORADO

APPROVED: _____ DATE _____ 1968



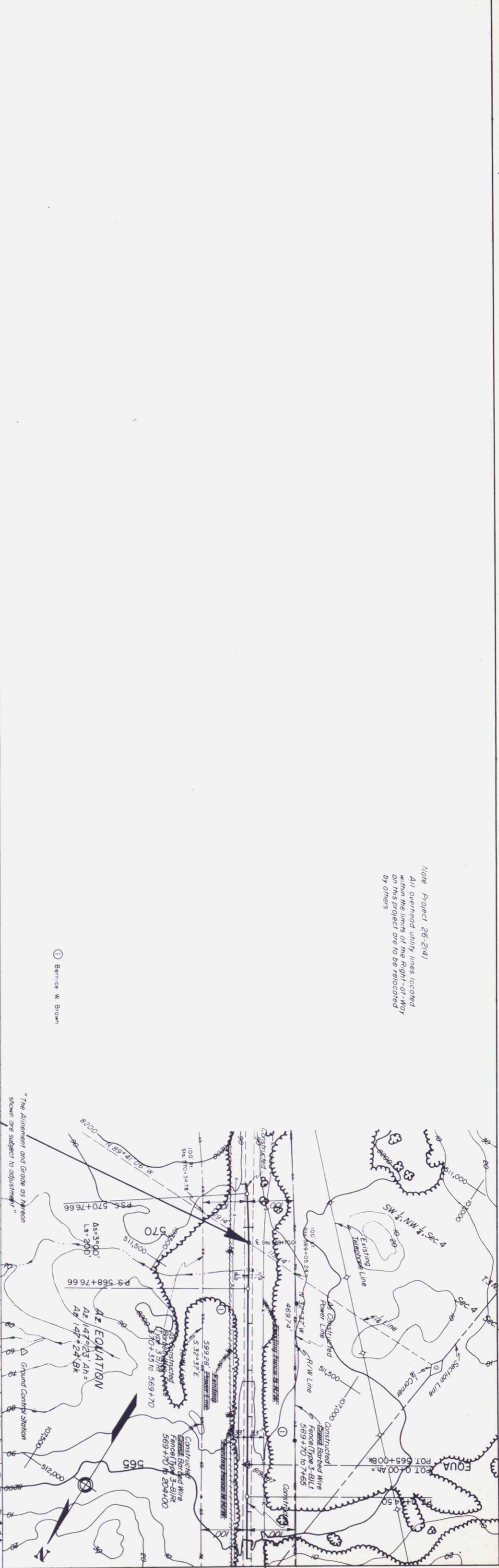
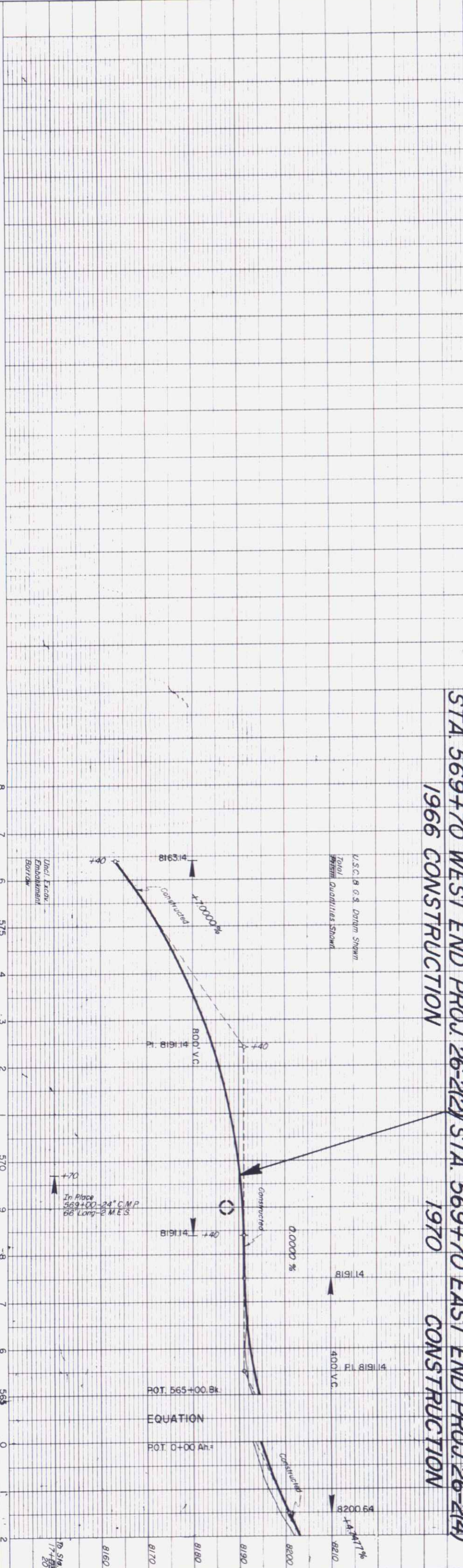
LEGEND

EXISTING ROAD	UNIMPROVED	GRADED	REINFORCED SUBGRADE	BASE COURSE	SURFACE TREATMENT	COLOR PLANT MIX BITUM.	CONCRETE
---------------	------------	--------	---------------------	-------------	-------------------	------------------------	----------

B.P.R. Form 9, J.K.C. 1-62

PROFILE	BY	DATE
SURVEYED		
PLOTTED		
GRADES CHECKED		
NO. B.M.S. NOTED		
STRUCTURE NOTATIONS CHECKED		

PLAN	BY	DATE
SURVEYED		
PLOTTED		
ALIGNMENT CHECKED		
RT. OF WAY CHECKED		



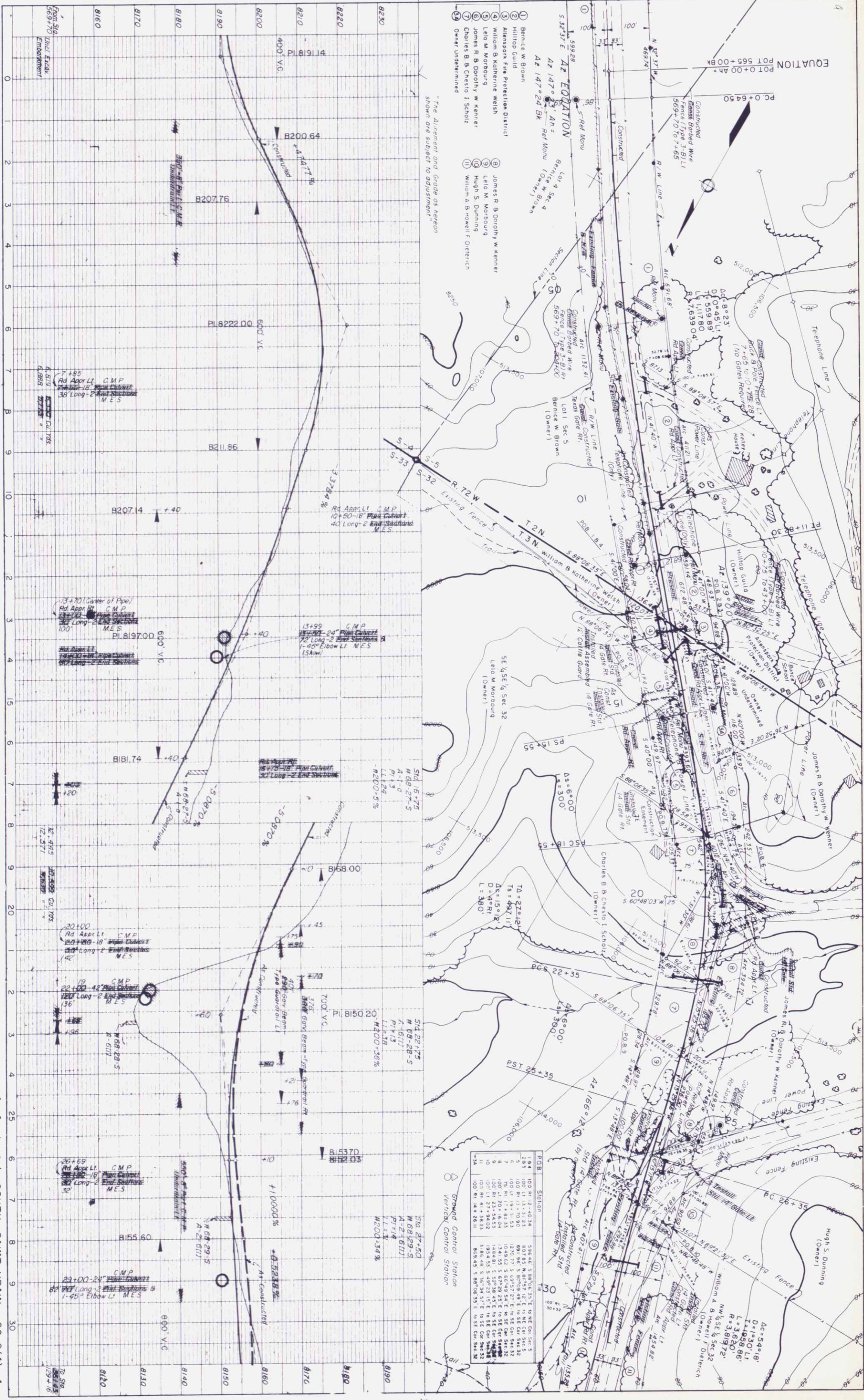
Note Project 26-2(4)
All overhead utility lines located within the limits of the Right-of-Way on this project are to be relocated by others.

① Bernice W. Brown

"The alignment and grade as hereon shown are subject to adjustment."

PROFILE	SURVEYED	BY
	PLOTTED	
	GRADES CHECKED	
	BY & NOTED	
NO.	STRUCTURE NOTATIONS CH'D	

NOTE BOOK	SURVEYED	BY
	PLOTTED	
	ALIGNMENT CHECKED	
	RT. OF WAY CHECKED	
NO.		



The Alignment and Grades as hereon shown are subject to adjustment.

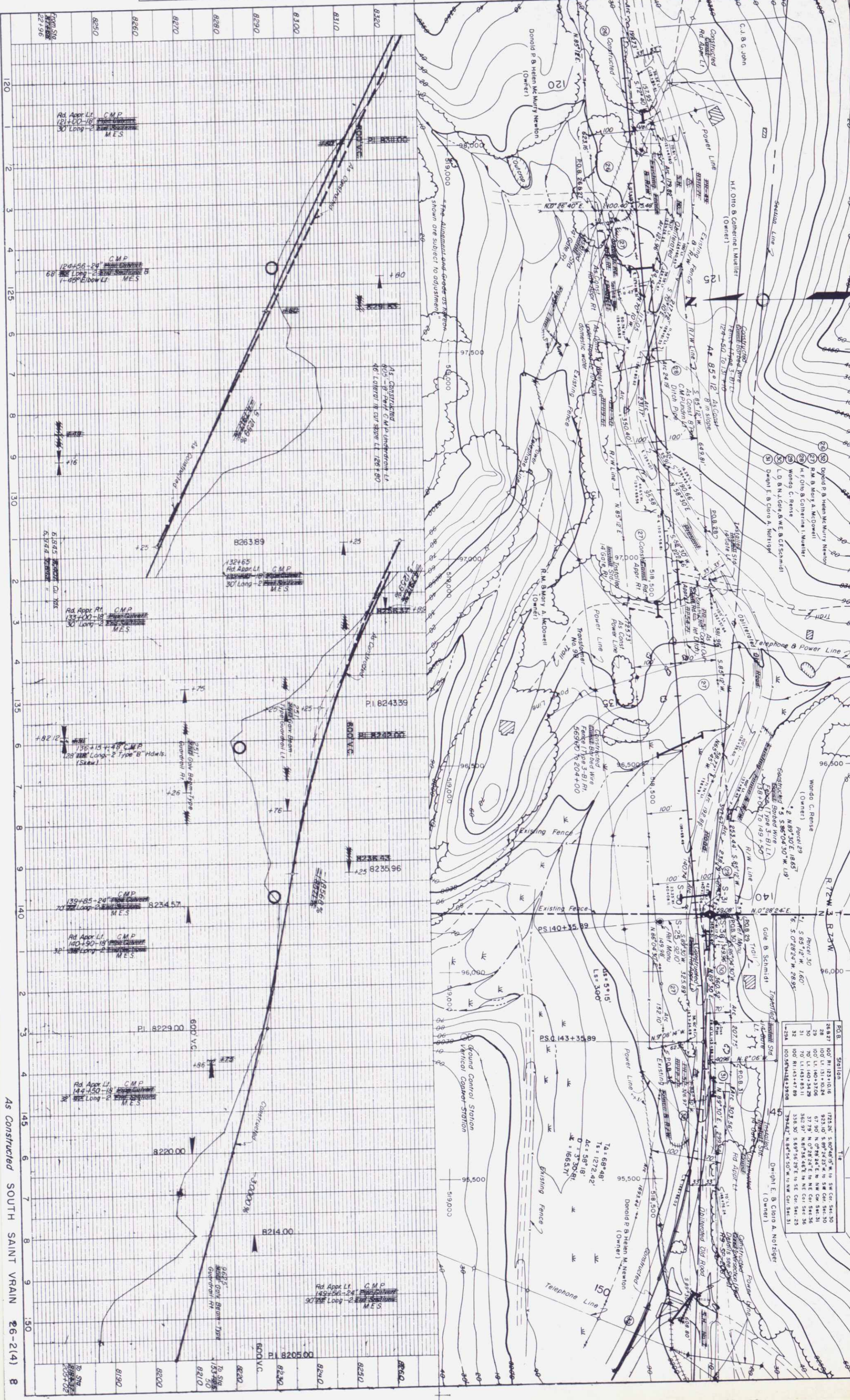
- 1 Benice W Brown
- 2 Hilltop Guild
- 3 Allansport Fire Protection District
- 4 William B Katherine Welsh
- 5 Leila M Morbourg
- 6 James R B Dorothy W Kenner
- 7 Charles B Chesio I Scholtz
- 8 William A B Howell F Dietrich
- 9 Owner Undetermined

Station	Elevation	Notes
184	100.81	12.40.34
284	100.11	13.15.23
3	100.11	13.15.23
4	100.11	13.15.23
5	100.11	13.15.23
6	100.11	13.15.23
7	100.11	13.15.23
8	100.11	13.15.23
9	100.11	13.15.23
10	100.11	13.15.23
11	100.11	13.15.23
12	100.11	13.15.23
13	100.11	13.15.23
14	100.11	13.15.23

AS CONSTRUCTED SOUTH SAINT VRAIN 26-2(4) 4

PROFILE	SURVEYED	BY	DATE
	PLOTTED		
	GRADES CHECKED		
	STRUCTURE NOTATIONS CHECKED		

PLAN	SURVEYED	BY	DATE
	PLOTTED		
	ALIGNMENT CHECKED		
	RT. OF WAY CHECKED		



From Sta 22+96

8250

8260

8270

8280

8290

8300

8310

8320

8330

8340

8350

8360

8370

8380

8390

8400

8410

8420

8430

8440

8450

8460

8470

8480

8490

8500

8510

8520

8530

8540

8550

8560

8570

8580

8590

8600

8610

8620

8630

8640

8650

8660

8670

8680

8690

8700

8710

8720

8730

8740

8750

8760

8770

8780

8790

8800

8810

8820

8830

8840

8850

8860

8870

8880

8890

8900

8910

8920

8930

8940

8950

8960

8970

8980

8990

9000

9010

9020

9030

9040

9050

9060

9070

9080

9090

9100

9110

9120

9130

9140

9150

9160

9170

9180

9190

9200

9210

9220

9230

9240

9250

9260

9270

9280

9290

9300

9310

9320

9330

9340

9350

9360

9370

9380

9390

9400

9410

9420

9430

9440

9450

9460

9470

9480

9490

9500

9510

9520

9530

9540

9550

9560

9570

9580

9590

9600

9610

9620

9630

9640

9650

9660

9670

9680

9690

9700

9710

9720

9730

9740

9750

9760

9770

9780

9790

9800

9810

9820

9830

9840

9850

9860

9870

9880

9890

9900

9910

9920

9930

9940

9950

9960

9970

9980

9990

10000

10010

10020

10030

10040

10050

10060

10070

10080

10090

10100

10110

10120

10130

10140

10150

10160

10170

10180

10190

10200

10210

10220

10230

10240

10250

10260

10270

10280

10290

10300

10310

10320

10330

10340

10350

10360

10370

10380

10390

10400

10410

10420

10430

10440

10450

10460

10470

10480

10490

10500

10510

10520

10530

10540

10550

10560

10570

10580

10590

10600

10610

10620

10630

10640

10650

10660

10670

10680

10690

10700

10710

10720

10730

10740

10750

10760

10770

10780

10790

10800

10810

10820

10830

10840

10850

10860

10870

10880

10890

10900

10910

10920

10930

10940

10950

10960

10970

10980

10990

11000

11010

11020

11030

11040

11050

11060

11070

11080

11090

11100

11110

11120

11130

11140

11150

11160

11170

11180

11190

11200

11210

11220

11230

11240

11250

11260

11270

11280

11290

11300

11310

11320

11330

11340

11350

11360

11370

11380

11390

11400

11410

11420

11430

11440

11450

11460

11470

11480

11490

11500

11510

11520

11530

11540

11550

11560

11570

11580

11590

11600

11610

11620

11630

11640

11650

11660

11670

11680

11690

11700

11710

11720

11730

11740

11750

11760

11770

11780

11790

11800

11810

11820

11830

11840

11850

11860

11870

11880

11890

11900

11910

11920

11930

11940

11950

11960

11970

11980

11990

12000

POB	Station	Tie
28	100' R.I. 123+10.16	1723.25' S. 80°46'45" W. 16' SW Cor. Sta. 30
29	100' L.I. 131+10.24	923.10' S. 68°44'23" E. 16' NW Cor. Sta. 30
30	100' L.I. 140+37.04	37.29' N. 07°28'24" E. 16' NE Cor. Sta. 31
31	100' L.I. 140+34.29	382.97' N. 87°35'46" E. 16' NE Cor. Sta. 35
32	100' R.I. 143+47.89	338.30' S. 89°46'29" E. 16' SE Cor. Sta. 25
33	100' R.I. 143+47.89	338.30' S. 89°46'29" E. 16' SE Cor. Sta. 25
34	100' S. 07°28'24" W. 28.95'	338.30' S. 89°46'29" E. 16' SE Cor. Sta. 25
35	100' S. 07°28'24" W. 28.95'	338.30' S. 89°46'29" E. 16' SE Cor. Sta. 25
36	100' S. 07°28'24" W. 28.95'	338.30' S. 89°46'29" E. 16' SE Cor. Sta. 25
37	100' S. 07°28'24" W. 28.95'	338.30' S. 89°46'29" E. 16' SE Cor. Sta. 25
38	100' S. 07°28'24" W. 28.95'	338.30' S. 89°46'29" E. 16' SE Cor. Sta. 25
39	100' S. 07°28'24" W. 28.95'	338.30' S. 89°46'29" E. 16' SE Cor. Sta. 25
40	100' S. 07°28'24" W. 28.95'	338.30' S. 89°46'29" E. 16' SE Cor. Sta. 25
41	100' S. 07°28'24" W. 28.95'	338.30' S. 89°46'29" E. 16' SE Cor. Sta. 25
42	100' S. 07°28'24" W. 28.95'	338.30' S. 89°46'29" E. 16' SE Cor. Sta. 25
43	100' S. 07°28'24" W. 28.95'	338.30' S. 89°46'29" E. 16' SE Cor. Sta. 25
44	100' S. 07°28'24" W. 28.95'	338.30' S. 89°46'29" E. 16' SE Cor. Sta. 25
45	100' S. 07°28'24" W. 28.95'	338.30' S. 89°46'29" E. 16' SE Cor. Sta. 25
46	100' S. 07°28'24" W. 28.95'	338.30' S. 89°46'29" E. 16' SE Cor. Sta. 25
47	100' S. 07°28'24" W. 28.95'	338.30' S. 89°46'29" E. 16' SE Cor. Sta. 25
48	100' S. 07°28'24" W. 28.95'	338.30' S. 89°46'29" E. 16' SE Cor. Sta. 25
49	100' S. 07°28'24" W. 28.95'	338.30' S. 89°46'29" E. 16' SE Cor. Sta. 25
50	100' S. 07°28'24" W. 28.95'	338.30' S. 89°46'29" E. 16' SE Cor. Sta. 25
51	100' S. 07°28'24" W. 28.95'	338.30' S. 89°46'29" E. 16' SE Cor. Sta. 25
52	100' S. 07°28'24" W. 28.95'	338.30' S. 89°46'29" E. 16' SE Cor. Sta. 25
53	100' S. 07°28'24" W. 28.95'	338.30' S. 89°46'29" E. 16' SE Cor. Sta. 25
54	100' S. 07°28'24" W. 28.95'	338.30' S. 89°46'29" E. 16' SE Cor. Sta. 25
55	100' S. 07°28'24" W. 28.95'	338.30' S. 89°46'29" E. 16' SE Cor. Sta. 25
56	100' S. 07°28'24" W. 28.95'	338.30' S. 89°46'29" E. 16' SE Cor. Sta. 25
57	100' S. 07°28'24" W. 28.95'	338.30' S. 89°46'29" E. 16' SE Cor. Sta. 25
58	100' S. 07°28'24" W. 28.95'	338.30' S. 89°46'29" E. 16' SE Cor. Sta. 25
59	100' S. 07°28'24" W. 28.95'	338.30' S. 89°46'29" E. 16' SE Cor. Sta. 25
60	100' S. 07°28'24" W. 28.95'	338.30' S. 89°46'29" E. 16' SE Cor. Sta. 25
61	100' S. 07°28'24" W. 28.95'	338.30' S. 89°46'29" E. 16' SE Cor. Sta. 25
62	100' S. 07°28'24" W. 28.95'	338.30' S. 89°46'29" E. 16' SE Cor. Sta. 25
63	100' S. 07°28'24" W. 28.95'	338.30' S. 89°46'29" E. 16' SE Cor. Sta. 25
64	100' S. 07°28'24" W. 28.95'	338.30' S. 89°46'29" E. 16' SE Cor. Sta. 25
65	100' S. 07°28'24" W. 28.95'	338.30' S. 89°46'29" E. 16' SE Cor. Sta. 25
66	100' S. 07°28'24" W. 28.95'	338.30' S. 89°46'29" E. 16' SE Cor. Sta. 25
67	100' S. 07°28'24" W. 28.95'	338.30' S. 89°46'29" E. 16' SE Cor. Sta. 25
68	100' S. 07°28'24" W. 28.95'	338.30' S. 89°46'29" E. 16' SE Cor. Sta. 25
69	100' S. 07°28'24" W. 28.95'	338.30' S. 89°46'29" E. 16' SE Cor. Sta. 25
70	100' S. 07°28'24" W. 28.95'	338.30' S. 89°46'29" E. 16' SE Cor. Sta. 25
71	100' S. 07°28'24" W. 28.95'	338.30' S. 89°46'29" E. 16' SE Cor. Sta. 25
72	100' S. 07°28'24" W. 28.95'	338.30' S. 89°46'29" E. 16' SE Cor. Sta. 25
73	100' S. 07°28'24" W. 28.95'	338.30' S. 89°46'29" E. 16' SE Cor. Sta. 25
74	100' S. 07°28'24" W. 28.95'	338.30' S. 89°46'29" E. 16' SE Cor. Sta. 25
75	100' S. 07°28'24" W. 28.95'	338.30' S. 89°46'29" E. 16' SE Cor. Sta. 25
76	100' S. 07°28'24" W. 28.95'	338.30' S. 89°46'29" E. 16' SE Cor. Sta. 25
77	100' S. 07°28'24" W. 28.95'	338.30' S. 89°46'29" E. 16' SE Cor. Sta. 25
78	100' S. 07°28'24" W. 28.95'	338.30' S. 89°46'29" E. 16' SE Cor. Sta. 25
79	100' S. 07°28'24" W. 28.95'	338.30' S. 89°46'29" E. 16' SE Cor. Sta. 25
80	100' S. 07°28'24" W. 28.95'	338.30' S. 89°46'29" E. 16' SE Cor. Sta. 25
81	100' S. 07°28'24" W. 28.95'	338.30' S. 89°46'29" E. 16' SE Cor. Sta. 25
82	100' S. 07°28'24" W. 28.95'	338.30' S. 89°46'29" E. 16' SE Cor. Sta. 25
83	100' S. 07°28'24" W. 28.95'	338.30' S. 89°46'29" E. 16' SE Cor. Sta. 25
84	100' S. 07°28'24" W. 28.95'	338.30' S. 89°46'29" E. 16' SE Cor. Sta. 25
85	100' S. 07°28'24" W. 28.95'	338.30' S. 89°46'29" E. 16' SE Cor. Sta. 25
86	100' S. 07°28'24" W. 28.95'	338.30' S. 89°46'29" E. 16' SE Cor. Sta. 25
87	100' S. 07°28'24" W. 28.95'	338.30' S. 89°46'29" E. 16' SE Cor. Sta. 25
88	100' S. 07°28'24" W. 28.95'	338.30' S. 89°46'29" E. 16' SE Cor. Sta. 25
89	100' S. 07°28'24" W. 28.95'	338.30' S. 89°46'29" E. 16' SE Cor. Sta. 25
90	100' S. 07°28'24" W. 28.95'	338.30' S. 89°46'29" E. 16' SE Cor. Sta. 25
91	100' S. 07°28'24" W. 28.95'	338.30' S. 89°46'29" E. 16' SE Cor. Sta. 25
92	100' S. 07°28'24" W. 28.95'	338.30' S. 89°46'29" E. 16' SE Cor. Sta. 25
93	100' S. 07°28'24" W. 28.95'	338.30' S. 89°46'29" E. 16' SE Cor. Sta. 25
94	100' S. 07°28'24" W. 28.95'	338.30' S. 89°46'29" E. 16' SE Cor. Sta. 25
95	100' S. 07°28'24" W. 28.95'	338.30' S. 89°46'29" E. 16' SE Cor. Sta. 25
96	100' S. 07°28'24" W. 28.95'	338.30' S. 89°46'29" E. 16' SE Cor. Sta. 25
97	100' S. 07°28'24" W. 28.95'	338.30' S. 89°46'29" E. 16' SE Cor. Sta. 25
98	100' S. 07°28'24" W. 28.95'	338.30' S. 89°46'29" E. 16' SE Cor. Sta. 25
99	100' S. 07°28'24" W. 28.95'	338.30' S. 89°46'29" E. 16' SE Cor. Sta. 25
100	100' S. 07°28'24" W. 28.95'	338.30' S. 89°46'29" E. 16' SE Cor. Sta. 25

As Constructed SOUTH SAINT VRAIN 26-2(4) 8

PROFILE	BY	DATE
SURVEYED		
PLOTTED		
GRADES CHECKED		
NOTE BOOK		
NO.		
STRUCTURE NOTATIONS CHECKED		

PLAN	BY	DATE
SURVEYED		
PLOTTED		
ALIGNMENT CHECKED		
NOTE BOOK		
NO.		
RT. OF WAY CHECKED		



POB	Station	Tie
39	70' R.I. 205+15.14*	119.70' S. 88° 48' 00" E. to E/4 Cor. Sec. 26
41	42' E. 44' L.I. 212+41.44	857.50' S. 88° 18' 00" E. to E/4 Cor. Sec. 26
42	70' L.I. 213+08.16*	932.75' S. 88° 59' 19" E. to E/4 Cor. Sec. 26

* Revised Stations

The Alignment and Grade as here shown are subject to adjustment.

Ground Control Station
Vertical Control Station

As Constructed SOUTH SAINT VRAIN 26-2(4) 11